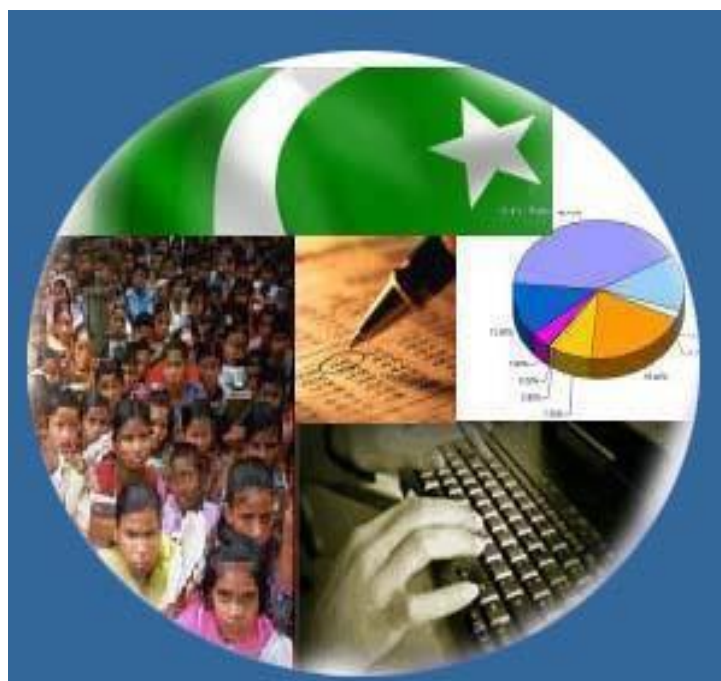




Monthly Review on Price Indices



May 2026
(Base Year 2015-16)

Government of Pakistan
Ministry of Planning, Development & Special Initiatives
Pakistan Bureau of Statistics
Islamabad

PRICE STATISTICS TEAM

S#	Name	Designation
1.	Dr. Naeem Uz Zafar (S.I)	Chief Statistician
2.	Syed Abdul Qader Shah	Director General
3.	Mr. Naseer Ahmad	Director
4.	Dr. Ahtasham Gul	Chief Statistical Officer
5.	Mr. Kashif Ali	Statistical Officer
6.	Miss. Umaira Zareen	Statistical Officer
7.	Mr. Abdul Qadir	Statistical Officer
8.	Mrs. Safia Akram	Statistical Officer
9.	Mrs. Faiza Razzaq	Statistical Officer
10.	Mr. Umer Farooq	Statistical Officer
11.	Mr. Ansar Mahmood	Statistical Assistant
12.	Mrs. Madiha Gulfraz	Statistical Assistant
13.	Mrs. Humail Fatima	Statistical Assistant

IT & SOFTWARE TEAM

1.	Mr. Muhammad Ehtesham	Director (DP)
2.	Mr. Arsalan Bashir	Chief System Analyst
3.	Mr. Muhammad Kibria	Data Processing Officer
4.	Mr. Irfan Bajwa	Data Processing Officer

Inflation in Brief

- CPI inflation General**, increased by 11.7% on year-on-year basis in May 2026 as compared to an increase of 10.9% in the previous month and 3.5% in May 2025. On month-on-month basis, it increased by 0.5% in May 2026 as compared to an increase of 2.5% in the previous month and a decrease of 0.2% in May 2025.
- CPI inflation Urban**, increased by 11.8% on year-on-year basis in May 2026 as compared to an increase of 11.1% in the previous month and an increase of 3.5% in May 2025. On month-on-month basis, it increased by 0.7% in May 2026 as compared to an increase of 2.7% in the previous month and an increase of 0.1% in May 2025.
- CPI inflation Rural**, increased by 11.5% on year-on-year basis in May 2026 as compared to an increase of 10.6% in the previous month and an increase of 3.4% observed in May 2025. On month-on-month basis, it increased by 0.3% in May 2026 as compared to an increase of 2.1% in the previous month and a decrease of 0.5% in May 2025.
- SPI inflation** on YoY basis increased by 12.0% in May 2026 as compared to an increase of 10.1% in the previous month and a decrease of 0.6% in May 2025. On MoM basis, it increased by 0.7% in May 2026 as compared to an increase of 2.0% in the previous month and a decrease of 1.0% in May 2025.
- WPI inflation** on YoY basis increased by 12.7% in May 2026 as compared to an increase of 13.6% in the previous month and an increase of 0.4% in May 2025. On month-on-month basis, it decreased by 0.8% in May 2026 as compared to an increase of 5.1% in the previous month and no change observed in May 2025.
- Figures 1 and 2 show graphically the yearly data of Table 1.a for Urban and Rural CPI while Table 1.1 shows "Period Average" and "YoY" percentage changes in indices.

Table 1.a General Inflation (%) (Base 2015-16)																		
PERIOD	CPI														SPI*		WPI	
	General						Food				Non-Food							
	National		Urban		Rural		Urban		Rural		Urban		Rural		YoY	MoM	YoY	MoM
	YoY	MoM	YoY	MoM	YoY	MoM	YoY	MoM	YoY	MoM	YoY	MoM	YoY	MoM				
Aug-24	9.6	0.4	11.7	0.3	6.7	0.6	4.1	1.3	1.9	1.3	17.4	-0.4	11.9	-0.2	10.8	-0.3	6.3	0.3
Sep-24	6.9	-0.5	9.3	-0.5	3.6	-0.5	1.7	-0.8	-0.9	-1.0	15.0	-0.3	8.4	-0.1	9.2	0.2	1.9	-1.1
Oct-24	7.2	1.2	9.3	1.1	4.2	1.5	2.7	1.6	0.6	2.2	14.2	0.7	8.0	0.8	9.7	0.6	3.9	0.0
Nov-24	4.9	0.5	5.2	0.5	4.3	0.5	1.7	-0.2	-0.2	0.2	7.8	1.0	9.1	0.8	7.3	1.0	2.3	-0.1
Dec-24	4.1	0.1	4.4	-0.1	3.6	0.3	2.5	0.1	-0.2	0.1	5.7	-0.2	7.6	0.5	4.2	0.8	1.9	-0.4
Jan-25	2.4	0.2	2.7	0.2	1.9	0.2	-0.6	-0.3	-2.9	-0.4	5.0	0.5	7.0	0.9	0.7	-1.4	0.6	0.2
Feb-25	1.5	-0.8	1.8	-0.7	1.1	-1.1	-0.9	-1.8	-4.3	-2.5	3.6	0.1	6.6	0.3	-0.2	-1.6	-0.7	-0.2
Mar-25	0.7	0.9	1.2	0.8	0.0	1.1	-1.7	1.6	-5.4	1.6	3.1	0.2	5.6	0.5	-2.3	-0.1	-1.6	0.3
Apr-25	0.3	-0.8	0.5	-0.7	-0.1	-1.0	-1.9	-1.6	-4.6	-1.8	2.2	-0.1	4.4	-0.4	-3.6	-2.1	-2.2	-1.3
May-25	3.5	-0.2	3.5	0.1	3.4	-0.5	5.3	0.6	2.1	-1.0	2.4	-0.3	4.6	-0.1	-0.6	-1.0	0.4	0.0
June-25	3.2	0.2	3.0	0.1	3.6	0.5	4.2	-0.6	2.4	0.1	2.2	0.5	4.7	0.8	-1.9	0.0	0.6	0.6
July-25	4.1	2.9	4.4	3.4	3.5	2.2	2.2	2.4	1.5	2.7	5.9	4.1	5.4	1.6	-0.9	3.1	-0.5	1.2
Aug-25	3.1	-0.6	3.5	-0.7	2.5	-0.5	-0.5	-1.3	-0.5	-0.7	6.1	-0.3	5.3	-0.3	2.6	3.2	-1.0	-0.2
Sep-25	5.8	2.1	5.7	1.6	5.9	2.8	4.4	4.0	6.0	5.5	6.5	0.1	5.8	0.4	4.5	2.0	0.6	0.5
Oct-25	6.2	1.7	6.0	1.4	6.6	2.1	4.5	1.7	6.8	3.0	7.0	1.1	6.4	1.3	4.8	0.9	1.1	0.5
Nov-25	6.1	0.4	6.1	0.5	6.3	0.2	5.0	0.3	5.9	-0.7	6.7	0.7	6.7	1.0	4.2	0.4	1.1	-0.2
Dec-25	5.6	-0.4	5.8	-0.4	5.4	-0.6	3.2	-1.7	3.8	-1.9	7.5	0.5	6.9	0.7	2.5	-0.8	0.6	-0.9
Jan-26	5.8	0.4	5.8	0.2	5.8	0.6	3.3	-0.2	4.7	0.4	7.4	0.5	6.9	0.8	3.3	-0.8	0.2	-0.2
Feb-26	7.0	0.3	6.8	0.3	7.3	0.3	4.4	-0.8	6.8	-0.5	8.3	0.9	7.7	1.0	4.8	-0.1	1.0	0.7
Mar-26	7.3	1.2	7.4	1.3	7.2	1.0	2.9	0.1	4.5	-0.6	10.3	2.1	9.7	2.4	5.6	0.7	6.7	5.9
Apr-26	10.9	2.5	11.1	2.7	10.6	2.1	6.9	2.3	7.3	0.9	13.8	3.0	13.6	3.2	10.1	2.0	13.6	5.1
May-26	11.7	0.5	11.8	0.7	11.5	0.3	6.5	0.2	8.5	0.2	15.2	1.0	14.2	0.4	12.0	0.7	12.7	-0.8

* SPI for quintile 1. Digits 0.0* are due to rounding off.

Core inflation (NFNE)

7. Measured by **non-food non-energy Urban** increased by 9.0% on (YoY) basis in May 2026 as compared to an increase of 8.0% in the previous month and an increase of 7.3% in May 2025. On (MoM) basis, it increased by 1.3% in May 2026 as compared to 1.9% in previous month and an increase of 0.4% in the corresponding month of last year i.e. May 2025.
8. Measured by **non-food non-energy Rural** increased by 8.4% on (YoY) basis in May 2026 as compared to an increase of 8.5% in the previous month and an increase of 8.8% in May 2025. On (MoM) basis, it increased by 0.2% in May 2026 as compared to an increase of 1.1% in the previous month and an increase of 0.4% in the corresponding month of last year i.e. May 2025.

Core inflation (Trimmed)

9. Measured by 20% **weighted trimmed mean Urban** increased by 9.8% on (YoY) basis in May 2026 as compared to an increase of 9.2% in the previous month and 4.9% in May 2025. On (MoM) basis, it increased by 0.6% in May 2026 as compared to an increase of 1.1% a month earlier and an increase of 0.1% in the corresponding month of last year i.e. May 2025.
10. Measured by 20% **weighted trimmed mean Rural** increased by 9.6% on (YoY) basis in May 2026 as compared to an increase of 8.9% in the previous month and 4.7% in May 2025. On (MoM) basis, it increased by 0.8% in May 2026 as compared to an increase of 1.0% in the previous month and a decrease of 0.2% in the corresponding month of last year i.e. May 2025.

Table 1.b Core Inflation (%) (Base 2015-16)

Period	NFNE				Trimmed			
	Urban		Rural		Urban		Rural	
	YoY	MoM	YoY	MoM	YoY	MoM	YoY	MoM
May-25	7.3	0.4	8.8	0.4	4.9	0.1	4.7	-0.2
June-25	6.9	0.2	8.6	0.7	4.7	0.3	5.2	0.5
July-25	7.0	0.8	8.1	0.7	5.1	1.0	4.9	0.7
Aug-25	6.9	0.3	7.8	0.2	4.2	0.0	3.5	0.3
Sep-25	7.0	0.3	7.8	0.6	5.7	0.3	6.5	0.7
Oct-25	7.5	1.1	8.4	1.3	6.0	0.9	6.8	1.2
Nov-25	6.6	0.3	8.2	0.5	5.3	0.3	6.4	0.4
Dec-25	6.9	0.5	8.1	0.6	5.5	0.3	6.0	0.4
Jan-26	7.2	1.0	8.3	1.1	4.9	0.5	5.4	0.7
Feb-26	7.1	0.2	8.3	0.4	5.1	0.2	5.6	0.3
Mar-26	7.4	0.7	8.4	0.8	5.9	0.6	6.3	0.5
Apr-26	8.0	1.9	8.5	1.1	9.2	1.1	8.9	1.0
May-26	9.0	1.3	8.4	0.2	9.8	0.6	9.6	0.8

Table 1.1 Period Average and Y-o-Y % Change

INDEX	Average July - May % Changes			May over May % Changes		
	2025-2026	2024-2025	2023-2024	2025-2026	2024-2025	2023-2024
CPI (National)	6.69	4.61	24.52	11.66	3.46	11.76
CPI (Urban)	6.76	5.53	25.06	11.79	3.51	14.35
CPI (Rural)	6.59	3.29	23.76	11.48	3.39	8.17
SPI	4.81	4.35	28.65	11.99	-0.59	15.32
WPI	3.25	2.02	21.12	12.71	0.36	9.93

Figure 1: Urban Inflation - YoY, Special Indices

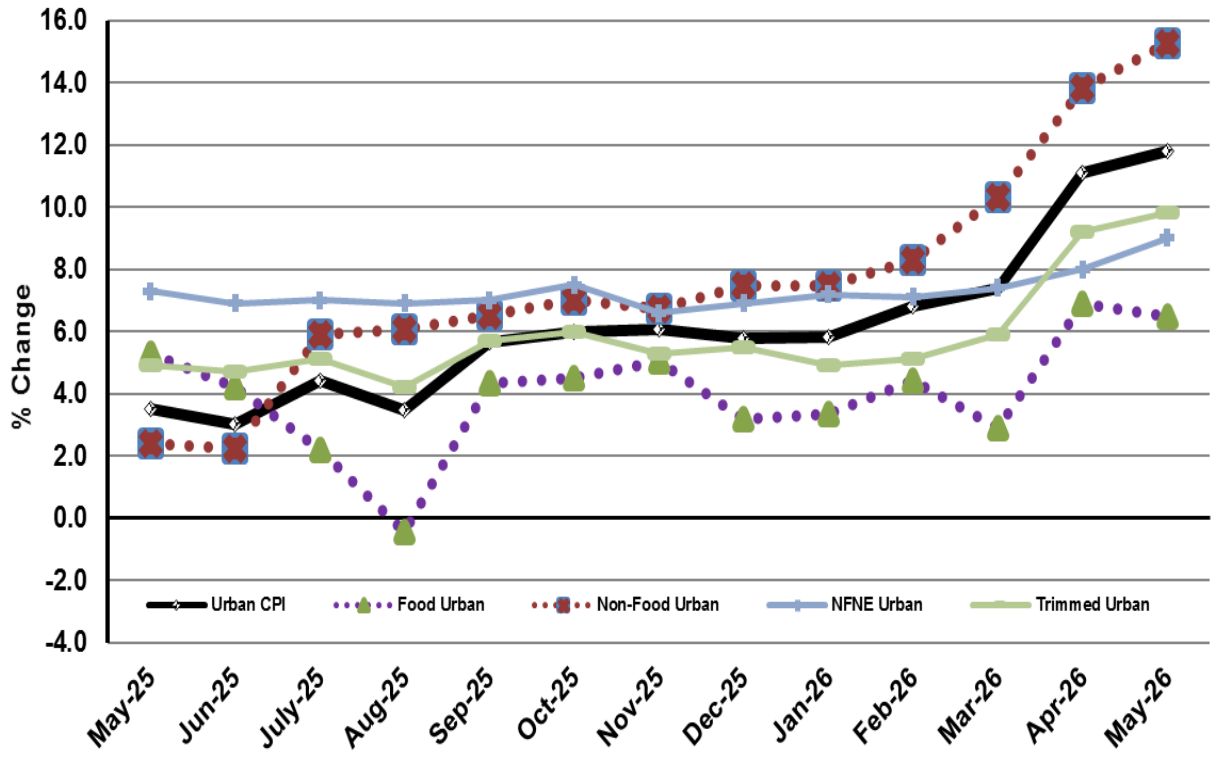
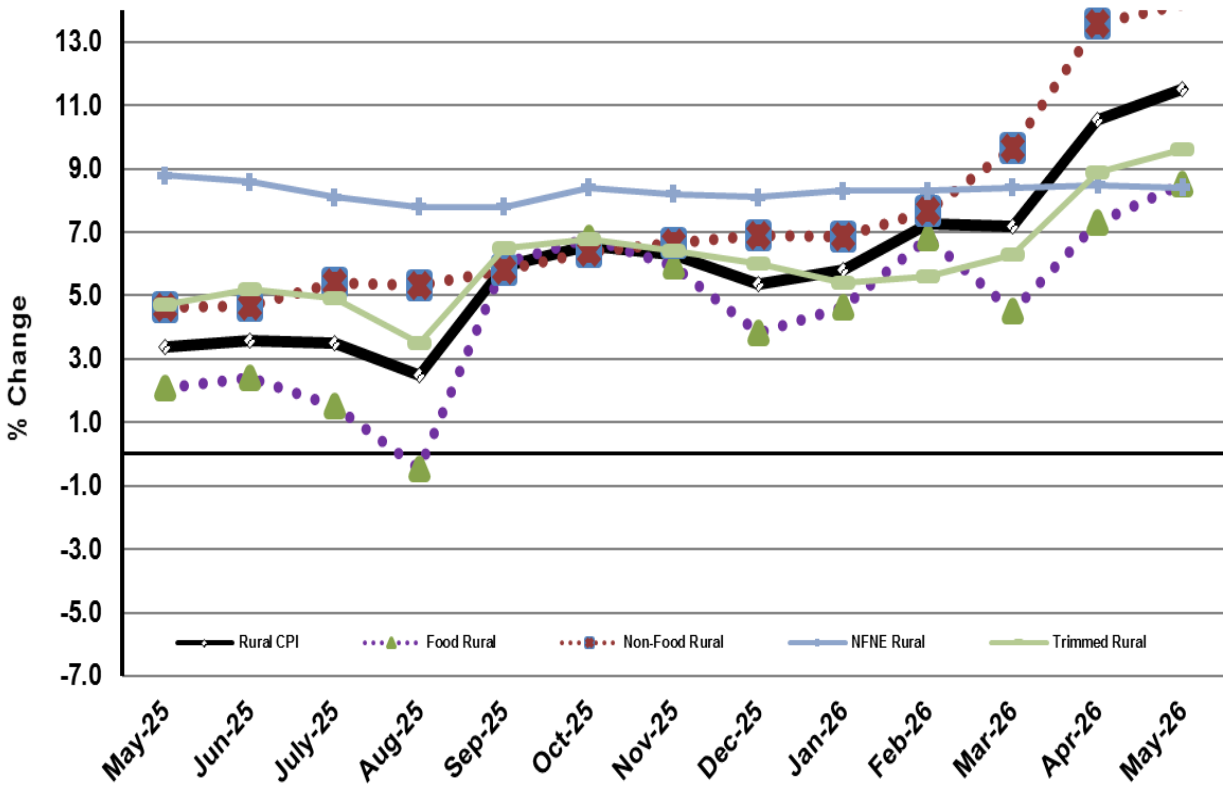
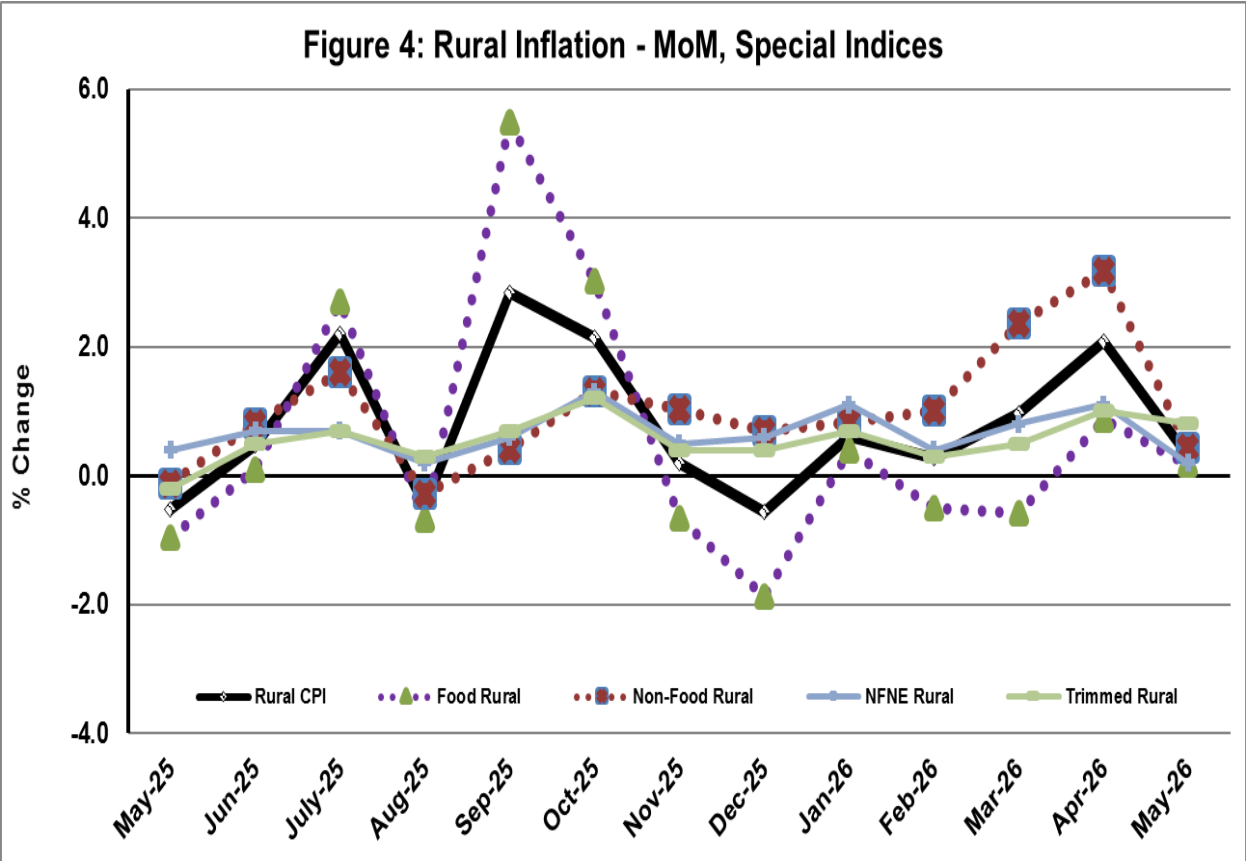
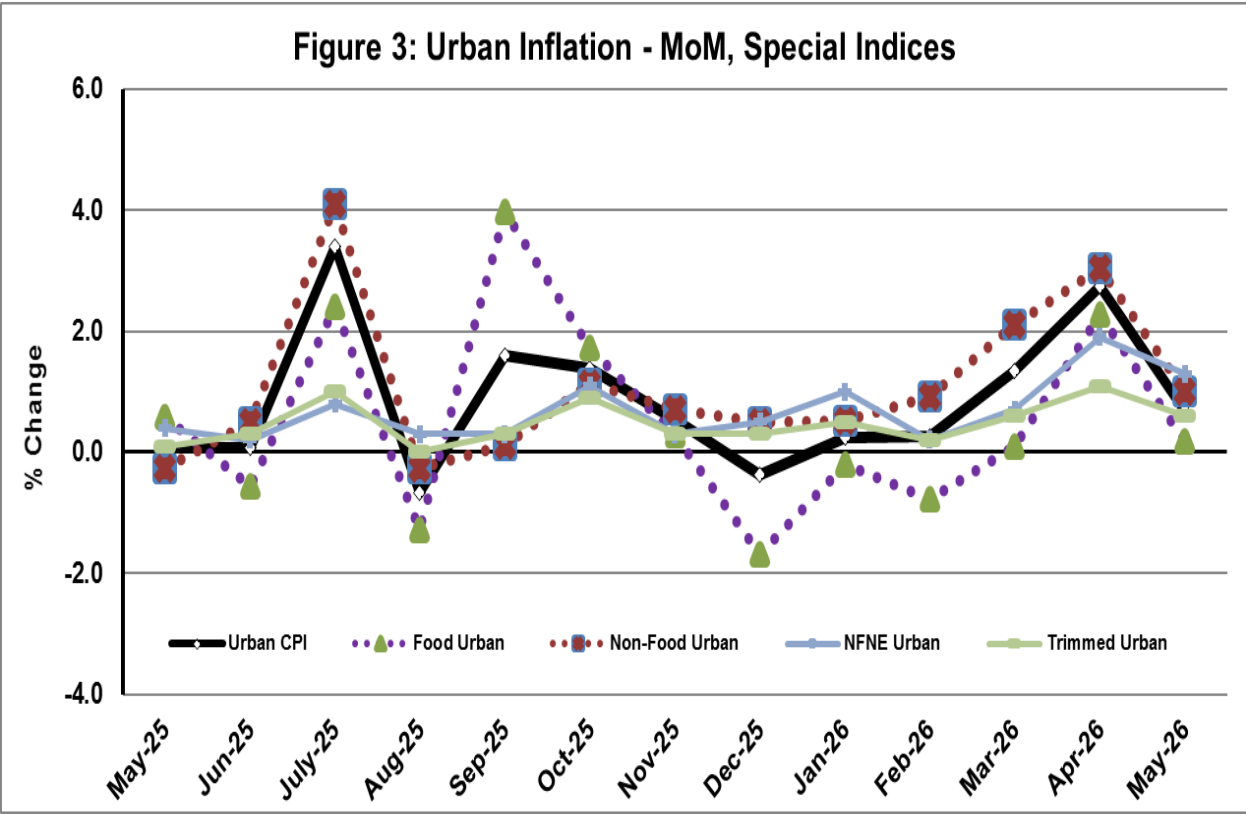
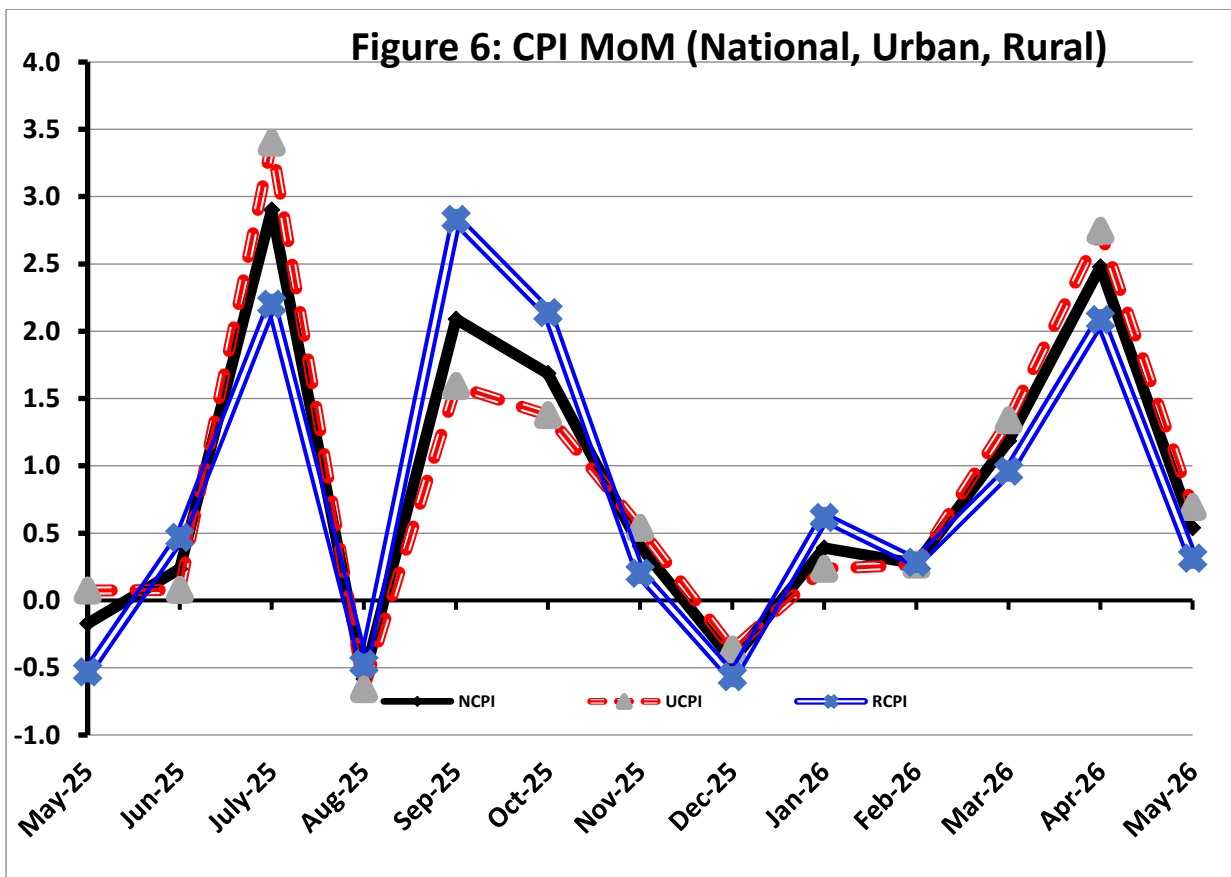
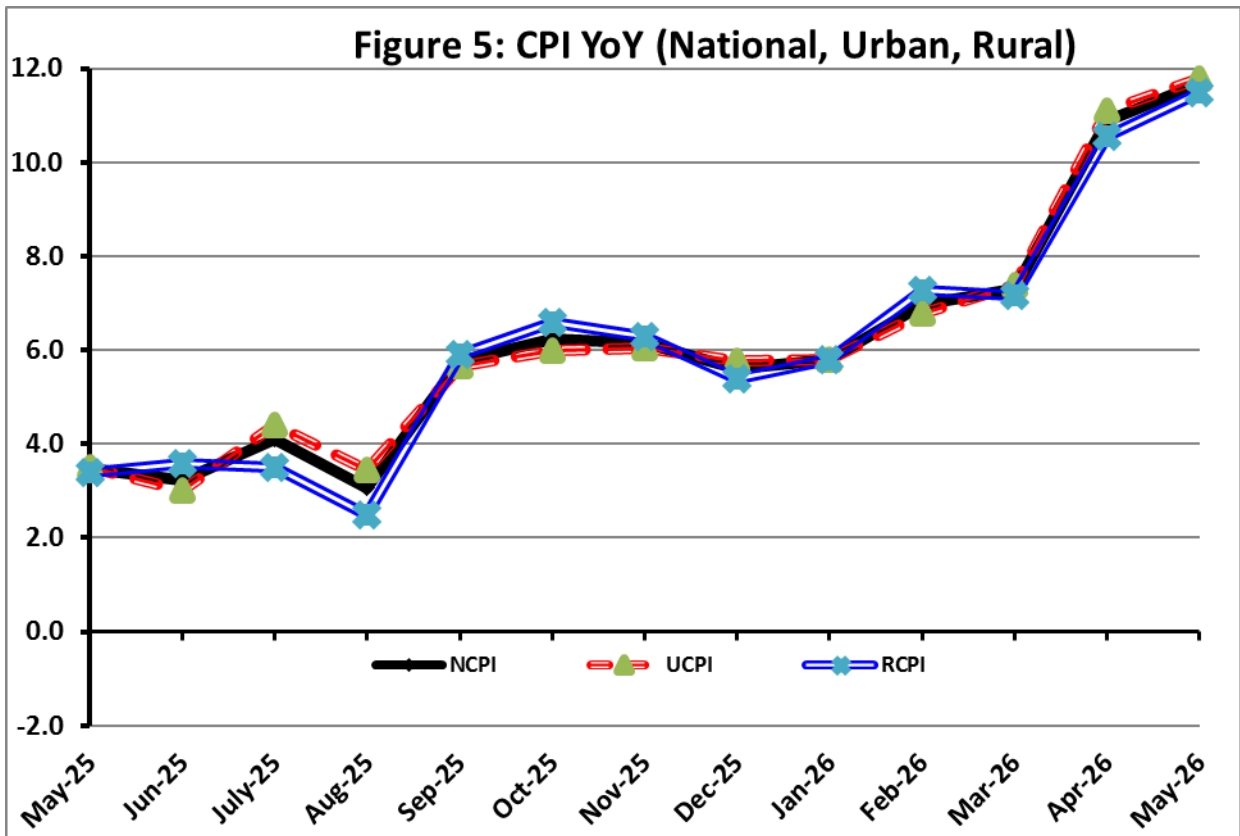


Figure 2: Rural Inflation - YoY, Special Indices







I. National Consumer Price Index (NCPI)

The **National Consumer Price Index** for **May 2026** is increased by **0.52%** over **April 2026** and increased by **11.66%** over corresponding month of the last year i.e. **May 2025**.

Table 1: Consumer Price Index (National) by Group of Commodities and Services (Base 2015-16)

No	Group	Group Weight (%)	Indices			% Change May 2026 Over		Impact (In % points) May 2026 Over	
			May 26	Apr 26	May 25	Apr 26	May 25	Apr 26	May 25
	General	100.00	294.34	292.81	263.60	0.52	11.66	0.52	11.66
1.	Food & Non-alcoholic Bev.	34.58	293.71	293.41	272.12	0.10	7.93	0.04	2.83
	<i>Non-perishable Food Items</i>	29.60	306.16	300.30	279.79	1.95	9.42	0.59	2.96
	<i>Perishable Food Items</i>	4.99	219.77	252.47	226.59	-12.95	-3.01	-0.56	-0.13
2.	Alcoholic Bev. & Tobacco	1.02	404.40	403.13	395.48	0.32	2.26	0.00	0.03
3.	Clothing & Footwear	8.60	285.62	276.19	262.59	3.41	8.77	0.28	0.75
4.	Housing, Water, Electricity, Gas & Fuels	23.63	269.35	272.87	230.66	-1.29	16.78	-0.28	3.47
5.	Furnishing & Household Equipment Maintenance	4.10	292.07	287.69	277.85	1.52	5.12	0.06	0.22
6.	Health	2.79	292.41	290.04	271.91	0.82	7.54	0.02	0.22
7.	Transport	5.91	420.19	399.70	307.20	5.13	36.78	0.41	2.53
8.	Communication	2.21	136.30	136.11	135.02	0.14	0.95	0.00	0.01
9.	Recreation & Culture	1.59	265.12	264.79	265.72	0.13	-0.23	0.00	0.00
10.	Education	3.79	237.43	235.62	219.10	0.77	8.37	0.02	0.26
11.	Restaurants & Hotels	6.92	303.29	301.53	286.96	0.58	5.69	0.04	0.43
12.	Miscellaneous	4.87	375.50	379.94	326.44	-1.17	15.03	-0.07	0.91

II. Urban Consumer Price Index (UCPI)

The Urban Consumer Price Index for **May 2026** is increased by **0.68%** over **April 2026** and increased by **11.79%** over corresponding month of the last year i.e. **May 2025**.

Table 2: Consumer Price Index (Urban) by Group of Commodities and Services (Base 2015-16)

No	Group	Group Weight (%)	Indices			% Change May 2026 Over		Impact (In % points) May 2026 Over	
			May26	Apr 26	May 25	Apr 26	May 25	Apr 26	May 25
	General	100.00	291.58	289.61	260.84	0.68	11.79	0.68	11.79
1.	Food & Non-alcoholic Bev.	30.42	291.88	291.71	273.34	0.06	6.78	0.02	2.16
	<i>Non-perishable Food Items</i>	25.97	303.54	297.55	280.68	2.01	8.14	0.54	2.28
	<i>Perishable Food Items</i>	4.46	223.94	257.64	230.57	-13.08	-2.88	-0.52	-0.11
2.	Alcoholic Bev. & Tobacco	0.85	427.73	426.88	418.05	0.20	2.32	0.00	0.03
3.	Clothing & Footwear	8.01	280.55	264.87	254.43	5.92	10.27	0.43	0.80
4.	Housing, Water, Electricity, Gas & Fuels	27.03	274.66	278.36	236.58	-1.33	16.10	-0.35	3.95
5.	Furnishing & Household Equip. & Maintenance	4.09	280.81	276.49	267.57	1.56	4.95	0.06	0.21
6.	Health	2.31	292.40	290.64	274.20	0.61	6.64	0.01	0.16
7.	Transport	6.14	420.75	398.87	301.57	5.49	39.52	0.46	2.80
8.	Communication	2.35	139.76	139.47	138.43	0.21	0.96	0.00	0.01
9.	Recreation & Culture	1.73	250.24	249.80	250.50	0.18	-0.10	0.00	0.00
10.	Education	4.88	229.64	227.74	212.23	0.83	8.20	0.03	0.33
11.	Restaurants & Hotels	7.41	299.09	296.83	282.75	0.76	5.78	0.06	0.46
12.	Miscellaneous	4.77	363.87	367.68	316.36	-1.04	15.02	-0.06	0.87

Main contributors to month-on-month and year-on-year percentage changes are given below and detail is given in **Annexure-A**.

MONTH-ON-MONTH: Top few commodities which varied from previous month i.e. April, 2026 are given below:

FOOD

Increased: Wheat Flour (11.21%), Wheat (7.78%), Ice Cream (5.49%), Potatoes (4.01%), Bakery and Confectionary (2.40%), Meat (2.25%), Dessert Preparation (1.84%), Milk Products (1.46%), Milk Fresh (1.41%), Sweetmeat (1.37%), Cooking Oil (0.91%) and Vegetable Ghee (0.88%).

Decreased: Tomatoes (43.18%), Fresh Vegetables (24.93%), Eggs (5.99%), Onions (5.23%), Pulse Gram (1.65%), Pulse Mash (1.62%), Chicken (1.59%), Fresh Fruits (1.37%), Fish (0.98%), Pulse Moong (0.44%), Besan (0.34%), Beans (0.33%), Mustard Oil (0.23%), Gur (0.20%), Honey (0.15%), Sugar (0.12%), Gram Whole (0.11%) and Pulse Masoor (0.06%).

NON-FOOD:

Increased: Footware (29.04%), Postal Services (9.89%), Motor Fuel (7.62%), Transport Services (3.70%), Construction Wage Rates (3.64%), Major Tools & Equipments (3.20%), Garbage Collection (2.69%), Plastic Products (2.63%), Mechanical Services (2.33%), Washing Soap/Detergents/Match Box (2.30%), Tailoring (1.92%) and Household Equipments (1.77%).

Decreased: Liquified Hydrocarbons (12.02%), Electricity Charges (5.11%) and Personal Effects (4.01%).

YEAR-ON-YEAR: Top few commodities, which varied from corresponding month of previous year i.e. May 2025, are given below:

FOOD:

Increased: Wheat (62.15%), Wheat Flour (54.36%), Onions (52.73%), Tomatoes (25.81%), Meat (14.07%), Dessert Preparation (12.78%), Wheat Products (11.99%), Ice Cream (11.33%), Bakery and Confectionary (9.26%), Dry Fruits (9.00%), Fish (8.63%), Milk Products (7.87%) and Rice (7.53%).

Decreased: Potatoes (36.00%), Chicken (20.96%), Pulse Gram (18.74%), Eggs (18.53%), Besan (16.57%), Sugar (14.58%), Gram Whole (14.49%), Pulse Masoor (11.90%), Beans (6.66%), Fresh Vegetables (5.80%) and Pulse Moong (3.32%).

NON-FOOD:

Increased: Motor Fuel (51.91%), Liquified Hydrocarbons (49.42%), Transport Services (42.45%), Electricity Charges (36.47%), Personal Effects (33.87%), Postal Services (33.54%), Footware (29.33%), Gas Charges (22.91%), Major Tools & Equipments (13.04%), Newspapers (11.93%) and Solid Fuel (10.97%).

Decreased: Text Books (2.98%).

III. Rural Consumer Price Index (RCPI)

The Rural Consumer Price Index for May 2026 is increased by 0.30% over April 2026 and increased by 11.48% over corresponding month of the last year i.e. May 2025.

Table 3: Consumer Price Index (Rural) by Group of Commodities and Services (Base 2015-16)

No	Group	Group Weight (%)	Indices			% Change May 2026 Over		Impact (In % points) May 2026 Over	
			May 26	Apr 26	May 25	Apr 26	May 25	Apr 26	May 25
	General	100.00	298.51	297.63	267.77	0.30	11.48	0.30	11.48
1.	Food & Non-alcoholic Bev.	40.87	295.76	295.32	270.75	0.15	9.24	0.06	3.82
	<i>Non-perishable Food Items</i>	<i>35.08</i>	309.09	303.38	278.80	1.88	10.86	0.67	3.97
	<i>Perishable Food Items</i>	<i>5.79</i>	214.92	246.47	221.97	-12.80	-3.18	-0.61	-0.15
2.	Alcoholic Bev. & Tobacco	1.28	380.88	379.18	372.73	0.45	2.19	0.01	0.04
3.	Clothing & Footwear	9.48	292.09	290.63	272.99	0.50	7.00	0.05	0.68
4.	Housing, Water, Electricity, Gas & Fuels	18.49	257.64	260.74	217.59	-1.19	18.41	-0.19	2.76
5.	Furnishing & Household Equip. & Maintenance	4.10	309.02	304.56	293.32	1.46	5.35	0.06	0.24
6.	Health	3.51	292.42	289.45	269.64	1.03	8.45	0.04	0.30
7.	Transport	5.56	419.27	401.07	316.57	4.54	32.44	0.34	2.13
8.	Communication	1.99	130.13	130.13	128.94	0.00	0.92	0.00	0.01
9.	Recreation & Culture	1.38	293.35	293.22	294.60	0.04	-0.42	0.00	-0.01
10.	Education	2.13	264.31	262.83	242.80	0.56	8.86	0.01	0.17
11.	Restaurants & Hotels	6.19	310.88	310.03	294.57	0.27	5.54	0.02	0.38
12.	Miscellaneous	5.02	392.19	397.53	340.90	-1.34	15.05	-0.09	0.96

Main contributors to month-on-month and year-on-year percentage changes are given below and detail is given in **Annexure-B**.

MONTH-ON-MONTH Top few commodities which varied from previous month i.e. April, 2026 are given below:

FOOD

Increased: Wheat (7.10%), Wheat Flour (7.01%), Potatoes (5.39%), Ice Cream (3.91%), Milk Products (3.13%), Milk Fresh (2.08%), Dessert Preparation (1.54%), Meat (1.40%), Beverages (1.18%), Gur (1.08%), Sweetmeat (1.06%), Vegetable Ghee (0.93%) and Gram Whole (0.74%).

Decreased: Tomatoes (38.39%), Fresh Vegetables (24.69%), Chicken (7.20%), Onions (6.18%), Eggs (3.03%), Beans (0.94%), Honey (0.85%), Fish (0.60%), Pulse Moong (0.40%), Pulse Mash (0.21%) and Pulse Masoor (0.14%).

NON-FOOD

Increased: Garbage Collection (10.15%), Motor Fuels (7.85%), Doctor Clinic Fee (3.61%), Water Supply (3.55%), Solid Fuel (2.69%), Washing Soaps, Detergents and Match Box (2.34%), Hospitals Services (1.14%) and Construction Input Items (1.11%).

Decreased: Liquified Hydrocarbons (8.97%), Electricity Charges (5.11%), Personal Effects (3.85%), Recreation & Culture (0.08%) and Motor Vehicles Accessories (0.03%).

Year-On-Year: Top few commodities which varied from corresponding month of previous year i.e. May, 2025 are given below:

FOOD

Increased: Onions (63.92%), Wheat (63.44%), Wheat Flour (62.70%), Tomatoes (31.51%), Wheat Products (13.99%), Dessert Preparation (12.22%), Butter (11.71%), Ice Cream (10.25%), Meat (10.25%), Dry Fruits (9.93%), Milk Powder (9.55%) and Milk Fresh (7.36%).

Decreased: Potatoes (44.33%), Pulse Gram (18.75%), Besan (15.84%), Gram Whole (15.83%), Chicken (15.01%), Eggs (14.48%), Sugar (14.03%), Pulse Masoor (8.21%), Condiments and Spices (5.13%), Pulse Moong (3.12%), Beans (2.63%), Tea (2.24%), Honey (1.48%), Fresh Vegetables (0.79%), Pulse Mash (0.71%) and Fresh Fruits (0.40%).

NON-FOOD

Increased: Motor Fuels (55.73%), Liquified Hydrocarbons (45.73%), Electricity Charges (36.47%), Personal Effects (29.79%), Newspapers (16.67%), Doctor Clinic Fee (15.28%), Solid Fuel (15.23%), Construction Input Items (15.10%), Transport Services (13.72%), Plastic Products (12.42%) and Dental Services (12.39%).

Decreased: Text Books (3.58%).

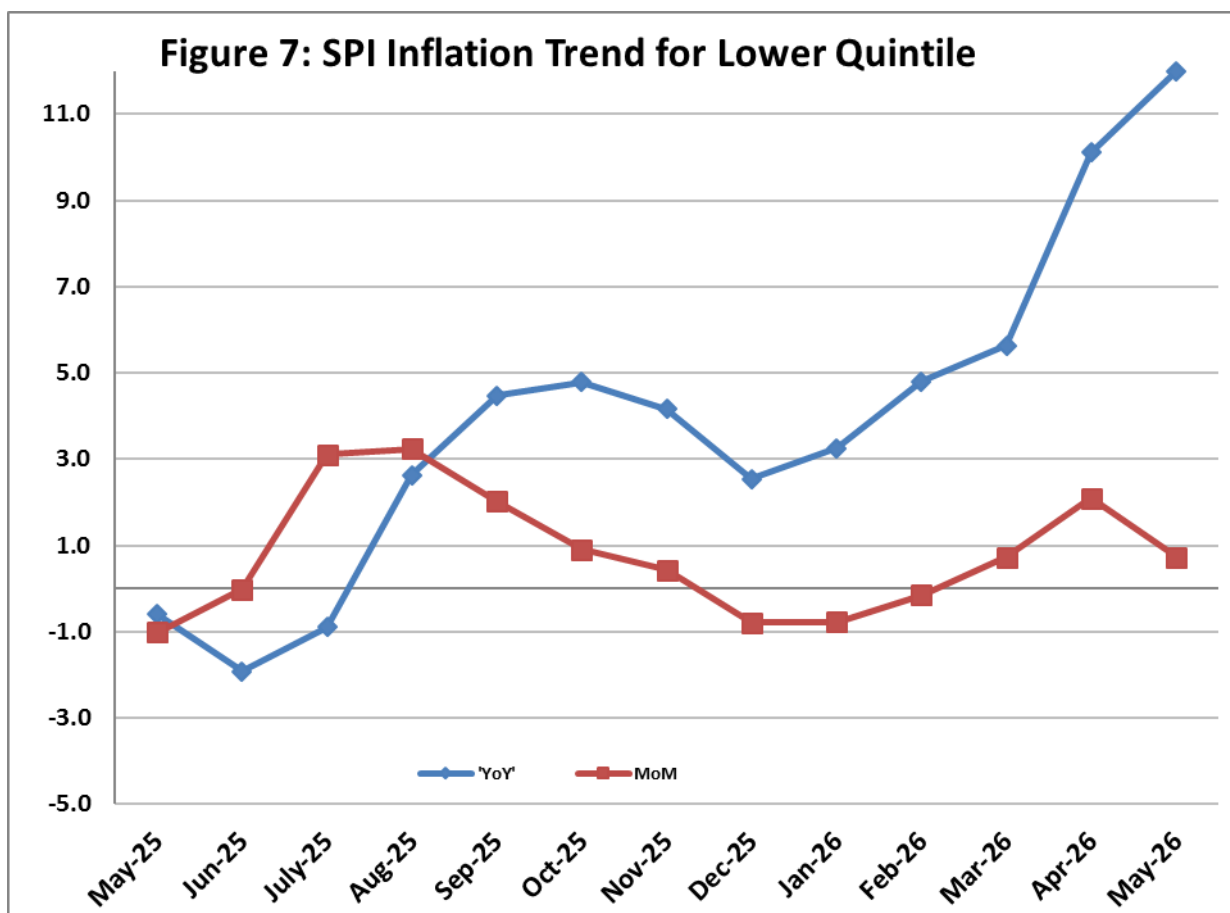
IV. Sensitive Price Indicator (SPI)

Quintile-wise percentage changes YoY and MoM are given below in Table 4. The series from May 2025 to May 2026 is also graphed below in Figure 7.

Table 4: Sensitive Price Indicator (Base 2015-16)					
Quintiles	Indices			% Change May 2026 Over	
	May 2026	Apr 2026	Mar 2025	Apr 2026	May 2025
1	335.21	332.79	299.32	0.73	11.99
2	340.06	337.16	296.19	0.86	14.81
3	362.88	359.26	320.76	1.01	13.13
4	352.42	348.01	311.69	1.27	13.07
5	360.23	354.88	314.38	1.51	14.58
Combined	357.70	353.20	311.29	1.27	14.91

Table 4.1: Weekly Percentage Change of SPI During May 2026				
Quintiles	% Change over Previous week			
	07-05-2026	14-05-2026	21-05-2026	28-05-2026 *
Quintile 1	0.69	0.39	-0.06	-
Combined	0.79	0.47	-0.33	-

* The SPI for the week ended on 28-05-2026 was postponed due to Eid holidays.



V. Wholesale Price Index

The Wholesale Price Index for **May 2026** decreased by **0.75%** over **April 2026** and increased by **12.71%** over the corresponding month of the last year i.e. **May, 2025**. YoY and MoM movements from May, 2025 to May, 2026 are also graphed below in Figure 8.

Table 5: Wholesale Price Index by Group of Commodities (Base 2015-16)

No	Group	Group Weight (%)	Indices			% Change May 2026 Over		Impact (In % points) May 2026 Over	
			May 26	Apr 26	May 25	Apr 26	May 25	Apr 26	May 25
	General	100.00	348.07	350.71	308.81	-0.75	12.71	-0.75	12.71
1	Agriculture Forestry & Fishery	25.77	278.55	280.42	275.89	-0.67	0.96	-0.14	0.22
2	Ores/Minerals, Elec., Gas & Water	12.01	366.27	372.85	337.63	-1.76	8.48	-0.23	1.11
3	Food, Beverages, Tobacco, Textiles & Leather Products	31.11	300.62	296.22	281.29	1.49	6.87	0.39	1.95
	i. Food Products, Beverages & Tobacco	20.07	324.08	318.53	297.11	1.74	9.08	0.32	1.75
	ii. Textiles & Apparels	10.33	261.46	260.94	257.62	0.20	1.49	0.02	0.13
	iii. Leather Products	0.71	207.33	179.03	178.56	15.81	16.11	0.06	0.07
4	Other Transportable Goods	22.40	460.64	474.96	338.50	-3.01	36.08	-0.91	8.86
5	Metal Product, Machinery & Equipment	8.72	408.65	403.22	388.38	1.35	5.22	0.13	0.57

Main contributors to month-on-month and year-on-year percentage changes are given below and detail is given in **Annexure-C**.

MONTH-ON-MONTH: Top few commodities which varied from previous month are given below:

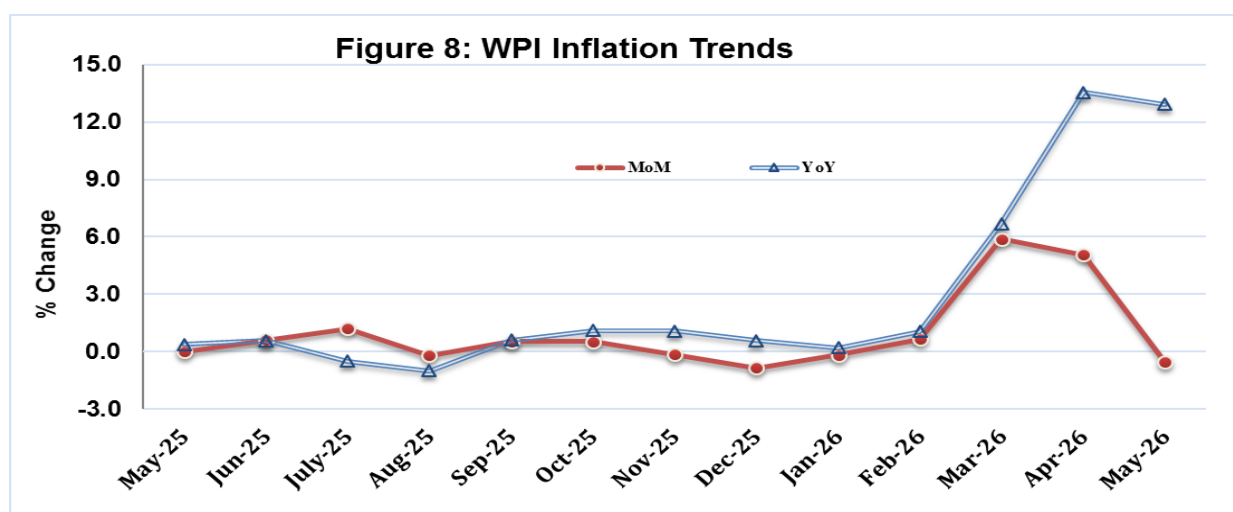
Increased: Footwears (51.86%), Sorghum / Jowar (26.29%), Wheat Flour (14.31%), Wheat (12.29%), Mobil Oil (10.29%), Motor Spirit (8.29%), Coal not Agglomerated (7.03%), Maize (5.81%), Bicycles (4.38%), Fertilizers & Millet / Bajra (4.00%) each, Other Oil Seeds (2.78%), Chemicals (2.77%) and Soaps & Detergents (2.66%).

Decreased: Kerosene Oil (24.98%), Vegetables (20.64%), Diesel Oil (12.28%), Eggs (7.75%), Electrical Energy (3.93%), Poultry (3.87%), Edible Roots / Potatoes (3.32%), Other Cereal Flour (2.77%), Dry Fruits (2.51%), Fresh Fruits (2.24%), Steel Bar & Sheets (1.25%), Pulses (1.24%), Natural Gas Liquefied (1.01%), Rice (0.70%) and Stimulant & Spice Crops (0.61%).

YEAR-ON-YEAR: Top few commodities which varied from previous year are given below:

Increased: Sorghum / Jowar (121.21%), Kerosene Oil (93.72%), Diesel Oil (70.23%), Wheat (63.48%), Motor Spirit (62.21%), Wheat Flour (56.08%), Footwears (51.86%), Furnace Oil (44.21%), Dried Fruits & Nuts (28.85%), Dyeing Material (22.99%), Printing Paper (18.24%) and Other Food Products (18.06%).

Decreased: Edible Roots / Potatoes (48.11%), Stimulant & Spice Crops (33.87%), Poultry (23%), Other Cereal Flour (21.93%), Eggs (21.15%), Sugar Refined (15.35%), Pulses (14.87%), Millet / Bajra (11.01%), Cotton Seeds (9.56%), Fibre Crops (7.09%) and Sugar Crops (3.52%).



Annexure A: CPI (Urban) Index Numbers by Commodity Groups & Commodities (2015-16=100)

Item and Specification	Weight	Index Numbers			% Change in May 2026 over	
		May 26	Apr 26	May 25	Apr 2026	May 2025
General	100.0000	291.58	289.61	260.84	+ 0.68	+ 11.79
Food and non-alcoholic Beverages	30.4215	291.88	291.71	273.34	+ 0.06	+ 6.78
01 Wheat	0.6120	307.41	285.23	189.58	+ 7.78	+ <u>62.15</u>
02 Wheat flour	3.0075	301.66	271.25	195.42	+ 11.21	+ <u>54.36</u>
03 Wheat products	0.0936	305.61	305.37	272.88	+ 0.08	+ 11.99
04 Besan	0.0830	212.49	213.21	254.68	- 0.34	- 16.57
05 Rice	1.1804	332.93	331.65	309.63	+ 0.39	+ 7.53
06 Bakery and confectionary	0.4770	293.56	286.67	268.69	+ 2.40	+ 9.26
07 Nimco	0.1224	307.54	305.73	299.53	+ 0.59	+ 2.67
08 Meat	2.0411	389.80	381.23	341.71	+ 2.25	+ 14.07
09 Chicken	1.3631	278.35	282.84	352.18	- 1.59	- 20.96
10 Fish	0.3855	225.94	228.18	208.00	- 0.98	+ 8.63
11 Milk fresh	7.1070	281.17	277.27	263.62	+ 1.41	+ 6.66
12 Milk products	0.6407	286.91	282.79	265.98	+ 1.46	+ 7.87
13 Milk powder	0.3106	334.44	332.90	312.06	+ 0.46	+ 7.17
14 Eggs	0.5083	269.54	286.70	330.84	- 5.99	- 18.53
15 Butter	0.0932	503.61	498.09	444.06	+ 1.11	+ 13.41
16 Mustard oil	0.0120	318.42	319.15	309.96	- 0.23	+ 2.73
17 Cooking oil	1.1016	340.53	337.47	327.86	+ 0.91	+ 3.86
18 Vegetable ghee	1.0324	359.95	356.80	344.40	+ 0.88	+ 4.52
19 Dry fruits	0.3299	324.98	323.85	298.15	+ 0.35	+ 9.00
20 Fresh fruits	1.4363	305.27	309.51	294.49	- 1.37	+ 3.66
21 Pulse masoor	0.1624	177.01	177.12	200.93	- 0.06	- 11.90
22 Pulse moong	0.1697	238.07	239.13	246.25	- 0.44	- 3.32
23 Pulse mash	0.1152	200.23	203.53	191.15	- 1.62	+ 4.75
24 Pulse gram	0.1660	204.99	208.43	252.26	- 1.65	- 18.74
25 Gram whole	0.0912	236.51	236.78	276.58	- 0.11	- 14.49
26 Beans	0.0408	345.68	346.84	370.34	- 0.33	- 6.66
27 Potatoes	0.4496	162.96	156.68	254.64	+ 4.01	- 36.00
28 Onions	0.5928	170.28	179.68	111.49	- 5.23	+ <u>52.73</u>
29 Tomatoes	0.3459	137.04	241.18	108.93	- 43.18	+ 25.81
30 Fresh vegetables	1.5306	204.80	272.81	217.42	- 24.93	- 5.80
31 Sugar	1.1130	240.07	240.37	281.05	- 0.12	- 14.58
32 Gur	0.0379	260.04	260.57	255.15	- 0.20	+ 1.92
33 Honey	0.1017	222.37	222.71	221.90	- 0.15	+ 0.21
34 Sweetmeat	0.3535	349.64	344.90	327.96	+ 1.37	+ 6.61
35 Ice cream	0.1044	222.04	210.48	199.45	+ 5.49	+ 11.33
36 Condiments and Spices	1.3340	383.44	382.79	373.79	+ 0.17	+ 2.58
37 Dessert preparation	0.0419	307.25	301.71	272.44	+ 1.84	+ 12.78
38 Tea	0.8427	273.67	273.67	273.67	+ 0.00	+ 0.00
39 Beverages	0.8906	270.07	267.99	261.14	+ 0.78	+ 3.42
Alcoholic Beverages, Tobacco	0.8540	427.73	426.88	418.05	+ 0.20	+ 2.32
40 Cigarettes	0.7167	415.90	415.56	410.06	+ 0.08	+ 1.42
41 Pan prepared	0.1373	489.47	486.00	459.74	+ 0.71	+ 6.47
Clothing and footwear	8.0096	280.55	264.87	254.43	+ 5.92	+ 10.27
42 Cotton cloth	2.2227	310.08	305.69	297.59	+ 1.44	+ 4.20
43 Woollen cloth	0.8361	265.04	264.21	243.05	+ 0.31	+ 9.05
44 Readymade garments	1.3196	232.21	230.64	220.91	+ 0.68	+ 5.12
45 Woollen readymade garments	0.4307	273.83	273.83	256.71	+ 0.00	+ 6.67
46 Tailoring	1.0741	261.15	256.23	236.65	+ 1.92	+ 10.35
47 Hosiery	0.4070	248.47	246.85	239.04	+ 0.66	+ 3.94
48 Dupatta	0.1713	211.74	210.99	205.09	+ 0.36	+ 3.24
49 Cleaning and laundering	0.0665	297.37	293.55	268.28	+ 1.30	+ 10.84
50 Footware	1.4816	320.07	248.03	247.48	+ 29.04	+ 29.33
Housing, water, Elec., Gas and Other Fuels	27.0332	274.66	278.36	236.58	- 1.33	+ 16.10
51 House rent	19.2558	180.88	180.88	170.49	+ 0.00	+ 6.09
52 Construction input items	0.3765	280.79	278.63	266.21	+ 0.78	+ 5.48
53 Construction wage rates	0.2025	245.48	236.86	225.22	+ 3.64	+ 9.00
54 Water supply	0.5269	247.62	246.74	228.99	+ 0.36	+ 8.14
55 Garbage collection	0.1064	275.69	268.46	262.68	+ 2.69	+ 4.95
56 Electricity charges	4.5562	286.39	301.82	209.86	- 5.11	+ 36.47
57 Gas charges	1.0807	1817.96	1817.96	1479.08	+ 0.00	+ 22.91
58 Liquefied Hydrocarbons	0.5064	496.32	564.16	332.17	- 12.02	+ 49.42

Annexure A: CPI (Urban) Index Numbers by Commodity Groups & Commodities (2015-16=100)

Item and Specification	Weight	Index Numbers			% Change in May 2026 over	
		May 26	Apr 26	May 25	Apr 2026	May 2025
59 Solid Fuel	0.4218	250.74	249.04	225.95	+ 0.68	+ 10.97
Furnishing and household equipments	4.0937	280.81	276.49	267.57	+ 1.56	+ 4.95
60 Furniture and furnishing	0.4750	271.74	269.47	260.05	+ 0.84	+ 4.50
61 Carpets	0.0308	159.35	157.91	150.80	+ 0.91	+ 5.67
62 Household textiles	0.3420	217.08	216.50	209.85	+ 0.27	+ 3.45
63 Household equipments	1.0032	288.41	283.40	271.42	+ 1.77	+ 6.26
64 Plastic products	0.0536	245.08	238.80	223.40	+ 2.63	+ 9.70
65 Major tools & equipments	0.0084	278.56	269.92	246.43	+ 3.20	+ 13.04
66 Washing soap/detergents/match	1.4112	334.37	326.86	322.59	+ 2.30	+ 3.65
67 Household servant	0.7695	214.00	213.55	199.94	+ 0.21	+ 7.03
Health	2.3098	292.40	290.64	274.20	+ 0.61	+ 6.64
68 Drugs and medicines	1.0735	312.94	311.93	293.80	+ 0.32	+ 6.51
69 Therapeutic Appliances and Equipments	0.0054	157.61	157.25	155.03	+ 0.23	+ 1.66
70 Doctor (MBBS) clinic fee	0.4044	371.76	365.70	345.44	+ 1.66	+ 7.62
71 Dental services	0.0156	240.43	239.09	226.43	+ 0.56	+ 6.18
72 Medical tests	0.2367	230.90	230.51	214.86	+ 0.17	+ 7.47
73 Hospitals services	0.5742	226.15	225.41	214.26	+ 0.33	+ 5.55
Transport	6.1368	420.75	398.87	301.57	+ 5.49	+ 39.52
74 Motor vehicles	0.8097	267.70	267.71	264.21	+ 0.00	+ 1.32
75 Motor vehicle accessories	0.1941	274.40	273.72	264.05	+ 0.25	+ 3.92
76 Motor fuel	2.9088	525.98	488.73	346.24	+ 7.62	+ 51.91
77 Mechanical services	0.4290	260.64	254.70	237.93	+ 2.33	+ 9.54
78 Motor vehicle tax	0.0482	399.23	399.23	399.23	+ 0.00	+ 0.00
79 Transport services	1.7470	372.65	359.34	261.60	+ 3.70	+ 42.45
Communication	2.3536	139.76	139.47	138.43	+ 0.21	+ 0.96
80 Postal services	0.0190	295.92	269.29	221.59	+ 9.89	+ 33.54
81 Communication apparatus	0.4524	192.35	191.96	188.51	+ 0.20	+ 2.04
82 Communication Services	1.8822	125.55	125.55	125.55	+ 0.00	+ 0.00
Recreation and culture	1.7301	250.24	249.80	250.50	+ 0.18	- 0.10
83 Recreation and culture	0.6478	157.92	157.71	155.01	+ 0.13	+ 1.88
84 Text books	0.6655	297.49	297.49	306.62	+ 0.00	- 2.98
85 Newspapers	0.0716	242.82	242.82	216.94	+ 0.00	+ 11.93
86 stationery	0.3452	333.94	332.11	328.48	+ 0.55	+ 1.66
Education	4.8807	229.64	227.74	212.23	+ 0.83	+ 8.20
87 Education	4.8807	229.64	227.74	212.23	+ 0.83	+ 8.20
Restaurants and hotels	7.4050	299.09	296.83	282.75	+ 0.76	+ 5.78
88 Readymade food	5.5235	306.49	303.87	289.97	+ 0.86	+ 5.70
89 Marriage Hall Charges	1.7514	284.01	282.73	267.51	+ 0.45	+ 6.17
90 Accommodation Services	0.1301	187.71	187.71	181.32	+ 0.00	+ 3.52
Misc. goods and services	4.7720	363.87	367.68	316.36	- 1.04	+ 15.02
91 Personal Grooming Services	0.8001	280.62	278.53	261.85	+ 0.75	+ 7.17
92 Electrical Appliances for Per	0.0465	199.01	197.16	190.32	+ 0.94	+ 4.57
93 Appliances/Articles/Products	2.9807	299.98	298.15	280.74	+ 0.61	+ 6.85
94 Personal Effects n.e.c.	0.9447	644.07	670.96	481.13	- 4.01	+ 33.87

Annexure B: CPI (Rural) Index Numbers by Commodity Groups & Commodities (2015-16=100)

Item and Specification	Weight	Index Numbers			% Change in May 2026 over	
		May 26	Apr 26	May 25	Apr 2026	May 2025
General	100.0000	298.51	297.63	267.77	+ 0.30	+ 11.48
Food and non-alcoholic Beverages	40.8668	295.76	295.32	270.75	+ 0.15	+ 9.24
01 Wheat	3.4736	317.68	296.63	194.37	+ 7.10	+ 63.44
02 Wheat Flour	3.4297	317.99	297.15	195.45	+ 7.01	+ 62.70
03 Wheat Products	0.1068	311.05	309.77	272.88	+ 0.41	+ 13.99
04 Besan	0.0728	230.76	229.79	274.19	+ 0.42	- 15.84
05 Rice	1.5501	430.10	428.68	411.38	+ 0.33	+ 4.55
06 Bakery and Confectionary	0.3702	332.69	331.12	310.06	+ 0.47	+ 7.30
07 Nimco	0.0774	321.44	320.17	302.61	+ 0.40	+ 6.22
08 Meat	1.7146	398.45	392.93	361.42	+ 1.40	+ 10.25
09 Chicken	1.4641	291.63	314.26	343.15	- 7.20	- 15.01
10 Fish	0.2640	243.80	245.26	228.81	- 0.60	+ 6.55
11 Milk fresh	10.3803	281.77	276.04	262.46	+ 2.08	+ 7.36
12 Milk products	0.9624	277.06	268.64	260.40	+ 3.13	+ 6.40
13 Milk powder	0.1062	305.11	305.00	278.52	+ 0.04	+ 9.55
14 Eggs	0.5665	264.32	272.57	309.07	- 3.03	- 14.48
15 Butter	0.3333	340.81	342.32	305.08	- 0.44	+ 11.71
16 Mustard oil	0.0136	344.56	344.07	325.68	+ 0.14	+ 5.80
17 Cooking oil	0.6011	382.72	381.00	364.00	+ 0.45	+ 5.14
18 Vegetable ghee	2.3764	399.94	396.25	377.83	+ 0.93	+ 5.85
19 Dry fruits	0.2496	400.11	400.06	363.96	+ 0.01	+ 9.93
20 Fresh fruits	1.4505	332.43	332.30	333.76	+ 0.04	- 0.40
21 Pulse Masoor	0.2076	204.30	204.59	222.58	- 0.14	- 8.21
22 Pulse Moong	0.2510	263.35	264.41	271.84	- 0.40	- 3.12
23 Pulse Mash	0.1465	203.79	204.21	205.24	- 0.21	- 0.71
24 Pulse Gram	0.2751	213.85	213.56	263.21	+ 0.14	- 18.75
25 Gram Whole	0.1116	253.64	251.77	301.34	+ 0.74	- 15.83
26 Beans	0.0896	395.68	399.45	406.38	- 0.94	- 2.63
27 Potatoes	0.7437	142.45	135.17	255.87	+ 5.39	- 44.33
28 Onions	0.8965	162.30	172.99	99.01	- 6.18	+ 63.92
29 Tomatoes	0.5069	130.27	211.44	99.06	- 38.39	+ 31.51
30 Fresh Vegetables	2.0947	200.31	265.98	201.91	- 24.69	- 0.79
31 Sugar	2.0296	241.95	241.38	281.44	+ 0.24	- 14.03
32 Gur	0.1522	259.69	256.92	248.53	+ 1.08	+ 4.49
33 Honey	0.0296	224.09	226.02	227.45	- 0.85	- 1.48
34 Sweetmeat	0.3967	313.63	310.35	293.18	+ 1.06	+ 6.98
35 Ice Cream	0.0568	219.77	211.51	199.34	+ 3.91	+ 10.25
36 Condiments and Spices	1.4919	293.06	293.02	308.91	+ 0.01	- 5.13
37 Dessert Preparation	0.0133	301.33	296.76	268.52	+ 1.54	+ 12.22
38 Tea	1.2566	271.09	271.09	277.31	+ 0.00	- 2.24
39 Beverages	0.5537	261.60	258.55	250.86	+ 1.18	+ 4.28
Alcoholic Beverages, Tobacco	1.2786	380.88	379.18	372.73	+ 0.45	+ 2.19
40 Cigarettes	1.2364	380.54	379.01	372.90	+ 0.40	+ 2.05
41 Pan Prepared	0.0422	391.11	384.22	367.53	+ 1.79	+ 6.42
Clothing and footwear	9.4826	292.09	290.63	272.99	+ 0.50	+ 7.00
42 Cotton Cloth	2.8381	317.39	315.87	301.16	+ 0.48	+ 5.39
43 Woollen Cloth	1.0959	286.89	285.00	255.94	+ 0.66	+ 12.09
44 Readymade Garments	1.1345	268.15	267.44	250.91	+ 0.27	+ 6.87
45 Woollen Readymade Garments	0.5401	334.48	334.48	309.66	+ 0.00	+ 8.02
46 Tailoring	1.2999	278.11	277.55	259.23	+ 0.20	+ 7.28
47 Hosiery	0.4322	363.46	360.95	347.56	+ 0.70	+ 4.57
48 Dupatta	0.2078	267.96	265.39	252.46	+ 0.97	+ 6.14
49 Cleaning and Laundering	0.0176	269.53	267.84	258.34	+ 0.63	+ 4.33
50 Footware	1.9165	256.03	253.81	238.62	+ 0.87	+ 7.30
Housing, water, Elec., Gas and Other Fuels	18.4853	257.64	260.74	217.59	- 1.19	+ 18.41
51 House Rent	8.6110	192.47	192.47	178.31	+ 0.00	+ 7.94
52 Construction Input Items	0.6306	291.33	288.14	253.11	+ 1.11	+ 15.10
53 Construction Wage Rates	0.2526	257.36	256.00	242.06	+ 0.53	+ 6.32
54 Water Supply	0.0645	337.27	325.72	315.64	+ 3.55	+ 6.85
55 Garbage Collection	0.0080	225.10	204.36	204.36	+ 10.15	+ 10.15
56 Electricity Charges	3.4431	286.39	301.82	209.86	- 5.11	+ 36.47
57 Liquefied Hydrocarbons	0.9994	447.55	491.63	307.10	- 8.97	+ 45.73
58 Solid Fuel	4.4761	312.68	304.50	271.35	+ 2.69	+ 15.23

Annexure B: CPI (Rural) Index Numbers by Commodity Groups & Commodities (2015-16=100)

Item and Specification	Weight	Index Numbers			% Change in May 2026 over			
		May 26	Apr 26	May 25	Apr 2026	May 2025		
<i>Furnishing and household equipments</i>	4.1031	309.02	304.56	293.32	+	1.46	+	5.35
59 Furniture and Furnishing	0.5786	303.85	302.76	289.91	+	0.36	+	4.81
60 Household Textiles	0.4382	263.51	262.22	242.03	+	0.49	+	8.87
61 Household Equipments	1.2774	306.95	303.63	292.13	+	1.09	+	5.07
62 Plastic Products	0.0776	335.64	332.59	298.56	+	0.92	+	12.42
63 Major Tools and Equipments	0.0324	256.20	255.51	243.40	+	0.27	+	5.26
64 Washing Soaps, Detergents and	1.6989	323.86	316.45	309.33	+	2.34	+	4.70
<i>Health</i>	3.5141	292.42	289.45	269.64	+	1.03	+	8.45
65 Drugs and Medicines	1.5792	336.44	335.62	319.02	+	0.24	+	5.46
66 Doctor Clinic Fee	0.5128	361.44	348.84	313.52	+	3.61	+	15.28
67 Dental Services	0.0181	268.29	268.29	238.72	+	0.00	+	12.39
68 Medical Tests	0.3967	248.91	248.01	227.82	+	0.36	+	9.26
69 Hospitals Services	1.0073	205.85	203.52	186.91	+	1.14	+	10.13
<i>Transport</i>	5.5580	419.27	401.07	316.57	+	4.54	+	32.44
70 Motor Vehicles	0.7305	194.85	194.84	193.17	+	0.01	+	0.87
71 Motor Vehicles Accessories	0.1572	276.18	276.26	271.46	-	0.03	+	1.74
72 Motor Fuels	2.4932	540.38	501.05	346.99	+	7.85	+	55.73
73 Mechanical Services	0.3645	237.47	237.30	232.83	+	0.07	+	1.99
74 Motor Vehicle Tax	0.0174	342.03	342.03	342.03	+	0.00	+	0.00
75 Transport Services	1.7952	392.59	390.90	345.24	+	0.43	+	13.72
<i>Communication</i>	1.9940	130.13	130.13	128.94	+	0.00	+	0.92
76 Postal Services	0.0070	179.32	179.32	179.32	+	0.00	+	0.00
77 Communication Apparatus	0.3362	170.22	170.22	163.12	+	0.00	+	4.35
78 Communication Services	1.6508	121.76	121.76	121.76	+	0.00	+	0.00
<i>Recreation and culture</i>	1.3764	293.35	293.22	294.60	+	0.04	-	0.42
79 Recreation and Culture	0.4763	255.23	255.43	254.32	-	0.08	+	0.36
80 Text Books	0.5047	305.32	305.32	316.67	+	0.00	-	3.58
81 Newspapers	0.0230	282.94	282.94	242.52	+	0.00	+	16.67
82 Stationery	0.3724	326.52	325.79	319.44	+	0.22	+	2.22
<i>Education</i>	2.1342	264.31	262.83	242.80	+	0.56	+	8.86
83 Education	2.1342	264.31	262.83	242.80	+	0.56	+	8.86
<i>Restaurants and hotels</i>	6.1895	310.88	310.03	294.57	+	0.27	+	5.54
84 Readymade Food	3.8001	337.32	336.03	322.10	+	0.38	+	4.73
85 Marriage Hall Charges	2.2525	278.29	278.10	259.14	+	0.07	+	7.39
86 Accommodation Services	0.1369	113.48	113.48	113.40	+	0.00	+	0.07
<i>Misc. goods and services</i>	5.0174	392.19	397.53	340.90	-	1.34	+	15.05
87 Personal Grooming Services	1.5363	341.46	340.49	310.47	+	0.28	+	9.98
88 Appliances/Articles/Products	2.2746	274.86	272.88	265.18	+	0.73	+	3.65
89 Personal Effects n.e.c.	1.2065	678.00	705.16	522.40	-	3.85	+	29.79

Annexure C: Wholesale Price Indices by Major Groups & Commodities (2015-16=100)

Item and Specification	Weight	Index Numbers			% Change in May 2026 over			
		May 26	Apr 26	May 25	Apr 2026	May 2025		
General	100.0000	348.07	350.71	308.81	-	0.75	+	12.71
Agriculture Forestry & Fishery	25.7674	278.55	280.42	275.89	-	0.67	+	0.96
001 Wheat	0.6297	304.53	271.19	186.28	+	12.29	+	63.48
002 Maize	0.6764	347.70	328.61	294.62	+	5.81	+	18.02
003 Rice	2.4413	316.35	318.58	310.51	-	0.70	+	1.88
004 Sorghum / Jowar	0.0214	645.20	510.88	291.67	+	26.29	+	121.21
005 Millet / Bajra	0.0374	302.04	290.41	339.42	+	4.00	-	11.01
006 Vegetables	1.2441	222.73	280.66	201.06	-	20.64	+	10.78
007 Fresh Fruits	1.5144	323.81	331.24	299.45	-	2.24	+	8.13
008 Dry Fruits	0.2478	376.75	386.46	371.81	-	2.51	+	1.33
009 Cotton Seeds	1.1511	180.39	179.81	199.45	+	0.32	-	9.56
010 Other Oil Seeds	0.0722	285.82	278.08	269.84	+	2.78	+	5.92
011 Edible Roots / Potatoes	0.2540	148.68	153.78	286.52	-	3.32	-	48.11
012 Stimulant & Spice Crops	0.1634	300.51	302.34	454.44	-	0.61	-	33.87
013 Pulses	0.4901	231.30	234.21	271.69	-	1.24	-	14.87
014 Sugar Crops	1.0725	355.12	355.12	368.06	+	0.00	-	3.52
015 Fibre Crops	5.3169	296.11	296.11	318.69	+	0.00	-	7.09
016 Unmanufactured Tobacco	0.0742	572.56	567.32	571.19	+	0.92	+	0.24
017 Poultry	0.5633	265.86	276.55	345.29	-	3.87	-	23.00
018 Raw Milk from Bovine Animals	7.0279	273.71	270.23	252.40	+	1.29	+	8.44
019 Eggs	0.5034	264.77	287.00	335.79	-	7.75	-	21.15
020 Raw Animal Materials / Wool	0.0351	300.17	300.17	254.30	+	0.00	+	18.04
021 Hides, Skins & Fur Skins, Raw	0.4834	60.14	60.14	59.39	+	0.00	+	1.26
022 Fuel Wood in Logs	0.0179	246.57	245.08	214.14	+	0.61	+	15.14
023 Fish Live Fresh or Chilled	1.7295	240.10	240.20	219.65	-	0.04	+	9.31
Ores/Minerals, Elec., Gas & Water	12.0069	366.27	372.85	337.63	-	1.76	+	8.48
024 Coal not Agglomerated	0.7508	234.58	219.17	219.17	+	7.03	+	7.03
025 Natural Gas Liquefied	5.7065	457.82	462.47	418.89	-	1.01	+	9.29
026 Salt & Pure Sodium Chloride	0.0584	454.16	443.89	407.96	+	2.31	+	11.32
027 Electrical Energy	5.4912	288.19	299.98	268.63	-	3.93	+	7.28
Food, Beverages, Tobacco, Textile	31.1122	300.62	296.22	281.29	+	1.49	+	6.87
Food Products, Beverages & Tobacco	20.0718	324.08	318.53	297.11	+	1.74	+	9.08
028 Meat of Animals	3.4559	382.22	380.56	336.98	+	0.44	+	13.43
029 Vegetables & Fruit Juice	0.0058	253.73	253.73	252.99	+	0.00	+	0.29
030 Dried Fruits & Nuts	0.1733	503.80	498.08	391.01	+	1.15	+	28.85
031 Fruit Juices	0.3880	294.65	291.06	281.90	+	1.23	+	4.52
032 Vegetable Oils Refined	1.9242	304.49	303.70	283.20	+	0.26	+	7.52
033 Vegetable Ghee	1.5632	381.80	379.26	363.27	+	0.67	+	5.10
034 Oil Cakes	0.9611	280.03	275.73	256.43	+	1.56	+	9.20
035 Processed Liquid Milk	4.4437	338.91	338.91	320.92	+	0.00	+	5.61
036 Milk & Cream in Solid Form	0.0316	320.94	320.39	297.87	+	0.17	+	7.74
037 Ice Cream	0.0047	211.49	209.56	200.56	+	0.92	+	5.45
038 Dairy Products N.E.C	0.0117	344.69	343.55	332.63	+	0.33	+	3.63
039 Wheat Flour	2.3034	309.62	270.86	198.37	+	14.31	+	56.08
040 Other Cereal Flour	0.0604	212.01	218.05	271.55	-	2.77	-	21.93
041 Sugar Refined	1.7975	240.50	238.98	284.12	+	0.64	-	15.35
042 Chocolate	0.0139	144.39	144.39	143.40	+	0.00	+	0.69
043 Sugar Confectionary	0.0738	317.00	317.00	315.04	+	0.00	+	0.62
044 Coffee & Tea	0.7303	270.80	270.52	269.34	+	0.10	+	0.54
045 Spices	0.1449	339.07	338.27	301.74	+	0.24	+	12.37
046 Other Food Products	0.0336	365.02	364.96	309.17	+	0.02	+	18.06
047 Mineral Water	0.0207	222.04	217.16	214.89	+	2.25	+	3.33
048 Beverages	0.6303	267.78	265.36	261.49	+	0.91	+	2.41
049 Tobacco Products	1.2998	301.20	301.20	301.20	+	0.00	+	0.00
Textiles & Apparels	10.3289	261.46	260.94	257.62	+	0.20	+	1.49
050 Cotton Yarn	5.2491	239.61	239.61	239.61	+	0.00	+	0.00
051 Nylon Yarn	0.1719	95.24	95.24	95.24	+	0.00	+	0.00
052 Blended Yarn	0.1689	148.12	148.12	148.12	+	0.00	+	0.00
053 Woven Fabrics	0.0128	307.27	307.27	265.43	+	0.00	+	15.76
054 Cotton Fabrics	0.6343	378.83	378.77	348.15	+	0.02	+	8.81
055 Other Fabrics	1.1016	276.74	274.96	271.53	+	0.65	+	1.92
056 Silk & Reyon Fabrics	0.7350	406.64	403.68	400.63	+	0.73	+	1.50
057 Towels	0.1235	209.23	209.23	204.56	+	0.00	+	2.28

Annexure C: Wholesale Price Indices by Major Groups & Commodities (2015-16=100)

Item and Specification	Weight	Index Numbers			% Change in May 2026 over	
		May 26	Apr 26	May 25	Apr 2026	May 2025
058 Blankets	0.0029	168.88	168.88	158.72	+ 0.00	+ 6.40
059 Bed Sheets	0.0913	225.37	222.66	203.39	+ 1.22	+ 10.81
060 Quilts	0.0019	243.70	243.70	243.00	+ 0.00	+ 0.29
061 Woollen Carpets	0.0383	184.00	184.00	177.15	+ 0.00	+ 3.87
062 Synthetic Carpets	0.0566	160.49	160.49	156.16	+ 0.00	+ 2.77
063 Hosiery Products	0.8832	217.84	217.84	213.80	+ 0.00	+ 1.89
064 Readymade Garments	1.0576	281.38	280.53	278.68	+ 0.30	+ 0.97
Leather Products	0.7115	207.33	179.03	178.56	+ 15.81	+ 16.11
065 Leather Without Hair	0.2973	175.98	175.98	174.84	+ 0.00	+ 0.65
066 Other Leather N.E.C	0.2567	141.18	141.18	141.18	+ 0.00	+ 0.00
067 Footwears	0.1575	374.30	246.48	246.48	+ 51.86	+ 51.86
Other Transportable Goods	22.3979	460.64	474.96	338.50	- 3.01	+ 36.08
068 Timber	0.0165	247.37	247.37	243.47	+ 0.00	+ 1.60
069 Printing Paper	0.4279	305.81	305.81	258.64	+ 0.00	+ 18.24
070 Hard Board	0.1579	261.62	261.62	261.62	+ 0.00	+ 0.00
071 Motor Spirit	1.6268	580.45	536.00	357.83	+ 8.29	+ 62.21
072 Diesel Oil	5.4849	552.27	629.56	324.42	- 12.28	+ 70.23
073 Kerosene Oil	0.2151	635.10	846.62	327.85	- 24.98	+ 93.72
074 Furnace Oil	3.2664	766.10	766.10	531.23	+ 0.00	+ 44.21
075 Mobil Oil	0.7114	280.91	254.69	251.76	+ 10.29	+ 11.58
076 Chemicals	1.7720	310.32	301.95	271.62	+ 2.77	+ 14.25
077 Dyeing Material	0.1539	335.16	335.16	272.52	+ 0.00	+ 22.99
078 Fertilizers	2.8657	304.00	292.30	272.74	+ 4.00	+ 11.46
079 Pesticides	0.2763	244.06	242.14	217.59	+ 0.79	+ 12.17
080 Insecticides	0.1276	197.82	197.82	174.37	+ 0.00	+ 13.45
081 Paints & Varnishes	0.1916	278.92	279.10	278.01	- 0.06	+ 0.33
082 Medicines	1.1428	393.83	393.79	384.24	+ 0.01	+ 2.50
083 Soaps & Detergents	0.8168	246.64	240.24	240.71	+ 2.66	+ 2.46
084 Auto Tyres	0.2703	275.82	272.37	262.58	+ 1.27	+ 5.04
085 Plastic Products	0.4550	223.24	218.10	208.67	+ 2.36	+ 6.98
086 Glass sheets	0.2089	401.67	401.67	388.07	+ 0.00	+ 3.50
087 Other Glass Articles	0.1635	242.48	242.48	215.98	+ 0.00	+ 12.27
088 Ceramics & Sanitary Fixture	0.0244	244.89	244.86	228.90	+ 0.01	+ 6.99
089 Bricks, Blocks & Tiles	0.1566	226.63	226.33	207.72	+ 0.13	+ 9.10
090 Cement	1.8145	301.14	301.13	282.88	+ 0.00	+ 6.46
091 Bed Foam	0.0006	331.97	331.97	329.62	+ 0.00	+ 0.71
092 Matches	0.0505	3382.02	3375.83	3348.99	+ 0.18	+ 0.99
Metal Product, Machinery & Equipments	8.7156	408.65	403.22	388.38	+ 1.35	+ 5.22
093 Steel Bar & Sheets	1.4615	333.60	337.82	312.66	- 1.25	+ 6.70
094 Pipe Fittings	0.0780	511.20	511.20	505.35	+ 0.00	+ 1.16
095 Steel Products	0.3879	286.21	285.42	277.29	+ 0.28	+ 3.22
096 Engines & Motors	0.0046	242.26	242.26	216.19	+ 0.00	+ 12.06
097 Vacuum Pumps	0.0155	107.56	107.56	107.56	+ 0.00	+ 0.00
098 Air Conditioners	0.0049	310.77	310.77	309.58	+ 0.00	+ 0.38
099 Cultivators	0.0551	361.67	361.67	361.67	+ 0.00	+ 0.00
100 Chuff Cutter	0.1293	519.00	519.00	519.00	+ 0.00	+ 0.00
101 Tractors	0.0028	356.87	348.19	320.14	+ 2.49	+ 11.47
102 Lathe Machines	0.0525	548.09	544.70	535.99	+ 0.62	+ 2.26
103 Concrete Mixture	0.0107	462.05	456.13	445.73	+ 1.30	+ 3.66
104 Fridge,WashM,SewM,Fans,Iron	1.1645	318.83	316.69	309.33	+ 0.68	+ 3.07
105 Electric Wires	0.0912	411.02	403.73	367.13	+ 1.81	+ 11.95
106 Lighting Equipments	1.4431	757.41	757.41	757.41	+ 0.00	+ 0.00
107 Radio & Television	0.1843	192.13	191.49	190.54	+ 0.33	+ 0.83
108 Motor Vehicles	0.0244	271.56	271.56	268.12	+ 0.00	+ 1.28
109 Motorcycles	0.2570	271.57	271.57	263.76	+ 0.00	+ 2.96
110 Bicycles	3.3483	353.47	338.65	316.55	+ 4.38	+ 11.66
