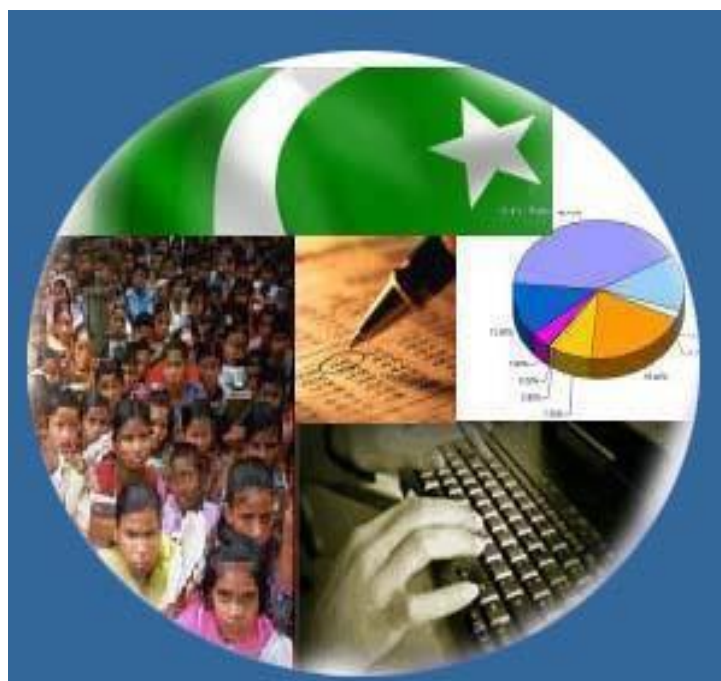




Monthly Review on Price Indices



June 2026
(Base Year 2015-16)

Government of Pakistan
Ministry of Planning, Development & Special Initiatives
Pakistan Bureau of Statistics
Islamabad

PRICE STATISTICS TEAM

S#	Name	Designation
1.	Dr. Naeem Uz Zafar (S.I)	Chief Statistician
2.	Syed Abdul Qader Shah	Director General
3.	Mr. Naseer Ahmad	Director
4.	Dr. Ahtasham Gul	Chief Statistical Officer
5.	Mr. Kashif Ali	Statistical Officer
6.	Miss. Umaira Zareen	Statistical Officer
7.	Mr. Abdul Qadir	Statistical Officer
8.	Mrs. Safia Akram	Statistical Officer
9.	Mrs. Faiza Razzaq	Statistical Officer
10.	Mr. Umer Farooq	Statistical Officer
11.	Mr. Ansar Mahmood	Statistical Assistant
12.	Mrs. Madiha Gulfraz	Statistical Assistant
13.	Mrs. Humail Fatima	Statistical Assistant

IT & SOFTWARE TEAM

1.	Mr. Muhammad Ehtesham	Director (DP)
2.	Mr. Arsalan Bashir	Chief System Analyst
3.	Mr. Muhammad Kibria	Data Processing Officer
4.	Mr. Irfan Bajwa	Data Processing Officer

Inflation in Brief

- CPI inflation General**, increased by 11.1% on year-on-year basis in June 2026 as compared to an increase of 11.7% in the previous month and 3.2% in June 2025. On month-on-month basis, it decreased by 0.3% in June 2026 as compared to an increase of 0.5% in the previous month and an increase of 0.2% in June 2025.
- CPI inflation Urban**, increased by 11.2% on year-on-year basis in June 2026 as compared to an increase of 11.8% in the previous month and an increase of 3.0% in June 2025. On month-on-month basis, it decreased by 0.5% in June 2026 as compared to an increase of 0.7% in the previous month and an increase of 0.1% in June 2025.
- CPI inflation Rural**, increased by 10.9% on year-on-year basis in June 2026 as compared to an increase of 11.5% in the previous month and an increase of 3.6% observed in June 2025. On month-on-month basis, no change observed in June 2026 as compared to an increase of 0.3% in the previous month and an increase of 0.5% in June 2025.
- SPI inflation** on YoY basis increased by 12.8% in June 2026 as compared to an increase of 12.0% in the previous month and a decrease of 1.9% in June 2025. On MoM basis, it remained stable at 0.7% in June 2026 as compared to the previous month and no change observed in June 2025.
- WPI inflation** on YoY basis increased by 10.7% in June 2026 as compared to an increase of 12.7% in the previous month and an increase of 0.6% in June 2025. On month-on-month basis, it decreased by 1.2% in June 2026 as compared to a decrease of 0.8% in the previous month and an increase of 0.6% in June 2025.
- Figures 1 and 2 show graphically the yearly data of Table 1.a for Urban and Rural CPI while Table 1.1 shows "Period Average" and "YoY" percentage changes in indices.

Table 1.a General Inflation (%) (Base 2015-16)																			
PERIOD	CPI														SPI*		WPI		
	General						Food				Non-Food								
	National		Urban		Rural		Urban		Rural		Urban		Rural		YoY	MoM	YoY	MoM	
	YoY	MoM	YoY	MoM	YoY	MoM	YoY	MoM	YoY	MoM	YoY	MoM	YoY	MoM					
Sep-24	6.9	-0.5	9.3	-0.5	3.6	-0.5	1.7	-0.8	-0.9	-1.0	15.0	-0.3	8.4	-0.1	9.2	0.2	1.9	-1.1	
Oct-24	7.2	1.2	9.3	1.1	4.2	1.5	2.7	1.6	0.6	2.2	14.2	0.7	8.0	0.8	9.7	0.6	3.9	0.0	
Nov-24	4.9	0.5	5.2	0.5	4.3	0.5	1.7	-0.2	-0.2	0.2	7.8	1.0	9.1	0.8	7.3	1.0	2.3	-0.1	
Dec-24	4.1	0.1	4.4	-0.1	3.6	0.3	2.5	0.1	-0.2	0.1	5.7	-0.2	7.6	0.5	4.2	0.8	1.9	-0.4	
Jan-25	2.4	0.2	2.7	0.2	1.9	0.2	-0.6	-0.3	-2.9	-0.4	5.0	0.5	7.0	0.9	0.7	-1.4	0.6	0.2	
Feb-25	1.5	-0.8	1.8	-0.7	1.1	-1.1	-0.9	-1.8	-4.3	-2.5	3.6	0.1	6.6	0.3	-0.2	-1.6	-0.7	-0.2	
Mar-25	0.7	0.9	1.2	0.8	0.0	1.1	-1.7	1.6	-5.4	1.6	3.1	0.2	5.6	0.5	-2.3	-0.1	-1.6	0.3	
Apr-25	0.3	-0.8	0.5	-0.7	-0.1	-1.0	-1.9	-1.6	-4.6	-1.8	2.2	-0.1	4.4	-0.4	-3.6	-2.1	-2.2	-1.3	
May-25	3.5	-0.2	3.5	0.1	3.4	-0.5	5.3	0.6	2.1	-1.0	2.4	-0.3	4.6	-0.1	-0.6	-1.0	0.4	0.0	
June-25	3.2	0.2	3.0	0.1	3.6	0.5	4.2	-0.6	2.4	0.1	2.2	0.5	4.7	0.8	-1.9	0.0	0.6	0.6	
July-25	4.1	2.9	4.4	3.4	3.5	2.2	2.2	2.4	1.5	2.7	5.9	4.1	5.4	1.6	-0.9	3.1	-0.5	1.2	
Aug-25	3.1	-0.6	3.5	-0.7	2.5	-0.5	-0.5	-1.3	-0.5	-0.7	6.1	-0.3	5.3	-0.3	2.6	3.2	-1.0	-0.2	
Sep-25	5.8	2.1	5.7	1.6	5.9	2.8	4.4	4.0	6.0	5.5	6.5	0.1	5.8	0.4	4.5	2.0	0.6	0.5	
Oct-25	6.2	1.7	6.0	1.4	6.6	2.1	4.5	1.7	6.8	3.0	7.0	1.1	6.4	1.3	4.8	0.9	1.1	0.5	
Nov-25	6.1	0.4	6.1	0.5	6.3	0.2	5.0	0.3	5.9	-0.7	6.7	0.7	6.7	1.0	4.2	0.4	1.1	-0.2	
Dec-25	5.6	-0.4	5.8	-0.4	5.4	-0.6	3.2	-1.7	3.8	-1.9	7.5	0.5	6.9	0.7	2.5	-0.8	0.6	-0.9	
Jan-26	5.8	0.4	5.8	0.2	5.8	0.6	3.3	-0.2	4.7	0.4	7.4	0.5	6.9	0.8	3.3	-0.8	0.2	-0.2	
Feb-26	7.0	0.3	6.8	0.3	7.3	0.3	4.4	-0.8	6.8	-0.5	8.3	0.9	7.7	1.0	4.8	-0.1	1.0	0.7	
Mar-26	7.3	1.2	7.4	1.3	7.2	1.0	2.9	0.1	4.5	-0.6	10.3	2.1	9.7	2.4	5.6	0.7	6.7	5.9	
Apr-26	10.9	2.5	11.1	2.7	10.6	2.1	6.9	2.3	7.3	0.9	13.8	3.0	13.6	3.2	10.1	2.0	13.6	5.1	
May-26	11.7	0.5	11.8	0.7	11.5	0.3	6.5	0.2	8.5	0.2	15.2	1.0	14.2	0.4	12.0	0.7	12.7	-0.8	
June-26	11.1	-0.3	11.2	-0.5	10.9	0.0	8.2	1.0	9.4	0.9	13.1	-1.4	12.3	-0.9	12.8	0.7	10.7	-1.2	

* SPI for quintile 1. Digits 0.0* are due to rounding off.

7. Measured by **non-food non-energy Urban** increased by 8.7% on (YoY) basis in June 2026 as compared to an increase of 9.0% in the previous month and an increase of 6.9% in June 2025. On (MoM) basis, it decreased by 0.1% in June 2026 as compared to 1.3% in the previous month and an increase of 0.2% in the corresponding month of last year i.e. June 2025.
8. Measured by **non-food non-energy Rural** increased by 7.9% on (YoY) basis in June 2026 as compared to an increase of 8.4% in the previous month and an increase of 8.6% in June 2025. On (MoM) basis, it remained stable at 0.2% in June 2026 as compared to the previous month and an increase of 0.7% in the corresponding month of last year i.e. June 2025.

Core inflation (Trimmed)

9. Measured by 20% **weighted trimmed mean Urban** increased by 9.6% on (YoY) basis in June 2026 as compared to an increase of 9.8% in the previous month and 4.7% in June 2025. On (MoM) basis, it increased by 0.3% in June 2026 as compared to an increase of 0.6% a month earlier and an increase of 0.3% in the corresponding month of last year i.e. June 2025.
10. Measured by 20% **weighted trimmed mean Rural** increased by 9.3% on (YoY) basis in June 2026 as compared to an increase of 9.6% in the previous month and 5.2% in June 2025. On (MoM) basis, it increased by 0.5% in June 2026 as compared to an increase of 0.8% in the previous month and an increase of 0.5% in the corresponding month of last year i.e. June 2025.

Table 1.b Core Inflation (%) (Base 2015-16)

Period	NFNE				Trimmed			
	Urban		Rural		Urban		Rural	
	YoY	MoM	YoY	MoM	YoY	MoM	YoY	MoM
June-25	6.9	0.2	8.6	0.7	4.7	0.3	5.2	0.5
July-25	7.0	0.8	8.1	0.7	5.1	1.0	4.9	0.7
Aug-25	6.9	0.3	7.8	0.2	4.2	0.0	3.5	0.3
Sep-25	7.0	0.3	7.8	0.6	5.7	0.3	6.5	0.7
Oct-25	7.5	1.1	8.4	1.3	6.0	0.9	6.8	1.2
Nov-25	6.6	0.3	8.2	0.5	5.3	0.3	6.4	0.4
Dec-25	6.9	0.5	8.1	0.6	5.5	0.3	6.0	0.4
Jan-26	7.2	1.0	8.3	1.1	4.9	0.5	5.4	0.7
Feb-26	7.1	0.2	8.3	0.4	5.1	0.2	5.6	0.3
Mar-26	7.4	0.7	8.4	0.8	5.9	0.6	6.3	0.5
Apr-26	8.0	1.9	8.5	1.1	9.2	1.1	8.9	1.0
May-26	9.0	1.3	8.4	0.2	9.8	0.6	9.6	0.8
June-26	8.7	-0.1	7.9	0.2	9.6	0.3	9.3	0.5

Table 1.1 Period Average and Y-o-Y % Change

INDEX	Average July - June % Changes			June over June % Changes		
	2025-2026	2024-2025	2023-2024	2025-2026	2024-2025	2023-2024
CPI (National)	7.05	4.49	23.41	11.07	3.23	12.57
CPI (Urban)	7.12	5.31	24.12	11.17	3.00	14.89
CPI (Rural)	6.95	3.32	22.41	10.92	3.58	9.31
SPI	5.46	3.81	27.52	12.82	-1.91	16.63
WPI	3.86	1.89	20.16	10.69	0.58	10.62

Figure 1: Urban Inflation - YoY, Special Indices

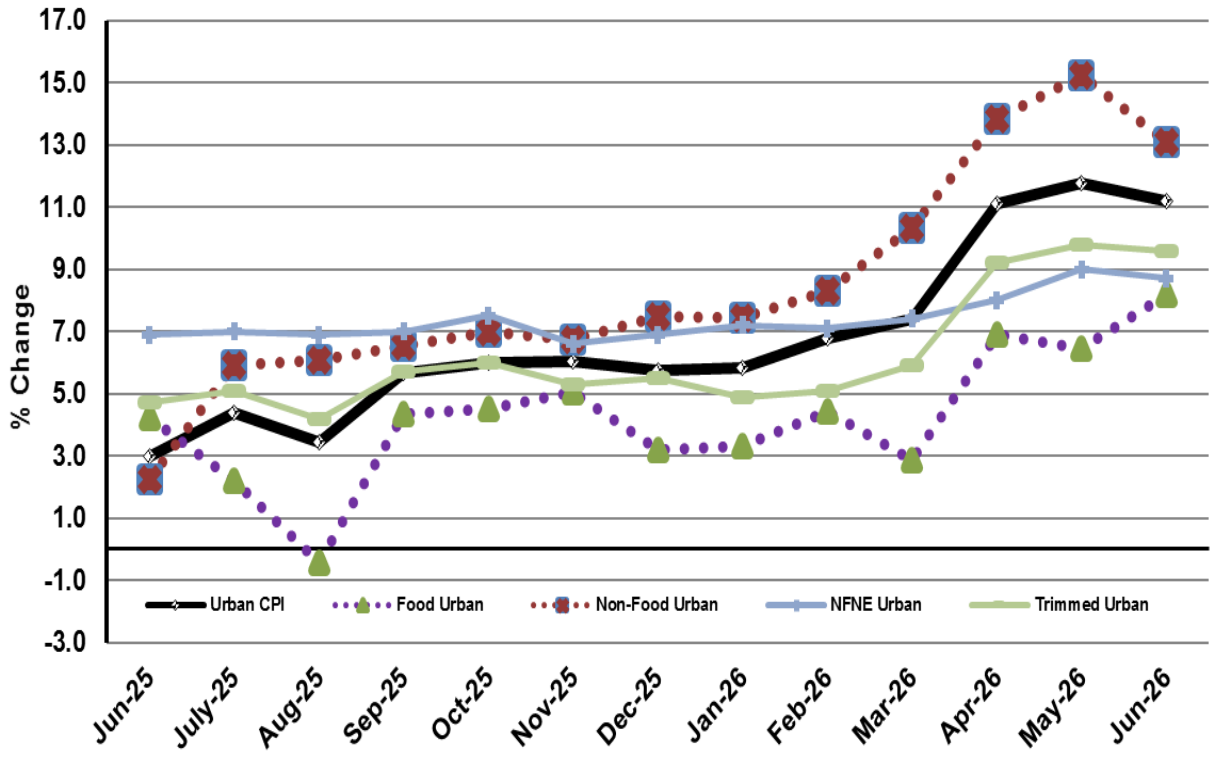
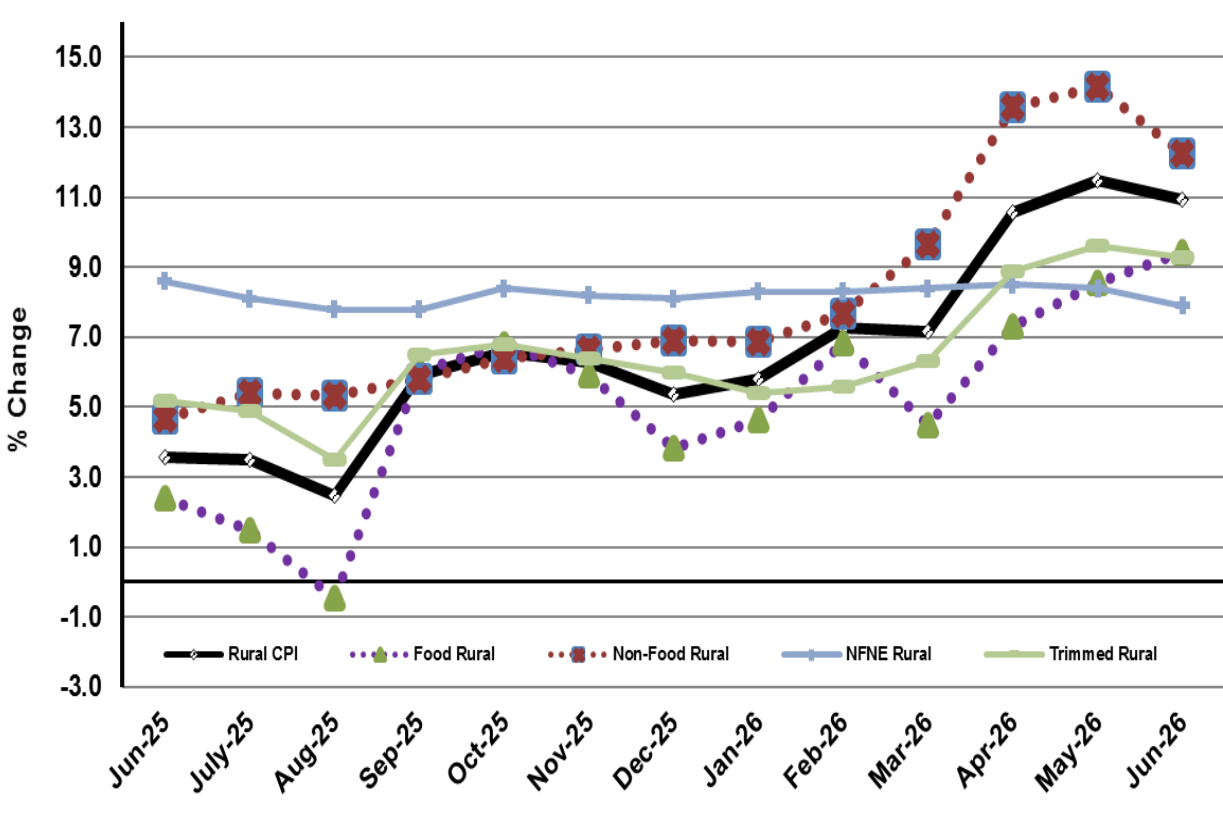


Figure 2: Rural Inflation - YoY, Special Indices



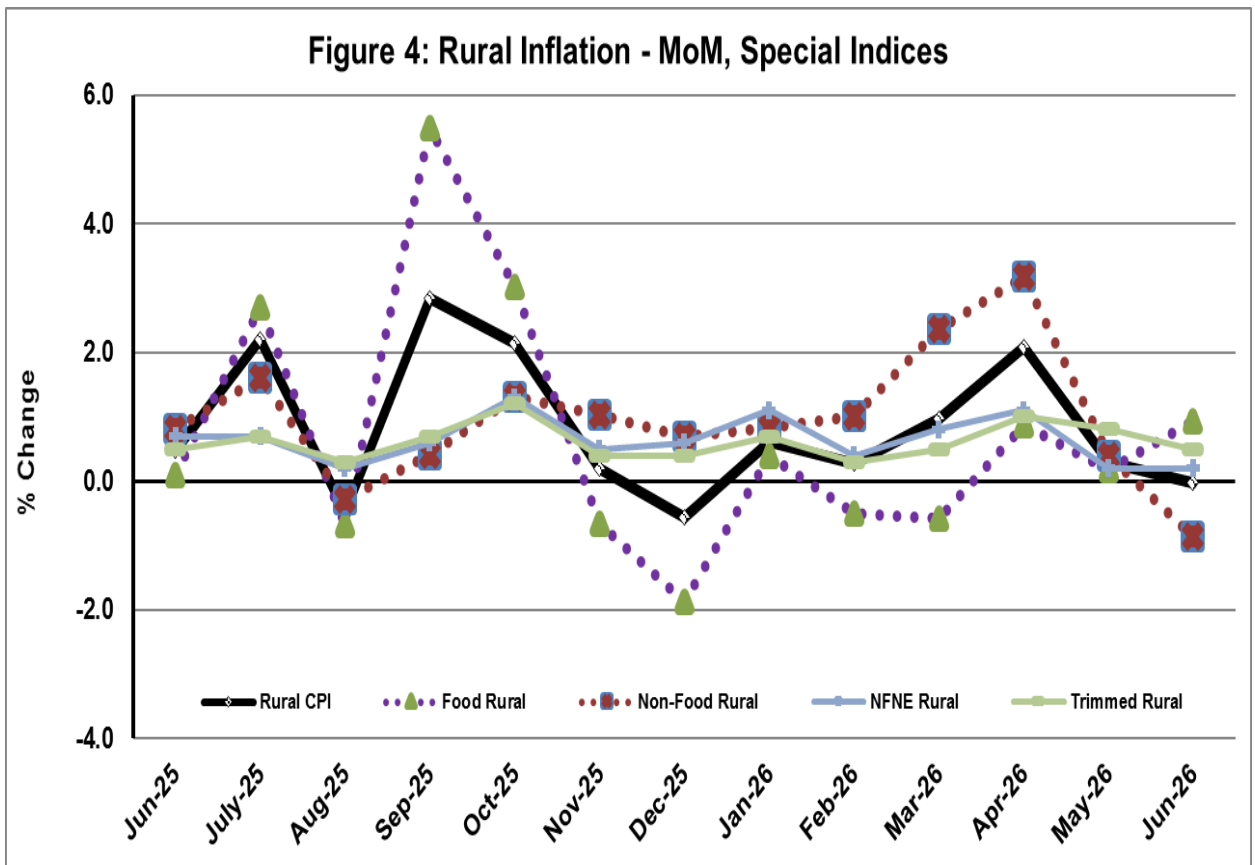
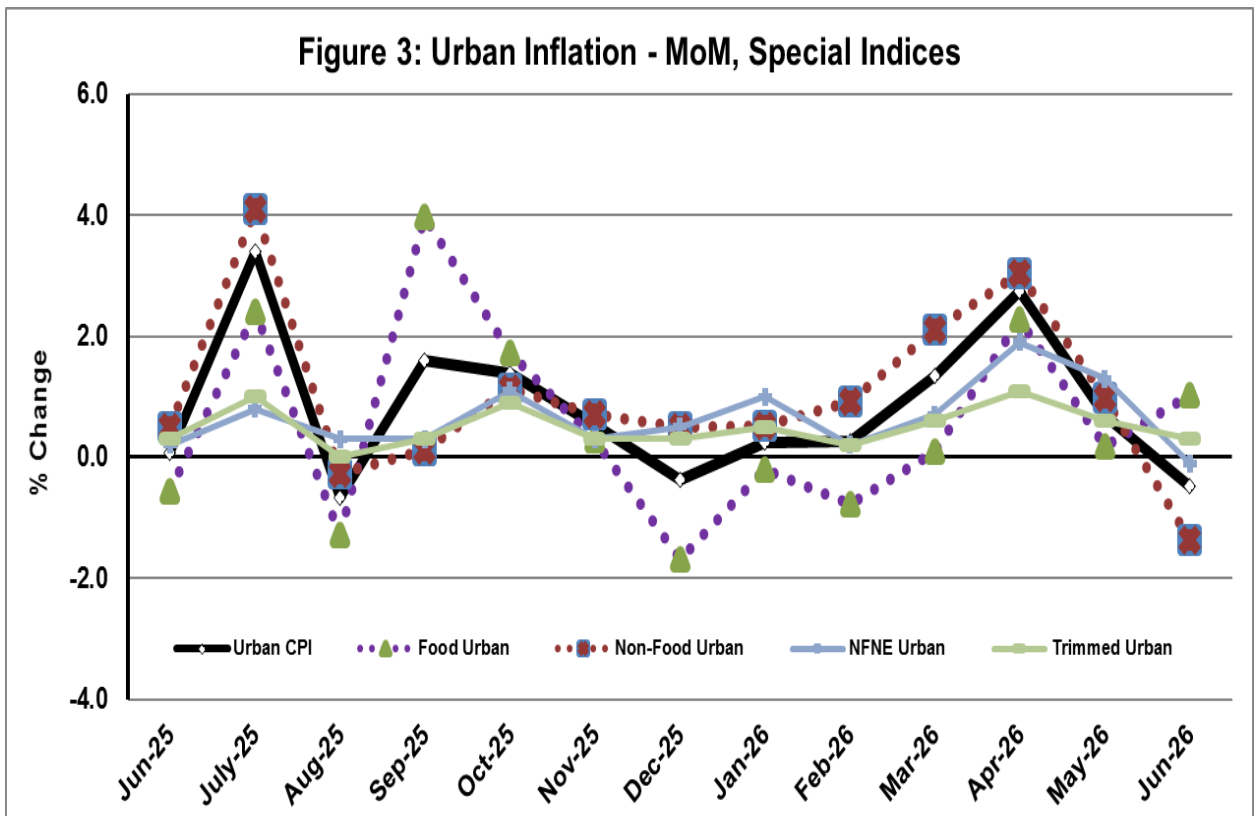


Figure 5: CPI YoY (National, Urban, Rural)

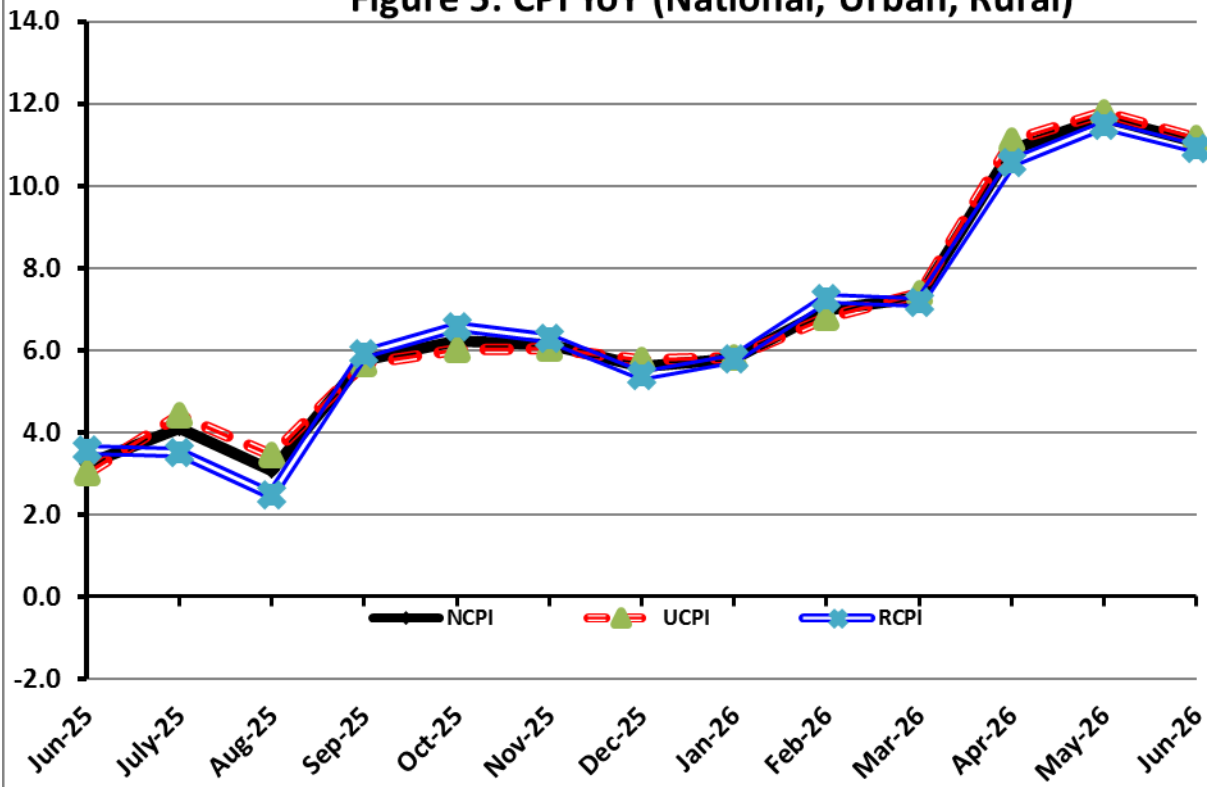
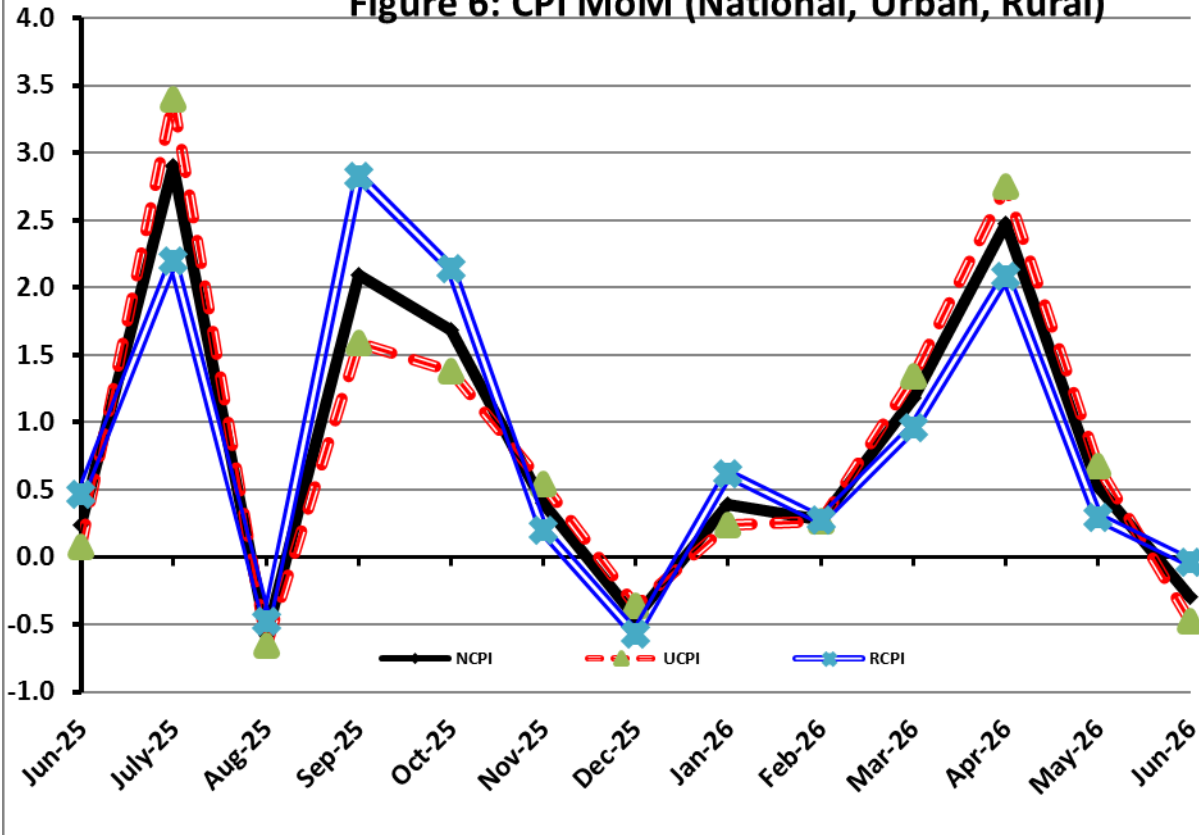


Figure 6: CPI MoM (National, Urban, Rural)



I. National Consumer Price Index (NCPI)

The **National Consumer Price Index** for **June 2026** is decreased by **0.30%** over **May 2026** and increased by **11.07%** over corresponding month of the last year i.e. **June 2025**.

Table 1: Consumer Price Index (National) by Group of Commodities and Services (Base 2015-16)

No	Group	Group Weight (%)	Indices			% Change June 2026 Over		Impact (In % points) June 2026 Over	
			June 26	May 26	June 25	May 26	June 25	May 26	June 25
	General	100.00	293.47	294.34	264.22	-0.30	11.07	-0.30	11.07
1.	Food & Non-alcoholic Bev.	34.58	296.52	293.71	271.10	0.96	9.38	0.33	3.33
	<i>Non-perishable Food Items</i>	29.60	304.85	306.16	276.60	-0.43	10.21	-0.13	3.16
	<i>Perishable Food Items</i>	4.99	247.07	219.77	238.50	12.42	3.59	0.46	0.16
2.	Alcoholic Bev. & Tobacco	1.02	409.87	404.40	396.72	1.35	3.32	0.02	0.05
3.	Clothing & Footwear	8.60	287.79	285.62	263.31	0.76	9.30	0.06	0.80
4.	Housing, Water, Electricity, Gas & Fuels	23.63	268.29	269.35	232.28	-0.40	15.50	-0.09	3.22
5.	Furnishing & Household Equipment Maintenance	4.10	294.74	292.07	278.22	0.92	5.94	0.04	0.26
6.	Health	2.79	295.11	292.41	274.28	0.92	7.59	0.03	0.22
7.	Transport	5.91	389.87	420.19	310.10	-7.22	25.72	-0.61	1.78
8.	Communication	2.21	136.33	136.30	135.17	0.03	0.86	0.00	0.01
9.	Recreation & Culture	1.59	266.43	265.12	266.19	0.49	0.09	0.01	0.00
10.	Education	3.79	237.91	237.43	219.68	0.20	8.30	0.01	0.26
11.	Restaurants & Hotels	6.92	304.41	303.29	288.86	0.37	5.38	0.03	0.41
12.	Miscellaneous	4.87	368.52	375.50	328.43	-1.86	12.21	-0.12	0.74

II. Urban Consumer Price Index (UCPI)

The Urban Consumer Price Index for **June 2026** is decreased by **0.47%** over **May 2026** and increased by **11.17%** over corresponding month of the last year i.e. **June 2025**.

Table 2: Consumer Price Index (Urban) by Group of Commodities and Services (Base 2015-16)

No	Group	Group Weight (%)	Indices			% Change June 2026 Over		Impact (In % points) June 2026 Over	
			June 26	May 26	June 25	May 26	June 25	May 26	June 25
	General	100.00	290.20	291.58	261.04	-0.47	11.17	-0.47	11.17
1.	Food & Non-alcoholic Bev.	30.42	294.92	291.88	271.30	1.04	8.71	0.32	2.75
	<i>Non-perishable Food Items</i>	25.97	302.53	303.54	276.18	-0.33	9.54	-0.09	2.62
	<i>Perishable Food Items</i>	4.46	250.57	223.94	242.90	11.89	3.16	0.41	0.13
2.	Alcoholic Bev. & Tobacco	0.85	434.78	427.73	418.82	1.65	3.81	0.02	0.05
3.	Clothing & Footwear	8.01	283.12	280.55	254.64	0.92	11.18	0.07	0.87
4.	Housing, Water, Electricity, Gas & Fuels	27.03	272.81	274.66	238.20	-0.67	14.53	-0.17	3.58
5.	Furnishing & Household Equip. & Maintenance	4.09	283.93	280.81	267.58	1.11	6.11	0.04	0.26
6.	Health	2.31	294.30	292.40	276.26	0.65	6.53	0.01	0.16
7.	Transport	6.14	390.16	420.75	304.52	-7.27	28.12	-0.64	2.01
8.	Communication	2.35	139.81	139.76	138.60	0.04	0.87	0.00	0.01
9.	Recreation & Culture	1.73	252.10	250.24	250.36	0.74	0.69	0.01	0.01
10.	Education	4.88	229.95	229.64	212.44	0.13	8.24	0.01	0.33
11.	Restaurants & Hotels	7.41	298.29	299.09	283.57	-0.27	5.19	-0.02	0.42
12.	Miscellaneous	4.77	356.59	363.87	317.53	-2.00	12.30	-0.12	0.71

Main contributors to month-on-month and year-on-year percentage changes are given below and detail is given in **Annexure-A**.

MONTH-ON-MONTH: Top few commodities which varied from previous month i.e. **May, 2026** are given below:

FOOD

Increased: Tomatoes (90.10%), Onions (20.80%), Potatoes (17.76%), Fresh Vegetables (12.55%), Wheat Flour (2.17%), Wheat Products (2.12%), Vegetable Ghee (1.85%), Wheat (1.72%), Cooking Oil (1.53%) and Milk Fresh (1.27%).

Decreased: Chicken (22.44%), Eggs (10.74%), Pulse Moong (1.04%), Pulse Mash (0.98%), Beans (0.89%), Besan (0.64%), Pulse Gram (0.38%), Fish (0.37%) and Pulse Masoor (0.20%).

NON-FOOD:

Increased: Newspapers (14.84%), Dopatta (3.78%), Washing Soap/Detergents/Match Box (1.96%), Liquefied Hydrocarbons (1.79%), Tailoring (1.74%), Major Tools & Equipments (1.66%), Cotton Cloth (1.60%), Medical Tests (1.48%), Doctor (MBBS) Clinic Fee (1.47%) and Furniture & Furnishing (1.21%).

Decreased: Motor Fuel (12.06%), Personal Effects (6.19%), Electricity Charges (4.31%), Marriage Hall Charges (4.04%), Transport Services (0.56%), Household Textiles (0.15%) and Solid Fuel (0.03%).

YEAR-ON-YEAR: Top few commodities, which varied from corresponding month of previous year i.e. **June 2025**, are given below:

FOOD:

Increased: Wheat (64.69%), Onions (60.08%), Wheat Flour (55.34%), Tomatoes (52.01%), Wheat Products (16.72%), Meat (14.52%), Butter (13.91%), Dessert Preparation (13.62%), Bakery and Confectionary (9.39%), Dry Fruits (9.33%), Milk Products (8.53%), Fresh Vegetables (7.77%) and Milk Fresh (7.58%).

Decreased: Potatoes (40.06%), Eggs (33.18%), Pulse Gram (19.19%), Besan (17.28%), Sugar (15.84%), Gram Whole (14.47%), Pulse Masoor (12.12%), Beans (7.65%), Chicken (5.74%), Pulse Moong (4.53%) and Gur (0.71%).

NON-FOOD:

Increased: Liquefied Hydrocarbons (60.55%), Transport Services (39.66%), Postal Services (34.70%), Motor Fuel (32.09%), Footware (29.32%), Newspapers (28.54%), Electricity Charges (23.76%) and Gas Charges (22.91%).

Decreased: Text Books (2.68%).

III. Rural Consumer Price Index (RCPI)

The Rural Consumer Price Index for June 2026 is decreased by 0.03% over May 2026 and increased by 10.92% over corresponding month of the last year i.e. June 2025.

Table 3: Consumer Price Index (Rural) by Group of Commodities and Services (Base 2015-16)

No	Group	Group Weight (%)	Indices			% Change June 2026 Over		Impact (In % points) June 2026 Over	
			June 26	May 26	June 25	May 26	June 25	May 26	June 25
	General	100.00	298.41	298.51	269.02	-0.03	10.92	-0.03	10.92
1.	Food & Non-alcoholic Bev.	40.87	298.32	295.76	270.88	0.87	10.13	0.35	4.17
	<i>Non-perishable Food Items</i>	<i>35.08</i>	<i>307.44</i>	<i>309.09</i>	<i>277.07</i>	<i>-0.53</i>	<i>10.96</i>	<i>-0.19</i>	<i>3.96</i>
	<i>Perishable Food Items</i>	<i>5.79</i>	<i>243.01</i>	<i>214.92</i>	<i>233.39</i>	<i>13.07</i>	<i>4.12</i>	<i>0.54</i>	<i>0.21</i>
2.	Alcoholic Bev. & Tobacco	1.28	384.76	380.88	374.43	1.02	2.76	0.02	0.05
3.	Clothing & Footwear	9.48	293.75	292.09	274.36	0.57	7.07	0.05	0.68
4.	Housing, Water, Electricity, Gas & Fuels	18.49	258.31	257.64	219.20	0.26	17.84	0.04	2.69
5.	Furnishing & Household Equip. & Maintenance	4.10	311.02	309.02	294.24	0.65	5.70	0.03	0.26
6.	Health	3.51	295.91	292.42	272.32	1.19	8.66	0.04	0.31
7.	Transport	5.56	389.39	419.27	319.40	-7.13	21.91	-0.56	1.45
8.	Communication	1.99	130.14	130.13	129.06	0.01	0.84	0.00	0.01
9.	Recreation & Culture	1.38	293.61	293.35	296.23	0.09	-0.88	0.00	-0.01
10.	Education	2.13	265.38	264.31	244.66	0.40	8.47	0.01	0.16
11.	Restaurants & Hotels	6.19	315.46	310.88	298.42	1.47	5.71	0.09	0.39
12.	Miscellaneous	5.02	385.65	392.19	344.07	-1.67	12.08	-0.11	0.78

Main contributors to month-on-month and year-on-year percentage changes are given below and detail is given in **Annexure-B**.

MONTH-ON-MONTH Top few commodities which varied from previous month i.e. May, 2026 are given below:

FOOD

Increased: Tomatoes (90.24%), Potatoes (36.53%), Onions (22.26%), Fresh Vegetables (9.70%), Readymade Food (1.49%), Wheat (1.11%), Honey (1.01%), Wheat Flour (0.90%), Milk Products (0.83%), Sweetmeat (0.70%), Milk Fresh (0.68%), Sugar (0.61%) and Vegetable Ghee (0.57%).

Decreased: Chicken (20.97%), Eggs (11.55%), Pulse Gram (2.46%), Besan (2.38%), Pulse Mash (1.83%), Pulse Masoor (1.59%), Fresh Fruits (1.48%), Pulse Moong (1.41%) and Gram Whole (1.05%).

NON-FOOD

Increased: Newspapers (14.29%), Liquified Hydrocarbons (8.65%), Dopatta (4.04%), Doctor Clinic Fee (2.34%), Medical Tests (2.22%), Hospitals Services (2.01% and Construction Wage Rates (1.82%).

Decreased: Motor Fuels (12.72%), Personal Effects (4.96%), Electricity Charges (4.31%), Text Books (0.44%) and Construction Input Items (0.14%).

Year-On-Year: Top few commodities which varied from corresponding month of previous year i.e. June, 2025 are given below:

FOOD

Increased: Onions (83.59%), Tomatoes (63.36%), Wheat (62.51%), Wheat Flour (61.41%), Wheat Products (15.13%), Dessert Preparation (11.62%), Fresh Vegetables (10.67%), Butter (10.35%), Ice Cream (10.02%) and Meat (10.02%).

Decreased: Potatoes (40.52%), Eggs (33.67%), Pulse Gram (21.08%), Besan (17.51%), Gram Whole (16.57%), Sugar (15.34%), Pulse Masoor (11.18%), Chicken (8.68%), Pulse Moong (4.58%), Beans (3.78%), Condiments and Spices (3.33%), Pulse Mash (3.06%), Tea (1.71%) and Fresh Fruits (0.67%).

Non-Food

Increased: Liquified Hydrocarbons (63.97%), Motor Fuels (34.29%), Newspapers (33.33%), Electricity Charges (23.76%), Personal Effects (20.74%), Doctor Clinic Fee (16.44%), Solid Fuel (16.41%) and Construction Input Items (15.31%).

Decreased: Text Books (5.24%).

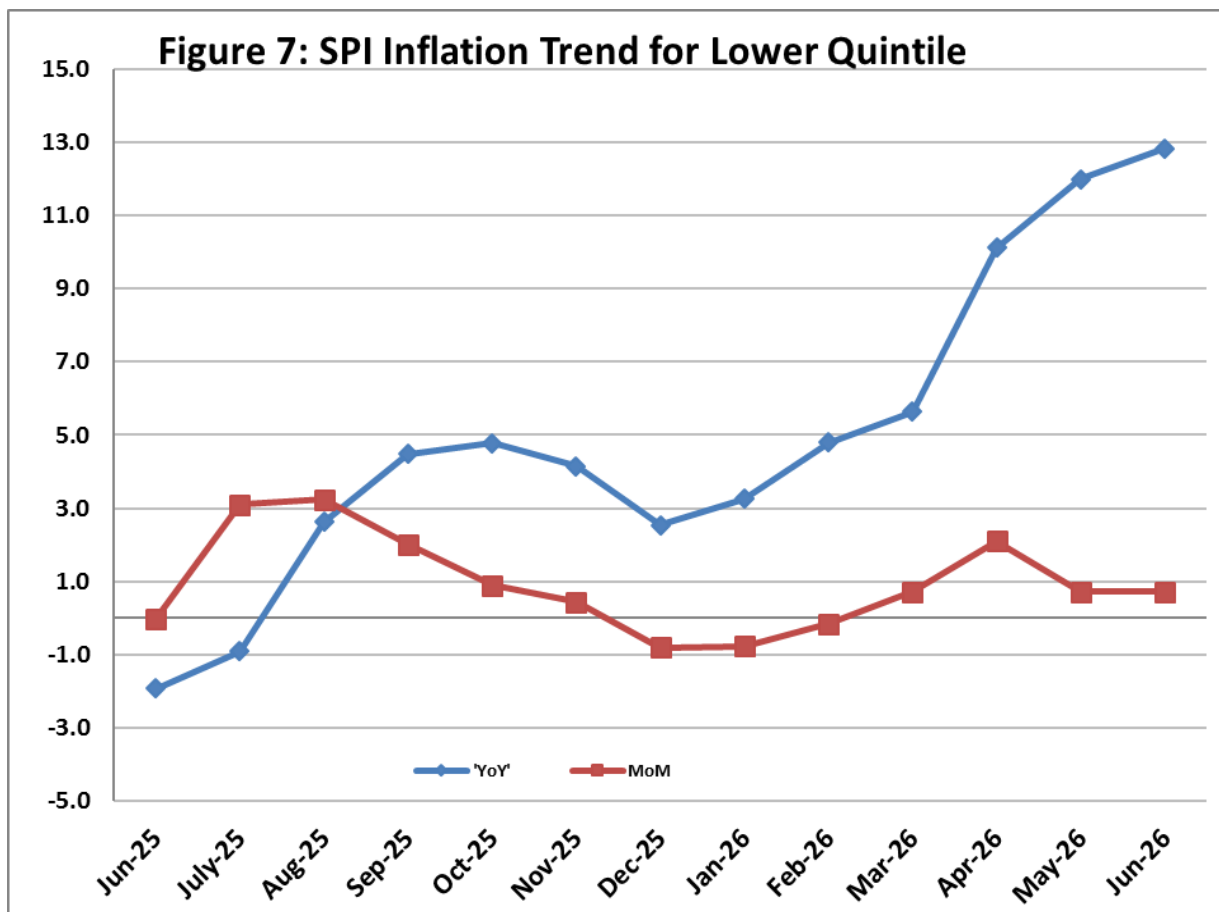
IV. Sensitive Price Indicator (SPI)

Quintile-wise percentage changes YoY and MoM are given below in Table 4. The series from June 2025 to June 2026 is also graphed below in Figure 7.

Table 4: Sensitive Price Indicator (Base 2015-16)					
Quintiles	Indices			% Change May 2026 Over	
	June 2026	May 2026	June 2025	May 2026	June 2025
1	337.64	335.21	299.26	0.72	12.82
2	340.98	340.06	295.13	0.27	15.54
3	363.34	362.88	319.71	0.13	13.65
4	352.02	352.42	310.45	-0.11	13.39
5	357.73	360.23	312.79	-0.69	14.37
Combined	356.37	357.70	309.78	-0.37	15.04

Table 4.1: Weekly Percentage Change of SPI During June 2026				
Quintiles	% Change over Previous week			
	04-06-2026	11-06-2026	18-06-2026	25-06-2026
Quintile 1	0.32	0.19	0.64	-
Combined	-0.56	0.16	0.46	-

* The SPI for the week ended on 25-06-2026 was postponed due to Ashura holidays.



V. Wholesale Price Index

The Wholesale Price Index for **June 2026** decreased by **1.21%** over **May 2026** and increased by **10.69%** over the corresponding month of the last year i.e. **June, 2025**. YoY and MoM movements from June, 2025 to June, 2026 are also graphed below in Figure 8.

Table 5: Wholesale Price Index by Group of Commodities (Base 2015-16)

No	Group	Group Weight (%)	Indices			% Change June 2026 Over		Impact (In % points) June 2026 Over	
			June 26	May 26	June 25	May 26	June 25	May 26	June 25
	General	100.00	343.85	348.07	310.63	-1.21	10.69	-1.21	10.69
1	Agriculture Forestry & Fishery	25.77	281.16	278.55	276.18	0.94	1.80	0.19	0.41
2	Ores/Minerals, Elec., Gas & Water	12.01	361.09	366.27	341.65	-1.41	5.69	-0.18	0.75
3	Food, Beverages, Tobacco, Textiles & Leather Products	31.11	302.88	300.62	282.70	0.75	7.14	0.20	2.02
	i. Food Products, Beverages & Tobacco	20.07	326.17	324.08	299.23	0.64	9.00	0.12	1.74
	ii. Textiles & Apparels	10.33	263.81	261.46	257.75	0.90	2.35	0.07	0.20
	iii. Leather Products	0.71	212.86	207.33	178.56	2.67	19.21	0.01	0.08
4	Other Transportable Goods	22.40	437.28	460.64	341.74	-5.07	27.96	-1.50	6.89
5	Metal Product, Machinery & Equipment	8.72	411.58	408.65	389.51	0.72	5.67	0.07	0.62

Main contributors to month-on-month and year-on-year percentage changes are given below and detail is given in **Annexure-C**.

MONTH-ON-MONTH: Top few commodities which varied from previous month are given below:

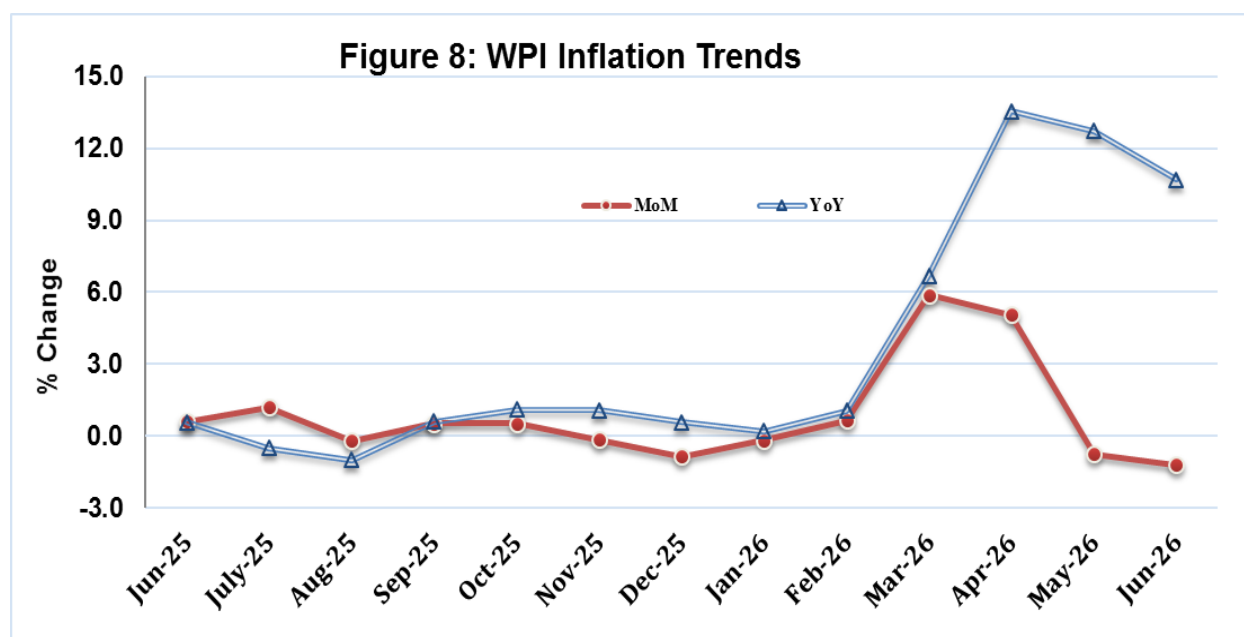
Increased: Vegetables (30.53%), Edible Roots / Potatoes (22.93%), Other Leather (10.87%), Woven Fabrics (8.42%), Medicines (8.07%), Oil Cakes (5.95%), Other Fabrics (5.89%), Hides, Skins & Fur Skins, Raw (5.25%), Mobil Oil (4.57%), Electric Wires (4.35%) and Fertilizers (4.22%).

Decreased: Poultry (23.44%), Kerosene Oil (19.87%), Diesel Oil (15.06%), Motor Spirit (14.17%), Eggs (12.02%), Coal not Agglomerated (6.57%), Maize (6.50%), Sorghum / Jowar (5.09%), Electrical Energy (3.24%), Millet / Bajra (2.89%) and Auto Tyres (2.82%).

YEAR-ON-YEAR: Top few commodities which varied from previous year are given below:

Increased: Sorghum / Jowar (81.82%), Wheat (66.73%), Wheat Flour (58.01%), Kerosene Oil (55.27%), Footwears (51.86%), Diesel Oil (43.26%), Furnace Oil (40.67%), Motor Spirit (37.32%), Woven Fabrics (25.51%), Dried Fruits & Nuts (24.56%), Vegetables (23.58%) and Dyeing Material (22.99%).

Decreased: Edible Roots / Potatoes (51.69%), Eggs (33.61%), Stimulant & Spice Crops (33.29%), Other Cereal Flour (22.52%), Sugar Refined (16.19%), Pulses (16.08%), Millet / Bajra (15.53%), Cotton Seeds (6.81%), Fibre Crops (6.34%), Poultry (4.62%), Sugar Crops (3.52%), Dry Fruits (2.65%) and Timber (1.74%).



Annexure A: CPI (Urban) Index Numbers by Commodity Groups & Commodities (2015-16=100)

Item and Specification	Weight	Index Numbers			% Change in Jun 2026 over		
		Jun 26	May 26	Jun 25	May 2026	Jun 2025	
General	100.0000	290.20	291.58	261.04	-	0.47	+ 11.17
Food and non-alcoholic Beverages	30.4215	294.92	291.88	271.30	+	1.04	+ 8.71
01 Wheat	0.6120	312.71	307.41	189.88	+	1.72	+ <u>64.69</u>
02 Wheat flour	3.0075	308.22	301.66	198.41	+	2.17	+ <u>55.34</u>
03 Wheat products	0.0936	312.09	305.61	267.39	+	2.12	+ 16.72
04 Besan	0.0830	211.13	212.49	255.22	-	0.64	- 17.28
05 Rice	1.1804	335.13	332.93	314.81	+	0.66	+ 6.45
06 Bakery and confectionary	0.4770	294.18	293.56	268.92	+	0.21	+ 9.39
07 Nimco	0.1224	312.48	307.54	300.39	+	1.61	+ 4.02
08 Meat	2.0411	392.09	389.80	342.39	+	0.59	+ 14.52
09 Chicken	1.3631	215.89	278.35	229.03	-	22.44	- 5.74
10 Fish	0.3855	225.10	225.94	208.00	-	0.37	+ 8.22
11 Milk fresh	7.1070	284.75	281.17	264.68	+	1.27	+ 7.58
12 Milk products	0.6407	289.69	286.91	266.92	+	0.97	+ 8.53
13 Milk powder	0.3106	334.90	334.44	314.48	+	0.14	+ 6.49
14 Eggs	0.5083	240.58	269.54	360.03	-	10.74	- 33.18
15 Butter	0.0932	505.91	503.61	444.13	+	0.46	+ 13.91
16 Mustard oil	0.0120	318.80	318.42	308.44	+	0.12	+ 3.36
17 Cooking oil	1.1016	345.74	340.53	327.17	+	1.53	+ 5.68
18 Vegetable ghee	1.0324	366.62	359.95	343.73	+	1.85	+ 6.66
19 Dry fruits	0.3299	326.20	324.98	298.35	+	0.38	+ 9.33
20 Fresh fruits	1.4363	306.99	305.27	298.56	+	0.56	+ 2.82
21 Pulse masoor	0.1624	176.65	177.01	201.02	-	0.20	- 12.12
22 Pulse moong	0.1697	235.59	238.07	246.76	-	1.04	- 4.53
23 Pulse mash	0.1152	198.26	200.23	190.56	-	0.98	+ 4.04
24 Pulse gram	0.1660	204.21	204.99	252.71	-	0.38	- 19.19
25 Gram whole	0.0912	236.82	236.51	276.90	+	0.13	- 14.47
26 Beans	0.0408	342.59	345.68	370.98	-	0.89	- 7.65
27 Potatoes	0.4496	191.90	162.96	320.18	+	17.76	- 40.06
28 Onions	0.5928	205.70	170.28	128.50	+	20.80	+ <u>60.08</u>
29 Tomatoes	0.3459	260.51	137.04	171.38	+	<u>90.10</u>	+ <u>52.01</u>
30 Fresh vegetables	1.5306	230.51	204.80	213.89	+	12.55	+ 7.77
31 Sugar	1.1130	240.13	240.07	285.31	+	0.02	+ 15.84
32 Gur	0.0379	260.30	260.04	262.16	+	0.10	- 0.71
33 Honey	0.1017	222.63	222.37	222.27	+	0.12	+ 0.16
34 Sweetmeat	0.3535	350.07	349.64	329.34	+	0.12	+ 6.29
35 Ice cream	0.1044	223.63	222.04	199.45	+	0.72	+ 12.12
36 Condiments and Spices	1.3340	384.39	383.44	373.41	+	0.25	+ 2.94
37 Dessert preparation	0.0419	312.68	307.25	275.21	+	1.77	+ 13.62
38 Tea	0.8427	273.67	273.67	273.67	+	0.00	+ 0.00
39 Beverages	0.8906	270.95	270.07	261.46	+	0.33	+ 3.63
Alcoholic Beverages, Tobacco	0.8540	434.78	427.73	418.82	+	1.65	+ 3.81
40 Cigarettes	0.7167	422.91	415.90	410.28	+	1.69	+ 3.08
41 Pan prepared	0.1373	496.75	489.47	463.42	+	1.49	+ 7.19
Clothing and footwear	8.0096	283.12	280.55	254.64	+	0.92	+ 11.18
42 Cotton cloth	2.2227	315.05	310.08	297.99	+	1.60	+ 5.73
43 Woollen cloth	0.8361	267.09	265.04	243.05	+	0.77	+ 9.89
44 Readymade garments	1.3196	233.31	232.21	221.11	+	0.47	+ 5.52
45 Woollen readymade garments	0.4307	273.87	273.83	256.71	+	0.01	+ 6.68
46 Tailoring	1.0741	265.69	261.15	237.09	+	1.74	+ 12.06
47 Hosiery	0.4070	248.58	248.47	239.06	+	0.04	+ 3.98
48 Dupatta	0.1713	219.74	211.74	205.11	+	3.78	+ 7.13
49 Cleaning and laundering	0.0665	297.48	297.37	268.63	+	0.04	+ 10.74
50 Footware	1.4816	320.10	320.07	247.52	+	0.01	+ 29.32
Housing, water, Elec., Gas and Other Fuels	27.0332	272.81	274.66	238.20	-	0.67	+ 14.53
51 House rent	19.2558	180.88	180.88	170.49	+	0.00	+ 6.09
52 Construction input items	0.3765	283.40	280.79	266.09	+	0.93	+ 6.51
53 Construction wage rates	0.2025	247.79	245.48	227.48	+	0.94	+ 8.93
54 Water supply	0.5269	248.17	247.62	228.99	+	0.22	+ 8.38
55 Garbage collection	0.1064	275.69	275.69	262.68	+	0.00	+ 4.95
56 Electricity charges	4.5562	274.06	286.39	221.44	-	4.31	+ 23.76
57 Gas charges	1.0807	1817.96	1817.96	1479.08	+	0.00	+ 22.91
58 Liquefied Hydrocarbons	0.5064	505.18	496.32	314.65	+	1.79	+ <u>60.55</u>

Annexure A: CPI (Urban) Index Numbers by Commodity Groups & Commodities (2015-16=100)

Item and Specification	Weight	Index Numbers			% Change in Jun 2026 over	
		Jun 26	May 26	Jun 25	May 2026	Jun 2025
59 Solid Fuel	0.4218	250.66	250.74	224.63	- 0.03	+ 11.59
<i>Furnishing and household equipment</i>	4.0937	283.93	280.81	267.58	+ 1.11	+ 6.11
60 Furniture and furnishing	0.4750	275.02	271.74	260.45	+ 1.21	+ 5.59
61 Carpets	0.0308	159.33	159.35	154.05	- 0.01	+ 3.43
62 Household textiles	0.3420	216.76	217.08	210.10	- 0.15	+ 3.17
63 Household equipments	1.0032	289.08	288.41	271.99	+ 0.23	+ 6.28
64 Plastic products	0.0536	246.44	245.08	225.11	+ 0.55	+ 9.48
65 Major tools & equipments	0.0084	283.18	278.56	250.40	+ 1.66	+ 13.09
66 Washing soap/detergents/match	1.4112	340.91	334.37	321.86	+ 1.96	+ 5.92
67 Household servant	0.7695	215.67	214.00	199.94	+ 0.78	+ 7.87
<i>Health</i>	2.3098	294.30	292.40	276.26	+ 0.65	+ 6.53
68 Drugs and medicines	1.0735	313.39	312.94	297.55	+ 0.14	+ 5.32
69 Therapeutic Appliances and Equipments	0.0054	158.14	157.61	155.58	+ 0.34	+ 1.65
70 Doctor (MBBS) clinic fee	0.4044	377.23	371.76	346.49	+ 1.47	+ 8.87
71 Dental services	0.0156	242.43	240.43	228.94	+ 0.83	+ 5.89
72 Medical tests	0.2367	234.32	230.90	214.98	+ 1.48	+ 9.00
73 Hospitals services	0.5742	227.61	226.15	214.68	+ 0.65	+ 6.02
<i>Transport</i>	6.1368	390.16	420.75	304.52	- 7.27	+ 28.12
74 Motor vehicles	0.8097	267.72	267.70	264.37	+ 0.01	+ 1.27
75 Motor vehicle accessories	0.1941	274.46	274.40	264.26	+ 0.02	+ 3.86
76 Motor fuel	2.9088	462.54	525.98	350.16	- 12.06	+ 32.09
77 Mechanical services	0.4290	261.50	260.64	237.99	+ 0.33	+ 9.88
78 Motor vehicle tax	0.0482	399.23	399.23	399.23	+ 0.00	+ 0.00
79 Transport services	1.7470	370.58	372.65	265.35	- 0.56	+ 39.66
<i>Communication</i>	2.3536	139.81	139.76	138.60	+ 0.04	+ 0.87
80 Postal services	0.0190	298.48	295.92	221.59	+ 0.87	+ 34.70
81 Communication apparatus	0.4524	192.46	192.35	189.42	+ 0.06	+ 1.60
82 Communication Services	1.8822	125.55	125.55	125.55	+ 0.00	+ 0.00
<i>Recreation and culture</i>	1.7301	252.10	250.24	250.36	+ 0.74	+ 0.69
83 Recreation and culture	0.6478	157.96	157.92	155.07	+ 0.03	+ 1.86
84 Text books	0.6655	298.07	297.49	306.27	+ 0.19	- 2.68
85 Newspapers	0.0716	278.85	242.82	216.94	+ 14.84	+ 28.54
86 stationery	0.3452	334.55	333.94	328.30	+ 0.18	+ 1.90
<i>Education</i>	4.8807	229.95	229.64	212.44	+ 0.13	+ 8.24
87 Education	4.8807	229.95	229.64	212.44	+ 0.13	+ 8.24
<i>Restaurants and hotels</i>	7.4050	298.29	299.09	283.57	- 0.27	+ 5.19
88 Readymade food	5.5235	309.04	306.49	290.36	+ 0.83	+ 6.43
89 Marriage Hall Charges	1.7514	272.53	284.01	269.74	- 4.04	+ 1.03
90 Accommodation Services	0.1301	189.06	187.71	181.32	+ 0.72	+ 4.27
<i>Misc. goods and services</i>	4.7720	356.59	363.87	317.53	- 2.00	+ 12.30
91 Personal Grooming Services	0.8001	281.23	280.62	261.86	+ 0.22	+ 7.40
92 Electrical Appliances for Per	0.0465	199.12	199.01	190.57	+ 0.06	+ 4.49
93 Appliances/Articles/Products	2.9807	300.80	299.98	281.33	+ 0.27	+ 6.92
94 Personal Effects n.e.c.	0.9447	604.19	644.07	485.11	- 6.19	+ 24.55

Annexure B: CPI (Rural) Index Numbers by Commodity Groups & Commodities (2015-16=100)

Item and Specification	Weight	Index Numbers			% Change in Jun 2026 over	
		Jun 26	May 26	Jun 25	May 2026	Jun 2025
General	100.0000	298.41	298.51	269.02	- 0.03	+ 10.92
Food and non-alcoholic Beverages	40.8668	298.32	295.76	270.88	+ 0.87	+ 10.13
01 Wheat	3.4736	321.22	317.68	197.66	+ 1.11	+ <u>62.51</u>
02 Wheat Flour	3.4297	320.84	317.99	198.77	+ 0.90	+ <u>61.41</u>
03 Wheat Products	0.1068	312.32	311.05	271.27	+ 0.41	+ 15.13
04 Besan	0.0728	225.27	230.76	273.10	- 2.38	- 17.51
05 Rice	1.5501	429.73	430.10	418.37	- 0.09	+ 2.72
06 Bakery and Confectionary	0.3702	333.89	332.69	308.83	+ 0.36	+ 8.11
07 Nimco	0.0774	320.93	321.44	303.25	- 0.16	+ 5.83
08 Meat	1.7146	399.02	398.45	362.67	+ 0.14	+ 10.02
09 Chicken	1.4641	230.47	291.63	252.38	- 20.97	- 8.68
10 Fish	0.2640	241.37	243.80	228.81	- 1.00	+ 5.49
11 Milk fresh	10.3803	283.69	281.77	263.07	+ 0.68	+ 7.84
12 Milk products	0.9624	279.37	277.06	260.76	+ 0.83	+ 7.14
13 Milk powder	0.1062	306.36	305.11	283.03	+ 0.41	+ 8.24
14 Eggs	0.5665	233.80	264.32	352.47	- 11.55	- 33.67
15 Butter	0.3333	340.81	340.81	308.84	+ 0.00	+ 10.35
16 Mustard oil	0.0136	341.95	344.56	324.72	- 0.76	+ 5.31
17 Cooking oil	0.6011	379.03	382.72	361.08	- 0.96	+ 4.97
18 Vegetable ghee	2.3764	402.22	399.94	373.64	+ 0.57	+ 7.65
19 Dry fruits	0.2496	397.27	400.11	364.32	- 0.71	+ 9.04
20 Fresh fruits	1.4505	327.51	332.43	329.71	- 1.48	- 0.67
21 Pulse Masoor	0.2076	201.05	204.30	226.36	- 1.59	- 11.18
22 Pulse Moong	0.2510	259.63	263.35	272.08	- 1.41	- 4.58
23 Pulse Mash	0.1465	200.07	203.79	206.38	- 1.83	- 3.06
24 Pulse Gram	0.2751	208.59	213.85	264.30	- 2.46	- 21.08
25 Gram Whole	0.1116	250.98	253.64	300.83	- 1.05	- 16.57
26 Beans	0.0896	391.75	395.68	407.12	- 0.99	- 3.78
27 Potatoes	0.7437	194.49	142.45	326.98	+ 36.53	- 40.52
28 Onions	0.8965	198.42	162.30	108.08	+ 22.26	+ <u>83.59</u>
29 Tomatoes	0.5069	247.83	130.27	151.71	+ <u>90.24</u>	+ <u>63.36</u>
30 Fresh Vegetables	2.0947	219.74	200.31	198.55	+ 9.70	+ 10.67
31 Sugar	2.0296	243.42	241.95	287.52	+ 0.61	- 15.34
32 Gur	0.1522	260.98	259.69	262.45	+ 0.50	- 0.56
33 Honey	0.0296	226.36	224.09	227.45	+ 1.01	- 0.48
34 Sweetmeat	0.3967	315.83	313.63	294.30	+ 0.70	+ 7.32
35 Ice Cream	0.0568	219.77	219.77	199.76	+ 0.00	+ 10.02
36 Condiments and Spices	1.4919	293.14	293.06	303.24	+ 0.03	- 3.33
37 Dessert Preparation	0.0133	302.62	301.33	271.11	+ 0.43	+ 11.62
38 Tea	1.2566	271.09	271.09	275.80	+ 0.00	- 1.71
39 Beverages	0.5537	262.36	261.60	252.41	+ 0.29	+ 3.94
Alcoholic Beverages, Tobacco	1.2786	384.76	380.88	374.43	+ 1.02	+ 2.76
40 Cigarettes	1.2364	384.17	380.54	374.67	+ 0.95	+ 2.54
41 Pan Prepared	0.0422	402.00	391.11	367.53	+ 2.78	+ 9.38
Clothing and footwear	9.4826	293.75	292.09	274.36	+ 0.57	+ 7.07
42 Cotton Cloth	2.8381	319.47	317.39	301.70	+ 0.66	+ 5.89
43 Woollen Cloth	1.0959	287.31	286.89	260.01	+ 0.15	+ 10.50
44 Readymade Garments	1.1345	270.53	268.15	251.73	+ 0.89	+ 7.47
45 Woollen Readymade Garments	0.5401	334.48	334.48	309.66	+ 0.00	+ 8.02
46 Tailoring	1.2999	280.49	278.11	259.96	+ 0.86	+ 7.90
47 Hosiery	0.4322	363.58	363.46	347.56	+ 0.03	+ 4.61
48 Dupatta	0.2078	278.78	267.96	253.03	+ 4.04	+ 10.18
49 Cleaning and Laundering	0.0176	270.02	269.53	259.09	+ 0.18	+ 4.22
50 Footware	1.9165	256.72	256.03	241.23	+ 0.27	+ 6.42
Housing, water, Elec., Gas and Other Fuels	18.4853	258.31	257.64	219.20	+ 0.26	+ 17.84
51 House Rent	8.6110	192.47	192.47	178.31	+ 0.00	+ 7.94
52 Construction Input Items	0.6306	290.91	291.33	252.28	- 0.14	+ 15.31
53 Construction Wage Rates	0.2526	262.04	257.36	242.52	+ 1.82	+ 8.05
54 Water Supply	0.0645	337.27	337.27	316.78	+ 0.00	+ 6.47
55 Garbage Collection	0.0080	225.10	225.10	204.36	+ 0.00	+ 10.15
56 Electricity Charges	3.4431	274.06	286.39	221.44	- 4.31	+ 23.76
57 Liquefied Hydrocarbons	0.9994	486.28	447.55	296.57	+ 8.65	+ <u>63.97</u>
58 Solid Fuel	4.4761	316.06	312.68	271.51	+ 1.08	+ 16.41

Annexure B: CPI (Rural) Index Numbers by Commodity Groups & Commodities (2015-16=100)

Item and Specification	Weight	Index Numbers			% Change in Jun 2026 over			
		Jun 26	May 26	Jun 25	May 2026	Jun 2025		
<i>Furnishing and household equipments</i>	4.1031	311.02	309.02	294.24	+	0.65	+	5.70
59 Furniture and Furnishing	0.5786	304.44	303.85	291.47	+	0.19	+	4.45
60 Household Textiles	0.4382	263.54	263.51	242.09	+	0.01	+	8.86
61 Household Equipments	1.2774	309.55	306.95	294.08	+	0.85	+	5.26
62 Plastic Products	0.0776	338.59	335.64	298.72	+	0.88	+	13.35
63 Major Tools and Equipments	0.0324	257.50	256.20	245.92	+	0.51	+	4.71
64 Washing Soaps, Detergents and	1.6989	326.38	323.86	309.48	+	0.78	+	5.46
<i>Health</i>	3.5141	295.91	292.42	272.32	+	1.19	+	8.66
65 Drugs and Medicines	1.5792	337.40	336.44	321.22	+	0.29	+	5.04
66 Doctor Clinic Fee	0.5128	369.88	361.44	317.67	+	2.34	+	16.44
67 Dental Services	0.0181	270.92	268.29	242.40	+	0.98	+	11.77
68 Medical Tests	0.3967	254.44	248.91	231.29	+	2.22	+	10.01
69 Hospitals Services	1.0073	209.98	205.85	189.28	+	2.01	+	10.94
<i>Transport</i>	5.5580	389.39	419.27	319.40	-	7.13	+	21.91
70 Motor Vehicles	0.7305	194.98	194.85	193.18	+	0.07	+	0.93
71 Motor Vehicles Accessories	0.1572	277.04	276.18	271.89	+	0.31	+	1.89
72 Motor Fuels	2.4932	471.67	540.38	351.22	-	12.72	+	34.29
73 Mechanical Services	0.3645	237.47	237.47	232.83	+	0.00	+	1.99
74 Motor Vehicle Tax	0.0174	342.03	342.03	342.03	+	0.00	+	0.00
75 Transport Services	1.7952	395.36	392.59	348.09	+	0.71	+	13.58
<i>Communication</i>	1.9940	130.14	130.13	129.06	+	0.01	+	0.84
76 Postal Services	0.0070	179.32	179.32	179.32	+	0.00	+	0.00
77 Communication Apparatus	0.3362	170.26	170.22	163.85	+	0.02	+	3.91
78 Communication Services	1.6508	121.76	121.76	121.76	+	0.00	+	0.00
<i>Recreation and culture</i>	1.3764	293.61	293.35	296.23	+	0.09	-	0.88
79 Recreation and Culture	0.4763	255.23	255.23	254.59	+	0.00	+	0.25
80 Text Books	0.5047	303.97	305.32	320.78	-	0.44	-	5.24
81 Newspapers	0.0230	323.36	282.94	242.52	+	14.29	+	33.33
82 Stationery	0.3724	326.84	326.52	319.53	+	0.10	+	2.29
<i>Education</i>	2.1342	265.38	264.31	244.66	+	0.40	+	8.47
83 Education	2.1342	265.38	264.31	244.66	+	0.40	+	8.47
<i>Restaurants and hotels</i>	6.1895	315.46	310.88	298.42	+	1.47	+	5.71
84 Readymade Food	3.8001	342.35	337.32	323.48	+	1.49	+	5.83
85 Marriage Hall Charges	2.2525	282.36	278.29	267.38	+	1.46	+	5.60
86 Accommodation Services	0.1369	113.48	113.48	113.40	+	0.00	+	0.07
<i>Misc. goods and services</i>	5.0174	385.65	392.19	344.07	-	1.67	+	12.08
87 Personal Grooming Services	1.5363	344.19	341.46	311.52	+	0.80	+	10.49
88 Appliances/Articles/Products	2.2746	276.44	274.86	265.48	+	0.57	+	4.13
89 Personal Effects n.e.c.	1.2065	644.35	678.00	533.66	-	4.96	+	20.74

Annexure C: Wholesale Price Indices by Major Groups & Commodities (2015-16=100)

Item and Specification	Weight	Index Numbers			% Change in Jun 2026 over		
		Jun 26	May 26	Jun 25	May 2026	Jun 2025	
General	100.0000	343.85	348.07	310.63	-	1.21	+ 10.69
Agriculture Forestry & Fishery	25.7674	281.16	278.55	276.18	+	0.94	+ 1.80
001 Wheat	0.6297	310.96	304.53	186.51	+	2.11	+ <u>66.73</u>
002 Maize	0.6764	325.11	347.70	272.87	-	6.50	+ 19.14
003 Rice	2.4413	318.42	316.35	312.23	+	0.65	+ 1.98
004 Sorghum / Jowar	0.0214	612.34	645.20	336.78	-	5.09	+ <u>81.82</u>
005 Millet / Bajra	0.0374	293.32	302.04	347.23	-	2.89	- 15.53
006 Vegetables	1.2441	290.73	222.73	235.25	+	30.53	+ 23.58
007 Fresh Fruits	1.5144	322.88	323.81	314.72	-	0.29	+ 2.59
008 Dry Fruits	0.2478	367.88	376.75	377.90	-	2.35	- 2.65
009 Cotton Seeds	1.1511	185.43	180.39	198.97	+	2.79	- 6.81
010 Other Oil Seeds	0.0722	285.43	285.82	277.63	-	0.14	+ 2.81
011 Edible Roots / Potatoes	0.2540	182.77	148.68	378.33	+	22.93	- <u>51.69</u>
012 Stimulant & Spice Crops	0.1634	295.40	300.51	442.83	-	1.70	- 33.29
013 Pulses	0.4901	228.61	231.30	272.41	-	1.16	- 16.08
014 Sugar Crops	1.0725	355.12	355.12	368.06	+	0.00	- 3.52
015 Fibre Crops	5.3169	296.21	296.11	316.25	+	0.03	- 6.34
016 Unmanufactured Tobacco	0.0742	587.91	572.56	565.92	+	2.68	+ 3.89
017 Poultry	0.5633	203.53	265.86	213.39	-	23.44	- 4.62
018 Raw Milk from Bovine Animals	7.0279	277.86	273.71	253.49	+	1.52	+ 9.61
019 Eggs	0.5034	232.95	264.77	350.88	-	12.02	- 33.61
020 Raw Animal Materials / Wool	0.0351	307.13	300.17	254.30	+	2.32	+ 20.77
021 Hides, Skins & Fur Skins, Raw	0.4834	63.30	60.14	59.43	+	5.25	+ 6.51
022 Fuel Wood in Logs	0.0179	246.57	246.57	214.22	+	0.00	+ 15.10
023 Fish Live Fresh or Chilled	1.7295	240.10	240.10	219.65	+	0.00	+ 9.31
Ores/Minerals, Elec., Gas & Water	12.0069	361.09	366.27	341.65	-	1.41	+ 5.69
024 Coal not Agglomerated	0.7508	219.17	234.58	219.17	-	6.57	+ 0.00
025 Natural Gas Liquefied	5.7065	457.86	457.82	417.69	+	0.01	+ 9.62
026 Salt & Pure Sodium Chloride	0.0584	463.83	454.16	407.96	+	2.13	+ 13.69
027 Electrical Energy	5.4912	278.85	288.19	278.66	-	3.24	+ 0.07
Food, Beverages, Tobacco, Textile	31.1122	302.88	300.62	282.70	+	0.75	+ 7.14
Food Products, Beverages & Tobacco	20.0718	326.17	324.08	299.23	+	0.64	+ 9.00
028 Meat of Animals	3.4559	383.20	382.22	337.12	+	0.26	+ 13.67
029 Vegetables & Fruit Juice	0.0058	259.19	253.73	252.99	+	2.15	+ 2.45
030 Dried Fruits & Nuts	0.1733	493.10	503.80	395.88	-	2.12	+ 24.56
031 Fruit Juices	0.3880	296.07	294.65	282.11	+	0.48	+ 4.95
032 Vegetable Oils Refined	1.9242	309.60	304.49	283.63	+	1.68	+ 9.16
033 Vegetable Ghee	1.5632	383.17	381.80	362.62	+	0.36	+ 5.67
034 Oil Cakes	0.9611	296.69	280.03	262.40	+	5.95	+ 13.07
035 Processed Liquid Milk	4.4437	338.91	338.91	327.06	+	0.00	+ 3.62
036 Milk & Cream in Solid Form	0.0316	323.70	320.94	299.13	+	0.86	+ 8.21
037 Ice Cream	0.0047	211.49	211.49	200.56	+	0.00	+ 5.45
038 Dairy Products N.E.C	0.0117	345.23	344.69	334.06	+	0.16	+ 3.34
039 Wheat Flour	2.3034	312.99	309.62	198.08	+	1.09	+ <u>58.01</u>
040 Other Cereal Flour	0.0604	209.95	212.01	270.97	-	0.97	- 22.52
041 Sugar Refined	1.7975	241.82	240.50	288.52	+	0.55	- 16.19
042 Chocolate	0.0139	144.60	144.39	143.40	+	0.15	+ 0.84
043 Sugar Confectionary	0.0738	317.43	317.00	315.04	+	0.14	+ 0.76
044 Coffee & Tea	0.7303	272.33	270.80	269.45	+	0.56	+ 1.07
045 Spices	0.1449	339.22	339.07	301.74	+	0.04	+ 12.42
046 Other Food Products	0.0336	361.85	365.02	333.47	-	0.87	+ 8.51
047 Mineral Water	0.0207	222.12	222.04	214.89	+	0.04	+ 3.36
048 Beverages	0.6303	269.08	267.78	261.51	+	0.49	+ 2.89
049 Tobacco Products	1.2998	301.20	301.20	301.20	+	0.00	+ 0.00
Textiles & Apparels	10.3289	263.81	261.46	257.75	+	0.90	+ 2.35
050 Cotton Yarn	5.2491	239.61	239.61	239.61	+	0.00	+ 0.00
051 Nylon Yarn	0.1719	95.24	95.24	95.24	+	0.00	+ 0.00
052 Blended Yarn	0.1689	148.12	148.12	148.12	+	0.00	+ 0.00
053 Woven Fabrics	0.0128	333.15	307.27	265.43	+	8.42	+ 25.51
054 Cotton Fabrics	0.6343	378.84	378.83	348.19	+	0.00	+ 8.80
055 Other Fabrics	1.1016	293.05	276.74	271.73	+	5.89	+ 7.85
056 Silk & Reyon Fabrics	0.7350	414.76	406.64	400.68	+	2.00	+ 3.51
057 Towels	0.1235	209.23	209.23	205.30	+	0.00	+ 1.91

Annexure C: Wholesale Price Indices by Major Groups & Commodities (2015-16=100)

Item and Specification	Weight	Index Numbers			% Change in Jun 2026 over	
		Jun 26	May 26	Jun 25	May 2026	Jun 2025
058 Blankets	0.0029	168.88	168.88	158.72	+ 0.00	+ 6.40
059 Bed Sheets	0.0913	225.37	225.37	203.39	+ 0.00	+ 10.81
060 Quilts	0.0019	243.70	243.70	243.00	+ 0.00	+ 0.29
061 Woollen Carpets	0.0383	184.00	184.00	177.15	+ 0.00	+ 3.87
062 Synthetic Carpets	0.0566	160.49	160.49	156.16	+ 0.00	+ 2.77
063 Hosiery Products	0.8832	217.84	217.84	213.93	+ 0.00	+ 1.83
064 Readymade Garments	1.0576	281.38	281.38	279.50	+ 0.00	+ 0.67
Leather Products	0.7115	212.86	207.33	178.56	+ 2.67	+ 19.21
065 Leather Without Hair	0.2973	175.98	175.98	174.84	+ 0.00	+ 0.65
066 Other Leather N.E.C	0.2567	156.53	141.18	141.18	+ 10.87	+ 10.87
067 Footwears	0.1575	374.30	374.30	246.48	+ 0.00	+ <u>51.86</u>
Other Transportable Goods	22.3979	437.28	460.64	341.74	- 5.07	+ 27.96
068 Timber	0.0165	243.42	247.37	247.74	- 1.60	- 1.74
069 Printing Paper	0.4279	305.81	305.81	258.64	+ 0.00	+ 18.24
070 Hard Board	0.1579	261.62	261.62	261.62	+ 0.00	+ 0.00
071 Motor Spirit	1.6268	498.18	580.45	362.79	- 14.17	+ 37.32
072 Diesel Oil	5.4849	469.09	552.27	327.45	- 15.06	+ 43.26
073 Kerosene Oil	0.2151	508.90	635.10	327.75	- 19.87	+ <u>55.27</u>
074 Furnace Oil	3.2664	766.10	766.10	544.61	+ 0.00	+ 40.67
075 Mobil Oil	0.7114	293.76	280.91	251.76	+ 4.57	+ 16.68
076 Chemicals	1.7720	316.25	310.32	272.07	+ 1.91	+ 16.24
077 Dyeing Material	0.1539	335.16	335.16	272.52	+ 0.00	+ 22.99
078 Fertilizers	2.8657	316.82	304.00	273.77	+ 4.22	+ 15.72
079 Pesticides	0.2763	244.06	244.06	217.59	+ 0.00	+ 12.17
080 Insecticides	0.1276	197.82	197.82	174.37	+ 0.00	+ 13.45
081 Paints & Varnishes	0.1916	282.34	278.92	278.01	+ 1.23	+ 1.56
082 Medicines	1.1428	425.60	393.83	385.56	+ 8.07	+ 10.38
083 Soaps & Detergents	0.8168	256.97	246.64	240.71	+ 4.19	+ 6.76
084 Auto Tyres	0.2703	268.03	275.82	262.58	- 2.82	+ 2.08
085 Plastic Products	0.4550	223.28	223.24	208.70	+ 0.02	+ 6.99
086 Glass sheets	0.2089	401.75	401.67	388.07	+ 0.02	+ 3.53
087 Other Glass Articles	0.1635	242.73	242.48	215.98	+ 0.10	+ 12.39
088 Ceramics & Sanitary Fixture	0.0244	250.32	244.89	228.90	+ 2.22	+ 9.36
089 Bricks, Blocks & Tiles	0.1566	225.65	226.63	207.55	- 0.43	+ 8.72
090 Cement	1.8145	298.03	301.14	282.38	- 1.03	+ 5.54
091 Bed Foam	0.0006	331.97	331.97	329.62	+ 0.00	+ 0.71
092 Matches	0.0505	3382.02	3382.02	3348.99	+ 0.00	+ 0.99
Metal Product, Machinery & Equipments	8.7156	411.58	408.65	389.51	+ 0.72	+ 5.67
093 Steel Bar & Sheets	1.4615	333.72	333.60	316.97	+ 0.04	+ 5.28
094 Pipe Fittings	0.0780	511.20	511.20	507.74	+ 0.00	+ 0.68
095 Steel Products	0.3879	286.41	286.21	285.30	+ 0.07	+ 0.39
096 Engines & Motors	0.0046	242.26	242.26	216.19	+ 0.00	+ 12.06
097 Vacuum Pumps	0.0155	107.56	107.56	107.56	+ 0.00	+ 0.00
098 Air Conditioners	0.0049	310.77	310.77	310.77	+ 0.00	+ 0.00
099 Cultivators	0.0551	361.67	361.67	361.67	+ 0.00	+ 0.00
100 Chuff Cutter	0.1293	519.00	519.00	519.00	+ 0.00	+ 0.00
101 Tractors	0.0028	356.87	356.87	344.29	+ 0.00	+ 3.65
102 Lathe Machines	0.0525	553.18	548.09	535.99	+ 0.93	+ 3.21
103 Concrete Mixture	0.0107	462.05	462.05	445.73	+ 0.00	+ 3.66
104 Fridge,WashM,SewM,Fans,Iron	1.1645	320.04	318.83	309.33	+ 0.38	+ 3.46
105 Electric Wires	0.0912	428.90	411.02	368.22	+ 4.35	+ 16.48
106 Lighting Equipments	1.4431	757.41	757.41	757.41	+ 0.00	+ 0.00
107 Radio & Television	0.1843	192.13	192.13	190.54	+ 0.00	+ 0.83
108 Motor Vehicles	0.0244	271.56	271.56	268.12	+ 0.00	+ 1.28
109 Motorcycles	0.2570	271.57	271.57	263.76	+ 0.00	+ 2.96
110 Bicycles	3.3483	360.03	353.47	316.55	+ 1.86	+ 13.74
