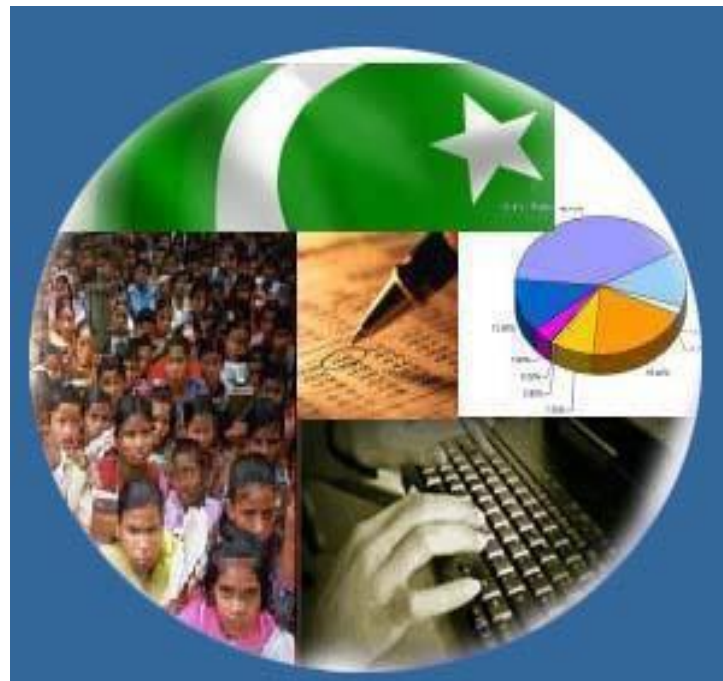




Monthly Review on Price Indices



April 2026
(Base Year 2015-16)

Government of Pakistan
Ministry of Planning, Development & Special Initiatives
Pakistan Bureau of Statistics
Islamabad

PRICE STATISTICS TEAM

S#	Name	Designation
1.	Dr. Naeem Uz Zafar (S.I)	Chief Statistician
2.	Syed Abdul Qader Shah	Director General
3.	Mr. Naseer Ahmad	Director
4.	Dr. Ahtasham Gul	Chief Statistical Officer
5.	Mr. Kashif Ali	Statistical Officer
6.	Miss. Umaira Zareen	Statistical Officer
7.	Mr. Abdul Qadir	Statistical Officer
8.	Mrs. Safia Akram	Statistical Officer
9.	Mrs. Faiza Razzaq	Statistical Officer
10.	Mr. Umer Farooq	Statistical Officer
11.	Mr. Ansar Mahmood	Statistical Assistant
12.	Mrs. Madiha Gulfraz	Statistical Assistant
13.	Mrs. Humail Fatima	Statistical Assistant

IT & SOFTWARE TEAM

1.	Mr. Muhammad Ehtesham	Director (DP)
2.	Mr. Arsalan Bashir	Chief System Analyst
3.	Mr. Muhammad Kibria	Data Processing Officer
4.	Mr. Irfan Bajwa	Data Processing Officer

Inflation in Brief

- CPI inflation General**, increased by 10.9% on year-on-year basis in April 2026 as compared to an increase of 7.3% in the previous month and 0.3% in April 2025. On month-on-month basis, it increased by 2.5% in April 2026 as compared to an increase of 1.2% in the previous month and a decrease of 0.8% in April 2025.
- CPI inflation Urban**, increased by 11.1% on year-on-year basis in April 2026 as compared to an increase of 7.4% in the previous month and an increase of 0.5% in April 2025. On month-on-month basis, it increased by 2.7% in April 2026 as compared to an increase of 1.3% in the previous month and a decrease of 0.7% in April 2025.
- CPI inflation Rural**, increased by 10.6% on year-on-year basis in April 2026 as compared to an increase of 7.2% in the previous month and a decrease of 0.1% observed in April 2025. On month-on-month basis, it increased by 2.1% in April 2026 as compared to an increase of 1.0% in the previous month and a decrease of 1.0% in April 2025.
- SPI inflation** on YoY basis increased by 10.1% in April 2026 as compared to an increase of 5.6% in the previous month and a decrease of 3.6% in April 2025. On MoM basis, it increased by 2.0% in April 2026 as compared to an increase of 0.7% in the previous month and a decrease of 2.1% in April 2025.
- WPI inflation** on YoY basis increased by 13.6% in April 2026 as compared to an increase of 6.7% in the previous month and a decrease of 2.2% in April 2025. On month-on-month basis, it increased by 5.1% in April 2026 as compared to an increase of 5.9% in the previous month and a decrease of 1.3% in April 2025.
- Figures 1 and 2 show graphically the yearly data of Table 1.a for Urban and Rural CPI while Table 1.1 shows "Period Average" and "YoY" percentage changes in indices.

Table 1.a General Inflation (%) (Base 2015-16)																		
PERIOD	CPI														SPI*		WPI	
	General						Food				Non-Food							
	National		Urban		Rural		Urban		Rural		Urban		Rural		YoY	MoM	YoY	MoM
	YoY	MoM	YoY	MoM	YoY	MoM	YoY	MoM	YoY	MoM	YoY	MoM	YoY	MoM				
July-24	11.1	2.1	13.2	2.0	8.1	2.2	3.4	4.5	1.3	3.6	20.7	0.5	15.5	0.9	15.7	2.0	10.4	2.3
Aug-24	9.6	0.4	11.7	0.3	6.7	0.6	4.1	1.3	1.9	1.3	17.4	-0.4	11.9	-0.2	10.8	-0.3	6.3	0.3
Sep-24	6.9	-0.5	9.3	-0.5	3.6	-0.5	1.7	-0.8	-0.9	-1.0	15.0	-0.3	8.4	-0.1	9.2	0.2	1.9	-1.1
Oct-24	7.2	1.2	9.3	1.1	4.2	1.5	2.7	1.6	0.6	2.2	14.2	0.7	8.0	0.8	9.7	0.6	3.9	0.0
Nov-24	4.9	0.5	5.2	0.5	4.3	0.5	1.7	-0.2	-0.2	0.2	7.8	1.0	9.1	0.8	7.3	1.0	2.3	-0.1
Dec-24	4.1	0.1	4.4	-0.1	3.6	0.3	2.5	0.1	-0.2	0.1	5.7	-0.2	7.6	0.5	4.2	0.8	1.9	-0.4
Jan-25	2.4	0.2	2.7	0.2	1.9	0.2	-0.6	-0.3	-2.9	-0.4	5.0	0.5	7.0	0.9	0.7	-1.4	0.6	0.2
Feb-25	1.5	-0.8	1.8	-0.7	1.1	-1.1	-0.9	-1.8	-4.3	-2.5	3.6	0.1	6.6	0.3	-0.2	-1.6	-0.7	-0.2
Mar-25	0.7	0.9	1.2	0.8	0.0	1.1	-1.7	1.6	-5.4	1.6	3.1	0.2	5.6	0.5	-2.3	-0.1	-1.6	0.3
Apr-25	0.3	-0.8	0.5	-0.7	-0.1	-1.0	-1.9	-1.6	-4.6	-1.8	2.2	-0.1	4.4	-0.4	-3.6	-2.1	-2.2	-1.3
May-25	3.5	-0.2	3.5	0.1	3.4	-0.5	5.3	0.6	2.1	-1.0	2.4	-0.3	4.6	-0.1	-0.6	-1.0	0.4	0.0
June-25	3.2	0.2	3.0	0.1	3.6	0.5	4.2	-0.6	2.4	0.1	2.2	0.5	4.7	0.8	-1.9	0.0	0.6	0.6
July-25	4.1	2.9	4.4	3.4	3.5	2.2	2.2	2.4	1.5	2.7	5.9	4.1	5.4	1.6	-0.9	3.1	-0.5	1.2
Aug-25	3.1	-0.6	3.5	-0.7	2.5	-0.5	-0.5	-1.3	-0.5	-0.7	6.1	-0.3	5.3	-0.3	2.6	3.2	-1.0	-0.2
Sep-25	5.8	2.1	5.7	1.6	5.9	2.8	4.4	4.0	6.0	5.5	6.5	0.1	5.8	0.4	4.5	2.0	0.6	0.5
Oct-25	6.2	1.7	6.0	1.4	6.6	2.1	4.5	1.7	6.8	3.0	7.0	1.1	6.4	1.3	4.8	0.9	1.1	0.5
Nov-25	6.1	0.4	6.1	0.5	6.3	0.2	5.0	0.3	5.9	-0.7	6.7	0.7	6.7	1.0	4.2	0.4	1.1	-0.2
Dec-25	5.6	-0.4	5.8	-0.4	5.4	-0.6	3.2	-1.7	3.8	-1.9	7.5	0.5	6.9	0.7	2.5	-0.8	0.6	-0.9
Jan-26	5.8	0.4	5.8	0.2	5.8	0.6	3.3	-0.2	4.7	0.4	7.4	0.5	6.9	0.8	3.3	-0.8	0.2	-0.2
Feb-26	7.0	0.3	6.8	0.3	7.3	0.3	4.4	-0.8	6.8	-0.5	8.3	0.9	7.7	1.0	4.8	-0.1	1.0	0.7
Mar-26	7.3	1.2	7.4	1.3	7.2	1.0	2.9	0.1	4.5	-0.6	10.3	2.1	9.7	2.4	5.6	0.7	6.7	5.9
Apr-26	10.9	2.5	11.1	2.7	10.6	2.1	6.9	2.3	7.3	0.9	13.8	3.0	13.6	3.2	10.1	2.0	13.6	5.1

* SPI for quintile 1. Digits 0.0* are due to rounding off.

Core inflation (NFNE)

7. Measured by **non-food non-energy Urban** increased by 8.0% on (YoY) basis in April 2026 as compared to an increase of 7.4% in the previous month and 7.4% in April 2025. On (MoM) basis, it increased by 1.9% in April 2026 as compared to 0.7% in previous month and an increase of 1.3% in the corresponding month of last year i.e. April 2025.
8. Measured by **non-food non-energy Rural** increased by 8.5% on (YoY) basis in April 2026 as compared to an increase of 8.4% in the previous month and an increase of 9.0% in April 2025. On (MoM) basis, it increased by 1.1% in April 2026 as compared to an increase of 0.8% in the previous month and an increase of 0.9% in the corresponding month of last year i.e. April 2025.

Core inflation (Trimmed)

9. Measured by 20% **weighted trimmed mean Urban** increased by 9.2% on (YoY) basis in April 2026 as compared to an increase of 5.9% in the previous month and 3.8% in April 2025. On (MoM) basis, it increased by 1.1% in April 2026 as compared to an increase of 0.6% a month earlier and an increase of 0.3% in the corresponding month of last year i.e. April 2025.
10. Measured by 20% **weighted trimmed mean Rural** increased by 8.9% on (YoY) basis in April 2026 as compared to an increase of 6.3% in the previous month and 3.3% in April 2025. On (MoM) basis, it increased by 1.0% in April 2026 as compared to an increase of 0.5% in the previous month and a decrease of 0.1% in the corresponding month of last year i.e. April 2025.

Table 1.b Core Inflation (%) (Base 2015-16)

Period	NFNE				Trimmed			
	Urban		Rural		Urban		Rural	
	YoY	MoM	YoY	MoM	YoY	MoM	YoY	MoM
Apr-25	7.4	1.3	9.0	0.9	3.8	0.3	3.3	-0.1
May-25	7.3	0.4	8.8	0.4	4.9	0.1	4.7	-0.2
June-25	6.9	0.2	8.6	0.7	4.7	0.3	5.2	0.5
July-25	7.0	0.8	8.1	0.7	5.1	1.0	4.9	0.7
Aug-25	6.9	0.3	7.8	0.2	4.2	0.0	3.5	0.3
Sep-25	7.0	0.3	7.8	0.6	5.7	0.3	6.5	0.7
Oct-25	7.5	1.1	8.4	1.3	6.0	0.9	6.8	1.2
Nov-25	6.6	0.3	8.2	0.5	5.3	0.3	6.4	0.4
Dec-25	6.9	0.5	8.1	0.6	5.5	0.3	6.0	0.4
Jan-26	7.2	1.0	8.3	1.1	4.9	0.5	5.4	0.7
Feb-26	7.1	0.2	8.3	0.4	5.1	0.2	5.6	0.3
Mar-26	7.4	0.7	8.4	0.8	5.9	0.6	6.3	0.5
Apr-26	8.0	1.9	8.5	1.1	9.2	1.1	8.9	1.0

Table 1.1 Period Average and Y-o-Y % Change

INDEX	Average July - April % Changes			April over April % Changes		
	2025-2026	2024-2025	2023-2024	2025-2026	2024-2025	2023-2024
CPI (National)	6.19	4.73	25.97	10.89	0.28	17.34
CPI (Urban)	6.25	5.74	26.27	11.11	0.54	19.40
CPI (Rural)	6.10	3.29	25.55	10.56	-0.10	14.46
SPI	4.12	4.85	30.17	10.06	-3.59	21.64
WPI	2.31	2.18	22.37	13.57	-2.20	13.88

Figure 1: Urban Inflation - YoY, Special Indices

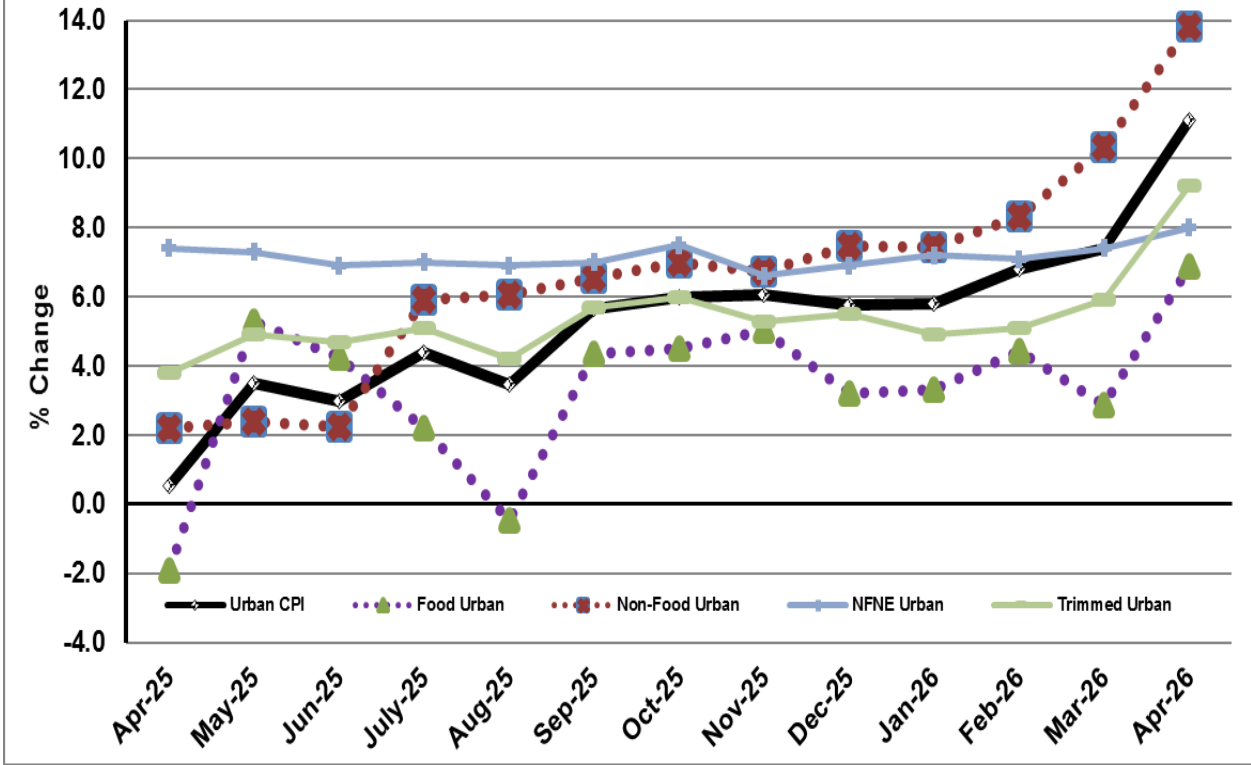


Figure 2: Rural Inflation - YoY, Special Indices

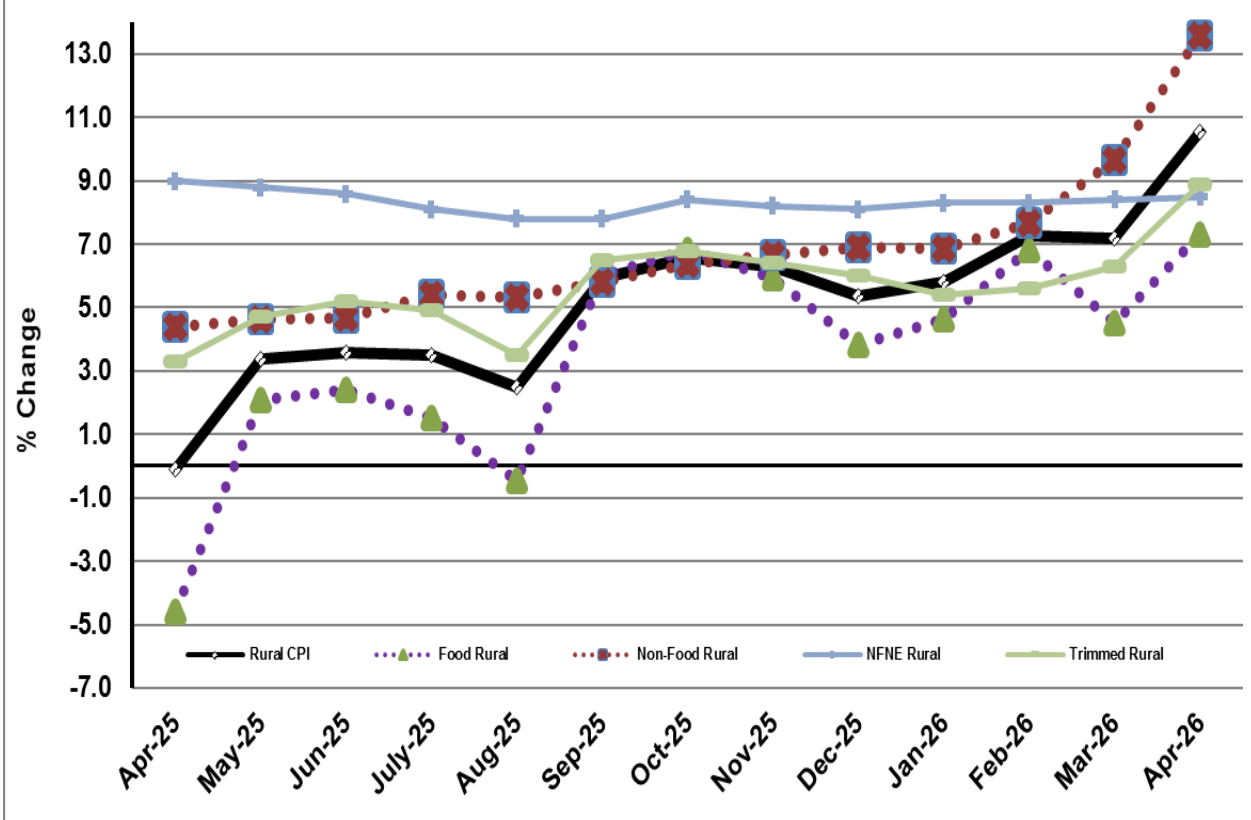


Figure 3: Urban Inflation - MoM, Special Indices

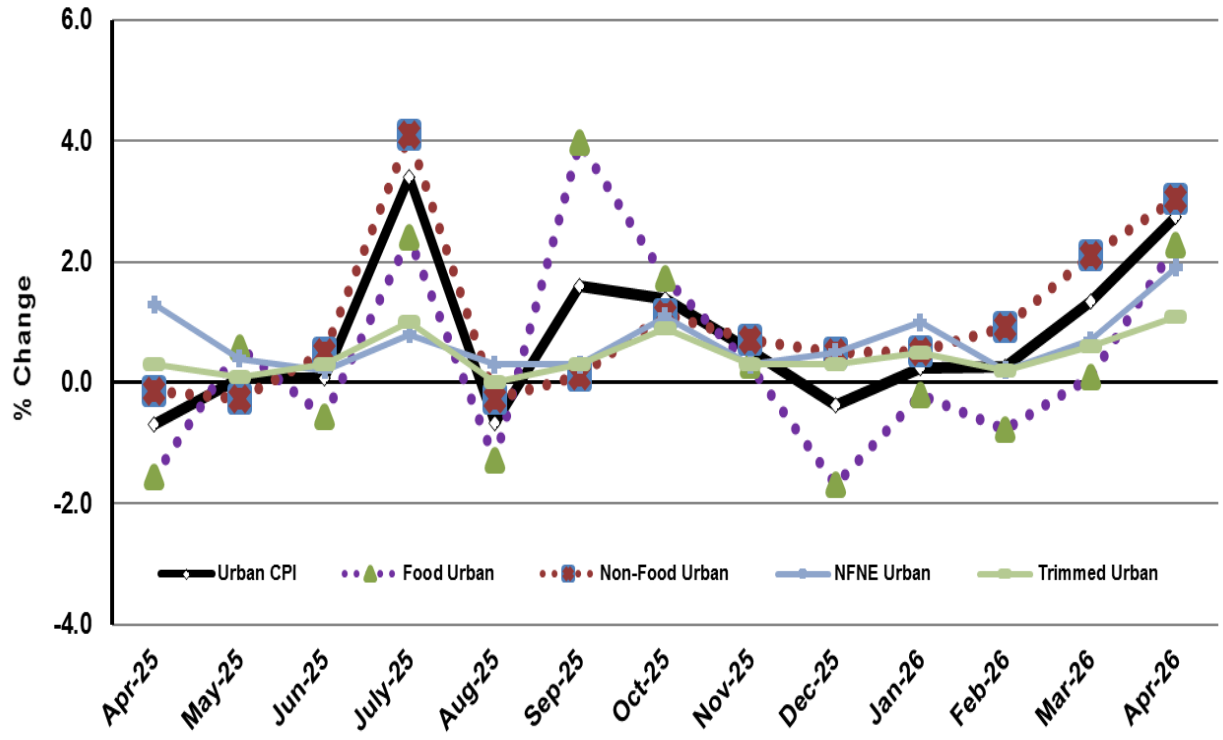
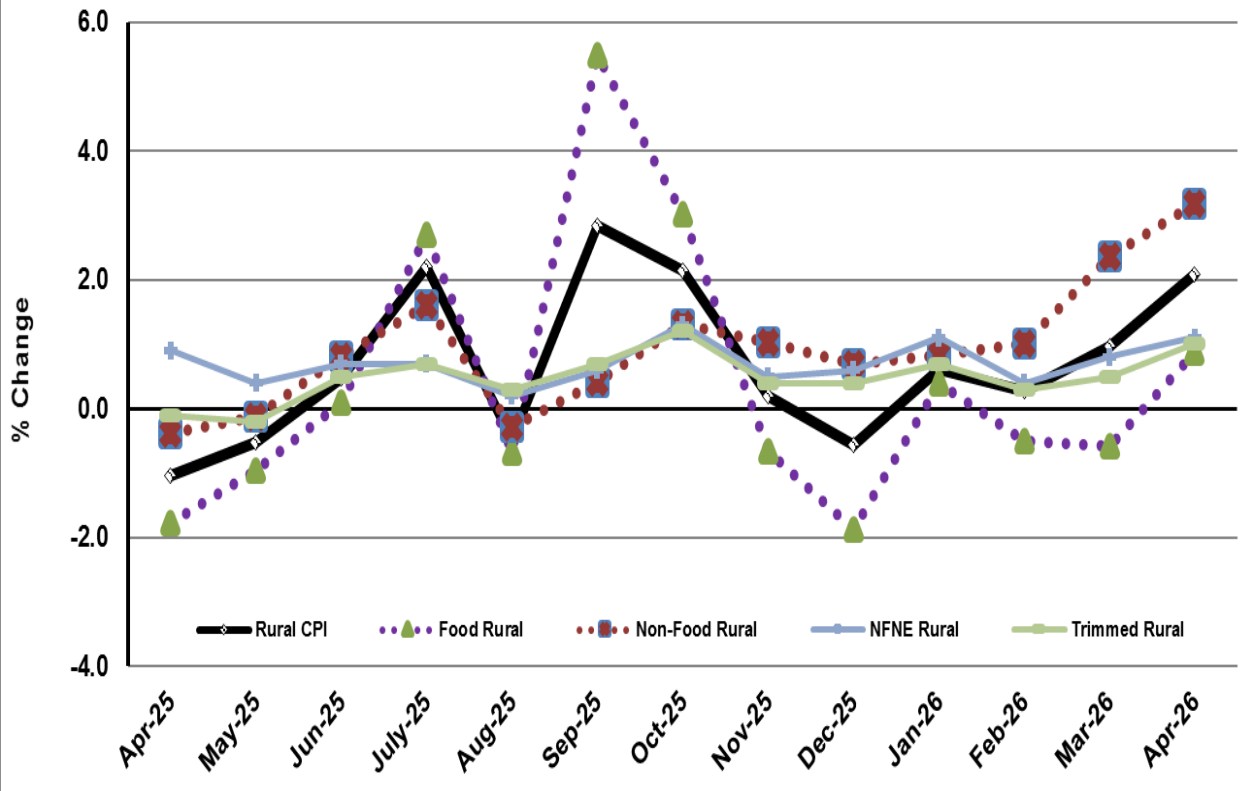
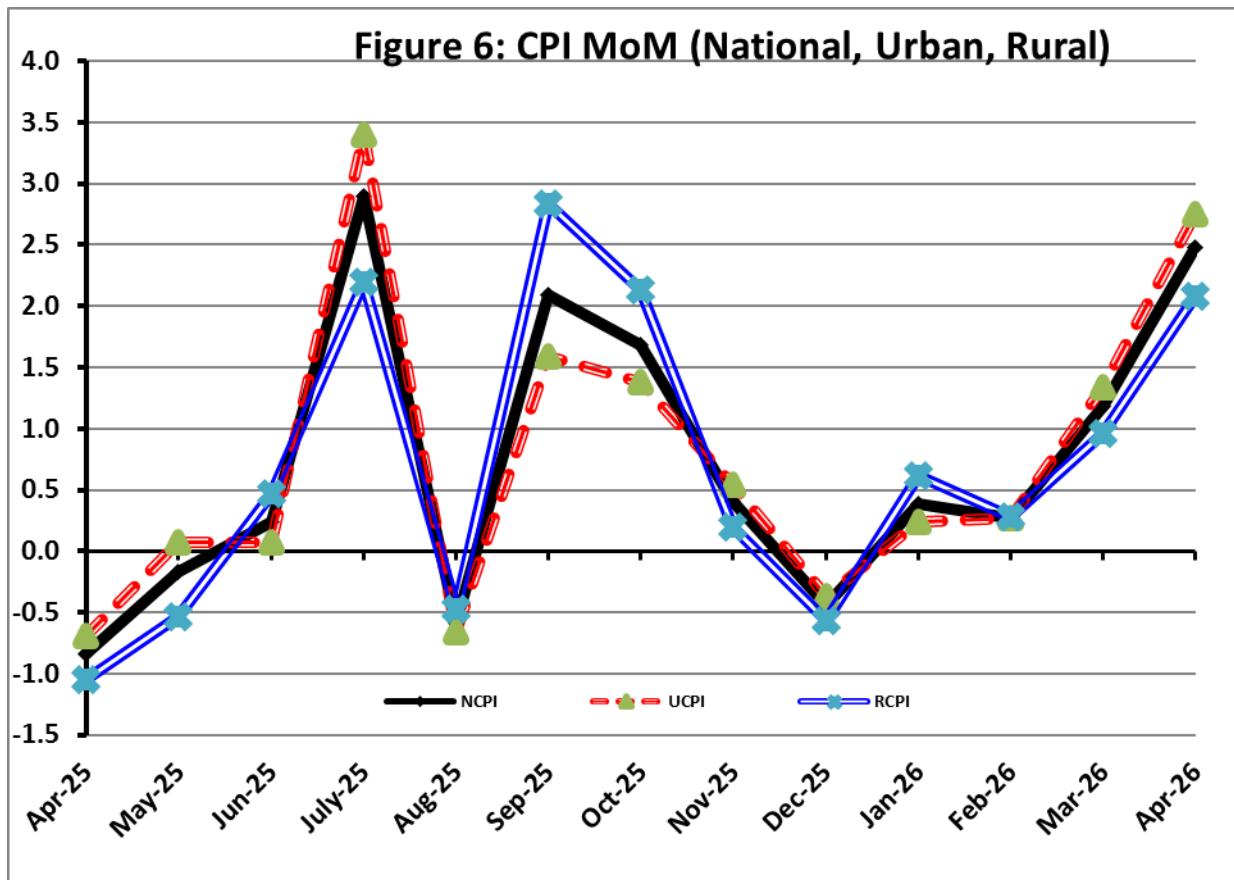
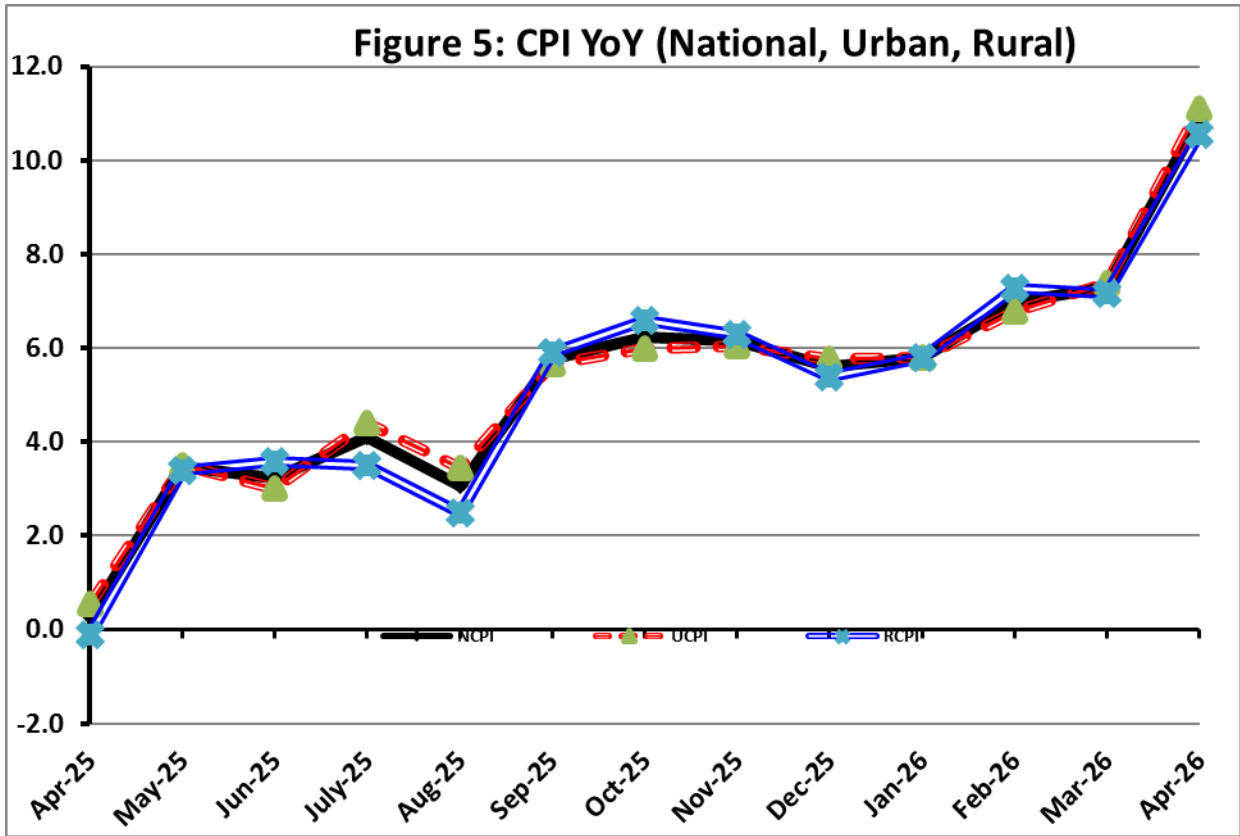


Figure 4: Rural Inflation - MoM, Special Indices





I. National Consumer Price Index (NCPI)

The **National Consumer Price Index** for **April 2026** is increased by **2.48%** over **March 2026** and increased by **10.89%** over corresponding month of the last year i.e. **April 2025**.

Table 1: Consumer Price Index (National) by Group of Commodities and Services (Base 2015-16)

No	Group	Group Weight (%)	Indices			% Change Apr 2026 Over		Impact (In % points) Apr 2026 Over	
			Apr 26	Mar 26	Apr 25	Mar 26	Apr 25	Mar 26	Apr 25
	General	100.00	292.81	285.73	264.06	2.48	10.89	2.48	10.89
1.	Food & Non-alcoholic Bev.	34.58	293.41	288.22	272.61	1.80	7.63	0.63	2.72
	<i>Non-perishable Food Items</i>	29.60	300.30	299.87	279.96	0.14	7.26	0.04	2.28
	<i>Perishable Food Items</i>	4.99	252.47	219.07	228.98	15.25	10.26	0.58	0.44
2.	Alcoholic Bev. & Tobacco	1.02	403.13	402.41	395.15	0.18	2.02	0.00	0.03
3.	Clothing & Footwear	8.60	276.19	274.01	260.06	0.80	6.20	0.07	0.53
4.	Housing, Water, Electricity, Gas & Fuels	23.63	272.87	266.40	233.53	2.43	16.84	0.53	3.52
5.	Furnishing & Household Equipment Maintenance	4.10	287.69	286.14	277.13	0.54	3.81	0.02	0.16
6.	Health	2.79	290.04	289.16	270.87	0.31	7.08	0.01	0.20
7.	Transport	5.91	399.70	346.13	307.75	15.47	29.88	1.11	2.06
8.	Communication	2.21	136.11	135.97	134.98	0.10	0.84	0.00	0.01
9.	Recreation & Culture	1.59	264.79	265.15	278.93	-0.14	-5.07	0.00	-0.09
10.	Education	3.79	235.62	228.85	217.62	2.96	8.27	0.09	0.26
11.	Restaurants & Hotels	6.92	301.53	299.38	286.41	0.72	5.28	0.05	0.40
12.	Miscellaneous	4.87	379.94	381.76	321.11	-0.48	18.32	-0.03	1.08

II. Urban Consumer Price Index (UCPI)

The Urban Consumer Price Index for **April 2026** is increased by **2.75%** over **March 2026** and increased by **11.11%** over corresponding month of the last year i.e. **April 2025**.

Table 2: Consumer Price Index (Urban) by Group of Commodities and Services (Base 2015-16)

No	Group	Group Weight (%)	Indices			% Change Apr 2026 Over		Impact (In % points) Apr 2026 Over	
			Apr 26	Mar 26	Apr 25	Mar 26	Apr 25	Mar 26	Apr 25
	General	100.00	289.61	281.87	260.65	2.75	11.11	2.75	11.11
1.	Food & Non-alcoholic Bev.	30.42	291.71	284.32	271.43	2.60	7.47	0.80	2.37
	<i>Non-perishable Food Items</i>	25.97	297.55	295.00	278.85	0.86	6.71	0.23	1.86
	<i>Perishable Food Items</i>	4.46	257.64	222.03	228.22	16.04	12.89	0.56	0.50
2.	Alcoholic Bev. & Tobacco	0.85	426.88	426.28	417.98	0.14	2.13	0.00	0.03
3.	Clothing & Footwear	8.01	264.87	262.74	251.04	0.81	5.51	0.06	0.42
4.	Housing, Water, Electricity, Gas & Fuels	27.03	278.36	273.89	239.51	1.63	16.22	0.43	4.03
5.	Furnishing & Household Equip. & Maintenance	4.09	276.49	274.82	267.22	0.61	3.47	0.02	0.15
6.	Health	2.31	290.64	289.27	273.81	0.47	6.15	0.01	0.15
7.	Transport	6.14	398.87	340.79	301.84	17.04	32.15	1.26	2.28
8.	Communication	2.35	139.47	139.25	138.39	0.16	0.78	0.00	0.01
9.	Recreation & Culture	1.73	249.80	249.70	261.43	0.04	-4.45	0.00	-0.08
10.	Education	4.88	227.74	221.05	211.42	3.03	7.72	0.12	0.31
11.	Restaurants & Hotels	7.41	296.83	294.18	282.36	0.90	5.12	0.07	0.41
12.	Miscellaneous	4.77	367.68	369.43	311.43	-0.47	18.06	-0.03	1.03

Main contributors to month-on-month and year-on-year percentage changes are given below and detail is given in **Annexure-A**.

MONTH-ON-MONTH: Top few commodities which varied from previous month i.e. **March, 2026** are given below:

FOOD

Increased: Tomatoes (57.10%), Fresh Vegetables (40.67%), Eggs (14.38%), Onions (9.23%), Potatoes (4.43%), Beverages (4.07%), Milk Products (3.54%), Milk Fresh (2.89%), Chicken (2.69%), Meat (2.66%), Bakery and Confectionary (2.64%), Pulse Mash (2.61%), Readymade Food (1.07%) and Rice (0.99%).

Decreased: Wheat (9.05%), Wheat Flour (4.75%), Fish (1.63%), Fresh Fruits (1.09%), Sugar (0.99%), Wheat Products (0.95%), Gur (0.93%), Beans (0.85%), Pulse Masoor (0.68%), Besan (0.67%), Cooking Oil (0.08%) and Pulse Gram (0.08%).

NON-FOOD:

Increased: Liquified Hydrocarbons (38.34%), Transport Services (27.86%), Motor Fuel (18.22%), Postal Services (7.54%), Medical Tests (3.06%), Education (3.03%), Construcion Input Items (2.03%), Hosiry (1.66%), Woolen Cloth (1.60%), House Rent (1.40%), Major Tools & Equipments (1.32%), Dopatta (1.04%) and Household Equipments (0.93%).

Decreased: Personal Effects (2.27%), Electricity charges (0.71%) and Carpets (0.15%).

YEAR-ON-YEAR: Top few commodities, which varied from corresponding month of previous year i.e. **April 2025**, are given below:

FOOD:

Increased: Tomatoes (75.37%), Onions (41.74%), Wheat (39.44%), Wheat Flour (30.57%), Fresh Vegetables (25.66%), Butter (13.63%), Meat (12.48%), Dessert Preparation (11.30%), Wheat Products (10.49%), Milk Powder (9.66%), Fish (9.24%), Dry Fruits (9.00%), Condiments and Spices (8.04%), Eggs (7.79%), Bakery and Confectionary (6.93%), Rice (6.88%), Milk Products (6.44%) and Fresh Fruits (6.37%).

Decreased: Potatoes (37.46%), Pulse Gram (16.47%), Besan (16.18%), Gram Whole (14.65%), Chicken (12.76%), Pulse Masoor (11.59%), Sugar (10.99%), Beans (7.15%), Pulse Moong (2.37%) and Tea (0.77%).

NON-FOOD:

Increased: Liquified Hydrocarbons (63.36%), Personal Effects (45.57%), Motor Fuel (40.21%), Transport Services (37.65%), Electricity Charges (33.71%), Postal Services (23.65%), Gas Charges (22.91%), Newspapers (11.93%), Major Tools & Equipments (10.88%), Cleaning & Laundring (10.13%) and Solid Fuel (9.67%).

Decreased: Text Books (11.31%).

III. Rural Consumer Price Index (RCPI)

The Rural Consumer Price Index for April 2026 is increased by 2.09% over March 2026 and increased by 10.56% over corresponding month of the last year i.e. April 2025.

Table 3: Consumer Price Index (Rural) by Group of Commodities and Services (Base 2015-16)

No	Group	Group Weight (%)	Indices			% Change Apr 2026 Over		Impact (In % points) Apr 2026 Over	
			Apr 26	Mar 26	Apr 25	Mar 26	Apr 25	Mar 26	Apr 25
	General	100.00	297.63	291.55	269.20	2.09	10.56	2.09	10.56
1.	Food & Non-alcoholic Bev.	40.87	295.32	292.61	273.94	0.93	7.80	0.38	3.25
	<i>Non-perishable Food Items</i>	<i>35.08</i>	<i>303.38</i>	<i>305.32</i>	<i>281.21</i>	<i>-0.64</i>	<i>7.88</i>	<i>-0.23</i>	<i>2.89</i>
	<i>Perishable Food Items</i>	<i>5.79</i>	<i>246.47</i>	<i>215.63</i>	<i>229.86</i>	<i>14.30</i>	<i>7.23</i>	<i>0.61</i>	<i>0.36</i>
2.	Alcoholic Bev. & Tobacco	1.28	379.18	378.34	372.13	0.22	1.89	0.00	0.03
3.	Clothing & Footwear	9.48	290.63	288.37	271.57	0.78	7.02	0.07	0.67
4.	Housing, Water, Electricity, Gas & Fuels	18.49	260.74	249.88	220.34	4.35	18.34	0.69	2.77
5.	Furnishing & Household Equip. & Maintenance	4.10	304.56	303.19	292.05	0.45	4.28	0.02	0.19
6.	Health	3.51	289.45	289.05	267.95	0.14	8.02	0.00	0.28
7.	Transport	5.56	401.07	355.04	317.59	12.96	26.29	0.88	1.72
8.	Communication	1.99	130.13	130.13	128.91	0.00	0.95	0.00	0.01
9.	Recreation & Culture	1.38	293.22	294.46	312.12	-0.42	-6.06	-0.01	-0.10
10.	Education	2.13	262.83	255.80	239.01	2.75	9.97	0.05	0.19
11.	Restaurants & Hotels	6.19	310.03	308.76	293.73	0.41	5.55	0.03	0.37
12.	Miscellaneous	5.02	397.53	399.47	335.00	-0.49	18.67	-0.03	1.17

Main contributors to month-on-month and year-on-year percentage changes are given below and detail is given in **Annexure-B**.

MONTH-ON-MONTH Top few commodities which varied from previous month i.e. March, 2026 are given below:

FOOD

Increased: Tomatoes (44.48%), Fresh Vegetables (25.75%), Chicken (13.27%), Onions (9.80%), Eggs (9.52%), Potatoes (6.70%), Beverages (3.08%), Pulse Mash (2.76%), Fresh Fruits (2.29%), Butter (2.07%), Sweetmeat (1.58%), Cooking Oil (1.38%), Mustard Oil (1.33%), Milk Powder (1.20%), Pulse Moong (1.11%) and Milk Fresh (0.86%).

Decreased: Wheat (10.77%), Wheat Flour (4.98%), Sugar (1.54%), Wheat Products (0.95%), Pulse Gram (0.94%), Beans (0.71%), Honey (0.63%), Gram Whole (0.29%) and Besan (0.23%).

NON-FOOD

Increased: Liquified Hydrocarbons (32.94%), Motor Fuels (19.59%), Transport Services (7.87%), Construction Input Items (4.88%), Solid Fuel (3.51%), Woolen Cloth (2.77%), Education (2.75%), Plastic Products (2.14%) and House Rent (1.94%).

Decreased: Recreation & Culture (1.64%), Personal Effects (1.33%) and Electricity Charges (0.71%).

Year-On-Year: Top few commodities which varied from corresponding month of previous year i.e. April, 2025 are given below:

FOOD

Increased: Tomatoes (43.03%), Onions (42.63%), Wheat (42.34%), Wheat Flour (36.04%), Fresh Vegetables (22.17%), Butter (11.29%), Dry Fruits (10.56%), Dessert Preparation (10.52%), Milk Powder (10.14%), Wheat Products (9.83%), Meat (9.36%), Fish (7.19%) and Bakery & Confectionary (6.84%).

Decreased: Potatoes (50.06%), Pulse Gram (17.76%), Besan (16.51%), Gram Whole (16.42%), Sugar (11.75%), Chicken (9.78%), Pulse Masoor (8.22%), Tea (2.82%), Pulse Moong (1.98%), Beans (1.98%), Pulse Mash (1.57%), Condiments & Spices (0.49%) and Honey (0.23%).

NON-FOOD

Increased: Liquified Hydrocarbons (57.67%), Motor Fuels (43.37%), Personal Effects (40.60%), Electricity Charges (33.71%), Dental Services (19.10%), Newspapers (16.67%) Doctor Clinic Fee (14.77%), Construction Input Items (13.79%), Transport Services (13.32%) and Solid Fuel (12.99%).

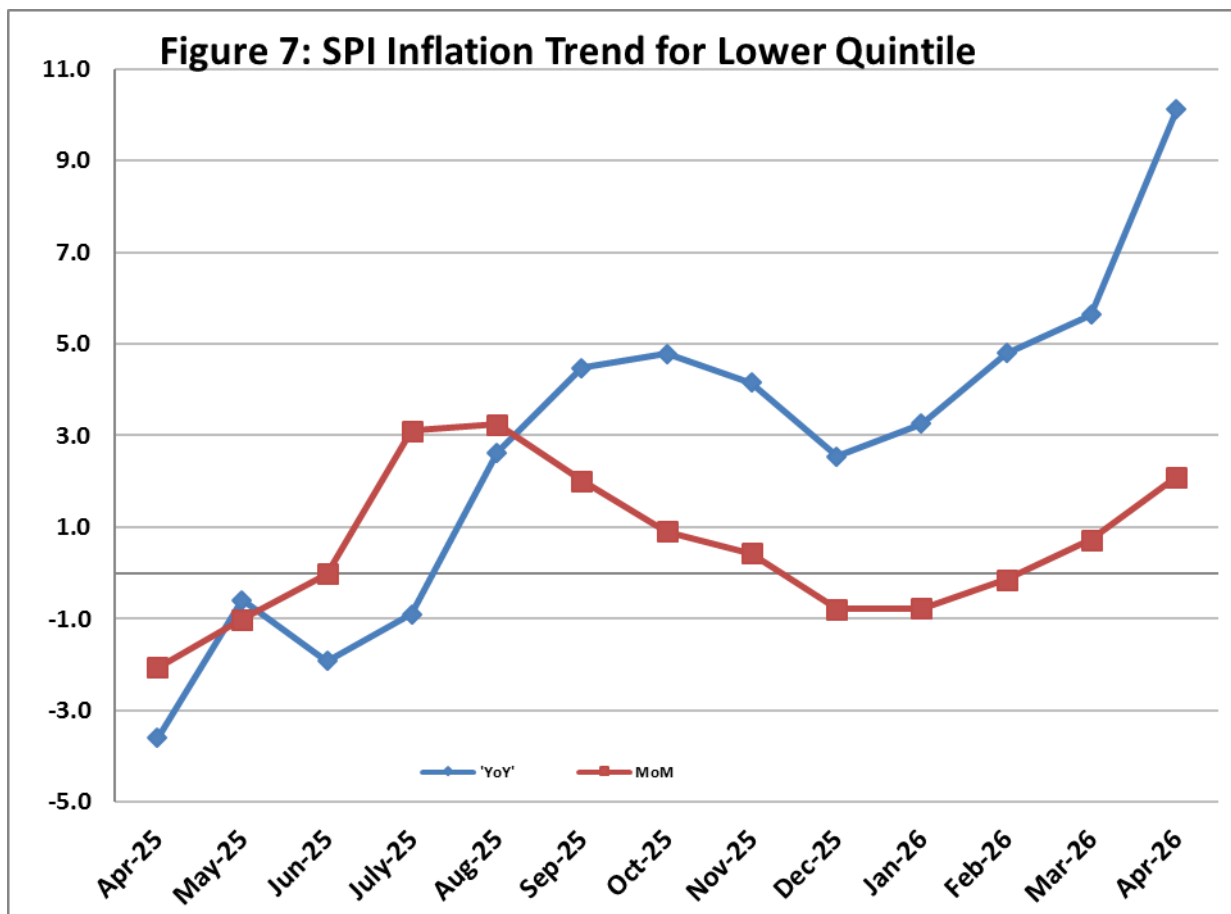
Decreased: Text Books (16.31%).

IV. Sensitive Price Indicator (SPI)

Quintile-wise percentage changes YoY and MoM are given below in Table 4. The series from April 2025 to April 2026 is also graphed below in Figure 7.

Table 4: Sensitive Price Indicator (Base 2015-16)					
Quintiles	Indices			% Change Apr 2026 Over	
	Apr 2026	Mar 2026	Apr 2025	Mar 2026	Apr 2025
1	332.79	326.11	302.38	2.05	10.06
2	337.16	328.92	299.68	2.51	12.51
3	359.26	350.23	323.33	2.58	11.11
4	348.01	337.73	313.48	3.04	11.02
5	354.88	340.17	316.00	4.32	12.30
Combined	353.20	340.87	313.77	3.62	12.57

Table 4.1: Weekly Percentage Change of SPI During April 2026					
Quintiles	% Change over Previous week				
	02-04-2026	09-04-2026	16-04-2026	23-04-2026	30-04-2026
Quintile 1	0.70	-0.17	-0.36	-0.41	0.17
Combined	1.01	-0.11	-0.69	-0.33	0.62



V. Wholesale Price Index

The Wholesale Price Index for **April 2026** increased by **5.07%** over **March 2026** and increased by **13.57%** over the corresponding month of the last year i.e. **April, 2025**. YoY and MoM movements from April, 2025 to April, 2026 are also graphed below in Figure 8.

Table 5: Wholesale Price Index by Group of Commodities (Base 2015-16)

No	Group	Group Weight (%)	Indices			% Change Apr 2026 Over		Impact (In % points) Apr 2026 Over	
			Apr 26	Mar 26	Apr 25	Mar 26	Apr 25	Mar 26	Apr 25
	General	100.00	350.71	333.78	308.80	5.07	13.57	5.07	13.57
1	Agriculture Forestry & Fishery	25.77	280.42	274.02	272.87	2.34	2.77	0.49	0.63
2	Ores/Minerals, Elec., Gas & Water	12.01	372.85	368.50	343.25	1.18	8.62	0.16	1.15
3	Food, Beverages, Tobacco, Textiles & Leather Products	31.11	296.22	294.64	281.03	0.54	5.41	0.15	1.53
	i. Food Products, Beverages & Tobacco	20.07	318.53	316.37	296.41	0.68	7.46	0.13	1.44
	ii. Textiles & Apparels	10.33	260.94	260.38	258.20	0.22	1.06	0.02	0.09
	iii. Leather Products	0.71	179.03	179.03	178.56	0.00	0.26	0.00	0.00
4	Other Transportable Goods	22.40	474.96	413.56	339.38	14.85	39.95	4.12	9.83
5	Metal Product, Machinery & Equipment	8.72	403.22	397.26	388.08	1.50	3.90	0.16	0.43

Main contributors to month-on-month and year-on-year percentage changes are given below and detail is given in **Annexure-C**.

MONTH-ON-MONTH: Top few commodities which varied from previous month are given below:

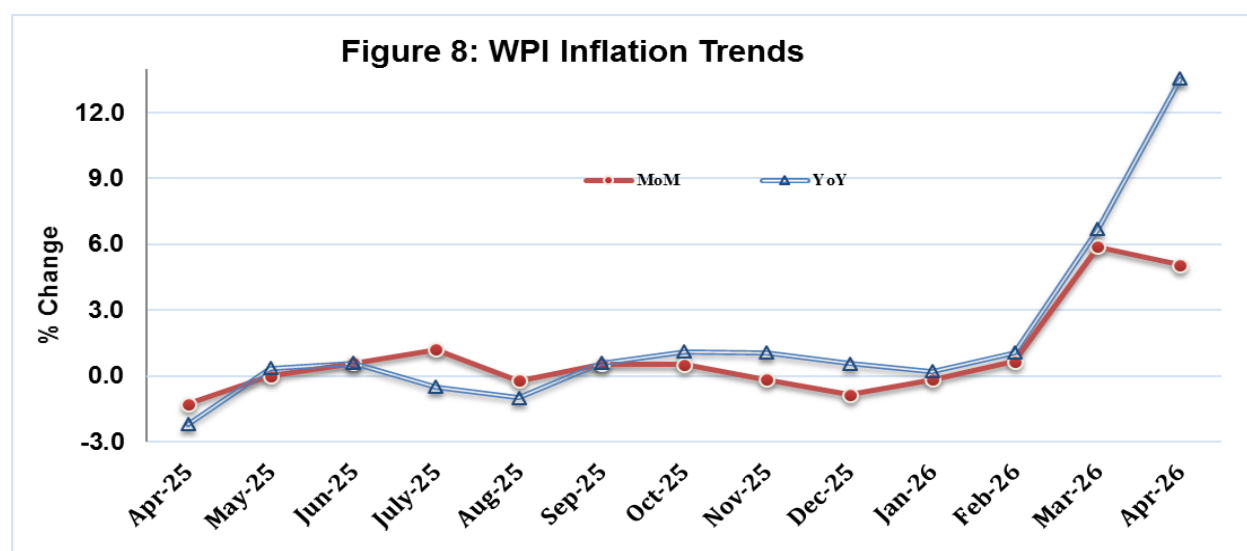
Increased: Vegetables (34.44%), Kerosene Oil (24.93%), Furnace Oil (23.38%), Diesel (22.66%), Motor Spirit (21.32%), Eggs (18.06%), Steel Bar & Sheets (6.57%), Edible Roots / Potatoes (5.92%), Cement (5.25%), Oil Cakes (5.24%), Raw Milk from Bovine Animals (4.96%), Vegetables & Fruit Juice (3.71%), Printing Paper (3.22%), Meat of Animals (3.09%), Fertilizers (2.88%) and Beverages (2.69%).

Decreased: Wheat (11.54%), Millet / Bajra (7.43%), Wheat Flour (6.70%), Fresh Fruits (5.40%), Sorghum / Jowar (2.89%), Maize (1.43%), Sugar Refined (1.22%), Cotton Seeds (0.68%), Electrical Energy (0.55%), Pulses (0.30%) and Ceramics & Sanitary Fixture (0.07%).

YEAR-ON-YEAR: Top few commodities which varied from previous year are given below:

Increased: Kerosene Oil (154.87%), Diesel Oil (92.93%), Sorghum / Jowar (80.55%), Motor Spirit (48.58%), Wheat (43.43%), Furnace Oil (42.32%), Vegetables (36.47%), Wheat Flour (31.19%), Other Food Products (30.95%), Dried Fruits & Nuts (26.76%), Dyeing Material (22.99%), Printing Paper (18.24%), Raw Animal Materials / Wool (18.04%), Woven Fabrics (17.50%), Maize (16.60%), Fuel Wood in Logs (14.45%), Meat of Animals (14.41%), Pesticides (14.04%) and Insecticides (13.45%).

Decreased: Edible Roots / Potatoes (47.43%), Other Cereal Flour (20.66%), Millet / Bajra (13.77%), Pulses (13.29%), Stimulant & Spice Crops (13.19%), Sugar Refined (12.26%), Cotton Seeds (9.54%), Poultry (9.39%), Fibre Crops (6.73%), Other Fabrics (1.91%), Vegetables & Fruit Juice (1.83%), Unmanufactured Tobacco (0.71%) and Soaps & Detergents (0.20%).



Annexure A: CPI (Urban) Index Numbers by Commodity Groups & Commodities (2015-16=100)

Item and Specification	Weight	Index Numbers			% Change in Apr 2026 over	
		Apr 26	Mar 26	Apr 25	Mar 2026	Apr 2025
General	100.0000	289.61	281.87	260.65	+ 2.75	+ 11.11
Food and non-alcoholic Beverages	30.4215	291.71	284.32	271.43	+ 2.60	+ 7.47
01 Wheat	0.6120	285.23	313.60	204.55	- 9.05	+ 39.44
02 Wheat flour	3.0075	271.25	284.79	207.75	- 4.75	+ 30.57
03 Wheat products	0.0936	305.37	308.30	276.39	- 0.95	+ 10.49
04 Besan	0.0830	213.21	214.64	254.37	- 0.67	- 16.18
05 Rice	1.1804	331.65	328.41	310.29	+ 0.99	+ 6.88
06 Bakery and confectionary	0.4770	286.67	279.30	268.10	+ 2.64	+ 6.93
07 Nimco	0.1224	305.73	305.66	298.45	+ 0.02	+ 2.44
08 Meat	2.0411	381.23	371.36	338.94	+ 2.66	+ 12.48
09 Chicken	1.3631	282.84	275.43	324.20	+ 2.69	- 12.76
10 Fish	0.3855	228.18	231.96	208.87	- 1.63	+ 9.24
11 Milk fresh	7.1070	277.27	269.49	262.98	+ 2.89	+ 5.43
12 Milk products	0.6407	282.79	273.12	265.67	+ 3.54	+ 6.44
13 Milk powder	0.3106	332.90	332.39	303.57	+ 0.15	+ 9.66
14 Eggs	0.5083	286.70	250.66	265.99	+ 14.38	+ 7.79
15 Butter	0.0932	498.09	497.52	438.33	+ 0.11	+ 13.63
16 Mustard oil	0.0120	319.15	319.15	312.06	+ 0.00	+ 2.27
17 Cooking oil	1.1016	337.47	337.75	330.79	- 0.08	+ 2.02
18 Vegetable ghee	1.0324	356.80	356.70	349.31	+ 0.03	+ 2.14
19 Dry fruits	0.3299	323.85	323.41	297.10	+ 0.14	+ 9.00
20 Fresh fruits	1.4363	309.51	312.92	290.97	- 1.09	+ 6.37
21 Pulse masoor	0.1624	177.12	178.33	200.35	- 0.68	- 11.59
22 Pulse moong	0.1697	239.13	238.39	244.94	+ 0.31	- 2.37
23 Pulse mash	0.1152	203.53	198.35	192.93	+ 2.61	+ 5.49
24 Pulse gram	0.1660	208.43	208.59	249.53	- 0.08	- 16.47
25 Gram whole	0.0912	236.78	236.36	277.43	+ 0.18	- 14.65
26 Beans	0.0408	346.84	349.82	373.53	- 0.85	- 7.15
27 Potatoes	0.4496	156.68	150.03	250.54	+ 4.43	- 37.46
28 Onions	0.5928	179.68	164.49	126.77	+ 9.23	+ 41.74
29 Tomatoes	0.3459	241.18	153.52	137.53	+ 57.10	+ 75.37
30 Fresh vegetables	1.5306	272.81	193.93	217.11	+ 40.67	+ 25.66
31 Sugar	1.1130	240.37	242.77	270.06	- 0.99	- 10.99
32 Gur	0.0379	260.57	263.02	246.15	- 0.93	+ 5.86
33 Honey	0.1017	222.71	222.56	221.90	+ 0.07	+ 0.37
34 Sweetmeat	0.3535	344.90	343.57	325.40	+ 0.39	+ 5.99
35 Ice cream	0.1044	210.48	208.30	199.45	+ 1.05	+ 5.53
36 Condiments and Spices	1.3340	382.79	381.87	354.30	+ 0.24	+ 8.04
37 Dessert preparation	0.0419	301.71	300.57	271.09	+ 0.38	+ 11.30
38 Tea	0.8427	273.67	273.67	275.78	+ 0.00	- 0.77
39 Beverages	0.8906	267.99	257.52	258.89	+ 4.07	+ 3.52
Alcoholic Beverages, Tobacco	0.8540	426.88	426.28	417.98	+ 0.14	+ 2.13
40 Cigarettes	0.7167	415.56	414.97	409.98	+ 0.14	+ 1.36
41 Pan prepared	0.1373	486.00	485.35	459.74	+ 0.13	+ 5.71
Clothing and footwear	8.0096	264.87	262.74	251.04	+ 0.81	+ 5.51
42 Cotton cloth	2.2227	305.69	303.09	288.37	+ 0.86	+ 6.01
43 Woollen cloth	0.8361	264.21	260.04	242.23	+ 1.60	+ 9.07
44 Readymade garments	1.3196	230.64	228.64	218.67	+ 0.87	+ 5.47
45 Woollen readymade garments	0.4307	273.83	273.83	256.71	+ 0.00	+ 6.67
46 Tailoring	1.0741	256.23	254.08	234.43	+ 0.85	+ 9.30
47 Hosiery	0.4070	246.85	242.82	238.20	+ 1.66	+ 3.63
48 Dupatta	0.1713	210.99	208.81	204.13	+ 1.04	+ 3.36
49 Cleaning and laundering	0.0665	293.55	289.51	266.56	+ 1.40	+ 10.13
50 Footware	1.4816	248.03	247.65	247.48	+ 0.15	+ 0.22
Housing, water, Elec., Gas and Other Fuels	27.0332	278.36	273.89	239.51	+ 1.63	+ 16.22
51 House rent	19.2558	180.88	178.39	170.49	+ 1.40	+ 6.09
52 Construction input items	0.3765	278.63	273.08	265.59	+ 2.03	+ 4.91
53 Construction wage rates	0.2025	236.86	236.79	224.87	+ 0.03	+ 5.33
54 Water supply	0.5269	246.74	245.91	228.99	+ 0.34	+ 7.75
55 Garbage collection	0.1064	268.46	268.46	262.68	+ 0.00	+ 2.20
56 Electricity charges	4.5562	301.82	303.97	225.72	- 0.71	+ 33.71
57 Gas charges	1.0807	1817.96	1817.96	1479.08	+ 0.00	+ 22.91
58 Liquefied Hydrocarbons	0.5064	564.16	407.82	345.34	+ 38.34	+ 63.36

Annexure A: CPI (Urban) Index Numbers by Commodity Groups & Commodities (2015-16=100)

Item and Specification	Weight	Index Numbers			% Change in Apr 2026 over	
		Apr 26	Mar 26	Apr 25	Mar 2026	Apr 2025
59 Solid Fuel	0.4218	249.04	247.07	227.08	+ 0.80	+ 9.67
<i>Furnishing and household equipments</i>	4.0937	276.49	274.82	267.22	+ 0.61	+ 3.47
60 Furniture and furnishing	0.4750	269.47	267.40	259.43	+ 0.77	+ 3.87
61 Carpets	0.0308	157.91	158.14	150.80	- 0.15	+ 4.71
62 Household textiles	0.3420	216.50	215.92	209.12	+ 0.27	+ 3.53
63 Household equipments	1.0032	283.40	280.78	270.94	+ 0.93	+ 4.60
64 Plastic products	0.0536	238.80	236.80	223.33	+ 0.84	+ 6.93
65 Major tools & equipments	0.0084	269.92	266.40	243.43	+ 1.32	+ 10.88
66 Washing soap/detergents/match	1.4112	326.86	325.27	322.31	+ 0.49	+ 1.41
67 Household servant	0.7695	213.55	212.67	199.94	+ 0.41	+ 6.81
<i>Health</i>	2.3098	290.64	289.27	273.81	+ 0.47	+ 6.15
68 Drugs and medicines	1.0735	311.93	311.69	293.06	+ 0.08	+ 6.44
69 Therapeutic Appliances and Equipments	0.0054	157.25	157.09	155.03	+ 0.10	+ 1.43
70 Doctor (MBBS) clinic fee	0.4044	365.70	365.39	345.42	+ 0.08	+ 5.87
71 Dental services	0.0156	239.09	238.75	225.90	+ 0.14	+ 5.84
72 Medical tests	0.2367	230.51	223.67	214.72	+ 3.06	+ 7.35
73 Hospitals services	0.5742	225.41	223.41	214.16	+ 0.90	+ 5.25
<i>Transport</i>	6.1368	398.87	340.79	301.84	+ 17.04	+ 32.15
74 Motor vehicles	0.8097	267.71	267.63	259.38	+ 0.03	+ 3.21
75 Motor vehicle accessories	0.1941	273.72	272.82	263.81	+ 0.33	+ 3.76
76 Motor fuel	2.9088	488.73	413.40	348.56	+ 18.22	+ 40.21
77 Mechanical services	0.4290	254.70	254.09	237.51	+ 0.24	+ 7.24
78 Motor vehicle tax	0.0482	399.23	399.23	399.23	+ 0.00	+ 0.00
79 Transport services	1.7470	359.34	281.05	261.06	+ 27.86	+ 37.65
<i>Communication</i>	2.3536	139.47	139.25	138.39	+ 0.16	+ 0.78
80 Postal services	0.0190	269.29	250.41	217.79	+ 7.54	+ 23.65
81 Communication apparatus	0.4524	191.96	191.56	188.51	+ 0.21	+ 1.83
82 Communication Services	1.8822	125.55	125.55	125.55	+ 0.00	+ 0.00
<i>Recreation and culture</i>	1.7301	249.80	249.70	261.43	+ 0.04	- 4.45
83 Recreation and culture	0.6478	157.71	157.66	155.01	+ 0.03	+ 1.74
84 Text books	0.6655	297.49	297.49	335.43	+ 0.00	- 11.31
85 Newspapers	0.0716	242.82	242.82	216.94	+ 0.00	+ 11.93
86 stationery	0.3452	332.11	331.73	327.71	+ 0.11	+ 1.34
<i>Education</i>	4.8807	227.74	221.05	211.42	+ 3.03	+ 7.72
87 Education	4.8807	227.74	221.05	211.42	+ 3.03	+ 7.72
<i>Restaurants and hotels</i>	7.4050	296.83	294.18	282.36	+ 0.90	+ 5.12
88 Readymade food	5.5235	303.87	300.65	289.63	+ 1.07	+ 4.92
89 Marriage Hall Charges	1.7514	282.73	281.71	266.94	+ 0.36	+ 5.92
90 Accommodation Services	0.1301	187.71	187.35	181.26	+ 0.19	+ 3.56
<i>Misc. goods and services</i>	4.7720	367.68	369.43	311.43	- 0.47	+ 18.06
91 Personal Grooming Services	0.8001	278.53	276.33	261.24	+ 0.80	+ 6.62
92 Electrical Appliances for Per	0.0465	197.16	196.81	190.18	+ 0.18	+ 3.67
93 Appliances/Articles/Products	2.9807	298.15	296.60	279.42	+ 0.52	+ 6.70
94 Personal Effects n.e.c.	0.9447	670.96	686.55	460.92	- 2.27	+ 45.57

Annexure B: CPI (Rural) Index Numbers by Commodity Groups & Commodities (2015-16=100)

Item and Specification	Weight	Index Numbers			% Change in Apr 2026 over	
		Apr 26	Mar 26	Apr 25	Mar 2026	Apr 2025
General	100.0000	297.63	291.55	269.20	+ 2.09	+ 10.56
Food and non-alcoholic Beverages	40.8668	295.32	292.61	273.94	+ 0.93	+ 7.80
01 Wheat	3.4736	296.63	332.45	208.40	- 10.77	+ 42.34
02 Wheat Flour	3.4297	297.15	312.72	218.43	- 4.98	+ 36.04
03 Wheat Products	0.1068	309.77	312.73	282.05	- 0.95	+ 9.83
04 Besan	0.0728	229.79	230.32	275.23	- 0.23	- 16.51
05 Rice	1.5501	428.68	428.17	413.30	+ 0.12	+ 3.72
06 Bakery and Confectionary	0.3702	331.12	328.46	309.93	+ 0.81	+ 6.84
07 Nimco	0.0774	320.17	317.55	302.72	+ 0.83	+ 5.76
08 Meat	1.7146	392.93	391.12	359.31	+ 0.46	+ 9.36
09 Chicken	1.4641	314.26	277.45	348.34	+ 13.27	- 9.78
10 Fish	0.2640	245.26	244.96	228.81	+ 0.12	+ 7.19
11 Milk fresh	10.3803	276.04	273.68	260.88	+ 0.86	+ 5.81
12 Milk products	0.9624	268.64	267.22	259.94	+ 0.53	+ 3.35
13 Milk powder	0.1062	305.00	301.39	276.91	+ 1.20	+ 10.14
14 Eggs	0.5665	272.57	248.87	259.13	+ 9.52	+ 5.19
15 Butter	0.3333	342.32	335.38	307.58	+ 2.07	+ 11.29
16 Mustard oil	0.0136	344.07	339.54	334.59	+ 1.33	+ 2.83
17 Cooking oil	0.6011	381.00	375.81	368.61	+ 1.38	+ 3.36
18 Vegetable ghee	2.3764	396.25	394.06	381.61	+ 0.56	+ 3.84
19 Dry fruits	0.2496	400.06	397.58	361.84	+ 0.62	+ 10.56
20 Fresh fruits	1.4505	332.30	324.86	317.65	+ 2.29	+ 4.61
21 Pulse Masoor	0.2076	204.59	203.77	222.91	+ 0.40	- 8.22
22 Pulse Moong	0.2510	264.41	261.51	269.76	+ 1.11	- 1.98
23 Pulse Mash	0.1465	204.21	198.73	207.46	+ 2.76	- 1.57
24 Pulse Gram	0.2751	213.56	215.59	259.67	- 0.94	- 17.76
25 Gram Whole	0.1116	251.77	252.50	301.25	- 0.29	- 16.42
26 Beans	0.0896	399.45	402.31	407.51	- 0.71	- 1.98
27 Potatoes	0.7437	135.17	126.68	270.68	+ 6.70	- 50.06
28 Onions	0.8965	172.99	157.55	121.29	+ 9.80	+ 42.63
29 Tomatoes	0.5069	211.44	146.35	147.83	+ 44.48	+ 43.03
30 Fresh Vegetables	2.0947	265.98	211.51	217.71	+ 25.75	+ 22.17
31 Sugar	2.0296	241.38	245.15	273.52	- 1.54	- 11.75
32 Gur	0.1522	256.92	255.80	242.66	+ 0.44	+ 5.88
33 Honey	0.0296	226.02	227.46	226.54	- 0.63	- 0.23
34 Sweetmeat	0.3967	310.35	305.52	293.18	+ 1.58	+ 5.86
35 Ice Cream	0.0568	211.51	204.64	199.34	+ 3.36	+ 6.11
36 Condiments and Spices	1.4919	293.02	292.48	294.45	+ 0.18	- 0.49
37 Dessert Preparation	0.0133	296.76	296.76	268.52	+ 0.00	+ 10.52
38 Tea	1.2566	271.09	271.09	278.96	+ 0.00	- 2.82
39 Beverages	0.5537	258.55	250.82	250.64	+ 3.08	+ 3.16
Alcoholic Beverages, Tobacco	1.2786	379.18	378.34	372.13	+ 0.22	+ 1.89
40 Cigarettes	1.2364	379.01	378.14	372.29	+ 0.23	+ 1.81
41 Pan Prepared	0.0422	384.22	384.22	367.53	+ 0.00	+ 4.54
Clothing and footwear	9.4826	290.63	288.37	271.57	+ 0.78	+ 7.02
42 Cotton Cloth	2.8381	315.87	313.39	299.24	+ 0.79	+ 5.56
43 Woollen Cloth	1.0959	285.00	277.33	255.94	+ 2.77	+ 11.35
44 Readymade Garments	1.1345	267.44	265.21	248.82	+ 0.84	+ 7.48
45 Woollen Readymade Garments	0.5401	334.48	334.48	309.66	+ 0.00	+ 8.02
46 Tailoring	1.2999	277.55	276.25	259.23	+ 0.47	+ 7.07
47 Hosiery	0.4322	360.95	360.53	347.31	+ 0.12	+ 3.93
48 Dupatta	0.2078	265.39	262.68	250.18	+ 1.03	+ 6.08
49 Cleaning and Laundering	0.0176	267.84	267.84	258.34	+ 0.00	+ 3.68
50 Footware	1.9165	253.81	253.29	235.97	+ 0.21	+ 7.56
Housing, water, Elec., Gas and Other Fuels	18.4853	260.74	249.88	220.34	+ 4.35	+ 18.34
51 House Rent	8.6110	192.47	188.80	178.31	+ 1.94	+ 7.94
52 Construction Input Items	0.6306	288.14	274.74	253.23	+ 4.88	+ 13.79
53 Construction Wage Rates	0.2526	256.00	255.80	241.78	+ 0.08	+ 5.88
54 Water Supply	0.0645	325.72	325.72	311.91	+ 0.00	+ 4.43
55 Garbage Collection	0.0080	204.36	204.36	204.36	+ 0.00	+ 0.00
56 Electricity Charges	3.4431	301.82	303.97	225.72	- 0.71	+ 33.71
57 Liquefied Hydrocarbons	0.9994	491.63	369.80	311.80	+ 32.94	+ 57.67
58 Solid Fuel	4.4761	304.50	294.18	269.50	+ 3.51	+ 12.99

Annexure B: CPI (Rural) Index Numbers by Commodity Groups & Commodities (2015-16=100)

Item and Specification	Weight	Index Numbers			% Change in Apr 2026 over			
		Apr 26	Mar 26	Apr 25	Mar 2026	Apr 2025		
<i>Furnishing and household equipments</i>	4.1031	304.56	303.19	292.05	+	0.45	+	4.28
59 Furniture and Furnishing	0.5786	302.76	301.98	285.75	+	0.26	+	5.95
60 Household Textiles	0.4382	262.22	262.22	241.87	+	0.00	+	8.41
61 Household Equipments	1.2774	303.63	301.39	290.96	+	0.74	+	4.35
62 Plastic Products	0.0776	332.59	325.63	296.38	+	2.14	+	12.22
63 Major Tools and Equipments	0.0324	255.51	255.51	242.21	+	0.00	+	5.49
64 Washing Soaps, Detergents and	1.6989	316.45	315.40	308.72	+	0.33	+	2.50
<i>Health</i>	3.5141	289.45	289.05	267.95	+	0.14	+	8.02
65 Drugs and Medicines	1.5792	335.62	335.58	318.52	+	0.01	+	5.37
66 Doctor Clinic Fee	0.5128	348.84	346.60	303.95	+	0.65	+	14.77
67 Dental Services	0.0181	268.29	264.76	225.27	+	1.33	+	19.10
68 Medical Tests	0.3967	248.01	248.01	227.82	+	0.00	+	8.86
69 Hospitals Services	1.0073	203.52	203.42	186.91	+	0.05	+	8.89
<i>Transport</i>	5.5580	401.07	355.04	317.59	+	12.96	+	26.29
70 Motor Vehicles	0.7305	194.84	194.82	193.17	+	0.01	+	0.86
71 Motor Vehicles Accessories	0.1572	276.26	276.15	270.90	+	0.04	+	1.98
72 Motor Fuels	2.4932	501.05	418.98	349.49	+	19.59	+	43.37
73 Mechanical Services	0.3645	237.30	237.30	232.83	+	0.00	+	1.92
74 Motor Vehicle Tax	0.0174	342.03	342.03	342.03	+	0.00	+	0.00
75 Transport Services	1.7952	390.90	362.37	344.96	+	7.87	+	13.32
<i>Communication</i>	1.9940	130.13	130.13	128.91	+	0.00	+	0.95
76 Postal Services	0.0070	179.32	179.32	179.32	+	0.00	+	0.00
77 Communication Apparatus	0.3362	170.22	170.22	162.99	+	0.00	+	4.44
78 Communication Services	1.6508	121.76	121.76	121.76	+	0.00	+	0.00
<i>Recreation and culture</i>	1.3764	293.22	294.46	312.12	-	0.42	-	6.06
79 Recreation and Culture	0.4763	255.43	259.70	254.10	-	1.64	+	0.52
80 Text Books	0.5047	305.32	305.32	364.82	+	0.00	-	16.31
81 Newspapers	0.0230	282.94	282.94	242.52	+	0.00	+	16.67
82 Stationery	0.3724	325.79	324.92	319.21	+	0.27	+	2.06
<i>Education</i>	2.1342	262.83	255.80	239.01	+	2.75	+	9.97
83 Education	2.1342	262.83	255.80	239.01	+	2.75	+	9.97
<i>Restaurants and hotels</i>	6.1895	310.03	308.76	293.73	+	0.41	+	5.55
84 Readymade Food	3.8001	336.03	334.37	320.73	+	0.50	+	4.77
85 Marriage Hall Charges	2.2525	278.10	277.43	259.14	+	0.24	+	7.32
86 Accommodation Services	0.1369	113.48	113.40	113.40	+	0.07	+	0.07
<i>Misc. goods and services</i>	5.0174	397.53	399.47	335.00	-	0.49	+	18.67
87 Personal Grooming Services	1.5363	340.49	340.49	309.59	+	0.00	+	9.98
88 Appliances/Articles/Products	2.2746	272.88	272.13	263.83	+	0.28	+	3.43
89 Personal Effects n.e.c.	1.2065	705.16	714.64	501.53	-	1.33	+	40.60

Annexure C: Wholesale Price Indices by Major Groups & Commodities (2015-16=100)

Item and Specification	Weight	Index Numbers			% Change in Apr 2026 over			
		Apr 26	Mar 26	Apr 25	Mar 2026	Apr 2025		
General	100.0000	350.71	333.78	308.80	+	5.07	+	13.57
Agriculture Forestry & Fishery	25.7674	280.42	274.02	272.87	+	2.34	+	2.77
001 Wheat	0.6297	271.19	306.58	189.07	-	11.54	+	43.43
002 Maize	0.6764	328.61	333.38	281.83	-	1.43	+	16.60
003 Rice	2.4413	318.58	316.18	313.94	+	0.76	+	1.48
004 Sorghum / Jowar	0.0214	510.88	526.10	282.96	-	2.89	+	<u>80.55</u>
005 Millet / Bajra	0.0374	290.41	313.72	336.78	-	7.43	-	13.77
006 Vegetables	1.2441	280.66	208.77	205.66	+	34.44	+	36.47
007 Fresh Fruits	1.5144	331.24	350.16	314.42	-	5.40	+	5.35
008 Dry Fruits	0.2478	386.46	385.10	370.31	+	0.35	+	4.36
009 Cotton Seeds	1.1511	179.81	181.04	198.78	-	0.68	-	9.54
010 Other Oil Seeds	0.0722	278.08	277.36	264.09	+	0.26	+	5.30
011 Edible Roots / Potatoes	0.2540	153.78	145.18	292.52	+	5.92	-	47.43
012 Stimulant & Spice Crops	0.1634	302.34	301.57	348.29	+	0.26	-	13.19
013 Pulses	0.4901	234.21	234.91	270.11	-	0.30	-	13.29
014 Sugar Crops	1.0725	355.12	346.42	352.33	+	2.51	+	0.79
015 Fibre Crops	5.3169	296.11	296.04	317.47	+	0.02	-	6.73
016 Unmanufactured Tobacco	0.0742	567.32	563.64	571.39	+	0.65	-	0.71
017 Poultry	0.5633	276.55	273.50	305.22	+	1.12	-	9.39
018 Raw Milk from Bovine Animals	7.0279	270.23	257.45	251.70	+	4.96	+	7.36
019 Eggs	0.5034	287.00	243.10	258.49	+	18.06	+	11.03
020 Raw Animal Materials / Wool	0.0351	300.17	295.22	254.30	+	1.68	+	18.04
021 Hides, Skins & Fur Skins, Raw	0.4834	60.14	59.98	59.39	+	0.27	+	1.26
022 Fuel Wood in Logs	0.0179	245.08	244.23	214.14	+	0.35	+	14.45
023 Fish Live Fresh or Chilled	1.7295	240.20	240.20	219.94	+	0.00	+	9.21
Ores/Minerals, Elec., Gas & Water	12.0069	372.85	368.50	343.25	+	1.18	+	8.62
024 Coal not Agglomerated	0.7508	219.17	219.17	219.17	+	0.00	+	0.00
025 Natural Gas Liquefied	5.7065	462.47	451.82	419.81	+	2.36	+	10.16
026 Salt & Pure Sodium Chloride	0.0584	443.89	432.51	407.96	+	2.63	+	8.81
027 Electrical Energy	5.4912	299.98	301.65	279.96	-	0.55	+	7.15
Food, Beverages, Tobacco, Textile	31.1122	296.22	294.64	281.03	+	0.54	+	5.41
Food Products, Beverages & Tobacco	20.0718	318.53	316.37	296.41	+	0.68	+	7.46
028 Meat of Animals	3.4559	380.56	369.14	332.63	+	3.09	+	14.41
029 Vegetables & Fruit Juice	0.0058	253.73	244.66	258.46	+	3.71	-	1.83
030 Dried Fruits & Nuts	0.1733	498.08	496.13	392.93	+	0.39	+	26.76
031 Fruit Juices	0.3880	291.06	290.69	281.58	+	0.13	+	3.37
032 Vegetable Oils Refined	1.9242	303.70	302.90	283.07	+	0.26	+	7.29
033 Vegetable Ghee	1.5632	379.26	374.46	366.29	+	1.28	+	3.54
034 Oil Cakes	0.9611	275.73	261.99	257.71	+	5.24	+	6.99
035 Processed Liquid Milk	4.4437	338.91	333.03	320.55	+	1.77	+	5.73
036 Milk & Cream in Solid Form	0.0316	320.39	316.55	291.94	+	1.21	+	9.75
037 Ice Cream	0.0047	209.56	209.31	200.56	+	0.12	+	4.49
038 Dairy Products N.E.C	0.0117	343.55	343.34	326.75	+	0.06	+	5.14
039 Wheat Flour	2.3034	270.86	290.32	206.47	-	6.70	+	31.19
040 Other Cereal Flour	0.0604	218.05	217.62	274.84	+	0.20	-	20.66
041 Sugar Refined	1.7975	238.98	241.94	272.37	-	1.22	-	12.26
042 Chocolate	0.0139	144.39	144.39	143.40	+	0.00	+	0.69
043 Sugar Confectionary	0.0738	317.00	317.00	314.87	+	0.00	+	0.68
044 Coffee & Tea	0.7303	270.52	269.94	269.91	+	0.21	+	0.23
045 Spices	0.1449	338.27	338.13	301.74	+	0.04	+	12.11
046 Other Food Products	0.0336	364.96	364.90	278.71	+	0.02	+	30.95
047 Mineral Water	0.0207	217.16	213.58	206.66	+	1.68	+	5.08
048 Beverages	0.6303	265.36	258.40	261.39	+	2.69	+	1.52
049 Tobacco Products	1.2998	301.20	301.20	301.20	+	0.00	+	0.00
Textiles & Apparels	10.3289	260.94	260.38	258.20	+	0.22	+	1.06
050 Cotton Yarn	5.2491	239.61	239.61	239.61	+	0.00	+	0.00
051 Nylon Yarn	0.1719	95.24	95.24	95.24	+	0.00	+	0.00
052 Blended Yarn	0.1689	148.12	148.12	148.12	+	0.00	+	0.00
053 Woven Fabrics	0.0128	307.27	307.27	261.51	+	0.00	+	17.50
054 Cotton Fabrics	0.6343	378.77	378.63	341.88	+	0.04	+	10.79
055 Other Fabrics	1.1016	274.96	274.50	280.32	+	0.17	-	1.91
056 Silk & Reyon Fabrics	0.7350	403.68	403.64	400.75	+	0.01	+	0.73
057 Towels	0.1235	209.23	205.34	204.56	+	1.89	+	2.28

Annexure C: Wholesale Price Indices by Major Groups & Commodities (2015-16=100)

Item and Specification	Weight	Index Numbers			% Change in Apr 2026 over	
		Apr 26	Mar 26	Apr 25	Mar 2026	Apr 2025
058 Blankets	0.0029	168.88	168.88	158.72	+ 0.00	+ 6.40
059 Bed Sheets	0.0913	222.66	222.66	203.39	+ 0.00	+ 9.47
060 Quilts	0.0019	243.70	243.70	243.00	+ 0.00	+ 0.29
061 Woollen Carpets	0.0383	184.00	184.00	177.15	+ 0.00	+ 3.87
062 Synthetic Carpets	0.0566	160.49	160.49	156.16	+ 0.00	+ 2.77
063 Hosiery Products	0.8832	217.84	214.46	214.17	+ 1.58	+ 1.71
064 Readymade Garments	1.0576	280.53	278.92	278.68	+ 0.58	+ 0.66
Leather Products	0.7115	179.03	179.03	178.56	+ 0.00	+ 0.26
065 Leather Without Hair	0.2973	175.98	175.98	174.84	+ 0.00	+ 0.65
066 Other Leather N.E.C	0.2567	141.18	141.18	141.18	+ 0.00	+ 0.00
067 Footwears	0.1575	246.48	246.48	246.48	+ 0.00	+ 0.00
Other Transportable Goods	22.3979	474.96	413.56	339.38	+ 14.85	+ 39.95
068 Timber	0.0165	247.37	247.16	237.92	+ 0.08	+ 3.97
069 Printing Paper	0.4279	305.81	296.27	258.64	+ 3.22	+ 18.24
070 Hard Board	0.1579	261.62	261.62	261.62	+ 0.00	+ 0.00
071 Motor Spirit	1.6268	536.00	441.79	360.75	+ 21.32	+ 48.58
072 Diesel Oil	5.4849	629.56	513.26	326.31	+ 22.66	+ 92.93
073 Kerosene Oil	0.2151	846.62	677.68	332.18	+ 24.93	+ 154.87
074 Furnace Oil	3.2664	766.10	620.95	538.29	+ 23.38	+ 42.32
075 Mobil Oil	0.7114	254.69	251.76	251.76	+ 1.16	+ 1.16
076 Chemicals	1.7720	301.95	295.20	272.25	+ 2.29	+ 10.91
077 Dyeing Material	0.1539	335.16	335.16	272.52	+ 0.00	+ 22.99
078 Fertilizers	2.8657	292.30	284.13	270.18	+ 2.88	+ 8.19
079 Pesticides	0.2763	242.14	241.86	212.32	+ 0.12	+ 14.04
080 Insecticides	0.1276	197.82	197.82	174.37	+ 0.00	+ 13.45
081 Paints & Varnishes	0.1916	279.10	279.10	278.01	+ 0.00	+ 0.39
082 Medicines	1.1428	393.79	393.07	380.29	+ 0.18	+ 3.55
083 Soaps & Detergents	0.8168	240.24	240.21	240.71	+ 0.01	- 0.20
084 Auto Tyres	0.2703	272.37	269.10	262.58	+ 1.22	+ 3.73
085 Plastic Products	0.4550	218.10	216.42	208.99	+ 0.78	+ 4.36
086 Glass sheets	0.2089	401.67	395.53	398.71	+ 1.55	+ 0.74
087 Other Glass Articles	0.1635	242.48	242.48	215.98	+ 0.00	+ 12.27
088 Ceramics & Sanitary Fixture	0.0244	244.86	245.03	228.90	- 0.07	+ 6.97
089 Bricks, Blocks & Tiles	0.1566	226.33	220.49	206.36	+ 2.65	+ 9.68
090 Cement	1.8145	301.13	286.11	277.82	+ 5.25	+ 8.39
091 Bed Foam	0.0006	331.97	329.14	329.62	+ 0.86	+ 0.71
092 Matches	0.0505	3375.83	3375.83	3348.99	+ 0.00	+ 0.80
Metal Product, Machinery & Equipments	8.7156	403.22	397.26	388.08	+ 1.50	+ 3.90
093 Steel Bar & Sheets	1.4615	337.82	317.00	312.61	+ 6.57	+ 8.06
094 Pipe Fittings	0.0780	511.20	511.16	485.91	+ 0.01	+ 5.20
095 Steel Products	0.3879	285.42	285.42	277.29	+ 0.00	+ 2.93
096 Engines & Motors	0.0046	242.26	242.26	216.19	+ 0.00	+ 12.06
097 Vacuum Pumps	0.0155	107.56	107.56	107.56	+ 0.00	+ 0.00
098 Air Conditioners	0.0049	310.77	310.77	309.58	+ 0.00	+ 0.38
099 Cultivators	0.0551	361.67	361.67	361.67	+ 0.00	+ 0.00
100 Chuff Cutter	0.1293	519.00	519.00	519.00	+ 0.00	+ 0.00
101 Tractors	0.0028	348.19	348.19	320.14	+ 0.00	+ 8.76
102 Lathe Machines	0.0525	544.70	531.22	523.49	+ 2.54	+ 4.05
103 Concrete Mixture	0.0107	456.13	450.82	426.37	+ 1.18	+ 6.98
104 Fridge,WashM,SewM,Fans,Iron	1.1645	316.69	316.18	309.33	+ 0.16	+ 2.38
105 Electric Wires	0.0912	403.73	403.73	364.96	+ 0.00	+ 10.62
106 Lighting Equipments	1.4431	757.41	757.41	757.41	+ 0.00	+ 0.00
107 Radio & Television	0.1843	191.49	191.49	190.54	+ 0.00	+ 0.50
108 Motor Vehicles	0.0244	271.56	271.56	268.12	+ 0.00	+ 1.28
109 Motorcycles	0.2570	271.57	271.57	263.76	+ 0.00	+ 2.96
110 Bicycles	3.3483	338.65	332.61	316.55	+ 1.82	+ 6.98
