



CONTRACEPTIVE PERFORMANCE REPORT

OCTOBER – DECEMBER, 2011

***GOVERNMENT OF PAKISTAN
STATISTICS DIVISION
PAKISTAN BUREAU OF STATISTICS
ISLAMABAD***

GENISIS OF THE REPORT

The Contraceptive Performance Report owes to continuous efforts of the following Pakistan Bureau of Statistics (PBS) Officers/Officials:

1. Dr. Bahrawar Jan, Deputy Director General
2. Ms. Rizwana Siddique, Chief Statistical Officer
3. Syed Adil Hashmi, Statistical Officer
4. Mr. Arshad Ahmad Khan, Research Supervisor
5. Mr. Mahmood-ul-Hasan, Statistical Investigator
6. Mr. Sarfraz Ahmad, Statistical Assistant
7. Mr. Muhammad Qadeer Anwar, Data Entry Operator

PREFACE

Pakistan Bureau of Statistics (PBS) is a prime official agency of Pakistan which is responsible for collection, compilation and dissemination of reliable and timely statistical information to the policy makers, planners and researchers. It publishes a variety of reports, based on primary and secondary data, especially on economics and social aspects of the country.

The Quarterly Contraceptive Performance Report (October – December, 2011) encompasses the contraceptive performance at all service delivery points, under Population Welfare Programme in the country. The Pakistan Bureau of Statistics (PBS) aims at ensuring nationwide coverage of Family Planning/Reproductive Health activities. The quarterly contraceptive performance report is an important intervention to gauge outlet-wise, source-wise and method-wise contraceptive progress and observe the direction and track/trend for future Contraceptive Requirement and Distribution (CRD) in the country.

Above all, I am grateful to Provincial Population Welfare Departments (PPWDs), the District Population Welfare Office, Islamabad Capital Territory (ICT), Population Welfare Department Azad Jammu & Kashmir (AJK), Population Welfare Programme Gilgit-Baltistan(GB), Social Marketing of Contraceptive (SMC) and other stakeholders for their support in this important input of contraceptive usage.

I hope, the user of the report would be able to learn about important facts on contraceptive activities and will assist in the field of population and development. Comments and suggestions for improvement of Contraceptive Performance Report would be highly appreciated.

Arif Mahmood Cheema
Director General
Pakistan Bureau of Statistics
Statistics Division
Government of Pakistan

CONTENTS

	Page No.
PREFACE	iii
CONTENTS	v
SUMMARY	vii
INTRODUCTION	1
Methodology	1
Concept and Definitions	2
Data Sources	3
RESULTS AND DISCUSSION	4
1. Source -wise Contraceptive Performance in terms of Couple Years of Protection	4
2. Method- wise Contraceptives Performance in terms of Couple Years of Protection	4
3. Source and Method-wise Performance of Contraceptive Delivery Services	5
4. Outlet-wise Performance in terms of Couple Years of Protection	6
5. Comparative outlet-wise Contraceptive Performance for Delivery Services	6-8
<i>i. Family Welfare Centers (FWCs)</i>	7
<i>ii. Reproductive Health Services Centers (RHS-A)</i>	8
<i>iii. Reproductive Health Services Centers (RHS-B)</i>	8
<i>iv. Mobile Service Units (MSUs)</i>	8
<i>v. Provincial Line Departments (PLDs) including outlets of Health Department</i>	8
<i>vi. Registered Medical Practitioners (RMPs)</i>	8
<i>vii. Hakeems and Homoeopaths (H&H)</i>	9
<i>viii. Male Mobilizer</i>	9
<i>ix. Non-Governmental Organization (NGO)-FPAP</i>	9
<i>x. Azad Jammu & Kashmir (AJK)</i>	9
<i>xi. Gilgit – Baltistan (GB)</i>	9
<i>xii. Federally Administered Tribal Areas(FATA)</i>	9
6. Method and Outlets- wise Average performance	10
<i>i. Average performance per FWC by method</i>	10
<i>ii. Average performance per RHS-A by method</i>	11
<i>iii. Average performance per MSU by method</i>	12
7. Percentage Distribution of Total CYP by Province/Sector During the Current Quarter	13
8. Percentage Distribution of Total CYP by Service Outlets During the Current Quarter	13
9. Percentage Distribution of Total CYP of Contraceptive Performance by Methods during the Current Quarter	13
10. Province-Wise Family Planning and Mother & Child Health (MCH) Services Delivery	13
STATISTICAL TABLES	15-25

SUMMARY

The profile of contraceptive performance in the quarter October – December 2011, compared with the same period of 2010 as well as with the previous quarter (July -September, 2011) is summarized as under:-

- The overall contraceptive Performance for the quarter of October - December 2011 in terms of Couple Years of Protection (CYP) in comparison with the corresponding quarter of the last year (October - December 2010) decreases by (3.6%). However, the current quarter performance vis a vis the previous quarter (October - December, 2011), increases by 14.1%.
- The Province/Region-wise increase is registered in Punjab (4.2%), Khyber Pakhtunkhwa (9.1%), and FATA (44.8%) while decline in Sindh (17.2%), Balochistan (12.7%), Islamabad (5.4%), AJK (8.1%) and GB (20.7%). On the other hand, contraceptive performance in this quarter (October - December 2011) in comparison with previous quarter (July- September, 2011), shows increase in all provinces Punjab (0.2%), Sindh (6.3%), Khyber Pakhtunkhwa (5.6%) and Balochistan (1.8%) while decrease in Islamabad (10.0%), AJK (8.5%) and Gilgit-Baltistan (0.1%).
- Method-wise profile shows an increase in Condoms (4.4%), Oral Pills (12.6%) and IUDs (3.8%). While decrease in Injectables (15.7%) and Contraceptive Surgery (25.5%). However, comparison of current quarter (October - December 2011) with previous quarter (July - September, 2011), shows increase in Condoms (32.6%), Oral Pills (6.9%), IUDs (12.2%), Injectables (9.1%) and Contraceptive Surgery (9.3%).
- The outlet-wise service delivery performance during October - December, 2011 when compared with the corresponding quarter of the last year, shows increase in Family Welfare Centers (FWCs 0.7%), Reproductive Health Services-A Centers (RHS-A 36.5%), Mobile Service Units (MSUs 3.6%), Hakeem & Homoeopaths-H&H (16.5%), Male Mobilizers-MM (6.1%), FATA (44.8%), Regional Training Institutes (RTIs 7.6 %) and Family Planning Association Of Pakistan-FPAP (3.4%), while decrease in RHS-B centers (58.0%), Provincial Line Departments-PLDs (10.7%), Registered Medical Practitioners-RMPs (19.1%), AJK (8.1%), Gilgit-Baltistan (20.7%), Marie Stopes Society of Pakistan (17.7%) and Social Marketing of Contraceptives (SMC 9.9%) has been observed.

INTRODUCTION

The rapid population growth is the main obstacle to a country's social progress, economic stability, health, environment, law & order and food security. Pakistan having the highest population growth is the sixth most populous country in the world. Moreover, Pakistan is making the third highest annual net addition to the global population after India and China. The country's high fertility rate is a major contributor to this situation since mortality rate has been fairly stable over the years.

The country is under heavy stress due to rapid growth in population. Therefore, an immediate action is required to curb the increasing trend of population. The provision of quality contraceptives and its easy access will help to reduce the Total Fertility Rate and consequently to control the population. This report is on the usage of contraceptives that are provided in the market from the government as well as from private outlets.

The main objectives of the report are as following:

- To assess the Source-wise, method-wise and outlet-wise contraceptives performance.
- To provide basis for annual contraceptives requirements and distribution in the country.

Methodology

As per past practice in the Ministry of Population Welfare, the Federal Bureau of Statistics collects the contraceptive performance data on monthly basis by post, fax and through e-mail from the Provincial Population Welfare Departments (PPWDs); Population Welfare Departments AJK, GB, FATA; District Population Welfare Office, Islamabad (ICT); Family Planning Association of Pakistan (FPAP); Marie Stopes Society of Pakistan (NGO); Social Marketing of Contraceptive (SMC); and Regional Training Institutes (RTIs). After editing and coding, the data is being entered on monthly basis and then processed according to tabulation plan at Data Processing Centre of PBS. At the end of quarter, monthly data is consolidated into the quarterly data. On the basis of quarterly data, contraceptive performance report is prepared. In this report, the percentage change in the quarter under report is compared with the corresponding quarter of last year as well as with the previous quarter of the current year. This report on Contraceptive Performance is for the quarter October - December, 2011.

Concepts and Definitions

In this report, the following concepts and definitions have been used:

Family Welfare Centre (FWC): The FWC is the cornerstone of Pakistan's Population Welfare Programme. These centres constitute the most extensive institutional network in the country for promoting and delivering family planning services in both urban and rural areas. As a static facility, it serves a population of about 7000; while operating through its satellites clinics and outreach facility, an FWC covers a population of about 12000.

Reproductive Health Services (RHS) Centres : The Reproductive Health Service Centers are the major clinical component of the Pakistan's Population Welfare Programme. They provide services through RHS-A Centers and RHS-B Centers.

The RHS-A centers are hospital-based service delivery units in the government sector. They provide contraceptive surgery facilities for women and men with safe and effective backup medical support. The RHS-B centres are Well-established hospitals and clinics in the private sector. These have fully-equipped operating facilities (operation theatre facilities, beds for admission, post-operative care, sterilization and emergency resuscitation equipment, etc.) and trained work force.

Mobile Service Units (MSUs): The MSUs are the flagship of the Population Welfare Programme. They provide a package of quality Family Planning/Reproductive Health (FP/RH) services to the people of those remote villages and hamlets where no other health facility exists. The MSUs operate through specially-designed vehicles which carry with-in them all the facilities of a mini clinic ensuring complete privacy for simple gynecological procedures.

Regional Training Institutes (RTIs): The RTIs provide skill-based training in FP/RH for all categories of health care providers i.e. Doctors, medical students, nurses, student nurses, lady health visitors and other paramedics. The RTIs also undertake activities focused on raising the awareness about the level of hakims, homeopaths, community health workers, teachers and college students.

Provincial Line Departments (PLDs): The Health outlets of PLDs have been involved in the Population Welfare Programme for provision of services in order to improve access and expand coverage of facilities for promotion of family planning.

Couple Years of Protection (CYP): The term Couple Years of Protection (CYP) is one of several commonly used indicators to assess international family planning efforts. It is the protection provided by contraceptive methods during one-year period, based upon the volume of all contraceptives sold or distributed free of charge to clients during that period. It is also an indirect estimator of birth control.

CONVERSION FORMULA FOR CONTRACEPTIVE USAGE INTO COUPLE YEARS OF PROTECTION (CYP)		
CONDOM	NO. OF UNITS / 144	= 1 CYP
ORAL PILL	NO. OF CYCLES / 15	= 1 CYP
IUD	NO. OF INSERTIONS x 3.5	= 1 CYP
INJECTABLE	NO. OF VIALS / 5	= 1 CYP
CONTRACEPTIVE SURGERY (CS)	NO. OF CASES x 12.5	= 1 CYP

Data Sources

The Contraceptive Performance Report is prepared on the basis of data received from the following sources:

- Provincial Population Welfare Departments (PPWDs);
- Population Welfare Departments AJK, GB and FATA;
- The District Population Welfare Office, ICT, Islamabad
- Family Planning Association of Pakistan (FPAP) ;
- Marie Stopes Society of Pakistan (NGO);
- Social Marketing of Contraceptive (SMC) and
- Regional Training Institutes (RTIs).

RESULTS AND DISCUSSION

1. Source-Wise Contraceptive Performance In Terms Of Couple Years Of Protection

The source-wise comparison of contraceptive performance during current quarter, (October - December, 2011) in terms of Couple Year of Protection (CYP) has been made with corresponding quarter of the previous year, and also with the previous quarter (July - September, 2011) by calculating percentage change for the respective period. **Table-1** given at the end of report is referred, in this regard.

At National level, a decrease of 3.6% has been recorded for all program and non-program outlets during the current quarter (October -December, 2011) as compared to corresponding quarter of 2010. However when performance was compared with the previous quarter (July - September, 2011), it depicted an increase of 14.1%.

On reviewing the scenario at provincial Population Welfare Departments, an increase has been observed in the performance of Punjab (4.2%) and Khyber Pakhtunkhwa (9.1%) while decrease has been witnessed in Sindh (17.2%) and Balochistan (12.7 %), when compared to corresponding quarter of 2010. On comparison with previous quarter, an increase has been noticed in all provinces Punjab (0.2%), Sindh (6.3%), Khyber Pakhtunkhwa (5.6%) and Balochistan (1.8%).

For Islamabad, a decrease of 5.4% over the corresponding quarter of the last year and 10.0 % over previous quarter has been recorded for October -December, 2011. A substantial increase of 44.8% has been observed for FATA in the current quarter as compared to corresponding quarter of the last year and increase of 19.8% over previous quarter (July - September, 2011).

A decrease of 8.1% was recorded in current quarter with respect to corresponding quarter of 2010 for AJK and 20.7% was observed for Gilgit-Baltistan. Moreover, a decrease of 8.5% and 0.1% was witnessed in current quarter over previous quarter, for AJK and Gilgit-Baltistan respectively. For NGO sector, an increase has been recorded in the performance of Family Planning Association of Pakistan-FPAP (3.4%) and decrease in the performance of Marie Stopes Society of Pakistan (17.7%) over the corresponding quarter of the last year. Whereas FPAP and Marie Stopes Society of Pakistan has been depicted an increase of 9.9% and 48.7% respectively, over previous quarter (July - September, 2011).

2. Method-wise Contraceptives Performance In Terms Of Couple Years Of Protection

In absolute terms, the Contraceptive Performance of Program and Non-Program service outlets reported a sale of 50.810 million units of Condoms, 1.515 million cycles of Oral Pills, 0.333

million insertions of Internal Urine Devices (IUDs) and 0.660 million vials of Injectables. Also 29,046 cases of Contraceptive Surgery were performed during the current quarter.

The method-wise analysis, in term of CYP, compared with the corresponding quarter of 2010 showed an increase in Condoms (4.4%), Oral pills (12.6%) and in IUDs (3.8%) whereas decrease in Injectables (15.7%) and in Contraceptive Surgery cases (25.5%). Performance compared with the previous quarter (July - September, 2011) showed increasing trend in Oral Pill (6.9%), Injectables (9.1)%, Contraceptives Surgeries by (9.3%), IUDs (12.2%) and Condoms (32.6%). The details are shown in **Table-2**.

3. Source and Method-wise Performance of Contraceptive Delivery Services

For the condoms, an increase has been observed in Punjab (7.5%), Sindh (11.1%), Khyber Pakhtunkhwa (12.1%), Balochistan by (1.2 %), Islamabad (16.4%), FATA (33.2%), AJK (10.9%), RTIs (7.7%), Marie Stopes Society (32.4%) and SMC (48.4%), whereas a decrease has been recorded in Gilgit-Baltistan (15.0%) and Family Planning Association of Pakistan-FPAP (17.5%), when performance of current quarter was compared with the previous quarter. When the performance compared with the corresponding quarter of 2010 it showed increase in Punjab (17.0%), Sindh (19.4%), Khyber Pakhtunkhwa (21.7%), Islamabad (35.6%), FATA (51.1%), AJK (1.5%), Gilgit-Baltistan (9.5%), FPAP (9.7%) and Marie Stopes Society (65.5%) whereas a decrease is observed in Balochistan (15.3%), RTIs (30.4%) and SMC (0.9%).

For Oral Pills, increase has been witnessed in Punjab (5.1%), Sindh (1.2%), Khyber Pakhtunkhwa (6.2%), Islamabad (12.8%), FATA (10.2%), Marie Stopes Society (21.8%) and SMC (10.9%), whereas a decrease in Balochistan (2.6%), AJK (7.4%), Gilgit-Baltistan (14.2%), RTIs (25.5%), and FPAP (5.6%) has been recorded, when performance of current quarter was compared with the previous quarter. When the performance was compared with the corresponding quarter of 2010 it showed an increase in Sindh (2.2%), Khyber Pakhtunkhwa (9.5%), Islamabad (13.8%), FATA (50.7%), Gilgit-Baltistan (10.4%), and Marie Stopes Society (36.2%) and SMC (30.5%) whereas a decrease has been observed in Punjab (0.1%), Balochistan (25.0%), AJK (12.6%), RTIs (12.2%) and FPAP (14.5%).

For IUD, increase has been depicted in Khyber Pakhtunkhwa (1.9%), Balochistan (0.2%), FATA (22.5%), Gilgit-Baltistan (29.6%), RTIs (13.8%), FPAP (8.2%), Marie Stopes Society (49.8%) and SMC (58.2%), whereas a decrease in Punjab (1.2%), Sindh (8.6%), Islamabad (20.6%)

and AJK (7.8%) has been recorded, when performance of current quarter was compared with the previous quarter. When the performance was compared with the corresponding quarter of 2010 it showed increase in Punjab (0.1%), Khyber Pakhtunkhwa (11.5%), FATA (54.8%), AJK (5.2%), RTIs (13.6%) FPAP (6.4%) and SMC (12.9%) whereas a decrease has been observed in Sindh (10.2%), Balochistan (12.9%), Islamabad (7.7%), Gilgit-Baltistan (27.4%) and Marie Stopes Society (18.6%).

In case of Injectables, increase has been observed in Punjab (9.2%), Khyber Pakhtunkhwa (4.8%), Balochistan (7.9%), Islamabad (14.5%), FATA (1.7%), FPAP (8.3%), Marie Stopes Society (13.6%) and SMC (18.7%), whereas a decrease in Sindh (3.9%), AJK (20.8%), Gilgit-Baltistan (19.0%) and RTIs (35.5%) has been recorded, when performance of current quarter was compared with the previous quarter. When the performance was compared with the corresponding quarter of 2010 it showed decrease in Punjab (24.7%), Sindh (28.4%), Khyber Pakhtunkhwa (16.5%), Balochistan (7.8%), Islamabad (26.5%), FATA (6.6%), AJK (29.5%), Gilgit-Baltistan (17.9%), RTIs (29.3%), FPAP (8.1%) and SMC (6.2%). However, only Marie Stopes Society depicted increase of 9.4%.

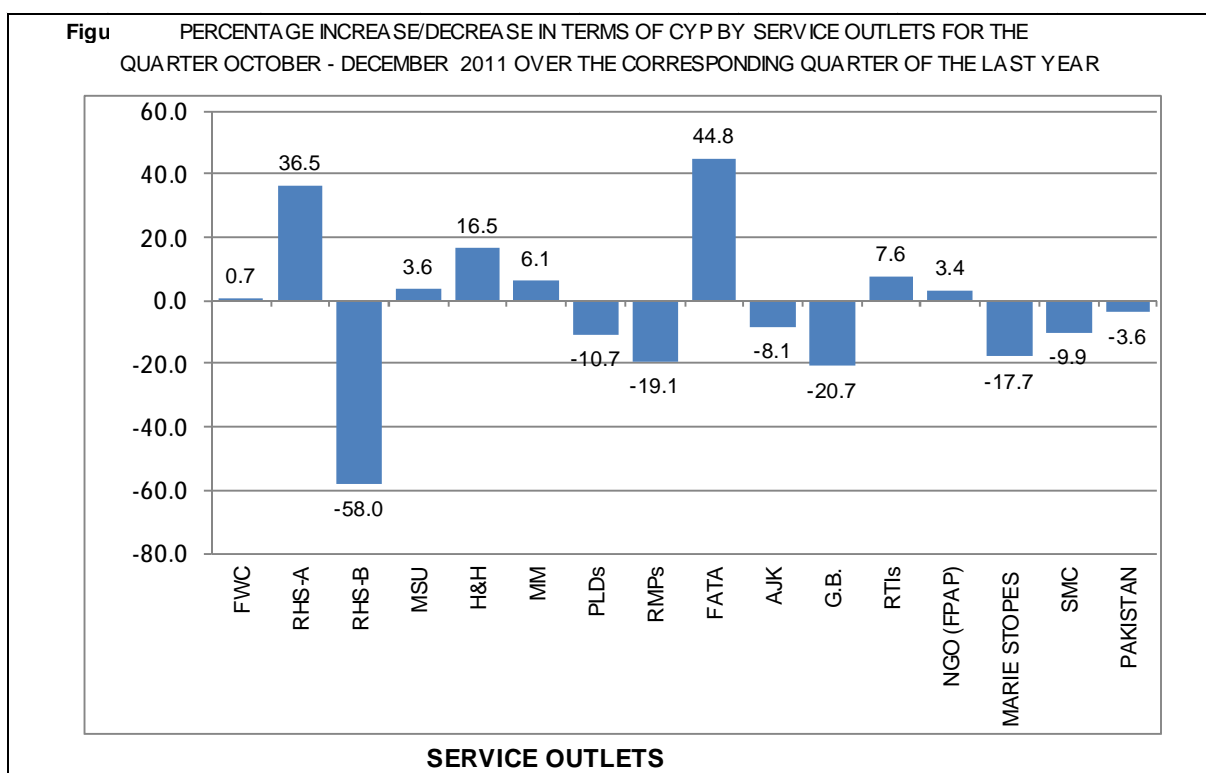
When it comes to Contraceptives Surgery cases, increase has been observed in Sindh (40.7%), Khyber Pakhtunkhwa (50.6%), Balochistan (7.4%), Islamabad (16.3%), FPAP (45.5%), and SMC (9.3%), whereas a decrease has been witnessed in Punjab (0.3%) and AJK (7.8%), when performance of current quarter was compared with the previous quarter. When the performance was compared with the corresponding quarter of 2010, it showed increase in Punjab (13.7%) and Khyber Pakhtunkhwa (12.0%). Whereas decrease in Sindh (32.0%), Balochistan (3.7%), Islamabad (2.6%), AJK (29.0%), FPAP (2.5%) and SMC (91.5%) has been observed. The details are reflected in **Table-3**.

4. Outlet-Wise Performance in Terms of Couple Year of Protection

The contribution of service outlets towards CYP during October - December, 2011 when compared with corresponding quarter of last year, showed an increase in Family Welfare Centers (FWCs 0.7%), Reproductive Health Services-A Centers (RHS-A 36.5%), Mobile Service Units (MSUs 3.6%), Hakeem & Homoeopaths-H&H (16.5%), Male Mobilizers-(MM 6.1%), FATA (44.8%) Regional Training Institutes (RTIs 7.6%) and Family Planning Association Of Pakistan-FPAP (3.4%), whereas a drop of performance in RHS-B centers (58.0%), Provincial Line

Departments-PLDs (10.7%), Registered Medical Practitioners-RMPs (19.1%), AJK (8.1%), Gilgit-Baltistan (20.7%), Marie Stopes Society of Pakistan (17.7%) and Social Marketing of Contraceptives (SMC 9.9%) has been observed.

The outlet-wise service delivery performance when compared with the previous quarter of 2011, it showed increase in RHS-A (5.9%), RHS-B centers (25.6%), H&H (1.3%), MM (13.6%), FATA (19.8%), RTIs (8.3%), FPAP (9.9%), Marie Stopes Society of Pakistan (48.7%) and SMC (46.2%) whereas a drop of performance in FWCs (0.9%), MSUs (5.4%), PLDs (2.1%), RMPs (8.4%), AJK (8.5%) and Gilgit-Baltistan (0.1%) has been observed. The details are given in **Table-4** and graphical presentation of data is as under:



5. Comparative Outlet-wise Contraceptives Performance For Delivery Services

The Outlets-wise Comparison of Performance of Contraceptives Delivery Services is depicted in **Table-5**. The details are as under:

(i) *Family Welfare Centers (FWCs)*: The performance of FWCs during the current quarter compared with the previous quarter in terms of CYP has been negative at national level by 0.9%.

At provincial level, an increase is observed in Khyber Pakhtunkhwa (2.2 %) and Islamabad (2.8%) whereas decrease is witnessed in Punjab (0.2%), Sindh (6.9%), Balochistan (2.4%). At national level, FWCs have shown an increase in condoms (5.9%), Oral Pills (0.8%) and Injectables (4.9%) whereas decrease in IUDs (2.3%).

(ii) Reproductive Health Services Centers (RHS-A): The performance of RHS-A centers during current quarter compared with the previous quarter in terms of CYP has been positive at national level by 5.9%. At provincial level, an increase is observed in Sindh (37.4%), Khyber Pakhtunkhwa (17.5 %) Balochistan (19.6%) and Islamabad (30.7%) whereas decrease is observed in Punjab (3.8%). At national level, RHS-A have shown an increase in condoms (22.2%), Oral Pills (8.8%), IUDs (9.9%), Injectables (6.0%) and Contraceptive Surgery (5.0%).

(iii) Reproductive Health Services Centres (RHS-B): The performance of RHS-B centers of the current quarter compared with the previous quarter in terms of CYP has been increased at national level by 25.6%. At provincial level, an increase is observed in Punjab (20.3%), Sindh (38.3%), Khyber Pakhtunkhwa (105.2 %), whereas decrease is observed in Balochistan (8.4%) and Islamabad (12.5%). At national level, RHS-B have shown an increase in condoms (550.3%), Oral Pills (256.6%), IUDs (120%) and Contraceptive Surgery (25.2%) whereas decrease is observed in Injectables (59.8%).

(iv) Mobile Service Units (MSUs): The performance of MSUs of the current quarter compared with the previous quarter in terms of CYP has been decreased at national level by 5.4% and at provincial level, a decrease is observed in Punjab (2.4%), Sindh (13.7%), Khyber Pakhtunkhwa (0.2 %), Balochistan (6.2%) and Islamabad (59.4%). At national level, MSUs have shown an increase in condoms (0.9%) and Injectables (2.6%) whereas decrease is observed in Oral Pills (1.6%) and IUDs (6.6%).

(v) Provincial Line Departments (PLDs): A decrease has been reported in terms of CYP at national level by 2.1% whereas at Provincial level an increase is observed in Sindh (792%) and Balochistan (1.1%) whereas decrease is observed in Punjab (1.1%), Khyber Pakhtunkhwa (3.6%) and Islamabad (34.5%). At national level, PLDs have shown increase in condoms (70.7%), Oral Pills (120.6%) and Injectables (3.4%) whereas decrease is observed in IUDs (7.6%).

(vi) Registered Medical Practitioners (RMPs): In terms of CYP, a decrease has been observed in the performance of RMPs at national level by 8.4% and at provincial level, increase is observed

in Punjab (15.5%) and Balochistan (13.7%) whereas decrease is observed in Sindh (11.2%), Khyber Pakhtunkhwa (2.1%) and Islamabad (33.1%). At national level, RMPs have shown increase in condoms (13.6%), Oral Pills (2.4%) and Injectables (7.4%) whereas decrease is observed in IUDs (15.5%).

(vii) Hakeems and Homoeopaths (H&H): In terms of CYP, an increase has been observed in the performance of H&H at national level by 1.3% and at provincial level, increase has been observed in Punjab (4.1%), Khyber Pakhtunkhwa (12.7%) and Balochistan (14.6%) whereas decrease is observed in Sindh (12.6%). At national level, H&H have shown an increase in Oral Pills (4.9%) whereas minor decrease is observed in condoms (0.1%).

(viii) Male Mobilizer: In terms of CYP, an increase has been observed in the performance of Male Mobilizer at national level by 13.6% and at provincial level, increase has been observed in Punjab (9.5%), Sindh (11.8%), Khyber Pakhtunkhwa (30.7%) and Islamabad (17.0%). At national level, M&M have shown increase in condoms (15.5%) and Oral Pills (8.8%).

(ix) Family Planning Association of Pakistan (FPAP): The overall contraceptive performance has shown an increase by 9.9% in terms of CYP for FPAP compared with the previous quarter, the method-wise performance has shown an increase in IUDs (8.2%) injectable (8.3%) and Contraceptive Surgery (45.5%), whereas decrease in Condoms (17.5%) and Oral Pills (5.6%) has been observed.

(x) Azad Jammu & Kashmir (AJK): The contraceptive performance during the current quarter for AJK has decreased in terms of CYP by 8.5%. In the method-wise performance increase has been observed in Condoms (10.9%) whereas decrease in Oral Pills (7.4%), IUDs (7.8%), Injectables (20.8%) and C.S. cases (7.8%).

(xi) Gilgit – Baltistan (GB): A minor decrease of 0.1% has been reported in terms of CYP during the current quarter for GB. In the method-wise performance increase has been observed in IUDs (29.6%) whereas decrease in Condoms (15.0%), Oral Pills (14.2%) and Injectables (19.0%).

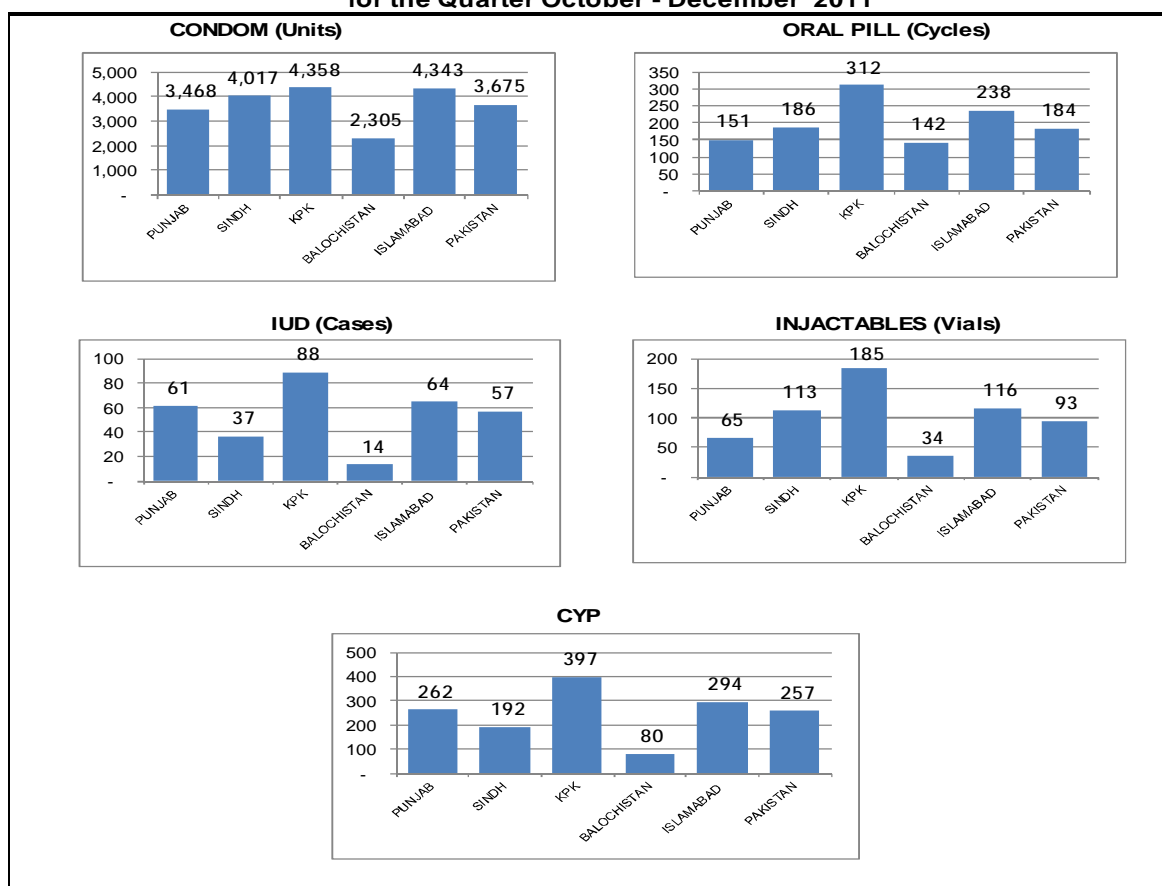
(xii) FATA: The contraceptive performance during the current quarter for FATA has reported an increase of 19.8% in terms of CYP. In the method-wise performance, an increase has observed for Condoms (33.2%), Oral Pills (10.2%), and IUDs (22.5%) Injectables (1.7%).

6. Method and Outlet-wise Average Performance

Method and Outlet-wise Average performance for the Federal and Provincial setups during the Current Quarter is given in **Table-6**. The details are as under:

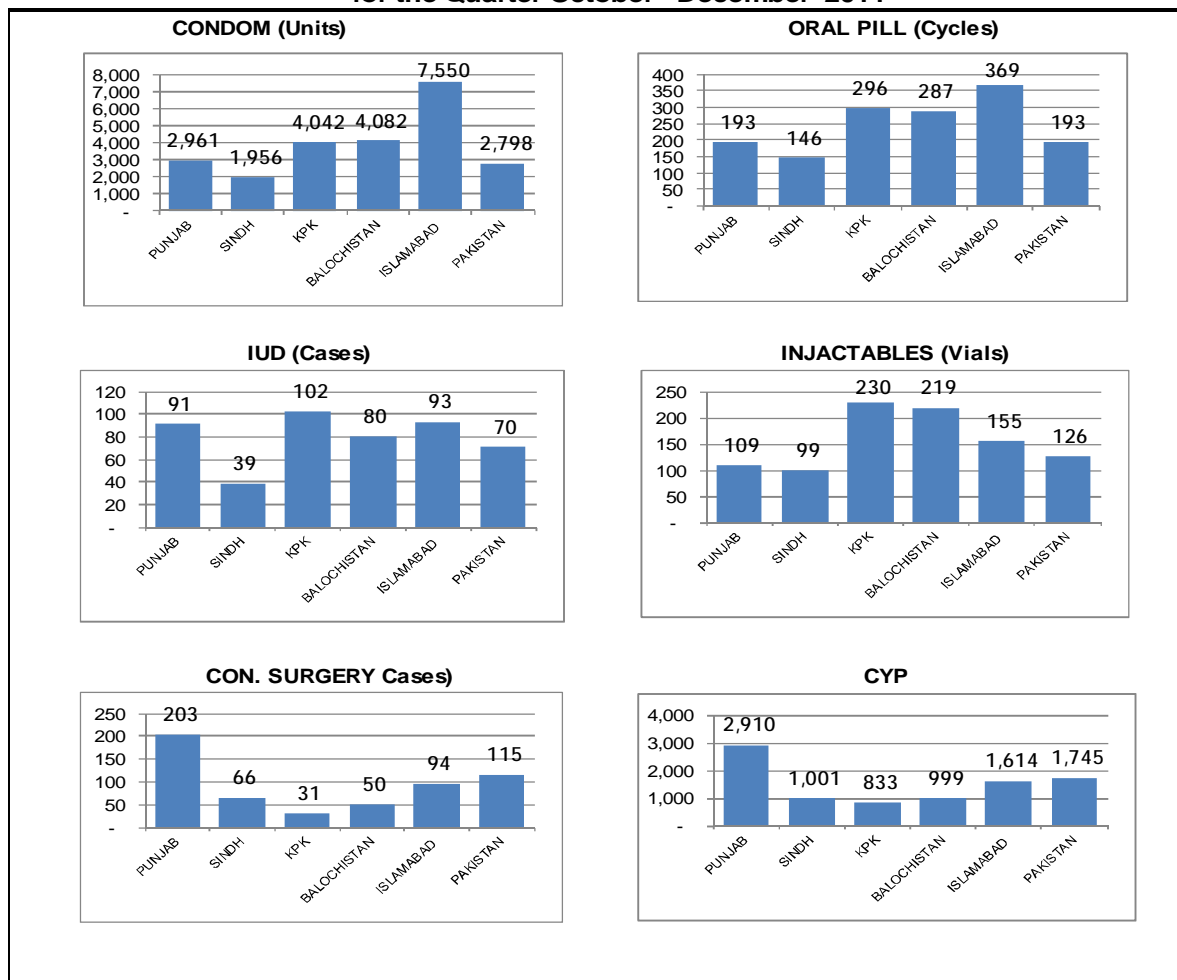
(i) **Average performance per FWC by method:** The average performance obtained for Condoms is 4358 units per FWC sold in Khyber Pakhtunkhwa, followed by 4343 units in Islamabad, 4017 units in Sindh, 3468 units in Punjab and 2305 units in Balochistan. The maximum numbers i.e. 312 cycles of Oral Pills per FWC were dispensed by Khyber Pakhtunkhwa and the lowest 142 cycles were reported by FWCs of Baluchistan. The highest insertions of IUDs i.e. 88 per FWC have been reported in Khyber Pakhtunkhwa and the lowest figure reported is 14 by Balochistan. By looking at the figure for injectables, it is observed that the maximum number has been reported for Khyber Pakhtunkhwa as 185 per FWC vials while the minimum number i.e. 34 have been observed in Balochistan. When these contraceptives performances are translated into CYP, it is observed that on average, the highest number of CYP i.e. 397 has been reported by Khyber Pakhtunkhwa while the lowest i.e. 80 for Balochistan. The graphical presentation of each contraceptive method dispensed per FWC is presented below:

Figure-2 Average Achievement Per FWC by Method and Province for the Quarter October - December 2011

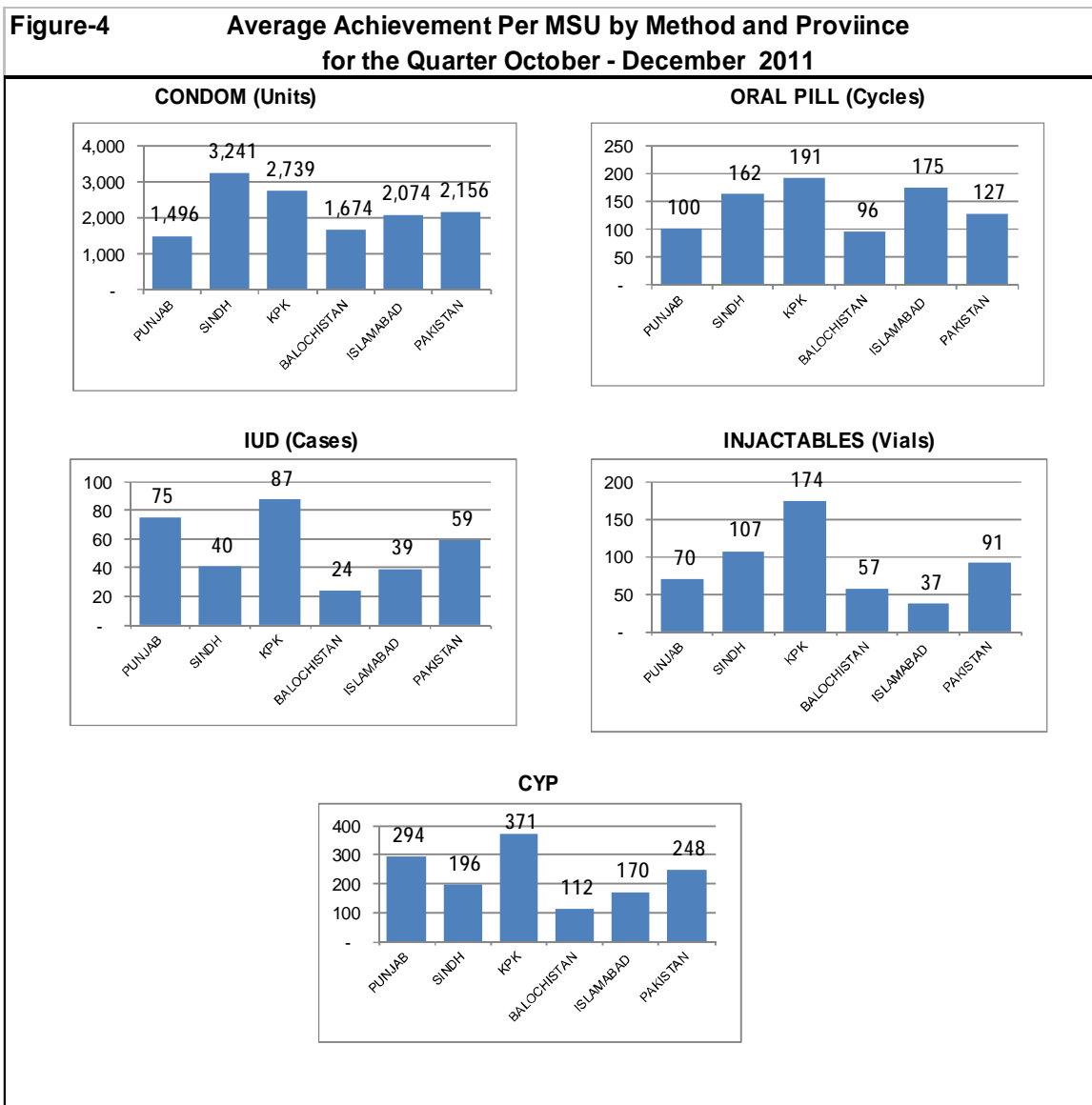


(ii) **Average performance per RHS-A by method:** The highest average achievement for Condoms per RHS-A is 7550 units sold in Islamabad followed by 4082 units in Balochistan, 4042 units in Khyber Pakhtunkhwa, 2961 units in Punjab and 1956 units in Sindh. The Reproductive Health Services-A Centres of Islamabad were able to dispense maximum number i.e. 369 cycles of Oral Pills as compared to the lowest 146 cycles of Oral Pills by RHS-A of Sindh. The highest insertions of IUDs, 102 were reported by Khyber Pakhtunkhwa in comparison to lowest 39 insertions carried out by RHS-A in Sindh. The highest Injectables i.e. 230 vials were reported by Khyber Pakhtunkhwa in comparison to lowest 99 vials reported by RHS-A of Sindh. The highest Contraceptive Surgery cases were performed by Punjab i.e. 203 and the lowest i.e. 31 in Khyber Pakhtunkhwa. When the data of contraceptives performances is translated into CYP, it is observed that on average, the highest numbers of CYP have been calculated for Punjab i.e 2910 while the lowest 833 appeared for Khyber Pakhtunkhwa. The graphical presentation of each contraceptive method recorded per RHS-A is presented below:

Figure-3 Average Achievement Per RHS-A by Method and Province for the Quarter October - December 2011



(iii) **Average performance per MSU by method:** The highest average reported performance for Condoms per MSU is 3241 units in Sindh followed by 2739 units in Khyber Pakhtunkhwa, 2074 units in Islamabad, 1674 in Balochistan and 1496 in Punjab. The Mobile Service Unit of Khyber Pakhtunkhwa was able to dispense highest numbers of 191 cycles of Oral Pills as compared to the lowest 96 cycles of Oral Pills in Balochistan. The highest reported insertions of IUDs i.e. 87 took place in Khyber Pakhtunkhwa compared to the lowest 24 IUDs in Balochistan. The highest numbers of Injectables 174 vials reported by Khyber Pakhtunkhwa as compared to lowest 37 vials reported by MSUs of Islamabad. When the contraceptive performance data is translated into CYP, it is observed that on the average, the highest numbers of CYP i.e. 371 were calculated for Khyber Pakhtunkhwa while the lowest were 112 for Balochistan. The graphical presentation of each contraceptive method as reported by MSUs is presented below:



7. **Percentage Distribution Of Total CYP By Source During The Current Quarter**

The percentage distribution of total CYP by Province/Sector during the current quarter reflected 35.50% in Punjab, 11.18% in Sindh, 10.14% in Khyber Pakhtunkhwa, 1.20% in Balochistan, 1.04% in Islamabad, 0.35% in FATA, 0.29% in AJK , 0.1% in Gilgit – Baltistan, 6.74% in FPAP and 32.23% in SMC . The details are given in **Table-7**.

8. **Percentage Distribution Of Total CYP By Service Outlets During The Current Quarter**

The percentage distribution of total CYP by Service outlets during the current quarter was 33.20% in FWCs, 15.61% in RHS-A, 3.29% in RHS-B, 3.03% in MSUs, 0.98% in PLDs, 0.96% in RMPs. The details are presented in the **Table-8**.

9. **Percentage Distribution Of Total CYP Of Contraceptive Performance By Methods During The Current Quarter**

The method-wise percentage contribution for IUDs, Contraceptive Surgery, Condom, Injectables and Oral Pills in terms of total CYP has been 55.08%, 17.18%, 16.70%, 6.25% and 4.78% respectively. The details are given in **Table-9**

10. **Province-Wise Family Planning And Mother & Child Health (MCH) Services Delivery**

The data indicates that during the quarter 2,067,774 clients availed Family Planning Services of various Contraceptive methods out of which the Family Welfare Centers provided the services to 111,958 clients for Pre-natal and 90,715 clients for Post-natal Care. Apart from these, FW Centers has provided treatment to 859,982 clients for General Ailments (Children + Adults). The details are given in **Table-10**.

STATISTICAL TABLES

LIST OF TABLES

- TABLE-1** SOURCE-WISE CONTRACEPTIVE PERFORMANCE IN TERMS OF CYP DURING OCTOBER - DECEMBER, 2011 OVER THE PREVIOUS QUARTER AND CORRESPONDING QUARTER OF THE LAST YEAR.
- TABLE-2** METHOD-WISE PERFORMANCE IN TERMS OF CYP DURING OCTOBER - DECEMBER, 2011 OVER THE PREVIOUS QUARTER AND CORRESPONDING QUARTER OF THE LAST YEAR.
- TABLE-3** SOURCE AND METHOD-WISE PERFORMANCE OF CONTRACEPTIVES DELIVERY SERVICES FOR THE PERIOD OCTOBER - DECEMBER, 2011 OVER JULY – SEPTEMBER, 2011
- TABLE-4** OUTLET-WISE PERFORMANCE IN TERMS OF CYP DURING OCTOBER - DECEMBER, 2011 OVER THE PREVIOUS QUARTER AND CORRESPONDING QUARTER OF THE LAST YEAR.
- TABLE-5** OUTLET-WISE PERFORMANCE OF CONTRACEPTIVES DELIVER SERVICES FOR THE QUARTER OCTOBER - DECEMBER, 2011 OVER JULY-SEPTEMBER,2011
- TABLE-6** OUTLET-WISE AVERAGE PERFORMANCE OF CONTRACEPTIVES FOR THE QUARTER OCTOBER - DECEMBER, 2011.
- TABLE-7** PERCENTAGE DISTRIBUTION OF TOTAL CYP BY SOURCE FOR OCTOBER - DECEMBER,, 2011.
- TABLE-8** PERCENTAGE DISTRIBUTION OF TOTAL CYP BY SERVICE OUTLET FOR OCTOBER - DECEMBER, 2011
- TABLE-9** PERCENTAGE DISTRIBUTION OF TOTAL CYP BY METHODS FOR OCTOBER - DECEMBER, 2011.
- TABLE-10** PROVINCE-WISE FAMILY PLANNING AND MOTHER & CHILD HEALTH (MCH) SERVICES DELIVERY FOR THE PERIOD OCTOBER - DECEMBER, 2011.

Table-1

**SOURCE WISE PERFORMANCE IN TERMS OF CYP FOR THE QUARTER OCTOBER - DECEMBER 2011
OVER THE PREVIOUS QUARTER AND CORRESPONDING QUARTER OF THE LAST YEAR**

SOURCE	COUPLE YEARS OF PROTECTION (CYP)			%age Change	
	OCT-DEC. 2011	OCT-DEC. 2010	JULY-SEPT. 2011	OCT-DEC-2011 OCT-DEC-2010	OCT-DEC-2011 JUL-SEPT. 2011
POPULATION WELFARE DEPARTMENTS					
PUNJAB	750,082	719,830	748,268	4.2	0.2
SINDH	236,130	285,019	222,144	-17.2	6.3
KHYBER PAKHTUNKHWA	214,185	196,244	202,900	9.1	5.6
BALUCHISTAN	25,331	29,008	24,883	-12.7	1.8
ISLAMABAD	21,918	23,158	24,339	-5.4	-10.0
FATA	7,400	5,110	6,174	44.8	19.8
AJK	6,029	6,561	6,592	-8.1	-8.5
GILGIT BALTISTAN (GB)	2,168	2,733	2,170	-20.7	-0.1
SUB-TOTAL	1,263,241	1,267,661	1,237,471	-5.8	15.1
REGIONAL TRAINING INSTITUTES (RTIs)	2,439	2,266	2,252	7.6	8.3
NON-GOVERNMENTAL ORGANIZATIONS (NGOs)					
FAMILY PLANNING ASSOCIATION OF PAKISTAN (FPAP)	142,483	137,825	129,646	3.4	9.9
MARIE STOPES SOCIETY OF PAKISTAN	23,654	28,752	15,905	-17.7	48.7
SUB-TOTAL	166,137	166,578	145,551	-0.3	14.1
OTHER					
SOCIAL MARKETING OF CONTRACEPTIVES (SMC)	681,060	756,281	465,883	-9.9	46.2
PAKISTAN	2,112,877	2,192,786	1,851,156	-3.6	14.1

Table-2

**METHOD WISE PERFORMANCE IN TERMS OF CYP FOR THE QUARTER OCTOBER - DECEMBER 2011
OVER THE PREVIOUS QUARTER AND CORRESPONDING QUARTER OF THE LAST YEAR**

METHOD	OVERALL PERFORMANCE			%age Change	
	OCT-DEC. 2011	OCT-DEC. 2010	JULY-SEPT. 2011	OCT-DEC-2011 OCT-DEC-2010	OCT-DEC-2011 JUL-SEPT. 2011
CONDOM (Units)	50,809,952	48,687,473	38,308,426		
CYP	352,847	338,107	266,031	4.4	32.6
ORAL PILL (Cycles)	1,514,947	1,345,608	1,417,780		
CYP	100,996	89,707	94,519	12.6	6.9
IUD (Insertions)	332,536	320,215	296,403		
CYP	1,163,876	1,120,753	1,037,411	3.8	12.2
INJECTABLE (Vials)	660,414	783,281	605,292		
CYP	132,083	156,656	121,058	-15.7	9.1
CON. SURGERY (Cases)	29,046	39,005	26,571		
CYP	363,075	487,563	332,138	-25.5	9.3
TOTAL CYP	2,112,877	2,192,786	1,851,156	-3.6	14.1

Table-3

**SOURCE AND METHOD WISE PERFORMANCE OF CONTRACEPTIVE DELIVERY SERVICES
FOR THE PERIOD OCTOBER - DECEMBER 2011 OVER JULY - SEPTEMBER, 2011**

SOURCE	CONDOM (Units)			%age Change		ORAL PILL (Cycles)			%age Change		IUD (Insertions)			%age Change	
	OCT-DEC 2011	JULY-SEPT 2011	OCT-DEC 2010	OCT-DEC-2011 JUL-SEPT-2011	OCT-DEC-2011 OCT-DEC-2010	OCT-DEC 2011	JULY-SEPT 2011	OCT-DEC 2010	OCT-DEC-2011 JUL-SEPT-2011	OCT-DEC-2011 OCT-DEC-2010	OCT-DEC 2011	JULY-SEPT 2011	OCT-DEC 2010	OCT-DEC-2011 JUL-SEPT-2011	OCT-DEC-2011 OCT-DEC-2010
	2	3	4	5	6	7	8	9	10	11	12	13	14	15	16
POPULATION WELFARE DEPARTMENTS															
PUNJAB	8,675,395	8,073,326	7,412,293	7.5	17.0	362,115	344,617	362,556	5.1	-0.1	113,950	115,348	113,857	-1.2	0.1
SINDH	3,949,153	3,553,588	3,308,347	11.1	19.4	199,554	197,184	195,309	1.2	2.2	29,551	32,325	32,895	-8.6	-10.2
KHYBER PAKHTUNKHWA	2,811,990	2,508,438	2,309,816	12.1	21.7	184,859	174,048	168,835	6.2	9.5	42,767	41,983	38,363	1.9	11.5
BALUCHISTAN	522,721	516,409	616,780	1.2	-15.3	31,287	32,110	41,733	-2.6	-25.0	3,847	3,839	4,418	0.2	-12.9
ISLAMABAD	245,677	211,040	181,169	16.4	35.6	11,734	10,407	10,307	12.8	13.8	3,903	4,914	4,228	-20.6	-7.7
FATA	86,815	65,177	57,472	33.2	51.1	8,251	7,484	5,475	10.2	50.7	1,576	1,287	1,018	22.5	54.8
A.J.K.	67,429	60,808	66,428	10.9	1.5	3,307	3,572	3,782	-7.4	-12.6	1,049	1,138	997	-7.8	5.2
GILGIT BALTIKISTAN (GB)	10,915	12,846	9,968	-15.0	9.5	2,588	3,016	2,345	-14.2	10.4	302	233	416	29.6	-27.4
SUB-TOTAL	16,370,095	15,001,632	13,962,273	77.4	17.2	803,695	772,438	790,342	11.3	1.7	196,945	201,067	196,192	16.0	0.4
RTIs	10,454	9,703	15,017	7.7	-30.4	648	870	738	-25.5	-12.2	628	552	553	13.8	13.6
NGOs															
NGO (FPAP)	188,293	228,325	171,639	-17.5	9.7	24,775	26,245	28,980	-5.6	-14.5	31,656	29,260	29,754	8.2	6.4
MARE STOPES SOCIETY	20,564	15,536	12,428	32.4	65.5	3,196	2,625	2,346	21.8	36.2	6,564	4,382	8,061	49.8	-18.6
SUB-TOTAL	208,857	243,860	184,067	-14.4	13.5	27,971	28,870	31,326	-3.1	-10.7	38,220	33,642	37,815	13.6	1.1
OTHER															
SMC	34,220,546	23,053,231	34,526,116	48.4	-0.9	682,633	615,602	523,202	10.9	30.5	96,743	61,142	85,655	58.2	12.9
TOTAL	50,809,952	38,308,426	48,687,473	32.6	4.4	1,514,947	1,417,780	1,345,608	6.9	12.6	332,536	296,403	320,215	12.2	3.8
POPULATION WELFARE DEPARTMENTS															
PUNJAB	121,164	110,927	160,991	9.2	-24.7	19,411	19,466	17,079	-0.3	13.7	750,082	748,268	719,830	0.2	4.2
SINDH	88,302	91,856	123,396	-3.9	-28.4	5,945	4,225	8,737	40.7	-32.0	236,130	222,144	285,019	6.3	-17.2
KHYBER PAKHTUNKHWA	90,743	86,559	108,636	4.8	-16.5	1,160	770	1,036	50.6	12.0	214,185	202,900	196,244	5.6	9.1
BALUCHISTAN	9,814	9,098	10,647	7.9	-7.8	335	312	348	7.4	-3.7	25,331	24,883	29,008	1.8	-12.7
ISLAMABAD	7,406	6,468	10,074	14.5	-26.5	343	295	352	16.3	-2.6	21,918	24,339	23,158	-10.0	-5.4
FATA	3,653	3,592	3,912	1.7	-6.6	0	0	0	0.0	0.0	7,400	6,174	5,110	19.8	44.8
A.J.K.	3,907	4,930	5,538	-20.8	-29.5	71	77	100	-7.8	-29.0	6,029	6,592	6,561	-8.5	-8.1
GILGIT BALTIKISTAN (GB)	4,312	5,321	5,255	-19.0	-17.9	0	0	0	0.0	0.0	2,168	2,170	2,733	-0.1	-20.7
SUB-TOTAL	329,301	318,751	428,449	-5	-23.1	27,265	25,145	27,652	107	-1.4	1,263,241	1,237,471	1,267,661	15	-0.3
RTIs	626	971	885	-35.5	-29.3	0	0	0	0.0	0.0	2,439	2,252	2,266	8.3	7.6
NGOs															
NGO (FPAP)	87,889	81,190	95,625	8.3	-8.1	892	613	915	45.5	-2.5	142,483	129,646	137,825	9.9	3.4
MARE STOPES SOCIETY	1,619	1,425	1,480	13.6	9.4	0	0	0	0.0	0.0	23,654	15,905	28,752	48.7	-17.7
SUB-TOTAL	89,508	82,615	97,105	8.3	-7.8	892	613	915	45.5	-2.5	166,137	145,551	166,578	14.1	-0.3
OTHER															
SMC	240,979	202,955	256,842	18.7	-6.2	889	813	10,438	9.3	-91.5	681,060	465,883	756,281	46.2	-9.9
TOTAL	660,414	605,292	783,281	9.1	-15.7	29,046	26,571	39,005	9.3	-25.5	2,112,877	1,851,156	2,192,786	14.1	-3.6

Table-4

**OUTLET WISE PERFORMANCE IN TERMS OF CYP FOR THE QUARTER OCTOBER - DECEMBER 2011
OVER THE PREVIOUS QUARTER AND CORRESPONDING QUARTER OF THE LAST YEAR**

OUTLETS	COUPLE YEARS OF PROTECTION (CYP)			%age Change	
	OCT-DEC. 2011	OCT-DEC. 2010	JULY-SEPT. 2011	OCT-DEC-2011 OCT-DEC-2010	OCT-DEC-2011 JUL-SEPT. 2011
FAMILY WELFARE CENTRES (FWCs)	701,399	696,714	707,653	0.7	-0.9
REPRODUCTIVE HEALTH SERVICES-A CENTRES (RHS-A)	329,866	241,642	311,513	36.5	5.9
REPRODUCTIVE HEALTH SERVICES-B CENTRES (RHS-B)	69,498	165,572	55,327	-58.0	25.6
MOBILE SERVICE UNITS (MSU)	64,104	61,895	67,757	3.6	-5.4
HAKEEM & HOMOEOPATHS (H&H)	2,258	1,938	2,229	16.5	1.3
MALE MOBLIZER (MM)	39,646	37,358	34,899	6.1	13.6
PROVINCIAL LINE DEPARTMENTS (PLDs)	20,629	23,103	21,067	-10.7	-2.1
REGISTER MEDICAL PRATICIONERS (RMPs)	20,244	25,037	22,089	-19.1	-8.4
FATA*	7,400	5,110	6,174	44.8	19.8
AJK*	6,029	6,561	6,592	-8.1	-8.5
GILGIT BALTISTAN (GB)*	2,168	2,733	2,170	-20.7	-0.1
REGIONAL TRANNING INSTITUTES (RTIs)	2,439	2,266	2,252	7.6	8.3
NON-GOVERNMENTAL ORGANIZATIONS (NGOs) **					
FAMILY PLANNING ASSOCIATION OF PAKISTAN (FPAP)	142,483	137,825	129,646	3.4	9.9
MARIE STOPES SOCIETY OF PAKISTAN	23,654	28,752	15,905	-17.7	48.7
OTHER**					
SOCIAL MARKETING OF CONTRACEPTIVES (SMC)	681,060	756,281	465,883	-9.9	46.2
PAKISTAN	2,112,877	2,192,786	1,851,156	-3.6	14.1
* Very few Outlets in the field, over all performance has been reported					
** NGOs and others rport over all performance					

Table-5

**OUTLET WISE PERFORMANCE OF CONTRACEPTIVE DELIVERY SERVICES
FOR THE QUARTER OCTOBER - DECEMBER 2011 OVER JULY - SEPTEMBER 2011**

OUTLETS	CONDOM (Units)			%age Change			ORAL PILL (Cycles)			%age Change			IUD (Insertions)			%age Change	
	OCT-DEC 2011	JULY-SEPT 2011	OCT-DEC 2010	OCT-DEC-2011 JUL-SEPT-2011	OCT-DEC-2011 OCT-DEC-2010	OCT-DEC 2011	JULY-SEPT 2011	OCT-DEC 2010	OCT-DEC-2011 JUL-SEPT-2011	OCT-DEC-2011 OCT-DEC-2010	OCT-DEC 2011	JULY-SEPT 2011	OCT-DEC 2010	OCT-DEC-2011 JUL-SEPT-2011	OCT-DEC-2011 OCT-DEC-2010		
1	2	3	4	5	6	7	8	9	10	11	12	13	14	15	16		
FAMILY WELFARE CENTRES (FWC)																	
PUNJAB	5,202,184	4,896,706	4,458,929	6.2	16.7	226,575	228,991	226,034	-1.1	0.2	91,872	93,240	91,792	-1.5	0.1		
SINDH	2,522,975	2,367,359	2,197,272	6.6	14.8	116,737	115,416	111,277	1.1	4.9	23,154	25,993	24,780	-10.9	-6.6		
KHYBER PAKHTUNKHWA	1,839,279	1,741,991	1,511,815	5.6	21.7	131,519	125,656	116,367	4.7	13.0	37,281	36,704	33,460	1.6	11.4		
BALUCHISTAN	367,253	376,115	323,474	-5.0	10.4	22,034	23,727	20,913	-7.1	5.4	2,098	2,125	2,493	-1.3	-15.8		
ISLAMABAD	125,943	109,294	98,955	15.2	27.3	6,895	6,045	6,355	14.1	8.5	1,865	1,858	1,762	0.4	5.9		
PAKISTAN	10,047,634	9,491,465	8,590,445	5.9	17.0	503,760	499,835	480,966	0.8	4.7	156,271	159,920	154,287	-2.3	1.3		
REPRODUCTIVE HEALTH CENTRES-A (RHS-A)																	
PUNJAB	222,073	182,841	166,668	21.5	33.2	14,462	13,575	14,341	6.5	0.8	6,820	6,661	6,997	2.4	-2.5		
SINDH	154,534	121,752	120,695	26.9	28.0	11,531	10,065	9,914	14.6	16.3	3,060	2,445	3,389	25.2	-9.7		
KHYBER PAKHTUNKHWA	105,094	96,428	77,276	9.0	36.0	7,700	7,822	6,301	-1.6	22.2	2,666	2,446	2,301	8.6	15.4		
BALUCHISTAN	24,492	13,224	22,632	85.2	8.2	1,722	1,048	1,844	64.3	-6.6	481	366	559	31.4	-14.0		
ISLAMABAD	22,650	18,620	17,416	21.6	30.1	1,107	1,059	937	4.5	18.1	280	177	275	58.2	1.8		
PAKISTAN	528,843	432,875	404,687	22.2	30.7	36,522	33,569	33,337	8.8	9.6	13,297	12,095	13,521	9.9	-1.7		
REPRODUCTIVE HEALTH CENTRES-B (RHS-B)																	
PUNJAB	-	-	-	0.0	0.0	-	-	-	0.0	0.0	-	-	-	0.0	0.0		
SINDH	16,358	-	2,610	#DIV/0!	526.7	980	5	328	0.0	198.8	210	-	1,048	0.0	0.0		
KHYBER PAKHTUNKHWA	752	863	798	-12.9	-5.8	218	254	186	-14.2	17.2	139	102	153	36.3	-9.2		
BALUCHISTAN	418	240	144	74.2	190.3	120	40	118	200.0	1.7	16	23	58	-30.4	-72.4		
ISLAMABAD	2,000	1,900	2,400	5.3	-16.7	105	100	115	5.0	-8.7	75	75	45	0.0	66.7		
PAKISTAN	19,528	3,003	5,952	550.3	228.1	1,423	399	747	256.6	90.5	440	200	1,304	120.0	-66.3		
MOBILE SERVICE UNITS (MSU)																	
PUNJAB	175,054	185,647	157,174	-5.7	11.4	11,704	12,323	11,021	-5.0	6.2	8,789	9,012	7,826	-2.5	12.3		
SINDH	233,353	224,469	200,773	4.0	16.2	11,645	11,332	11,200	2.8	4.0	2,911	3,584	3,399	-18.8	-14.4		
KHYBER PAKHTUNKHWA	82,161	79,980	59,190	2.7	38.8	5,725	5,844	4,903	-2.0	16.8	2,613	2,646	2,310	-1.2	13.1		
BALUCHISTAN	63,600	59,631	53,205	6.7	19.5	3,644	3,668	3,311	-0.4	10.1	897	978	992	-8.3	-9.6		
ISLAMABAD	2,074	1,490	-	39.2	#DIV/0!	175	265	-	-34.0	#DIV/0!	39	106	-	-63.2	#DIV/0!		
PAKISTAN	556,242	551,217	470,342	0.9	18.3	32,893	33,422	30,435	-1.6	8.1	15,249	16,326	14,527	-6.6	5.0		
PROVINCIAL LINE DEPARTMENTS (PLDs)																	
PUNJAB	86,717	42,559	73,895	103.8	17.4	16,010	6,551	15,853	144.4	1.0	4,339	4,689	4,380	-7.1	-0.9		
SINDH	260	1,040	5,688	-75.0	-95.4	500	73	1,692	584.9	-70.4	50	-	120	#DIV/0!	-58.3		
KHYBER PAKHTUNKHWA	150	334	1,240	-55.1	-87.9	32	120	119	-73.3	-73.1	30	30	83	0.0	-63.9		
BALUCHISTAN	11,026	10,826	10,759	1.8	2.5	918	913	819	0.5	12.1	355	347	316	2.3	12.3		
ISLAMABAD	6,500	6,560	4,882	-0.9	33.1	345	413	276	-16.5	25.0	194	331	267	-41.4	-27.3		
PAKISTAN	104,653	61,319	96,464	70.7	8.5	17,805	8,070	18,759	120.6	-5.1	4,968	5,377	5,166	-7.6	-3.8		
REGISTER MEDICAL PRACTITIONERS (RMPs)																	
PUNJAB	272,456	259,124	223,368	5.1	22.0	10,157	8,616	8,263	17.9	22.9	2,130	1,766	2,862	20.6	-25.6		
SINDH	170,603	127,258	119,287	34.1	43.0	8,178	8,805	8,381	-7.1	-2.4	166	303	159	-45.2	4.4		
KHYBER PAKHTUNKHWA	23,905	27,272	19,513	-12.3	22.5	1,995	2,944	1,517	-32.2	31.5	48	55	56	-12.7	-14.3		
BALUCHISTAN	63,494	54,419	55,284	16.7	14.9	2,567	2,532	2,495	1.4	2.9	-	-	-	0.0	0.0		
ISLAMABAD	26,962	22,494	20,958	19.9	28.6	3,054	2,456	2,535	24.3	20.5	1,449	2,367	1,879	-38.8	-22.9		
PAKISTAN	557,420	490,567	438,410	13.6	27.1	25,951	25,353	23,191	2.4	11.9	3,793	4,491	4,956	-15.5	-23.5		
HAIKEEMS & HOMEOPATHS (H&H)																	
PUNJAB	165,064	167,425	147,181	-1.4	12.2	5,771	4,612	4,628	25.1	24.7	-	-	-	0.0	0.0		
SINDH	39,904	42,474	32,648	-6.1	22.2	2,529	3,221	2,657	-21.5	-4.8	-	-	-	0.0	0.0		
KHYBER PAKHTUNKHWA	23,405	18,975	16,190	23.3	44.6	1,326	1,362	1,048	-2.6	26.4	-	-	-	0.0	0.0		
BALUCHISTAN	2,250	1,954	1,404	15.1	60.3	219	192	175	14.1	25.1	-	-	-	0.0	0.0		
PAKISTAN	230,623	230,828	197,423	-0.1	16.8	9,845	9,387	8,509	4.9	15.7	-	-	-	0.0	0.0		
MALE MOBILIZER (MM)																	
PUNJAB	2,551,847	2,339,024	2,185,076	9.1	16.8	77,436	69,949	82,416	10.7	-6.0	-	-	-	0.0	0.0		
SINDH	811,166	669,226	629,374	21.2	28.9	47,454	46,267	49,860	-1.7	-4.8	-	-	-	0.0	0.0		
KHYBER PAKHTUNKHWA	737,244	542,595	623,794	35.9	18.2	36,344	30,046	38,373	21.0	-5.3	-	-	-	0.0	0.0		
BALUCHISTAN	188	-	149,878	#DIV/0!	-99.9	63	-	12,058	#DIV/0!	-99.5	-	-	-	0.0	0.0		
ISLAMABAD	59,548	50,682	36,558	17.5	62.9	53	69	89	-23.2	-40.4	-	-	-	0.0	0.0		
PAKISTAN	4,159,993	3,601,527	3,624,682	15.5	14.8	161,350	148,331	182,796	8.8	-11.7	-	-	-	0.0	0.0		
FAMILY PLANNING ASSOCIATION OF PAKISTAN (FPAP)**																	
	188,293	228,325	171,639	-17.5	9.7	24,775	26,245	28,980	-5.6	-14.5	31,666	29,260	29,754	8.2	6.4		
MARIE STOPES SOCIETY **																	
	20,564	15,535	12,428	32.4	65.5	3,196	2,825	2,346	21.8	36.2	6,564	4,382	8,061	49.8	-18.6		
SOCIAL MARKETING OF CONTRACEPTIVES**																	
	34,220,546	23,063,231	34,526,116	48.4	-0.9	682,633	615,602	523,202	10.9	30.5	96,743	61,142	85,655	58.2	12.9		
A.J.K.*	67,429	60,808	66,428	10.9	1.5	3,307	3,572	3,732	-7.4	-12.6	1,049	1,138	997	-7.8	5.2		
GILGIT BALISTAN (GB)*	10,915	12,846	9,968	-15.0	9.5	2,588	3,016	2,345	-14.2	10.4	302	233	416	29.6	-27.4		
REGIONAL TRAINING INSTITUTES (RTIs)																	
	10,454	9,703	15,017	7.7	-30.4	648	870	738	-25.5	-12.2	628	552	553	13.8	13.6		
FATA*	86,815	65,177	57,472	33.2	51.1	8,251	7,484	5,475	10.2	50.7	1,576	1,287	1,979	22.5	-20.4		
TOTAL ALL OUTLETS	50,869,952	38,308,426	46,687,473	32.6	4.4	1,514,947	1,417,780	1,345,608	6.9	12.6	332,536	296,403	321,176	12.2	3.5		

* Very few Outlets in the field, over all performance has been reported
** Report over all performance

OUTLETS	INJECTABLE (Vials)			%age Change		CON. SURGERY (Cases)			%age Change		COUPLE YEARS OF PROTECTION (CYP)			%age Change		
	OCT-DEC 2011	JULY-SEPT 2011	OCT-DEC 2010	OCT-DEC-2011 JUL-SEPT-2011	OCT-DEC-2011 OCT-DEC-2010	OCT-DEC 2011	JULY-SEPT 2011	OCT-DEC 2010	OCT-DEC-2011 JUL-SEPT-2011	OCT-DEC-2011 OCT-DEC-2010	OCT-DEC 2011	JULY-SEPT 2011	OCT-DEC 2010	OCT-DEC-2011 JUL-SEPT-2011	OCT-DEC-2011 OCT-DEC-2010	
	17	18	19	20	21	22	23	24	25	26	27	28	29	30	31	32
FAMILY WELFARE CENTRES (FWC)																
PUNJAB	97,653	87,859	122,197	11.1	-20.1	-	-	-	0.0	0.0	392,314	393,183	391,745	-0.2	0.1	
SINDH	71,202	72,307	100,924	-1.5	-29.4	-	-	-	0.0	0.0	120,583	129,571	129,592	-6.9	-7.0	
KHYBER PAKHTUNKHWA	77,915	74,928	92,352	4.0	-15.6	-	-	-	0.0	0.0	167,607	163,924	153,838	2.2	9.0	
BALUCHISTAN	5,326	5,180	5,914	2.8	-9.9	-	-	-	0.0	0.0	12,358	12,667	13,549	-2.4	-8.8	
ISLAMABAD	3,362	3,217	3,561	4.5	-5.6	-	-	-	0.0	0.0	8,538	8,308	7,990	2.8	6.9	
PAKISTAN	255,458	243,491	324,948	4.9	-21.4	-	-	-	0.0	0.0	701,399	707,653	696,714	-0.9	0.7	
REPRODUCTIVE HEALTH CENTRES-A (RHS-A)																
PUNJAB	8,170	7,598	9,331	7.5	-12.4	15,221	15,984	8,847	-4.8	72.0	218,273	226,808	139,057	-3.8	57.0	
SINDH	7,811	8,101	9,942	-3.6	-21.4	5,199	3,669	4,693	41.7	10.8	79,102	57,557	74,011	37.4	6.9	
KHYBER PAKHTUNKHWA	5,967	5,665	7,329	5.3	-18.6	794	604	624	31.5	27.2	21,668	18,435	18,276	17.5	18.5	
BALUCHISTAN	1,311	584	1,335	124.5	-1.8	301	276	278	9.1	8.3	5,993	5,010	5,979	19.6	0.2	
ISLAMABAD	464	422	493	10.0	-5.9	283	224	246	26.3	15.0	4,841	3,704	4,320	30.7	12.1	
PAKISTAN	23,723	22,370	28,430	6.0	-16.6	21,798	20,757	14,688	5.0	48.4	329,866	311,513	241,642	5.9	36.5	
REPRODUCTIVE HEALTH CENTRES-B (RHS-B)																
PUNJAB	-	20	-	0.0	0.0	4,190	3,482	8,232	20.3	-49.1	52,375	43,529	102,900	20.3	-49.1	
SINDH	1,053	3,017	95	-65.1	1,008.4	746	566	4,044	34.2	-81.6	10,460	7,554	54,277	38.3	-80.7	
KHYBER PAKHTUNKHWA	207	208	288	-0.5	-22.8	366	166	412	120.5	-11.2	5,123	2,497	5,757	105.2	-11.0	
BALUCHISTAN	85	105	128	-19.0	-33.6	34	36	70	-5.6	-51.4	509	566	1,112	-8.4	-54.3	
ISLAMABAD	45	110	95	-59.1	-52.6	60	71	106	-15.5	-43.4	1,042	1,192	1,526	-12.5	-31.7	
PAKISTAN	1,390	3,460	596	-59.8	137.2	5,396	4,311	12,864	25.2	-58.1	69,498	55,327	165,572	25.6	-58.0	
MOBILE SERVICE UNITS (MSU)																
PUNJAB	8,207	8,003	10,107	2.5	-18.8	-	-	-	0.0	0.0	34,399	36,253	31,239	-2.4	10.1	
SINDH	7,738	7,568	10,475	2.3	-26.1	-	-	-	0.0	0.0	14,133	16,372	16,132	-13.7	-12.4	
KHYBER PAKHTUNKHWA	5,233	4,829	5,732	8.4	-8.7	-	-	-	0.0	0.0	11,144	11,172	9,969	-0.2	11.8	
BALUCHISTAN	2,170	2,302	2,460	-5.7	-11.8	-	-	-	0.0	0.0	4,258	4,541	4,554	-6.2	-6.5	
ISLAMABAD	37	98	-	-62.2	#DIV/0!	-	-	-	0.0	0.0	170	419	-	-59.4	#DIV/0!	
PAKISTAN	23,386	22,800	28,774	2.6	-18.7	-	-	-	0.0	0.0	64,104	67,757	61,895	-5.4	3.6	
PROVINCIAL LINE DEPARTMENTS (PLDs)																
PUNJAB	5,254	5,200	12,695	1.0	-58.6	-	-	-	0.0	0.0	17,907	18,114	19,439	-1.1	-7.9	
SINDH	104	69	1,096	50.7	-90.5	-	-	-	0.0	0.0	231	26	792	792.0	-70.8	
KHYBER PAKHTUNKHWA	15	-	115	#DIV/0!	-87.0	-	-	-	0.0	0.0	111	115	330	-3.6	-66.3	
BALUCHISTAN	750	818	668	-8.3	12.3	-	-	-	0.0	0.0	1,530	1,514	1,369	1.1	11.8	
ISLAMABAD	512	332	932	54.2	-45.1	-	-	-	0.0	0.0	850	1,298	1,173	-34.5	-27.6	
PAKISTAN	6,635	6,419	15,506	3.4	-57.2	-	-	-	0.0	0.0	20,629	21,067	23,103	-2.1	-10.7	
REGISTER MEDICAL PRACTITIONERS (RMPs)																
PUNJAB	1,880	2,247	6,661	-16.3	-71.8	-	-	-	0.0	0.0	10,400	9,004	13,451	15.5	-22.7	
SINDH	383	794	864	-50.5	-54.5	-	-	-	0.0	0.0	2,380	2,690	2,116	-11.2	12.9	
KHYBER PAKHTUNKHWA	1,406	929	2,840	51.3	-50.5	-	-	-	0.0	0.0	748	764	1,001	-2.1	-25.2	
BALUCHISTAN	172	109	142	57.8	21.1	-	-	-	0.0	0.0	646	569	579	13.7	11.7	
ISLAMABAD	2,986	2,289	4,993	30.4	-40.2	-	-	-	0.0	0.0	6,060	9,062	7,890	-33.1	-23.2	
PAKISTAN	6,837	6,368	15,500	7.4	-55.9	-	-	-	0.0	0.0	20,244	22,089	25,037	-8.4	-19.1	
HAKES & HOMEOPATHS (H&H)																
PUNJAB	-	-	-	0.0	0.0	-	-	-	0.0	0.0	1,531	1,470	1,331	4.1	15.1	
SINDH	-	-	-	0.0	0.0	-	-	-	0.0	0.0	446	510	404	-12.6	10.4	
KHYBER PAKHTUNKHWA	-	-	-	0.0	0.0	-	-	-	0.0	0.0	251	223	182	12.7	37.6	
BALUCHISTAN	-	-	-	0.0	0.0	-	-	-	0.0	0.0	30	26	21	14.6	41.1	
PAKISTAN	-	-	-	0.0	0.0	-	-	-	0.0	0.0	2,258	2,229	1,938	1.3	16.5	
MALE MOBILIZER (MM)																
PUNJAB	-	-	-	0.0	0.0	-	-	-	0.0	0.0	22,884	20,906	20,689	9.5	10.7	
SINDH	-	-	-	0.0	0.0	-	-	-	0.0	0.0	8,797	7,865	7,695	11.8	14.3	
KHYBER PAKHTUNKHWA	-	-	-	0.0	0.0	-	-	-	0.0	0.0	7,543	5,771	6,890	30.7	9.5	
BALUCHISTAN	-	-	-	0.0	0.0	-	-	-	0.0	0.0	6	-	1,845	#DIV/0!	-99.7	
ISLAMABAD	-	-	-	0.0	0.0	-	-	-	0.0	0.0	417	357	260	17.0	60.5	
PAKISTAN	-	-	-	0.0	0.0	-	-	-	0.0	0.0	39,646	34,899	37,358	13.6	6.1	
FAMILY PLANNING ASSOCIATION OF PAKISTAN (FPAP)**																
	87,889	81,190	95,825	8.3	-8.1	892	613	915	45.5	-2.5	142,483	129,646	137,825	9.9	3.4	
MARIE STOPES SOCIETY **																
	1,619	1,425	1,480	13.6	9.4	-	-	-	0.0	0.0	23,654	15,905	28,752	48.7	-17.7	
SOCIAL MARKETING OF CONTRACEPTIVES**																
	240,979	202,955	256,842	18.7	-6.2	889	813	10,438	9.3	-91.5	681,060	466,883	756,281	46.2	-9.9	
A.J.K.*																
	3,907	4,930	5,538	-20.8	-29.5	71	77	100	-7.8	-29.0	6,029	6,592	6,561	-8.5	-8.1	
GILGIT BALISTAN (GB)*																
	4,312	5,321	5,255	-19.0	-17.9	-	-	-	0.0	0.0	2,168	2,170	2,733	-0.1	-20.7	
REGIONAL TRAINING INSTITUTES (RTIs)																
	626	971	885	-35.5	-29.3	-	-	-	0.0	0.0	2,439	2,252	2,266	8.3	7.6	
FATA*																
	3,653	3,592	3,912	1.7	-6.6	-	-	-	0.0	0.0	7,400	6,174	5,110	19.8	44.8	
TOTAL ALL OUTLETS	660,414	605,292	783,281	9.1	-15.7	29,046	26,571	39,005	9.3	-25.5	2,112,877	1,851,156	2,192,786	14.1	-3.6	
* Very few Outlets in the field, over all performance has been reported																
** Report over all performance																

Table-6

**OUTLET WISE AVERAGE PERFORMANCE OF CONTRACEPTIVES
FOR THE QUARTER OCTOBER - DECEMBER 2011**

OUTLET	NO. OF OUTLETS	CONDOM (Units)		ORAL PILL (Cycles)		IUD (Insertions)		INJECTABLE (Vials)		CON SURGERY (Cases)		CYP	
		OCT-DEC. 2011	Per Outlet	OCT-DEC. 2011	Per Outlet	OCT-DEC. 2011	Per Outlet	OCT-DEC. 2011	Per Outlet	OCT-DEC. 2011	Per Outlet	OCT-DEC. 2011	Per Outlet
FWCs													
PUNJAB	1500	5,202,184	3,468	226,575	151	91,872	61	97,653	65	-	-	392,314	262
SINDH	628	2,522,975	4,017	116,737	186	23,154	37	71,202	113	-	-	120,583	192
KHYBER PAKHTUNKHWA	422	1,839,279	4,358	131,519	312	37,281	88	77,915	185	-	-	167,607	397
BALUCHISTAN	155	357,253	2,305	22,034	142	2,098	14	5,326	34	-	-	12,358	80
ISLAMABAD	29	125,943	4,343	6,895	238	1,866	64	3,362	116	-	-	8,538	294
PAKISTAN	2734	10,047,634	3,675	503,760	184	156,271	57	255,458	93	-	-	701,399	257
RHS-A CENTRES													
PUNJAB	75	222,073	2,961	14,462	193	6,820	91	8,170	109	15,221	203	218,273	2,910
SINDH	79	154,534	1,956	11,531	146	3,060	39	7,811	99	5,199	66	79,102	1,001
KHYBER PAKHTUNKHWA	26	105,094	4,042	7,700	296	2,656	102	5,967	230	794	31	21,658	833
BALUCHISTAN	6	24,492	4,082	1,722	287	481	80	1,311	219	301	50	5,993	999
ISLAMABAD	3	22,650	7,550	1,107	369	280	93	464	155	283	94	4,841	1,614
PAKISTAN	189	528,843	2,798	36,522	193	13,297	70	23,723	126	21,798	115	329,866	1,745
MSUs													
PUNJAB	117	175,054	1,496	11,704	100	8,789	75	8,207	70	-	-	34,399	294
SINDH	72	233,353	3,241	11,645	162	2,911	40	7,739	107	-	-	14,133	196
KHYBER PAKHTUNKHWA	30	82,161	2,739	5,725	191	2,613	87	5,233	174	-	-	11,144	371
BALUCHISTAN	38	63,600	1,674	3,644	96	897	24	2,170	57	-	-	4,258	112
ISLAMABAD	1	2,074	2,074	175	175	39	39	37	37	-	-	170	170
PAKISTAN	258	556,242	2,156	32,893	127	15,249	59	23,386	91	-	-	64,104	248

Table-7

**PERCENTAGE DISTRIBUTION OF TOTAL CYP BY SOURCE
FOR OCTOBER - DECEMBER 2011**

	SOURCE	CYP	% AGE
A	POPULATION WELFARE DEPARTMENTS		
	PUNJAB	750,082	35.50
	SINDH	236,130	11.18
	KHYBER PAKHTUNKHWA	214,185	10.14
	BALUCHISTAN	25,331	1.20
	ISLAMABAD	21,918	1.04
	FATA	7,400	0.35
	AJK	6,029	0.29
	G.B.	2,168	0.10
	SUB-TOTAL	1,263,241	59.79
B	RTIs	2,439	0.12
C	NGOs		
	FPAP	142,483	6.74
	MARIE STOPES	23,654	1.12
	SUB-TOTAL	166,137	7.86
D	OTHER		
	SMC	681,060	32.23
	TOTAL	2,112,877	100.00

Table-8 PERCENTAGE DISTRIBUTION OF TOTAL CYP BY SERVICE OUTLET FOR OCTOBER - DECEMBER 2011

OUTLETS	CYP	% AGE
FWC	701,399	33.20
RHS-A	329,866	15.61
RHS-B	69,498	3.29
MSU	64,104	3.03
PLDs	20,629	0.98
RMPs	20,244	0.96
H&H	2,258	0.11
MM	39,646	1.88
FATA*	7,400	0.35
AJK*	6,029	0.29
G.B.*	2,168	0.10
RTIs	2,439	0.12
FPAP**	142,483	6.74
MARIE STOPES **	23,654	1.12
SMC**	681,060	32.23
TOTAL	2,112,877	100.00

* Very few Outlets in the field, over all performance included

**Report over all performance

Table-9 PERCENTAGE DISTRIBUTION OF TOTAL CYP BY METHOD FOR OCTOBER - DECEMBER 2011

METHODS	CYP	%AGE
CONDOM (Units)	352,847	16.70
ORAL PILL (Cycles)	100,996	4.78
IUD (Insertions)	1,163,876	55.08
INJECTABLE (Vials)	132,083	6.25
CON. SURGERY (Cases)	363,075	17.18
TOTAL	2,112,877	100.00

Table-10 PROVINCE WISE FAMILY PLANNING AND MCH SERVICES DELIVERY FOR THE PERIOD OCTOBER - DECEMBER 2011

PROVINCE/ FEDERAL TERRITORY	F.P CLIENTS	MOTHER CARE (Number of Clients)			GENERAL AILMENTS (Number of patients)			MCH	ALL
		Pre-Natal	Post-Natal	Total	Children	Adults	Total	CLIENTS	CLIENTS
								(Col 5+8)	(Col.2+5+8)
1	2	3	4	5	6	7	8	9	10
PUNJAB	446,712	39,343	23,502	62,845	53,981	233,759	287,740	350,585	797,297
SINDH	306,041	43,970	45,777	89,747	255,634	0	255,634	345,381	651,422
KHYBER PAKHTUNKHWA	178,980	16,861	11,553	28,414	40,146	143,533	183,679	212,093	391,073
BALUCHISTAN	30,586	4,717	3,120	7,837	7,502	39,270	46,772	54,609	85,195
ISLAMABAD	12,053	1,256	731	1,987	5,463	17,004	22,467	24,454	36,507
AJK	6,814	1,345	1,149	2,494	3,635	4,421	8,056	10,550	17,364
G.B.	6,511	1,028	1,794	2,822	3,749	16,121	19,870	22,692	29,203
FATA	17,422	3,438	3,089	6,527	3,982	31,782	35,764	42,291	59,713
TOTAL	1,005,119	111,958	90,715	202,673	374,092	485,890	859,982	1,062,655	2,067,774