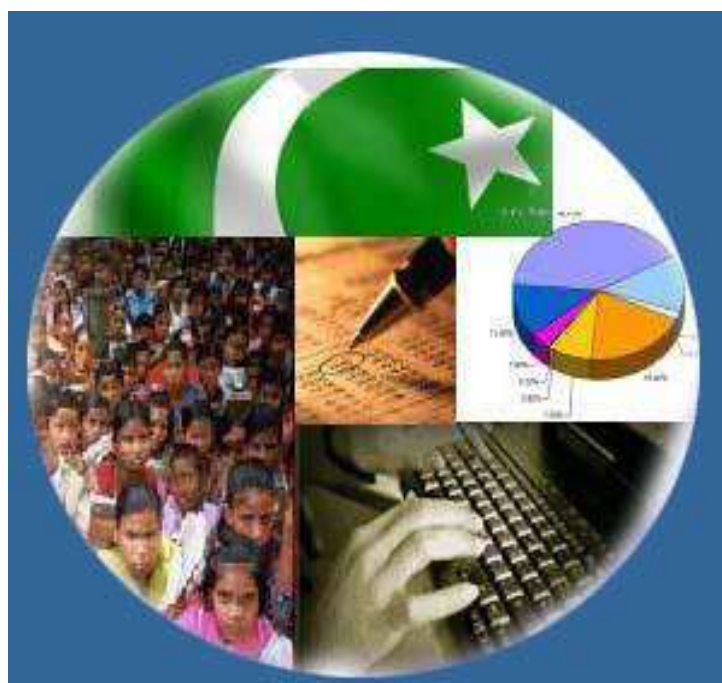




Monthly Review on Price Indices



August, 2020
(Base Year 2015-16)

Government of Pakistan
Ministry of Planning, Development & Special Initiatives
Pakistan Bureau of Statistics
Islamabad

Inflation in Brief

1. **CPI inflation General**, increased by 8.2% on year-on-year basis in August 2020 as compared to an increase of 9.3% in the previous month and 10.5% in August 2019. On month-on-month basis, it increased by 0.6% in August 2020 as compared to an increase of 2.5% in the previous month and an increase of 1.6% in August 2019.
2. **CPI inflation Urban**, increased by 7.1% on year-on-year basis in August 2020 as compared to an increase of 7.8% in the previous month and 10.6% in August 2019. On month-on-month basis, it increased by 0.8% in August 2020 as compared to an increase of 2.2% in the previous month and an increase of 1.5% in August 2019.
3. **CPI inflation Rural**, increased by 9.9% on year-on-year basis in August 2020 as compared to an increase of 11.6% in the previous month and 10.3% in August 2019. On month-on-month basis, it increased by 0.4 % in August 2020 as compared to an increase of 3.0% in the previous month and an increase of 1.9% in August 2019.
4. **SPI inflation** on YoY increased by 11.7% in August 2020 as compared to an increase of 13.7% a month earlier and an increase of 12.1% in August 2019. On MoM basis, it increased by 0.9% in August 2020 as compared to an increase of 3.0% a month earlier and an increase of 2.7% in August 2019.
5. **WPI inflation** on YoY basis increased by 3.3% in August 2020 as compared to an increase of 3.2% a month earlier and an increase of 14.1% in August 2019. WPI inflation on MoM basis increased by 1.3% in August 2020 as compared to a decrease of 5.4% a month earlier and an increase of 1.2% in corresponding month of last year i.e. August 2019.
6. Figures 1 and 2 show graphically the yearly data of Table 1.a for Urban and Rural CPI while Table 1.1 shows "Period Average" and "YoY" percent changes in indices of three years.

Table 1.a General Inflation (%) (Base 2015-16)																		
PERIOD	CPI														SPI**		WPI	
	General						Food				Non-Food							
	National		Urban		Rural		Urban		Rural		Urban		Rural					
	YoY	MoM	YoY	MoM	YoY	MoM	YoY	MoM	YoY	MoM	YoY	MoM	YoY	MoM	YoY	MoM	YoY	MoM
Feb-19	6.8	0.9	7.2	0.9	6.0	0.9	5.9	2.3	5.2	1.7	8.0	0.1	6.7	0.2	7.2	2.4	13.9	1.6
Mar-19	8.6	2.0	8.9	1.9	8.2	2.2	8.8	2.5	9.3	3.3	9.0	1.5	7.3	1.3	10.5	2.1	16.6	2.2
Apr-19	8.3	0.7	8.4	0.8	8.1	0.6	8.3	1.3	9.3	0.6	8.4	0.6	7.2	0.6	10.0	0.5	17.2	2.0
June-19	8.4	0.6	8.5	0.7	8.3	0.5	9.0	1.3	9.7	0.6	8.3	0.3	7.1	0.4	9.9	0.6	16.5	1.2
Jun-19	8.0	0.5	8.1	0.3	7.9	0.7	7.5	-0.3	9.1	0.7	8.4	0.7	7.0	0.7	9.3	0.9	14.0	0.2
Jul-19	8.4	1.8	8.7	2.0	7.9	1.6	7.9	1.0	9.3	1.7	9.2	2.5	6.8	1.5	8.9	1.0	13.3	3.1
Aug-19	10.5	1.6	10.6	1.5	10.3	1.9	11.9	3.1	12.6	2.9	9.9	0.5	8.4	1.1	12.1	2.7	14.1	1.2
Sep-19	11.4	0.8	11.6	0.7	11.1	0.8	15.0	2.0	15.0	1.8	9.7	0.0	8.0	0.0	14.7	1.9	15.9	0.1
Oct-19	11.0	1.8	10.9	1.6	11.3	2.2	13.7	1.4	14.6	2.6	9.3	1.7	8.7	1.8	15.1	2.7	13.3	2.0
Nov-19	12.7	1.3	12.1	1.0	13.6	1.9	16.6	2.4	19.3	3.4	9.6	0.2	9.0	0.6	20.2	3.7	11.2	-0.8
Dec-19	12.6	-0.3	12.0	-0.4	13.6	-0.3	16.7	-1.7	19.7	-1.1	9.5	0.4	8.8	0.4	18.1	-2.0	12.4	-0.3
Jan-20	14.6	2.0	13.4	1.7	16.3	2.4	19.5	2.7	23.8	3.4	10.2	1.1	10.5	1.5	18.3	0.5	15.4	1.8
Feb-20	12.4	-1.0	11.2	-1.1	14.2	-1.0	15.2	-1.4	19.7	-1.6	9.1	-0.9	9.8	-0.4	14.5	-0.8	12.7	-0.7
Mar-20	10.2	0.0	9.3	0.1	11.7	-0.1	13.0	0.6	15.5	-0.3	7.3	-0.1	8.5	0.1	11.8	-0.3	9.3	-0.9
Apr-20	8.5	-0.8	7.7	-0.7	9.8	-1.1	10.4	-1.0	12.9	-1.7	6.2	-0.5	7.4	-0.5	9.3	-1.8	4.9	-2.0
May-20	8.2	0.3	7.3	0.3	9.7	0.3	10.6	1.5	13.7	1.4	5.4	-0.4	6.4	-0.5	11.0	2.2	1.5	-2.1
Jun-20	8.6	0.8	7.6	0.7	10.0	1.0	12.9	1.8	15.2	2.0	4.7	0.0	5.8	0.1	11.5	1.4	0.9	-0.3
July-20	9.3	2.5	7.8	2.2	11.6	3.0	15.1	3.0	17.8	4.0	3.9	1.7	6.5	2.2	13.7	3.0	3.2	5.4
Aug-20	8.2	0.6	7.1	0.8	9.9	0.4	11.3	-0.3	13.5	-0.9	4.8	1.5	6.8	1.5	11.7	0.9	3.3	1.3

** SPI for quintile 1. Digits 0.0* are due to rounding off.

Core inflation (NFNE)

7. Measured by **non-food non-energy Urban CPI** increased by 5.6% on (YoY) basis in August 2020 as compared to an increase of 5.3% in the previous month and 8.5% in August 2019. On (MoM) basis, it increased by 0.7% in August 2020 as compared to increase of 0.6% in previous month, and an increase of 0.4% in corresponding month of last year i.e. August 2019.
8. Measured by **non-food non-energy Rural CPI** increased by 7.6% on (YoY) basis in August 2020 as compared to an increase of 7.8% in the previous month and 8.8% in August 2019. On (MoM) basis, it increased by 0.8% in August 2020 as compared to an increase of 1.1% in previous month, and an increase of 1.0% in corresponding month of last year i.e. August 2019.

Core inflation (Trimmed)

9. Measured by 20% **weighted trimmed mean Urban CPI** increased by 7.0% on (YoY) basis in August 2020 as compared to 6.7% in the previous month and by 8.5% in August 2019. On (MoM) basis, it increased by 1.3% in August 2020 as compared to an increase of 0.9% in the previous month and an increase of 0.6% in corresponding month of last year i.e. August 2019.
10. Measured by 20% **weighted trimmed mean Rural CPI** increased by 9.3% on (YoY) basis in August 2020 as compared to 9.8% in the previous month and by 8.7% in August 2019. On (MoM) basis, it increased by 1.0% in August 2020 as compared to an increase of 1.5% in the previous month and an increase of 1.2% in corresponding month of last year i.e. August 2019.

Table 1.b Core Inflation (%) (Base 2015-16)

Period	NFNE				Trimmed			
	Urban		Rural		Urban		Rural	
	YoY	MoM	YoY	MoM	YoY	MoM	YoY	MoM
Aug-19	8.5	0.4	8.8	1.0	8.5	0.6	8.7	1.2
Sep-19	8.4	0.4	8.8	0.3	9.3	0.6	9.6	0.6
Oct-19	7.7	0.5	8.6	0.7	8.9	0.5	9.4	0.7
Nov-19	7.5	0.3	8.4	0.5	9.5	0.4	10.7	0.7
Dec-19	7.5	0.4	8.1	0.3	9.6	0.2	10.8	0.3
Jan-20	7.9	1.1	9.0	1.0	10.3	1.2	12.7	1.9
Feb-20	8.0	0.2	9.4	0.5	9.7	0.1	12.8	0.6
Mar-20	7.4	0.3	9.4	0.6	8.7	0.3	11.4	0.1
Apr-20	6.4	0.2	8.5	0.3	6.7	-0.2	9.3	-0.6
May-20	6.3	0.4	8.4	0.4	6.7	0.4	8.9	0.5
Jun-20	6.5	0.4	8.8	0.7	7.4	0.4	9.9	0.9
Jul-20	5.3	0.6	7.8	1.1	6.7	0.9	9.8	1.5
Aug-20	5.6	0.7	7.6	0.8	7.0	1.3	9.3	1.0

Table 1.1 Period Average and YoY % Change

INDEX	Average July- August % changes			August over August % changes		
	2020-2021	2019-2020	2018-2019	2020	2019	2018
CPI (National)	8.74	9.44	6.42	8.21	10.49	6.17
CPI(Urban)	7.48	9.67	6.44	7.14	10.64	6.16
CPI(Rural)	10.71	9.07	6.39	9.86	10.27	6.20
SPI	12.72	10.49	3.56	11.73	12.09	2.91
WPI	3.24	13.67	16.52	3.26	14.06	16.72

Figure 1: UCPI Inflation YoY, Special Indices

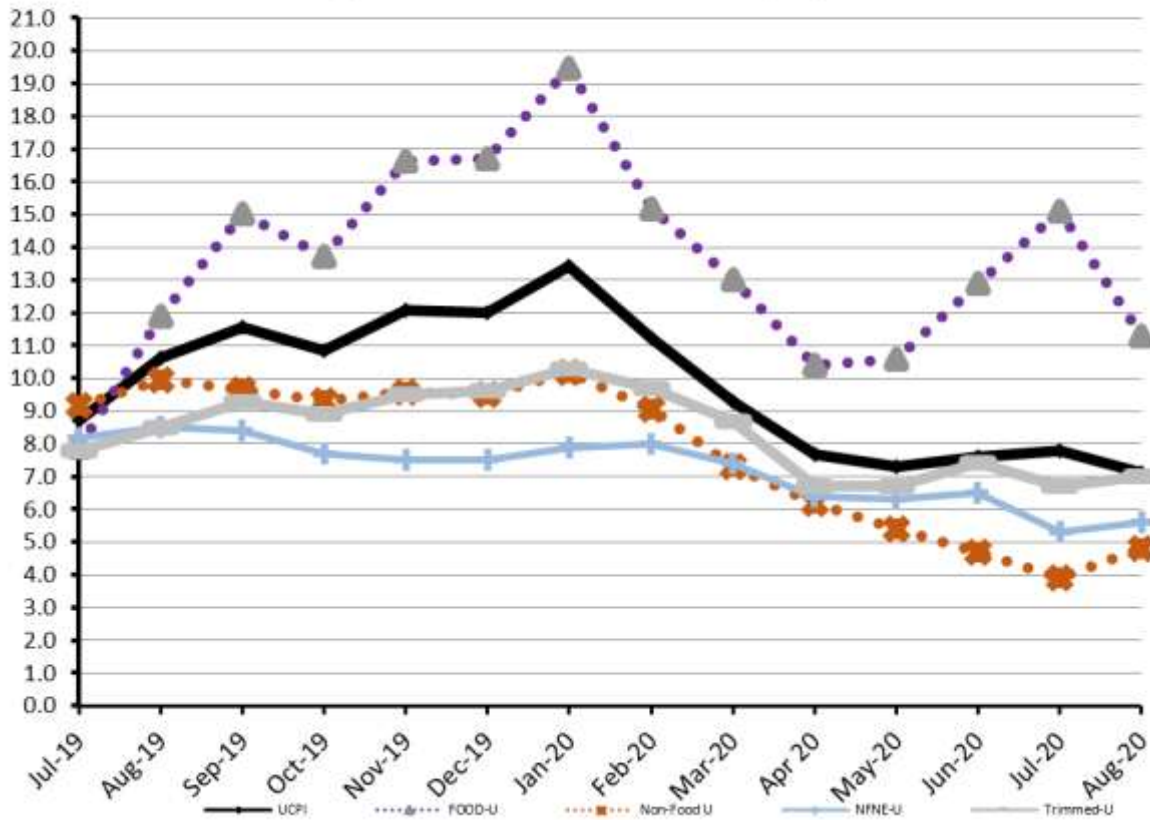


Figure 2: RCPI Inflation YoY, Special Indices

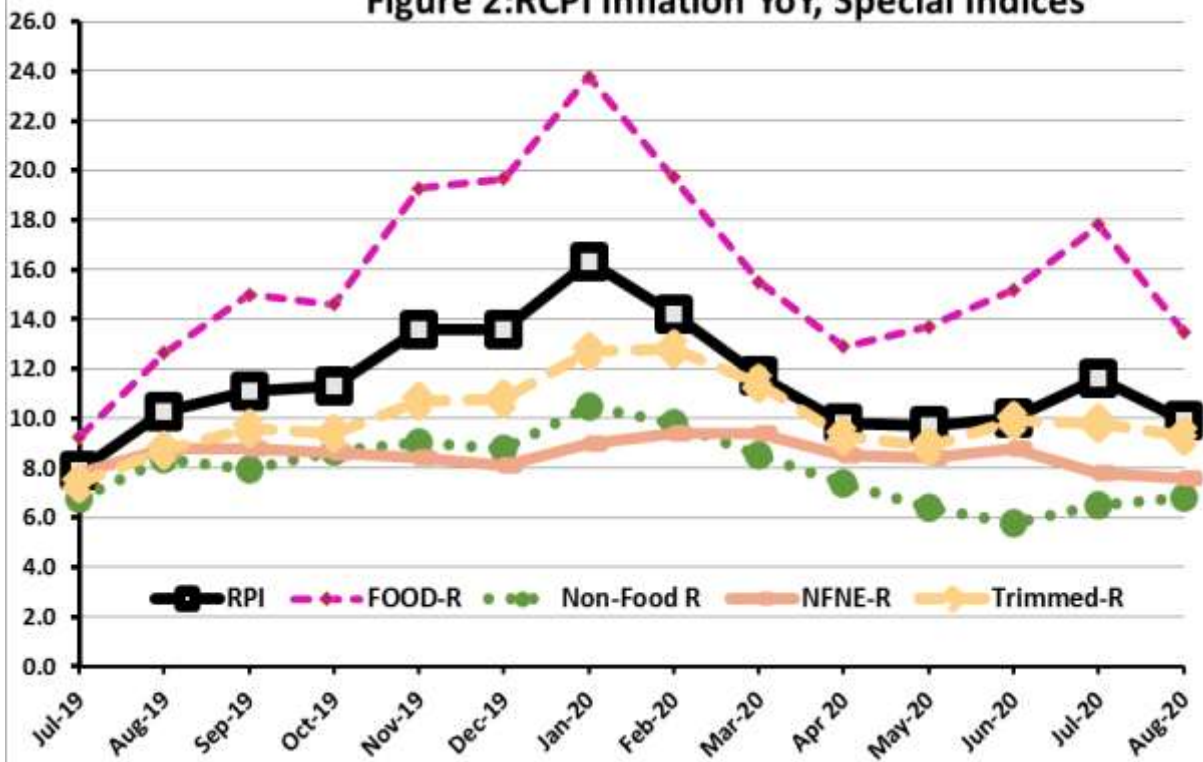


Figure 3: UCPI Inflation MoM, Special Indices

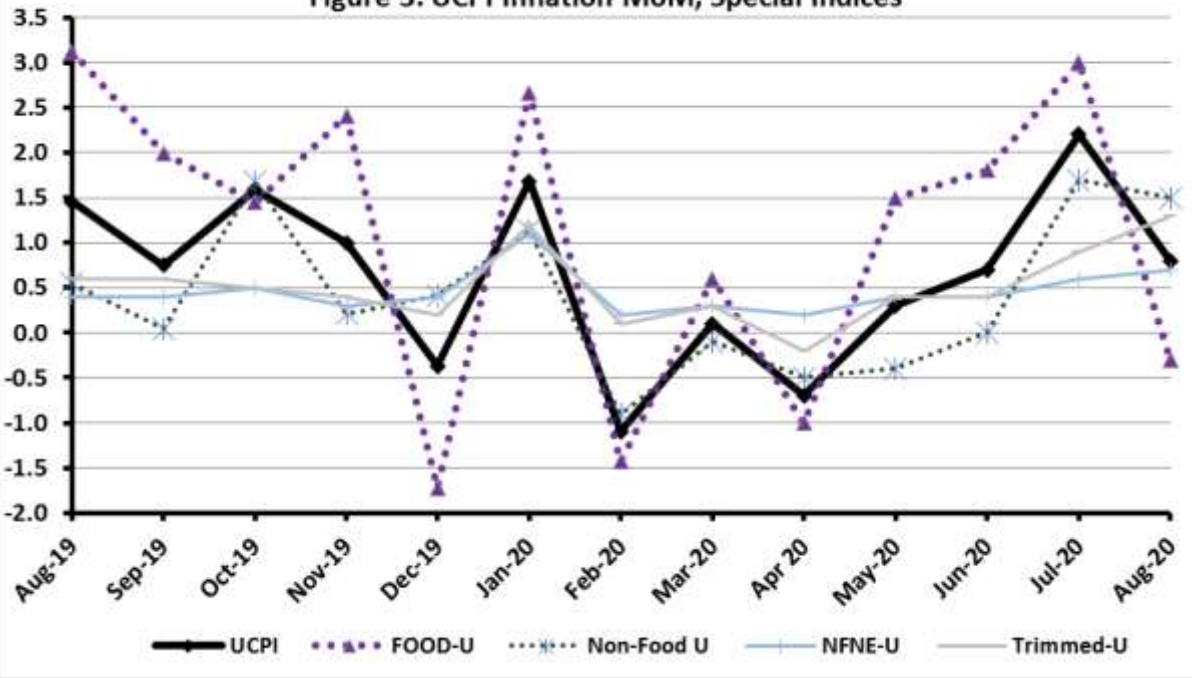


Figure 4: RPI Inflation MoM, Special Indices

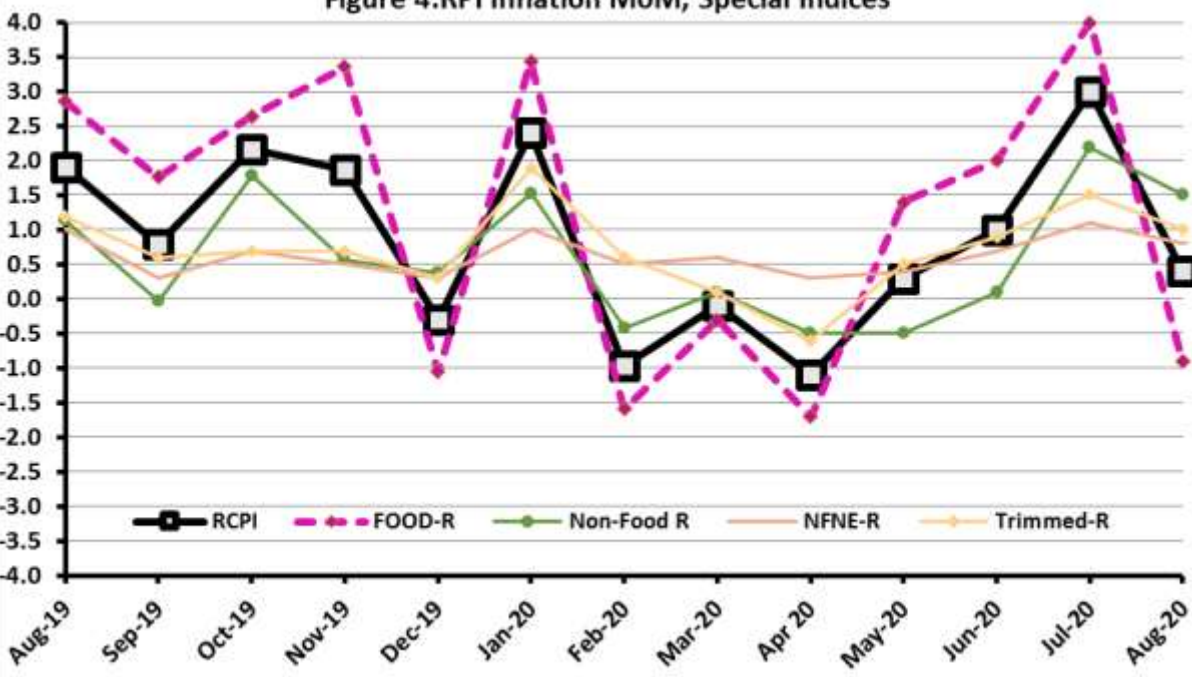


Figure 5: CPI Y.o.Y (National, Urban, Rural)

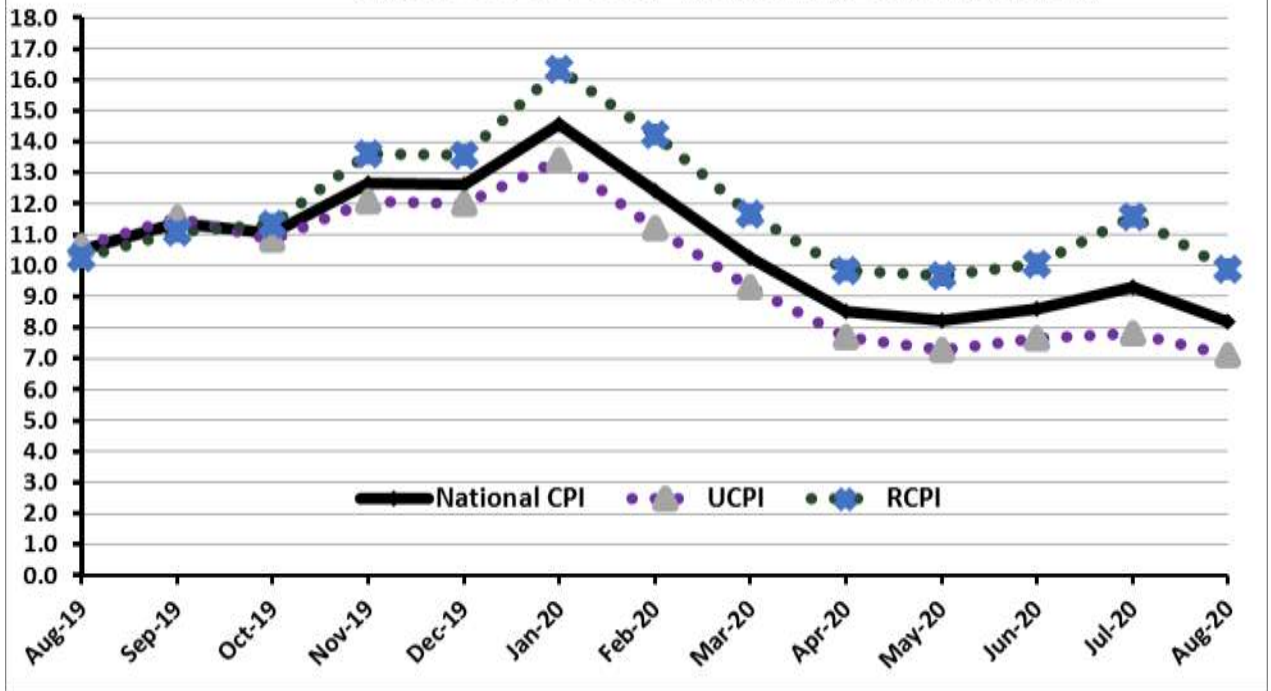
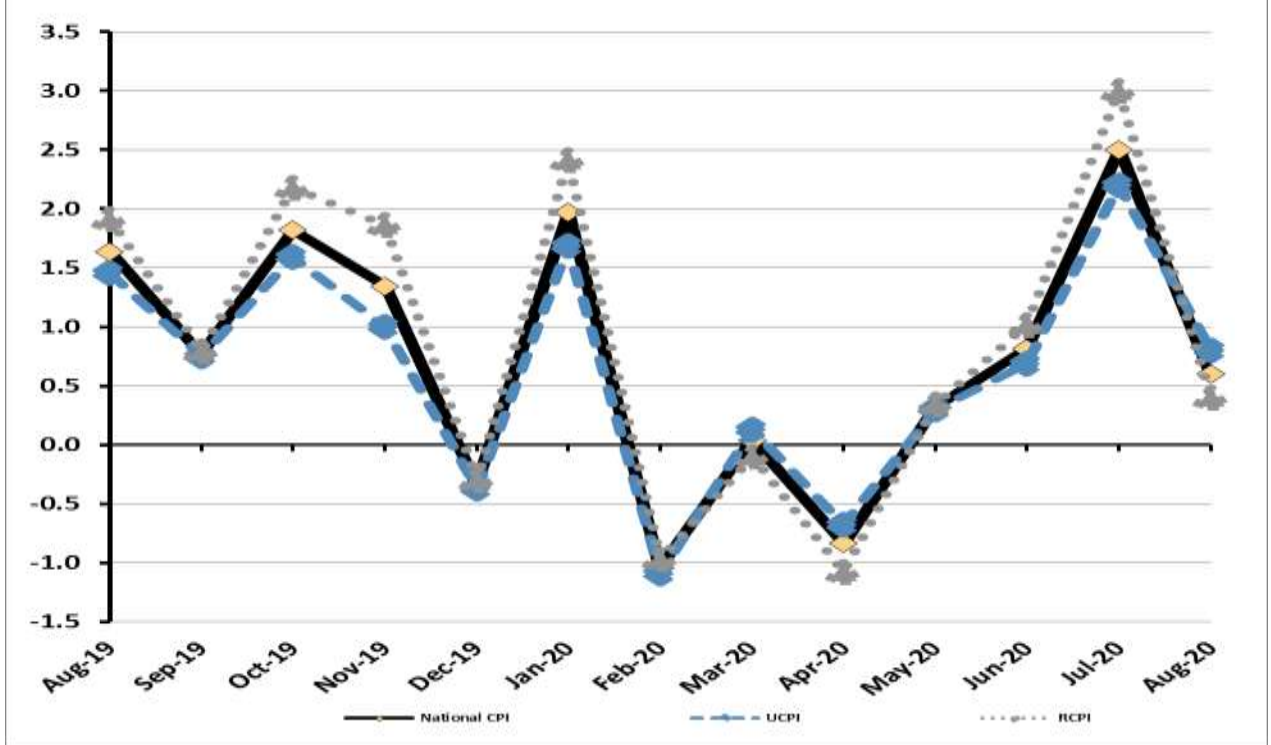


Figure 6: CPI M.o.M (National, Urban, Rural)



I. National Consumer Price Index (N-CPI)

The **National Consumer Price Index** of August 2020 is increased by **0.63%** over July 2020 and increased by **8.21%** over corresponding month of the last year i.e. August 2019.

Table 1 : Consumer Price Index (National) by Group of Commodities and Services (Base 2015-16)

No	Group	Group Weight (%)	Indices			% Change Aug 2020 Over		Impact (In % points) Aug 2020 Over	
			Aug 2020	July 2020	Aug 2019	July 2020	Aug 2019	July 2020	Aug 2019
	General	100.00	136.23	135.38	125.89	0.63	8.21	0.63	8.21
1.	Food & Non-alcoholic Bev.	34.58	138.87	140.11	123.02	-0.88	12.89	-0.32	4.36
	<i>Non-perishable Food Items</i>	29.60	138.53	137.39	120.85	0.83	14.63	0.25	4.16
	<i>Perishable Food Items</i>	4.99	140.92	156.27	135.89	-9.82	3.71	-0.57	0.20
2.	Alcoholic Bev. & Tobacco	1.02	141.69	140.29	133.91	1.00	5.81	0.01	0.06
3.	Clothing & Footwear	8.60	137.01	136.66	125.52	0.26	9.15	0.02	0.78
4.	Housing, Water, Electricity, Gas & Fuels	23.63	132.48	130.14	125.03	1.79	5.95	0.41	1.40
5.	Furnishing & Household Equipment Maintenance	4.10	131.28	130.44	122.14	0.65	7.49	0.03	0.30
6.	Health	2.79	143.07	142.09	132.85	0.69	7.69	0.02	0.23
7.	Transport	5.91	138.74	134.75	143.65	2.96	-3.42	0.17	-0.23
8.	Communication	2.21	106.98	106.96	106.67	0.01	0.28	0.00	0.01
9.	Recreation & Culture	1.59	121.40	121.01	117.30	0.32	3.49	0.00	0.05
10.	Education	3.79	142.47	142.40	141.12	0.05	0.95	0.00	0.04
11.	Restaurants & Hotels	6.92	134.45	132.60	124.54	1.40	7.96	0.10	0.55
12.	Miscellaneous	4.87	146.11	141.05	128.63	3.59	13.59	0.18	0.68

II. Urban Consumer Price Index (UCPI)

The **Urban Consumer Price Index** of Aug 2020 is increased by **0.81%** over July 2020 and increased by **7.14%** over corresponding month of the last year i.e. Aug 2019.

Table 2: Consumer Price Index (Urban) by Group of Commodities and Services (Base 2015-16)

No	Group	Group Weight (%)	Indices			% Change Aug 2020 Over		Impact (In % points) Aug 2020 Over	
			Aug 2020	July 2020	Aug 2019	July 2020	Aug 2019	July 2020	Aug 2019
	General	100.00	135.82	134.73	126.77	0.81	7.14	0.81	7.14
1.	Food & Non-alcoholic Bev.	30.42	137.90	138.88	123.19	-0.71	11.94	-0.22	3.53
	Non-perishable Food Items	25.97	136.93	135.81	120.58	0.82	13.56	0.22	3.35
	Perishable Food Items	4.46	143.57	156.81	138.38	-8.44	3.75	-0.44	0.18
2.	Alcoholic Bev.& Tobacco	0.85	149.80	148.36	141.93	0.97	5.54	0.01	0.05
3.	Clothing & Footwear	8.01	133.20	132.97	123.36	0.17	7.98	0.01	0.62
4.	Housing, Water, Electricity, Gas & Fuels	27.03	134.06	131.76	127.15	1.75	5.43	0.46	1.47
5.	Furnishing & Household Equipment Maintenance	4.09	130.64	130.01	123.05	0.48	6.17	0.02	0.24
6.	Health	2.31	142.89	141.55	133.97	0.95	6.66	0.02	0.16
7.	Transport	6.14	139.08	134.88	144.36	3.11	-3.66	0.19	-0.26
8.	Communication	2.35	108.22	108.22	107.84	0.00	0.35	0.00	0.01
9.	Recreation & Culture	1.73	119.36	118.86	116.23	0.42	2.69	0.01	0.04
10.	Education	4.88	145.07	144.98	143.62	0.06	1.01	0.00	0.06
11.	Restaurants & Hotels	7.41	133.37	130.92	123.22	1.87	8.24	0.13	0.59
12.	Miscellaneous	4.77	145.22	140.40	128.97	3.43	12.60	0.17	0.61

Main contributors to month-on-month and year-on-year percentage changes are given below and detail is given in Annexure A.

1. MONTH-ON-MONTH Top few commodities which varied from previous month are given below: -

Food Items

Increased: Sugar (13.53%), Wheat (11.95%), Onions (10.4%), Bakery and confectionary (6.65%), Potatoes (5.85%), Wheat flour (5.44%), Beans (5.01%), Milk fresh (4.79%), Spices (2.81%), Readymade food (2.22%) and Rice (0.31%).

Decreased: Chicken (36.45%), Tomatoes (31.83%), Fresh fruits (23.15%), Pulse moong (6.5%), vegetables (2.78%), Pulse mash (2.28%), Fish (1.87%), Gram whohe (1.78%), Eggs (1.33%), Pulse gram (1.29%), Besan (1.21%), Pulse masoor (0.98%), Vegetable ghee (0.86%) and cooking oil (0.59%).

Non-food Items

Increased: Electricity charges (11.61%), Transport services (5.41%), Cleaning and laundering (4.47%), Motor fuel (3.34%), Construction wage rates (1.44%), Medical tests (1.29%), and Household equipments (1.12%).

Decreased: Liquified Hydrocarbons (0.68%).

2. YEAR-ON-YEAR: Top few commodities which varied from previous year i.e. August 2019 are given below:-

Food Items

Increased: Potatoes (62.44%), Wheat (44.3%), Beans (40.4%), Spices (38.87%), Pulse moong (35.67%), Pulse mash (31.43%), Eggs (28.65%), Sugar (27.98%), Butter (25.64%), Wheat flour (23.38%), masoor (19.54%), Vegetable ghee (16.38%), Bakery and confectionary (15.74%), Milk fresh (14.86%), Mustard oil (14.59%), Meat (12.24%), Cooking oil (11.37%), Sweetmeat (10.21%), Tea (9.62%), Readymade food (8.8%), Beverages (7.26%), Rice (7.03%), Pulse gram (6.89%), Besan (6.42%), Gram whohe (4.42%), Cigarettes (4.18%) and vegetables (1.51%).

Decreased: Chicken (38.28%), Onions (33.02%), Fish (8.5%) and Fresh fruits (1.32%).

Non-food Items

Increased: Electricity charges (11.39%), Woolen cloth (11.38%), Cotton cloth (9.93%), Tailoring (9.57%), Furniture and furnishing (9.48%), Drugs and medicines (7.9%), Motor vehicle accessories (7.47%), Construction wage rates (6.81%), Medical tests(5.74%), Construction input items(4.99%), stationery(4.58%), Dental services(4.45%), House rent(4.29%), Household servant(3.43%), Transport services(3.07%).

Decreased: Motor fuel(10.25%).

III. Rural Consumer Price Index (RCPI)

The **Rural Consumer Price Index** of August 2020 is increased by **0.35%** over July 2020 and increased by **9.86%** over corresponding month of the last year i.e. August 2019.

Table 3: Consumer Price Index (Rural) by Group of Commodities and Services (Base 2015-16)

No	Group	Group Weight (%)	Indices			% Change Aug 2020 Over		Impact (In % points) Aug 2020 Over	
			Aug 2020	July 2020	Aug 2019	July 2020	Aug 2019	July 2020	Aug 2019
	General	100.00	136.84	136.36	124.56	0.35	9.86	0.35	9.86
1.	Food & Non-alcoholic Bev.	40.87	139.97	141.49	122.83	-1.07	13.95	-0.45	5.62
	Non-perishable Food Items	35.08	140.32	139.15	121.16	0.84	15.81	0.30	5.40
	Perishable Food Items	5.79	137.85	155.64	132.99	-11.43	3.65	-0.76	0.23
2.	Alcoholic Bev. & Tobacco	1.28	133.51	132.15	125.83	1.03	6.10	0.01	0.08
3.	Clothing & Footwear	9.48	141.86	141.36	128.27	0.35	10.59	0.03	1.03
4.	Housing, Water, Electricity, Gas & Fuels	18.49	128.98	126.58	120.36	1.90	7.16	0.32	1.28
5.	Furnishing & Household Equipment Maintenance	4.10	132.25	131.08	120.77	0.89	9.51	0.04	0.38
6.	Health	3.51	143.24	142.62	131.74	0.43	8.73	0.02	0.32
7.	Transport	5.56	138.18	134.53	142.48	2.71	-3.02	0.15	-0.19
8.	Communication	1.99	104.76	104.72	104.60	0.04	0.15	0.00	0.00
9.	Recreation & Culture	1.38	125.26	125.09	119.33	0.14	4.97	0.00	0.07
10.	Education	2.13	133.48	133.48	132.50	0.00	0.74	0.00	0.02
11.	Restaurants & Hotels	6.19	136.41	135.62	126.91	0.58	7.49	0.04	0.47
12.	Miscellaneous	5.02	147.38	141.98	128.13	3.80	15.02	0.20	0.78

Main contributors to month-on-month and year-on-year percentage changes are given below and detail is given in Annexure A.

- MONTH-ON-MONTH** Top few commodities which varied from previous month are given below: -

Food Items

Increased: Sugar (13.31%), Wheat (7.89%), Wheat Flour(4.36%), Potatoes (3.73%), Sweetmeat(2.63%), Milk fresh (1.79%), Rice (1.76%), Eggs (1.43%), Cigarettes (1.04%), Readymade Food (0.91%) and Meat (0.74%).

Decreased: Tomatoes (33.94%), Chicken (31.9%), Fresh fruits (25.42%), Pulse Moong (9.66%), Vegetables (8.66%), Pulse Mash (4.55%), Spices (3.51%), Pulse Gram (3.41%), Gram Whole (2.47%), Besan (1.94%), Pulse Masoor (1.57%) and Onions (0.4%).

Non-food Items

Increased: Electricity Charges (11.61%), Motor Fuels (3.55%), Transport Services (3.17%), Furniture and Furnishing (1.82%) and Plastic Products(1.58%).

Decreased: Liquefied Hydrocarbons (0.18%).

- YEAR-ON-YEAR:** Top few commodities which varied from previous year i.e. August 2019 are given below:-

Food Items

Increased: Potatoes (65.14%), Spices (48.79%), Wheat (41.14%), Beans (37.54%), Pulse Moong (33.34%), Eggs (30.36%), Pulse Mash (27.83%), Pulse Masoor (26.9%), Wheat Flour(26.22%), Sugar (25.53%), Vegetable ghee (20%), Rice (15.6%), Cooking oil (13.99%), Bakery and Confectionary (12.36%), Tomatoes (11.87%), Readymade Food (11.6%), Tea (9.18%), Milk fresh (8.17%), Besan (6.14%), Beverages (5.97%), Cigarettes(5.79%) and Pulse Gram (5.76%).

Decreased: Onions (38.68%), Chicken (26.99%), Vegetables (4.79%), Fresh fruits (2.22%), Fish (1.78%) and Gram Whole (0.92%).

Non-food Items

Increased: Water Supply (37.55%), Hosiry (17.8%), Cotton Cloth (15.31%), Plastic Products (12.59%), Furniture and Furnishing (12.56%), Electricity Charges (11.39%), Household Equipments (8.79%), Footwear (8.79%), Drugs and Medicines (8.66%), Medical Tests (8.65%), Construction Wage Rates (8.46%), Woolen Cloth (7.35%), Construction Input Items (6.53%), Tailoring (6.46%), Motor Vehicles Accessories (6.38%), Readymade Garments (6.33%), Transport Services (5.67%), House Rent (4.94%), Text Books (3.87%) and Motor Vehicles(2.71%).

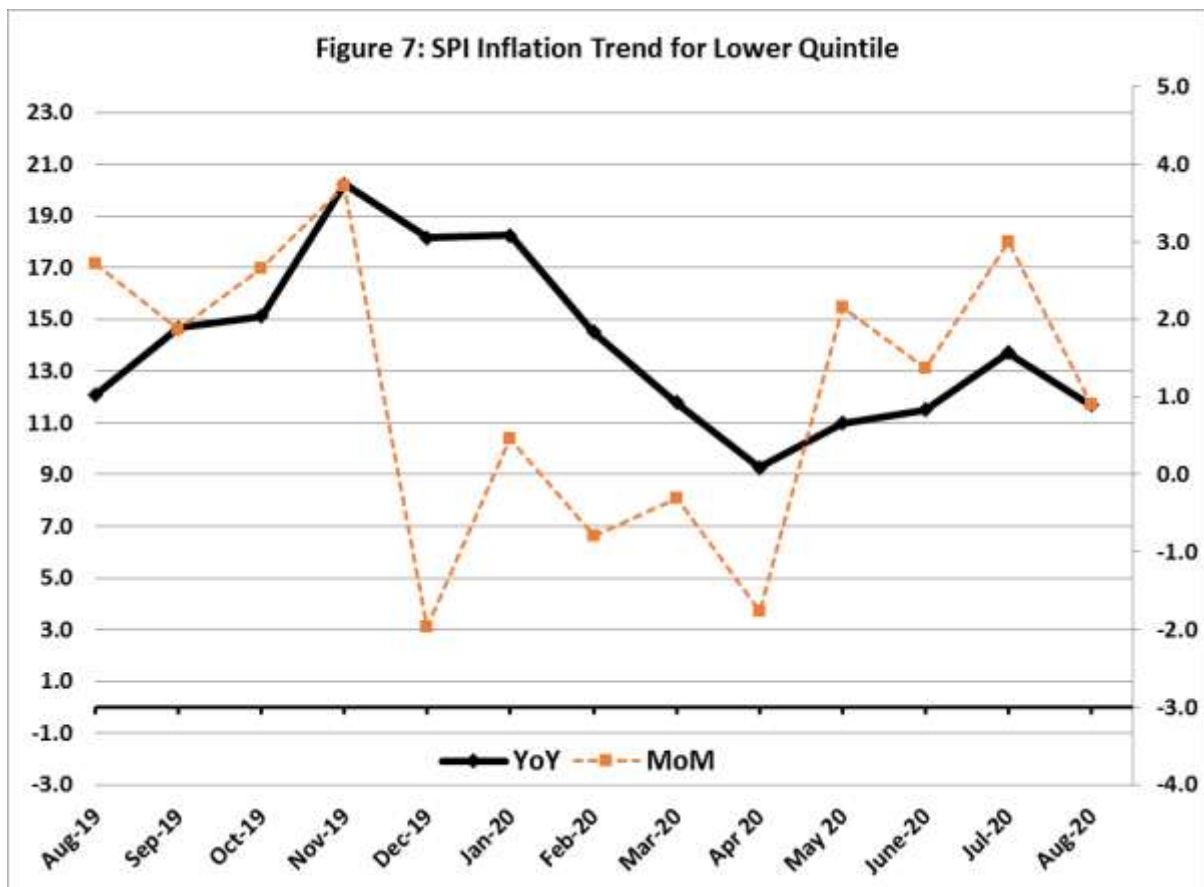
Decreased: Motor Fuels (10.55%) and Liquefied Hydrocarbons (5.47%).

IV. Sensitive Price Indicator

Quintile-wise percentage changes YoY and MoM are given below in Table 4. The series from August 2019 to August 2020 is also graphed below in Figure 7.

Table 4: Sensitive Price Indicator (Base 2015-16)					
Quintiles	Indices			% Change August 2020 Over	
	August 2020	July 2020	August 2019	July 2020	August 2019
1	140.95	139.66	126.15	0.92	11.73
2	135.55	134.23	121.84	0.98	11.25
3	137.28	136.22	124.48	0.78	10.28
4	133.98	133.07	122.27	0.68	9.58
5	135.27	134.34	126.19	0.69	7.20
Combined	134.57	133.50	123.85	0.80	8.66

Table 4.1 : Weekly Percentage Change of SPI During August-2020				
Quintiles	% Change with Previous week			
	06-08-2020	13-08-2020	20-08-2020	27-08-2020
Quintile 1	-0.33	-0.06	0.93	-0.08
Combined	-0.06	-0.22	0.96	-0.14



V. Wholesale Price Index

The Wholesale Price Index for August, 2020 increased by **1.27%** over July 2020. It increased by **3.26%** over the corresponding month of the last year. YoY and MoM movements, from August, 2019 to August, 2020 are also graphed below in Figure 8.

Table 5: Wholesale Price Index by Group of Commodities (Base 2015-16)									
No.	Group	Group Weight (%)	Indices			% Change August 2020 Over		Impact (In % points) August 2020 Over	
			Aug 20	July 20	Aug 19	July 20	Aug 19	July 20	Aug 19
	General	100.00	144.96	143.14	140.39	1.27	3.26	1.27	3.26
1.	Agriculture Forestry & Fishery	25.77	141.83	142.06	128.79	-0.16	10.13	-0.04	2.39
2.	Ores/Minerals, Elec., Gas & Water	12.01	165.44	161.11	159.39	2.69	3.80	0.36	0.52
3.	Food Products, Beverages & Tobacco, Textiles, Apparel & Leather Products	31.11	141.10	139.64	127.21	1.05	10.92	0.32	3.08
	i. Food Products, Beverages & Tobacco	20.07	139.45	137.23	120.86	1.62	15.38	0.31	2.66
	ii. Textiles & Apparels	10.33	145.83	145.76	140.72	0.05	3.63	0.01	0.38
	iii. Leather Products	0.71	118.88	118.88	110.18	0.00	7.90	0.00	0.04
4.	Other Transportable Goods	22.40	143.01	138.95	166.83	2.92	-14.28	0.64	-3.80
5.	Metal Product, Machinery & Equipment	8.72	144.73	144.85	127.59	-0.08	13.43	-0.01	1.06

Main contributors to month-on-month and year-on-year percentage changes are given below and detail is given in Annexure C.

1. MONTH-ON-MONTH Top few commodities which varied from previous month are given below: -

Increased: Sugar Refined (11.85%), Wheat (10.55%), Kerosene Oil (10.06%), Diesel Oil (8.52%), Wheat Flour(8.09%), Electrical Energy (7%), Sugar Confectionary (6.12%), Rice (5.91%), Motor Spirit (4.01%), Spices(3.6%), Potatoes(2.96%), Unmanufactured Tobacco (2.16%), Paints & Varnishes (1.91%), Blankets (1.8%), Woven Fabrics(1.62%) and Bricks, Blocks & Tiles(1.54%).

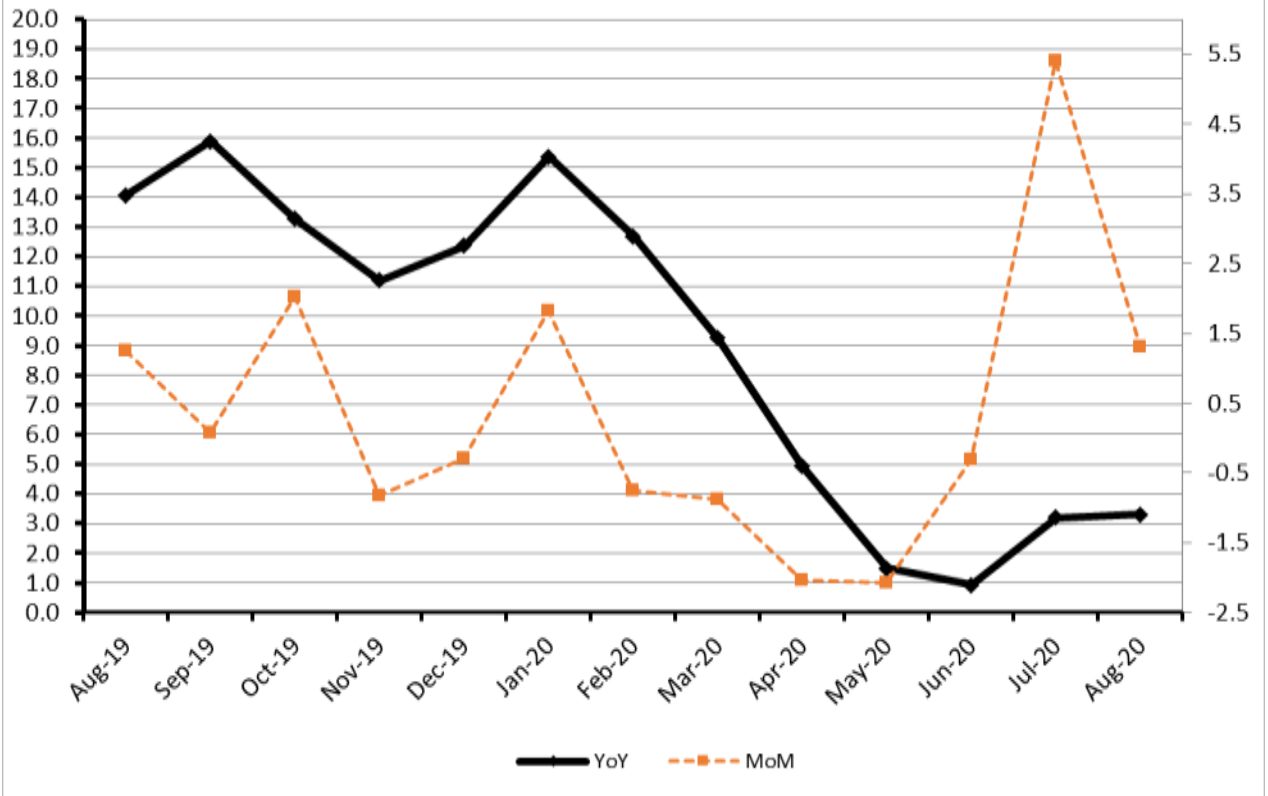
Decreased: Fresh Fruits (8.25%), Vegetables (3.89%), Cotton Seeds (2.01%), Eggs (0.91%), and Pulses (0.9%).

2. YEAR-ON-YEAR Top few commodities which varied from previous year i.e. July, 2019 are given below: -

Increased: Spices (77.96%), Potatoes(53.47%), Wheat (46.63%), Sugar Confectionary (38.48%), Cotton Fabrics (37.68%), Wheat Flour(36.46%), Eggs (35.59%), Sugar Refined (27.85%), Unmanufactured Tobacco (24.51%), Footwear (21.71%), Raw Milk from Bovine Animals (19.13%), Cultivators (19.1%), Meat of Animals (17%), Fresh Fruits (15.16%), Rice (14.86%), Pulses (14.73%), Vegetable Ghee(13%), Medicines (12.16%), Hosiery Products (11.83%), Cotton Seeds (10.85%) and Electrical Energy (10.83%).

Decreased: Kerosene Oil (37.13%), Diesel Oil (29.13%) and Fertilizers (7.41%).

Figure 8: WPI Inflation



Annexure A:CPI (Urban) Index Numbers by Commodity Groups & Commodities (2015-16=100)

Item and Specification	Weight	Index Numbers			% Change in Aug 2020 over	
		Aug 20	Jul 20	Aug 19	Jul 2020	Aug 2019
General	100.0000	135.82	134.73	126.77	+ 0.81	+ 7.14
Food and non-alcoholic Bevera	30.4215	137.90	138.88	123.19	- 0.71	+ 11.94
01 Wheat	0.6120	155.93	139.29	108.06	+ 11.95	+ 44.30
02 Wheat flour	3.0075	135.30	128.32	109.66	+ 5.44	+ 23.38
03 Wheat products	0.0936	138.26	129.40	112.56	+ 6.85	+ 22.83
04 Besan	0.0830	116.52	117.95	109.49	- 1.21	+ 6.42
05 Rice	1.1804	136.28	135.86	127.33	+ 0.31	+ 7.03
06 Bakery and confectionary	0.4770	135.60	127.15	117.16	+ 6.65	+ 15.74
07 Nimco	0.1224	131.66	129.75	115.50	+ 1.47	+ 13.99
08 Meat	2.0411	153.64	153.62	136.89	+ 0.01	+ 12.24
09 Chicken	1.3631	89.93	141.50	145.70	- 36.45	- 38.28
10 Fish	0.3855	111.48	113.60	121.83	- 1.87	- 8.50
11 Milk fresh	7.1070	131.39	125.39	114.39	+ 4.79	+ 14.86
12 Milk products	0.6407	134.08	128.05	117.00	+ 4.71	+ 14.60
13 Milk powder	0.3106	131.01	130.29	119.17	+ 0.55	+ 9.94
14 Eggs	0.5083	145.10	147.06	112.79	- 1.33	+ 28.65
15 Butter	0.0932	171.57	171.57	136.56	+ 0.00	+ 25.64
16 Mustard oil	0.0120	127.61	126.67	111.36	+ 0.74	+ 14.59
17 Cooking oil	1.1016	142.03	142.88	127.53	- 0.59	+ 11.37
18 Vegetable ghee	1.0324	147.32	148.60	126.59	- 0.86	+ 16.38
19 Dry fruits	0.3299	130.72	130.37	117.74	+ 0.27	+ 11.02
20 Fresh fruits	1.4363	116.43	151.50	117.99	- 23.15	- 1.32
21 Pulse masoor	0.1624	102.40	103.41	85.66	- 0.98	+ 19.54
22 Pulse moong	0.1697	143.36	153.33	105.67	- 6.50	+ 35.67
23 Pulse mash	0.1152	99.52	101.84	75.72	- 2.28	+ 31.43
24 Pulse gram	0.1660	114.17	115.66	106.81	- 1.29	+ 6.89
25 Gram whohe	0.0912	122.84	125.07	117.64	- 1.78	+ 4.42
26 Beans	0.0408	156.01	148.56	111.12	+ 5.01	+ 40.40
27 Potatoes	0.4496	255.49	241.36	157.28	+ 5.85	+ <u>62.44</u>
28 Onions	0.5928	107.74	97.59	160.85	+ 10.40	- 33.02
29 Tomatoes	0.3459	134.98	198.00	135.99	- 31.83	- 0.74
30 Fresh vegetables	1.5306	139.51	143.50	137.43	- 2.78	+ 1.51
31 Sugar	1.1130	153.66	135.35	120.07	+ 13.53	+ 27.98
32 Gur	0.0379	140.02	137.48	123.81	+ 1.85	+ 13.09
33 Honey	0.1017	128.22	124.39	113.38	+ 3.08	+ 13.09
34 Sweetmeat	0.3535	144.06	143.37	130.71	+ 0.48	+ 10.21
35 Ice cream	0.1044	136.32	133.79	119.23	+ 1.89	+ 14.33
36 Condiments and Spices	1.3340	194.04	188.74	139.73	+ 2.81	+ 38.87
37 Dessert preparation	0.0419	125.85	125.30	112.62	+ 0.44	+ 11.75
38 Tea	0.8427	140.74	140.74	128.39	+ 0.00	+ 9.62
39 Beverages	0.8906	127.61	126.99	118.97	+ 0.49	+ 7.26
Alcoholic Beverages, Tobacco	0.8540	149.80	148.36	141.93	+ 0.97	+ 5.54
40 Cigarettes	0.7167	139.96	139.07	134.35	+ 0.64	+ 4.18
41 Pan prepared	0.1373	201.15	196.90	181.46	+ 2.16	+ 10.85
Clothing and footwear	8.0096	133.20	132.97	123.36	+ 0.17	+ 7.98
42 Cotton cloth	2.2227	137.16	137.01	124.77	+ 0.11	+ 9.93
43 Woolen cloth	0.8361	128.48	128.47	115.35	+ 0.01	+ 11.38
44 Readymade garments	1.3196	130.56	130.49	126.21	+ 0.05	+ 3.45
45 Woolen readymade garments	0.4307	126.88	126.88	115.81	+ 0.00	+ 9.56
46 Tailoring	1.0741	141.42	140.83	129.07	+ 0.42	+ 9.57
47 Hosiry	0.4070	129.98	129.25	123.52	+ 0.56	+ 5.23
48 Dopatta	0.1713	125.09	124.79	114.86	+ 0.24	+ 8.91
49 Cleaning and laundring	0.0665	137.55	131.67	126.08	+ 4.47	+ 9.10
50 Footware	1.4816	129.76	129.74	122.07	+ 0.02	+ 6.30
Housing, water, Elec., Gas an	27.0332	134.06	131.76	127.15	+ 1.75	+ 5.43
51 House rent	19.2558	132.08	132.08	126.65	+ 0.00	+ 4.29
52 Construcion input items	0.3765	143.57	143.20	136.74	+ 0.26	+ 4.99
53 Construction wage rates	0.2025	151.71	149.55	142.04	+ 1.44	+ 6.81
54 Water supply	0.5269	152.62	143.78	122.55	+ 6.15	+ 24.54
55 Garbage collection	0.1064	169.20	167.30	145.38	+ 1.14	+ 16.38
56 Electricity charges	4.5562	120.58	108.04	108.25	+ 11.61	+ 11.39
57 Gas charges	1.0807	216.94	216.94	216.94	+ 0.00	+ 0.00
58 Liquified Hydrocarbons	0.5064	129.23	130.12	128.04	- 0.68	+ 0.93
59 Solid Fuel	0.4218	114.60	114.45	108.75	+ 0.13	+ 5.38
Furnishing and household equi	4.0937	130.64	130.01	123.05	+ 0.48	+ 6.17

Annexure A:CPI (Urban) Index Numbers by Commodity Groups & Commodities (2015-16=100)

Item and Specification	Weight	Index Numbers			% Change in Aug 2020 over			
		Aug 20	Jul 20	Aug 19	Jul 2020	Aug 2019		
60 Furniture and furnishing	0.4750	131.85	130.99	120.43	+	0.66	+	9.48
61 Carpets	0.0308	112.09	112.03	107.32	+	0.05	+	4.44
62 Household textiles	0.3420	126.95	126.11	122.53	+	0.67	+	3.61
63 Household equipments	1.0032	131.38	129.93	121.61	+	1.12	+	8.03
64 Plastic products	0.0536	118.25	117.68	114.39	+	0.48	+	3.37
65 Major tools & equipments	0.0084	127.98	125.72	117.82	+	1.80	+	8.62
66 Washing soap/detergents/match	1.4112	130.36	130.10	122.93	+	0.20	+	6.04
67 Household servant	0.7695	132.71	132.71	128.31	+	0.00	+	3.43
Health	2.3098	142.89	141.55	133.97	+	0.95	+	6.66
68 Drugs and medicines	1.0735	142.25	141.05	131.84	+	0.85	+	7.90
69 Therapeutic Appliances and Eq	0.0054	113.06	112.42	106.58	+	0.57	+	6.08
70 Doctor (MBBS) clinic fee	0.4044	174.13	172.10	157.92	+	1.18	+	10.26
71 Dental services	0.0156	120.43	118.91	115.30	+	1.28	+	4.45
72 Medical tests	0.2367	128.31	126.68	121.34	+	1.29	+	5.74
73 Hospitals services	0.5742	128.99	127.99	127.04	+	0.78	+	1.53
Transport	6.1368	139.08	134.88	144.36	+	3.11	-	3.66
74 Motor vehicles	0.8097	148.34	147.76	144.24	+	0.39	+	2.84
75 Motor vehicle accessories	0.1941	131.46	131.04	122.32	+	0.32	+	7.47
76 Motor fuel	2.9088	145.93	141.21	162.60	+	3.34	-	10.25
77 Mechanical services	0.4290	131.58	131.11	121.22	+	0.36	+	8.55
78 Motor vehicle tax	0.0482	126.72	126.72	126.72	+	0.00	+	0.00
79 Transport services	1.7470	126.42	119.93	122.65	+	5.41	+	3.07
Communication	2.3536	108.22	108.22	107.84	+	0.00	+	0.35
80 Postal services	0.0190	147.05	147.05	147.05	+	0.00	+	0.00
81 Communication apparatus	0.4524	118.75	118.75	116.73	+	0.00	+	1.73
82 Communication Services	1.8822	105.30	105.30	105.30	+	0.00	+	0.00
Recreation and culture	1.7301	119.36	118.86	116.23	+	0.42	+	2.69
83 Recreation and culture	0.6478	111.23	110.71	108.11	+	0.47	+	2.89
84 Text books	0.6655	119.02	118.66	116.83	+	0.30	+	1.87
85 Newspapers	0.0716	151.55	151.55	151.55	+	0.00	+	0.00
86 stationery	0.3452	128.60	127.78	122.97	+	0.64	+	4.58
Education	4.8807	145.07	144.98	143.62	+	0.06	+	1.01
87 Education	4.8807	145.07	144.98	143.62	+	0.06	+	1.01
Restaurants and hotels	7.4050	133.37	130.92	123.22	+	1.87	+	8.24
88 Readymade food	5.5235	133.47	130.57	122.67	+	2.22	+	8.80
89 Marriage Hall Charges	1.7514	134.60	133.41	125.79	+	0.89	+	7.00
90 Accommodation Services	0.1301	112.72	112.40	112.07	+	0.28	+	0.58
Misc. goods and services	4.7720	145.22	140.40	128.97	+	3.43	+	12.60
91 Personal Grooming Services	0.8001	130.63	128.38	122.08	+	1.75	+	7.00
92 Electrical Appliances for Per	0.0465	118.32	116.91	115.37	+	1.21	+	2.56
93 Appliances/Articles/Products	2.9807	130.58	128.69	120.74	+	1.47	+	8.15
94 Personal Effects n.e.c.	0.9447	205.06	188.67	161.43	+	8.69	+	27.03

Annexure B:CPI (Rural) Index Numbers by Commodity Groups & Commodities (2015-16=100)

Item and Specification	Weight	Index Numbers			% Change in Aug 2020 over	
		Aug 20	Jul 20	Aug 19	Jul 2020	Aug 2019
General	100.0000	136.84	136.36	124.56	+ 0.35	+ 9.86
Food and non-alcoholic Beverage	40.8668	139.97	141.49	122.83	- 1.07	+ 13.95
01 Wheat	3.4736	151.71	140.61	107.49	+ 7.89	+ 41.14
02 Wheat Flour	3.4297	138.42	132.64	109.67	+ 4.36	+ 26.22
03 Wheat Products	0.1068	136.90	128.56	114.05	+ 6.49	+ 20.04
04 Besan	0.0728	119.29	121.65	112.39	- 1.94	+ 6.14
05 Rice	1.5501	177.04	173.97	153.15	+ 1.76	+ 15.60
06 Bakery and Confectionary	0.3702	130.76	129.46	116.38	+ 1.00	+ 12.36
07 Nimco	0.0774	118.45	118.41	113.42	+ 0.03	+ 4.43
08 Meat	1.7146	151.37	150.26	137.04	+ 0.74	+ 10.46
09 Chicken	1.4641	101.65	149.26	139.22	- 31.90	- 26.99
10 Fish	0.2640	120.53	120.92	122.71	- 0.32	- 1.78
11 Milk fresh	10.3803	128.41	126.15	118.71	+ 1.79	+ 8.17
12 Milk products	0.9624	127.20	125.09	120.60	+ 1.69	+ 5.47
13 Milk powder	0.1062	124.83	124.44	115.26	+ 0.31	+ 8.30
14 Eggs	0.5665	143.57	141.54	110.13	+ 1.43	+ 30.36
15 Butter	0.3333	133.29	132.82	120.95	+ 0.35	+ 10.20
16 Mustard oil	0.0136	130.17	129.65	117.35	+ 0.40	+ 10.92
17 Cooking oil	0.6011	151.14	151.09	132.59	+ 0.03	+ 13.99
18 Vegetable ghee	2.3764	158.79	158.85	132.32	- 0.04	+ 20.00
19 Dry fruits	0.2496	141.45	141.30	125.57	+ 0.11	+ 12.65
20 Fresh fruits	1.4505	115.95	155.47	118.58	- 25.42	- 2.22
21 Pulse Masoor	0.2076	109.35	111.09	86.17	- 1.57	+ 26.90
22 Pulse Moong	0.2510	149.05	164.98	111.78	- 9.66	+ 33.34
23 Pulse Mash	0.1465	99.68	104.43	77.98	- 4.55	+ 27.83
24 Pulse Gram	0.2751	112.86	116.84	106.71	- 3.41	+ 5.76
25 Gram Whole	0.1116	114.94	117.85	116.01	- 2.47	- 0.92
26 Beans	0.0896	166.25	165.51	120.87	+ 0.45	+ 37.54
27 Potatoes	0.7437	277.55	267.56	168.07	+ 3.73	+ <u>65.14</u>
28 Onions	0.8965	91.55	91.92	149.31	- 0.40	- 38.68
29 Tomatoes	0.5069	133.08	201.46	118.96	- 33.94	+ 11.87
30 Fresh Vegetables	2.0947	117.03	128.13	122.92	- 8.66	- 4.79
31 Sugar	2.0296	153.99	135.90	122.67	+ 13.31	+ 25.53
32 Gur	0.1522	143.26	138.83	129.03	+ 3.19	+ 11.03
33 Honey	0.0296	125.88	125.29	118.92	+ 0.47	+ 5.85
34 Sweetmeat	0.3967	131.40	128.03	120.71	+ 2.63	+ 8.86
35 Ice Cream	0.0568	132.99	128.81	119.16	+ 3.25	+ 11.61
36 Condiments and Spices	1.4919	185.58	192.34	124.73	- 3.51	+ 48.79
37 Dessert Preparation	0.0133	122.30	121.14	110.93	+ 0.96	+ 10.25
38 Tea	1.2566	137.87	137.87	126.28	+ 0.00	+ 9.18
39 Beverages	0.5537	128.25	127.49	121.03	+ 0.60	+ 5.97
Alcoholic Beverages, Tobacco	1.2786	133.51	132.15	125.83	+ 1.03	+ 6.10
40 Cigarettes	1.2364	132.38	131.02	125.14	+ 1.04	+ 5.79
41 Pan Prepared	0.0422	166.69	165.42	146.13	+ 0.77	+ 14.07
Clothing and footwear	9.4826	141.86	141.36	128.27	+ 0.35	+ 10.59
42 Cotton Cloth	2.8381	157.33	157.31	136.44	+ 0.01	+ 15.31
43 Woolen Cloth	1.0959	129.91	129.07	121.01	+ 0.65	+ 7.35
44 Readymade Garments	1.1345	134.72	134.45	126.70	+ 0.20	+ 6.33
45 Woolen Readymade Garments	0.5401	130.27	130.27	119.69	+ 0.00	+ 8.84
46 Tailoring	1.2999	139.24	137.63	130.79	+ 1.17	+ 6.46
47 Hosiry	0.4322	162.61	161.19	138.04	+ 0.88	+ 17.80
48 Dopatta	0.2078	134.29	133.09	121.30	+ 0.90	+ 10.71
49 Cleaning and Laundering	0.0176	138.61	135.51	117.70	+ 2.29	+ 17.77
50 Footware	1.9165	131.22	130.98	120.62	+ 0.18	+ 8.79
Housing, water, Elec., Gas an	18.4853	128.98	126.58	120.36	+ 1.90	+ 7.16
51 House Rent	8.6110	132.21	132.21	125.99	+ 0.00	+ 4.94
52 Construction Input Items	0.6306	121.88	120.84	114.41	+ 0.86	+ 6.53
53 Construction Wage Rates	0.2526	151.57	150.88	139.75	+ 0.46	+ 8.46
54 Water Supply	0.0645	211.83	211.83	154.00	+ 0.00	+ 37.55
55 Garbage Collection	0.0080	142.31	142.31	132.05	+ 0.00	+ 7.77
56 Electricity Charges	3.4431	120.58	108.04	108.25	+ 11.61	+ 11.39
57 Liquified Hydrocarbons	0.9994	118.33	118.54	125.18	- 0.18	- 5.47
58 Solid Fuel	4.4761	130.10	130.01	116.98	+ 0.07	+ 11.22
Furnishing and household equi	4.1031	132.25	131.08	120.77	+ 0.89	+ 9.51
59 Furniture and Furnishing	0.5786	136.81	134.36	121.54	+ 1.82	+ 12.56

Annexure B:CPI (Rural) Index Numbers by Commodity Groups & Commodities (2015-16=100)

Item and Specification	Weight	Index Numbers			% Change in Aug 2020 over	
		Aug 20	Jul 20	Aug 19	Jul 2020	Aug 2019
60 Household Textiles	0.4382	128.37	128.09	118.96	+ 0.22	+ 7.91
61 Household Equipments	1.2774	138.68	137.58	127.48	+ 0.80	+ 8.79
62 Plastic Products	0.0776	145.94	143.67	129.62	+ 1.58	+ 12.59
63 Major Tools and Equipments	0.0324	119.69	118.45	113.51	+ 1.05	+ 5.44
64 Washing Soaps, Detergents and	1.6989	126.48	125.52	115.65	+ 0.76	+ 9.36
Health	3.5141	143.24	142.62	131.74	+ 0.43	+ 8.73
65 Drugs and Medicines	1.5792	144.12	143.05	132.64	+ 0.75	+ 8.66
66 Doctor Clinic Fee	0.5128	169.48	168.64	145.20	+ 0.50	+ 16.72
67 Dental Services	0.0181	122.97	122.97	112.95	+ 0.00	+ 8.87
68 Medical Tests	0.3967	145.50	145.37	133.92	+ 0.09	+ 8.65
69 Hospitals Services	1.0073	127.98	127.98	122.95	+ 0.00	+ 4.09
Transport	5.5580	138.18	134.53	142.48	+ 2.71	- 3.02
70 Motor Vehicles	0.7305	129.14	128.17	125.73	+ 0.76	+ 2.71
71 Motor Vehicles Accessories	0.1572	136.08	135.85	127.92	+ 0.17	+ 6.38
72 Motor Fuels	2.4932	144.91	139.94	162.00	+ 3.55	- 10.55
73 Mechanical Services	0.3645	153.45	153.45	146.72	+ 0.00	+ 4.59
74 Motor Vehicle Tax	0.0174	127.98	127.98	127.98	+ 0.00	+ 0.00
75 Transport Services	1.7952	129.70	125.71	122.74	+ 3.17	+ 5.67
Communication	1.9940	104.76	104.72	104.60	+ 0.04	+ 0.15
76 Postal Services	0.0070	149.43	149.43	149.43	+ 0.00	+ 0.00
77 Communication Apparatus	0.3362	119.22	118.95	118.27	+ 0.23	+ 0.80
78 Communication Services	1.6508	101.63	101.63	101.63	+ 0.00	+ 0.00
Recreation and culture	1.3764	125.26	125.09	119.33	+ 0.14	+ 4.97
79 Recreation and Culture	0.4763	129.32	129.12	121.67	+ 0.15	+ 6.29
80 Text Books	0.5047	113.87	113.59	109.63	+ 0.25	+ 3.87
81 Newspapers	0.0230	161.68	161.68	161.68	+ 0.00	+ 0.00
82 Stationery	0.3724	133.27	133.27	126.88	+ 0.00	+ 5.04
Education	2.1342	133.48	133.48	132.50	+ 0.00	+ 0.74
83 Education	2.1342	133.48	133.48	132.50	+ 0.00	+ 0.74
Restaurants and hotels	6.1895	136.41	135.62	126.91	+ 0.58	+ 7.49
84 Readymade Food	3.8001	143.29	142.00	128.40	+ 0.91	+ 11.60
85 Marriage Hall Charges	2.2525	126.93	126.93	125.92	+ 0.00	+ 0.80
86 Accommodation Services	0.1369	101.59	101.59	101.59	+ 0.00	+ 0.00
Misc. goods and services	5.0174	147.38	141.98	128.13	+ 3.80	+ 15.02
87 Personal Grooming Services	1.5363	142.09	139.16	129.57	+ 2.11	+ 9.66
88 Appliances/Articles/Products	2.2746	123.79	123.05	114.47	+ 0.60	+ 8.14
89 Personal Effects n.e.c.	1.2065	198.58	181.27	152.07	+ 9.55	+ 30.58

Annexure C: Wholesale Price Indices by Major Groups & Commodities

(2015-16=100)

Item and Specification	Weight	Index Numbers			% Change in Aug 2020 over			
		Aug 20	Jul 20	Aug 19	Jul 2020	Aug 2019		
General	100.0000	144.96	143.14	140.39	+	1.27	+	3.26
Agriculture Forestry & Fisher	25.7674	141.83	142.06	128.79	-	0.16	+	10.13
001 Wheat	0.6297	155.66	140.80	106.16	+	10.55	+	46.63
002 Maize	0.6764	139.84	138.38	133.40	+	1.06	+	4.83
003 Rice	2.4413	161.84	152.81	140.90	+	5.91	+	14.86
004 Sorghum / Jowar	0.0214	206.45	210.78	158.56	-	2.05	+	30.20
005 Millet / Bajra	0.0374	127.38	126.54	143.96	+	0.66	-	11.52
006 Vegetables	1.2441	154.61	160.87	148.90	-	3.89	+	3.83
007 Fresh Fruits	1.5144	143.98	156.93	125.03	-	8.25	+	15.16
008 Dry Fruits	0.2478	130.95	130.38	123.86	+	0.44	+	5.72
009 Cotton Seeds	1.1511	132.15	134.86	119.21	-	2.01	+	10.85
010 Other Oil Seeds	0.0722	137.46	135.64	126.87	+	1.34	+	8.35
011 Edible Roots / Potatoes	0.2540	313.59	304.56	204.33	+	2.96	+	53.47
012 Stimulant & Spice Crops	0.1634	330.53	306.52	221.44	+	7.83	+	49.26
013 Pulses	0.4901	120.31	121.40	104.86	-	0.90	+	14.73
014 Sugar Crops	1.0725	129.46	122.32	112.02	+	5.84	+	15.57
015 Fibre Crops	5.3169	145.46	145.46	152.05	+	0.00	-	4.33
016 Unmanufactured Tobacco	0.0742	197.99	193.80	159.02	+	2.16	+	24.51
017 Poultry	0.5633	85.83	140.86	132.76	-	39.07	-	35.35
018 Raw Milk from Bovine Animals	7.0279	131.14	129.67	110.08	+	1.13	+	19.13
019 Eggs	0.5034	143.45	144.77	105.80	-	0.91	+	35.59
020 Raw Animal Materials / Wool	0.0351	105.29	105.39	105.16	-	0.09	+	0.12
021 Hides, Skins & Fur Skins, Raw	0.4834	38.15	38.60	34.78	-	1.17	+	9.69
022 Fuel Wood in Logs	0.0179	116.21	115.96	102.91	+	0.22	+	12.92
023 Fish Live Fresh or Chilled	1.7295	154.34	154.34	146.42	+	0.00	+	5.41
Ores/Minerals, Elec., Gas & W	12.0069	165.44	161.11	159.39	+	2.69	+	3.80
024 Coal not Agglomerated	0.7508	75.79	75.79	82.17	+	0.00	-	7.76
025 Natural Gas Liquified	5.7065	195.59	195.70	195.96	-	0.06	-	0.19
026 Salt & Pure Sodium Chloride	0.0584	162.33	161.88	145.31	+	0.28	+	11.71
027 Electrical Energy	5.4912	146.40	136.82	132.10	+	7.00	+	10.83
Food, Beverages, Tobacco, Textil	31.1122	141.10	139.64	127.21	+	1.05	+	10.92
Food Products, Beverages &	20.0718	139.45	137.23	120.86	+	1.62	+	15.38
028 Meat of Animals	3.4559	153.94	153.94	131.57	+	0.00	+	17.00
029 Vegetables & Fruit Juice	0.0058	111.15	111.15	112.28	+	0.00	-	1.01
030 Dried Fruits & Nuts	0.1733	159.65	159.63	149.83	+	0.01	+	6.55
031 Fruit Juices	0.3880	125.76	125.44	115.65	+	0.26	+	8.74
032 Vegetable Oils Refined	1.9242	123.23	124.03	116.01	-	0.65	+	6.22
033 Vegetable Ghee	1.5632	144.11	143.90	127.53	+	0.15	+	13.00
034 Oil Cakes	0.9611	139.48	150.90	128.36	-	7.57	+	8.66
035 Processed Liquid Milk	4.4437	134.84	134.84	121.40	+	0.00	+	11.07
036 Milk & Cream in Solid Form	0.0316	128.95	128.79	121.13	+	0.12	+	6.46
037 Ice Cream	0.0047	137.64	126.15	107.34	+	9.11	+	28.23
038 Dairy Products N.E.C	0.0117	134.83	133.96	125.82	+	0.65	+	7.16
039 Wheat Flour	2.3034	147.02	136.02	107.74	+	8.09	+	36.46
040 Other Cereal Flour	0.0604	116.92	116.92	108.72	+	0.00	+	7.54
041 Sugar Refined	1.7975	153.43	137.18	120.01	+	11.85	+	27.85
042 Chocolate	0.0139	81.72	81.72	81.57	+	0.00	+	0.18
043 Sugar Confectionary	0.0738	171.45	161.56	123.81	+	6.12	+	38.48
044 Coffee & Tea	0.7303	129.05	129.26	121.17	-	0.16	+	6.50
045 Spices	0.1449	248.63	240.00	139.71	+	3.60	+	77.96
046 Other Food Products	0.0336	117.25	117.25	109.25	+	0.00	+	7.32
047 Mineral Water	0.0207	124.87	125.19	117.94	-	0.26	+	5.88
048 Beverages	0.6303	127.72	127.42	122.73	+	0.24	+	4.07
049 Tobacco Products	1.2998	104.23	104.23	104.23	+	0.00	+	0.00
Textiles & Apparels	10.3289	145.83	145.76	140.72	+	0.05	+	3.63
050 Cotton Yarn	5.2491	164.84	164.84	166.90	+	0.00	-	1.23
051 Nylon Yarn	0.1719	95.24	95.24	95.24	+	0.00	+	0.00
052 Blended Yarn	0.1689	120.22	120.22	122.49	+	0.00	-	1.85
053 Woven Fabrics	0.0128	137.73	135.54	123.42	+	1.62	+	11.59
054 Cotton Fabrics	0.6343	150.20	149.50	109.09	+	0.47	+	37.68
055 Other Fabrics	1.1016	113.59	113.59	112.30	+	0.00	+	1.15
056 Silk & Reyon Fabrics	0.7350	129.92	130.26	114.15	-	0.26	+	13.82
057 Towels	0.1235	125.47	123.48	109.39	+	1.61	+	14.70
058 Blankets	0.0029	104.35	102.50	95.81	+	1.80	+	8.91
059 Bed Sheets	0.0913	119.63	119.45	106.74	+	0.15	+	12.08

Annexure C: Wholesale Price Indices by Major Groups & Commodities

(2015-16=100)

Item and Specification	Weight	Index Numbers			% Change in Aug 2020 over	
		Aug 20	Jul 20	Aug 19	Jul 2020	Aug 2019
060 Quilts	0.0019	109.35	109.35	104.68	+ 0.00	+ 4.46
061 Woolen Carpets	0.0383	137.01	137.01	125.43	+ 0.00	+ 9.23
062 Synthetic Carpets	0.0566	115.72	115.72	105.96	+ 0.00	+ 9.21
063 Hosiery Products	0.8832	123.03	122.67	110.02	+ 0.29	+ 11.83
064 Readymade Garments	1.0576	131.74	131.74	123.15	+ 0.00	+ 6.98
Leather Products	0.7115	118.88	118.88	110.18	+ 0.00	+ 7.90
065 Leather Without Hair	0.2973	108.00	108.00	105.65	+ 0.00	+ 2.22
066 Other Leather N.E.C	0.2567	111.77	111.77	106.90	+ 0.00	+ 4.56
067 Footwears	0.1575	151.00	151.00	124.07	+ 0.00	+ 21.71
Other Transportable Goods	22.3979	143.01	138.95	166.83	+ 2.92	- 14.28
068 Timber	0.0165	151.80	140.66	111.75	+ 7.92	+ 35.84
069 Printing Paper	0.4279	130.70	130.70	126.46	+ 0.00	+ 3.35
070 Hard Board	0.1579	146.50	146.50	146.50	+ 0.00	+ 0.00
071 Motor Spirit	1.6268	146.32	140.68	166.88	+ 4.01	- 12.32
072 Diesel Oil	5.4849	134.12	123.59	189.26	+ 8.52	- 29.13
073 Kerosine Oil	0.2151	128.04	116.34	203.65	+ 10.06	- 37.13
074 Furnace Oil	3.2664	224.79	216.73	294.09	+ 3.72	- 23.56
075 Mobil Oil	0.7114	119.60	122.25	120.04	- 2.17	- 0.37
076 Chemicals	1.7720	132.94	132.94	128.10	+ 0.00	+ 3.78
077 Dyeing Material	0.1539	146.16	146.16	136.76	+ 0.00	+ 6.87
078 Fertilizers	2.8657	94.10	93.79	101.63	+ 0.33	- 7.41
079 Pesticides	0.2763	141.18	141.18	107.60	+ 0.00	+ 31.21
080 Insecticides	0.1276	111.49	111.49	112.34	+ 0.00	- 0.76
081 Paints & Varnishes	0.1916	135.82	133.27	124.13	+ 1.91	+ 9.42
082 Medicines	1.1428	144.83	145.00	129.13	- 0.12	+ 12.16
083 Soaps & Detergents	0.8168	109.71	113.51	109.02	- 3.35	+ 0.63
084 Auto Tyres	0.2703	124.74	124.45	121.30	+ 0.23	+ 2.84
085 Plastic Products	0.4550	117.75	116.63	108.11	+ 0.96	+ 8.92
086 Glass sheets	0.2089	138.47	150.14	142.86	- 7.77	- 3.07
087 Other Glass Articles	0.1635	149.89	144.31	131.03	+ 3.87	+ 14.39
088 Ceramics & Sanitary Fixture	0.0244	124.15	123.90	123.16	+ 0.20	+ 0.80
089 Bricks, Blocks & Tiles	0.1566	128.35	126.40	119.27	+ 1.54	+ 7.61
090 Cement	1.8145	118.98	119.23	111.08	- 0.21	+ 7.11
091 Bed Foam	0.0006	146.96	146.33	118.28	+ 0.43	+ 24.25
092 Matches	0.0505	1171.7	1171.	1144.	+ 0.00	+ 2.39
Metal Product, Machinery & Eq	8.7156	144.73	144.85	127.59	- 0.08	+ 13.43
093 Steel Bar & Sheets	1.4615	161.34	162.92	159.31	- 0.97	+ 1.27
094 Pipe Fittings	0.0780	144.78	144.78	135.47	+ 0.00	+ 6.87
095 Steel Products	0.3879	134.16	133.78	132.93	+ 0.28	+ 0.93
096 Engines & Motors	0.0046	107.29	107.29	107.29	+ 0.00	+ 0.00
097 Vacuum Pumps	0.0155	107.56	107.56	107.56	+ 0.00	+ 0.00
098 Air Conditioners	0.0049	115.95	115.95	112.46	+ 0.00	+ 3.10
099 Cultivators	0.0551	103.75	103.75	87.11	+ 0.00	+ 19.10
100 Chuff Cutter	0.1293	110.00	110.00	102.86	+ 0.00	+ 6.94
101 Tractors	0.0028	122.16	122.16	109.22	+ 0.00	+ 11.85
102 Lathe Machines	0.0525	203.64	203.64	168.06	+ 0.00	+ 21.17
103 Concrete Mixture	0.0107	100.00	100.00	100.00	+ 0.00	+ 0.00
104 Fridge,WashM,SewM,Fans,Iron	1.1645	153.70	153.20	137.58	+ 0.33	+ 11.72
105 Electric Wires	0.0912	137.76	137.76	122.14	+ 0.00	+ 12.79
106 Lighting Equipments	1.4431	116.71	116.71	110.13	+ 0.00	+ 5.97
107 Radio & Television	0.1843	104.51	104.51	97.48	+ 0.00	+ 7.21
108 Motor Vehicles	0.0244	156.45	156.45	150.63	+ 0.00	+ 3.86
109 Motorcycles	0.2570	124.50	122.49	118.24	+ 1.64	+ 5.29
110 Bicycles	3.3483	153.05	153.05	120.58	+ 0.00	+ 26.93