



Monthly Review on Price Indices



September, 2018
(Base 2007-08)

Government of Pakistan
Ministry of Statistics
Pakistan Bureau of Statistics
Islamabad

Inflation in Brief

1. CPI inflation General increased by 5.1% on year-on-year basis in September 2018 as compared to an increase of 5.8% in the previous month and 3.9% in September 2017. On month-on-month basis, it decreased by 0.1% in September 2018 as compared to an increase of 0.2% in the previous month and increase of 0.6% in September 2017.
2. Core inflation measured by non-food non-energy CPI (Core NFNE) increased by 8.0% on (YoY) basis in September 2018 as compared to an increase of 7.7% in the previous month and 5.4% in September 2017. On (MoM) basis, it increased by 0.4% in September 2018 as compared to increase of 0.2% in previous month, and an increase of 0.1% in corresponding month of last year i.e. September 2017.
3. Core inflation, measured by 20% weighted trimmed mean CPI (Core Trimmed) increased by 5.8% on (YoY) basis in September 2018 as compared to 5.9% in the previous month and by 4.1% in September 2017. On (MoM) basis, it increased by 0.1% in September 2018 as compared to an increase of 0.2% in the previous month and an increase of 0.1% in corresponding month of last year i.e. September 2017.
4. SPI inflation on YoY increased by 1.0% in September 2018 as compared to an increase of 3.3% a month earlier and an increase of 1.9% in September 2017. On MoM basis, it decreased by 0.1% in September 2018 as compared to an increase of 0.2% a month earlier and an increase of 2.1% in September 2017.
5. WPI inflation on YoY basis increased by 9.2% in September 2018 as compared to an increase of 11.0% a month earlier and an increase of 1.6% in September 2017. WPI inflation on MoM basis decreased by 1.5% in September 2018 as compared to an increase of 0.8% a month earlier and an increase of 0.1% in corresponding month of last year i.e. September 2017.
6. Figures 1 and 2 show graphically the data of Table 1. Table 1.1 shows "Period Average" and "YoY" percent changes in indices of three years.

Figures 1 and 2 show graphically the data of Table 1. Table 1.1 shows "Period Average" and "YoY" percent changes in indices of three years.

Table 1: Inflation (%) (Base 2007-08)														
Period	CPI						Core Inflation				SPI**		WPI	
	General		Food		Non-food		NFNE*		Trimmed		YoY	MoM	YoY	MoM
	YoY	MoM	YoY	MoM	YoY	MoM	YoY	MoM	YoY	MoM				
Aug-17	3.4	0.2	1.3	0.4	5.0	0.1	5.5	0.1	4.2	0.1	-0.1	0.5	1.0	0.3
Sep-17	3.9	0.6	2.4	1.3	4.9	0.2	5.4	0.1	4.1	0.1	1.9	2.1	1.6	0.1
Oct-17	3.8	0.7	2.2	0.6	4.9	0.8	5.3	0.9	4.0	0.6	2.1	0.9	2.3	0.6
Nov-17	4.0	0.4	2.4	0.4	5.1	0.4	5.5	0.3	4.2	0.3	2.1	0.3	2.9	0.4
Dec-17	4.6	-0.1	3.8	-0.6	5.1	0.2	5.5	0.2	4.7	0.2	2.2	-0.7	3.4	0.4
Jan-18	4.4	0.0	3.7	-1.0	4.9	0.8	5.2	0.8	4.6	0.6	2.0	-1.0	4.7	1.8
Feb-18	3.8	-0.3	2.2	-1.1	4.9	0.2	5.2	0.2	4.3	0.1	0.5	-1.2	4.1	-0.1
Mar-18	3.2	0.3	0.1	-0.3	5.4	0.7	5.8	0.7	4.1	0.2	-1.8	-0.6	3.6	0.2
Apr-18	3.7	1.8	-0.2	1.5	6.4	2.1	7.0	2.5	5.0	1.6	-0.5	0.4	4.0	1.3
May-18	4.2	0.5	1.0	1.0	6.4	0.2	7.0	0.2	5.1	0.3	0.5	0.1	5.6	1.3
Jun-18	5.2	0.6	3.0	0.8	6.7	0.4	7.1	0.3	5.4	0.2	1.9	1.8	7.6	1.5
Jul-18	5.8	0.9	3.5	0.6	7.4	1.2	7.6	1.2	5.9	0.9	3.6	1.2	10.5	2.4
Aug-18	5.8	0.2	3.3	0.2	7.6	0.2	7.7	0.2	5.9	0.2	3.3	0.2	11.0	0.8
Sep-18	5.1	-0.1	1.4	-0.7	7.7	0.3	8.0	0.4	5.8	0.1	1.0	-0.1	9.2	-1.5

*NFNE is non-food non-energy, ** SPI for quintile 1. Digits 0.0* are due to rounding off.

Table 1.1 : Period Average and YoY % Changes of Indices (Base 2007-08)						
Index	Average July - September % changes			September % September		
	2018-19	2017-18	2016-17	2018	2017	2016
CPI	5.60	3.39	3.86	5.12	3.86	3.88
SPI	2.62	0.48	1.89	1.05	1.92	1.81
WPI	10.25	1.10	3.29	9.25	1.62	3.38

Figure 2: CPI Inflation MoM, Special Indices

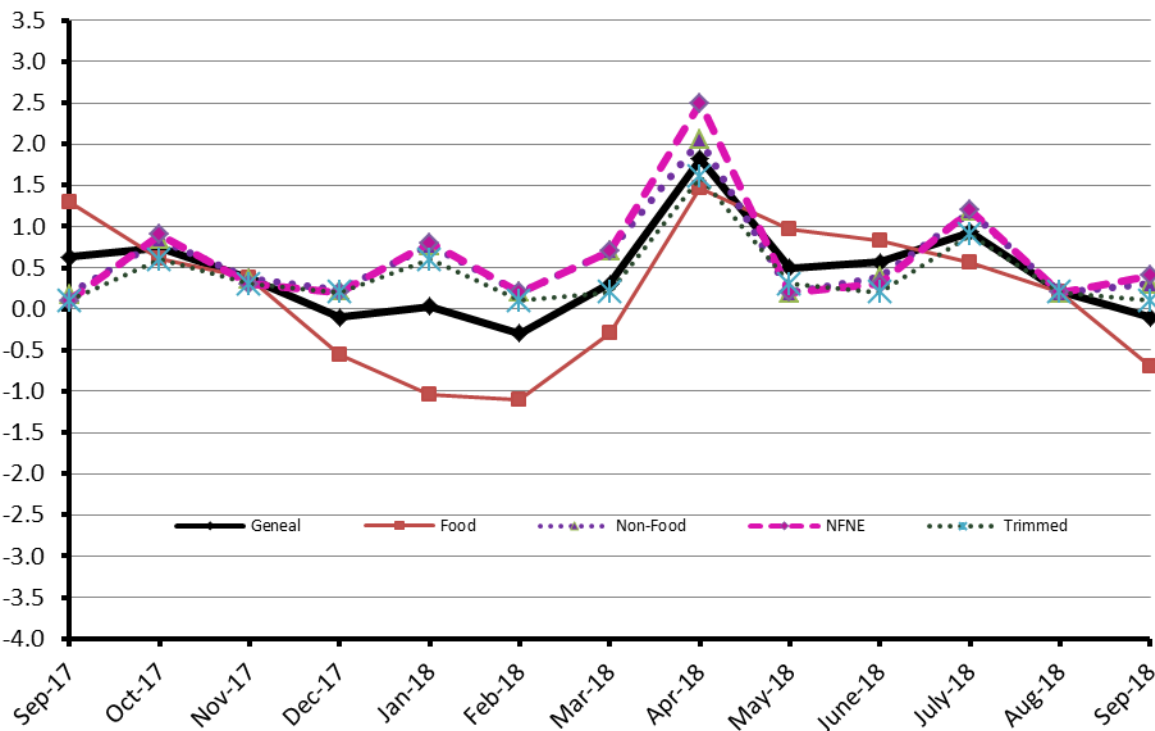
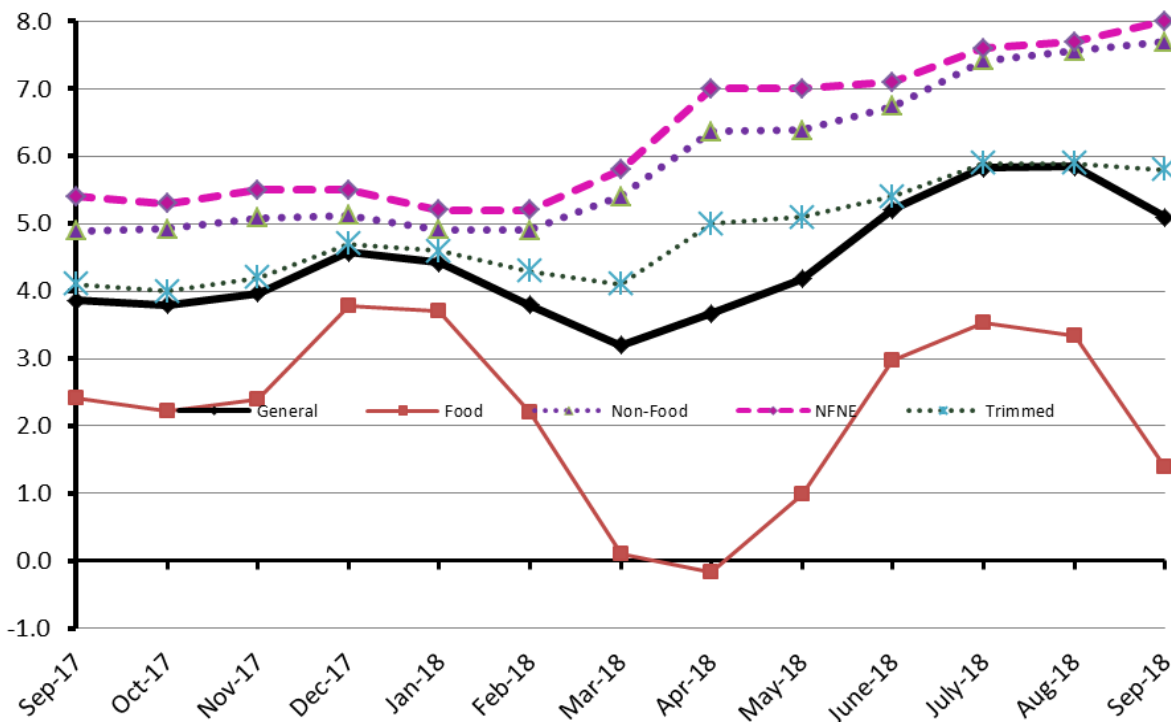


Figure 1: CPI Inflation YoY, Special Indices



Consumer Price Index (CPI)

The Consumer Price Index of September 2018, is decreased by 0.06% over August 2018 and increased by 5.12% over corresponding month of the last year i.e. September 2017.

Table 2 : Consumer Price Index by Group of Commodities and Services (Base 2007-08)

No	Group	Group Weight (%)	Indices			% Change September 2018 Over		Impact (In % points) September 2018 Over	
			Sep 2018	Aug 2018	Sep 2017	Aug 2018	Sep 2017	Aug 2018	Sep 2017
	General	100.00	229.14	229.27	217.98	-0.06	5.12	-0.06	5.12
1.	Food & Non-alcoholic Bev.	34.83	236.78	238.58	234.23	-0.75	1.09	-0.27	0.41
	<i>Non-perishable Food Items</i>	29.84	234.40	234.60	225.49	-0.09	3.95	-0.03	1.22
	<i>Perishable Food Items</i>	4.99	251.03	262.33	286.53	-4.31	-12.39	-0.25	-0.81
2.	Alcoholic Bev. & Tobacco	1.41	314.42	313.47	304.80	0.30	3.16	0.01	0.06
3.	Clothing & Footwear	7.57	255.36	254.67	239.52	0.27	6.61	0.02	0.55
4.	Housing, Water, Electricity, Gas & Fuels	29.41	210.82	210.80	198.95	0.01	5.97	0.00	1.60
5.	Furnishing & Household Equipment Maintenance	4.21	243.36	242.22	229.10	0.48	6.22	0.02	0.28
6.	Health	2.19	226.78	225.20	213.90	0.70	6.02	0.02	0.13
7.	Transport	7.20	205.19	204.74	175.74	0.22	16.76	0.01	0.97
8.	Communication	3.22	133.78	133.78	133.04	0.00	0.56	0.00	0.01
9.	Recreation & Culture	2.02	210.12	209.89	196.78	0.11	6.78	0.00	0.12
10.	Education	3.94	287.41	281.89	249.61	1.96	15.14	0.09	0.68
11.	Restaurants & Hotels	1.23	295.86	295.01	281.08	0.29	5.26	0.00	0.08
12.	Miscellaneous	2.76	267.30	264.45	250.11	1.08	6.87	0.03	0.22

Main contributors to month-on-month and year-on-year percentage changes are given below and detail is given in Annexure A.

1. Month-on-month Top few commodities which varied from previous month are given below: -

Food Items Increased: Pulse Gram (2.87%), Gur (2.74%), Spices (1.32%), Wheat (0.77%), Milk Powder (0.75%), Pulse Mash (0.69%), Rice (0.65%), Besan (0.55%), Sweet Meat (0.54%), Honey (0.46%), Milk Product (0.42%) and Cigarettes (0.41%).

Decreased: Tomatoes (12.03%), Onion (10.47%), Chicken (6.14%), Fresh Fruits (6.09%), Betel Leaves & Nuts (2.83%), Eggs (2.81%), Fish (2.54%), Potatoes (1.32%), Sugar (1.04%), Dry Fruits (0.74%), Gram Whole (0.67%) and Pulse Masoor (0.48%).

Non-food Items Increased: Personal Equipments (2.00%), Education (1.96%), Washing Soaps & Detergents (1.4%), Marriage Hall charges (1.34%), Doctor MBBS Clinic Fee (1.14%), Transport Services (1.08%), Motor Vehicle Accessories (0.89%), Medical Tests (0.78%), Blades (0.69%), Medical Equipments (0.67%), Cosmetics (0.61%) and Plastic Products (0.59%).

Non-food Items Decreased: Motor Fuel (0.77%) and Kerosene Oil (0.57%).

2. Year-on-Year: Top few commodities which varied from previous year i.e. September 2017 are given below:-

Food Items Increased: Meat (10.82%), Spices (10.66%), Dry Fruits (10.27%), Rice (8.84%), Tea (8.24%), Sweet Meat (7.69%), Honey (6.18%), Jam Tomato ketchup & Pickles (5.94%), Condiments (5.55%), Milk Powder (5.43%), Readymade Food (5.26%), Bakery & Confectionary (4.78%), Milk Product (4.21%), Milk Fresh (4.02%) and Wheat flour (3.78%).

Decreased: Onion (53.05%), Pulse Mash (22.86%), Potatoes (19.58%), Tomatoes (9.83%), Gram Whole (9.14%), Pulse Masoor (8.50%), Pulse Moong (8.19%), Eggs (5.4%), Chicken (4.77%), Fesh Vegetables (3.71%) and Pulse Gram (3.69%).

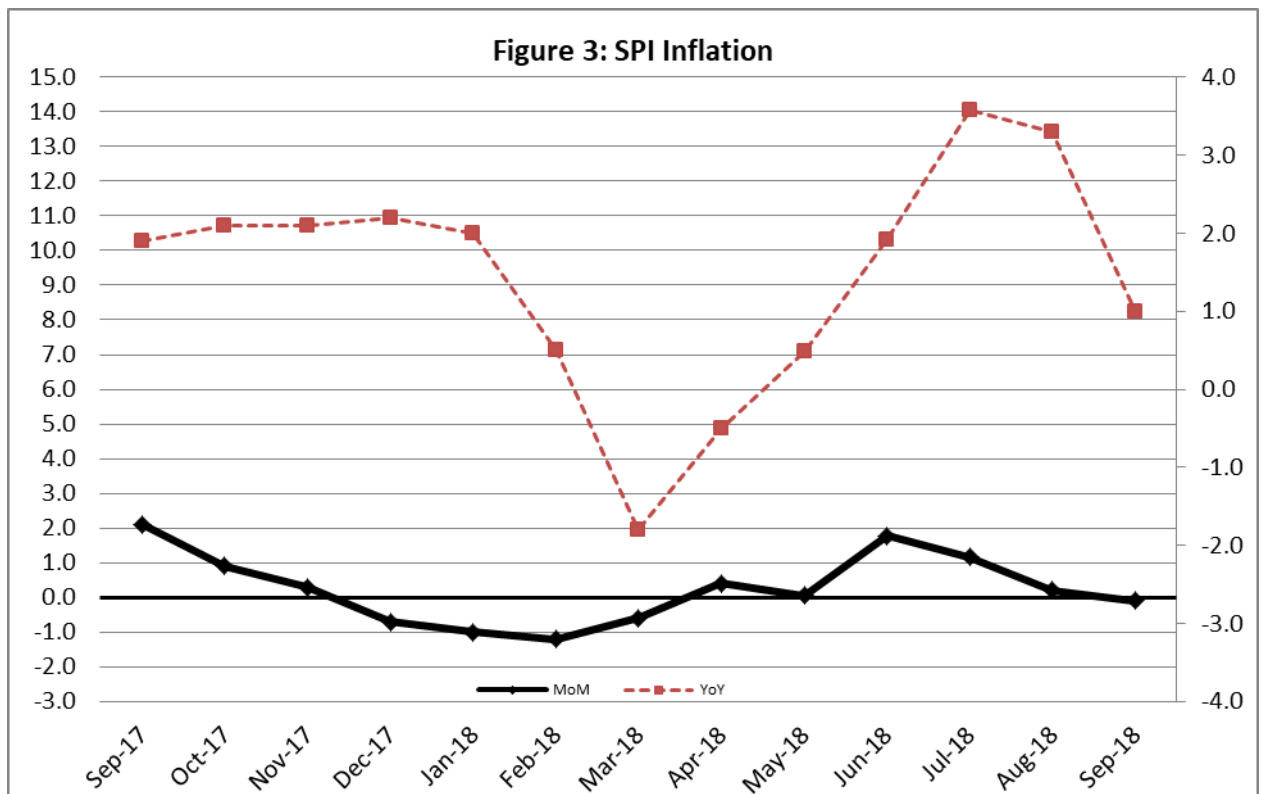
Non-food Items Increased: Kerosene Oil (37.53%), Motor Fuel (24.81%), Transport Services (15.39%), Education (15.14%), Motor Vehicles (11.44%), Water Supply (10.63%), Newspapers (10.44%), Construction Input Items (9.75%), Utensils (9.7%), Cosmetics (9.61%), Medical Tests (9.33%), Construction Wage Rates (9.14%), Doctor (MBBS) Clinic Fee (9.1%).

II. Sensitive Price Indicator

Quintile-wise percentage changes YoY and MoM are given below in Table 3. The series from September 2017 to September 2018 is also graphed below in Figure 3.

Table 3: Sensitive Price Indicator (Base 2007-08)					
Quintiles	Indices			% Change September, 2018 over	
	September,2018	August, 2018	September,2017	August, 2018	September,2017
1	216.60	216.72	214.35	-0.06	1.05
2	224.85	225.06	221.82	-0.09	1.37
3	226.50	226.81	222.98	-0.14	1.58
4	231.38	231.80	226.93	-0.18	1.96
5	230.19	230.84	223.41	-0.28	3.03
Combined	228.27	228.72	223.38	-0.20	2.19

Table 3.1 : Weekly Percentage Change of SPI During June, 2018				
Quintiles	% Change with Previous week			
	6 th Sep-2018	13 th Sep-2018	18 th Sep-2018	27 th Sep-2018
Quintile 1	0.30	0.23	0.10	0.35
Combined	0.18	0.20	0.14	0.37



IV. Wholesale Price Index

The Wholesale Price Index for September, 2018 decreased by 1.52% over August, 2018. It increased by 9.25% over the corresponding month of the last year. YoY and MoM movements, from September, 2017 to September, 2018 are also graphed below in Figure 4.

Table 4 : Wholesale Price Index by Group of Commodities (Base 2007-08)

No.	Group	Group Weight (%)	Indices			% Change Sep, 2018 over		Impact (in %age points) Sep, 2018 over	
			Sep. 2018	Aug. 2018	Sep, 2017	Aug. 2018	Sep, 2017	Aug. 2018	Sep, 2017
	General	100.00	238.25	241.93	218.08	-1.52	9.25	-1.52	9.25
1.	Agriculture, Forestry & Fishery Products	25.77	267.67	274.04	252.05	-2.32	6.20	-0.68	1.85
2.	Ores & Minerals, Electricity, Gas & Water	12.04	244.76	244.14	242.68	0.25	0.86	0.03	0.11
3.	Food Products, Beverages & Tobacco, Textiles, Apparel & Leather Products	31.11	243.64	247.95	225.30	-1.74	8.14	-0.55	2.62
	i. Food Products, Bev. & Tobacco	20.07	248.81	248.83	235.42	-0.01	5.69	0.00	1.23
	ii. Textiles and Apparel	10.33	236.54	249.49	207.40	-5.19	14.05	-0.55	1.38
	iii. Leather Products	0.71	200.77	200.77	199.75	0.00	0.51	0.00	0.00
4.	Other Transportable Goods except Metal Products, Machinery & Equipment	22.37	213.10	216.87	171.64	-1.74	24.16	-0.35	4.25
5.	Metal Products, Machinery & Equipment	8.72	187.64	186.72	177.12	0.49	5.94	0.03	0.42

Main contributors to month-on-month and year-on-year percentage changes are given below and detail is given in Annexure B.

1. **Month-on-month** Top few commodities which varied from previous month i.e. August, 2018 are given below:-

Increased: Spices (5.33%), Bajra (4.72%), Chemicals (3.13%), Auto Tyres (3.10%), Maize (2.96%), Beverages (2.27%), Other Food Products (2.12%), Bicycles (1.62%), Plastic Products (1.40%), Hosiery Products (1.33%), Dry Fruits (1.20%) and Blankets (1.01%).

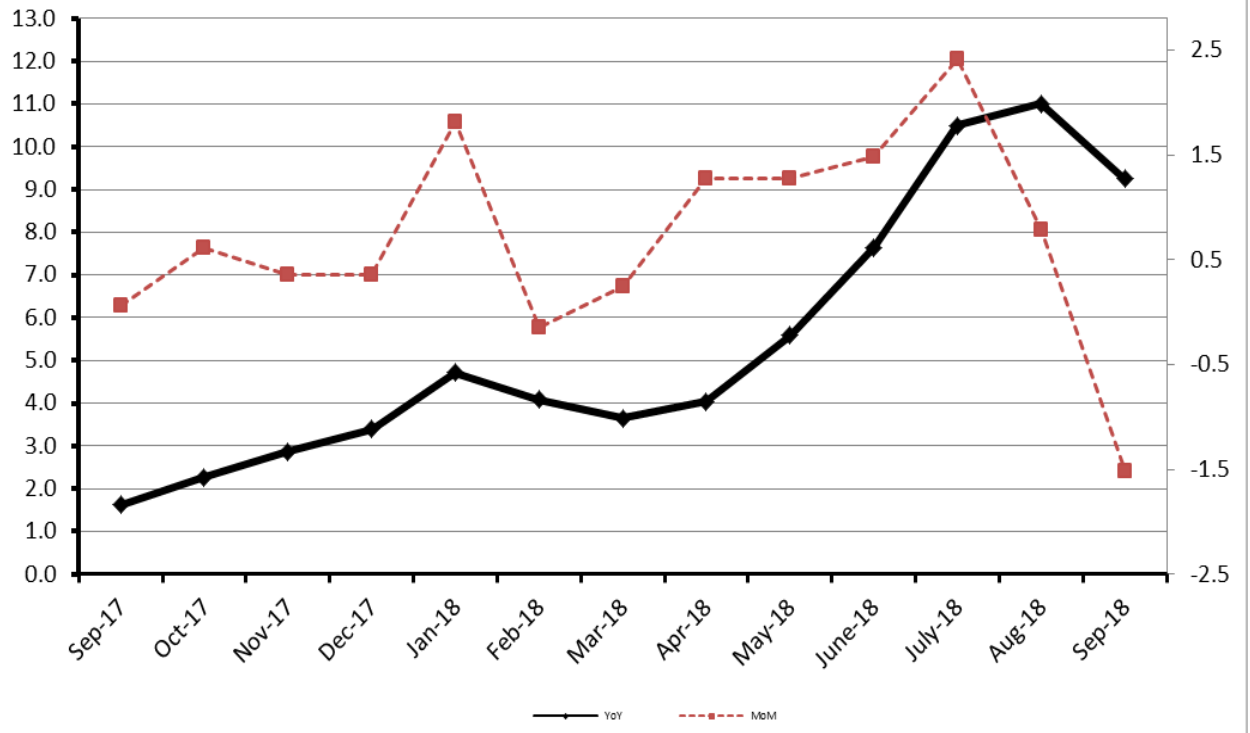
Decreased: Fresh Fruits (10.80%), Poultry (9.56%), Cotton Yarn (9.32%), Fibre Crops (6.51%), Diesel (5.64%), Petrol (4.67%), Potatoes (4.00%), Hides & Fur Skins Raw (3.86%), Eggs (2.81%) and Kerosene Oil (2.72%).

2. **Year-on-year** Top few commodities which varied from previous year i.e. September, 2017 are given below:-

Increased: Kerosene Oil (90.22%), Furnace Oil (65.58%), Bajra (63.47%), Diesel (52.93%), Jowar (34.91%), Fibre Crops (31.57%), Petrol (29.85%), Hard Board (29.63%), Cotton Yarn (25.95%), Steel Bar & Sheets (21.36%), Maize (19.53%), Paints & Varnishes (18.70%), Dry Fruits (18.57%), Chemicals (18.35%), Footwears (15.52%), Dried Fruits & Nuts (12.66%), Fertilizers (12.05%), Motor Vehicles (11.65%) Meat (11.60%) and Towels (10.64%).

Decreased: Poultry (36.37%)Potatoes (26.64%), Vegetables (15.35%) and Pulses (12.22%).

Figure 4: WPI Inflation



Annexure A: Consumer Price Index Numbers by Commodity Groups & Commodities (2007-08=100)

Item and Specification	Weight	Index Numbers			% Change in Sep 2018 over			
		Sep 18	Aug 18	Sep 17	Aug 2018	Sep 2017		
General	100.0000	229.14	229.27	217.98	-	0.06	+	5.12
Food and non-alcoholic Beverages	34.8343	236.78	238.58	234.23	-	0.75	+	1.09
01 Wheat	0.3477	200.51	198.97	194.80	+	0.77	+	2.93
02 Wheat Flour	4.1648	212.55	212.13	204.81	+	0.20	+	3.78
03 Wheat Product	0.0959	213.99	213.31	213.67	+	0.32	+	0.15
04 Besan	0.1500	266.82	265.36	276.11	+	0.55	-	3.36
05 Rice	1.5821	199.02	197.74	182.86	+	0.65	+	8.84
06 Cereals	0.1563	264.45	264.58	255.64	-	0.05	+	3.45
07 Bakery & Confectionary	1.1550	229.45	228.93	218.99	+	0.23	+	4.78
08 Nimco	0.4574	261.61	260.84	255.84	+	0.30	+	2.26
09 Meat	2.4303	314.34	313.81	283.65	+	0.17	+	10.82
10 Chicken	1.3596	143.44	152.83	150.63	-	6.14	-	4.77
11 Fish	0.2970	223.09	228.91	215.33	-	2.54	+	3.60
12 Milk Fresh	6.6800	287.14	287.03	276.04	+	0.04	+	4.02
13 Milk Products	0.6338	278.55	277.39	267.30	+	0.42	+	4.21
14 Milk Powder	0.1129	247.39	245.56	234.64	+	0.75	+	5.43
15 Eggs	0.4555	194.28	199.90	205.37	-	2.81	-	5.40
16 Mustard Oil	0.0952	164.80	164.27	160.21	+	0.32	+	2.86
17 Cooking Oil	1.7538	141.62	141.32	138.10	+	0.21	+	2.55
18 Vegetable Ghee	2.0714	147.60	147.39	143.03	+	0.14	+	3.20
19 Dry Fruits	0.2543	291.02	293.19	263.91	-	0.74	+	10.27
20 Fresh Fruits	1.8649	243.78	259.58	238.11	-	6.09	+	2.38
21 Pulse Masoor	0.2712	156.97	157.72	171.56	-	0.48	-	8.50
22 Pulse Moong	0.2336	217.37	217.75	236.76	-	0.17	-	8.19
23 Pulse Mash (Washed)	0.2098	207.73	206.30	269.29	+	0.69	-	22.86
24 Pulse Gram	0.2361	265.30	257.89	275.47	+	2.87	-	3.69
25 Gram Whole	0.1616	265.65	267.44	292.37	-	0.67	-	9.14
26 Beans	0.0269	245.51	245.51	242.94	+	0.00	+	1.06
27 Potatoes	0.4598	215.21	218.08	267.60	-	1.32	-	19.58
28 Onion	0.5239	226.63	253.14	482.74	-	10.47	-	<u>53.05</u>
29 Tomatoes	0.4318	231.71	263.39	256.96	-	12.03	-	9.83
30 Fresh Vegetables	1.7105	280.93	280.39	291.76	+	0.19	-	3.71
31 Sugar	1.0445	197.47	199.54	200.00	-	1.04	-	1.27
32 Gur	0.0220	259.35	252.43	261.22	+	2.74	-	0.72
33 Honey	0.0446	352.68	351.07	332.15	+	0.46	+	6.18
34 SweetMeat	0.2483	273.01	271.54	253.51	+	0.54	+	7.69
35 Beverages	1.1990	233.14	233.42	226.34	-	0.12	+	3.00
36 Jam, Tomato Ketchup & Pickles	0.2454	233.20	232.81	220.13	+	0.17	+	5.94
37 Condiments	0.2656	286.64	286.39	271.56	+	0.09	+	5.55
38 Spices	0.5441	264.25	260.82	238.80	+	1.32	+	10.66
39 Tea	0.8377	307.50	306.97	284.10	+	0.17	+	8.24
Alcoholic Beverages, Tobacco	1.4135	314.42	313.47	304.80	+	0.30	+	3.16
40 Cigarettes	1.3906	309.50	308.24	305.67	+	0.41	+	1.25
41 Betel Leaves & Nuts	0.0229	613.03	630.86	251.93	-	2.83	+	143.3
Clothing and footwear	7.5708	255.36	254.67	239.52	+	0.27	+	6.61
42 Cotton Cloth	1.7286	248.90	247.77	232.67	+	0.46	+	6.98
43 Woolen Cloth	0.8759	268.05	267.11	257.77	+	0.35	+	3.99
44 Readymade Garments	0.9739	264.55	264.49	247.97	+	0.02	+	6.69
45 Woolen Readymade Garments	0.3964	267.54	266.61	259.27	+	0.35	+	3.19
46 Hosiery	0.5094	267.72	266.49	251.70	+	0.46	+	6.36
47 Dopatta	0.4412	266.54	265.73	246.66	+	0.30	+	8.06
48 Cleaning and Laundry	0.2110	292.02	291.30	272.37	+	0.25	+	7.21
49 Tailoring	0.8840	350.43	349.60	324.65	+	0.24	+	7.94
50 Footwear	1.5504	180.09	179.97	167.46	+	0.07	+	7.54
Housing, water, Elec., Gas and	29.4149	210.82	210.80	198.95	+	0.01	+	5.97
51 House Rent	21.8149	206.00	206.00	191.49	+	0.00	+	7.58
52 Construction Input Items	0.5623	280.39	280.01	255.47	+	0.14	+	9.75
53 Construction Wage Rates	0.3331	268.44	267.25	245.96	+	0.45	+	9.14
54 Water Supply	0.4971	189.82	189.82	171.58	+	0.00	+	10.63
55 Electricity	4.3985	238.10	238.10	238.10	+	0.00	+	0.00
56 Gas	1.5756	158.08	158.08	158.08	+	0.00	+	0.00
57 Kerosene Oil	0.0057	272.49	274.04	198.39	-	0.57	+	37.35

Annexure A: Consumer Price Index Numbers by Commodity Groups & Commodities (2007-08=100)

	Item and Specification	Weight	Index Numbers			% Change in Sep 2018 over	
			Sep 18	Aug 18	Sep 17	Aug 2018	Sep 2017
58	Firewood Whole	0.2277	299.07	298.70	291.34	+ 0.12	+ 2.65
	Furnishing and household equi	4.2082	243.36	242.20	229.10	+ 0.48	+ 6.22
59	Furniture	0.3315	238.44	237.77	220.81	+ 0.28	+ 7.98
60	Household Textiles	0.6489	243.85	243.45	231.08	+ 0.16	+ 5.53
61	Household Equipment	0.5936	193.22	192.31	183.36	+ 0.47	+ 5.38
62	Utensils	0.3212	257.08	255.56	234.34	+ 0.59	+ 9.70
63	Plastic Products	0.2547	229.26	227.91	213.05	+ 0.59	+ 7.61
64	Washing Soaps & Detergents	0.7893	245.92	242.53	232.92	+ 1.40	+ 5.58
65	Sewing Needle & Dr Cell	0.1496	221.76	221.16	209.49	+ 0.27	+ 5.86
66	Household Servant	1.0432	271.59	271.59	257.30	+ 0.00	+ 5.55
67	Marriage Hall Charges	0.0762	270.18	266.62	249.20	+ 1.34	+ 8.42
	Health	2.1868	226.78	225.20	213.90	+ 0.70	+ 6.02
68	Drugs & Medicines	1.2667	191.25	190.58	185.75	+ 0.35	+ 2.96
69	Medical Equipments	0.0080	263.71	261.95	253.35	+ 0.67	+ 4.09
70	Doctor (MBBS) Clinic Fee	0.5904	307.89	304.41	282.22	+ 1.14	+ 9.10
71	Medical Tests	0.3217	216.89	215.21	198.38	+ 0.78	+ 9.33
	Transport	7.2023	205.19	204.74	175.74	+ 0.22	+ 16.76
72	Motor Vehicles	0.6630	197.12	196.91	176.88	+ 0.11	+ 11.44
73	Motor Vehicle Accessories	0.2439	220.60	218.65	213.57	+ 0.89	+ 3.29
74	Motor Fuel	3.0269	183.18	184.60	146.77	- 0.77	+ 24.81
75	Mechanical Service	0.4552	245.90	244.82	232.07	+ 0.44	+ 5.96
76	Motor Vehicle Tax	0.1099	210.18	210.18	210.18	+ 0.00	+ 0.00
77	Transport Services	2.7034	223.38	221.00	193.59	+ 1.08	+ 15.39
	Communication	3.2198	133.78	133.78	133.04	+ 0.00	+ 0.56
78	Postal Services	0.0662	272.45	272.45	250.69	+ 0.00	+ 8.68
79	Communication & Apparatus	3.1536	130.87	130.86	130.57	+ 0.01	+ 0.23
	Recreation and culture	2.0227	210.12	209.89	196.78	+ 0.11	+ 6.78
80	Recreation & Culture	0.8634	137.22	137.22	129.49	+ 0.00	+ 5.97
81	Text Books	0.5706	304.43	304.43	287.98	+ 0.00	+ 5.71
82	Newspapers	0.1934	202.94	202.94	183.76	+ 0.00	+ 10.44
83	Stationery	0.3953	236.70	235.55	218.46	+ 0.49	+ 8.35
	Education	3.9431	287.41	281.89	249.61	+ 1.96	+ 15.14
84	Education	3.9431	287.41	281.89	249.61	+ 1.96	+ 15.14
	Restaurants and hotels	1.2286	295.86	295.01	281.08	+ 0.29	+ 5.26
85	Readymade Food	1.2286	295.86	295.01	281.08	+ 0.29	+ 5.26
	Misc. goods and services	2.7550	267.30	264.45	250.11	+ 1.08	+ 6.87
86	Personal Care	1.4935	242.09	240.91	230.31	+ 0.49	+ 5.11
87	Cosmetics	0.3853	225.61	224.25	205.83	+ 0.61	+ 9.61
88	Blades	0.0322	206.54	205.13	197.94	+ 0.69	+ 4.34
89	Personal Equipments	0.8440	333.26	326.73	307.36	+ 2.00	+ 8.43

Annexure B: Wholesale Price Indices by Major Groups & Commodities

(2007-08=100)

Item and Specification	Weight	Index Numbers			% Change in Sep 2018 over			
		Sep 18	Aug 18	Sep 17	Aug 2018	Sep 2017		
General	100.0000	238.25	241.93	218.08	-	1.52	+	9.25
Agriculture Forestry & Fisher	25.7674	267.67	274.04	252.05	-	2.32	+	6.20
001 Wheat	0.6297	205.17	204.53	196.01	+	0.31	+	4.67
002 Maize	0.6764	228.81	222.24	191.42	+	2.96	+	19.53
003 Rice	2.4413	181.31	181.28	168.67	+	0.02	+	7.49
004 Sorghum / Jowar	0.0214	285.95	293.20	211.96	-	2.47	+	34.91
005 Millet / Bajra	0.0374	261.64	249.84	160.05	+	4.72	+	<u>63.47</u>
006 Vegetables	1.2441	338.79	346.19	400.21	-	2.14	-	15.35
007 Fresh Fruits	1.5144	266.54	298.81	253.92	-	10.80	+	4.97
008 Dry Fruits	0.2478	278.85	275.54	235.18	+	1.20	+	18.57
009 Cotton Seeds	1.1511	265.99	268.41	260.12	-	0.90	+	2.26
010 Other Oil Seeds	0.0722	195.43	196.32	185.96	-	0.45	+	5.09
011 Edible Roots / Potatoes	0.2540	199.17	207.46	271.48	-	4.00	-	26.64
012 Stimulant & Spice Crops	0.1634	319.25	322.59	294.09	-	1.04	+	8.56
013 Pulses	0.4901	231.62	232.09	263.85	-	0.20	-	12.22
014 Sugar Crops	1.0725	257.62	257.62	268.94	+	0.00	-	4.21
015 Fibre Crops	5.3169	262.70	281.00	199.67	-	6.51	+	31.57
016 Unmanufactured Tobacco	0.0742	318.02	316.51	293.30	+	0.48	+	8.43
017 Poultry	0.5633	143.93	159.15	226.19	-	9.56	-	36.37
018 Raw Milk from Bovine Animals	7.0279	285.13	285.13	269.94	+	0.00	+	5.63
019 Eggs	0.5034	201.16	206.97	204.41	-	2.81	-	1.59
020 Raw Animal Materials / Wool	0.0351	176.92	176.92	172.91	+	0.00	+	2.32
021 Hides & Fur Skins, Raw	0.4834	93.47	97.22	98.57	-	3.86	-	5.17
022 Fuel Wood in Logs	0.0179	284.65	283.56	279.63	+	0.38	+	1.80
023 Fish Live Fresh or Chilled	1.7295	453.67	451.22	440.36	+	0.54	+	3.02
Ores/Minerals, Elec., Gas & W	12.0389	244.76	244.14	242.68	+	0.25	+	0.86
024 Coal not Agglomerated	0.7508	155.29	155.29	155.29	+	0.00	+	0.00
025 Natural Gas Liquefied	5.7385	214.80	213.53	210.69	+	0.59	+	1.95
026 Salt & Pure Sodium Chloride	0.0584	271.87	269.74	248.46	+	0.79	+	9.42
027 Electrical Energy	5.4912	288.00	288.00	288.00	+	0.00	+	0.00
Food, Beverages, Tobacco, Textil	31.1122	243.64	247.95	225.30	-	1.74	+	8.14
Food Products, Beverages &	20.0718	248.81	248.83	235.42	-	0.01	+	5.69
028 Meat of Animals	3.4559	339.60	339.60	304.31	+	0.00	+	11.60
029 Vegetables & Fruit Juice	0.0058	228.62	228.62	224.22	+	0.00	+	1.96
030 Dried Fruits & Nuts	0.1733	302.02	299.69	268.09	+	0.78	+	12.66
031 Fruit Juices	0.3880	188.55	188.66	182.36	-	0.06	+	3.39
032 Vegetable Oils Refined	1.9242	159.08	158.54	154.86	+	0.34	+	2.73
033 Vegetable Ghee	1.5632	130.88	130.77	125.89	+	0.08	+	3.96
034 Oil Cakes	0.9611	240.72	244.38	218.98	-	1.50	+	9.93
035 Processed Liquid Milk	4.4437	296.67	296.67	282.01	+	0.00	+	5.20
036 Milk & Cream in Solid Form	0.0316	225.53	225.34	224.00	+	0.08	+	0.68
037 Ice Cream	0.0047	286.26	286.26	266.02	+	0.00	+	7.61
038 Dairy Products N.E.C	0.0117	282.17	279.65	268.85	+	0.90	+	4.95
039 Wheat Flour	2.3034	194.82	193.24	187.13	+	0.82	+	4.11
040 Other Cereal Flour	0.0604	218.82	217.45	227.95	+	0.63	-	4.01
041 Sugar Refined	1.7975	207.69	210.94	209.70	-	1.54	-	0.96
042 Chocolate	0.0139	100.00	100.00	100.00	+	0.00	+	0.00
043 Sugar Confectionary	0.0738	127.25	127.25	128.44	+	0.00	-	0.93
044 Coffee & Tea	0.7303	278.46	279.34	255.28	-	0.32	+	9.08
045 Spices	0.1449	213.13	202.35	201.92	+	5.33	+	5.55
046 Other Food Products	0.0336	300.74	294.50	294.50	+	2.12	+	2.12
047 Mineral Water	0.0207	210.16	211.50	206.35	-	0.63	+	1.85
048 Beverages	0.6303	176.55	172.63	172.85	+	2.27	+	2.14
049 Tobacco Products	1.2998	319.65	319.65	318.37	+	0.00	+	0.40
Textiles & Apparels	10.3289	236.54	249.49	207.40	-	5.19	+	14.05
050 Cotton Yarn	5.2491	253.93	280.03	201.61	-	9.32	+	25.95
051 Nylon Yarn	0.1719	143.99	143.99	143.99	+	0.00	+	0.00
052 Blended Yarn	0.1689	201.84	200.05	183.55	+	0.89	+	9.96
053 Woven Fabrics	0.0128	321.49	321.49	316.28	+	0.00	+	1.65
054 Cotton Fabrics	0.6343	219.87	219.87	211.47	+	0.00	+	3.97
055 Other Fabrics	1.1016	227.85	227.85	227.16	+	0.00	+	0.30
056 Silk & Reyon Fabrics	0.7350	188.81	188.81	188.14	+	0.00	+	0.36
057 Towels	0.1235	305.52	305.52	276.14	+	0.00	+	10.64
058 Blankets	0.0029	267.72	265.03	247.52	+	1.01	+	8.16
059 Bed Sheets	0.0913	256.87	256.87	256.87	+	0.00	+	0.00

Annexure B: Wholesale Price Indices by Major Groups & Commodities

(2007-08=100)

Item and Specification	Weight	Index Numbers			% Change in Sep 2018 over	
		Sep 18	Aug 18	Sep 17	Aug 2018	Sep 2017
060 Quilts	0.0019	222.32	222.32	213.05	+ 0.00	+ 4.35
061 Woolen Carpets	0.0383	196.43	196.43	196.43	+ 0.00	+ 0.00
062 Synthetic Carpets	0.0566	131.80	131.80	130.95	+ 0.00	+ 0.65
063 Hosiery Products	0.8832	253.68	250.36	243.31	+ 1.33	+ 4.26
064 Readymade Garments	1.0576	204.85	204.85	201.37	+ 0.00	+ 1.73
Leather Products	0.7115	200.77	200.77	199.75	+ 0.00	+ 0.51
065 Leather Without Hair	0.2973	212.68	212.68	221.97	+ 0.00	- 4.19
066 Other Leather N.E.C	0.2567	207.02	207.02	207.31	+ 0.00	- 0.14
067 Footwears	0.1575	168.09	168.09	145.51	+ 0.00	+ 15.52
Other Transportable Goods	22.3659	213.10	216.87	171.64	- 1.74	+ 24.16
068 Timber	0.0165	240.62	239.89	231.53	+ 0.30	+ 3.93
069 Printing Paper	0.4279	172.70	172.70	166.60	+ 0.00	+ 3.66
070 Hard Board	0.1579	291.67	291.67	225.00	+ 0.00	+ 29.63
071 Coke	0.2797	163.45	163.45	163.45	+ 0.00	+ 0.00
072 Motor Spirit	1.5336	156.81	164.49	120.76	- 4.67	+ 29.85
073 Diesel Oil	5.2664	230.43	244.20	150.68	- 5.64	+ <u>52.93</u>
074 Kerosine Oil	0.2151	222.78	229.00	117.12	- 2.72	+ <u>90.22</u>
075 Furnace Oil	3.2664	172.10	175.33	103.94	- 1.84	+ <u>65.58</u>
076 Mobil Oil	0.7114	209.31	209.31	201.29	+ 0.00	+ 3.98
077 Chemicals	1.7720	213.09	206.63	180.05	+ 3.13	+ 18.35
078 Dyeing Material	0.1539	150.72	150.72	146.55	+ 0.00	+ 2.85
079 Fertilizers	2.8657	242.31	241.32	216.26	+ 0.41	+ 12.05
080 Pesticides	0.2763	312.32	312.32	306.92	+ 0.00	+ 1.76
081 Insecticides	0.1276	145.02	145.90	141.98	- 0.60	+ 2.14
082 Paints & Varnishes	0.1916	354.53	354.53	298.67	+ 0.00	+ 18.70
083 Medicines	1.1428	180.06	178.61	176.72	+ 0.81	+ 1.89
084 Soaps & Detergents	0.8168	193.52	193.00	191.45	+ 0.27	+ 1.08
085 Auto Tyres	0.2703	184.52	178.97	177.07	+ 3.10	+ 4.21
086 Plastic Products	0.4550	243.75	240.38	225.88	+ 1.40	+ 7.91
087 Glass sheets	0.2089	304.55	304.55	298.97	+ 0.00	+ 1.87
088 Other Glass Articles	0.1635	318.10	318.10	317.24	+ 0.00	+ 0.27
089 Ceramics & Sanitary Fixture	0.0244	243.24	243.24	232.65	+ 0.00	+ 4.55
090 Bricks, Blocks & Tiles	0.1566	225.43	223.76	221.69	+ 0.75	+ 1.69
091 Cement	1.8145	234.41	238.70	221.52	- 1.80	+ 5.82
092 Bed Foam	0.0006	176.50	176.50	170.33	+ 0.00	+ 3.62
093 Matches	0.0505	171.36	171.36	171.36	+ 0.00	+ 0.00
Metal Product, Machinery & Eq	8.7156	187.64	186.72	177.12	+ 0.49	+ 5.94
094 Pig Iron	0.0593	128.97	128.97	128.97	+ 0.00	+ 0.00
095 Steel Bar & Sheets	1.4022	168.49	170.86	138.84	- 1.39	+ 21.36
096 Pipe Fittings	0.0780	234.48	234.48	215.66	+ 0.00	+ 8.73
097 Steel Products	0.3879	183.35	182.68	177.56	+ 0.37	+ 3.26
098 Engines & Motors	0.0046	116.98	116.98	116.98	+ 0.00	+ 0.00
099 Vacuum Pumps	0.0155	123.69	123.69	123.69	+ 0.00	+ 0.00
100 Air Conditioners	0.0049	203.80	203.80	200.10	+ 0.00	+ 1.85
101 Cultivators	0.0551	190.66	190.66	190.66	+ 0.00	+ 0.00
102 Chuff Cutter	0.1293	153.46	153.46	153.46	+ 0.00	+ 0.00
103 Tractors	0.0028	216.82	216.82	201.75	+ 0.00	+ 7.47
104 Lathe Machines	0.0525	241.06	241.06	241.06	+ 0.00	+ 0.00
105 Concrete Mixture	0.0107	138.83	138.83	138.83	+ 0.00	+ 0.00
106 Fridge,WashM,SewM,Fans,Iron	1.1645	229.31	228.73	214.97	+ 0.25	+ 6.67
107 Electric Wires	0.0912	208.22	208.22	205.92	+ 0.00	+ 1.12
108 Lighting Equipments	1.4431	174.04	174.04	170.98	+ 0.00	+ 1.79
109 Radio & Television	0.1843	140.42	140.42	140.42	+ 0.00	+ 0.00
110 Motor Vehicles	0.0244	218.11	218.11	195.36	+ 0.00	+ 11.65
111 Motorcycles	0.2570	134.21	134.21	125.89	+ 0.00	+ 6.61
112 Bicycles	3.3483	194.31	191.22	187.65	+ 1.62	+ 3.55