



Monthly Review on Price Indices



August, 2018
(Base 2007-08)

Government of Pakistan
Ministry of Statistics
Pakistan Bureau of Statistics
Islamabad

Inflation in Brief

1. CPI inflation General increased by 5.8% on year-on-year basis in August 2018 as compared to an increase of 5.8% in the previous month and 3.4% in August 2017. On month-on-month basis, it increased by 0.2% in August 2018 as compared to an increase of 0.9% in the previous month and increase of 0.2% in August 2017.
2. Core inflation measured by non-food non-energy CPI (Core NFNE) increased by 7.7% on (YoY) basis in August 2018 as compared to an increase of 7.6% in the previous month and 5.5% in August 2017. On (MoM) basis, it increased by 0.2% in August 2018 as compared to increase of 1.2% in previous month, and an increase of 0.1% in corresponding month of last year i.e. August 2017.
3. Core inflation, measured by 20% weighted trimmed mean CPI (Core Trimmed) increased by 5.9% on (YoY) basis in August 2018 as compared to 5.9% in the previous month and by 4.2% in August 2017. On (MoM) basis, it increased by 0.2% in August 2018 as compared to an increase of 0.9% in the previous month and an increase of 0.1% in corresponding month of last year i.e. August 2017.
4. SPI inflation on YoY increased by 3.3% in August 2018 as compared to an increase of 3.6% a month earlier and a decrease of 0.1% in August 2017. On MoM basis, it increased by 0.2% in August 2018 as compared to an increase of 1.2% a month earlier and an increase of 0.5% in August 2017.
5. WPI inflation on YoY basis increased by 11.0% in August 2018 as compared to an increase of 10.5% a month earlier and an increase of 1.0% in August 2017. WPI inflation on MoM basis increased by 0.8% in August 2018 as compared to an increase of 2.4% a month earlier and an increase of 0.3% in corresponding month of last year i.e. August 2017.
6. Figures 1 and 2 show graphically the data of Table 1. Table 1.1 shows "Period Average" and "YoY" percent changes in indices of three years.

Figures 1 and 2 show graphically the data of Table 1. Table 1.1 shows "Period Average" and "YoY" percent changes in indices of three years.

Table 1: Inflation (%) (Base 2007-08)														
Period	CPI						Core Inflation				SPI**		WPI	
	General		Food		Non-food		NFNE*		Trimmed		YoY	MoM	YoY	MoM
	YoY	MoM	YoY	MoM	YoY	MoM	YoY	MoM	YoY	MoM				
Jul-17	2.9	0.3	-0.1	0.0	5.1	0.5	5.6	0.7	4.0	0.4	-0.4	-0.5	0.7	-0.2
Aug-17	3.4	0.2	1.3	0.4	5.0	0.1	5.5	0.1	4.2	0.1	-0.1	0.5	1.0	0.3
Sep-17	3.9	0.6	2.4	1.3	4.9	0.2	5.4	0.1	4.1	0.1	1.9	2.1	1.6	0.1
Oct-17	3.8	0.7	2.2	0.6	4.9	0.8	5.3	0.9	4.0	0.6	2.1	0.9	2.3	0.6
Nov-17	4.0	0.4	2.4	0.4	5.1	0.4	5.5	0.3	4.2	0.3	2.1	0.3	2.9	0.4
Dec-17	4.6	-0.1	3.8	-0.6	5.1	0.2	5.5	0.2	4.7	0.2	2.2	-0.7	3.4	0.4
Jan-18	4.4	0.0	3.7	-1.0	4.9	0.8	5.2	0.8	4.6	0.6	2.0	-1.0	4.7	1.8
Feb-18	3.8	-0.3	2.2	-1.1	4.9	0.2	5.2	0.2	4.3	0.1	0.5	-1.2	4.1	-0.1
Mar-18	3.2	0.3	0.1	-0.3	5.4	0.7	5.8	0.7	4.1	0.2	-1.8	-0.6	3.6	0.2
Apr-18	3.7	1.8	-0.2	1.5	6.4	2.1	7.0	2.5	5.0	1.6	-0.5	0.4	4.0	1.3
May-18	4.2	0.5	1.0	1.0	6.4	0.2	7.0	0.2	5.1	0.3	0.5	0.1	5.6	1.3
Jun-18	5.2	0.6	3.0	0.8	6.7	0.4	7.1	0.3	5.4	0.2	1.9	1.8	7.6	1.5
Jul-18	5.8	0.9	3.5	0.6	7.4	1.2	7.6	1.2	5.9	0.9	3.6	1.2	10.5	2.4
Aug-18	5.8	0.2	3.3	0.2	7.6	0.2	7.7	0.2	5.9	0.2	3.3	0.2	11.0	0.8

*NFNE is non-food non-energy, ** SPI for quintile 1. Digits 0.0* are due to rounding off.

Table 1.1 : Period Average and YoY % Changes of Indices (Base 2007-08)						
Index	Average July - August % changes			August % August changes		
	2018-19	2017-18	2016-17	2018	2017	2016
CPI	5.84	3.16	3.84	5.84	3.41	3.56
SPI	3.42	-0.24	1.94	3.26	-0.09	2.15
WPI	10.75	0.84	3.21	11.00	1.02	3.45

Figure 2: CPI Inflation MoM, Special Indices

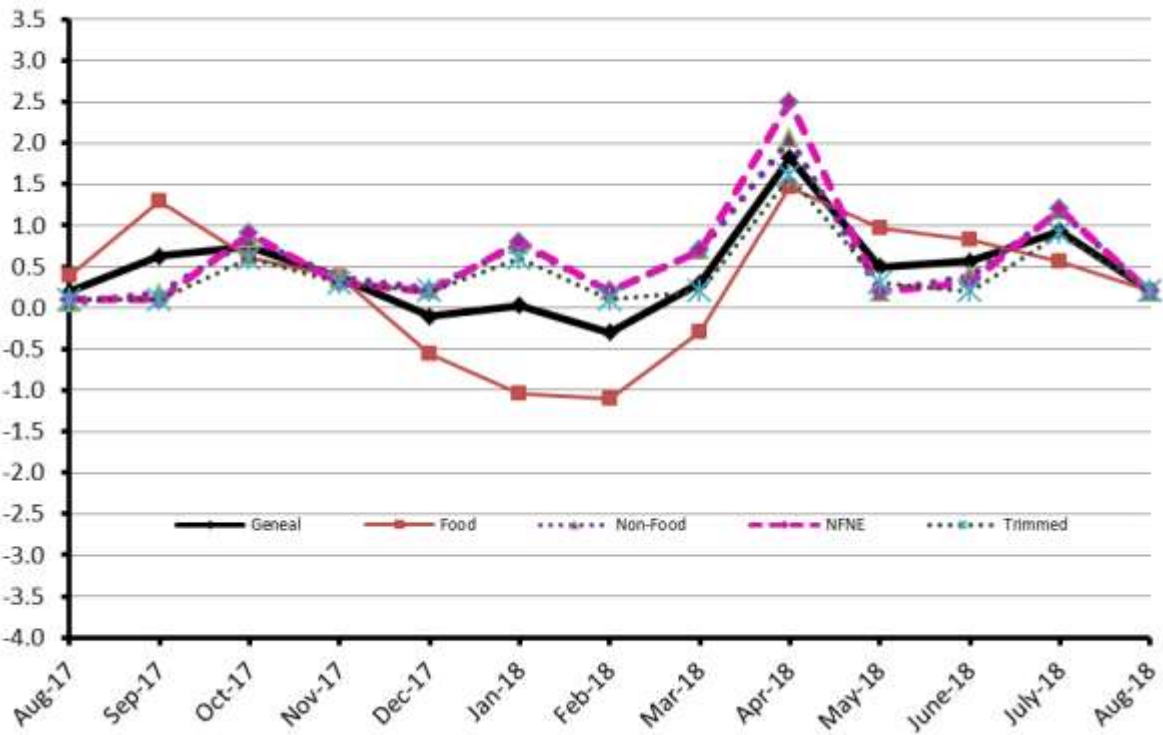
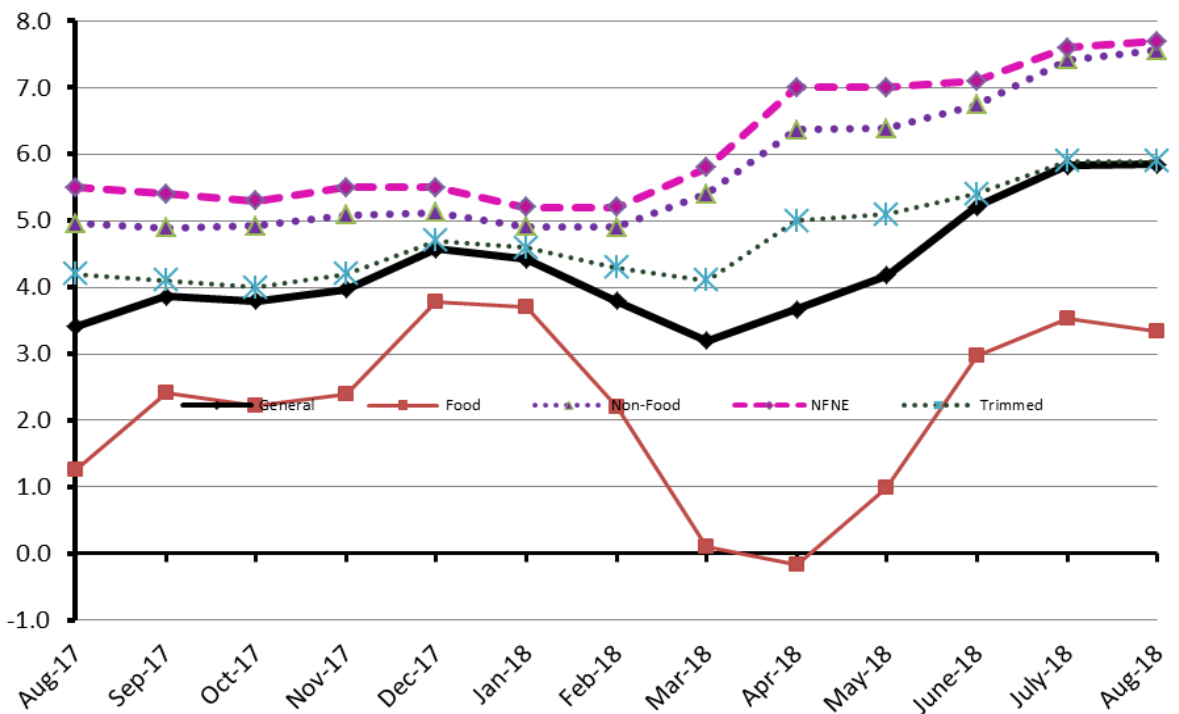


Figure 1: CPI Inflation YoY, Special Indices



II. Consumer Price Index (CPI)

The Consumer Price Index of August 2018, is increased by 0.21% over July 2018 and increased by 5.84% over corresponding month of the last year i.e. August 2017.

Table 2 : Consumer Price Index by Group of Commodities and Services (Base 2007-08)

No	Group	Group Weight (%)	Indices			% Change August 2018 Over		Impact (In % points) August 2018 Over	
			Aug 2018	July 2018	Aug 2017	July 2018	Aug 2017	July 2018	Aug 2017
	General	100.00	229.27	228.80	216.61	0.21	5.84	0.21	5.84
1.	Food & Non-alcoholic Bev.	34.83	238.58	238.08	230.99	0.21	3.29	0.08	1.22
	<i>Non-perishable Food Items</i>	<i>29.84</i>	<i>234.60</i>	<i>235.36</i>	<i>227.02</i>	<i>-0.32</i>	<i>3.34</i>	<i>-0.10</i>	<i>1.04</i>
	<i>Perishable Food Items</i>	<i>4.99</i>	<i>262.33</i>	<i>254.31</i>	<i>254.75</i>	<i>3.15</i>	<i>2.98</i>	<i>0.17</i>	<i>0.17</i>
2.	Alcoholic Bev.& Tobacco	1.41	313.47	313.65	306.25	-0.06	2.36	0.00	0.05
3.	Clothing & Footwear	7.57	254.67	254.13	239.19	0.21	6.47	0.02	0.54
4.	Housing, Water, Electricity, Gas & Fuels	29.41	210.80	210.71	198.93	0.04	5.97	0.01	1.61
5.	Furnishing & Household Equipment Maintenance	4.21	242.20	241.18	228.05	0.42	6.20	0.02	0.28
6.	Health	2.19	225.20	224.67	213.05	0.24	5.70	0.01	0.12
7.	Transport	7.20	204.74	202.71	174.61	1.00	17.26	0.06	1.00
8.	Communication	3.22	133.78	133.63	133.03	0.11	0.56	0.00	0.01
9.	Recreation & Culture	2.02	209.89	208.71	196.33	0.57	6.91	0.01	0.13
10.	Education	3.94	281.89	281.89	249.61	0.00	12.93	0.00	0.59
11.	Restaurants & Hotels	1.23	295.01	293.25	278.44	0.60	5.95	0.01	0.09
12.	Miscellaneous	2.76	264.45	265.48	248.46	-0.39	6.44	-0.01	0.20

Main contributors to month-on-month and year-on-year percentage changes are given below and detail is given in Annexure A.

1. Month-on-month Top few commodities which varied from previous month are given below: -

Food Items Increased: Tomatoes (47.59%), Onion (25.95%), Potatoes (6.84%), Besan (1.43%), Meat (1.42%), Gur (1.32%), Sugar (0.92%), Rice (0.91%), Honey (0.86%), Readymade Food (0.60%), Jam Tomato ketchup & Pickles (0.55%) and Spices (0.53%).

Decreased: Chicken (20.11%), Betel Leaves & Nuts (4.59%), Fresh Vegetables (3.46%), Fresh Fruits (3.02%), Eggs (2.39%), Gram Whole (0.82%), Pulse Moong (0.14%) and Pulse Mash (0.10%).

Non-food Items Increased: Motor Vehicles (2.41%), Recreation & Culture (1.91%), Motor Fuel (1.43%), Utensils (1.21%), Construction Input Items (1.10%), Dopatta (0.99%), Motor Vehicle Accessories (0.92%), Plastic Products (0.85%), Kerosene Oil (0.74%), Medical Equipments (0.72%), Household Equipments (0.69%), Medical Tests (0.66%), Washing Soaps & Detergents (0.60%), Cosmetics (0.58%), Construction Wage Rates (0.58%) and Transport Services (0.53%).

Non-food Items Decreased: Personal Equipments (1.71%).

2. Year-on-Year: Top few commodities which varied from previous year i.e. August 2017 are given below:-

Food Items Increased: Betel Leaves & Nuts (152.19%), Tomatoes (62.43%), Dry Fruits (11.34%), Meat (10.48%), Spices (9.34%), Rice (8.63%), Sweet Meat (7.51%), Tea (6.16%), Jam Tomato ketchup & Pickles (6.06%), Readymade Food (5.95%), Fresh Vegetables (5.87%), Condiments (5.85%), Fish (5.80%), and Honey (5.70%).

Decreased: Pulse Mash (24.24%), Potatoes (18.11%), Chicken (14.97%), Pulse Masoor (9.86%), Pulse Moong (8.93%), Gram Whole (6.99%), Sugar (6.91%), Pulse Gram (6.71%), Besan (4.93%), Fresh Fruits (3.11%) and Gur (2.68%).

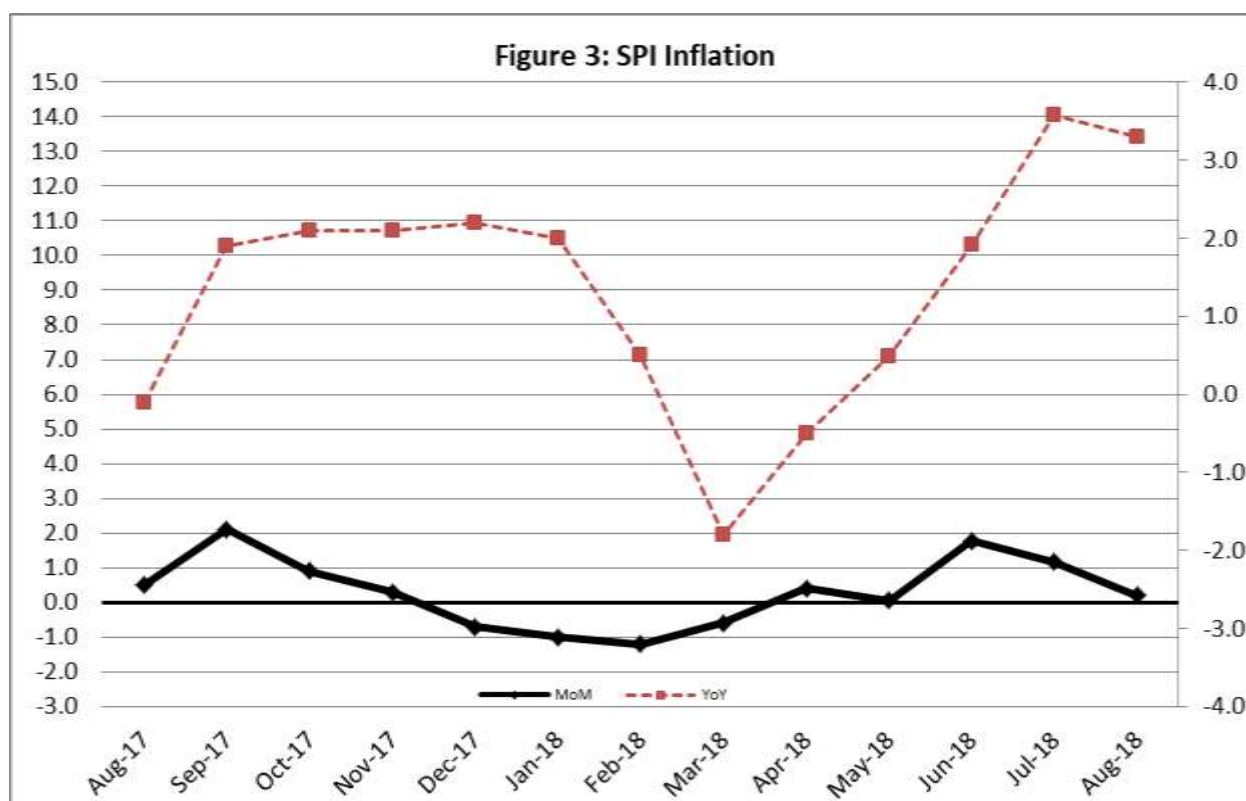
Non-food Items Increased: Kerosene Oil (38.54%), Motor Fuel (27.95%), Transport Services (14.16%), Education (12.93%), Motor Vehicles (11.51%), Newspapers (10.96%), Water Supply (10.63%), Construction Input Items (10.00%), Medical Tests (9.35%), Utensils (9.31%), Cosmetics (9.01%), Construction Wage Rates (8.82%), Postal Services (8.79%), Stationary (8.64%), Doctor (MBBS) Clinic Fee (8.35%) and Furniture (8.00%).

III. Sensitive Price Indicator

Quintile-wise percentage changes YoY and MoM are given below in Table 3. The series from August 2017 to August 2018 is also graphed below in Figure 3.

Table 3: Sensitive Price Indicator (Base 2007-08)					
Quintiles	Indices			% Change August, 2018 over	
	August, 2018	July, 2018	August,2017	July, 2018	August, 2017
1	216.72	216.24	209.88	0.22	3.26
2	225.06	224.93	217.74	0.06	3.36
3	226.81	226.95	219.08	-0.06	3.53
4	231.80	232.27	223.33	-0.20	3.79
5	230.84	231.79	220.36	-0.41	4.76
Combined	228.72	229.18	219.82	-0.20	4.05

Table 3.1 : Weekly Percentage Change of SPI During June, 2018				
Quintiles	% Change with Previous week			
	2 nd Aug-2018	9 th Aug-2018	16 th Aug-2018	30 th Aug-2018
Quintile 1	0.28	0.08	-0.40	-0.64
Combined	0.17	0.00	-0.41	-0.63



IV. Wholesale Price Index

The Wholesale Price Index for August, 2018 increased by 0.79% over July, 2018. It increased by 11.00% over the corresponding month of the last year. YoY and MoM movements, from August, 2017 to August, 2018 are also graphed below in Figure 4.

Table 4 : Wholesale Price Index by Group of Commodities (Base 2007-08)

No.	Group	Group Weight (%)	Indices			% Change Aug, 2018 over		Impact (in %age points) Aug, 2018 over	
			Aug. 2018	July. 2018	Aug, 2017	July. 2018	Aug, 2017	July. 2018	Aug, 2017
	General	100.00	241.93	240.04	217.96	0.79	11.00	0.79	11.00
1.	Agriculture, Forestry & Fishery Products	25.77	274.04	274.85	250.96	-0.29	9.20	-0.09	2.73
2.	Ores & Minerals, Electricity, Gas & Water	12.04	244.14	243.17	242.53	0.40	0.66	0.05	0.09
3.	Food Products, Beverages & Tobacco, Textiles, Apparel & Leather Products	31.11	247.95	243.73	226.39	1.73	9.52	0.55	3.08
	i. Food Products, Bev. & Tobacco	20.07	248.83	246.87	236.86	0.79	5.05	0.16	1.10
	ii. Textiles and Apparel	10.33	249.49	240.60	207.89	3.69	20.01	0.38	1.97
	iii. Leather Products	0.71	200.77	200.77	199.75	0.00	0.51	0.00	0.00
4.	Other Transportable Goods except Metal Products, Machinery & Equipment	22.37	216.87	214.04	170.93	1.32	26.88	0.26	4.71
5.	Metal Products, Machinery & Equipment	8.72	186.72	186.28	177.02	0.24	5.48	0.02	0.39

Main contributors to month-on-month and year-on-year percentage changes are given below and detail is given in Annexure B.

1. **Month-on-month** Top few commodities which varied from previous month i.e. July, 2018 are given below:-

Increased: Hard Board (12.00%), Ice Cream (7.61%), Potatoes (6.80%), Paints & Varnishes (6.74%), Cotton Yarn (6.67%), Chemicals (5.18%), Fibre Crops (3.37%), Steel Products (3.07%), Ceramics & Sanitary Fixture (2.83%), Furnace Oil (2.41%), Bajra (2.34%), Fertilizers (2.11%), Maize (1.79%), Other Oil Seeds (1.57%), Mobil Oil (1.52%), Sugar (1.45%), Fruit Juices (1.39%), Timber (1.22%), Stimulant & Spice Crops (1.16%), Blended Yarn (1.09%), Other Cereal Flour (1.05%), Auto Tyres & Meat (1.03%) each and Wheat & Processed Liquid Milk (1.00%) each.

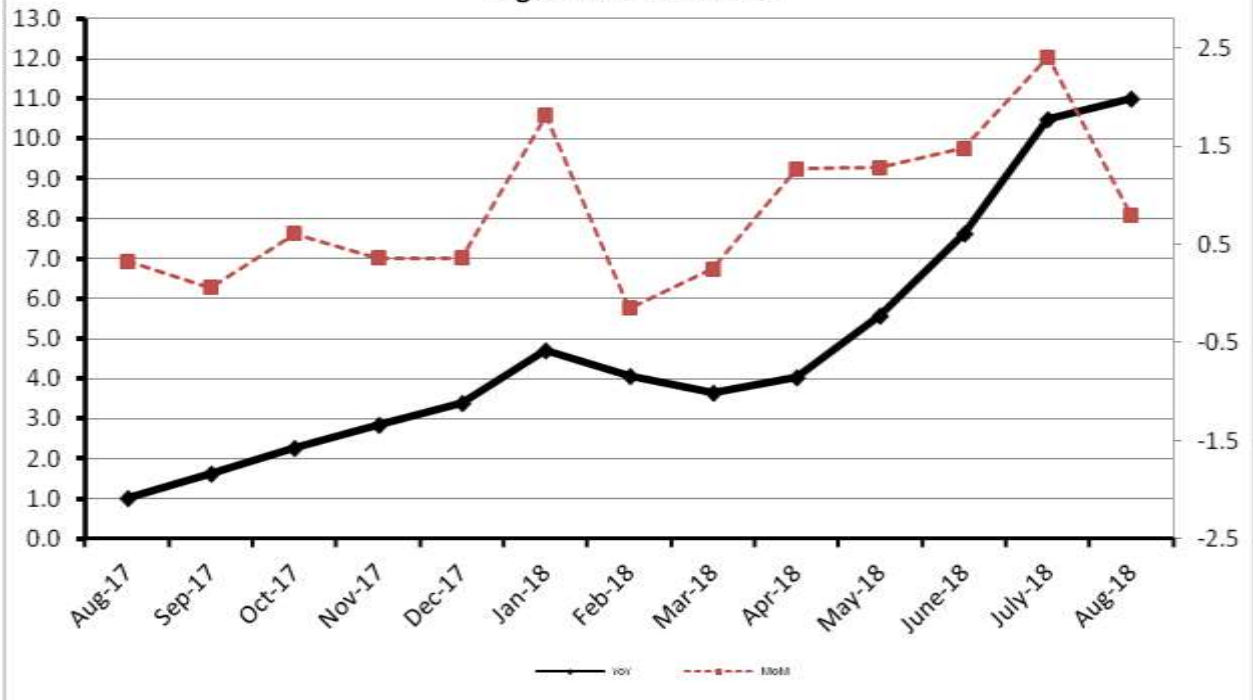
Decreased: Poultry (21.73%), Fresh Fruits (8.95%), Jowar (3.95%), Eggs (3.63%), Dry Fruits (3.60%) and Pulses (2.06%).

2. **Year-on-year** Top few commodities which varied from previous year i.e. August, 2017 are given below:-

Increased: Kerosene Oil (95.53%), Furnace Oil (72.37%), Diesel (62.07%), Bajra (58.97%), Petrol (40.13%), Jowar (39.79%), Cotton Yarn (38.29%), Fibre Crops (37.35%), Hard Board (29.63%), Steel Bar & Sheets (23.38%), Paints & Varnishes (20.36%), Stimulant & Spice Crops (19.52%), Dry Fruits (18.11%), Maize (17.33%), Vegetables (16.77%), Footwears (15.52%), Chemicals (14.48%), Dried Fruits & Nuts (13.57%), Meat (11.82%), Fertilizers (11.75%), Motor Vehicles (11.65%) and Towels (10.64%).

Decreased: Potatoes (19.01%), Poultry (16.32%) and Pulses (11.86%).

Figure 4: WPI Inflation



Annexure A:CPI by Commodity Groups and Commodities (2007-08=100)

Item and Specification	Weight	Index Numbers			% Change in August 2018 over			
		Aug 2018	Jul 2018	Aug 2017	Jul 2018	Aug 2017		
<i>General</i>	100.000	229.27	228.80	216.61	+	0.21	+	5.84
<i>Food and non-alcoholic Beverages</i>	34.8343	238.58	238.08	230.99	+	0.21	+	3.29
1 Wheat	0.3477	198.97	198.49	190.80	+	0.24	+	4.28
2 Wheat Flour	4.1648	212.13	211.75	203.10	+	0.18	+	4.45
3 Wheat Product	0.0959	213.31	213.01	212.62	+	0.14	+	0.32
4 Besan	0.1500	265.36	261.62	279.13	+	1.43	-	4.93
5 Rice	1.5821	197.74	195.96	182.03	+	0.91	+	8.63
6 Cereals	0.1563	264.58	263.90	255.72	+	0.26	+	3.46
7 Bakery & Confectionary	1.1550	228.93	228.08	218.89	+	0.37	+	4.59
8 Nimco	0.4574	260.84	260.65	255.83	+	0.07	+	1.96
9 Meat	2.4303	313.81	309.43	284.04	+	1.42	+	10.48
10 Chicken	1.3596	152.83	191.31	179.73	-	20.1	-	14.97
11 Fish	0.2970	228.91	228.91	216.37	+	0.00	+	5.80
12 Milk Fresh	6.6800	287.03	285.71	276.02	+	0.46	+	3.99
13 Milk Products	0.6338	277.39	277.00	265.43	+	0.14	+	4.51
14 Milk Powder	0.1129	245.56	244.99	234.41	+	0.23	+	4.76
15 Eggs	0.4555	199.90	204.79	197.47	-	2.39	+	1.23
16 Mustard Oil	0.0952	164.27	164.01	160.10	+	0.16	+	2.60
17 Cooking Oil	1.7538	141.32	140.90	138.09	+	0.30	+	2.34
18 Vegetable Ghee	2.0714	147.39	146.78	143.05	+	0.42	+	3.03
19 Dry Fruits	0.2543	293.19	293.12	263.32	+	0.02	+	11.34
20 Fresh Fruits	1.8649	259.58	267.66	267.92	-	3.02	-	3.11
21 Pulse Masoor	0.2712	157.72	157.67	174.98	+	0.03	-	9.86
22 Pulse Moong	0.2336	217.75	218.06	239.10	-	0.14	-	8.93
23 Pulse Mash (Washed)	0.2098	206.30	206.51	272.32	-	0.10	-	24.24
24 Pulse Gram	0.2361	257.89	257.38	276.43	+	0.20	-	6.71
25 Gram Whole	0.1616	267.44	269.64	287.53	-	0.82	-	6.99
26 Beans	0.0269	245.51	244.74	244.13	+	0.31	+	0.57
27 Potatoes	0.4598	218.08	204.11	266.30	+	6.84	-	18.11
28 Onion	0.5239	253.14	200.99	243.40	+	25.9	+	4.00
29 Tomatoes	0.4318	263.39	178.46	162.16	+	47.5	+	<u>62.43</u>
30 Fresh Vegetables	1.7105	280.39	290.45	264.85	-	3.46	+	5.87
31 Sugar	1.0445	199.54	197.72	214.35	+	0.92	-	6.91
32 Gur	0.0220	252.43	249.15	259.38	+	1.32	-	2.68
33 Honey	0.0446	351.07	348.07	332.15	+	0.86	+	5.70
34 SweetMeat	0.2483	271.54	271.48	252.57	+	0.02	+	7.51
35 Beverages	1.1990	233.42	233.36	226.10	+	0.03	+	3.24
36 Jam, Tomato Ketchup & Pickles	0.2454	232.81	231.54	219.51	+	0.55	+	6.06
37 Condiments	0.2656	286.39	285.60	270.57	+	0.28	+	5.85
38 Spices	0.5441	260.82	259.44	238.53	+	0.53	+	9.34
39 Tea	0.8377	306.97	306.22	289.16	+	0.24	+	6.16
<i>Alcoholic Beverages, Tobacco</i>	1.4135	313.47	313.65	306.25	-	0.06	+	2.36
40 Cigarettes	1.3906	308.24	307.93	307.18	+	0.10	+	0.35
41 Betel Leaves & Nuts	0.0229	630.86	661.19	250.15	-	4.59	+	152.19
<i>Clothing and footwear</i>	7.5708	254.67	254.13	239.19	+	0.21	+	6.47
42 Cotton Cloth	1.7286	247.77	247.24	232.48	+	0.21	+	6.58
43 Woolen Cloth	0.8759	267.11	266.09	257.77	+	0.38	+	3.62
44 Readymade Garments	0.9739	264.49	264.02	247.56	+	0.18	+	6.84
45 Woolen Readymade Garments	0.3964	266.61	266.61	258.31	+	0.00	+	3.21
46 Hosiery	0.5094	266.49	265.98	249.96	+	0.19	+	6.61

Annexure A:CPI by Commodity Groups and Commodities (2007-08=100)

Item and Specification	Weight	Index Numbers			% Change in August 2018 over		
		Aug 2018	Jul 2018	Aug 2017	Jul 2018	Aug 2017	
47 Dopatta	0.4412	265.73	263.12	246.66	+	0.99	+ 7.73
48 Cleaning and Laundry	0.2110	291.30	290.77	271.61	+	0.18	+ 7.25
49 Tailoring	0.8840	349.60	349.59	324.27	+	0.00	+ 7.81
50 Footwear	1.5504	179.97	179.77	167.45	+	0.11	+ 7.48
<u>Housing, water, Elec., Gas and other</u>	29.4149	210.80	210.71	198.93	+	0.04	+ 5.97
51 House Rent	21.8149	206.00	206.00	191.49	+	0.00	+ 7.58
52 Construction Input Items	0.5623	280.01	276.97	254.56	+	1.10	+ 10.00
53 Construction Wage Rates	0.3331	267.25	265.71	245.58	+	0.58	+ 8.82
54 Water Supply	0.4971	189.82	189.09	171.58	+	0.39	+ 10.63
55 Electricity	4.3985	238.10	238.10	238.10	+	0.00	+ 0.00
56 Gas	1.5756	158.08	158.08	158.08	+	0.00	+ 0.00
57 Kerosene Oil	0.0057	274.04	272.04	197.81	+	0.74	+ 38.54
58 Firewood Whole	0.2277	298.70	298.03	291.56	+	0.22	+ 2.45
<u>Furnishing and household</u>	4.2082	242.20	241.18	228.05	+	0.42	+ 6.20
59 Furniture	0.3315	237.77	236.67	220.16	+	0.46	+ 8.00
60 Household Textiles	0.6489	243.45	243.00	230.07	+	0.19	+ 5.82
61 Household Equipment	0.5936	192.31	190.99	183.18	+	0.69	+ 4.98
62 Utensils	0.3212	255.56	252.51	233.80	+	1.21	+ 9.31
63 Plastic Products	0.2547	227.91	225.98	211.37	+	0.85	+ 7.83
64 Washing Soaps & Detergents	0.7893	242.53	241.08	232.80	+	0.60	+ 4.18
65 Sewing Needle & Dr Cell	0.1496	221.16	219.36	207.74	+	0.82	+ 6.46
66 Household Servant	1.0432	271.59	271.59	254.90	+	0.00	+ 6.55
67 Marriage Hall Charges	0.0762	266.62	266.62	249.20	+	0.00	+ 6.99
<u>Health</u>	2.1868	225.20	224.67	213.05	+	0.24	+ 5.70
68 Drugs & Medicines	1.2667	190.58	190.05	185.27	+	0.28	+ 2.87
69 Medical Equipments	0.0080	261.95	260.09	251.81	+	0.72	+ 4.03
70 Doctor (MBBS) Clinic Fee	0.5904	304.41	304.41	280.95	+	0.00	+ 8.35
71 Medical Tests	0.3217	215.21	213.79	196.81	+	0.66	+ 9.35
<u>Transport</u>	7.2023	204.74	202.71	174.61	+	1.00	+ 17.26
72 Motor Vehicles	0.6630	196.91	192.28	176.59	+	2.41	+ 11.51
73 Motor Vehicle Accessories	0.2439	218.65	216.65	211.91	+	0.92	+ 3.18
74 Motor Fuel	3.0269	184.60	182.00	144.27	+	1.43	+ 27.95
75 Mechanical Service	0.4552	244.82	244.59	232.07	+	0.09	+ 5.49
76 Motor Vehicle Tax	0.1099	210.18	210.18	210.18	+	0.00	+ 0.00
77 Transport Services	2.7034	221.00	219.83	193.59	+	0.53	+ 14.16
<u>Communication</u>	3.2198	133.78	133.63	133.03	+	0.11	+ 0.56
78 Postal Services	0.0662	272.45	272.45	250.44	+	0.00	+ 8.79
79 Communication & Apparatus	3.1536	130.86	130.72	130.56	+	0.11	+ 0.23
<u>Recreation and culture</u>	2.0227	209.89	208.71	196.33	+	0.57	+ 6.91
80 Recreation & Culture	0.8634	137.22	134.65	129.38	+	1.91	+ 6.06
81 Text Books	0.5706	304.43	304.43	287.98	+	0.00	+ 5.71
82 Newspapers	0.1934	202.94	202.94	182.90	+	0.00	+ 10.96
83 Stationery	0.3953	235.55	235.12	216.82	+	0.18	+ 8.64
<u>Education</u>	3.9431	281.89	281.89	249.61	+	0.00	+ 12.93
84 Education	3.9431	281.89	281.89	249.61	+	0.00	+ 12.93
<u>Restaurants and hotels</u>	1.2286	295.01	293.25	278.44	+	0.60	+ 5.95
85 Readymade Food	1.2286	295.01	293.25	278.44	+	0.60	+ 5.95
<u>Misc. goods and services</u>	2.7550	264.45	265.48	248.46	-	0.39	+ 6.44
86 Personal Care	1.4935	240.91	239.94	229.77	+	0.40	+ 4.85
87 Cosmetics	0.3853	224.25	222.96	205.72	+	0.58	+ 9.01
88 Blades	0.0322	205.13	204.43	197.80	+	0.34	+ 3.71
89 Personal Equipments	0.8440	326.73	332.42	302.99	-	1.71	+ 7.84

Annexure B: Wholesale Price Indices by Major Groups & Commodities

(2007-08=100)

Item and Specification	Weight	Index Numbers			% Change in Aug 2018 over			
		Aug 18	Jul 18	Aug 17	Jul 2018	Aug 2017		
General	100.0000	241.93	240.04	217.96	+	0.79	+	11.00
Agriculture Forestry & Fisher	25.7674	274.04	274.85	250.96	-	0.29	+	9.20
001 Wheat	0.6297	204.53	202.51	194.17	+	1.00	+	5.34
002 Maize	0.6764	222.24	218.34	189.41	+	1.79	+	17.33
003 Rice	2.4413	181.28	181.75	168.81	-	0.26	+	7.39
004 Sorghum / Jowar	0.0214	293.20	305.26	209.74	-	3.95	+	39.79
005 Millet / Bajra	0.0374	249.84	244.12	157.16	+	2.34	+	58.97
006 Vegetables	1.2441	346.19	347.33	296.47	-	0.33	+	16.77
007 Fresh Fruits	1.5144	298.81	328.17	284.12	-	8.95	+	5.17
008 Dry Fruits	0.2478	275.54	285.82	233.30	-	3.60	+	18.11
009 Cotton Seeds	1.1511	268.41	267.32	278.51	+	0.41	-	3.63
010 Other Oil Seeds	0.0722	196.32	193.29	182.82	+	1.57	+	7.38
011 Edible Roots / Potatoes	0.2540	207.46	194.26	256.16	+	6.80	-	19.01
012 Stimulant & Spice Crops	0.1634	322.59	318.90	269.90	+	1.16	+	19.52
013 Pulses	0.4901	232.09	236.97	263.31	-	2.06	-	11.86
014 Sugar Crops	1.0725	257.62	257.62	268.94	+	0.00	-	4.21
015 Fibre Crops	5.3169	281.00	271.84	204.58	+	3.37	+	37.35
016 Unmanufactured Tobacco	0.0742	316.51	317.53	290.62	-	0.32	+	8.91
017 Poultry	0.5633	159.15	203.33	190.18	-	21.73	-	16.32
018 Raw Milk from Bovine Animals	7.0279	285.13	284.87	269.94	+	0.09	+	5.63
019 Eggs	0.5034	206.97	214.76	199.48	-	3.63	+	3.75
020 Raw Animal Materials / Wool	0.0351	176.92	176.84	172.91	+	0.05	+	2.32
021 Hides & Fur Skins, Raw	0.4834	97.22	97.06	100.98	+	0.16	-	3.72
022 Fuel Wood in Logs	0.0179	283.56	283.56	279.63	+	0.00	+	1.41
023 Fish Live Fresh or Chilled	1.7295	451.22	451.22	463.98	+	0.00	-	2.75
Ores/Minerals, Elec., Gas & W	12.0389	244.14	243.17	242.53	+	0.40	+	0.66
024 Coal not Agglomerated	0.7508	155.29	155.29	155.29	+	0.00	+	0.00
025 Natural Gas Liquefied	5.7385	213.53	211.49	210.37	+	0.96	+	1.50
026 Salt & Pure Sodium Chloride	0.0584	269.74	269.74	248.46	+	0.00	+	8.56
027 Electrical Energy	5.4912	288.00	288.00	288.00	+	0.00	+	0.00
Food, Beverages, Tobacco, Textil	31.1122	247.95	243.73	226.39	+	1.73	+	9.52
Food Products, Beverages &	20.0718	248.83	246.87	236.86	+	0.79	+	5.05
028 Meat of Animals	3.4559	339.60	336.15	303.71	+	1.03	+	11.82
029 Vegetables & Fruit Juice	0.0058	228.62	226.66	223.38	+	0.86	+	2.35
030 Dried Fruits & Nuts	0.1733	299.69	298.38	263.87	+	0.44	+	13.57
031 Fruit Juices	0.3880	188.66	186.08	182.38	+	1.39	+	3.44
032 Vegetable Oils Refined	1.9242	158.54	159.08	155.87	-	0.34	+	1.71
033 Vegetable Ghee	1.5632	130.77	130.51	126.04	+	0.20	+	3.75
034 Oil Cakes	0.9611	244.38	242.30	228.42	+	0.86	+	6.99
035 Processed Liquid Milk	4.4437	296.67	293.74	282.01	+	1.00	+	5.20
036 Milk & Cream in Solid Form	0.0316	225.34	224.54	222.44	+	0.36	+	1.30
037 Ice Cream	0.0047	286.26	266.02	266.02	+	7.61	+	7.61
038 Dairy Products N.E.C	0.0117	279.65	278.41	268.85	+	0.45	+	4.02
039 Wheat Flour	2.3034	193.24	191.95	186.18	+	0.67	+	3.79
040 Other Cereal Flour	0.0604	217.45	215.20	226.59	+	1.05	-	4.03
041 Sugar Refined	1.7975	210.94	207.93	221.26	+	1.45	-	4.66
042 Chocolate	0.0139	100.00	100.00	100.00	+	0.00	+	0.00
043 Sugar Confectionary	0.0738	127.25	127.25	128.44	+	0.00	-	0.93
044 Coffee & Tea	0.7303	279.34	277.31	258.68	+	0.73	+	7.99
045 Spices	0.1449	202.35	202.35	199.08	+	0.00	+	1.64
046 Other Food Products	0.0336	294.50	294.50	294.50	+	0.00	+	0.00
047 Mineral Water	0.0207	211.50	211.50	199.51	+	0.00	+	6.01
048 Beverages	0.6303	172.63	172.63	172.85	+	0.00	-	0.13
049 Tobacco Products	1.2998	319.65	318.37	318.37	+	0.40	+	0.40
Textiles & Apparels	10.3289	249.49	240.60	207.89	+	3.69	+	20.01
050 Cotton Yarn	5.2491	280.03	262.52	202.49	+	6.67	+	38.29
051 Nylon Yarn	0.1719	143.99	143.99	143.99	+	0.00	+	0.00
052 Blended Yarn	0.1689	200.05	197.90	183.38	+	1.09	+	9.09
053 Woven Fabrics	0.0128	321.49	321.49	316.28	+	0.00	+	1.65
054 Cotton Fabrics	0.6343	219.87	220.60	211.33	-	0.33	+	4.04
055 Other Fabrics	1.1016	227.85	227.85	227.16	+	0.00	+	0.30
056 Silk & Reyon Fabrics	0.7350	188.81	188.81	188.89	+	0.00	-	0.04
057 Towels	0.1235	305.52	305.52	276.14	+	0.00	+	10.64
058 Blankets	0.0029	265.03	265.03	247.52	+	0.00	+	7.07
059 Bed Sheets	0.0913	256.87	256.87	256.87	+	0.00	+	0.00

Annexure B: Wholesale Price Indices by Major Groups & Commodities

(2007-08=100)

Item and Specification	Weight	Index Numbers			% Change in Aug 2018 over	
		Aug 18	Jul 18	Aug 17	Jul 2018	Aug 2017
060 Quilts	0.0019	222.32	222.32	208.42	+ 0.00	+ 6.67
061 Woolen Carpets	0.0383	196.43	196.43	196.43	+ 0.00	+ 0.00
062 Synthetic Carpets	0.0566	131.80	130.95	130.95	+ 0.65	+ 0.65
063 Hosiery Products	0.8832	250.36	250.36	243.31	+ 0.00	+ 2.90
064 Readymade Garments	1.0576	204.85	204.85	201.37	+ 0.00	+ 1.73
Leather Products	0.7115	200.77	200.77	199.75	+ 0.00	+ 0.51
065 Leather Without Hair	0.2973	212.68	212.68	221.97	+ 0.00	- 4.19
066 Other Leather N.E.C	0.2567	207.02	207.02	207.31	+ 0.00	- 0.14
067 Footwears	0.1575	168.09	168.09	145.51	+ 0.00	+ 15.52
Other Transportable Goods	22.3659	216.87	214.04	170.93	+ 1.32	+ 26.88
068 Timber	0.0165	239.89	237.00	231.53	+ 1.22	+ 3.61
069 Printing Paper	0.4279	172.70	171.65	166.40	+ 0.61	+ 3.79
070 Hard Board	0.1579	291.67	260.42	225.00	+ 12.00	+ 29.63
071 Coke	0.2797	163.45	163.45	163.45	+ 0.00	+ 0.00
072 Motor Spirit	1.5336	164.49	164.49	117.38	+ 0.00	+ 40.13
073 Diesel Oil	5.2664	244.20	244.20	150.68	+ 0.00	+ <u>62.07</u>
074 Kerosine Oil	0.2151	229.00	229.00	117.12	+ 0.00	+ <u>95.53</u>
075 Furnace Oil	3.2664	175.33	171.20	101.72	+ 2.41	+ <u>72.37</u>
076 Mobil Oil	0.7114	209.31	206.18	201.29	+ 1.52	+ 3.98
077 Chemicals	1.7720	206.63	196.45	180.49	+ 5.18	+ 14.48
078 Dyeing Material	0.1539	150.72	150.72	146.55	+ 0.00	+ 2.85
079 Fertilizers	2.8657	241.32	236.33	215.94	+ 2.11	+ 11.75
080 Pesticides	0.2763	312.32	312.32	306.06	+ 0.00	+ 2.05
081 Insecticides	0.1276	145.90	144.49	142.41	+ 0.98	+ 2.45
082 Paints & Varnishes	0.1916	354.53	332.15	294.56	+ 6.74	+ 20.36
083 Medicines	1.1428	178.61	177.70	174.94	+ 0.51	+ 2.10
084 Soaps & Detergents	0.8168	193.00	191.52	191.20	+ 0.77	+ 0.94
085 Auto Tyres	0.2703	178.97	177.14	177.07	+ 1.03	+ 1.07
086 Plastic Products	0.4550	240.38	240.35	225.88	+ 0.01	+ 6.42
087 Glass sheets	0.2089	304.55	304.55	298.97	+ 0.00	+ 1.87
088 Other Glass Articles	0.1635	318.10	318.10	317.24	+ 0.00	+ 0.27
089 Ceramics & Sanitary Fixture	0.0244	243.24	236.54	232.65	+ 2.83	+ 4.55
090 Bricks, Blocks & Tiles	0.1566	223.76	223.37	221.50	+ 0.17	+ 1.02
091 Cement	1.8145	238.70	237.45	221.52	+ 0.53	+ 7.76
092 Bed Foam	0.0006	176.50	175.33	170.33	+ 0.67	+ 3.62
093 Matches	0.0505	171.36	171.36	171.36	+ 0.00	+ 0.00
Metal Product, Machinery & Eq	8.7156	186.72	186.28	177.02	+ 0.24	+ 5.48
094 Pig Iron	0.0593	128.97	128.97	128.97	+ 0.00	+ 0.00
095 Steel Bar & Sheets	1.4022	170.86	169.64	138.48	+ 0.72	+ 23.38
096 Pipe Fittings	0.0780	234.48	234.48	215.66	+ 0.00	+ 8.73
097 Steel Products	0.3879	182.68	177.24	177.56	+ 3.07	+ 2.88
098 Engines & Motors	0.0046	116.98	116.98	116.98	+ 0.00	+ 0.00
099 Vacuum Pumps	0.0155	123.69	123.69	123.69	+ 0.00	+ 0.00
100 Air Conditioners	0.0049	203.80	203.80	200.10	+ 0.00	+ 1.85
101 Cultivators	0.0551	190.66	190.66	190.66	+ 0.00	+ 0.00
102 Chuff Cutter	0.1293	153.46	153.46	153.46	+ 0.00	+ 0.00
103 Tractors	0.0028	216.82	216.82	201.75	+ 0.00	+ 7.47
104 Lathe Machines	0.0525	241.06	241.06	241.06	+ 0.00	+ 0.00
105 Concrete Mixture	0.0107	138.83	138.83	138.83	+ 0.00	+ 0.00
106 Fridge,WashM,SewM,Fans,Iron	1.1645	228.73	228.73	214.97	+ 0.00	+ 6.40
107 Electric Wires	0.0912	208.22	208.22	205.92	+ 0.00	+ 1.12
108 Lighting Equipments	1.4431	174.04	174.04	170.73	+ 0.00	+ 1.94
109 Radio & Television	0.1843	140.42	140.42	140.42	+ 0.00	+ 0.00
110 Motor Vehicles	0.0244	218.11	218.11	195.36	+ 0.00	+ 11.65
111 Motorcycles	0.2570	134.21	134.21	125.89	+ 0.00	+ 6.61
112 Bicycles	3.3483	191.22	191.22	187.65	+ 0.00	+ 1.90