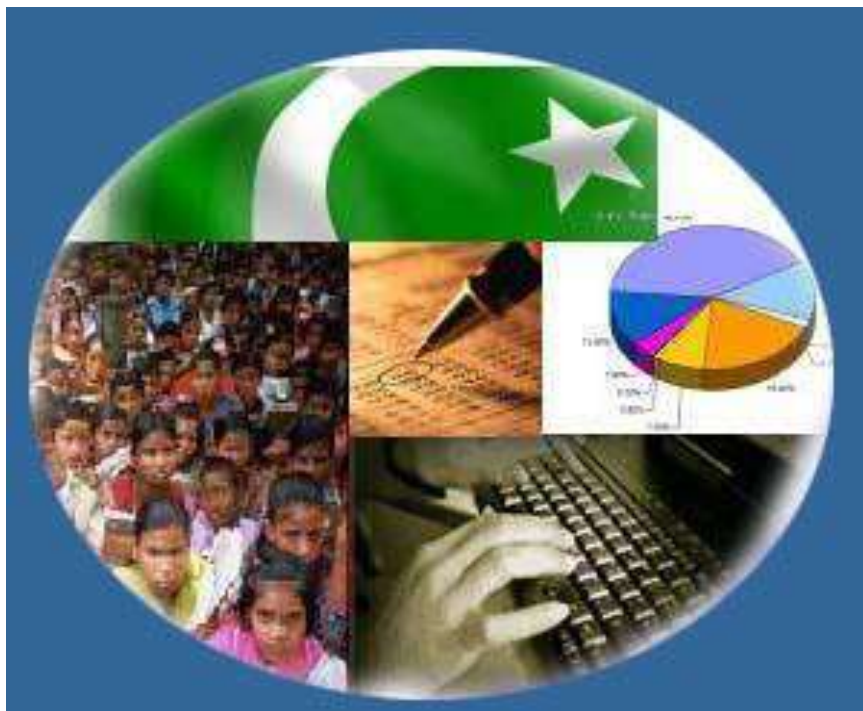




Monthly Review on Price Indices



September, 2017
(Base 2007-08)

Government of Pakistan
Statistics Division
Pakistan Bureau of Statistics
Islamabad

Inflation in Brief

1. CPI inflation General increased by 3.9% on year-on-year basis in September 2017 as compared to an increase of 3.4% in the previous month and 3.9% in September 2016. On month-on-month basis, it increased by 0.6% in September 2017 as compared to an increase of 0.2% in the previous month and increase of 0.2% in September 2016.
2. Core inflation measured by non-food non-energy CPI (Core NFNE) increased by 5.4% on (YoY) basis in September 2017 as compared to an increase of 5.5% in the previous month and 4.8% in September 2016. On (MoM) basis, it increased by 0.1% in September 2017 as compared to increase of 0.1% in previous month, and an increase of 0.3% in corresponding month of last year i.e. September 2016.
3. Core inflation, measured by 20% weighted trimmed mean CPI (Core Trimmed) increased by 4.1% on (YoY) basis in September 2017 as compared to 4.2% in the previous month and by 3.7% in September 2016. On (MoM) basis, it increased by 0.1% in September 2017 as compared to an increase of 0.1% in the previous month and an increase of 0.1% in corresponding month of last year i.e. September 2016.
4. SPI inflation on YoY increased by 1.9% in September 2017 as compared to a decrease of 0.1% a month earlier and an increase of 1.8% in September 2016. On MoM basis, it increased by 2.1% in September 2017 as compared to an increase of 0.5% a month earlier and an increase of 0.1% in September 2016.
5. WPI inflation on YoY basis increased by 1.6% in September 2017 as compared to an increase of 1.0% a month earlier and an increase of 3.4% in September 2016. WPI inflation on MoM basis increased by 0.1% in September 2017 as compared to a decrease of 0.3% a month earlier and a decrease of 0.5% in corresponding month of last year i.e. September 2016.
6. Figures 1 and 2 show graphically the data of Table 1. Table 1.1 shows "Period Average" and "YoY" percent changes in indices of three years.

Table 1: Inflation (%) (Base 2007-08)

Period	CPI						Core Inflation				SPI**		WPI	
	General		Food		Non-food		NFNE*		Trimmed		YoY	MoM	YoY	MoM
	YoY	MoM	YoY	MoM	YoY	MoM	YoY	MoM	YoY	MoM				
Aug-16	3.6	-0.3	3.4	-0.9	3.7	0.2	4.6	0.2	3.5	0.1	2.2	0.2	3.5	0.0
Sep-16	3.9	0.2	4.0	0.1	3.8	0.2	4.8	0.3	3.7	0.1	1.8	0.1	3.4	-0.5
Oct-16	4.2	0.8	4.4	0.8	4.1	0.8	5.2	0.9	3.8	0.6	1.3	0.7	2.8	0.0
Nov-16	3.8	0.2	3.3	0.2	4.1	0.2	5.3	0.2	3.8	0.2	0.6	0.3	2.6	-0.2
Dec-16	3.7	-0.7	3.0	-1.9	4.2	0.2	5.2	0.1	3.7	0.1	0.5	-0.8	3.1	-0.1
Jan-17	3.7	0.2	2.6	-1.0	4.4	1.0	5.4	1.1	3.8	0.6	0.4	-0.8	4.2	0.5
Feb-17	4.2	0.3	3.7	0.3	4.6	0.3	5.3	0.2	4.1	0.2	1.1	0.2	5.3	0.5
Mar-17	4.9	0.8	5.0	1.9	4.9	0.1	5.3	0.1	4.5	0.2	3.1	1.8	6.4	0.7
Apr-17	4.8	1.4	4.4	1.7	5.1	1.2	5.5	1.3	4.8	0.8	2.3	-0.9	6.0	0.9
May-17	5.0	0.0	4.9	-0.2	5.1	0.2	5.5	0.2	4.8	0.2	2.4	-0.9	5.2	-0.2
Jun-17	3.9	-0.4	2.4	-1.1	5.0	0.1	5.5	0.1	4.2	0.0	1.4	0.1	3.3	-0.5
Jul-17	2.9	0.3	-0.1	0.0	5.1	0.5	5.6	0.7	4.0	0.4	-0.4	-0.5	0.7	-0.2
Aug-17	3.4	0.2	1.3	0.4	5.0	0.1	5.5	0.1	4.2	0.1	-0.1	0.5	1.0	0.3
Sep-17	3.9	0.6	2.4	1.3	4.9	0.2	5.4	0.1	4.1	0.1	1.9	2.1	1.6	0.1

*NFNE is non-food non-energy, ** SPI for quintile 1. Digits 0.0* are due to rounding off.

Table 1.1 : Period Average and YoY % Changes of Indices (Base 2007-08)

Index	Averages July-September % Changes			September over September % Changes		
	2017-18	2016-17	2015-16	2017	2016	2015
CPI	3.39	3.86	1.66	3.86	3.88	1.32
SPI	0.48	1.89	-1.09	1.92	1.81	-1.29
WPI	1.10	3.29	-3.10	1.62	3.38	-3.47

Figure 1: CPI Inflation YoY, Special Indices

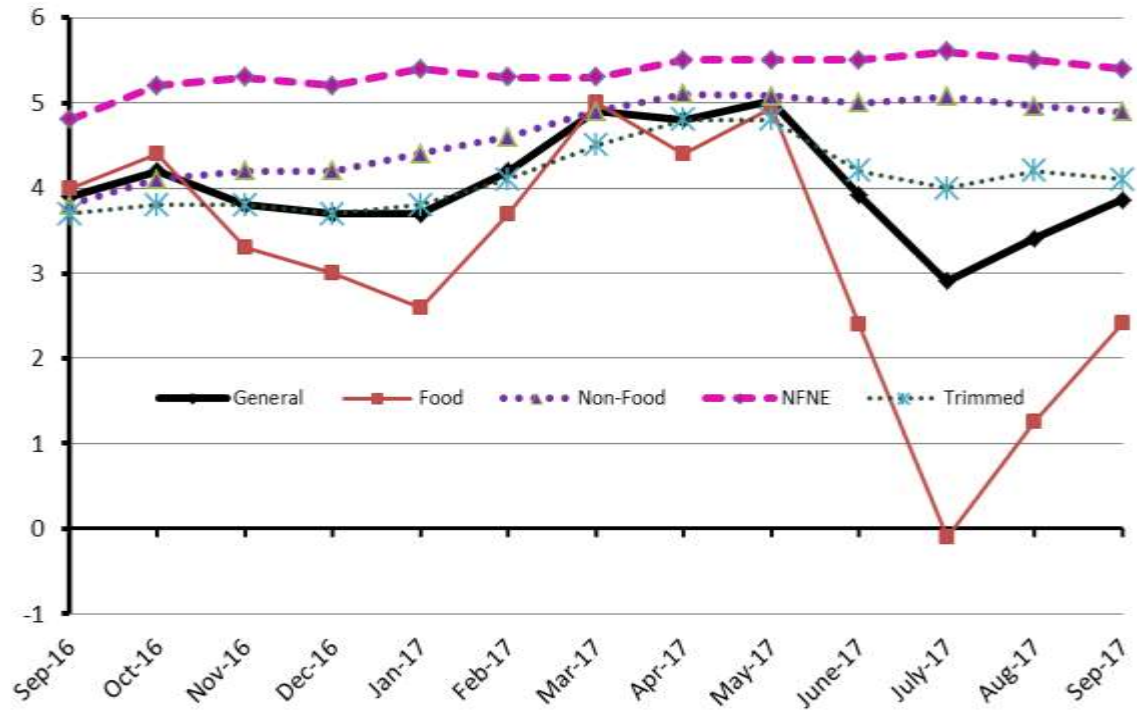
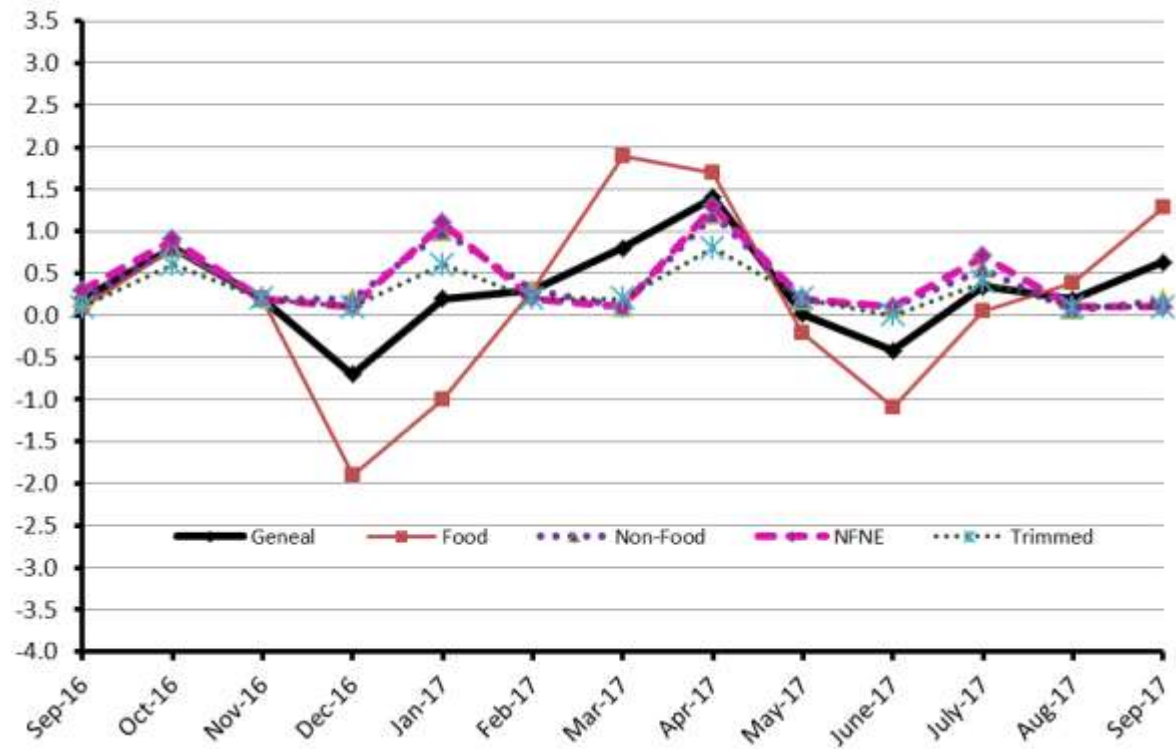


Figure 2: CPI Inflation MoM, Special Indices



II. Consumer Price Index (CPI)

The Consumer Price Index of September 2017, is increased by 0.75% over August 2017 and increased by 3.98% over corresponding month of the last year i.e. September 2016.

Table 2 : Consumer Price Index by Group of Commodities and Services (Base 2007-08)

No	Group	Group Weight (%)	Indices			% Change September 2017 Over		Impact (In % points) September 2017 Over	
			Sept 2017	August 2017	Sept 2016	Aug 2017	Sept 2016	Aug 2017	Sept 2016
	General	100.00	217.98	216.61	209.88	0.63	3.86	0.63	3.86
1.	Food & Non-alcoholic Bev.	34.83	234.23	230.99	226.30	1.40	3.50	0.52	1.32
	Non-perishable Food Items	29.84	225.49	227.02	222.87	-0.67	1.18	-0.21	0.37
	Perishable Food Items	4.99	286.53	254.75	246.80	12.47	16.10	0.73	0.94
2.	Alcoholic Bev. & Tobacco	1.41	304.80	306.25	364.13	-0.47	-16.29	-0.01	-0.40
3.	Clothing & Footwear	7.57	239.52	239.19	230.47	0.14	3.93	0.01	0.33
4.	Housing, Water, Electricity, Gas & Fuels	29.41	198.95	198.93	188.90	0.01	5.32	0.00	1.41
5.	Furnishing & Household Equipment Maintenance	4.21	229.10	228.05	222.27	0.46	3.07	0.02	0.14
6.	Health	2.19	213.90	213.05	192.00	0.40	11.41	0.01	0.23
7.	Transport	7.20	175.74	174.61	170.31	0.65	3.19	0.04	0.19
8.	Communication	3.22	133.04	133.03	130.88	0.01	1.65	0.00	0.03
9.	Recreation & Culture	2.02	196.78	196.33	196.15	0.23	0.32	0.00	0.01
10.	Education	3.94	249.61	249.61	230.54	0.00	8.27	0.00	0.34
11.	Restaurants & Hotels	1.23	281.08	278.44	266.11	0.95	5.63	0.01	0.09
12.	Miscellaneous	2.76	250.12	248.67	236.99	0.67	5.54	0.02	0.17

Main contributors to month-on-month and year-on-year percentage changes are given below and detail is given in Annexure A.

1. Month-on-month Top few commodities which varied from previous month are given below:-

Food Items Increased: Onion (98.33%), Tomatoes (58.46%), Fresh Vegetable (10.16%), Eggs (4.0%), Wheat (2.1%) and Gram Whole (1.68%).

Decreased: Chicken (16.19%), Fresh Fruits (11.13%), Sugar (6.69%), Pulse Masoor (1.95%), Tea (1.75%), Pulse Mash (1.11%) and Besan (1.08%).

Non-food Items Increased: Motor Fuel (1.73%), Personal Equipments (1.45%) and Household Servants (0.94%).

Decreased: Firewood Whole (0.08%).

2. Year-on-Year: Top few commodities which varied from previous year i.e. September 2016 are given below:-

Food Items Increased: Onion (153.49%), Tomatoes (33.57%), Rice (13.92%), Tea (11.10%), Potatoes (8.98%), Meat (7.41%), Readymade Food (5.63%) Honey (4.81%), and Mustard oil (4.15%).

Decreased: Pulse Mash (25.01%), Sugar (21.05%), Pulse Gram (19.49%), Pulse Masoor (19.11%), Pulse Moong (17.75%), Cigarettes (16.51%), Besan (12.57%) and Gur (10.44%).

Non-food Items Increased: Drugs & Medicines (16.82%), Education (8.27%), Motor Fuel (7.91%) Tailoring (7.35%), House Rent (7.19%), Doctor (MBBS) Clinic Fee (6.79%), Construction wage Rates (6.75%), Cleaning and Laundry (6.63%) and Personal Equipments (6.15%).

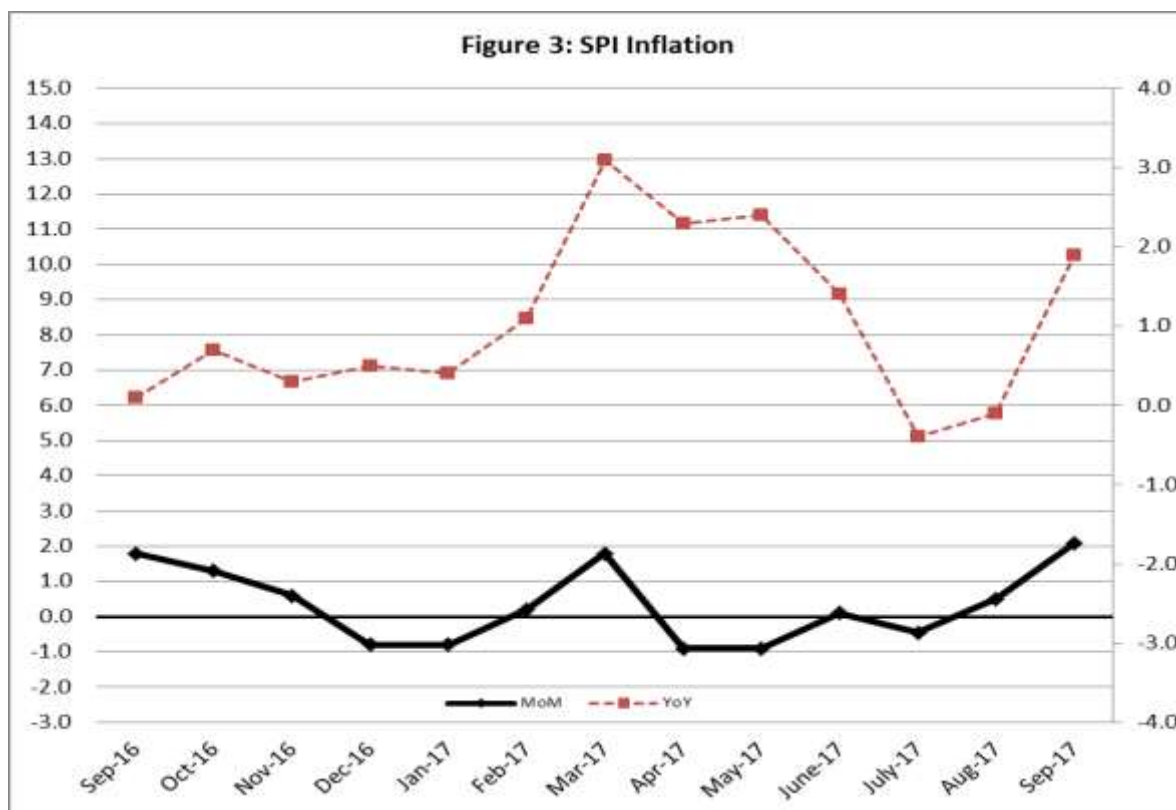
Decreased: Recreational & culture (0.15%) and Motor Vehicle Accessories (0.05%).

III. Sensitive Price Indicator

Quintile-wise percentage changes YoY and MoM are given below in Table 3. The series from September 2016 to September 2017 is also graphed below in Figure 3.

Table 3: Sensitive Price Indicator (Base 2007-08)					
Quintiles	Indices			% Change August 2017 over	
	September 2017	August 2017	September 2016	August 2017	September 2016
1	214.35	209.88	210.31	2.13	1.92
2	221.82	217.74	219.35	1.87	1.13
3	222.98	219.08	218.33	1.78	2.13
4	226.93	223.33	222.70	1.61	1.90
5	223.41	220.36	219.03	1.38	2.00
Combined	223.38	219.82	218.67	1.62	2.15

Table 3.1 : Weekly Percentage Change of SPI During September-17				
Quintiles	% Change with Previous week			
	7 rd Sep-2017	14 rd Sep-2017	21 th Sep -2017	27 th Sep -2017
Quantile 1	0.74	-0.22	0.70	0.88
Combined	0.58	-0.27	0.61	0.78



IV. Wholesale Price Index

The Wholesale Price Index for September, 2017 increased by 0.06% over August, 2017. It increased by 1.62% over the corresponding month of the last year. YoY and MoM movements, from September, 2016 to September, 2017 are also graphed below in Figure 4.

Table 4 : Wholesale Price Index by Group of Commodities (Base 2007-08)									
No.	Group	Group Weight (%)	Indices			% Change September, 2017 over		Impact (in %age points) September, 2017 over	
			Sept. 2017	August 2017	Sept. 2016	August 2017	Sept. 2016	August 2017	Sept. 2016
	General	100.00	218.08	217.96	214.61	0.06	1.62	0.06	1.62
1.	Agriculture, Forestry & Fishery Products	25.77	252.05	250.96	246.87	0.43	2.10	0.13	0.62
2.	Ores & Minerals, Electricity, Gas & Water	12.04	242.68	242.53	241.64	0.06	0.43	0.01	0.06
3.	Food Products, Beverages & Tobacco, Textiles, Apparel & Leather Products	31.11	225.30	226.39	225.26	-0.48	0.02	-0.16	0.01
	i. Food Products, Bev. & Tobacco	20.07	235.42	236.86	238.26	-0.61	-1.19	-0.13	-0.27
	ii. Textiles and Apparel	10.33	207.40	207.89	201.78	-0.24	2.79	-0.02	0.27
	iii. Leather Products	0.71	199.75	199.75	199.41	0.00	0.17	0.00	0.00
4.	Other Transportable Goods except Metal Products, Machinery & Equipment	22.37	171.64	170.93	164.47	0.42	4.36	0.07	0.75
5.	Metal Products, Machinery & Equipment	8.72	177.12	177.02	172.51	0.06	2.67	0.00	0.19

Main contributors to month-on-month and year-on-year percentage changes are given below and detail is given in Annexure B.

1. **Month-on-month** Top few commodities which varied from previous month i.e. August, 2017 are given below:-

Increased: Vegetables (34.99%), Poultry (18.93%), Stimulant & Spice Crops (8.96%), Potatoes (5.98%), Mineral water (3.43%), Petrol (2.88%), Eggs (2.47%), Quilts (2.22%), Furnace Oil (2.18%), Bajra (1.84%), Other Oil Seeds (1.72%), Dried Fruits & Nuts (1.60%), Spices (1.43%), Paints & Varnishes (1.40%), Maize & Jowar (1.06%) each and Medicines (1.02%).

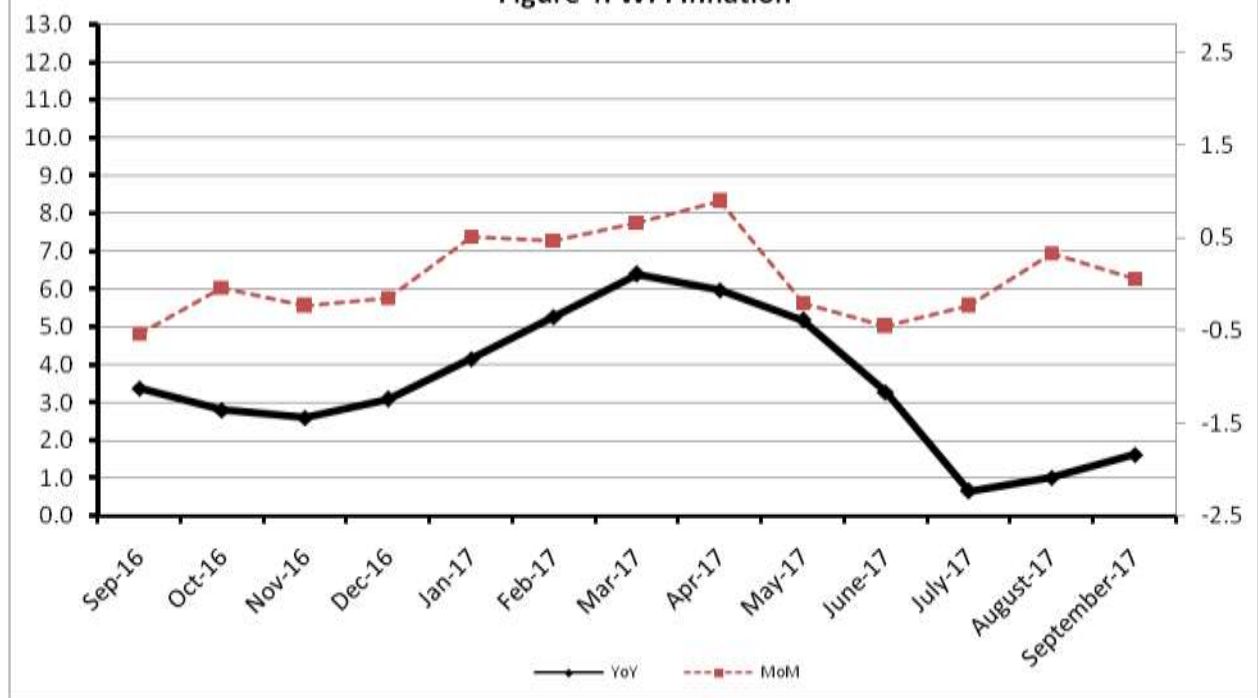
Decreased: Fresh Fruits (10.63%), Cotton Seeds (6.60%), Sugar (5.22%), Fish (5.09%), Oil Cakes (4.13%), Fiber Crops (2.40%), Hides & Fur Skins (2.39%) and Coffee & Tea (1.31%).

2. **Year-on-year** Top few commodities which varied from previous year i.e. September, 2016 are given below:-

Increased: Poultry (41.33%), Furnace Oil (28.83%), Glass Sheets (20.58%), Steel Bar & Sheets (15.26%), Unmanufactured Tobacco (14.69%), Hard Board (13.68%), Woven Fabrics (13.08%), Vegetables (12.96%), Stimulant & Spice Crops (12.87%), Rice (12.79%) and Dried Fruits & Nuts (12.35%).

Decreased: Hides & Fur Skins (30.81%), Tobacco Products (26.82%), Other Cereal Flour (23.98%), Bajra (23.80%), Sugar (22.10%), Jowar (19.73%), Pulses (13.36%) and Cultivators (13.24%).

Figure 4: WPI Inflation



Annexure A:CPI by Commodity Groups and Commodities (2007-08=100)

Item and Specification	Weight	Index Numbers			% Change in Sep 2017 over			
		Sep 2017	Aug 2017	Sep 2016	Aug 2017	Sep 2016		
<i>General</i>	100.0000	217.98	216.61	209.88	+	0.63	+	3.86
<i>Food and non-alcoholic Beverages</i>	34.8343	234.23	230.99	226.30	+	1.40	+	3.50
1 Wheat	0.3477	194.80	190.80	194.03	+	2.10	+	0.40
2 Wheat Flour	4.1648	204.81	203.10	209.04	+	0.84	-	2.02
3 Wheat Product	0.0959	213.67	212.62	216.37	+	0.49	-	1.25
4 Besan	0.1500	276.11	279.13	315.81	-	1.08	-	12.57
5 Rice	1.5821	182.86	182.03	160.52	+	0.46	+	13.92
6 Cereals	0.1563	255.64	255.72	250.17	-	0.03	+	2.19
7 Bakery & Confectionary	1.1550	218.99	218.89	215.16	+	0.05	+	1.78
8 Nimco	0.4574	255.84	255.83	248.88	+	0.00	+	2.80
9 Meat	2.4303	283.65	284.04	264.07	-	0.14	+	7.41
10 Chicken	1.3596	150.63	179.73	151.17	-	16.19	-	0.36
11 Fish	0.2970	215.33	216.37	216.97	-	0.48	-	0.76
12 Milk Fresh	6.6800	276.04	276.02	266.39	+	0.01	+	3.62
13 Milk Products	0.6338	267.30	265.43	256.76	+	0.70	+	4.11
14 Milk Powder	0.1129	234.64	234.41	237.04	+	0.10	-	1.01
15 Eggs	0.4555	205.37	197.47	202.98	+	4.00	+	1.18
16 Mustard Oil	0.0952	160.21	160.10	153.83	+	0.07	+	4.15
17 Cooking Oil	1.7538	138.10	138.09	133.69	+	0.01	+	3.30
18 Vegetable Ghee	2.0714	143.03	143.05	137.89	-	0.01	+	3.73
19 Dry Fruits	0.2543	263.91	263.32	258.62	+	0.22	+	2.05
20 Fresh Fruits	1.8649	238.11	267.92	233.93	-	11.13	+	1.79
21 Pulse Masoor	0.2712	171.56	174.98	212.10	-	1.95	-	19.11
22 Pulse Moong	0.2336	236.76	239.10	287.84	-	0.98	-	17.75
23 Pulse Mash (Washed)	0.2098	269.29	272.32	359.08	-	1.11	-	25.01
24 Pulse Gram	0.2361	275.47	276.43	342.16	-	0.35	-	19.49
25 Gram Whole	0.1616	292.37	287.53	301.53	+	1.68	-	3.04
26 Beans	0.0269	242.94	244.13	233.29	-	0.49	+	4.14
27 Potatoes	0.4598	267.60	266.30	245.55	+	0.49	+	8.98
28 Onion	0.5239	482.74	243.40	190.44	+	98.33	+	153.49
29 Tomatoes	0.4318	256.96	162.16	192.38	+	58.46	+	33.57
30 Fresh Vegetables	1.7105	291.76	264.85	292.17	+	10.16	-	0.14
31 Sugar	1.0445	200.00	214.35	253.32	-	6.69	-	21.05
32 Gur	0.0220	261.22	259.38	291.67	+	0.71	-	10.44
33 Honey	0.0446	332.15	332.15	316.91	+	0.00	+	4.81
34 SweetMeat	0.2483	253.51	252.57	244.89	+	0.37	+	3.52
35 Beverages	1.1990	226.34	226.10	221.86	+	0.11	+	2.02
36 Jam, Tomato Ketchup & Pickles	0.2454	220.13	219.51	215.46	+	0.28	+	2.17
37 Condiments	0.2656	271.56	270.57	262.69	+	0.37	+	3.38
38 Spices	0.5441	238.80	238.53	241.44	+	0.11	-	1.09
39 Tea	0.8377	284.10	289.16	255.71	-	1.75	+	11.10
<i>Alcoholic Beverages, Tobacco</i>	1.4135	304.80	306.25	364.13	-	0.47	-	16.29
40 Cigarettes	1.3906	305.67	307.18	366.11	-	0.49	-	16.51
41 Betel Leaves & Nuts	0.0229	251.93	250.15	244.31	+	0.71	+	3.12
<i>Clothing and footwear</i>	7.5708	239.52	239.19	230.47	+	0.14	+	3.93
42 Cotton Cloth	1.7286	232.67	232.48	225.04	+	0.08	+	3.39
43 Woolen Cloth	0.8759	257.77	257.77	245.97	+	0.00	+	4.80
44 Readymade Garments	0.9739	247.97	247.56	236.67	+	0.17	+	4.77
45 Woolen Readymade Garments	0.3964	259.27	258.31	253.26	+	0.37	+	2.37
46 Hosiery	0.5094	251.70	249.96	242.93	+	0.70	+	3.61

Annexure A:CPI by Commodity Groups and Commodities (2007-08=100)

Item and Specification	Weight	Index Numbers			% Change in Sep 2017 over		
		Sep 2017	Aug 2017	Sep 2016	Aug 2017	Sep 2016	
47 Dopatta	0.4412	246.66	246.66	241.02	+	0.00	+ 2.34
48 Cleaning and Laundry	0.2110	272.37	271.61	255.44	+	0.28	+ 6.63
49 Tailoring	0.8840	324.65	324.27	302.43	+	0.12	+ 7.35
50 Footwear	1.5504	167.46	167.45	166.49	+	0.01	+ 0.58
<u>Housing, water, Elec., Gas and other fuels</u>	29.4149	198.95	198.93	188.90	+	0.01	+ 5.32
51 House Rent	21.8149	191.49	191.49	178.64	+	0.00	+ 7.19
52 Construction Input Items	0.5623	255.47	254.56	247.89	+	0.36	+ 3.06
53 Construction Wage Rates	0.3331	245.96	245.58	230.40	+	0.15	+ 6.75
54 Water Supply	0.4971	171.58	171.58	163.32	+	0.00	+ 5.06
55 Electricity	4.3985	238.10	238.10	238.10	+	0.00	+ 0.00
56 Gas	1.5756	158.08	158.08	158.08	+	0.00	+ 0.00
57 Kerosene Oil	0.0057	198.39	197.81	195.07	+	0.29	+ 1.70
58 Firewood Whole	0.2277	291.34	291.56	283.60	-	0.08	+ 2.73
<u>Furnishing and household equipment</u>	4.2082	229.10	228.05	222.27	+	0.46	+ 3.07
59 Furniture	0.3315	220.81	220.16	212.26	+	0.30	+ 4.03
60 Household Textiles	0.6489	231.08	230.07	221.14	+	0.44	+ 4.49
61 Household Equipment	0.5936	183.36	183.18	179.16	+	0.10	+ 2.34
62 Utensils	0.3212	234.34	233.80	223.08	+	0.23	+ 5.05
63 Plastic Products	0.2547	213.05	211.37	207.17	+	0.79	+ 2.84
64 Washing Soaps & Detergents	0.7893	232.92	232.80	228.76	+	0.05	+ 1.82
65 Sewing Needle & Dr Cell	0.1496	209.49	207.74	206.32	+	0.84	+ 1.54
66 Household Servant	1.0432	257.30	254.90	249.98	+	0.94	+ 2.93
67 Marriage Hall Charges	0.0762	249.20	249.20	242.89	+	0.00	+ 2.60
<u>Health</u>	2.1868	213.90	213.05	192.00	+	0.40	+ 11.41
68 Drugs & Medicines	1.2667	185.75	185.27	159.00	+	0.26	+ 16.82
69 Medical Equipments	0.0080	253.35	251.81	242.29	+	0.61	+ 4.56
70 Doctor (MBBS) Clinic Fee	0.5904	282.22	280.95	264.28	+	0.45	+ 6.79
71 Medical Tests	0.3217	198.38	196.81	188.05	+	0.80	+ 5.49
<u>Transport</u>	7.2023	175.74	174.61	170.31	+	0.65	+ 3.19
72 Motor Vehicles	0.6630	176.88	176.59	171.00	+	0.16	+ 3.44
73 Motor Vehicle Accessories	0.2439	213.57	211.91	213.67	+	0.78	- 0.05
74 Motor Fuel	3.0269	146.77	144.27	136.01	+	1.73	+ 7.91
75 Mechanical Service	0.4552	232.07	232.07	227.40	+	0.00	+ 2.05
76 Motor Vehicle Tax	0.1099	210.18	210.18	210.18	+	0.00	+ 0.00
77 Transport Services	2.7034	193.59	193.59	193.40	+	0.00	+ 0.10
<u>Communication</u>	3.2198	133.04	133.03	130.88	+	0.01	+ 1.65
78 Postal Services	0.0662	250.69	250.44	242.74	+	0.10	+ 3.28
79 Communication & Apparatus	3.1536	130.57	130.56	128.53	+	0.01	+ 1.59
<u>Recreation and culture</u>	2.0227	196.78	196.33	196.15	+	0.23	+ 0.32
80 Recreation & Culture	0.8634	129.49	129.38	129.68	+	0.09	- 0.15
81 Text Books	0.5706	287.98	287.98	292.41	+	0.00	- 1.51
82 Newspapers	0.1934	183.76	182.90	175.49	+	0.47	+ 4.71
83 Stationery	0.3953	218.46	216.82	212.50	+	0.76	+ 2.80
<u>Education</u>	3.9431	249.61	249.61	230.54	+	0.00	+ 8.27
84 Education	3.9431	249.61	249.61	230.54	+	0.00	+ 8.27
<u>Restaurants and hotels</u>	1.2286	281.08	278.44	266.11	+	0.95	+ 5.63
85 Readymade Food	1.2286	281.08	278.44	266.11	+	0.95	+ 5.63
<u>Misc. goods and services</u>	2.7550	250.12	248.46	236.99	+	0.67	+ 5.54
86 Personal Care	1.4935	230.31	229.77	217.90	+	0.24	+ 5.70
87 Cosmetics	0.3853	205.83	205.72	199.36	+	0.05	+ 3.25
88 Blades	0.0322	197.94	197.80	195.16	+	0.07	+ 1.42
89 Personal Equipments	0.8440	307.37	302.99	289.57	+	1.45	+ 6.15

Annexure B: Wholesale Price Indices by Major Groups & Commodities (2007-08=100)

Item and Specification	Weight	Index Numbers			% Change in Sep 2017 over			
		Sep 17	Aug 17	Sep 16	Aug 2017	Sep 2016		
General	100.0000	218.08	217.96	214.61	+	0.06	+	1.62
Agriculture Forestry & Fisher	25.7674	252.05	250.96	246.87	+	0.43	+	2.10
001 Wheat	0.6297	196.01	194.17	205.26	+	0.95	-	4.51
002 Maize	0.6764	191.42	189.41	196.67	+	1.06	-	2.67
003 Rice	2.4413	168.67	168.81	149.55	-	0.08	+	12.79
004 Sorghum / Jowar	0.0214	211.96	209.74	264.05	+	1.06	-	19.73
005 Millet / Bajra	0.0374	160.05	157.16	210.05	+	1.84	-	23.80
006 Vegetables	1.2441	400.21	296.47	354.30	+	34.99	+	12.96
007 Fresh Fruits	1.5144	253.92	284.12	248.15	-	10.63	+	2.33
008 Dry Fruits	0.2478	235.18	233.30	241.88	+	0.81	-	2.77
009 Cotton Seeds	1.1511	260.12	278.51	260.92	-	6.60	-	0.31
010 Other Oil Seeds	0.0722	185.96	182.82	170.86	+	1.72	+	8.84
011 Edible Roots / Potatoes	0.2540	271.48	256.16	256.45	+	5.98	+	5.86
012 Stimulant & Spice Crops	0.1634	294.09	269.90	260.56	+	8.96	+	12.87
013 Pulses	0.4901	263.85	263.31	304.53	+	0.21	-	13.36
014 Sugar Crops	1.0725	268.94	268.94	286.34	+	0.00	-	6.08
015 Fibre Crops	5.3169	199.67	204.58	195.33	-	2.40	+	2.22
016 Unmanufactured Tobacco	0.0742	293.30	290.62	255.73	+	0.92	+	14.69
017 Poultry	0.5633	226.19	190.18	160.06	+	18.93	+	41.32
018 Raw Milk from Bovine Animals	7.0279	269.94	269.94	262.97	+	0.00	+	2.65
019 Eggs	0.5034	204.41	199.48	211.44	+	2.47	-	3.32
020 Raw Animal Materials / Wool	0.0351	172.91	172.91	173.89	+	0.00	-	0.56
021 Hides & Fur Skins, Raw	0.4834	98.57	100.98	142.47	-	2.39	-	30.81
022 Fuel Wood in Logs	0.0179	279.63	279.63	264.77	+	0.00	+	5.61
023 Fish Live Fresh or Chilled	1.7295	440.36	463.98	453.85	-	5.09	-	2.97
Ores/Minerals, Elec., Gas & W	12.0389	242.68	242.53	241.64	+	0.06	+	0.43
024 Coal not Agglomerated	0.7508	155.29	155.29	152.94	+	0.00	+	1.54
025 Natural Gas Liquefied	5.7385	210.69	210.37	208.75	+	0.15	+	0.93
026 Salt & Pure Sodium Chloride	0.0584	248.46	248.46	254.33	+	0.00	-	2.31
027 Electrical Energy	5.4912	288.00	288.00	288.00	+	0.00	+	0.00
Food, Beverages, Tobacco, Textil	31.1122	225.30	226.39	225.26	-	0.48	+	0.02
Food Products, Beverages &	20.0718	235.42	236.86	238.26	-	0.61	-	1.19
028 Meat of Animals	3.4559	304.31	303.71	279.82	+	0.20	+	8.75
029 Vegetables & Fruit Juice	0.0058	224.22	223.38	209.83	+	0.38	+	6.86
030 Dried Fruits & Nuts	0.1733	268.09	263.87	238.61	+	1.60	+	12.35
031 Fruit Juices	0.3880	182.36	182.38	183.49	-	0.01	-	0.62
032 Vegetable Oils Refined	1.9242	154.86	155.87	151.63	-	0.65	+	2.13
033 Vegetable Ghee	1.5632	125.89	126.04	123.32	-	0.12	+	2.08
034 Oil Cakes	0.9611	218.98	228.42	231.01	-	4.13	-	5.21
035 Processed Liquid Milk	4.4437	282.01	282.01	257.57	+	0.00	+	9.49
036 Milk & Cream in Solid Form	0.0316	224.00	222.44	221.24	+	0.70	+	1.25
037 Ice Cream	0.0047	266.02	266.02	238.04	+	0.00	+	11.75
038 Dairy Products N.E.C	0.0117	268.85	268.85	248.76	+	0.00	+	8.08
039 Wheat Flour	2.3034	187.13	186.18	192.40	+	0.51	-	2.74
040 Other Cereal Flour	0.0604	227.95	226.59	299.87	+	0.60	-	23.98
041 Sugar Refined	1.7975	209.70	221.26	269.18	-	5.22	-	22.10
042 Chocolate	0.0139	100.00	100.00	99.45	+	0.00	+	0.55
043 Sugar Confectionary	0.0738	128.44	128.44	118.83	+	0.00	+	8.09
044 Coffee & Tea	0.7303	255.28	258.68	230.56	-	1.31	+	10.72
045 Spices	0.1449	201.92	199.08	190.12	+	1.43	+	6.21
046 Other Food Products	0.0336	294.50	294.50	293.85	+	0.00	+	0.22
047 Mineral Water	0.0207	206.35	199.51	197.57	+	3.43	+	4.44
048 Beverages	0.6303	172.85	172.85	172.44	+	0.00	+	0.24
049 Tobacco Products	1.2998	318.37	318.37	435.03	+	0.00	-	26.82
Textiles & Apparels	10.3289	207.40	207.89	201.78	-	0.24	+	2.79
050 Cotton Yarn	5.2491	201.61	202.49	194.81	-	0.43	+	3.49
051 Nylon Yarn	0.1719	143.99	143.99	147.08	+	0.00	-	2.10
052 Blended Yarn	0.1689	183.55	183.38	179.64	+	0.09	+	2.18
053 Woven Fabrics	0.0128	316.28	316.28	279.69	+	0.00	+	13.08
054 Cotton Fabrics	0.6343	211.47	211.33	209.09	+	0.07	+	1.14
055 Other Fabrics	1.1016	227.16	227.16	224.29	+	0.00	+	1.28

Annexure B:Wholesale Price Indices by Major Groups & Commodities (2007-08=100)

Item and Specification	Weight	Index Numbers			% Change in Sep 2017 over			
		Sep 17	Aug 17	Sep 16	Aug 2017	Sep 2016		
056 Silk & Reyon Fabrics	0.7350	188.14	188.89	190.96	-	0.40	-	1.48
057 Towels	0.1235	276.14	276.14	267.20	+	0.00	+	3.35
058 Blankets	0.0029	247.52	247.52	243.93	+	0.00	+	1.47
059 Bed Sheets	0.0913	256.87	256.87	256.29	+	0.00	+	0.23
060 Quilts	0.0019	213.05	208.42	198.00	+	2.22	+	7.60
061 Woolen Carpets	0.0383	196.43	196.43	196.43	+	0.00	+	0.00
062 Synthetic Carpets	0.0566	130.95	130.95	129.25	+	0.00	+	1.32
063 Hosiery Products	0.8832	243.31	243.31	224.11	+	0.00	+	8.57
064 Readymade Garments	1.0576	201.37	201.37	200.55	+	0.00	+	0.41
Leather Products	0.7115	199.75	199.75	199.41	+	0.00	+	0.17
065 Leather Without Hair	0.2973	221.97	221.97	221.97	+	0.00	+	0.00
066 Other Leather N.E.C	0.2567	207.31	207.31	207.31	+	0.00	+	0.00
067 Footwears	0.1575	145.51	145.51	143.97	+	0.00	+	1.07
Other Transportable Goods	22.3659	171.64	170.93	164.47	+	0.42	+	4.36
068 Timber	0.0165	231.53	231.53	220.36	+	0.00	+	5.07
069 Printing Paper	0.4279	166.60	166.40	164.90	+	0.12	+	1.03
070 Hard Board	0.1579	225.00	225.00	197.92	+	0.00	+	13.68
071 Coke	0.2797	163.45	163.45	163.45	+	0.00	+	0.00
072 Motor Spirit	1.5336	120.76	117.38	108.54	+	2.88	+	11.26
073 Diesel Oil	5.2664	150.68	150.68	144.34	+	0.00	+	4.39
074 Kerosine Oil	0.2151	117.12	117.12	115.11	+	0.00	+	1.75
075 Furnace Oil	3.2664	103.94	101.72	80.68	+	2.18	+	28.83
076 Mobil Oil	0.7114	201.29	201.29	196.00	+	0.00	+	2.70
077 Chemicals	1.7720	180.05	180.49	177.38	-	0.24	+	1.51
078 Dyeing Material	0.1539	146.55	146.55	146.55	+	0.00	+	0.00
079 Fertilizers	2.8657	216.26	215.94	224.61	+	0.15	-	3.72
080 Pesticides	0.2763	306.92	306.06	308.79	+	0.28	-	0.61
081 Insecticides	0.1276	141.98	142.41	135.58	-	0.30	+	4.72
082 Paints & Varnishes	0.1916	298.67	294.56	295.36	+	1.40	+	1.12
083 Medicines	1.1428	176.72	174.94	168.09	+	1.02	+	5.13
084 Soaps & Detergents	0.8168	191.45	191.20	186.25	+	0.13	+	2.79
085 Auto Tyres	0.2703	177.07	177.07	181.25	+	0.00	-	2.31
086 Plastic Products	0.4550	225.88	225.88	228.35	+	0.00	-	1.08
087 Glass sheets	0.2089	298.97	298.97	247.94	+	0.00	+	20.58
088 Other Glass Articles	0.1635	317.24	317.24	299.07	+	0.00	+	6.08
089 Ceramics & Sanitary Fixture	0.0244	232.65	232.65	233.48	+	0.00	-	0.36
090 Bricks, Blocks & Tiles	0.1566	221.69	221.50	218.21	+	0.09	+	1.59
091 Cement	1.8145	221.52	221.52	213.44	+	0.00	+	3.79
092 Bed Foam	0.0006	170.33	170.33	160.50	+	0.00	+	6.12
093 Matches	0.0505	171.36	171.36	162.62	+	0.00	+	5.37
Metal Product, Machinery & Eq	8.7156	177.12	177.02	172.51	+	0.06	+	2.67
094 Pig Iron	0.0593	128.97	128.97	128.97	+	0.00	+	0.00
095 Steel Bar & Sheets	1.4022	138.84	138.48	120.46	+	0.26	+	15.26
096 Pipe Fittings	0.0780	215.66	215.66	193.63	+	0.00	+	11.38
097 Steel Products	0.3879	177.56	177.56	176.99	+	0.00	+	0.32
098 Engines & Motors	0.0046	116.98	116.98	109.24	+	0.00	+	7.09
099 Vacuum Pumps	0.0155	123.69	123.69	114.95	+	0.00	+	7.60
100 Air Conditioners	0.0049	200.10	200.10	201.18	+	0.00	-	0.54
101 Cultivators	0.0551	190.66	190.66	219.76	+	0.00	-	13.24
102 Chuff Cutter	0.1293	153.46	153.46	149.20	+	0.00	+	2.86
103 Tractors	0.0028	201.75	201.75	203.68	+	0.00	-	0.95
104 Lathe Machines	0.0525	241.06	241.06	221.65	+	0.00	+	8.76
105 Concrete Mixture	0.0107	138.83	138.83	138.83	+	0.00	+	0.00
106 Fridge,WashM,SewM,Fans,Iron	1.1645	214.97	214.97	204.03	+	0.00	+	5.36
107 Electric Wires	0.0912	205.92	205.92	195.19	+	0.00	+	5.50
108 Lighting Equipments	1.4431	170.98	170.73	172.03	+	0.15	-	0.61
109 Radio & Television	0.1843	140.42	140.42	140.42	+	0.00	+	0.00
110 Motor Vehicles	0.0244	195.36	195.36	191.39	+	0.00	+	2.07
111 Motorcycles	0.2570	125.89	125.89	125.89	+	0.00	+	0.00
112 Bicycles	3.3483	187.65	187.65	187.65	+	0.00	+	0.00