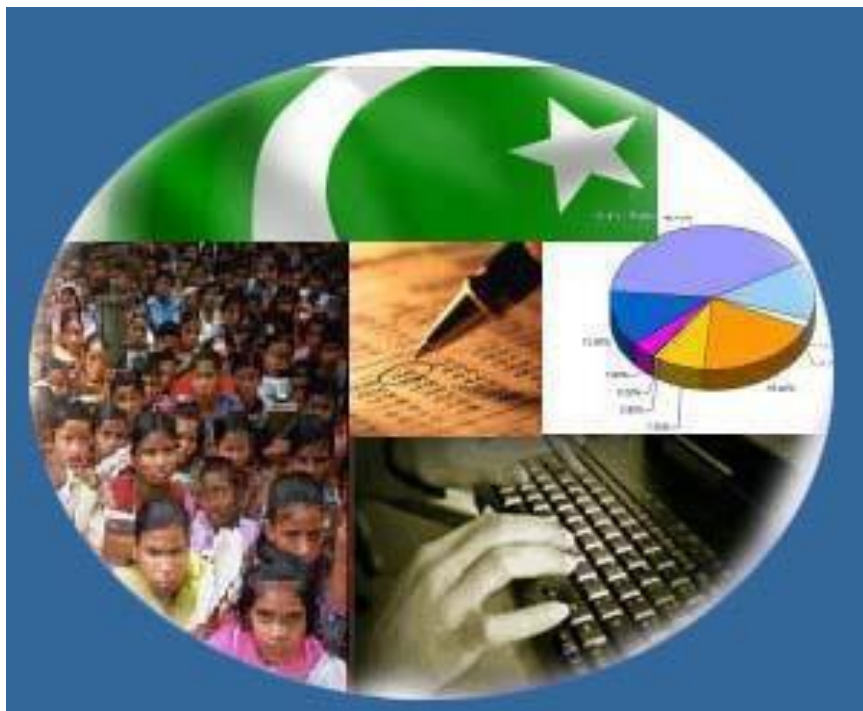




Monthly Review on Price Indices



November, 2017
(Base 2007-08)

Government of Pakistan
Ministry Of Statistics
Pakistan Bureau of Statistics
Islamabad

Inflation in Brief

1. CPI inflation General increased by 4.0% on year-on-year basis in November 2017 as compared to an increase of 3.8% in the previous month and 3.8% in November 2016. On month-on-month basis, it increased by 0.4% in November 2017 as compared to an increase of 0.7% in the previous month and increase of 0.2% in November 2016.
2. Core inflation measured by non-food non-energy CPI (Core NFNE) increased by 5.5% on (YoY) basis in November 2017 as compared to an increase of 5.3% in the previous month and 5.3% in November 2016. On (MoM) basis, it increased by 0.3% in November 2017 as compared to increase of 0.9% in previous month, and an increase of 0.2% in corresponding month of last year i.e. November 2016.
3. Core inflation, measured by 20% weighted trimmed mean CPI (Core Trimmed) increased by 4.2% on (YoY) basis in November 2017 as compared to 4.0% in the previous month and by 3.8% in November 2016. On (MoM) basis, it increased by 0.3% in November 2017 as compared to an increase of 0.6% in the previous month and an increase of 0.2% in corresponding month of last year i.e. November 2016.
4. SPI inflation on YoY increased by 2.1% in November 2017 as compared to an increase of 2.1% a month earlier and an increase of 0.6% in November 2016. On MoM basis, it increased by 0.3% in November 2017 as compared to an increase of 0.9% a month earlier and an increase of 0.3% in November 2016.
5. WPI inflation on YoY basis increased by 2.9% in November 2017 as compared to an increase of 2.3% a month earlier and an increase of 2.6% in November 2016. WPI inflation on MoM basis increased by 0.4% in November 2017 as compared to an increase of 0.6% a month earlier and decrease of 0.2% in corresponding month of last year i.e. November 2016.
6. Figures 1 and 2 show graphically the data of Table 1. Table 1.1 shows "Period Average" and "YoY" percent changes in indices of three years.

Table 1: Inflation (%) (Base 2007-08)

Period	CPI						Core Inflation				SPI**		WPI	
	General		Food		Non-food		NFNE*		Trimmed		YoY	MoM	YoY	MoM
	YoY	MoM	YoY	MoM	YoY	MoM	YoY	MoM	YoY	MoM				
Oct-16	4.2	0.8	4.4	0.8	4.1	0.8	5.2	0.9	3.8	0.6	1.3	0.7	2.8	0.0
Nov-16	3.8	0.2	3.3	0.2	4.1	0.2	5.3	0.2	3.8	0.2	0.6	0.3	2.6	-0.2
Dec-16	3.7	-0.7	3.0	-1.9	4.2	0.2	5.2	0.1	3.7	0.1	0.5	-0.8	3.1	-0.1
Jan-17	3.7	0.2	2.6	-1.0	4.4	1.0	5.4	1.1	3.8	0.6	0.4	-0.8	4.2	0.5
Feb-17	4.2	0.3	3.7	0.3	4.6	0.3	5.3	0.2	4.1	0.2	1.1	0.2	5.3	0.5
Mar-17	4.9	0.8	5.0	1.9	4.9	0.1	5.3	0.1	4.5	0.2	3.1	1.8	6.4	0.7
Apr-17	4.8	1.4	4.4	1.7	5.1	1.2	5.5	1.3	4.8	0.8	2.3	-0.9	6.0	0.9
May-17	5.0	0.0	4.9	-0.2	5.1	0.2	5.5	0.2	4.8	0.2	2.4	-0.9	5.2	-0.2
Jun-17	3.9	-0.4	2.4	-1.1	5.0	0.1	5.5	0.1	4.2	0.0	1.4	0.1	3.3	-0.5
Jul-17	2.9	0.3	-0.1	0.0	5.1	0.5	5.6	0.7	4.0	0.4	-0.4	-0.5	0.7	-0.2
Aug-17	3.4	0.2	1.3	0.4	5.0	0.1	5.5	0.1	4.2	0.1	-0.1	0.5	1.0	0.3
Sep-17	3.9	0.6	2.4	1.3	4.9	0.2	5.4	0.1	4.10	0.1	1.9	2.1	1.6	0.1
Oct-17	3.8	0.7	2.2	0.6	4.9	0.8	5.3	0.9	4.0	0.6	2.1	0.9	2.3	0.6
Nov-17	4.0	0.4	2.4	0.4	5.1	0.4	5.5	0.3	4.2	0.3	2.1	0.3	2.9	0.4

*NFNE is non-food non-energy, ** SPI for quintile 1. Digits 0.0* are due to rounding off.

Table 1.1 : Period Average and YoY % Changes of Indices (Base 2007-08)

Index	Averages July-November % Changes			November over November % Changes		
	2017-18	2016-17	2015-16	2017	2016	2015
CPI	3.59	3.92	1.86	3.97	3.81	2.73
SPI	1.14	1.51	-0.26	2.13	0.61	2.06
WPI	1.69	3.05	-2.73	2.86	2.56	-1.67

Figure 2: CPI Inflation MoM, Special Indices

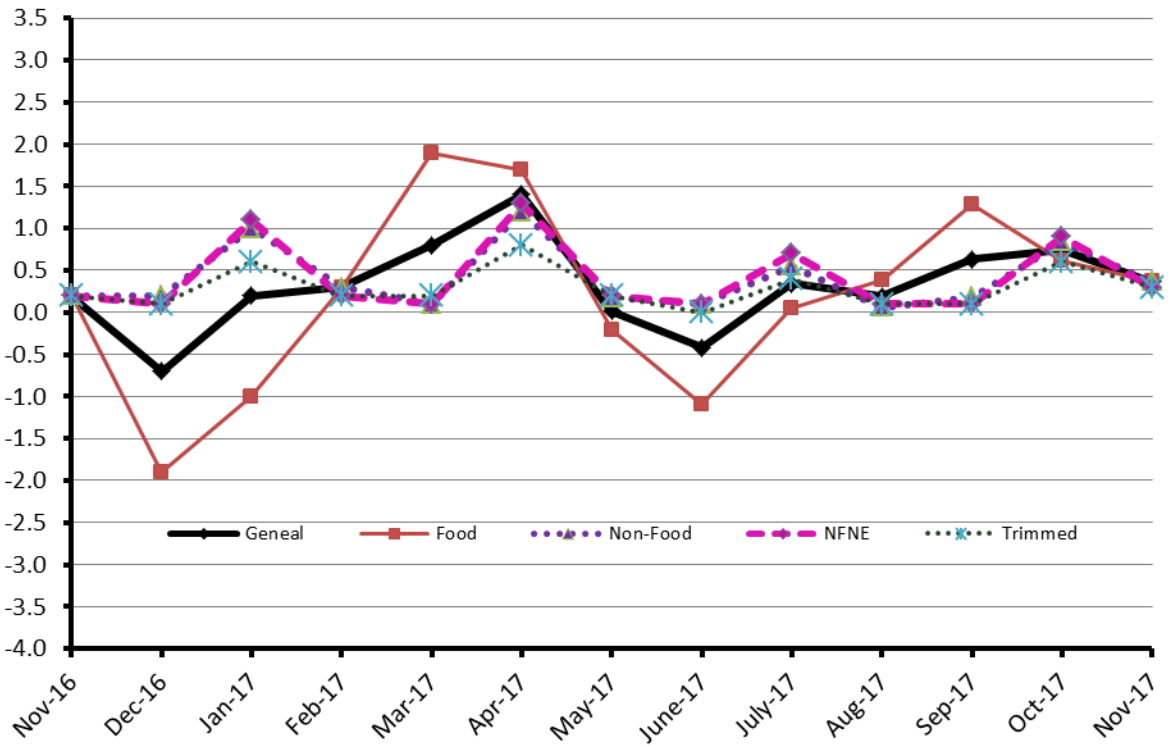
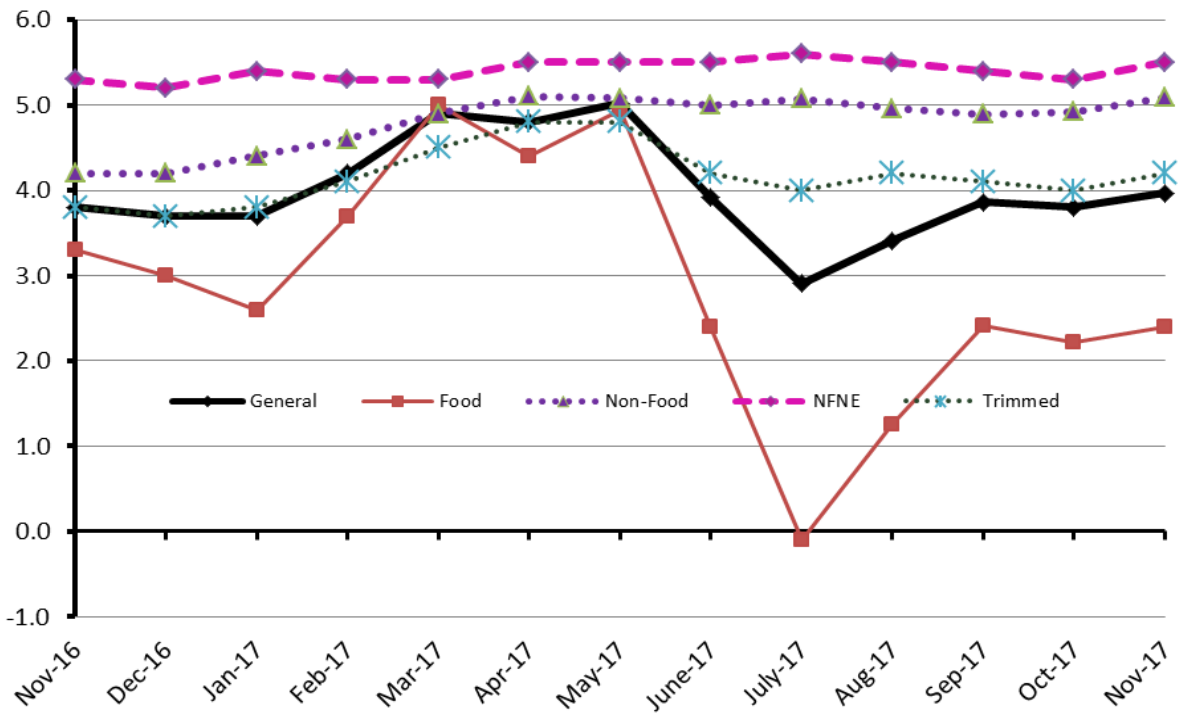


Figure 1: CPI Inflation YoY, Special Indices



II. Consumer Price Index (CPI)

The Consumer Price Index of November 2017, is increased by 0.37% over October 2017 and increased by 3.97% over corresponding month of the last year i.e. November 2016.

Table 2 : Consumer Price Index by Group of Commodities and Services (Base 2007-08)

No	Group	Group Weight (%)	Indices			% Change November 2017 Over		Impact (In % points) November 2017 Over	
			Nov 2017	Oct 2017	Nov 2016	Oct 2017	Nov 2016	Oct 2017	Nov 2016
	General	100.00	220.42	219.61	212.01	0.37	3.97	0.37	3.97
1.	Food & Non-alcoholic Bev.	34.83	236.61	235.69	228.74	0.39	3.44	0.15	1.29
	Non-perishable Food Items	29.84	227.94	226.27	226.08	0.74	0.82	0.23	0.26
	Perishable Food Items	4.99	288.45	292.08	244.63	-1.24	17.91	-0.08	1.03
2.	Alcoholic Bev. & Tobacco	1.41	305.51	305.31	365.33	0.07	-16.37	0.00	-0.40
3.	Clothing & Footwear	7.57	241.01	239.94	232.18	0.45	3.80	0.04	0.32
4.	Housing, Water, Electricity, Gas & Fuels	29.41	200.94	200.90	191.64	0.02	4.85	0.01	1.29
5.	Furnishing & Household Equipment Maintenance	4.21	230.52	229.47	223.21	0.46	3.27	0.02	0.15
6.	Health	2.19	214.79	214.27	195.28	0.24	9.99	0.01	0.20
7.	Transport	7.20	178.51	177.05	170.65	0.82	4.61	0.05	0.27
8.	Communication	3.22	133.14	133.10	131.52	0.03	1.23	0.00	0.02
9.	Recreation & Culture	2.02	197.14	196.83	196.40	0.16	0.38	0.00	0.01
10.	Education	3.94	262.35	258.75	233.40	1.39	12.40	0.06	0.54
11.	Restaurants & Hotels	1.23	284.76	283.85	267.68	0.32	6.38	0.01	0.10
12.	Miscellaneous	2.76	252.27	249.67	238.33	1.04	5.85	0.03	0.18

Main contributors to month-on-month and year-on-year percentage changes are given below and detail is given in Annexure A.

1. Month-on-month Top few commodities which varied from previous month are given below:-

Food Items Increased: Eggs (30.09%), Potatoes (5.66%), Betel Leaves & Nuts (4.75%), Tomatoes (3.61%), Wheat Flour (1.99%), Chicken (1.95%), Fish (1.64%), Wheat (1.63%), Dry Fruits (1.58%), Honey (1.39%) and Bakery & Confectionary (1.19%).

Decreased: Pulse Mash (5.26%), Fresh Fruits (4.76%), Pulse Moong (4.19%), Onion (2.81%), Pulse Masoor (2.25%), Pulse Gram (2.06%), Sugar (1.99%) and Gur (1.55%).

Non-food Items Increased: Kerosene Oil (4.71%), Motor Fuel (2.22%), Personal Equipments (2.18%), Woolen Readymade Garments (1.53%), Blades (1.52%), Education (1.39%), Medical Tests (1.19%), Furniture (1.02%) and Tailoring (0.91%).

2. Year-on-Year: Top few commodities which varied from previous year i.e. November 2016 are given below:-

Food Items Increased: Onion (187.02%), Tomatoes (107.51%), Rice (14.10%), Eggs (12.94%), Betel Leaves & Nuts (11.34%), Tea (10.73%), Meat (7.26%), Honey (7.24%), Readymade Food (6.38%) and Fresh Fruits (6.27%).

Decreased: Pulse Gram (28.40%), Pulse Mash (27.79%), Sugar (25.60%), Pulse Moong (20.28%), Pulse Masoor (20.27%), Besan (19.13%), Cigarettes (16.67%) and Chicken (11.73%).

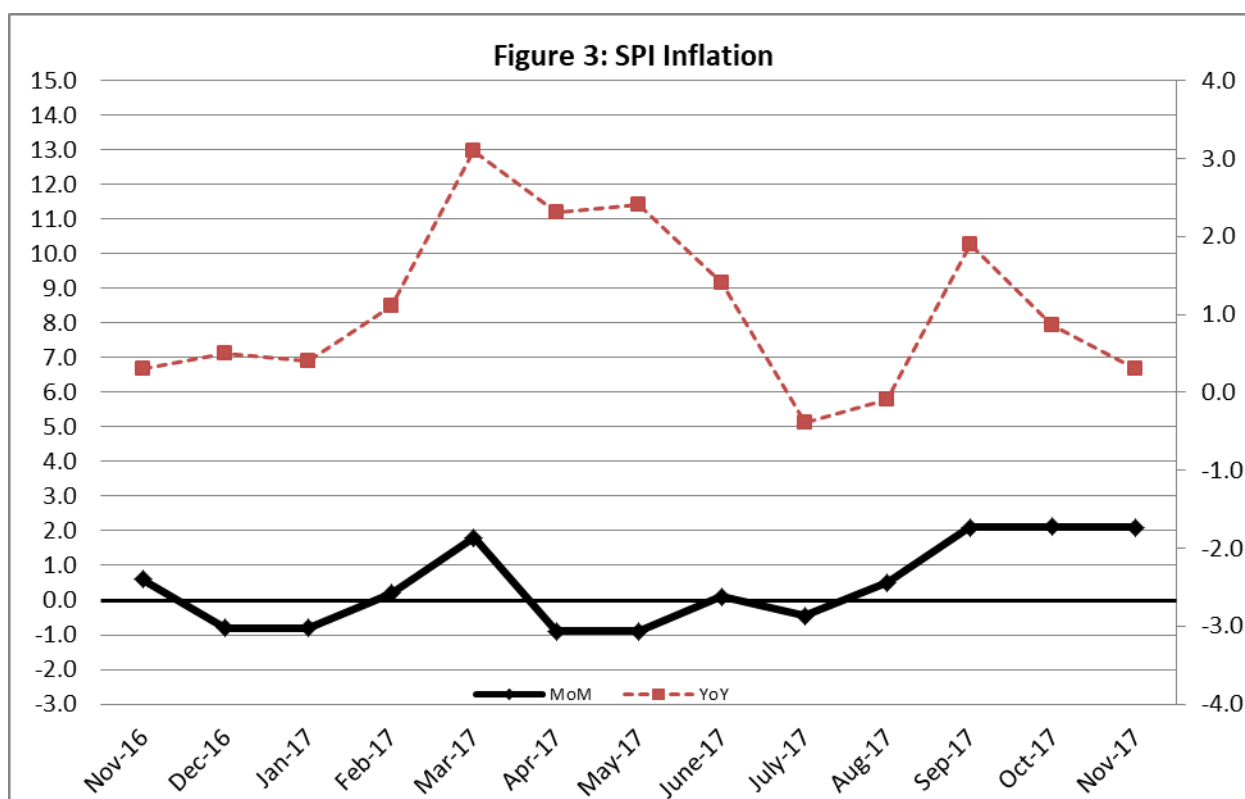
Non-food Items Increased: Drugs & Medicines (15.00%), Education (12.40%), Motor Fuel (11.81%), Kerosene Oil (10.23%), Tailoring (7.89%), Medical Tests (7.14%) Construction wage Rates (6.97%), Personal Equipments (6.77%), Cleaning and Laundry (6.58%) and House Rent (6.49%).

III. Sensitive Price Indicator

Quintile-wise percentage changes YoY and MoM are given below in Table 3. The series from November 2016 to November 2017 is also graphed below in Figure 3.

Table 3: Sensitive Price Indicator (Base 2007-08)					
Quintiles	Indices			% Change November 2017 over	
	November 2017	October 2017	November 2016	October 2017	November 2016
1	216.93	216.20	212.40	0.34	2.13
2	224.40	223.62	219.58	0.35	2.20
3	225.65	224.77	220.41	0.39	2.38
4	229.75	228.71	224.77	0.45	2.22
5	226.63	225.15	220.95	0.66	2.57
Combined	226.29	225.15	220.68	0.51	2.54

Table 3.1 : Weekly Percentage Change of SPI During September-17					
Quintiles	% Change with Previous week				
	2 nd Nov-2017	9 th Nov-2017	16 th Nov-2017	23 rd Nov-2017	29 th Nov-2017
Quantile 1	0.93	0.13	-1.08	-0.44	0.44
Combined	0.97	0.12	-0.88	-0.31	0.04



IV. Wholesale Price Index

The Wholesale Price Index for November, 2017 increased by 0.36% over October, 2017. It increased by 2.86% over the corresponding month of the last year. YoY and MoM movements, from November, 2016 to November, 2017 are also graphed below in Figure 4.

Table 4 : Wholesale Price Index by Group of Commodities (Base 2007-08)

No.	Group	Group Weight (%)	Indices			% Change November, 2017 over		Impact (in %age points) November, 2017 over	
			Nov. 2017	Oct. 2017	Nov. 2016	Oct. 2017	Nov. 2016	Oct. 2017	Nov. 2016
	General	100.00	220.20	219.41	214.07	0.36	2.86	0.36	2.86
1.	Agriculture, Forestry & Fishery Products	25.77	252.96	254.45	242.47	-0.59	4.33	-0.17	1.26
2.	Ores & Minerals, Electricity, Gas & Water	12.04	243.05	242.97	242.44	0.03	0.25	0.00	0.03
3.	Food Products, Beverages & Tobacco, Textiles, Apparel & Leather Products	31.11	227.21	226.01	225.93	0.53	0.57	0.17	0.19
	i. Food Products, Bev. & Tobacco	20.07	237.59	236.32	239.18	0.54	-0.66	0.12	-0.15
	ii. Textiles and Apparel	10.33	209.22	207.78	201.76	0.69	3.70	0.07	0.36
	iii. Leather Products	0.71	195.77	199.75	202.86	-1.99	-3.50	-0.01	-0.02
4.	Other Transportable Goods except Metal Products, Machinery & Equipment	22.37	176.98	173.59	165.19	1.95	7.14	0.35	1.23
5.	Metal Products, Machinery & Equipment	8.72	177.63	177.34	174.10	0.16	2.03	0.01	0.14

Main contributors to month-on-month and year-on-year percentage changes are given below and detail is given in Annexure B.

- Month-on-month** Top few commodities which varied from previous month i.e. October, 2017 are given below:-

Increased: Eggs (35.64%), Kerosene Oil (10.85%), Diesel (6.54%), Bajra (5.68%), Fibre Crops (5.22%), Dried Fruits & Nuts (4.49%), Blankets (4.26%), Petrol (3.39%), Wheat (2.94%), Oil Cakes (2.92%), Wheat Flour (2.83%), Other Oil Seeds (2.27%), Dry Fruits (2.04%), Fertilizers (1.62%), Fish (1.58%), Potatoes (1.57%), Chemicals (1.56%), Cotton Yarn (1.37%), Furnace Oil (1.28%), Blended Yarn (1.25%), Glass Sheets (1.10%) and Maize (1.02%).

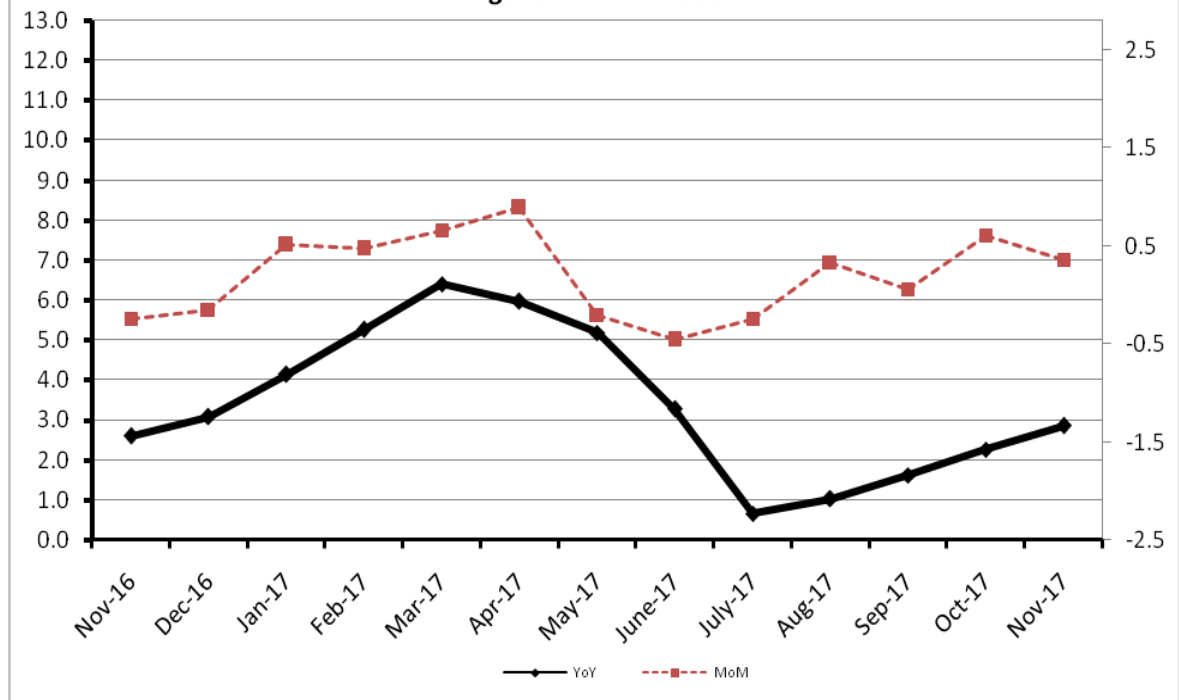
Decreased: Fresh Fruits (15.99%), Poultry (11.76%), Vegetables (11.36%), Leather without Hair (4.19%), Stimulant & Spice Crops (3.83%), Cotton Seeds (2.54%), Cement (2.05%), Rice (1.52%), Steel Products (1.51%) and Pulses (1.99%).

- Year-on-year** Top few commodities which varied from previous year i.e. November, 2016 are given below:-

Increased: Stimulant & Spice Crops (29.66%), Vegetables (29.61%), Kerosene Oil (23.06%), Furnace Oil (21.48%), Petrol (18.25%), Diesel (15.04%), Eggs (14.77%), Hard Board (13.68%), Dried Fruits & Nuts (12.42%), Rice (12.37%) and Unmanufactured Tobacco (11.76%).

Decreased: Other Cereal Flour (30.99%), Tobacco Products (26.82%), Sugar (25.74%), Pulses (16.61%) Hides & Fur Skins (15.52%), Poultry (11.68%) and Jowar (10.81%).

Figure 4: WPI Inflation



Annexure A:CPI by Commodity Groups and Commodities (2007-08=100)

Item and Specification	Weight	Index Numbers			% Change in Nov 2017 over			
		Nov 2017	Oct 2017	Nov 2016	Oct 2017	Nov 2016		
<i>General</i>	100.0000	220.42	219.61	212.01	+	0.37	+	3.97
<i>Food and non-alcoholic Beverages</i>	34.8343	236.61	235.69	228.74	+	0.39	+	3.44
1 Wheat	0.3477	200.97	197.74	203.78	+	1.63	-	1.38
2 Wheat Flour	4.1648	211.55	207.43	212.30	+	1.99	-	0.35
3 Wheat Product	0.0959	213.19	213.11	217.35	+	0.04	-	1.91
4 Besan	0.1500	280.28	280.66	346.57	-	0.14	-	19.13
5 Rice	1.5821	182.82	182.85	160.23	-	0.02	+	14.10
6 Cereals	0.1563	257.56	257.39	251.74	+	0.07	+	2.31
7 Bakery & Confectionary	1.1550	221.90	219.29	216.46	+	1.19	+	2.51
8 Nimco	0.4574	256.90	256.68	250.65	+	0.09	+	2.49
9 Meat	2.4303	285.83	284.72	266.48	+	0.39	+	7.26
10 Chicken	1.3596	154.15	151.20	174.63	+	1.95	-	11.73
11 Fish	0.2970	217.74	214.23	215.91	+	1.64	+	0.85
12 Milk Fresh	6.6800	277.08	277.04	267.15	+	0.01	+	3.72
13 Milk Products	0.6338	268.37	268.10	257.33	+	0.10	+	4.29
14 Milk Powder	0.1129	236.83	235.75	237.27	+	0.46	-	0.19
15 Eggs	0.4555	273.24	209.55	241.93	+	30.39	+	12.94
16 Mustard Oil	0.0952	161.96	161.44	155.96	+	0.32	+	3.85
17 Cooking Oil	1.7538	138.58	138.35	134.00	+	0.17	+	3.42
18 Vegetable Ghee	2.0714	143.68	143.26	138.42	+	0.29	+	3.80
19 Dry Fruits	0.2543	269.66	265.47	265.00	+	1.58	+	1.76
20 Fresh Fruits	1.8649	224.34	235.56	211.10	-	4.76	+	6.27
21 Pulse Masoor	0.2712	168.46	172.34	211.28	-	2.25	-	20.27
22 Pulse Moong	0.2336	222.21	231.93	278.74	-	4.19	-	20.28
23 Pulse Mash (Washed)	0.2098	242.09	255.52	335.28	-	5.26	-	27.79
24 Pulse Gram	0.2361	269.96	275.63	377.06	-	2.06	-	28.40
25 Gram Whole	0.1616	296.37	297.03	313.13	-	0.22	-	5.35
26 Beans	0.0269	242.81	244.14	231.13	-	0.54	+	5.05
27 Potatoes	0.4598	289.11	273.63	295.55	+	5.66	-	2.18
28 Onion	0.5239	478.11	491.92	166.58	-	2.81	+	187.02
29 Tomatoes	0.4318	349.90	337.71	168.62	+	3.61	+	107.51
30 Fresh Vegetables	1.7105	287.30	287.98	307.50	-	0.24	-	6.57
31 Sugar	1.0445	193.86	197.79	260.56	-	1.99	-	25.60
32 Gur	0.0220	259.06	263.15	281.47	-	1.55	-	7.96
33 Honey	0.0446	338.91	334.28	316.04	+	1.39	+	7.24
34 SweetMeat	0.2483	254.71	253.94	245.39	+	0.30	+	3.80
35 Beverages	1.1990	226.48	226.52	219.50	-	0.02	+	3.18
36 Jam, Tomato Ketchup & Pickles	0.2454	223.06	221.97	216.26	+	0.49	+	3.14
37 Condiments	0.2656	273.73	273.37	265.31	+	0.13	+	3.17
38 Spices	0.5441	239.01	239.11	239.32	-	0.04	-	0.13
39 Tea	0.8377	283.98	283.79	256.46	+	0.07	+	10.73
<i>Alcoholic Beverages, Tobacco</i>	1.4135	305.51	305.31	365.33	+	0.07	-	16.37
40 Cigarettes	1.3906	306.09	306.09	367.34	+	0.00	-	16.67
41 Betel Leaves & Nuts	0.0229	270.67	258.40	243.10	+	4.75	+	11.34
<i>Clothing and footwear</i>	7.5708	241.01	239.94	232.18	+	0.45	+	3.80
42 Cotton Cloth	1.7286	234.28	233.43	225.35	+	0.36	+	3.96
43 Woolen Cloth	0.8759	259.17	258.28	250.42	+	0.34	+	3.49
44 Readymade Garments	0.9739	248.53	248.07	238.62	+	0.19	+	4.15
45 Woolen Readymade Garments	0.3964	263.43	259.47	260.39	+	1.53	+	1.17
46 Hosiery	0.5094	252.67	252.12	244.86	+	0.22	+	3.19

Annexure A:CPI by Commodity Groups and Commodities (2007-08=100)

Item and Specification	Weight	Index Numbers			% Change in Nov 2017 over		
		Nov 2017	Oct 2017	Nov 2016	Oct 2017	Nov 2016	
47 Dopatta	0.4412	248.38	246.72	241.74	+	0.67	+ 2.75
48 Cleaning and Laundry	0.2110	273.92	272.90	257.02	+	0.37	+ 6.58
49 Tailoring	0.8840	328.50	325.55	304.47	+	0.91	+ 7.89
50 Footwear	1.5504	167.51	167.50	166.74	+	0.01	+ 0.46
<u>Housing, water, Elec., Gas and other fuels</u>	29.4149	200.94	200.90	191.64	+	0.02	+ 4.85
51 House Rent	21.8149	194.05	194.05	182.22	+	0.00	+ 6.49
52 Construction Input Items	0.5623	257.16	257.07	248.60	+	0.04	+ 3.44
53 Construction Wage Rates	0.3331	248.82	246.85	232.60	+	0.80	+ 6.97
54 Water Supply	0.4971	171.58	171.58	164.74	+	0.00	+ 4.15
55 Electricity	4.3985	238.10	238.10	238.10	+	0.00	+ 0.00
56 Gas	1.5756	158.08	158.08	158.08	+	0.00	+ 0.00
57 Kerosene Oil	0.0057	215.98	206.26	195.93	+	4.71	+ 10.23
58 Firewood Whole	0.2277	295.15	293.20	286.97	+	0.67	+ 2.85
<u>Furnishing and household equipment</u>	4.2082	230.52	229.47	223.21	+	0.46	+ 3.27
59 Furniture	0.3315	223.87	221.60	214.48	+	1.02	+ 4.38
60 Household Textiles	0.6489	233.22	232.05	224.66	+	0.50	+ 3.81
61 Household Equipment	0.5936	183.57	183.44	179.18	+	0.07	+ 2.45
62 Utensils	0.3212	236.75	235.07	225.32	+	0.71	+ 5.07
63 Plastic Products	0.2547	215.02	213.86	207.64	+	0.54	+ 3.55
64 Washing Soaps & Detergents	0.7893	233.40	233.12	229.75	+	0.12	+ 1.59
65 Sewing Needle & Dr Cell	0.1496	209.80	209.49	201.34	+	0.15	+ 4.20
66 Household Servant	1.0432	258.89	257.30	249.98	+	0.62	+ 3.56
67 Marriage Hall Charges	0.0762	249.98	249.20	243.87	+	0.31	+ 2.51
<u>Health</u>	2.1868	214.79	214.27	195.28	+	0.24	+ 9.99
68 Drugs & Medicines	1.2667	186.14	185.84	161.86	+	0.16	+ 15.00
69 Medical Equipments	0.0080	253.69	253.63	246.00	+	0.02	+ 3.13
70 Doctor (MBBS) Clinic Fee	0.5904	282.22	282.22	269.50	+	0.00	+ 4.72
71 Medical Tests	0.3217	202.91	200.53	189.39	+	1.19	+ 7.14
<u>Transport</u>	7.2023	178.51	177.05	170.65	+	0.82	+ 4.61
72 Motor Vehicles	0.6630	177.84	177.56	171.44	+	0.16	+ 3.73
73 Motor Vehicle Accessories	0.2439	214.98	214.38	213.96	+	0.28	+ 0.48
74 Motor Fuel	3.0269	152.90	149.58	136.75	+	2.22	+ 11.81
75 Mechanical Service	0.4552	233.00	232.74	227.84	+	0.11	+ 2.26
76 Motor Vehicle Tax	0.1099	210.18	210.18	210.18	+	0.00	+ 0.00
77 Transport Services	2.7034	193.59	193.59	193.28	+	0.00	+ 0.16
<u>Communication</u>	3.2198	133.14	133.10	131.52	+	0.03	+ 1.23
78 Postal Services	0.0662	253.38	251.59	244.70	+	0.71	+ 3.55
79 Communication & Apparatus	3.1536	130.62	130.61	129.15	+	0.01	+ 1.14
<u>Recreation and culture</u>	2.0227	197.14	196.83	196.40	+	0.16	+ 0.38
80 Recreation & Culture	0.8634	130.03	129.49	129.92	+	0.42	+ 0.08
81 Text Books	0.5706	287.98	287.98	292.41	+	0.00	- 1.51
82 Newspapers	0.1934	184.40	184.01	175.49	+	0.21	+ 5.08
83 Stationery	0.3953	218.82	218.60	213.25	+	0.10	+ 2.61
<u>Education</u>	3.9431	262.35	258.75	233.40	+	1.39	+ 12.40
84 Education	3.9431	262.35	258.75	233.40	+	1.39	+ 12.40
<u>Restaurants and hotels</u>	1.2286	284.76	283.85	267.68	+	0.32	+ 6.38
85 Readymade Food	1.2286	284.76	283.85	267.68	+	0.32	+ 6.38
<u>Misc. goods and services</u>	2.7550	252.27	249.67	238.33	+	1.04	+ 5.85
86 Personal Care	1.4935	231.98	231.11	218.97	+	0.38	+ 5.94
87 Cosmetics	0.3853	206.64	206.22	201.04	+	0.20	+ 2.79
88 Blades	0.0322	200.95	197.94	195.66	+	1.52	+ 2.70
89 Personal Equipments	0.8440	310.95	304.32	291.24	+	2.18	+ 6.77

Annexure B: Wholesale Price Indices by Major Groups & Commodities

(2007-08=100)

Item and Specification	Weight	Index Numbers			% Change in Nov 2017 over			
		Nov 17	Oct 17 16	Nov	Oct 2017	Nov 2016		
General	100.0000	220.20	219.41	214.07	+	0.36	+	2.86
Agriculture Forestry & Fisher	25.7674	252.96	254.45	242.47	-	0.59	+	4.33
001 Wheat	0.6297	205.94	200.05	211.20	+	2.94	-	2.49
002 Maize	0.6764	192.98	191.03	191.32	+	1.02	+	0.87
003 Rice	2.4413	167.04	169.62	148.65	-	1.52	+	12.37
004 Sorghum / Jowar	0.0214	216.66	216.04	242.91	+	0.29	-	10.81
005 Millet / Bajra	0.0374	169.49	160.38	171.85	+	5.68	-	1.37
006 Vegetables	1.2441	382.44	431.44	295.08	-	11.36	+	29.61
007 Fresh Fruits	1.5144	215.99	257.11	202.51	-	15.99	+	6.66
008 Dry Fruits	0.2478	248.97	243.99	244.77	+	2.04	+	1.72
009 Cotton Seeds	1.1511	254.01	260.64	260.78	-	2.54	-	2.60
010 Other Oil Seeds	0.0722	194.39	190.07	177.55	+	2.27	+	9.48
011 Edible Roots / Potatoes	0.2540	271.08	266.89	281.67	+	1.57	-	3.76
012 Stimulant & Spice Crops	0.1634	281.17	292.37	216.85	-	3.83	+	29.66
013 Pulses	0.4901	260.73	263.60	312.67	-	1.09	-	16.61
014 Sugar Crops	1.0725	268.94	268.94	266.42	+	0.00	+	0.95
015 Fibre Crops	5.3169	208.95	198.59	197.33	+	5.22	+	5.89
016 Unmanufactured Tobacco	0.0742	297.10	296.90	265.84	+	0.07	+	11.76
017 Poultry	0.5633	157.76	178.79	178.62	-	11.76	-	11.68
018 Raw Milk from Bovine Animals	7.0279	272.70	272.70	267.02	+	0.00	+	2.13
019 Eggs	0.5034	288.96	213.03	251.78	+	35.64	+	14.77
020 Raw Animal Materials / Wool	0.0351	173.53	173.18	173.89	+	0.20	-	0.21
021 Hides & Fur Skins, Raw	0.4834	103.77	103.25	122.98	+	0.50	-	15.62
022 Fuel Wood in Logs	0.0179	282.69	282.69	269.14	+	0.00	+	5.03
023 Fish Live Fresh or Chilled	1.7295	457.89	450.77	447.65	+	1.58	+	2.29
Ores/Minerals, Elec., Gas & W	12.0389	243.05	242.97	242.44	+	0.03	+	0.25
024 Coal not Agglomerated	0.7508	155.29	155.29	155.29	+	0.00	+	0.00
025 Natural Gas Liquified	5.7385	211.46	211.29	210.34	+	0.08	+	0.53
026 Salt & Pure Sodium Chloride	0.0584	248.46	248.46	231.97	+	0.00	+	7.11
027 Electrical Energy	5.4912	288.00	288.00	288.00	+	0.00	+	0.00
Food, Beverages, Tobacco, Textil	31.1122	227.21	226.01	225.93	+	0.53	+	0.57
Food Products, Beverages &	20.0718	237.59	236.32	239.18	+	0.54	-	0.66
028 Meat of Animals	3.4559	306.11	306.11	279.82	+	0.00	+	9.40
029 Vegetables & Fruit Juice	0.0058	224.22	224.22	211.47	+	0.00	+	6.03
030 Dried Fruits & Nuts	0.1733	281.80	269.70	250.67	+	4.49	+	12.42
031 Fruit Juices	0.3880	182.53	182.53	184.03	+	0.00	-	0.82
032 Vegetable Oils Refined	1.9242	154.34	155.12	151.24	-	0.50	+	2.05
033 Vegetable Ghee	1.5632	126.25	125.78	123.44	+	0.37	+	2.28
034 Oil Cakes	0.9611	228.88	222.38	227.22	+	2.92	+	0.73
035 Processed Liquid Milk	4.4437	286.83	284.79	257.57	+	0.72	+	11.36
036 Milk & Cream in Solid Form	0.0316	223.74	224.08	220.54	-	0.15	+	1.45
037 Ice Cream	0.0047	266.02	266.02	238.04	+	0.00	+	11.75
038 Dairy Products N.E.C	0.0117	264.68	264.15	252.52	+	0.20	+	4.82
039 Wheat Flour	2.3034	195.25	189.87	196.86	+	2.83	-	0.82
040 Other Cereal Flour	0.0604	226.05	226.42	327.54	-	0.16	-	30.99
041 Sugar Refined	1.7975	202.58	204.64	272.80	-	1.01	-	25.74
042 Chocolate	0.0139	100.00	100.00	99.45	+	0.00	+	0.55
043 Sugar Confectionary	0.0738	128.44	128.44	128.15	+	0.00	+	0.23
044 Coffee & Tea	0.7303	253.35	253.21	232.40	+	0.06	+	9.01
045 Spices	0.1449	201.96	202.06	190.38	-	0.05	+	6.08
046 Other Food Products	0.0336	294.50	294.50	293.85	+	0.00	+	0.22
047 Mineral Water	0.0207	207.93	208.51	197.57	-	0.28	+	5.24
048 Beverages	0.6303	172.85	172.85	172.33	+	0.00	+	0.30
049 Tobacco Products	1.2998	318.37	318.37	435.03	+	0.00	-	26.82
Textiles & Apparels	10.3289	209.22	207.78	201.76	+	0.69	+	3.70
050 Cotton Yarn	5.2491	204.94	202.18	191.63	+	1.37	+	6.95
051 Nylon Yarn	0.1719	143.99	143.99	143.99	+	0.00	+	0.00
052 Blended Yarn	0.1689	186.96	184.65	179.94	+	1.25	+	3.90
053 Woven Fabrics	0.0128	316.28	316.28	286.46	+	0.00	+	10.41
054 Cotton Fabrics	0.6343	211.50	211.50	209.09	+	0.00	+	1.15
055 Other Fabrics	1.1016	227.16	227.16	224.94	+	0.00	+	0.99
056 Silk & Reyon Fabrics	0.7350	188.14	188.14	191.76	+	0.00	-	1.89
057 Towels	0.1235	276.14	276.14	271.17	+	0.00	+	1.83

Annexure B: Wholesale Price Indices by Major Groups & Commodities

(2007-08=100)

Item and Specification	Weight	Index Numbers			% Change in Nov 2017 over			
		Nov 17	Oct 17 16	Nov	Oct 2017	Nov 2016		
058 Blankets	0.0029	257.93	247.38	247.52	+	4.26	+	4.21
059 Bed Sheets	0.0913	256.87	256.87	257.96	+	0.00	-	0.42
060 Quilts	0.0019	222.32	222.32	203.79	+	0.00	+	9.09
061 Woolen Carpets	0.0383	196.43	196.43	196.43	+	0.00	+	0.00
062 Synthetic Carpets	0.0566	130.95	130.95	129.25	+	0.00	+	1.32
063 Hosiery Products	0.8832	244.11	244.11	241.05	+	0.00	+	1.27
064 Readymade Garments	1.0576	201.37	201.37	200.44	+	0.00	+	0.46
Leather Products	0.7115	195.77	199.75	202.86	-	1.99	-	3.50
065 Leather Without Hair	0.2973	212.68	221.97	229.40	-	4.19	-	7.29
066 Other Leather N.E.C	0.2567	207.02	207.31	207.31	-	0.14	-	0.14
067 Footwears	0.1575	145.51	145.51	145.51	+	0.00	+	0.00
Other Transportable Goods	22.3659	176.98	173.59	165.19	+	1.95	+	7.14
068 Timber	0.0165	231.53	231.53	224.68	+	0.00	+	3.05
069 Printing Paper	0.4279	166.45	166.31	164.90	+	0.08	+	0.94
070 Hard Board	0.1579	225.00	225.00	197.92	+	0.00	+	13.68
071 Coke	0.2797	163.45	163.45	163.45	+	0.00	+	0.00
072 Motor Spirit	1.5336	128.35	124.14	108.54	+	3.39	+	18.25
073 Diesel Oil	5.2664	166.05	155.86	144.34	+	6.54	+	15.04
074 Kerosine Oil	0.2151	141.66	127.80	115.11	+	10.85	+	23.06
075 Furnace Oil	3.2664	112.15	110.73	92.32	+	1.28	+	21.48
076 Mobil Oil	0.7114	200.62	200.23	195.35	+	0.19	+	2.70
077 Chemicals	1.7720	179.89	177.12	175.41	+	1.56	+	2.55
078 Dyeing Material	0.1539	146.55	146.55	146.55	+	0.00	+	0.00
079 Fertilizers	2.8657	220.00	216.49	216.35	+	1.62	+	1.69
080 Pesticides	0.2763	307.23	306.92	308.75	+	0.10	-	0.49
081 Insecticides	0.1276	137.12	138.62	135.98	-	1.08	+	0.84
082 Paints & Varnishes	0.1916	299.42	299.42	295.36	+	0.00	+	1.37
083 Medicines	1.1428	176.89	176.89	168.53	+	0.00	+	4.96
084 Soaps & Detergents	0.8168	191.45	191.45	187.81	+	0.00	+	1.94
085 Auto Tyres	0.2703	177.07	177.07	177.38	+	0.00	-	0.17
086 Plastic Products	0.4550	226.00	225.88	225.73	+	0.05	+	0.12
087 Glass sheets	0.2089	302.27	298.97	283.21	+	1.10	+	6.73
088 Other Glass Articles	0.1635	318.10	317.24	299.07	+	0.27	+	6.36
089 Ceramics & Sanitary Fixture	0.0244	232.65	232.65	234.18	+	0.00	-	0.65
090 Bricks, Blocks & Tiles	0.1566	223.21	222.47	219.15	+	0.33	+	1.85
091 Cement	1.8145	212.69	217.15	212.63	-	2.05	+	0.03
092 Bed Foam	0.0006	170.33	170.33	164.33	+	0.00	+	3.65
093 Matches	0.0505	171.36	171.36	162.62	+	0.00	+	5.37
Metal Product, Machinery & Eq	8.7156	177.63	177.34	174.10	+	0.16	+	2.03
094 Pig Iron	0.0593	128.97	128.97	128.97	+	0.00	+	0.00
095 Steel Bar & Sheets	1.4022	140.75	139.70	126.37	+	0.75	+	11.38
096 Pipe Fittings	0.0780	215.66	215.66	193.63	+	0.00	+	11.38
097 Steel Products	0.3879	176.70	179.41	177.38	-	1.51	-	0.38
098 Engines & Motors	0.0046	116.98	116.98	128.30	+	0.00	-	8.82
099 Vacuum Pumps	0.0155	123.69	123.69	133.32	+	0.00	-	7.22
100 Air Conditioners	0.0049	200.10	200.10	201.18	+	0.00	-	0.54
101 Cultivators	0.0551	190.66	190.66	190.66	+	0.00	+	0.00
102 Chuff Cutter	0.1293	153.46	153.46	153.46	+	0.00	+	0.00
103 Tractors	0.0028	201.75	201.75	201.75	+	0.00	+	0.00
104 Lathe Machines	0.0525	241.06	241.06	241.06	+	0.00	+	0.00
105 Concrete Mixture	0.0107	138.83	138.83	138.83	+	0.00	+	0.00
106 Fridge, WashM, SewM, Fans, Iron	1.1645	216.72	214.97	204.01	+	0.81	+	6.23
107 Electric Wires	0.0912	205.92	205.92	200.83	+	0.00	+	2.53
108 Lighting Equipments	1.4431	170.98	170.98	172.50	+	0.00	-	0.88
109 Radio & Television	0.1843	140.42	140.42	140.42	+	0.00	+	0.00
110 Motor Vehicles	0.0244	195.36	195.36	191.39	+	0.00	+	2.07
111 Motorcycles	0.2570	126.05	125.89	125.89	+	0.13	+	0.13
112 Bicycles	3.3483	187.65	187.65	188.81	+	0.00	-	0.61