

Monthly Review on Price Indices



August, 2015
(Base 2007-08)

Government of Pakistan
Statistics Division
Pakistan Bureau of Statistics
Islamabad

Inflation in Brief

1. CPI inflation, General, increased by 1.8% on year-on-year basis in August 2015 as compared to 1.8% in the previous month and by 7.0% in August 2014. On month-on-month basis, it increased by 0.2% in August 2015 as compared to increase of 0.4% in the previous month and 0.3% in August 2014.
2. Core inflation measured by non-food non-energy CPI (Core NFNE) increased by 4.0% on (YoY) basis in August 2015 as compared to 4.1% in the previous month and by 7.9% in August 2014. On (MoM) basis, it increased by 0.1% in August 2015 as compared to increase of 0.6% in the previous month and 0.2% in August 2014.
3. Core inflation, measured by 20% weighted trimmed mean CPI (Core Trimmed) increased by 2.8% on (YoY) basis in August 2015 as compared to 2.8% in the previous month and by 7.1% in August 2014. On (MoM) basis, it increased by 0.1% in August 2015 as compared to increase of 0.5% in the previous month and an increase of 0.2% in August 2014.
4. SPI inflation on YoY decreased by 1.5% in August 2015 as compared to decrease of 0.5% a month earlier and an increase of 5.2% in August 2014. On MoM basis, it decreased 0.2% in August 2015 as compared to an increase of 0.3% in the month earlier and increase of 0.8% in August 2014.
5. WPI inflation on YoY basis decreased by 2.9% in August 2015 as compared to decrease of 2.9% a month earlier and an increase of 3.3% in August 2014. WPI inflation on MoM basis it decreased by 0.5% in August 2015 as compared to decrease of 0.4% a month earlier and decrease of 0.5% in August 2014.
6. Figures 1 and 2 show graphically the data of Table 1. Table 1.1 shows "Period Average" and "YoY" percent changes in indices of three years.

Table 1: Inflation (%) (Base 2007-08)

Period	CPI						Core Inflation				SPI**		WPI	
	General		Food		Non-food		NFNE*		Trimmed		YoY	MoM	YoY	MoM
	YoY	MoM	YoY	MoM	YoY	MoM	YoY	MoM	YoY	MoM				
Jul 14	7.9	1.7	7.0	2.7	8.5	1.0	8.3	1.1	7.6	0.8	5.9	2.0	6.6	0.5
Aug14	7.0	0.3	5.6	0.6	8.1	0.2	7.9	0.2	7.1	0.2	5.2	0.8	3.3	-0.5
Sep14	7.7	0.4	7.2	0.0	8.0	0.6	8.1	0.7	7.1	0.2	5.4	0.2	2.7	0.2
Oct 14	5.8	0.2	5.2	-0.2	6.3	0.5	7.8	0.7	6.0	0.4	4.1	0.0 ¹	1.3	-0.3
Nov 14	4.0	-0.5	2.1	-0.4	5.4	-0.6	6.9	-0.5	5.3	0.1	-0.3	-1.1	0.0 ²	-1.0
Dec 14	4.3	-1.0	3.4	-2.1	4.9	-0.2	6.7	0.1	5.2	0.0	0.8	-1.5	-0.9	-1.9
Jan 15	3.9	0.1	3.0	-0.5	4.5	0.5	6.4	0.7	4.8	0.3	1.1	-0.9	-2.4	-1.0
Feb 15	3.2	-0.9	2.1	-1.8	4.0	-0.3	6.2	0.0	4.2	-0.2	0.2	-1.0	-3.4	-1.1
Mar 15	2.5	0.2	0.5	0.5	3.9	0.0	5.9	0.1	3.8	0.0	-1.9	0.0	-3.7	0.0 ³
Apr 15	2.1	1.3	0.0	1.4	3.7	1.3	5.4	1.4	3.1	0.6	-1.6	0.4	-2.9	0.9
May 15	3.2	0.8	3.0	1.8	3.3	0.0	4.9	0.0	3.9	0.1	1.2	1.3	-1.8	1.1
Jun-15	3.2	0.6	3.2	1.2	3.2	0.2	4.6	0.1	3.8	0.2	1.1	1.0	-2.0	1.2
Jul-15	1.8	0.4	0.6	0.1	2.7	0.5	4.1	0.6	2.8	0.5	-0.5	0.3	-2.9	-0.4
Aug-15	1.8	0.2	0.4	0.3	2.8	0.2	4.0	0.1	2.8	0.1	-1.5	-0.2	-2.9	-0.5

*NFNE is non-food non-energy,

** SPI for quintile 1

¹ Actual figure is -0.03, displayed in rounded figure

²Actual figure is 0.02, ³Actual figure is 0.01, displayed in rounded figure

Table 1.1 : Period Average and YoY % Changes of Indices (Base 2007-08)

Index	Averages July-Aug % Changes			Aug over Aug % Changes		
	2015-16	2014-15	2013-14	2015-16	2014-15	2013-14
CPI	1.83	7.44	8.41	1.79	6.99	8.55
SPI	-0.99	5.53	9.93	-1.49	5.17	10.07
WPI	-2.87	4.91	7.41	-2.87	3.31	8.26

Figure 1: CPI Inflation YoY, Special Indices

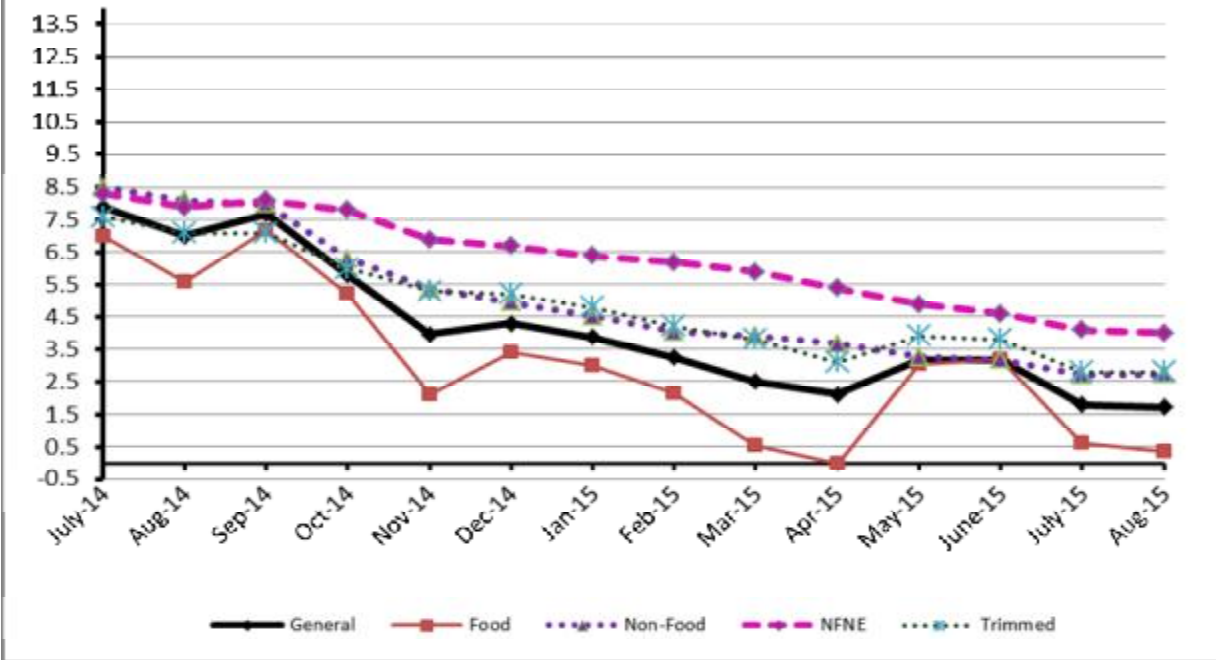
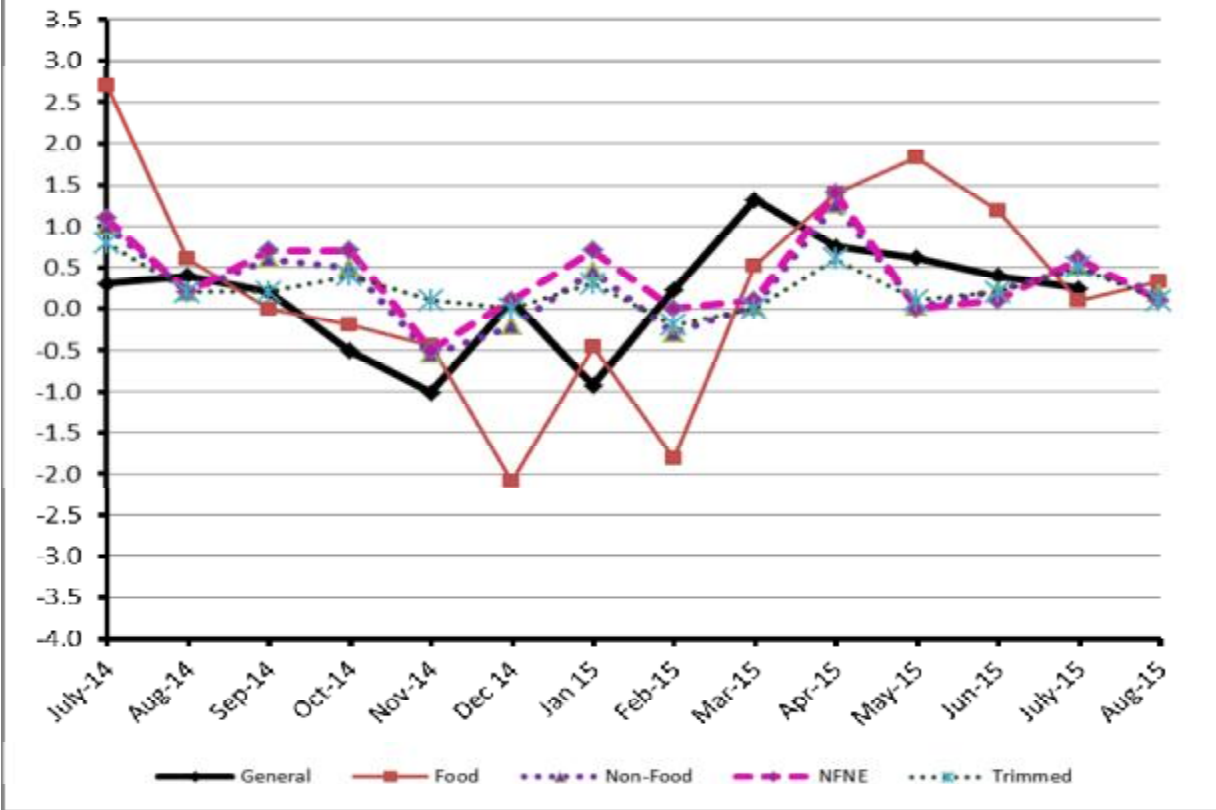


Figure 2: CPI Inflation MoM, Special Indices



II. Consumer Price Index (CPI)

The Consumer Price Index of August, 2015 has increased by 0.24 over July, 2015 and 1.79% over corresponding month of the last year, i.e. August 2014.

Table 2 : Consumer Price Index by Group of Commodities and Services (Base 2007-08)

No	Group	Group Weight (%)	Indices			% Change Aug 2015 Over		Impact (In % points) Aug 2015 Over	
			Aug 2015	July 2015	Aug 2014	July 2015	Aug 2014	July 2015	Aug 2014
	General	100.00	202.25	201.76	198.70	0.24	1.79	0.24	1.79
1.	Food & Non-alcoholic Bev.	34.83	220.51	219.76	221.77	0.34	-0.57	0.13	-0.22
	<i>Non-perishable Food Items</i>	29.84	217.89	218.41	215.89	-0.24	0.93	-0.08	0.30
	<i>Perishable Food Items</i>	4.99	236.16	227.80	256.91	3.67	-8.08	0.21	-0.52
2.	Alcoholic Bev. & Tobacco	1.41	309.90	309.83	266.59	0.02	16.25	0.00	0.31
3.	Clothing & Footwear	7.57	220.27	219.65	210.19	0.28	4.80	0.02	0.38
4.	Housing, Water, Electricity, Gas & Fuels	29.41	180.31	179.77	171.65	0.30	5.05	0.08	1.28
5.	Furnishing & Household Equipment Maintenance	4.21	214.22	213.53	205.48	0.32	4.25	0.01	0.19
6.	Health	2.19	179.01	178.91	173.42	0.06	3.22	0.00	0.06
7.	Transport	7.20	178.02	178.62	198.70	-0.34	-10.41	-0.02	-0.75
8.	Communication	3.22	130.36	130.35	129.83	0.01	0.41	0.00	0.01
9.	Recreation & Culture	2.02	193.03	193.01	189.02	0.01	2.12	0.00	0.04
10.	Education	3.94	209.23	209.17	191.45	0.03	9.29	0.00	0.35
11.	Restaurants & Hotels	1.23	250.26	249.70	239.85	0.22	4.34	0.00	0.06
12.	Miscellaneous	2.76	223.88	223.13	218.63	0.34	2.40	0.01	0.07

Main contributors to month-on-month and year-on-year percentage changes are given below and detail is given in Annexure A.

- Month-on-month** Top few commodities which varied from previous month i.e. July 2015 are given below:-

Food Items Increased: Tomatoes (33.09%), Fresh Vegetables (17.87%), Eggs (12.46%), Tea (7.21%), Pulse Gram (6.54%), Besan (4.39%), Potatoes (3.65%) and Gram Whole (3.05%).

Decreased: Chicken (16.71%), Fresh Fruits (8.82%), Onions (3.09%) and Pulse Moong (2.66%).

Non-food Items Increased: Electricity (1.45%).

Decreased: Kerosene Oil (3.37%).

- Year-on-Year:** Top few commodities which varied from previous year i.e. August 2014 are given below:-

Food Items Increased: Pulse Gram (46.77%), Besan (39.41%), Tea (21.80%), Pulse Mash (17.39%), Tomatoes (16.69%), Cigarettes (16.38%), Gram Whole (14.66%) and Sugar (13.68%).

Decreased: Potatoes (62.31%), Cooking Oil (12.55%), Vegetable Ghee (11.09%) and Rice (10.89%).

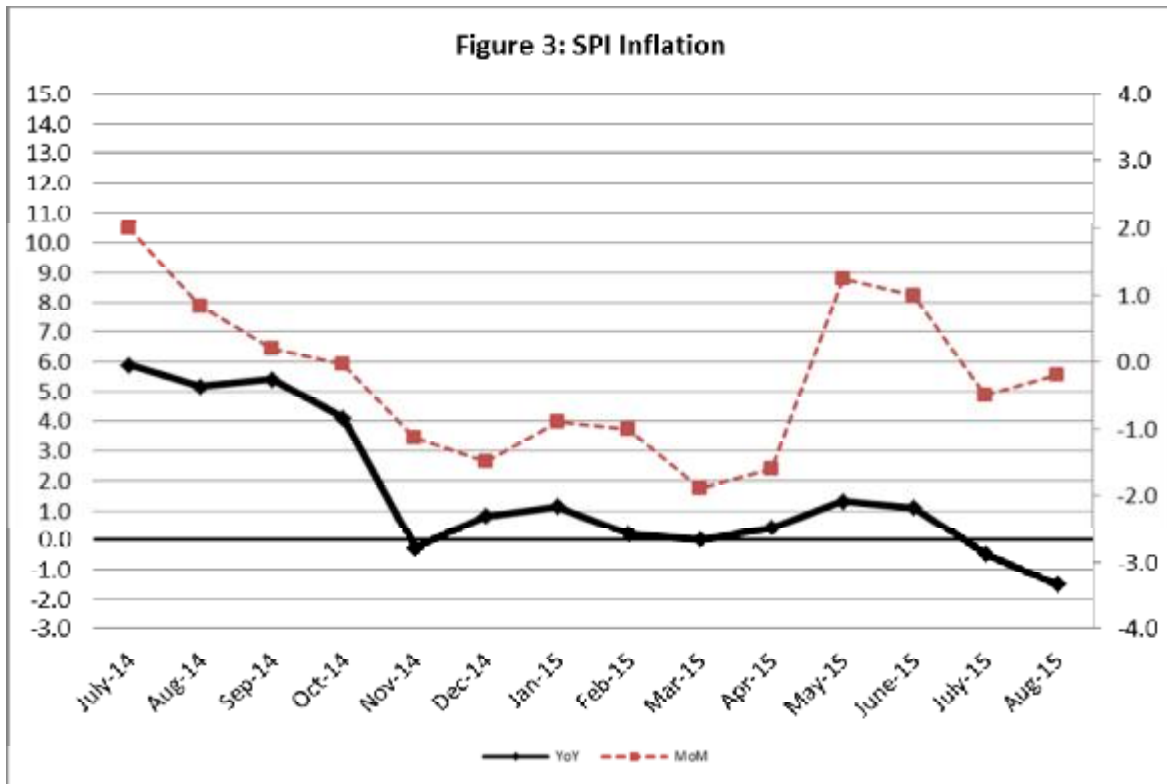
Non-food Items Increased: Woolen Readymade Garments (10.31%).

Decreased: Kerosene Oil (22.56%) and Motor Fuel (19.67%).

III. Sensitive Price Indicator

Quintile-wise percentage changes YoY and MoM are given below in Table 3. The series from July 2014 to August 2015 is also graphed below in Figure 3.

Table 3 : Sensitive Price Indicator (Base 2007-08)					
Quintiles	Indices			% Change August 2015 over	
	August 2015	July 2015	August 2014	July 2015	August 2014
1	205.65	206.04	208.76	-0.19	-1.49
2	211.92	212.55	214.85	-0.30	-1.36
3	215.53	216.19	217.62	-0.31	-0.96
4	217.42	218.21	219.57	-0.36	-0.98
5	214.77	215.76	218.08	-0.46	-1.52
Combined	214.33	215.13	217.08	-0.37	-1.27



IV. Wholesale Price Index

The Wholesale Price Index for August 2015 decreased by 0.53% over July, 2015. It decreased by 2.94% over the corresponding month of the last year. YoY and MoM movements, from July, 2014 to August 2015 are also graphed below in Figure 4.

Table 4 : Wholesale Price Index by Group of Commodities (Base 2007-08)

No.	Group	Group Weight (%)	Indices			% Change August, 2015 over		Impact (in %age points) August, 2015 over	
			Aug. 2015	July 2015	Aug. 2014	July 2015	Aug. 2014	July 2015	Aug. 2014
	General	100.00	208.42	209.58	214.73	-0.53	-2.94	-0.53	-2.94
1.	Agriculture, Forestry & Fishery Products	25.77	225.90	224.93	224.73	0.43	0.52	0.12	0.14
2.	Ores & Minerals, Electricity, Gas & Water	12.04	244.06	245.36	242.91	-0.36	0.47	-0.36	0.47
3.	Food Products, Beverages & Tobacco, Textiles, Apparel & Leather Products	31.11	210.52	210.44	207.15	0.04	1.63	0.01	0.49
	i. Food Products, Bev. & Tobacco	20.07	224.46	223.32	213.92	0.51	4.93	0.11	0.99
	ii. Textiles and Apparel	10.33	184.63	186.62	194.26	-1.07	-4.96	-0.10	-0.46
	iii. Leather Products	0.71	193.00	193.00	203.42	0.00	-5.12	0.00	-0.03
4.	Other Transportable Goods except Metal Products, Machinery & Equipment	22.37	180.27	185.86	215.17	-3.01	-16.22	-0.60	-3.64
5.	Metal Products, Machinery & Equipment	8.72	172.29	172.57	172.17	-0.16	0.07	-0.01	0.00

Main contributors to month-on-month and year-on-year percentage changes are given below and detail is given in Annexure B.

1. **Month-on-month** Top few commodities which varied from previous month i.e. July, 2015 are given below:-

Increased: Vegetables (27.96%), Eggs (11.48%), Coffee & Tea (10.51%), Fish (10.24%), Unmanufactured Tobacco (2.60%), Electric Wires (2.44%), Other Cereals Flour (2.29%), Oil Cakes (2.15%), Bajra (2.10%).

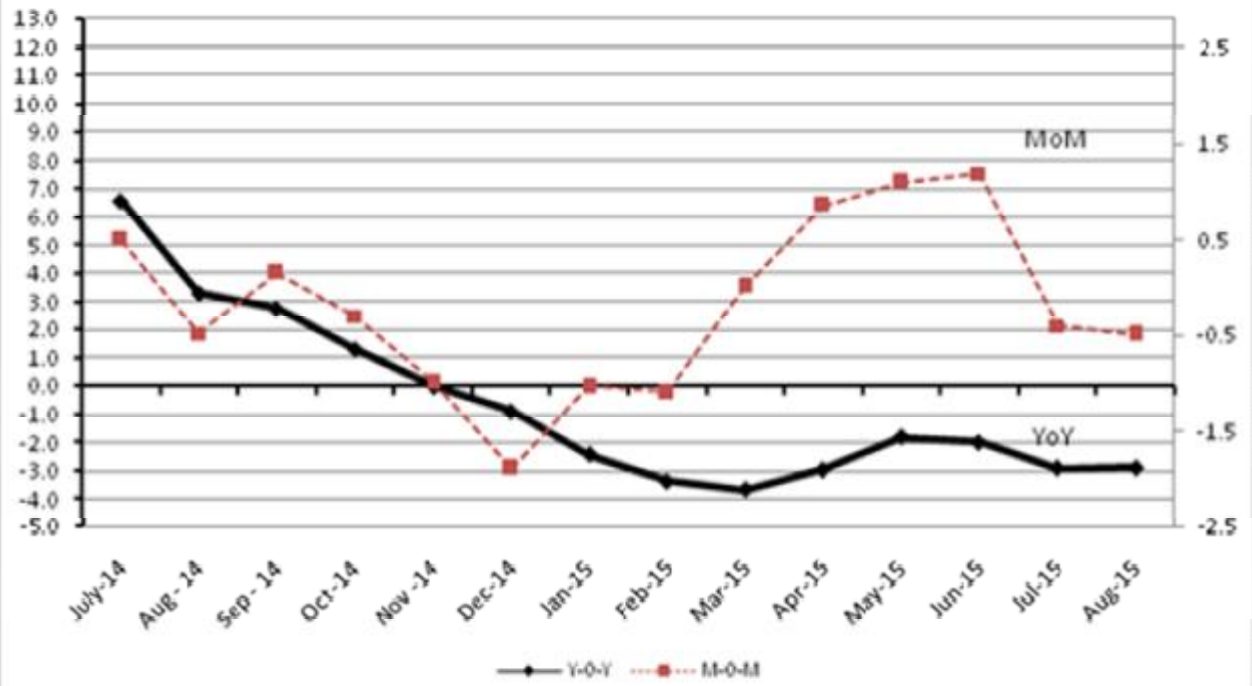
Decreased: Poultry (16.23%), Furnace Oil (15.58%), Fresh Fruits (10.80%), Kerosene Oil (7.48%), Stimulant and Spice Crops (6.50%), Diesel Oil (5.13%).

2. **Year-on-year** Top few commodities which varied from previous year i.e. August, 2014 are given below:-

Increased: Other Cereal Flour (57.64%), Fish (39.24%), Coffee & Tea (28.57%), Tobacco Products (22.69%), Pulses (21.37%), Bajra (19.32%), Sugar Confectionary (15.41%), Quilt (14.16%),

Decreased: Potatoes (72.72%), Furnace Oil (46.42%), Kerosene Oil (42.52%), Diesel (31.76%), Motor Spirit (28.92%), Stimulant & Spice Crops (24.20%), Insecticides (23.457%) and Fibre Crops (20.99%).

Figure 4: WPI Inflation



Annexure A: Consumer Price Index Numbers by Commodity Groups & Commodities (2007-08=100)

Item and Specification	Weight	Index Numbers			% Change in Aug 2015 over			
		Aug 15	Jul 15	Aug 14	Jul 2015	Aug 2014		
General	100.0000	202.25	201.76	198.70	+	0.24	+	1.79
Food and non-alcoholic Bevera	34.8343	220.51	219.76	221.77	+	0.34	-	0.57
01 Wheat	0.3477	194.04	195.34	208.97	-	0.67	-	7.14
02 Wheat Flour	4.1648	208.24	209.15	222.00	-	0.44	-	6.20
03 Wheat Product	0.0959	212.75	212.14	218.37	+	0.29	-	2.57
04 Besan	0.1500	236.90	226.93	169.93	+	4.39	+	39.41
05 Rice	1.5821	174.03	174.19	195.30	-	0.09	-	10.89
06 Cereals	0.1563	243.87	242.61	237.79	+	0.52	+	2.56
07 Bakery & Confectionary	1.1550	209.48	208.80	205.44	+	0.33	+	1.97
08 Nimco	0.4574	240.88	240.02	234.50	+	0.36	+	2.72
09 Meat	2.4303	252.42	250.33	241.09	+	0.83	+	4.70
10 Chicken	1.3596	189.75	227.83	202.16	-	16.71	-	6.14
11 Fish	0.2970	211.30	211.33	216.83	-	0.01	-	2.55
12 Milk Fresh	6.6800	255.57	254.76	244.41	+	0.32	+	4.57
13 Milk Products	0.6338	247.22	247.17	240.29	+	0.02	+	2.88
14 Milk Powder	0.1129	227.17	226.78	224.27	+	0.17	+	1.29
15 Eggs	0.4555	196.17	174.43	211.80	+	12.46	-	7.38
16 Mustard Oil	0.0952	153.77	152.44	159.06	+	0.87	-	3.33
17 Cooking Oil	1.7538	141.58	142.10	161.90	-	0.37	-	12.55
18 Vegetable Ghee	2.0714	140.34	140.77	157.85	-	0.31	-	11.09
19 Dry Fruits	0.2543	250.52	252.84	236.61	-	0.92	+	5.88
20 Fresh Fruits	1.8649	240.08	263.31	225.59	-	8.82	+	6.42
21 Pulse Masoor	0.2712	195.95	195.25	180.35	+	0.36	+	8.65
22 Pulse Moong	0.2336	298.00	306.14	287.40	-	2.66	+	3.69
23 Pulse Mash (Washed)	0.2098	256.02	253.39	218.09	+	1.04	+	17.39
24 Pulse Gram	0.2361	245.70	230.62	167.40	+	6.54	+	46.77
25 Gram Whole	0.1616	205.35	199.27	179.10	+	3.05	+	14.66
26 Beans	0.0269	234.52	232.93	241.77	+	0.68	-	3.00
27 Potatoes	0.4699	182.67	176.23	484.66	+	3.65	-	<u>62.31</u>
28 Onion	0.5340	247.23	255.12	251.11	-	3.09	-	1.55
29 Tomatoes	0.4419	197.35	148.28	169.12	+	33.09	+	16.69
30 Fresh Vegetables	1.6802	253.47	215.04	252.93	+	17.87	+	0.21
31 Sugar	1.0445	233.44	232.55	205.35	+	0.38	+	13.68
32 Gur	0.0220	285.83	279.18	259.98	+	2.38	+	9.94
33 Honey	0.0446	304.35	304.35	292.72	+	0.00	+	3.97
34 SweetMeat	0.2483	237.20	235.91	229.38	+	0.55	+	3.41
35 Beverages	1.1990	215.71	215.67	209.18	+	0.02	+	3.12
36 Jam, Tomato Ketchup & Pickles	0.2454	210.53	209.37	197.56	+	0.55	+	6.57
37 Condiments	0.2656	258.10	258.03	249.01	+	0.03	+	3.65
38 Spices	0.5441	238.09	237.36	229.07	+	0.31	+	3.94
39 Tea	0.8377	252.00	235.06	206.89	+	7.21	+	21.80
Alcoholic Beverages, Tobacco	1.4135	309.90	309.83	266.59	+	0.02	+	16.25
40 Cigarettes	1.3906	311.47	311.47	267.63	+	0.00	+	16.38
41 Betel Leaves & Nuts	0.0229	214.46	210.25	203.31	+	2.00	+	5.48
Clothing and footwear	7.5708	220.27	219.65	210.19	+	0.28	+	4.80
42 Cotton Cloth	1.7286	214.33	213.49	206.81	+	0.39	+	3.64
43 Woolen Cloth	0.8759	236.10	234.73	228.48	+	0.58	+	3.34
44 Readymade Garments	0.9739	225.84	225.49	211.17	+	0.16	+	6.95
45 Woolen Readymade Garments	0.3964	240.86	240.86	218.34	+	0.00	+	10.31
46 Hosiery	0.5094	233.85	232.85	221.44	+	0.43	+	5.60
47 Dopatta	0.4412	233.88	232.89	226.08	+	0.43	+	3.45
48 Cleaning and Laundry	0.2110	239.56	238.32	230.67	+	0.52	+	3.85
49 Tailoring	0.8840	278.68	278.39	255.86	+	0.10	+	8.92
50 Footwear	1.5504	164.95	164.77	163.89	+	0.11	+	0.65
Housing, water, Elec., Gas an	29.4149	180.31	179.77	171.65	+	0.30	+	5.05
51 House Rent	21.8149	168.87	168.87	159.82	+	0.00	+	5.66
52 Construction Input Items	0.5623	240.99	239.75	234.79	+	0.52	+	2.64
53 Construction Wage Rates	0.3331	216.01	215.28	201.60	+	0.34	+	7.15
54 Water Supply	0.4971	149.92	149.92	149.92	+	0.00	+	0.00
55 Electricity	4.3985	238.10	234.69	227.44	+	1.45	+	4.69

Annexure A: Consumer Price Index Numbers by Commodity Groups & Commodities (2007-08=100)

	Item and Specification	Weight	Index Numbers			% Change in Aug 2015 over	
			Aug 15	Jul 15	Aug 14	Jul 2015	Aug 2014
56	Gas	1.5756	143.81	143.81	143.81	+ 0.00	+ 0.00
57	Kerosene Oil	0.0057	216.11	223.65	279.05	- 3.37	- 22.56
58	Firewood Whole	0.2277	275.90	275.52	265.16	+ 0.14	+ 4.05
	<i>Furnishing and household equi</i>	4.2082	214.22	213.53	205.48	+ 0.32	+ 4.25
59	Furniture	0.3315	206.08	205.94	196.29	+ 0.07	+ 4.99
60	Household Textiles	0.6489	211.55	209.69	200.71	+ 0.89	+ 5.40
61	Household Equipment	0.5936	175.47	175.41	171.16	+ 0.03	+ 2.52
62	Utensils	0.3212	216.86	216.41	206.97	+ 0.21	+ 4.78
63	Plastic Products	0.2547	203.54	203.33	196.98	+ 0.10	+ 3.33
64	Washing Soaps & Detergents	0.7893	224.99	223.42	221.65	+ 0.70	+ 1.51
65	Sewing Needle & Dr Cell	0.1496	200.00	198.97	182.20	+ 0.52	+ 9.77
66	Household Servant	1.0432	234.86	234.86	222.19	+ 0.00	+ 5.70
67	Marriage Hall Charges	0.0762	232.28	232.28	225.21	+ 0.00	+ 3.14
	<i>Health</i>	2.1868	179.01	178.91	173.42	+ 0.06	+ 3.22
68	Drugs & Medicines	1.2667	148.93	148.93	145.60	+ 0.00	+ 2.29
69	Medical Equipments	0.0080	226.26	226.26	220.56	+ 0.00	+ 2.58
70	Doctor (MBBS) Clinic Fee	0.5904	242.85	242.85	234.15	+ 0.00	+ 3.72
71	Medical Tests	0.3217	179.13	178.44	170.34	+ 0.39	+ 5.16
	<i>Transport</i>	7.2023	178.02	178.62	198.70	- 0.34	- 10.41
72	Motor Vehicles	0.6630	163.39	163.28	163.48	+ 0.07	- 0.06
73	Motor Vehicle Accessories	0.2439	226.83	226.83	229.13	+ 0.00	- 1.00
74	Motor Fuel	3.0269	153.01	154.54	190.47	- 0.99	- 19.67
75	Mechanical Service	0.4552	216.92	216.37	206.40	+ 0.25	+ 5.10
76	Motor Vehicle Tax	0.1099	210.18	210.18	210.18	+ 0.00	+ 0.00
77	Transport Services	2.7034	197.35	197.35	212.03	+ 0.00	- 6.92
	<i>Communication</i>	3.2198	130.36	130.35	129.83	+ 0.01	+ 0.41
78	Postal Services	0.0662	229.93	229.42	216.02	+ 0.22	+ 6.44
79	Communication & Apparatus	3.1536	128.27	128.27	128.02	+ 0.00	+ 0.20
	<i>Recreation and culture</i>	2.0227	193.03	193.01	189.02	+ 0.01	+ 2.12
80	Recreation & Culture	0.8634	128.25	128.25	127.46	+ 0.00	+ 0.62
81	Text Books	0.5706	290.62	290.62	280.60	+ 0.00	+ 3.57
82	Newspapers	0.1934	175.42	175.42	175.42	+ 0.00	+ 0.00
83	Stationery	0.3953	202.25	202.14	197.98	+ 0.05	+ 2.16
	<i>Education</i>	3.9431	209.23	209.17	191.45	+ 0.03	+ 9.29
84	Education	3.9431	209.23	209.17	191.45	+ 0.03	+ 9.29
	<i>Restaurants and hotels</i>	1.2286	250.26	249.70	239.85	+ 0.22	+ 4.34
85	Readymade Food	1.2286	250.26	249.70	239.85	+ 0.22	+ 4.34
	<i>Misc. goods and services</i>	2.7550	223.88	223.13	218.63	+ 0.34	+ 2.40
86	Personal Care	1.4935	208.36	207.30	202.70	+ 0.51	+ 2.79
87	Cosmetics	0.3853	191.82	191.12	183.29	+ 0.37	+ 4.65
88	Blades	0.0322	188.25	187.44	184.82	+ 0.43	+ 1.86
89	Personal Equipments	0.8440	267.34	267.12	264.24	+ 0.08	+ 1.17

Annexure B: Wholesale Price Indices by Major Groups & Commodities (2007-08=100)

Item and Specification	Weight	Index Numbers			% Change in Aug 2015 over			
		Aug 15	Jul 15	Aug 14	Jul 2015	Aug 2014		
General	100.0000	208.42	209.53	214.73	-	0.53	-	2.94
Agriculture Forestry & Fisher	25.7674	225.90	224.93	224.73	+	0.43	+	0.52
001 Wheat	0.6297	198.78	199.02	214.37	-	0.12	-	7.27
002 Maize	0.6764	197.89	194.73	193.63	+	1.62	+	2.20
003 Rice	2.4413	157.78	161.31	180.50	-	2.19	-	12.59
004 Sorghum / Jowar	0.0214	340.07	336.99	328.11	+	0.91	+	3.65
005 Millet / Bajra	0.0374	207.85	203.58	174.19	+	2.10	+	19.32
006 Vegetables	1.2441	315.25	246.36	304.25	+	27.96	+	3.62
007 Fresh Fruits	1.5144	279.94	313.83	256.65	-	10.80	+	9.07
008 Dry Fruits	0.2478	238.67	241.48	217.97	-	1.16	+	9.50
009 Cotton Seeds	1.1511	230.46	236.29	216.43	-	2.47	+	6.48
010 Other Oil Seeds	0.0722	162.61	160.55	189.39	+	1.28	-	14.14
011 Edible Roots / Potatoes	0.2540	150.28	152.85	550.88	-	1.68	-	<u>72.72</u>
012 Stimulant & Spice Crops	0.1634	325.37	348.00	429.22	-	6.50	-	24.20
013 Pulses	0.4901	235.92	235.73	194.38	+	0.08	+	21.37
014 Sugar Crops	1.0725	286.29	286.29	267.92	+	0.00	+	6.86
015 Fibre Crops	5.3169	152.62	159.33	175.37	-	4.21	-	12.97
016 Unmanufactured Tobacco	0.0742	226.94	221.18	206.81	+	2.60	+	9.73
017 Poultry	0.5633	199.19	237.79	212.06	-	16.23	-	6.07
018 Raw Milk from Bovine Animals	7.0279	252.90	252.90	243.95	+	0.00	+	3.67
019 Eggs	0.5034	206.09	184.87	218.87	+	11.48	-	5.84
020 Raw Animal Materials / Wool	0.0351	173.66	174.22	161.50	-	0.32	+	7.53
021 Hides & Fur Skins, Raw	0.4834	156.45	155.92	145.14	+	0.34	+	7.79
022 Fuel Wood in Logs	0.0179	261.39	259.53	243.47	+	0.72	+	7.36
023 Fish Live Fresh or Chilled	1.7295	339.60	308.06	243.89	+	10.24	+	39.24
Ores/Minerals, Elec., Gas & W	12.0389	244.06	244.93	242.91	-	0.36	+	0.47
024 Coal not Agglomerated	0.7508	223.53	223.53	223.53	+	0.00	+	0.00
025 Natural Gas Liquified	5.7385	199.75	200.06	202.79	-	0.15	-	1.50
026 Salt & Pure Sodium Chloride	0.0584	252.31	252.31	248.50	+	0.00	+	1.53
027 Electrical Energy	5.4912	293.09	294.68	287.44	-	0.54	+	1.97
Food, Beverages, Tobacco, Textil	31.1122	210.52	210.44	207.15	+	0.04	+	1.63
Food Products, Beverages &	20.0718	224.46	223.32	213.92	+	0.51	+	4.93
028 Meat of Animals	3.4559	263.70	262.35	252.65	+	0.51	+	4.37
029 Vegetables & Fruit Juice	0.0058	200.95	200.07	194.12	+	0.44	+	3.52
030 Dried Fruits & Nuts	0.1733	229.85	228.54	219.98	+	0.57	+	4.49
031 Fruit Juices	0.3880	177.53	177.53	171.34	+	0.00	+	3.61
032 Vegetable Oils Refined	1.9242	152.52	153.56	163.56	-	0.68	-	6.75
033 Vegetable Ghee	1.5632	120.70	122.09	139.94	-	1.14	-	13.75
034 Oil Cakes	0.9611	199.15	194.96	212.95	+	2.15	-	6.48
035 Processed Liquid Milk	4.4437	248.71	248.71	231.82	+	0.00	+	7.29
036 Milk & Cream in Solid Form	0.0316	219.44	220.46	214.15	-	0.46	+	2.47
037 Ice Cream	0.0047	219.91	219.91	219.91	+	0.00	+	0.00
038 Dairy Products N.E.C	0.0117	244.55	243.80	235.94	+	0.31	+	3.65
039 Wheat Flour	2.3034	191.08	190.27	201.98	+	0.43	-	5.40
040 Other Cereal Flour	0.0604	214.97	210.16	136.37	+	2.29	+	<u>57.64</u>
041 Sugar Refined	1.7975	249.46	249.40	220.01	+	0.02	+	13.39
042 Chocolate	0.0139	99.19	99.19	99.19	+	0.00	+	0.00
043 Sugar Confectionary	0.0738	118.04	118.04	102.28	+	0.00	+	15.41
044 Coffee & Tea	0.7303	233.14	210.96	181.34	+	10.51	+	28.57
045 Spices	0.1449	188.81	189.84	191.50	-	0.54	-	1.40
046 Other Food Products	0.0336	292.02	292.02	294.38	+	0.00	-	0.80
047 Mineral Water	0.0207	188.22	188.22	185.63	+	0.00	+	1.40
048 Beverages	0.6303	171.95	171.95	169.18	+	0.00	+	1.64
049 Tobacco Products	1.2998	356.45	356.45	290.52	+	0.00	+	22.69
Textiles & Apparels	10.3289	184.63	186.62	194.26	-	1.07	-	4.96
050 Cotton Yarn	5.2491	167.45	171.27	195.72	-	2.23	-	14.44
051 Nylon Yarn	0.1719	150.22	150.22	163.67	+	0.00	-	8.22
052 Blended Yarn	0.1689	185.58	188.86	193.92	-	1.74	-	4.30
053 Woven Fabrics	0.0128	258.39	258.39	226.82	+	0.00	+	13.92
054 Cotton Fabrics	0.6343	201.65	201.65	196.81	+	0.00	+	2.46
055 Other Fabrics	1.1016	214.27	214.27	203.01	+	0.00	+	5.55

Annexure B: Wholesale Price Indices by Major Groups & Commodities (2007-08=100)

Item and Specification	Weight	Index Numbers			% Change in Aug 2015 over	
		Aug 15	Jul 15	Aug 14	Jul 2015	Aug 2014
056 Silk & Reyon Fabrics	0.7350	183.23	183.23	175.35	+ 0.00	+ 4.49
057 Towels	0.1235	267.20	267.20	244.18	+ 0.00	+ 9.43
058 Blankets	0.0029	235.86	235.86	219.66	+ 0.00	+ 7.38
059 Bed Sheets	0.0913	256.29	256.29	242.12	+ 0.00	+ 5.85
060 Quilts	0.0019	196.84	196.84	172.42	+ 0.00	+ 14.16
061 Woolen Carpets	0.0383	132.14	132.14	132.14	+ 0.00	+ 0.00
062 Synthetic Carpets	0.0566	126.27	126.27	125.42	+ 0.00	+ 0.68
063 Hosiery Products	0.8832	220.66	220.66	206.13	+ 0.00	+ 7.05
064 Readymade Garments	1.0576	193.27	193.27	180.12	+ 0.00	+ 7.30
Leather Products	0.7115	193.00	193.00	203.42	+ 0.00	- 5.12
065 Leather Without Hair	0.2973	212.68	212.68	216.45	+ 0.00	- 1.74
066 Other Leather N.E.C	0.2567	206.27	206.27	230.78	+ 0.00	- 10.62
067 Footwears	0.1575	134.22	134.22	134.22	+ 0.00	+ 0.00
Other Transportable Goods	22.3659	180.27	185.86	215.17	- 3.01	- 16.22
068 Timber	0.0165	204.34	204.34	184.69	+ 0.00	+ 10.64
069 Printing Paper	0.4279	164.56	164.56	169.34	+ 0.00	- 2.82
070 Hard Board	0.1579	197.92	197.92	229.17	+ 0.00	- 13.64
071 Coke	0.2797	163.45	163.45	163.45	+ 0.00	+ 0.00
072 Motor Spirit	1.5336	129.65	131.39	182.40	- 1.32	- 28.92
073 Diesel Oil	5.2664	177.90	187.52	260.69	- 5.13	- 31.76
074 Kerosine Oil	0.2151	165.55	178.93	288.01	- 7.48	- 42.52
075 Furnace Oil	3.2664	90.81	107.57	169.47	- 15.58	- 46.42
076 Mobil Oil	0.7114	199.10	201.05	201.17	- 0.97	- 1.03
077 Chemicals	1.7720	187.61	192.95	194.21	- 2.77	- 3.40
078 Dyeing Material	0.1539	146.55	146.55	143.77	+ 0.00	+ 1.93
079 Fertilizers	2.8657	271.71	272.80	270.28	- 0.40	+ 0.53
080 Pesticides	0.2763	306.30	306.30	270.02	+ 0.00	+ 13.44
081 Insecticides	0.1276	138.59	140.84	181.05	- 1.60	- 23.45
082 Paints & Varnishes	0.1916	295.36	291.69	276.16	+ 1.26	+ 6.95
083 Medicines	1.1428	145.20	145.20	144.21	+ 0.00	+ 0.69
084 Soaps & Detergents	0.8168	180.05	180.02	175.81	+ 0.02	+ 2.41
085 Auto Tyres	0.2703	191.78	191.78	188.21	+ 0.00	+ 1.90
086 Plastic Products	0.4550	228.34	228.67	205.01	- 0.14	+ 11.38
087 Glass sheets	0.2089	231.30	231.30	209.86	+ 0.00	+ 10.22
088 Other Glass Articles	0.1635	243.63	243.63	218.27	+ 0.00	+ 11.62
089 Ceramics & Sanitary Fixture	0.0244	221.62	221.02	200.91	+ 0.27	+ 10.31
090 Bricks, Blocks & Tiles	0.1566	209.99	209.47	202.38	+ 0.25	+ 3.76
091 Cement	1.8145	206.97	207.29	207.44	- 0.15	- 0.23
092 Bed Foam	0.0006	156.67	156.67	150.83	+ 0.00	+ 3.87
093 Matches	0.0505	162.62	162.62	143.20	+ 0.00	+ 13.56
Metal Product, Machinery & Eq	8.7156	172.29	172.56	172.17	- 0.16	+ 0.07
094 Pig Iron	0.0593	128.97	128.97	128.97	+ 0.00	+ 0.00
095 Steel Bar & Sheets	1.4022	136.92	138.82	149.75	- 1.37	- 8.57
096 Pipe Fittings	0.0780	192.08	193.53	175.34	- 0.75	+ 9.55
097 Steel Products	0.3879	173.54	173.54	170.24	+ 0.00	+ 1.94
098 Engines & Motors	0.0046	109.07	109.07	109.07	+ 0.00	+ 0.00
099 Vacuum Pumps	0.0155	115.39	115.39	115.39	+ 0.00	+ 0.00
100 Air Conditioners	0.0049	199.53	199.53	195.53	+ 0.00	+ 2.05
101 Cultivators	0.0551	219.76	219.76	226.90	+ 0.00	- 3.15
102 Chuff Cutter	0.1293	149.20	149.20	149.20	+ 0.00	+ 0.00
103 Tractors	0.0028	214.54	214.54	214.54	+ 0.00	+ 0.00
104 Lathe Machines	0.0525	208.81	208.81	208.81	+ 0.00	+ 0.00
105 Concrete Mixture	0.0107	138.83	138.83	138.83	+ 0.00	+ 0.00
106 Fridge,WashM,SewM,Fans,Iron	1.1645	198.62	198.62	195.93	+ 0.00	+ 1.37
107 Electric Wires	0.0912	192.45	187.86	179.18	+ 2.44	+ 7.41
108 Lighting Equipments	1.4431	167.30	167.30	164.95	+ 0.00	+ 1.42
109 Radio & Television	0.1843	126.49	126.49	126.49	+ 0.00	+ 0.00
110 Motor Vehicles	0.0244	183.03	183.03	182.59	+ 0.00	+ 0.24
111 Motorcycles	0.2570	125.89	125.89	126.92	+ 0.00	- 0.81
112 Bicycles	3.3483	185.63	185.63	182.84	+ 0.00	+ 1.53

