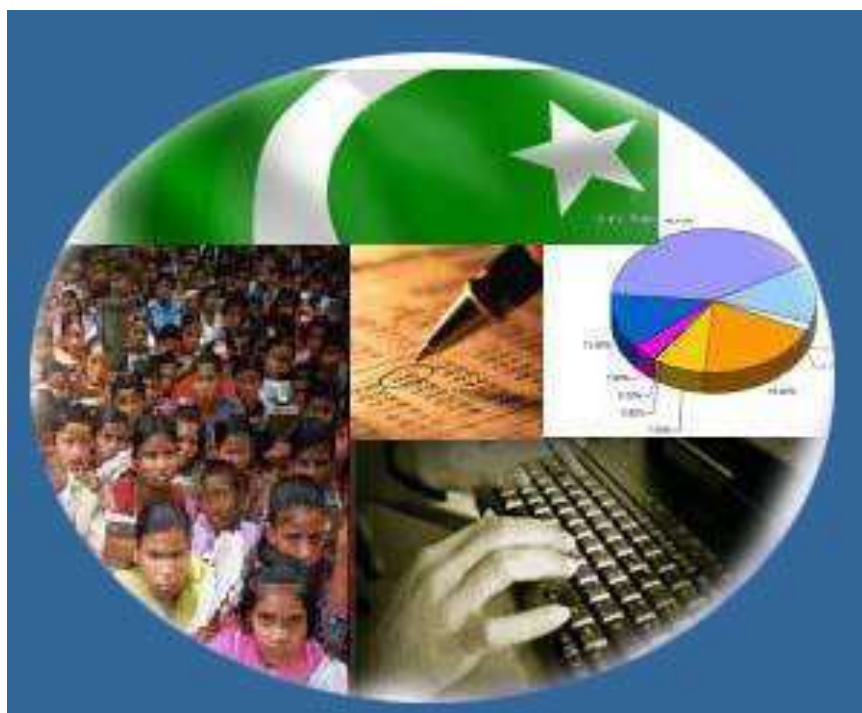




Monthly Review on Price Indices



April, 2016
(Base 2007-08)

Government of Pakistan
Statistics Division
Pakistan Bureau of Statistics
Islamabad

Inflation in Brief

1. CPI inflation General increased by 4.2% on year-on-year basis in April 2016 as compared to an increase of 3.9% in the previous month and 2.1% in April 2015. On month-on-month basis, it increased by 1.6% in April 2016 as compared to increase of 0.2% in the previous month and an increase of 1.3% in April 2015.
2. Core inflation measured by non-food non-energy CPI (Core NFNE) increased by 4.4% on (YoY) basis in April 2016 as compared to increase of 4.7% in the previous month and 5.4% in April 2015. On (MoM) basis, it increased by 1.1% in April 2016 as compared to increase of 0.2% in previous month and increase of 1.4% in April 2015.
3. Core inflation, measured by 20% weighted trimmed mean CPI (Core Trimmed) increased by 3.8% on (YoY) basis in April 2016 as compared to 3.8% in the previous month and by 3.1% in April 2015. On (MoM) basis, it increased by 0.6% in April 2016 as compared to an increase of 0.2% in the previous month and 0.6% in April 2015.
4. SPI inflation on YoY increased by 2.9% in April 2016 as compared to an increase of 3.5% a month earlier and decrease of 1.6% in April 2015. On MoM basis, it decreased by 0.1% in April 2016 as compared to a decrease of 0.2% a month earlier and an increase of 0.4% in April 2015.
5. WPI inflation on YoY basis increased by 0.6% in April 2016 as compared to an increase of 0.2% a month earlier and a decrease of 2.9% in April 2015. WPI inflation on MoM basis increased by 1.3% in April 2016 as compared to decrease of 0.4% a month earlier and an increase of 0.9% in April 2015.
6. Figures 1 and 2 show graphically the data of Table 1. Table 1.1 shows "Period Average" and "YoY" percent changes in indices of three years.

Table 1: Inflation (%) (Base 2007-08)

Period	CPI						Core Inflation				SPI**		WPI	
	General		Food		Non-food		NFNE*		Trimmed		YoY	MoM	YoY	MoM
	YoY	MoM	YoY	MoM	YoY	MoM	YoY	MoM	YoY	MoM				
Mar 15	2.5	0.2	0.5	0.5	3.9	0.0*	5.9	0.1	3.8	0.0*	-1.9	0.0*	-3.7	0.0*
Apr 15	2.1	1.3	0.0*	1.4	3.7	1.3	5.4	1.4	3.1	0.6	-1.6	0.4	-2.9	0.9
May 15	3.2	0.8	3.0	1.8	3.3	0.0*	4.9	0.0*	3.9	0.1	1.2	1.3	-1.8	1.1
Jun-15	3.2	0.6	3.2	1.2	3.2	0.2	4.6	0.1	3.8	0.2	1.1	1.0	-2.0	1.2
Jul-15	1.9	0.4	0.6	0.1	2.8	0.6	4.1	0.6	2.9	0.5	-0.5	0.3	-2.9	-0.4
Aug-15	1.8	0.2	0.4	0.3	2.8	0.2	4.0	0.1	2.8	0.1	-1.5	-0.2	-2.9	-0.5
Sep-15	1.3	-0.1	-0.1	-0.4	2.4	0.1	3.4	0.1	2.8	0.1	-1.3	0.5	-3.5	-0.4
Oct 15	1.6	0.5	0.5	0.4	2.4	0.5	3.4	0.6	2.8	0.4	-0.1	1.2	-2.7	0.5
Nov 15	2.7	0.6	2.2	1.2	3.2	0.2	4.0	0.1	2.9	0.2	2.1	1.0	-1.7	0.0*
Dec 15	3.2	-0.6	2.7	-1.6	3.6	0.2	4.1	0.2	2.7	0.2	2.9	-0.7	-0.4	-0.7
Jan 16	3.3	0.2	2.5	-0.6	3.9	0.8	4.3	0.9	3.0	0.6	3.1	-0.7	0.1	-0.5
Feb 16	4.0	-0.3	3.7	-0.7	4.2	0.0*	4.5	0.2	3.6	0.1	3.6	-0.5	0.6	-0.6
Mar 16	3.9	0.2	3.7	0.5	4.1	-0.1	4.7	0.2	3.8	0.2	3.5	-0.2	0.2	-0.4
Apr 16	4.2	1.6	4.7	2.4	3.8	1.0	4.4	1.1	3.8	0.6	2.9	-0.1	0.6	1.3

*NFNE is non-food non-energy, ** SPI for quintile 1. Digits 0.0* are due to rounding off.

Table 1.1 : Period Average and YoY % Changes of Indices (Base 2007-08)

Index	Averages July-April % Changes			April over April % Changes		
	2015-16	2014-15	2013-14	2015-16	2014-15	2013-14
CPI	2.79	4.81	8.69	4.17	2.11	9.18
SPI	1.44	1.86	9.78	2.91	-1.57	9.37
WPI	-1.29	0.03	8.28	0.59	-2.94	6.96

Figure 1: CPI Inflation YoY, Special Indices

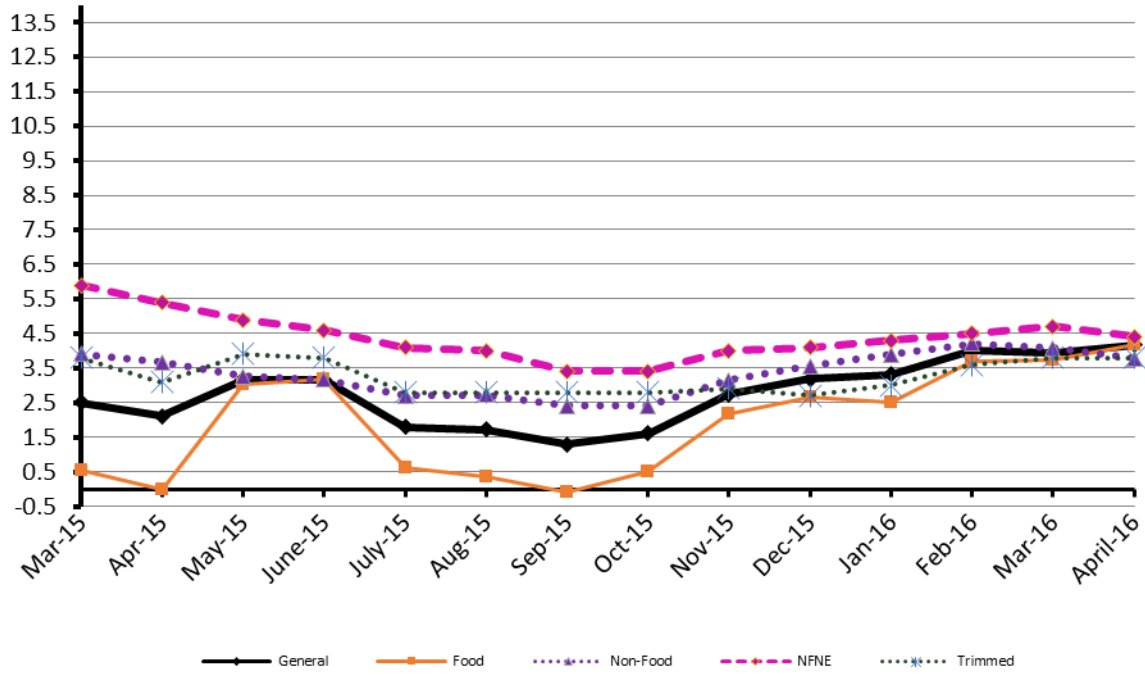
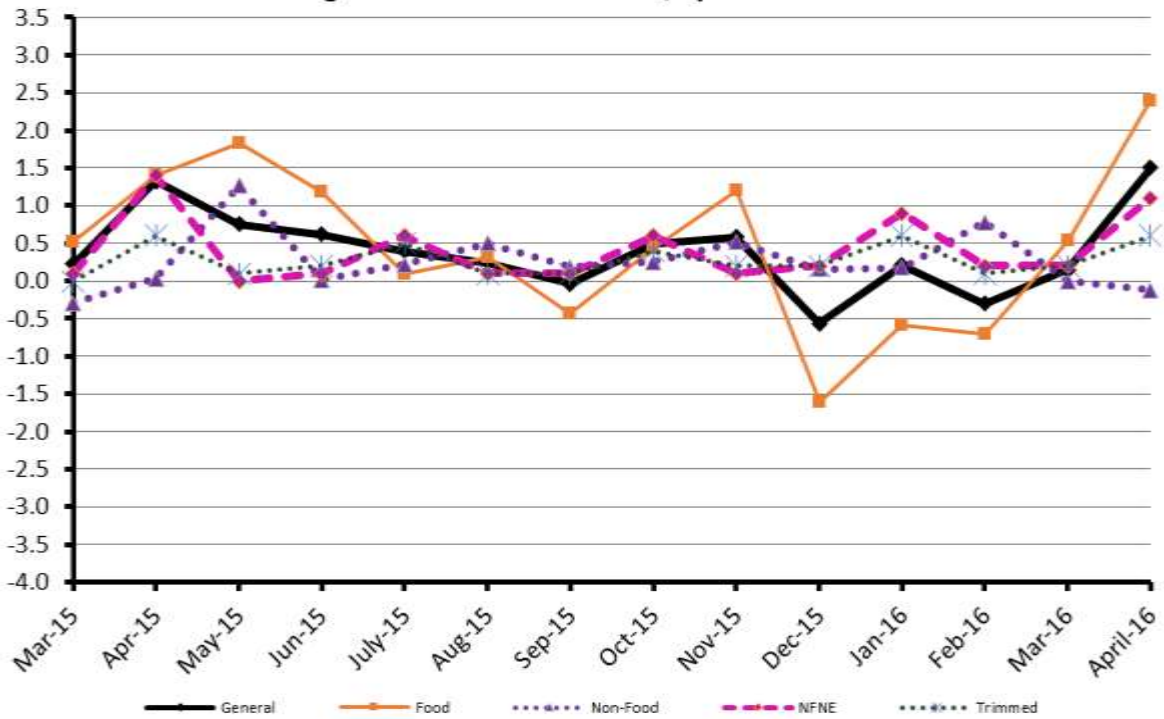


Figure 2: CPI Inflation MoM, Special Indices



II. Consumer Price Index (CPI)

The Consumer Price Index of April 2016, has increased by 1.55% over March 2016 and by 4.17% over corresponding month of the last year i.e. April 2015.

Table 2 : Consumer Price Index by Group of Commodities and Services (Base 2007-08)

No	Group	Group Weight (%)	Indices			% Change April 2016 Over		Impact (In % points) April 2016 Over	
			April 2016	March 2016	April 2015	Mar 2016	April 2015	Mar 2016	April 2015
	General	100.00	206.43	203.28	198.16	1.55	4.17	1.55	4.17
1.	Food & Non-alcoholic Bev.	34.83	221.59	216.13	214.18	2.53	3.46	0.94	1.30
	<i>Non-perishable Food Items</i>	29.84	221.60	219.27	214.02	1.06	3.54	0.34	1.14
	<i>Perishable Food Items</i>	4.99	221.58	197.35	215.16	12.28	2.98	0.59	0.16
2.	Alcoholic Bev.& Tobacco	1.41	344.10	338.77	266.65	1.57	29.05	0.04	0.55
3.	Clothing & Footwear	7.57	227.87	226.40	217.17	0.65	4.93	0.06	0.41
4.	Housing, Water, Electricity, Gas & Fuels	29.41	187.08	185.48	177.73	0.86	5.26	0.23	1.39
5.	Furnishing & Household Equipment Maintenance	4.21	220.09	219.50	211.06	0.27	4.28	0.01	0.19
6.	Health	2.19	187.29	185.68	178.21	0.87	5.10	0.02	0.10
7.	Transport	7.20	169.33	168.25	176.70	0.64	-4.17	0.04	-0.27
8.	Communication	3.22	130.77	130.74	130.29	0.02	0.37	0.00	0.01
9.	Recreation & Culture	2.02	195.68	194.71	192.74	0.50	1.53	0.01	0.03
10.	Education	3.94	221.48	210.99	209.17	4.97	5.89	0.20	0.24
11.	Restaurants & Hotels	1.23	261.89	261.80	247.74	0.03	5.71	0.00	0.09
12.	Miscellaneous	2.76	232.97	232.54	224.00	0.18	4.00	0.01	0.12

Main contributors to month-on-month and year-on-year percentage changes are given below and detail is given in Annexure A.

1. **Month-on-month** Top few commodities which varied from previous month i.e. March 2016 are given below:-

Food Items Increased: Tomatoes (60.41%), Chicken (30.75), Fresh Vegetables (14.32%), Fresh Fruit (13.42%), Gram Whole (5.71%), Pulse Mash washed (3.65%), Pulse Gram (3.58%), Besan (2.95%).

Decreased: Eggs (6.58%), Onion (5.72%) and Wheat (4.31%).

Non-food Items Increased: Education (4.97%), Medical Equipments (2.34%), Cotton Cloth (2.11%), Doctor (MBBS) Clinic Fee (2.05%), Sewing Needle (1.56%), Kerosene Oil (1.4%), Motor Fuel (1.33%) and House Rent (1.22%).

Decreased: Motor Vehicle Accessories (1.75%).

2. **Year-on-Year:** Top few commodities which varied from previous year i.e. April 2015 are given below:-

Food Items Increased: Pulse Gram (59.94%), Pulse Mash (56.19%), Besan (51.73%), Gram Whole (31.68%), Cigarettes (29.24%), Chicken (17.12%), Betel Leaves and Nuts (14.1%) Tea (13.47%), Sugar (10.38%) and Pulse Masoor (8.76%).

Decreased: Rice (12.75%), Onion (10.54%), Cooking Oil (10.09%), Eggs (10.01%), and Vegetable Ghee (4.29%).

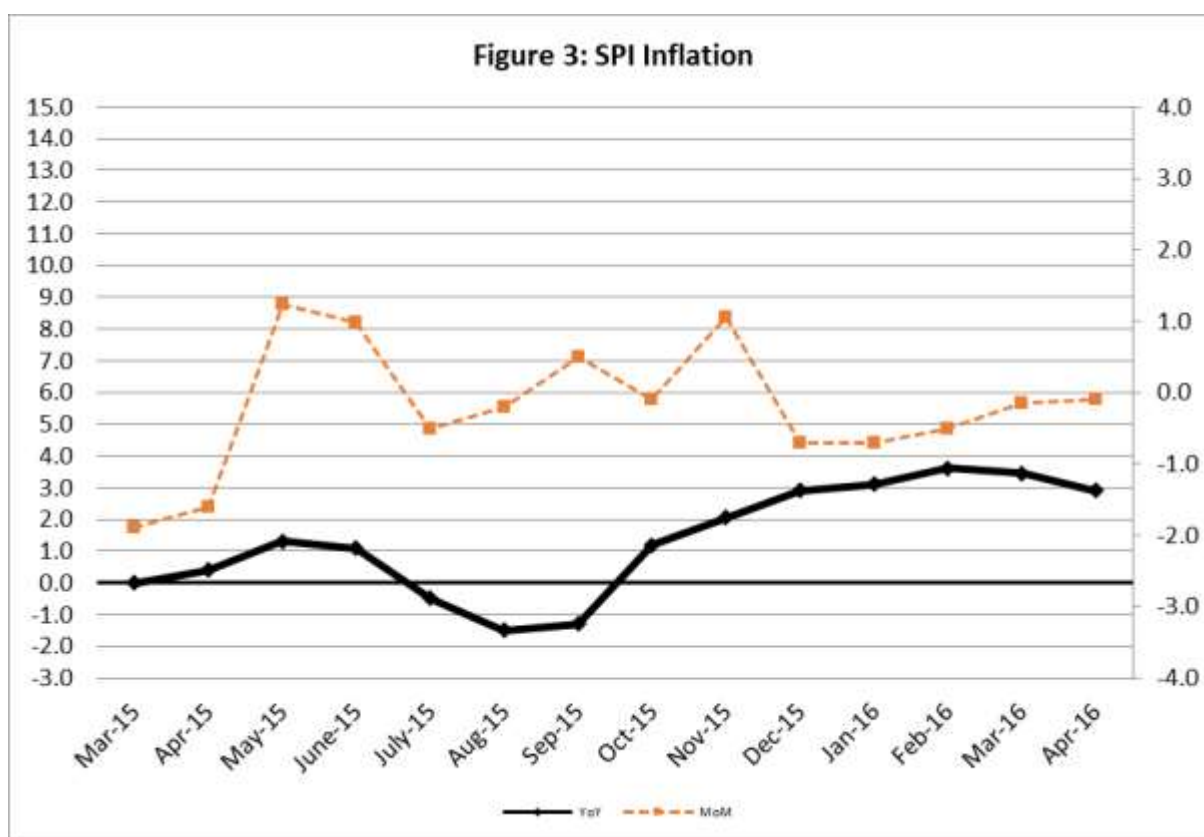
Non-food Items Increased: Gas (9.92%), Tailoring (8.39%), Household Servants (7.8%), Construction Wage Rates (7.66%), Doctor (MBBS) Clinic Fee (7.64%), Water Supply (7.46%), Readymade Garments (6.44%) and Cleaning & Laundry (6.16%).

Decreased: Motor Fuel (10.01%), Kerosene Oil (7.08%), Motor Vehicle Accessories (4.35%) and Transport Services (2.13%).

III. Sensitive Price Indicator

Quintile-wise percentage changes YoY and MoM are given below in Table 3. The series from March 2015 to April 2016 is also graphed below in Figure 3.

Table 3: Sensitive Price Indicator (Base 2007-08)					
Quintiles	Indices			% Change April 2016 over	
	April 2016	March 2016	April 2015	March 2016	April 2015
1	206.56	206.81	200.70	-0.12	2.92
2	214.12	213.97	206.77	0.07	3.55
3	215.20	214.76	209.95	0.20	2.50
4	219.78	219.04	211.37	0.34	3.98
5	216.71	215.46	208.40	0.58	3.99
Combined	215.89	215.13	208.42	0.35	3.58



IV. Wholesale Price Index

The Wholesale Price Index for April, 2016 is increased by 1.30% over March, 2016. It is increased by 0.59% over the corresponding month of the last year. YoY and MoM movements, from March, 2015 to April, 2016 are also graphed below in Figure 4.

Table 4 : Wholesale Price Index by Group of Commodities (Base 2007-08)

No.	Group	Group Weight (%)	Indices			% Change April, 2016 over		Impact (in %age points) April, 2016 over	
			April 2016	March 2016	April 2015	March 2016	April 2015	March 2016	April 2015
	General	100.00	206.87	204.22	205.65	1.30	0.59	1.30	0.59
1.	Agriculture, Forestry & Fishery Products	25.77	229.78	221.02	219.00	3.96	4.92	1.10	1.35
2.	Ores & Minerals, Electricity, Gas & Water	12.04	244.59	245.22	245.66	-0.26	-0.44	-0.04	-0.06
3.	Food Products, Beverages & Tobacco, Textiles, Apparel & Leather Products	31.11	214.90	214.66	205.98	0.11	4.33	0.04	1.35
	i. Food Products, Bev. & Tobacco	20.07	228.66	228.30	217.28	0.16	5.24	0.03	1.11
	ii. Textiles and Apparel	10.33	189.28	189.28	184.70	0.00	2.47	0.00	0.23
	iii. Leather Products	0.71	198.73	198.39	196.20	0.17	1.29	0.00	0.01
4.	Other Transportable Goods except Metal Products, Machinery & Equipment	22.37	162.91	161.42	181.06	0.92	-10.02	0.16	-1.97
5.	Metal Products, Machinery & Equipment	8.72	171.22	170.45	172.88	0.45	-0.96	0.03	-0.07

Main contributors to month-on-month and year-on-year percentage changes are given below and detail is given in Annexure B.

- Month-on-month** Top few commodities which varied from previous month i.e. March, 2016 are given below:-

Increased: Poultry (34.04%), Vegetables (32.29%), Furnace oil (13.90%), Fish (10.03%), Fresh Fruits (9.03%), Other cereal flour (6.22%), Maize (5.98%), Pulses (4.89%), Steel bars & sheets (3.40%), Jowar (2.89%), Medicines (2.69%), Motor spirit (2.40%) and Vegetable ghee (2.09%).

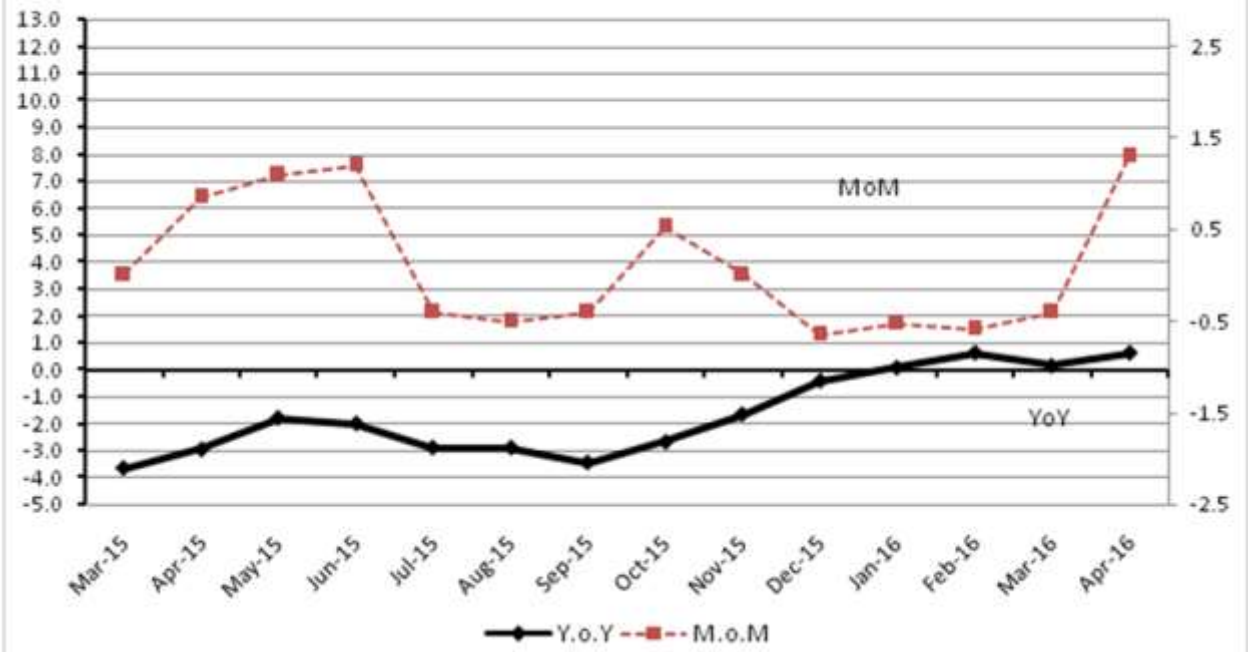
Decreased: Potatoes (7.67%), Eggs (6.47%), Wheat (5.29%), Coal (4.44%) and Wheat flour (2.48%).

- Year-on-year** Top few commodities which varied from previous year i.e. April, 2015 are given below:-

Increased: Other Cereal Flour (62.75%), Woolen carpets (37.39%), Tobacco Products (34.25%), Fish (30.07%), Pulses (23.86%), Poultry (22.26%), Cotton Seeds (18.25%), Sugar Confectionary (16.18%), Coffee & Tea (15.09%), Matches (13.56%), Oil Cakes (11.35%) and Medicines (10.88%)..

Decreased: Furnace oil (38.14%), Kerosene oil (35.67%), Coal (24.56%), Diesel oil (23.57%), Stimulant & Spice Crops (18.30%), Motor spirit (13.49%), Rice (12.71%) and Eggs (11.56%).

Figure 4: WPI Inflation



Annexure A: Consumer Price Index Numbers by Commodity Groups & Commodities (2007-08=100)

Item and Specification	Weight	Index Numbers			% Change in Apr 2016 over	
		Apr 16	Mar 16	Apr 15	Mar 2016	Apr 2015
General	100.0000	206.43	203.28	198.16	+ 1.55	+ 4.17
Food and non-alcoholic Bevera	34.8343	221.59	216.13	214.18	+ 2.53	+ 3.46
01 Wheat	0.3477	199.84	208.84	201.58	- 4.31	- 0.86
02 Wheat Flour	4.1648	213.80	216.95	213.53	- 1.45	+ 0.13
03 Wheat Product	0.0959	214.44	212.36	212.35	+ 0.98	+ 0.98
04 Besan	0.1500	266.21	258.58	175.45	+ 2.95	+ <u>51.73</u>
05 Rice	1.5821	155.53	157.09	178.25	- 0.99	- 12.75
06 Cereals	0.1563	248.02	248.03	239.89	+ 0.00	+ 3.39
07 Bakery & Confectionary	1.1550	212.32	212.37	207.72	- 0.02	+ 2.21
08 Nimco	0.4574	245.22	244.62	238.93	+ 0.25	+ 2.63
09 Meat	2.4303	260.33	260.17	246.33	+ 0.06	+ 5.68
10 Chicken	1.3596	221.51	169.42	189.13	+ 30.75	+ 17.12
11 Fish	0.2970	220.79	216.71	215.34	+ 1.88	+ 2.53
12 Milk Fresh	6.6800	260.36	259.52	250.46	+ 0.32	+ 3.95
13 Milk Products	0.6338	251.36	251.48	243.32	- 0.05	+ 3.30
14 Milk Powder	0.1129	235.13	235.07	225.93	+ 0.03	+ 4.07
15 Eggs	0.4555	157.99	169.12	175.57	- 6.58	- 10.01
16 Mustard Oil	0.0952	153.28	155.95	153.75	- 1.71	- 0.31
17 Cooking Oil	1.7538	132.28	132.58	147.12	- 0.23	- 10.09
18 Vegetable Ghee	2.0714	137.14	136.29	143.28	+ 0.62	- 4.29
19 Dry Fruits	0.2543	263.06	261.11	250.60	+ 0.75	+ 4.97
20 Fresh Fruits	1.8649	251.28	221.54	232.24	+ 13.42	+ 8.20
21 Pulse Masoor	0.2712	204.86	202.97	188.36	+ 0.93	+ 8.76
22 Pulse Moong	0.2336	300.71	298.42	311.10	+ 0.77	- 3.34
23 Pulse Mash (Washed)	0.2098	361.70	348.96	231.57	+ 3.65	+ <u>56.19</u>
24 Pulse Gram	0.2361	276.99	267.42	173.18	+ 3.58	+ <u>59.94</u>
25 Gram Whole	0.1616	234.94	222.26	178.42	+ 5.71	+ 31.68
26 Beans	0.0269	233.02	231.25	232.45	+ 0.77	+ 0.25
27 Potatoes	0.4889	124.66	125.41	128.90	- 0.60	- 3.29
28 Onion	0.5530	234.53	248.77	262.15	- 5.72	- 10.54
29 Tomatoes	0.4609	150.00	93.51	145.03	+ <u>60.41</u>	+ 3.43
30 Fresh Vegetables	1.6232	232.56	203.43	225.41	+ 14.32	+ 3.17
31 Sugar	1.0445	226.87	223.13	205.53	+ 1.68	+ 10.38
32 Gur	0.0220	264.70	267.43	256.44	- 1.02	+ 3.22
33 Honey	0.0446	307.78	307.12	303.39	+ 0.21	+ 1.45
34 SweetMeat	0.2483	239.96	239.96	234.89	+ 0.00	+ 2.16
35 Beverages	1.1990	217.77	215.86	207.94	+ 0.88	+ 4.73
36 Jam, Tomato Ketchup & Pickles	0.2454	213.44	211.82	207.59	+ 0.76	+ 2.82
37 Condiments	0.2656	263.03	261.12	257.07	+ 0.73	+ 2.32
38 Spices	0.5441	239.67	238.67	234.74	+ 0.42	+ 2.10
39 Tea	0.8377	257.15	261.29	226.62	- 1.58	+ 13.47
Alcoholic Beverages, Tobacco	1.4135	344.10	338.77	266.65	+ 1.57	+ 29.05
40 Cigarettes	1.3906	345.88	340.48	267.63	+ 1.59	+ 29.24
41 Betel Leaves & Nuts	0.0229	236.22	234.38	207.03	+ 0.79	+ 14.10
Clothing and footwear	7.5708	227.87	226.40	217.17	+ 0.65	+ 4.93
42 Cotton Cloth	1.7286	223.11	218.51	211.44	+ 2.11	+ 5.52
43 Woolen Cloth	0.8759	243.14	243.45	234.13	- 0.13	+ 3.85
44 Readymade Garments	0.9739	234.60	232.44	220.40	+ 0.93	+ 6.44
45 Woolen Readymade Garments	0.3964	252.74	252.77	240.86	- 0.01	+ 4.93
46 Hosiery	0.5094	240.25	239.97	229.28	+ 0.12	+ 4.78
47 Dopatta	0.4412	239.49	240.45	232.30	- 0.40	+ 3.10
48 Cleaning and Laundry	0.2110	252.29	252.25	237.64	+ 0.02	+ 6.16
49 Tailoring	0.8840	292.96	292.19	270.28	+ 0.26	+ 8.39
50 Footwear	1.5504	166.17	165.51	164.53	+ 0.40	+ 1.00
Housing, water, Elec., Gas an	29.4149	187.08	185.48	177.73	+ 0.86	+ 5.26
51 House Rent	21.8149	176.44	174.32	166.88	+ 1.22	+ 5.73
52 Construction Input Items	0.5623	242.89	241.67	238.88	+ 0.50	+ 1.68
53 Construction Wage Rates	0.3331	226.24	225.24	210.14	+ 0.44	+ 7.66
54 Water Supply	0.4971	161.10	161.10	149.92	+ 0.00	+ 7.46
55 Electricity	4.3985	238.10	238.10	231.52	+ 0.00	+ 2.84
56 Gas	1.5756	158.08	158.08	143.81	+ 0.00	+ 9.92
57 Kerosene Oil	0.0057	194.05	191.37	208.84	+ 1.40	- 7.08

Annexure A: Consumer Price Index Numbers by Commodity Groups & Commodities (2007-08=100)

Item and Specification	Weight	Index Numbers			% Change in Apr 2016 over	
		Apr 16	Mar 16	Apr 15	Mar 2016	Apr 2015
58 Firewood Whole	0.2277	283.25	283.78	274.81	- 0.19	+ 3.07
<i>Furnishing and household equi</i>	4.2082	220.09	219.50	211.06	+ 0.27	+ 4.28
59 Furniture	0.3315	210.33	210.00	202.69	+ 0.16	+ 3.77
60 Household Textiles	0.6489	219.15	219.62	207.73	- 0.21	+ 5.50
61 Household Equipment	0.5936	177.64	176.51	173.79	+ 0.64	+ 2.22
62 Utensils	0.3212	222.55	221.38	212.94	+ 0.53	+ 4.51
63 Plastic Products	0.2547	206.90	206.73	201.48	+ 0.08	+ 2.69
64 Washing Soaps & Detergents	0.7893	226.13	225.20	225.12	+ 0.41	+ 0.45
65 Sewing Needle & Dr Cell	0.1496	208.24	205.05	198.97	+ 1.56	+ 4.66
66 Household Servant	1.0432	246.17	245.77	228.35	+ 0.16	+ 7.80
67 Marriage Hall Charges	0.0762	238.96	238.96	231.83	+ 0.00	+ 3.08
<i>Health</i>	2.1868	187.29	185.68	178.21	+ 0.87	+ 5.10
68 Drugs & Medicines	1.2667	152.83	152.54	148.33	+ 0.19	+ 3.03
69 Medical Equipments	0.0080	232.59	227.28	225.36	+ 2.34	+ 3.21
70 Doctor (MBBS) Clinic Fee	0.5904	260.45	255.23	241.97	+ 2.05	+ 7.64
71 Medical Tests	0.3217	187.54	187.50	177.69	+ 0.02	+ 5.54
<i>Transport</i>	7.2023	169.33	168.25	176.70	+ 0.64	- 4.17
72 Motor Vehicles	0.6630	165.22	165.19	163.41	+ 0.02	+ 1.11
73 Motor Vehicle Accessories	0.2439	216.66	220.51	226.51	- 1.75	- 4.35
74 Motor Fuel	3.0269	135.46	133.68	150.53	+ 1.33	- 10.01
75 Mechanical Service	0.4552	223.78	223.78	212.78	+ 0.00	+ 5.17
76 Motor Vehicle Tax	0.1099	210.18	210.18	210.18	+ 0.00	+ 0.00
77 Transport Services	2.7034	193.15	191.93	197.35	+ 0.64	- 2.13
<i>Communication</i>	3.2198	130.77	130.74	130.29	+ 0.02	+ 0.37
78 Postal Services	0.0662	238.97	237.90	227.44	+ 0.45	+ 5.07
79 Communication & Apparatus	3.1536	128.50	128.49	128.25	+ 0.01	+ 0.19
<i>Recreation and culture</i>	2.0227	195.68	194.71	192.74	+ 0.50	+ 1.53
80 Recreation & Culture	0.8634	129.09	128.83	128.25	+ 0.20	+ 0.65
81 Text Books	0.5706	292.33	290.62	290.10	+ 0.59	+ 0.77
82 Newspapers	0.1934	175.49	175.49	175.42	+ 0.00	+ 0.04
83 Stationery	0.3953	211.49	209.56	201.55	+ 0.92	+ 4.93
<i>Education</i>	3.9431	221.48	210.99	209.17	+ 4.97	+ 5.89
84 Education	3.9431	221.48	210.99	209.17	+ 4.97	+ 5.89
<i>Restaurants and hotels</i>	1.2286	261.89	261.80	247.73	+ 0.03	+ 5.72
85 Readymade Food	1.2286	261.89	261.80	247.73	+ 0.03	+ 5.72
<i>Misc. goods and services</i>	2.7550	232.97	232.55	223.99	+ 0.18	+ 4.01
86 Personal Care	1.4935	213.72	213.45	207.29	+ 0.13	+ 3.10
87 Cosmetics	0.3853	199.01	198.43	190.49	+ 0.29	+ 4.47
88 Blades	0.0322	195.05	195.05	185.88	+ 0.00	+ 4.93
89 Personal Equipments	0.8440	284.00	283.36	270.30	+ 0.23	+ 5.07

Annexure B: Wholesale Price Indices by Major Groups & Commodities

(2007-08=100)

Item and Specification	Weight	Index Numbers			% Change in Apr 2016 over			
		Apr 16	Mar 16	Apr 15	Mar 2016	Apr 2015		
General	100.0000	206.87	204.22	205.65	+	1.30	+	0.59
Agriculture Forestry & Fisher	25.7674	229.78	221.02	219.00	+	3.96	+	4.92
001 Wheat	0.6297	207.11	218.68	206.14	-	5.29	+	0.47
002 Maize	0.6764	205.56	193.96	188.60	+	5.98	+	8.99
003 Rice	2.4413	142.90	143.85	163.71	-	0.66	-	12.71
004 Sorghum / Jowar	0.0214	286.45	278.40	292.62	+	2.89	-	2.11
005 Millet / Bajra	0.0374	187.00	184.22	172.47	+	1.51	+	8.42
006 Vegetables	1.2441	277.16	209.51	262.99	+	32.29	+	5.39
007 Fresh Fruits	1.5144	267.02	244.90	242.95	+	9.03	+	9.91
008 Dry Fruits	0.2478	248.97	248.22	237.25	+	0.30	+	4.94
009 Cotton Seeds	1.1511	254.81	253.39	215.48	+	0.56	+	18.25
010 Other Oil Seeds	0.0722	159.83	156.93	157.14	+	1.85	+	1.71
011 Edible Roots / Potatoes	0.2540	104.08	112.72	115.50	-	7.67	-	9.89
012 Stimulant & Spice Crops	0.1634	234.41	235.21	286.93	-	0.34	-	18.30
013 Pulses	0.4901	259.57	247.46	209.56	+	4.89	+	23.86
014 Sugar Crops	1.0725	286.29	286.29	286.29	+	0.00	+	0.00
015 Fibre Crops	5.3169	174.57	172.25	172.53	+	1.35	+	1.18
016 Unmanufactured Tobacco	0.0742	230.61	230.02	217.50	+	0.26	+	6.03
017 Poultry	0.5633	231.81	172.94	189.61	+	34.04	+	22.26
018 Raw Milk from Bovine Animals	7.0279	256.11	255.42	251.69	+	0.27	+	1.76
019 Eggs	0.5034	150.83	161.26	170.54	-	6.47	-	11.56
020 Raw Animal Materials / Wool	0.0351	175.99	176.96	177.10	-	0.55	-	0.63
021 Hides & Fur Skins, Raw	0.4834	151.73	150.63	159.72	+	0.73	-	5.00
022 Fuel Wood in Logs	0.0179	264.77	266.30	259.53	-	0.57	+	2.02
023 Fish Live Fresh or Chilled	1.7295	369.26	335.61	283.89	+	10.03	+	30.07
Ores/Minerals, Elec., Gas & W	12.0389	244.59	245.22	245.66	-	0.26	-	0.44
024 Coal not Agglomerated	0.7508	168.63	176.47	223.53	-	4.44	-	24.56
025 Natural Gas Liquified	5.7385	208.04	208.35	200.74	-	0.15	+	3.64
026 Salt & Pure Sodium Chloride	0.0584	252.31	252.31	248.84	+	0.00	+	1.39
027 Electrical Energy	5.4912	293.09	293.09	295.61	+	0.00	-	0.85
Food, Beverages, Tobacco, Textil	31.1122	214.90	214.66	205.98	+	0.11	+	4.33
Food Products, Beverages &	20.0718	228.66	228.30	217.28	+	0.16	+	5.24
028 Meat of Animals	3.4559	269.28	268.99	260.64	+	0.11	+	3.31
029 Vegetables & Fruit Juice	0.0058	202.69	201.36	199.28	+	0.66	+	1.71
030 Dried Fruits & Nuts	0.1733	245.68	250.38	228.25	-	1.88	+	7.64
031 Fruit Juices	0.3880	176.37	175.99	174.06	+	0.22	+	1.33
032 Vegetable Oils Refined	1.9242	150.87	148.47	155.23	+	1.62	-	2.81
033 Vegetable Ghee	1.5632	121.50	119.01	124.33	+	2.09	-	2.28
034 Oil Cakes	0.9611	222.77	224.87	200.07	-	0.93	+	11.35
035 Processed Liquid Milk	4.4437	248.90	247.57	251.52	+	0.54	-	1.04
036 Milk & Cream in Solid Form	0.0316	219.24	219.09	221.70	+	0.07	-	1.11
037 Ice Cream	0.0047	229.62	225.40	219.91	+	1.87	+	4.42
038 Dairy Products N.E.C	0.0117	247.85	248.13	243.80	-	0.11	+	1.66
039 Wheat Flour	2.3034	195.65	200.63	194.97	-	2.48	+	0.35
040 Other Cereal Flour	0.0604	239.21	225.20	146.98	+	6.22	+	62.75
041 Sugar Refined	1.7975	240.36	237.73	220.03	+	1.11	+	9.24
042 Chocolate	0.0139	101.06	101.06	99.19	+	0.00	+	1.89
043 Sugar Confectionary	0.0738	118.83	118.83	102.28	+	0.00	+	16.18
044 Coffee & Tea	0.7303	234.40	238.86	203.67	-	1.87	+	15.09
045 Spices	0.1449	189.67	189.77	189.90	-	0.05	-	0.12
046 Other Food Products	0.0336	292.52	292.52	294.23	+	0.00	-	0.58
047 Mineral Water	0.0207	194.37	194.37	187.86	+	0.00	+	3.47
048 Beverages	0.6303	172.44	172.44	171.62	+	0.00	+	0.48
049 Tobacco Products	1.2998	390.01	387.30	290.52	+	0.70	+	34.25
Textiles & Apparels	10.3289	189.28	189.28	184.71	+	0.00	+	2.47
050 Cotton Yarn	5.2491	173.67	174.54	170.12	-	0.50	+	2.09
051 Nylon Yarn	0.1719	147.08	147.08	150.22	+	0.00	-	2.09
052 Blended Yarn	0.1689	176.66	175.44	182.72	+	0.70	-	3.32
053 Woven Fabrics	0.0128	275.66	275.66	258.39	+	0.00	+	6.68

Annexure B: Wholesale Price Indices by Major Groups & Commodities

(2007-08=100)

Item and Specification	Weight	Index Numbers			% Change in Apr 2016 over		
		Apr 16	Mar 16	Apr 15	Mar 2016	Apr 2015	
054 Cotton Fabrics	0.6343	206.45	204.95	201.34	+	0.73	+ 2.54
055 Other Fabrics	1.1016	220.25	218.24	212.61	+	0.92	+ 3.59
056 Silk & Reyon Fabrics	0.7350	188.44	186.80	181.33	+	0.88	+ 3.92
057 Towels	0.1235	267.20	267.20	265.62	+	0.00	+ 0.59
058 Blankets	0.0029	243.93	243.93	235.86	+	0.00	+ 3.42
059 Bed Sheets	0.0913	256.29	256.29	256.29	+	0.00	+ 0.00
060 Quilts	0.0019	198.00	201.47	196.84	-	1.72	+ 0.59
061 Woolen Carpets	0.0383	181.55	181.55	132.14	+	0.00	+ 37.39
062 Synthetic Carpets	0.0566	129.25	129.25	126.27	+	0.00	+ 2.36
063 Hosiery Products	0.8832	222.52	222.52	218.08	+	0.00	+ 2.04
064 Readymade Garments	1.0576	193.27	193.27	186.77	+	0.00	+ 3.48
Leather Products	0.7115	198.73	198.39	196.20	+	0.17	+ 1.29
065 Leather Without Hair	0.2973	221.97	221.97	215.06	+	0.00	+ 3.21
066 Other Leather N.E.C	0.2567	207.31	207.31	212.39	+	0.00	- 2.39
067 Footwears	0.1575	140.89	139.36	134.22	+	1.10	+ 4.97
Other Transportable Goods	22.3659	162.91	161.42	181.06	+	0.92	- 10.02
068 Timber	0.0165	220.36	220.36	202.05	+	0.00	+ 9.06
069 Printing Paper	0.4279	161.82	161.82	162.72	+	0.00	- 0.55
070 Hard Board	0.1579	197.92	197.92	197.92	+	0.00	+ 0.00
071 Coke	0.2797	163.45	163.45	163.45	+	0.00	+ 0.00
072 Motor Spirit	1.5336	108.54	106.00	125.47	+	2.40	- 13.49
073 Diesel Oil	5.2664	136.30	134.76	178.33	+	1.14	- 23.57
074 Kerosine Oil	0.2151	115.11	115.11	178.93	+	0.00	- 35.67
075 Furnace Oil	3.2664	58.58	51.43	94.70	+	13.90	- 38.14
076 Mobil Oil	0.7114	196.00	196.00	200.74	+	0.00	- 2.36
077 Chemicals	1.7720	182.61	182.47	195.03	+	0.08	- 6.37
078 Dyeing Material	0.1539	146.55	146.55	146.55	+	0.00	+ 0.00
079 Fertilizers	2.8657	262.47	264.83	272.54	-	0.89	- 3.69
080 Pesticides	0.2763	312.37	312.37	293.74	+	0.00	+ 6.34
081 Insecticides	0.1276	135.79	133.20	143.34	+	1.94	- 5.27
082 Paints & Varnishes	0.1916	295.36	295.36	291.69	+	0.00	+ 1.26
083 Medicines	1.1428	160.98	156.79	145.19	+	2.67	+ 10.88
084 Soaps & Detergents	0.8168	182.24	182.03	178.14	+	0.12	+ 2.30
085 Auto Tyres	0.2703	184.65	184.65	191.36	+	0.00	- 3.51
086 Plastic Products	0.4550	226.58	226.58	222.47	+	0.00	+ 1.85
087 Glass sheets	0.2089	231.30	231.30	228.76	+	0.00	+ 1.11
088 Other Glass Articles	0.1635	243.63	243.63	243.63	+	0.00	+ 0.00
089 Ceramics & Sanitary Fixture	0.0244	227.51	227.51	219.25	+	0.00	+ 3.77
090 Bricks, Blocks & Tiles	0.1566	217.83	217.05	209.76	+	0.36	+ 3.85
091 Cement	1.8145	205.87	206.40	206.86	-	0.26	- 0.48
092 Bed Foam	0.0006	167.67	167.67	156.67	+	0.00	+ 7.02
093 Matches	0.0505	162.62	162.62	143.20	+	0.00	+ 13.56
Metal Product, Machinery & Eq	8.7156	171.22	170.45	172.88	+	0.45	- 0.96
094 Pig Iron	0.0593	128.97	128.97	128.97	+	0.00	+ 0.00
095 Steel Bar & Sheets	1.4022	127.90	123.70	140.03	+	3.40	- 8.66
096 Pipe Fittings	0.0780	193.06	193.06	191.94	+	0.00	+ 0.58
097 Steel Products	0.3879	176.99	176.80	173.88	+	0.11	+ 1.79
098 Engines & Motors	0.0046	109.24	109.24	109.07	+	0.00	+ 0.16
099 Vacuum Pumps	0.0155	114.95	114.95	115.39	+	0.00	- 0.38
100 Air Conditioners	0.0049	201.18	201.18	197.69	+	0.00	+ 1.77
101 Cultivators	0.0551	219.76	219.76	219.76	+	0.00	+ 0.00
102 Chuff Cutter	0.1293	149.20	149.20	149.20	+	0.00	+ 0.00
103 Tractors	0.0028	205.43	205.43	214.54	+	0.00	- 4.25
104 Lathe Machines	0.0525	208.81	208.81	208.81	+	0.00	+ 0.00
105 Concrete Mixture	0.0107	138.83	138.83	138.83	+	0.00	+ 0.00
106 Fridge, WashM, SewM, Fans, Iron	1.1645	200.02	199.37	198.20	+	0.33	+ 0.92
107 Electric Wires	0.0912	195.19	195.19	190.87	+	0.00	+ 2.26
108 Lighting Equipments	1.4431	167.30	167.30	168.19	+	0.00	- 0.53
109 Radio & Television	0.1843	126.49	126.49	126.49	+	0.00	+ 0.00
110 Motor Vehicles	0.0244	185.25	185.25	183.03	+	0.00	+ 1.21
111 Motorcycles	0.2570	125.89	125.89	125.89	+	0.00	+ 0.00
112 Bicycles	3.3483	185.63	185.63	185.63	+	0.00	+ 0.00