



# Monthly Review on Price Indices



**January, 2016**  
**(Base 2007-08)**

**Government of Pakistan**  
**Statistics Division**  
**Pakistan Bureau of Statistics**  
**Islamabad**



## Inflation in Brief

1. CPI inflation, General increased by 3.3% on year-on-year basis in January 2016 as compared to an increase 3.2% in the previous month and 3.9% in January 2015. On month-on-month basis, it increased by 0.2% in January 2016 as compared to decrease of 0.6% in the previous month and increase of 0.1% in January 2015.
2. Core inflation measured by non-food non-energy CPI (Core NFNE) increased by 4.3% on (YoY) basis in January 2016 as compared to increase 4.1% in the previous month and 6.4% in January 2015. On (MoM) basis, it increased by 0.9% in January 2016 as compared to increase of 0.2% in the previous month and 0.7% in January 2015.
3. Core inflation, measured by 20% weighted trimmed mean CPI (Core Trimmed) increased by 3.0% on (YoY) basis in January 2016 as compared to 2.7% in the previous month and by 4.8% in January 2015. On (MoM) basis, it increased by 0.6% in January 2016 as compared to increase of 0.2% in the previous month and 0.3% in January 2015.
4. SPI inflation on YoY increased by 3.1% in January 2016 as compared to increase of 2.9% a month earlier and an increase of 1.1% in January 2015. On MoM basis, it decreased by 0.7% in January 2016 as compared to a decrease of 0.7% a month earlier and decreases of 0.9% in January 2015.
5. WPI inflation on YoY basis increased by 0.1% in January 2016 as compared to decrease of 0.4% a month earlier and a decrease of 2.4% in January 2015. WPI inflation on MoM basis decreased by 0.5% in January 2016 as compared to decrease of 0.7% a month earlier and decrease of 1.0% in January 2015.
6. Figures 1 and 2 show graphically the data of Table 1. Table 1.1 shows "Period Average" and "YoY" percent changes in indices of three years.

**Table 1: Inflation (%) (Base 2007-08)**

Period	CPI						Core Inflation				SPI**		WPI	
	General		Food		Non-food		NFNE*		Trimmed		YoY	MoM	YoY	MoM
	YoY	MoM	YoY	MoM	YoY	MoM	YoY	MoM	YoY	MoM				
Dec 14	4.3	-1.0	3.4	-2.1	4.9	-0.2	6.7	0.1	5.2	0.0	0.8	-1.5	-0.9	-1.9
Jan 15	3.9	0.1	3.0	-0.5	4.5	0.5	6.4	0.7	4.8	0.3	1.1	-0.9	-2.4	-1.0
Feb 15	3.2	-0.9	2.1	-1.8	4.0	-0.3	6.2	0.0	4.2	-0.2	0.2	-1.0	-3.4	-1.1
Mar 15	2.5	0.2	0.5	0.5	3.9	0.0	5.9	0.1	3.8	0.0	-1.9	0.0	-3.7	0.0 <sup>3</sup>
Apr 15	2.1	1.3	0.0	1.4	3.7	1.3	5.4	1.4	3.1	0.6	-1.6	0.4	-2.9	0.9
May 15	3.2	0.8	3.0	1.8	3.3	0.0	4.9	0.0	3.9	0.1	1.2	1.3	-1.8	1.1
Jun-15	3.2	0.6	3.2	1.2	3.2	0.2	4.6	0.1	3.8	0.2	1.1	1.0	-2.0	1.2
Jul-15	1.9	0.4	0.6	0.1	2.8	0.6	4.1	0.6	2.9	0.5	-0.5	0.3	-2.9	-0.4
Aug-15	1.8	0.2	0.4	0.3	2.8	0.2	4.0	0.1	2.8	0.1	-1.5	-0.2	-2.9	-0.5
Sep-15	1.3	-0.1	-0.1	-0.4	2.4	0.1	3.4	0.1	2.8	0.1	-1.3	0.5	-3.5	-0.4
Oct 15	1.6	0.5	0.5	0.4	2.4	0.5	3.4	0.6	2.8	0.4	-0.1	1.2	-2.7	0.5
Nov 15	2.7	0.6	2.2	1.2	3.2	0.2	4.0	0.1	2.9	0.2	2.1	1.0	-1.7	0.0 <sup>4</sup>
Dec 15	3.2	-0.6	2.7	-1.6	3.6	0.2	4.1	0.2	2.7	0.2	2.9	-0.7	-0.4	-0.7
Jan 16	3.3	0.2	2.5	-0.6	3.9	0.8	4.3	0.9	3.0	0.6	3.1	-0.7	0.1	-0.5

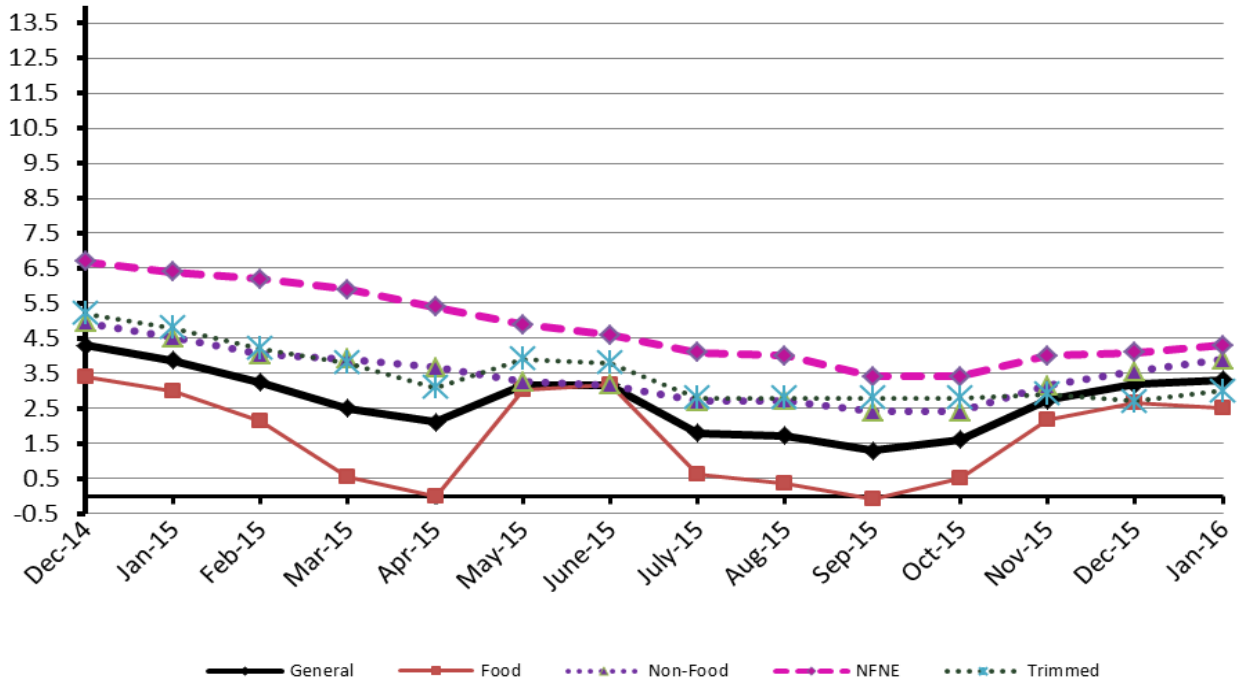
\*NFNE is non-food non-energy, \*\* SPI for quintile 1 <sup>1</sup> Actual figure is -0.03, displayed in rounded figure

<sup>2</sup>Actual figure is 0.01, <sup>3</sup>Actual figure is 0.01 displayed in rounded figure, <sup>4</sup>Actual figure is 0.01 displayed in rounded figure

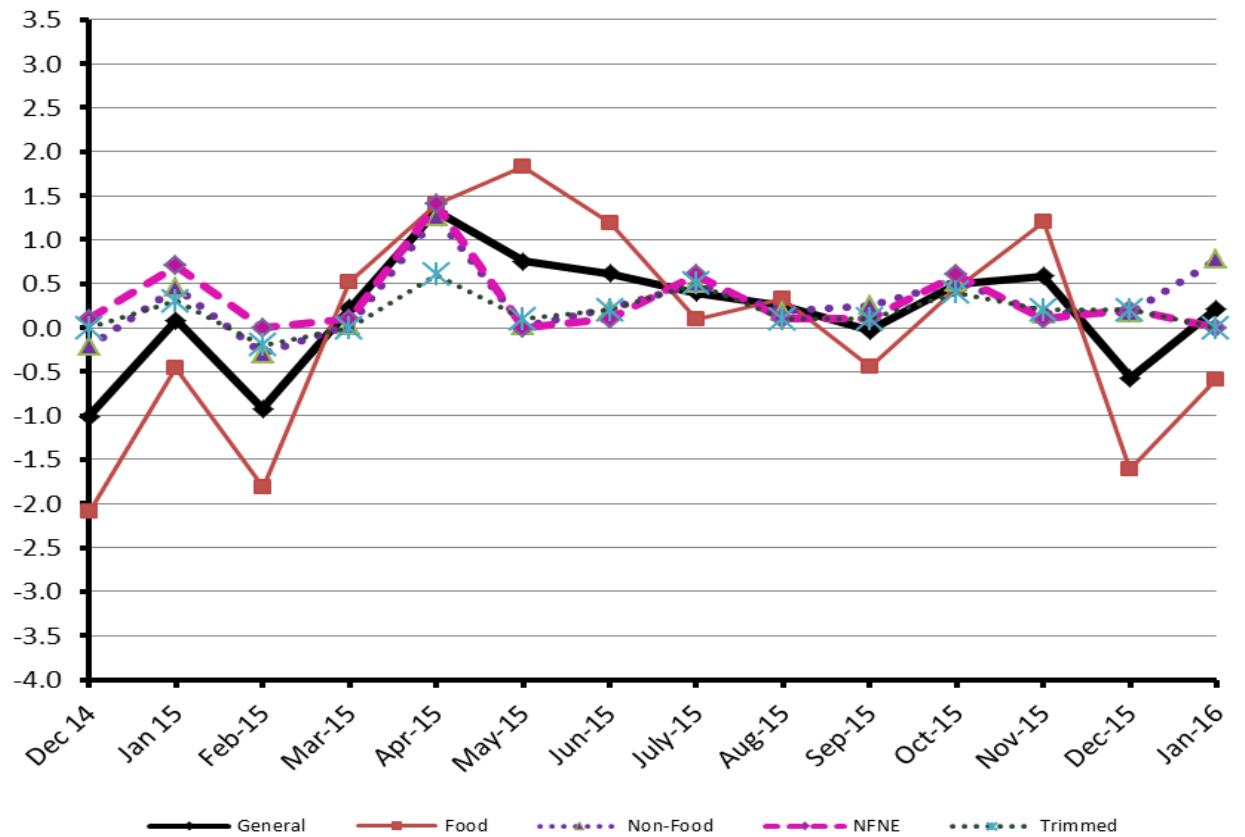
**Table 1.1 : Period Average and YoY % Changes of Indices (Base 2007-08)**

Index	Averages July-Jan % Changes			Jan over Jan % Changes		
	2015-16	2014-15	2013-14	2015-16	2014-15	2013-14
CPI	2.26	5.77	8.75	3.32	3.88	7.91
SPI	0.65	3.14	10.29	3.12	1.13	7.70
WPI	-2.02	1.48	8.67	0.08	-2.42	8.11

**Figure 1: CPI Inflation YoY, Special Indices**



**Figure 2: CPI Inflation MoM, Special Indices**



## II. Consumer Price Index (CPI)

The Consumer Price Index of January , 2016 has increased by 0.21% over December 2015 and increased by 3.32% over corresponding month of the last year, i.e. January 2015.

**Table 2 : Consumer Price Index by Group of Commodities and Services (Base 2007-08)**

No	Group	Group Weight (%)	Indices			% Change Jan 2016 Over		Impact (In % points) Jan 2016 Over	
			Jan 2016	Dec 2015	Jan 2015	Dec 2015	Jan 2015	Dec 2015	Jan 2015
	General	<b>100.00</b>	<b>203.49</b>	<b>203.06</b>	<b>196.95</b>	<b>0.21</b>	<b>3.32</b>	<b>0.21</b>	<b>3.32</b>
1.	Food & Non-alcoholic Bev.	34.83	216.71	218.28	214.11	-0.72	1.21	-0.27	0.46
	<i>Non-perishable Food Items</i>	<i>29.84</i>	<i>220.67</i>	<i>219.67</i>	<i>216.92</i>	<i>0.46</i>	<i>1.73</i>	<i>0.15</i>	<i>0.57</i>
	<i>Perishable Food Items</i>	<i>4.99</i>	<i>193.08</i>	<i>209.95</i>	<i>197.34</i>	<i>-8.04</i>	<i>-2.16</i>	<i>-0.41</i>	<i>-0.11</i>
2.	Alcoholic Bev.& Tobacco	1.41	337.14	334.67	266.62	0.74	26.45	0.02	0.51
3.	Clothing & Footwear	7.57	224.36	223.65	214.32	0.32	4.68	0.03	0.39
4.	Housing, Water, Electricity, Gas & Fuels	29.41	185.36	182.69	176.51	1.46	5.01	0.39	1.32
5.	Furnishing & Household Equipment Maintenance	4.21	217.23	216.78	209.37	0.21	3.75	0.01	0.17
6.	Health	2.19	181.45	180.83	176.97	0.34	2.53	0.01	0.05
7.	Transport	7.20	177.96	177.69	181.22	0.15	-1.80	0.01	-0.12
8.	Communication	3.22	130.61	130.56	130.13	0.04	0.37	0.00	0.01
9.	Recreation & Culture	2.02	193.80	193.66	189.63	0.07	2.20	0.00	0.04
10.	Education	3.94	209.36	209.31	192.41	0.02	8.81	0.00	0.34
11.	Restaurants & Hotels	1.23	257.11	255.77	244.90	0.52	4.99	0.01	0.08
12.	Miscellaneous	2.76	227.33	226.28	221.30	0.46	2.72	0.01	0.08

Main contributors to month-on-month and year-on-year percentage changes are given below and detail is given in Annexure A.

- Month-on-month** Top few commodities which varied from previous month i.e. December 2015 are given below:-

**Food Items Increased:** Sugar (5.98%), Fresh Fruits (5.24%), Chicken (3.03%), Pulse Mash (2.89%), Tea (1.71%), Fish (1.23%), Gram Whole (1.13%) and Dry Fruits (1.12%).

**Decreased:** Tomatoes (38.21%), Potatoes (29.40%), Onions (14.17%), Vegetables (5.38%), Eggs (1.47%) and Cooking Oil (1.12%).

**Non-food Items Increased:** Water Supply (2.28%), House Rent (2.03%), Motor Vehicles (1.44%), Dopatta (1.30%), Marriage Hall Charges (1.23%) and Firewood Whole (1.10%).

**Decreased:** Kerosene Oil (3.60%).

- Year-on-Year:** Top few commodities which varied from previous year i.e. January 2015 are given below:-

**Food Items Increased:** Onions (80.10%), Pulse Mash (52.61%), Pulse Gram (51.48%), Besan (49.95%), Tea (31.78%), Cigarettes (26.64%), Gram Whole (23.49%), Betel Leaves & Nuts (11.65%) and Sugar (10.65%).

**Decreased:** Potatoes (29.10%), Tomatoes (27.37%), Rice (15.73%), Cooking Oil (14.70%), Eggs (13.70%), Vegetable Ghee (10.64%) and Vegetables (10.42%).

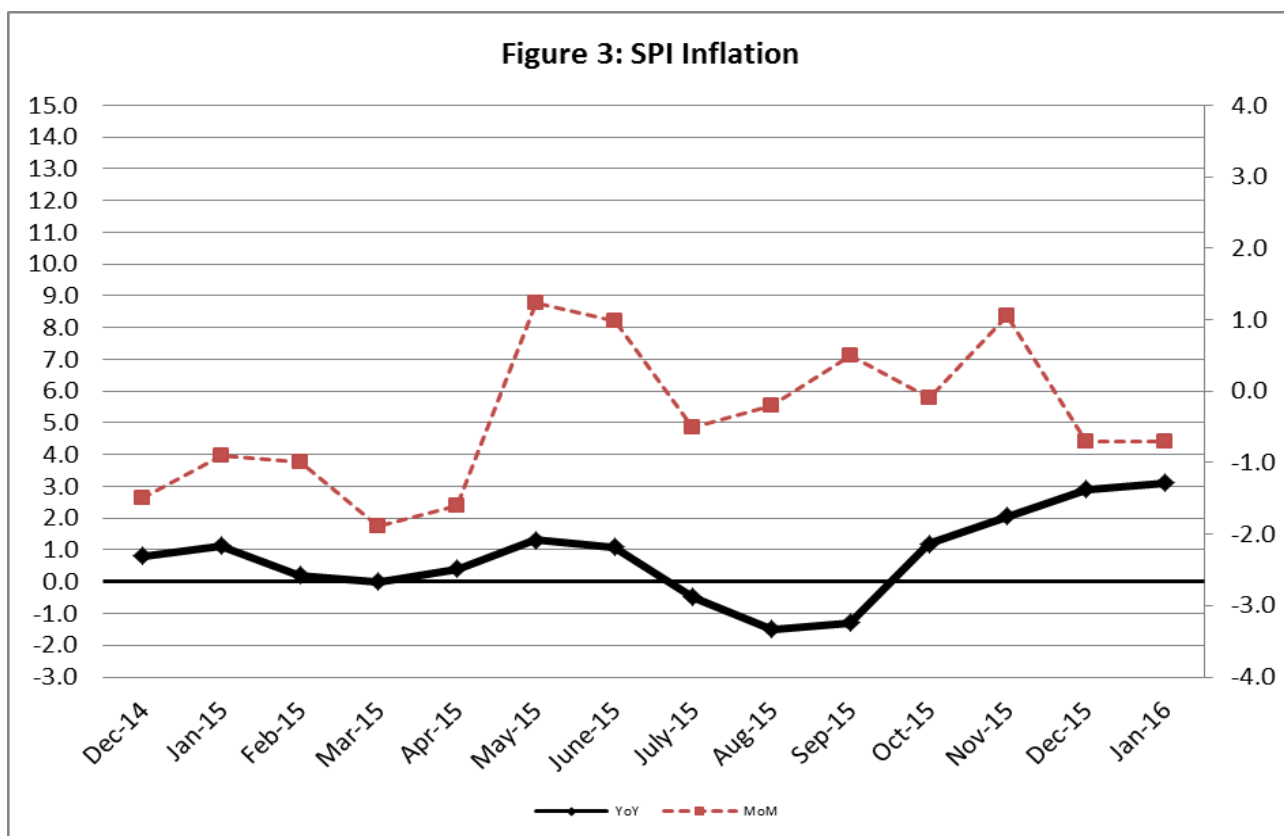
**Non-food Items Increased:** Dry Cell (10.10%), Gas (9.92%), Education (8.81%), Construction Wage Rates (8.56%), Woolen Readymade Garments (8.41%) and Tailoring (8.26%).

**Decreased:** Kerosene Oil (10.13%) and Motor Fuel (4.39%).

### III. Sensitive Price Indicator

Quintile-wise percentage changes YoY and MoM are given below in Table 3. The series from December 2014 to January 2016 is also graphed below in Figure 3.

Table 3 : Sensitive Price Indicator (Base 2007-08)					
Quintiles	Indices			% Change January 2016 over	
	January 2016	December 2015	January 2015	December 2015	January 2015
1	208.21	209.62	201.92	-0.67	3.12
2	215.52	216.87	208.09	-0.62	3.57
3	216.54	217.86	211.30	-0.61	2.48
4	221.24	222.48	212.83	-0.56	3.95
5	218.53	219.50	210.03	-0.44	4.05
Combined	217.47	218.60	209.89	-0.52	3.61



## IV. Wholesale Price Index

The Wholesale Price Index for January 2016 decreased by 0.53% over December, 2015. It increased by 0.08% over the corresponding month of the last year i.e. January 2015. YoY and MoM movements, from December, 2014 to January 2016 are also graphed below in Figure 4.

**Table 4 : Wholesale Price Index by Group of Commodities (Base 2007-08)**

No.	Group	Group Weight (%)	Indices			% Change January, 2016 over		Impact (in %age points) January, 2016 over	
			Jan. 2016	Dec. 2015	Jan. 2015	Dec. 2015	Jan. 2015	Dec. 2015	Jan. 2015
	<b>General</b>	<b>100.00</b>	<b>206.27</b>	<b>207.37</b>	<b>206.11</b>	<b>-0.53</b>	<b>0.08</b>	<b>-0.53</b>	<b>0.08</b>
1.	Agriculture, Forestry & Fishery Products	25.77	221.90	221.68	214.90	0.10	3.26	0.03	0.87
2.	Ores & Minerals, Electricity, Gas & Water	12.04	247.48	247.36	248.30	0.05	-0.33	0.01	-0.05
3.	Food Products, Beverages & Tobacco, Textiles, Apparel & Leather Products	31.11	214.54	213.69	204.71	0.40	4.80	0.13	1.48
	i. Food Products, Bev. & Tobacco	20.07	227.97	226.14	215.13	0.81	5.97	0.18	1.25
	ii. Textiles and Apparel	10.33	189.58	190.57	184.95	-0.52	2.50	-0.05	0.23
	iii. Leather Products	0.71	198.07	198.07	197.27	0.00	0.41	0.00	0.00
4.	Other Transportable Goods except Metal Products, Machinery & Equipment	22.37	168.43	174.69	187.85	-3.58	-10.34	-0.67	-2.11
5.	Metal Products, Machinery & Equipment	8.72	170.69	171.11	173.68	-0.25	-1.72	-0.02	-0.13

Main contributors to month-on-month and year-on-year percentage changes are given below and detail is given in Annexure B.

1. **Month-on-month** Top few commodities which varied from previous month i.e. December, 2015 are given below:-

**Increased:** Woolen Carpet (8.33%), Sugar (7.55%), Cotton seeds (4.86%), Dry fruits (4.53%), Fresh fruits (3.43%), Dried fruits and nuts (3.27%), Poultry (2.65%), Jowar (2.00%), Quilts (1.75%), and Fiber crops (1.34%).

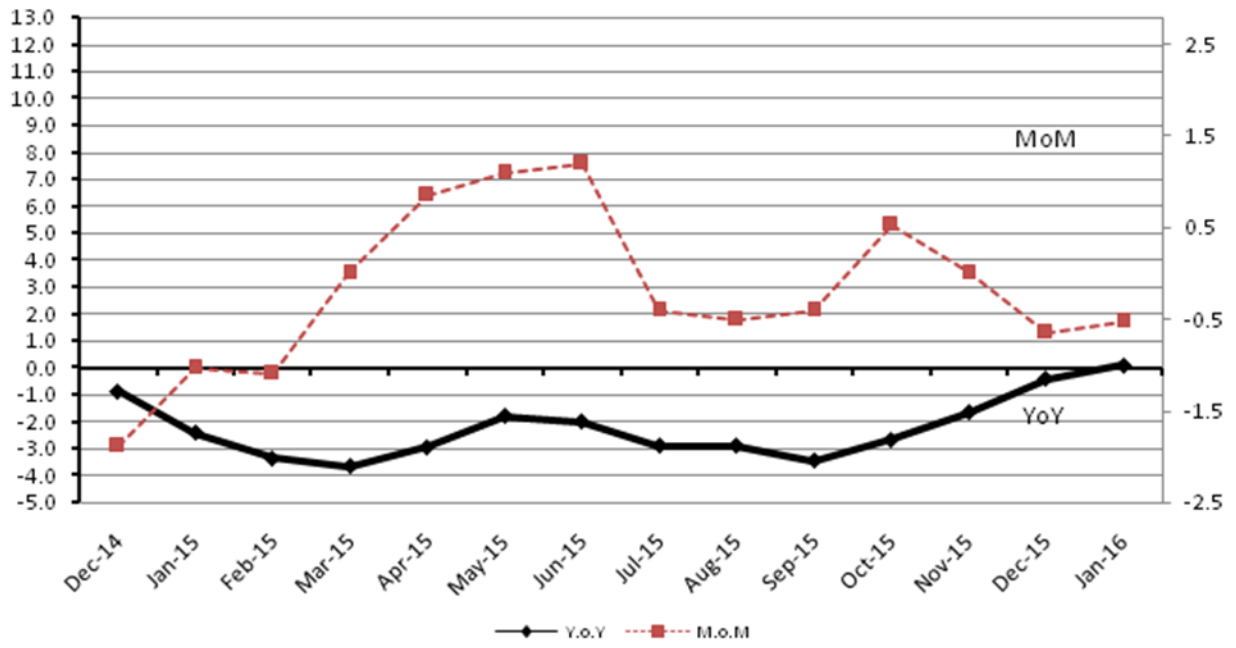
**Decreased:** Furnace oil (23.04%), Potatoes (22.44%), Kerosene oil (14.37%), Vegetables (9.79%), Diesel oil (9.32%), Stimulant & spice crops (2.57%), Eggs (2.51%), Blended yarn (1.42%), and Steel bar (1.31%).

2. **Year-on-year** Top few commodities which varied from previous year i.e. January, 2015 are given below:-

**Increased:** Other Cereal Flour (56.31%), Coffee & Tea (39.45%), Tobacco Products (33.31%), Cotton Seeds (33.29%), Pulses (18.53%), Fish (18.51%), Woolen carpets (17.12%), Sugar Confectionary (16.18%), Matches (13.56%), Bajra (12.39%), Dry fruits (11.33%) and Oil cakes (10.10%)

**Decreased:** Furnace Oil (50.43%), Kerosene Oil (38.69%), Potatoes (24.61%), Diesel (20.45%) Stimulant & Spice Crops (16.53%), Rice (14.96%), Eggs (14.61%) and Coal not agglomerated (14.03%).

Figure 4: WPI Inflation





**Annexure A: Consumer Price Index Numbers by Commodity Groups & Commodities (2007-08=100)**

Item and Specification	Weight	Index Numbers			% Change in Jan 2016 over			
		Jan 16	Dec 15	Jan 15	Dec 2015	Jan 2015		
<b>General</b>	<b>100.0000</b>	<b>203.49</b>	<b>203.06</b>	<b>196.95</b>	<b>+</b>	<b>0.21</b>	<b>+</b>	<b>3.32</b>
<b>Food and non-alcoholic Bevera</b>	<b>34.8343</b>	<b>216.71</b>	<b>218.28</b>	<b>214.11</b>	<b>-</b>	<b>0.72</b>	<b>+</b>	<b>1.21</b>
01 Wheat	0.3477	207.61	206.87	207.59	+	0.36	+	0.01
02 Wheat Flour	4.1648	217.29	217.09	219.21	+	0.09	-	0.88
03 Wheat Product	0.0959	216.36	216.90	218.94	-	0.25	-	1.18
04 Besan	0.1500	265.87	263.29	177.30	+	0.98	+	49.95
05 Rice	1.5821	156.97	156.85	186.26	+	0.08	-	15.73
06 Cereals	0.1563	244.57	244.30	239.85	+	0.11	+	1.97
07 Bakery & Confectionary	1.1550	210.44	210.23	206.87	+	0.10	+	1.73
08 Nimco	0.4574	245.20	243.73	238.64	+	0.60	+	2.75
09 Meat	2.4303	258.70	257.73	244.17	+	0.38	+	5.95
10 Chicken	1.3596	184.93	179.49	203.62	+	3.03	-	9.18
11 Fish	0.2970	223.97	221.24	224.92	+	1.23	-	0.42
12 Milk Fresh	6.6800	259.06	258.64	249.59	+	0.16	+	3.79
13 Milk Products	0.6338	250.44	250.23	242.72	+	0.08	+	3.18
14 Milk Powder	0.1129	233.68	232.01	224.95	+	0.72	+	3.88
15 Eggs	0.4555	205.86	208.94	238.54	-	1.47	-	13.70
16 Mustard Oil	0.0952	154.93	154.57	158.89	+	0.23	-	2.49
17 Cooking Oil	1.7538	132.05	133.55	154.81	-	1.12	-	14.70
18 Vegetable Ghee	2.0714	135.63	136.07	151.78	-	0.32	-	10.64
19 Dry Fruits	0.2543	261.69	258.78	252.91	+	1.12	+	3.47
20 Fresh Fruits	1.8649	203.36	193.24	203.61	+	5.24	-	0.12
21 Pulse Masoor	0.2712	204.23	203.16	190.88	+	0.53	+	6.99
22 Pulse Moong	0.2336	303.36	303.32	312.54	+	0.01	-	2.94
23 Pulse Mash (Washed)	0.2098	346.21	336.48	226.86	+	2.89	+	<u>52.61</u>
24 Pulse Gram	0.2361	272.57	271.32	179.94	+	0.46	+	<u>51.48</u>
25 Gram Whole	0.1616	224.00	221.50	181.39	+	1.13	+	23.49
26 Beans	0.0269	233.35	233.87	237.78	-	0.22	-	1.86
27 Potatoes	0.4776	140.00	198.29	197.47	-	29.40	-	29.10
28 Onion	0.5417	267.82	312.02	148.71	-	14.17	+	<u>80.10</u>
29 Tomatoes	0.4496	123.72	200.23	170.34	-	38.21	-	27.37
30 Fresh Vegetables	1.6571	191.20	202.07	213.45	-	5.38	-	10.42
31 Sugar	1.0445	214.31	202.21	193.68	+	5.98	+	10.65
32 Gur	0.0220	267.27	266.16	254.72	+	0.42	+	4.93
33 Honey	0.0446	307.36	306.28	302.61	+	0.35	+	1.57
34 SweetMeat	0.2483	239.94	239.13	233.27	+	0.34	+	2.86
35 Beverages	1.1990	215.29	217.44	206.18	-	0.99	+	4.42
36 Jam, Tomato Ketchup & Pickles	0.2454	212.15	211.62	204.39	+	0.25	+	3.80
37 Condiments	0.2656	261.47	260.42	255.21	+	0.40	+	2.45
38 Spices	0.5441	238.16	238.38	234.07	-	0.09	+	1.75
39 Tea	0.8377	284.13	279.35	215.61	+	1.71	+	31.78
<b>Alcoholic Beverages, Tobacco</b>	<b>1.4135</b>	<b>337.14</b>	<b>334.66</b>	<b>266.62</b>	<b>+</b>	<b>0.74</b>	<b>+</b>	<b>26.45</b>
40 Cigarettes	1.3906	338.92	336.44	267.63	+	0.74	+	26.64
41 Betel Leaves & Nuts	0.0229	229.04	226.79	205.14	+	0.99	+	11.65
<b>Clothing and footwear</b>	<b>7.5708</b>	<b>224.36</b>	<b>223.65</b>	<b>214.32</b>	<b>+</b>	<b>0.32</b>	<b>+</b>	<b>4.68</b>
42 Cotton Cloth	1.7286	215.77	215.47	207.71	+	0.14	+	3.88
43 Woolen Cloth	0.8759	240.17	239.67	232.93	+	0.21	+	3.11
44 Readymade Garments	0.9739	228.16	227.80	213.31	+	0.16	+	6.96
45 Woolen Readymade Garments	0.3964	260.80	258.26	240.56	+	0.98	+	8.41
46 Hosiery	0.5094	238.25	237.01	225.79	+	0.52	+	5.52
47 Dopatta	0.4412	238.99	235.93	231.18	+	1.30	+	3.38
48 Cleaning and Laundry	0.2110	249.00	248.98	236.18	+	0.01	+	5.43
49 Tailoring	0.8840	287.43	286.25	265.50	+	0.41	+	8.26
50 Footwear	1.5504	165.25	165.24	164.37	+	0.01	+	0.54
<b>Housing, water, Elec., Gas an</b>	<b>29.4149</b>	<b>185.36</b>	<b>182.69</b>	<b>176.51</b>	<b>+</b>	<b>1.46</b>	<b>+</b>	<b>5.01</b>
51 House Rent	21.8149	174.32	170.85	165.29	+	2.03	+	5.46
52 Construction Input Items	0.5623	242.65	242.37	237.26	+	0.12	+	2.27
53 Construction Wage Rates	0.3331	224.27	223.74	206.59	+	0.24	+	8.56
54 Water Supply	0.4971	153.34	149.92	149.92	+	2.28	+	2.28
55 Electricity	4.3985	238.10	238.10	231.52	+	0.00	+	2.84
56 Gas	1.5756	158.08	158.08	143.81	+	0.00	+	9.92
57 Kerosene Oil	0.0057	203.32	210.91	226.23	-	3.60	-	10.13
58 Firewood Whole	0.2277	284.11	281.03	277.90	+	1.10	+	2.23

**Annexure A: Consumer Price Index Numbers by Commodity Groups & Commodities (2007-08=100)**

Item and Specification	Weight	Index Numbers			% Change in Jan 2016 over			
		Jan 16	Dec 15	Jan 15	Dec 2015	Jan 2015		
<b><i>Furnishing and household equi</i></b>	<b>4.2082</b>	<b>217.23</b>	<b>216.78</b>	<b>209.37</b>	<b>+</b>	<b>0.21</b>	<b>+</b>	<b>3.75</b>
59 Furniture	0.3315	207.96	207.57	201.28	+	0.19	+	3.32
60 Household Textiles	0.6489	216.16	215.47	207.52	+	0.32	+	4.16
61 Household Equipment	0.5936	176.48	176.33	172.44	+	0.09	+	2.34
62 Utensils	0.3212	219.40	219.05	211.44	+	0.16	+	3.76
63 Plastic Products	0.2547	206.03	205.82	200.86	+	0.10	+	2.57
64 Washing Soaps & Detergents	0.7893	226.88	226.72	223.21	+	0.07	+	1.64
65 Sewing Needle & Dr Cell	0.1496	202.56	202.24	183.97	+	0.16	+	10.10
66 Household Servant	1.0432	239.42	238.79	227.11	+	0.26	+	5.42
67 Marriage Hall Charges	0.0762	237.37	234.48	231.30	+	1.23	+	2.62
<b><i>Health</i></b>	<b>2.1868</b>	<b>181.45</b>	<b>180.83</b>	<b>176.97</b>	<b>+</b>	<b>0.34</b>	<b>+</b>	<b>2.53</b>
68 Drugs & Medicines	1.2667	149.28	149.14	148.00	+	0.09	+	0.86
69 Medical Equipments	0.0080	226.88	226.66	222.46	+	0.10	+	1.99
70 Doctor (MBBS) Clinic Fee	0.5904	250.01	248.27	238.49	+	0.70	+	4.83
71 Medical Tests	0.3217	181.17	180.72	177.02	+	0.25	+	2.34
<b><i>Transport</i></b>	<b>7.2023</b>	<b>177.96</b>	<b>177.69</b>	<b>181.22</b>	<b>+</b>	<b>0.15</b>	<b>-</b>	<b>1.80</b>
72 Motor Vehicles	0.6630	165.35	163.01	163.77	+	1.44	+	0.96
73 Motor Vehicle Accessories	0.2439	227.78	227.45	230.17	+	0.15	-	1.04
74 Motor Fuel	3.0269	150.56	150.77	157.47	-	0.14	-	4.39
75 Mechanical Service	0.4552	222.39	221.05	210.62	+	0.61	+	5.59
76 Motor Vehicle Tax	0.1099	210.18	210.18	210.18	+	0.00	+	0.00
77 Transport Services	2.7034	198.46	198.32	201.54	+	0.07	-	1.53
<b><i>Communication</i></b>	<b>3.2198</b>	<b>130.61</b>	<b>130.56</b>	<b>130.13</b>	<b>+</b>	<b>0.04</b>	<b>+</b>	<b>0.37</b>
78 Postal Services	0.0662	235.86	234.78	226.10	+	0.46	+	4.32
79 Communication & Apparatus	3.1536	128.40	128.38	128.12	+	0.02	+	0.22
<b><i>Recreation and culture</i></b>	<b>2.0227</b>	<b>193.80</b>	<b>193.66</b>	<b>189.63</b>	<b>+</b>	<b>0.07</b>	<b>+</b>	<b>2.20</b>
80 Recreation & Culture	0.8634	128.53	128.29	128.06	+	0.19	+	0.37
81 Text Books	0.5706	290.62	290.62	280.89	+	0.00	+	3.46
82 Newspapers	0.1934	175.42	175.42	175.42	+	0.00	+	0.00
83 Stationery	0.3953	205.59	205.42	199.33	+	0.08	+	3.14
<b><i>Education</i></b>	<b>3.9431</b>	<b>209.36</b>	<b>209.31</b>	<b>192.41</b>	<b>+</b>	<b>0.02</b>	<b>+</b>	<b>8.81</b>
84 Education	3.9431	209.36	209.31	192.41	+	0.02	+	8.81
<b><i>Restaurants and hotels</i></b>	<b>1.2286</b>	<b>257.11</b>	<b>255.77</b>	<b>244.90</b>	<b>+</b>	<b>0.52</b>	<b>+</b>	<b>4.99</b>
85 Readymade Food	1.2286	257.11	255.77	244.90	+	0.52	+	4.99
<b><i>Misc. goods and services</i></b>	<b>2.7550</b>	<b>227.33</b>	<b>226.28</b>	<b>221.30</b>	<b>+</b>	<b>0.46</b>	<b>+</b>	<b>2.72</b>
86 Personal Care	1.4935	211.12	210.48	205.06	+	0.30	+	2.96
87 Cosmetics	0.3853	196.94	196.47	189.35	+	0.24	+	4.01
88 Blades	0.0322	194.65	194.65	185.62	+	0.00	+	4.86
89 Personal Equipments	0.8440	271.14	269.04	265.97	+	0.78	+	1.94

## Annexure B: Wholesale Price Indices by Major Groups &amp; Commodities

(2007-08=100)

Item and Specification	Weight	Index Numbers			% Change in Jan 2016 over			
		Jan 16	Dec 15	Jan 15	Dec 2015	Jan 2015		
<b>General</b>	<b>100.0000</b>	<b>206.27</b>	<b>207.37</b>	<b>206.11</b>	-	<b>0.53</b>	+	<b>0.08</b>
<b>Agriculture Forestry &amp; Fisher</b>	<b>25.7674</b>	<b>221.90</b>	<b>221.68</b>	<b>214.90</b>	+	<b>0.10</b>	+	<b>3.26</b>
001 Wheat	0.6297	218.54	218.20	210.71	+	0.16	+	3.72
002 Maize	0.6764	181.99	182.47	186.33	-	0.26	-	2.33
003 Rice	2.4413	143.44	142.70	168.68	+	0.52	-	14.96
004 Sorghum / Jowar	0.0214	263.42	258.26	287.71	+	2.00	-	8.44
005 Millet / Bajra	0.0374	182.56	181.34	162.43	+	0.67	+	12.39
006 Vegetables	1.2441	198.21	219.72	199.24	-	9.79	-	0.52
007 Fresh Fruits	1.5144	214.11	207.01	211.03	+	3.43	+	1.46
008 Dry Fruits	0.2478	253.58	242.59	227.77	+	4.53	+	11.33
009 Cotton Seeds	1.1511	265.71	253.39	199.35	+	4.86	+	33.29
010 Other Oil Seeds	0.0722	162.64	162.29	186.61	+	0.22	-	12.84
011 Edible Roots / Potatoes	0.2540	150.23	193.69	199.26	-	22.44	-	24.61
012 Stimulant & Spice Crops	0.1634	251.68	258.33	301.52	-	2.57	-	16.53
013 Pulses	0.4901	251.59	250.31	212.26	+	0.51	+	18.53
014 Sugar Crops	1.0725	286.29	286.29	287.55	+	0.00	-	0.44
015 Fibre Crops	5.3169	174.55	172.25	161.74	+	1.34	+	7.92
016 Unmanufactured Tobacco	0.0742	230.02	229.69	217.23	+	0.14	+	5.89
017 Poultry	0.5633	197.60	192.50	209.94	+	2.65	-	5.88
018 Raw Milk from Bovine Animals	7.0279	255.42	255.42	251.69	+	0.00	+	1.48
019 Eggs	0.5034	209.40	214.79	245.22	-	2.51	-	14.61
020 Raw Animal Materials / Wool	0.0351	179.16	179.16	181.52	+	0.00	-	1.30
021 Hides & Fur Skins, Raw	0.4834	151.58	153.22	162.19	-	1.07	-	6.54
022 Fuel Wood in Logs	0.0179	265.76	263.57	256.69	+	0.83	+	3.53
023 Fish Live Fresh or Chilled	1.7295	342.37	340.91	288.90	+	0.43	+	18.51
<b>Ores/Minerals, Elec., Gas &amp; W</b>	<b>12.0389</b>	<b>247.48</b>	<b>247.36</b>	<b>248.30</b>	+	<b>0.05</b>	-	<b>0.33</b>
024 Coal not Agglomerated	0.7508	192.16	192.16	223.53	+	0.00	-	14.03
025 Natural Gas Liquified	5.7385	211.04	210.78	206.29	+	0.12	+	2.30
026 Salt & Pure Sodium Chloride	0.0584	252.31	252.31	247.16	+	0.00	+	2.08
027 Electrical Energy	5.4912	293.09	293.09	295.61	+	0.00	-	0.85
<b>Food, Beverages, Tobacco, Textil</b>	<b>31.1122</b>	<b>214.54</b>	<b>213.69</b>	<b>204.71</b>	+	<b>0.40</b>	+	<b>4.80</b>
<b>Food Products, Beverages &amp;</b>	<b>20.0718</b>	<b>227.97</b>	<b>226.14</b>	<b>215.13</b>	+	<b>0.81</b>	+	<b>5.97</b>
028 Meat of Animals	3.4559	268.44	267.04	257.79	+	0.52	+	4.13
029 Vegetables & Fruit Juice	0.0058	201.36	201.36	198.31	+	0.00	+	1.54
030 Dried Fruits & Nuts	0.1733	247.99	240.13	232.57	+	3.27	+	6.63
031 Fruit Juices	0.3880	175.90	177.53	172.22	-	0.92	+	2.14
032 Vegetable Oils Refined	1.9242	149.31	149.34	159.94	-	0.02	-	6.65
033 Vegetable Ghee	1.5632	117.91	118.09	130.81	-	0.15	-	9.86
034 Oil Cakes	0.9611	218.92	218.03	198.84	+	0.41	+	10.10
035 Processed Liquid Milk	4.4437	247.57	247.57	245.21	+	0.00	+	0.96
036 Milk & Cream in Solid Form	0.0316	219.09	217.97	222.86	+	0.51	-	1.69
037 Ice Cream	0.0047	219.91	219.91	219.91	+	0.00	+	0.00
038 Dairy Products N.E.C	0.0117	245.35	244.60	238.90	+	0.31	+	2.70
039 Wheat Flour	2.3034	202.19	202.13	200.35	+	0.03	+	0.92
040 Other Cereal Flour	0.0604	231.67	229.87	148.21	+	0.78	+	56.31
041 Sugar Refined	1.7975	226.45	210.55	206.01	+	7.55	+	9.92
042 Chocolate	0.0139	101.06	101.06	99.19	+	0.00	+	1.89
043 Sugar Confectionary	0.0738	118.83	118.83	102.28	+	0.00	+	16.18
044 Coffee & Tea	0.7303	264.10	261.86	189.39	+	0.86	+	39.45
045 Spices	0.1449	188.40	188.33	189.65	+	0.04	-	0.66
046 Other Food Products	0.0336	292.52	292.02	298.01	+	0.17	-	1.84
047 Mineral Water	0.0207	189.02	188.35	187.86	+	0.36	+	0.62
048 Beverages	0.6303	171.95	171.95	171.52	+	0.00	+	0.25
049 Tobacco Products	1.2998	387.30	387.30	290.52	+	0.00	+	33.31
<b>Textiles &amp; Apparels</b>	<b>10.3289</b>	<b>189.58</b>	<b>190.57</b>	<b>184.95</b>	-	<b>0.52</b>	+	<b>2.50</b>
050 Cotton Yarn	5.2491	175.73	177.62	172.44	-	1.06	+	1.91
051 Nylon Yarn	0.1719	147.08	147.08	156.04	+	0.00	-	5.74
052 Blended Yarn	0.1689	178.32	180.89	190.28	-	1.42	-	6.29
053 Woven Fabrics	0.0128	275.66	275.66	258.39	+	0.00	+	6.68
054 Cotton Fabrics	0.6343	201.65	201.65	200.51	+	0.00	+	0.57
055 Other Fabrics	1.1016	217.81	217.81	207.48	+	0.00	+	4.98
056 Silk & Reyon Fabrics	0.7350	186.80	186.80	177.28	+	0.00	+	5.37
057 Towels	0.1235	267.20	267.20	265.62	+	0.00	+	0.59
058 Blankets	0.0029	243.93	243.93	235.86	+	0.00	+	3.42

## Annexure B: Wholesale Price Indices by Major Groups &amp; Commodities

(2007-08=100)

Item and Specification	Weight	Index Numbers			% Change in Jan 2016 over		
		Jan 16	Dec 15	Jan 15	Dec 2015	Jan 2015	
059 Bed Sheets	0.0913	256.29	256.29	253.21	+	0.00	+ 1.22
060 Quilts	0.0019	201.47	198.00	196.84	+	1.75	+ 2.35
061 Woolen Carpets	0.0383	154.76	142.86	132.14	+	8.33	+ 17.12
062 Synthetic Carpets	0.0566	129.25	129.25	126.27	+	0.00	+ 2.36
063 Hosiery Products	0.8832	222.52	222.88	215.35	-	0.16	+ 3.33
064 Readymade Garments	1.0576	193.27	193.27	186.77	+	0.00	+ 3.48
<b>Leather Products</b>	<b>0.7115</b>	<b>198.07</b>	<b>198.07</b>	<b>197.27</b>	<b>+</b>	<b>0.00</b>	<b>+ 0.41</b>
065 Leather Without Hair	0.2973	221.97	221.97	215.02	+	0.00	+ 3.23
066 Other Leather N.E.C	0.2567	207.64	207.64	215.39	+	0.00	- 3.60
067 Footwears	0.1575	137.38	137.38	134.22	+	0.00	+ 2.35
<b>Other Transportable Goods</b>	<b>22.3659</b>	<b>168.43</b>	<b>174.69</b>	<b>187.85</b>	<b>-</b>	<b>3.58</b>	<b>- 10.34</b>
068 Timber	0.0165	216.25	214.43	202.05	+	0.85	+ 7.03
069 Printing Paper	0.4279	161.82	161.82	169.34	+	0.00	- 4.44
070 Hard Board	0.1579	197.92	197.92	229.17	+	0.00	- 13.64
071 Coke	0.2797	163.45	163.45	163.45	+	0.00	+ 0.00
072 Motor Spirit	1.5336	128.80	128.80	132.22	+	0.00	- 2.59
073 Diesel Oil	5.2664	155.51	171.49	195.49	-	9.32	- 20.45
074 Kerosine Oil	0.2151	128.46	150.01	209.53	-	14.37	- 38.69
075 Furnace Oil	3.2664	50.24	65.28	101.36	-	23.04	- 50.43
076 Mobil Oil	0.7114	199.78	199.78	201.53	+	0.00	- 0.87
077 Chemicals	1.7720	182.92	182.83	199.84	+	0.05	- 8.47
078 Dyeing Material	0.1539	146.55	146.55	145.16	+	0.00	+ 0.96
079 Fertilizers	2.8657	270.92	271.62	274.54	-	0.26	- 1.32
080 Pesticides	0.2763	312.37	312.37	290.15	+	0.00	+ 7.66
081 Insecticides	0.1276	134.66	134.66	149.54	+	0.00	- 9.95
082 Paints & Varnishes	0.1916	295.36	295.36	288.63	+	0.00	+ 2.33
083 Medicines	1.1428	146.89	146.89	145.19	+	0.00	+ 1.17
084 Soaps & Detergents	0.8168	181.44	181.28	178.31	+	0.09	+ 1.76
085 Auto Tyres	0.2703	192.68	192.83	192.43	-	0.08	+ 0.13
086 Plastic Products	0.4550	229.95	231.05	221.88	-	0.48	+ 3.64
087 Glass sheets	0.2089	231.30	231.30	226.39	+	0.00	+ 2.17
088 Other Glass Articles	0.1635	243.63	243.63	242.20	+	0.00	+ 0.59
089 Ceramics & Sanitary Fixture	0.0244	226.78	227.13	216.53	-	0.15	+ 4.73
090 Bricks, Blocks & Tiles	0.1566	216.96	217.47	204.99	-	0.23	+ 5.84
091 Cement	1.8145	206.70	206.53	208.27	+	0.08	- 0.75
092 Bed Foam	0.0006	157.17	157.17	156.67	+	0.00	+ 0.32
093 Matches	0.0505	162.62	162.62	143.20	+	0.00	+ 13.56
<b>Metal Product, Machinery &amp; Eq</b>	<b>8.7156</b>	<b>170.69</b>	<b>171.11</b>	<b>173.68</b>	<b>-</b>	<b>0.25</b>	<b>- 1.72</b>
094 Pig Iron	0.0593	128.97	128.97	128.97	+	0.00	+ 0.00
095 Steel Bar & Sheets	1.4022	125.33	127.00	144.48	-	1.31	- 13.25
096 Pipe Fittings	0.0780	193.06	194.96	191.94	-	0.97	+ 0.58
097 Steel Products	0.3879	176.27	176.27	173.80	+	0.00	+ 1.42
098 Engines & Motors	0.0046	109.07	109.07	109.07	+	0.00	+ 0.00
099 Vacuum Pumps	0.0155	115.39	115.39	115.39	+	0.00	+ 0.00
100 Air Conditioners	0.0049	200.18	200.18	195.53	+	0.00	+ 2.38
101 Cultivators	0.0551	219.76	219.76	226.90	+	0.00	- 3.15
102 Chuff Cutter	0.1293	149.20	149.20	149.20	+	0.00	+ 0.00
103 Tractors	0.0028	205.43	205.43	214.54	+	0.00	- 4.25
104 Lathe Machines	0.0525	208.81	208.81	208.81	+	0.00	+ 0.00
105 Concrete Mixture	0.0107	138.83	138.83	138.83	+	0.00	+ 0.00
106 Fridge, WashM, SewM, Fans, Iron	1.1645	199.36	200.43	198.06	-	0.53	+ 0.66
107 Electric Wires	0.0912	195.19	195.19	190.43	+	0.00	+ 2.50
108 Lighting Equipments	1.4431	167.30	167.30	168.19	+	0.00	- 0.53
109 Radio & Television	0.1843	126.49	126.49	126.49	+	0.00	+ 0.00
110 Motor Vehicles	0.0244	184.14	183.03	183.03	+	0.61	+ 0.61
111 Motorcycles	0.2570	125.89	125.89	128.20	+	0.00	- 1.80
112 Bicycles	3.3483	185.63	185.63	185.63	+	0.00	+ 0.00