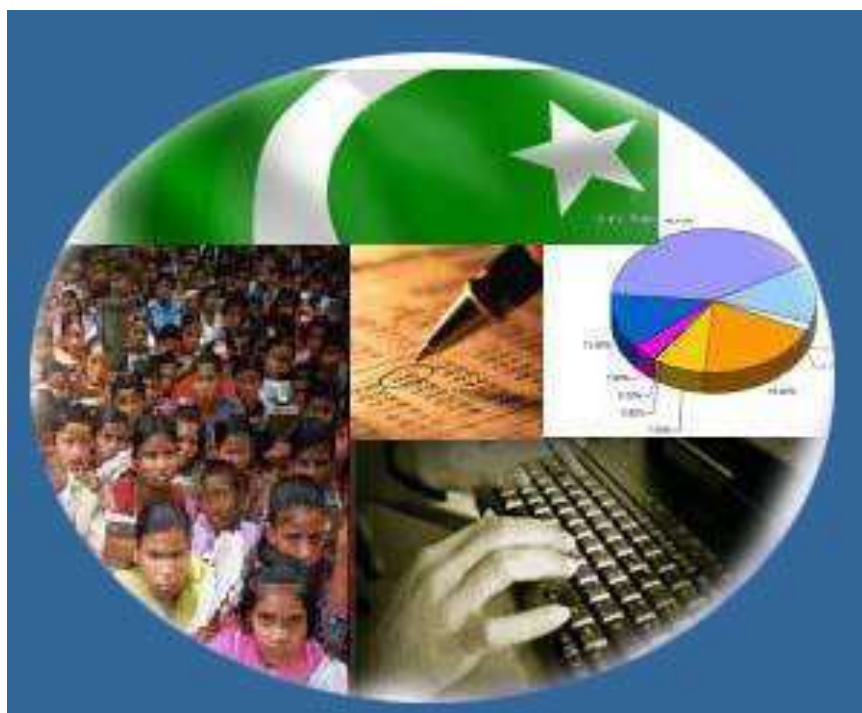




Monthly Review on Price Indices



August, 2016
(Base 2007-08)

Government of Pakistan
Statistics Division
Pakistan Bureau of Statistics
Islamabad

Inflation in Brief

1. CPI inflation General increased by 3.6% on year-on-year basis in August 2016 as compared to an increase of 4.1% in the previous month and 1.8% in August 2015. On month-on-month basis, it decreased by 0.3% in August 2016 as compared to an increase of 1.3% in the previous month and an increase of 0.2% in August 2015.
2. Core inflation measured by non-food non-energy CPI (Core NFNE) increased by 4.6% on (YoY) basis in August 2016 as compared to increase of 4.5% in the previous month and 4.0% in August 2015. On (MoM) basis, it increased by 0.2% in August 2016 as compared to increase of 0.6% in previous month and an increase of 0.1% in August 2015.
3. Core inflation, measured by 20% weighted trimmed mean CPI (Core Trimmed) increased by 3.5% on (YoY) basis in August 2016 as compared to 3.6% in the previous month and by 2.8% in August 2015. On (MoM) basis, it increased by 0.1% in August 2016 as compared to an increase of 0.5% in the previous month and 0.1% in August 2015.
4. SPI inflation on YoY increased by 2.2% in August 2016 as compared to an increase of 1.7% a month earlier and decrease of 1.5 % in August 2015. On MoM basis, it increased by 0.2% in August 2016 as compared to an increase of 1.3% a month earlier and a decrease of 0.2% in August, 2015.
5. WPI inflation on YoY basis increased by 3.5% in August 2016 as compared to an increase of 3.0% a month earlier and a decrease of 2.9% in August 2015. WPI inflation on MoM basis decreased by 0.03% in August 2016 as compared to an increase of 2.3% a month earlier and a decrease of 0.5% in August 2015.
6. Figures 1 and 2 show graphically the data of Table 1. Table 1.1 shows "Period Average" and "YoY" percent changes in indices of three years.

Table 1: Inflation (%) (Base 2007-08)

Period	CPI						Core Inflation				SPI**		WPI	
	General		Food		Non-food		NFNE*		Trimmed		YoY	MoM	YoY	MoM
	YoY	MoM	YoY	MoM	YoY	MoM	YoY	MoM	YoY	MoM				
Jul-15	1.9	0.4	0.6	0.1	2.8	0.6	4.1	0.6	2.9	0.5	-0.5	0.3	-2.9	-0.4
Aug-15	1.8	0.2	0.4	0.3	2.8	0.2	4.0	0.1	2.8	0.1	-1.5	-0.2	-2.9	-0.5
Sep-15	1.3	-0.1	-0.1	-0.4	2.4	0.1	3.4	0.1	2.8	0.1	-1.3	0.5	-3.5	-0.5
Oct 15	1.6	0.5	0.5	0.4	2.4	0.5	3.4	0.0	2.8	0.0	-0.1	1.2	-2.7	0.5
Nov 15	2.7	0.6	2.2	1.2	3.2	0.2	4.0	0.1	2.9	0.2	2.1	1.0	-1.7	0.0
Dec 15	3.2	-0.6	2.7	-1.6	3.6	0.2	4.1	0.2	2.7	0.2	2.9	-0.7	-0.4	-0.6
Jan 16	3.3	0.2	2.5	-0.6	3.9	0.8	4.3	0.9	3.0	0.6	3.1	-0.7	0.1	-0.5
Feb 16	4.0	-0.3	3.7	-0.7	4.2	0.0	4.5	0.2	3.6	0.1	3.6	-0.5	0.6	-0.6
Mar 16	3.9	0.1	3.7	0.5	4.1	-0.1	4.7	0.2	3.8	0.2	3.5	-0.2	0.2	-0.4
April 16	4.2	1.5	4.7	2.4	3.8	1.0	4.4	1.1	3.8	0.6	2.9	-0.1	0.6	1.3
May 16	3.2	-0.2	2.1	-0.7	3.9	0.2	4.6	0.2	3.6	0.2	0.6	-1.0	0.0	0.6
June 16	3.2	0.6	2.3	1.4	3.8	0.1	4.6	0.1	3.7	0.2	0.7	1.1	0.2	1.4
July 16	4.1	1.3	4.7	2.5	3.7	0.5	4.5	0.6	3.6	0.5	1.7	1.3	3.0	2.3
Aug 16	3.6	-0.3	3.4	-0.9	3.7	0.2	4.6	0.2	3.5	0.1	2.2	0.2	3.5	0.0

*NFNE is non-food non-energy, ** SPI for quintile 1. Digits 0.0* are due to rounding off.

Table 1.1 : Period Average and YoY % Changes of Indices (Base 2007-08)

Index	Averages July-August % Changes			August over August % Changes		
	2016-17	2015-16	2014-15	2016	2015	2014
CPI	3.84	1.83	7.44	3.56	1.79	6.99
SPI	1.94	-0.99	5.53	2.15	-1.49	5.17
WPI	3.25	-2.91	4.91	3.52	-2.94	3.31

Figure 1: CPI Inflation YoY, Special Indices

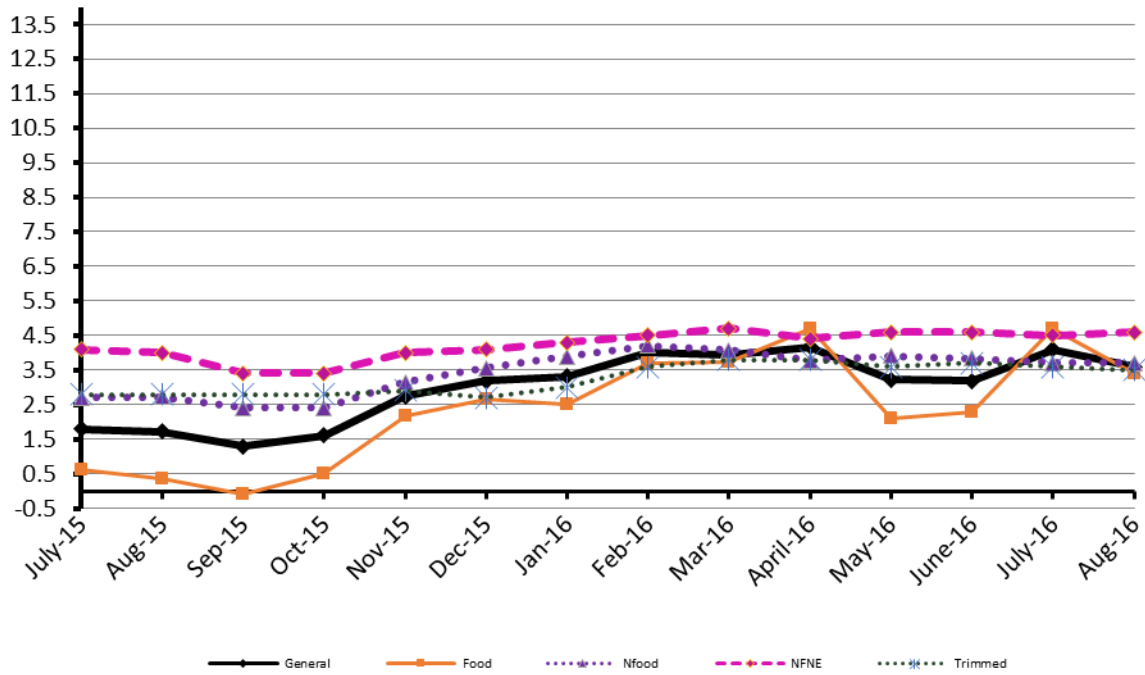
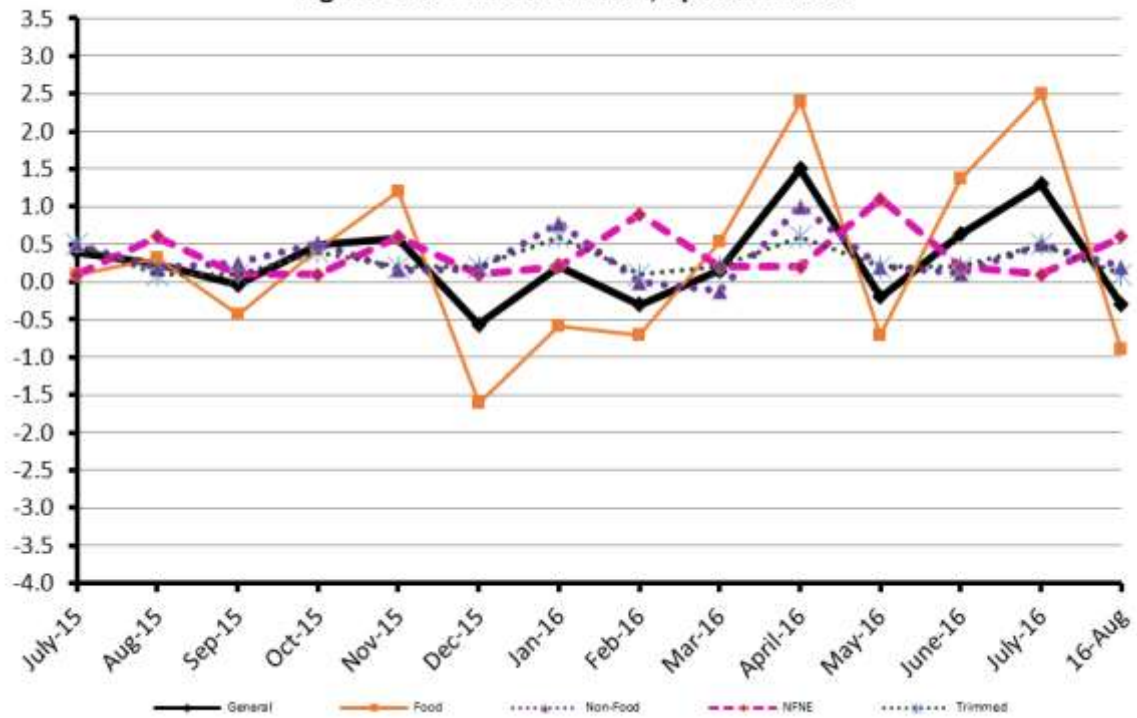


Figure 2: CPI Inflation MoM, Special Indices



II. Consumer Price Index (CPI)

The Consumer Price Index of August 2016, has decreased by 0.30% over July 2016 and increased by 3.56% over corresponding month of the last year i.e. August 2015.

Table 2 : Consumer Price Index by Group of Commodities and Services (Base 2007-08)

No	Group	Group Weight (%)	Indices			% Change August 2016 Over		Impact (In % points) August 2016 Over	
			Aug 2016	July 2016	Aug 2015	July 2016	Aug 2015	July 2016	Aug 2015
	General	100.00	209.46	210.08	202.25	-0.30	3.56	-0.30	3.56
1.	Food & Non-alcoholic Bev.	34.83	225.91	228.36	220.51	-1.07	2.45	-0.41	0.93
	<i>Non-perishable Food Items</i>	29.84	223.21	223.10	217.89	0.05	2.44	0.02	0.78
	<i>Perishable Food Items</i>	4.99	242.04	259.85	236.16	-6.85	2.49	-0.42	0.14
2.	Alcoholic Bev.& Tobacco	1.41	365.41	364.79	309.90	0.17	17.91	0.00	0.39
3.	Clothing & Footwear	7.57	230.14	229.72	220.27	0.18	4.48	0.01	0.37
4.	Housing, Water, Electricity, Gas & Fuels	29.41	188.91	188.88	180.31	0.02	4.77	0.00	1.25
5.	Furnishing & Household Equipment Maintenance	4.21	222.31	221.70	214.22	0.28	3.78	0.01	0.17
6.	Health	2.19	189.42	187.84	179.01	0.84	5.82	0.02	0.11
7.	Transport	7.20	170.10	169.78	178.02	0.19	-4.45	0.01	-0.28
8.	Communication	3.22	130.90	130.89	130.36	0.01	0.41	0.00	0.01
9.	Recreation & Culture	2.02	195.77	195.67	193.03	0.05	1.42	0.00	0.03
10.	Education	3.94	225.17	224.09	209.23	0.48	7.62	0.02	0.31
11.	Restaurants & Hotels	1.23	265.77	264.37	250.26	0.53	6.20	0.01	0.09
12.	Miscellaneous	2.76	237.38	235.82	223.88	0.66	6.03	0.02	0.18

Main contributors to month-on-month and year-on-year percentage changes are given below and detail is given in Annexure A.

1. **Month-on-month** Top few commodities which varied from previous month i.e. July 2016 are given below:-

Food Items Increased: Eggs (8.01%), Sugar (6.62%), Potatoes (4.24%), Pulse Gram (2.6%), Gur (2.55%), Gram whole (1.63%), Besan (1.54%), Wheat (1.41%) and Rice (1.02%).

Decreased: Chicken (14.78%), Tomatoes (13.87%), Onion (13.62%), Fresh Fruits (9.32%), Fresh Vegetables (3.98%), Pulse Moong (1.59%), and Betel leaves & Nuts (1.2%).

Non-food Items Increased: Motor Vehicles (1.88%), Drugs & Medicines (1.67%), Personal Equipments (1.19%), and Medical equipments (0.9%).

Decreased: Motor Fuel (0.14%) and kerosene oil (0.12%).

2. **Year-on-Year:** Top few commodities which varied from previous year i.e. August 2015 are given below:-

Food Items Increased: Gram Whole (47.7%), Pulse Mash (45.96%), Pulse Gram (40.41%), Besan (38.31%), Potatoes (32.85%), Cigarettes (17.98%), Betel Leaves and Nuts (12.48%), Fresh Vegetables (11.47%), Pulse Masoor (9.41%), Sugar (8.74%), and Readymade Food (6.2%).

Decreased: Onion (31.67%), Chicken (17.02%), Rice (8.21%), Cooking Oil (5.57%), Vegetable Ghee (2.39%), Pulse Moong (1.9%), Eggs (1.82%) and Fresh Fruits (1.81%).

Non-food Items Increased: Gas (9.92%), Personal Equipments (9.49%), Water Supply (8.94%), Education (7.62%), Doctor (MBBS) Clinic Fee (7.25%), Tailoring (7.17%), Construction Wage Rates (6.69%), Household Servants (6.44%), Cleaning & Laundry (5.84%), Household Rent (5.79%), Readymade Garments (5.45%), Medical Tests (5.12%), Cotton Cloth (5.09%), Woolen Readymade Garments (5.08%), and Stationary (5.01%).

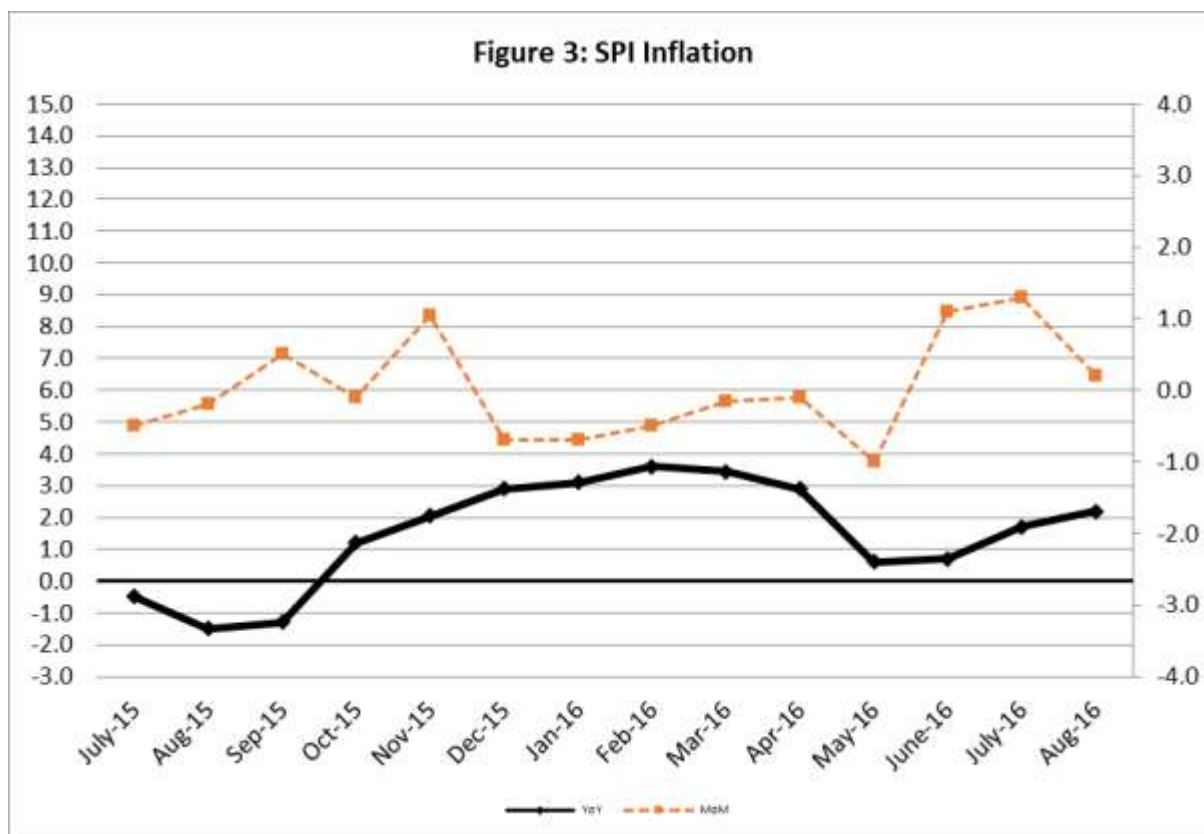
Decreased: Motor Fuel (11.39%), Kerosene Oil (10.02%), Motor Vehicle Accessories (5.55%) and Transport Services (2.0%).

III. Sensitive Price Indicator

Quintile-wise percentage changes YoY and MoM are given below in Table 3. The series from July 2015 to August 2016 is also graphed below in Figure 3.

Table 3: Sensitive Price Indicator (Base 2007-08)					
Quintiles	Indices			% Change Aug 2016 over	
	Aug 2016	July 2016	Aug 2015	July 2016	Aug 2015
1	210.07	209.59	205.64	0.23	2.15
2	219.49	216.91	211.90	1.19	3.58
3	218.24	218.20	215.51	0.02	1.27
4	222.64	222.74	217.39	-0.04	2.42
5	219.11	219.55	214.74	-0.20	2.04
Combined	218.66	218.81	214.31	-0.07	2.03

Table 3.1 : Weekly Percentage Change of SPI During August-16				
Quintiles	% Change with Previous week			
	25th Aug-2016	18th Aug-2016	11th Aug-2016	4th Aug-2016
Quantile 1	-0.35	0.16	-0.20	-0.33
Combined	-0.35	0.21	-0.18	-0.39



IV. Wholesale Price Index

The Wholesale Price Index for August, 2016 decreased by 0.03% over July, 2016. It increased by 3.52% over the corresponding month of the last year. YoY and MoM movements, from July, 2015 to August, 2016 are also graphed below in Figure 4.

Table 4 : Wholesale Price Index by Group of Commodities (Base 2007-08)									
No.	Group	Group Weight (%)	Indices			% Change August, 2016 over		Impact (in %age points) August, 2016 over	
			Aug 2016	July 2016	Aug 2015	July 2016	Aug 2015	July 2016	Aug 2015
	General	100.00	215.75	215.81	208.42	-0.03	3.52	-0.03	3.52
1.	Agriculture, Forestry & Fishery Products	25.77	251.53	253.54	225.90	-0.79	11.35	-0.24	3.17
2.	Ores & Minerals, Electricity, Gas & Water	12.04	241.26	241.43	244.06	-0.07	-1.15	-0.01	-0.16
3.	Food Products, Beverages & Tobacco, Textiles, Apparel & Leather Products	31.11	225.84	223.61	210.52	1.00	7.28	0.32	2.29
	i. Food Products, Bev. & Tobacco	20.07	236.76	235.27	224.46	0.63	5.48	0.14	1.18
	ii. Textiles and Apparel	10.33	206.44	202.64	184.63	1.88	11.81	0.18	1.08
	iii. Leather Products	0.71	199.41	199.21	193.00	0.10	3.32	0.00	0.02
4.	Other Transportable Goods except Metal Products, Machinery & Equipment	22.37	163.50	164.40	180.27	-0.55	-9.30	-0.09	-1.80
5.	Metal Products, Machinery & Equipment	8.72	172.82	172.94	172.29	-0.07	0.31	0.00	0.02

Main contributors to month-on-month and year-on-year percentage changes are given below and detail is given in Annexure B.

1. **Month-on-month** Top few commodities which varied from previous month i.e. July, 2016 are given below:-

Increased: Potatoes (10.94%), Eggs (10.80%), Glass Sheets (6.36%), Fiber Crops (5.30%), Sugar (4.99%), Radio & Television (3.59%), Cotton Yarn (3.27%), Unmanufactured Tobacco (1.94%) and Rice (1.16%).

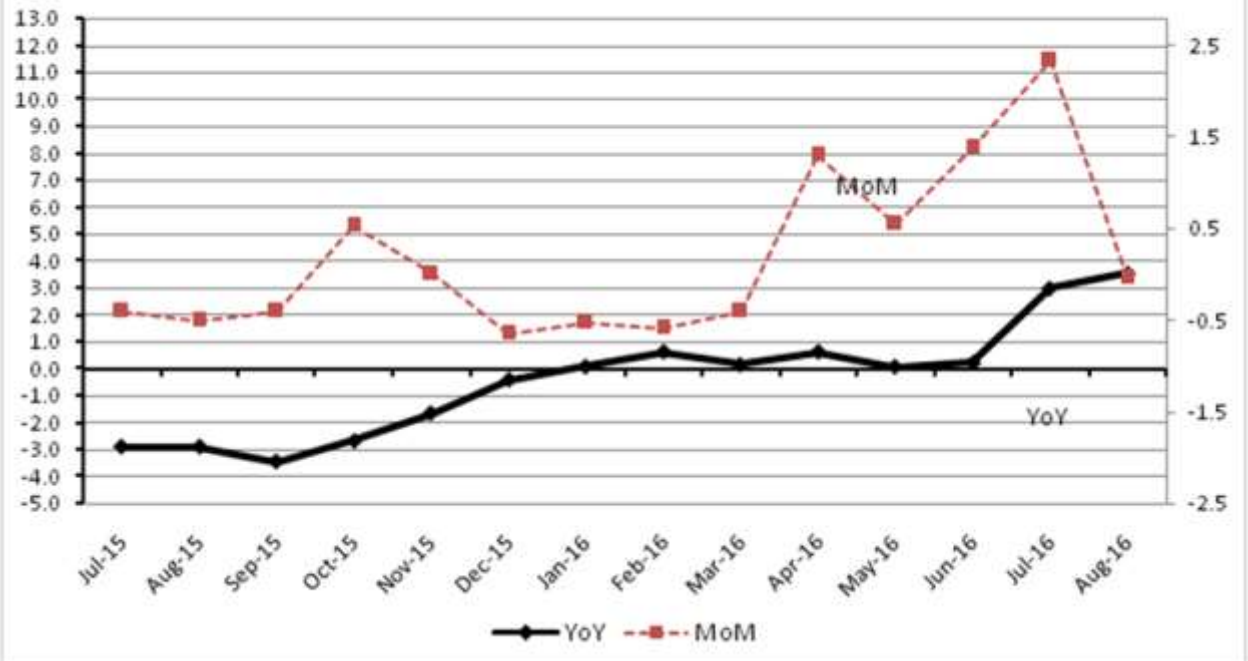
Decreased: Poultry (17.75%), Fresh Fruits (16.43%), Hard Board (6.86%), Furnace Oil (5.35%), Vegetables (5.09%), Cotton Seeds (4.93%), Dry Fruits (4.55%), Jowar (2.95%), Bajra (1.63%) and Steel Bar & Sheets (1.29%).

2. **Year-on-year** Top few commodities which varied from previous year i.e. August, 2015 are given below:-

Increased: Potatoes (67.23%), Other Cereal Flour (43.84%), Fiber Crops (40.05%), Fish (38.34%), Woolen carpets (37.39%), Pulses (31.44%), Other Glass Articles (22.76%), Tobacco Products (22.05%), Cotton Yarn (21.85%), Oil cakes (18.13%), Cotton Seeds (13.01%), Unmanufactured Tobacco (12.77%), Medicines (12.11%) and Radio & Television (11.01%).

Decreased: Stimulant & Spice Crops (35.52%), Coal (31.58%), Kerosene Oil (30.47%), Poultry (22.20%), Jowar (20.95%), Diesel Oil (18.86%), Fertilizers (16.73%), Furnace oil (16.36%), Motor spirit (16.28%) and Steel Bar & Sheets (10.36%).

Figure 4: WPI Inflation



Annexure A:CPI by Commodity Groups and Commodities (2007-08=100)

Item and Specification	Weight	Index Numbers			% Change in Aug 2016 over			
		Aug 2016	Jul 2016	Aug 2015	Jul 2016	Aug 2015		
<i>General</i>	100.0000	209.46	210.08	202.25	-	0.30	+	3.56
<i>Food and non-alcoholic Beverages</i>	34.8343	225.91	228.36	220.51	-	1.07	+	2.45
1 Wheat	0.3477	193.50	190.81	194.04	+	1.41	-	0.28
2 Wheat Flour	4.1648	209.16	208.98	208.24	+	0.09	+	0.44
3 Wheat Product	0.0959	215.54	214.98	212.75	+	0.26	+	1.31
4 Besan	0.1500	327.65	322.68	236.90	+	1.54	+	38.31
5 Rice	1.5821	159.75	158.13	174.03	+	1.02	-	8.21
6 Cereals	0.1563	250.03	249.62	243.87	+	0.16	+	2.53
7 Bakery & Confectionary	1.1550	215.45	215.31	209.48	+	0.07	+	2.85
8 Nimco	0.4574	248.87	248.79	240.88	+	0.03	+	3.32
9 Meat	2.4303	263.86	262.75	252.42	+	0.42	+	4.53
10 Chicken	1.3596	157.45	184.75	189.75	-	14.78	-	17.02
11 Fish	0.2970	218.81	218.77	211.30	+	0.02	+	3.55
12 Milk Fresh	6.6800	266.37	265.50	255.57	+	0.33	+	4.23
13 Milk Products	0.6338	256.76	256.27	247.22	+	0.19	+	3.86
14 Milk Powder	0.1129	236.75	236.84	227.17	-	0.04	+	4.22
15 Eggs	0.4555	192.60	178.31	196.17	+	8.01	-	1.82
16 Mustard Oil	0.0952	154.01	153.99	153.77	+	0.01	+	0.16
17 Cooking Oil	1.7538	133.69	133.61	141.58	+	0.06	-	5.57
18 Vegetable Ghee	2.0714	136.99	136.94	140.34	+	0.04	-	2.39
19 Dry Fruits	0.2543	262.69	263.57	250.52	-	0.33	+	4.86
20 Fresh Fruits	1.8649	235.74	259.98	240.08	-	9.32	-	1.81
21 Pulse Masoor	0.2712	214.39	213.56	195.95	+	0.39	+	9.41
22 Pulse Moong	0.2336	292.35	297.08	298.00	-	1.59	-	1.90
23 Pulse Mash (Washed)	0.2098	373.69	372.81	256.02	+	0.24	+	45.96
24 Pulse Gram	0.2361	344.99	336.26	245.70	+	2.60	+	40.41
25 Gram Whole	0.1616	303.31	298.45	205.35	+	1.63	+	47.70
26 Beans	0.0269	235.74	236.29	234.52	-	0.23	+	0.52
27 Potatoes	0.4699	242.67	232.81	182.67	+	4.24	+	32.85
28 Onion	0.5340	168.93	195.56	247.23	-	13.62	-	31.67
29 Tomatoes	0.4419	202.32	234.89	197.35	-	13.87	+	2.52
30 Fresh Vegetables	1.6802	282.55	294.26	253.47	-	3.98	+	11.47
31 Sugar	1.0445	253.85	238.08	233.44	+	6.62	+	8.74
32 Gur	0.0220	288.05	280.90	285.83	+	2.55	+	0.78
33 Honey	0.0446	312.60	310.80	304.35	+	0.58	+	2.71
34 SweetMeat	0.2483	243.97	242.45	237.20	+	0.63	+	2.85
35 Beverages	1.1990	221.76	221.71	215.71	+	0.02	+	2.80
36 Jam, Tomato Ketchup & Pickles	0.2454	215.53	215.61	210.53	-	0.04	+	2.37
37 Condiments	0.2656	262.89	263.23	258.10	-	0.13	+	1.86
38 Spices	0.5441	242.16	241.62	238.09	+	0.22	+	1.71
39 Tea	0.8377	255.57	255.25	252.00	+	0.13	+	1.42
<i>Alcoholic Beverages, Tobacco</i>	1.4135	365.41	364.79	309.90	+	0.17	+	17.91
40 Cigarettes	1.3906	367.46	366.77	311.47	+	0.19	+	17.98
41 Betel Leaves & Nuts	0.0229	241.23	244.15	214.46	-	1.20	+	12.48
<i>Clothing and footwear</i>	7.5708	230.14	229.72	220.27	+	0.18	+	4.48
42 Cotton Cloth	1.7286	225.23	224.88	214.33	+	0.16	+	5.09
43 Woolen Cloth	0.8759	244.64	244.64	236.10	+	0.00	+	3.62
44 Readymade Garments	0.9739	238.15	237.04	225.84	+	0.47	+	5.45
45 Woolen Readymade Garments	0.3964	253.10	253.14	240.86	-	0.02	+	5.08

Item and Specification	Weight	Index Numbers			% Change in Aug 2016	
		Aug 2016	July 2016	Aug 2015	July 2016	Aug 2015
46 Hosiery	0.5094	243.83	242.55	233.85	+ 0.53	+ 4.27
47 Dopatta	0.4412	241.64	240.75	233.88	+ 0.37	+ 3.32
48 Cleaning and Laundry	0.2110	253.54	253.34	239.56	+ 0.08	+ 5.84
49 Tailoring	0.8840	298.65	298.33	278.68	+ 0.11	+ 7.17
50 Footwear	1.5504	166.50	166.44	164.95	+ 0.04	+ 0.94
<u>Housing, water, Elec., Gas and other fuels</u>	29.4149	188.91	188.88	180.31	+ 0.02	+ 4.77
51 House Rent	21.8149	178.64	178.64	168.87	+ 0.00	+ 5.79
52 Construction Input Items	0.5623	248.07	247.05	240.99	+ 0.41	+ 2.94
53 Construction Wage Rates	0.3331	230.47	230.10	216.01	+ 0.16	+ 6.69
54 Water Supply	0.4971	163.32	163.32	149.92	+ 0.00	+ 8.94
55 Electricity	4.3985	238.10	238.10	238.10	+ 0.00	+ 0.00
56 Gas	1.5756	158.08	158.08	143.81	+ 0.00	+ 9.92
57 Kerosene Oil	0.0057	194.46	194.70	216.11	- 0.12	- 10.02
58 Firewood Whole	0.2277	284.20	284.20	275.90	+ 0.00	+ 3.01
<u>Furnishing and household equipment maintenance</u>	4.2082	222.31	221.70	214.22	+ 0.28	+ 3.78
59 Furniture	0.3315	212.13	211.78	206.08	+ 0.17	+ 2.94
60 Household Textiles	0.6489	221.72	221.08	211.55	+ 0.29	+ 4.81
61 Household Equipment	0.5936	178.57	178.43	175.47	+ 0.08	+ 1.77
62 Utensils	0.3212	223.28	222.57	216.86	+ 0.32	+ 2.96
63 Plastic Products	0.2547	207.81	207.38	203.54	+ 0.21	+ 2.10
64 Washing Soaps & Detergents	0.7893	228.30	227.15	224.99	+ 0.51	+ 1.47
65 Sewing Needle & Dr Cell	0.1496	208.41	208.27	200.00	+ 0.07	+ 4.21
66 Household Servant	1.0432	249.98	249.34	234.86	+ 0.26	+ 6.44
67 Marriage Hall Charges	0.0762	243.04	243.04	232.28	+ 0.00	+ 4.63
<u>Health</u>	2.1868	189.42	187.84	179.01	+ 0.84	+ 5.82
68 Drugs & Medicines	1.2667	156.31	153.75	148.93	+ 1.67	+ 4.96
69 Medical Equipments	0.0080	236.25	234.15	226.26	+ 0.90	+ 4.42
70 Doctor (MBBS) Clinic Fee	0.5904	260.45	260.45	242.85	+ 0.00	+ 7.25
71 Medical Tests	0.3217	188.31	187.65	179.13	+ 0.35	+ 5.12
<u>Transport</u>	7.2023	170.10	169.78	178.02	+ 0.19	- 4.45
72 Motor Vehicles	0.6630	170.42	167.27	163.39	+ 1.88	+ 4.30
73 Motor Vehicle Accessories	0.2439	214.24	213.84	226.83	+ 0.19	- 5.55
74 Motor Fuel	3.0269	135.58	135.77	153.01	- 0.14	- 11.39
75 Mechanical Service	0.4552	227.40	227.35	216.92	+ 0.02	+ 4.83
76 Motor Vehicle Tax	0.1099	210.18	210.18	210.18	+ 0.00	+ 0.00
77 Transport Services	2.7034	193.40	193.15	197.35	+ 0.13	- 2.00
<u>Communication</u>	3.2198	130.90	130.89	130.36	+ 0.01	+ 0.41
78 Postal Services	0.0662	240.63	240.38	229.93	+ 0.10	+ 4.65
79 Communication & Apparatus	3.1536	128.59	128.59	128.27	+ 0.00	+ 0.25
<u>Recreation and culture</u>	2.0227	195.77	195.67	193.03	+ 0.05	+ 1.42
80 Recreation & Culture	0.8634	128.83	128.84	128.25	- 0.01	+ 0.45
81 Text Books	0.5706	292.41	292.41	290.62	+ 0.00	+ 0.62
82 Newspapers	0.1934	175.49	175.49	175.42	+ 0.00	+ 0.04
83 Stationery	0.3953	212.39	211.89	202.25	+ 0.24	+ 5.01
<u>Education</u>	3.9431	225.17	224.09	209.23	+ 0.48	+ 7.62
84 Education	3.9431	225.17	224.09	209.23	+ 0.48	+ 7.62
<u>Restaurants and hotels</u>	1.2286	265.77	264.37	250.26	+ 0.53	+ 6.20
85 Readymade Food	1.2286	265.77	264.37	250.26	+ 0.53	+ 6.20
<u>Misc. goods and services</u>	2.7550	237.38	235.82	223.88	+ 0.66	+ 6.03
86 Personal Care	1.4935	216.52	215.67	208.36	+ 0.39	+ 3.92
87 Cosmetics	0.3853	200.50	200.22	191.82	+ 0.14	+ 4.53
88 Blades	0.0322	195.93	195.16	188.25	+ 0.39	+ 4.08
89 Personal Equipments	0.8440	292.71	289.27	267.34	+ 1.19	+ 9.49

Annexure B: Wholesale Price Indices by Major Groups & Commodities

(2007-08=100)

Item and Specification	Weight	Index Numbers			% Change in Aug 2016 over			
		Aug 16	Jul 16	Aug 15	Jul 2016	Aug 2015		
General	100.0000	215.75	215.81	208.42	-	0.03	+	3.52
Agriculture Forestry & Fisher	25.7674	251.53	253.54	225.90	-	0.79	+	11.35
001 Wheat	0.6297	204.89	204.39	198.78	+	0.24	+	3.07
002 Maize	0.6764	204.55	204.55	197.89	+	0.00	+	3.37
003 Rice	2.4413	149.84	148.12	157.78	+	1.16	-	5.03
004 Sorghum / Jowar	0.0214	268.83	277.01	340.07	-	2.95	-	20.95
005 Millet / Bajra	0.0374	214.70	218.25	207.85	-	1.63	+	3.30
006 Vegetables	1.2441	342.81	361.19	315.25	-	5.09	+	8.74
007 Fresh Fruits	1.5144	257.27	307.84	279.94	-	16.43	-	8.10
008 Dry Fruits	0.2478	236.23	247.50	238.67	-	4.55	-	1.02
009 Cotton Seeds	1.1511	260.45	273.95	230.46	-	4.93	+	13.01
010 Other Oil Seeds	0.0722	171.21	171.21	162.61	+	0.00	+	5.29
011 Edible Roots / Potatoes	0.2540	251.32	226.53	150.28	+	10.94	+	<u>67.23</u>
012 Stimulant & Spice Crops	0.1634	209.80	209.95	325.37	-	0.07	-	35.52
013 Pulses	0.4901	310.10	313.08	235.92	-	0.95	+	31.44
014 Sugar Crops	1.0725	286.34	286.34	286.29	+	0.00	+	0.02
015 Fibre Crops	5.3169	213.75	203.00	152.62	+	5.30	+	40.05
016 Unmanufactured Tobacco	0.0742	255.93	251.05	226.94	+	1.94	+	12.77
017 Poultry	0.5633	154.96	188.40	199.19	-	17.75	-	22.20
018 Raw Milk from Bovine Animals	7.0279	262.97	261.80	252.90	+	0.45	+	3.98
019 Eggs	0.5034	205.04	185.05	206.09	+	10.80	-	0.51
020 Raw Animal Materials / Wool	0.0351	173.89	173.89	173.66	+	0.00	+	0.13
021 Hides & Fur Skins, Raw	0.4834	150.46	150.46	156.45	+	0.00	-	3.83
022 Fuel Wood in Logs	0.0179	264.77	264.77	261.39	+	0.00	+	1.29
023 Fish Live Fresh or Chilled	1.7295	469.80	469.80	339.60	+	0.00	+	38.34
Ores/Minerals, Elec., Gas & W	12.0389	241.26	241.43	244.06	-	0.07	-	1.15
024 Coal not Agglomerated	0.7508	152.94	152.94	223.53	+	0.00	-	31.58
025 Natural Gas Liquified	5.7385	207.95	208.30	199.75	-	0.17	+	4.11
026 Salt & Pure Sodium Chloride	0.0584	254.33	254.33	252.31	+	0.00	+	0.80
027 Electrical Energy	5.4912	288.00	288.00	293.09	+	0.00	-	1.74
Food, Beverages, Tobacco, Textil	31.1122	225.84	223.61	210.52	+	1.00	+	7.28
Food Products, Beverages &	20.0718	236.76	235.27	224.46	+	0.63	+	5.48
028 Meat of Animals	3.4559	277.40	276.90	263.70	+	0.18	+	5.20
029 Vegetables & Fruit Juice	0.0058	208.88	208.88	200.95	+	0.00	+	3.95
030 Dried Fruits & Nuts	0.1733	238.61	239.77	229.85	-	0.48	+	3.81
031 Fruit Juices	0.3880	182.13	182.12	177.53	+	0.01	+	2.59
032 Vegetable Oils Refined	1.9242	151.32	152.00	152.52	-	0.45	-	0.79
033 Vegetable Ghee	1.5632	121.34	120.58	120.70	+	0.63	+	0.53
034 Oil Cakes	0.9611	235.25	235.62	199.15	-	0.16	+	18.13
035 Processed Liquid Milk	4.4437	252.73	251.20	248.71	+	0.61	+	1.62
036 Milk & Cream in Solid Form	0.0316	221.01	220.87	219.44	+	0.06	+	0.72
037 Ice Cream	0.0047	238.04	238.04	219.91	+	0.00	+	8.24
038 Dairy Products N.E.C	0.0117	248.53	248.53	244.55	+	0.00	+	1.63
039 Wheat Flour	2.3034	193.41	193.90	191.08	-	0.25	+	1.22
040 Other Cereal Flour	0.0604	309.22	309.70	214.97	-	0.15	+	43.84
041 Sugar Refined	1.7975	267.60	254.89	249.46	+	4.99	+	7.27
042 Chocolate	0.0139	99.45	99.45	99.19	+	0.00	+	0.26
043 Sugar Confectionary	0.0738	118.83	118.83	118.04	+	0.00	+	0.67
044 Coffee & Tea	0.7303	230.46	230.02	233.14	+	0.19	-	1.15
045 Spices	0.1449	190.20	190.20	188.81	+	0.00	+	0.74
046 Other Food Products	0.0336	293.85	293.85	292.02	+	0.00	+	0.63
047 Mineral Water	0.0207	196.22	196.22	188.22	+	0.00	+	4.25
048 Beverages	0.6303	172.44	172.44	171.95	+	0.00	+	0.28
049 Tobacco Products	1.2998	435.03	435.03	356.45	+	0.00	+	22.05
Textiles & Apparels	10.3289	206.44	202.64	184.63	+	1.88	+	11.81
050 Cotton Yarn	5.2491	204.03	197.57	167.45	+	3.27	+	21.85
051 Nylon Yarn	0.1719	147.08	147.08	150.22	+	0.00	-	2.09
052 Blended Yarn	0.1689	177.65	177.11	185.58	+	0.30	-	4.27
053 Woven Fabrics	0.0128	279.69	279.69	258.39	+	0.00	+	8.24
054 Cotton Fabrics	0.6343	209.09	208.84	201.65	+	0.12	+	3.69
055 Other Fabrics	1.1016	224.29	222.36	214.27	+	0.87	+	4.68
056 Silk & Reyon Fabrics	0.7350	190.96	190.96	183.23	+	0.00	+	4.22

Annexure B: Wholesale Price Indices by Major Groups & Commodities

(2007-08=100)

Item and Specification	Weight	Index Numbers			% Change in Aug 2016 over	
		Aug 16	Jul 16	Aug 15	Jul 2016	Aug 2015
057 Towels	0.1235	267.20	267.20	267.20	+ 0.00	+ 0.00
058 Blankets	0.0029	243.93	243.93	235.86	+ 0.00	+ 3.42
059 Bed Sheets	0.0913	256.29	256.29	256.29	+ 0.00	+ 0.00
060 Quilts	0.0019	198.00	198.00	196.84	+ 0.00	+ 0.59
061 Woolen Carpets	0.0383	181.55	181.55	132.14	+ 0.00	+ 37.39
062 Synthetic Carpets	0.0566	129.25	129.25	126.27	+ 0.00	+ 2.36
063 Hosiery Products	0.8832	224.73	222.52	220.66	+ 0.99	+ 1.84
064 Readymade Garments	1.0576	200.66	199.61	193.27	+ 0.53	+ 3.82
Leather Products	0.7115	199.41	199.21	193.00	+ 0.10	+ 3.32
065 Leather Without Hair	0.2973	221.97	221.97	212.68	+ 0.00	+ 4.37
066 Other Leather N.E.C	0.2567	207.31	207.31	206.27	+ 0.00	+ 0.50
067 Footwears	0.1575	143.97	143.05	134.22	+ 0.64	+ 7.26
Other Transportable Goods	22.3659	163.50	164.40	180.27	- 0.55	- 9.30
068 Timber	0.0165	220.36	220.36	204.34	+ 0.00	+ 7.84
069 Printing Paper	0.4279	164.90	165.84	164.56	- 0.57	+ 0.21
070 Hard Board	0.1579	197.92	212.50	197.92	- 6.86	+ 0.00
071 Coke	0.2797	163.45	163.45	163.45	+ 0.00	+ 0.00
072 Motor Spirit	1.5336	108.54	108.54	129.65	+ 0.00	- 16.28
073 Diesel Oil	5.2664	144.34	144.34	177.90	+ 0.00	- 18.86
074 Kerosine Oil	0.2151	115.11	115.11	165.55	+ 0.00	- 30.47
075 Furnace Oil	3.2664	75.95	80.24	90.81	- 5.35	- 16.36
076 Mobil Oil	0.7114	196.00	196.00	199.10	+ 0.00	- 1.56
077 Chemicals	1.7720	177.26	178.21	187.61	- 0.53	- 5.52
078 Dyeing Material	0.1539	146.55	146.55	146.55	+ 0.00	+ 0.00
079 Fertilizers	2.8657	226.26	227.23	271.71	- 0.43	- 16.73
080 Pesticides	0.2763	308.79	312.37	306.30	- 1.15	+ 0.81
081 Insecticides	0.1276	137.12	137.30	138.59	- 0.13	- 1.06
082 Paints & Varnishes	0.1916	295.36	295.36	295.36	+ 0.00	+ 0.00
083 Medicines	1.1428	162.78	162.62	145.20	+ 0.10	+ 12.11
084 Soaps & Detergents	0.8168	185.30	185.10	180.05	+ 0.11	+ 2.92
085 Auto Tyres	0.2703	181.25	181.25	191.78	+ 0.00	- 5.49
086 Plastic Products	0.4550	228.35	228.35	228.34	+ 0.00	+ 0.00
087 Glass sheets	0.2089	247.94	233.11	231.30	+ 6.36	+ 7.19
088 Other Glass Articles	0.1635	299.07	299.07	243.63	+ 0.00	+ 22.76
089 Ceramics & Sanitary Fixture	0.0244	233.48	231.59	221.62	+ 0.82	+ 5.35
090 Bricks, Blocks & Tiles	0.1566	218.86	218.73	209.99	+ 0.06	+ 4.22
091 Cement	1.8145	211.14	211.95	206.97	- 0.38	+ 2.01
092 Bed Foam	0.0006	158.83	158.83	156.67	+ 0.00	+ 1.38
093 Matches	0.0505	162.62	162.62	162.62	+ 0.00	+ 0.00
Metal Product, Machinery & Eq	8.7156	172.82	172.94	172.29	- 0.07	+ 0.31
094 Pig Iron	0.0593	128.97	128.97	128.97	+ 0.00	+ 0.00
095 Steel Bar & Sheets	1.4022	122.74	124.34	136.92	- 1.29	- 10.36
096 Pipe Fittings	0.0780	193.63	193.63	192.08	+ 0.00	+ 0.81
097 Steel Products	0.3879	176.99	176.99	173.54	+ 0.00	+ 1.99
098 Engines & Motors	0.0046	109.24	109.24	109.07	+ 0.00	+ 0.16
099 Vacuum Pumps	0.0155	114.95	114.95	115.39	+ 0.00	- 0.38
100 Air Conditioners	0.0049	201.18	201.18	199.53	+ 0.00	+ 0.83
101 Cultivators	0.0551	219.76	219.76	219.76	+ 0.00	+ 0.00
102 Chuff Cutter	0.1293	149.20	149.20	149.20	+ 0.00	+ 0.00
103 Tractors	0.0028	203.68	203.68	214.54	+ 0.00	- 5.06
104 Lathe Machines	0.0525	214.81	208.81	208.81	+ 2.87	+ 2.87
105 Concrete Mixture	0.0107	138.83	138.83	138.83	+ 0.00	+ 0.00
106 Fridge, WashM, SewM, Fans, Iron	1.1645	204.03	204.01	198.62	+ 0.01	+ 2.72
107 Electric Wires	0.0912	195.19	195.19	192.45	+ 0.00	+ 1.42
108 Lighting Equipments	1.4431	172.03	172.03	167.30	+ 0.00	+ 2.83
109 Radio & Television	0.1843	140.42	135.55	126.49	+ 3.59	+ 11.01
110 Motor Vehicles	0.0244	185.25	185.25	183.03	+ 0.00	+ 1.21
111 Motorcycles	0.2570	125.89	125.89	125.89	+ 0.00	+ 0.00
112 Bicycles	3.3483	187.65	187.65	185.63	+ 0.00	+ 1.09