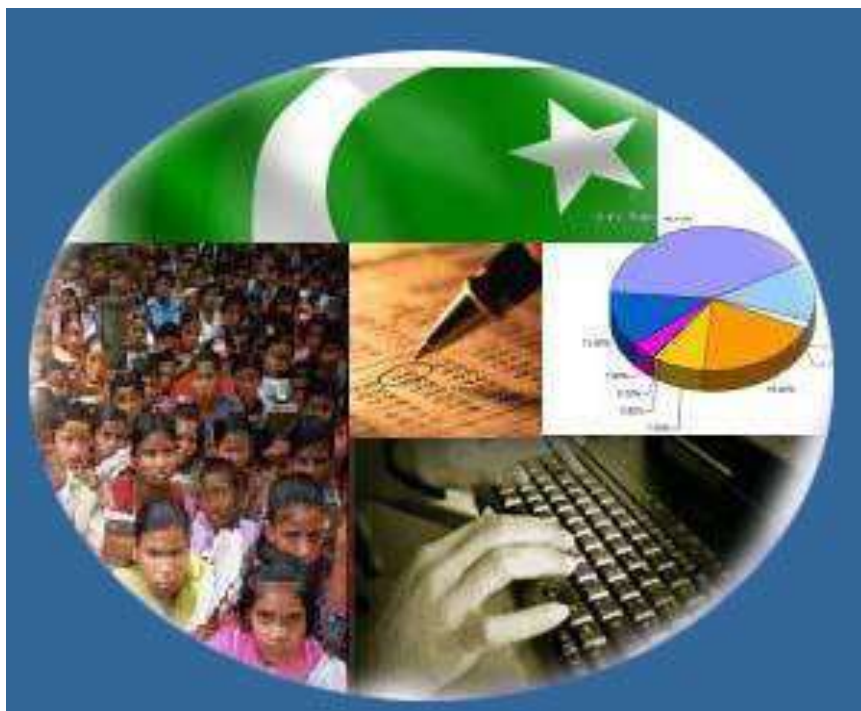




Monthly Review on Price Indices



October, 2015
(Base 2007-08)

Government of Pakistan
Statistics Division
Pakistan Bureau of Statistics
Islamabad

Inflation in Brief

1. CPI inflation, General increased by 1.6% on year-on-year basis in October 2015 as compared to an increase 1.3% in the previous month and 5.8% in October 2014. On month-on-month basis, it increased by 0.5% in October 2015 as compared to decrease of 0.1% in the previous month and increase of 0.2% in October 2014.
2. Core inflation measured by non-food non-energy CPI (Core NFNE) increased by 3.4% on (YoY) basis in October 2015 as compared to increase 3.4% in the previous month and 7.8% in October 2014. On (MoM) basis, it increased by 0.6% in October 2015 as compared to increase of 0.1% in the previous month and 0.7% in October 2014.
3. Core inflation, measured by 20% weighted trimmed mean CPI (Core Trimmed) increased by 2.8% on (YoY) basis in October 2015 as compared to 2.8% in the previous month and by 6.0% in October 2014. On (MoM) basis, it increased by 0.4% in October 2015 as compared to increase of 0.1% in the previous month and 0.4% in October 2014.
4. SPI inflation on YoY decreased by 0.1% in October 2015 as compared to decrease of 1.3% a month earlier and an increase of 4.1% in October 2014. On MoM basis, it increased by 1.2% in October 2015 as compared to a increase of 0.5% a month earlier and no change in October 2014.
5. WPI inflation on YoY basis decreased by 2.7% in October 2015 as compared to decrease of 3.5% a month earlier and an increase of 1.3% in October 2014. WPI inflation on MoM basis increased by 0.5% in October 2015 as compared to decrease of 0.4% a month earlier and 0.3% in October 2014.
6. Figures 1 and 2 show graphically the data of Table 1. Table 1.1 shows "Period Average" and "YoY" percent changes in indices of three years.

Table 1: Inflation (%) (Base 2007-08)

Period	CPI						Core Inflation				SPI**		WPI	
	General		Food		Non-food		NFNE*		Trimmed		YoY	MoM	YoY	MoM
	YoY	MoM	YoY	MoM	YoY	MoM	YoY	MoM	YoY	MoM				
Sep14	7.7	0.4	7.2	0.0	8.0	0.6	8.1	0.7	7.1	0.2	5.4	0.2	2.7	0.2
Oct 14	5.8	0.2	5.2	-0.2	6.3	0.5	7.8	0.7	6.0	0.4	4.1	0.0 ¹	1.3	-0.3
Nov 14	4.0	-0.5	2.1	-0.4	5.4	-0.6	6.9	-0.5	5.3	0.1	-0.3	-1.1	0.0 ²	-1.0
Dec 14	4.3	-1.0	3.4	-2.1	4.9	-0.2	6.7	0.1	5.2	0.0	0.8	-1.5	-0.9	-1.9
Jan 15	3.9	0.1	3.0	-0.5	4.5	0.5	6.4	0.7	4.8	0.3	1.1	-0.9	-2.4	-1.0
Feb 15	3.2	-0.9	2.1	-1.8	4.0	-0.3	6.2	0.0	4.2	-0.2	0.2	-1.0	-3.4	-1.1
Mar 15	2.5	0.2	0.5	0.5	3.9	0.0	5.9	0.1	3.8	0.0	-1.9	0.0	-3.7	0.0 ³
Apr 15	2.1	1.3	0.0	1.4	3.7	1.3	5.4	1.4	3.1	0.6	-1.6	0.4	-2.9	0.9
May 15	3.2	0.8	3.0	1.8	3.3	0.0	4.9	0.0	3.9	0.1	1.2	1.3	-1.8	1.1
Jun-15	3.2	0.6	3.2	1.2	3.2	0.2	4.6	0.1	3.8	0.2	1.1	1.0	-2.0	1.2
Jul-15	1.9	0.4	0.6	0.1	2.8	0.6	4.1	0.6	2.9	0.5	-0.5	0.3	-2.9	-0.4
Aug-15	1.8	0.2	0.4	0.3	2.8	0.2	4.0	0.1	2.8	0.1	-1.5	-0.2	-2.9	-0.5
Sep-15	1.3	-0.1	-0.1	-0.4	2.4	0.1	3.4	0.1	2.8	0.1	-1.3	0.5	-3.5	-0.4
Oct-15	1.6	0.5	0.5	0.4	2.4	0.5	3.4	0.6	2.8	0.4	-0.1	1.2	-2.7	0.5

*NFNE is non-food non-energy, ** SPI for quintile 1 ¹ Actual figure is -0.03, displayed in rounded figure

²Actual figure is 0.02, ³Actual figure is 0.01 displayed in rounded figure

Table 1.1 : Period Average and YoY % Changes of Indices (Base 2007-08)

Index	Averages July-Oct % Changes			Oct over Oct % Changes		
	2015-16	2014-15	2013-14	2015-16	2014-15	2013-14
CPI	1.65	7.09	8.32	1.61	5.82	9.08
SPI	-0.84	5.14	9.80	-0.09	4.12	10.54
WPI	-2.99	3.44	8.31	-2.66	1.27	9.76

Figure 1: CPI Inflation YoY, Special Indices

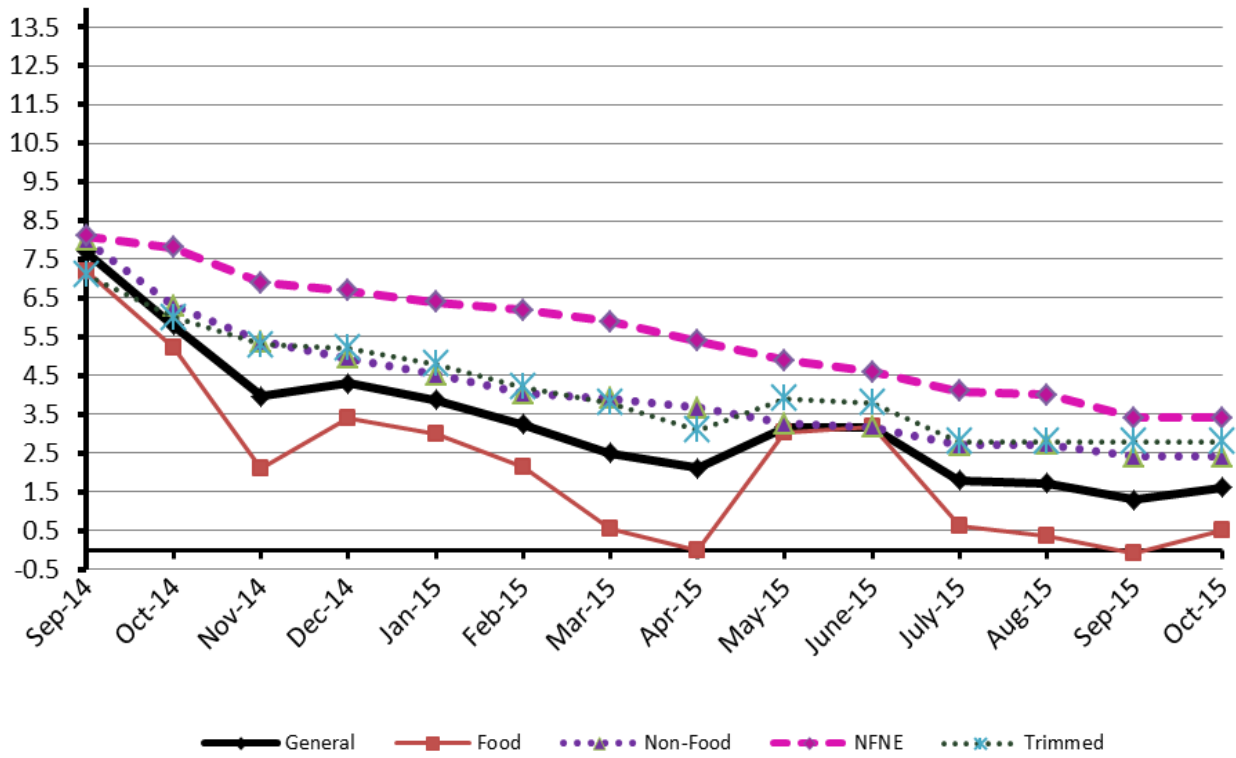
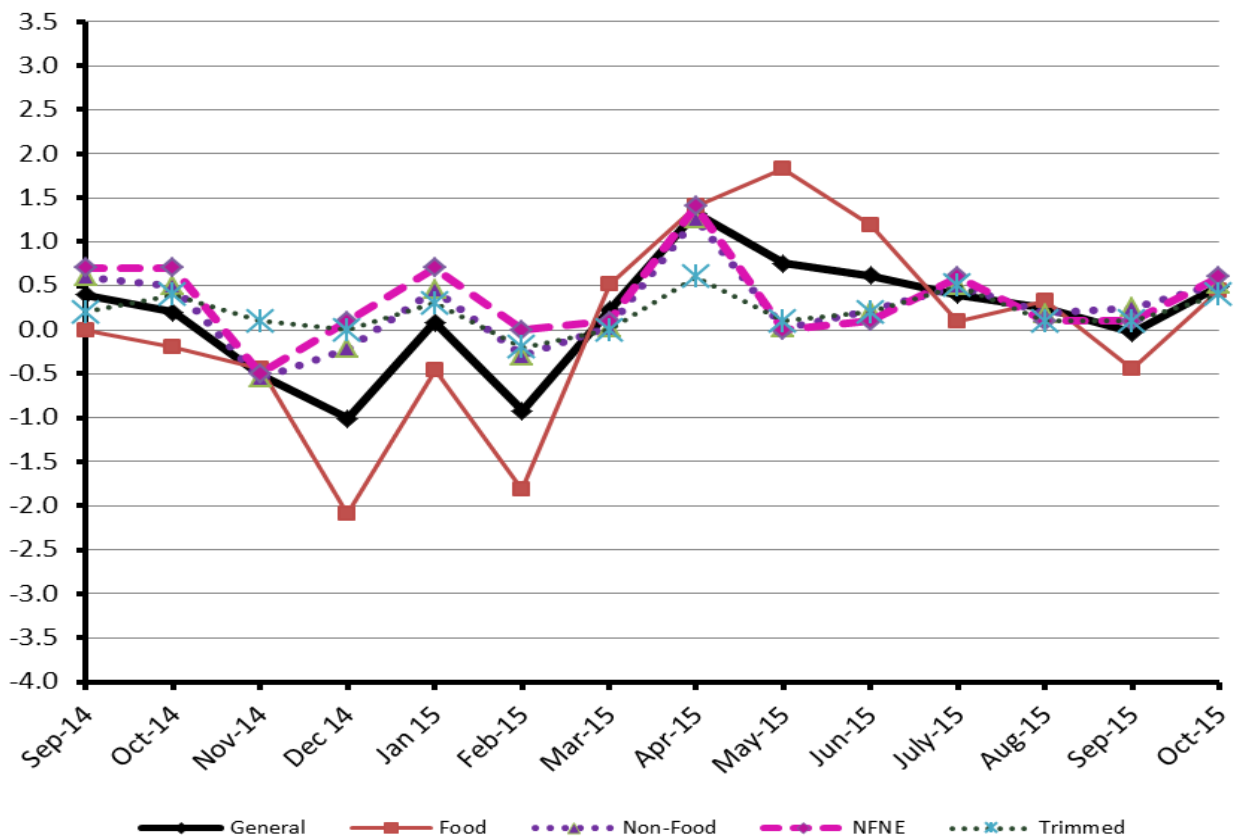


Figure 2: CPI Inflation MoM, Special Indices



II. Consumer Price Index (CPI)

The Consumer Price Index of October, 2015 has increased by 0.49% over September 2015 and increased by 1.61% over corresponding month of the last year, i.e. October 2014.

Table 2 : Consumer Price Index by Group of Commodities and Services (Base 2007-08)

No	Group	Group Weight (%)	Indices			% Change Oct 2015 Over		Impact (In % points) Oct 2015 Over	
			Oct 2015	Sep 2015	Oct 2014	Sep 2015	Oct 2014	Sep 2015	Oct 2014
	General	100.00	203.03	202.04	199.81	0.49	1.61	0.49	1.61
1.	Food & Non-alcoholic Bev.	34.83	220.40	219.41	221.33	0.45	-0.42	0.17	-0.16
	<i>Non-perishable Food Items</i>	29.84	216.59	216.68	216.08	-0.04	0.24	-0.01	0.08
	<i>Perishable Food Items</i>	4.99	243.19	235.70	252.71	3.18	-3.77	0.19	-0.24
2.	Alcoholic Bev.& Tobacco	1.41	309.96	309.97	266.62	0.00	16.26	0.00	0.31
3.	Clothing & Footwear	7.57	221.89	220.68	211.10	0.55	5.11	0.05	0.41
4.	Housing, Water, Electricity, Gas & Fuels	29.41	182.62	181.10	173.39	0.84	5.32	0.22	1.36
5.	Furnishing & Household Equipment Maintenance	4.21	215.49	214.88	207.48	0.28	3.86	0.01	0.17
6.	Health	2.19	179.67	179.51	174.95	0.09	2.70	0.00	0.05
7.	Transport	7.20	175.80	175.60	204.84	0.11	-14.18	0.01	-1.05
8.	Communication	3.22	130.36	130.36	129.85	0.00	0.39	0.00	0.01
9.	Recreation & Culture	2.02	193.55	193.41	189.39	0.07	2.20	0.00	0.04
10.	Education	3.94	209.25	209.22	192.41	0.01	8.75	0.00	0.33
11.	Restaurants & Hotels	1.23	253.30	251.29	242.78	0.80	4.33	0.01	0.06
12.	Miscellaneous	2.76	225.79	224.64	220.36	0.51	2.46	0.02	0.08

Main contributors to month-on-month and year-on-year percentage changes are given below and detail is given in Annexure A.

1. **Month-on-month** Top few commodities which varied from previous month i.e. September 2015 are given below:-

Food Items Increased: Tomatoes (33.96%), Pulse Mash (15.53%), Potatoes (9.85%), onions & Pulse Gram (5.42% each), Besan (4.38%), Gram Whole (3.32%), Wheat (3.19%), Wheat Flour (2.20%), Pulse Moong (1.88%), Milk Powder (1.48%), Dry Fruits (1.13%) and Tea (1.08%).

Decreased: Chicken (8.58%), Eggs (3.93%), Sugar (3.73%), Rice (3.55%) and Cooking Oil (1.96%).

Non-food Items Increased: Woolen Readymade Garments (2.13%), Tailoring (1.80%), Cleaning & Laundry (1.42%), House Rent & Personal Equipment (1.17% each) and Firewood Whole (1.12%).

2. **Year-on-Year:** Top few commodities which varied from previous year i.e. October 2014 are given below:-

Food Items Increased: Pulse Gram (55.48%), Besan (46.16%), Pulse Mash (36.08%), Onions (30.37%), Tea (25.02%), Gram Whole (19.94%), Tomatoes (17.38%) and Cigarettes (16.38%)

Decreased: Potatoes (55.42%), Cooking Oil (16.52%), Rice (16.11%), Chicken (16.07%), Eggs (15.69%) and Vegetable Ghee (12.63%).

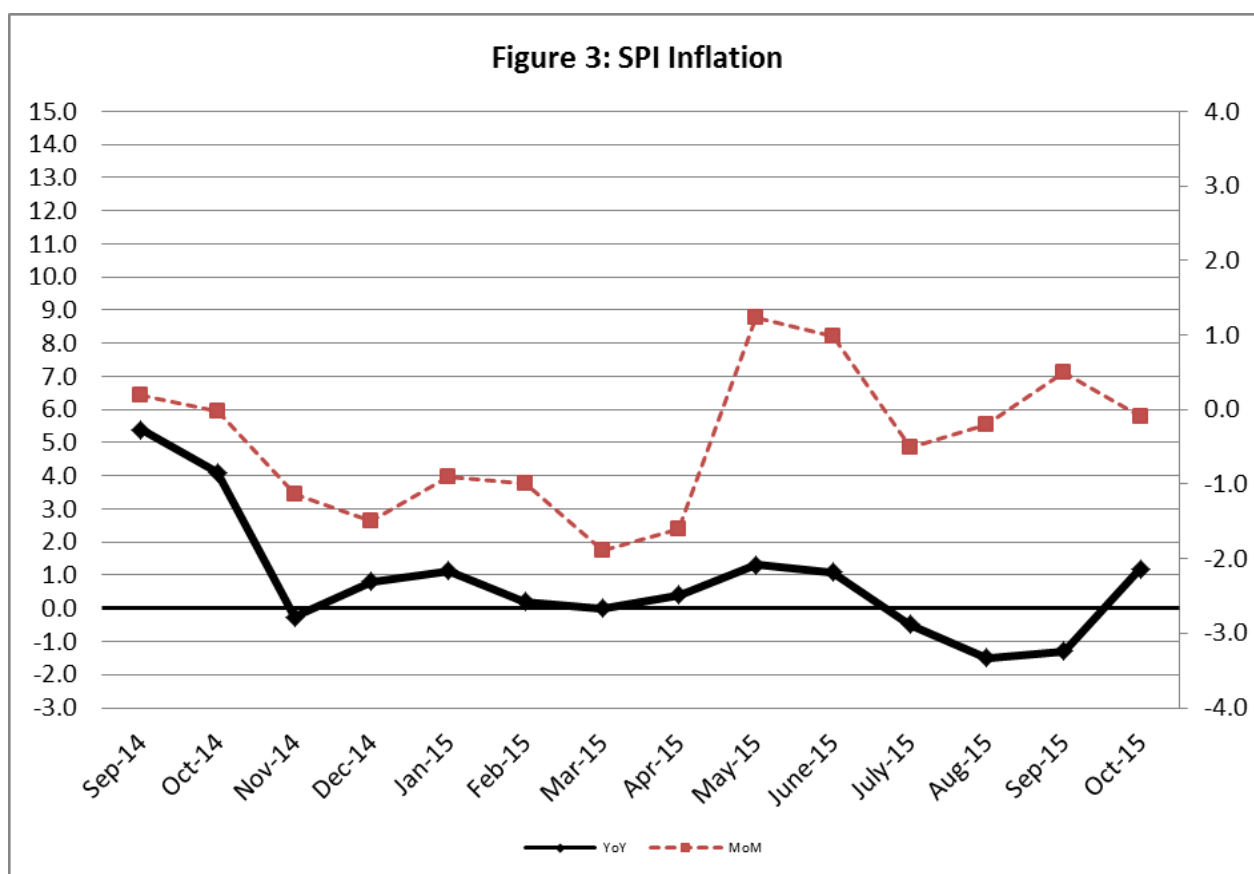
Non-food Items Increased: Woolen Readymade Garments (12.02%) Gas (9.92%), Tailoring (9.72%), Sewing Needle & Dry Cell (9.71%) and Education (8.75%).

Decreased: Kerosene Oil (24.06%), Motor Fuel (21.18%) and Transport Services (14.90%).

III. Sensitive Price Indicator

Quintile-wise percentage changes YoY and MoM are given below in Table 3. The series from September 2014 to October 2015 is also graphed below in Figure 3.

Table 3 : Sensitive Price Indicator (Base 2007-08)					
Quintiles	Indices			% Change October 2015 over	
	October 2015	September 2015	October 2014	September 2015	October 2014
1	209.02	206.58	209.21	1.18	-0.09
2	216.02	213.25	215.07	1.30	0.44
3	216.72	215.45	217.61	0.59	-0.41
4	220.94	219.00	219.21	0.89	0.79
5	217.31	215.80	217.14	0.70	0.08
Combined	217.02	215.23	216.67	0.83	0.16



IV. Wholesale Price Index

The Wholesale Price Index for October 2015 increased by 0.53% over September, 2015. It decreased by 2.66% over the corresponding month of the last year. YoY and MoM movements, from September, 2014 to October 2015 are also graphed below in Figure 4.

Table 4 : Wholesale Price Index by Group of Commodities (Base 2007-08)

No.	Group	Group Weight (%)	Indices			% Change October, 2015 over		Impact (in %age points) October, 2015 over	
			Oct. 2015	Sep. 2015	Oct. 2014	Sep. 2015	Oct. 2014	Sep. 2015	Oct. 2014
	General	100.00	208.69	207.60	214.39	0.53	-2.66	0.53	-2.66
1.	Agriculture, Forestry & Fishery Products	25.77	228.36	223.92	222.72	1.98	2.53	0.55	0.68
2.	Ores & Minerals, Electricity, Gas & Water	12.04	246.91	249.12	244.75	-0.89	0.88	-0.13	0.12
3.	Food Products, Beverages & Tobacco, Textiles, Apparel & Leather Products	31.11	211.04	210.64	208.83	0.19	1.06	0.06	0.32
	i. Food Products, Bev. & Tobacco	20.07	224.28	224.17	217.20	0.05	3.26	0.01	0.66
	ii. Textiles and Apparel	10.33	186.28	185.31	193.45	0.52	-3.71	0.05	-0.35
	iii. Leather Products	0.71	196.88	196.88	195.99	0.00	0.45	0.00	0.00
4.	Other Transportable Goods except Metal Products, Machinery & Equipment	22.37	176.74	176.38	212.36	0.20	-16.77	0.05	-3.72
5.	Metal Products, Machinery & Equipment	8.72	171.31	171.25	172.85	0.04	-0.89	0.00	-0.06

Main contributors to month-on-month and year-on-year percentage changes are given below and detail is given in Annexure B.

1. **Month-on-month** Top few commodities which varied from previous month i.e. September, 2015 are given below:-

Increased: Fiber crops (11.72%), Potatoes (6.65%), Cotton Seeds (6.56%), Oil Cakes (4.40%), Pulses (3.92%), Wheat (3.53%), Furnace Oil (3.46%), Bricks, Blocks & Tiles (3.26%), Wheat Flour (2.87%), Other Cereal Flour (2.67%), Timber (2.47%), Coffee & Tea (2.27%) and Other Oil Seeds (2.13%).

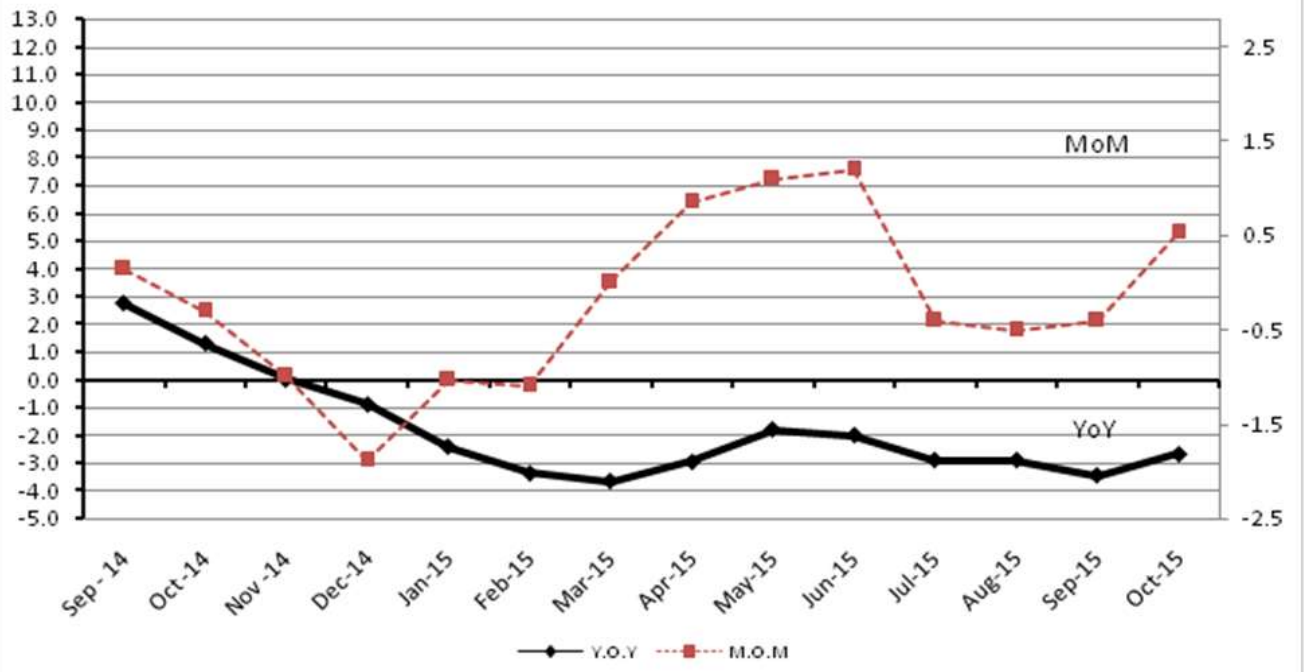
Decreased: Jawar (12.24%), Poultry (8.68%) and Sugar (5.21%).

2. **Year-on-year** Top few commodities which varied from previous year i.e. October, 2014 are given below:-

Increased: Other Cereal Flour (59.89%), Fish (37.10%), Coffee & Tea (31.91%), Cotton Seeds (30.25%), Pulses (25.76%), Tobacco Products (22.69%), Pesticides (17.12%) and Sugar Confectionary (16.18%).

Decreased: Potatoes (65.61%), Furnace Oil (50.38%), Kerosene Oil (45.26%), Diesel (33.15%), Motor Spirit (28.83%), Stimulant & Spice Crops (22.94%) and Insecticides (22.85%).

Figure 4: WPI Inflation



Annexure A: Consumer Price Index Numbers by Commodity Groups & Commodities (2007-08=100)

Item and Specification	Weight	Index Numbers			% Change in Oct 2015 over	
		Oct 15	Sep 15	Oct 14	Sep 2015	Oct 2014
General	100.0000	203.03	202.04	199.81	+ 0.49	+ 1.61
Food and non-alcoholic Bevera	34.8343	220.40	219.41	221.33	+ 0.45	- 0.42
01 Wheat	0.3477	200.07	193.88	210.63	+ 3.19	- 5.01
02 Wheat Flour	4.1648	213.10	208.52	222.81	+ 2.20	- 4.36
03 Wheat Product	0.0959	214.59	212.74	220.03	+ 0.87	- 2.47
04 Besan	0.1500	250.61	240.09	171.46	+ 4.38	+ 46.16
05 Rice	1.5821	164.50	170.56	196.10	- 3.55	- 16.11
06 Cereals	0.1563	244.03	244.01	238.48	+ 0.01	+ 2.33
07 Bakery & Confectionary	1.1550	209.83	209.68	206.17	+ 0.07	+ 1.78
08 Nimco	0.4574	241.54	241.24	237.62	+ 0.12	+ 1.65
09 Meat	2.4303	255.19	254.88	243.17	+ 0.12	+ 4.94
10 Chicken	1.3596	143.98	157.49	171.55	- 8.58	- 16.07
11 Fish	0.2970	214.66	212.73	213.95	+ 0.91	+ 0.33
12 Milk Fresh	6.6800	256.89	256.67	247.00	+ 0.09	+ 4.00
13 Milk Products	0.6338	248.48	248.48	241.78	+ 0.00	+ 2.77
14 Milk Powder	0.1129	230.26	226.90	225.13	+ 1.48	+ 2.28
15 Eggs	0.4555	181.97	189.42	215.84	- 3.93	- 15.69
16 Mustard Oil	0.0952	154.04	153.79	158.89	+ 0.16	- 3.05
17 Cooking Oil	1.7538	135.21	137.91	161.97	- 1.96	- 16.52
18 Vegetable Ghee	2.0714	137.08	138.19	156.90	- 0.80	- 12.63
19 Dry Fruits	0.2543	252.42	249.61	241.48	+ 1.13	+ 4.53
20 Fresh Fruits	1.8649	217.91	219.82	224.17	- 0.87	- 2.79
21 Pulse Masoor	0.2712	199.45	197.64	182.76	+ 0.92	+ 9.13
22 Pulse Moong	0.2336	300.95	295.41	280.50	+ 1.88	+ 7.29
23 Pulse Mash (Washed)	0.2098	308.24	266.81	226.52	+ 15.53	+ 36.08
24 Pulse Gram	0.2361	262.84	249.32	169.05	+ 5.42	+ 55.48
25 Gram Whole	0.1616	214.37	207.48	178.73	+ 3.32	+ 19.94
26 Beans	0.0269	233.73	232.23	244.36	+ 0.65	- 4.35
27 Potatoes	0.4452	207.81	189.18	466.16	+ 9.85	- 55.42
28 Onion	0.5093	326.26	309.49	250.25	+ 5.42	+ 30.37
29 Tomatoes	0.4172	233.56	174.35	198.97	+ 33.96	+ 17.38
30 Fresh Vegetables	1.7543	257.22	258.41	242.35	- 0.46	+ 6.14
31 Sugar	1.0445	221.27	229.84	212.99	- 3.73	+ 3.89
32 Gur	0.0220	291.22	290.46	268.19	+ 0.26	+ 8.59
33 Honey	0.0446	304.38	304.38	299.70	+ 0.00	+ 1.56
34 SweetMeat	0.2483	238.40	238.02	230.79	+ 0.16	+ 3.30
35 Beverages	1.1990	217.86	217.39	207.93	+ 0.22	+ 4.78
36 Jam, Tomato Ketchup & Pickles	0.2454	211.33	211.13	198.66	+ 0.09	+ 6.38
37 Condiments	0.2656	258.82	258.47	251.20	+ 0.14	+ 3.03
38 Spices	0.5441	237.30	238.44	232.46	- 0.48	+ 2.08
39 Tea	0.8377	265.12	262.29	212.06	+ 1.08	+ 25.02
Alcoholic Beverages, Tobacco	1.4135	309.96	309.97	266.62	+ 0.00	+ 16.26
40 Cigarettes	1.3906	311.47	311.47	267.63	+ 0.00	+ 16.38
41 Betel Leaves & Nuts	0.0229	218.45	218.57	205.62	- 0.05	+ 6.24
Clothing and footwear	7.5708	221.89	220.68	211.10	+ 0.55	+ 5.11
42 Cotton Cloth	1.7286	215.33	215.25	206.89	+ 0.04	+ 4.08
43 Woolen Cloth	0.8759	236.95	236.31	229.10	+ 0.27	+ 3.43
44 Readymade Garments	0.9739	226.37	225.96	212.38	+ 0.18	+ 6.59
45 Woolen Readymade Garments	0.3964	245.98	240.86	219.58	+ 2.13	+ 12.02
46 Hosiery	0.5094	235.05	234.19	222.29	+ 0.37	+ 5.74
47 Dopatta	0.4412	234.91	234.33	226.62	+ 0.25	+ 3.66
48 Cleaning and Laundry	0.2110	245.70	242.25	234.46	+ 1.42	+ 4.79
49 Tailoring	0.8840	283.94	278.92	258.78	+ 1.80	+ 9.72
50 Footwear	1.5504	165.10	164.97	164.18	+ 0.08	+ 0.56
Housing, water, Elec., Gas an	29.4149	182.62	181.10	173.39	+ 0.84	+ 5.32
51 House Rent	21.8149	170.85	168.87	162.06	+ 1.17	+ 5.42
52 Construction Input Items	0.5623	241.36	241.38	236.73	- 0.01	+ 1.96
53 Construction Wage Rates	0.3331	220.31	218.33	204.03	+ 0.91	+ 7.98
54 Water Supply	0.4971	149.92	149.92	149.92	+ 0.00	+ 0.00
55 Electricity	4.3985	238.10	238.10	227.44	+ 0.00	+ 4.69
56 Gas	1.5756	158.08	158.08	143.81	+ 0.00	+ 9.92
57 Kerosene Oil	0.0057	208.72	207.65	274.86	+ 0.52	- 24.06
58 Firewood Whole	0.2277	278.99	275.90	266.60	+ 1.12	+ 4.65

Annexure A: Consumer Price Index Numbers by Commodity Groups & Commodities (2007-08=100)

Item and Specification	Weight	Index Numbers			% Change in Oct 2015 over			
		Oct 15	Sep 15	Oct 14	Sep 2015	Oct 2014		
<i>Furnishing and household equi</i>	4.2082	215.49	214.88	207.48	+	0.28	+	3.86
59 Furniture	0.3315	206.70	206.58	198.76	+	0.06	+	3.99
60 Household Textiles	0.6489	213.29	212.12	203.12	+	0.55	+	5.01
61 Household Equipment	0.5936	175.73	175.57	171.71	+	0.09	+	2.34
62 Utensils	0.3212	218.25	217.57	209.01	+	0.31	+	4.42
63 Plastic Products	0.2547	204.85	204.10	198.24	+	0.37	+	3.33
64 Washing Soaps & Detergents	0.7893	225.68	224.73	222.35	+	0.42	+	1.50
65 Sewing Needle & Dr Cell	0.1496	200.81	200.63	183.04	+	0.09	+	9.71
66 Household Servant	1.0432	237.20	236.72	225.87	+	0.20	+	5.02
67 Marriage Hall Charges	0.0762	232.49	232.49	227.81	+	0.00	+	2.05
<i>Health</i>	2.1868	179.67	179.51	174.95	+	0.09	+	2.70
68 Drugs & Medicines	1.2667	149.02	149.01	146.84	+	0.01	+	1.48
69 Medical Equipments	0.0080	226.26	226.26	221.31	+	0.00	+	2.24
70 Doctor (MBBS) Clinic Fee	0.5904	244.44	244.44	236.75	+	0.00	+	3.25
71 Medical Tests	0.3217	180.37	179.27	171.03	+	0.61	+	5.46
<i>Transport</i>	7.2023	175.80	175.60	204.84	+	0.11	-	14.18
72 Motor Vehicles	0.6630	163.02	163.02	163.73	+	0.00	-	0.43
73 Motor Vehicle Accessories	0.2439	227.21	226.83	229.28	+	0.17	-	0.90
74 Motor Fuel	3.0269	147.50	147.25	187.14	+	0.17	-	21.18
75 Mechanical Service	0.4552	218.85	217.59	207.30	+	0.58	+	5.57
76 Motor Vehicle Tax	0.1099	210.18	210.18	210.18	+	0.00	+	0.00
77 Transport Services	2.7034	197.35	197.35	231.90	+	0.00	-	14.90
<i>Communication</i>	3.2198	130.36	130.36	129.85	+	0.00	+	0.39
78 Postal Services	0.0662	229.93	229.93	216.26	+	0.00	+	6.32
79 Communication & Apparatus	3.1536	128.27	128.27	128.04	+	0.00	+	0.18
<i>Recreation and culture</i>	2.0227	193.55	193.41	189.39	+	0.07	+	2.20
80 Recreation & Culture	0.8634	128.26	128.25	127.84	+	0.01	+	0.33
81 Text Books	0.5706	290.62	290.62	280.89	+	0.00	+	3.46
82 Newspapers	0.1934	175.42	175.42	175.42	+	0.00	+	0.00
83 Stationery	0.3953	204.88	204.23	198.56	+	0.32	+	3.18
<i>Education</i>	3.9431	209.25	209.22	192.41	+	0.01	+	8.75
84 Education	3.9431	209.25	209.22	192.41	+	0.01	+	8.75
<i>Restaurants and hotels</i>	1.2286	253.30	251.29	242.78	+	0.80	+	4.33
85 Readymade Food	1.2286	253.30	251.29	242.78	+	0.80	+	4.33
<i>Misc. goods and services</i>	2.7550	225.79	224.64	220.36	+	0.51	+	2.46
86 Personal Care	1.4935	209.29	209.07	204.03	+	0.11	+	2.58
87 Cosmetics	0.3853	193.11	192.70	183.89	+	0.21	+	5.01
88 Blades	0.0322	190.75	190.75	184.82	+	0.00	+	3.21
89 Personal Equipments	0.8440	271.23	268.09	267.26	+	1.17	+	1.49

Annexure B: Wholesale Price Indices by Major Groups & Commodities

(2007-08=100)

Item and Specification	Weight	Index Numbers			% Change in Oct 2015 over		
		Oct 15	Sep 15	Oct 14	Sep 2015	Oct 2014	
General	100.0000	208.69	207.60	214.39	+	0.53	- 2.66
Agriculture Forestry & Fisher	25.7674	228.36	223.92	222.72	+	1.98	+ 2.53
001 Wheat	0.6297	209.37	202.23	215.03	+	3.53	- 2.63
002 Maize	0.6764	191.32	197.73	193.55	-	3.24	- 1.15
003 Rice	2.4413	150.22	154.60	182.99	-	2.83	- 17.91
004 Sorghum / Jowar	0.0214	293.25	334.15	286.45	-	12.24	+ 2.37
005 Millet / Bajra	0.0374	200.68	204.45	177.35	-	1.84	+ 13.15
006 Vegetables	1.2441	331.56	330.75	302.11	+	0.24	+ 9.75
007 Fresh Fruits	1.5144	253.80	249.04	250.21	+	1.91	+ 1.43
008 Dry Fruits	0.2478	238.92	236.68	220.55	+	0.95	+ 8.33
009 Cotton Seeds	1.1511	243.34	228.37	186.82	+	6.56	+ 30.25
010 Other Oil Seeds	0.0722	162.75	159.36	186.54	+	2.13	- 12.75
011 Edible Roots / Potatoes	0.2540	184.04	172.56	535.17	+	6.65	- <u>65.61</u>
012 Stimulant & Spice Crops	0.1634	306.38	318.19	397.61	-	3.71	- 22.94
013 Pulses	0.4901	243.87	234.67	193.91	+	3.92	+ 25.76
014 Sugar Crops	1.0725	286.29	286.29	267.92	+	0.00	+ 6.86
015 Fibre Crops	5.3169	172.23	154.16	170.48	+	11.72	+ 1.03
016 Unmanufactured Tobacco	0.0742	228.38	227.46	208.01	+	0.40	+ 9.79
017 Poultry	0.5633	146.78	160.74	172.75	-	8.68	- 15.03
018 Raw Milk from Bovine Animals	7.0279	254.04	253.18	248.92	+	0.34	+ 2.06
019 Eggs	0.5034	193.56	194.92	218.07	-	0.70	- 11.24
020 Raw Animal Materials / Wool	0.0351	173.66	173.66	173.82	+	0.00	- 0.09
021 Hides & Fur Skins, Raw	0.4834	155.85	156.45	154.93	-	0.38	+ 0.59
022 Fuel Wood in Logs	0.0179	263.57	262.48	246.31	+	0.42	+ 7.01
023 Fish Live Fresh or Chilled	1.7295	339.32	338.86	247.49	+	0.14	+ 37.10
Ores/Minerals, Elec., Gas & W	12.0389	246.91	249.12	244.75	-	0.89	+ 0.88
024 Coal not Agglomerated	0.7508	192.16	235.29	223.53	-	18.33	- 14.03
025 Natural Gas Liquified	5.7385	209.82	208.83	206.65	+	0.47	+ 1.53
026 Salt & Pure Sodium Chloride	0.0584	252.31	252.31	247.16	+	0.00	+ 2.08
027 Electrical Energy	5.4912	293.09	293.09	287.44	+	0.00	+ 1.97
Food, Beverages, Tobacco, Textil	31.1122	211.04	210.64	208.83	+	0.19	+ 1.06
Food Products, Beverages &	20.0718	224.28	224.17	217.20	+	0.05	+ 3.26
028 Meat of Animals	3.4559	266.98	265.13	257.41	+	0.70	+ 3.72
029 Vegetables & Fruit Juice	0.0058	200.95	200.95	196.79	+	0.00	+ 2.11
030 Dried Fruits & Nuts	0.1733	230.84	230.91	222.26	-	0.03	+ 3.86
031 Fruit Juices	0.3880	177.53	177.53	171.93	+	0.00	+ 3.26
032 Vegetable Oils Refined	1.9242	150.19	149.26	163.22	+	0.62	- 7.98
033 Vegetable Ghee	1.5632	118.43	119.21	137.60	-	0.65	- 13.93
034 Oil Cakes	0.9611	202.18	193.65	203.69	+	4.40	- 0.74
035 Processed Liquid Milk	4.4437	247.18	248.71	242.78	-	0.62	+ 1.81
036 Milk & Cream in Solid Form	0.0316	216.39	216.31	221.48	+	0.04	- 2.30
037 Ice Cream	0.0047	219.91	219.91	219.91	+	0.00	+ 0.00
038 Dairy Products N.E.C	0.0117	244.60	244.55	237.45	+	0.02	+ 3.01
039 Wheat Flour	2.3034	197.66	192.14	202.07	+	2.87	- 2.18
040 Other Cereal Flour	0.0604	220.69	214.96	138.03	+	2.67	+ <u>59.89</u>
041 Sugar Refined	1.7975	233.67	246.52	224.22	-	5.21	+ 4.21
042 Chocolate	0.0139	101.06	101.06	99.19	+	0.00	+ 1.89
043 Sugar Confectionary	0.0738	118.83	118.83	102.28	+	0.00	+ 16.18
044 Coffee & Tea	0.7303	246.32	240.86	186.74	+	2.27	+ 31.91
045 Spices	0.1449	188.53	188.73	188.66	-	0.11	- 0.07
046 Other Food Products	0.0336	292.02	292.02	296.60	+	0.00	- 1.54
047 Mineral Water	0.0207	188.35	188.35	185.63	+	0.00	+ 1.47
048 Beverages	0.6303	171.95	171.95	171.52	+	0.00	+ 0.25
049 Tobacco Products	1.2998	356.45	356.45	290.52	+	0.00	+ 22.69
Textiles & Apparels	10.3289	186.28	185.31	193.45	+	0.52	- 3.71
050 Cotton Yarn	5.2491	169.21	167.64	190.52	+	0.94	- 11.19
051 Nylon Yarn	0.1719	147.08	147.08	164.37	+	0.00	- 10.52
052 Blended Yarn	0.1689	183.55	184.15	193.92	-	0.33	- 5.35
053 Woven Fabrics	0.0128	265.37	265.37	237.79	+	0.00	+ 11.60
054 Cotton Fabrics	0.6343	201.65	201.65	200.51	+	0.00	+ 0.57
055 Other Fabrics	1.1016	217.95	217.95	206.11	+	0.00	+ 5.74
056 Silk & Reyon Fabrics	0.7350	186.80	186.80	176.47	+	0.00	+ 5.85
057 Towels	0.1235	267.20	267.20	250.33	+	0.00	+ 6.74

Annexure B: Wholesale Price Indices by Major Groups & Commodities

(2007-08=100)

Item and Specification	Weight	Index Numbers			% Change in Oct 2015 over	
		Oct 15	Sep 15	Oct 14	Sep 2015	Oct 2014
058 Blankets	0.0029	235.86	235.86	230.00	+ 0.00	+ 2.55
059 Bed Sheets	0.0913	256.29	256.29	247.46	+ 0.00	+ 3.57
060 Quilts	0.0019	196.84	196.84	179.47	+ 0.00	+ 9.68
061 Woolen Carpets	0.0383	132.14	132.14	132.14	+ 0.00	+ 0.00
062 Synthetic Carpets	0.0566	126.27	126.27	126.27	+ 0.00	+ 0.00
063 Hosiery Products	0.8832	222.88	220.66	210.35	+ 1.01	+ 5.96
064 Readymade Garments	1.0576	193.27	193.27	186.77	+ 0.00	+ 3.48
Leather Products	0.7115	196.88	196.88	195.99	+ 0.00	+ 0.45
065 Leather Without Hair	0.2973	221.97	221.97	212.86	+ 0.00	+ 4.28
066 Other Leather N.E.C	0.2567	206.27	206.27	214.36	+ 0.00	- 3.77
067 Footwears	0.1575	134.22	134.22	134.22	+ 0.00	+ 0.00
Other Transportable Goods	22.3659	176.74	176.38	212.36	+ 0.20	- 16.77
068 Timber	0.0165	213.18	208.04	189.35	+ 2.47	+ 12.59
069 Printing Paper	0.4279	164.56	164.56	169.34	+ 0.00	- 2.82
070 Hard Board	0.1579	197.92	197.92	229.17	+ 0.00	- 13.64
071 Coke	0.2797	163.45	163.45	163.45	+ 0.00	+ 0.00
072 Motor Spirit	1.5336	124.58	124.58	175.05	+ 0.00	- 28.83
073 Diesel Oil	5.2664	170.11	170.11	254.48	+ 0.00	- 33.15
074 Kerosine Oil	0.2151	152.12	152.12	277.92	+ 0.00	- 45.26
075 Furnace Oil	3.2664	79.32	76.67	159.86	+ 3.46	- <u>50.38</u>
076 Mobil Oil	0.7114	199.78	199.10	201.53	+ 0.34	- 0.87
077 Chemicals	1.7720	186.09	187.25	196.00	- 0.62	- 5.06
078 Dyeing Material	0.1539	146.55	146.55	143.77	+ 0.00	+ 1.93
079 Fertilizers	2.8657	274.03	275.23	270.24	- 0.44	+ 1.40
080 Pesticides	0.2763	312.37	306.30	266.71	+ 1.98	+ 17.12
081 Insecticides	0.1276	138.59	138.59	179.64	+ 0.00	- 22.85
082 Paints & Varnishes	0.1916	295.36	295.36	280.05	+ 0.00	+ 5.47
083 Medicines	1.1428	146.38	145.71	144.59	+ 0.46	+ 1.24
084 Soaps & Detergents	0.8168	180.67	180.67	177.77	+ 0.00	+ 1.63
085 Auto Tyres	0.2703	192.83	192.83	188.28	+ 0.00	+ 2.42
086 Plastic Products	0.4550	231.05	228.35	210.90	+ 1.18	+ 9.55
087 Glass sheets	0.2089	231.30	231.30	209.86	+ 0.00	+ 10.22
088 Other Glass Articles	0.1635	243.63	243.63	227.13	+ 0.00	+ 7.26
089 Ceramics & Sanitary Fixture	0.0244	227.13	227.13	212.17	+ 0.00	+ 7.05
090 Bricks, Blocks & Tiles	0.1566	216.83	209.99	204.18	+ 3.26	+ 6.20
091 Cement	1.8145	206.70	206.87	210.17	- 0.08	- 1.65
092 Bed Foam	0.0006	156.67	156.67	150.83	+ 0.00	+ 3.87
093 Matches	0.0505	162.62	162.62	143.20	+ 0.00	+ 13.56
Metal Product, Machinery & Eq	8.7156	171.31	171.25	172.85	+ 0.04	- 0.89
094 Pig Iron	0.0593	128.97	128.97	128.97	+ 0.00	+ 0.00
095 Steel Bar & Sheets	1.4022	129.32	130.45	150.97	- 0.87	- 14.34
096 Pipe Fittings	0.0780	192.08	192.08	191.94	+ 0.00	+ 0.07
097 Steel Products	0.3879	173.54	173.54	173.74	+ 0.00	- 0.12
098 Engines & Motors	0.0046	109.07	109.07	109.07	+ 0.00	+ 0.00
099 Vacuum Pumps	0.0155	115.39	115.39	115.39	+ 0.00	+ 0.00
100 Air Conditioners	0.0049	200.18	200.18	195.53	+ 0.00	+ 2.38
101 Cultivators	0.0551	219.76	219.76	226.90	+ 0.00	- 3.15
102 Chuff Cutter	0.1293	149.20	149.20	149.20	+ 0.00	+ 0.00
103 Tractors	0.0028	205.43	214.54	214.54	- 4.25	- 4.25
104 Lathe Machines	0.0525	208.81	208.81	208.81	+ 0.00	+ 0.00
105 Concrete Mixture	0.0107	138.83	138.83	138.83	+ 0.00	+ 0.00
106 Fridge, WashM, SewM, Fans, Iron	1.1645	200.25	198.62	196.81	+ 0.82	+ 1.75
107 Electric Wires	0.0912	195.19	192.45	184.79	+ 1.42	+ 5.63
108 Lighting Equipments	1.4431	167.30	167.30	164.95	+ 0.00	+ 1.42
109 Radio & Television	0.1843	126.49	126.49	126.49	+ 0.00	+ 0.00
110 Motor Vehicles	0.0244	183.03	183.03	183.03	+ 0.00	+ 0.00
111 Motorcycles	0.2570	125.89	125.89	126.92	+ 0.00	- 0.81
112 Bicycles	3.3483	185.63	185.63	182.84	+ 0.00	+ 1.53