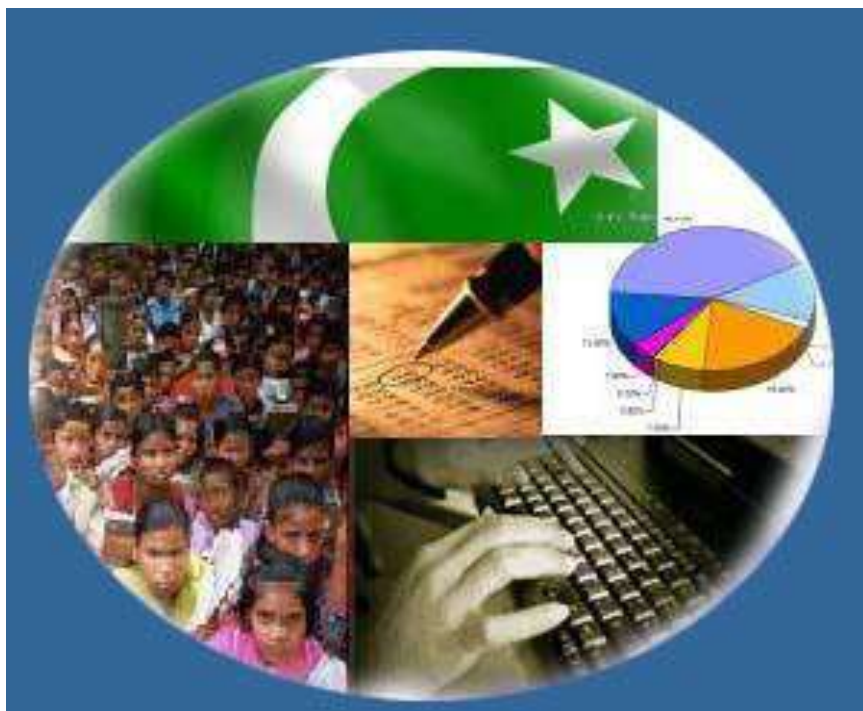




Monthly Review on Price Indices



September, 2015
(Base 2007-08)

Government of Pakistan
Statistics Division
Pakistan Bureau of Statistics
Islamabad

Inflation in Brief

1. CPI inflation, General increased by 1.3% on year-on-year basis in September 2015 as compared to an increase 1.8% in the previous month and 7.7% in September 2014. On month-on-month basis, it decreased by 0.1% in September 2015 as compared to an increase of 0.2% in the previous month and 0.4% in September 2014.
2. Core inflation measured by non-food non-energy CPI (Core NFNE) increased by 3.4% on (YoY) basis in September 2015 as compared to increase 4.0% in the previous month and 8.1% in September 2014. On (MoM) basis, it increased by 0.1% in September 2015 as compared to increase of 0.1% in the previous month and 0.7% in September 2014.
3. Core inflation, measured by 20% weighted trimmed mean CPI (Core Trimmed) increased by 2.8% on (YoY) basis in September 2015 as compared to 2.8% in the previous month and by 7.1% in September 2014. On (MoM) basis, it increased by 0.1% in September 2015 as compared to increase of 0.1% in the previous month and 0.2% in September 2014.
4. SPI inflation on YoY decreased by 1.3% in September 2015 as compared to decrease of 1.5% a month earlier and an increase of 5.4% in September 2014. On MoM basis, it increased by 0.5% in September 2015 as compared to a decrease of 0.2% a month earlier and increase of 0.2% in September 2014.
5. WPI inflation on YoY basis decreased by 3.5% in September 2015 as compared to decrease of 2.9% a month earlier and an increase of 2.7% in September 2014. WPI inflation on MoM basis decreased by 0.4% in September 2015 as compared to decrease of 0.5% a month earlier and an increase of 0.2% in September 2014.
6. Figures 1 and 2 show graphically the data of Table 1. Table 1.1 shows "Period Average" and "YoY" percent changes in indices of three years.

Table 1: Inflation (%) (Base 2007-08)

Period	CPI						Core Inflation				SPI**		WPI	
	General		Food		Non-food		NFNE*		Trimmed		YoY	MoM	YoY	MoM
	YoY	MoM	YoY	MoM	YoY	MoM	YoY	MoM	YoY	MoM				
Aug14	7.0	0.3	5.6	0.6	8.1	0.2	7.9	0.2	7.1	0.2	5.2	0.8	3.3	-0.5
Sep14	7.7	0.4	7.2	0.0	8.0	0.6	8.1	0.7	7.1	0.2	5.4	0.2	2.7	0.2
Oct 14	5.8	0.2	5.2	-0.2	6.3	0.5	7.8	0.7	6.0	0.4	4.1	0.0 ¹	1.3	-0.3
Nov 14	4.0	-0.5	2.1	-0.4	5.4	-0.6	6.9	-0.5	5.3	0.1	-0.3	-1.1	0.0 ²	-1.0
Dec 14	4.3	-1.0	3.4	-2.1	4.9	-0.2	6.7	0.1	5.2	0.0	0.8	-1.5	-0.9	-1.9
Jan 15	3.9	0.1	3.0	-0.5	4.5	0.5	6.4	0.7	4.8	0.3	1.1	-0.9	-2.4	-1.0
Feb 15	3.2	-0.9	2.1	-1.8	4.0	-0.3	6.2	0.0	4.2	-0.2	0.2	-1.0	-3.4	-1.1
Mar 15	2.5	0.2	0.5	0.5	3.9	0.0	5.9	0.1	3.8	0.0	-1.9	0.0	-3.7	0.0 ³
Apr 15	2.1	1.3	0.0	1.4	3.7	1.3	5.4	1.4	3.1	0.6	-1.6	0.4	-2.9	0.9
May 15	3.2	0.8	3.0	1.8	3.3	0.0	4.9	0.0	3.9	0.1	1.2	1.3	-1.8	1.1
Jun-15	3.2	0.6	3.2	1.2	3.2	0.2	4.6	0.1	3.8	0.2	1.1	1.0	-2.0	1.2
Jul-15	1.9	0.4	0.6	0.1	2.8	0.6	4.1	0.6	2.9	0.5	-0.5	0.3	-2.9	-0.4
Aug-15	1.8	0.2	0.4	0.3	2.8	0.2	4.0	0.1	2.8	0.1	-1.5	-0.2	-2.9	-0.5
Sep-15	1.3	-0.1	-0.1	-0.4	2.4	0.1	3.4	0.1	2.8	0.1	-1.3	0.5	-3.5	-0.4

*NFNE is non-food non-energy, ** SPI for quintile 1 ¹ Actual figure is -0.03, displayed in rounded figure

²Actual figure is 0.02, ³Actual figure is 0.01 displayed in rounded figure

Table 1.1 : Period Average and YoY % Changes of Indices (Base 2007-08)

Index	Averages July-Sep % Changes			Sep over Sep % Changes		
	2015-16	2014-15	2013-14	2015-16	2014-15	2013-14
CPI	1.66	7.52	8.06	1.32	7.68	7.39
SPI	-1.09	5.48	9.55	-1.29	5.37	8.81
WPI	-3.10	4.17	7.82	-3.47	2.74	8.65

Figure 1: CPI Inflation YoY, Special Indices

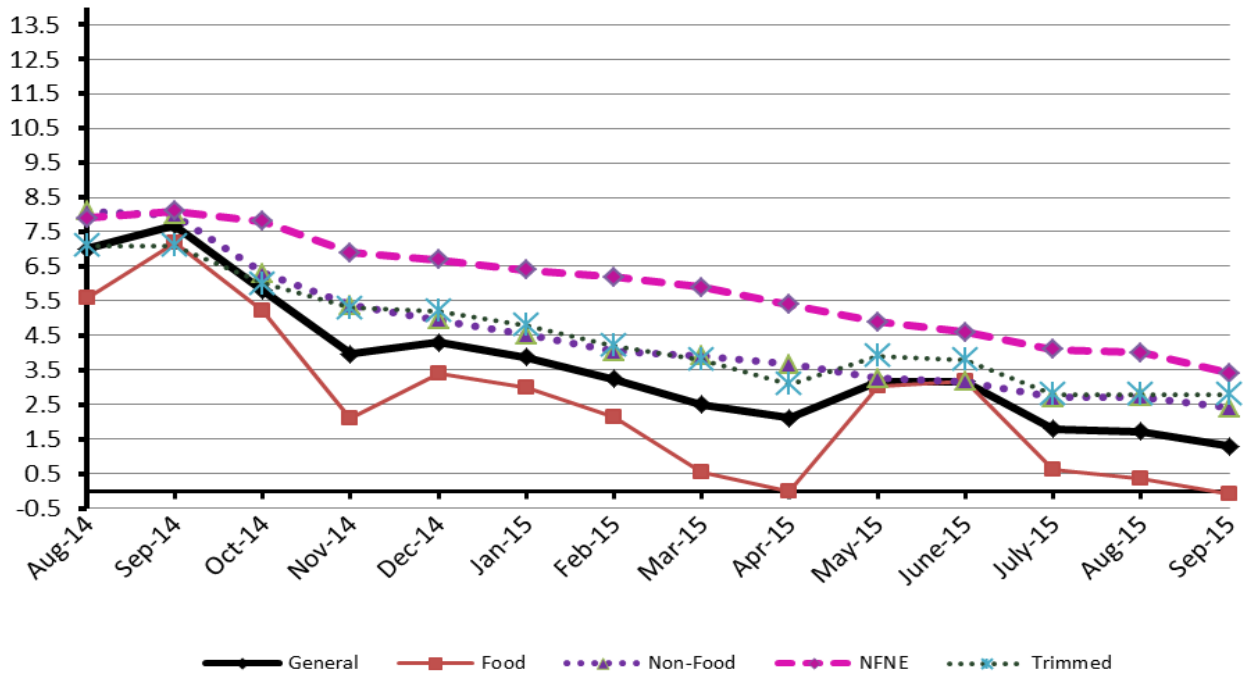
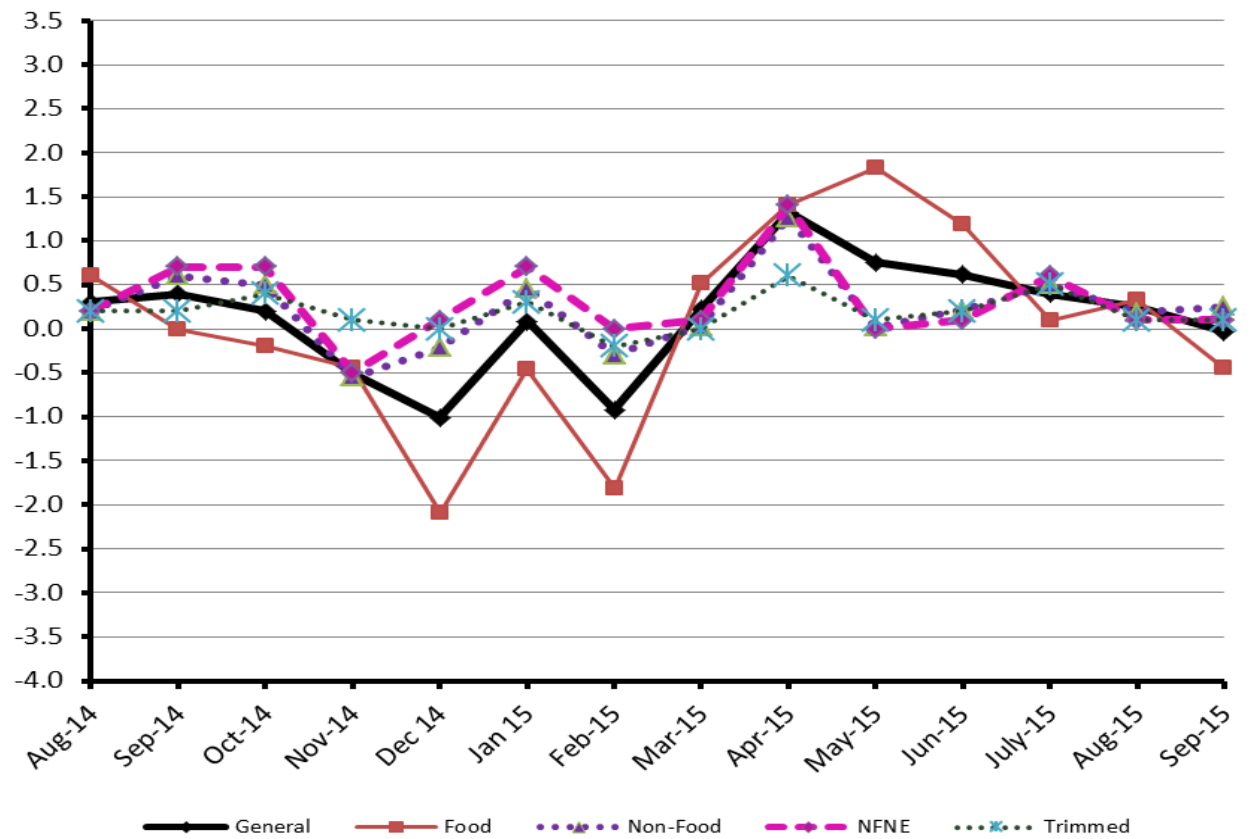


Figure 2: CPI Inflation MoM, Special Indices



II. Consumer Price Index (CPI)

The Consumer Price Index of September, 2015 has decreased by 0.10% over August, 2015 and increased by 1.32% over corresponding month of the last year, i.e. September 2014.

Table 2 : Consumer Price Index by Group of Commodities and Services (Base 2007-08)

No	Group	Group Weight (%)	Indices			% Change Sep 2015 Over		Impact (In % points) Sep 2015 Over	
			Sep 2015	Aug 2015	Sep 2014	Aug 2015	Sep 2014	Aug 2015	Sep 2014
	General	100.00	202.04	202.25	199.40	-0.10	1.32	-0.10	1.32
1.	Food & Non-alcoholic Bev.	34.83	219.41	220.51	221.77	-0.50	-1.06	-0.19	-0.41
	<i>Non-perishable Food Items</i>	29.84	216.68	217.89	215.91	-0.56	0.36	-0.18	0.12
	<i>Perishable Food Items</i>	4.99	235.70	236.16	256.83	-0.19	-8.23	-0.01	-0.53
2.	Alcoholic Bev.& Tobacco	1.41	309.97	309.90	266.59	0.02	16.27	0.00	0.31
3.	Clothing & Footwear	7.57	220.68	220.27	210.97	0.19	4.60	0.02	0.37
4.	Housing, Water, Electricity, Gas & Fuels	29.41	181.10	180.31	171.70	0.44	5.47	0.12	1.39
5.	Furnishing & Household Equipment Maintenance	4.21	214.88	214.22	207.21	0.31	3.70	0.01	0.16
6.	Health	2.19	179.51	179.01	174.47	0.28	2.89	0.01	0.06
7.	Transport	7.20	175.60	178.02	205.10	-1.36	-14.38	-0.09	-1.07
8.	Communication	3.22	130.36	130.36	129.80	0.00	0.43	0.00	0.01
9.	Recreation & Culture	2.02	193.43	193.05	189.34	0.20	2.16	0.00	0.04
10.	Education	3.94	209.22	209.23	191.93	0.00	9.01	0.00	0.34
11.	Restaurants & Hotels	1.23	251.29	250.26	242.00	0.41	3.84	0.01	0.06
12.	Miscellaneous	2.76	224.64	223.88	219.39	0.34	2.39	0.01	0.07

Main contributors to month-on-month and year-on-year percentage changes are given below and detail is given in Annexure A.

1. **Month-on-month** Top few commodities which varied from previous month i.e. August 2015 are given below:-

Food Items Increased: Onions (25.18%), Pulse Mash (4.21%), Tea (4.08%), Potatoes (3.56%), Fresh Vegetables (1.95%), Betel Leaves & Nuts (1.92%), Gur (1.62%) and Pulse Gram (1.47%), Besan (1.35%) and Gram Whole (1.04%).

Decreased: Chicken (17.00%), Tomatoes (11.65%), Fresh Fruits (8.44%), Eggs (3.44%), Cooking Oil (2.59%), Rice (1.99%), Sugar (1.54%) and Vegetable Ghee (1.53%).

Non-food Items Increased: Gas (9.92%), Blades (1.33%), Cleaning & Laundry (1.12%) and Construction Wage Rates (1.07%).

Decreased: Kerosene Oil (3.91%) and Motor Fuel (3.76%).

2. **Year-on-Year:** Top few commodities which varied from previous year i.e. September 2014 are given below:-

Food Items Increased: Pulse Gram (48.98%), Besan (40.50%), Tea (25.01%), Onions (20.61%), Pulse Mash (19.66%), Cigarettes (16.18%) and Gram Whole (15.76%).

Decreased: Potatoes (60.03%), Tomatoes (22.99%), Cooking Oil (14.85%), Rice (12.94%) Chicken (12.07%), Vegetable Ghee (11.82%) and Eggs (11.63%).

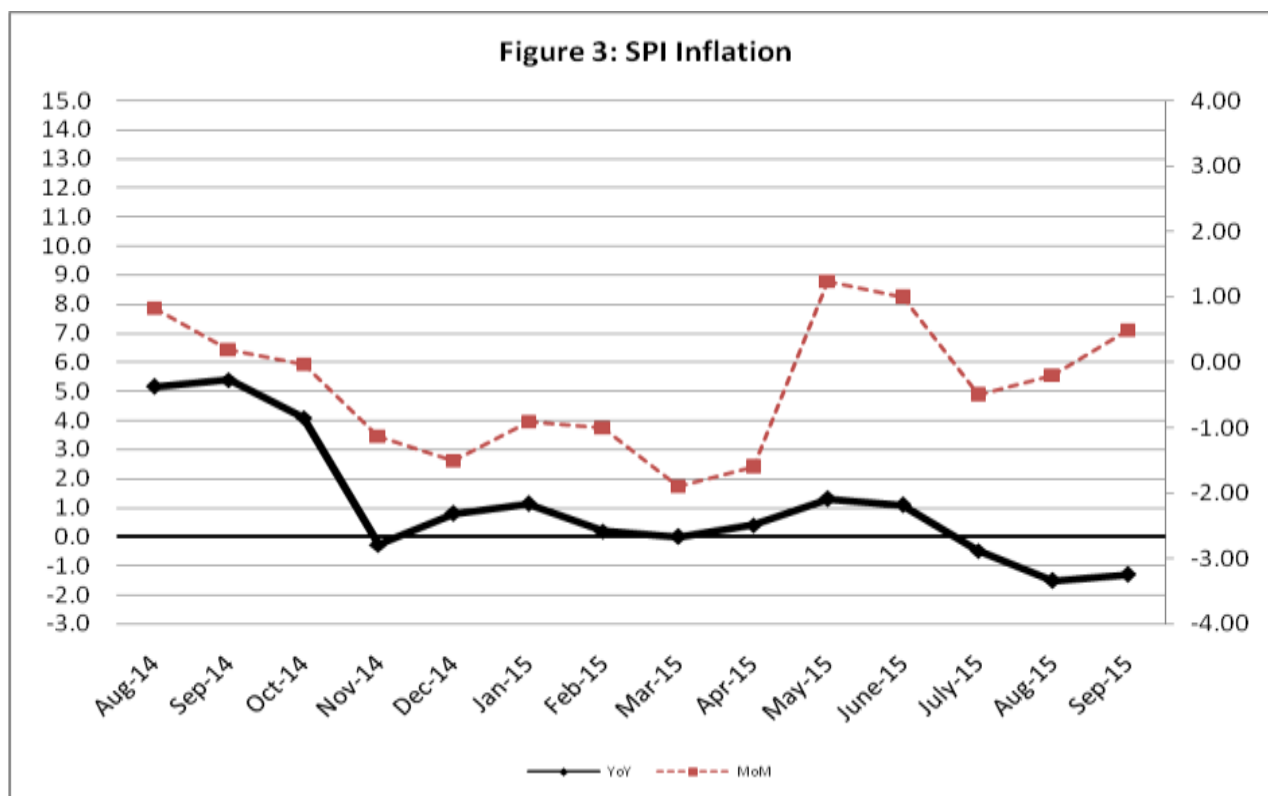
Non-food Items Increased: Woolen Readymade Garments (10.18%) and Sewing Needle & Dry Cell (10.05%).

Decreased: Kerosene Oil (25.48%), Motor Fuel (22.27%) and Transport Services (14.23%).

III. Sensitive Price Indicator

Quintile-wise percentage changes YoY and MoM are given below in Table 3. The series from Aug 2014 to September 2015 is also graphed below in Figure 3.

Table 3 : Sensitive Price Indicator (Base 2007-08)					
Quintiles	Indices			% Change September 2015 over	
	September 2015	August 2015	September 2014	August 2015	September 2014
1	206.58	205.65	209.27	0.45	-1.29
2	213.25	211.92	215.18	0.63	-0.90
3	215.45	215.53	217.82	-0.04	-1.09
4	219.00	217.42	219.55	0.73	-0.25
5	215.80	214.77	217.76	0.48	-0.90
Combined	215.23	214.33	217.06	0.42	-0.84



IV. Wholesale Price Index

The Wholesale Price Index for September 2015 has decreased by 0.39% over August, 2015. It decreased by 3.47% over the corresponding month of the last year. YoY and MoM movements, from August, 2014 to September 2015 are also graphed below in Figure 4.

Table 4 : Wholesale Price Index by Group of Commodities (Base 2007-08)									
No.	Group	Group Weight (%)	Indices			% Change September, 2015 over		Impact (in %age points) September, 2015 over	
			Sep. 2015	Aug. 2015	Sep. 2014	Aug. 2015	Sep. 2014	Aug. 2015	Sep. 2014
	General	100.00	207.60	208.42	215.06	-0.39	-3.47	-0.39	-3.47
1.	Agriculture, Forestry & Fishery Products	25.77	223.92	225.90	225.48	-0.88	-0.69	-0.24	-0.19
2.	Ores & Minerals, Electricity, Gas & Water	12.04	249.12	244.06	242.99	2.07	2.52	0.29	0.34
3.	Food Products, Beverages & Tobacco, Textiles, Apparel & Leather Products	31.11	210.64	210.52	207.86	0.06	1.34	0.02	0.40
	i. Food Products, Bev. & Tobacco	20.07	224.17	224.46	215.76	-0.13	3.90	-0.03	0.79
	ii. Textiles and Apparel	10.33	185.31	184.63	193.42	0.37	-4.19	0.03	-0.39
	iii. Leather Products	0.71	196.88	193.00	194.58	2.01	1.18	0.01	0.01
4.	Other Transportable Goods except Metal Products, Machinery & Equipment	22.37	176.38	180.27	214.53	-2.16	-17.78	-0.42	-3.97
5.	Metal Products, Machinery & Equipment	8.72	171.25	172.29	172.76	-0.60	-0.87	-0.04	-0.06

Main contributors to month-on-month and year-on-year percentage changes are given below and detail is given in Annexure B.

1. **Month-on-month** Top few commodities which varied from previous month i.e. August, 2015 are given below:-

Increased: Potatoes (14.83), Coal (5.26%), Vegetables (4.92%), Natural Gas Liquefied (4.55%), Leather Without Hair (4.37%), Coffee & Tea (3.31%), Woven Fabric (2.70%), and Ceramics & Sanitary Fixture (2.49%)..

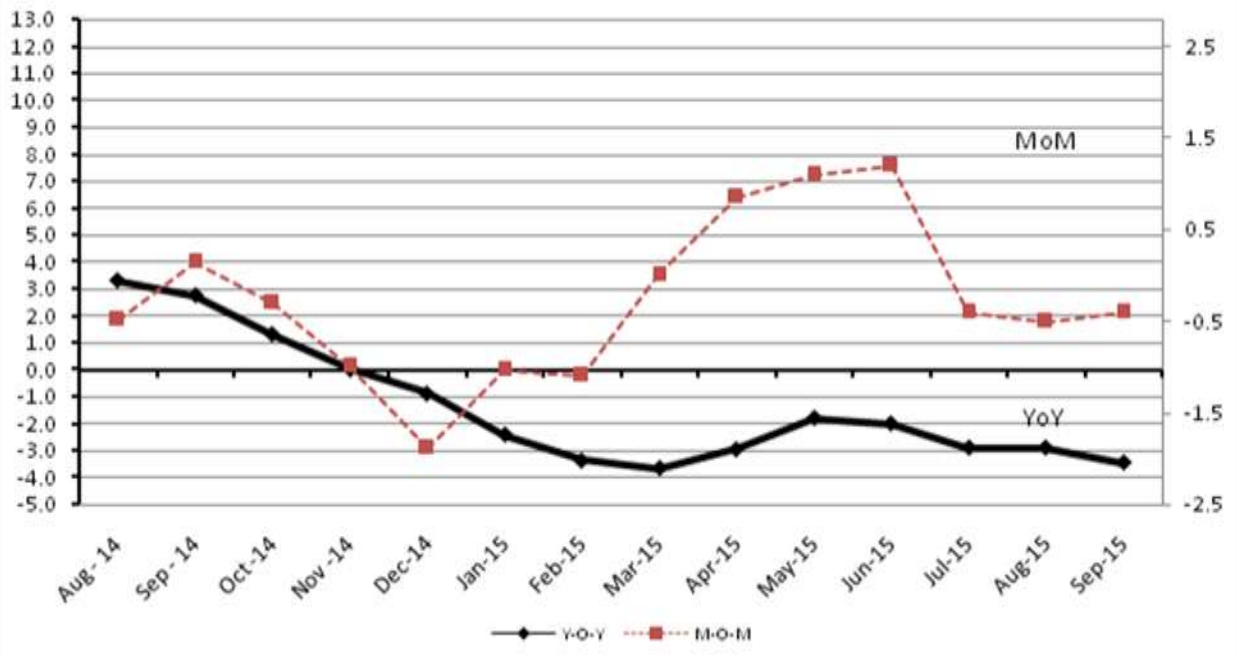
Decreased: Poultry (19.30%), Furnace Oil (15.57%), Fresh Fruits (11.04%), Eggs (5.42%), Steel Bar and Sheets (4.73%), Diesel Oil (4.38).

2. **Year-on-year** Top few commodities which varied from previous year i.e. September, 2014 are given below:-

Increased: Other Cereal Flour (55.80%), Fish (38.64%), Coffee & Tea (31.19%), Tobacco Products (22.69%), Pulses (21.03%), Cotton Seeds (18.84%), Bajra (17.69%), Woven Fabrics (17.00%) and Sugar Confectionary (16.18%)

Decreased: Potatoes (65.80%), Furnace Oil (55.22%), Kerosene Oil (46.01%), Diesel (33.69%), Motor Spirit (30.80%), Insecticides (22.42%), Stimulant & Spice Crops (21.32%), and Fiber Crops (15.61%).

Figure 4: WPI Inflation



Annexure A: Consumer Price Index Numbers by Commodity Groups & Commodities (2007-08=100)

Item and Specification	Weight	Index Numbers			% Change in Sep 2015 over			
		Sep 15	Aug 15	Sep 14	Aug 2015	Sep 2014		
General	100.0000	202.04	202.25	199.40	-	0.10	+	1.32
Food and non-alcoholic Bevera	34.8343	219.41	220.51	221.77	-	0.50	-	1.06
01 Wheat	0.3477	193.88	194.04	209.37	-	0.08	-	7.40
02 Wheat Flour	4.1648	208.52	208.24	222.34	+	0.13	-	6.22
03 Wheat Product	0.0959	212.74	212.75	218.67	+	0.00	-	2.71
04 Besan	0.1500	240.09	236.90	170.88	+	1.35	+	40.50
05 Rice	1.5821	170.56	174.03	195.91	-	1.99	-	12.94
06 Cereals	0.1563	244.01	243.87	238.08	+	0.06	+	2.49
07 Bakery & Confectionary	1.1550	209.68	209.48	206.01	+	0.10	+	1.78
08 Nimco	0.4574	241.24	240.88	235.78	+	0.15	+	2.32
09 Meat	2.4303	254.88	252.42	242.68	+	0.97	+	5.03
10 Chicken	1.3596	157.49	189.75	179.10	-	17.00	-	12.07
11 Fish	0.2970	212.73	211.30	215.15	+	0.68	-	1.12
12 Milk Fresh	6.6800	256.67	255.57	245.51	+	0.43	+	4.55
13 Milk Products	0.6338	248.48	247.22	241.27	+	0.51	+	2.99
14 Milk Powder	0.1129	226.90	227.17	224.30	-	0.12	+	1.16
15 Eggs	0.4555	189.42	196.17	214.36	-	3.44	-	11.63
16 Mustard Oil	0.0952	153.79	153.77	159.12	+	0.01	-	3.35
17 Cooking Oil	1.7538	137.91	141.58	161.97	-	2.59	-	14.85
18 Vegetable Ghee	2.0714	138.19	140.34	156.72	-	1.53	-	11.82
19 Dry Fruits	0.2543	249.61	250.52	237.15	-	0.36	+	5.25
20 Fresh Fruits	1.8649	219.82	240.08	216.18	-	8.44	+	1.68
21 Pulse Masoor	0.2712	197.64	195.95	181.03	+	0.86	+	9.18
22 Pulse Moong	0.2336	295.41	298.00	279.56	-	0.87	+	5.67
23 Pulse Mash (Washed)	0.2098	266.81	256.02	222.97	+	4.21	+	19.66
24 Pulse Gram	0.2361	249.32	245.70	167.35	+	1.47	+	48.98
25 Gram Whole	0.1616	207.48	205.35	179.24	+	1.04	+	15.76
26 Beans	0.0269	232.23	234.52	242.22	-	0.98	-	4.12
27 Potatoes	0.4598	189.18	182.67	473.29	+	3.56	-	<u>60.03</u>
28 Onion	0.5239	309.49	247.23	256.60	+	25.18	+	20.61
29 Tomatoes	0.4318	174.35	197.35	226.41	-	11.65	-	22.99
30 Fresh Vegetables	1.7105	258.41	253.47	250.69	+	1.95	+	3.08
31 Sugar	1.0445	229.84	233.44	218.34	-	1.54	+	5.27
32 Gur	0.0220	290.46	285.83	267.14	+	1.62	+	8.73
33 Honey	0.0446	304.38	304.35	299.51	+	0.01	+	1.63
34 SweetMeat	0.2483	238.02	237.20	229.84	+	0.35	+	3.56
35 Beverages	1.1990	217.39	215.71	209.36	+	0.78	+	3.84
36 Jam, Tomato Ketchup & Pickles	0.2454	211.13	210.53	198.62	+	0.28	+	6.30
37 Condiments	0.2656	258.47	258.10	250.05	+	0.14	+	3.37
38 Spices	0.5441	238.44	238.09	230.32	+	0.15	+	3.53
39 Tea	0.8377	262.29	252.00	209.82	+	4.08	+	25.01
Alcoholic Beverages, Tobacco	1.4135	309.97	309.90	266.59	+	0.02	+	16.27
40 Cigarettes	1.3906	311.47	311.47	267.63	+	0.00	+	16.38
41 Betel Leaves & Nuts	0.0229	218.57	214.46	203.45	+	1.92	+	7.43
Clothing and footwear	7.5708	220.68	220.27	210.97	+	0.19	+	4.60
42 Cotton Cloth	1.7286	215.25	214.33	206.89	+	0.43	+	4.04
43 Woolen Cloth	0.8759	236.31	236.10	228.99	+	0.09	+	3.20
44 Readymade Garments	0.9739	225.96	225.84	212.38	+	0.05	+	6.39
45 Woolen Readymade Garments	0.3964	240.86	240.86	218.60	+	0.00	+	10.18
46 Hosiery	0.5094	234.19	233.85	222.19	+	0.15	+	5.40
47 Dopatta	0.4412	234.33	233.88	226.62	+	0.19	+	3.40
48 Cleaning and Laundry	0.2110	242.25	239.56	233.42	+	1.12	+	3.78
49 Tailoring	0.8840	278.92	278.68	258.78	+	0.09	+	7.78
50 Footwear	1.5504	164.97	164.95	164.05	+	0.01	+	0.56
Housing, water, Elec., Gas an	29.4149	181.10	180.31	171.70	+	0.44	+	5.47
51 House Rent	21.8149	168.87	168.87	159.82	+	0.00	+	5.66
52 Construction Input Items	0.5623	241.38	240.99	236.34	+	0.16	+	2.13
53 Construction Wage Rates	0.3331	218.33	216.01	202.74	+	1.07	+	7.69
54 Water Supply	0.4971	149.92	149.92	149.92	+	0.00	+	0.00
55 Electricity	4.3985	238.10	238.10	227.44	+	0.00	+	4.69

Annexure A: Consumer Price Index Numbers by Commodity Groups & Commodities (2007-08=100)

Item and Specification	Weight	Index Numbers			% Change in Sep 2015 over	
		Sep 15	Aug 15	Sep 14	Aug 2015	Sep 2014
56 Gas	1.5756	158.08	143.81	143.81	+ 9.92	+ 9.92
57 Kerosene Oil	0.0057	207.65	216.11	278.65	- 3.91	- 25.48
58 Firewood Whole	0.2277	275.90	275.90	265.66	+ 0.00	+ 3.85
<i>Furnishing and household equi</i>	4.2082	214.88	214.22	207.21	+ 0.31	+ 3.70
59 Furniture	0.3315	206.58	206.08	198.64	+ 0.24	+ 4.00
60 Household Textiles	0.6489	212.12	211.55	202.95	+ 0.27	+ 4.52
61 Household Equipment	0.5936	175.57	175.47	171.62	+ 0.06	+ 2.30
62 Utensils	0.3212	217.57	216.86	208.66	+ 0.33	+ 4.27
63 Plastic Products	0.2547	204.10	203.54	197.49	+ 0.28	+ 3.35
64 Washing Soaps & Detergents	0.7893	224.73	224.99	221.85	- 0.12	+ 1.30
65 Sewing Needle & Dr Cell	0.1496	200.63	200.00	182.30	+ 0.31	+ 10.05
66 Household Servant	1.0432	236.72	234.86	225.81	+ 0.79	+ 4.83
67 Marriage Hall Charges	0.0762	232.49	232.28	226.93	+ 0.09	+ 2.45
<i>Health</i>	2.1868	179.51	179.01	174.47	+ 0.28	+ 2.89
68 Drugs & Medicines	1.2667	149.01	148.93	146.53	+ 0.05	+ 1.69
69 Medical Equipments	0.0080	226.26	226.26	221.31	+ 0.00	+ 2.24
70 Doctor (MBBS) Clinic Fee	0.5904	244.44	242.85	235.89	+ 0.65	+ 3.62
71 Medical Tests	0.3217	179.27	179.13	170.57	+ 0.08	+ 5.10
<i>Transport</i>	7.2023	175.60	178.02	205.10	- 1.36	- 14.38
72 Motor Vehicles	0.6630	163.02	163.39	163.72	- 0.23	- 0.43
73 Motor Vehicle Accessories	0.2439	226.83	226.83	229.28	+ 0.00	- 1.07
74 Motor Fuel	3.0269	147.25	153.01	189.43	- 3.76	- 22.27
75 Mechanical Service	0.4552	217.59	216.92	207.03	+ 0.31	+ 5.10
76 Motor Vehicle Tax	0.1099	210.18	210.18	210.18	+ 0.00	+ 0.00
77 Transport Services	2.7034	197.35	197.35	230.09	+ 0.00	- 14.23
<i>Communication</i>	3.2198	130.36	130.36	129.85	+ 0.00	+ 0.39
78 Postal Services	0.0662	229.93	229.93	216.26	+ 0.00	+ 6.32
79 Communication & Apparatus	3.1536	128.27	128.27	128.03	+ 0.00	+ 0.19
<i>Recreation and culture</i>	2.0227	193.41	193.03	189.34	+ 0.20	+ 2.15
80 Recreation & Culture	0.8634	128.25	128.25	127.81	+ 0.00	+ 0.34
81 Text Books	0.5706	290.62	290.62	280.89	+ 0.00	+ 3.46
82 Newspapers	0.1934	175.42	175.42	175.42	+ 0.00	+ 0.00
83 Stationery	0.3953	204.23	202.25	198.41	+ 0.98	+ 2.93
<i>Education</i>	3.9431	209.22	209.23	191.93	+ 0.00	+ 9.01
84 Education	3.9431	209.22	209.23	191.93	+ 0.00	+ 9.01
<i>Restaurants and hotels</i>	1.2286	251.29	250.26	242.00	+ 0.41	+ 3.84
85 Readymade Food	1.2286	251.29	250.26	242.00	+ 0.41	+ 3.84
<i>Misc. goods and services</i>	2.7550	224.64	223.88	219.39	+ 0.34	+ 2.39
86 Personal Care	1.4935	209.07	208.36	203.47	+ 0.34	+ 2.75
87 Cosmetics	0.3853	192.70	191.82	183.51	+ 0.46	+ 5.01
88 Blades	0.0322	190.75	188.25	184.82	+ 1.33	+ 3.21
89 Personal Equipments	0.8440	268.09	267.34	265.25	+ 0.28	+ 1.07

Annexure B: Wholesale Price Indices by Major Groups & Commodities

(2007-08=100)

Item and Specification	Weight	Index Numbers			% Change in Sep 2015 over			
		Sep 15	Aug 15	Sep 14	Aug 2015	Sep 2014		
General	100.0000	207.60	208.42	215.06	-	0.39	-	3.47
Agriculture Forestry & Fisher	25.7674	223.92	225.90	225.48	-	0.88	-	0.69
001 Wheat	0.6297	202.23	198.78	214.19	+	1.74	-	5.58
002 Maize	0.6764	197.73	197.89	195.66	-	0.08	+	1.06
003 Rice	2.4413	154.60	157.78	181.27	-	2.02	-	14.71
004 Sorghum / Jowar	0.0214	334.15	340.07	307.35	-	1.74	+	8.72
005 Millet / Bajra	0.0374	204.45	207.85	173.72	-	1.64	+	17.69
006 Vegetables	1.2441	330.75	315.25	322.71	+	4.92	+	2.49
007 Fresh Fruits	1.5144	249.04	279.94	244.99	-	11.04	+	1.65
008 Dry Fruits	0.2478	236.68	238.67	218.98	-	0.83	+	8.08
009 Cotton Seeds	1.1511	228.37	230.46	192.17	-	0.91	+	18.84
010 Other Oil Seeds	0.0722	159.36	162.61	190.46	-	2.00	-	16.33
011 Edible Roots / Potatoes	0.2540	172.56	150.28	504.54	+	14.83	-	<u>65.80</u>
012 Stimulant & Spice Crops	0.1634	318.19	325.37	404.43	-	2.21	-	21.32
013 Pulses	0.4901	234.67	235.92	193.89	-	0.53	+	21.03
014 Sugar Crops	1.0725	286.29	286.29	267.92	+	0.00	+	6.86
015 Fibre Crops	5.3169	154.16	152.62	182.68	+	1.01	-	15.61
016 Unmanufactured Tobacco	0.0742	227.46	226.94	207.00	+	0.23	+	9.88
017 Poultry	0.5633	160.74	199.19	180.11	-	19.30	-	10.75
018 Raw Milk from Bovine Animals	7.0279	253.18	252.90	248.75	+	0.11	+	1.78
019 Eggs	0.5034	194.92	206.09	217.31	-	5.42	-	10.30
020 Raw Animal Materials / Wool	0.0351	173.66	173.66	162.90	+	0.00	+	6.61
021 Hides & Fur Skins, Raw	0.4834	156.45	156.45	145.38	+	0.00	+	7.61
022 Fuel Wood in Logs	0.0179	262.48	261.39	243.47	+	0.42	+	7.81
023 Fish Live Fresh or Chilled	1.7295	338.86	339.60	244.41	-	0.22	+	38.64
Ores/Minerals, Elec., Gas & W	12.0389	249.12	244.06	242.99	+	2.07	+	2.52
024 Coal not Agglomerated	0.7508	235.29	223.53	223.53	+	5.26	+	5.26
025 Natural Gas Liquified	5.7385	208.83	199.75	202.94	+	4.55	+	2.90
026 Salt & Pure Sodium Chloride	0.0584	252.31	252.31	248.50	+	0.00	+	1.53
027 Electrical Energy	5.4912	293.09	293.09	287.44	+	0.00	+	1.97
Food, Beverages, Tobacco, Textil	31.1122	210.64	210.52	207.86	+	0.06	+	1.34
Food Products, Beverages &	20.0718	224.17	224.46	215.76	-	0.13	+	3.90
028 Meat of Animals	3.4559	265.13	263.70	256.74	+	0.54	+	3.27
029 Vegetables & Fruit Juice	0.0058	200.95	200.95	194.12	+	0.00	+	3.52
030 Dried Fruits & Nuts	0.1733	230.91	229.85	219.98	+	0.46	+	4.97
031 Fruit Juices	0.3880	177.53	177.53	171.34	+	0.00	+	3.61
032 Vegetable Oils Refined	1.9242	149.26	152.52	162.58	-	2.14	-	8.19
033 Vegetable Ghee	1.5632	119.21	120.70	139.10	-	1.23	-	14.30
034 Oil Cakes	0.9611	193.65	199.15	208.10	-	2.76	-	6.94
035 Processed Liquid Milk	4.4437	248.71	248.71	234.27	+	0.00	+	6.16
036 Milk & Cream in Solid Form	0.0316	216.31	219.44	219.41	-	1.43	-	1.41
037 Ice Cream	0.0047	219.91	219.91	219.91	+	0.00	+	0.00
038 Dairy Products N.E.C	0.0117	244.55	244.55	235.94	+	0.00	+	3.65
039 Wheat Flour	2.3034	192.14	191.08	200.80	+	0.55	-	4.31
040 Other Cereal Flour	0.0604	214.96	214.97	137.97	+	0.00	+	<u>55.80</u>
041 Sugar Refined	1.7975	246.52	249.46	231.31	-	1.18	+	6.58
042 Chocolate	0.0139	101.06	99.19	99.19	+	1.89	+	1.89
043 Sugar Confectionary	0.0738	118.83	118.04	102.28	+	0.67	+	16.18
044 Coffee & Tea	0.7303	240.86	233.14	183.60	+	3.31	+	31.19
045 Spices	0.1449	188.73	188.81	191.60	-	0.04	-	1.50
046 Other Food Products	0.0336	292.02	292.02	296.10	+	0.00	-	1.38
047 Mineral Water	0.0207	188.35	188.22	185.63	+	0.07	+	1.47
048 Beverages	0.6303	171.95	171.95	169.40	+	0.00	+	1.51
049 Tobacco Products	1.2998	356.45	356.45	290.52	+	0.00	+	22.69
Textiles & Apparels	10.3289	185.31	184.63	193.42	+	0.37	-	4.19
050 Cotton Yarn	5.2491	167.64	167.45	192.90	+	0.11	-	13.09
051 Nylon Yarn	0.1719	147.08	150.22	164.84	-	2.09	-	10.77
052 Blended Yarn	0.1689	184.15	185.58	193.92	-	0.77	-	5.04
053 Woven Fabrics	0.0128	265.37	258.39	226.82	+	2.70	+	17.00
054 Cotton Fabrics	0.6343	201.65	201.65	196.81	+	0.00	+	2.46

Annexure B: Wholesale Price Indices by Major Groups & Commodities

(2007-08=100)

Item and Specification	Weight	Index Numbers			% Change in Sep 2015 over	
		Sep 15	Aug 15	Sep 14	Aug 2015	Sep 2014
055 Other Fabrics	1.1016	217.95	214.27	203.01	+ 1.72	+ 7.36
056 Silk & Reyon Fabrics	0.7350	186.80	183.23	175.35	+ 1.95	+ 6.53
057 Towels	0.1235	267.20	267.20	246.16	+ 0.00	+ 8.55
058 Blankets	0.0029	235.86	235.86	223.55	+ 0.00	+ 5.51
059 Bed Sheets	0.0913	256.29	256.29	242.12	+ 0.00	+ 5.85
060 Quilts	0.0019	196.84	196.84	177.63	+ 0.00	+ 10.81
061 Woolen Carpets	0.0383	132.14	132.14	132.14	+ 0.00	+ 0.00
062 Synthetic Carpets	0.0566	126.27	126.27	126.27	+ 0.00	+ 0.00
063 Hosiery Products	0.8832	220.66	220.66	208.91	+ 0.00	+ 5.62
064 Readymade Garments	1.0576	193.27	193.27	183.14	+ 0.00	+ 5.53
Leather Products	0.7115	196.88	193.00	194.58	+ 2.01	+ 1.18
065 Leather Without Hair	0.2973	221.97	212.68	212.86	+ 4.37	+ 4.28
066 Other Leather N.E.C	0.2567	206.27	206.27	210.44	+ 0.00	- 1.98
067 Footwears	0.1575	134.22	134.22	134.22	+ 0.00	+ 0.00
Other Transportable Goods	22.3659	176.38	180.27	214.53	- 2.16	- 17.78
068 Timber	0.0165	208.04	204.34	188.95	+ 1.81	+ 10.10
069 Printing Paper	0.4279	164.56	164.56	169.34	+ 0.00	- 2.82
070 Hard Board	0.1579	197.92	197.92	229.17	+ 0.00	- 13.64
071 Coke	0.2797	163.45	163.45	163.45	+ 0.00	+ 0.00
072 Motor Spirit	1.5336	124.58	129.65	180.02	- 3.91	- 30.80
073 Diesel Oil	5.2664	170.11	177.90	256.53	- 4.38	- 33.69
074 Kerosine Oil	0.2151	152.12	165.55	281.74	- 8.11	- 46.01
075 Furnace Oil	3.2664	76.67	90.81	171.21	- 15.57	- <u>55.22</u>
076 Mobil Oil	0.7114	199.10	199.10	201.17	+ 0.00	- 1.03
077 Chemicals	1.7720	187.25	187.61	195.25	- 0.19	- 4.10
078 Dyeing Material	0.1539	146.55	146.55	143.77	+ 0.00	+ 1.93
079 Fertilizers	2.8657	275.23	271.71	271.20	+ 1.30	+ 1.49
080 Pesticides	0.2763	306.30	306.30	266.71	+ 0.00	+ 14.84
081 Insecticides	0.1276	138.59	138.59	178.63	+ 0.00	- 22.42
082 Paints & Varnishes	0.1916	295.36	295.36	279.37	+ 0.00	+ 5.72
083 Medicines	1.1428	145.71	145.20	145.03	+ 0.35	+ 0.47
084 Soaps & Detergents	0.8168	180.67	180.05	176.33	+ 0.34	+ 2.46
085 Auto Tyres	0.2703	192.83	191.78	188.28	+ 0.55	+ 2.42
086 Plastic Products	0.4550	228.35	228.34	206.32	+ 0.00	+ 10.68
087 Glass sheets	0.2089	231.30	231.30	209.86	+ 0.00	+ 10.22
088 Other Glass Articles	0.1635	243.63	243.63	218.27	+ 0.00	+ 11.62
089 Ceramics & Sanitary Fixture	0.0244	227.13	221.62	207.26	+ 2.49	+ 9.59
090 Bricks, Blocks & Tiles	0.1566	209.99	209.99	203.25	+ 0.00	+ 3.32
091 Cement	1.8145	206.87	206.97	207.79	- 0.05	- 0.44
092 Bed Foam	0.0006	156.67	156.67	150.83	+ 0.00	+ 3.87
093 Matches	0.0505	162.62	162.62	143.20	+ 0.00	+ 13.56
Metal Product, Machinery & Eq	8.7156	171.25	172.29	172.76	- 0.60	- 0.87
094 Pig Iron	0.0593	128.97	128.97	128.97	+ 0.00	+ 0.00
095 Steel Bar & Sheets	1.4022	130.45	136.92	151.35	- 4.73	- 13.81
096 Pipe Fittings	0.0780	192.08	192.08	191.63	+ 0.00	+ 0.23
097 Steel Products	0.3879	173.54	173.54	172.77	+ 0.00	+ 0.45
098 Engines & Motors	0.0046	109.07	109.07	109.07	+ 0.00	+ 0.00
099 Vacuum Pumps	0.0155	115.39	115.39	115.39	+ 0.00	+ 0.00
100 Air Conditioners	0.0049	200.18	199.53	195.53	+ 0.33	+ 2.38
101 Cultivators	0.0551	219.76	219.76	226.90	+ 0.00	- 3.15
102 Chuff Cutter	0.1293	149.20	149.20	149.20	+ 0.00	+ 0.00
103 Tractors	0.0028	214.54	214.54	214.54	+ 0.00	+ 0.00
104 Lathe Machines	0.0525	208.81	208.81	208.81	+ 0.00	+ 0.00
105 Concrete Mixture	0.0107	138.83	138.83	138.83	+ 0.00	+ 0.00
106 Fridge,WashM,SewM,Fans,Iron	1.1645	198.62	198.62	196.04	+ 0.00	+ 1.32
107 Electric Wires	0.0912	192.45	192.45	184.79	+ 0.00	+ 4.15
108 Lighting Equipments	1.4431	167.30	167.30	164.95	+ 0.00	+ 1.42
109 Radio & Television	0.1843	126.49	126.49	126.49	+ 0.00	+ 0.00
110 Motor Vehicles	0.0244	183.03	183.03	182.59	+ 0.00	+ 0.24
111 Motorcycles	0.2570	125.89	125.89	126.92	+ 0.00	- 0.81
112 Bicycles	3.3483	185.63	185.63	182.84	+ 0.00	+ 1.53