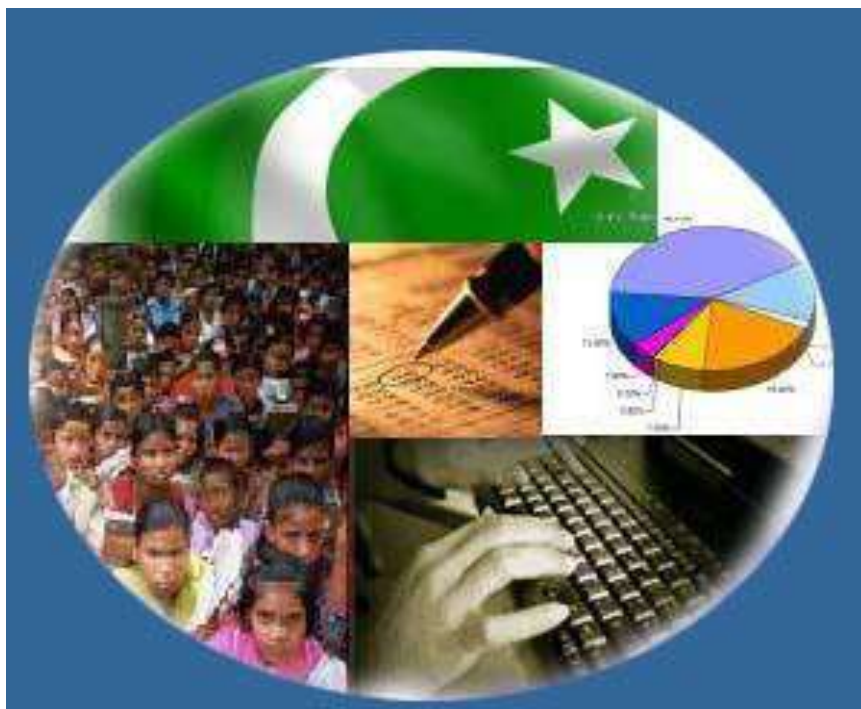




Monthly Review on Price Indices



October, 2014
(Base 2007-08)

Government of Pakistan
Statistics Division
Pakistan Bureau of Statistics
Islamabad

I. Inflation in Brief

1. CPI inflation, General, increased by 5.8% on year-on-year basis in October 2014 as compared to 7.7% in the previous month and by 9.1% in October 2013. On month-on-month basis, it increased by 0.2% in October 2014 as compared to 0.4% in the previous month and increased by 2.0% in October 2013.
2. Core inflation measured by non-food non-energy CPI (Core NFNE) increased by 7.8% on (YoY) basis in October 2014 as compared to 8.1% in the previous month and by 8.4% in October 2013. On (MoM) basis, it increased by 0.7% in October 2014 as compared to 0.7% in the previous month and by 0.9% in October 2013.
3. Core inflation, measured by 20% weighted trimmed mean CPI (Core Trimmed) increased by 6.0% on (YoY) basis in October 2014 as compared to 7.1% in the previous month and by 9.0% in October 2013. On (MoM) basis, it increased by 0.4% in October 2014 as compared to 0.2% in the previous month and by 0.8% in October 2013.
4. SPI inflation on YoY basis increased by 4.1% in October 2014 as compared to 5.4% a month earlier and 10.5% in October 2013. On MoM basis, it is decreased by 0.03% in October 2014 as compared to increase by 0.2% a month earlier and 1.2% in October 2013.
5. WPI inflation on YoY basis increased by 1.3% in October 2014 as compared to 2.7% a month earlier and 9.8% in October 2013. WPI inflation on MoM basis decreased by 0.3% in October 2014 as compared to increase by 0.2% a month earlier and 1.1% in October 2013.
6. Figures 1 and 2 show graphically the data of Table 1. Table 1.1 shows "Period Average" and "YoY" percent changes in indices of three years.

Table 1: Inflation (%) (Base 2007-08)														
Period	CPI						Core Inflation				SPI**		WPI	
	General		Food		Non-food		NFNE*		Trimmed		YoY	MoM	YoY	MoM
	YoY	MoM	YoY	MoM	YoY	MoM	YoY	MoM	YoY	MoM				
Sep 13	7.4	-0.3	7.9	-1.5	7.0	0.6	8.6	0.5	7.6	0.6	8.8	0.1	8.7	0.7
Oct 13	9.1	2.0	9.8	1.7	8.6	2.2	8.4	0.9	9.0	0.8	10.5	1.2	9.8	1.1
Nov 13	10.9	1.3	13.0	2.6	9.4	0.3	8.5	0.3	9.2	0.4	14.1	3.2	10.4	0.2
Dec 13	9.2	-1.3	9.3	-3.3	9.1	0.2	8.2	0.2	8.7	0.4	11.1	-2.5	8.9	-1.0
Jan 14	7.9	0.5	7.2	0.0 ¹	8.4	0.9	8.0	1.0	8.2	0.6	7.7	-1.2	8.1	0.5
Feb 14	7.9	-0.3	7.6	-1.0	8.2	0.2	7.8	0.2	8.1	0.2	7.5	-0.1	7.6	-0.1
Mar 14	8.5	1.0	9.3	2.1	8.0	0.2	7.6	0.3	8.1	0.3	9.0	2.1	7.7	0.3
Apr 14	9.2	1.7	9.9	2.0	8.7	1.5	8.5	1.9	9.0	0.9	9.4	0.1	7.0	0.1
May 14	8.3	-0.3	7.4	-1.2	9.0	0.4	8.7	0.5	8.3	0.3	7.7	-1.5	7.3	-0.1
Jun14	8.2	0.6	7.4	1.0	8.9	0.3	8.7	0.4	7.9	0.3	6.2	1.1	7.7	1.4
Jul 14	7.9	1.7	7.0	2.7	8.5	1.0	8.3	1.1	7.6	0.8	5.9	2.0	6.6	0.5
Aug14	7.0	0.3	5.6	0.6	8.1	0.2	7.9	0.2	7.1	0.2	5.2	0.8	3.3	-0.5
Sep14	7.7	0.4	7.2	0.0	8.0	0.6	8.1	0.7	7.1	0.2	5.4	0.2	2.7	0.2
Oct 14	5.8	0.2	5.2	-0.2	6.3	0.5	7.8	0.7	6.0	0.4	4.1	0.0 ²	1.3	-0.3

*NFNE is non-food non-energy,

** SPI for quintile 1

¹ Actual figure is -0.04, displayed in rounded figure

²Actual figure is -0.03, displayed in rounded figure

Table 1.1 : Period Average and YoY % Changes of Indices (Base 2007-08)						
Index	Averages July-October % Changes			October over October % Changes		
	2014-15	2013-14	2012-13	2014-15	2013-14	2012-13
CPI	7.09	8.32	8.76	5.82	9.08	7.66
SPI	5.14	9.80	7.64	4.12	10.54	6.75
WPI	3.44	8.31	7.58	1.27	9.76	7.55

Figure 1: CPI Inflation YoY, Special Indices

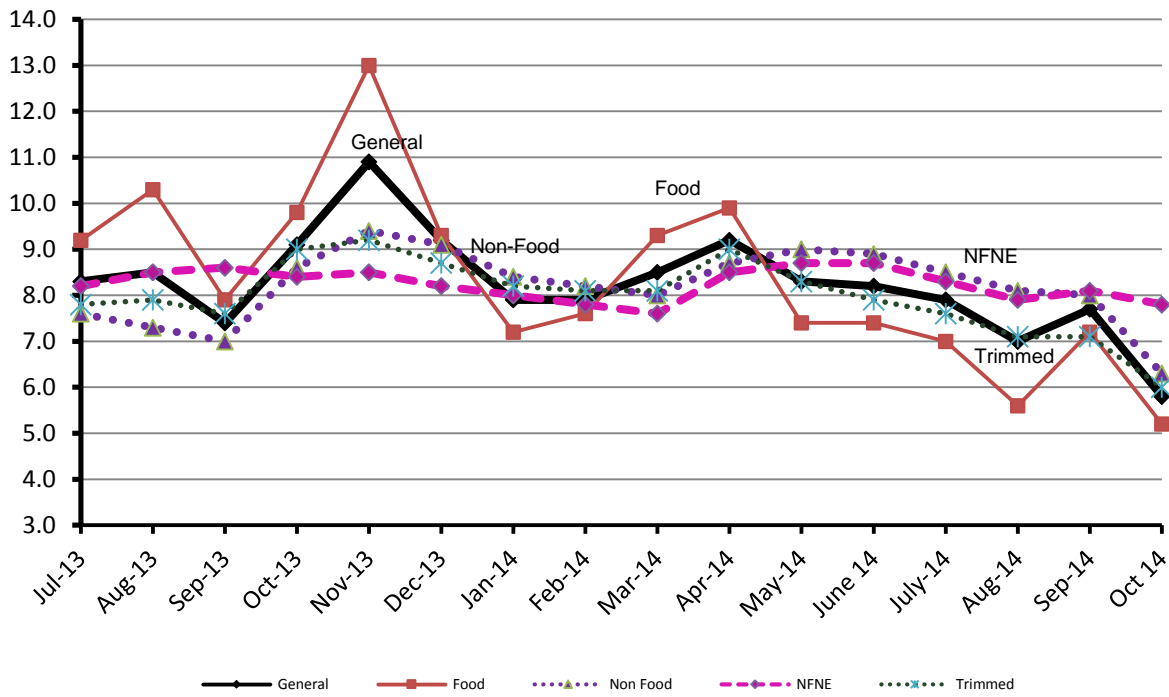
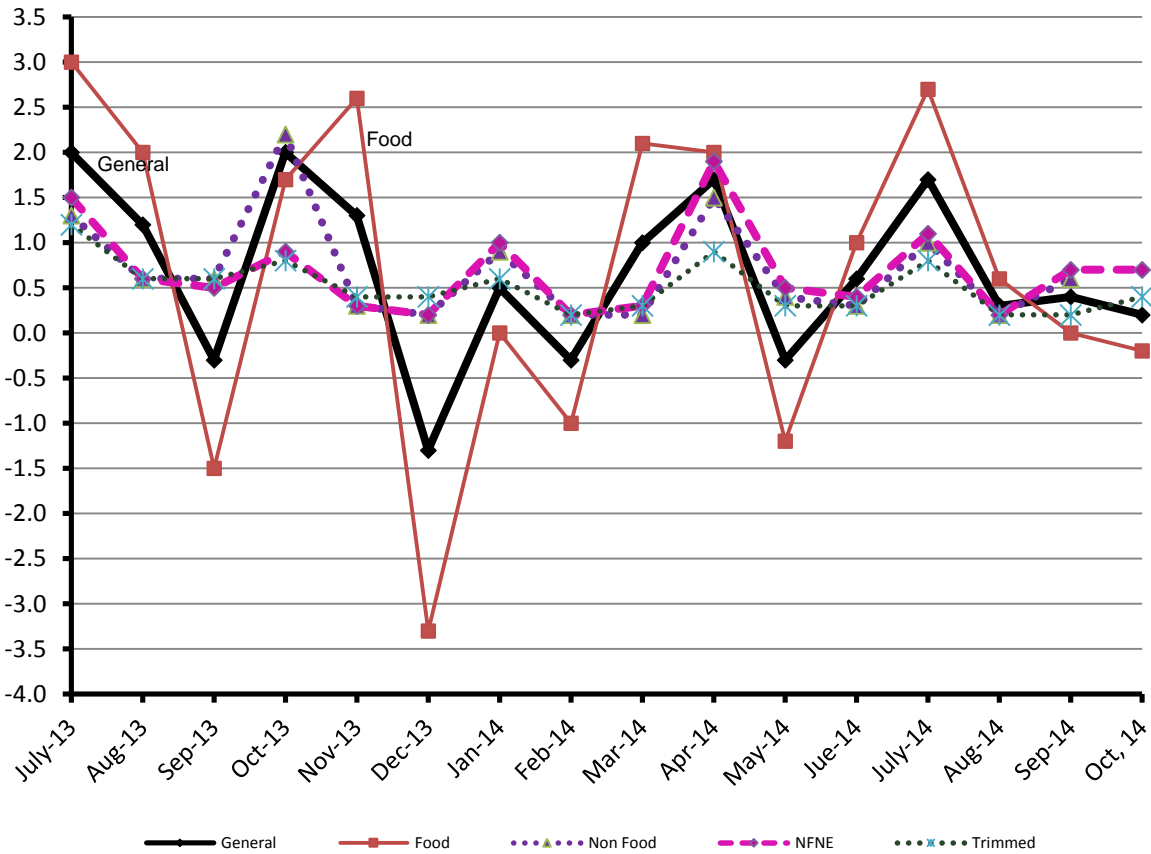


Figure 2: CPI Inflation MoM, Special Indices



II. Consumer Price Index (CPI)

The Consumer Price Index of October, 2014 has increased by 0.21% over September, 2014 and increased by 5.82% over corresponding month of the last year, i.e. October 2013.

Table 2 : Consumer Price Index by Group of Commodities and Services (Base 2007-08)

No	Group	Group Weight (%)	Indices			% Change Oct 2014 Over		Impact (In % points) Oct 2014 Over	
			Oct 2014	Sep 2014	Oct 2013	Sep 2014	Oct 2013	Sep 2014	Oct 2013
	General	100.00	199.81	199.40	188.82	0.21	5.82	0.21	5.82
1.	Food & Non-alcoholic Bev.	34.83	221.33	221.77	211.99	-0.20	4.41	-0.08	1.72
	<i>Non-perishable Food Items</i>	29.84	216.08	215.91	207.13	0.08	4.32	0.03	1.41
	<i>Perishable Food Items</i>	4.99	252.71	256.83	241.04	-1.60	4.84	-0.10	0.31
2.	Alcoholic Bev.& Tobacco	1.41	266.62	266.59	218.25	0.01	22.16	0.00	0.36
3.	Clothing & Footwear	7.57	211.10	210.97	194.51	0.06	8.53	0.00	0.66
4.	Housing, Water, Electricity, Gas & Fuels	29.41	173.39	171.70	164.17	0.98	5.62	0.25	1.44
5.	Furnishing & Household Equipment Maintenance	4.21	207.48	207.21	192.39	0.13	7.84	0.01	0.34
6.	Health	2.19	174.95	174.47	165.15	0.28	5.93	0.01	0.11
7.	Transport	7.20	204.84	205.10	197.06	-0.13	3.95	-0.01	0.30
8.	Communication	3.22	129.85	129.85	129.68	0.00	0.13	0.00	0.00
9.	Recreation & Culture	2.02	189.39	189.34	182.19	0.03	3.95	0.00	0.08
10.	Education	3.94	192.41	191.93	167.91	0.25	14.59	0.01	0.51
11.	Restaurants & Hotels	1.23	242.78	242.00	223.77	0.32	8.50	0.00	0.12
12.	Miscellaneous	2.76	220.36	219.39	208.36	0.44	5.76	0.01	0.17

Main contributors to month-on-month and year-on-year percentage changes are given below and detail is given in Annexure A.

1. **Month-on-month** Top few commodities which varied from previous month i.e. September 2014 are given below:-

Food Items Increased: Fresh Fruits (3.70%), Dry Fruits (1.83%), Pulse Mash (1.59%), Tea and Betel Leaves & Nuts (1.07% each), and Pulse Gram (1.02%).

Decreased: Tomatoes (12.12%), Chicken (4.22%), Fresh Vegetables (3.33%), Onions (2.47%), Sugar (2.45%), and Potatoes (1.51%).

Non-food Items Increased: House Rent (1.40%).

Decreased: Kerosene Oil (1.36%) and Motor Fuel (1.21%).

2. **Year-on-year:** Top few commodities which varied from previous year i.e. October 2013 are given below:-

Food Items Increased: Potatoes (57.95%), Cigarettes (22.38%), Pulse Mash (21.05%), Pulse Moong (20.48%), Honey (14.99%), Fresh Fruits (14.82%) and Pulse Masoor (14.32%).

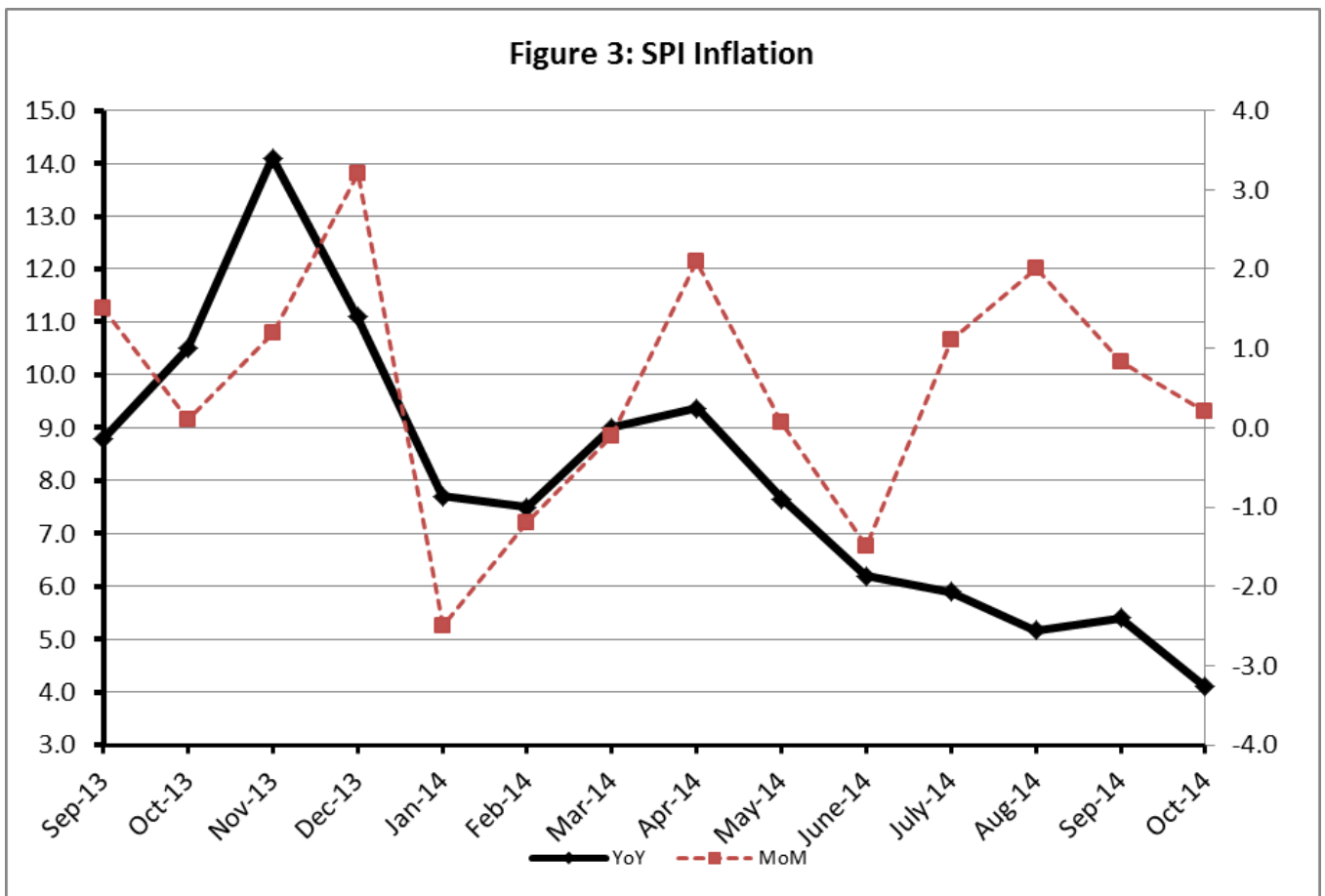
Decreased: Onions (22.43%), Tea (16.48%) and Tomatoes (15.29%).

Non-food Items Increased: Motor Vehicle Tax (36.71%).

III. Sensitive Price Indicator

Quintile-wise percentage changes YoY and MoM are given below in Table 3. The series from September 2013 to October 2014 is also graphed below in Figure 3.

Table 3 : Sensitive Price Indicator (Base 2007-08)					
Quintiles	Indices			% Change October 2014 over	
	October 2014	September 2014	October 2013	September 2014	October 2013
1	209.21	209.27	200.93	-0.03	4.12
2	215.07	215.18	206.51	-0.05	4.15
3	217.61	217.82	207.95	-0.10	4.65
4	219.21	219.55	209.53	-0.15	4.62
5	217.14	217.76	208.61	-0.28	4.09
Combined	216.67	217.06	207.69	-0.18	4.32



IV. Wholesale Price Index

The Wholesale Price Index for October 2014 decreased by 0.31% over September 2014. It is increased by 1.27% over the corresponding month of the last year. YoY and MoM movements, from September 2013 to October 2014 are also graphed below in Figure 4.

Table 4 : Wholesale Price Index by Group of Commodities (Base 2007-08)									
No.	Group	Group Weight (%)	Indices			% Change Oct 2014 over		Impact (in %age points) Oct 2014 over	
			Oct 2014	Sep 2014	Oct 2013	Sep 2014	Oct 2013	Sep 2014	Oct 2013
	General	100.00	214.39	215.06	211.70	-0.31	1.27	-0.31	1.27
1.	Agriculture, Forestry & Fishery Products	25.77	222.72	225.47	220.96	-1.22	0.80	-0.33	0.21
2.	Ores & Minerals, Electricity, Gas & Water	12.04	244.75	242.99	243.64	0.72	0.46	0.10	0.06
3.	Food Products, Beverages & Tobacco, Textiles, Apparel & Leather Products	31.11	208.83	207.86	200.96	0.47	3.92	0.14	1.16
	i. Food Products, Bev. & Tobacco	20.07	217.20	215.75	202.24	0.67	7.40	0.13	1.42
	ii. Textiles and Apparel	10.33	193.45	193.42	199.57	0.02	-3.07	0.00	-0.30
	iii. Leather Products	0.71	195.99	194.58	184.75	0.72	6.08	0.00	0.04
4.	Other Transportable Goods except Metal Products, Machinery & Equipment	22.37	212.36	214.53	216.28	-1.01	-1.81	-0.22	-0.41
5.	Metal Products, Machinery & Equipment	8.72	172.85	172.76	166.77	0.05	3.65	0.00	0.25

Main contributors to month-on-month and year-on-year percentage changes are given below and detail is given in Annexure B.

1. **Month-on-month** Top few commodities which varied from previous month i.e. September, 2014 are given below:-

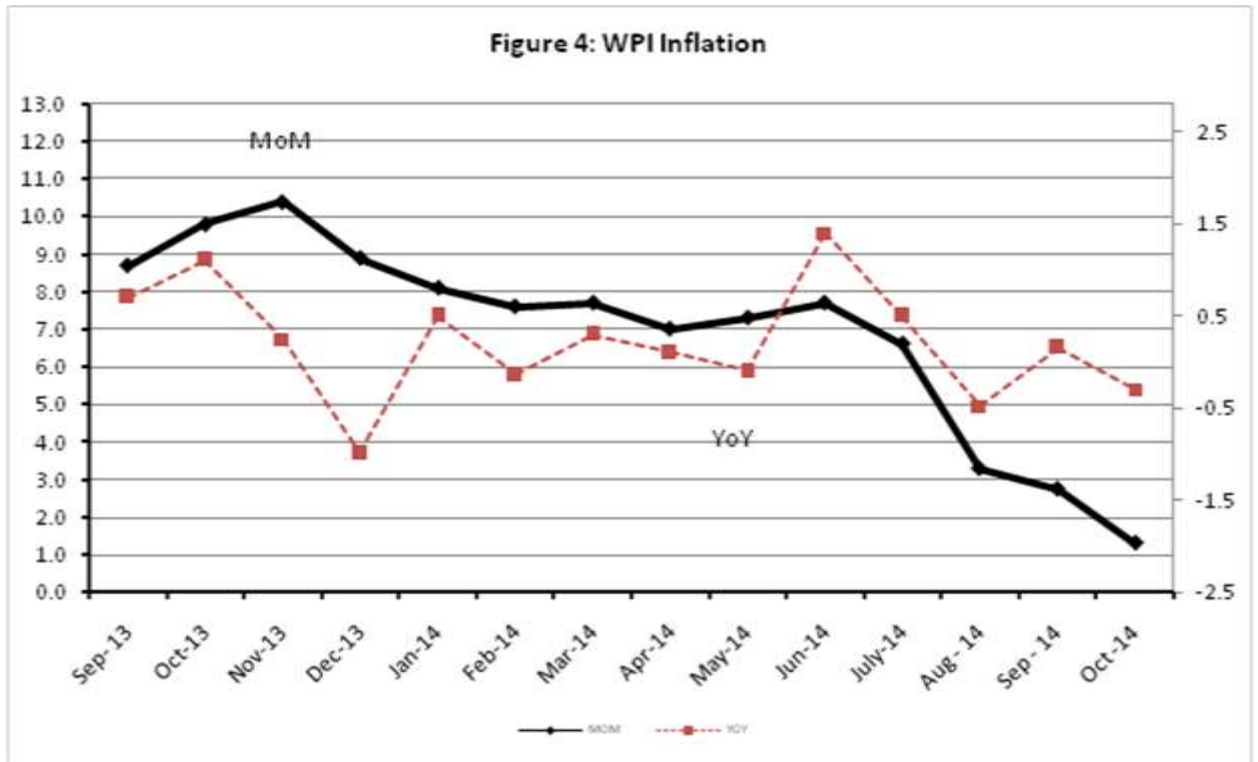
Increased: Wool (6.70%), Hides & Fur Skins (6.57%), Potatoes (6.07%), Woven Fabrics (4.84%), Other Glass Articles (4.06%), Processed Liquid Milk (3.63%), Blankets (2.89%), Ceramics & Sanitary Fixture (2.37%), Plastic Products (2.22%), Bed Sheets (2.21%), Fresh Fruits (2.13%) and Bajra (2.09%).

Decreased: Jowar (6.80%), Fibre Crops (6.68%), Furnace Oil (6.63%), Vegetables (6.38%), Poultry (4.09%), Sugar (3.07%), Cotton seeds (2.78%), Motor spirit (2.76%), Oil Cakes (2.12%), Other Oil Seeds (2.06%).

2. **Year-on-year** Top few commodities which varied from previous year i.e. October, 2013 are given below:-

Increased: Potatoes (73.48%), Stimulants and Spice Crops (51.82%), Leather without hair (51.50%), Dyeing Material (37.90%), Insecticides (37.04%), Lathe Machine (33.94%) and Tractors (26.33%) Ceramic & Sanitary Fixture (24.18%), Woolen Carpet (24.02%), Readymade Garments (21.98%) and Blanket (21.30%).

Decreased: Fiber Crops (24.49%), Coffee & Tea (18.81%), Other Leather N.E.C (18.74%) and Cotton Yarn (14.71%).



Annexure A: Consumer Price Index Numbers by Commodity Groups & Commodities (2007-08=100)

Item and Specification	Weight	Index Numbers			% Change in Oct 2014 over	
		Oct 14	Sep 14	Oct 13	Sep 2014	Oct 2013
General	100.0000	199.81	199.40	188.82	+ 0.21	+ 5.82
Food and non-alcoholic Bevera	34.8343	221.33	221.77	211.99	- 0.20	+ 4.41
01 Wheat	0.3477	210.63	209.37	212.47	+ 0.60	- 0.87
02 Wheat Flour	4.1648	222.81	222.34	221.49	+ 0.21	+ 0.60
03 Wheat Product	0.0959	220.03	218.67	203.19	+ 0.62	+ 8.29
04 Besan	0.1500	171.46	170.88	171.16	+ 0.34	+ 0.18
05 Rice	1.5821	196.10	195.91	192.27	+ 0.10	+ 1.99
06 Cereals	0.1563	238.48	238.08	227.50	+ 0.17	+ 4.83
07 Bakery & Confectionary	1.1550	206.17	206.01	193.77	+ 0.08	+ 6.40
08 Nimco	0.4574	237.62	235.78	213.57	+ 0.78	+ 11.26
09 Meat	2.4303	243.17	242.68	228.63	+ 0.20	+ 6.36
10 Chicken	1.3596	171.55	179.10	172.68	- 4.22	- 0.65
11 Fish	0.2970	213.95	215.15	208.46	- 0.56	+ 2.63
12 Milk Fresh	6.6800	247.00	245.51	230.76	+ 0.61	+ 7.04
13 Milk Products	0.6338	241.78	241.27	225.47	+ 0.21	+ 7.23
14 Milk Powder	0.1129	225.13	224.30	197.75	+ 0.37	+ 13.85
15 Eggs	0.4555	215.84	214.36	198.88	+ 0.69	+ 8.53
16 Mustard Oil	0.0952	158.89	159.12	157.41	- 0.14	+ 0.94
17 Cooking Oil	1.7538	161.97	161.97	161.21	+ 0.00	+ 0.47
18 Vegetable Ghee	2.0714	156.90	156.72	156.04	+ 0.11	+ 0.55
19 Dry Fruits	0.2543	241.48	237.15	221.30	+ 1.83	+ 9.12
20 Fresh Fruits	1.8649	224.17	216.18	195.24	+ 3.70	+ 14.82
21 Pulse Masoor	0.2712	182.76	181.03	159.87	+ 0.96	+ 14.32
22 Pulse Moong	0.2336	280.50	279.56	232.81	+ 0.34	+ 20.48
23 Pulse Mash (Washed)	0.2098	226.52	222.97	187.13	+ 1.59	+ 21.05
24 Pulse Gram	0.2361	169.05	167.35	163.71	+ 1.02	+ 3.26
25 Gram Whole	0.1616	178.73	179.24	174.43	- 0.28	+ 2.47
26 Beans	0.0269	244.36	242.22	234.82	+ 0.88	+ 4.06
27 Potatoes	0.4452	466.16	473.29	295.14	- 1.51	+ 57.95
28 Onion	0.5093	250.25	256.60	322.63	- 2.47	- 22.43
29 Tomatoes	0.4172	198.97	226.41	234.89	- 12.12	- 15.29
30 Fresh Vegetables	1.7543	242.35	250.69	253.79	- 3.33	- 4.51
31 Sugar	1.0445	212.99	218.34	200.64	- 2.45	+ 6.16
32 Gur	0.0220	268.19	267.14	276.11	+ 0.39	- 2.87
33 Honey	0.0446	299.70	299.51	260.63	+ 0.06	+ 14.99
34 SweetMeat	0.2483	230.79	229.84	218.95	+ 0.41	+ 5.41
35 Beverages	1.1990	207.93	209.36	188.18	- 0.68	+ 10.50
36 Jam, Tomato Ketchup & Pickles	0.2454	198.66	198.62	188.91	+ 0.02	+ 5.16
37 Condiments	0.2656	251.20	250.05	220.82	+ 0.46	+ 13.76
38 Spices	0.5441	232.46	230.32	214.81	+ 0.93	+ 8.22
39 Tea	0.8377	212.06	209.82	253.90	+ 1.07	- 16.48
Alcoholic Beverages, Tobacco	1.4135	266.62	266.59	218.25	+ 0.01	+ 22.16
40 Cigarettes	1.3906	267.63	267.63	218.68	+ 0.00	+ 22.38
41 Betel Leaves & Nuts	0.0229	205.62	203.45	192.62	+ 1.07	+ 6.75
Clothing and footwear	7.5708	211.10	210.97	194.51	+ 0.06	+ 8.53
42 Cotton Cloth	1.7286	206.89	206.89	181.33	+ 0.00	+ 14.10
43 Woolen Cloth	0.8759	229.10	228.99	211.03	+ 0.05	+ 8.56
44 Readymade Garments	0.9739	212.38	212.38	192.61	+ 0.00	+ 10.26
45 Woolen Readymade Garments	0.3964	219.58	218.60	196.12	+ 0.45	+ 11.96
46 Hosiery	0.5094	222.29	222.19	201.09	+ 0.05	+ 10.54
47 Dopatta	0.4412	226.62	226.62	210.56	+ 0.00	+ 7.63
48 Cleaning and Laundry	0.2110	234.46	233.42	213.08	+ 0.45	+ 10.03
49 Tailoring	0.8840	258.78	258.78	233.15	+ 0.00	+ 10.99
50 Footwear	1.5504	164.18	164.05	169.38	+ 0.08	- 3.07
Housing, water, Elec., Gas an	29.4149	173.39	171.70	164.17	+ 0.98	+ 5.62
51 House Rent	21.8149	162.06	159.82	150.59	+ 1.40	+ 7.62
52 Construction Input Items	0.5623	236.73	236.34	218.32	+ 0.17	+ 8.43
53 Construction Wage Rates	0.3331	204.03	202.74	188.80	+ 0.64	+ 8.07
54 Water Supply	0.4971	149.92	149.92	145.80	+ 0.00	+ 2.83
55 Electricity	4.3985	227.44	227.44	227.44	+ 0.00	+ 0.00

Annexure A: Consumer Price Index Numbers by Commodity Groups & Commodities (2007-08=100)

Item and Specification	Weight	Index Numbers			% Change in Oct 2014 over	
		Oct 14	Sep 14	Oct 13	Sep 2014	Oct 2013
56 Gas	1.5756	143.81	143.81	143.81	+ 0.00	+ 0.00
57 Kerosene Oil	0.0057	274.86	278.65	293.68	- 1.36	- 6.41
58 Firewood Whole	0.2277	266.60	265.66	250.91	+ 0.35	+ 6.25
<i>Furnishing and household equi</i>	4.2082	207.48	207.21	192.39	+ 0.13	+ 7.84
59 Furniture	0.3315	198.76	198.64	182.22	+ 0.06	+ 9.08
60 Household Textiles	0.6489	203.12	202.95	188.19	+ 0.08	+ 7.93
61 Household Equipment	0.5936	171.71	171.62	164.21	+ 0.05	+ 4.57
62 Utensils	0.3212	209.01	208.66	190.82	+ 0.17	+ 9.53
63 Plastic Products	0.2547	198.24	197.49	187.78	+ 0.38	+ 5.57
64 Washing Soaps & Detergents	0.7893	222.35	221.85	211.38	+ 0.23	+ 5.19
65 Sewing Needle & Dr Cell	0.1496	183.04	182.30	170.32	+ 0.41	+ 7.47
66 Household Servant	1.0432	225.87	225.81	203.63	+ 0.03	+ 10.92
67 Marriage Hall Charges	0.0762	227.81	226.93	206.52	+ 0.39	+ 10.31
<i>Health</i>	2.1868	174.95	174.47	165.15	+ 0.28	+ 5.93
68 Drugs & Medicines	1.2667	146.84	146.53	142.10	+ 0.21	+ 3.34
69 Medical Equipments	0.0080	221.31	221.31	208.73	+ 0.00	+ 6.03
70 Doctor (MBBS) Clinic Fee	0.5904	236.75	235.89	214.87	+ 0.36	+ 10.18
71 Medical Tests	0.3217	171.03	170.57	163.57	+ 0.27	+ 4.56
<i>Transport</i>	7.2023	204.84	205.10	197.06	- 0.13	+ 3.95
72 Motor Vehicles	0.6630	163.73	163.72	160.39	+ 0.01	+ 2.08
73 Motor Vehicle Accessories	0.2439	229.28	229.28	220.01	+ 0.00	+ 4.21
74 Motor Fuel	3.0269	187.14	189.43	195.25	- 1.21	- 4.15
75 Mechanical Service	0.4552	207.30	207.03	196.39	+ 0.13	+ 5.56
76 Motor Vehicle Tax	0.1099	210.18	210.18	153.74	+ 0.00	+ 36.71
77 Transport Services	2.7034	231.90	230.09	207.87	+ 0.79	+ 11.56
<i>Communication</i>	3.2198	129.85	129.85	129.68	+ 0.00	+ 0.13
78 Postal Services	0.0662	216.26	216.26	215.89	+ 0.00	+ 0.17
79 Communication & Apparatus	3.1536	128.04	128.03	127.87	+ 0.01	+ 0.13
<i>Recreation and culture</i>	2.0227	189.39	189.34	182.19	+ 0.03	+ 3.95
80 Recreation & Culture	0.8634	127.84	127.81	125.46	+ 0.02	+ 1.90
81 Text Books	0.5706	280.89	280.89	267.10	+ 0.00	+ 5.16
82 Newspapers	0.1934	175.42	175.42	170.49	+ 0.00	+ 2.89
83 Stationery	0.3953	198.56	198.41	189.24	+ 0.08	+ 4.92
<i>Education</i>	3.9431	192.41	191.93	167.91	+ 0.25	+ 14.59
84 Education	3.9431	192.41	191.93	167.91	+ 0.25	+ 14.59
<i>Restaurants and hotels</i>	1.2286	242.78	242.00	223.77	+ 0.32	+ 8.50
85 Readymade Food	1.2286	242.78	242.00	223.77	+ 0.32	+ 8.50
<i>Misc. goods and services</i>	2.7550	220.36	219.39	208.36	+ 0.44	+ 5.76
86 Personal Care	1.4935	204.03	203.47	190.82	+ 0.28	+ 6.92
87 Cosmetics	0.3853	183.89	183.51	174.26	+ 0.21	+ 5.53
88 Blades	0.0322	184.82	184.82	180.16	+ 0.00	+ 2.59
89 Personal Equipments	0.8440	267.26	265.25	256.05	+ 0.76	+ 4.38

Annexure B: Wholesale Price Indices by Major Groups & Commodities

(2007-08=100)

	Index Numbers				% Change in Oct 2014 over		
General	100.0000	214.39	215.06	211.70	-	0.31	+ 1.27
Agriculture Forestry & Fisher	25.7674	222.72	225.48	220.96	-	1.22	+ 0.80
001 Wheat	0.6297	215.03	214.19	222.41	+	0.39	- 3.32
002 Maize	0.6764	193.55	195.66	182.03	-	1.08	+ 6.33
003 Rice	2.4413	182.99	181.27	174.66	+	0.95	+ 4.77
004 Sorghum / Jowar	0.0214	286.45	307.35	263.80	-	6.80	+ 8.59
005 Millet / Bajra	0.0374	177.35	173.72	185.50	+	2.09	- 4.39
006 Vegetables	1.2441	302.11	322.71	333.60	-	6.38	- 9.44
007 Fresh Fruits	1.5144	250.21	244.99	221.48	+	2.13	+ 12.97
008 Dry Fruits	0.2478	220.55	218.98	192.11	+	0.72	+ 14.80
009 Cotton Seeds	1.1511	186.82	192.17	168.29	-	2.78	+ 11.01
010 Other Oil Seeds	0.0722	186.54	190.46	175.89	-	2.06	+ 6.05
011 Edible Roots / Potatoes	0.2540	535.17	504.54	308.49	+	6.07	+ <u>73.48</u>
012 Stimulant & Spice Crops	0.1634	397.61	404.43	261.90	-	1.69	+ <u>51.82</u>
013 Pulses	0.4901	193.91	193.89	175.64	+	0.01	+ 10.40
014 Sugar Crops	1.0725	267.92	267.92	267.92	+	0.00	+ 0.00
015 Fibre Crops	5.3169	170.48	182.68	225.78	-	6.68	- 24.49
016 Unmanufactured Tobacco	0.0742	208.01	207.00	181.07	+	0.49	+ 14.88
017 Poultry	0.5633	172.75	180.11	173.31	-	4.09	- 0.32
018 Raw Milk from Bovine Animals	7.0279	248.92	248.75	223.35	+	0.07	+ 11.45
019 Eggs	0.5034	218.07	217.31	203.29	+	0.35	+ 7.27
020 Raw Animal Materials / Wool	0.0351	173.82	162.90	153.55	+	6.70	+ 13.20
021 Hides & Fur Skins, Raw	0.4834	154.93	145.38	144.43	+	6.57	+ 7.27
022 Fuel Wood in Logs	0.0179	246.31	243.47	232.88	+	1.17	+ 5.77
023 Fish Live Fresh or Chilled	1.7295	247.49	244.41	248.24	+	1.26	- 0.30
Ores/Minerals, Elec., Gas & W	12.0389	244.75	242.99	243.64	+	0.72	+ 0.46
024 Coal not Agglomerated	0.7508	223.53	223.53	223.53	+	0.00	+ 0.00
025 Natural Gas Liquified	5.7385	206.65	202.94	204.63	+	1.83	+ 0.99
026 Salt & Pure Sodium Chloride	0.0584	247.16	248.50	217.04	-	0.54	+ 13.88
027 Electrical Energy	5.4912	287.44	287.44	287.44	+	0.00	+ 0.00
Food, Beverages, Tobacco, Textil	31.1122	208.83	207.86	200.96	+	0.47	+ 3.92
Food Products, Beverages &	20.0718	217.20	215.76	202.24	+	0.67	+ 7.40
028 Meat of Animals	3.4559	257.41	256.74	239.95	+	0.26	+ 7.28
029 Vegetables & Fruit Juice	0.0058	196.79	194.12	192.05	+	1.38	+ 2.47
030 Dried Fruits & Nuts	0.1733	222.26	219.98	223.95	+	1.04	- 0.75
031 Fruit Juices	0.3880	171.93	171.34	165.10	+	0.34	+ 4.14
032 Vegetable Oils Refined	1.9242	163.22	162.58	160.07	+	0.39	+ 1.97
033 Vegetable Ghee	1.5632	137.60	139.10	140.53	-	1.08	- 2.08
034 Oil Cakes	0.9611	203.69	208.10	181.08	-	2.12	+ 12.49
035 Processed Liquid Milk	4.4437	242.78	234.27	205.54	+	3.63	+ 18.12
036 Milk & Cream in Solid Form	0.0316	221.48	219.41	188.09	+	0.94	+ 17.75
037 Ice Cream	0.0047	219.91	219.91	209.79	+	0.00	+ 4.82
038 Dairy Products N.E.C	0.0117	237.45	235.94	217.26	+	0.64	+ 9.29
039 Wheat Flour	2.3034	202.07	200.80	205.40	+	0.63	- 1.62
040 Other Cereal Flour	0.0604	138.03	137.97	134.55	+	0.04	+ 2.59
041 Sugar Refined	1.7975	224.22	231.31	218.48	-	3.07	+ 2.63
042 Chocolate	0.0139	99.19	99.19	99.19	+	0.00	+ 0.00
043 Sugar Confectionary	0.0738	102.28	102.28	102.28	+	0.00	+ 0.00
044 Coffee & Tea	0.7303	186.74	183.60	230.00	+	1.71	- 18.81
045 Spices	0.1449	188.66	191.60	191.28	-	1.53	- 1.37
046 Other Food Products	0.0336	296.60	296.10	308.23	+	0.17	- 3.77
047 Mineral Water	0.0207	185.63	185.63	181.84	+	0.00	+ 2.08
048 Beverages	0.6303	171.52	169.40	148.83	+	1.25	+ 15.25
049 Tobacco Products	1.2998	290.52	290.52	242.41	+	0.00	+ 19.85
Textiles & Apparels	10.3289	193.45	193.42	199.57	+	0.02	- 3.07
050 Cotton Yarn	5.2491	190.52	192.90	223.38	-	1.23	- 14.71
051 Nylon Yarn	0.1719	164.37	164.84	183.61	-	0.29	- 10.48
052 Blended Yarn	0.1689	193.92	193.92	202.06	+	0.00	- 4.03
053 Woven Fabrics	0.0128	237.79	226.82	218.12	+	4.84	+ 9.02
054 Cotton Fabrics	0.6343	200.51	196.81	187.77	+	1.88	+ 6.78
055 Other Fabrics	1.1016	206.11	203.01	178.98	+	1.53	+ 15.16
056 Silk & Reyon Fabrics	0.7350	176.47	175.35	160.48	+	0.64	+ 9.96
057 Towels	0.1235	250.33	246.16	231.87	+	1.69	+ 7.96
058 Blankets	0.0029	230.00	223.55	189.62	+	2.89	+ 21.30
059 Bed Sheets	0.0913	247.46	242.12	223.74	+	2.21	+ 10.60
060 Quilts	0.0019	179.47	177.63	160.74	+	1.04	+ 11.65
061 Woolen Carpets	0.0383	132.14	132.14	106.55	+	0.00	+ 24.02
062 Synthetic Carpets	0.0566	126.27	126.27	114.41	+	0.00	+ 10.37

Annexure B: Wholesale Price Indices by Major Groups & Commodities

(2007-08=100)

		Index Numbers				% Change in Oct 2014 over		
063	Hosiery Products	0.8832	210.35	208.91	185.37	+	0.69	+ 13.48
064	Readymade Garments	1.0576	186.77	183.14	153.12	+	1.98	+ 21.98
	Leather Products	0.7115	195.99	194.58	184.76	+	0.72	+ 6.08
065	Leather Without Hair	0.2973	212.86	212.86	140.50	+	0.00	+ 51.50
066	Other Leather N.E.C	0.2567	214.36	210.44	263.79	+	1.86	- 18.74
067	Footwears	0.1575	134.22	134.22	139.49	+	0.00	- 3.78
	Other Transportable Goods	22.3659	212.36	214.53	216.28	-	1.01	- 1.81
068	Timber	0.0165	189.35	188.95	163.35	+	0.21	+ 15.92
069	Printing Paper	0.4279	169.34	169.34	167.02	+	0.00	+ 1.39
070	Hard Board	0.1579	229.17	229.17	214.58	+	0.00	+ 6.80
071	Coke	0.2797	163.45	163.45	163.45	+	0.00	+ 0.00
072	Motor Spirit	1.5336	175.05	180.02	191.35	-	2.76	- 8.52
073	Diesel Oil	5.2664	254.48	256.53	279.68	-	0.80	- 9.01
074	Kerosine Oil	0.2151	277.92	281.74	288.36	-	1.36	- 3.62
075	Furnace Oil	3.2664	159.86	171.21	182.48	-	6.63	- 12.40
076	Mobil Oil	0.7114	201.53	201.17	193.09	+	0.18	+ 4.37
077	Chemicals	1.7720	196.00	195.25	165.70	+	0.38	+ 18.29
078	Dyeing Material	0.1539	143.77	143.77	104.26	+	0.00	+ 37.90
079	Fertilizers	2.8657	270.24	271.20	264.71	-	0.35	+ 2.09
080	Pesticides	0.2763	266.71	266.71	222.93	+	0.00	+ 19.64
081	Insecticides	0.1276	179.64	178.63	131.09	+	0.57	+ 37.04
082	Paints & Varnishes	0.1916	280.05	279.37	249.49	+	0.24	+ 12.25
083	Medicines	1.1428	144.59	145.03	138.77	-	0.30	+ 4.19
084	Soaps & Detergents	0.8168	177.77	176.33	178.79	+	0.82	- 0.57
085	Auto Tyres	0.2703	188.28	188.28	185.57	+	0.00	+ 1.46
086	Plastic Products	0.4550	210.90	206.32	199.24	+	2.22	+ 5.85
087	Glass sheets	0.2089	209.86	209.86	205.47	+	0.00	+ 2.14
088	Other Glass Articles	0.1635	227.13	218.27	206.09	+	4.06	+ 10.21
089	Ceramics & Sanitary Fixture	0.0244	212.17	207.26	170.85	+	2.37	+ 24.18
090	Bricks, Blocks & Tiles	0.1566	204.18	203.25	192.69	+	0.46	+ 5.96
091	Cement	1.8145	210.17	207.79	200.39	+	1.15	+ 4.88
092	Bed Foam	0.0006	150.83	150.83	147.67	+	0.00	+ 2.14
093	Matches	0.0505	143.20	143.20	143.20	+	0.00	+ 0.00
	Metal Product, Machinery & Eq	8.7156	172.85	172.76	166.77	+	0.05	+ 3.65
094	Pig Iron	0.0593	128.97	128.97	128.97	+	0.00	+ 0.00
095	Steel Bar & Sheets	1.4022	150.97	151.35	141.14	-	0.25	+ 6.96
096	Pipe Fittings	0.0780	191.94	191.63	160.63	+	0.16	+ 19.49
097	Steel Products	0.3879	173.74	172.77	168.46	+	0.56	+ 3.13
098	Engines & Motors	0.0046	109.07	109.07	109.07	+	0.00	+ 0.00
099	Vacuum Pumps	0.0155	115.39	115.39	115.39	+	0.00	+ 0.00
100	Air Conditioners	0.0049	195.53	195.53	181.12	+	0.00	+ 7.96
101	Cultivators	0.0551	226.90	226.90	200.36	+	0.00	+ 13.25
102	Chuff Cutter	0.1293	149.20	149.20	144.94	+	0.00	+ 2.94
103	Tractors	0.0028	214.54	214.54	169.82	+	0.00	+ 26.33
104	Lathe Machines	0.0525	208.81	208.81	155.90	+	0.00	+ 33.94
105	Concrete Mixture	0.0107	138.83	138.83	138.83	+	0.00	+ 0.00
106	Fridge, WashM, SewM, Fans, Iron	1.1645	196.81	196.04	181.62	+	0.39	+ 8.36
107	Electric Wires	0.0912	184.79	184.79	168.13	+	0.00	+ 9.91
108	Lighting Equipments	1.4431	164.95	164.95	162.52	+	0.00	+ 1.50
109	Radio & Television	0.1843	126.49	126.49	126.49	+	0.00	+ 0.00
110	Motor Vehicles	0.0244	183.03	182.59	174.21	+	0.24	+ 5.06
111	Motorcycles	0.2570	126.92	126.92	124.80	+	0.00	+ 1.70
112	Bicycles	3.3483	182.84	182.84	180.99	+	0.00	+ 1.02