



Monthly Review on Price Indices



November, 2014
(Base 2007-08)

Government of Pakistan
Statistics Division
Pakistan Bureau of Statistics
Islamabad

I. Inflation in Brief

1. CPI inflation, General, increased by 4.0% on year-on-year basis in November 2014 as compared to 5.8% in the previous month and by 10.9% in November 2013. On month-on-month basis, it decreased by 0.5% in November 2014 as compared to increase of 0.2% in the previous month and 1.3% in November 2013.
2. Core inflation measured by non-food non-energy CPI (Core NFNE) increased by 6.9% on (YoY) basis in November 2014 as compared to 7.8% in the previous month and by 8.5% in November 2013. On (MoM) basis, it decreased by 0.5% in November 2014 as compared to increase of 0.7% in the previous month and by 0.3% in November 2013.
3. Core inflation, measured by 20% weighted trimmed mean CPI (Core Trimmed) increased by 5.3% on (YoY) basis in November 2014 as compared to 6.0% in the previous month and by 9.2% in November 2013. On (MoM) basis, it increased by 0.1% in November 2014 as compared to 0.4% in the previous month and 0.4% in November 2013.
4. SPI inflation on YoY basis decreased by 0.3% in November 2014 as compared to increase of 4.1% a month earlier and 14.1% in November 2013. On MoM basis, it is decreased by 1.1% in November 2014 as compared to decrease of 0.03% a month earlier and increased by 3.2% in November 2013.
5. WPI inflation on YoY basis increased by 0.02% in November 2014 as compared to 1.3% a month earlier and 10.4% in November 2013. WPI inflation on MoM basis decreased by 1.0% in November 2014 as compared to decrease of 0.3% a month earlier and increase of 0.2% in November 2013.
6. Figures 1 and 2 show graphically the data of Table 1. Table 1.1 shows "Period Average" and "YoY" percent changes in indices of three years.

Table 1: Inflation (%) (Base 2007-08)

Period	CPI						Core Inflation				SPI**		WPI	
	General		Food		Non-food		NFNE*		Trimmed		YoY	MoM	YoY	MoM
	YoY	MoM	YoY	MoM	YoY	MoM	YoY	MoM	YoY	MoM				
Oct 13	9.1	2.0	9.8	1.7	8.6	2.2	8.4	0.9	9.0	0.8	10.5	1.2	9.8	1.1
Nov 13	10.9	1.3	13.0	2.6	9.4	0.3	8.5	0.3	9.2	0.4	14.1	3.2	10.4	0.2
Dec 13	9.2	-1.3	9.3	-3.3	9.1	0.2	8.2	0.2	8.7	0.4	11.1	-2.5	8.9	-1.0
Jan 14	7.9	0.5	7.2	0.0 ¹	8.4	0.9	8.0	1.0	8.2	0.6	7.7	-1.2	8.1	0.5
Feb 14	7.9	-0.3	7.6	-1.0	8.2	0.2	7.8	0.2	8.1	0.2	7.5	-0.1	7.6	-0.1
Mar 14	8.5	1.0	9.3	2.1	8.0	0.2	7.6	0.3	8.1	0.3	9.0	2.1	7.7	0.3
Apr 14	9.2	1.7	9.9	2.0	8.7	1.5	8.5	1.9	9.0	0.9	9.4	0.1	7.0	0.1
May 14	8.3	-0.3	7.4	-1.2	9.0	0.4	8.7	0.5	8.3	0.3	7.7	-1.5	7.3	-0.1
Jun14	8.2	0.6	7.4	1.0	8.9	0.3	8.7	0.4	7.9	0.3	6.2	1.1	7.7	1.4
Jul 14	7.9	1.7	7.0	2.7	8.5	1.0	8.3	1.1	7.6	0.8	5.9	2.0	6.6	0.5
Aug14	7.0	0.3	5.6	0.6	8.1	0.2	7.9	0.2	7.1	0.2	5.2	0.8	3.3	-0.5
Sep14	7.7	0.4	7.2	0.0	8.0	0.6	8.1	0.7	7.1	0.2	5.4	0.2	2.7	0.2
Oct 14	5.8	0.2	5.2	-0.2	6.3	0.5	7.8	0.7	6.0	0.4	4.1	0.0 ²	1.3	-0.3
Nov 14	4.0	-0.5	2.1	-0.4	5.4	-0.6	6.9	-0.5	5.3	0.1	-0.3	-1.1	0.0 ³	-1.0

*NFNE is non-food non-energy,

** SPI for quintile 1

¹ Actual figure is -0.04, displayed in rounded figure

²Actual figure is -0.03, ³Actual figure is 0.02 displayed in rounded figure

Table 1.1 : Period Average and YoY % Changes of Indices (Base 2007-08)

Index	Averages July-November % Changes			November over November % Changes		
	2014-15	2013-14	2012-13	2014-15	2013-14	2012-13
CPI	6.45	8.84	8.39	3.96	10.90	6.93
SPI	4.02	10.66	7.31	-0.27	14.07	6.00
WPI	2.74	8.74	7.61	0.02	10.44	7.73

Figure 1: CPI Inflation YoY, Special Indices

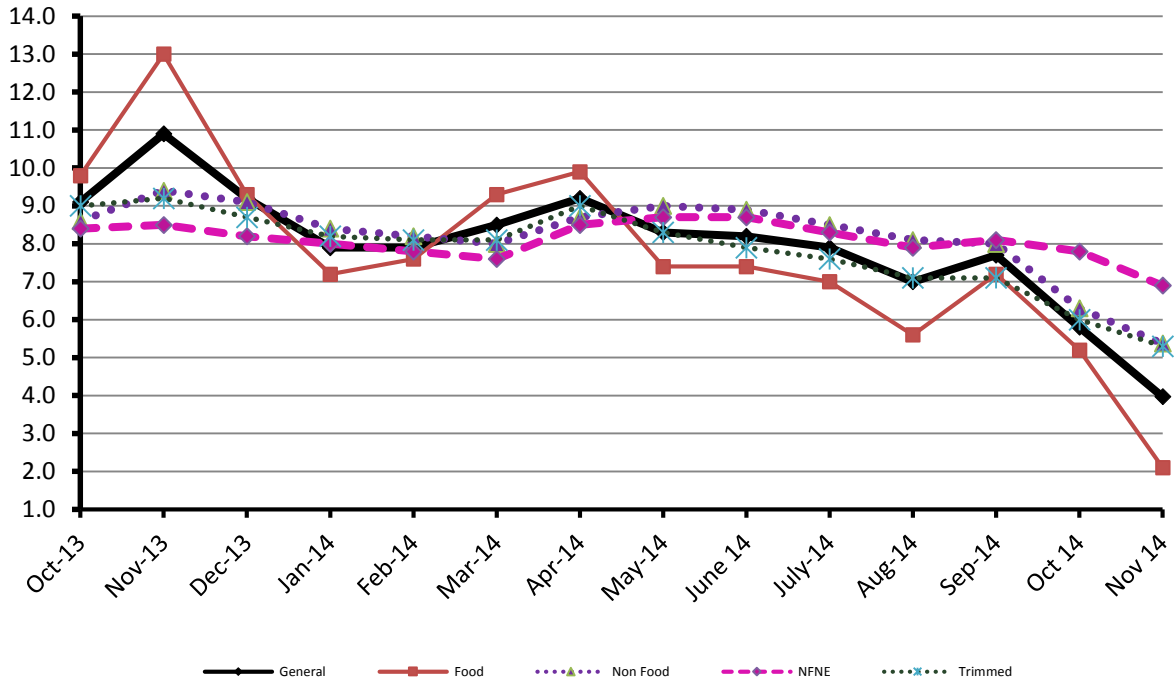
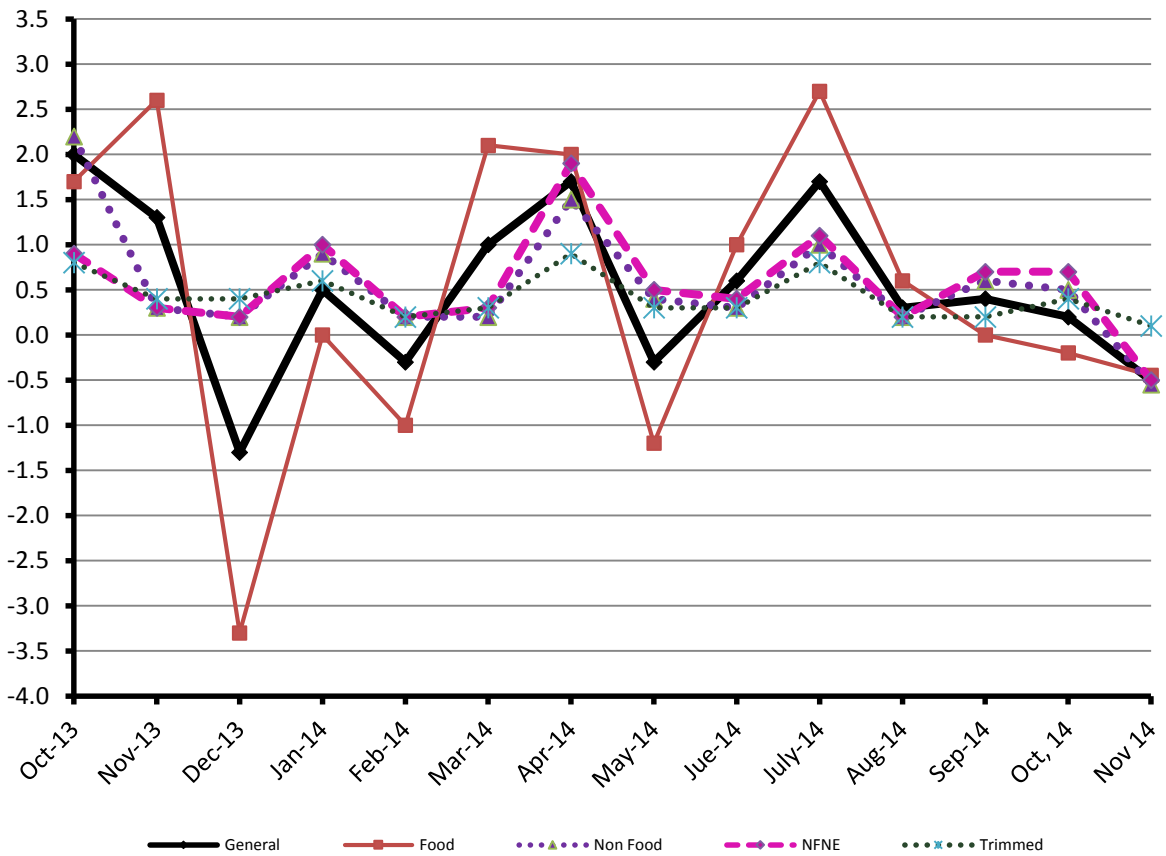


Figure 2: CPI Inflation MoM, Special Indices



II. Consumer Price Index (CPI)

The Consumer Price Index of November, 2014 has decreased by 0.51% over October, 2014 and increased by 3.96% over corresponding month of the last year, i.e. November 2013.

Table 2 : Consumer Price Index by Group of Commodities and Services (Base 2007-08)

No	Group	Group Weight (%)	Indices			% Change Oct 2014 Over		Impact (In % points) Nov 2014 Over	
			Nov 2014	Oct 2014	Nov 2013	Oct 2014	Nov 2013	Oct 2014	Nov 2013
	General	100.00	198.80	199.81	191.21	-0.51	3.96	-0.51	3.96
1.	Food & Non-alcoholic Bev.	34.83	220.25	221.33	217.89	-0.49	1.08	-0.19	0.43
	<i>Non-perishable Food Items</i>	29.84	216.69	216.08	209.14	0.28	3.61	0.09	1.18
	<i>Perishable Food Items</i>	4.99	241.56	252.71	270.20	-4.41	-10.60	-0.28	-0.75
2.	Alcoholic Bev.& Tobacco	1.41	266.65	266.62	218.24	0.01	22.18	0.00	0.36
3.	Clothing & Footwear	7.57	213.01	211.10	196.25	0.90	8.54	0.07	0.66
4.	Housing, Water, Electricity, Gas & Fuels	29.41	174.01	173.39	164.33	0.36	5.89	0.09	1.49
5.	Furnishing & Household Equipment Maintenance	4.21	208.26	207.47	194.17	0.38	7.26	0.02	0.31
6.	Health	2.19	175.37	174.95	165.74	0.24	5.81	0.00	0.11
7.	Transport	7.20	190.76	204.84	197.04	-6.87	-3.19	-0.51	-0.24
8.	Communication	3.22	129.99	129.85	129.71	0.11	0.22	0.00	0.00
9.	Recreation & Culture	2.02	189.54	189.39	182.67	0.08	3.76	0.00	0.07
10.	Education	3.94	192.41	192.41	167.91	0.00	14.59	0.00	0.51
11.	Restaurants & Hotels	1.23	242.77	242.77	225.77	0.00	7.53	0.00	0.11
12.	Miscellaneous	2.76	220.34	220.34	209.60	0.00	5.12	0.00	0.15

Main contributors to month-on-month and year-on-year percentage changes are given below and detail is given in Annexure A.

1. **Month-on-month** Top few commodities which varied from previous month i.e. October 2014 are given below:-

Food Items Increased: Eggs (8.71%), Pulse Moong (5.42%), Vegetables (4.41%), and Dry Fruits (2.10%).

Decreased: Tomatoes (29.06%), Onions (18.75%), Potatoes (7.57%), Sugar (3.30%) and Fresh Fruits (2.52%).

Non-food Items Increased: Woolen Readymade Garments (6.89%) and Postal Services (2.36%).

Decreased: Transport Services (11.01%), Motor Fuel (6.12%) and Kerosene Oil (5.29%).

2. **Year-on-year:** Top few commodities which varied from previous year i.e. November 2013 are given below:-

Food Items Increased: Pulse Moong (24.15%), Cigarettes (22.38%), Pulse Mash (21.58%), Fresh Fruits (20.08%) and Pulse Masoor (15.09%).

Decreased: Tomatoes (65.82%), Onions (43.89%) and Tea (15.14%).

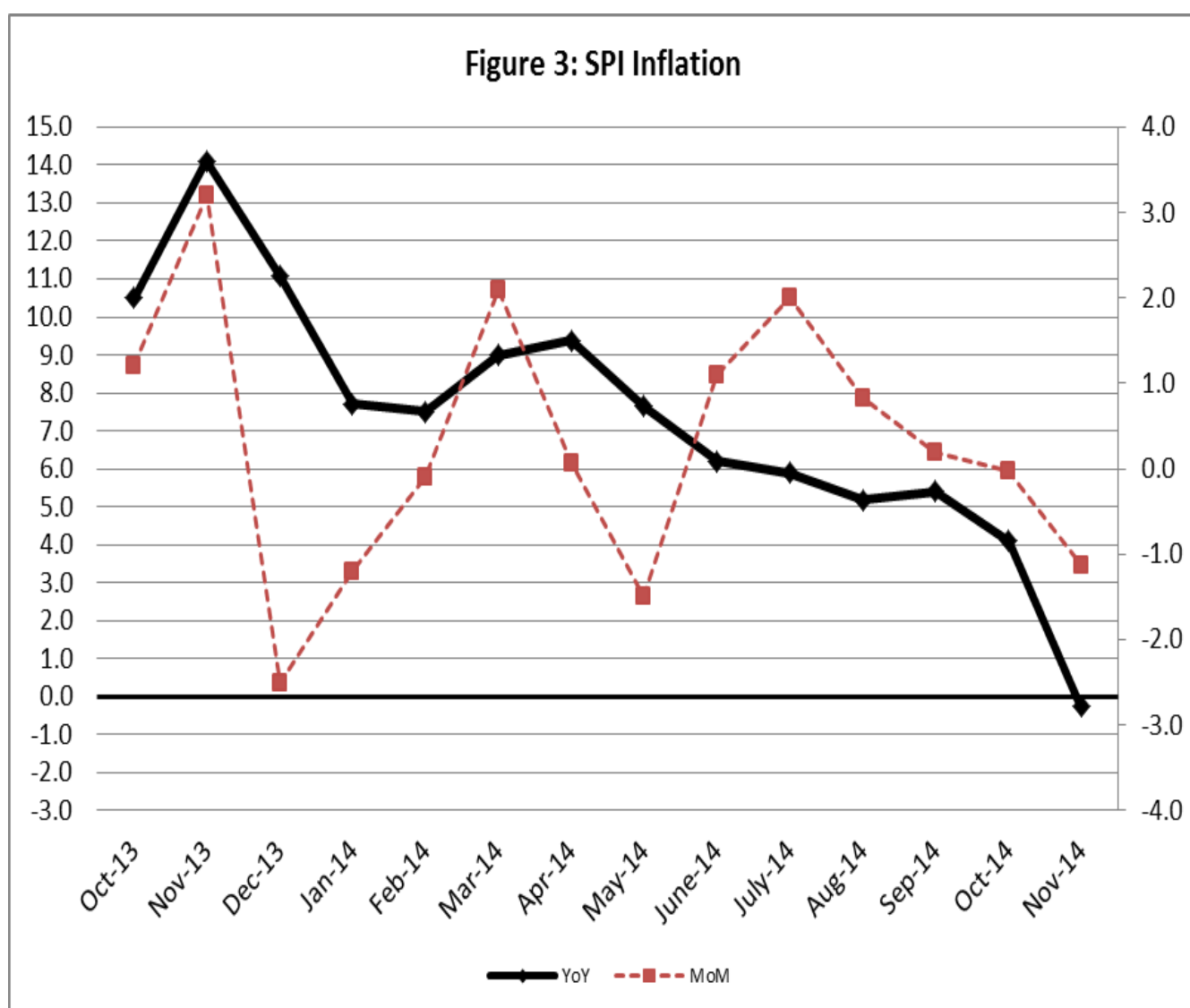
Non-food Items Increased: Motor Vehicle Tax (36.71%) and Woolen Readymade Garments (17.23%).

Decreased: Kerosene Oil (12.25%) and Motor Fuel (9.83%).

III. Sensitive Price Indicator

Quintile-wise percentage changes YoY and MoM are given below in Table 3. The series from October 2013 to November 2014 is also graphed below in Figure 3.

Table 3 : Sensitive Price Indicator (Base 2007-08)					
Quintiles	Indices			% Change November 2014 over	
	November 2014	October 2014	November 2013	October 2014	November 2013
1	206.84	209.21	207.40	-1.13	-0.27
2	212.73	215.07	212.58	-1.09	0.07
3	215.65	217.61	215.92	-0.90	-0.13
4	217.17	219.21	217.42	-0.93	-0.11
5	214.69	217.14	215.13	-1.13	-0.20
Combined	214.45	216.67	214.76	-1.02	-0.14



IV. Wholesale Price Index

The Wholesale Price Index for November 2014 decreased by 0.99% over October 2014. It is increased by 0.02% over the corresponding month of the last year. YoY and MoM movements, from October 2013 to November 2014 are also graphed below in Figure 4.

Table 4 : Wholesale Price Index by Group of Commodities (Base 2007-08)									
No.	Group	Group Weight (%)	Indices			% Change Nov 2014 over		Impact (in %age points) Nov 2014 over	
			Nov 2014	Oct 2014	Nov 2013	Oct 2014	Nov 2013	Oct 2014	Nov 2013
	General	100.00	212.26	214.39	212.22	-0.99	0.02	-0.99	0.02
1.	Agriculture, Forestry & Fishery Products	25.77	219.26	222.72	220.76	-1.55	-0.68	-0.41	-0.18
2.	Ores & Minerals, Electricity, Gas & Water	12.04	247.62	244.75	243.77	1.17	1.58	0.16	0.22
3.	Food Products, Beverages & Tobacco, Textiles, Apparel & Leather Products	31.11	207.90	208.83	201.99	-0.45	2.93	-0.13	0.87
	i. Food Products, Bev. & Tobacco	20.07	216.60	217.20	203.92	-0.28	6.22	-0.06	1.20
	ii. Textiles and Apparel	10.33	191.71	193.45	199.01	-0.90	-3.67	-0.08	-0.35
	iii. Leather Products	0.71	197.27	195.99	190.96	0.65	3.30	0.00	0.02
4.	Other Transportable Goods except Metal Products, Machinery & Equipment	22.37	206.62	212.36	216.87	-2.70	-4.73	-0.60	-1.08
5.	Metal Products, Machinery & Equipment	8.72	172.72	172.85	168.01	-0.08	2.80	-0.01	0.19

Main contributors to month-on-month and year-on-year percentage changes are given below and detail is given in Annexure B.

1. **Month-on-month** Top few commodities which varied from previous month i.e. October, 2014 are given below:-

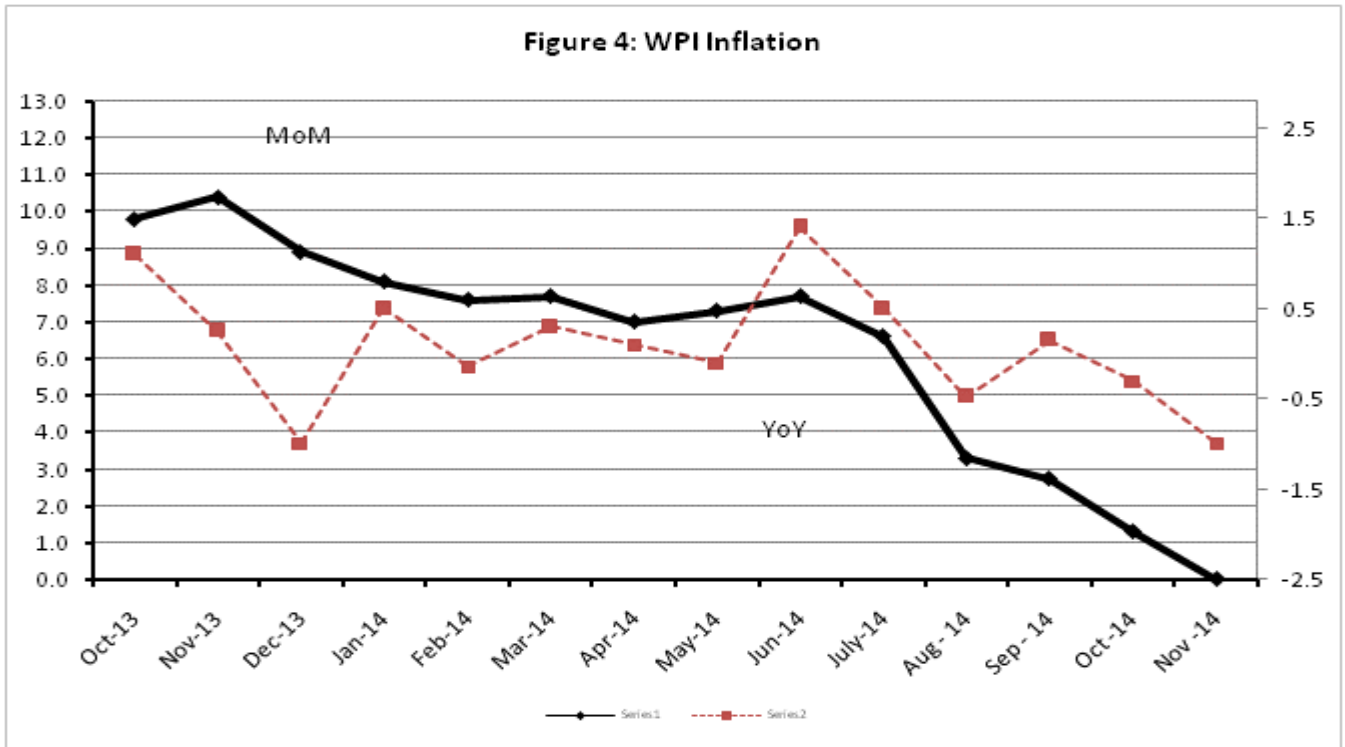
Increased: Eggs (10.60%), Quilts (5.17%), Fish (4.99%), Pulses (4.28%), Towels (4.20%), Bed Foam (2.88%), Dry Fruits & Nuts (2.34%) and unmanufactured Tobacco (2.22%).

Decreased: Fresh Fruits (15.76%), Potatoes (9.50%), Motor Spirit (9.11%), Stimulant & Spices Crops (8.86%), Kerosene Oil (8.54%), Diesel (7.39%), Vegetables (5.39%), Fiber Crops (4.07%), Bajra (3.29%) and Oil Cakes (2.66%).

2. **Year-on-year** Top few commodities which varied from previous year i.e. November, 2013 are given below:-

Increased: Leather without hair (48.75%), Insecticides (35.39%), Dyeing Material (35.05%), Stimulants and Spice Crops (31.46%), Ceramics & Sanitary Fixture (24.06%), Readymade Garments (21.98%) and Woolen Carpet (20.65%).

Decreased: Fiber Crops (23.08%), vegetables (22.26%), Other Leather N.E.C (22.04%), Coffee & Tea (18.05%), Motor Spirit (16.48%), Cotton Yarn (15.73%), Diesel (15.67%), Furnace Oil (14.56%), Kerosene Oil (11.75%) and Nylon Yarn (11.28%).



Annexure A: Consumer Price Index Numbers by Commodity Groups & Commodities (2007-08=100)

Item and Specification	Weight	Index Numbers			% Change in Nov 2014 over			
		Nov 14	Oct 14 13	Nov	Oct 2014	Nov 2013		
General	100.0000	198.80	199.81	191.21	-	0.51	+	3.96
Food and non-alcoholic Bevera	34.8343	220.25	221.33	217.89	-	0.49	+	1.08
01 Wheat	0.3477	211.83	210.63	220.58	+	0.57	-	3.97
02 Wheat Flour	4.1648	222.97	222.81	227.82	+	0.07	-	2.13
03 Wheat Product	0.0959	219.98	220.03	210.03	-	0.02	+	4.74
04 Besan	0.1500	172.67	171.46	169.37	+	0.71	+	1.95
05 Rice	1.5821	196.10	196.10	192.63	+	0.00	+	1.80
06 Cereals	0.1563	239.07	238.48	228.10	+	0.25	+	4.81
07 Bakery & Confectionary	1.1550	206.65	206.17	195.75	+	0.23	+	5.57
08 Nimco	0.4574	238.29	237.62	217.02	+	0.28	+	9.80
09 Meat	2.4303	243.83	243.17	228.77	+	0.27	+	6.58
10 Chicken	1.3596	173.51	171.55	162.43	+	1.14	+	6.82
11 Fish	0.2970	217.91	213.95	210.55	+	1.85	+	3.50
12 Milk Fresh	6.6800	247.74	247.00	231.57	+	0.30	+	6.98
13 Milk Products	0.6338	242.95	241.78	226.42	+	0.48	+	7.30
14 Milk Powder	0.1129	225.38	225.13	198.67	+	0.11	+	13.44
15 Eggs	0.4555	234.65	215.84	220.88	+	8.71	+	6.23
16 Mustard Oil	0.0952	158.89	158.89	158.69	+	0.00	+	0.13
17 Cooking Oil	1.7538	159.95	161.97	161.02	-	1.25	-	0.66
18 Vegetable Ghee	2.0714	155.25	156.90	157.09	-	1.05	-	1.17
19 Dry Fruits	0.2543	246.55	241.48	225.01	+	2.10	+	9.57
20 Fresh Fruits	1.8649	218.51	224.17	181.97	-	2.52	+	20.08
21 Pulse Masoor	0.2712	186.28	182.76	161.86	+	1.93	+	15.09
22 Pulse Moong	0.2336	295.69	280.50	238.17	+	5.42	+	24.15
23 Pulse Mash (Washed)	0.2098	229.35	226.52	188.64	+	1.25	+	21.58
24 Pulse Gram	0.2361	172.33	169.05	162.33	+	1.94	+	6.16
25 Gram Whole	0.1616	179.16	178.73	175.32	+	0.24	+	2.19
26 Beans	0.0269	245.30	244.36	235.84	+	0.38	+	4.01
27 Potatoes	0.4416	430.89	466.16	426.51	-	7.57	+	1.03
28 Onion	0.5057	203.33	250.25	362.39	-	18.75	-	43.89
29 Tomatoes	0.4136	141.15	198.97	412.96	-	29.06	-	<u>65.82</u>
30 Fresh Vegetables	1.7651	253.04	242.35	264.46	+	4.41	-	4.32
31 Sugar	1.0445	205.96	212.99	215.52	-	3.30	-	4.44
32 Gur	0.0220	263.18	268.19	278.99	-	1.87	-	5.67
33 Honey	0.0446	300.07	299.70	262.05	+	0.12	+	14.51
34 SweetMeat	0.2483	231.95	230.79	221.10	+	0.50	+	4.91
35 Beverages	1.1990	206.90	207.93	189.74	-	0.50	+	9.04
36 Jam, Tomato Ketchup & Pickles	0.2454	202.38	198.66	189.16	+	1.87	+	6.99
37 Condiments	0.2656	251.93	251.20	222.38	+	0.29	+	13.29
38 Spices	0.5441	234.33	232.46	214.54	+	0.80	+	9.22
39 Tea	0.8377	214.72	212.06	253.04	+	1.25	-	15.14
Alcoholic Beverages, Tobacco	1.4135	266.65	266.62	218.24	+	0.01	+	22.18
40 Cigarettes	1.3906	267.63	267.63	218.68	+	0.00	+	22.38
41 Betel Leaves & Nuts	0.0229	207.58	205.62	191.56	+	0.95	+	8.36
Clothing and footwear	7.5708	213.01	211.10	196.25	+	0.90	+	8.54
42 Cotton Cloth	1.7286	207.27	206.89	182.05	+	0.18	+	13.85
43 Woolen Cloth	0.8759	230.53	229.10	215.22	+	0.62	+	7.11
44 Readymade Garments	0.9739	212.79	212.38	194.06	+	0.19	+	9.65
45 Woolen Readymade Garments	0.3964	234.72	219.58	200.23	+	6.89	+	17.23
46 Hosiery	0.5094	224.72	222.29	203.32	+	1.09	+	10.53
47 Dopatta	0.4412	229.61	226.62	212.53	+	1.32	+	8.04
48 Cleaning and Laundry	0.2110	235.28	234.46	216.66	+	0.35	+	8.59
49 Tailoring	0.8840	262.50	258.78	235.52	+	1.44	+	11.46
50 Footwear	1.5504	164.29	164.18	169.58	+	0.07	-	3.12
Housing, water, Elec., Gas an	29.4149	174.01	173.39	164.33	+	0.36	+	5.89
51 House Rent	21.8149	162.06	162.06	150.59	+	0.00	+	7.62
52 Construction Input Items	0.5623	236.32	236.73	221.73	-	0.17	+	6.58
53 Construction Wage Rates	0.3331	204.38	204.03	191.07	+	0.17	+	6.97
54 Water Supply	0.4971	149.92	149.92	147.52	+	0.00	+	1.63
55 Electricity	4.3985	231.52	227.44	227.44	+	1.79	+	1.79
56 Gas	1.5756	143.81	143.81	143.81	+	0.00	+	0.00
57 Kerosene Oil	0.0057	260.32	274.86	296.65	-	5.29	-	12.25
58 Firewood Whole	0.2277	268.99	266.60	256.78	+	0.90	+	4.76

Annexure A: Consumer Price Index Numbers by Commodity Groups & Commodities (2007-08=100)

Item and Specification	Weight	Index Numbers			% Change in Nov 2014 over			
		Nov 14	Oct 14 13	Nov	Oct 2014	Nov 2013		
<i>Furnishing and household equi</i>	4.2082	208.26	207.48	194.16	+	0.38	+	7.26
59 Furniture	0.3315	200.00	198.76	183.52	+	0.62	+	8.98
60 Household Textiles	0.6489	205.12	203.12	190.35	+	0.98	+	7.76
61 Household Equipment	0.5936	172.08	171.71	165.35	+	0.22	+	4.07
62 Utensils	0.3212	209.64	209.01	195.29	+	0.30	+	7.35
63 Plastic Products	0.2547	199.79	198.24	189.62	+	0.78	+	5.36
64 Washing Soaps & Detergents	0.7893	222.79	222.35	212.44	+	0.20	+	4.87
65 Sewing Needle & Dr Cell	0.1496	183.61	183.04	172.30	+	0.31	+	6.56
66 Household Servant	1.0432	226.02	225.87	205.48	+	0.07	+	10.00
67 Marriage Hall Charges	0.0762	230.24	227.81	206.52	+	1.07	+	11.49
<i>Health</i>	2.1868	175.37	174.95	165.73	+	0.24	+	5.82
68 Drugs & Medicines	1.2667	147.26	146.84	142.19	+	0.29	+	3.57
69 Medical Equipments	0.0080	221.31	221.31	209.63	+	0.00	+	5.57
70 Doctor (MBBS) Clinic Fee	0.5904	236.75	236.75	216.61	+	0.00	+	9.30
71 Medical Tests	0.3217	172.27	171.03	163.95	+	0.73	+	5.07
<i>Transport</i>	7.2023	190.76	204.84	197.04	-	6.96	-	3.27
72 Motor Vehicles	0.6630	163.75	163.73	160.81	+	0.01	+	1.83
73 Motor Vehicle Accessories	0.2439	229.63	229.28	221.31	+	0.15	+	3.76
74 Motor Fuel	3.0269	175.69	187.14	194.85	-	6.12	-	9.83
75 Mechanical Service	0.4552	209.51	207.30	197.52	+	1.07	+	6.07
76 Motor Vehicle Tax	0.1099	210.18	210.18	153.74	+	0.00	+	36.71
77 Transport Services	2.7034	206.82	231.90	207.87	-	11.01	-	0.73
<i>Communication</i>	3.2198	129.99	129.85	129.71	+	0.11	+	0.22
78 Postal Services	0.0662	221.37	216.26	215.89	+	2.36	+	2.54
79 Communication & Apparatus	3.1536	128.07	128.04	127.90	+	0.02	+	0.13
<i>Recreation and culture</i>	2.0227	189.55	189.39	182.66	+	0.08	+	3.77
80 Recreation & Culture	0.8634	128.04	127.84	126.38	+	0.16	+	1.31
81 Text Books	0.5706	280.89	280.89	267.10	+	0.00	+	5.16
82 Newspapers	0.1934	175.42	175.42	170.49	+	0.00	+	2.89
83 Stationery	0.3953	198.96	198.56	189.69	+	0.20	+	4.89
<i>Education</i>	3.9431	192.41	192.41	167.91	+	0.00	+	14.59
84 Education	3.9431	192.41	192.41	167.91	+	0.00	+	14.59
<i>Restaurants and hotels</i>	1.2286	242.78	242.78	225.76	+	0.00	+	7.54
85 Readymade Food	1.2286	242.78	242.78	225.76	+	0.00	+	7.54
<i>Misc. goods and services</i>	2.7550	220.35	220.36	209.61	+	0.00	+	5.12
86 Personal Care	1.4935	204.40	204.03	191.32	+	0.18	+	6.84
87 Cosmetics	0.3853	185.73	183.89	174.38	+	1.00	+	6.51
88 Blades	0.0322	185.42	184.82	180.83	+	0.32	+	2.54
89 Personal Equipments	0.8440	265.71	267.26	259.16	-	0.58	+	2.53

Annexure B: Wholesale Price Indices by Major Groups & Commodities

(2007-08=100)

Item and Specification	Weight	Index Numbers			% Change in Nov 2014 over		
		Nov 14	Oct 14	Nov 13	Oct 2014	Nov 2013	
General	100.0000	212.26	214.39	212.22	-	0.99	+ 0.02
Agriculture Forestry & Fisher	25.7674	219.26	222.72	220.76	-	1.55	- 0.68
001 Wheat	0.6297	216.76	215.03	231.90	+	0.80	- 6.53
002 Maize	0.6764	191.93	193.55	178.94	-	0.84	+ 7.26
003 Rice	2.4413	181.10	182.99	176.47	-	1.03	+ 2.62
004 Sorghum / Jowar	0.0214	280.16	286.45	263.55	-	2.20	+ 6.30
005 Millet / Bajra	0.0374	171.52	177.35	179.40	-	3.29	- 4.39
006 Vegetables	1.2441	285.84	302.11	367.68	-	5.39	- 22.26
007 Fresh Fruits	1.5144	210.77	250.21	194.51	-	15.76	+ 8.36
008 Dry Fruits	0.2478	220.92	220.55	197.11	+	0.17	+ 12.08
009 Cotton Seeds	1.1511	188.86	186.82	168.77	+	1.09	+ 11.90
010 Other Oil Seeds	0.0722	188.07	186.54	178.95	+	0.82	+ 5.10
011 Edible Roots / Potatoes	0.2540	483.87	535.17	472.04	-	9.59	+ 2.51
012 Stimulant & Spice Crops	0.1634	362.38	397.61	275.65	-	8.86	+ 31.46
013 Pulses	0.4901	202.21	193.91	178.53	+	4.28	+ 13.26
014 Sugar Crops	1.0725	267.92	267.92	267.92	+	0.00	+ 0.00
015 Fibre Crops	5.3169	163.54	170.48	212.61	-	4.07	- 23.08
016 Unmanufactured Tobacco	0.0742	212.62	208.01	181.11	+	2.22	+ 17.40
017 Poultry	0.5633	174.87	172.75	159.59	+	1.23	+ 9.57
018 Raw Milk from Bovine Animals	7.0279	250.31	248.92	223.35	+	0.56	+ 12.07
019 Eggs	0.5034	241.19	218.07	230.34	+	10.60	+ 4.71
020 Raw Animal Materials / Wool	0.0351	173.82	173.82	153.55	+	0.00	+ 13.20
021 Hides & Fur Skins, Raw	0.4834	156.37	154.93	145.71	+	0.93	+ 7.32
022 Fuel Wood in Logs	0.0179	250.46	246.31	236.04	+	1.68	+ 6.11
023 Fish Live Fresh or Chilled	1.7295	259.83	247.49	249.22	+	4.99	+ 4.26
Ores/Minerals, Elec., Gas & W	12.0389	247.62	244.75	243.77	+	1.17	+ 1.58
024 Coal not Agglomerated	0.7508	223.53	223.53	223.53	+	0.00	+ 0.00
025 Natural Gas Liquefied	5.7385	204.85	206.65	204.91	-	0.87	- 0.03
026 Salt & Pure Sodium Chloride	0.0584	247.16	247.16	217.04	+	0.00	+ 13.88
027 Electrical Energy	5.4912	295.61	287.44	287.44	+	2.84	+ 2.84
Food, Beverages, Tobacco, Textil	31.1122	207.90	208.83	201.99	-	0.45	+ 2.93
Food Products, Beverages &	20.0718	216.60	217.20	203.92	-	0.28	+ 6.22
028 Meat of Animals	3.4559	257.41	257.41	239.95	+	0.00	+ 7.28
029 Vegetables & Fruit Juice	0.0058	196.79	196.79	192.59	+	0.00	+ 2.18
030 Dried Fruits & Nuts	0.1733	227.45	222.26	224.54	+	2.34	+ 1.30
031 Fruit Juices	0.3880	171.93	171.93	165.29	+	0.00	+ 4.02
032 Vegetable Oils Refined	1.9242	163.13	163.22	160.83	-	0.06	+ 1.43
033 Vegetable Ghee	1.5632	137.39	137.60	141.61	-	0.15	- 2.98
034 Oil Cakes	0.9611	198.27	203.69	181.80	-	2.66	+ 9.06
035 Processed Liquid Milk	4.4437	242.78	242.78	205.54	+	0.00	+ 18.12
036 Milk & Cream in Solid Form	0.0316	222.04	221.48	190.96	+	0.25	+ 16.28
037 Ice Cream	0.0047	219.91	219.91	209.79	+	0.00	+ 4.82
038 Dairy Products N.E.C	0.0117	237.72	237.45	217.26	+	0.11	+ 9.42
039 Wheat Flour	2.3034	202.78	202.07	209.15	+	0.35	- 3.05
040 Other Cereal Flour	0.0604	140.16	138.03	132.04	+	1.54	+ 6.15
041 Sugar Refined	1.7975	218.74	224.22	229.71	-	2.44	- 4.78
042 Chocolate	0.0139	99.19	99.19	99.19	+	0.00	+ 0.00
043 Sugar Confectionary	0.0738	102.28	102.28	102.28	+	0.00	+ 0.00
044 Coffee & Tea	0.7303	188.05	186.74	229.47	+	0.70	- 18.05
045 Spices	0.1449	188.69	188.66	194.28	+	0.02	- 2.88
046 Other Food Products	0.0336	296.60	296.60	308.23	+	0.00	- 3.77
047 Mineral Water	0.0207	185.63	185.63	181.84	+	0.00	+ 2.08
048 Beverages	0.6303	171.52	171.52	150.11	+	0.00	+ 14.26
049 Tobacco Products	1.2998	290.52	290.52	242.41	+	0.00	+ 19.85
Textiles & Apparels	10.3289	191.71	193.45	199.01	-	0.90	- 3.67
050 Cotton Yarn	5.2491	186.79	190.52	221.66	-	1.96	- 15.73
051 Nylon Yarn	0.1719	161.23	164.37	181.73	-	1.91	- 11.28
052 Blended Yarn	0.1689	194.74	193.92	201.89	+	0.42	- 3.54
053 Woven Fabrics	0.0128	237.79	237.79	224.64	+	0.00	+ 5.85
054 Cotton Fabrics	0.6343	200.51	200.51	187.77	+	0.00	+ 6.78
055 Other Fabrics	1.1016	206.11	206.11	179.06	+	0.00	+ 15.11
056 Silk & Reyon Fabrics	0.7350	177.28	176.47	161.09	+	0.46	+ 10.05
057 Towels	0.1235	260.85	250.33	233.85	+	4.20	+ 11.55
058 Blankets	0.0029	232.93	230.00	196.10	+	1.27	+ 18.78
059 Bed Sheets	0.0913	249.35	247.46	227.19	+	0.76	+ 9.75
060 Quilts	0.0019	188.74	179.47	160.74	+	5.17	+ 17.42

Annexure B: Wholesale Price Indices by Major Groups & Commodities

(2007-08=100)

Item and Specification	Weight	Index Numbers			% Change in Nov 2014 over	
		Nov 14	Oct 14	Nov 13	Oct 2014	Nov 2013
061 Woolen Carpets	0.0383	132.14	132.14	109.52	+ 0.00	+ 20.65
062 Synthetic Carpets	0.0566	126.27	126.27	115.69	+ 0.00	+ 9.15
063 Hosiery Products	0.8832	210.35	210.35	187.81	+ 0.00	+ 12.00
064 Readymade Garments	1.0576	186.77	186.77	153.12	+ 0.00	+ 21.98
Leather Products	0.7115	197.27	195.99	190.96	+ 0.65	+ 3.30
065 Leather Without Hair	0.2973	215.02	212.86	144.55	+ 1.01	+ 48.75
066 Other Leather N.E.C	0.2567	215.39	214.36	276.28	+ 0.48	- 22.04
067 Footwears	0.1575	134.22	134.22	139.49	+ 0.00	- 3.78
Other Transportable Goods	22.3659	206.62	212.36	216.87	- 2.70	- 4.73
068 Timber	0.0165	190.70	189.35	166.37	+ 0.71	+ 14.62
069 Printing Paper	0.4279	169.34	169.34	167.02	+ 0.00	+ 1.39
070 Hard Board	0.1579	229.17	229.17	214.58	+ 0.00	+ 6.80
071 Coke	0.2797	163.45	163.45	163.45	+ 0.00	+ 0.00
072 Motor Spirit	1.5336	159.11	175.05	190.50	- 9.11	- 16.48
073 Diesel Oil	5.2664	235.67	254.48	279.46	- 7.39	- 15.67
074 Kerosine Oil	0.2151	254.18	277.92	288.01	- 8.54	- 11.75
075 Furnace Oil	3.2664	157.65	159.86	184.52	- 1.38	- 14.56
076 Mobil Oil	0.7114	201.53	201.53	193.09	+ 0.00	+ 4.37
077 Chemicals	1.7720	198.36	196.00	169.65	+ 1.20	+ 16.92
078 Dyeing Material	0.1539	143.77	143.77	106.46	+ 0.00	+ 35.05
079 Fertilizers	2.8657	270.69	270.24	263.88	+ 0.17	+ 2.58
080 Pesticides	0.2763	266.71	266.71	224.99	+ 0.00	+ 18.54
081 Insecticides	0.1276	177.41	179.64	131.04	- 1.24	+ 35.39
082 Paints & Varnishes	0.1916	280.05	280.05	249.49	+ 0.00	+ 12.25
083 Medicines	1.1428	144.94	144.59	138.77	+ 0.24	+ 4.45
084 Soaps & Detergents	0.8168	177.83	177.77	178.85	+ 0.03	- 0.57
085 Auto Tyres	0.2703	188.28	188.28	185.73	+ 0.00	+ 1.37
086 Plastic Products	0.4550	214.92	210.90	200.86	+ 1.91	+ 7.00
087 Glass sheets	0.2089	209.86	209.86	206.90	+ 0.00	+ 1.43
088 Other Glass Articles	0.1635	230.45	227.13	213.87	+ 1.46	+ 7.75
089 Ceramics & Sanitary Fixture	0.0244	212.17	212.17	171.02	+ 0.00	+ 24.06
090 Bricks, Blocks & Tiles	0.1566	205.47	204.18	194.89	+ 0.63	+ 5.43
091 Cement	1.8145	209.76	210.17	200.84	- 0.20	+ 4.44
092 Bed Foam	0.0006	155.17	150.83	149.33	+ 2.88	+ 3.91
093 Matches	0.0505	143.20	143.20	143.20	+ 0.00	+ 0.00
Metal Product, Machinery & Eq	8.7156	172.72	172.85	168.01	- 0.08	+ 2.80
094 Pig Iron	0.0593	128.97	128.97	128.97	+ 0.00	+ 0.00
095 Steel Bar & Sheets	1.4022	148.95	150.97	140.55	- 1.34	+ 5.98
096 Pipe Fittings	0.0780	191.94	191.94	166.34	+ 0.00	+ 15.39
097 Steel Products	0.3879	173.80	173.74	170.08	+ 0.03	+ 2.19
098 Engines & Motors	0.0046	109.07	109.07	109.07	+ 0.00	+ 0.00
099 Vacuum Pumps	0.0155	115.39	115.39	115.39	+ 0.00	+ 0.00
100 Air Conditioners	0.0049	195.53	195.53	181.12	+ 0.00	+ 7.96
101 Cultivators	0.0551	226.90	226.90	226.90	+ 0.00	+ 0.00
102 Chuff Cutter	0.1293	149.20	149.20	144.94	+ 0.00	+ 2.94
103 Tractors	0.0028	214.54	214.54	193.29	+ 0.00	+ 10.99
104 Lathe Machines	0.0525	208.81	208.81	174.96	+ 0.00	+ 19.35
105 Concrete Mixture	0.0107	138.83	138.83	138.83	+ 0.00	+ 0.00
106 Fridge,WashM,SewM,Fans,Iron	1.1645	197.85	196.81	186.98	+ 0.53	+ 5.81
107 Electric Wires	0.0912	184.79	184.79	169.09	+ 0.00	+ 9.28
108 Lighting Equipments	1.4431	165.30	164.95	163.43	+ 0.21	+ 1.14
109 Radio & Television	0.1843	126.49	126.49	126.49	+ 0.00	+ 0.00
110 Motor Vehicles	0.0244	183.03	183.03	181.77	+ 0.00	+ 0.69
111 Motorcycles	0.2570	126.92	126.92	125.41	+ 0.00	+ 1.20
112 Bicycles	3.3483	182.84	182.84	180.99	+ 0.00	+ 1.02