



Monthly Review on Price Indices



January, 2014
(Base 2007-08)

Government of Pakistan
Statistics Division
Pakistan Bureau of Statistics
Islamabad

I. Inflation in Brief

1. CPI inflation, General, increased by 7.9% on year-on-year basis in January 2014 as compared to 9.2% in the previous month and 8.1% in January 2013. On month-on-month basis, it increased by 0.5% in January 2014 as compared to a decrease of 1.3% in the previous month and increased by 1.7% in January 2013.
2. Core inflation measured by non-food non-energy CPI (Core NFNE) increased by 8.0% in January 2014 as compared to 8.2% in December 2013 (YoY) and by 9.9% in January 2013. Core NFNE inflation on MoM basis increased by 1.0% in January 2014 as compared to 0.2% a month earlier and 1.2% in January 2013.
3. Core inflation, measured by 20% weighted trimmed mean CPI (Core Trimmed) increased by 8.2% in January 2014 and by 8.7% in December 2013 (YoY) which increased by 9.9% in January 2013. Core Trimmed inflation has increased by 0.6% on MoM basis in January 2014 as compared to 0.4% in December 2013 which increased by 1.0% in January 2013.
4. SPI inflation on YoY basis increased by 7.7% in January 2014 as compared with 11.1% a month earlier and 9.2% in January 2013. On MoM basis, it decreased by 1.2% in January 2014 as compared to a decrease of 2.5% a month earlier and increased by 1.9% in January 2013.
5. WPI inflation on YoY basis increased to 8.1% in January 2014 compared with 8.9% a month earlier and 8.6% in January 2013. WPI inflation on MoM basis increased by 0.5% in January 2014 as compared to a decrease of 1.0% a month earlier and increased by 1.2% in January 2013.
6. Figures 1 and 2 show graphically the data of Table 1. Table 1.1 shows "Period Average" and "YoY" percent changes in indices of three years.

Table 1: Inflation (%) (Base 2007-08)

Period	CPI						Core Inflation				SPI**		WPI	
	General		Food		Non-food		NFNE*		Trimmed		YoY	MoM	YoY	MoM
	YoY	MoM	YoY	MoM	YoY	MoM	YoY	MoM	YoY	MoM				
Dec 12	7.9	0.2	7.7	0.0	8.1	0.4	9.8	0.5	9.2	0.3	8.2	0.0	9.6	0.4
Jan 13	8.1	1.7	8.1	1.9	8.1	1.5	9.9	1.2	9.9	1.0	9.2	1.9	8.6	1.2
Feb 13	7.4	-0.3	7.4	-1.3	7.4	0.3	9.6	0.4	9.2	0.2	9.4	0.1	8.3	0.3
Mar 13	6.6	0.4	6.3	0.5	6.7	0.3	9.0	0.4	8.4	0.2	8.7	0.8	7.9	0.3
Apr 13	5.8	1.1	5.5	1.4	6.0	0.9	8.7	1.1	7.6	0.7	6.6	-0.3	6.8	0.8
May 13	5.1	0.5	6.5	1.1	4.1	0.1	8.1	0.3	6.7	0.3	6.8	0.1	4.1	-0.4
Jun 13	5.9	0.7	7.9	1.1	4.4	0.5	7.8	0.4	6.8	0.6	7.9	2.5	5.2	1.0
Jul 13	8.3	2.0	9.2	3.0	7.6	1.3	8.2	1.5	7.8	1.2	9.8	2.3	6.5	1.6
Aug 13	8.5	1.2	10.3	2.0	7.3	0.6	8.5	0.6	7.9	0.6	10.1	1.5	8.3	2.6
Sep 13	7.4	-0.3	7.9	-1.5	7.0	0.6	8.6	0.5	7.6	0.6	8.8	0.1	8.7	0.7
Oct 13	9.1	2.0	9.8	1.7	8.6	2.2	8.4	0.9	9.0	0.8	10.5	1.2	9.8	1.1
Nov 13	10.9	1.3	13.0	2.6	9.4	0.3	8.5	0.3	9.2	0.4	14.1	3.2	10.4	0.2
Dec 13	9.2	-1.3	9.3	-3.3	9.1	0.2	8.2	0.2	8.7	0.4	11.1	-2.5	8.9	-1.0
Jan 14	7.9	0.5	7.2	0.0 ¹	8.4	0.9	8.0	1.0	8.2	0.6	7.7	-1.2	8.1	0.5

*NFNE is non-food non-energy,

** SPI for quintile 1

¹ Actual figure is -0.04, displayed in rounded figure

Table 1.1 : Period Average and YoY % Changes of Indices (Base 2007-08)

Index	Averages July-January % Changes			January over January % Changes		
	2013-14	2012-13	2011-12	2013-14	2012-13	2011-12
CPI	8.75	8.28	10.76	7.91	8.07	10.10
SPI	10.29	7.71	6.91	7.70	9.21	3.95
WPI	8.67	8.03	14.16	8.11	8.56	8.70

Figure 1: CPI Inflation YoY, Special Indices

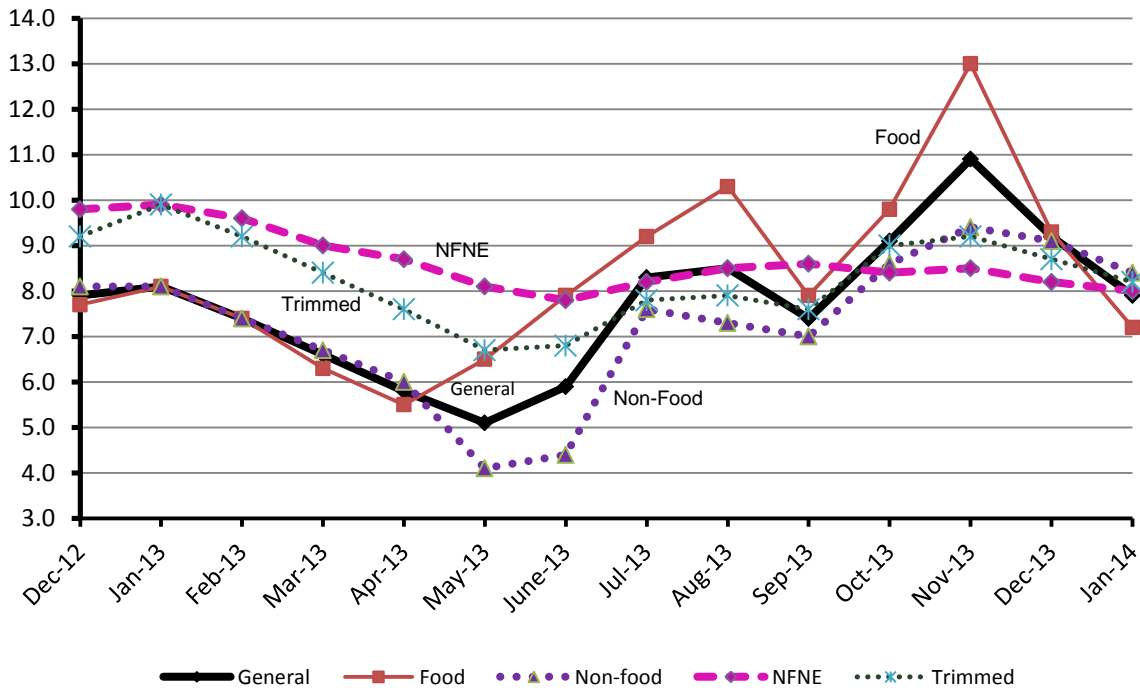
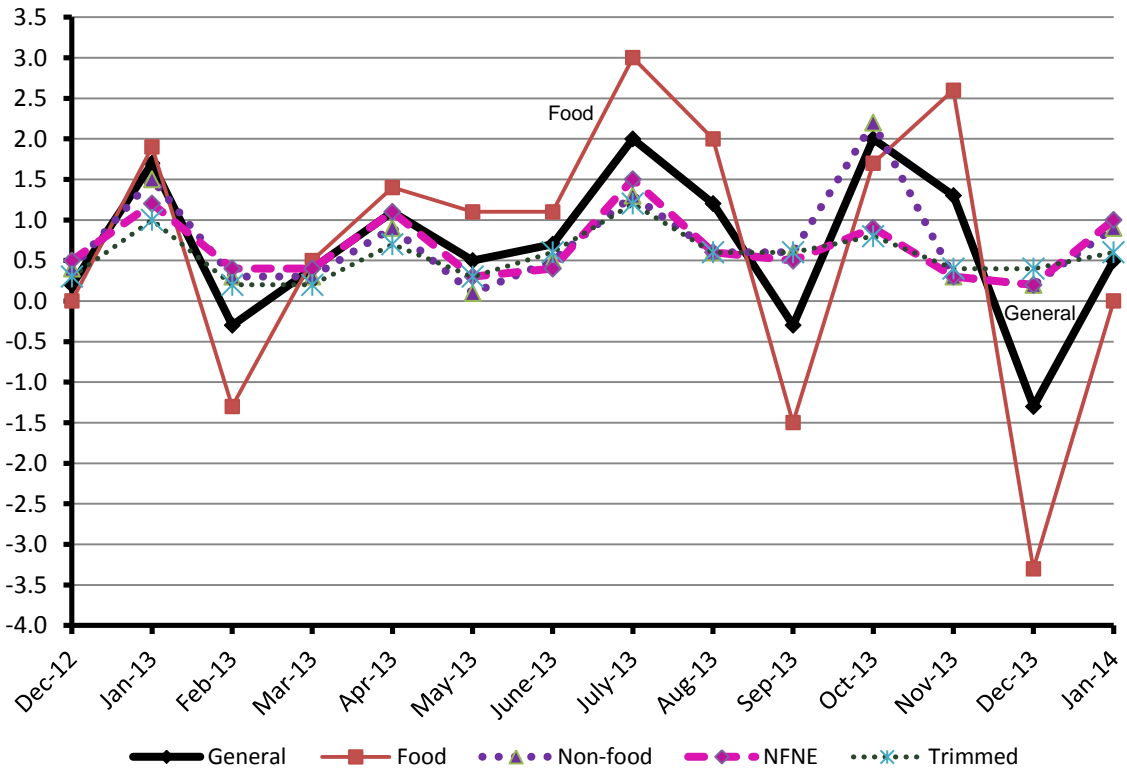


Figure 2: CPI Inflation MoM, Special Indices



II. Consumer Price Index (CPI)

The Consumer Price Index of January, 2014 has increased by 0.49% over December 2013 and increased by 7.91% over corresponding month of last year.

Table 2 : Consumer Price Index by Group of Commodities and Services (Base 2007-08)

No	Group	Group Weight (%)	Indices			% Change Jan 2014 over		Impact (In % points) Jan 2014 Over	
			Jan 2014	Dec 2013	Jan 2013	Dec 2013	Jan 2013	Dec 2013	Jan 2013
	General	100.00	189.60	188.68	175.70	0.49	7.91	0.49	7.91
1.	Food & Non-alcoholic Bev.	34.83	209.65	209.87	196.52	-0.10	6.68	-0.04	2.60
	<i>Non-perishable Food Items</i>	<i>29.84</i>	<i>212.55</i>	<i>211.33</i>	<i>199.77</i>	<i>0.58</i>	<i>6.40</i>	<i>0.19</i>	<i>2.17</i>
	<i>Perishable Food Items</i>	<i>4.99</i>	<i>192.27</i>	<i>201.17</i>	<i>177.08</i>	<i>-4.42</i>	<i>8.58</i>	<i>-0.24</i>	<i>0.43</i>
2.	Alcoholic Bev. & Tobacco	1.41	221.80	220.96	191.18	0.38	16.02	0.01	0.25
3.	Clothing & Footwear	7.57	198.27	196.57	177.05	0.86	11.99	0.07	0.91
4.	Housing, Water, Electricity, Gas & Fuels	29.41	166.94	164.44	152.73	1.52	9.30	0.39	2.38
5.	Furnishing & Household Equipment Maintenance	4.21	196.75	195.84	180.97	0.46	8.72	0.02	0.38
6.	Health	2.19	166.85	166.84	157.50	0.01	5.94	0.00	0.12
7.	Transport	7.20	197.19	197.03	186.76	0.08	5.58	0.01	0.43
8.	Communication	3.22	129.79	129.79	128.61	0.00	0.92	0.00	0.02
9.	Recreation & Culture	2.02	183.35	183.14	166.96	0.11	9.82	0.00	0.19
10.	Education	3.94	168.48	168.34	155.07	0.08	8.65	0.00	0.30
11.	Restaurants & Hotels	1.23	231.12	228.16	204.49	1.30	13.02	0.02	0.19
12.	Miscellaneous	2.76	211.23	210.34	201.75	0.42	4.70	0.01	0.15

Main contributors to month-on-month and year-on-year percentage changes are given below and detail is given in Annexure A.

1. **Month-on-month** Top few commodities which varied from previous month i.e. December 2013 are given below:-

Food Items Increased: Chicken (20.25%), Fresh Vegetables (8.37%), Fresh Fruits (3.38%), Beans (2.83%), Milk Powder (2.07%), Pulse Masoor (1.99%), Honey (1.62%), Pulse Moong (1.57%), Dry Fruits (1.43%), Readymade Food (1.29%), Wheat Products (1.08%) and Meat (1.01%).

Decreased: Potatoes (26.32%), Onions (23.92%), Tomatoes (12.00%), Eggs (8.77%), Sugar (4.06%), Tea (3.58%), Gur (2.91%) and Pulse Gram (1.09%).

Non-food Items Increased: Woolen Readymade Garments (4.13%), House Rent (2.14%), Firewood (1.91%), Sewing Needle & Dry Cell (1.44%), Water Supply (1.39%), Woolen Cloth (1.26%).

Decreased: Motor Fuel (0.12%).

2. **Year-on-year:** Top few commodities which varied from previous year i.e. January 2013 are given below:-

Food Items Increased: Onions (46.80%), Potatoes (28.28%), Wheat Products (18.90%), Wheat (17.83%), Pulse Masoor (17.49%), Chicken (16.45%), Cigarettes (16.20%), Pulse Moong (16.14%), Wheat Flour (15.61%), Readymade Food (13.02%), Beans (12.25%) and Bakery & Confectionary (11.83%).

Decreased: Pulse Gram (30.66%), Besan (27.44%), Gram Whole (21.92%), Tomatoes (19.72%), Eggs (14.00%), Spices (12.74%) and Sugar (2.50%).

Non-food Items Increased: Postal Services (23.74%), Cosmetics (17.82%), Electricity (15.82%), Text Books (15.60%), Sewing Needle & Dry Cell (15.43%), Tailoring (14.58%), Cotton Cloth (13.39%), Woolen Readymade Garments (13.08%), Readymade Garments (12.12%), Cleaning & Laundry (12.05%), Doctor (MBBS) Clinic Fee (11.69%), Woolen Cloth (11.52%) and Construction Input Items (11.17%).

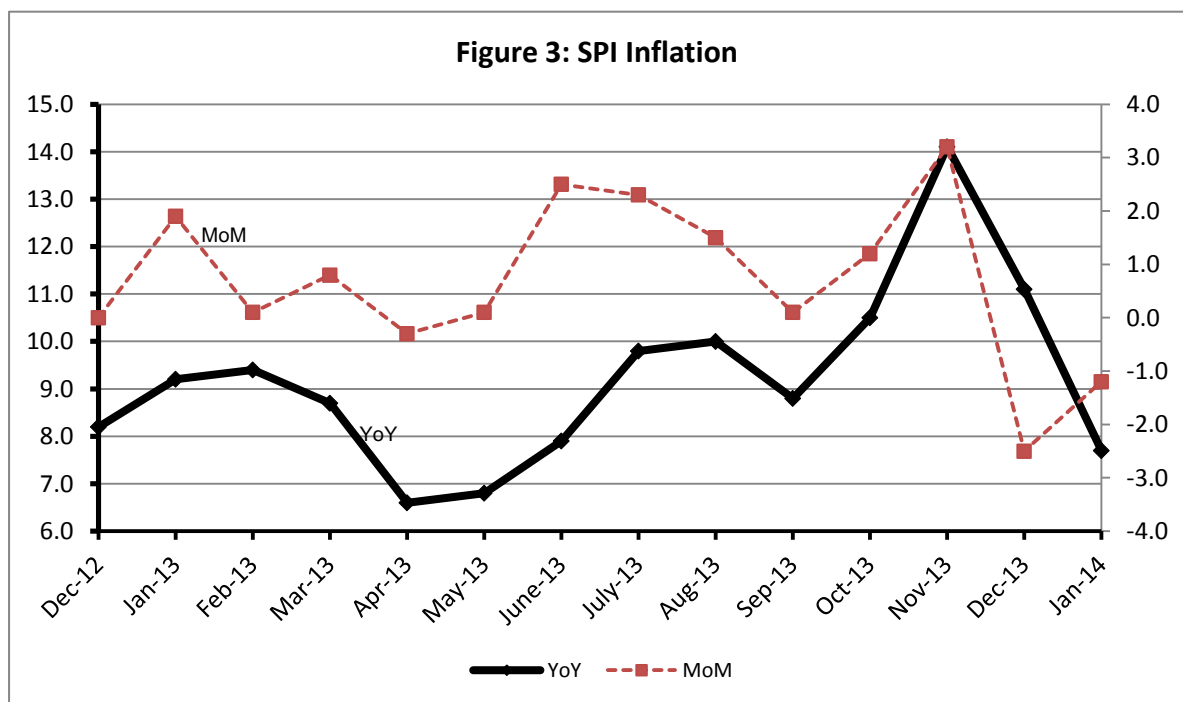
Decreased: Personal Equipments (1.72%).

III. Sensitive Price Indicator

Quintile-wise percentage changes YoY and MoM are given below in Table 3. The series from December 2012 to January 2014 is also graphed below in Figure 3.

Table 3 : Sensitive Price Indicator (Base 2007-08)

Quintiles	Indices			% Change Jan 2014 over	
	Jan 2014	Dec 2014	Jan 2013	Dec 2013	Jan 2013
1	199.67	202.14	185.40	-1.22	7.70
2	205.44	207.70	191.66	-1.09	7.19
3	209.20	211.31	190.30	-1.00	9.93
4	211.43	213.30	191.70	-0.88	10.29
5	210.68	212.02	192.05	-0.63	9.70
Combined	208.99	210.78	190.89	-0.85	9.48



IV. Wholesale Price Index

The Wholesale Price Index for January 2014 increased by 0.53% over December 2013. It is increased by 8.11% over the corresponding month of the last year. YoY and MoM movements, from December 2012 to January 2014 are also graphed below in Figure 4.

Table 4 : Wholesale Price Index by Group of Commodities (Base 2007-08)									
No.	Group	Group Weight (%)	Indices			% Change Jan 2014 over		Impact (in %age points) Jan 2014 over	
			Jan 2014	Dec 2013	Jan 2013	Dec 2013	Jan 2013	Dec 2013	Jan 2013
	General	100.00	211.23	210.11	195.39	0.53	8.11	0.53	8.11
1.	Agriculture, Forestry & Fishery Products	25.77	216.41	212.36	196.33	1.91	10.23	0.50	2.65
2.	Ores & Minerals, Electricity, Gas & Water	12.04	243.69	243.89	216.13	-0.08	12.75	-0.01	1.71
3.	Food Products, Beverages & Tobacco, Textiles, Apparel & Leather Products	31.11	201.47	200.91	190.57	0.28	5.72	0.08	1.73
	i. Food Products, Bev. & Tobacco	20.07	202.88	203.49	193.40	-0.30	4.90	-0.06	0.97
	ii. Textiles and Apparel	10.33	197.40	196.00	189.88	0.71	3.96	0.07	0.40
	iii. Leather Products	0.71	220.58	199.45	121.00	10.59	82.30	0.07	0.36
4.	Other Transportable Goods except Metal Products, Machinery & Equipments	22.37	217.85	218.30	204.00	-0.21	6.79	-0.05	1.59
5.	Metal Products, Machinery & Equipments	8.72	168.90	168.65	159.08	0.15	6.17	0.01	0.44

Main contributors to month-on-month and year-on-year percentage changes are given below and detail is given in Annexure B.

1. **Month-on-month** Top few commodities which varied from previous month i.e. December, 2013 are given below:-

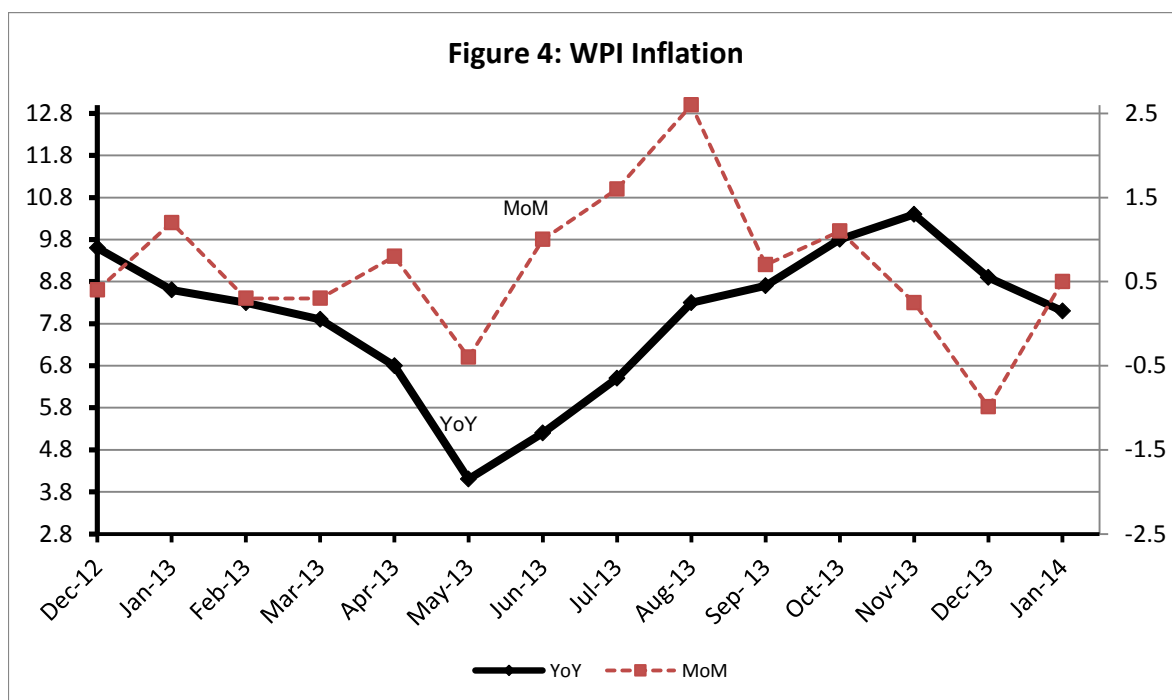
Increased: Poultry (28.21%), Other Leather N.E.C (14.82%), Stimulants & Spice Crops (13.84%), Ceramics & Sanitary Fixture (12.62%), Cotton Seeds (11.65%), Jowar (11.15%), Leather Without Hair (8.37%), Fibre Crops (7.67%), Blankets (7.17%) and Electric Wires (5.41%).

Decreased: Edible Roots/Potatoes (26.60%), Eggs (11.23%), Coffee & Tea (5.11%), Sugar Refined (2.90%), Other Cereal Flour (2.32%), Fish (2.27%), Vegetables (2.25%) and spices (1.76%).

2. **Year-on-year** Top few commodities which varied from previous year i.e. January, 2013 are given below:-

Increased: Other Leather N.E.C (178.90%), Stimulants and Spice Crops (86.04%), Leather without Hair (47.15%), Edible Roots/ Potatoes (45.46%), Lathe Machine (41.39%), Salt & Pure sodium chloride (38.34%), Jowar (35.60%), Fish (30.07%), Electrical Energy (27.13%) and Fibre Crops (26.22%).

Decreased: Other Cereal Flour (34.14%), Spices (30.12%), Eggs (11.79%) and Fresh Fruits (10.61%)



Annexure A: Consumer Price Index Numbers by Commodity Groups & Commodities (2007-2008=100)

Item and Specification	Weight	Index Numbers			% Change in Jan 2014 over	
		Jan 14	Dec 13	Jan 13	Dec 2013	Jan 2013
General	100.0000	189.60	188.68	175.70	+ 0.49	+ 7.91
Food & Non-alcoholic Beverage	34.8343	209.64	209.87	196.52	- 0.11	+ 6.68
01 Wheat	0.3477	233.51	232.97	198.18	+ 0.23	+ 17.83
02 Wheat Flour	4.1648	231.86	232.04	200.55	- 0.08	+ 15.61
03 Wheat Product	0.0959	221.40	219.04	186.20	+ 1.08	+ 18.90
04 Besan	0.1500	172.90	171.84	238.28	+ 0.62	- 27.44
05 Rice	1.5821	193.88	194.51	179.71	- 0.32	+ 7.88
06 Cereals	0.1563	230.58	229.43	209.94	+ 0.50	+ 9.83
07 Bakery & Confectionary	1.1550	199.21	197.89	178.14	+ 0.67	+ 11.83
08 Nimco	0.4574	220.99	220.68	198.97	+ 0.14	+ 11.07
09 Meat	2.4303	231.91	229.58	219.53	+ 1.01	+ 5.64
10 Chicken	1.3596	222.46	185.00	191.04	+ 20.25	+ 16.45
11 Fish	0.2970	214.11	213.01	201.51	+ 0.52	+ 6.25
12 Milk Fresh	6.6800	232.61	232.61	218.93	+ 0.00	+ 6.25
13 Milk Products	0.6338	227.93	227.69	211.17	+ 0.11	+ 7.94
14 Milk Powder	0.1129	203.41	199.29	185.48	+ 2.07	+ 9.67
15 Eggs	0.4555	216.04	236.82	251.22	- 8.77	- 14.00
16 Mustard Oil	0.0952	159.97	160.20	160.75	- 0.14	- 0.49
17 Cooking Oil	1.7538	161.75	161.53	162.30	+ 0.14	- 0.34
18 Vegetable Ghee	2.0714	158.24	157.90	158.98	+ 0.22	- 0.47
19 Dry Fruits	0.2543	231.25	227.99	211.55	+ 1.43	+ 9.31
20 Fresh Fruits	1.8649	180.15	174.26	179.14	+ 3.38	+ 0.56
21 Pulse Masoor	0.2712	171.13	167.79	145.66	+ 1.99	+ 17.49
22 Pulse Moong	0.2336	256.55	252.58	220.90	+ 1.57	+ 16.14
23 Pulse Mash (Washed)	0.2098	191.91	191.03	191.57	+ 0.46	+ 0.18
24 Pulse Gram	0.2361	161.82	163.60	233.36	- 1.09	- 30.66
25 Gram Whole	0.1616	176.10	176.98	225.54	- 0.50	- 21.92
26 Beans	0.0269	243.84	237.14	217.23	+ 2.83	+ 12.25
27 Potatoes	0.4776	201.30	273.22	156.92	- 26.32	+ 28.28
28 Onion	0.5417	225.89	296.92	153.88	- 23.92	+ 46.80
29 Tomatoes	0.4496	167.79	190.66	209.01	- 12.00	- 19.72
30 Fresh Vegetables	1.6571	198.94	183.57	179.49	+ 8.37	+ 10.84
31 Sugar	1.0445	188.01	195.97	192.83	- 4.06	- 2.50
32 Gur	0.0220	243.92	251.24	225.19	- 2.91	+ 8.32
33 Honey	0.0446	274.70	270.31	254.80	+ 1.62	+ 7.81
34 SweetMeat	0.2483	223.94	221.74	207.27	+ 0.99	+ 8.04
35 Beverages	1.1990	188.24	189.72	169.71	- 0.78	+ 10.92
36 Jam, Tomato Ketchup & Pickles	0.2454	190.94	190.20	181.23	+ 0.39	+ 5.36
37 Condiments	0.2656	228.82	226.94	214.25	+ 0.83	+ 6.80
38 Spices	0.5441	216.53	215.63	248.13	+ 0.42	- 12.74
39 Tea	0.8377	238.69	247.54	220.38	- 3.58	+ 8.31
Alcoholic Beverages, Tobacco	1.4135	221.80	220.95	191.17	+ 0.38	+ 16.02
40 Cigarettes	1.3906	222.30	221.44	191.31	+ 0.39	+ 16.20
41 Betel Leaves & Nuts	0.0229	191.06	191.21	182.64	- 0.08	+ 4.61
Clothing & Footwear	7.5708	198.28	196.57	177.05	+ 0.87	+ 11.99
42 Cotton Cloth	1.7286	183.92	182.80	162.20	+ 0.61	+ 13.39
43 Woolen Cloth	0.8759	220.65	217.90	197.86	+ 1.26	+ 11.52
44 Readymade Garments	0.9739	197.37	195.84	176.04	+ 0.78	+ 12.12
45 Woolen Readymade Garments	0.3964	217.21	208.59	192.09	+ 4.13	+ 13.08
46 Hosiery	0.5094	207.84	206.31	187.80	+ 0.74	+ 10.67
47 Dopatta	0.4412	215.58	214.25	195.26	+ 0.62	+ 10.41
48 Cleaning and Laundry	0.2110	219.82	217.89	196.18	+ 0.89	+ 12.05
49 Tailoring	0.8840	239.23	237.19	208.79	+ 0.86	+ 14.58
50 Footwear	1.5504	163.02	162.96	149.25	+ 0.04	+ 9.23

Annexure A: Consumer Price Index Numbers by Commodity Groups & Commodities (2007-2008=100)

Item and Specification	Weight	Index Numbers			% Change in Jan 2014 over			
		Jan 14	Dec 13	Jan 13	Dec 2013	Jan 2013		
Housing, Water, Elec., Gas, Other	29.4149	166.93	164.44	152.73	+	1.51	+	9.30
51 House Rent	21.8149	153.82	150.59	142.46	+	2.14	+	7.97
52 Construction Input Items	0.5623	226.10	225.47	203.39	+	0.28	+	11.17
53 Construction Wage Rates	0.3331	192.79	191.24	174.67	+	0.81	+	10.37
54 Water Supply	0.4971	149.57	147.52	134.90	+	1.39	+	10.87
55 Electricity	4.3985	227.44	227.44	196.37	+	0.00	+	15.82
56 Gas	1.5756	143.81	143.81	142.58	+	0.00	+	0.86
57 Kerosene Oil	0.0057	296.77	296.77	274.86	+	0.00	+	7.97
58 Firewood Whole	0.2277	265.82	260.84	242.39	+	1.91	+	9.67
Furnished H.Hold Equip.& Hous	4.2082	196.74	195.83	180.97	+	0.46	+	8.71
59 Furniture	0.3315	188.50	187.36	170.15	+	0.61	+	10.78
60 Household Textiles	0.6489	195.40	193.78	177.05	+	0.84	+	10.36
61 Household Equipment	0.5936	166.28	166.01	158.42	+	0.16	+	4.96
62 Utensils	0.3212	198.04	197.31	178.48	+	0.37	+	10.96
63 Plastic Products	0.2547	191.12	190.40	175.86	+	0.38	+	8.68
64 Washing Soaps & Detergents	0.7893	214.27	213.77	195.92	+	0.23	+	9.37
65 Sewing Needle & Dr Cell	0.1496	175.61	173.11	152.13	+	1.44	+	15.43
66 Household Servant	1.0432	207.39	206.44	193.59	+	0.46	+	7.13
67 Marriage Hall Charges	0.0762	208.57	207.66	193.63	+	0.44	+	7.72
Health	2.1868	166.84	166.83	157.50	+	0.01	+	5.93
68 Drugs & Medicines	1.2667	142.28	142.27	139.04	+	0.01	+	2.33
69 Medical Equipments	0.0080	209.84	209.70	200.84	+	0.07	+	4.48
70 Doctor (MBBS) Clinic Fee	0.5904	219.23	219.23	196.28	+	0.00	+	11.69
71 Medical Tests	0.3217	166.32	166.32	157.96	+	0.00	+	5.29
Transport	7.2023	197.19	197.03	186.75	+	0.08	+	5.59
72 Motor Vehicles	0.6630	162.19	161.22	153.42	+	0.60	+	5.72
73 Motor Vehicle Accessories	0.2439	222.42	222.12	211.06	+	0.14	+	5.38
74 Motor Fuel	3.0269	193.91	194.14	184.37	-	0.12	+	5.17
75 Mechanical Service	0.4552	200.52	198.85	185.06	+	0.84	+	8.35
76 Motor Vehicle Tax	0.1099	153.74	153.74	152.02	+	0.00	+	1.13
77 Transport Services	2.7034	208.36	208.24	197.09	+	0.06	+	5.72
Communication	3.2198	129.79	129.79	128.62	+	0.00	+	0.91
78 Postal Services	0.0662	215.89	215.89	174.47	+	0.00	+	23.74
79 Communication & Apparatus	3.1536	127.98	127.98	127.65	+	0.00	+	0.26
Recreation & Culture	2.0227	183.34	183.13	166.96	+	0.11	+	9.81
80 Recreation & Culture	0.8634	126.94	126.50	122.30	+	0.35	+	3.79
81 Text Books	0.5706	267.10	267.10	231.06	+	0.00	+	15.60
82 Newspapers	0.1934	172.95	172.95	157.59	+	0.00	+	9.75
83 Stationery	0.3953	190.71	190.60	176.55	+	0.06	+	8.02
Education	3.9431	168.48	168.34	155.07	+	0.08	+	8.65
84 Education	3.9431	168.48	168.34	155.07	+	0.08	+	8.65
Restaurants & Hotels	1.2286	231.11	228.16	204.48	+	1.29	+	13.02
85 Readymade Food	1.2286	231.11	228.16	204.48	+	1.29	+	13.02
Miscellaneous Goods & Service	2.7550	211.24	210.35	201.76	+	0.42	+	4.70
86 Personal Care	1.4935	193.97	192.91	180.95	+	0.55	+	7.20
87 Cosmetics	0.3853	176.55	176.30	149.85	+	0.14	+	17.82
88 Blades	0.0322	182.08	181.71	174.21	+	0.20	+	4.52
89 Personal Equipments	0.8440	258.77	257.84	263.31	+	0.36	-	1.72

Annexure B: Wholesale Price Indices by Major Groups & Commodities

(2007-2008=100)

Item and Specification	Weight	Index Numbers			% Change in Jan 2014 over		
		Jan 14	Dec 13	Jan 13	Dec 2013	Jan 2013	
General	100.0000	211.23	210.11	195.39	+	0.53	+ 8.11
Agriculture Forestry & Fisher	25.7674	216.41	212.36	196.33	+	1.91	+ 10.23
001 Wheat	0.6297	243.48	244.00	205.59	-	0.21	+ 18.43
002 Maize	0.6764	176.18	175.94	169.08	+	0.14	+ 4.20
003 Rice	2.4413	177.05	176.55	163.12	+	0.28	+ 8.54
004 Sorghum / Jowar	0.0214	276.14	248.44	203.64	+	11.15	+ 35.60
005 Millet / Bajra	0.0374	174.47	175.79	170.64	-	0.75	+ 2.24
006 Vegetables	1.2441	215.08	220.02	188.53	-	2.25	+ 14.08
007 Fresh Fruits	1.5144	187.74	183.06	210.03	+	2.56	- 10.61
008 Dry Fruits	0.2478	203.14	201.08	182.41	+	1.02	+ 11.36
009 Cotton Seeds	1.1511	188.10	168.48	165.83	+	11.65	+ 13.43
010 Other Oil Seeds	0.0722	184.14	182.45	187.70	+	0.93	- 1.90
011 Edible Roots / Potatoes	0.2540	217.35	296.10	149.42	-	26.60	+ 45.46
012 Stimulant & Spice Crops	0.1634	329.72	289.64	177.23	+	13.84	+ 86.04
013 Pulses	0.4901	187.07	186.65	206.62	+	0.23	- 9.46
014 Sugar Crops	1.0725	267.92	267.92	267.92	+	0.00	+ 0.00
015 Fibre Crops	5.3169	226.32	210.20	179.31	+	7.67	+ 26.22
016 Unmanufactured Tobacco	0.0742	188.70	187.30	169.08	+	0.75	+ 11.60
017 Poultry	0.5633	238.28	185.85	197.99	+	28.21	+ 20.35
018 Raw Milk from Bovine Animals	7.0279	224.04	224.04	219.99	+	0.00	+ 1.84
019 Eggs	0.5034	218.04	245.62	247.18	-	11.23	- 11.79
020 Raw Animal Materials / Wool	0.0351	156.85	153.55	137.58	+	2.15	+ 14.01
021 Hides & Fur Skins, Raw	0.4834	147.80	147.61	139.23	+	0.13	+ 6.16
022 Fuel Wood in Logs	0.0179	239.54	238.23	218.79	+	0.55	+ 9.48
023 Fish Live Fresh or Chilled	1.7295	243.95	249.61	187.55	-	2.27	+ 30.07
Ores/Minerals, Elec., Gas & W	12.0389	243.68	243.89	216.13	-	0.09	+ 12.75
024 Coal not Agglomerated	0.7508	223.53	223.53	223.53	+	0.00	+ 0.00
025 Natural Gas Liquified	5.7385	204.61	205.11	206.15	-	0.24	- 0.75
026 Salt & Pure Sodium Chloride	0.0584	228.23	220.90	164.98	+	3.32	+ 38.34
027 Electrical Energy	5.4912	287.44	287.44	226.10	+	0.00	+ 27.13
Food, Beverages, Tobacco, Textil	31.1122	201.47	200.91	190.57	+	0.28	+ 5.72
Food Products, Beverages &	20.0718	202.88	203.49	193.40	-	0.30	+ 4.90
028 Meat of Animals	3.4559	239.95	239.95	229.17	+	0.00	+ 4.70
029 Vegetables & Fruit Juice	0.0058	193.91	193.79	189.09	+	0.06	+ 2.55
030 Dried Fruits & Nuts	0.1733	222.32	223.51	223.34	-	0.53	- 0.46
031 Fruit Juices	0.3880	166.02	166.02	157.91	+	0.00	+ 5.14
032 Vegetable Oils Refined	1.9242	161.86	161.60	157.28	+	0.16	+ 2.91
033 Vegetable Ghee	1.5632	142.28	142.45	140.11	-	0.12	+ 1.55
034 Oil Cakes	0.9611	191.76	183.79	173.15	+	4.34	+ 10.75
035 Processed Liquid Milk	4.4437	210.94	210.94	208.43	+	0.00	+ 1.20
036 Milk & Cream in Solid Form	0.0316	202.00	193.72	171.59	+	4.27	+ 17.72
037 Ice Cream	0.0047	209.79	209.79	167.68	+	0.00	+ 25.11
038 Dairy Products N.E.C	0.0117	218.81	217.26	204.91	+	0.71	+ 6.78
039 Wheat Flour	2.3034	214.41	214.45	184.41	-	0.02	+ 16.27
040 Other Cereal Flour	0.0604	133.04	136.20	202.00	-	2.32	- 34.14
041 Sugar Refined	1.7975	196.44	202.31	201.05	-	2.90	- 2.29
042 Chocolate	0.0139	99.19	99.19	99.19	+	0.00	+ 0.00
043 Sugar Confectionary	0.0738	102.28	102.28	102.28	+	0.00	+ 0.00
044 Coffee & Tea	0.7303	214.63	226.18	200.60	-	5.11	+ 6.99
045 Spices	0.1449	190.97	194.39	273.27	-	1.76	- 30.12
046 Other Food Products	0.0336	308.48	308.23	319.52	+	0.08	- 3.46
047 Mineral Water	0.0207	181.84	181.84	168.32	+	0.00	+ 8.03
048 Beverages	0.6303	152.12	152.77	137.86	-	0.43	+ 10.34
049 Tobacco Products	1.2998	242.41	242.41	208.80	+	0.00	+ 16.10
Textiles & Apparels	10.3289	197.40	196.00	189.88	+	0.71	+ 3.96
050 Cotton Yarn	5.2491	217.06	215.52	214.74	+	0.71	+ 1.08
051 Nylon Yarn	0.1719	180.95	181.73	180.86	-	0.43	+ 0.05
052 Blended Yarn	0.1689	201.89	201.89	194.85	+	0.00	+ 3.61
053 Woven Fabrics	0.0128	226.82	226.82	206.00	+	0.00	+ 10.11
054 Cotton Fabrics	0.6343	187.77	187.77	174.17	+	0.00	+ 7.81
055 Other Fabrics	1.1016	179.06	179.06	165.62	+	0.00	+ 8.11
056 Silk & Reyon Fabrics	0.7350	161.09	161.09	154.21	+	0.00	+ 4.46
057 Towels	0.1235	234.25	234.25	203.06	+	0.00	+ 15.36

Annexure B: Wholesale Price Indices by Major Groups & Commodities

(2007-2008=100)

Item and Specification	Weight	Index Numbers			% Change in Jan 2014 over		
		Jan 14	Dec 13	Jan 13	Dec 2013	Jan 2013	
058 Blankets	0.0029	219.66	204.97	185.21	+	7.17	+ 18.60
059 Bed Sheets	0.0913	236.05	236.05	204.38	+	0.00	+ 15.50
060 Quilts	0.0019	172.42	169.53	152.84	+	1.70	+ 12.81
061 Woolen Carpets	0.0383	113.69	113.69	106.55	+	0.00	+ 6.70
062 Synthetic Carpets	0.0566	116.10	116.10	114.41	+	0.00	+ 1.48
063 Hosiery Products	0.8832	195.18	187.81	181.12	+	3.92	+ 7.76
064 Readymade Garments	1.0576	153.12	153.12	138.14	+	0.00	+ 10.84
Leather Products	0.7115	220.57	199.44	120.99	+	10.59	+ 82.30
065 Leather Without Hair	0.2973	161.61	149.13	109.83	+	8.37	+ 47.15
066 Other Leather N.E.C	0.2567	341.85	297.73	122.57	+	14.82	+ <u>178.9</u>
067 Footwears	0.1575	134.22	134.22	139.49	+	0.00	- 3.78
Other Transportable Goods	22.3659	217.85	218.30	204.00	-	0.21	+ 6.79
068 Timber	0.0165	174.55	173.24	148.36	+	0.76	+ 17.65
069 Printing Paper	0.4279	169.75	169.75	155.35	+	0.00	+ 9.27
070 Hard Board	0.1579	229.17	229.17	194.44	+	0.00	+ 17.86
071 Coke	0.2797	163.45	163.45	163.45	+	0.00	+ 0.00
072 Motor Spirit	1.5336	190.50	190.50	172.73	+	0.00	+ 10.29
073 Diesel Oil	5.2664	279.46	279.46	261.36	+	0.00	+ 6.93
074 Kerosine Oil	0.2151	288.01	288.01	264.94	+	0.00	+ 8.71
075 Furnace Oil	3.2664	183.45	184.93	168.81	-	0.80	+ 8.67
076 Mobil Oil	0.7114	193.09	193.09	184.85	+	0.00	+ 4.46
077 Chemicals	1.7720	171.72	172.77	156.16	-	0.61	+ 9.96
078 Dyeing Material	0.1539	107.55	107.55	104.26	+	0.00	+ 3.16
079 Fertilizers	2.8657	264.18	266.56	259.68	-	0.89	+ 1.73
080 Pesticides	0.2763	225.48	225.48	197.49	+	0.00	+ 14.17
081 Insecticides	0.1276	133.78	133.78	117.42	+	0.00	+ 13.93
082 Paints & Varnishes	0.1916	267.31	265.56	238.30	+	0.66	+ 12.17
083 Medicines	1.1428	139.69	138.77	139.54	+	0.66	+ 0.11
084 Soaps & Detergents	0.8168	181.22	181.19	168.41	+	0.02	+ 7.61
085 Auto Tyres	0.2703	185.73	185.73	180.99	+	0.00	+ 2.62
086 Plastic Products	0.4550	202.31	201.76	192.40	+	0.27	+ 5.15
087 Glass sheets	0.2089	207.75	207.75	190.93	+	0.00	+ 8.81
088 Other Glass Articles	0.1635	214.09	214.09	191.72	+	0.00	+ 11.67
089 Ceramics & Sanitary Fixture	0.0244	192.64	171.05	157.45	+	12.62	+ 22.35
090 Bricks, Blocks & Tiles	0.1566	197.12	196.76	177.53	+	0.18	+ 11.03
091 Cement	1.8145	205.56	204.86	187.78	+	0.34	+ 9.47
092 Bed Foam	0.0006	149.67	149.67	142.83	+	0.00	+ 4.79
093 Matches	0.0505	143.20	143.20	133.50	+	0.00	+ 7.27
Metal Product, Machinery & Eq	8.7156	168.90	168.65	159.07	+	0.15	+ 6.18
094 Pig Iron	0.0593	128.97	128.97	128.97	+	0.00	+ 0.00
095 Steel Bar & Sheets	1.4022	140.23	140.33	132.75	-	0.07	+ 5.63
096 Pipe Fittings	0.0780	168.33	168.00	141.47	+	0.20	+ 18.99
097 Steel Products	0.3879	170.19	170.12	161.94	+	0.04	+ 5.09
098 Engines & Motors	0.0046	109.07	109.07	109.07	+	0.00	+ 0.00
099 Vacuum Pumps	0.0155	115.39	115.39	115.39	+	0.00	+ 0.00
100 Air Conditioners	0.0049	181.12	181.12	172.67	+	0.00	+ 4.89
101 Cultivators	0.0551	226.90	226.90	189.23	+	0.00	+ 19.91
102 Chuff Cutter	0.1293	144.94	144.94	138.54	+	0.00	+ 4.62
103 Tractors	0.0028	193.29	193.29	161.96	+	0.00	+ 19.34
104 Lathe Machines	0.0525	208.81	208.81	147.68	+	0.00	+ 41.39
105 Concrete Mixture	0.0107	138.83	138.83	138.83	+	0.00	+ 0.00
106 Fridge, WashM, SewM, Fans, Iron	1.1645	192.24	191.24	166.45	+	0.52	+ 15.49
107 Electric Wires	0.0912	178.73	169.55	159.57	+	5.41	+ 12.01
108 Lighting Equipments	1.4431	162.86	162.71	148.26	+	0.09	+ 9.85
109 Radio & Television	0.1843	126.49	126.49	126.46	+	0.00	+ 0.02
110 Motor Vehicles	0.0244	182.16	181.93	173.75	+	0.13	+ 4.84
111 Motorcycles	0.2570	125.58	125.41	125.19	+	0.14	+ 0.31
112 Bicycles	3.3483	180.99	180.99	177.87	+	0.00	+ 1.75