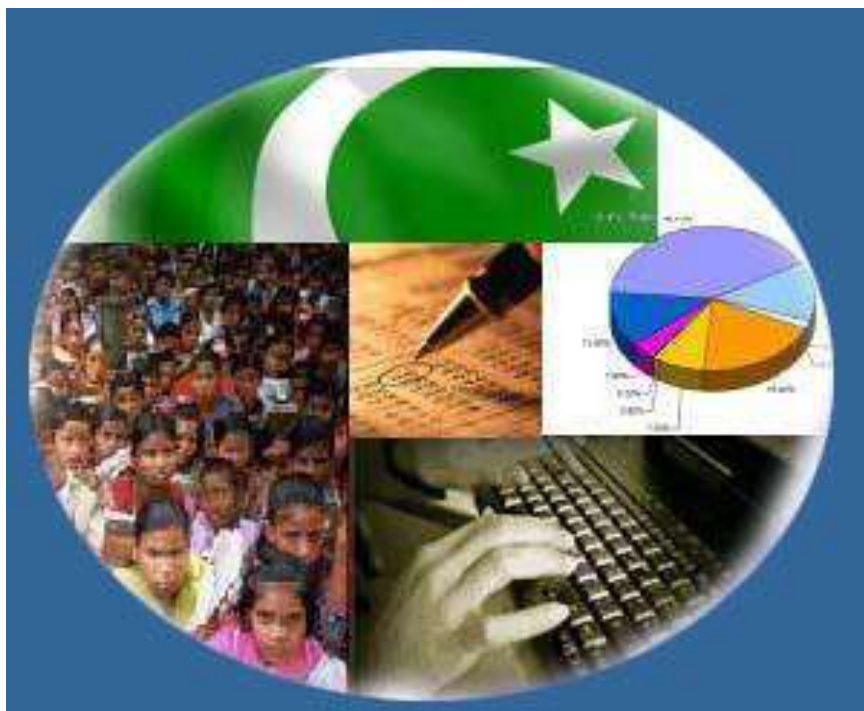




Monthly Review on Price Indices



December, 2013
(Base 2007-08)

Government of Pakistan
Statistics Division
Pakistan Bureau of Statistics
Islamabad

I. Inflation in Brief

1. CPI inflation, General, increased by 9.2% on year-on-year basis in December 2013 as compared to 10.9% in the previous month and 7.9% in December 2012. On month-on-month basis, it decreased by 1.3% in December 2013 as compared to an increase of 1.3% in the previous month and 0.2% in December 2012.
2. Core inflation measured by non-food non-energy CPI (Core NFNE) increased by 8.2% in December 2013 as compared to 8.5% in November 2013 (YoY) and by 9.8% in December 2012. Core NFNE inflation on MoM basis increased by 0.2% in December 2013 as compared to 0.3% a month earlier and 0.5% in December 2012.
3. Core inflation, measured by 20% weighted trimmed mean CPI (Core Trimmed) increased by 8.7% in December 2013 and by 9.2% in November 2013 (YoY) which increased by 9.2% in December 2012. Core Trimmed inflation has increased by 0.4% on MoM basis in December 2013 as compared to 0.4% in November 2013 which increased by 0.3% in December 2012.
4. SPI inflation on YoY basis increased by 11.1% in December 2013 as compared with 14.1% a month earlier and 8.2% in December 2012. On MoM basis, it decreased by 2.5% in December 2013 as compared to an increase of 3.2% a month earlier and 0.05% in December 2012.
5. WPI inflation on YoY basis increased to 8.9% in December 2013 compared with 10.4% a month earlier and 9.6% in December 2012. WPI inflation on MoM basis decreased by 1.0% in December 2013 as compared to an increase of 0.2% a month earlier and 0.4% in December 2012.
6. Figures 1 and 2 show graphically the data of Table 1. Table 1.1 shows "Period Average" and "YoY" percent changes in indices of three years.

Table 1: Inflation (%) (Base 2007-08)

Period	CPI						Core Inflation				SPI**		WPI	
	General		Food		Non-food		NFNE*		Trimmed		YoY	MoM	YoY	MoM
	YoY	MoM	YoY	MoM	YoY	MoM	YoY	MoM	YoY	MoM				
Nov 12	6.9	-0.4	5.3	-0.3	8.1	-0.4	9.7	0.2	8.8	0.2	6.0	0.0	7.7	-0.4
Dec 12	7.9	0.2	7.7	0.0	8.1	0.4	9.8	0.5	9.2	0.3	8.2	0.0	9.6	0.4
Jan 13	8.1	1.7	8.1	1.9	8.1	1.5	9.9	1.2	9.9	1.0	9.2	1.9	8.6	1.2
Feb 13	7.4	-0.3	7.4	-1.3	7.4	0.3	9.6	0.4	9.2	0.2	9.4	0.1	8.3	0.3
Mar 13	6.6	0.4	6.3	0.5	6.7	0.3	9.0	0.4	8.4	0.2	8.7	0.8	7.9	0.3
Apr 13	5.8	1.1	5.5	1.4	6.0	0.9	8.7	1.1	7.6	0.7	6.6	-0.3	6.8	0.8
May 13	5.1	0.5	6.5	1.1	4.1	0.1	8.1	0.3	6.7	0.3	6.8	0.1	4.1	-0.4
Jun 13	5.9	0.7	7.9	1.1	4.4	0.5	7.8	0.4	6.8	0.6	7.9	2.5	5.2	1.0
Jul 13	8.3	2.0	9.2	3.0	7.6	1.3	8.2	1.5	7.8	1.2	9.8	2.3	6.5	1.6
Aug 13	8.5	1.2	10.3	2.0	7.3	0.6	8.5	0.6	7.9	0.6	10.1	1.5	8.3	2.6
Sep 13	7.4	-0.3	7.9	-1.5	7.0	0.6	8.6	0.5	7.6	0.6	8.8	0.1	8.7	0.7
Oct 13	9.1	2.0	9.8	1.7	8.6	2.2	8.4	0.9	9.0	0.8	10.5	1.2	9.8	1.1
Nov 13	10.9	1.3	13.0	2.6	9.4	0.3	8.5	0.3	9.2	0.4	14.1	3.2	10.4	0.2
Dec 13	9.2	-1.3	9.3	-3.3	9.1	0.2	8.2	0.2	8.7	0.4	11.1	-2.5	8.9	-1.0

*NFNE is non-food non-energy,

** SPI for quintile 1

Table 1.1 : Period Average and YoY % Changes of Indices (Base 2007-08)

Index	Averages July-December % Changes			December over December % Changes		
	2013-14	2012-13	2011-12	2013-14	2012-13	2011-12
CPI	8.89	8.32	10.87	9.18	7.93	9.75
SPI	10.74	7.46	7.42	11.12	8.22	2.99
WPI	8.76	7.94	15.14	8.88	9.64	8.32

Figure 1: CPI Inflation YoY, Special Indices

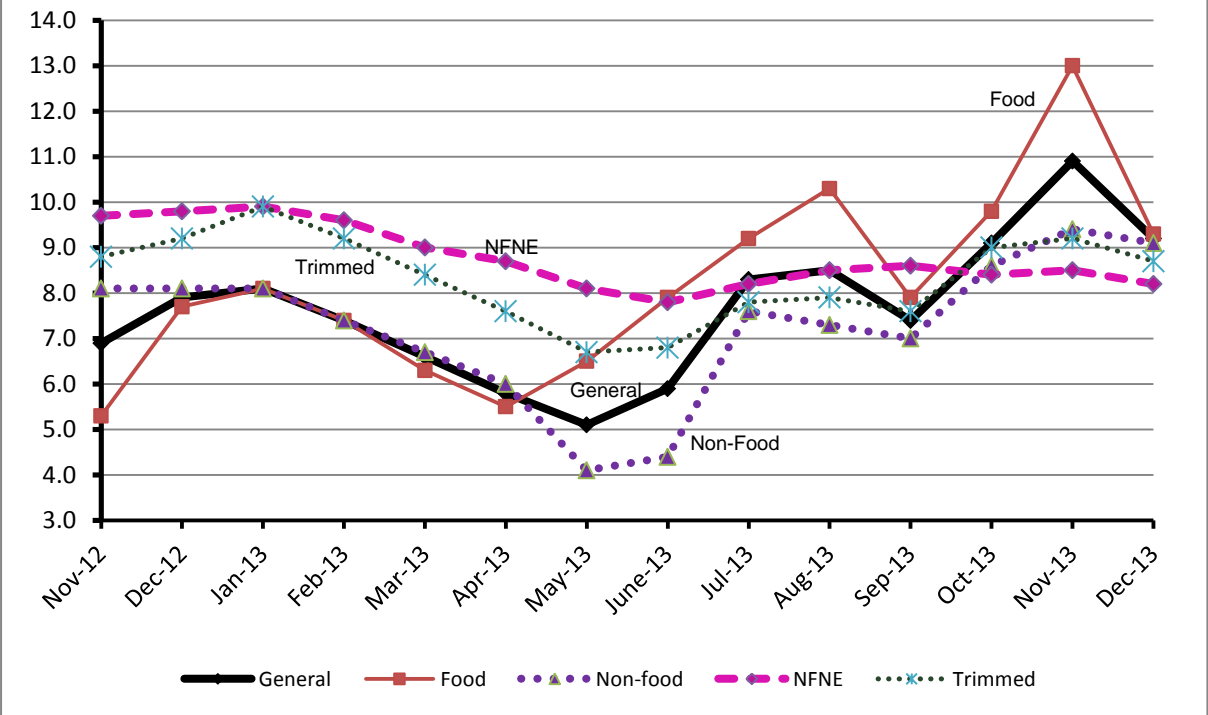
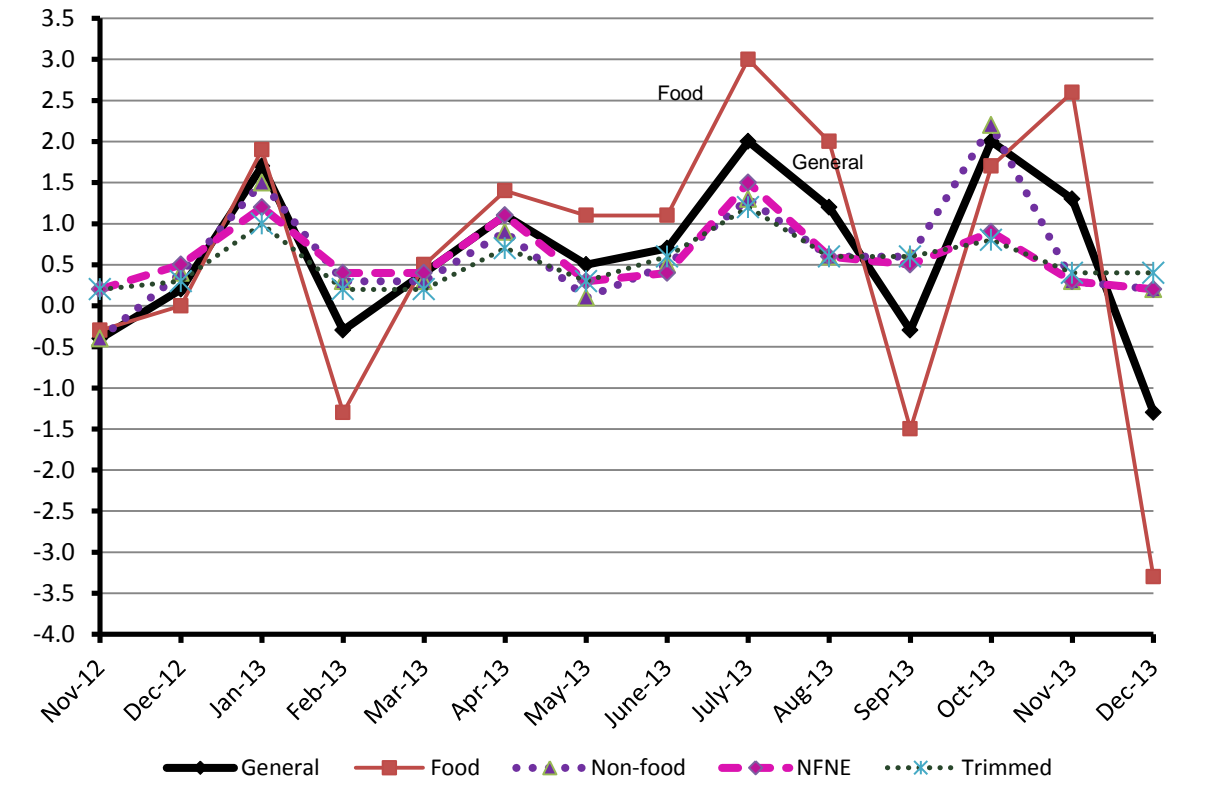


Figure 2: CPI Inflation MoM, Special Indices



II. Consumer Price Index (CPI)

The Consumer Price Index of December, 2013 has decreased by 1.32% over November 2013 and increased by 9.18% over corresponding month of last year.

Table 2 : Consumer Price Index by Group of Commodities and Services (Base 2007-08)

No	Group	Group Weight (%)	Indices			% Change Dec 2013 over		Impact (In % points) Dec 2013 Over	
			Dec 2013	Nov 2013	Dec 2012	Nov 2013	Dec 2012	Nov 2013	Dec 2012
	General	100.00	188.68	191.21	172.82	-1.32	9.18	-1.32	9.18
1.	Food & Non-alcoholic Bev.	34.83	209.87	217.89	192.71	-3.68	8.90	-1.46	3.46
	<i>Non-perishable Food Items</i>	29.84	211.33	209.14	195.52	1.05	8.09	0.34	2.73
	<i>Perishable Food Items</i>	4.99	201.17	270.20	175.89	-25.55	14.37	-1.80	0.73
2.	Alcoholic Bev. & Tobacco	1.41	220.96	218.24	191.04	1.25	15.66	0.02	0.24
3.	Clothing & Footwear	7.57	196.57	196.25	175.58	0.16	11.95	0.01	0.92
4.	Housing, Water, Electricity, Gas & Fuels	29.41	164.44	164.33	150.10	0.07	9.55	0.02	2.44
5.	Furnishing & Household Equipment Maintenance	4.21	195.84	194.17	180.07	0.86	8.76	0.04	0.38
6.	Health	2.19	166.84	165.74	156.75	0.66	6.44	0.01	0.13
7.	Transport	7.20	197.03	197.04	181.04	-0.01	8.83	0.00	0.67
8.	Communication	3.22	129.79	129.71	123.84	0.06	4.80	0.00	0.11
9.	Recreation & Culture	2.02	183.14	182.67	166.68	0.26	9.88	0.00	0.19
10.	Education	3.94	168.34	167.91	154.93	0.26	8.66	0.01	0.31
11.	Restaurants & Hotels	1.23	228.16	225.77	202.44	1.06	12.70	0.02	0.18
12.	Miscellaneous	2.76	210.34	209.60	201.21	0.35	4.54	0.01	0.15

Main contributors to month-on-month and year-on-year percentage changes are given below and detail is given in Annexure A.

1. **Month-on-month** Top few commodities which varied from previous month i.e. November 2013 are given below:-

Food Items Increased: Chicken (13.90%), Eggs (7.22%), Pulse Moong (6.05%), Wheat (5.62%), Wheat Product (4.29%), Pulse Masoor (3.66%), Honey (3.15%), Condiments (2.05%), Wheat Flour (1.85%), Nimco (1.69%), Besan (1.46%), Dry Fruits (1.32%) and Pulse Mash (1.27%).

Decreased: Tomatoes (53.83%), Potatoes (35.94%), Fresh Vegetables (30.59%), Onions (18.07%), Gur (9.95%), Sugar (9.07%), Fresh Fruits (4.24%), Tea (2.17%), Betal Leaves & Nuts (0.18%) and Beverages(0.01%).

Non-food Items Increased: Woolen Readymade Garments (4.18%), Furniture (2.09%), Household Textiles (1.80%), Construction Input Items (1.69%), Firewood (1.58%), Hosiery (1.47%), Medical Tests (1.45%), Newspaper (1.44%) and Woolen Cloth (1.25%).

Decreased: Footwear (3.90%), Personal Equipments (0.51%) and Motor Fuel (0.36%).

2. **Year-on-year:** Top few commodities which varied from previous year i.e. December 2012 are given below:-

Food Items Increased: Onions (78.24%), Potatoes (48.79%), Tomatoes (46.98%), Wheat (30.87%), Wheat Products (27.29%), Wheat Flour (26.92%), Pulse Masoor (18.15%), Pulse Moong (17.07%), Cigarettes (15.84%), Tea (13.40%), Gur (12.94%), Readymade Food (12.70%) and Bakery & Confectionary (12.64%).

Decreased: Pulse Gram (29.24%), Besan (26.55%), Gram Whole (21.22%), Spices (16.08%), Eggs (4.74%), Fresh Fruits (3.27%) and Vegetable Ghee (1.56%).

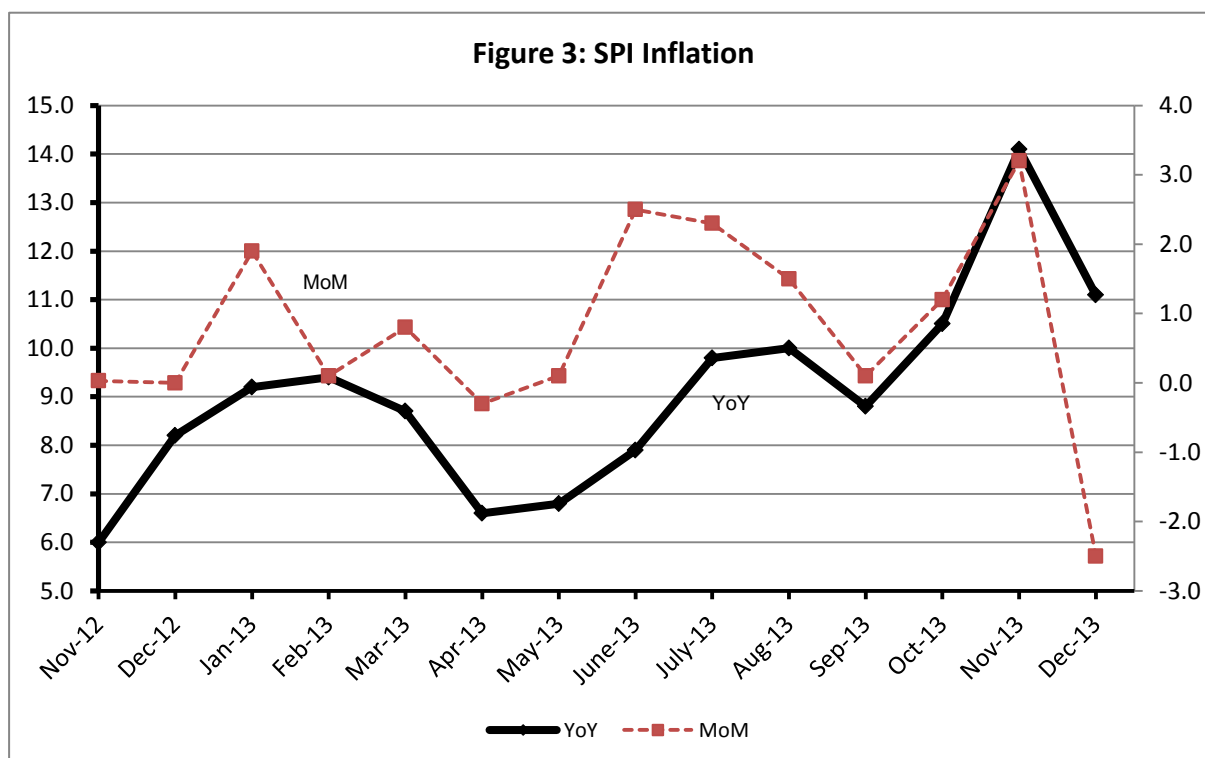
Non-food Items Increased: Postal Services (24.42%), Cosmetics (17.81%), Electricity (15.82%), Text Books (15.60%), Tailoring (14.79%), Sewing Needle & Dry Cell (14.01%), Woolen Readymade Garments (13.11%), Cotton Cloth (13.07%) and Motor Fuel (12.69%).

Decreased: Personal Equipments (2.04%).

III. Sensitive Price Indicator

Quintile-wise percentage changes YoY and MoM are given below in Table 3. The series from November 2012 to December 2013 is also graphed below in Figure 3.

Table 3 : Sensitive Price Indicator (Base 2007-08)					
Quintiles	Indices			% Change Dec 2013 over	
	Dec 2013	Nov 2013	Dec 2012	Nov 2013	Dec 2012
1	202.14	207.40	181.91	-2.54	11.12
2	207.70	212.58	188.29	-2.30	10.31
3	211.31	215.92	187.22	-2.14	12.87
4	213.30	217.42	188.65	-1.89	13.07
5	212.02	215.13	189.42	-1.45	11.93
Combined	210.78	214.76	187.95	-1.85	12.15



IV. Wholesale Price Index

The Wholesale Price Index for December 2013 decreased by 0.99% over November 2013. It is increased by 8.88% over the corresponding month of the last year. YoY and MoM movements, from November 2012 to December 2013 are also graphed below in Figure 4.

Table 4 : Wholesale Price Index by Group of Commodities (Base 2007-08)

No.	Group	Group Weight (%)	Indices			% Change Dec 2013 over		Impact (in %age points) Dec 2013 over	
			Dec 2013	Nov 2013	Dec 2012	Nov 2013	Dec 2012	Nov 2013	Dec 2012
	General	100.00	210.11	212.22	192.98	-0.99	8.88	-0.99	8.88
1.	Agriculture, Forestry & Fishery Products	25.77	212.36	220.76	192.97	-3.81	10.05	-1.02	2.59
2.	Ores & Minerals, Electricity, Gas & Water	12.04	243.89	243.77	208.45	0.05	17.00	0.01	2.21
3.	Food Products, Beverages & Tobacco, Textiles, Apparel & Leather Products	31.11	200.91	201.99	188.44	-0.53	6.62	-0.15	2.01
	i. Food Products, Bev. & Tobacco	20.07	203.49	203.92	191.32	-0.21	6.36	-0.04	1.27
	ii. Textiles and Apparel	10.33	196.00	199.01	187.56	-1.51	4.50	-0.15	0.45
	iii. Leather Products	0.71	199.45	190.96	119.70	4.45	66.62	0.03	0.29
4.	Other Transportable Goods except Metal Products, Machinery & Equipments	22.37	218.30	216.87	204.13	0.66	6.94	0.14	1.64
5.	Metal Products, Machinery & Equipments	8.72	168.65	168.01	159.19	0.38	5.94	0.03	0.43

Main contributors to month-on-month and year-on-year percentage changes are given below and detail is given in Annexure B.

1. **Month-on-month** Top few commodities which varied from previous month i.e. November 2013 are given below:-

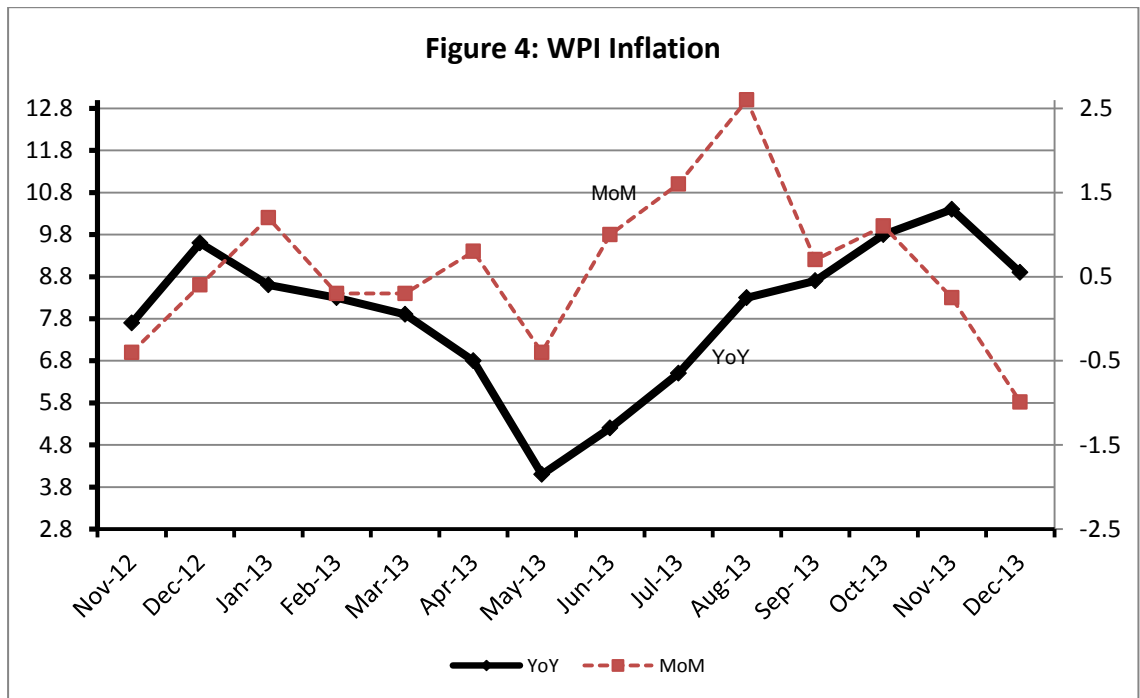
Increased: Lathe Machine (19.35%), Poultry (16.45%), Other Leather NEC (7.76%), Hard Board (6.80%), Eggs (6.63%), Paints & Varnishes (6.44%), Quilt (5.47%), Wheat (5.22%), Stimulants & Spice Crops (5.08%), Pulses (4.55%), Blankets (4.52%), Timber (4.13%), Bed sheets (3.90%), Woolen carpets (3.81%), Unmanufactured Tobacco (3.42%), Leather Without Hair (3.17%), Other Cereal Flour (3.15%), Processed Liquid Milk (2.63%), Wheat Flour (2.53%), Fridge, Washing Machine, Sew Machine, Fans, Iron (2.28%), Insecticides (2.09%), Dry Fruits (2.01%) and Cement (2.00%).

Decreased: Vegetables (40.16%), Potatoes (37.27%), Sugar Refined (11.93%), Fresh Fruits (5.89%), Jowar (5.73%), Footwear (3.78%), Cotton Yarn (2.27%), Bajra (2.01%), Maize (1.68%), Coffee & Tea (1.43%), and Fibre Crops (1.13%).

2. **Year-on-year** Top few commodities which varied from previous year i.e. December, 2012 are given below:-

Increased: Other Leather N.E.C (142.91%), Stimulants and Spice Crops (70.10%), Edible Roots/ Potatoes (68.15%), Lathe Machine (41.39%), Fish (40.15%), Leather without hair (35.78%), Wheat (31.25%) and Wheat Flour (27.55%).

Decreased: Spices (35.54%), Other Cereal Flour (31.96%) and Fresh Fruits (11.95%).



Annexure A: Consumer Price Index Numbers by Commodity Groups & Commodities (2007-2008=100)

Item and Specification	Weight	Index Numbers			% Change in Dec 2013 over			
		Dec 13	Nov 13	Dec 12	Nov 2013	Dec 2012		
General	100.0000	188.68	191.21	172.82	-	1.32	+	9.18
Food & Non-alcoholic Beverage	34.8343	209.87	217.89	192.71	-	3.68	+	8.90
01 Wheat	0.3477	232.97	220.58	178.02	+	5.62	+	30.87
02 Wheat Flour	4.1648	232.04	227.82	182.83	+	1.85	+	26.92
03 Wheat Product	0.0959	219.04	210.03	172.08	+	4.29	+	27.29
04 Besan	0.1500	171.84	169.37	233.96	+	1.46	-	26.55
05 Rice	1.5821	194.51	192.63	173.83	+	0.98	+	11.90
06 Cereals	0.1563	229.43	228.10	204.56	+	0.58	+	12.16
07 Bakery & Confectionary	1.1550	197.89	195.75	175.69	+	1.09	+	12.64
08 Nimco	0.4574	220.68	217.02	197.49	+	1.69	+	11.74
09 Meat	2.4303	229.58	228.77	219.05	+	0.35	+	4.81
10 Chicken	1.3596	185.00	162.43	172.35	+	13.90	+	7.34
11 Fish	0.2970	213.01	210.55	196.55	+	1.17	+	8.37
12 Milk Fresh	6.6800	232.61	231.57	218.75	+	0.45	+	6.34
13 Milk Products	0.6338	227.69	226.42	210.59	+	0.56	+	8.12
14 Milk Powder	0.1129	199.29	198.67	184.69	+	0.31	+	7.91
15 Eggs	0.4555	236.82	220.88	248.60	+	7.22	-	4.74
16 Mustard Oil	0.0952	160.20	158.69	160.99	+	0.95	-	0.49
17 Cooking Oil	1.7538	161.53	161.02	162.59	+	0.32	-	0.65
18 Vegetable Ghee	2.0714	157.90	157.09	160.41	+	0.52	-	1.56
19 Dry Fruits	0.2543	227.99	225.01	209.67	+	1.32	+	8.74
20 Fresh Fruits	1.8649	174.26	181.97	180.16	-	4.24	-	3.27
21 Pulse Masoor	0.2712	167.79	161.86	142.02	+	3.66	+	18.15
22 Pulse Moong	0.2336	252.58	238.17	215.75	+	6.05	+	17.07
23 Pulse Mash (Washed)	0.2098	191.03	188.64	192.21	+	1.27	-	0.61
24 Pulse Gram	0.2361	163.60	162.33	231.20	+	0.78	-	29.24
25 Gram Whole	0.1616	176.98	175.32	224.64	+	0.95	-	21.22
26 Beans	0.0269	237.14	235.84	215.10	+	0.55	+	10.25
27 Potatoes	0.4671	273.22	426.51	183.63	-	35.94	+	48.79
28 Onion	0.5312	296.92	362.39	166.58	-	18.07	+	78.24
29 Tomatoes	0.4391	190.66	412.96	129.72	-	53.83	+	46.98
30 Fresh Vegetables	1.6886	183.57	264.46	183.99	-	30.59	-	0.23
31 Sugar	1.0445	195.97	215.52	192.72	-	9.07	+	1.69
32 Gur	0.0220	251.24	278.99	222.46	-	9.95	+	12.94
33 Honey	0.0446	270.31	262.05	252.31	+	3.15	+	7.13
34 SweetMeat	0.2483	221.74	221.10	206.12	+	0.29	+	7.58
35 Beverages	1.1990	189.72	189.74	168.52	-	0.01	+	12.58
36 Jam, Tomato Ketchup & Pickles	0.2454	190.20	189.16	178.89	+	0.55	+	6.32
37 Condiments	0.2656	226.94	222.38	213.27	+	2.05	+	6.41
38 Spices	0.5441	215.63	214.54	256.95	+	0.51	-	16.08
39 Tea	0.8377	247.54	253.04	218.28	-	2.17	+	13.40
Alcoholic Beverages, Tobacco	1.4135	220.95	218.24	191.04	+	1.24	+	15.66
40 Cigarettes	1.3906	221.44	218.68	191.16	+	1.26	+	15.84
41 Betel Leaves & Nuts	0.0229	191.21	191.56	183.89	-	0.18	+	3.98
Clothing & Footwear	7.5708	196.57	196.25	175.58	+	0.16	+	11.95
42 Cotton Cloth	1.7286	182.80	182.05	161.67	+	0.41	+	13.07
43 Woolen Cloth	0.8759	217.90	215.22	195.87	+	1.25	+	11.25
44 Readymade Garments	0.9739	195.84	194.06	174.96	+	0.92	+	11.93
45 Woolen Readymade Garments	0.3964	208.59	200.23	184.41	+	4.18	+	13.11
46 Hosiery	0.5094	206.31	203.32	185.86	+	1.47	+	11.00
47 Dopatta	0.4412	214.25	212.53	192.59	+	0.81	+	11.25
48 Cleaning and Laundry	0.2110	217.89	216.66	195.35	+	0.57	+	11.54
49 Tailoring	0.8840	237.19	235.52	206.63	+	0.71	+	14.79
50 Footwear	1.5504	162.96	169.58	149.16	-	3.90	+	9.25

Annexure A: Consumer Price Index Numbers by Commodity Groups & Commodities (2007-2008=100)

Item and Specification	Weight	Index Numbers			% Change in Dec 2013 over	
		Dec 13	Nov 13	Dec 12	Nov 2013	Dec 2012
Housing, Water, Elec., Gas, Other	29.4149	164.44	164.33	150.10	+ 0.07	+ 9.55
51 House Rent	21.8149	150.59	150.59	139.61	+ 0.00	+ 7.86
52 Construction Input Items	0.5623	225.47	221.73	203.13	+ 1.69	+ 11.00
53 Construction Wage Rates	0.3331	191.24	191.07	172.69	+ 0.09	+ 10.74
54 Water Supply	0.4971	147.52	147.52	134.90	+ 0.00	+ 9.36
55 Electricity	4.3985	227.44	227.44	196.37	+ 0.00	+ 15.82
56 Gas	1.5756	143.81	143.81	134.34	+ 0.00	+ 7.05
57 Kerosene Oil	0.0057	296.77	296.65	272.53	+ 0.04	+ 8.89
58 Firewood Whole	0.2277	260.84	256.78	236.83	+ 1.58	+ 10.14
Furnished H. Hold Equip. & Hous	4.2082	195.83	194.16	180.08	+ 0.86	+ 8.75
59 Furniture	0.3315	187.36	183.52	169.13	+ 2.09	+ 10.78
60 Household Textiles	0.6489	193.78	190.35	176.21	+ 1.80	+ 9.97
61 Household Equipment	0.5936	166.01	165.35	158.25	+ 0.40	+ 4.90
62 Utensils	0.3212	197.31	195.29	177.63	+ 1.03	+ 11.08
63 Plastic Products	0.2547	190.40	189.62	175.69	+ 0.41	+ 8.37
64 Washing Soaps & Detergents	0.7893	213.77	212.44	195.07	+ 0.63	+ 9.59
65 Sewing Needle & Dr Cell	0.1496	173.11	172.30	151.84	+ 0.47	+ 14.01
66 Household Servant	1.0432	206.44	205.48	191.93	+ 0.47	+ 7.56
67 Marriage Hall Charges	0.0762	207.66	206.52	193.63	+ 0.55	+ 7.25
Health	2.1868	166.83	165.73	156.76	+ 0.66	+ 6.42
68 Drugs & Medicines	1.2667	142.27	142.19	138.76	+ 0.06	+ 2.53
69 Medical Equipments	0.0080	209.70	209.63	198.31	+ 0.03	+ 5.74
70 Doctor (MBBS) Clinic Fee	0.5904	219.23	216.61	194.63	+ 1.21	+ 12.64
71 Medical Tests	0.3217	166.32	163.95	157.07	+ 1.45	+ 5.89
Transport	7.2023	197.03	197.04	181.04	- 0.01	+ 8.83
72 Motor Vehicles	0.6630	161.22	160.81	152.89	+ 0.25	+ 5.45
73 Motor Vehicle Accessories	0.2439	222.12	221.31	209.17	+ 0.37	+ 6.19
74 Motor Fuel	3.0269	194.14	194.85	172.28	- 0.36	+ 12.69
75 Mechanical Service	0.4552	198.85	197.52	184.20	+ 0.67	+ 7.95
76 Motor Vehicle Tax	0.1099	153.74	153.74	152.02	+ 0.00	+ 1.13
77 Transport Services	2.7034	208.24	207.87	195.85	+ 0.18	+ 6.33
Communication	3.2198	129.79	129.71	123.85	+ 0.06	+ 4.80
78 Postal Services	0.0662	215.89	215.89	173.52	+ 0.00	+ 24.42
79 Communication & Apparatus	3.1536	127.98	127.90	122.80	+ 0.06	+ 4.22
Recreation & Culture	2.0227	183.13	182.66	166.69	+ 0.26	+ 9.86
80 Recreation & Culture	0.8634	126.50	126.38	122.16	+ 0.09	+ 3.55
81 Text Books	0.5706	267.10	267.10	231.05	+ 0.00	+ 15.60
82 Newspapers	0.1934	172.95	170.49	155.92	+ 1.44	+ 10.92
83 Stationery	0.3953	190.60	189.69	176.31	+ 0.48	+ 8.11
Education	3.9431	168.34	167.91	154.93	+ 0.26	+ 8.66
84 Education	3.9431	168.34	167.91	154.93	+ 0.26	+ 8.66
Restaurants & Hotels	1.2286	228.16	225.76	202.44	+ 1.06	+ 12.70
85 Readymade Food	1.2286	228.16	225.76	202.44	+ 1.06	+ 12.70
Miscellaneous Goods & Service	2.7550	210.35	209.61	201.20	+ 0.35	+ 4.55
86 Personal Care	1.4935	192.91	191.32	180.05	+ 0.83	+ 7.14
87 Cosmetics	0.3853	176.30	174.38	149.65	+ 1.10	+ 17.81
88 Blades	0.0322	181.71	180.83	173.53	+ 0.49	+ 4.71
89 Personal Equipments	0.8440	257.84	259.16	263.21	- 0.51	- 2.04

Annexure B: Wholesale Price Indices by Major Groups & Commodities

(2007-2008=100)

Item and Specification	Weight	Index Numbers			% Change in Dec 2013 over		
		Dec 13	Nov 13	Dec 12	Nov 2013	Dec 2012	
General	100.0000	210.11	212.22	192.98	-	0.99	+ 8.88
Agriculture Forestry & Fisher	25.7674	212.36	220.76	192.97	-	3.81	+ 10.05
001 Wheat	0.6297	244.00	231.90	185.88	+	5.22	+ 31.27
002 Maize	0.6764	175.94	178.94	165.11	-	1.68	+ 6.56
003 Rice	2.4413	176.55	176.47	163.76	+	0.05	+ 7.81
004 Sorghum / Jowar	0.0214	248.44	263.55	198.10	-	5.73	+ 25.41
005 Millet / Bajra	0.0374	175.79	179.40	157.83	-	2.01	+ 11.38
006 Vegetables	1.2441	220.02	367.68	185.19	-	40.16	+ 18.81
007 Fresh Fruits	1.5144	183.06	194.51	207.91	-	5.89	- 11.95
008 Dry Fruits	0.2478	201.08	197.11	179.38	+	2.01	+ 12.10
009 Cotton Seeds	1.1511	168.48	168.77	166.78	-	0.17	+ 1.02
010 Other Oil Seeds	0.0722	182.45	178.95	186.07	+	1.96	- 1.95
011 Edible Roots / Potatoes	0.2540	296.10	472.04	176.09	-	37.27	+ 68.15
012 Stimulant & Spice Crops	0.1634	289.64	275.65	170.28	+	5.08	+ 70.10
013 Pulses	0.4901	186.65	178.53	207.89	+	4.55	- 10.22
014 Sugar Crops	1.0725	267.92	267.92	267.92	+	0.00	+ 0.00
015 Fibre Crops	5.3169	210.20	212.61	179.31	-	1.13	+ 17.23
016 Unmanufactured Tobacco	0.0742	187.30	181.11	169.08	+	3.42	+ 10.78
017 Poultry	0.5633	185.85	159.59	175.34	+	16.45	+ 5.99
018 Raw Milk from Bovine Animals	7.0279	224.04	223.35	213.76	+	0.31	+ 4.81
019 Eggs	0.5034	245.62	230.34	250.45	+	6.63	- 1.93
020 Raw Animal Materials / Wool	0.0351	153.55	153.55	137.58	+	0.00	+ 11.61
021 Hides & Fur Skins, Raw	0.4834	147.61	145.71	138.82	+	1.30	+ 6.33
022 Fuel Wood in Logs	0.0179	238.23	236.04	216.60	+	0.93	+ 9.99
023 Fish Live Fresh or Chilled	1.7295	249.61	249.22	178.10	+	0.16	+ 40.15
Ores/Minerals, Elec., Gas & W	12.0389	243.89	243.77	208.45	+	0.05	+ 17.00
024 Coal not Agglomerated	0.7508	223.53	223.53	196.08	+	0.00	+ 14.00
025 Natural Gas Liquified	5.7385	205.11	204.91	193.63	+	0.10	+ 5.93
026 Salt & Pure Sodium Chloride	0.0584	220.90	217.04	164.54	+	1.78	+ 34.25
027 Electrical Energy	5.4912	287.44	287.44	226.10	+	0.00	+ 27.13
Food, Beverages, Tobacco, Textil	31.1122	200.91	201.99	188.44	-	0.53	+ 6.62
Food Products, Beverages &	20.0718	203.49	203.92	191.32	-	0.21	+ 6.36
028 Meat of Animals	3.4559	239.95	239.95	228.57	+	0.00	+ 4.98
029 Vegetables & Fruit Juice	0.0058	193.79	192.59	188.52	+	0.62	+ 2.80
030 Dried Fruits & Nuts	0.1733	223.51	224.54	224.06	-	0.46	- 0.25
031 Fruit Juices	0.3880	166.02	165.29	157.91	+	0.44	+ 5.14
032 Vegetable Oils Refined	1.9242	161.60	160.83	156.05	+	0.48	+ 3.56
033 Vegetable Ghee	1.5632	142.45	141.61	139.95	+	0.59	+ 1.79
034 Oil Cakes	0.9611	183.79	181.80	172.67	+	1.09	+ 6.44
035 Processed Liquid Milk	4.4437	210.94	205.54	208.43	+	2.63	+ 1.20
036 Milk & Cream in Solid Form	0.0316	193.72	190.96	171.59	+	1.45	+ 12.90
037 Ice Cream	0.0047	209.79	209.79	167.68	+	0.00	+ 25.11
038 Dairy Products N.E.C	0.0117	217.26	217.26	204.91	+	0.00	+ 6.03
039 Wheat Flour	2.3034	214.45	209.15	168.13	+	2.53	+ 27.55
040 Other Cereal Flour	0.0604	136.20	132.04	200.17	+	3.15	- 31.96
041 Sugar Refined	1.7975	202.31	229.71	199.74	-	11.93	+ 1.29
042 Chocolate	0.0139	99.19	99.19	99.19	+	0.00	+ 0.00
043 Sugar Confectionary	0.0738	102.28	102.28	100.40	+	0.00	+ 1.87
044 Coffee & Tea	0.7303	226.18	229.47	199.81	-	1.43	+ 13.20
045 Spices	0.1449	194.39	194.28	301.56	+	0.06	- 35.54
046 Other Food Products	0.0336	308.23	308.23	319.27	+	0.00	- 3.46
047 Mineral Water	0.0207	181.84	181.84	168.32	+	0.00	+ 8.03
048 Beverages	0.6303	152.77	150.11	137.86	+	1.77	+ 10.82
049 Tobacco Products	1.2998	242.41	242.41	208.80	+	0.00	+ 16.10
Textiles & Apparels	10.3289	196.00	199.01	187.56	-	1.51	+ 4.50
050 Cotton Yarn	5.2491	215.52	221.66	211.22	-	2.77	+ 2.04
051 Nylon Yarn	0.1719	181.73	181.73	178.80	+	0.00	+ 1.64
052 Blended Yarn	0.1689	201.89	201.89	192.45	+	0.00	+ 4.91
053 Woven Fabrics	0.0128	226.82	224.64	206.00	+	0.97	+ 10.11
054 Cotton Fabrics	0.6343	187.77	187.77	174.17	+	0.00	+ 7.81
055 Other Fabrics	1.1016	179.06	179.06	165.62	+	0.00	+ 8.11
056 Silk & Reyon Fabrics	0.7350	161.09	161.09	154.21	+	0.00	+ 4.46
057 Towels	0.1235	234.25	233.85	203.06	+	0.17	+ 15.36

Annexure B: Wholesale Price Indices by Major Groups & Commodities

(2007-2008=100)

Item and Specification	Weight	Index Numbers			% Change in Dec 2013 over		
		Dec 13	Nov 13	Dec 12	Nov 2013	Dec 2012	
058 Blankets	0.0029	204.97	196.10	184.97	+	4.52	+ 10.81
059 Bed Sheets	0.0913	236.05	227.19	197.94	+	3.90	+ 19.25
060 Quilts	0.0019	169.53	160.74	151.68	+	5.47	+ 11.77
061 Woolen Carpets	0.0383	113.69	109.52	106.55	+	3.81	+ 6.70
062 Synthetic Carpets	0.0566	116.10	115.69	114.41	+	0.35	+ 1.48
063 Hosiery Products	0.8832	187.81	187.81	178.65	+	0.00	+ 5.13
064 Readymade Garments	1.0576	153.12	153.12	136.27	+	0.00	+ 12.37
Leather Products	0.7115	199.44	190.96	119.70	+	4.44	+ 66.62
065 Leather Without Hair	0.2973	149.13	144.55	109.83	+	3.17	+ 35.78
066 Other Leather N.E.C	0.2567	297.73	276.28	122.57	+	7.76	+ <u>142.9</u>
067 Footwears	0.1575	134.22	139.49	133.63	-	3.78	+ 0.44
Other Transportable Goods	22.3659	218.30	216.87	204.13	+	0.66	+ 6.94
068 Timber	0.0165	173.24	166.37	148.36	+	4.13	+ 16.77
069 Printing Paper	0.4279	169.75	167.02	155.35	+	1.63	+ 9.27
070 Hard Board	0.1579	229.17	214.58	194.44	+	6.80	+ 17.86
071 Coke	0.2797	163.45	163.45	163.45	+	0.00	+ 0.00
072 Motor Spirit	1.5336	190.50	190.50	171.33	+	0.00	+ 11.19
073 Diesel Oil	5.2664	279.46	279.46	261.87	+	0.00	+ 6.72
074 Kerosine Oil	0.2151	288.01	288.01	263.47	+	0.00	+ 9.31
075 Furnace Oil	3.2664	184.93	184.52	168.81	+	0.22	+ 9.55
076 Mobil Oil	0.7114	193.09	193.09	184.45	+	0.00	+ 4.68
077 Chemicals	1.7720	172.77	169.65	156.65	+	1.84	+ 10.29
078 Dyeing Material	0.1539	107.55	106.46	104.26	+	1.02	+ 3.16
079 Fertilizers	2.8657	266.56	263.88	261.25	+	1.02	+ 2.03
080 Pesticides	0.2763	225.48	224.99	197.49	+	0.22	+ 14.17
081 Insecticides	0.1276	133.78	131.04	117.42	+	2.09	+ 13.93
082 Paints & Varnishes	0.1916	265.56	249.49	237.48	+	6.44	+ 11.82
083 Medicines	1.1428	138.77	138.77	139.54	+	0.00	- 0.55
084 Soaps & Detergents	0.8168	181.19	178.85	168.41	+	1.31	+ 7.59
085 Auto Tyres	0.2703	185.73	185.73	180.84	+	0.00	+ 2.70
086 Plastic Products	0.4550	201.76	200.86	191.35	+	0.45	+ 5.44
087 Glass sheets	0.2089	207.75	206.90	190.93	+	0.41	+ 8.81
088 Other Glass Articles	0.1635	214.09	213.87	191.72	+	0.10	+ 11.67
089 Ceramics & Sanitary Fixture	0.0244	171.05	171.02	157.32	+	0.02	+ 8.73
090 Bricks, Blocks & Tiles	0.1566	196.76	194.89	173.20	+	0.96	+ 13.60
091 Cement	1.8145	204.86	200.84	187.19	+	2.00	+ 9.44
092 Bed Foam	0.0006	149.67	149.33	141.17	+	0.23	+ 6.02
093 Matches	0.0505	143.20	143.20	133.50	+	0.00	+ 7.27
Metal Product, Machinery & Eq	8.7156	168.65	168.01	159.19	+	0.38	+ 5.94
094 Pig Iron	0.0593	128.97	128.97	128.97	+	0.00	+ 0.00
095 Steel Bar & Sheets	1.4022	140.33	140.55	133.53	-	0.16	+ 5.09
096 Pipe Fittings	0.0780	168.00	166.34	141.47	+	1.00	+ 18.75
097 Steel Products	0.3879	170.12	170.08	161.94	+	0.02	+ 5.05
098 Engines & Motors	0.0046	109.07	109.07	109.07	+	0.00	+ 0.00
099 Vacuum Pumps	0.0155	115.39	115.39	115.39	+	0.00	+ 0.00
100 Air Conditioners	0.0049	181.12	181.12	172.67	+	0.00	+ 4.89
101 Cultivators	0.0551	226.90	226.90	189.23	+	0.00	+ 19.91
102 Chuff Cutter	0.1293	144.94	144.94	138.54	+	0.00	+ 4.62
103 Tractors	0.0028	193.29	193.29	161.96	+	0.00	+ 19.34
104 Lathe Machines	0.0525	208.81	174.96	147.68	+	19.35	+ 41.39
105 Concrete Mixture	0.0107	138.83	138.83	138.83	+	0.00	+ 0.00
106 Fridge, WashM, SewM, Fans, Iron	1.1645	191.24	186.98	166.45	+	2.28	+ 14.89
107 Electric Wires	0.0912	169.55	169.09	159.57	+	0.27	+ 6.25
108 Lighting Equipments	1.4431	162.71	163.43	148.22	-	0.44	+ 9.78
109 Radio & Television	0.1843	126.49	126.49	126.46	+	0.00	+ 0.02
110 Motor Vehicles	0.0244	181.93	181.77	171.79	+	0.09	+ 5.90
111 Motorcycles	0.2570	125.41	125.41	125.19	+	0.00	+ 0.18
112 Bicycles	3.3483	180.99	180.99	177.87	+	0.00	+ 1.75