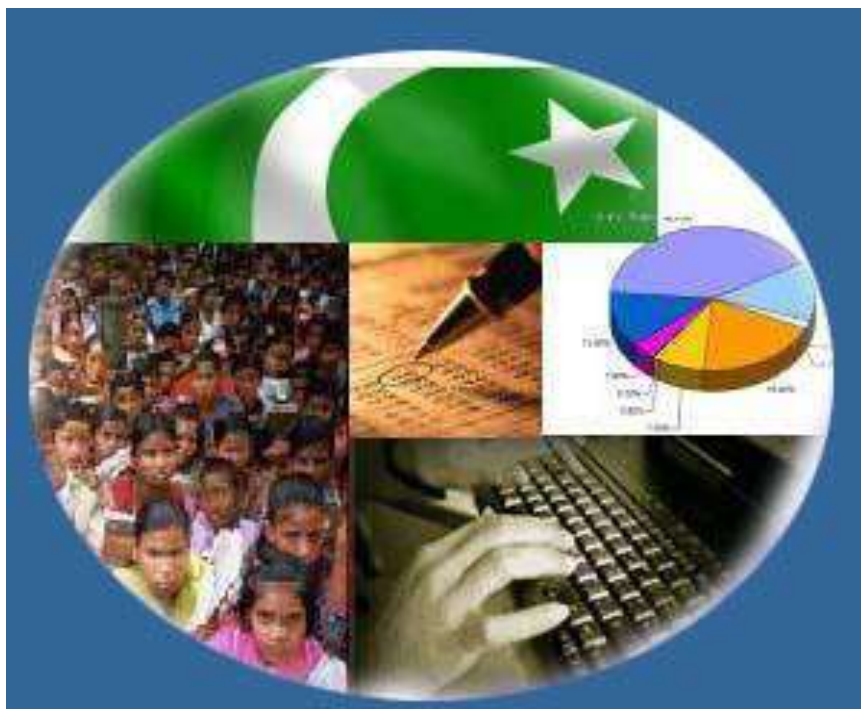




Monthly Review on Price Indices



August, 2014
(Base 2007-08)

Government of Pakistan
Statistics Division
Pakistan Bureau of Statistics
Islamabad

I. Inflation in Brief

1. CPI inflation, General, increased by 7.0% on year-on-year basis in August 2014 as compared to 7.9% in the previous month and by 8.5% in August 2013. On month-on-month basis, it increased by 0.3% in August 2014 as compared to 1.7% in the previous month and by 1.2% in August 2013.
2. Core inflation measured by non-food non-energy CPI (Core NFNE) increased by 7.9% on (YoY) basis in August 2014 as compared to 8.3% in the previous month and by 8.5% in August 2013. On (MoM) basis, it increased by 0.2% in August 2014 as compared to 1.1% in the previous month and by 0.6% in August 2013.
3. Core inflation, measured by 20% weighted trimmed mean CPI (Core Trimmed) increased by 7.1% on (YoY) basis in August 2014 as compared to 7.6% in the previous month and by 7.9% in August 2013. On (MoM) basis, it increased by 0.2% in August 2014 as compared to 0.8% in the previous month and by 0.6% in August 2013.
4. SPI inflation on YoY basis increased by 5.2% in August 2014 as compared to 5.9% a month earlier and 10.1% in August 2013. On MoM basis, it increased by 0.8% in August 2014 as compared to 2.0% a month earlier and increased by 1.5% in August 2013.
5. WPI inflation on YoY basis increased by 3.3% in August 2014 as compared to 6.6% a month earlier and 8.3% in August 2013. WPI inflation on MoM basis decreased by 0.5% in August 2014 as compared to an increase of 0.5% a month earlier and increased by 2.6% in August 2013.
6. Figures 1 and 2 show graphically the data of Table 1. Table 1.1 shows "Period Average" and "YoY" percent changes in indices of three years.

Table 1: Inflation (%) (Base 2007-08)														
Period	CPI						Core Inflation				SPI**		WPI	
	General		Food		Non-food		NFNE*		Trimmed		YoY	MoM	YoY	MoM
	YoY	MoM	YoY	MoM	YoY	MoM	YoY	MoM	YoY	MoM				
Jul 13	8.3	2.0	9.2	3.0	7.6	1.3	8.2	1.5	7.8	1.2	9.8	2.3	6.5	1.6
Aug 13	8.5	1.2	10.3	2.0	7.3	0.6	8.5	0.6	7.9	0.6	10.1	1.5	8.3	2.6
Sep 13	7.4	-0.3	7.9	-1.5	7.0	0.6	8.6	0.5	7.6	0.6	8.8	0.1	8.7	0.7
Oct 13	9.1	2.0	9.8	1.7	8.6	2.2	8.4	0.9	9.0	0.8	10.5	1.2	9.8	1.1
Nov 13	10.9	1.3	13.0	2.6	9.4	0.3	8.5	0.3	9.2	0.4	14.1	3.2	10.4	0.2
Dec 13	9.2	-1.3	9.3	-3.3	9.1	0.2	8.2	0.2	8.7	0.4	11.1	-2.5	8.9	-1.0
Jan 14	7.9	0.5	7.2	0.0 ¹	8.4	0.9	8.0	1.0	8.2	0.6	7.7	-1.2	8.1	0.5
Feb 14	7.9	-0.3	7.6	-1.0	8.2	0.2	7.8	0.2	8.1	0.2	7.5	-0.1	7.6	-0.1
Mar 14	8.5	1.0	9.3	2.1	8.0	0.2	7.6	0.3	8.1	0.3	9.0	2.1	7.7	0.3
Apr 14	9.2	1.7	9.9	2.0	8.7	1.5	8.5	1.9	9.0	0.9	9.4	0.1	7.0	0.1
May 14	8.3	-0.3	7.4	-1.2	9.0	0.4	8.7	0.5	8.3	0.3	7.7	-1.5	7.3	-0.1
Jun14	8.2	0.6	7.4	1.0	8.9	0.3	8.7	0.4	7.9	0.3	6.2	1.1	7.7	1.4
Jul 14	7.9	1.7	7.0	2.7	8.5	1.0	8.3	1.1	7.6	0.8	5.9	2.0	6.6	0.5
Aug14	7.0	0.3	5.6	0.6	8.1	0.2	7.9	0.2	7.1	0.2	5.2	0.8	3.3	-0.5

*NFNE is non-food non-energy,

** SPI for quintile 1

¹ Actual figure is -0.04, displayed in rounded figure

Table 1.1 : Period Average and YoY % Changes of Indices (Base 2007-08)						
Index	Averages July-August % Changes			August over August % Changes		
	2014-15	2013-14	2012-13	2014-15	2013-14	2012-13
CPI	7.44	8.41	9.32	6.99	8.55	9.05
SPI	5.53	9.93	7.92	5.18	10.06	8.16
WPI	4.91	7.41	7.47	3.31	8.26	7.71

Figure 1: CPI Inflation YoY, Special Indices

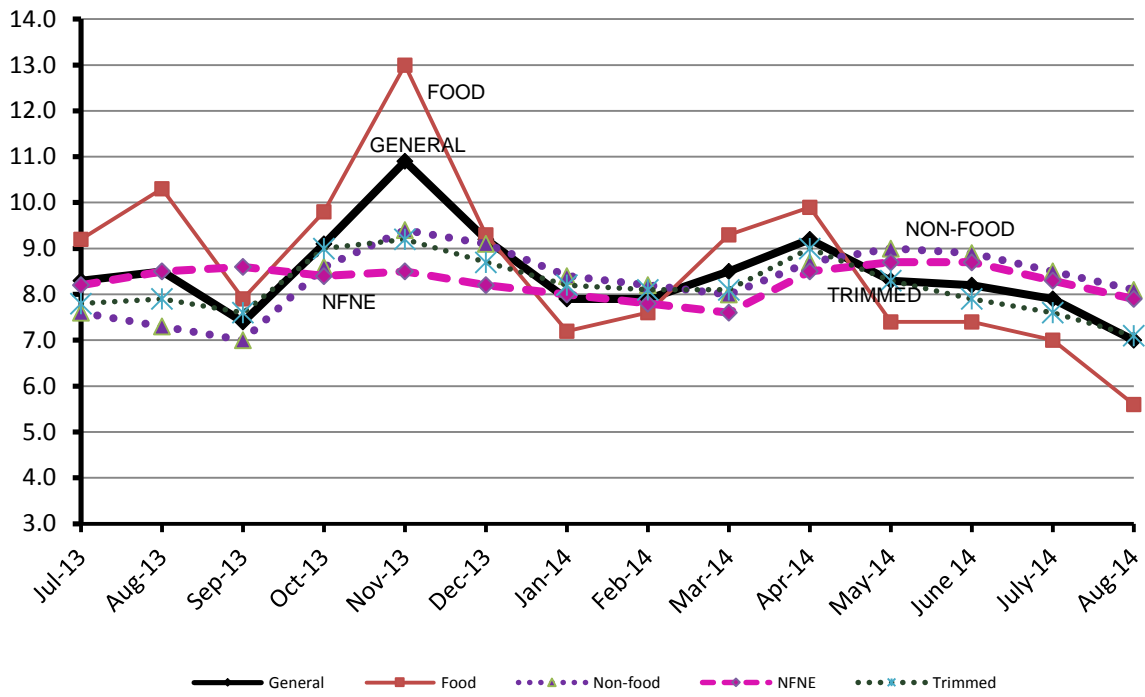
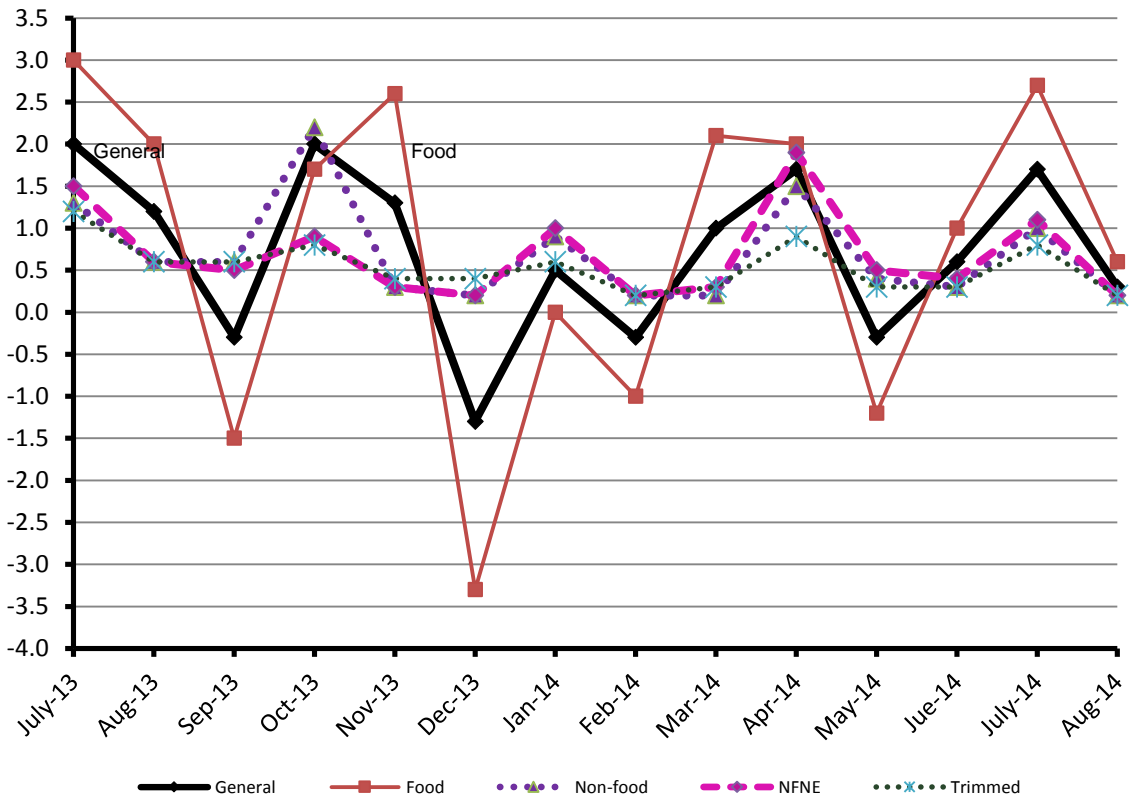


Figure 2: CPI Inflation MoM, Special Indices



II. Consumer Price Index (CPI)

The Consumer Price Index of August, 2014 has increased by 0.33% over July, 2014 and increased by 6.99% over corresponding month of the last year, i.e. August 2013.

Table 2 : Consumer Price Index by Group of Commodities and Services (Base 2007-08)

No	Group	Group Weight (%)	Indices			% Change Aug 2014 Over		Impact (In % points) Aug 2014 Over	
			Aug 2014	Jul 2014	Aug 2013	Jul 2014	Aug 2013	Jul 2014	Aug 2013
	General	100.00	198.70	198.05	185.71	0.33	6.99	0.33	6.99
1.	Food & Non-alcoholic Bev.	34.83	221.77	220.48	211.91	0.59	4.65	0.23	1.85
	<i>Non-perishable Food Items</i>	29.84	215.89	213.61	206.90	1.07	4.35	0.34	1.45
	<i>Perishable Food Items</i>	4.99	256.91	261.59	241.86	-1.79	6.22	-0.12	0.40
2.	Alcoholic Bev.& Tobacco	1.41	266.59	265.82	217.51	0.29	22.56	0.01	0.37
3.	Clothing & Footwear	7.57	210.19	209.51	192.38	0.32	9.26	0.03	0.73
4.	Housing, Water, Electricity, Gas & Fuels	29.41	171.65	171.62	157.59	0.02	8.92	0.01	2.23
5.	Furnishing & Household Equipment Maintenance	4.21	205.48	204.42	188.99	0.52	8.73	0.02	0.37
6.	Health	2.19	173.42	173.40	162.32	0.01	6.84	0.00	0.13
7.	Transport	7.20	198.70	198.38	190.63	0.16	4.23	0.00	0.31
8.	Communication	3.22	129.83	129.85	129.65	-0.02	0.14	0.00	0.00
9.	Recreation & Culture	2.02	189.02	188.76	181.28	0.14	4.27	0.00	0.08
10.	Education	3.94	191.45	191.33	166.03	0.06	15.31	0.00	0.54
11.	Restaurants & Hotels	1.23	239.85	239.23	216.32	0.26	10.88	0.00	0.16
12.	Miscellaneous	2.76	218.63	216.98	204.07	0.76	7.13	0.02	0.22

Main contributors to month-on-month and year-on-year percentage changes are given below and detail is given in Annexure A.

1. **Month-on-month** Top few commodities which varied from previous month i.e. July 2014 are given below:-

Food Items Increased: Eggs (19.48%), Fresh Vegetables (12.55%), Onions (8.93%), Pulse Mash (4.40%), Wheat Flour (3.51%), Potatoes (3.13%), Wheat (2.88%), Sugar (2.02%), Honey (1.41%), Chicken (1.19%), Gur (1.15%), Tomatoes (1.13%), Meat (1.03%), and Wheat Product (1.02%).

Decreased: Fresh Fruits (17.54%), Pulse Moong (4.70%), and Fish (2.24%).

Non-food Items Increased: Motor Vehicles (1.94%), Personal Care (1.08%), and Household Servant (1.06%).

2. **Year-on-year:** Top few commodities which varied from previous year i.e. August 2013 are given below:-

Food Items Increased: Potatoes (113.80%), Cigarettes (22.78%), Pulse Moong (21.55%), Eggs (19.37%), Pulse Mash (16.61%), and Milk Powder (16.52%).

Decreased: Tomatoes (40.67%), Onions (25.21%), Tea (18.23%), and Chicken (11.45%).

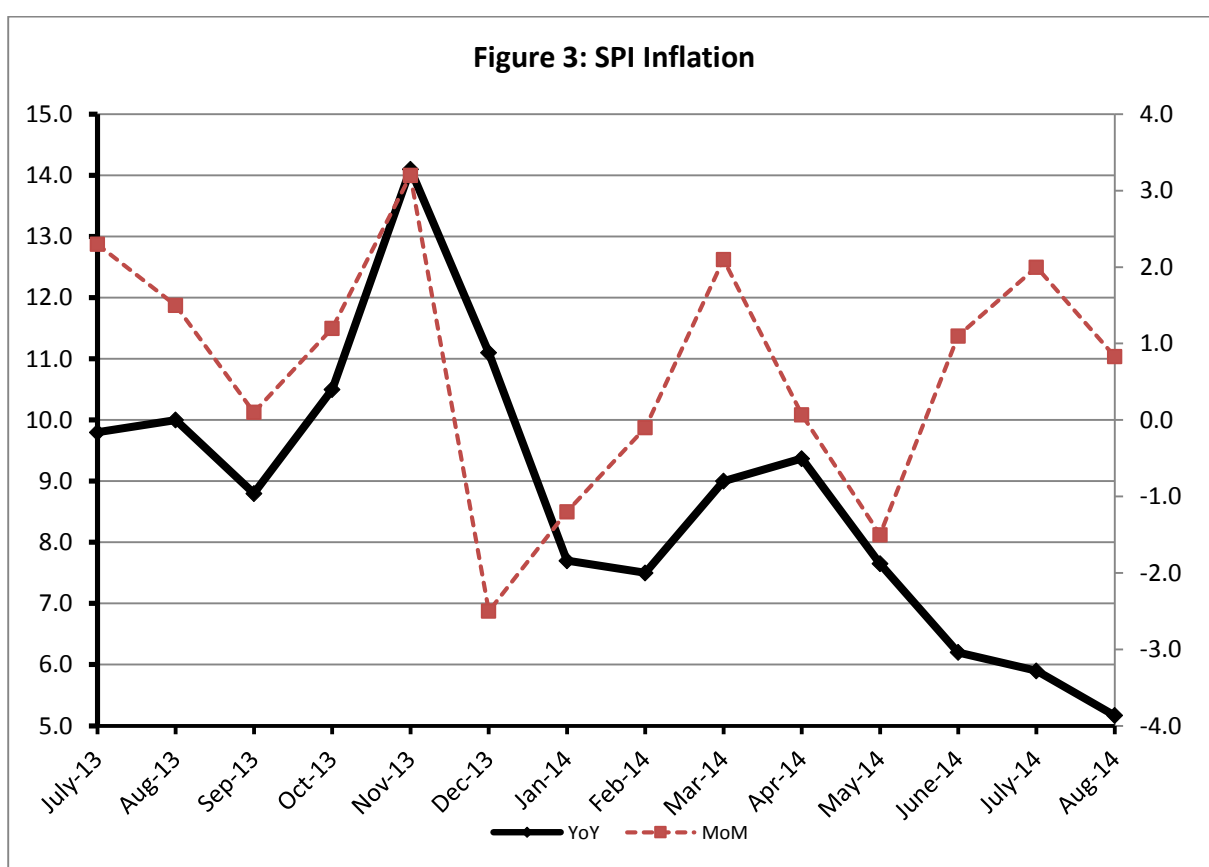
Non-food Items Increased: Motor Vehicle Tax (36.71%), Electricity (15.82%), Education (15.31%), and Cotton Cloth (15.16%).

III. Sensitive Price Indicator

Quintile-wise percentage changes YoY and MoM are given below in Table 3. The series from July 2013 to August 2014 is also graphed below in Figure 3.

Table 3 : Sensitive Price Indicator (Base 2007-08)

Quintiles	Indices			% Change August 2014 over	
	August 2014	July 2014	August 2013	July 2014	August 2013
1	208.76	207.04	198.48	0.83	5.18
2	214.85	213.40	204.55	0.68	5.04
3	217.62	216.40	203.12	0.56	7.14
4	219.57	218.64	204.34	0.43	7.45
5	218.08	217.57	203.86	0.23	6.98
Combined	217.08	216.14	203.29	0.43	6.78



IV. Wholesale Price Index

The Wholesale Price Index for August 2014 is decreased by 0.48% over July 2014. It is increased by 3.31% over the corresponding month of the last year. YoY and MoM movements, from July 2013 to August 2014 are also graphed below in Figure 4.

Table 4 : Wholesale Price Index by Group of Commodities (Base 2007-08)									
No.	Group	Group Weight (%)	Indices			% Change Aug 2014 over		Impact (in %age points) Aug 2014 over	
			Aug 2014	Jul 2014	Aug 2013	Jul 2014	Aug 2013	Jul 2014	Aug 2013
	General	100.00	214.73	215.76	207.85	-0.48	3.31	-0.48	3.31
1.	Agriculture, Forestry & Fishery Products	25.77	224.73	230.64	218.23	-2.56	2.98	-0.71	0.81
2.	Ores & Minerals, Electricity, Gas & Water	12.04	242.91	242.67	239.51	0.10	1.42	0.01	0.20
3.	Food Products, Beverages & Tobacco, Textiles, Apparel & Leather Products	31.11	207.15	205.50	197.43	0.80	4.92	0.24	1.46
	i. Food Products, Bev. & Tobacco	20.07	213.92	210.83	199.00	1.47	7.50	0.29	1.44
	ii. Textiles and Apparel	10.33	194.26	194.63	195.98	-0.19	-0.88	-0.02	-0.09
	iii. Leather Products	0.71	203.42	213.11	173.96	-4.54	16.93	-0.03	0.10
4.	Other Transportable Goods except Metal Products, Machinery & Equipment	22.37	215.17	215.63	209.59	-0.21	2.66	-0.05	0.60
5.	Metal Products, Machinery & Equipment	8.72	172.17	171.57	166.14	0.35	3.63	0.02	0.25

Main contributors to month-on-month and year-on-year percentage changes are given below and detail is given in Annexure B.

1. **Month-on-month** Top few commodities which varied from previous month i.e. July, 2014 are given below:-

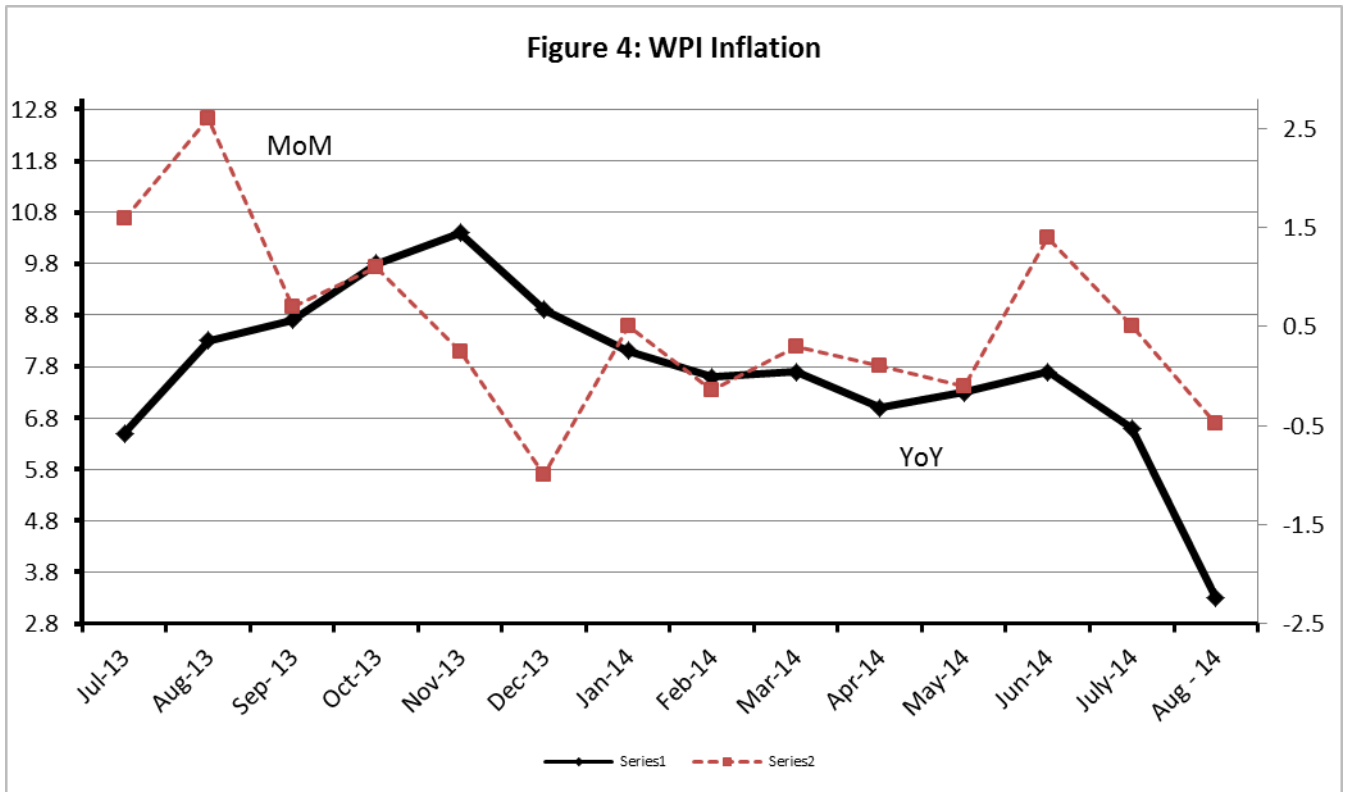
Increased: Eggs (24.34%), Vegetables (22.94%), Synthetic Carpets (8.03%), Air Conditioners (7.96%), Silk & Reyon Fabrics (5.73%), Processed Liquid Milk (3.95%), Wheat Flour (3.33%), Wheat (3.08%), Poultry (2.78%), Other Fabrics (2.76%), Meat (2.70%), Steel Bar & Sheets (2.51%) and Salt (2.19%).

Decreased: Fresh Fruits (20.11%), Fibre Crops (13.03%), Oil Cakes (8.23%), Stimulants & Spice Crops (6.74%), Cotton Seeds (6.51%) Soap & Detergents (3.99%), Leather Without Hair (3.16%), Cotton Yarn (2.35%) and Pulses (2.30%).

2. **Year-on-year** Top few commodities which varied from previous year i.e. August, 2013 are given below:-

Increased: Potatoes (152.78%), Stimulants and Spice Crops (77.80%), Leather without hair (58.89%), Insecticides (45.50%), Lathe Machine (41.39%), Dyeing Material (34.08%), Tractors (32.46%) and Cotton Seeds (31.11%).

Decreased: Coffee & Tea (21.40%), Fibre Crops (18.25%) and Nylon Yarn (12.77%)



Annexure A: Consumer Price Index Numbers by Commodity Groups & Commodities (2007-08=100)

Item and Specification	Weight	Index Numbers			% Change in Aug 2014 over	
		Aug 14	Jul 14	Aug 13	Jul 2014	Aug 2013
General	100.0000	198.70	198.05	185.71	+ 0.33	+ 6.99
Food and non-alcoholic Bevera	34.8343	221.77	220.48	211.91	+ 0.59	+ 4.65
01 Wheat	0.3477	208.97	203.12	204.43	+ 2.88	+ 2.22
02 Wheat Flour	4.1648	222.00	214.47	213.76	+ 3.51	+ 3.85
03 Wheat Product	0.0959	218.37	216.16	196.14	+ 1.02	+ 11.33
04 Besan	0.1500	169.93	171.35	174.75	- 0.83	- 2.76
05 Rice	1.5821	195.30	194.78	190.71	+ 0.27	+ 2.41
06 Cereals	0.1563	237.79	237.23	223.43	+ 0.24	+ 6.43
07 Bakery & Confectionary	1.1550	205.44	204.30	186.63	+ 0.56	+ 10.08
08 Nimco	0.4574	234.50	232.48	210.08	+ 0.87	+ 11.62
09 Meat	2.4303	241.09	238.64	225.95	+ 1.03	+ 6.70
10 Chicken	1.3596	202.16	199.78	228.30	+ 1.19	- 11.45
11 Fish	0.2970	216.83	221.80	202.20	- 2.24	+ 7.24
12 Milk Fresh	6.6800	244.41	244.00	229.63	+ 0.17	+ 6.44
13 Milk Products	0.6338	240.29	240.15	223.35	+ 0.06	+ 7.58
14 Milk Powder	0.1129	224.27	223.66	192.47	+ 0.27	+ 16.52
15 Eggs	0.4555	211.80	177.27	177.43	+ 19.48	+ 19.37
16 Mustard Oil	0.0952	159.06	158.40	157.73	+ 0.42	+ 0.84
17 Cooking Oil	1.7538	161.90	161.87	160.17	+ 0.02	+ 1.08
18 Vegetable Ghee	2.0714	157.85	157.83	155.90	+ 0.01	+ 1.25
19 Dry Fruits	0.2543	236.61	237.98	218.07	- 0.58	+ 8.50
20 Fresh Fruits	1.8649	225.59	273.57	228.27	- 17.54	- 1.17
21 Pulse Masoor	0.2712	180.35	180.20	156.96	+ 0.08	+ 14.90
22 Pulse Moong	0.2336	287.40	301.58	236.45	- 4.70	+ 21.55
23 Pulse Mash (Washed)	0.2098	218.09	208.89	187.03	+ 4.40	+ 16.61
24 Pulse Gram	0.2361	167.40	166.99	170.97	+ 0.25	- 2.09
25 Gram Whole	0.1616	179.10	179.25	180.87	- 0.08	- 0.98
26 Beans	0.0269	241.77	240.10	232.00	+ 0.70	+ 4.21
27 Potatoes	0.4699	484.66	469.93	226.71	+ 3.13	+ 113.78
28 Onion	0.5340	251.11	230.52	335.76	+ 8.93	- 25.21
29 Tomatoes	0.4419	169.12	167.23	285.06	+ 1.13	- 40.67
30 Fresh Vegetables	1.6802	252.93	224.72	219.98	+ 12.55	+ 14.98
31 Sugar	1.0445	205.35	201.28	195.15	+ 2.02	+ 5.23
32 Gur	0.0220	259.98	257.03	271.23	+ 1.15	- 4.15
33 Honey	0.0446	292.72	288.66	256.90	+ 1.41	+ 13.94
34 SweetMeat	0.2483	229.38	227.84	214.63	+ 0.68	+ 6.87
35 Beverages	1.1990	209.18	208.53	189.21	+ 0.31	+ 10.55
36 Jam, Tomato Ketchup & Pickles	0.2454	197.56	196.07	187.53	+ 0.76	+ 5.35
37 Condiments	0.2656	249.01	247.60	217.77	+ 0.57	+ 14.35
38 Spices	0.5441	229.07	228.43	216.40	+ 0.28	+ 5.85
39 Tea	0.8377	206.89	207.09	253.02	- 0.10	- 18.23
Alcoholic Beverages, Tobacco	1.4135	266.59	265.82	217.51	+ 0.29	+ 22.56
40 Cigarettes	1.3906	267.63	266.88	217.97	+ 0.28	+ 22.78
41 Betel Leaves & Nuts	0.0229	203.31	202.02	189.38	+ 0.64	+ 7.36
Clothing and footwear	7.5708	210.19	209.51	192.38	+ 0.32	+ 9.26
42 Cotton Cloth	1.7286	206.81	206.19	179.59	+ 0.30	+ 15.16
43 Woolen Cloth	0.8759	228.48	228.36	208.28	+ 0.05	+ 9.70
44 Readymade Garments	0.9739	211.17	210.19	189.32	+ 0.47	+ 11.54
45 Woolen Readymade Garments	0.3964	218.34	218.34	192.45	+ 0.00	+ 13.45
46 Hosiery	0.5094	221.44	220.45	197.66	+ 0.45	+ 12.03
47 Dopatta	0.4412	226.08	225.70	207.23	+ 0.17	+ 9.10
48 Cleaning and Laundry	0.2110	230.67	229.21	210.77	+ 0.64	+ 9.44
49 Tailoring	0.8840	255.86	253.71	230.99	+ 0.85	+ 10.77
50 Footwear	1.5504	163.89	163.78	169.08	+ 0.07	- 3.07

Annexure A: Consumer Price Index Numbers by Commodity Groups & Commodities (2007-08=100)

Item and Specification	Weight	Index Numbers			% Change in Aug 2014 over			
		Aug 14	Jul 14	Aug 13	Jul 2014	Aug 2013		
Housing, water, Elec., Gas an	29.4149	171.65	171.62	157.59	+	0.02	+	8.92
51 House Rent	21.8149	159.82	159.82	148.24	+	0.00	+	7.81
52 Construction Input Items	0.5623	234.79	234.10	215.23	+	0.29	+	9.09
53 Construction Wage Rates	0.3331	201.60	200.14	187.03	+	0.73	+	7.79
54 Water Supply	0.4971	149.92	149.92	141.53	+	0.00	+	5.93
55 Electricity	4.3985	227.44	227.44	196.37	+	0.00	+	15.82
56 Gas	1.5756	143.81	143.81	143.81	+	0.00	+	0.00
57 Kerosene Oil	0.0057	279.05	278.37	280.70	+	0.24	-	0.59
58 Firewood Whole	0.2277	265.16	264.49	245.25	+	0.25	+	8.12
Furnishing and household equi	4.2082	205.48	204.42	188.99	+	0.52	+	8.73
59 Furniture	0.3315	196.29	195.17	178.39	+	0.57	+	10.03
60 Household Textiles	0.6489	200.71	199.95	183.82	+	0.38	+	9.19
61 Household Equipment	0.5936	171.16	170.88	163.24	+	0.16	+	4.85
62 Utensils	0.3212	206.97	206.30	187.69	+	0.32	+	10.27
63 Plastic Products	0.2547	196.98	195.95	185.38	+	0.53	+	6.26
64 Washing Soaps & Detergents	0.7893	221.65	221.06	207.01	+	0.27	+	7.07
65 Sewing Needle & Dr Cell	0.1496	182.20	182.15	168.42	+	0.03	+	8.18
66 Household Servant	1.0432	222.19	219.87	199.82	+	1.06	+	11.20
67 Marriage Hall Charges	0.0762	225.21	224.45	202.60	+	0.34	+	11.16
Health	2.1868	173.42	173.40	162.32	+	0.01	+	6.84
68 Drugs & Medicines	1.2667	145.60	145.59	141.30	+	0.01	+	3.04
69 Medical Equipments	0.0080	220.56	220.36	205.83	+	0.09	+	7.16
70 Doctor (MBBS) Clinic Fee	0.5904	234.15	234.15	207.25	+	0.00	+	12.98
71 Medical Tests	0.3217	170.34	170.28	161.52	+	0.04	+	5.46
Transport	7.2023	198.70	198.38	190.63	+	0.16	+	4.23
72 Motor Vehicles	0.6630	163.48	160.37	158.44	+	1.94	+	3.18
73 Motor Vehicle Accessories	0.2439	229.13	228.75	218.09	+	0.17	+	5.06
74 Motor Fuel	3.0269	190.47	190.45	184.92	+	0.01	+	3.00
75 Mechanical Service	0.4552	206.40	206.25	192.91	+	0.07	+	6.99
76 Motor Vehicle Tax	0.1099	210.18	210.18	153.74	+	0.00	+	36.71
77 Transport Services	2.7034	212.03	212.03	203.54	+	0.00	+	4.17
Communication	3.2198	129.83	129.85	129.65	-	0.02	+	0.14
78 Postal Services	0.0662	216.02	215.95	215.89	+	0.03	+	0.06
79 Communication & Apparatus	3.1536	128.02	128.05	127.84	-	0.02	+	0.14
Recreation and culture	2.0227	189.02	188.76	181.28	+	0.14	+	4.27
80 Recreation & Culture	0.8634	127.46	127.43	124.61	+	0.02	+	2.29
81 Text Books	0.5706	280.60	279.73	266.87	+	0.31	+	5.14
82 Newspapers	0.1934	175.42	175.42	170.49	+	0.00	+	2.89
83 Stationery	0.3953	197.98	197.92	186.81	+	0.03	+	5.98
Education	3.9431	191.45	191.33	166.03	+	0.06	+	15.31
84 Education	3.9431	191.45	191.33	166.03	+	0.06	+	15.31
Restaurants and hotels	1.2286	239.85	239.23	216.32	+	0.26	+	10.88
85 Readymade Food	1.2286	239.85	239.23	216.32	+	0.26	+	10.88
Misc. goods and services	2.7550	218.63	216.98	204.07	+	0.76	+	7.13
86 Personal Care	1.4935	202.70	200.54	187.02	+	1.08	+	8.38
87 Cosmetics	0.3853	183.29	183.13	168.14	+	0.09	+	9.01
88 Blades	0.0322	184.82	184.82	178.04	+	0.00	+	3.81
89 Personal Equipments	0.8440	264.24	262.76	251.61	+	0.56	+	5.02

Annexure B: Wholesale Price Indices by Major Groups & Commodities

(2007-08=100)

	Index Numbers				% Change in Aug 2014 over		
General	100.0000	214.73	215.76	207.85	-	0.48	+ 3.31
Agriculture Forestry & Fisher	25.7674	224.73	230.64	218.23	-	2.56	+ 2.98
001 Wheat	0.6297	214.37	207.97	215.13	+	3.08	- 0.35
002 Maize	0.6764	193.63	191.76	194.89	+	0.98	- 0.65
003 Rice	2.4413	180.50	179.66	177.57	+	0.47	+ 1.65
004 Sorghum / Jowar	0.0214	328.11	323.08	265.69	+	1.56	+ 23.49
005 Millet / Bajra	0.0374	174.19	174.47	190.24	-	0.16	- 8.44
006 Vegetables	1.2441	304.25	247.48	297.02	+	22.94	+ 2.43
007 Fresh Fruits	1.5144	256.65	321.25	245.49	-	20.11	+ 4.55
008 Dry Fruits	0.2478	217.97	217.95	191.77	+	0.01	+ 13.66
009 Cotton Seeds	1.1511	216.43	231.50	165.07	-	6.51	+ 31.11
010 Other Oil Seeds	0.0722	189.39	190.46	173.57	-	0.56	+ 9.11
011 Edible Roots / Potatoes	0.2540	550.88	543.47	217.93	+	1.36	+ <u>152.78</u>
012 Stimulant & Spice Crops	0.1634	429.22	460.25	241.41	-	6.74	+ <u>77.80</u>
013 Pulses	0.4901	194.38	198.96	180.97	-	2.30	+ 7.41
014 Sugar Crops	1.0725	267.92	267.92	267.92	+	0.00	+ 0.00
015 Fibre Crops	5.3169	175.37	201.65	214.52	-	13.03	- 18.25
016 Unmanufactured Tobacco	0.0742	206.81	204.74	176.34	+	1.01	+ 17.28
017 Poultry	0.5633	212.06	206.33	237.40	+	2.78	- 10.67
018 Raw Milk from Bovine Animals	7.0279	243.95	242.57	221.65	+	0.57	+ 10.06
019 Eggs	0.5034	218.87	176.03	180.14	+	24.34	+ 21.50
020 Raw Animal Materials / Wool	0.0351	161.50	164.70	153.23	-	1.94	+ 5.40
021 Hides & Fur Skins, Raw	0.4834	145.14	146.12	140.87	-	0.67	+ 3.03
022 Fuel Wood in Logs	0.0179	243.47	243.47	231.13	+	0.00	+ 5.34
023 Fish Live Fresh or Chilled	1.7295	243.89	246.21	250.91	-	0.94	- 2.80
Ores/Minerals, Elec., Gas & W	12.0389	242.91	242.67	239.51	+	0.10	+ 1.42
024 Coal not Agglomerated	0.7508	223.53	223.53	223.53	+	0.00	+ 0.00
025 Natural Gas Liquified	5.7385	202.79	202.34	203.57	+	0.22	- 0.38
026 Salt & Pure Sodium Chloride	0.0584	248.50	243.18	205.80	+	2.19	+ 20.75
027 Electrical Energy	5.4912	287.44	287.44	279.61	+	0.00	+ 2.80
Food, Beverages, Tobacco, Textil	31.1122	207.15	205.50	197.43	+	0.80	+ 4.92
Food Products, Beverages &	20.0718	213.92	210.83	199.00	+	1.47	+ 7.50
028 Meat of Animals	3.4559	252.65	246.01	233.93	+	2.70	+ 8.00
029 Vegetables & Fruit Juice	0.0058	194.12	194.12	191.31	+	0.00	+ 1.47
030 Dried Fruits & Nuts	0.1733	219.98	217.80	223.20	+	1.00	- 1.44
031 Fruit Juices	0.3880	171.34	171.20	165.05	+	0.08	+ 3.81
032 Vegetable Oils Refined	1.9242	163.56	164.33	160.13	-	0.47	+ 2.14
033 Vegetable Ghee	1.5632	139.94	140.35	140.30	-	0.29	- 0.26
034 Oil Cakes	0.9611	212.95	232.05	174.89	-	8.23	+ 21.76
035 Processed Liquid Milk	4.4437	231.82	223.02	205.54	+	3.95	+ 12.79
036 Milk & Cream in Solid Form	0.0316	214.15	212.82	179.40	+	0.62	+ 19.37
037 Ice Cream	0.0047	219.91	219.91	209.53	+	0.00	+ 4.95
038 Dairy Products N.E.C	0.0117	235.94	235.94	212.59	+	0.00	+ 10.98
039 Wheat Flour	2.3034	201.98	195.47	195.91	+	3.33	+ 3.10
040 Other Cereal Flour	0.0604	136.37	138.16	144.64	-	1.30	- 5.72
041 Sugar Refined	1.7975	220.01	216.56	211.85	+	1.59	+ 3.85
042 Chocolate	0.0139	99.19	99.19	99.19	+	0.00	+ 0.00
043 Sugar Confectionary	0.0738	102.28	102.28	102.28	+	0.00	+ 0.00
044 Coffee & Tea	0.7303	181.34	184.43	230.71	-	1.68	- 21.40
045 Spices	0.1449	191.50	191.70	195.67	-	0.10	- 2.13
046 Other Food Products	0.0336	294.38	293.72	316.68	+	0.22	- 7.04
047 Mineral Water	0.0207	185.63	185.63	180.22	+	0.00	+ 3.00
048 Beverages	0.6303	169.18	167.46	139.63	+	1.03	+ 21.16
049 Tobacco Products	1.2998	290.52	290.52	242.41	+	0.00	+ 19.85
Textiles & Apparels	10.3289	194.26	194.63	195.98	-	0.19	- 0.88
050 Cotton Yarn	5.2491	195.72	200.42	217.78	-	2.35	- 10.13
051 Nylon Yarn	0.1719	163.67	161.40	187.63	+	1.41	- 12.77
052 Blended Yarn	0.1689	193.92	193.60	198.41	+	0.17	- 2.26
053 Woven Fabrics	0.0128	226.82	226.82	217.16	+	0.00	+ 4.45
054 Cotton Fabrics	0.6343	196.81	196.81	187.43	+	0.00	+ 5.00
055 Other Fabrics	1.1016	203.01	197.56	175.74	+	2.76	+ 15.52
056 Silk & Reyon Fabrics	0.7350	175.35	165.85	160.08	+	5.73	+ 9.54
057 Towels	0.1235	244.18	242.19	216.98	+	0.82	+ 12.54
058 Blankets	0.0029	219.66	219.66	185.21	+	0.00	+ 18.60
059 Bed Sheets	0.0913	242.12	242.12	215.79	+	0.00	+ 12.20

Annexure B: Wholesale Price Indices by Major Groups & Commodities (2007-08=100)

		Index Numbers				% Change in Aug 2014 over			
060	Quilts	0.0019	172.42	172.42	156.32	+	0.00	+	10.30
061	Woolen Carpets	0.0383	132.14	132.14	106.55	+	0.00	+	24.02
062	Synthetic Carpets	0.0566	125.42	116.10	114.41	+	8.03	+	9.62
063	Hosiery Products	0.8832	206.13	204.27	185.30	+	0.91	+	11.24
064	Readymade Garments	1.0576	180.12	175.43	152.13	+	2.67	+	18.40
	Leather Products	0.7115	203.42	213.10	173.96	-	4.54	+	16.93
065	Leather Without Hair	0.2973	216.45	223.51	136.23	-	3.16	+	<u>58.89</u>
066	Other Leather N.E.C	0.2567	230.78	249.44	238.82	-	7.48	-	3.37
067	Footwears	0.1575	134.22	134.22	139.49	+	0.00	-	3.78
	Other Transportable Goods	22.3659	215.17	215.63	209.59	-	0.21	+	2.66
068	Timber	0.0165	184.69	184.69	160.48	+	0.00	+	15.09
069	Printing Paper	0.4279	169.34	172.62	164.45	-	1.90	+	2.97
070	Hard Board	0.1579	229.17	229.17	200.00	+	0.00	+	14.59
071	Coke	0.2797	163.45	163.45	163.45	+	0.00	+	0.00
072	Motor Spirit	1.5336	182.40	182.40	176.54	+	0.00	+	3.32
073	Diesel Oil	5.2664	260.69	260.69	264.12	+	0.00	-	1.30
074	Kerosine Oil	0.2151	288.01	288.01	270.07	+	0.00	+	6.64
075	Furnace Oil	3.2664	169.47	173.10	172.70	-	2.10	-	1.87
076	Mobil Oil	0.7114	201.17	201.17	191.04	+	0.00	+	5.30
077	Chemicals	1.7720	194.21	193.10	164.53	+	0.57	+	18.04
078	Dyeing Material	0.1539	143.77	143.77	107.23	+	0.00	+	34.08
079	Fertilizers	2.8657	270.28	268.66	269.62	+	0.60	+	0.24
080	Pesticides	0.2763	270.02	262.86	212.36	+	2.72	+	27.15
081	Insecticides	0.1276	181.05	181.89	124.43	-	0.46	+	45.50
082	Paints & Varnishes	0.1916	276.16	275.71	247.56	+	0.16	+	11.55
083	Medicines	1.1428	144.21	144.21	138.85	+	0.00	+	3.86
084	Soaps & Detergents	0.8168	175.81	183.11	177.56	-	3.99	-	0.99
085	Auto Tyres	0.2703	188.21	188.21	185.57	+	0.00	+	1.42
086	Plastic Products	0.4550	205.01	203.08	199.06	+	0.95	+	2.99
087	Glass sheets	0.2089	209.86	209.86	203.49	+	0.00	+	3.13
088	Other Glass Articles	0.1635	218.27	218.27	206.09	+	0.00	+	5.91
089	Ceramics & Sanitary Fixture	0.0244	200.91	200.07	165.08	+	0.42	+	21.70
090	Bricks, Blocks & Tiles	0.1566	202.38	201.73	186.85	+	0.32	+	8.31
091	Cement	1.8145	207.44	207.76	194.84	-	0.15	+	6.47
092	Bed Foam	0.0006	150.83	150.83	144.33	+	0.00	+	4.50
093	Matches	0.0505	143.20	143.20	143.20	+	0.00	+	0.00
	Metal Product, Machinery & Eq	8.7156	172.17	171.57	166.14	+	0.35	+	3.63
094	Pig Iron	0.0593	128.97	128.97	128.97	+	0.00	+	0.00
095	Steel Bar & Sheets	1.4022	149.75	146.08	140.51	+	2.51	+	6.58
096	Pipe Fittings	0.0780	175.34	175.34	149.13	+	0.00	+	17.58
097	Steel Products	0.3879	170.24	170.24	167.61	+	0.00	+	1.57
098	Engines & Motors	0.0046	109.07	109.07	109.07	+	0.00	+	0.00
099	Vacuum Pumps	0.0155	115.39	115.39	115.39	+	0.00	+	0.00
100	Air Conditioners	0.0049	195.53	181.12	179.78	+	7.96	+	8.76
101	Cultivators	0.0551	226.90	226.90	189.23	+	0.00	+	19.91
102	Chuff Cutter	0.1293	149.20	149.20	144.94	+	0.00	+	2.94
103	Tractors	0.0028	214.54	214.54	161.96	+	0.00	+	32.46
104	Lathe Machines	0.0525	208.81	208.81	147.68	+	0.00	+	41.39
105	Concrete Mixture	0.0107	138.83	138.83	138.83	+	0.00	+	0.00
106	Fridge,WashM,SewM,Fans,Iron	1.1645	195.93	195.93	179.92	+	0.00	+	8.90
107	Electric Wires	0.0912	179.18	179.18	168.13	+	0.00	+	6.57
108	Lighting Equipments	1.4431	164.95	164.95	162.27	+	0.00	+	1.65
109	Radio & Television	0.1843	126.49	126.49	126.49	+	0.00	+	0.00
110	Motor Vehicles	0.0244	182.59	182.59	173.99	+	0.00	+	4.94
111	Motorcycles	0.2570	126.92	126.70	124.80	+	0.17	+	1.70
112	Bicycles	3.3483	182.84	182.84	180.99	+	0.00	+	1.02