



Monthly Review on Price Indices



April, 2014
(Base 2007-08)

Government of Pakistan
Statistics Division
Pakistan Bureau of Statistics
Islamabad

I. Inflation in Brief

1. CPI inflation, General, increased by 9.2% on year-on-year basis in April 2014 as compared to 8.5% in the previous month and by 5.8% in April 2013. On month-on-month basis, it increased by 1.7% in April 2014 as compared to a decrease of 1.0% in the previous month and increased by 1.1% in April 2013.
2. Core inflation measured by non-food non-energy CPI (Core NFNE) increased by 8.5% on (YoY) basis in April 2014 as compared to 7.6% in the previous month and by 8.7% in April 2013. On (MoM) basis, it increased by 1.9% in April 2014 as compared to 0.3% in the previous month and 1.1% in April 2013.
3. Core inflation, measured by 20% weighted trimmed mean CPI (Core Trimmed) increased by 9.0% on (YoY) basis in April 2014 as compared to 8.1% in the previous month and by 7.6% in April 2013. On (MoM) basis, it increased by 0.9% in April 2014 as compared to 0.3% in the previous month and by 0.7% in April 2013.
4. SPI inflation on YoY basis increased by 9.4% in April 2014 as compared to 9.0% a month earlier and 6.6% in April 2013. On MoM basis, it increased by 0.1% in April 2014 as compared to 2.1% a month earlier and a decreased by 0.3% in April 2013.
5. WPI inflation on YoY basis increased by 7.0% in April 2014 as compared to 7.7% a month earlier and 6.8% in April 2013. WPI inflation on MoM basis increased by 0.1% in April 2014 as compared to 0.3% a month earlier and by 0.8% in April 2013.
6. Figures 1 and 2 show graphically the data of Table 1. Table 1.1 shows "Period Average" and "YoY" percent changes in indices of three years.

Table 1: Inflation (%) (Base 2007-08)

Period	CPI						Core Inflation				SPI**		WPI	
	General		Food		Non-food		NFNE*		Trimmed		YoY	MoM	YoY	MoM
	YoY	MoM	YoY	MoM	YoY	MoM	YoY	MoM	YoY	MoM				
Mar 13	6.6	0.4	6.3	0.5	6.7	0.3	9.0	0.4	8.4	0.2	8.7	0.8	7.9	0.3
Apr 13	5.8	1.1	5.5	1.4	6.0	0.9	8.7	1.1	7.6	0.7	6.6	-0.3	6.8	0.8
May 13	5.1	0.5	6.5	1.1	4.1	0.1	8.1	0.3	6.7	0.3	6.8	0.1	4.1	-0.4
Jun 13	5.9	0.7	7.9	1.1	4.4	0.5	7.8	0.4	6.8	0.6	7.9	2.5	5.2	1.0
Jul 13	8.3	2.0	9.2	3.0	7.6	1.3	8.2	1.5	7.8	1.2	9.8	2.3	6.5	1.6
Aug 13	8.5	1.2	10.3	2.0	7.3	0.6	8.5	0.6	7.9	0.6	10.1	1.5	8.3	2.6
Sep 13	7.4	-0.3	7.9	-1.5	7.0	0.6	8.6	0.5	7.6	0.6	8.8	0.1	8.7	0.7
Oct 13	9.1	2.0	9.8	1.7	8.6	2.2	8.4	0.9	9.0	0.8	10.5	1.2	9.8	1.1
Nov 13	10.9	1.3	13.0	2.6	9.4	0.3	8.5	0.3	9.2	0.4	14.1	3.2	10.4	0.2
Dec 13	9.2	-1.3	9.3	-3.3	9.1	0.2	8.2	0.2	8.7	0.4	11.1	-2.5	8.9	-1.0
Jan 14	7.9	0.5	7.2	0.0 ¹	8.4	0.9	8.0	1.0	8.2	0.6	7.7	-1.2	8.1	0.5
Feb 14	7.9	-0.3	7.6	-1.0	8.2	0.2	7.8	0.2	8.1	0.2	7.5	-0.1	7.6	-0.1
Mar 14	8.5	1.0	9.3	2.1	8.0	0.2	7.6	0.3	8.1	0.3	9.0	2.1	7.7	0.3
Apr 14	9.2	1.7	9.9	2.0	8.7	1.5	8.5	1.9	9.0	0.9	9.4	0.1	7.0	0.1

*NFNE is non-food non-energy,

** SPI for quintile 1

¹ Actual figure is -0.04, displayed in rounded figure

Table 1.1 : Period Average and YoY % Changes of Indices (Base 2007-08)

Index	Averages July-April % Changes			April over April % Changes		
	2013-14	2012-13	2011-12	2013-14	2012-13	2011-12
CPI	8.69	7.75	10.84	9.18	5.80	11.27
SPI	9.78	7.86	6.72	9.37	6.56	7.53
WPI	8.28	7.91	11.24	6.96	6.80	3.80

Figure 1: CPI Inflation YoY, Special Indices

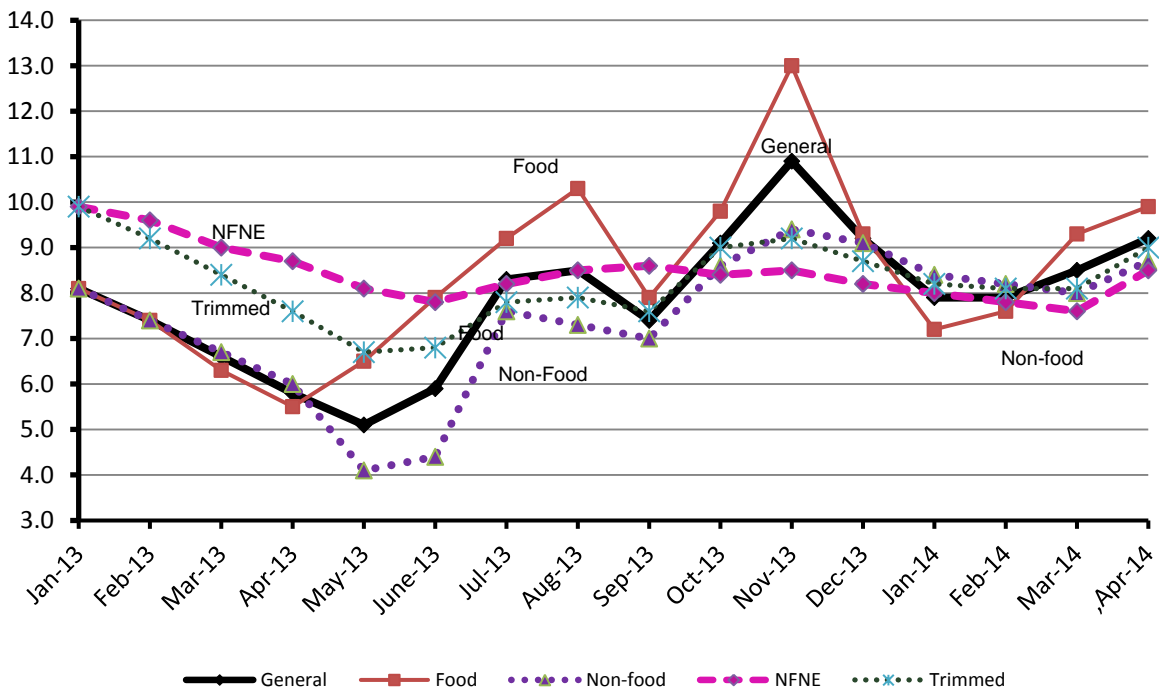
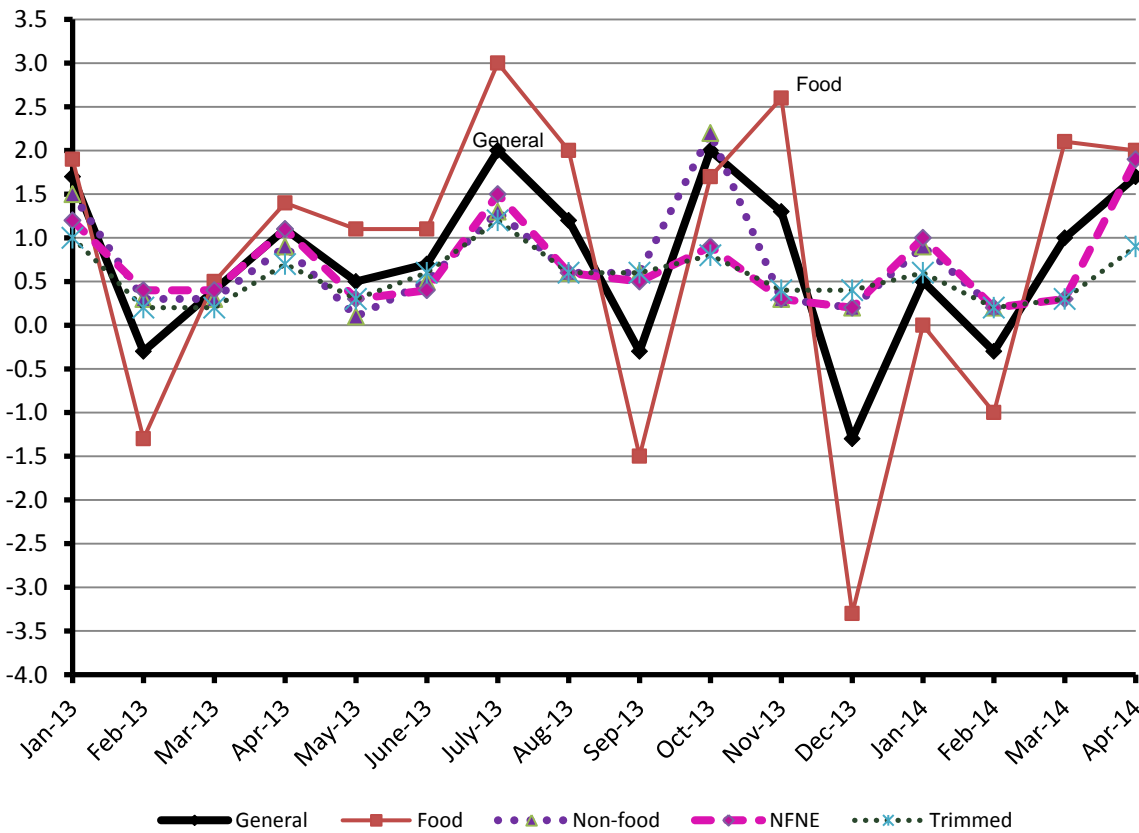


Figure 2: CPI Inflation MoM, Special Indices



II. Consumer Price Index (CPI)

The Consumer Price Index of April, 2014 has increased by 1.70% over Mar, 2014 and increased by 9.18% over corresponding month of the last year, i.e. April 2013.

Table 2 : Consumer Price Index by Group of Commodities and Services (Base 2007-08)

No	Group	Group Weight (%)	Indices			% Change Apr 2014 over		Impact (In % points) Apr 2014 Over	
			Apr 2014	Mar 2014	Apr 2013	Mar 2014	Apr 2013	Mar 2014	Apr 2013
	General	100.00	194.06	190.82	177.74	1.70	9.18	1.70	9.18
1.	Food & Non-alcoholic Bev.	34.83	216.45	211.97	197.62	2.11	9.53	0.82	3.69
	<i>Non-perishable Food Items</i>	29.84	213.34	214.15	197.05	-0.38	8.27	-0.13	2.74
	<i>Perishable Food Items</i>	4.99	235.05	198.94	201.08	18.15	16.89	0.94	0.95
2.	Alcoholic Bev. & Tobacco	1.41	221.91	221.82	191.16	0.04	16.09	0.00	0.24
3.	Clothing & Footwear	7.57	202.73	200.29	182.25	1.22	11.24	0.10	0.87
4.	Housing, Water, Electricity, Gas & Fuels	29.41	169.46	166.99	154.54	1.48	9.65	0.38	2.47
5.	Furnishing & Household Equipment Maintenance	4.21	200.99	198.85	183.59	1.08	9.48	0.05	0.41
6.	Health	2.19	170.58	169.93	159.34	0.38	7.05	0.01	0.14
7.	Transport	7.20	195.61	196.22	187.70	-0.31	4.21	-0.02	0.32
8.	Communication	3.22	129.80	129.85	128.64	-0.04	0.90	0.00	0.02
9.	Recreation & Culture	2.02	187.95	183.72	175.62	2.30	7.02	0.04	0.14
10.	Education	3.94	184.84	168.53	161.66	9.68	14.34	0.34	0.51
11.	Restaurants & Hotels	1.23	236.98	235.52	208.62	0.62	13.59	0.01	0.20
12.	Miscellaneous	2.76	213.15	214.42	202.51	-0.59	5.25	-0.02	0.16

Main contributors to month-on-month and year-on-year percentage changes are given below and detail is given in Annexure A.

1. **Month-on-month** Top few commodities which varied from previous month i.e. March 2014 are given below:-

Food Items Increased: Potatoes (42.06%), Fresh Fruits (22.02%), Fresh Vegetables (14.72%), Onions (9.04%), Beverages (3.46%), Betel Leaves & Nuts (2.87%), Chicken (2.63%), Milk Powder (2.36%), Condiments (1.48%), Pulse Moong (1.37%), Milk Products (1.32%), and Fish (1.00%).

Decreased: Eggs (24.48%), Tomatoes (13.56%), Wheat (6.91%), Wheat Flour (2.46%), Pulse Gram (1.32%), and Wheat Product (1.26%).

Non-food Items Increased: Education (9.68%), Text Books (4.26%), Marriage Hall Charges (2.79%), Cotton Cloth (2.77%), Stationery (2.70%), Medical Equipments (2.17%), House Rent (2.10%), Hosiery (1.96%), House Hold Servant (1.85%), Readymade Garments (1.61%), Dopatta (1.44%), Construction input items (1.43%), Construction Wage Rate (1.20%), and Furniture (1.09%).

Decreased: Kerosene Oil (4.76%), Personal Equipments (2.50%), Motor Vehicles (1.70%), and Motor Fuel (1.18%).

2. **Year-on-year:** Top few commodities which varied from previous year i.e. April 2013 are given below:-

Food Items Increased: Potatoes (192.80%), Pulse Moong (29.47%), Chicken (24.66%), Pulse Masoor (20.86%), Wheat Flour (18.54%), Wheat Products (18.39%), Wheat (17.42%), Cigarettes (16.20%), Fresh Vegetables (15.55%), Fresh Fruits (14.52%), Readymade Food (13.59%), and Beans (13.41%).

Decreased: Onions (30.19%), Besan (19.91%), Pulse Gram (16.20%), Gram Whole (11.44%), Tomatoes (6.97%), Tea (6.37%), and Mustard Oil (1.21%).

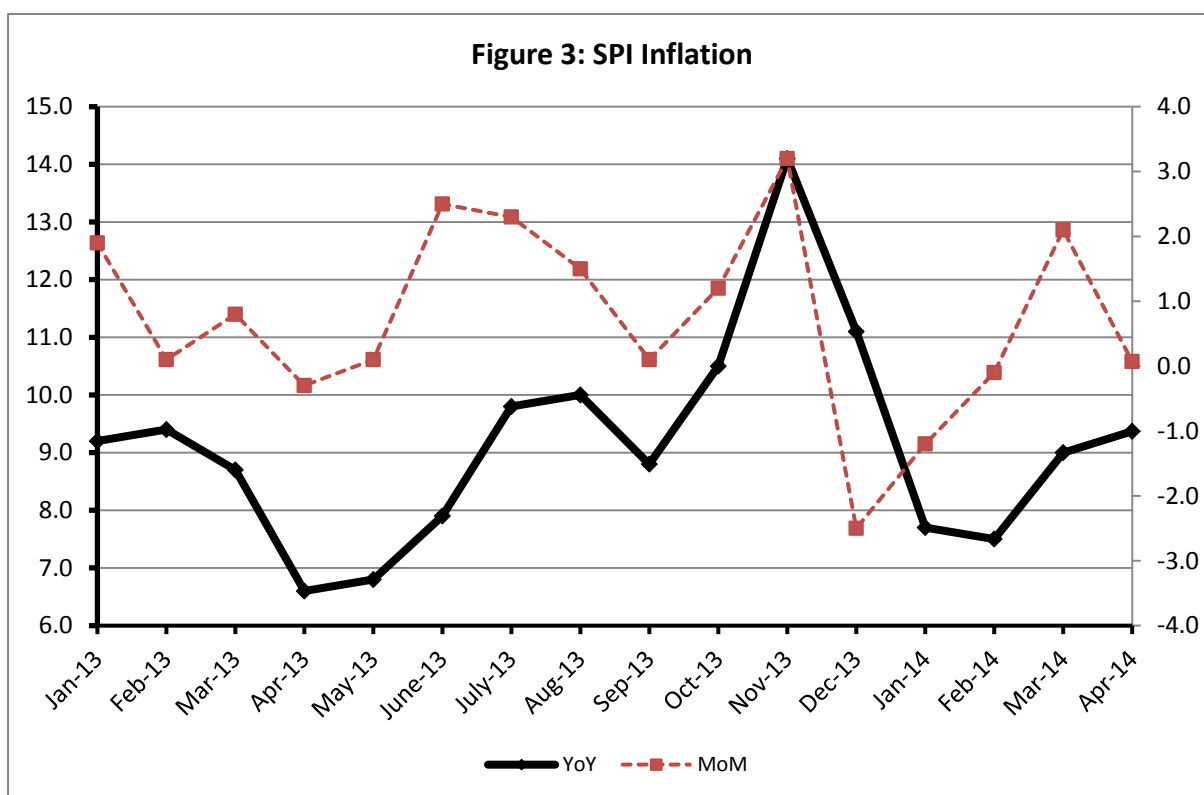
Non-food Items Increased: Postal Service (23.66%), Cosmetics (19.80%), Sewing Needle & Dry Cell (15.87%), Electricity (15.82%), Education (14.34%), Doctor (MBBS) Clinic Fee (14.13%), Woolen Readymade Garments (13.45%), Tailoring (12.74%), Readymade Garments (12.40%), and Marriage Hall Charges (12.21%).

Decreased: Personal Equipments (1.53%).

III. Sensitive Price Indicator

Quintile-wise percentage changes YoY and MoM are given below in Table 3. The series from January 2013 to April 2014 is also graphed below in Figure 3.

Table 3 : Sensitive Price Indicator (Base 2007-08)					
Quintiles	Indices			% Change Apr 2014 over	
	Apr 2014	Mar 2014	Apr 2013	Mar 2014	Apr 2013
1	203.91	203.77	186.44	0.07	9.37
2	209.58	209.24	192.67	0.16	8.78
3	212.44	212.77	191.35	-0.16	11.02
4	214.15	214.61	192.76	-0.21	11.10
5	212.68	213.12	193.28	-0.21	10.04
Combined	211.78	212.08	192.02	-0.14	10.29



IV. Wholesale Price Index

The Wholesale Price Index for April 2014 is increased by 0.10% over March 2014. It is increased by 6.96% over the corresponding month of the last year. YoY and MoM movements, from March 2013 to April 2014 are also graphed below in Figure 4.

Table 4 : Wholesale Price Index by Group of Commodities (Base 2007-08)									
No.	Group	Group Weight (%)	Indices			% Change Apr 2014 over		Impact (in %age points) Apr 2014 over	
			Apr 2014	Mar 2014	Apr 2013	Mar 2014	Apr 2013	Mar 2014	Apr 2013
	General	100.00	211.88	211.66	198.09	0.10	6.96	0.10	6.96
1.	Agriculture, Forestry & Fishery Products	25.77	221.91	217.63	205.03	1.97	8.23	0.52	2.19
2.	Ores & Minerals, Electricity, Gas & Water	12.04	243.12	243.45	213.96	-0.14	13.63	-0.02	1.77
3.	Food Products, Beverages & Tobacco, Textiles, Apparel & Leather Products	31.11	202.07	201.93	191.67	0.07	5.43	0.02	1.63
	i. Food Products, Bev. & Tobacco	20.07	205.82	205.40	193.47	0.20	6.38	0.04	1.25
	ii. Textiles and Apparel	10.33	192.99	192.57	193.04	0.22	-0.03	0.02	0.00
	iii. Leather Products	0.71	228.06	239.85	121.00	-4.92	88.48	-0.04	0.38
4.	Other Transportable Goods except Metal Products, Machinery & Equipments	22.37	213.45	217.63	205.36	-1.92	3.94	0.44	0.91
5.	Metal Products, Machinery & Equipment	8.72	170.06	169.52	159.93	0.32	6.33	0.02	0.45

Main contributors to month-on-month and year-on-year percentage changes are given below and detail is given in Annexure B.

1. **Month-on-month** Top few commodities which varied from previous month i.e. March, 2014 are given below:-

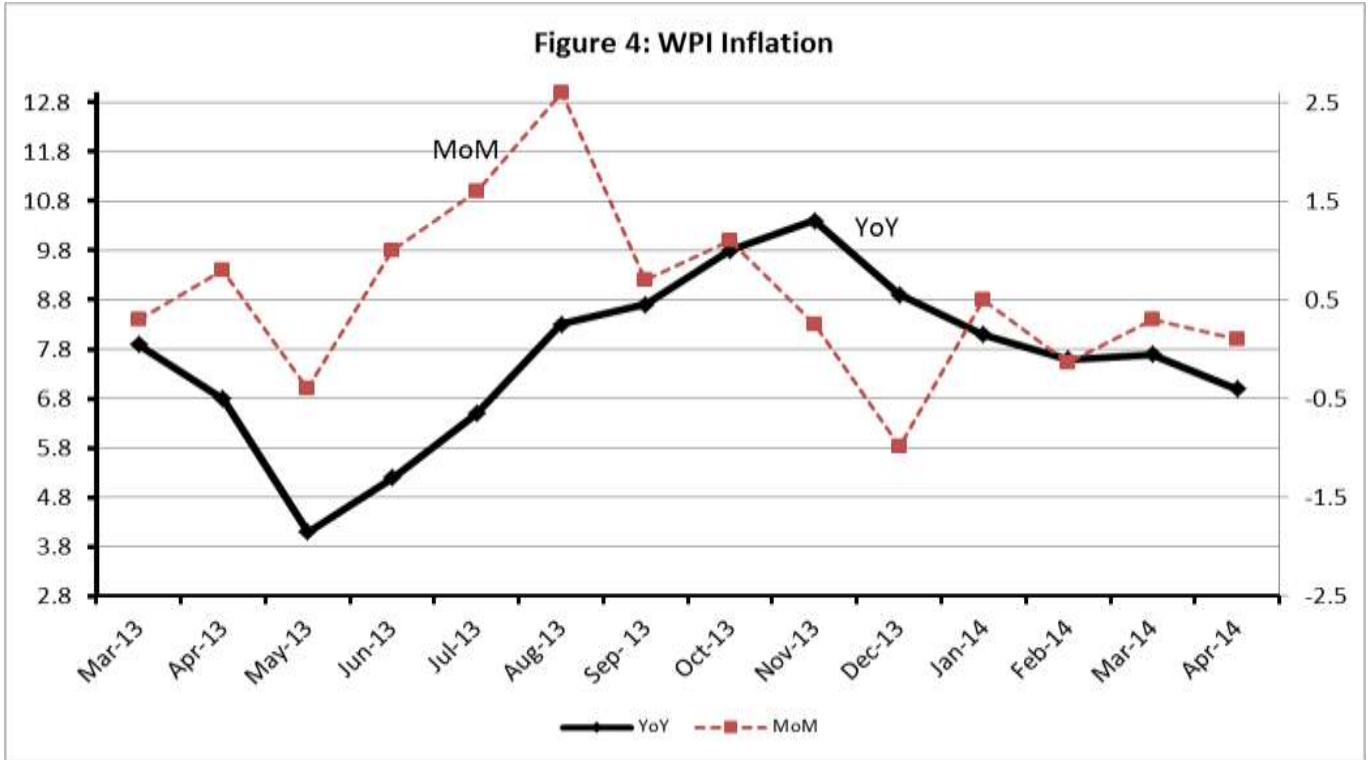
Increased: Potatoes (38.89%), Dyeing Material (33.68%), Insecticides (30.37%), Fresh Fruits (21.23%), Vegetables (21.07%), Tractors (10.99%), Readymade Garments (10.98%), Other Fabrics (7.02%), Cotton Seeds (6.11%), Jowar (5.22%), Stimulants & Spice Crops (4.68%), Oil Cakes (4.63%), Maize (4.58%), Poultry (4.49%) and Beverages (4.09%).

Decreased: Eggs (29.71%), Wheat (7.31%), Furnace Oil (6.81%), Other Oil Seeds (6.12%), Nylon Yarn (5.50%) and Coffee & Tea (4.88%) and Diesel Oil (4.44%).

2. **Year-on-year** Top few commodities which varied from previous year i.e. April, 2013 are given below:-

Increased: Potatoes (231.74%), Stimulants and Spice Crops (92.04%), Leather without hair (85.20%), Insecticides (44.42%), Lathe Machine (41.39%) Jowar (36.05%), Dyeing Material (34.08%), Tractors (32.46%) and Poultry (31.38%).

Decreased: Spices (23.76%) and Other Cereal Flour (18.94%).



Annexure A: Consumer Price Index Numbers by Commodity Groups & Commodities (2007-2008=100)

Item and Specification	Weight	Index Numbers			% Change in Apr 2014 over			
		Apr 14	Mar 14	Apr 13	Mar 2014	Apr 2013		
General	100.0000	194.06	190.82	177.74	+	1.70	+	9.18
Food & Non-alcoholic Beverage	34.8343	216.45	211.97	197.62	+	2.11	+	9.53
01 Wheat	0.3477	222.02	238.50	189.08	-	6.91	+	17.42
02 Wheat Flour	4.1648	229.81	235.61	193.86	-	2.46	+	18.54
03 Wheat Product	0.0959	221.65	224.47	187.22	-	1.26	+	18.39
04 Besan	0.1500	171.35	172.71	213.94	-	0.79	-	19.91
05 Rice	1.5821	193.79	194.31	182.84	-	0.27	+	5.99
06 Cereals	0.1563	233.92	233.06	213.49	+	0.37	+	9.57
07 Bakery & Confectionary	1.1550	201.95	201.00	182.03	+	0.47	+	10.94
08 Nimco	0.4574	225.89	224.39	202.35	+	0.67	+	11.63
09 Meat	2.4303	236.36	235.42	221.88	+	0.40	+	6.53
10 Chicken	1.3596	208.71	203.37	167.42	+	2.63	+	24.66
11 Fish	0.2970	220.73	218.54	202.61	+	1.00	+	8.94
12 Milk Fresh	6.6800	236.48	234.51	221.39	+	0.84	+	6.82
13 Milk Products	0.6338	232.27	229.24	212.73	+	1.32	+	9.19
14 Milk Powder	0.1129	213.11	208.19	188.72	+	2.36	+	12.92
15 Eggs	0.4555	179.91	238.24	163.02	-	24.48	+	10.36
16 Mustard Oil	0.0952	157.86	159.32	159.80	-	0.92	-	1.21
17 Cooking Oil	1.7538	162.26	162.30	161.31	-	0.02	+	0.59
18 Vegetable Ghee	2.0714	159.80	160.38	155.79	-	0.36	+	2.57
19 Dry Fruits	0.2543	232.17	232.50	211.97	-	0.14	+	9.53
20 Fresh Fruits	1.8649	234.38	192.09	204.67	+	22.02	+	14.52
21 Pulse Masoor	0.2712	178.68	178.99	147.84	-	0.17	+	20.86
22 Pulse Moong	0.2336	282.59	278.78	218.26	+	1.37	+	29.47
23 Pulse Mash (Washed)	0.2098	194.28	195.09	186.25	-	0.42	+	4.31
24 Pulse Gram	0.2361	169.47	171.73	202.23	-	1.32	-	16.20
25 Gram Whole	0.1616	178.38	178.82	201.43	-	0.25	-	11.44
26 Beans	0.0269	247.85	247.84	218.55	+	0.00	+	13.41
27 Potatoes	0.4889	384.45	270.62	131.30	+	42.06	+	<u>192.80</u>
28 Onion	0.5530	221.58	203.21	317.39	+	9.04	-	30.19
29 Tomatoes	0.4609	144.04	166.63	154.84	-	13.56	-	6.97
30 Fresh Vegetables	1.6232	221.23	192.85	191.46	+	14.72	+	15.55
31 Sugar	1.0445	191.18	192.40	191.97	-	0.63	-	0.41
32 Gur	0.0220	244.04	242.61	220.37	+	0.59	+	10.74
33 Honey	0.0446	279.40	277.48	256.45	+	0.69	+	8.95
34 SweetMeat	0.2483	225.66	224.66	208.42	+	0.45	+	8.27
35 Beverages	1.1990	196.47	189.90	176.35	+	3.46	+	11.41
36 Jam, Tomato Ketchup & Pickles	0.2454	193.00	192.31	182.85	+	0.36	+	5.55
37 Condiments	0.2656	238.59	235.12	215.20	+	1.48	+	10.87
38 Spices	0.5441	219.82	219.45	221.37	+	0.17	-	0.70
39 Tea	0.8377	225.89	227.06	241.26	-	0.52	-	6.37
Alcoholic Beverages, Tobacco	1.4135	221.91	221.82	191.16	+	0.04	+	16.09
40 Cigarettes	1.3906	222.30	222.30	191.31	+	0.00	+	16.20
41 Betel Leaves & Nuts	0.0229	197.90	192.37	182.06	+	2.87	+	8.70
Clothing & Footwear	7.5708	202.73	200.29	182.25	+	1.22	+	11.24
42 Cotton Cloth	1.7286	192.48	187.29	172.40	+	2.77	+	11.65
43 Woolen Cloth	0.8759	224.40	223.23	203.59	+	0.52	+	10.22
44 Readymade Garments	0.9739	202.29	199.09	179.98	+	1.61	+	12.40
45 Woolen Readymade Garments	0.3964	218.34	218.34	192.45	+	0.00	+	13.45
46 Hosiery	0.5094	214.77	210.64	192.69	+	1.96	+	11.46
47 Dopatta	0.4412	221.79	218.65	201.18	+	1.44	+	10.24
48 Cleaning and Laundry	0.2110	222.87	222.23	202.08	+	0.29	+	10.29
49 Tailoring	0.8840	242.51	240.93	215.10	+	0.66	+	12.74
50 Footwear	1.5504	163.41	163.18	149.73	+	0.14	+	9.14

Annexure A: Consumer Price Index Numbers by Commodity Groups & Commodities (2007-2008=100)

Item and Specification	Weight	Index Numbers			% Change in Apr 2014 over			
		Apr 14	Mar 14	Apr 13	Mar 2014	Apr 2013		
Housing, Water, Elec., Gas, Other	29.4149	169.46	166.99	154.54	+	1.48	+	9.65
51 House Rent	21.8149	157.05	153.82	144.57	+	2.10	+	8.63
52 Construction Input Items	0.5623	230.86	227.61	208.77	+	1.43	+	10.58
53 Construction Wage Rates	0.3331	196.20	193.88	178.65	+	1.20	+	9.82
54 Water Supply	0.4971	149.92	149.92	138.79	+	0.00	+	8.02
55 Electricity	4.3985	227.44	227.44	196.37	+	0.00	+	15.82
56 Gas	1.5756	143.81	143.81	142.58	+	0.00	+	0.86
57 Kerosene Oil	0.0057	281.05	295.11	273.79	-	4.76	+	2.65
58 Firewood Whole	0.2277	265.60	266.51	247.13	-	0.34	+	7.47
Furnished H.Hold Equip.& Hous	4.2082	200.99	198.85	183.59	+	1.08	+	9.48
59 Furniture	0.3315	192.83	190.75	174.01	+	1.09	+	10.82
60 Household Textiles	0.6489	197.88	197.21	178.84	+	0.34	+	10.65
61 Household Equipment	0.5936	169.22	167.61	161.13	+	0.96	+	5.02
62 Utensils	0.3212	202.35	200.51	182.00	+	0.92	+	11.18
63 Plastic Products	0.2547	194.12	192.33	179.07	+	0.93	+	8.40
64 Washing Soaps & Detergents	0.7893	218.08	216.51	199.93	+	0.73	+	9.08
65 Sewing Needle & Dr Cell	0.1496	177.41	176.49	153.11	+	0.52	+	15.87
66 Household Servant	1.0432	213.99	210.10	195.10	+	1.85	+	9.68
67 Marriage Hall Charges	0.0762	219.18	213.24	195.33	+	2.79	+	12.21
Health	2.1868	170.58	169.93	159.34	+	0.38	+	7.05
68 Drugs & Medicines	1.2667	144.47	144.13	140.48	+	0.24	+	2.84
69 Medical Equipments	0.0080	215.08	210.51	203.09	+	2.17	+	5.90
70 Doctor (MBBS) Clinic Fee	0.5904	227.19	226.12	199.07	+	0.47	+	14.13
71 Medical Tests	0.3217	168.40	167.41	159.58	+	0.59	+	5.53
Transport	7.2023	195.61	196.22	187.70	-	0.31	+	4.21
72 Motor Vehicles	0.6630	160.07	162.83	155.55	-	1.70	+	2.91
73 Motor Vehicle Accessories	0.2439	225.59	223.52	213.27	+	0.93	+	5.78
74 Motor Fuel	3.0269	188.42	190.67	181.16	-	1.18	+	4.01
75 Mechanical Service	0.4552	202.66	201.85	187.08	+	0.40	+	8.33
76 Motor Vehicle Tax	0.1099	153.74	153.74	153.74	+	0.00	+	0.00
77 Transport Services	2.7034	210.19	208.93	202.08	+	0.60	+	4.01
Communication	3.2198	129.80	129.85	128.64	-	0.04	+	0.90
78 Postal Services	0.0662	215.89	215.89	174.59	+	0.00	+	23.66
79 Communication & Apparatus	3.1536	127.99	128.04	127.67	-	0.04	+	0.25
Recreation & Culture	2.0227	187.95	183.72	175.62	+	2.30	+	7.02
80 Recreation & Culture	0.8634	126.96	126.95	122.39	+	0.01	+	3.73
81 Text Books	0.5706	278.49	267.10	254.82	+	4.26	+	9.29
82 Newspapers	0.1934	175.42	175.42	170.49	+	0.00	+	2.89
83 Stationery	0.3953	196.59	191.42	180.09	+	2.70	+	9.16
Education	3.9431	184.84	168.53	161.66	+	9.68	+	14.34
84 Education	3.9431	184.84	168.53	161.66	+	9.68	+	14.34
Restaurants & Hotels	1.2286	236.98	235.52	208.62	+	0.62	+	13.59
85 Readymade Food	1.2286	236.98	235.52	208.62	+	0.62	+	13.59
Miscellaneous Goods & Service	2.7550	213.15	214.42	202.51	-	0.59	+	5.25
86 Personal Care	1.4935	197.28	196.15	183.31	+	0.58	+	7.62
87 Cosmetics	0.3853	181.15	180.22	151.21	+	0.52	+	19.80
88 Blades	0.0322	182.78	182.56	174.81	+	0.12	+	4.56
89 Personal Equipments	0.8440	257.00	263.58	260.98	-	2.50	-	1.53

Annexure B: Wholesale Price Indices by Major Groups & Commodities

(2007-2008=100)

Item and Specification	Weight	Index Numbers			% Change in Apr 2014 over			
		Apr 14	Mar 14	Apr 13	Mar 2014	Apr 2013		
General	100.0000	211.88	211.66	198.09	+	0.10	+	6.96
Agriculture Forestry & Fisher	25.7674	221.91	217.63	205.04	+	1.97	+	8.23
001 Wheat	0.6297	232.52	250.86	197.38	-	7.31	+	17.80
002 Maize	0.6764	188.84	180.57	184.91	+	4.58	+	2.13
003 Rice	2.4413	179.08	178.17	171.91	+	0.51	+	4.17
004 Sorghum / Jowar	0.0214	304.45	289.35	223.78	+	5.22	+	36.05
005 Millet / Bajra	0.0374	173.13	174.91	174.63	-	1.02	-	0.86
006 Vegetables	1.2441	236.30	195.18	240.68	+	21.07	-	1.82
007 Fresh Fruits	1.5144	258.23	213.00	209.37	+	21.23	+	23.34
008 Dry Fruits	0.2478	208.07	207.33	188.91	+	0.36	+	10.14
009 Cotton Seeds	1.1511	209.33	197.27	170.47	+	6.11	+	22.80
010 Other Oil Seeds	0.0722	172.46	183.71	168.04	-	6.12	+	2.63
011 Edible Roots / Potatoes	0.2540	400.84	288.60	120.83	+	38.89	+	231.74
012 Stimulant & Spice Crops	0.1634	371.86	355.25	193.64	+	4.68	+	92.04
013 Pulses	0.4901	190.93	191.54	190.02	-	0.32	+	0.48
014 Sugar Crops	1.0725	267.92	267.92	267.92	+	0.00	+	0.00
015 Fibre Crops	5.3169	209.71	217.76	219.37	-	3.70	-	4.40
016 Unmanufactured Tobacco	0.0742	195.81	190.00	175.97	+	3.06	+	11.27
017 Poultry	0.5633	219.86	210.42	167.35	+	4.49	+	31.38
018 Raw Milk from Bovine Animals	7.0279	230.05	226.49	212.51	+	1.57	+	8.25
019 Eggs	0.5034	173.18	246.39	163.42	-	29.71	+	5.97
020 Raw Animal Materials / Wool	0.0351	157.45	157.45	139.39	+	0.00	+	12.96
021 Hides & Fur Skins, Raw	0.4834	145.57	147.11	141.22	-	1.05	+	3.08
022 Fuel Wood in Logs	0.0179	242.38	242.82	228.51	-	0.18	+	6.07
023 Fish Live Fresh or Chilled	1.7295	244.31	244.62	209.12	-	0.13	+	16.83
Ores/Minerals, Elec., Gas & W	12.0389	243.12	243.45	213.96	-	0.14	+	13.63
024 Coal not Agglomerated	0.7508	223.53	223.53	223.53	+	0.00	+	0.00
025 Natural Gas Liquefied	5.7385	203.39	204.10	201.27	-	0.35	+	1.05
026 Salt & Pure Sodium Chloride	0.0584	231.42	231.42	195.37	+	0.00	+	18.45
027 Electrical Energy	5.4912	287.44	287.44	226.10	+	0.00	+	27.13
Food, Beverages, Tobacco, Textil	31.1122	202.07	201.93	191.67	+	0.07	+	5.43
Food Products, Beverages &	20.0718	205.82	205.40	193.47	+	0.20	+	6.38
028 Meat of Animals	3.4559	241.31	240.41	231.85	+	0.37	+	4.08
029 Vegetables & Fruit Juice	0.0058	191.62	191.62	189.33	+	0.00	+	1.21
030 Dried Fruits & Nuts	0.1733	218.45	218.74	222.72	-	0.13	-	1.92
031 Fruit Juices	0.3880	166.33	166.09	159.33	+	0.14	+	4.39
032 Vegetable Oils Refined	1.9242	164.58	164.69	159.96	-	0.07	+	2.89
033 Vegetable Ghee	1.5632	142.54	144.11	140.80	-	1.09	+	1.24
034 Oil Cakes	0.9611	207.80	198.60	164.12	+	4.63	+	26.61
035 Processed Liquid Milk	4.4437	219.13	215.66	208.43	+	1.61	+	5.13
036 Milk & Cream in Solid Form	0.0316	207.76	207.17	171.40	+	0.28	+	21.21
037 Ice Cream	0.0047	209.79	209.79	173.49	+	0.00	+	20.92
038 Dairy Products N.E.C	0.0117	228.17	223.27	211.73	+	2.19	+	7.76
039 Wheat Flour	2.3034	211.80	217.42	178.37	-	2.58	+	18.74
040 Other Cereal Flour	0.0604	140.44	138.58	173.25	+	1.34	-	18.94
041 Sugar Refined	1.7975	201.00	201.11	201.52	-	0.05	-	0.26
042 Chocolate	0.0139	99.19	99.19	99.19	+	0.00	+	0.00
043 Sugar Confectionary	0.0738	102.28	102.28	102.28	+	0.00	+	0.00
044 Coffee & Tea	0.7303	198.66	208.86	217.19	-	4.88	-	8.53
045 Spices	0.1449	191.57	191.41	251.26	+	0.08	-	23.76
046 Other Food Products	0.0336	308.98	308.40	316.35	+	0.19	-	2.33
047 Mineral Water	0.0207	184.22	183.04	170.88	+	0.64	+	7.81
048 Beverages	0.6303	161.66	155.31	137.86	+	4.09	+	17.26
049 Tobacco Products	1.2998	242.41	242.41	208.80	+	0.00	+	16.10
Textiles & Apparels	10.3289	192.99	192.57	193.04	+	0.22	-	0.03
050 Cotton Yarn	5.2491	201.07	207.32	216.90	-	3.01	-	7.30
051 Nylon Yarn	0.1719	167.97	177.75	187.63	-	5.50	-	10.48
052 Blended Yarn	0.1689	193.66	199.15	199.68	-	2.76	-	3.01
053 Woven Fabrics	0.0128	226.82	226.82	208.98	+	0.00	+	8.54
054 Cotton Fabrics	0.6343	193.10	189.65	178.26	+	1.82	+	8.32
055 Other Fabrics	1.1016	192.36	179.75	169.83	+	7.02	+	13.27

Annexure B: Wholesale Price Indices by Major Groups & Commodities

(2007-2008=100)

Item and Specification	Weight	Index Numbers			% Change in Apr 2014 over	
		Apr 14	Mar 14	Apr 13	Mar 2014	Apr 2013
056 Silk & Reyon Fabrics	0.7350	165.36	161.09	156.87	+ 2.65	+ 5.41
057 Towels	0.1235	242.19	234.25	210.01	+ 3.39	+ 15.32
058 Blankets	0.0029	219.66	219.66	185.21	+ 0.00	+ 18.60
059 Bed Sheets	0.0913	242.12	236.05	212.73	+ 2.57	+ 13.82
060 Quilts	0.0019	172.42	172.42	153.32	+ 0.00	+ 12.46
061 Woolen Carpets	0.0383	113.69	113.69	106.55	+ 0.00	+ 6.70
062 Synthetic Carpets	0.0566	116.10	116.10	114.41	+ 0.00	+ 1.48
063 Hosiery Products	0.8832	196.90	195.50	185.14	+ 0.72	+ 6.35
064 Readymade Garments	1.0576	169.94	153.12	142.83	+ 10.98	+ 18.98
Leather Products	0.7115	228.06	239.85	120.99	- 4.92	+ 88.49
065 Leather Without Hair	0.2973	203.40	209.40	109.83	- 2.87	+ 85.20
066 Other Leather N.E.C	0.2567	314.19	339.91	122.57	- 7.57	+ 156.34
067 Footwears	0.1575	134.22	134.22	139.49	+ 0.00	- 3.78
Other Transportable Goods	22.3659	213.45	217.63	205.35	- 1.92	+ 3.94
068 Timber	0.0165	178.07	174.55	152.98	+ 2.02	+ 16.40
069 Printing Paper	0.4279	177.81	176.01	168.66	+ 1.02	+ 5.43
070 Hard Board	0.1579	229.17	229.17	187.50	+ 0.00	+ 22.22
071 Coke	0.2797	163.45	163.45	163.45	+ 0.00	+ 0.00
072 Motor Spirit	1.5336	182.98	185.89	172.82	- 1.57	+ 5.88
073 Diesel Oil	5.2664	267.04	279.46	257.92	- 4.44	+ 3.54
074 Kerosine Oil	0.2151	288.01	288.01	262.00	+ 0.00	+ 9.93
075 Furnace Oil	3.2664	165.65	177.75	174.79	- 6.81	- 5.23
076 Mobil Oil	0.7114	197.73	194.41	187.49	+ 1.71	+ 5.46
077 Chemicals	1.7720	176.47	175.87	160.14	+ 0.34	+ 10.20
078 Dyeing Material	0.1539	143.77	107.55	107.23	+ 33.68	+ 34.08
079 Fertilizers	2.8657	264.50	264.50	261.31	+ 0.00	+ 1.22
080 Pesticides	0.2763	237.58	237.58	197.49	+ 0.00	+ 20.30
081 Insecticides	0.1276	177.92	136.47	123.20	+ 30.37	+ 44.42
082 Paints & Varnishes	0.1916	268.31	268.31	241.08	+ 0.00	+ 11.30
083 Medicines	1.1428	140.59	140.31	139.66	+ 0.20	+ 0.67
084 Soaps & Detergents	0.8168	181.82	181.82	170.95	+ 0.00	+ 6.36
085 Auto Tyres	0.2703	185.73	185.73	181.43	+ 0.00	+ 2.37
086 Plastic Products	0.4550	202.70	202.33	196.56	+ 0.18	+ 3.12
087 Glass sheets	0.2089	209.86	207.75	201.02	+ 1.02	+ 4.40
088 Other Glass Articles	0.1635	214.09	214.09	199.53	+ 0.00	+ 7.30
089 Ceramics & Sanitary Fixture	0.0244	199.50	194.56	161.77	+ 2.54	+ 23.32
090 Bricks, Blocks & Tiles	0.1566	197.05	195.96	180.18	+ 0.56	+ 9.36
091 Cement	1.8145	207.45	207.69	188.24	- 0.12	+ 10.21
092 Bed Foam	0.0006	149.67	149.67	142.83	+ 0.00	+ 4.79
093 Matches	0.0505	143.20	143.20	142.72	+ 0.00	+ 0.34
Metal Product, Machinery & Eq	8.7156	170.06	169.52	159.93	+ 0.32	+ 6.33
094 Pig Iron	0.0593	128.97	128.97	128.97	+ 0.00	+ 0.00
095 Steel Bar & Sheets	1.4022	138.13	138.60	133.52	- 0.34	+ 3.45
096 Pipe Fittings	0.0780	168.33	168.33	148.98	+ 0.00	+ 12.99
097 Steel Products	0.3879	170.24	170.24	166.25	+ 0.00	+ 2.40
098 Engines & Motors	0.0046	109.07	109.07	109.07	+ 0.00	+ 0.00
099 Vacuum Pumps	0.0155	115.39	115.39	115.39	+ 0.00	+ 0.00
100 Air Conditioners	0.0049	181.12	181.12	176.43	+ 0.00	+ 2.66
101 Cultivators	0.0551	226.90	226.90	189.23	+ 0.00	+ 19.91
102 Chuff Cutter	0.1293	149.20	149.20	144.94	+ 0.00	+ 2.94
103 Tractors	0.0028	214.54	193.29	161.96	+ 10.99	+ 32.46
104 Lathe Machines	0.0525	208.81	208.81	147.68	+ 0.00	+ 41.39
105 Concrete Mixture	0.0107	138.83	138.83	138.83	+ 0.00	+ 0.00
106 Fridge, WashM, SewM, Fans, Iron	1.1645	195.02	192.37	171.52	+ 1.38	+ 13.70
107 Electric Wires	0.0912	178.73	178.73	159.57	+ 0.00	+ 12.01
108 Lighting Equipments	1.4431	164.75	163.27	148.26	+ 0.91	+ 11.12
109 Radio & Television	0.1843	126.49	126.49	126.49	+ 0.00	+ 0.00
110 Motor Vehicles	0.0244	182.75	184.47	173.75	- 0.93	+ 5.18
111 Motorcycles	0.2570	126.48	126.15	125.07	+ 0.26	+ 1.13
112 Bicycles	3.3483	182.84	182.84	177.09	+ 0.00	+ 3.25