



Monthly Review on Price Indices



March, 2013
(Base 2007-08)

Government of Pakistan
Statistics Division
Pakistan Bureau of Statistics
Islamabad

I. Inflation in Brief

1. CPI inflation, General, increased by 6.6% on year-on-year basis in March 2013 as compared to 7.4% in the previous month and 10.8% in March 2012. On month-on-month basis, it increased by 0.4% in March 2013 as compared to a decrease of 0.3% in the previous month and an increase of 1.2% in March 2012.
2. Core inflation measured by non-food non-energy CPI (Core NFNE) increased by 9.0% in March 2013 as compared to 9.6% in February 2013 (YoY) and by 10.8% in March 2012. Core NFNE inflation on MoM basis increased by 0.4% in March 2013 as compared to 0.4% a month earlier and 1.0% in March 2012.
3. Core inflation, measured by 20% weighted trimmed mean CPI (Core Trimmed) increased by 8.4% in March 2013 and by 9.2% in February 2013 (YoY) which increased by 10.5% in March 2012. Core Trimmed inflation has increased by 0.2% on MoM basis in March 2013 as compared to 0.2% in February 2013 which increased by 0.8% in March 2012.
4. SPI inflation on YoY basis increased by 8.7% in March 2013 as compared with 9.4% a month earlier and 6.1% in March 2012. On MoM basis, it increased by 0.8% in March 2013 as compared to an increase of 0.1% a month earlier and 1.5% in March 2012.
5. WPI inflation on YoY basis increased to 7.9% in March 2013 compared with 8.3% a month earlier and 4.5% in March 2012. WPI inflation on MoM basis increased by 0.3% in March 2013 as compared to an increase of 0.3% a month earlier and increased by 0.7% in March 2012.
6. Figures 1 and 2 show graphically the data of Table 1. Table 1.1 shows "Period Average" and "YoY" percent changes in indices of three years.

Table 1: Inflation (%) (Base 2007-08)														
Period	CPI						Core Inflation				SPI**		WPI	
	General		Food		Non-food		NFNE*		Trimmed		YoY	MoM	YoY	MoM
	YoY	MoM	YoY	MoM	YoY	MoM	YoY	MoM	YoY	MoM				
Feb 12	11.0	0.3	10.5	-0.7	11.5	1.0	10.6	0.7	10.7	0.5	5.2	-0.1	7.2	0.6
Mar 12	10.8	1.2	9.8	1.5	11.5	0.9	10.8	1.0	10.5	0.8	6.1	1.5	4.5	0.7
Apr 12	11.3	1.8	10.7	2.2	11.6	1.6	10.8	1.4	11.0	1.3	7.5	1.7	3.8	1.8
May 12	12.3	1.1	11.3	0.2	13.1	1.9	11.1	0.8	11.7	0.5	8.1	-0.1	7.1	2.1
Jun 12	11.3	0.0	10.3	-0.2	12.0	0.2	11.4	0.7	11.1	0.5	9.7	1.4	6.4	0.0
Jul 12	9.6	-0.2	9.1	1.8	10.0	-1.7	11.3	1.0	10.7	0.7	7.7	0.5	7.2	0.4
Aug 12	9.1	0.9	8.5	0.9	9.4	0.9	10.8	0.3	10.6	0.4	8.2	1.3	7.7	1.0
Sep 12	8.8	0.8	7.6	0.7	9.7	0.9	10.4	0.4	10.4	0.5	8.0	1.2	7.8	0.3
Oct 12	7.7	0.4	5.8	-0.1	9.1	0.7	10.1	1.2	9.7	0.7	6.7	-0.4	7.5	0.1
Nov 12	6.9	-0.4	5.3	-0.3	8.1	-0.4	9.7	0.2	8.8	0.2	6.0	0.0 ¹	7.7	-0.4
Dec 12	7.9	0.2	7.7	0.0 ²	8.1	0.4	9.8	0.5	9.2	0.3	8.2	0.0 ³	9.6	0.4
Jan 13	8.1	1.7	8.1	1.9	8.1	1.5	9.9	1.2	9.9	1.0	9.2	1.9	8.6	1.2
Feb 13	7.4	-0.3	7.4	-1.3	7.4	0.3	9.6	0.4	9.2	0.2	9.4	0.1	8.3	0.3
Mar 13	6.6	0.4	6.3	0.5	6.7	0.3	9.0	0.4	8.4	0.2	8.7	0.8	7.9	0.3

*NFNE is non-food non-energy, ** SPI for quintile 1 ,
¹ Actual figure is 0.03, displayed in rounded figure
² Actual figure is 0.04, displayed in rounded figure ,
³ Actual figure is 0.05, displayed in rounded figure

Table 1.1 : Period Average and YoY % Changes of Indices (Base 2007-08)						
Index	Averages July-March % Changes			March over March % Changes		
	2012-13	2011-12	2010-11	2012-13	2011-12	2010-11
CPI	7.98	10.79	13.95	6.57	10.79	13.02
SPI	8.00	6.62	17.60	8.65	6.09	14.73
WPI	8.05	12.17	20.50	7.89	4.47	24.27

Figure 1: CPI Inflation YoY, Special Indices

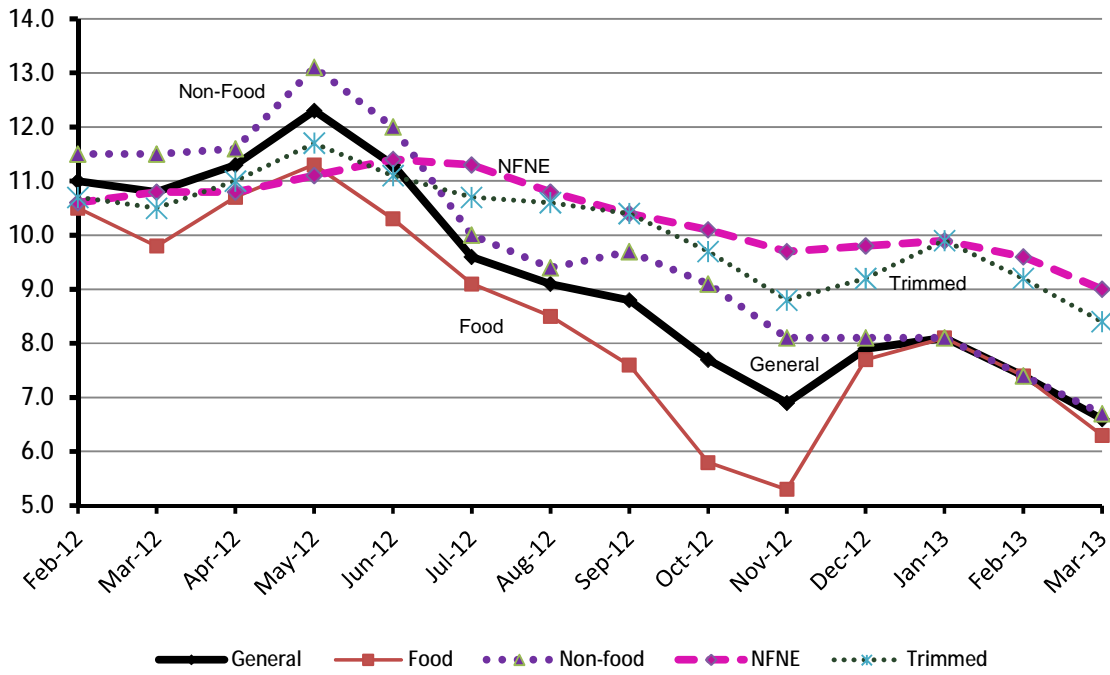
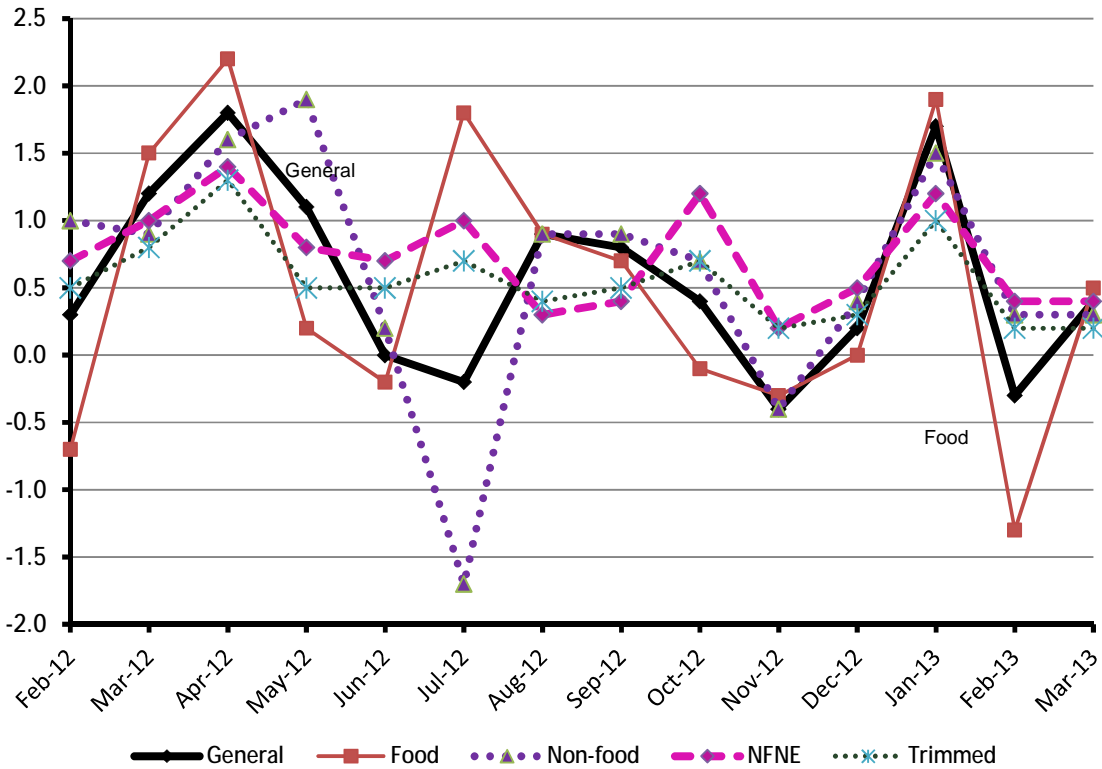


Figure 2: CPI Inflation MoM, Special Indices



II. Consumer Price Index (CPI)

The Consumer Price Index of March, 2013 has increased by 0.41% over February, 2013 and increased by 6.57% over corresponding month of last year.

Table 2 : Consumer Price Index by Group of Commodities and Services (Base 2007-08)									
No	Group	Group Weight (%)	Indices			% Change Mar 2013 over		Impact (In % points) Mar 2013 over	
			Mar 2013	Feb 2013	Mar 2012	Feb 2013	Mar 2012	Feb 2013	Mar 2012
			General	100.00	175.82	175.11	164.98	0.41	6.57
1.	Food & Non-alcoholic Bev.	34.83	194.76	193.70	183.98	0.55	5.86	0.21	2.28
	<i>Non-perishable Food Items</i>	29.84	197.57	198.29	184.44	-0.36	7.12	-0.12	2.38
	<i>Perishable Food Items</i>	4.99	177.97	166.26	181.25	7.04	-1.81	0.33	-0.10
2.	Alcoholic Bev. & Tobacco	1.41	191.16	191.17	163.53	-0.01	16.90	0.00	0.24
3.	Clothing & Footwear	7.57	179.42	178.43	159.35	0.55	12.59	0.04	0.92
4.	Housing, Water, Electricity, Gas & Fuels	29.41	152.91	152.79	147.65	0.08	3.56	0.02	0.94
5.	Furnishing & Household Equipment Maintenance	4.21	182.47	181.91	166.88	0.31	9.34	0.01	0.40
6.	Health	2.19	158.49	158.02	141.00	0.30	12.40	0.01	0.23
7.	Transport	7.20	189.11	188.35	178.37	0.40	6.02	0.03	0.47
8.	Communication	3.22	128.63	128.63	122.42	0.00	5.07	0.00	0.12
9.	Recreation & Culture	2.03	170.63	167.30	144.41	1.99	18.16	0.04	0.32
10.	Education	3.94	157.68	155.83	145.10	1.19	8.67	0.04	0.30
11.	Restaurants & Hotels	1.23	208.05	207.28	191.63	0.37	8.57	0.01	0.12
12.	Miscellaneous	2.76	202.64	202.74	188.59	-0.05	7.45	0.00	0.23

Main contributors to month-on-month and year-on-year percentage changes are given below and detail is given in Annexure A.

1. **Month-on-month** Top few commodities which varied from previous month i.e. February 2013 are given below:-

Food Items Increased: Onions (29.50%), Tomatoes (17.08%), Tea (5.44%), Eggs (4.71%), Fresh Fruits (4.18%), Beverages (2.59%), Fresh Vegetables (1.23%), Beans (0.91%), Cereals (0.78%), Nimco (0.75%), Milk Powder (0.63%), Jam, Tomatoe Ketchup & Pickles (0.58%) and Bakery & Confectionary (0.38%).

Decreased: Chicken (12.04%), Spices (6.11%), Pulse Gram (5.99%), Besan (4.67%), Gram Whole (4.60%), Potatoes (2.48%), Fish (1.73%), Gur (0.76%), Pulse Masoor (0.50%), Cooking Oil (0.36%), Wheat Flour (0.32%), Betal Leaves & Nuts (0.26%), Pulse Mash and Vegetable Ghee (0.14% each).

Non-food Items Increased: Newspaper (8.19%), Text Books (3.18%), Water supply charges (2.88%), Transport Services (1.49%), Education (1.19%), Construction Input items (1.11%), Cleaning & Laundry (0.97%), Cotton Cloth (0.95%), Tailoring (0.94%), Furniture (0.86%) and Readymade Garments (0.82%).

Decreased: Personal Equipments (1.17%), Motor Fuel (0.64%) and Woolen Readymade Garments (0.46%).

2. **Year-on-year:** Top few commodities which varied from previous year i.e. March 2012 are given below:-

Food Items Increased: Tomatoes (100.22%), Wheat (22.89%), Wheat Flour (19.31%), Honey (18.57%), Rice (17.30%), Cigarettes (17.11%), Wheat Products (15.67%), Tea (14.31%), Milk Powder (13.55%), Beans (12.47%), Onions (11.33%), Potatoes (10.66%) and Milk Fresh (10.62%).

Decreased: Spices (18.03%), Fresh Fruits (12.99%), Fresh Vegetables (11.86%), Chicken (11.50%), Pulse Mash (8.28%), Pulse Moong (7.68%), Sugar (6.21%), Gram Whole (5.57%), Vegetable Ghee (1.51%), Pulse Masoor (0.92%) and Eggs (0.88%).

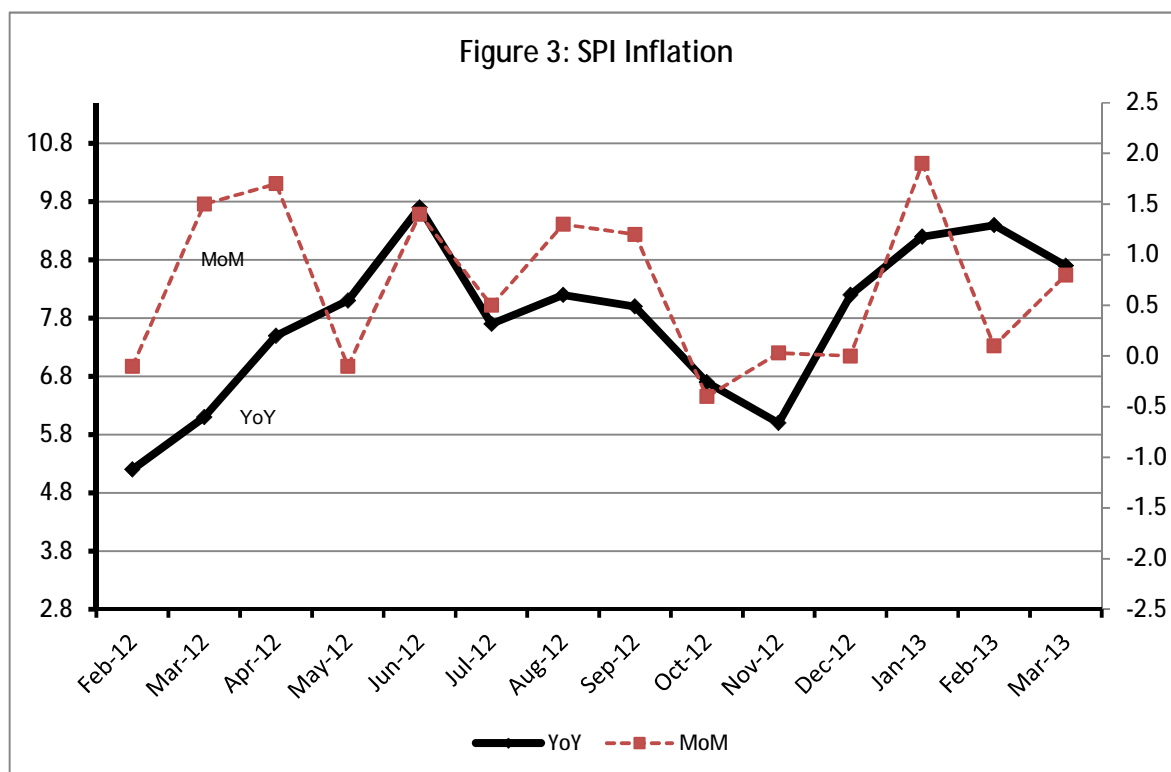
Non-food Items Increased: Text Books (44.71%), Woolen Readymade Garments (19.97%), Cleaning & Laundry (17.99%), Dopatta (17.48%), Electricity (16.39%), Doctor (MBBS) Clinic Fee (15.06%), Tailoring (14.62%), Readymade Garments (14.56%), Newspaper (13.68%) and Hosiery (13.34%).

Decreased: Gas (46.08%).

III. Sensitive Price Indicator

Quintile-wise percentage changes YoY and MoM are given below in Table 3. The series from February 2012 to March 2013 is also graphed below in Figure 3.

Table 3 : Sensitive Price Indicator (Base 2007-08)					
Quintiles	Indices			% Change Mar 2013 over	
	Mar 2013	Feb 2013	Mar 2012	Feb 2013	Mar 2012
1	186.98	185.53	172.09	0.78	8.65
2	192.97	191.63	175.25	0.70	10.11
3	191.50	190.18	174.92	0.69	9.48
4	192.74	191.51	183.33	0.64	5.13
5	193.02	191.94	188.73	0.56	2.27
Combined	192.01	190.79	180.79	0.64	6.21



IV. Wholesale Price Index

The Wholesale Price Index for March 2013 increased by 0.26% over February 2013. It increased by 7.89% over the corresponding month of the last year. YoY and MoM movements, from February 2012 to March 2013 are also graphed below in Figure 4.

Table 4 : Wholesale Price Index by Group of Commodities (Base 2007-08)

No.	Group	Group Weight (%)	Indices			% Change March 2013 over		Impact (in %age points) Mar 2013 over	
			Mar 2013	Feb 2013	Mar 2012	Feb 2013	Mar 2012	Feb 2013	Mar 2012
	General	100.00	196.57	196.06	182.20	0.26	7.89	0.26	7.89
1.	Agriculture, Forestry & Fishery Products	25.77	199.84	198.37	178.44	0.74	11.99	0.19	3.03
2.	Ores & Minerals, Electricity, Gas & Water	12.04	214.54	215.52	188.10	-0.45	14.06	-0.06	1.75
3.	Food Products, Beverages & Tobacco, Textiles, Apparel & Leather Products	31.11	190.65	190.68	174.81	-0.02	9.06	-0.01	2.70
	i. Food Products, Bev. & Tobacco	20.07	193.18	193.05	179.15	0.07	7.83	0.01	1.55
	ii. Textiles and Apparel	10.33	190.53	190.87	170.31	-0.18	11.87	-0.02	1.15
	iii. Leather Products	0.71	120.99	120.99	117.68	0.00	2.81	0.00	0.01
4.	Other Transportable Goods except Metal Products, Machinery & Equipments	22.37	206.04	204.80	204.15	0.61	0.93	0.14	0.23
5.	Metal Products, Machinery & Equipments	8.72	158.87	159.08	155.23	-0.13	2.34	-0.01	0.17

Main contributors to month-on-month and year-on-year percentage changes are given below and detail is given in Annexure B.

1. **Month-on-month** Top few commodities which varied from previous month i.e. February 2013 are given below:-

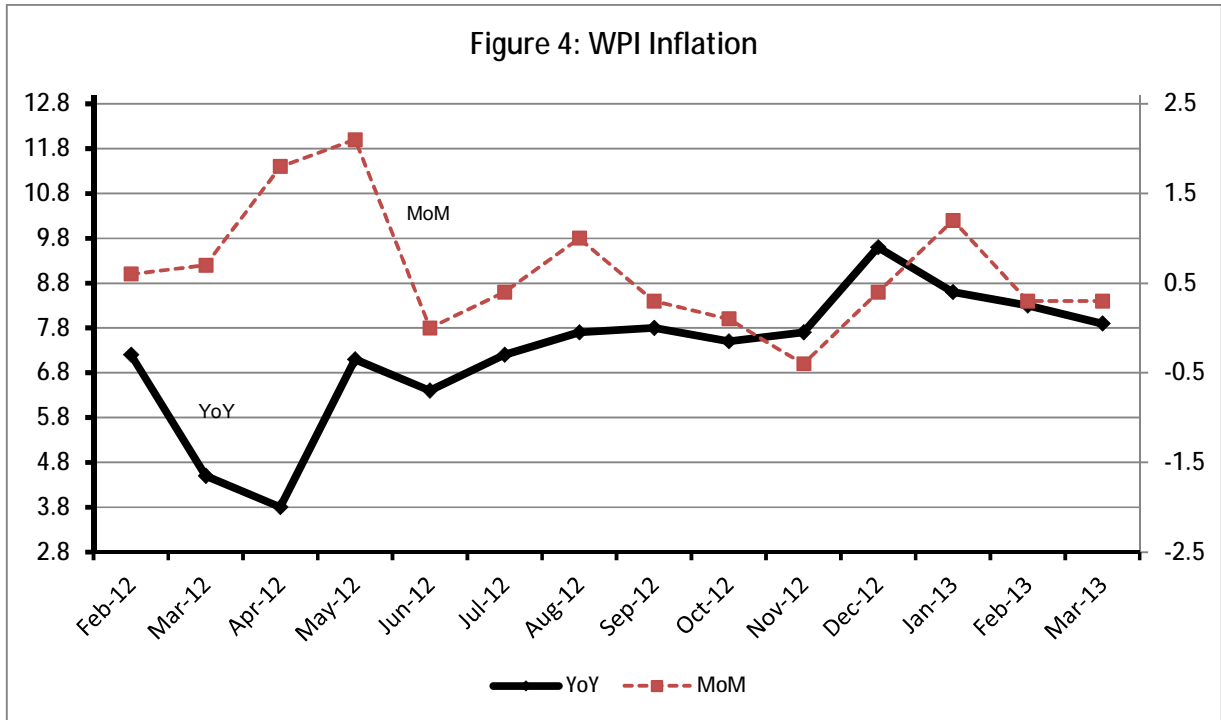
Increased: Eggs (15.93%), Salt and Pure Sodium Chloride (9.98%), Fibre Crops (8.33%), Jowar (6.55%), Furnace Oil (5.56%), Coffee and Tea (5.32%), Chuff Cutter (4.62%), Fish (4.22%), Vegetables (3.19%) and Bajra (3.00%).

Decreased: Poultry (18.41%), Edible roots/potatoes (9.66%), other cereal Flour (7.67%), Pulses (5.30%), Raw Milk (3.58%), other Oil Seeds (3.19%), Hard Board (2.88%), Fresh Fruits (2.50%), Spices (2.47%) and Wheat Flour (2.07%).

2. **Year-on-year** Top few commodities which varied from previous year i.e. March, 2012 are given below:-

Increased: Electrical Energy (36.10%), Fresh Fruits (32.98%), Coal not Agglomerated (29.55%), Fish (28.66%), Fibre crops (26.25%), Printing Paper (24.93%), Tobacco Products (23.26%), Wheat (22.63%), Paints & Varnishes (22.00%) and Woven Fabrics (21.87%).

Decreased: Synthetic Carpets (20.59%), Furnace Oil (19.28%), Poultry (18.56%), Pulses (14.09%), Spices (11.92%), Vegetables (9.05%), other Glass Articles (6.45%), Cotton Seeds (6.08%), Tractors (6.03%) and Nylon Yarn (5.30%).



Annexure A: Consumer Price Index Numbers by Commodity Groups & Commodities (2007-2008=100)

Item and Specification	Weight	Index Numbers			% Change in Mar 2013 over	
		Mar 13	Feb 13	Mar 12	Feb 2013	Mar 2012
General	100.0000	175.82	175.11	164.98	+ 0.41	+ 6.57
Food & Non-alcoholic Beverage	34.8343	194.76	193.70	183.98	+ 0.55	+ 5.86
01 Wheat	0.3477	200.08	199.50	162.81	+ 0.29	+ 22.89
02 Wheat Flour	4.1648	199.68	200.33	167.36	- 0.32	+ 19.31
03 Wheat Product	0.0959	189.66	189.40	163.97	+ 0.14	+ 15.67
04 Besan	0.1500	225.29	236.32	205.06	- 4.67	+ 9.87
05 Rice	1.5821	182.08	181.58	155.23	+ 0.28	+ 17.30
06 Cereals	0.1563	212.48	210.83	192.75	+ 0.78	+ 10.24
07 Bakery & Confectionary	1.1550	180.71	180.03	165.69	+ 0.38	+ 9.07
08 Nimco	0.4574	201.85	200.35	187.51	+ 0.75	+ 7.65
09 Meat	2.4303	220.01	219.73	210.69	+ 0.13	+ 4.42
10 Chicken	1.3596	159.82	181.69	180.59	- 12.04	- 11.50
11 Fish	0.2970	199.17	202.68	196.38	- 1.73	+ 1.42
12 Milk Fresh	6.6800	220.22	219.54	199.07	+ 0.31	+ 10.62
13 Milk Products	0.6338	211.92	211.29	196.59	+ 0.30	+ 7.80
14 Milk Powder	0.1129	186.98	185.81	164.67	+ 0.63	+ 13.55
15 Eggs	0.4555	188.87	180.37	190.55	+ 4.71	- 0.88
16 Mustard Oil	0.0952	162.55	162.48	156.73	+ 0.04	+ 3.71
17 Cooking Oil	1.7538	161.13	161.71	148.95	- 0.36	+ 8.18
18 Vegetable Ghee	2.0714	157.29	157.51	159.70	- 0.14	- 1.51
19 Dry Fruits	0.2543	213.13	212.97	196.60	+ 0.08	+ 8.41
20 Fresh Fruits	1.8649	181.99	174.69	209.17	+ 4.18	- 12.99
21 Pulse Masoor	0.2712	145.84	146.58	147.20	- 0.50	- 0.92
22 Pulse Moong	0.2336	221.64	221.94	240.08	- 0.14	- 7.68
23 Pulse Mash (Washed)	0.2098	190.74	191.01	207.96	- 0.14	- 8.28
24 Pulse Gram	0.2361	217.25	231.09	215.44	- 5.99	+ 0.84
25 Gram Whole	0.1616	212.21	222.44	224.72	- 4.60	- 5.57
26 Beans	0.0269	217.96	216.00	193.79	+ 0.91	+ 12.47
27 Potatoes	0.4914	140.07	143.63	126.58	- 2.48	+ 10.66
28 Onion	0.5555	226.51	174.91	203.45	+ 29.50	+ 11.33
29 Tomatoes	0.4634	212.43	181.44	106.10	+ 17.08	+ <u>100.2</u>
30 Fresh Vegetables	1.6157	158.27	156.35	179.57	+ 1.23	- 11.86
31 Sugar	1.0445	188.76	188.87	201.25	- 0.06	- 6.21
32 Gur	0.0220	218.79	220.47	217.68	- 0.76	+ 0.51
33 Honey	0.0446	256.26	256.16	216.13	+ 0.04	+ 18.57
34 SweetMeat	0.2483	208.42	207.84	199.50	+ 0.28	+ 4.47
35 Beverages	1.1990	174.11	169.72	160.08	+ 2.59	+ 8.76
36 Jam, Tomato Ketchup & Pickles	0.2454	181.88	180.84	171.27	+ 0.58	+ 6.19
37 Condiments	0.2656	215.06	214.80	209.35	+ 0.12	+ 2.73
38 Spices	0.5441	226.61	241.36	276.44	- 6.11	- 18.03
39 Tea	0.8377	235.31	223.16	205.86	+ 5.44	+ 14.31
Alcoholic Beverages, Tobacco	1.4135	191.16	191.17	163.53	- 0.01	+ 16.90
40 Cigarettes	1.3906	191.31	191.31	163.36	+ 0.00	+ 17.11
41 Betel Leaves & Nuts	0.0229	182.09	182.57	173.78	- 0.26	+ 4.78
Clothing & Footwear	7.5708	179.42	178.43	159.35	+ 0.55	+ 12.59
42 Cotton Cloth	1.7286	165.16	163.61	147.42	+ 0.95	+ 12.03
43 Woolen Cloth	0.8759	201.30	200.18	179.75	+ 0.56	+ 11.99
44 Readymade Garments	0.9739	178.55	177.09	155.86	+ 0.82	+ 14.56
45 Woolen Readymade Garments	0.3964	192.57	193.46	160.51	- 0.46	+ 19.97
46 Hosiery	0.5094	189.51	189.09	167.21	+ 0.22	+ 13.34
47 Dopatta	0.4412	197.36	196.66	168.00	+ 0.36	+ 17.48
48 Cleaning and Laundry	0.2110	200.53	198.61	169.96	+ 0.97	+ 17.99
49 Tailoring	0.8840	213.30	211.32	186.09	+ 0.94	+ 14.62
50 Footwear	1.5504	149.55	149.45	141.30	+ 0.07	+ 5.84

+

Annexure A: Consumer Price Index Numbers by Commodity Groups & Commodities (2007-2008=100)

Item and Specification	Weight	Index Numbers			% Change in Mar 2013 over	
		Mar 13	Feb 13	Mar 12	Feb 2013	Mar 2012
<i>Housing, Water, Elec., Gas, Other</i>	29.4149	152.91	152.79	147.65	+ 0.08	+ 3.56
51 House Rent	21.8149	142.46	142.46	133.31	+ 0.00	+ 6.86
52 Construction Input Items	0.5623	206.83	204.56	189.81	+ 1.11	+ 8.97
53 Construction Wage Rates	0.3331	176.59	175.62	158.78	+ 0.55	+ 11.22
54 Water Supply	0.4971	138.79	134.90	131.65	+ 2.88	+ 5.42
55 Electricity	4.3985	196.37	196.37	168.71	+ 0.00	+ 16.39
56 Gas	1.5756	142.58	142.58	264.42	+ 0.00	- 46.08
57 Kerosene Oil	0.0057	277.05	276.25	257.14	+ 0.29	+ 7.74
58 Firewood Whole	0.2277	246.28	246.28	219.01	+ 0.00	+ 12.45
<i>Furnished H.Hold Equip.& Hous</i>	4.2082	182.47	181.91	166.88	+ 0.31	+ 9.34
59 Furniture	0.3315	173.02	171.54	158.53	+ 0.86	+ 9.14
60 Household Textiles	0.6489	178.21	177.68	163.28	+ 0.30	+ 9.14
61 Household Equipment	0.5936	159.14	158.68	151.30	+ 0.29	+ 5.18
62 Utensils	0.3212	179.78	179.02	159.27	+ 0.42	+ 12.88
63 Plastic Products	0.2547	177.87	177.32	168.44	+ 0.31	+ 5.60
64 Washing Soaps & Detergents	0.7893	198.55	197.96	182.05	+ 0.30	+ 9.06
65 Sewing Needle & Dr Cell	0.1496	152.41	152.30	142.02	+ 0.07	+ 7.32
66 Household Servant	1.0432	194.63	194.31	173.93	+ 0.16	+ 11.90
67 Marriage Hall Charges	0.0762	194.52	193.63	177.26	+ 0.46	+ 9.74
<i>Health</i>	2.1868	158.49	158.02	141.00	+ 0.30	+ 12.40
68 Drugs & Medicines	1.2667	140.18	139.74	125.72	+ 0.31	+ 11.50
69 Medical Equipments	0.0080	201.89	201.48	178.64	+ 0.20	+ 13.02
70 Doctor (MBBS) Clinic Fee	0.5904	196.98	196.28	171.20	+ 0.36	+ 15.06
71 Medical Tests	0.3217	158.83	158.67	144.84	+ 0.10	+ 9.66
<i>Transport</i>	7.2023	189.11	188.35	178.37	+ 0.40	+ 6.02
72 Motor Vehicles	0.6630	155.51	154.73	144.33	+ 0.50	+ 7.75
73 Motor Vehicle Accessories	0.2439	212.43	212.30	198.01	+ 0.06	+ 7.28
74 Motor Fuel	3.0269	182.54	183.71	180.88	- 0.64	+ 0.92
75 Mechanical Service	0.4552	186.18	185.37	173.42	+ 0.44	+ 7.36
76 Motor Vehicle Tax	0.1099	153.74	153.74	152.02	+ 0.00	+ 1.13
77 Transport Services	2.7034	204.54	201.53	184.06	+ 1.49	+ 11.13
<i>Communication</i>	3.2198	128.63	128.63	122.42	+ 0.00	+ 5.07
78 Postal Services	0.0662	174.59	174.59	167.63	+ 0.00	+ 4.15
79 Communication & Apparatus	3.1536	127.66	127.66	121.48	+ 0.00	+ 5.09
<i>Recreation & Culture</i>	2.0227	170.63	167.30	144.41	+ 1.99	+ 18.16
80 Recreation & Culture	0.8634	122.28	122.45	119.99	- 0.14	+ 1.91
81 Text Books	0.5706	238.40	231.05	164.74	+ 3.18	+ 44.71
82 Newspapers	0.1934	170.49	157.59	149.97	+ 8.19	+ 13.68
83 Stationery	0.3953	178.51	178.01	165.69	+ 0.28	+ 7.74
<i>Education</i>	3.9431	157.68	155.83	145.10	+ 1.19	+ 8.67
84 Education	3.9431	157.68	155.83	145.10	+ 1.19	+ 8.67
<i>Restaurants & Hotels</i>	1.2286	208.05	207.28	191.63	+ 0.37	+ 8.57
85 Readymade Food	1.2286	208.05	207.28	191.63	+ 0.37	+ 8.57
<i>Miscellaneous Goods & Service</i>	2.7550	202.64	202.74	188.59	- 0.05	+ 7.45
86 Personal Care	1.4935	182.97	181.67	169.03	+ 0.72	+ 8.25
87 Cosmetics	0.3853	150.40	149.40	145.76	+ 0.67	+ 3.18
88 Blades	0.0322	174.26	174.21	166.54	+ 0.03	+ 4.64
89 Personal Equipments	0.8440	262.37	265.47	243.60	- 1.17	+ 7.71

Annexure B: Wholesale Price Indices by Major Groups & Commodities (2007-2008=100)

Item and Specification	Weight	Index Numbers			% Change in Mar 2013 over	
		Mar 13	Feb 13	Mar 12	Feb 2013	Mar 2012
General	100.0000	196.57	196.06	182.20	+ 0.26	+ 7.89
Agriculture Forestry & Fisher	25.7674	199.84	198.37	178.44	+ 0.74	+ 11.99
001 Wheat	0.6297	207.41	207.60	169.14	- 0.09	+ 22.63
002 Maize	0.6764	182.35	178.29	162.14	+ 2.28	+ 12.46
003 Rice	2.4413	167.72	165.57	148.82	+ 1.30	+ 12.70
004 Sorghum/Jowar	0.0214	223.15	209.43	211.70	+ 6.55	+ 5.41
005 Millet/Bajra	0.0374	175.35	170.25	156.94	+ 3.00	+ 11.73
006 Vegetables	1.2441	170.90	165.61	187.90	+ 3.19	- 9.05
007 Fresh Fruits	1.5144	205.38	210.65	154.45	- 2.50	+ 32.98
008 Dry Fruits	0.2478	184.10	185.34	175.59	- 0.67	+ 4.85
009 Cotton Seeds	1.1511	166.12	166.82	176.87	- 0.42	- 6.08
010 Other Oil Seeds	0.0722	172.68	178.37	163.21	- 3.19	+ 5.80
011 Edible Roots/Potatoes	0.2540	125.42	138.83	123.27	- 9.66	+ 1.74
012 Stimulant and Spice Crops	0.1634	188.95	188.76	174.14	+ 0.10	+ 8.50
013 Pulses	0.4901	193.65	204.49	225.40	- 5.30	- 14.09
014 Sugar Crops	1.0725	267.92	267.92	272.71	+ 0.00	- 1.76
015 Fibre Crops	5.3169	215.82	199.23	170.95	+ 8.33	+ 26.25
016 Unmanufactured Tobacco	0.0742	175.15	174.04	167.22	+ 0.64	+ 4.74
017 Poultry	0.5633	153.47	188.11	188.45	- 18.41	- 18.56
018 Raw Milk from Bovine Animals	7.0279	212.51	220.40	192.38	- 3.58	+ 10.46
019 Eggs	0.5034	195.37	168.53	196.73	+ 15.93	- 0.69
020 Raw Animal Materials/Wool	0.0351	137.58	137.58	135.15	+ 0.00	+ 1.80
021 Hides and Fur Skins, Raw	0.4834	140.54	139.48	137.83	+ 0.76	+ 1.97
022 Fuel Wood in Logs	0.0179	220.21	219.44	200.22	+ 0.35	+ 9.98
023 Fish Live Fresh or Chilled	1.7295	197.25	189.26	153.31	+ 4.22	+ 28.66
Ores/Minerals, Elec., Gas & W	12.0389	214.54	215.52	188.10	- 0.45	+ 14.06
024 Coal not Agglomerated	0.7508	223.53	223.53	172.55	+ 0.00	+ 29.55
025 Natural Gas Liquified	5.7385	202.57	204.82	211.43	- 1.10	- 4.19
026 Salt and Pure Sodium Chloride	0.0584	187.29	170.30	161.56	+ 9.98	+ 15.93
027 Electrical Energy	5.4912	226.10	226.10	166.13	+ 0.00	+ 36.10
Food, Beverages, Tobacco, Textil	31.1122	190.65	190.68	174.81	- 0.02	+ 9.06
Food Products, Beverages &	20.0718	193.18	193.05	179.15	+ 0.07	+ 7.83
028 Meat of Animals	3.4559	230.45	229.40	222.31	+ 0.46	+ 3.66
029 Vegetables and Fruit Juice	0.0058	189.33	189.33	176.97	+ 0.00	+ 6.98
030 Dried Fruits and Nuts	0.1733	222.50	224.68	199.39	- 0.97	+ 11.59
031 Fruit Juices	0.3880	158.79	158.79	155.41	+ 0.00	+ 2.17
032 Vegetable Oils Refined	1.9242	159.62	160.11	152.59	- 0.31	+ 4.61
033 Vegetable Ghee	1.5632	140.73	141.86	141.42	- 0.80	- 0.49
034 Oil Cakes	0.9611	164.73	163.45	136.93	+ 0.78	+ 20.30
035 Processed Liquid Milk	4.4437	208.43	208.43	185.56	+ 0.00	+ 12.32
036 Milk and Cream in Solid Form	0.0316	171.22	171.59	165.25	- 0.22	+ 3.61
037 Ice Cream	0.0047	173.49	173.49	154.89	+ 0.00	+ 12.01
038 Dairy Products N.E.C	0.0117	210.68	206.31	194.44	+ 2.12	+ 8.35
039 Wheat Flour	2.3034	182.24	186.10	153.85	- 2.07	+ 18.45
040 Other Cereal Flour	0.0604	183.27	198.50	184.58	- 7.67	- 0.71
041 Sugar Refined	1.7975	196.65	194.64	207.29	+ 1.03	- 5.13
042 Chocolate	0.0139	99.19	99.19	100.26	+ 0.00	- 1.07
043 Sugar Confectionary	0.0738	102.28	102.28	100.40	+ 0.00	+ 1.87
044 Coffee and Tea	0.7303	212.31	201.59	194.82	+ 5.32	+ 8.98
045 Spices	0.1449	266.67	273.41	302.75	- 2.47	- 11.92
046 Other Food Products	0.0336	319.06	318.46	320.25	+ 0.19	- 0.37
047 Mineral Water	0.0207	168.32	168.32	165.82	+ 0.00	+ 1.51
048 Beverages	0.6303	137.86	137.86	135.24	+ 0.00	+ 1.94
049 Tobacco Products	1.2998	208.80	208.80	169.40	+ 0.00	+ 23.26
Textiles & Apparels	10.3289	190.53	190.87	170.31	- 0.18	+ 11.87
050 Cotton Yarn	5.2491	215.58	216.35	185.82	- 0.36	+ 16.02
051 Nylon Yarn	0.1719	185.28	183.22	195.64	+ 1.12	- 5.30
052 Blended Yarn	0.1689	199.23	199.23	183.03	+ 0.00	+ 8.85
053 Woven Fabrics	0.0128	208.98	206.00	171.48	+ 1.45	+ 21.87
054 Cotton Fabrics	0.6343	174.17	174.17	172.66	+ 0.00	+ 0.87
055 Other Fabrics	1.1016	165.62	165.62	159.00	+ 0.00	+ 4.16
056 Silk and Reyon Fabrics	0.7350	154.21	154.21	140.05	+ 0.00	+ 10.11

Annexure B: Wholesale Price Indices by Major Groups & Commodities (2007-2008=100)

Item and Specification	Weight	Index Numbers			% Change in Mar 2013 over	
		Mar 13	Feb 13	Mar 12	Feb 2013	Mar 2012
057 Towels	0.1235	203.06	203.06	187.20	+ 0.00	+ 8.47
058 Blankets	0.0029	185.21	185.21	160.41	+ 0.00	+ 15.46
059 Bed Sheets	0.0913	208.11	207.04	171.73	+ 0.52	+ 21.18
060 Quilts	0.0019	153.32	153.32	147.05	+ 0.00	+ 4.26
061 Woolen Carpets	0.0383	106.55	106.55	103.57	+ 0.00	+ 2.88
062 Synthetic Carpets	0.0566	114.41	114.41	144.07	+ 0.00	- 20.59
063 Hosiery Products	0.8832	181.47	181.47	161.85	+ 0.00	+ 12.12
064 Readymade Garments	1.0576	138.19	138.19	127.38	+ 0.00	+ 8.49
Leather Products	0.7115	120.99	120.99	117.68	+ 0.00	+ 2.81
065 Leather without Hair	0.2973	109.83	109.83	109.21	+ 0.00	+ 0.57
066 Other Leather N.E.C	0.2567	122.57	122.57	120.85	+ 0.00	+ 1.42
067 Footwears	0.1575	139.49	139.49	128.50	+ 0.00	+ 8.55
Other Transportable Goods	22.3659	206.04	204.80	204.15	+ 0.61	+ 0.93
068 Timber	0.0165	152.79	148.59	142.25	+ 2.83	+ 7.41
069 Printing Paper	0.4279	166.52	161.68	133.29	+ 2.99	+ 24.93
070 Hard Board	0.1579	187.50	193.06	158.33	- 2.88	+ 18.42
071 Coke	0.2797	163.45	163.45	163.45	+ 0.00	+ 0.00
072 Motor Spirit	1.5336	172.73	172.73	164.98	+ 0.00	+ 4.70
073 Diesel Oil	5.2664	261.36	261.36	252.97	+ 0.00	+ 3.32
074 Kerosine Oil	0.2151	264.94	264.94	257.04	+ 0.00	+ 3.07
075 Furnace Oil	3.2664	178.20	168.81	220.76	+ 5.56	- 19.28
076 Mobil Oil	0.7114	187.12	184.85	174.32	+ 1.23	+ 7.34
077 Chemicals	1.7720	156.83	157.85	147.80	- 0.65	+ 6.11
078 Dyeing Material	0.1539	107.23	106.24	104.26	+ 0.93	+ 2.85
079 Fertilizers	2.8657	261.17	263.38	269.47	- 0.84	- 3.08
080 Pesticides	0.2763	197.49	197.49	165.36	+ 0.00	+ 19.43
081 Insecticides	0.1276	122.97	120.46	123.86	+ 2.08	- 0.72
082 Paints and Varnishes	0.1916	236.93	238.30	194.20	- 0.57	+ 22.00
083 Medicines	1.1428	139.93	139.32	118.66	+ 0.44	+ 17.93
084 Soaps and Detergents	0.8168	168.46	168.27	154.60	+ 0.11	+ 8.97
085 Auto Tyres	0.2703	181.47	180.99	173.93	+ 0.27	+ 4.34
086 Plastic Products	0.4550	192.40	192.40	184.69	+ 0.00	+ 4.17
087 Glass sheets	0.2089	192.74	192.74	170.73	+ 0.00	+ 12.89
088 Other Glass Articles	0.1635	198.72	197.87	212.43	+ 0.43	- 6.45
089 Ceramics and Sanitary Fixture	0.0244	161.77	160.55	143.14	+ 0.76	+ 13.02
090 Bricks, Blocks and Tiles	0.1566	177.53	177.53	170.80	+ 0.00	+ 3.94
091 Cement	1.8145	188.35	187.79	166.23	+ 0.30	+ 13.31
092 Bed Foam	0.0006	142.83	142.83	130.50	+ 0.00	+ 9.45
093 Matches	0.0505	133.50	133.50	120.39	+ 0.00	+ 10.89
Metal Product, Machinery & Eq	8.7156	158.87	159.08	155.23	- 0.13	+ 2.34
094 Pig Iron	0.0593	128.97	128.97	128.97	+ 0.00	+ 0.00
095 Steel Bar and Sheets	1.4022	132.16	132.81	132.76	- 0.49	- 0.45
096 Pipe Fittings	0.0780	141.71	141.47	141.83	+ 0.17	- 0.08
097 Steel Products	0.3879	161.94	161.94	158.45	+ 0.00	+ 2.20
098 Engines and Motors	0.0046	109.07	109.07	109.07	+ 0.00	+ 0.00
099 Vacuum Pumps	0.0155	115.39	115.39	115.39	+ 0.00	+ 0.00
100 Air Conditioners	0.0049	172.67	172.67	166.10	+ 0.00	+ 3.96
101 Cultivators	0.0551	189.23	189.23	184.66	+ 0.00	+ 2.47
102 Chuff Cutter	0.1293	144.94	138.54	131.08	+ 4.62	+ 10.57
103 Tractors	0.0028	161.96	161.96	172.36	+ 0.00	- 6.03
104 Lathe Machines	0.0525	147.68	147.68	147.68	+ 0.00	+ 0.00
105 Concrete Mixture	0.0107	138.83	138.83	138.83	+ 0.00	+ 0.00
106 Fridge, WashM, Sew M, Fans, Iron	1.1645	167.15	166.47	163.54	+ 0.41	+ 2.21
107 Electrce Wires	0.0912	159.57	159.57	163.78	+ 0.00	- 2.57
108 Lighting Equipments	1.4431	148.26	148.26	143.66	+ 0.00	+ 3.20
109 Radio and Television	0.1843	126.49	126.46	131.06	+ 0.02	- 3.49
110 Motor Vehicles	0.0244	173.75	173.75	157.68	+ 0.00	+ 10.19
111 Motorcycles	0.2570	125.07	125.07	123.29	+ 0.00	+ 1.44
112 Bicycles	3.3483	177.09	177.87	171.52	- 0.44	+ 3.25