



Monthly Review on Price Indices



July, 2013
(Base 2007-08)

Government of Pakistan
Statistics Division
Pakistan Bureau of Statistics
Islamabad

I. Inflation in Brief

1. CPI inflation, General, increased by 8.3% on year-on-year basis in July 2013 as compared to 5.9% in the previous month and 9.6% in July 2012. On month-on-month basis, it increased by 2.0% in July 2013 as compared to 0.7% in the previous month and a decrease of 0.2% in July 2012.
2. Core inflation measured by non-food non-energy CPI (Core NFNE) increased by 8.2% in July 2013 as compared to 7.8% in June 2013 (YoY) and by 11.3% in July 2012. Core NFNE inflation on MoM basis increased by 1.5% in July 2013 as compared to 0.4% a month earlier and 1.0% in July 2012.
3. Core inflation, measured by 20% weighted trimmed mean CPI (Core Trimmed) increased by 7.8% in July 2013 and by 6.8% in June 2013 (YoY) which increased by 10.7% in July 2012. Core Trimmed inflation has increased by 1.2% on MoM basis in July 2013 as compared to 0.6% in June 2013 which increased by 0.7% in July 2012.
4. SPI inflation on YoY basis increased by 9.8% in July 2013 as compared with 7.9% a month earlier and 7.7% in July 2012. On MoM basis, it increased by 2.3% in July 2013 as compared to an increase of 2.5% a month earlier and 0.5% in July 2012.
5. WPI inflation on YoY basis increased to 6.5% in July 2013 compared with 5.2% a month earlier and 7.2% in July 2012. WPI inflation on MoM basis increased by 1.6% in July 2013 as compared to an increase of 1.0% a month earlier and 0.4% in July 2012.
6. Figures 1 and 2 show graphically the data of Table 1. Table 1.1 shows "Period Average" and "YoY" percent changes in indices of three years.

Table 1: Inflation (%) (Base 2007-08)

Period	CPI						Core Inflation				SPI**		WPI	
	General		Food		Non-food		NFNE*		Trimmed		YoY	MoM	YoY	MoM
	YoY	MoM	YoY	MoM	YoY	MoM	YoY	MoM	YoY	MoM				
Jun 12	11.3	0.0	10.3	-0.2	12.0	0.2	11.4	0.7	11.1	0.5	9.7	1.4	6.4	0.0
Jul 12	9.6	-0.2	9.1	1.8	10.0	-1.7	11.3	1.0	10.7	0.7	7.7	0.5	7.2	0.4
Aug 12	9.1	0.9	8.5	0.9	9.4	0.9	10.8	0.3	10.6	0.4	8.2	1.3	7.7	1.0
Sep 12	8.8	0.8	7.6	0.7	9.7	0.9	10.4	0.4	10.4	0.5	8.0	1.2	7.8	0.3
Oct 12	7.7	0.4	5.8	-0.1	9.1	0.7	10.1	1.2	9.7	0.7	6.7	-0.4	7.5	0.1
Nov 12	6.9	-0.4	5.3	-0.3	8.1	-0.4	9.7	0.2	8.8	0.2	6.0	0.0	7.7	-0.4
Dec 12	7.9	0.2	7.7	0.0	8.1	0.4	9.8	0.5	9.2	0.3	8.2	0.0	9.6	0.4
Jan 13	8.1	1.7	8.1	1.9	8.1	1.5	9.9	1.2	9.9	1.0	9.2	1.9	8.6	1.2
Feb 13	7.4	-0.3	7.4	-1.3	7.4	0.3	9.6	0.4	9.2	0.2	9.4	0.1	8.3	0.3
Mar 13	6.6	0.4	6.3	0.5	6.7	0.3	9.0	0.4	8.4	0.2	8.7	0.8	7.9	0.3
Apr 13	5.8	1.1	5.5	1.4	6.0	0.9	8.7	1.1	7.6	0.7	6.6	-0.3	6.8	0.8
May 13	5.1	0.5	6.5	1.1	4.1	0.1	8.1	0.3	6.7	0.3	6.8	0.1	4.1	-0.4
Jun 13	5.9	0.7	7.9	1.1	4.4	0.5	7.8	0.4	6.8	0.6	7.9	2.5	5.2	1.0
Jul 13	8.3	2.0	9.2	3.0	7.6	1.3	8.2	1.5	7.8	1.2	9.8	2.3	6.5	1.6

*NFNE is non-food non-energy,

** SPI for quintile 1

Table 1.1 : YoY % Changes of Indices (Base 2007-08)

Index	July over July % Changes		
	2013-14	2012-13	2011-12
CPI	8.26	9.60	12.43
SPI	9.80	7.67	13.14
WPI	6.55	7.22	20.27

Figure 1: CPI Inflation YoY, Special Indices

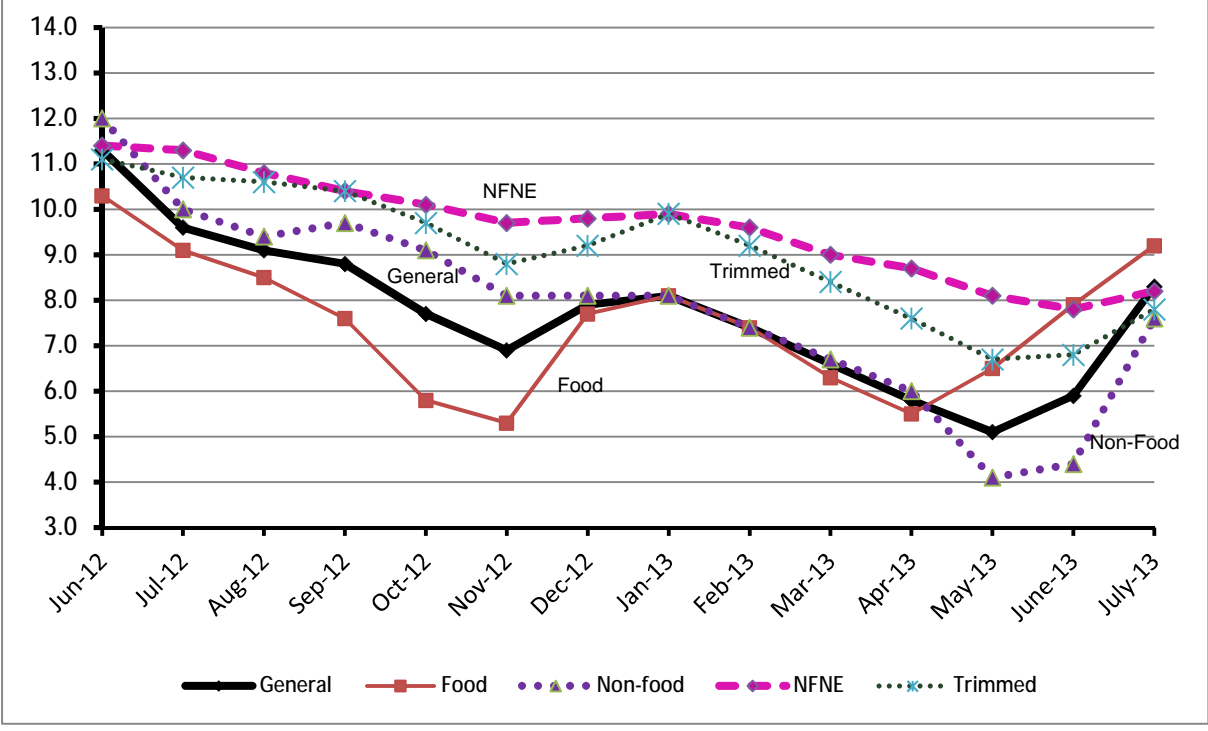
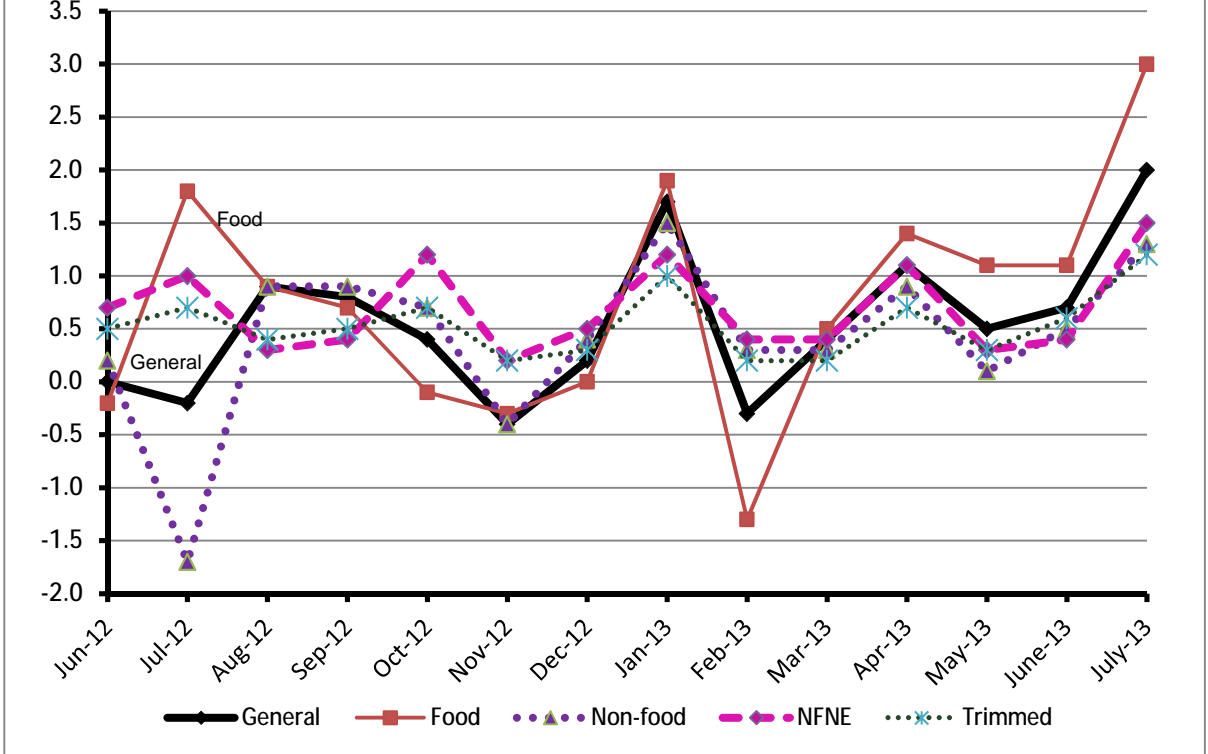


Figure 2: CPI Inflation MoM, Special Indices



II. Consumer Price Index (CPI)

The Consumer Price Index of July, 2013 has increased by 2.02% over June 2013 and increased by 8.26% over corresponding month of last year.

Table 2 : Consumer Price Index by Group of Commodities and Services (Base 2007-08)

No	Group	Group Weight (%)	Indices			% Change July 2013 over		Impact (In % points) July 2013 over	
			July 2013	June 2013	July 2012	June 2013	July 2012	June 2013	July 2012
	General	100.00	183.58	179.94	169.57	2.02	8.26	2.02	8.26
1.	Food & Non-alcoholic Bev.	34.83	207.61	202.11	190.58	2.72	8.94	1.07	3.50
	<i>Non-perishable Food Items</i>	29.84	203.25	201.88	190.13	0.68	6.90	0.23	2.31
	<i>Perishable Food Items</i>	4.99	233.67	203.50	193.25	14.83	20.92	0.84	1.19
2.	Alcoholic Bev. & Tobacco	1.41	217.46	194.66	189.36	11.71	14.84	0.18	0.23
3.	Clothing & Footwear	7.57	190.42	186.46	165.67	2.12	14.94	0.17	1.11
4.	Housing, Water, Electricity, Gas & Fuels	29.41	157.54	154.65	147.92	1.87	6.50	0.47	1.67
5.	Furnishing & Household Equipment Maintenance	4.21	187.23	185.82	174.01	0.76	7.60	0.03	0.33
6.	Health	2.19	161.45	160.93	149.84	0.32	7.75	0.01	0.15
7.	Transport	7.20	188.83	187.25	178.58	0.84	5.74	0.06	0.43
8.	Communication	3.22	129.62	128.73	123.56	0.69	4.90	0.02	0.12
9.	Recreation & Culture	2.03	178.48	177.84	164.63	0.36	8.41	0.01	0.17
10.	Education	3.94	164.25	163.54	152.71	0.43	7.56	0.02	0.27
11.	Restaurants & Hotels	1.23	213.87	210.64	196.24	1.53	8.98	0.02	0.13
12.	Miscellaneous	2.76	200.91	202.39	190.67	-0.73	5.37	-0.02	0.17

Main contributors to month-on-month and year-on-year percentage changes are given below and detail is given in Annexure A.

1. **Month-on-month** Top few commodities which varied from previous month i.e. June 2013 are given below:-

Food Items Increased: Tomatoes (79.83%), Potatoes (24.87%), Fresh Fruits (13.59%), Cigarettes (11.88%), Eggs (8.95%), Pulse Moong (5.84%), Gur (4.56%), Onions (4.09%), Wheat (3.50%), Fresh Vegetables (2.94%), Beans (2.84%), Wheat Flour (2.42%), Pulse Masoor (1.99%), Tea (1.78%) and Readymade Food (1.53%).

Decreased: Besan (9.27%), Pulse Gram (5.27%), Gram Whole (3.96%), Chicken (3.71%), Spices (1.15%), Cooking Oil (0.57%), Pulse Mash (0.43%) and Vegetable Ghee (0.08%).

Non-food Items Increased: Postal Services (23.25%), Footwear (6.28%), Tailoring (3.72%), Kerosene Oil (2.73%), House Rent (2.54%), Construction Input Items (2.14%), Cosmetics (2.06%), Construction Wage Rates (1.94%) and Motor Vehicle Accessories (1.64%).

Decreased: Personal Equipments (2.62%).

2. **Year-on-year:** Top few commodities which varied from previous year i.e. July 2012 are given below:-

Food Items Increased: Tomatoes (247.10%), Onions (61.82%), Tea (25.34%), Wheat Flour (23.43%), Wheat (22.47%), Fresh Vegetables (19.56%), Gur (18.19%), Wheat Products (17.95%), Cigarettes (14.96%), Rice (13.19%), Cereals (11.62%) and Potatoes (11.46%).

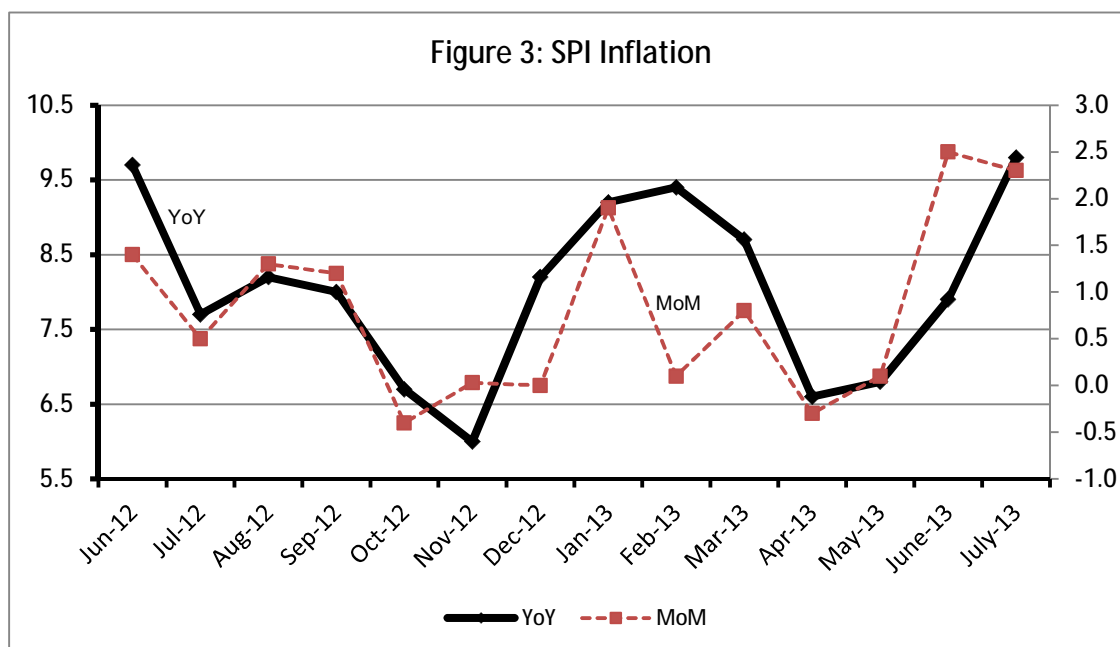
Decreased: Pulse Gram (25.56%), Besan (22.67%), Spices (19.38%), Gram Whole (18.50), Vegetable Ghee (5.17%), Fresh Fruits (4.14%), Pulse Mash (3.88%), Cooking Oil (1.42%), Mustard Oil (0.89%), Chicken (0.76%) and Sugar (0.63%).

Non-food Items Increased: Postal Services (25.98%), Woolen Readymade Garments (18.92%), Footwear (18.78%), Tailoring (16.03%), Dopatta (14.99%), Cotton Cloth (14.32%), Cleaning & Laundry (14.10%), Newspapers (13.68%) and Text Books (12.95%).

III. Sensitive Price Indicator

Quintile-wise percentage changes YoY and MoM are given below in Table 3. The series from June 2012 to July 2013 is also graphed below in Figure 3.

Table 3 : Sensitive Price Indicator (Base 2007-08)					
Quintiles	Indices			% Change July 2013 over	
	July 2013	June 2013	July 2012	June 2013	July 2012
1	195.49	191.15	178.05	2.27	9.80
2	201.80	197.59	184.66	2.13	9.28
3	200.49	196.33	183.65	2.12	9.17
4	201.84	197.73	184.94	2.08	9.14
5	201.59	197.73	185.01	1.95	8.96
Combined	200.80	196.75	183.98	2.06	9.14



IV. Wholesale Price Index

The Wholesale Price Index for July 2013 increased by 1.65% over June 2013. It increased by 6.55% over the corresponding month of the last year. YoY and MoM movements, from June 2012 to July 2013 are also graphed below in Figure 4.

Table 4 : Wholesale Price Index by Group of Commodities (Base 2007-08)

No.	Group	Group Weight (%)	Indices			% Change Jul 2013 over		Impact (in %age points) Jul 2013 over	
			Jul 2013	Jun 2013	Jul 2012	Jun 2013	July 2012	Jun 2013	Jul 2012
	General	100.00	202.49	199.21	190.05	1.65	6.55	1.65	6.55
1.	Agriculture, Forestry & Fishery Products	25.77	214.77	209.16	197.57	2.68	8.71	0.72	2.33
2.	Ores & Minerals, Electricity, Gas & Water	12.04	215.17	214.86	206.19	0.14	4.36	0.02	0.57
3.	Food Products, Beverages & Tobacco, Textiles, Apparel & Leather Products	31.11	195.21	192.87	182.41	1.21	7.02	0.37	2.10
	i. Food Products, Bev. & Tobacco	20.07	198.23	195.63	187.11	1.33	5.94	0.26	1.17
	ii. Textiles and Apparel	10.33	191.81	190.61	177.68	0.63	7.95	0.06	0.77
	iii. Leather Products	0.71	159.51	147.99	118.56	7.78	34.54	0.04	0.15
4.	Other Transportable Goods except Metal Products, Machinery & Equipments	22.37	206.44	202.56	195.56	1.92	5.56	0.44	1.28
5.	Metal Products, Machinery & Equipments	8.72	164.46	162.20	158.63	1.39	3.68	0.10	0.27

Main contributors to month-on-month and year-on-year percentage changes are given below and detail is given in Annexure B.

1. **Month-on-month** Top few commodities which varied from previous month i.e. June 2013 are given below:-

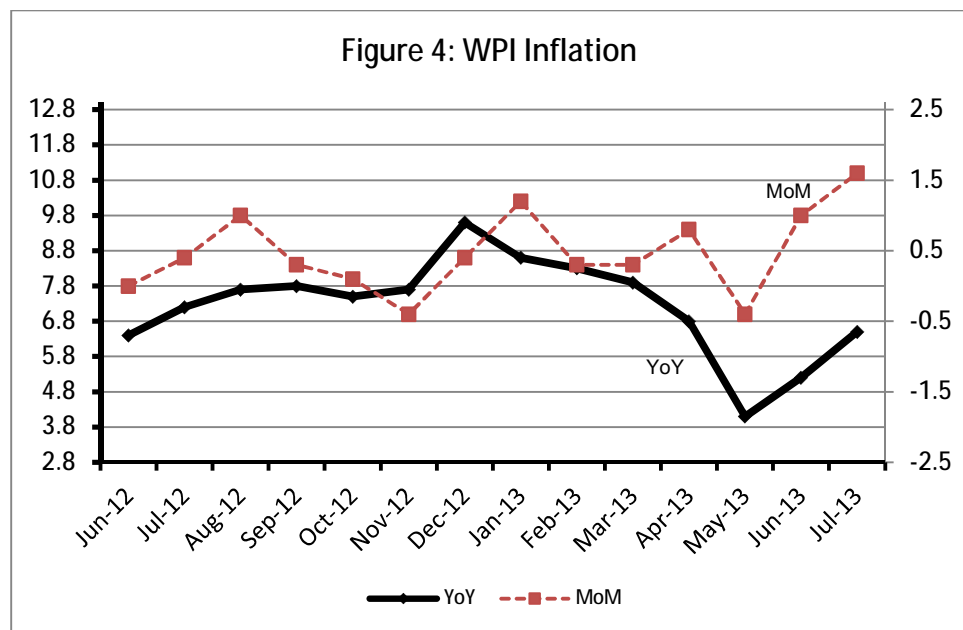
Increased: Edible Roots/ Potatoes (26.60%), Tobacco Products (16.10%), Vegetables (13.27%), other leather N.E.C (13.12%), Fresh Fruits (11.50%), Stimulants & Spice Crops (9.23%), Eggs (9.15%), Ice cream (6.72%), Leather without hair (5.78%) and Lighting Equipment (5.07%).

Decreased: Spices (13.44%), Other cereal Flour (8.48%), Poultry (4.07%), Processed Liquid Milk (1.25%), Dry Fruits (0.95%), Pulses (0.89%), Hides and Fur Skins, Raw (0.69%), Blended Yarn (0.60%), Bricks, Blocks and Tiles (0.59%) and Nylon Yarn (0.57%).

2. **Year-on-year** Top few commodities which varied from previous year i.e. July, 2012 are given below:-

Increased: Other Leather N.E.C (65.68%), Vegetables (47.05%), Fish (44.51%), stimulant and Spice Crops (35.90%), Jowar (33.82%), Wheat (25.46%), Salt and Pure Sodium Chloride (23.91%), Wheat Flour (23.68%), Woven Fabrics (23.13%) and leather without Hair (20.65%).

Decreased: Spices (35.43%), other Cereal Flour (29.81%), Pulses (16.61%), Fresh Fruits (12.05%), Synthetic Carpets (10.90%), Furnace Oil (9.30%), Cotton Seeds (8.86%), other Glass Articles (5.45%), Radio and Television (4.70%) and Poultry (3.06%).



Annexure A: Consumer Price Index Numbers by Commodity Groups & Commodities (2007-2008=100)

Item and Specification	Weight	Index Numbers			% Change in Jul 2013 over	
		Jul 13	Jun 13	Jul 12	Jun 2013	Jul 2012
General	100.0000	183.58	179.94	169.57	+ 2.02	+ 8.26
Food & Non-alcoholic Beverage	34.8343	207.61	202.11	190.58	+ 2.72	+ 8.94
01 Wheat	0.3477	194.81	188.23	159.07	+ 3.50	+ 22.47
02 Wheat Flour	4.1648	204.57	199.73	165.74	+ 2.42	+ 23.43
03 Wheat Product	0.0959	191.61	189.19	162.45	+ 1.28	+ 17.95
04 Besan	0.1500	180.85	199.32	233.88	- 9.27	- 22.67
05 Rice	1.5821	189.10	186.75	167.07	+ 1.26	+ 13.19
06 Cereals	0.1563	219.23	216.83	196.40	+ 1.11	+ 11.62
07 Bakery & Confectionary	1.1550	183.59	183.07	170.02	+ 0.28	+ 7.98
08 Nimco	0.4574	208.18	206.43	191.57	+ 0.85	+ 8.67
09 Meat	2.4303	225.18	223.43	214.77	+ 0.78	+ 4.85
10 Chicken	1.3596	203.56	211.41	205.11	- 3.71	- 0.76
11 Fish	0.2970	200.39	200.15	186.25	+ 0.12	+ 7.59
12 Milk Fresh	6.6800	226.78	225.78	210.80	+ 0.44	+ 7.58
13 Milk Products	0.6338	219.34	216.57	205.90	+ 1.28	+ 6.53
14 Milk Powder	0.1129	192.03	190.81	180.01	+ 0.64	+ 6.68
15 Eggs	0.4555	167.03	153.31	154.16	+ 8.95	+ 8.35
16 Mustard Oil	0.0952	158.64	158.43	160.06	+ 0.13	- 0.89
17 Cooking Oil	1.7538	161.62	162.54	163.95	- 0.57	- 1.42
18 Vegetable Ghee	2.0714	155.82	155.94	164.31	- 0.08	- 5.17
19 Dry Fruits	0.2543	217.86	214.95	199.15	+ 1.35	+ 9.39
20 Fresh Fruits	1.8649	234.05	206.05	244.15	+ 13.59	- 4.14
21 Pulse Masoor	0.2712	157.42	154.35	143.47	+ 1.99	+ 9.72
22 Pulse Moong	0.2336	237.14	224.06	230.89	+ 5.84	+ 2.71
23 Pulse Mash (Washed)	0.2098	187.00	187.81	194.55	- 0.43	- 3.88
24 Pulse Gram	0.2361	179.42	189.40	241.04	- 5.27	- 25.56
25 Gram Whole	0.1616	187.26	194.98	229.76	- 3.96	- 18.50
26 Beans	0.0269	228.13	221.84	205.15	+ 2.84	+ 11.20
27 Potatoes	0.4699	211.16	169.11	189.45	+ 24.87	+ 11.46
28 Onion	0.5340	249.51	239.70	154.19	+ 4.09	+ 61.82
29 Tomatoes	0.4419	322.23	179.19	92.84	+ 79.83	+ <u>247.1</u>
30 Fresh Vegetables	1.6802	211.21	205.17	176.65	+ 2.94	+ 19.56
31 Sugar	1.0445	195.93	194.50	197.18	+ 0.74	- 0.63
32 Gur	0.0220	261.46	250.06	221.22	+ 4.56	+ 18.19
33 Honey	0.0446	256.65	256.65	237.13	+ 0.00	+ 8.23
34 SweetMeat	0.2483	211.81	210.79	200.89	+ 0.48	+ 5.44
35 Beverages	1.1990	186.90	184.25	168.43	+ 1.44	+ 10.97
36 Jam, Tomato Ketchup & Pickles	0.2454	187.26	185.63	172.43	+ 0.88	+ 8.60
37 Condiments	0.2656	217.51	216.64	210.32	+ 0.40	+ 3.42
38 Spices	0.5441	216.85	219.37	268.98	- 1.15	- 19.38
39 Tea	0.8377	252.69	248.27	201.61	+ 1.78	+ 25.34
Alcoholic Beverages, Tobacco	1.4135	217.46	194.66	189.36	+ 11.71	+ 14.84
40 Cigarettes	1.3906	217.93	194.79	189.57	+ 11.88	+ 14.96
41 Betel Leaves & Nuts	0.0229	188.57	186.64	176.60	+ 1.03	+ 6.78
Clothing & Footwear	7.5708	190.42	186.46	165.67	+ 2.12	+ 14.94
42 Cotton Cloth	1.7286	177.82	176.47	155.55	+ 0.77	+ 14.32
43 Woolen Cloth	0.8759	206.87	206.49	184.64	+ 0.18	+ 12.04
44 Readymade Garments	0.9739	185.06	182.09	164.95	+ 1.63	+ 12.19
45 Woolen Readymade Garments	0.3964	192.45	192.45	161.83	+ 0.00	+ 18.92
46 Hosiery	0.5094	195.40	194.30	173.15	+ 0.57	+ 12.85
47 Dopatta	0.4412	205.47	203.75	178.69	+ 0.84	+ 14.99
48 Cleaning and Laundry	0.2110	208.19	206.24	182.46	+ 0.95	+ 14.10
49 Tailoring	0.8840	226.68	218.55	195.36	+ 3.72	+ 16.03
50 Footwear	1.5504	168.99	159.00	142.27	+ 6.28	+ 18.78

Annexure A: Consumer Price Index Numbers by Commodity Groups & Commodities (2007-2008=100)

Item and Specification	Weight	Index Numbers			% Change in Jul 2013 over			
		Jul 13	Jun 13	Jul 12	Jun 2013	Jul 2012		
Housing, Water, Elec., Gas, Other	29.4149	157.54	154.65	147.92	+	1.87	+	6.50
51 House Rent	21.8149	148.24	144.57	137.02	+	2.54	+	8.19
52 Construction Input Items	0.5623	214.61	210.12	198.90	+	2.14	+	7.90
53 Construction Wage Rates	0.3331	185.33	181.81	167.76	+	1.94	+	10.47
54 Water Supply	0.4971	141.36	139.65	133.23	+	1.22	+	6.10
55 Electricity	4.3985	196.37	196.37	196.37	+	0.00	+	0.00
56 Gas	1.5756	143.81	143.81	134.34	+	0.00	+	7.05
57 Kerosene Oil	0.0057	274.98	267.67	243.58	+	2.73	+	12.89
58 Firewood Whole	0.2277	244.09	243.22	225.49	+	0.36	+	8.25
Furnished H.Hold Equip.& Hous	4.2082	187.23	185.82	174.01	+	0.76	+	7.60
59 Furniture	0.3315	177.21	174.82	163.36	+	1.37	+	8.48
60 Household Textiles	0.6489	182.53	180.81	170.35	+	0.95	+	7.15
61 Household Equipment	0.5936	162.88	162.40	155.52	+	0.30	+	4.73
62 Utensils	0.3212	185.91	184.55	173.16	+	0.74	+	7.36
63 Plastic Products	0.2547	183.11	181.60	173.73	+	0.83	+	5.40
64 Washing Soaps & Detergents	0.7893	204.48	203.46	189.47	+	0.50	+	7.92
65 Sewing Needle & Dr Cell	0.1496	166.67	166.36	148.64	+	0.19	+	12.13
66 Household Servant	1.0432	197.48	195.58	181.30	+	0.97	+	8.92
67 Marriage Hall Charges	0.0762	201.35	200.04	190.06	+	0.65	+	5.94
Health	2.1868	161.45	160.93	149.84	+	0.32	+	7.75
68 Drugs & Medicines	1.2667	141.18	140.94	132.72	+	0.17	+	6.37
69 Medical Equipments	0.0080	205.49	205.49	189.54	+	0.00	+	8.42
70 Doctor (MBBS) Clinic Fee	0.5904	204.66	203.36	185.15	+	0.64	+	10.54
71 Medical Tests	0.3217	160.87	160.67	151.52	+	0.12	+	6.17
Transport	7.2023	188.83	187.25	178.58	+	0.84	+	5.74
72 Motor Vehicles	0.6630	158.19	156.71	150.32	+	0.94	+	5.24
73 Motor Vehicle Accessories	0.2439	217.18	213.67	203.03	+	1.64	+	6.97
74 Motor Fuel	3.0269	181.80	179.10	164.31	+	1.51	+	10.64
75 Mechanical Service	0.4552	190.80	189.24	179.09	+	0.82	+	6.54
76 Motor Vehicle Tax	0.1099	153.74	153.74	152.02	+	0.00	+	1.13
77 Transport Services	2.7034	202.74	202.50	200.29	+	0.12	+	1.22
Communication	3.2198	129.62	128.73	123.56	+	0.69	+	4.90
78 Postal Services	0.0662	215.89	175.16	171.37	+	23.25	+	25.98
79 Communication & Apparatus	3.1536	127.81	127.75	122.55	+	0.05	+	4.29
Recreation & Culture	2.0227	178.48	177.84	164.63	+	0.36	+	8.41
80 Recreation & Culture	0.8634	123.55	122.65	121.45	+	0.73	+	1.73
81 Text Books	0.5706	260.03	260.03	230.22	+	0.00	+	12.95
82 Newspapers	0.1934	170.49	170.49	149.97	+	0.00	+	13.68
83 Stationery	0.3953	184.67	183.35	171.42	+	0.72	+	7.73
Education	3.9431	164.25	163.54	152.71	+	0.43	+	7.56
84 Education	3.9431	164.25	163.54	152.71	+	0.43	+	7.56
Restaurants & Hotels	1.2286	213.87	210.64	196.24	+	1.53	+	8.98
85 Readymade Food	1.2286	213.87	210.64	196.24	+	1.53	+	8.98
Miscellaneous Goods & Service	2.7550	200.91	202.39	190.67	-	0.73	+	5.37
86 Personal Care	1.4935	185.88	185.79	174.64	+	0.05	+	6.44
87 Cosmetics	0.3853	166.59	163.22	148.03	+	2.06	+	12.54
88 Blades	0.0322	177.70	176.40	168.82	+	0.74	+	5.26
89 Personal Equipments	0.8440	244.06	250.63	239.33	-	2.62	+	1.98

Annexure B: Wholesale Price Indices by Major Groups & Commodities

(2007-2008=100)

Item and Specification	Weight	Index Numbers			% Change in Jul 2013 over	
		Jul 13	Jun 13	Jul 12	Jun 2013	Jul 2012
General	100.0000	202.49	199.21	190.05	+ 1.65	+ 6.55
Agriculture Forestry & Fisher	25.7674	214.77	209.16	197.57	+ 2.68	+ 8.71
001 Wheat	0.6297	206.16	198.50	164.32	+ 3.86	+ 25.46
002 Maize	0.6764	193.96	189.41	166.89	+ 2.40	+ 16.22
003 Rice	2.4413	177.08	174.41	157.90	+ 1.53	+ 12.15
004 Sorghum / Jowar	0.0214	270.15	259.71	201.88	+ 4.02	+ 33.82
005 Millet / Bajra	0.0374	193.87	191.77	176.57	+ 1.10	+ 9.80
006 Vegetables	1.2441	273.46	241.43	185.97	+ 13.27	+ 47.05
007 Fresh Fruits	1.5144	253.15	227.05	287.82	+ 11.50	- 12.05
008 Dry Fruits	0.2478	192.88	194.73	173.89	- 0.95	+ 10.92
009 Cotton Seeds	1.1511	165.17	164.31	181.23	+ 0.52	- 8.86
010 Other Oil Seeds	0.0722	169.50	170.04	174.82	- 0.32	- 3.04
011 Edible Roots / Potatoes	0.2540	188.79	149.12	178.09	+ 26.60	+ 6.01
012 Stimulant & Spice Crops	0.1634	231.75	212.17	170.53	+ 9.23	+ 35.90
013 Pulses	0.4901	184.78	186.44	221.59	- 0.89	- 16.61
014 Sugar Crops	1.0725	267.92	267.92	267.92	+ 0.00	+ 0.00
015 Fibre Crops	5.3169	210.28	207.94	194.22	+ 1.13	+ 8.27
016 Unmanufactured Tobacco	0.0742	176.34	176.22	167.67	+ 0.07	+ 5.17
017 Poultry	0.5633	215.62	224.76	222.42	- 4.07	- 3.06
018 Raw Milk from Bovine Animals	7.0279	220.27	218.54	207.47	+ 0.79	+ 6.17
019 Eggs	0.5034	167.37	153.34	155.50	+ 9.15	+ 7.63
020 Raw Animal Materials / Wool	0.0351	151.73	150.66	135.38	+ 0.71	+ 12.08
021 Hides & Fur Skins, Raw	0.4834	140.52	141.49	137.11	- 0.69	+ 2.49
022 Fuel Wood in Logs	0.0179	230.69	228.51	203.50	+ 0.95	+ 13.36
023 Fish Live Fresh or Chilled	1.7295	247.49	240.87	171.26	+ 2.75	+ 44.51
Ores/Minerals, Elec., Gas & W	12.0389	215.17	214.86	206.19	+ 0.14	+ 4.36
024 Coal not Agglomerated	0.7508	223.53	223.53	196.08	+ 0.00	+ 14.00
025 Natural Gas Liquified	5.7385	203.74	203.09	188.89	+ 0.32	+ 7.86
026 Salt & Pure Sodium Chloride	0.0584	204.73	203.88	165.22	+ 0.42	+ 23.91
027 Electrical Energy	5.4912	226.10	226.10	226.10	+ 0.00	+ 0.00
Food, Beverages, Tobacco, Textil	31.1122	195.21	192.87	182.41	+ 1.21	+ 7.02
Food Products, Beverages &	20.0718	198.23	195.63	187.11	+ 1.33	+ 5.94
028 Meat of Animals	3.4559	232.94	232.03	225.25	+ 0.39	+ 3.41
029 Vegetables & Fruit Juice	0.0058	190.74	190.57	179.40	+ 0.09	+ 6.32
030 Dried Fruits & Nuts	0.1733	222.76	222.76	207.20	+ 0.00	+ 7.51
031 Fruit Juices	0.3880	164.49	163.81	156.40	+ 0.42	+ 5.17
032 Vegetable Oils Refined	1.9242	160.21	159.65	158.08	+ 0.35	+ 1.35
033 Vegetable Ghee	1.5632	141.00	141.61	145.30	- 0.43	- 2.96
034 Oil Cakes	0.9611	175.62	171.55	148.24	+ 2.37	+ 18.47
035 Processed Liquid Milk	4.4437	205.54	208.15	202.74	- 1.25	+ 1.38
036 Milk & Cream in Solid Form	0.0316	178.39	177.58	169.39	+ 0.46	+ 5.31
037 Ice Cream	0.0047	204.00	191.15	170.00	+ 6.72	+ 20.00
038 Dairy Products N.E.C	0.0117	216.21	213.25	203.56	+ 1.39	+ 6.21
039 Wheat Flour	2.3034	190.04	186.66	153.66	+ 1.81	+ 23.68
040 Other Cereal Flour	0.0604	150.06	163.97	213.80	- 8.48	- 29.81
041 Sugar Refined	1.7975	212.01	208.83	203.40	+ 1.52	+ 4.23
042 Chocolate	0.0139	99.19	99.19	99.19	+ 0.00	+ 0.00
043 Sugar Confectionary	0.0738	102.28	102.28	100.40	+ 0.00	+ 1.87
044 Coffee & Tea	0.7303	229.54	223.78	191.91	+ 2.57	+ 19.61
045 Spices	0.1449	197.26	227.90	305.49	- 13.44	- 35.43
046 Other Food Products	0.0336	316.68	314.63	314.93	+ 0.65	+ 0.56
047 Mineral Water	0.0207	177.53	175.01	165.88	+ 1.44	+ 7.02
048 Beverages	0.6303	139.35	139.28	135.30	+ 0.05	+ 2.99
049 Tobacco Products	1.2998	242.41	208.80	208.80	+ 16.10	+ 16.10
Textiles & Apparels	10.3289	191.81	190.61	177.68	+ 0.63	+ 7.95
050 Cotton Yarn	5.2491	210.89	209.76	198.24	+ 0.54	+ 6.38
051 Nylon Yarn	0.1719	188.58	189.67	175.86	- 0.57	+ 7.23
052 Blended Yarn	0.1689	197.47	198.67	186.60	- 0.60	+ 5.83
053 Woven Fabrics	0.0128	208.98	208.98	169.72	+ 0.00	+ 23.13
054 Cotton Fabrics	0.6343	183.43	182.84	174.86	+ 0.32	+ 4.90
055 Other Fabrics	1.1016	175.06	172.31	165.46	+ 1.60	+ 5.80

Annexure B: Wholesale Price Indices by Major Groups & Commodities

(2007-2008=100)

Item and Specification	Weight	Index Numbers			% Change in Jul 2013 over	
		Jul 13	Jun 13	Jul 12	Jun 2013	Jul 2012
056 Silk & Reyon Fabrics	0.7350	159.34	158.62	142.47	+ 0.45	+ 11.84
057 Towels	0.1235	213.19	213.19	192.17	+ 0.00	+ 10.94
058 Blankets	0.0029	185.21	185.21	164.83	+ 0.00	+ 12.36
059 Bed Sheets	0.0913	213.18	213.18	185.57	+ 0.00	+ 14.88
060 Quilts	0.0019	156.32	154.00	147.05	+ 1.51	+ 6.30
061 Woolen Carpets	0.0383	106.55	106.55	106.55	+ 0.00	+ 0.00
062 Synthetic Carpets	0.0566	114.41	114.41	128.41	+ 0.00	- 10.90
063 Hosiery Products	0.8832	185.30	185.30	164.70	+ 0.00	+ 12.51
064 Readymade Garments	1.0576	150.00	147.20	127.25	+ 1.90	+ 17.88
Leather Products	0.7115	159.51	147.99	118.56	+ 7.78	+ 34.54
065 Leather Without Hair	0.2973	132.51	125.27	109.83	+ 5.78	+ 20.65
066 Other Leather N.E.C	0.2567	203.07	179.51	122.57	+ 13.12	+ 65.68
067 Footwears	0.1575	139.49	139.49	128.50	+ 0.00	+ 8.55
Other Transportable Goods	22.3659	206.44	202.56	195.56	+ 1.92	+ 5.56
068 Timber	0.0165	157.52	154.65	145.11	+ 1.86	+ 8.55
069 Printing Paper	0.4279	164.45	164.54	153.92	- 0.05	+ 6.84
070 Hard Board	0.1579	200.00	200.00	166.67	+ 0.00	+ 20.00
071 Coke	0.2797	163.45	163.45	163.45	+ 0.00	+ 0.00
072 Motor Spirit	1.5336	171.92	169.03	143.91	+ 1.71	+ 19.46
073 Diesel Oil	5.2664	254.92	248.72	232.99	+ 2.49	+ 9.41
074 Kerosine Oil	0.2151	256.74	250.79	232.52	+ 2.37	+ 10.42
075 Furnace Oil	3.2664	171.62	169.52	189.21	+ 1.24	- 9.30
076 Mobil Oil	0.7114	191.04	186.56	179.57	+ 2.40	+ 6.39
077 Chemicals	1.7720	163.56	160.39	146.39	+ 1.98	+ 11.73
078 Dyeing Material	0.1539	107.23	107.23	104.26	+ 0.00	+ 2.85
079 Fertilizers	2.8657	268.23	261.32	261.59	+ 2.64	+ 2.54
080 Pesticides	0.2763	208.72	203.99	184.25	+ 2.32	+ 13.28
081 Insecticides	0.1276	124.43	123.90	117.64	+ 0.43	+ 5.77
082 Paints & Varnishes	0.1916	247.56	244.12	233.80	+ 1.41	+ 5.89
083 Medicines	1.1428	138.83	138.71	134.27	+ 0.09	+ 3.40
084 Soaps & Detergents	0.8168	176.55	176.21	157.12	+ 0.19	+ 12.37
085 Auto Tyres	0.2703	185.57	184.54	176.49	+ 0.56	+ 5.14
086 Plastic Products	0.4550	198.15	197.98	191.18	+ 0.09	+ 3.65
087 Glass sheets	0.2089	203.49	201.02	183.78	+ 1.23	+ 10.72
088 Other Glass Articles	0.1635	206.09	206.09	217.98	+ 0.00	- 5.45
089 Ceramics & Sanitary Fixture	0.0244	164.06	161.77	150.87	+ 1.42	+ 8.74
090 Bricks, Blocks & Tiles	0.1566	184.78	185.87	170.40	- 0.59	+ 8.44
091 Cement	1.8145	194.83	189.49	180.22	+ 2.82	+ 8.11
092 Bed Foam	0.0006	144.33	144.33	133.83	+ 0.00	+ 7.85
093 Matches	0.0505	143.20	142.72	122.82	+ 0.34	+ 16.59
Metal Product, Machinery & Eq	8.7156	164.46	162.20	158.63	+ 1.39	+ 3.68
094 Pig Iron	0.0593	128.97	128.97	128.97	+ 0.00	+ 0.00
095 Steel Bar & Sheets	1.4022	138.21	135.04	139.57	+ 2.35	- 0.97
096 Pipe Fittings	0.0780	149.13	148.98	141.04	+ 0.10	+ 5.74
097 Steel Products	0.3879	167.61	167.61	160.53	+ 0.00	+ 4.41
098 Engines & Motors	0.0046	109.07	109.07	109.07	+ 0.00	+ 0.00
099 Vacuum Pumps	0.0155	115.39	115.39	115.39	+ 0.00	+ 0.00
100 Air Conditioners	0.0049	179.78	179.78	172.67	+ 0.00	+ 4.12
101 Cultivators	0.0551	189.23	189.23	184.66	+ 0.00	+ 2.47
102 Chuff Cutter	0.1293	144.94	144.94	138.54	+ 0.00	+ 4.62
103 Tractors	0.0028	161.96	161.96	161.96	+ 0.00	+ 0.00
104 Lathe Machines	0.0525	147.68	147.68	147.68	+ 0.00	+ 0.00
105 Concrete Mixture	0.0107	138.83	138.83	138.83	+ 0.00	+ 0.00
106 Fridge, WashM, SewM, Fans, Iron	1.1645	179.92	177.00	164.31	+ 1.65	+ 9.50
107 Electric Wires	0.0912	167.53	160.12	163.80	+ 4.63	+ 2.28
108 Lighting Equipments	1.4431	159.47	151.78	146.79	+ 5.07	+ 8.64
109 Radio & Television	0.1843	126.49	126.49	132.73	+ 0.00	- 4.70
110 Motor Vehicles	0.0244	173.99	173.75	167.04	+ 0.14	+ 4.16
111 Motorcycles	0.2570	124.80	124.56	125.19	+ 0.19	- 0.31
112 Bicycles	3.3483	178.81	178.81	175.08	+ 0.00	+ 2.13