



Monthly Review on Price Indices



January, 2013
(Base 2007-08)

Government of Pakistan
Statistics Division
Pakistan Bureau of Statistics
Islamabad

I. Inflation in Brief

1. CPI inflation, General, increased by 8.1% on year-on-year basis in January 2013 as compared to 7.9% in the previous month and 10.1% in January 2012. On month-on-month basis, it increased by 1.7% in January 2013 as compared to 0.2% in the previous month and an increase of 1.5% in January 2012.
2. Core inflation measured by non-food non-energy CPI (Core NFNE) increased by 9.9% in January 2013 as compared to 9.8% in December 2012 (YoY) and by 10.2% in January 2012. Core NFNE inflation on MoM basis increased by 1.2% in January 2013 as compared to 0.5% a month earlier and 1.1% in January 2012.
3. Core inflation, measured by 20% weighted trimmed mean CPI (Core Trimmed) increased by 9.9% in January 2013 and by 9.2% in December 2012 (YoY) which increased by 10.4% in January 2012. Core Trimmed inflation has increased by 1.0% on MoM basis in January 2013 as compared to 0.3% in December 2012 which increased by 0.8% in January 2012.
4. SPI inflation on YoY basis increased by 9.2% in January 2013 compared with 8.2% a month earlier and 3.9% in January 2012. On MoM basis, it increased by 1.9% in January 2013 as compared to an increase of 0.05% a month earlier and increased by 1.0% in January 2012.
5. WPI inflation on YoY basis increased to 8.6% in January 2013 compared with 9.6% a month earlier and 8.7% in January 2012. WPI inflation on MoM basis increased by 1.2% in January 2013 as compared to an increase of 0.4% a month earlier and increased by 2.3% in January 2012.
6. Figures 1 and 2 show graphically the data of Table 1. Table 1.1 shows "Period Average" and "YoY" percent changes in indices of three years.

Table 1: Inflation (%) (Base 2007-08)

Period	CPI						Core Inflation				SPI**		WPI	
	General		Food		Non-food		NFNE*		Trimmed		YoY	MoM	YoY	MoM
	YoY	MoM	YoY	MoM	YoY	MoM	YoY	MoM	YoY	MoM				
Dec 11	9.7	-0.7	9.5	-2.2	9.9	0.4	10.1	0.4	10.5	0.3	3.0	-2.0	8.3	-1.3
Jan 12	10.1	1.5	9.2	1.5	10.7	1.6	10.2	1.1	10.4	0.8	3.9	1.0	8.7	2.3
Feb 12	11.0	0.3	10.5	-0.7	11.5	1.0	10.6	0.7	10.7	0.5	5.2	-0.1	7.2	0.6
Mar 12	10.8	1.2	9.8	1.5	11.5	0.9	10.8	1.0	10.5	0.8	6.1	1.5	4.5	0.7
Apr 12	11.3	1.8	10.7	2.2	11.6	1.6	10.8	1.4	11.0	1.3	7.5	1.7	3.8	1.8
May 12	12.3	1.1	11.3	0.2	13.1	1.9	11.1	0.8	11.7	0.5	8.1	-0.1	7.1	2.1
Jun 12	11.3	0.0	10.3	-0.2	12.0	0.2	11.4	0.7	11.1	0.5	9.7	1.4	6.4	0.0
Jul 12	9.6	-0.2	9.1	1.8	10.0	-1.7	11.3	1.0	10.7	0.7	7.7	0.5	7.2	0.4
Aug 12	9.1	0.9	8.5	0.9	9.4	0.9	10.8	0.3	10.6	0.4	8.2	1.3	7.7	1.0
Sep 12	8.8	0.8	7.6	0.7	9.7	0.9	10.4	0.4	10.4	0.5	8.0	1.2	7.8	0.3
Oct 12	7.7	0.4	5.8	-0.1	9.1	0.7	10.1	1.2	9.7	0.7	6.7	-0.4	7.5	0.1
Nov 12	6.9	-0.4	5.3	-0.3	8.1	-0.4	9.7	0.2	8.8	0.2	6.0	0.0 ¹	7.7	-0.4
Dec 12	7.9	0.2	7.7	0.0 ²	8.1	0.4	9.8	0.5	9.2	0.3	8.2	0.0 ³	9.6	0.4
Jan 13	8.1	1.7	8.1	1.9	8.1	1.5	9.9	1.2	9.9	1.0	9.2	1.9	8.6	1.2

*NFNE is non-food non-energy, ** SPI for quintile 1 ,

² Actual figure is 0.04, displayed in rounded figure ,

¹ Actual figure is 0.03, displayed in rounded figure

³ Actual figure is 0.05, displayed in rounded figure

Table 1.1 : Period Average and YoY % Changes of Indices (Base 2007-08)

Index	Averages July-January % Changes			January over January % Changes		
	2012-13	2011-12	2010-11	2012-13	2011-12	2010-11
CPI	8.28	10.76	14.26	8.07	10.10	13.91
SPI	7.71	6.91	18.38	9.21	3.95	17.34
WPI	8.03	14.16	19.68	8.56	8.70	20.90

Figure 1: CPI Inflation YoY, Special Indices

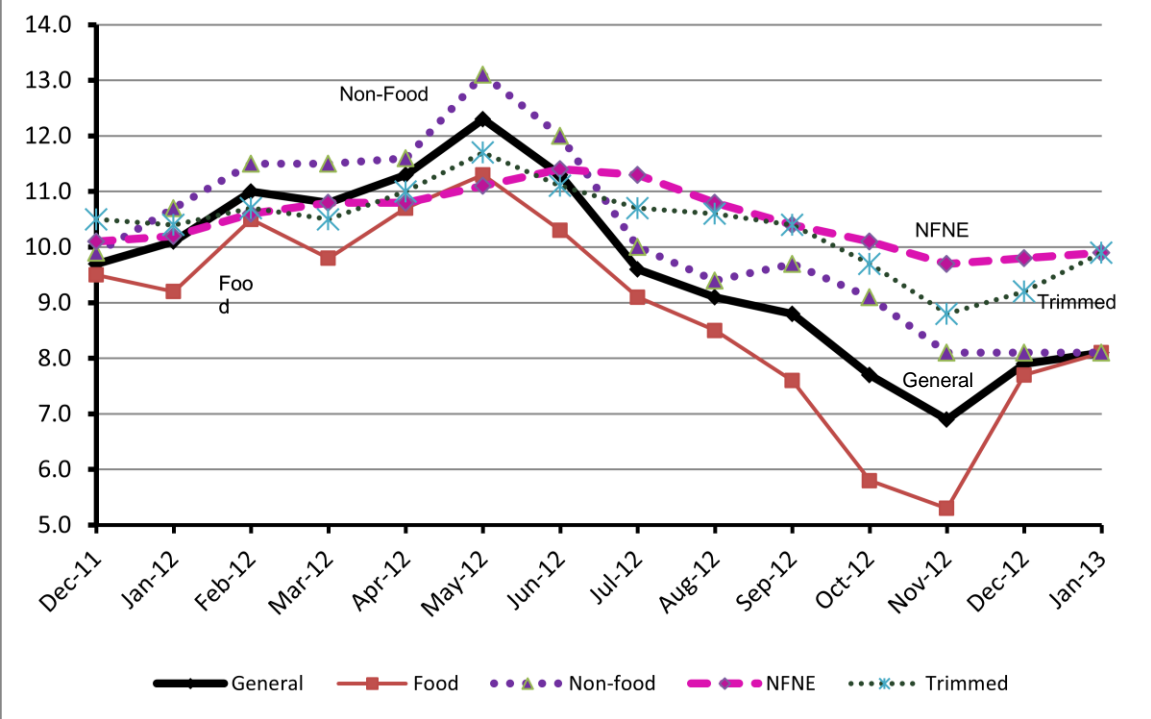
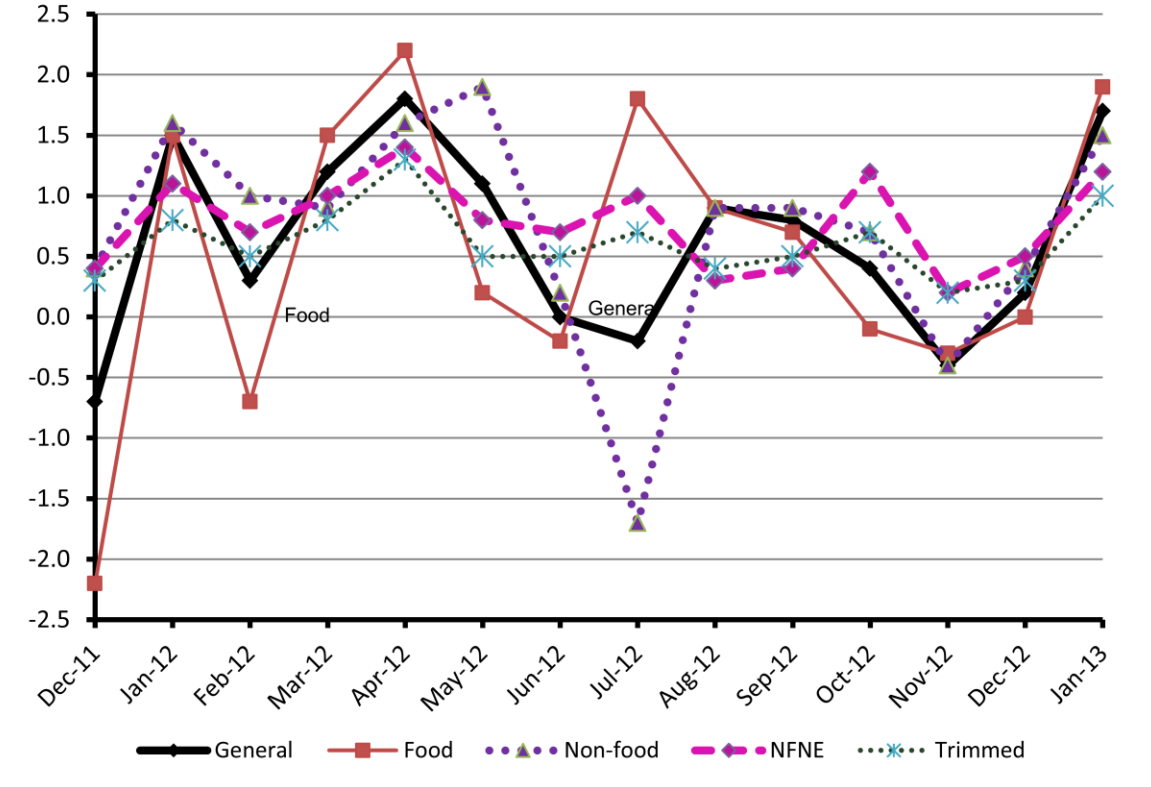


Figure 2: CPI Inflation MoM, Special Indices



II. Consumer Price Index (CPI)

The Consumer Price Index of January, 2013 has increased by 1.67% over December, 2012 and increased by 8.07% over corresponding month of last year.

Table 2 : Consumer Price Index by Group of Commodities and Services (Base 2007-08)

No	Group	Group Weight (%)	Indices			% Change Jan 2013 over		Impact (Adjusted) (In % points) Jan 2013 over	
			Jan 2013	Dec 2012	Jan 2012	Dec 2012	Jan 2012	Dec 2012	Jan 2012
	General	100.00	175.70	172.82	162.58	1.67	8.07	1.67	8.07
1.	Food & Non-alcoholic Bev.	34.83	196.52	192.71	182.60	1.98	7.62	0.68	2.69
	<i>Non-perishable Food Items</i>	29.84	199.77	195.52	181.57	2.17	10.02	0.65	3.00
	<i>Perishable Food Items</i>	4.99	177.08	175.90	188.77	0.67	-6.19	0.03	-0.31
2.	Alcoholic Bev.& Tobacco	1.41	191.17	191.04	161.68	0.07	18.24	0.00	0.26
3.	Clothing & Footwear	7.57	177.05	175.58	153.60	0.84	15.27	0.06	1.16
4.	Housing, Water, Electricity, Gas & Fuels	29.41	152.73	150.10	147.43	1.75	3.59	0.51	1.06
5.	Furnishing & Household Equipment Maintenance	4.21	180.97	180.08	162.82	0.49	11.15	0.02	0.47
6.	Health	2.19	157.50	156.76	138.53	0.47	13.69	0.01	0.30
7.	Transport	7.20	186.75	181.04	168.41	3.15	10.89	0.23	0.79
8.	Communication	3.22	128.62	123.85	122.32	3.85	5.15	0.12	0.17
9.	Recreation & Culture	2.03	166.96	166.69	141.98	0.16	17.59	0.00	0.36
10.	Education	3.94	155.07	154.93	141.09	0.09	9.91	0.00	0.39
11.	Restaurants & Hotels	1.23	204.48	202.44	185.23	1.01	10.39	0.01	0.13
12.	Miscellaneous	2.76	201.76	201.20	182.60	0.28	10.49	0.01	0.29

Main contributors to month-on-month and year-on-year percentage changes are given below and detail is given in Annexure A.

1. **Month-on-month** Top few commodities which varied from previous month i.e. December 2012 are given below:-

Food Items Increased: Tomatoes (61.12%), Wheat (11.32%), Chicken (10.84%), Wheat Flour (9.69%), Wheat Product (8.21%), Rice (3.38%), Cereals (2.63%), Pulse Masoor (2.56%), Fish (2.52%), Pulse Moong (2.39%), Besan (1.85%), Bakery & Confectionary (1.39%), Jam Tomatoe Ketchup & Pickles (1.31%), Gur (1.23%), Eggs (1.05%) and Readymade Food (1.01%).

Decreased: Potatoes (14.55%), Onions (7.62%), Spices (3.43%), Fresh Vegetables (2.45%), Vegetable Ghee (0.89%), Betal Leaves & Nuts (0.68%), Fresh Fruits (0.57%), Pulse Mash (0.33%), Cooking Oil (0.18%) and Mustard Oil (0.15%).

Non-food Items Increased: Motor Fuel (7.02%), Gas (6.13%), Woolen Readymade Garments (4.16%), Communication & Apparatus (3.95%), Firewood Whole (2.35), House Rent (2.04%), Dopatta (1.39%), Medical Equipment (1.28%), Construction Wage Rates (1.15%), Newspaper (1.07%), Tailoring (1.05%), Hosiery (1.04%) and Woolen Cloth (1.02%).

2. **Year-on-year:** Top few commodities which varied from previous year i.e. January 2012 are given below:-

Food Items Increased: Besan (45.49%), Pulse Gram (45.03%), Tomatoes (27.48%), Potatoes (25.34%), Wheat (22.57%), Beans (21.23%), Wheat Flour (20.44%), Honey (20.02%), Rice (18.49%), Cigarettes (18.46%), Wheat Product (14.86%), Milk Powder (14.04%), Milk Fresh (11.55%) and Cooking Oil (11.39%).

Decreased: Onions (40.13%), Spices (10.21%), Pulse Mash (9.49%), Pulse Moong (8.19%), Fresh Vegetables (7.61%), Fresh Fruits (3.86%), Pulse Masoor (3.84%) and Gur (2.86%).

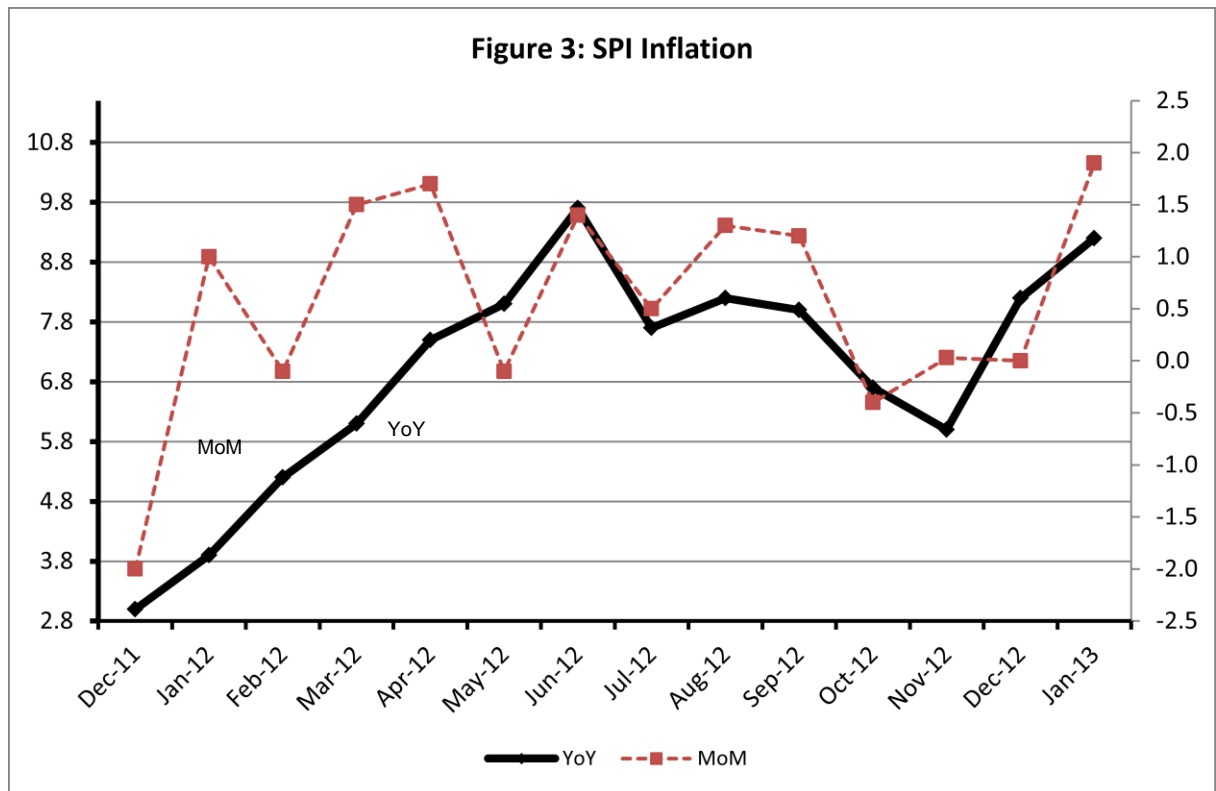
Non-food Items Increased: Text Books (40.54%), Motor Vehicle Tax (27.23%), Woolen Readymade Garments (24.22%), Footwear (20.59%), Dopatta (19.37%), Doctor (MBBS) Clinic Fee (18.78%), Firewood Whole (17.96%), Utensils (17.67%), Electricity (16.39%) and Readymade Garments (16.29%).

Decreased: Gas (46.08%).

III. Sensitive Price Indicator

Quintile-wise percentage changes YoY and MoM are given below in Table 3. The series from December 2011 to January 2013 is also graphed below in Figure 3.

Table 3 : Sensitive Price Indicator (Base 2007-08)					
Quintiles	Indices			% Change Jan 2013 over	
	Jan 2013	Dec 2012	Jan 2012	Dec 2012	Jan 2012
1	185.40	181.91	169.77	1.92	9.21
2	191.66	188.29	172.85	1.79	10.88
3	190.30	187.22	172.56	1.65	10.28
4	191.70	188.65	180.87	1.62	5.99
5	192.05	189.42	185.98	1.39	3.26
Combined	190.89	187.95	178.25	1.56	7.09



IV. Wholesale Price Index

The Wholesale Price Index for January 2013 increased by 1.25% over December 2012. It increased by 8.56% over the corresponding month of the last year. YoY and MoM movements, from December 2011 to January 2013 are also graphed below in Figure 4.

Table 4 : Wholesale Price Index by Group of Commodities (Base 2007-08)

No.	Group	Group Weight (%)	Indices			% Change January 2012 over		Impact (Adjusted) (in %age points) Jan 2013 over	
			Jan 2013	Dec 2012	Jan 2012	Dec 2012	Jan 2012	Dec 2012	Jan 2012
	General	100.00	195.39	192.98	179.99	1.25	8.56	1.25	8.56
1.	Agriculture, Forestry & Fishery Products	25.77	196.33	192.97	180.98	1.74	8.48	0.43	2.41
2.	Ores & Minerals, Electricity, Gas & Water	12.04	216.13	208.45	185.61	3.68	16.44	0.46	2.01
3.	Food Products, Beverages & Tobacco, Textiles, Apparel & Leather Products	31.11	190.57	188.44	172.47	1.13	10.49	0.37	2.88
	i. Food Products, Bev. & Tobacco	20.07	193.40	191.32	176.20	1.09	9.76	0.25	1.76
	ii. Textiles and Apparel	10.33	189.88	187.56	169.38	1.24	12.10	0.12	1.07
	iii. Leather Products	0.71	120.99	119.70	111.99	1.08	8.04	0.01	0.05
4.	Other Transportable Goods except Metal Products, Machinery & Equipments	22.37	204.00	204.13	196.36	-0.06	3.89	0.00	1.02
5.	Metal Products, Machinery & Equipments	8.72	159.07	159.19	154.15	-0.08	3.19	-0.01	0.23

Main contributors to month-on-month and year-on-year percentage changes are given below and detail is given in Annexure B.

1. **Month-on-month** Top few commodities which varied from previous month i.e. December 2012 are given below:-

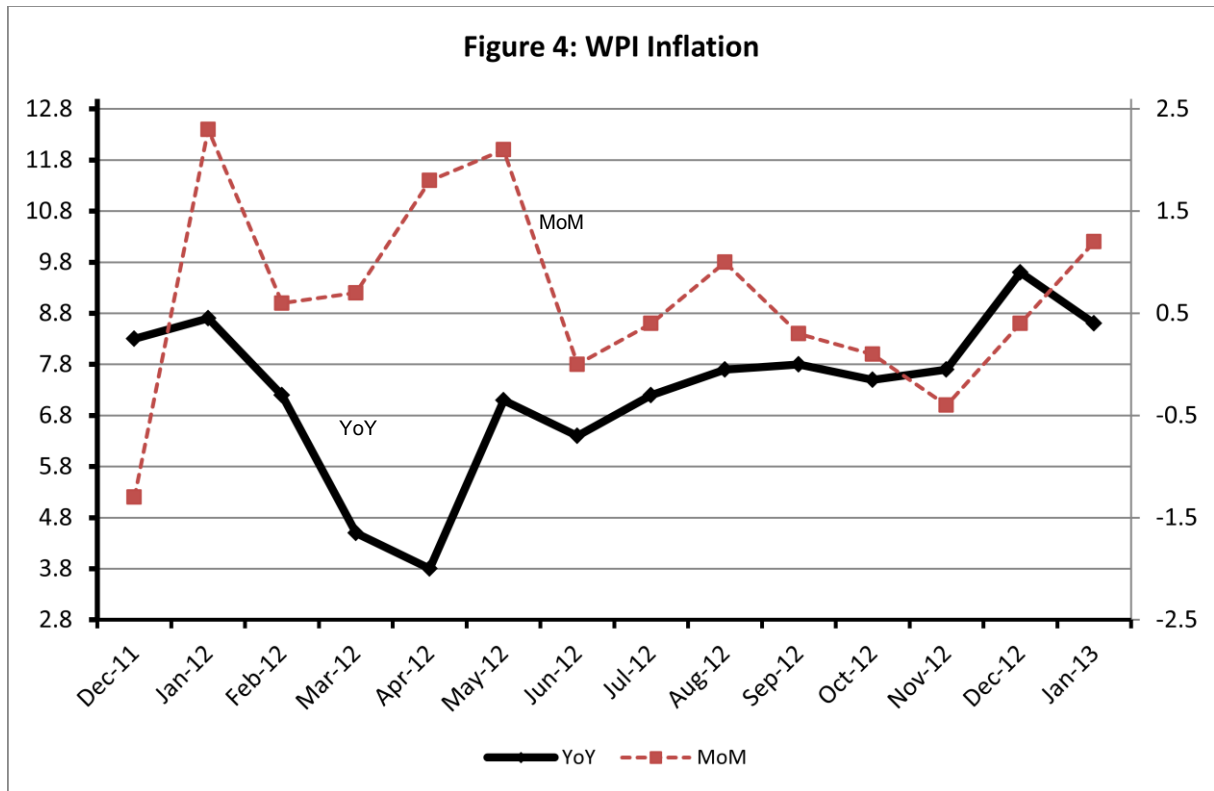
Increased: Coal not agglomerated (14.00%), Poultry (12.92%), Wheat (10.60%), Wheat Flour (9.68%), Millet/Bajra (8.12%), Natural Gas Liquified (6.47%), Fish (5.31%), Footwears (4.39%), Stimulants & Spice Crops (4.08%), Bed Sheets (3.25%), Raw Milk (2.91%), Sorghum/Jowar (2.80%), Bricks, Blocks & Tiles (2.50%) and Maize (2.40%).

Decreased: Edible Roots/Potatoes (15.15%), Spices (9.38%), Eggs (1.31%), Pulses (0.61%), Fertilizers (0.60%), Steel Bars & Sheets (0.58%), Cotton Seeds (0.57%), Rice (0.39%), Dried Fruits & Nuts (0.32%), Chemical (0.31%) and Diesel Oil (0.19%).

2. **Year-on-year** Top few commodities which varied from previous year i.e. January, 2012 are given below:-

Increased: Fresh Fruits (65.05%), Coal not agglomerated (58.33%), Other Cereal Flour (40.42%), Footwears (37.46%), Electrical Energy (36.10%), Fish (33.11%), Paints & Varnishes (30.92%), Hard Board (29.63%), Tobacco Products (25.68%), Bed sheets (23.36%), and Wheat (23.00%).

Decreased: Synthetic Carpets (19.64%), Furnace Oil (19.48%), Vegetables (17.55%), Cotton Seeds (16.49%), Tractors (10.46%), Insecticides (8.49%), Sugar Crops (8.19%), Spices (8.10%), Other Glass Articles (7.25%) and Stimulant & Spice Crops (3.75%).



Annexure A: Consumer Price Index Numbers by Commodity Groups & Commodities (2007 - 2008 = 100)

Item and Specification	Weight	Index Numbers			% Change in Jan 2013 Over	
		Jan 2013	Dec 2012	Jan 2012	Dec 2012	Jan 2012
General	100.000	175.70	172.82	162.58	+ 1.67	+ 8.07
Food & Non-alcoholic Beverages	34.8343	196.52	192.71	182.60	+ 1.98	+ 7.62
01 Wheat	0.3477	198.18	178.02	161.69	+ 11.32	+ 22.57
02 Wheat Flour	4.1648	200.55	182.83	166.51	+ 9.69	+ 20.44
03 Wheat Product	0.0959	186.20	172.08	162.11	+ 8.21	+ 14.86
04 Besan	0.1500	238.28	233.96	163.78	+ 1.85	+ 45.49
05 Rice	1.5821	179.71	173.83	151.67	+ 3.38	+ 18.49
06 Cereals	0.1563	209.94	204.56	188.73	+ 2.63	+ 11.24
07 Bakery & Confectionary	1.1550	178.14	175.69	163.26	+ 1.39	+ 9.11
08 Nimco	0.4574	198.97	197.49	179.01	+ 0.75	+ 11.15
09 Meat	2.4303	219.53	219.05	205.83	+ 0.22	+ 6.66
10 Chicken	1.3596	191.04	172.35	186.93	+ 10.84	+ 2.20
11 Fish	0.2970	201.51	196.55	184.85	+ 2.52	+ 9.01
12 Milk Fresh	6.6800	218.93	218.75	196.26	+ 0.08	+ 11.55
13 Milk Products	0.6338	211.17	210.59	193.33	+ 0.28	+ 9.23
14 Milk Powder	0.1129	185.48	184.69	162.65	+ 0.43	+ 14.04
15 Eggs	0.4555	251.22	248.60	232.34	+ 1.05	+ 8.13
16 Mustard Oil	0.0952	160.75	160.99	154.05	- 0.15	+ 4.35
17 Cooking Oil	1.7538	162.30	162.59	145.70	- 0.18	+ 11.39
18 Vegetable Ghee	2.0714	158.98	160.41	155.25	- 0.89	+ 2.40
19 Dry Fruits	0.2543	211.55	209.67	194.07	+ 0.90	+ 9.01
20 Fresh Fruits	1.8649	179.14	180.16	186.33	- 0.57	- 3.86
21 Pulse Masoor	0.2712	145.66	142.02	151.48	+ 2.56	- 3.84
22 Pulse Moong	0.2336	220.90	215.75	240.61	+ 2.39	- 8.19
23 Pulse Mash (Washed)	0.2098	191.57	192.21	211.66	- 0.33	- 9.49
24 Pulse Gram	0.2361	233.36	231.20	160.90	+ 0.93	+ 45.03
25 Gram Whole	0.1616	225.54	224.64	202.60	+ 0.40	+ 11.32
26 Beans	0.0269	217.23	215.10	179.19	+ 0.99	+ 21.23
27 Potatoes	0.4776	156.92	183.63	125.20	- 14.55	+ 25.34
28 Onion	0.5417	153.88	166.58	257.03	- 7.62	- 40.13
29 Tomatoes	0.4496	209.01	129.72	163.95	+ 61.12	+ 27.48
30 Fresh Vegetables	1.6571	179.49	183.99	194.27	- 2.45	- 7.61
31 Sugar	1.0445	192.83	192.72	186.97	+ 0.06	+ 3.13
32 Gur	0.0220	225.19	222.46	231.81	+ 1.23	- 2.86
33 Honey	0.0446	254.80	252.31	212.30	+ 0.99	+ 20.02
34 SweetMeat	0.2483	207.27	206.12	196.16	+ 0.56	+ 5.66
35 Beverages	1.1990	169.71	168.52	158.52	+ 0.71	+ 7.06
36 Jam, Tomato Ketchup & Pickles	0.2454	181.23	178.89	170.55	+ 1.31	+ 6.26
37 Condiments	0.2656	214.25	213.27	202.08	+ 0.46	+ 6.02
38 Spices	0.5441	248.13	256.95	276.35	- 3.43	- 10.21
39 Tea	0.8377	220.38	218.28	201.70	+ 0.96	+ 9.26
Alcoholic Beverages, Tobacco	1.4135	191.17	191.04	161.68	+ 0.07	+ 18.24
40 Cigarettes	1.3906	191.31	191.16	161.50	+ 0.08	+ 18.46
41 Betel Leaves & Nuts	0.0229	182.64	183.89	172.97	- 0.68	+ 5.59
Clothing & Footwear	7.5708	177.05	175.58	153.60	+ 0.84	+ 15.27
42 Cotton Cloth	1.7286	162.20	161.67	149.71	+ 0.33	+ 8.34
43 Woolen Cloth	0.8759	197.86	195.87	173.31	+ 1.02	+ 14.17
44 Readymade Garments	0.9739	176.04	174.96	151.38	+ 0.62	+ 16.29
45 Woolen Readymade Garments	0.3964	192.09	184.41	154.64	+ 4.16	+ 24.22
46 Hosiery	0.5094	187.80	185.86	164.94	+ 1.04	+ 13.86
47 Dopatta	0.4412	195.26	192.59	163.57	+ 1.39	+ 19.37
48 Cleaning and Laundry	0.2110	196.18	195.35	170.41	+ 0.42	+ 15.12
49 Tailoring	0.8840	208.79	206.63	180.44	+ 1.05	+ 15.71
50 Footwear	1.5504	149.25	149.16	123.77	+ 0.06	+ 20.59

Annexure A: Consumer Price Index Numbers by Commodity Groups & Commodities (2007 - 2008 = 100)

Item and Specification	Weight	Index Numbers			% Change in Jan 2013 Over			
		Jan 2013	Dec 2012	Jan 2012	Dec 2012	Jan 2012		
Housing, Water, Elec., Gas, Other	29.4149	152.73	150.10	147.43	+	1.75	+	3.59
51 House Rent	21.8149	142.46	139.61	133.31	+	2.04	+	6.86
52 Construction Input Items	0.5623	203.39	203.13	187.50	+	0.13	+	8.47
53 Construction Wage Rates	0.3331	174.67	172.69	155.90	+	1.15	+	12.04
54 Water Supply	0.4971	134.90	134.90	129.32	+	0.00	+	4.31
55 Electricity	4.3985	196.37	196.37	168.71	+	0.00	+	16.39
56 Gas	1.5756	142.58	134.34	264.42	+	6.13	-	46.08
57 Kerosene Oil	0.0057	274.86	272.53	239.67	+	0.85	+	14.68
58 Firewood Whole	0.2277	242.39	236.83	205.48	+	2.35	+	17.96
Furnished H.Hold Equip.& House	4.2082	180.97	180.08	162.82	+	0.49	+	11.15
59 Furniture	0.3315	170.15	169.13	152.83	+	0.60	+	11.33
60 Household Textiles	0.6489	177.05	176.21	158.57	+	0.48	+	11.65
61 Household Equipment	0.5936	158.42	158.25	149.60	+	0.11	+	5.90
62 Utensils	0.3212	178.48	177.63	151.68	+	0.48	+	17.67
63 Plastic Products	0.2547	175.86	175.69	165.86	+	0.10	+	6.03
64 Washing Soaps & Detergents	0.7893	195.92	195.07	177.47	+	0.44	+	10.40
65 Sewing Needle & Dr Cell	0.1496	152.13	151.84	139.69	+	0.19	+	8.91
66 Household Servant	1.0432	193.59	191.93	170.44	+	0.86	+	13.58
67 Marriage Hall Charges	0.0762	193.63	193.63	171.66	+	0.00	+	12.80
Health	2.1868	157.50	156.76	138.53	+	0.47	+	13.69
68 Drugs & Medicines	1.2667	139.04	138.76	124.82	+	0.20	+	11.39
69 Medical Equipments	0.0080	200.84	198.31	176.31	+	1.28	+	13.91
70 Doctor (MBBS) Clinic Fee	0.5904	196.28	194.63	165.24	+	0.85	+	18.78
71 Medical Tests	0.3217	157.96	157.07	142.52	+	0.57	+	10.83
Transport	7.2023	186.75	181.04	168.41	+	3.15	+	10.89
72 Motor Vehicles	0.6630	153.42	152.89	142.31	+	0.35	+	7.81
73 Motor Vehicle Accessories	0.2439	211.06	209.17	192.11	+	0.90	+	9.86
74 Motor Fuel	3.0269	184.37	172.28	165.25	+	7.02	+	11.57
75 Mechanical Service	0.4552	185.06	184.20	163.10	+	0.47	+	13.46
76 Motor Vehicle Tax	0.1099	152.02	152.02	119.48	+	0.00	+	27.23
77 Transport Services	2.7034	197.09	195.85	179.08	+	0.63	+	10.06
Communication	3.2198	128.62	123.85	122.32	+	3.85	+	5.15
78 Postal Services	0.0662	174.47	173.52	165.45	+	0.55	+	5.45
79 Communication & Apparatus	3.1536	127.65	122.80	121.42	+	3.95	+	5.13
Recreation & Culture	2.0227	166.96	166.69	141.98	+	0.16	+	17.59
80 Recreation & Culture	0.8634	122.30	122.16	117.15	+	0.11	+	4.40
81 Text Books	0.5706	231.06	231.05	164.41	+	0.00	+	40.54
82 Newspapers	0.1934	157.59	155.92	149.97	+	1.07	+	5.08
83 Stationery	0.3953	176.55	176.31	159.91	+	0.14	+	10.41
Education	3.9431	155.07	154.93	141.09	+	0.09	+	9.91
84 Education	3.9431	155.07	154.93	141.09	+	0.09	+	9.91
Restaurants & Hotels	1.2286	204.48	202.44	185.23	+	1.01	+	10.39
85 Readymade Food	1.2286	204.48	202.44	185.23	+	1.01	+	10.39
Miscellaneous Goods & Services	2.7550	201.76	201.20	182.60	+	0.28	+	10.49
86 Personal Care	1.4935	180.95	180.05	164.75	+	0.50	+	9.83
87 Cosmetics	0.3853	149.85	149.65	141.75	+	0.13	+	5.71
88 Blades	0.0322	174.21	173.53	160.44	+	0.39	+	8.58
89 Personal Equipments	0.8440	263.31	263.21	233.66	+	0.04	+	12.69

Annexure B: Wholesale Price Indices by Major Groups and Commodities

(2007 - 2008 = 100)

Item and Specification	Weight	Index Numbers			% Change in Jan 2013 Over			
		Jan 2013	Dec 2012	Jan 2012	Dec 2012	Jan 2013	Over 2012	
General	100.0000	195.39	192.98	179.99	+	1.25	+	8.56
Agriculture Forestry &	25.7674	196.33	192.97	180.98	+	1.74	+	8.48
001 Wheat	0.6297	205.59	185.88	167.14	+	10.60	+	23.00
002 Maize	0.6764	169.08	165.11	149.52	+	2.40	+	13.08
003 Rice	2.4413	163.12	163.76	150.11	-	0.39	+	8.67
004 Sorghum/Jowar	0.0214	203.64	198.10	183.37	+	2.80	+	11.05
005 Millet/Bajra	0.0374	170.64	157.83	144.52	+	8.12	+	18.07
006 Vegetables	1.2441	188.53	185.19	228.66	+	1.80	-	17.55
007 Fresh Fruits	1.5144	210.03	207.91	127.25	+	1.02	+	65.05
008 Dry Fruits	0.2478	182.41	179.38	187.31	+	1.69	-	2.62
009 Cotton Seeds	1.1511	165.83	166.78	198.57	-	0.57	-	16.49
010 Other Oil Seeds	0.0722	187.70	186.07	170.57	+	0.88	+	10.04
011 Edible Roots/Potatoes	0.2540	149.42	176.09	127.69	-	15.15	+	17.02
012 Stimulant and Spice Crops	0.1634	177.23	170.28	184.13	+	4.08	-	3.75
013 Pulses	0.4901	206.62	207.89	205.53	-	0.61	+	0.53
014 Sugar Crops	1.0725	267.92	267.92	291.82	+	0.00	-	8.19
015 Fibre Crops	5.3169	179.31	179.31	178.29	+	0.00	+	0.57
016 Unmanufactured Tobacco	0.0742	169.08	169.08	167.91	+	0.00	+	0.70
017 Poultry	0.5633	197.99	175.34	199.73	+	12.92	-	0.87
018 Raw Milk from Bovine Animals	7.0279	219.99	213.76	188.73	+	2.91	+	16.56
019 Eggs	0.5034	247.18	250.45	246.45	-	1.31	+	0.30
020 Raw Animal Materials/Wool	0.0351	137.58	137.58	134.64	+	0.00	+	2.18
021 Hides and Fur Skins, Raw	0.4834	139.23	138.82	135.35	+	0.30	+	2.87
022 Fuel Wood in Logs	0.0179	218.79	216.60	190.28	+	1.01	+	14.98
023 Fish Live Fresh or Chilled	1.7295	187.55	178.10	140.90	+	5.31	+	33.11
Ores/Minerals, Elec., Gas &	12.0389	216.13	208.45	185.61	+	3.68	+	16.44
024 Coal not Agglomerated	0.7508	223.53	196.08	141.18	+	14.00	+	58.33
025 Natural Gas Liquified	5.7385	206.15	193.63	210.37	+	6.47	-	2.01
026 Salt and Pure Sodium Chloride	0.0584	164.98	164.54	156.20	+	0.27	+	5.62
027 Electrical Energy	5.4912	226.10	226.10	166.13	+	0.00	+	36.10
Food, Beverages, Tobacco, Te	31.1122	190.57	188.44	172.47	+	1.13	+	10.49
Food Products, Beverages	20.0718	193.40	191.32	176.20	+	1.09	+	9.76
028 Meat of Animals	3.4559	229.17	228.57	216.96	+	0.26	+	5.63
029 Vegetables and Fruit Juice	0.0058	189.09	188.52	176.84	+	0.30	+	6.93
030 Dried Fruits and Nuts	0.1733	223.34	224.06	201.73	-	0.32	+	10.71
031 Fruit Juices	0.3880	157.91	157.91	155.01	+	0.00	+	1.87
032 Vegetable Oils Refined	1.9242	157.28	156.05	150.74	+	0.79	+	4.34
033 Vegetable Ghee	1.5632	140.11	139.95	139.02	+	0.11	+	0.78
034 Oil Cakes	0.9611	173.15	172.67	147.65	+	0.28	+	17.27
035 Processed Liquid Milk	4.4437	208.43	208.43	183.49	+	0.00	+	13.59
036 Milk and Cream in Solid Form	0.0316	171.59	171.59	165.64	+	0.00	+	3.59
037 Ice Cream	0.0047	167.68	167.68	153.30	+	0.00	+	9.38
038 Dairy Products N.E.C	0.0117	204.91	204.91	186.79	+	0.00	+	9.70
039 Wheat Flour	2.3034	184.41	168.13	153.41	+	9.68	+	20.21
040 Other Cereal Flour	0.0604	202.00	200.17	143.85	+	0.91	+	40.42
041 Sugar Refined	1.7975	201.05	199.74	194.56	+	0.66	+	3.34
042 Chocolate	0.0139	99.19	99.19	100.26	+	0.00	-	1.07
043 Sugar Confectionary	0.0738	102.28	100.40	100.40	+	1.87	+	1.87
044 Coffee and Tea	0.7303	200.60	199.81	191.76	+	0.40	+	4.61
045 Spices	0.1449	273.27	301.56	297.35	-	9.38	-	8.10
046 Other Food Products	0.0336	319.52	319.27	319.57	+	0.08	-	0.02
047 Mineral Water	0.0207	168.32	168.32	165.15	+	0.00	+	1.92
048 Beverages	0.6303	137.86	137.86	133.61	+	0.00	+	3.18
049 Tobacco Products	1.2998	208.80	208.80	166.13	+	0.00	+	25.68
Textiles & Apparels	10.3289	189.88	187.56	169.38	+	1.24	+	12.10
050 Cotton Yarn	5.2491	214.74	211.22	187.99	+	1.67	+	14.23
051 Nylon Yarn	0.1719	180.86	178.80	181.01	+	1.15	-	0.08
052 Blended Yarn	0.1689	194.85	192.45	184.74	+	1.25	+	5.47
053 Woven Fabrics	0.0128	206.00	206.00	169.77	+	0.00	+	21.34
054 Cotton Fabrics	0.6343	174.17	174.17	167.56	+	0.00	+	3.94
055 Other Fabrics	1.1016	165.62	165.62	154.60	+	0.00	+	7.13
056 Silk and Reyon Fabrics	0.7350	154.21	154.21	138.40	+	0.00	+	11.42
057 Towels	0.1235	203.06	203.06	178.07	+	0.00	+	14.03

Annexure B: Wholesale Price Indices by Major Groups and Commodities

(2007 - 2008 = 100)

Item and Specification	Weight	Index Numbers			% Change in Jan 2013 Over			
		Jan 2013	Dec 2012	Jan 2012	Dec 2012	Jan 2013	Over 2012	
058 Blankets	0.0029	185.21	184.97	152.21	+	0.13	+	21.68
059 Bed Sheets	0.0913	204.38	197.94	165.68	+	3.25	+	23.36
060 Quilts	0.0019	152.84	151.68	147.05	+	0.76	+	3.94
061 Woolen Carpets	0.0383	106.55	106.55	103.57	+	0.00	+	2.88
062 Synthetic Carpets	0.0566	114.41	114.41	142.37	+	0.00	-	19.64
063 Hosiery Products	0.8832	181.12	178.65	154.19	+	1.38	+	17.47
064 Readymade Garments	1.0576	138.14	136.27	126.53	+	1.37	+	9.18
Leather Products	0.7115	120.99	119.70	111.99	+	1.08	+	8.04
065 Leather without Hair	0.2973	109.83	109.83	109.90	+	0.00	-	0.06
066 Other Leather N.E.C	0.2567	122.57	122.57	120.85	+	0.00	+	1.42
067 Footwears	0.1575	139.49	133.63	101.48	+	4.39	+	37.46
Other Transportable Goods	22.3659	204.00	204.13	196.36	-	0.06	+	3.89
068 Timber	0.0165	148.36	148.36	138.08	+	0.00	+	7.44
069 Printing Paper	0.4279	155.35	155.35	129.31	+	0.00	+	20.14
070 Hard Board	0.1579	194.44	194.44	150.00	+	0.00	+	29.63
071 Coke	0.2797	163.45	163.45	163.45	+	0.00	+	0.00
072 Motor Spirit	1.5336	172.73	171.33	151.25	+	0.82	+	14.20
073 Diesel Oil	5.2664	261.36	261.87	238.14	-	0.19	+	9.75
074 Kerosine Oil	0.2151	264.94	263.47	237.92	+	0.56	+	11.36
075 Furnace Oil	3.2664	168.81	168.81	209.64	+	0.00	-	19.48
076 Mobil Oil	0.7114	184.85	184.45	171.60	+	0.22	+	7.72
077 Chemicals	1.7720	156.16	156.65	146.30	-	0.31	+	6.74
078 Dyeing Material	0.1539	104.26	104.26	107.06	+	0.00	-	2.62
079 Fertilizers	2.8657	259.68	261.25	269.32	-	0.60	-	3.58
080 Pesticides	0.2763	197.49	197.49	165.65	+	0.00	+	19.22
081 Insecticides	0.1276	117.42	117.42	128.31	+	0.00	-	8.49
082 Paints and Varnishes	0.1916	238.30	237.48	182.02	+	0.35	+	30.92
083 Medicines	1.1428	139.54	139.54	113.92	+	0.00	+	22.49
084 Soaps and Detergents	0.8168	168.41	168.41	153.22	+	0.00	+	9.91
085 Auto Tyres	0.2703	180.99	180.84	173.27	+	0.08	+	4.46
086 Plastic Products	0.4550	192.40	191.35	179.60	+	0.55	+	7.13
087 Glass sheets	0.2089	190.93	190.93	171.03	+	0.00	+	11.64
088 Other Glass Articles	0.1635	191.72	191.72	206.71	+	0.00	-	7.25
089 Ceramics and Sanitary Fixture	0.0244	157.45	157.32	133.14	+	0.08	+	18.26
090 Bricks, Blocks and Tiles	0.1566	177.53	173.20	169.58	+	2.50	+	4.69
091 Cement	1.8145	187.78	187.19	158.11	+	0.32	+	18.77
092 Bed Foam	0.0006	142.83	141.17	127.00	+	1.18	+	12.46
093 Matches	0.0505	133.50	133.50	119.42	+	0.00	+	11.79
Metal Product, Machinery &	8.7156	159.07	159.19	154.15	-	0.08	+	3.19
094 Pig Iron	0.0593	128.97	128.97	128.97	+	0.00	+	0.00
095 Steel Bar and Sheets	1.4022	132.75	133.53	132.48	-	0.58	+	0.20
096 Pipe Fittings	0.0780	141.47	141.47	140.52	+	0.00	+	0.68
097 Steel Products	0.3879	161.94	161.94	157.51	+	0.00	+	2.81
098 Engines and Motors	0.0046	109.07	109.07	109.07	+	0.00	+	0.00
099 Vacuum Pumps	0.0155	115.39	115.39	115.39	+	0.00	+	0.00
100 Air Conditioners	0.0049	172.67	172.67	163.59	+	0.00	+	5.55
101 Cultivators	0.0551	189.23	189.23	184.66	+	0.00	+	2.47
102 Chuff Cutter	0.1293	138.54	138.54	131.08	+	0.00	+	5.69
103 Tractors	0.0028	161.96	161.96	180.89	+	0.00	-	10.46
104 Lathe Machines	0.0525	147.68	147.68	147.51	+	0.00	+	0.12
105 Concrete Mixture	0.0107	138.83	138.83	138.83	+	0.00	+	0.00
106 Fridge,WashM,SewM,Fans,Iro	1.1645	166.45	166.45	163.41	+	0.00	+	1.86
107 Electric Wires	0.0912	159.57	159.57	163.22	+	0.00	-	2.24
108 Lighting Equipments	1.4431	148.26	148.22	142.85	+	0.03	+	3.79
109 Radio and Television	0.1843	126.46	126.46	131.33	+	0.00	-	3.71
110 Motor Vehicles	0.0244	173.75	171.79	157.53	+	1.14	+	10.30
111 Motorcycles	0.2570	125.19	125.19	123.29	+	0.00	+	1.54
112 Bicycles	3.3483	177.87	177.87	169.33	+	0.00	+	5.04