



# Monthly Review on Price Indices



**February, 2013**  
**(Base 2007-08)**

**Government of Pakistan**  
**Statistics Division**  
**Pakistan Bureau of Statistics**  
**Islamabad**



## I. Inflation in Brief

1. CPI inflation, General, increased by 7.4% on year-on-year basis in February 2013 as compared to 8.1% in the previous month and 11.0% in February 2012. On month-on-month basis, it decreased by 0.3% in February 2013 as compared to an increase of 1.7% in the previous month and 0.3% in February 2012.
2. Core inflation measured by non-food non-energy CPI (Core NFNE) increased by 9.6% in February 2013 as compared to 9.9% in January 2013 (YoY) and by 10.6% in February 2012. Core NFNE inflation on MoM basis increased by 0.4% in February 2013 as compared to 1.2% a month earlier and 0.7% in February 2012.
3. Core inflation, measured by 20% weighted trimmed mean CPI (Core Trimmed) increased by 9.2% in February 2013 and by 9.9% in January 2013 (YoY) which increased by 10.7% in February 2012. Core Trimmed inflation has increased by 0.2% on MoM basis in February 2013 as compared to 1.0% in January 2013 which increased by 0.5% in February 2012.
4. SPI inflation on YoY basis increased by 9.4% in February 2013 compared with 9.2% a month earlier and 5.2% in February 2012. On MoM basis, it increased by 0.1% in February 2013 as compared to an increase of 1.9% a month earlier and decreased by -0.1% in February 2012.
5. WPI inflation on YoY basis increased to 8.3% in February 2013 compared with 8.6% a month earlier and 7.2% in February 2012. WPI inflation on MoM basis increased by 0.3% in February 2013 as compared to an increase of 1.2% a month earlier and increased by 0.6% in February 2012.
6. Figures 1 and 2 show graphically the data of Table 1. Table 1.1 shows "Period Average" and "YoY" percent changes in indices of three years.

**Table 1: Inflation (%) (Base 2007-08)**

Period	CPI						Core Inflation				SPI**		WPI	
	General		Food		Non-food		NFNE*		Trimmed		YoY	MoM	YoY	MoM
	YoY	MoM	YoY	MoM	YoY	MoM	YoY	MoM	YoY	MoM				
Jan 12	10.1	1.5	9.2	1.5	10.7	1.6	10.2	1.1	10.4	0.8	3.9	1.0	8.7	2.3
Feb 12	11.0	0.3	10.5	-0.7	11.5	1.0	10.6	0.7	10.7	0.5	5.2	-0.1	7.2	0.6
Mar 12	10.8	1.2	9.8	1.5	11.5	0.9	10.8	1.0	10.5	0.8	6.1	1.5	4.5	0.7
Apr 12	11.3	1.8	10.7	2.2	11.6	1.6	10.8	1.4	11.0	1.3	7.5	1.7	3.8	1.8
May 12	12.3	1.1	11.3	0.2	13.1	1.9	11.1	0.8	11.7	0.5	8.1	-0.1	7.1	2.1
Jun 12	11.3	0.0	10.3	-0.2	12.0	0.2	11.4	0.7	11.1	0.5	9.7	1.4	6.4	0.0
Jul 12	9.6	-0.2	9.1	1.8	10.0	-1.7	11.3	1.0	10.7	0.7	7.7	0.5	7.2	0.4
Aug 12	9.1	0.9	8.5	0.9	9.4	0.9	10.8	0.3	10.6	0.4	8.2	1.3	7.7	1.0
Sep 12	8.8	0.8	7.6	0.7	9.7	0.9	10.4	0.4	10.4	0.5	8.0	1.2	7.8	0.3
Oct 12	7.7	0.4	5.8	-0.1	9.1	0.7	10.1	1.2	9.7	0.7	6.7	-0.4	7.5	0.1
Nov 12	6.9	-0.4	5.3	-0.3	8.1	-0.4	9.7	0.2	8.8	0.2	6.0	0.0 <sup>1</sup>	7.7	-0.4
Dec 12	7.9	0.2	7.7	0.0 <sup>2</sup>	8.1	0.4	9.8	0.5	9.2	0.3	8.2	0.0 <sup>3</sup>	9.6	0.4
Jan 13	8.1	1.7	8.1	1.9	8.1	1.5	9.9	1.2	9.9	1.0	9.2	1.9	8.6	1.2
Feb 13	7.4	-0.3	7.4	-1.3	7.4	0.3	9.6	0.4	9.2	0.2	9.4	0.1	8.3	0.3

\*NFNE is non-food non-energy, \*\* SPI for quintile 1 ,

<sup>2</sup> Actual figure is 0.04, displayed in rounded figure ,

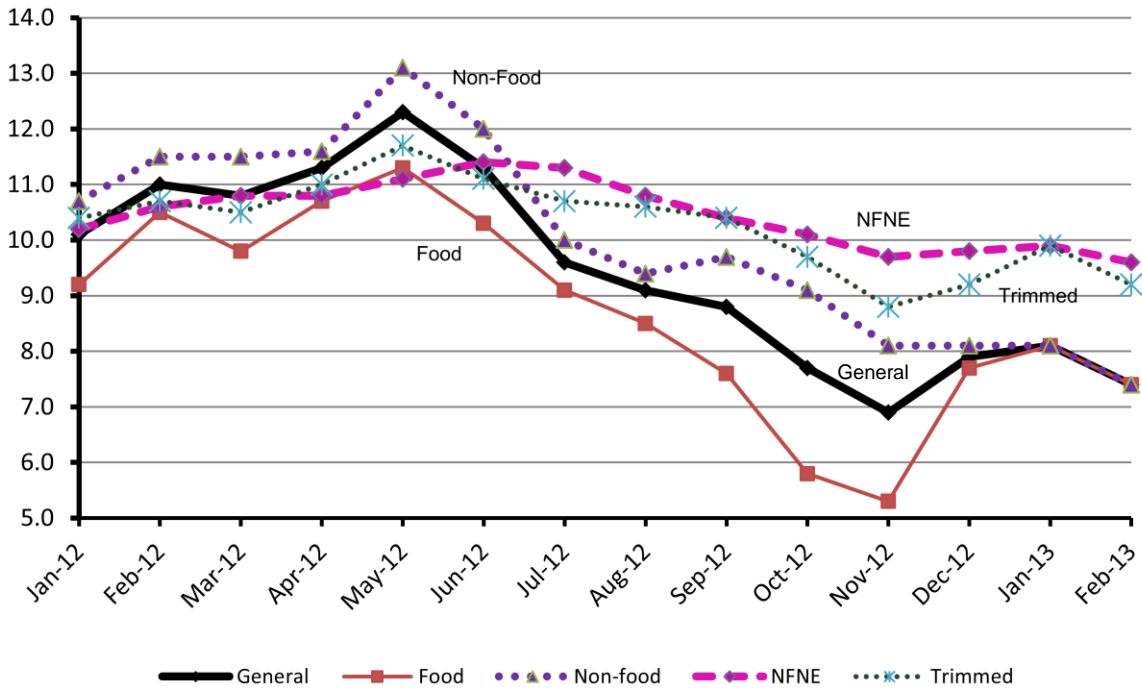
<sup>1</sup> Actual figure is 0.03, displayed in rounded figure

<sup>3</sup> Actual figure is 0.05, displayed in rounded figure

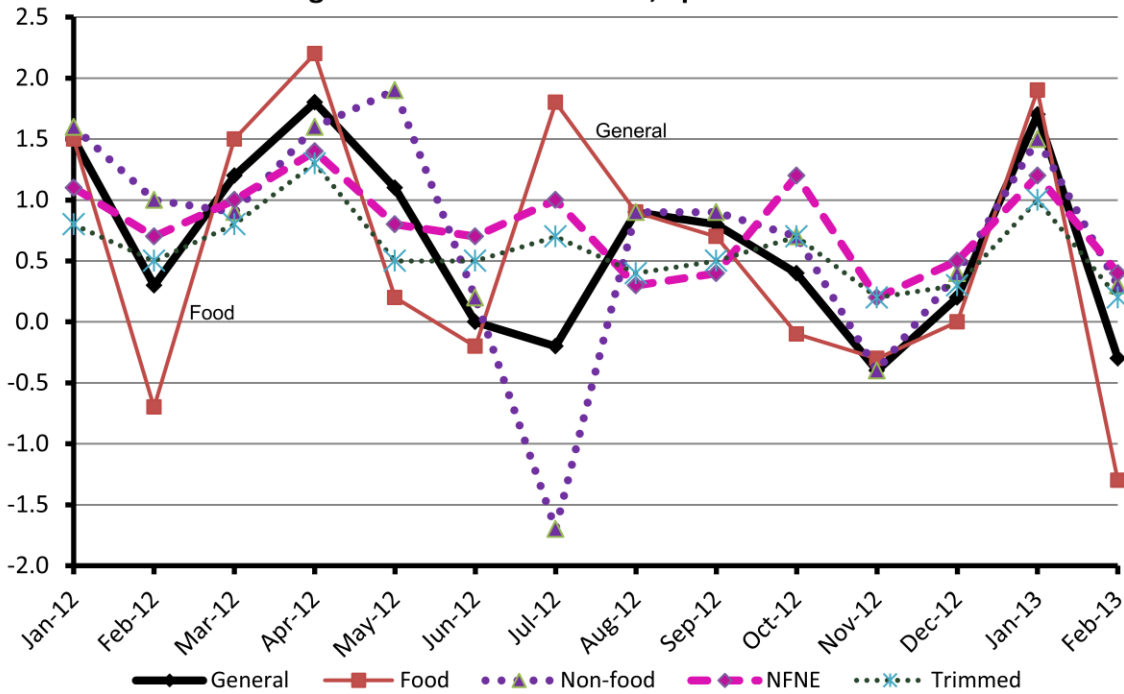
**Table 1.1 : Period Average and YoY % Changes of Indices (Base 2007-08)**

Index	Averages July-February % Changes			February over February % Changes		
	2012-13	2011-12	2010-11	2012-13	2011-12	2010-11
CPI	8.16	10.79	14.08	7.38	11.05	12.85
SPI	7.93	6.69	17.97	9.42	5.22	15.28
WPI	8.07	13.23	19.99	8.33	7.21	22.10

**Figure 1: CPI Inflation YoY, Special Indices**



**Figure 2: CPI Inflation MoM, Special Indices**



## II. Consumer Price Index (CPI)

The Consumer Price Index of February, 2013 has decreased by 0.34% over January, 2013 and increased by 7.38% over corresponding month of last year.

**Table 2 : Consumer Price Index by Group of Commodities and Services (Base 2007-08)**

No	Group	Group Weight (%)	Indices			% Change Feb 2013 over		Impact (Adjusted) (In % points) Feb 2013 over	
			Feb 2013	Jan 2013	Feb 2012	Jan 2013	Feb 2012	Jan 2013	Feb 2012
	General	100.00	175.11	175.70	163.07	-0.34	7.38	-0.34	7.38
1.	Food & Non-alcoholic Bev.	34.83	193.70	196.52	181.19	-1.43	6.90	-0.57	2.40
	<i>Non-perishable Food Items</i>	29.84	198.29	199.77	181.97	-0.74	8.97	-0.24	2.70
	<i>Perishable Food Items</i>	4.99	166.26	177.08	176.55	-6.11	-5.83	-0.33	-0.29
2.	Alcoholic Bev.& Tobacco	1.41	191.17	191.17	161.27	0.00	18.54	0.00	0.26
3.	Clothing & Footwear	7.57	178.43	177.05	154.19	0.78	15.72	0.06	1.20
4.	Housing, Water, Electricity, Gas & Fuels	29.41	152.79	152.73	147.59	0.04	3.52	0.01	1.04
5.	Furnishing & Household Equipment Maintenance	4.21	181.91	180.97	165.48	0.52	9.93	0.02	0.42
6.	Health	2.19	158.02	157.50	139.60	0.33	13.19	0.01	0.29
7.	Transport	7.20	188.35	186.75	174.98	0.86	7.64	0.07	0.55
8.	Communication	3.22	128.63	128.62	122.34	0.01	5.14	0.00	0.17
9.	Recreation & Culture	2.03	167.30	166.96	143.03	0.20	16.97	0.00	0.35
10.	Education	3.94	155.83	155.07	143.82	0.49	8.35	0.02	0.33
11.	Restaurants & Hotels	1.23	207.28	204.48	188.82	1.37	9.78	0.02	0.12
12.	Miscellaneous	2.76	202.74	201.76	186.70	0.49	8.59	0.01	0.24

Main contributors to month-on-month and year-on-year percentage changes are given below and detail is given in Annexure A.

1. **Month-on-month** Top few commodities which varied from previous month i.e. January 2013 are given below:-

**Food Items Increased:** Onions (13.67%), Wheat Product (1.72%), Readymade Food (1.37%), Tea (1.26%), Mustard Oil (1.08%), Bakery & Confectionary (1.06%), Rice (1.04%), Nimco (0.69%), Dry Fruits and Wheat (0.67% each), Pulse Masoor (0.63%) and Fish (0.58%).

**Decreased:** Eggs (28.20%), Tomatoes (13.19%), Fresh Vegetables (12.89%), Potatoes (8.47%), Chicken (4.89%), Spices (2.73%), Fresh Fruits (2.48%), Gur (2.10%), Sugar (2.05%), Gram whole (1.37%), Pulse Gram (0.97%) and Vegetable Ghee (0.92%).

**Non-food Items Increased:** Transport Services (2.25%), Firewood whole (1.60%), Cleaning & Laundry (1.24%), Tailoring (1.21%), Woolen Cloth (1.17%), Washing Soaps & Detergent (1.04%), Cotton Cloth (0.87%), Motor Vehicles (0.85%), Plastic Products and Stationery (0.83% each).

**Decreased:** Motor Fuel (0.36%) and Cosmetics (0.30%).

2. **Year-on-year:** Top few commodities which varied from previous year i.e. February 2012 are given below:-

**Food Items Increased:** Pulse Gram (43.17%), Besan (42.66%), Wheat (22.40%), Wheat Flour (19.84%), Rice (19.19%), Cigarettes (18.75%), Honey (18.65%), Beans (17.67%), Potatoes (16.95%), Wheat Product (16.40%) and Tomatoes (16.08%).

**Decreased:** Onions (25.96%), Spices (12.10%), Eggs (11.55%), Fresh Vegetables (11.01%), Pulse Mash ( 8.26%), Chicken (5.93%), Pulse Moong (5.21%), Pulse Masoor (3.06%), Fresh Fruits (2.19%), and Gur (1.00%).

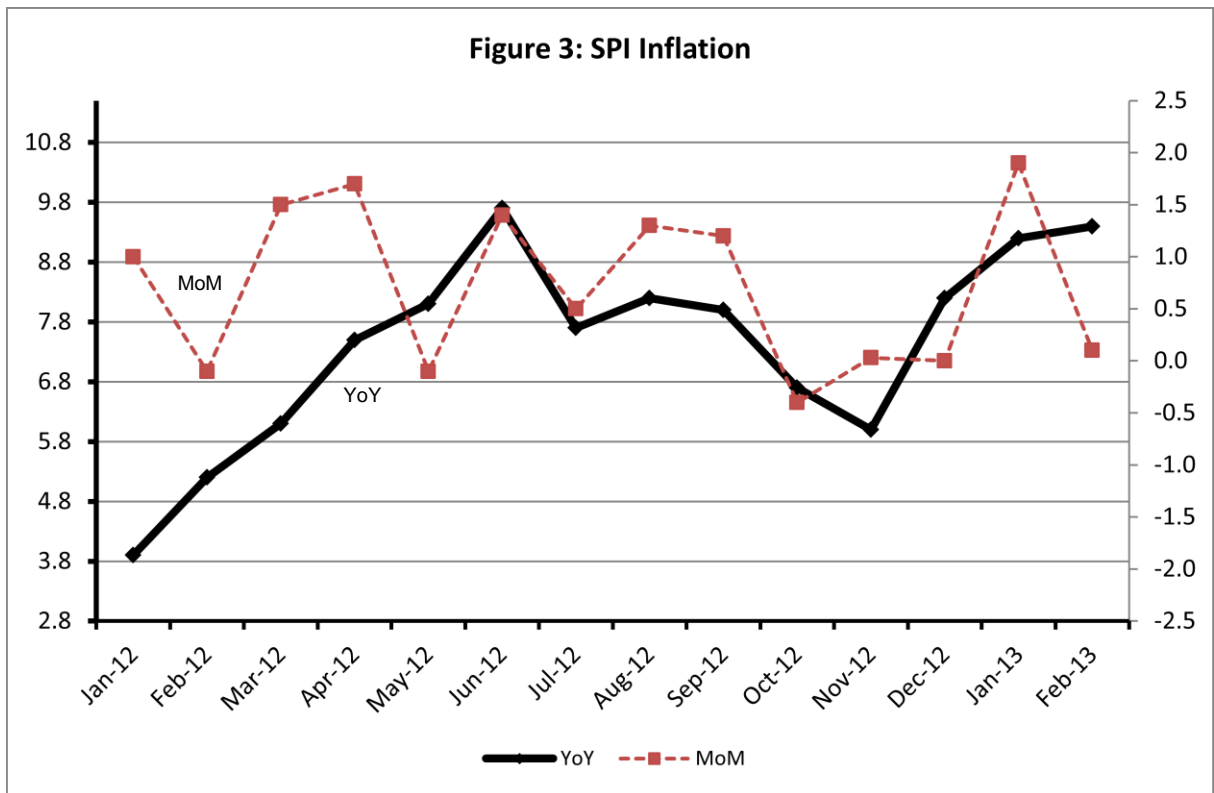
**Non-food Items Increased:** Text Books (40.53%), Motor Vehicle Tax (21.70%), Footwear (20.84%), Dopatta (19.96%), Woolen Readymade Garments (19.07%), Cleaning & Laundry (18.21%), Doctor (MBBS) Clinic Fee (17.03%), Electricity (16.39%), Readymade Garments (15.52%) and Utensils (15.50%).

**Decreased:** Gas (46.08%).

### III. Sensitive Price Indicator

Quintile-wise percentage changes YoY and MoM are given below in Table 3. The series from January 2012 to February 2013 is also graphed below in Figure 3.

Table 3 : Sensitive Price Indicator (Base 2007-08)					
Quintiles	Indices			% Change Feb 2013 over	
	Feb 2013	Jan 2013	Feb 2012	Jan 2013	Feb 2012
1	185.53	185.40	169.56	0.07	9.42
2	191.63	191.66	172.79	-0.02	10.90
3	190.18	190.30	172.60	-0.06	10.19
4	191.51	191.70	181.14	-0.10	5.72
5	191.94	192.05	186.80	-0.06	2.75
Combined	190.79	190.89	178.63	-0.05	6.81



## IV. Wholesale Price Index

The Wholesale Price Index for February 2013 increased by 0.34% over January 2013. It increased by 8.33% over the corresponding month of the last year. YoY and MoM movements, from January 2013 to February 2013 are also graphed below in Figure 4.

**Table 4 : Wholesale Price Index by Group of Commodities (Base 2007-08)**

No.	Group	Group Weight (%)	Indices			% Change February 2013 over		Impact (Adjusted) (in %age points) Feb 2013 over	
			Feb 2013	Jan 2013	Feb 2012	Jan 2013	Feb 2012	Jan 2013	Feb 2012
	<b>General</b>	<b>100.00</b>	<b>196.06</b>	<b>195.39</b>	<b>180.99</b>	<b>0.34</b>	<b>8.33</b>	<b>0.34</b>	<b>8.33</b>
1.	Agriculture, Forestry & Fishery Products	25.77	198.37	196.33	179.07	1.04	10.78	0.28	2.80
2.	Ores & Minerals, Electricity, Gas & Water	12.04	215.52	216.13	187.55	-0.28	14.91	-0.03	1.83
3.	Food Products, Beverages & Tobacco, Textiles, Apparel & Leather Products	31.11	190.68	190.57	173.34	0.06	10.00	0.02	2.79
	i. Food Products, Bev. & Tobacco	20.07	193.05	193.40	175.84	-0.18	9.79	-0.02	1.80
	ii. Textiles and Apparel	10.33	190.87	189.88	172.71	0.52	10.51	0.04	0.94
	iii. Leather Products	0.71	120.99	120.99	112.03	0.00	8.00	0.00	0.05
4.	Other Transportable Goods except Metal Products, Machinery & Equipments	22.37	204.80	204.00	200.50	0.31	2.14	0.07	0.70
5.	Metal Products, Machinery & Equipments	8.72	159.08	159.07	154.87	0.01	2.72	0.00	0.20

Main contributors to month-on-month and year-on-year percentage changes are given below and detail is given in Annexure B.

1. **Month-on-month** Top few commodities which varied from previous month i.e. January 2013 are given below:-

**Increased:** Fibre Crops (11.11%), Stimulants & Spice Crops (6.51%), Maize (5.45%), Printing Paper (4.07%), Ice Cream (3.46%), Salt and pure Sodium Chloride (3.22%), Other glass articles (3.21%), Unmanufactured Tobacco (2.93%), Jowar (2.84%) and Insecticides (2.59%).

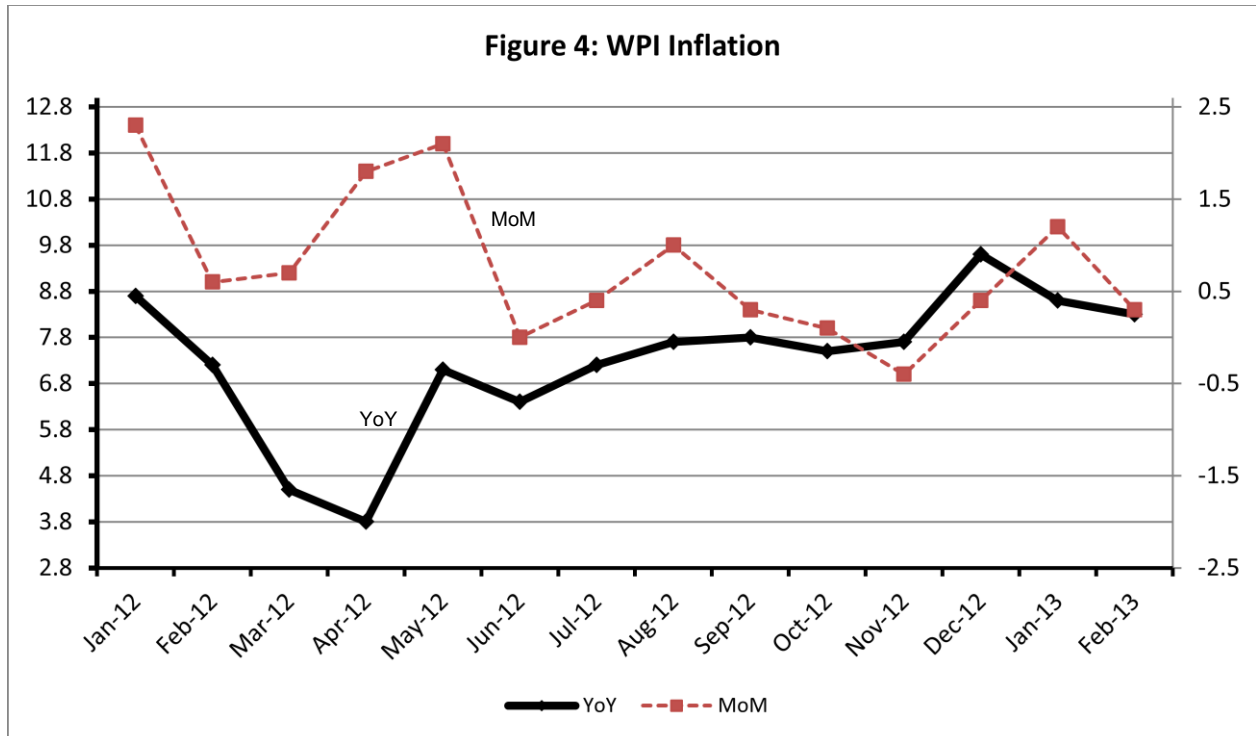
**Decreased:** Eggs (31.82%), Vegetables (12.16%), Edible roots/potatoes (7.09%), Oil Cakes (5.60%), Poultry (4.99%), other Oil Seeds (4.97%), Sugar Refined (3.19%), other cereal Flour (1.73%), Pulses (1.03%) and Hard Board (0.71%).

2. **Year-on-year** Top few commodities which varied from previous year i.e. February, 2012 are given below:-



**Increased:** Fresh Fruits (55.84%), Foot wears (37.46%), Electrical Energy (36.10%), other Cereal Flour (36.03%), Coal not Agglomerated (35.71%), Fish (31.33%), Paints & Varnishes (30.20%), Hard Board (25.23%), Tobacco Products (24.98%) and Bed sheets (23.26%).

**Decreased:** Furnace Oil (20.92%), Synthetic Carpets (20.59%), Eggs (20.08%), Vegetables (15.14%), Spices (9.64%), Cotton Seeds (9.09%), Poultry (8.80%), other Glass Articles (6.84%) Tractors (6.03%) and Sugar Crops (4.92%).



**Annexure A: Consumer Price Index Numbers by Commodity Groups & Commodities (2007-2008=100)**

Item and Specification	Weight	Index Numbers			% Change in Feb 2013 over			
		Feb 13	Jan 13	Feb 12	Jan 2013	Feb 2012		
<b>General</b>	<b>100.0000</b>	<b>175.11</b>	<b>175.70</b>	<b>163.07</b>	-	<b>0.34</b>	+	<b>7.38</b>
<b>Food &amp; Non-alcoholic Beverage</b>	<b>34.8343</b>	<b>193.70</b>	<b>196.52</b>	<b>181.19</b>	-	<b>1.43</b>	+	<b>6.90</b>
01 Wheat	0.3477	199.50	198.18	162.99	+	0.67	+	22.40
02 Wheat Flour	4.1648	200.33	200.55	167.16	-	0.11	+	19.84
03 Wheat Product	0.0959	189.40	186.20	162.71	+	1.72	+	16.40
04 Besan	0.1500	236.32	238.28	165.65	-	0.82	+	42.66
05 Rice	1.5821	181.58	179.71	152.35	+	1.04	+	19.19
06 Cereals	0.1563	210.83	209.94	191.31	+	0.42	+	10.20
07 Bakery & Confectionary	1.1550	180.03	178.14	165.09	+	1.06	+	9.05
08 Nimco	0.4574	200.35	198.97	183.59	+	0.69	+	9.13
09 Meat	2.4303	219.73	219.53	207.44	+	0.09	+	5.92
10 Chicken	1.3596	181.69	191.04	193.14	-	4.89	-	5.93
11 Fish	0.2970	202.68	201.51	189.93	+	0.58	+	6.71
12 Milk Fresh	6.6800	219.54	218.93	196.87	+	0.28	+	11.52
13 Milk Products	0.6338	211.29	211.17	195.08	+	0.06	+	8.31
14 Milk Powder	0.1129	185.81	185.48	163.67	+	0.18	+	13.53
15 Eggs	0.4555	180.37	251.22	203.93	-	28.20	-	11.55
16 Mustard Oil	0.0952	162.48	160.75	154.40	+	1.08	+	5.23
17 Cooking Oil	1.7538	161.71	162.30	145.95	-	0.36	+	10.80
18 Vegetable Ghee	2.0714	157.51	158.98	155.95	-	0.92	+	1.00
19 Dry Fruits	0.2543	212.97	211.55	196.90	+	0.67	+	8.16
20 Fresh Fruits	1.8649	174.69	179.14	178.60	-	2.48	-	2.19
21 Pulse Masoor	0.2712	146.58	145.66	151.21	+	0.63	-	3.06
22 Pulse Moong	0.2336	221.94	220.90	234.13	+	0.47	-	5.21
23 Pulse Mash (Washed)	0.2098	191.01	191.57	208.20	-	0.29	-	8.26
24 Pulse Gram	0.2361	231.09	233.36	161.41	-	0.97	+	43.17
25 Gram Whole	0.1616	222.44	225.54	203.24	-	1.37	+	9.45
26 Beans	0.0269	216.00	217.23	183.56	-	0.57	+	17.67
27 Potatoes	0.4776	143.63	156.92	122.81	-	8.47	+	16.95
28 Onion	0.5417	174.91	153.88	236.25	+	13.67	-	25.96
29 Tomatoes	0.4496	181.44	209.01	156.30	-	13.19	+	16.08
30 Fresh Vegetables	1.6571	156.35	179.49	175.70	-	12.89	-	11.01
31 Sugar	1.0445	188.87	192.83	180.01	-	2.05	+	4.92
32 Gur	0.0220	220.47	225.19	222.69	-	2.10	-	1.00
33 Honey	0.0446	256.16	254.80	215.89	+	0.53	+	18.65
34 SweetMeat	0.2483	207.84	207.27	197.44	+	0.28	+	5.27
35 Beverages	1.1990	169.72	169.71	158.81	+	0.01	+	6.87
36 Jam, Tomato Ketchup & Pickles	0.2454	180.84	181.23	170.44	-	0.22	+	6.10
37 Condiments	0.2656	214.80	214.25	208.37	+	0.26	+	3.09
38 Spices	0.5441	241.36	248.13	274.57	-	2.73	-	12.10
39 Tea	0.8377	223.16	220.38	204.05	+	1.26	+	9.37
<b>Alcoholic Beverages, Tobacco</b>	<b>1.4135</b>	<b>191.17</b>	<b>191.17</b>	<b>161.27</b>	+	<b>0.00</b>	+	<b>18.54</b>
40 Cigarettes	1.3906	191.31	191.31	161.10	+	0.00	+	18.75
41 Betel Leaves & Nuts	0.0229	182.57	182.64	171.73	-	0.04	+	6.31
<b>Clothing &amp; Footwear</b>	<b>7.5708</b>	<b>178.43</b>	<b>177.05</b>	<b>154.19</b>	+	<b>0.78</b>	+	<b>15.72</b>
42 Cotton Cloth	1.7286	163.61	162.20	146.36	+	0.87	+	11.79
43 Woolen Cloth	0.8759	200.18	197.86	175.90	+	1.17	+	13.80
44 Readymade Garments	0.9739	177.09	176.04	153.30	+	0.60	+	15.52
45 Woolen Readymade Garments	0.3964	193.46	192.09	162.48	+	0.71	+	19.07
46 Hosiery	0.5094	189.09	187.80	166.97	+	0.69	+	13.25
47 Dopatta	0.4412	196.66	195.26	163.94	+	0.72	+	19.96
48 Cleaning and Laundry	0.2110	198.61	196.18	168.02	+	1.24	+	18.21
49 Tailoring	0.8840	211.32	208.79	183.26	+	1.21	+	15.31
50 Footwear	1.5504	149.45	149.25	123.68	+	0.13	+	20.84

+

+

**Annexure A: Consumer Price Index Numbers by Commodity Groups & Commodities (2007-2008=100)**

Item and Specification	Weight	Index Numbers			% Change in Feb 2013 over			
		Feb 13	Jan 13	Feb 12	Jan 2013	Feb 2012		
<b>Housing, Water, Elec., Gas, Other</b>	<b>29.4149</b>	<b>152.79</b>	<b>152.73</b>	<b>147.59</b>	<b>+</b>	<b>0.04</b>	<b>+</b>	<b>3.52</b>
51 House Rent	21.8149	142.46	142.46	133.31	+	0.00	+	6.86
52 Construction Input Items	0.5623	204.56	203.39	188.18	+	0.58	+	8.70
53 Construction Wage Rates	0.3331	175.62	174.67	157.11	+	0.54	+	11.78
54 Water Supply	0.4971	134.90	134.90	131.65	+	0.00	+	2.47
55 Electricity	4.3985	196.37	196.37	168.71	+	0.00	+	16.39
56 Gas	1.5756	142.58	142.58	264.42	+	0.00	-	46.08
57 Kerosene Oil	0.0057	276.25	274.86	248.56	+	0.51	+	11.14
58 Firewood Whole	0.2277	246.28	242.39	216.88	+	1.60	+	13.56
<b>Furnished H. Hold Equip. &amp; Hous</b>	<b>4.2082</b>	<b>181.91</b>	<b>180.97</b>	<b>165.48</b>	<b>+</b>	<b>0.52</b>	<b>+</b>	<b>9.93</b>
59 Furniture	0.3315	171.54	170.15	156.10	+	0.82	+	9.89
60 Household Textiles	0.6489	177.68	177.05	160.99	+	0.36	+	10.37
61 Household Equipment	0.5936	158.68	158.42	150.55	+	0.16	+	5.40
62 Utensils	0.3212	179.02	178.48	155.00	+	0.30	+	15.50
63 Plastic Products	0.2547	177.32	175.86	167.35	+	0.83	+	5.96
64 Washing Soaps & Detergents	0.7893	197.96	195.92	180.92	+	1.04	+	9.42
65 Sewing Needle & Dr Cell	0.1496	152.30	152.13	140.52	+	0.11	+	8.38
66 Household Servant	1.0432	194.31	193.59	173.92	+	0.37	+	11.72
67 Marriage Hall Charges	0.0762	193.63	193.63	172.29	+	0.00	+	12.39
<b>Health</b>	<b>2.1868</b>	<b>158.02</b>	<b>157.50</b>	<b>139.60</b>	<b>+</b>	<b>0.33</b>	<b>+</b>	<b>13.19</b>
68 Drugs & Medicines	1.2667	139.74	139.04	125.34	+	0.50	+	11.49
69 Medical Equipments	0.0080	201.48	200.84	176.81	+	0.32	+	13.95
70 Doctor (MBBS) Clinic Fee	0.5904	196.28	196.28	167.72	+	0.00	+	17.03
71 Medical Tests	0.3217	158.67	157.96	143.21	+	0.45	+	10.80
<b>Transport</b>	<b>7.2023</b>	<b>188.35</b>	<b>186.75</b>	<b>174.98</b>	<b>+</b>	<b>0.86</b>	<b>+</b>	<b>7.64</b>
72 Motor Vehicles	0.6630	154.73	153.42	143.40	+	0.85	+	7.90
73 Motor Vehicle Accessories	0.2439	212.30	211.06	196.06	+	0.59	+	8.28
74 Motor Fuel	3.0269	183.71	184.37	177.24	-	0.36	+	3.65
75 Mechanical Service	0.4552	185.37	185.06	168.64	+	0.17	+	9.92
76 Motor Vehicle Tax	0.1099	153.74	152.02	126.33	+	1.13	+	21.70
77 Transport Services	2.7034	201.53	197.09	181.34	+	2.25	+	11.13
<b>Communication</b>	<b>3.2198</b>	<b>128.63</b>	<b>128.62</b>	<b>122.34</b>	<b>+</b>	<b>0.01</b>	<b>+</b>	<b>5.14</b>
78 Postal Services	0.0662	174.59	174.47	166.89	+	0.07	+	4.61
79 Communication & Apparatus	3.1536	127.66	127.65	121.41	+	0.01	+	5.15
<b>Recreation &amp; Culture</b>	<b>2.0227</b>	<b>167.30</b>	<b>166.96</b>	<b>143.03</b>	<b>+</b>	<b>0.20</b>	<b>+</b>	<b>16.97</b>
80 Recreation & Culture	0.8634	122.45	122.30	118.69	+	0.12	+	3.17
81 Text Books	0.5706	231.05	231.06	164.41	+	0.00	+	40.53
82 Newspapers	0.1934	157.59	157.59	149.97	+	0.00	+	5.08
83 Stationery	0.3953	178.01	176.55	161.93	+	0.83	+	9.93
<b>Education</b>	<b>3.9431</b>	<b>155.83</b>	<b>155.07</b>	<b>143.82</b>	<b>+</b>	<b>0.49</b>	<b>+</b>	<b>8.35</b>
84 Education	3.9431	155.83	155.07	143.82	+	0.49	+	8.35
<b>Restaurants &amp; Hotels</b>	<b>1.2286</b>	<b>207.28</b>	<b>204.48</b>	<b>188.82</b>	<b>+</b>	<b>1.37</b>	<b>+</b>	<b>9.78</b>
85 Readymade Food	1.2286	207.28	204.48	188.82	+	1.37	+	9.78
<b>Miscellaneous Goods &amp; Service</b>	<b>2.7550</b>	<b>202.74</b>	<b>201.76</b>	<b>186.70</b>	<b>+</b>	<b>0.49</b>	<b>+</b>	<b>8.59</b>
86 Personal Care	1.4935	181.67	180.95	167.01	+	0.40	+	8.78
87 Cosmetics	0.3853	149.40	149.85	144.81	-	0.30	+	3.17
88 Blades	0.0322	174.21	174.21	164.07	+	0.00	+	6.18
89 Personal Equipments	0.8440	265.47	263.31	241.52	+	0.82	+	9.92

## Annexure B: Wholesale Price Indices by Major Groups &amp; Commodities

(2007-2008=100)

Item and Specification	Weight	Index Numbers			% Change in Feb 2013 over			
		Feb 13	Jan 13	Feb 12	Jan 2013	Feb 2012		
<b>General</b>	<b>100.0000</b>	<b>196.06</b>	<b>195.39</b>	<b>180.99</b>	<b>+</b>	<b>0.34</b>	<b>+</b>	<b>8.33</b>
<b>Agriculture Forestry &amp; Fisher</b>	<b>25.7674</b>	<b>198.37</b>	<b>196.33</b>	<b>179.07</b>	<b>+</b>	<b>1.04</b>	<b>+</b>	<b>10.78</b>
001 Wheat	0.6297	207.60	205.59	168.45	+	0.98	+	23.24
002 Maize	0.6764	178.29	169.08	151.80	+	5.45	+	17.45
003 Rice	2.4413	165.57	163.12	148.66	+	1.50	+	11.37
004 Sorghum/Jowar	0.0214	209.43	203.64	188.29	+	2.84	+	11.23
005 Millet/Bajra	0.0374	170.25	170.64	140.69	-	0.23	+	21.01
006 Vegetables	1.2441	165.61	188.53	195.16	-	12.16	-	15.14
007 Fresh Fruits	1.5144	210.65	210.03	135.17	+	0.30	+	55.84
008 Dry Fruits	0.2478	185.34	182.41	185.62	+	1.61	-	0.15
009 Cotton Seeds	1.1511	166.82	165.83	183.50	+	0.60	-	9.09
010 Other Oil Seeds	0.0722	178.37	187.70	167.50	-	4.97	+	6.49
011 Edible Roots/Potatoes	0.2540	138.83	149.42	122.15	-	7.09	+	13.66
012 Stimulant and Spice Crops	0.1634	188.76	177.23	182.85	+	6.51	+	3.23
013 Pulses	0.4901	204.49	206.62	205.66	-	1.03	-	0.57
014 Sugar Crops	1.0725	267.92	267.92	281.77	+	0.00	-	4.92
015 Fibre Crops	5.3169	199.23	179.31	180.96	+	11.11	+	10.10
016 Unmanufactured Tobacco	0.0742	174.04	169.08	167.94	+	2.93	+	3.63
017 Poultry	0.5633	188.11	197.99	206.27	-	4.99	-	8.80
018 Raw Milk from Bovine Animals	7.0279	220.40	219.99	189.49	+	0.19	+	16.31
019 Eggs	0.5034	168.53	247.18	210.88	-	31.82	-	20.08
020 Raw Animal Materials/Wool	0.0351	137.58	137.58	136.29	+	0.00	+	0.95
021 Hides and Fur Skins, Raw	0.4834	139.48	139.23	136.91	+	0.18	+	1.88
022 Fuel Wood in Logs	0.0179	219.44	218.79	196.83	+	0.30	+	11.49
023 Fish Live Fresh or Chilled	1.7295	189.26	187.55	144.11	+	0.91	+	31.33
<b>Ores/Minerals, Elec., Gas &amp; W</b>	<b>12.0389</b>	<b>215.52</b>	<b>216.13</b>	<b>187.55</b>	<b>-</b>	<b>0.28</b>	<b>+</b>	<b>14.91</b>
024 Coal not Agglomerated	0.7508	223.53	223.53	164.71	+	0.00	+	35.71
025 Natural Gas Liquified	5.7385	204.82	206.15	211.32	-	0.65	-	3.08
026 Salt and Pure Sodium Chloride	0.0584	170.30	164.98	160.27	+	3.22	+	6.26
027 Electrical Energy	5.4912	226.10	226.10	166.13	+	0.00	+	36.10
<b>Food, Beverages, Tobacco, Textil</b>	<b>31.1122</b>	<b>190.68</b>	<b>190.57</b>	<b>173.34</b>	<b>+</b>	<b>0.06</b>	<b>+</b>	<b>10.00</b>
<b>Food Products, Beverages &amp;</b>	<b>20.0718</b>	<b>193.05</b>	<b>193.40</b>	<b>175.84</b>	<b>-</b>	<b>0.18</b>	<b>+</b>	<b>9.79</b>
028 Meat of Animals	3.4559	229.40	229.17	220.62	+	0.10	+	3.98
029 Vegetables and Fruit Juice	0.0058	189.33	189.09	176.09	+	0.13	+	7.52
030 Dried Fruits and Nuts	0.1733	224.68	223.34	202.14	+	0.60	+	11.15
031 Fruit Juices	0.3880	158.79	157.91	155.83	+	0.56	+	1.90
032 Vegetable Oils Refined	1.9242	160.11	157.28	150.92	+	1.80	+	6.09
033 Vegetable Ghee	1.5632	141.86	140.11	139.02	+	1.25	+	2.04
034 Oil Cakes	0.9611	163.45	173.15	142.66	-	5.60	+	14.57
035 Processed Liquid Milk	4.4437	208.43	208.43	183.24	+	0.00	+	13.75
036 Milk and Cream in Solid Form	0.0316	171.59	171.59	166.10	+	0.00	+	3.31
037 Ice Cream	0.0047	173.49	167.68	153.30	+	3.46	+	13.17
038 Dairy Products N.E.C	0.0117	206.31	204.91	188.97	+	0.68	+	9.18
039 Wheat Flour	2.3034	186.10	184.41	153.12	+	0.92	+	21.54
040 Other Cereal Flour	0.0604	198.50	202.00	145.92	-	1.73	+	36.03
041 Sugar Refined	1.7975	194.64	201.05	184.35	-	3.19	+	5.58
042 Chocolate	0.0139	99.19	99.19	100.26	+	0.00	-	1.07
043 Sugar Confectionary	0.0738	102.28	102.28	100.40	+	0.00	+	1.87
044 Coffee and Tea	0.7303	201.59	200.60	193.29	+	0.49	+	4.29
045 Spices	0.1449	273.41	273.27	302.57	+	0.05	-	9.64
046 Other Food Products	0.0336	318.46	319.52	320.96	-	0.33	-	0.78
047 Mineral Water	0.0207	168.32	168.32	165.65	+	0.00	+	1.61
048 Beverages	0.6303	137.86	137.86	135.24	+	0.00	+	1.94
049 Tobacco Products	1.2998	208.80	208.80	167.07	+	0.00	+	24.98
<b>Textiles &amp; Apparels</b>	<b>10.3289</b>	<b>190.87</b>	<b>189.88</b>	<b>172.71</b>	<b>+</b>	<b>0.52</b>	<b>+</b>	<b>10.51</b>
050 Cotton Yarn	5.2491	216.35	214.74	193.21	+	0.75	+	11.98
051 Nylon Yarn	0.1719	183.22	180.86	179.97	+	1.30	+	1.81
052 Blended Yarn	0.1689	199.23	194.85	184.35	+	2.25	+	8.07
053 Woven Fabrics	0.0128	206.00	206.00	171.28	+	0.00	+	20.27
054 Cotton Fabrics	0.6343	174.17	174.17	167.56	+	0.00	+	3.94
055 Other Fabrics	1.1016	165.62	165.62	157.01	+	0.00	+	5.48
056 Silk and Reyon Fabrics	0.7350	154.21	154.21	138.97	+	0.00	+	10.97

## Annexure B: Wholesale Price Indices by Major Groups &amp; Commodities

(2007-2008=100)

Item and Specification	Weight	Index Numbers			% Change in Feb 2013 over	
		Feb 13	Jan 13	Feb 12	Jan 2013	Feb 2012
057 Towels	0.1235	203.06	203.06	183.73	+ 0.00	+ 10.52
058 Blankets	0.0029	185.21	185.21	154.55	+ 0.00	+ 19.84
059 Bed Sheets	0.0913	207.04	204.38	167.97	+ 1.30	+ 23.26
060 Quilts	0.0019	153.32	152.84	147.05	+ 0.31	+ 4.26
061 Woolen Carpets	0.0383	106.55	106.55	103.57	+ 0.00	+ 2.88
062 Synthetic Carpets	0.0566	114.41	114.41	144.07	+ 0.00	- 20.59
063 Hosiery Products	0.8832	181.47	181.12	157.24	+ 0.19	+ 15.41
064 Readymade Garments	1.0576	138.19	138.14	126.99	+ 0.04	+ 8.82
<b>Leather Products</b>	<b>0.7115</b>	<b>120.99</b>	<b>120.99</b>	<b>112.03</b>	<b>+ 0.00</b>	<b>+ 8.00</b>
065 Leather without Hair	0.2973	109.83	109.83	110.01	+ 0.00	- 0.16
066 Other Leather N.E.C	0.2567	122.57	122.57	120.85	+ 0.00	+ 1.42
067 Footwears	0.1575	139.49	139.49	101.48	+ 0.00	+ 37.46
<b>Other Transportable Goods</b>	<b>22.3659</b>	<b>204.80</b>	<b>204.00</b>	<b>200.50</b>	<b>+ 0.39</b>	<b>+ 2.14</b>
068 Timber	0.0165	148.59	148.36	142.03	+ 0.16	+ 4.62
069 Printing Paper	0.4279	161.68	155.35	132.81	+ 4.07	+ 21.74
070 Hard Board	0.1579	193.06	194.44	154.17	- 0.71	+ 25.23
071 Coke	0.2797	163.45	163.45	163.45	+ 0.00	+ 0.00
072 Motor Spirit	1.5336	172.73	172.73	160.33	+ 0.00	+ 7.73
073 Diesel Oil	5.2664	261.36	261.36	248.36	+ 0.00	+ 5.23
074 Kerosine Oil	0.2151	264.94	264.94	245.34	+ 0.00	+ 7.99
075 Furnace Oil	3.2664	168.81	168.81	213.47	+ 0.00	- 20.92
076 Mobil Oil	0.7114	184.85	184.85	172.39	+ 0.00	+ 7.23
077 Chemicals	1.7720	157.85	156.16	146.61	+ 1.08	+ 7.67
078 Dyeing Material	0.1539	106.24	104.26	104.26	+ 1.90	+ 1.90
079 Fertilizers	2.8657	263.38	259.68	269.00	+ 1.42	- 2.09
080 Pesticides	0.2763	197.49	197.49	165.30	+ 0.00	+ 19.47
081 Insecticides	0.1276	120.46	117.42	123.86	+ 2.59	- 2.75
082 Paints and Varnishes	0.1916	238.30	238.30	183.02	+ 0.00	+ 30.20
083 Medicines	1.1428	139.32	139.54	114.17	- 0.16	+ 22.03
084 Soaps and Detergents	0.8168	168.27	168.41	154.04	- 0.08	+ 9.24
085 Auto Tyres	0.2703	180.99	180.99	173.78	+ 0.00	+ 4.15
086 Plastic Products	0.4550	192.40	192.40	181.84	+ 0.00	+ 5.81
087 Glass sheets	0.2089	192.74	190.93	170.66	+ 0.95	+ 12.94
088 Other Glass Articles	0.1635	197.87	191.72	212.39	+ 3.21	- 6.84
089 Ceramics and Sanitary Fixture	0.0244	160.55	157.45	139.98	+ 1.97	+ 14.69
090 Bricks, Blocks and Tiles	0.1566	177.53	177.53	171.23	+ 0.00	+ 3.68
091 Cement	1.8145	187.79	187.78	161.26	+ 0.01	+ 16.45
092 Bed Foam	0.0006	142.83	142.83	128.83	+ 0.00	+ 10.87
093 Matches	0.0505	133.50	133.50	120.39	+ 0.00	+ 10.89
<b>Metal Product, Machinery &amp; Eq</b>	<b>8.7156</b>	<b>159.08</b>	<b>159.07</b>	<b>154.87</b>	<b>+ 0.01</b>	<b>+ 2.72</b>
094 Pig Iron	0.0593	128.97	128.97	128.97	+ 0.00	+ 0.00
095 Steel Bar and Sheets	1.4022	132.81	132.75	132.90	+ 0.05	- 0.07
096 Pipe Fittings	0.0780	141.47	141.47	141.36	+ 0.00	+ 0.08
097 Steel Products	0.3879	161.94	161.94	158.18	+ 0.00	+ 2.38
098 Engines and Motors	0.0046	109.07	109.07	109.07	+ 0.00	+ 0.00
099 Vacuum Pumps	0.0155	115.39	115.39	115.39	+ 0.00	+ 0.00
100 Air Conditioners	0.0049	172.67	172.67	164.27	+ 0.00	+ 5.11
101 Cultivators	0.0551	189.23	189.23	184.66	+ 0.00	+ 2.47
102 Chuff Cutter	0.1293	138.54	138.54	131.08	+ 0.00	+ 5.69
103 Tractors	0.0028	161.96	161.96	172.36	+ 0.00	- 6.03
104 Lathe Machines	0.0525	147.68	147.68	147.68	+ 0.00	+ 0.00
105 Concrete Mixture	0.0107	138.83	138.83	138.83	+ 0.00	+ 0.00
106 Fridge, WashM, SewM, Fans, Iron	1.1645	166.47	166.45	163.50	+ 0.01	+ 1.82
107 Electric Wires	0.0912	159.57	159.57	163.34	+ 0.00	- 2.31
108 Lighting Equipments	1.4431	148.26	148.26	143.66	+ 0.00	+ 3.20
109 Radio and Television	0.1843	126.46	126.46	131.06	+ 0.00	- 3.51
110 Motor Vehicles	0.0244	173.75	173.75	157.68	+ 0.00	+ 10.19
111 Motorcycles	0.2570	125.07	125.19	123.29	- 0.10	+ 1.44
112 Bicycles	3.3483	177.87	177.87	170.59	+ 0.00	+ 4.27