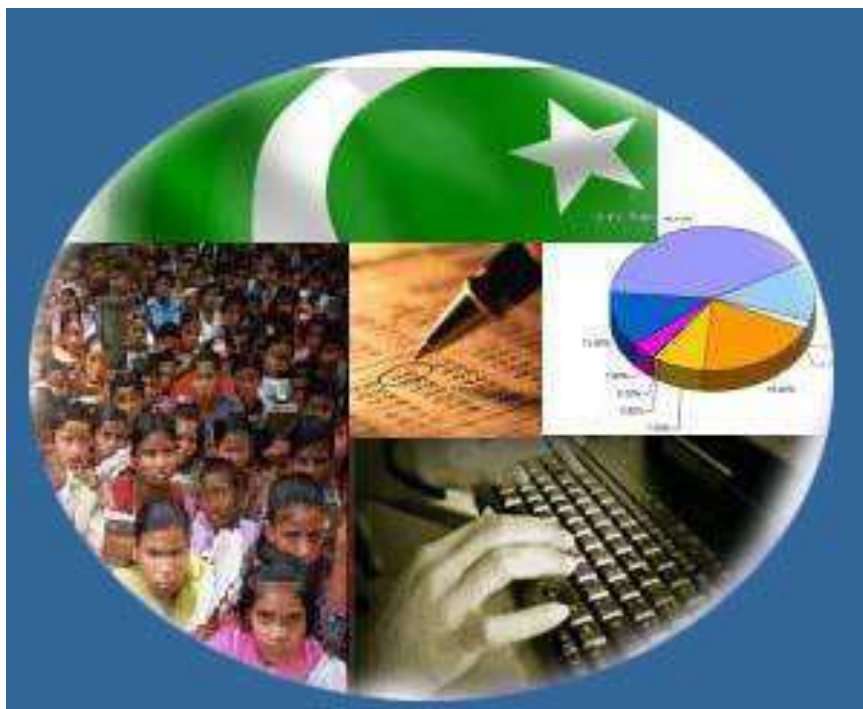




# Monthly Review on Price Indices



**September, 2013**  
(Base 2007-08)

**Government of Pakistan  
Statistics Division  
Pakistan Bureau of Statistics  
Islamabad**



## I. Inflation in Brief

1. CPI inflation, General, increased by 7.4% on year-on-year basis in September 2013 as compared to 8.5% in the previous month and 8.8% in September 2012. On month-on-month basis, it decreased by 0.3% in September 2013 as compared to an increase of 1.2% in the previous month and 0.8% in September 2012.
2. Core inflation measured by non-food non-energy CPI (Core NFNE) increased by 8.7% in September 2013 as compared to 8.5% in August 2013 (YoY) and by 10.4% in September 2012. Core NFNE inflation on MoM basis increased by 0.6% in September 2013 as compared to 0.6% a month earlier and 0.4% in September 2012.
3. Core inflation, measured by 20% weighted trimmed mean CPI (Core Trimmed) increased by 7.6% in September 2013 and by 7.9% in August 2013 (YoY) which increased by 10.4% in September 2012. Core Trimmed inflation has increased by 0.6% on MoM basis in September 2013 as compared to 0.6% in August 2013 which increased by 0.5% in September 2012.
4. SPI inflation on YoY basis increased by 8.8% in September 2013 as compared with 10.1% a month earlier and 8.0% in September 2012. On MoM basis, it increased by 0.1% in September 2013 as compared to an increase of 1.5% a month earlier and 1.2% in September 2012.
5. WPI inflation on YoY basis increased to 8.7% in September 2013 compared with 8.3% a month earlier and 7.8% in September 2012. WPI inflation on MoM basis increased by 0.7% in September 2013 as compared to an increase of 2.6% a month earlier and 0.3% in September 2012.
6. Figures 1 and 2 show graphically the data of Table 1. Table 1.1 shows "Period Average" and "YoY" percent changes in indices of three years.

**Table 1: Inflation (%) (Base 2007-08)**

Period	CPI						Core Inflation				SPI**		WPI	
	General		Food		Non-food		NFNE*		Trimmed		YoY	MoM	YoY	MoM
	YoY	MoM	YoY	MoM	YoY	MoM	YoY	MoM	YoY	MoM				
Aug 12	9.1	0.9	8.5	0.9	9.4	0.9	10.8	0.3	10.6	0.4	8.2	1.3	7.7	1.0
Sep 12	8.8	0.8	7.6	0.7	9.7	0.9	10.4	0.4	10.4	0.5	8.0	1.2	7.8	0.3
Oct 12	7.7	0.4	5.8	-0.1	9.1	0.7	10.1	1.2	9.7	0.7	6.7	-0.4	7.5	0.1
Nov 12	6.9	-0.4	5.3	-0.3	8.1	-0.4	9.7	0.2	8.8	0.2	6.0	0.0	7.7	-0.4
Dec 12	7.9	0.2	7.7	0.0	8.1	0.4	9.8	0.5	9.2	0.3	8.2	0.0	9.6	0.4
Jan 13	8.1	1.7	8.1	1.9	8.1	1.5	9.9	1.2	9.9	1.0	9.2	1.9	8.6	1.2
Feb 13	7.4	-0.3	7.4	-1.3	7.4	0.3	9.6	0.4	9.2	0.2	9.4	0.1	8.3	0.3
Mar 13	6.6	0.4	6.3	0.5	6.7	0.3	9.0	0.4	8.4	0.2	8.7	0.8	7.9	0.3
Apr 13	5.8	1.1	5.5	1.4	6.0	0.9	8.7	1.1	7.6	0.7	6.6	-0.3	6.8	0.8
May 13	5.1	0.5	6.5	1.1	4.1	0.1	8.1	0.3	6.7	0.3	6.8	0.1	4.1	-0.4
Jun 13	5.9	0.7	7.9	1.1	4.4	0.5	7.8	0.4	6.8	0.6	7.9	2.5	5.2	1.0
Jul 13	8.3	2.0	9.2	3.0	7.6	1.3	8.2	1.5	7.8	1.2	9.8	2.3	6.5	1.6
Aug 13	8.5	1.2	10.3	2.0	7.3	0.6	8.5	0.6	7.9	0.6	10.1	1.5	8.3	2.6
Sep 13	7.4	-0.3	7.9	-1.5	7.0	0.6	8.7	0.6	7.6	0.6	8.8	0.1	8.7	0.7

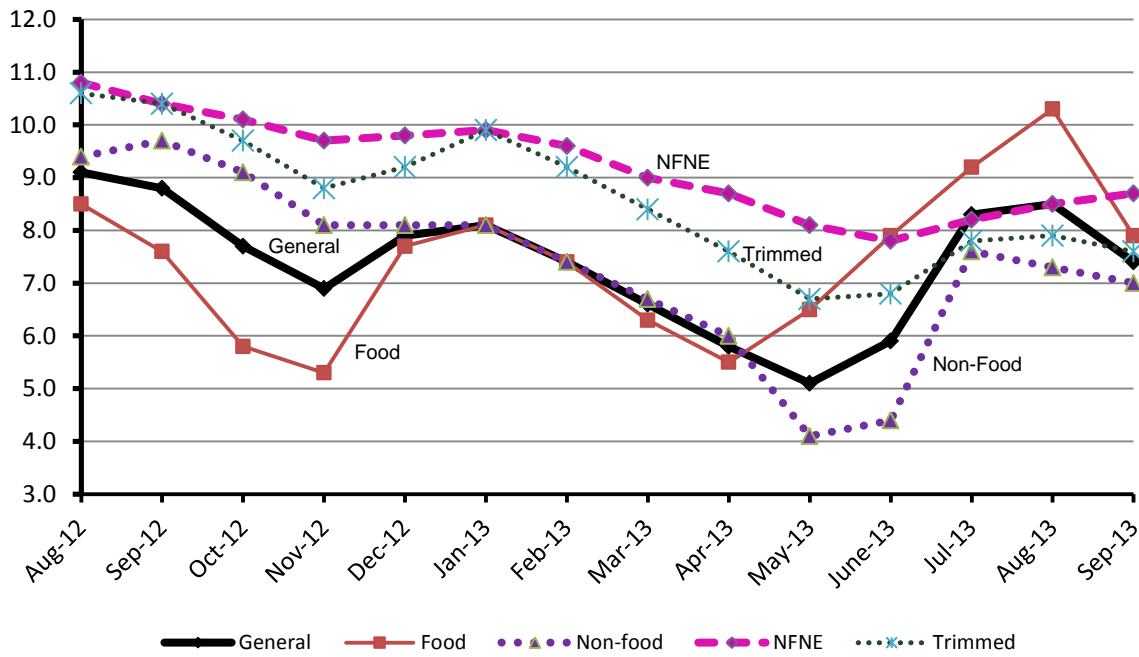
\*NFNE is non-food non-energy,

\*\* SPI for quintile 1

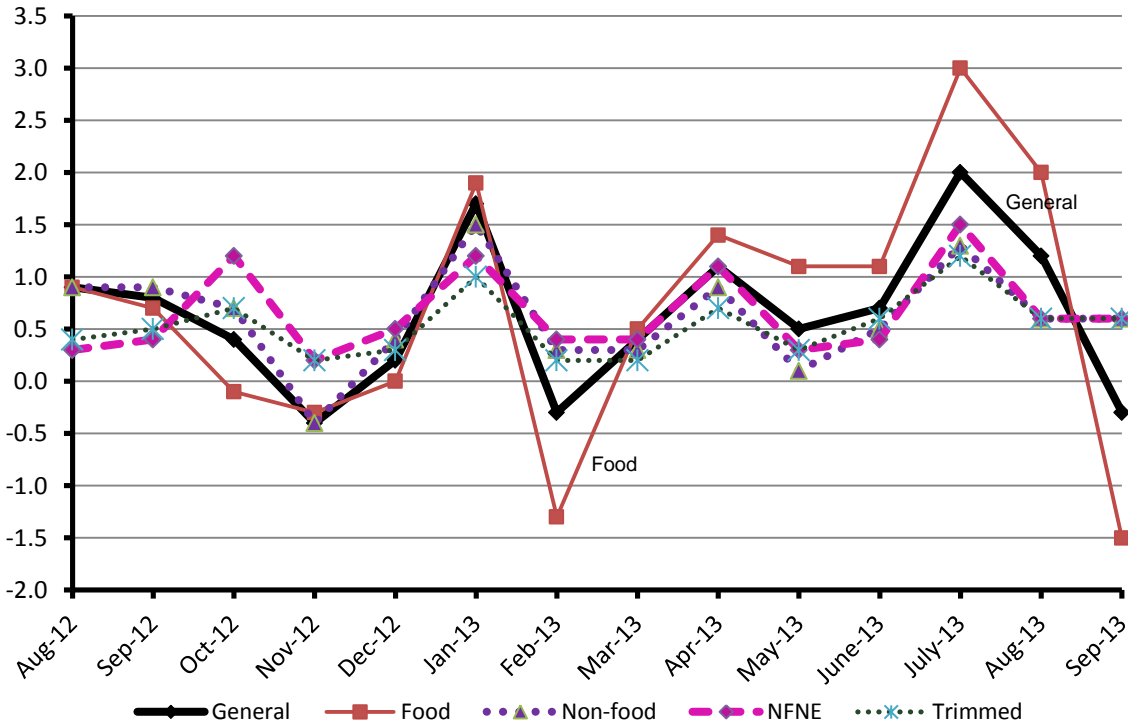
**Table 1.1 : Period Average and YoY % Changes of Indices (Base 2007-08)**

Index	Averages July-September % Changes			September over September % Changes		
	2013-14	2012-13	2011-12	2013-14	2012-13	2011-12
CPI	8.06	9.14	11.47	7.39	8.79	10.46
SPI	9.55	7.95	10.68	8.81	8.02	7.56
WPI	7.82	7.59	18.63	8.65	7.82	16.98

**Figure 1: CPI Inflation YoY, Special Indices**



**Figure 2: CPI Inflation MoM, Special Indices**



## II. Consumer Price Index (CPI)

The Consumer Price Index of September, 2013 has decreased by 0.29% over August 2013 and increased by 7.39% over corresponding month of last year.

**Table 2 : Consumer Price Index by Group of Commodities and Services (Base 2007-08)**

No	Group	Group Weight (%)	Indices			% Change Sep 2013 over		Impact (In % points) Sep 2013 Over	
			Sep 2013	Aug 2013	Sep 2012	Aug 2013	Sep 2012	Aug 2013	Sep 2012
	General	<b>100.00</b>	<b>185.18</b>	<b>185.71</b>	<b>172.44</b>	<b>-0.29</b>	<b>7.39</b>	<b>-0.29</b>	<b>7.39</b>
1.	Food & Non-alcoholic Bev.	34.83	208.29	211.91	193.80	-1.71	7.48	-0.68	2.93
	<i>Non-perishable Food Items</i>	<i>29.84</i>	<i>206.08</i>	<i>206.90</i>	<i>191.46</i>	<i>-0.40</i>	<i>7.64</i>	<i>-0.13</i>	<i>2.53</i>
	<i>Perishable Food Items</i>	<i>4.99</i>	<i>221.51</i>	<i>241.86</i>	<i>207.77</i>	<i>-8.41</i>	<i>6.61</i>	<i>-0.55</i>	<i>0.40</i>
2.	Alcoholic Bev. & Tobacco	1.41	217.85	217.51	190.34	0.16	14.45	0.00	0.23
3.	Clothing & Footwear	7.57	193.59	192.38	168.51	0.63	14.88	0.05	1.10
4.	Housing, Water, Electricity, Gas & Fuels	29.41	157.75	157.59	147.99	0.10	6.60	0.03	1.66
5.	Furnishing & Household Equipment Maintenance	4.21	190.99	188.99	175.40	1.06	8.89	0.05	0.38
6.	Health	2.19	164.23	162.32	153.94	1.18	6.68	0.02	0.13
7.	Transport	7.20	194.54	190.63	194.25	2.05	0.15	0.15	0.01
8.	Communication	3.22	129.66	129.65	123.56	0.01	4.94	0.00	0.11
9.	Recreation & Culture	2.02	181.87	181.28	165.24	0.33	10.06	0.01	0.20
10.	Education	3.94	166.49	166.03	153.87	0.28	8.20	0.01	0.29
11.	Restaurants & Hotels	1.23	221.68	216.32	197.85	2.48	12.04	0.04	0.17
12.	Miscellaneous	2.76	206.86	204.07	195.65	1.37	5.73	0.04	0.18

Main contributors to month-on-month and year-on-year percentage changes are given below and detail is given in Annexure A.

1. **Month-on-month** Top few commodities which varied from previous month i.e. August 2013 are given below:-

**Food Items Increased:** Eggs (13.20%), Fresh Vegetables (4.79%), Potatoes (4.53%), Bakery & Confectionary (2.98%), Wheat (2.93%), Wheat Flour (2.80%), Readymade Food (2.48%), Wheat Products (2.37%), Milk Powder (2.03%) and Gur (1.69%).

**Decreased:** Chicken (24.50%), Tomatoes (23.60%), Onions (15.63%), Fresh Fruits (15.48%), Pulse Gram (3.20%), Gram Whole (2.29%), Pulse Moong (1.22%), Besan (1.19%), Beverages (0.80%), Spices (0.72%), Sugar (0.33%) and Vegetable Ghee (0.12%).

**Non-food Items Increased:** Water Supply (3.02%), Motor Fuel (2.93%), Kerosene Oil (2.92%), Doctor (MBBS) Clinic Fee (2.52%), Personal Equipments (2.42%), Firewood Whole (1.90%), Transport Services (1.71%).

2. **Year-on-year:** Top few commodities which varied from previous year i.e. September 2012 are given below:-

**Food Items Increased:** Tomatoes (29.36%), Onions (26.13%), Tea (25.97%), Wheat (24.31%), Wheat Flour (23.56%), Gur (23.16%), Wheat Products (17.68%), Potatoes (14.95%), Cigarettes (14.58%), Cereals (12.79%), Chicken (12.56%), Beans (12.42%) and Rice (12.30%).

**Decreased:** Pulse Gram (31.06%), Besan (26.91%), Gram Whole (22.62%), Spices (19.19%), Fresh Fruits (7.08%), Vegetable Ghee (5.03%), Pulse Mash (3.44%), Cooking Oil (2.22%) and Mustard Oil (1.71%).

**Non-food Items Increased:** Postal Services (25.93%), Footwear (18.56%), Woolen Readymade Garments (18.05%), Text Books (15.92%), Cotton Cloth (15.72%), Tailoring (15.46%), Dopatta (14.28%), Cosmetics (14.16%) and Cleaning & Laundry (13.76%).

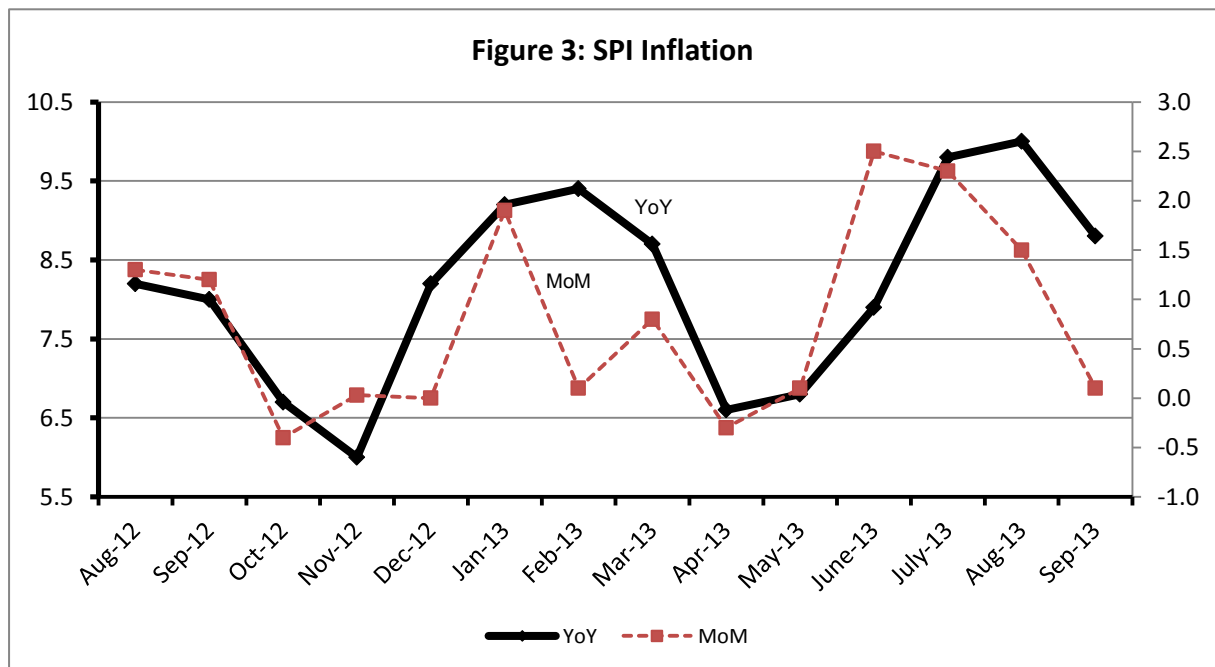
**Decreased:** Motor Fuel (5.43%).

### III. Sensitive Price Indicator

Quintile-wise percentage changes YoY and MoM are given below in Table 3. The series from August 2012 to September 2013 is also graphed below in Figure 3.

**Table 3 : Sensitive Price Indicator (Base 2007-08)**

Quintiles	Indices			% Change Sep 2013 over	
	Sep 2013	Aug 2013	Sep 2012	Aug 2013	Sep 2012
1	198.61	198.48	182.53	0.07	8.81
2	204.40	204.55	188.75	-0.07	8.29
3	202.80	203.12	187.58	-0.16	8.11
4	203.93	204.34	188.89	-0.20	7.96
5	203.65	203.86	189.52	-0.10	7.46
Combined	203.05	203.29	188.21	-0.12	7.88



#### IV. Wholesale Price Index

The Wholesale Price Index for September 2013 increased by 0.71% over August 2013. It increased by 8.65% over the corresponding month of the last year. YoY and MoM movements, from August 2012 to September 2013 are also graphed below in Figure 4.

Table 4 : Wholesale Price Index by Group of Commodities (Base 2007-08)									
No.	Group	Group Weight (%)	Indices			% Change Sep 2013 over		Impact (in %age points) Sep 2013 over	
			Sep 2013	Aug 2013	Sep 2012	Aug 2013	Sep 2012	Aug 2013	Sep 2012
	<b>General</b>	<b>100.00</b>	<b>209.33</b>	<b>207.85</b>	<b>192.66</b>	<b>0.71</b>	<b>8.65</b>	<b>0.71</b>	<b>8.65</b>
1.	Agriculture, Forestry & Fishery Products	25.77	218.32	218.23	194.63	0.04	12.17	0.01	3.17
2.	Ores & Minerals, Electricity, Gas & Water	12.04	240.04	239.51	207.86	0.22	15.48	0.03	2.01
3.	Food Products, Beverages & Tobacco, Textiles, Apparel & Leather Products	31.11	199.08	197.43	184.53	0.84	7.88	0.25	2.35
	i. Food Products, Bev. & Tobacco	20.07	199.98	199.00	189.86	0.49	5.33	0.09	1.05
	ii. Textiles and Apparel	10.33	198.31	195.98	178.72	1.19	10.96	0.12	1.05
	iii. Leather Products	0.71	184.76	173.96	118.56	6.21	55.84	0.04	0.24
4.	Other Transportable Goods except Metal Products, Machinery & Equipments	22.37	213.44	209.59	207.14	1.84	3.04	0.41	0.73
5.	Metal Products, Machinery & Equipments	8.72	166.39	166.14	157.74	0.15	5.48	0.01	0.39

Main contributors to month-on-month and year-on-year percentage changes are given below and detail is given in Annexure B.

1. **Month-on-month** Top few commodities which varied from previous month i.e. August 2013 are given below:-

**Increased:** Eggs (14.08%), Other Leather N.E.C (10.46%), Edible Roots/ Potatoes (6.13%), Vegetables (5.85%), Stimulants & Spice Crops (5.53%), Salt and Pure Sodium Chloride (5.46%), Kerosene Oil (4.65%), Motor Spirit (4.44%), Insecticides (4.42%) and Hard Board (4.17%).

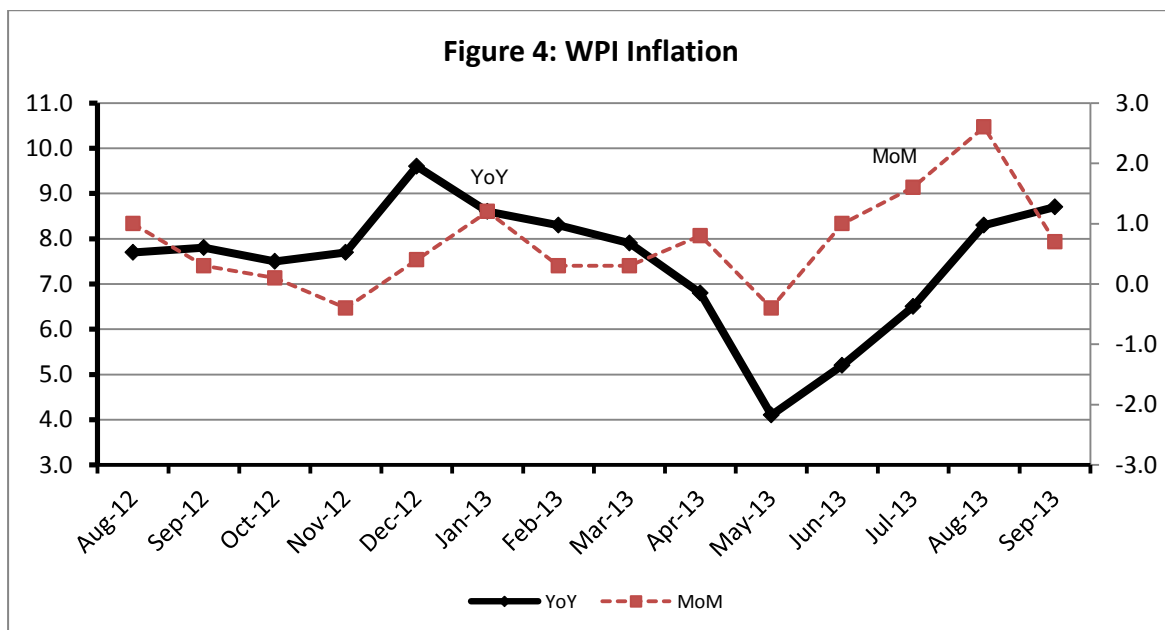
**Decreased:** Poultry (25.24%), Fresh Fruits (10.33%), Other Cereal Flour (4.29%), Nylon Yarn (2.90%), Dyeing Material (2.77%), Pulses (2.48%), Dry Fruits (1.88%), Bajra (1.52%), Maize (0.71%) and Fish (0.51%).



2. **Year-on-year** Top few commodities which varied from previous year i.e. September, 2012 are given below:-

**Increased:** Other Leather N.E.C (115.22%), Stimulant and Spice Crops (52.60%), Fish (41.77%), Jowar (35.19%), Salt and pure sodium chloride (33.64%), Leather without Hair (27.92%), Wheat (25.32%), Hard Board (25.00%), Wheat Flour (24.80%) and Wooven Fabrics (24.63%).

**Decreased:** Spices (36.40%), Other Cereal Flour (33.44%), Pulses (18.50%), Furnace Oil (3.76%), Other Food Products (3.61%), Fresh Fruits (3.54%), Bajra (2.72%), Other Oil Seeds (2.38%), Vegetable Ghee (2.05%) and Processed Liquid Milk (1.39%).



**Annexure A: Consumer Price Index Numbers by Commodity Groups & Commodities (2007-2008=100)**

Item and Specification	Weight	Index Numbers			% Change in Sep 2013 over			
		Sep 13	Aug 13	Sep 12	Aug 2013	Sep 2012		
<b>General</b>	<b>100.0000</b>	<b>185.18</b>	<b>185.71</b>	<b>172.44</b>	-	<b>0.29</b>	+	<b>7.39</b>
<b>Food &amp; Non-alcoholic Beverage</b>	<b>34.8343</b>	<b>208.29</b>	<b>211.91</b>	<b>193.80</b>	-	<b>1.71</b>	+	<b>7.48</b>
01 Wheat	0.3477	210.43	204.43	169.28	+	2.93	+	24.31
02 Wheat Flour	4.1648	219.75	213.76	177.85	+	2.80	+	23.56
03 Wheat Product	0.0959	200.79	196.14	170.63	+	2.37	+	17.68
04 Besan	0.1500	172.67	174.75	236.24	-	1.19	-	26.91
05 Rice	1.5821	191.49	190.71	170.51	+	0.41	+	12.30
06 Cereals	0.1563	225.08	223.43	199.55	+	0.74	+	12.79
07 Bakery & Confectionary	1.1550	192.20	186.63	171.50	+	2.98	+	12.07
08 Nimco	0.4574	212.27	210.08	195.37	+	1.04	+	8.65
09 Meat	2.4303	227.90	225.95	217.68	+	0.86	+	4.69
10 Chicken	1.3596	172.37	228.30	153.14	-	24.50	+	12.56
11 Fish	0.2970	204.54	202.20	184.50	+	1.16	+	10.86
12 Milk Fresh	6.6800	229.63	229.63	214.85	+	0.00	+	6.88
13 Milk Products	0.6338	224.25	223.35	208.08	+	0.40	+	7.77
14 Milk Powder	0.1129	196.38	192.47	182.22	+	2.03	+	7.77
15 Eggs	0.4555	200.85	177.43	183.56	+	13.20	+	9.42
16 Mustard Oil	0.0952	157.73	157.73	160.47	+	0.00	-	1.71
17 Cooking Oil	1.7538	161.00	160.17	164.65	+	0.52	-	2.22
18 Vegetable Ghee	2.0714	155.71	155.90	163.96	-	0.12	-	5.03
19 Dry Fruits	0.2543	219.52	218.07	200.92	+	0.66	+	9.26
20 Fresh Fruits	1.8649	192.94	228.27	207.64	-	15.48	-	7.08
21 Pulse Masoor	0.2712	158.34	156.96	143.69	+	0.88	+	10.20
22 Pulse Moong	0.2336	233.56	236.45	223.28	-	1.22	+	4.60
23 Pulse Mash (Washed)	0.2098	187.31	187.03	193.99	+	0.15	-	3.44
24 Pulse Gram	0.2361	165.50	170.97	240.06	-	3.20	-	31.06
25 Gram Whole	0.1616	176.72	180.87	228.39	-	2.29	-	22.62
26 Beans	0.0269	233.29	232.00	207.52	+	0.56	+	12.42
27 Potatoes	0.4598	236.99	226.71	206.16	+	4.53	+	14.95
28 Onion	0.5239	283.29	335.76	224.60	-	15.63	+	26.13
29 Tomatoes	0.4318	217.79	285.06	168.36	-	23.60	+	29.36
30 Fresh Vegetables	1.7105	230.51	219.98	213.15	+	4.79	+	8.14
31 Sugar	1.0445	194.50	195.15	193.11	-	0.33	+	0.72
32 Gur	0.0220	275.82	271.23	223.96	+	1.69	+	23.16
33 Honey	0.0446	257.91	256.90	238.98	+	0.39	+	7.92
34 SweetMeat	0.2483	217.22	214.63	202.90	+	1.21	+	7.06
35 Beverages	1.1990	187.70	189.21	170.37	-	0.80	+	10.17
36 Jam, Tomato Ketchup & Pickles	0.2454	188.19	187.53	174.05	+	0.35	+	8.12
37 Condiments	0.2656	219.19	217.77	212.32	+	0.65	+	3.24
38 Spices	0.5441	214.85	216.40	265.88	-	0.72	-	19.19
39 Tea	0.8377	254.67	253.02	202.17	+	0.65	+	25.97
<b>Alcoholic Beverages, Tobacco</b>	<b>1.4135</b>	<b>217.85</b>	<b>217.51</b>	<b>190.34</b>	+	<b>0.16</b>	+	<b>14.45</b>
40 Cigarettes	1.3906	218.30	217.97	190.53	+	0.15	+	14.58
41 Betel Leaves & Nuts	0.0229	190.83	189.38	178.59	+	0.77	+	6.85
<b>Clothing &amp; Footwear</b>	<b>7.5708</b>	<b>193.59</b>	<b>192.38</b>	<b>168.51</b>	+	<b>0.63</b>	+	<b>14.88</b>
42 Cotton Cloth	1.7286	180.48	179.59	155.96	+	0.50	+	15.72
43 Woolen Cloth	0.8759	208.95	208.28	188.17	+	0.32	+	11.04
44 Readymade Garments	0.9739	191.11	189.32	169.35	+	0.95	+	12.85
45 Woolen Readymade Garments	0.3964	194.99	192.45	165.18	+	1.32	+	18.05
46 Hosiery	0.5094	200.13	197.66	179.11	+	1.25	+	11.74
47 Dopatta	0.4412	209.40	207.23	183.24	+	1.05	+	14.28
48 Cleaning and Laundry	0.2110	212.30	210.77	186.62	+	0.73	+	13.76
49 Tailoring	0.8840	232.70	230.99	201.54	+	0.74	+	15.46
50 Footwear	1.5504	169.25	169.08	142.75	+	0.10	+	18.56

**Annexure A: Consumer Price Index Numbers by Commodity Groups & Commodities (2007-2008=100)**

Item and Specification	Weight	Index Numbers			% Change in Sep 2013 over			
		Sep 13	Aug 13	Sep 12	Aug 2013	Sep 2012		
<b><i>Housing, Water, Elec., Gas, Other</i></b>	<b>29.4149</b>	<b>157.75</b>	<b>157.59</b>	<b>147.99</b>	<b>+</b>	<b>0.10</b>	<b>+</b>	<b>6.60</b>
51 House Rent	21.8149	148.24	148.24	137.02	+	0.00	+	8.19
52 Construction Input Items	0.5623	217.40	215.23	200.34	+	1.01	+	8.52
53 Construction Wage Rates	0.3331	188.19	187.03	169.83	+	0.62	+	10.81
54 Water Supply	0.4971	145.80	141.53	133.23	+	3.02	+	9.43
55 Electricity	4.3985	196.37	196.37	196.37	+	0.00	+	0.00
56 Gas	1.5756	143.81	143.81	134.34	+	0.00	+	7.05
57 Kerosene Oil	0.0057	288.89	280.70	269.26	+	2.92	+	7.29
58 Firewood Whole	0.2277	249.90	245.25	227.21	+	1.90	+	9.99
<b><i>Furnished H.Hold Equip.&amp; Hous</i></b>	<b>4.2082</b>	<b>190.99</b>	<b>188.99</b>	<b>175.40</b>	<b>+</b>	<b>1.06</b>	<b>+</b>	<b>8.89</b>
59 Furniture	0.3315	180.68	178.39	165.35	+	1.28	+	9.27
60 Household Textiles	0.6489	186.39	183.82	171.59	+	1.40	+	8.63
61 Household Equipment	0.5936	163.50	163.24	156.33	+	0.16	+	4.59
62 Utensils	0.3212	189.05	187.69	173.70	+	0.72	+	8.84
63 Plastic Products	0.2547	186.86	185.38	174.14	+	0.80	+	7.30
64 Washing Soaps & Detergents	0.7893	210.04	207.01	190.56	+	1.46	+	10.22
65 Sewing Needle & Dr Cell	0.1496	168.44	168.42	149.01	+	0.01	+	13.04
66 Household Servant	1.0432	202.20	199.82	183.91	+	1.19	+	9.95
67 Marriage Hall Charges	0.0762	204.59	202.60	189.76	+	0.98	+	7.82
<b><i>Health</i></b>	<b>2.1868</b>	<b>164.23</b>	<b>162.32</b>	<b>153.94</b>	<b>+</b>	<b>1.18</b>	<b>+</b>	<b>6.68</b>
68 Drugs & Medicines	1.2667	142.09	141.30	137.28	+	0.56	+	3.50
69 Medical Equipments	0.0080	208.73	205.83	194.20	+	1.41	+	7.48
70 Doctor (MBBS) Clinic Fee	0.5904	212.47	207.25	189.17	+	2.52	+	12.32
71 Medical Tests	0.3217	161.78	161.52	153.85	+	0.16	+	5.15
<b><i>Transport</i></b>	<b>7.2023</b>	<b>194.54</b>	<b>190.63</b>	<b>194.25</b>	<b>+</b>	<b>2.05</b>	<b>+</b>	<b>0.15</b>
72 Motor Vehicles	0.6630	159.74	158.44	151.17	+	0.82	+	5.67
73 Motor Vehicle Accessories	0.2439	219.28	218.09	204.52	+	0.55	+	7.22
74 Motor Fuel	3.0269	190.34	184.92	201.27	+	2.93	-	5.43
75 Mechanical Service	0.4552	195.60	192.91	180.11	+	1.39	+	8.60
76 Motor Vehicle Tax	0.1099	153.74	153.74	152.02	+	0.00	+	1.13
77 Transport Services	2.7034	207.03	203.54	200.12	+	1.71	+	3.45
<b><i>Communication</i></b>	<b>3.2198</b>	<b>129.66</b>	<b>129.65</b>	<b>123.56</b>	<b>+</b>	<b>0.01</b>	<b>+</b>	<b>4.94</b>
78 Postal Services	0.0662	215.89	215.89	171.43	+	0.00	+	25.93
79 Communication & Apparatus	3.1536	127.85	127.84	122.56	+	0.01	+	4.32
<b><i>Recreation &amp; Culture</i></b>	<b>2.0227</b>	<b>181.87</b>	<b>181.28</b>	<b>165.24</b>	<b>+</b>	<b>0.33</b>	<b>+</b>	<b>10.06</b>
80 Recreation & Culture	0.8634	124.90	124.61	121.68	+	0.23	+	2.65
81 Text Books	0.5706	266.88	266.87	230.23	+	0.00	+	15.92
82 Newspapers	0.1934	170.49	170.49	154.22	+	0.00	+	10.55
83 Stationery	0.3953	189.17	186.81	171.95	+	1.26	+	10.01
<b><i>Education</i></b>	<b>3.9431</b>	<b>166.49</b>	<b>166.03</b>	<b>153.87</b>	<b>+</b>	<b>0.28</b>	<b>+</b>	<b>8.20</b>
84 Education	3.9431	166.49	166.03	153.87	+	0.28	+	8.20
<b><i>Restaurants &amp; Hotels</i></b>	<b>1.2286</b>	<b>221.68</b>	<b>216.32</b>	<b>197.85</b>	<b>+</b>	<b>2.48</b>	<b>+</b>	<b>12.04</b>
85 Readymade Food	1.2286	221.68	216.32	197.85	+	2.48	+	12.04
<b><i>Miscellaneous Goods &amp; Service</i></b>	<b>2.7550</b>	<b>206.86</b>	<b>204.07</b>	<b>195.65</b>	<b>+</b>	<b>1.37</b>	<b>+</b>	<b>5.73</b>
86 Personal Care	1.4935	188.30	187.02	176.39	+	0.68	+	6.75
87 Cosmetics	0.3853	169.63	168.14	148.59	+	0.89	+	14.16
88 Blades	0.0322	180.16	178.04	169.80	+	1.19	+	6.10
89 Personal Equipments	0.8440	257.70	251.61	252.20	+	2.42	+	2.18

## Annexure B: Wholesale Price Indices by Major Groups &amp; Commodities

(2007-2008=100)

Item and Specification	Weight	Index Numbers			% Change in Sep 2013 over	
		Sep 13	Aug 13	Sep 12	Aug 2013	Sep 2012
<b>General</b>	<b>100.0000</b>	<b>209.33</b>	<b>207.85</b>	<b>192.66</b>	<b>+ 0.71</b>	<b>+ 8.65</b>
<b>Agriculture Forestry &amp; Fisher</b>	<b>25.7674</b>	<b>218.32</b>	<b>218.23</b>	<b>194.63</b>	<b>+ 0.04</b>	<b>+ 12.17</b>
001 Wheat	0.6297	221.91	215.13	177.08	+ 3.15	+ 25.32
002 Maize	0.6764	193.51	194.89	174.03	- 0.71	+ 11.19
003 Rice	2.4413	178.15	177.57	162.33	+ 0.33	+ 9.75
004 Sorghum / Jowar	0.0214	266.44	265.69	197.09	+ 0.28	+ 35.19
005 Millet / Bajra	0.0374	187.35	190.24	192.59	- 1.52	- 2.72
006 Vegetables	1.2441	314.40	297.02	253.47	+ 5.85	+ 24.04
007 Fresh Fruits	1.5144	220.14	245.49	228.22	- 10.33	- 3.54
008 Dry Fruits	0.2478	188.16	191.77	173.12	- 1.88	+ 8.69
009 Cotton Seeds	1.1511	165.07	165.07	162.42	+ 0.00	+ 1.63
010 Other Oil Seeds	0.0722	175.36	173.57	179.64	+ 1.03	- 2.38
011 Edible Roots / Potatoes	0.2540	231.30	217.93	201.22	+ 6.13	+ 14.95
012 Stimulant & Spice Crops	0.1634	254.77	241.41	166.95	+ 5.53	+ 52.60
013 Pulses	0.4901	176.48	180.97	216.53	- 2.48	- 18.50
014 Sugar Crops	1.0725	267.92	267.92	267.92	+ 0.00	+ 0.00
015 Fibre Crops	5.3169	219.53	214.52	180.60	+ 2.34	+ 21.56
016 Unmanufactured Tobacco	0.0742	181.07	176.34	168.46	+ 2.68	+ 7.49
017 Poultry	0.5633	177.47	237.40	152.21	- 25.24	+ 16.60
018 Raw Milk from Bovine Animals	7.0279	222.52	221.65	208.85	+ 0.39	+ 6.55
019 Eggs	0.5034	205.51	180.14	192.74	+ 14.08	+ 6.63
020 Raw Animal Materials / Wool	0.0351	153.55	153.23	135.45	+ 0.21	+ 13.36
021 Hides & Fur Skins, Raw	0.4834	145.03	140.87	137.35	+ 2.95	+ 5.59
022 Fuel Wood in Logs	0.0179	234.96	231.13	204.59	+ 1.66	+ 14.84
023 Fish Live Fresh or Chilled	1.7295	249.62	250.91	176.07	- 0.51	+ 41.77
<b>Ores/Minerals, Elec., Gas &amp; W</b>	<b>12.0389</b>	<b>240.04</b>	<b>239.51</b>	<b>207.86</b>	<b>+ 0.22</b>	<b>+ 15.48</b>
024 Coal not Agglomerated	0.7508	223.53	223.53	196.08	+ 0.00	+ 14.00
025 Natural Gas Liquified	5.7385	204.58	203.57	192.41	+ 0.50	+ 6.33
026 Salt & Pure Sodium Chloride	0.0584	217.04	205.80	162.41	+ 5.46	+ 33.64
027 Electrical Energy	5.4912	279.61	279.61	226.10	+ 0.00	+ 23.67
<b>Food, Beverages, Tobacco, Textil</b>	<b>31.1122</b>	<b>199.08</b>	<b>197.43</b>	<b>184.53</b>	<b>+ 0.84</b>	<b>+ 7.88</b>
<b>Food Products, Beverages &amp;</b>	<b>20.0718</b>	<b>199.98</b>	<b>199.00</b>	<b>189.86</b>	<b>+ 0.49</b>	<b>+ 5.33</b>
028 Meat of Animals	3.4559	233.93	233.93	226.71	+ 0.00	+ 3.18
029 Vegetables & Fruit Juice	0.0058	192.05	191.31	183.67	+ 0.39	+ 4.56
030 Dried Fruits & Nuts	0.1733	223.21	223.20	217.12	+ 0.00	+ 2.80
031 Fruit Juices	0.3880	165.08	165.05	156.65	+ 0.02	+ 5.38
032 Vegetable Oils Refined	1.9242	161.04	160.13	157.46	+ 0.57	+ 2.27
033 Vegetable Ghee	1.5632	140.69	140.30	143.63	+ 0.28	- 2.05
034 Oil Cakes	0.9611	176.21	174.89	164.48	+ 0.75	+ 7.13
035 Processed Liquid Milk	4.4437	205.54	205.54	208.43	+ 0.00	- 1.39
036 Milk & Cream in Solid Form	0.0316	179.40	179.40	171.00	+ 0.00	+ 4.91
037 Ice Cream	0.0047	209.53	209.53	170.00	+ 0.00	+ 23.25
038 Dairy Products N.E.C	0.0117	216.63	212.59	204.36	+ 1.90	+ 6.00
039 Wheat Flour	2.3034	202.67	195.91	162.40	+ 3.45	+ 24.80
040 Other Cereal Flour	0.0604	138.44	144.64	207.98	- 4.29	- 33.44
041 Sugar Refined	1.7975	212.34	211.85	198.63	+ 0.23	+ 6.90
042 Chocolate	0.0139	99.19	99.19	99.19	+ 0.00	+ 0.00
043 Sugar Confectionary	0.0738	102.28	102.28	100.40	+ 0.00	+ 1.87
044 Coffee & Tea	0.7303	230.54	230.71	190.66	- 0.07	+ 20.92
045 Spices	0.1449	195.85	195.67	307.94	+ 0.09	- 36.40
046 Other Food Products	0.0336	316.68	316.68	328.55	+ 0.00	- 3.61
047 Mineral Water	0.0207	180.22	180.22	166.05	+ 0.00	+ 8.53
048 Beverages	0.6303	139.63	139.63	135.30	+ 0.00	+ 3.20
049 Tobacco Products	1.2998	242.41	242.41	208.80	+ 0.00	+ 16.10
<b>Textiles &amp; Apparels</b>	<b>10.3289</b>	<b>198.31</b>	<b>195.98</b>	<b>178.72</b>	<b>+ 1.19</b>	<b>+ 10.96</b>
050 Cotton Yarn	5.2491	222.40	217.78	200.46	+ 2.12	+ 10.94
051 Nylon Yarn	0.1719	182.19	187.63	176.45	- 2.90	+ 3.25
052 Blended Yarn	0.1689	200.64	198.41	188.46	+ 1.12	+ 6.46
053 Woven Fabrics	0.0128	217.16	217.16	174.25	+ 0.00	+ 24.63
054 Cotton Fabrics	0.6343	187.43	187.43	172.55	+ 0.00	+ 8.62
055 Other Fabrics	1.1016	175.74	175.74	164.13	+ 0.00	+ 7.07
056 Silk & Reyon Fabrics	0.7350	160.08	160.08	143.52	+ 0.00	+ 11.54
057 Towels	0.1235	218.47	216.98	193.36	+ 0.69	+ 12.99

## Annexure B: Wholesale Price Indices by Major Groups &amp; Commodities

(2007-2008=100)

Item and Specification	Weight	Index Numbers			% Change in Sep 2013 over		
		Sep 13	Aug 13	Sep 12	Aug 2013	Sep 2012	
058 Blankets	0.0029	185.21	185.21	172.59	+	0.00	+ 7.31
059 Bed Sheets	0.0913	217.78	215.79	194.91	+	0.92	+ 11.73
060 Quilts	0.0019	156.32	156.32	147.05	+	0.00	+ 6.30
061 Woolen Carpets	0.0383	106.55	106.55	106.55	+	0.00	+ 0.00
062 Synthetic Carpets	0.0566	114.41	114.41	113.15	+	0.00	+ 1.11
063 Hosiery Products	0.8832	185.30	185.30	163.76	+	0.00	+ 13.15
064 Readymade Garments	1.0576	152.13	152.13	128.64	+	0.00	+ 18.26
<b>Leather Products</b>	<b>0.7115</b>	<b>184.76</b>	<b>173.96</b>	<b>118.56</b>	+	<b>6.21</b>	+ <b>55.84</b>
065 Leather Without Hair	0.2973	140.50	136.23	109.83	+	3.13	+ 27.92
066 Other Leather N.E.C	0.2567	263.79	238.82	122.57	+	10.46	+ <u>115.2</u>
067 Footwears	0.1575	139.49	139.49	128.50	+	0.00	+ 8.55
<b>Other Transportable Goods</b>	<b>22.3659</b>	<b>213.44</b>	<b>209.59</b>	<b>207.14</b>	+	<b>1.84</b>	+ <b>3.04</b>
068 Timber	0.0165	161.45	160.48	148.07	+	0.60	+ 9.04
069 Printing Paper	0.4279	164.84	164.45	153.92	+	0.24	+ 7.09
070 Hard Board	0.1579	208.33	200.00	166.67	+	4.17	+ 25.00
071 Coke	0.2797	163.45	163.45	163.45	+	0.00	+ 0.00
072 Motor Spirit	1.5336	184.38	176.54	177.23	+	4.44	+ 4.03
073 Diesel Oil	5.2664	270.32	264.12	272.24	+	2.35	- 0.71
074 Kerosine Oil	0.2151	282.64	270.07	275.06	+	4.65	+ 2.76
075 Furnace Oil	3.2664	179.02	172.70	186.02	+	3.66	- 3.76
076 Mobil Oil	0.7114	192.70	191.04	179.59	+	0.87	+ 7.30
077 Chemicals	1.7720	165.49	164.53	148.29	+	0.58	+ 11.60
078 Dyeing Material	0.1539	104.26	107.23	104.26	-	2.77	+ 0.00
079 Fertilizers	2.8657	269.45	269.62	258.16	-	0.06	+ 4.37
080 Pesticides	0.2763	213.45	212.36	197.39	+	0.51	+ 8.14
081 Insecticides	0.1276	129.93	124.43	117.64	+	4.42	+ 10.45
082 Paints & Varnishes	0.1916	247.70	247.56	233.80	+	0.06	+ 5.95
083 Medicines	1.1428	138.77	138.85	139.44	-	0.06	- 0.48
084 Soaps & Detergents	0.8168	178.79	177.56	158.01	+	0.69	+ 13.15
085 Auto Tyres	0.2703	185.57	185.57	180.62	+	0.00	+ 2.74
086 Plastic Products	0.4550	199.06	199.06	191.31	+	0.00	+ 4.05
087 Glass sheets	0.2089	204.55	203.49	190.93	+	0.52	+ 7.13
088 Other Glass Articles	0.1635	206.09	206.09	189.11	+	0.00	+ 8.98
089 Ceramics & Sanitary Fixture	0.0244	166.88	165.08	157.32	+	1.09	+ 6.08
090 Bricks, Blocks & Tiles	0.1566	188.17	186.85	172.01	+	0.71	+ 9.39
091 Cement	1.8145	201.55	194.84	180.43	+	3.44	+ 11.71
092 Bed Foam	0.0006	145.33	144.33	140.00	+	0.69	+ 3.81
093 Matches	0.0505	143.20	143.20	122.82	+	0.00	+ 16.59
<b>Metal Product, Machinery &amp; Eq</b>	<b>8.7156</b>	<b>166.39</b>	<b>166.14</b>	<b>157.74</b>	+	<b>0.15</b>	+ <b>5.48</b>
094 Pig Iron	0.0593	128.97	128.97	128.97	+	0.00	+ 0.00
095 Steel Bar & Sheets	1.4022	141.14	140.51	137.60	+	0.45	+ 2.57
096 Pipe Fittings	0.0780	150.29	149.13	141.47	+	0.78	+ 6.23
097 Steel Products	0.3879	168.46	167.61	160.60	+	0.51	+ 4.89
098 Engines & Motors	0.0046	109.07	109.07	109.07	+	0.00	+ 0.00
099 Vacuum Pumps	0.0155	115.39	115.39	115.39	+	0.00	+ 0.00
100 Air Conditioners	0.0049	179.78	179.78	172.67	+	0.00	+ 4.12
101 Cultivators	0.0551	191.51	189.23	184.66	+	1.20	+ 3.71
102 Chuff Cutter	0.1293	144.94	144.94	138.54	+	0.00	+ 4.62
103 Tractors	0.0028	161.96	161.96	161.96	+	0.00	+ 0.00
104 Lathe Machines	0.0525	148.86	147.68	147.68	+	0.80	+ 0.80
105 Concrete Mixture	0.0107	138.83	138.83	138.83	+	0.00	+ 0.00
106 Fridge, WashM, SewM, Fans, Iron	1.1645	180.51	179.92	163.64	+	0.33	+ 10.31
107 Electric Wires	0.0912	168.13	168.13	159.57	+	0.00	+ 5.36
108 Lighting Equipments	1.4431	162.27	162.27	144.85	+	0.00	+ 12.03
109 Radio & Television	0.1843	126.49	126.49	126.46	+	0.00	+ 0.02
110 Motor Vehicles	0.0244	174.21	173.99	167.04	+	0.13	+ 4.29
111 Motorcycles	0.2570	124.80	124.80	125.19	+	0.00	- 0.31
112 Bicycles	3.3483	180.99	180.99	175.08	+	0.00	+ 3.38