



Monthly Review on Price Indices



May, 2013
(Base 2007-08)

Government of Pakistan
Statistics Division
Pakistan Bureau of Statistics
Islamabad

Inflation in Brief

1. CPI inflation, General, increased by 5.1% on year-on-year basis in May 2013 as compared to 5.8% in the previous month and 12.3% in May 2012. On month-on-month basis, it increased by 0.5% in May 2013 as compared to 1.1% in the previous month and an increase of 1.1% in May 2012.
2. Core inflation measured by non-food non-energy CPI (Core NFNE) increased by 8.1% in May 2013 as compared to 8.7% in April 2013 (YoY) and by 11.1% in May 2012. Core NFNE inflation on MoM basis increased by 0.3% in May 2013 as compared to 1.1% a month earlier and 0.8% in May 2012.
3. Core inflation, measured by 20% weighted trimmed mean CPI (Core Trimmed) increased by 6.7% in May 2013 and by 7.6% in April 2013 (YoY) which increased by 11.7% in May 2012. Core Trimmed inflation has increased by 0.3% on MoM basis in May 2013 as compared to 0.7% in April 2013 which increased by 0.5% in May 2012.
4. SPI inflation on YoY basis increased by 6.8% in May 2013 as compared with 6.6% a month earlier and 8.1% in May 2012. On MoM basis, it increased by 0.1% in May 2013 as compared to a decrease of 0.3% a month earlier and also decreased by 0.1% in May 2012.
5. WPI inflation on YoY basis increased to 4.1% in May 2013 compared with 6.8% a month earlier and 7.1% in May 2012. WPI inflation on MoM basis decreased by 0.4% in May 2013 as compared to an increase of 0.8% a month earlier and increased by 2.1% in May 2012.
6. Figures 1 and 2 show graphically the data of Table 1. Table 1.1 shows "Period Average" and "YoY" percent changes in indices of three years.

Table 1: Inflation (%) (Base 2007-08)

Period	CPI						Core Inflation				SPI**		WPI	
	General		Food		Non-food		NFNE*		Trimmed		YoY	MoM	YoY	MoM
	YoY	MoM	YoY	MoM	YoY	MoM	YoY	MoM	YoY	MoM				
Apr 12	11.3	1.8	10.7	2.2	11.6	1.6	10.8	1.4	11.0	1.3	7.5	1.7	3.8	1.8
May 12	12.3	1.1	11.3	0.2	13.1	1.9	11.1	0.8	11.7	0.5	8.1	-0.1	7.1	2.1
Jun 12	11.3	0.0	10.3	-0.2	12.0	0.2	11.4	0.7	11.1	0.5	9.7	1.4	6.4	0.0
Jul 12	9.6	-0.2	9.1	1.8	10.0	-1.7	11.3	1.0	10.7	0.7	7.7	0.5	7.2	0.4
Aug 12	9.1	0.9	8.5	0.9	9.4	0.9	10.8	0.3	10.6	0.4	8.2	1.3	7.7	1.0
Sep 12	8.8	0.8	7.6	0.7	9.7	0.9	10.4	0.4	10.4	0.5	8.0	1.2	7.8	0.3
Oct 12	7.7	0.4	5.8	-0.1	9.1	0.7	10.1	1.2	9.7	0.7	6.7	-0.4	7.5	0.1
Nov 12	6.9	-0.4	5.3	-0.3	8.1	-0.4	9.7	0.2	8.8	0.2	6.0	0.0	7.7	-0.4
Dec 12	7.9	0.2	7.7	0.0	8.1	0.4	9.8	0.5	9.2	0.3	8.2	0.0	9.6	0.4
Jan 13	8.1	1.7	8.1	1.9	8.1	1.5	9.9	1.2	9.9	1.0	9.2	1.9	8.6	1.2
Feb 13	7.4	-0.3	7.4	-1.3	7.4	0.3	9.6	0.4	9.2	0.2	9.4	0.1	8.3	0.3
Mar 13	6.6	0.4	6.3	0.5	6.7	0.3	9.0	0.4	8.4	0.2	8.7	0.8	7.9	0.3
Apr 13	5.8	1.1	5.5	1.4	6.0	0.9	8.7	1.1	7.6	0.7	6.6	-0.3	6.8	0.8
May 13	5.1	0.5	6.5	1.1	4.1	0.1	8.1	0.3	6.7	0.3	6.8	0.1	4.1	-0.4

*NFNE is non-food non-energy,

** SPI for quintile 1

Table 1.1 : Period Average and YoY % Changes of Indices (Base 2007-08)

Index	Averages July-May % Changes			May over May % Changes		
	2012-13	2011-12	2010-11	2012-13	2011-12	2010-11
CPI	7.51	10.97	13.69	5.13	12.29	12.65
SPI	7.76	6.84	16.91	6.78	8.08	13.74
WPI	7.55	10.83	21.10	4.10	7.06	22.28

Figure 1: CPI Inflation YoY, Special Indices

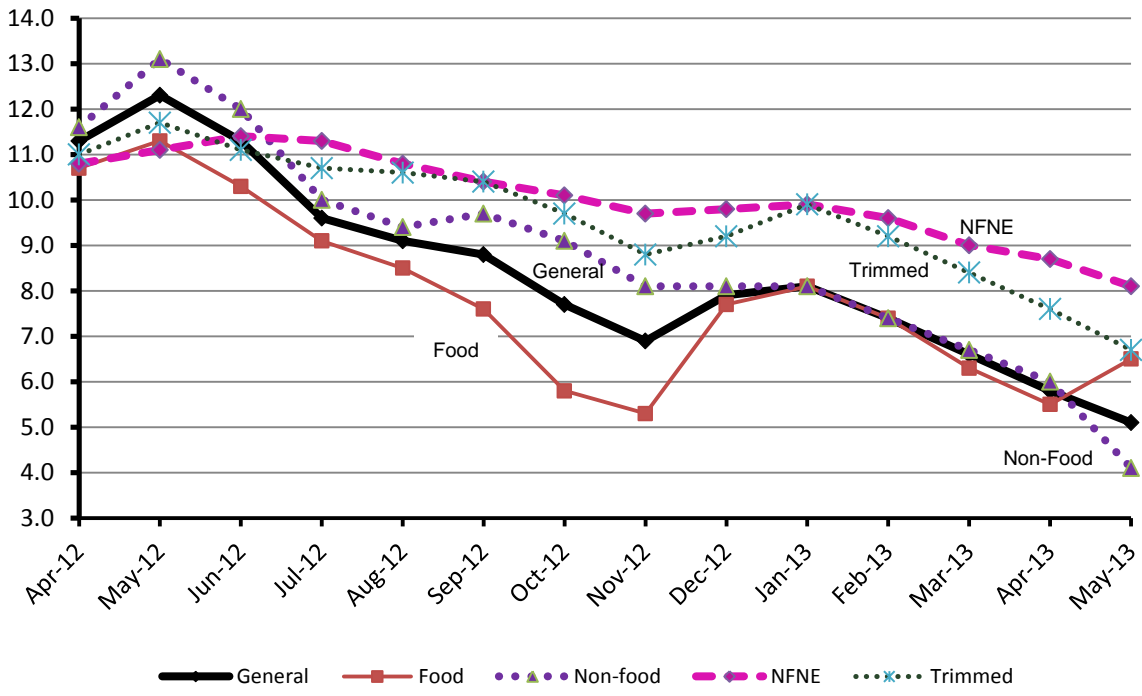
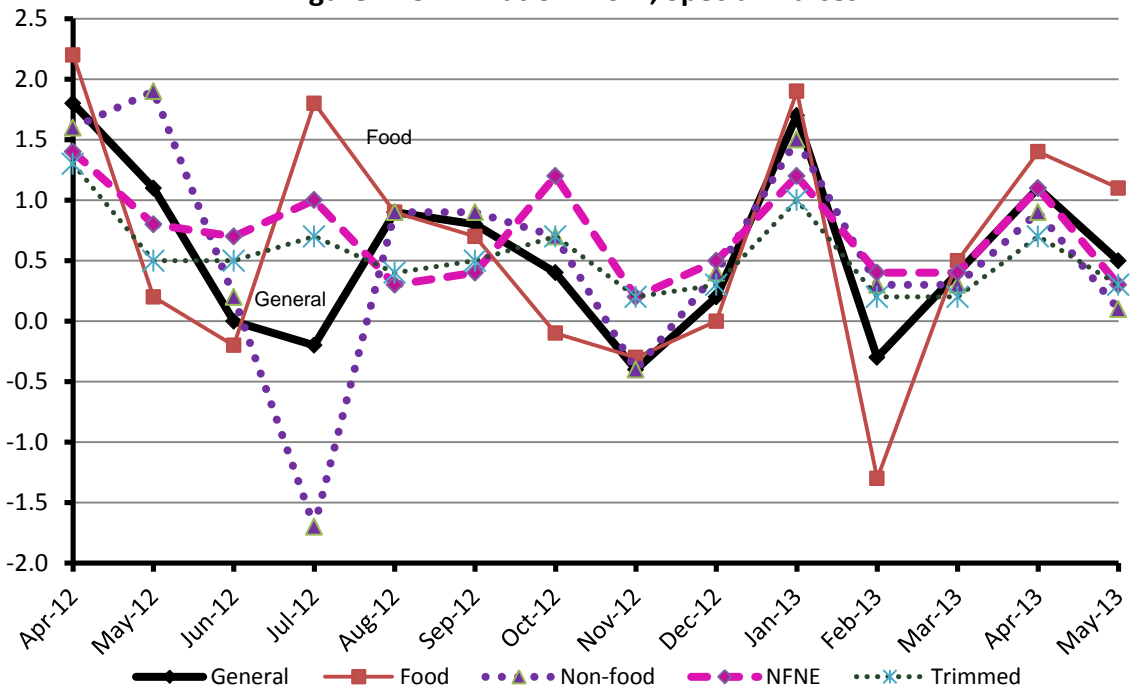


Figure 2: CPI Inflation MoM, Special Indices



I. Consumer Price Index (CPI)

The Consumer Price Index of May, 2013 has increased by 0.51% over April 2013 and increased by 5.13% over corresponding month of last year.

Table 2 : Consumer Price Index by Group of Commodities and Services (Base 2007-08)

No	Group	Group Weight (%)	Indices			% Change May 2013 over		Impact (In % points) May 2013 over	
			May 2013	Apr 2013	May 2012	Apr 2013	May 2012	Apr 2013	May 2012
	General	100.00	178.65	177.74	169.93	0.51	5.13	0.51	5.13
1.	Food & Non-alcoholic Bev.	34.83	200.01	197.62	188.29	1.21	6.22	0.47	2.42
	<i>Non-perishable Food Items</i>	29.84	197.71	197.04	187.71	0.34	5.33	0.11	1.65
	<i>Perishable Food Items</i>	4.99	213.76	201.07	191.79	6.31	11.46	0.36	0.77
2.	Alcoholic Bev. & Tobacco	1.41	191.19	191.16	169.22	0.02	12.98	0.00	0.18
3.	Clothing & Footwear	7.57	183.74	182.25	163.22	0.82	12.57	0.06	0.91
4.	Housing, Water, Electricity, Gas & Fuels	29.41	154.54	154.54	153.27	0.00	0.83	0.00	0.22
5.	Furnishing & Household Equipment Maintenance	4.21	184.71	183.59	171.52	0.61	7.69	0.03	0.33
6.	Health	2.19	160.24	159.34	144.07	0.56	11.22	0.01	0.21
7.	Transport	7.20	185.52	187.70	185.93	-1.16	-0.22	-0.09	-0.02
8.	Communication	3.22	128.71	128.64	122.38	0.05	5.17	0.00	0.12
9.	Recreation & Culture	2.03	176.58	175.62	163.95	0.55	7.70	0.01	0.15
10.	Education	3.94	162.17	161.66	151.31	0.32	7.18	0.01	0.25
11.	Restaurants & Hotels	1.23	209.95	208.62	193.79	0.64	8.34	0.01	0.12
12.	Miscellaneous	2.76	202.61	202.51	188.15	0.05	7.69	0.00	0.23

Main contributors to month-on-month and year-on-year percentage changes are given below and detail is given in Annexure A.

1. **Month-on-month** Top few commodities which varied from previous month i.e. April 2013 are given below:-

Food Items Increased: Fresh Fruits (11.99%), Fresh Vegetables (11.87%), Potatoes (8.09%), Gur (4.66%), Pulse Masoor (2.67%), Chicken (2.53%), Tea (1.82%), Jam, Tomatoe Ketchup & Pickles (1.12%), Betel Leaves & Nuts (0.98%) and Beverages (0.87%).

Decreased: Onions (12.0%), Tomatoes (6.06%), Pulse Gram (5.14%), Besan (4.95%), Eggs (3.42%), Gram Whole (3.18%), Wheat (3.0%), Fish (1.59%), Wheat Product (1.22%), Mustard Oil (1.12%), Spices (0.61%), Beans (0.50%) and Sugar (0.24%).

Non-food Items Increased: Sewing Needle & Dry Cell (6.78%), Cleaning & Laundry (2.06%), Cotton Cloth (1.47%), Personal Care (1.29%), Marriage Hall Charges (1.27%), Medical Equipments (1.18%), Utensils (1.11%), Stationery (1.04%), Tailoring (1.02%), Doctor (MBBS) Clinic Fee (1.02%) and Cosmetics (0.92%).

Decreased: Motor Fuel (3.22%), Kerosene Oil (2.60%), Personal Equipments (1.73%) and Firewood Whole (1.72%).

2. **Year-on-year:** Top few commodities which varied from previous year i.e. May 2012 are given below:-

Food Items Increased: Onions (106.67%), Tomatoes (77.52%), Fresh Vegetables (29.64%), Tea (17.55%), Wheat Flour (17.22%), Wheat (15.49%), Honey (15.41%), Cigarettes (13.15%), Wheat Product (12.69%), Rice (11.39%), Cereals (11.15%) and Milk Powder (10.18%).

Decreased: Pulse Gram (21.09%), Spices (19.29%), Gram Whole (16.21%), Chicken (15.25%), Fresh Fruits (13.80%), Besan (12.73%), Potatoes (12.54%), Pulse Mash (8.60%), Eggs (8.19%), Pulse Moong (8.05%), Vegetable Ghee (4.92%) and Sugar (2.82%).

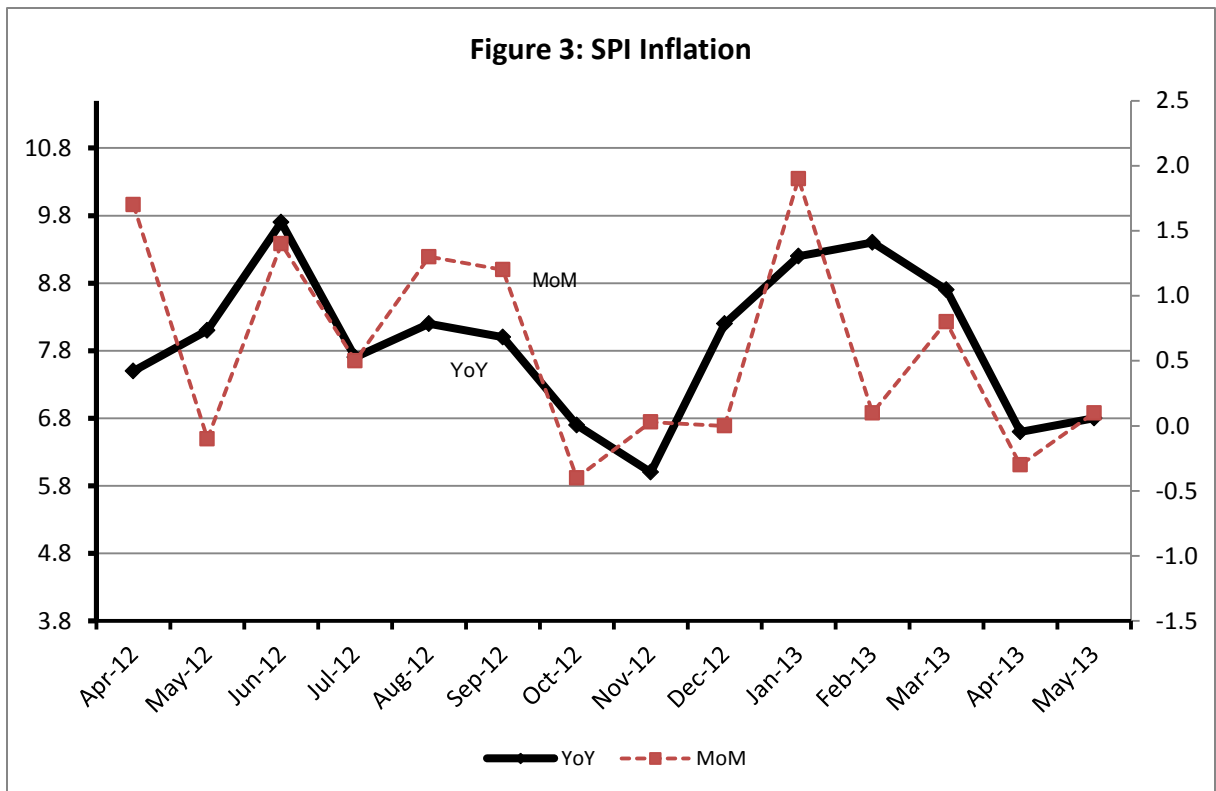
Non-food Items Increased: Woolen Readymade Garments (19.53%), Dopatta (16.84%), Cleaning & Laundry (16.19%), Cotton Cloth (14.97%), Doctor (MBBS) Clinic Fee (14.48%), Newspapers (13.68%), Tailoring (13.21%), Readymade Garments (12.91%), Hosiery (12.57%), Medical Equipments (12.21%) and Text Books (11.74%).

Decreased: Gas (46.08%), Motor Fuel (9.25%) and Kerosene Oil (0.34%).

III. Sensitive Price Indicator

Quintile-wise percentage changes YoY and MoM are given below in Table 3. The series from April 2012 to May 2013 is also graphed below in Figure 3.

Table 3 : Sensitive Price Indicator (Base 2007-08)					
Quintiles	Indices			% Change May 2013 over	
	May 2013	Apr 2013	May 2012	Apr 2013	May 2012
1	186.57	186.44	174.72	0.07	6.78
2	192.84	192.67	179.47	0.09	7.45
3	191.49	191.35	178.88	0.07	7.05
4	192.79	192.76	187.24	0.02	2.96
5	192.96	193.28	193.03	-0.17	-0.04
Combined	191.96	192.02	184.88	-0.03	3.83



IV. Wholesale Price Index

The Wholesale Price Index for May 2013 decreased by 0.43% over April 2013. It increased by 4.10% over the corresponding month of the last year. YoY and MoM movements, from April 2012 to May 2013 are also graphed below in Figure 4.

Table 4 : Wholesale Price Index by Group of Commodities (Base 2007-08)

No.	Group	Group Weight (%)	Indices			% Change May 2013 over		Impact (in %age points) May 2013 over	
			May 2013	Apr 2013	May 2012	Apr 2013	May 2012	Apr 2013	May 2012
	General	100.00	197.23	198.09	189.46	-0.43	4.10	-0.43	4.10
1.	Agriculture, Forestry & Fishery Products	25.77	204.69	205.04	185.78	-0.17	10.18	-0.04	2.57
2.	Ores & Minerals, Electricity, Gas & Water	12.04	213.53	213.96	214.79	-0.20	-0.59	-0.03	-0.08
3.	Food Products, Beverages & Tobacco, Textiles, Apparel & Leather Products	31.11	191.52	191.67	179.06	-0.08	6.96	-0.02	2.05
	i. Food Products, Bev. & Tobacco	20.07	194.18	193.47	181.46	0.37	7.01	0.07	1.35
	ii. Textiles and Apparel	10.33	190.09	193.04	178.57	-1.53	6.45	-0.15	0.63
	iii. Leather Products	0.71	237.06	120.99	118.56	13.28	15.60	0.06	0.07
4.	Other Transportable Goods except Metal Products, Machinery & Equipments	22.37	201.98	205.35	207.39	-1.64	-2.61	-0.38	-0.64
5.	Metal Products, Machinery & Equipments	8.72	160.87	159.93	156.46	0.59	2.82	0.04	0.20

Main contributors to month-on-month and year-on-year percentage changes are given below and detail is given in Annexure B.

1. **Month-on-month** Top few commodities which varied from previous month i.e. April 2013 are given below:-

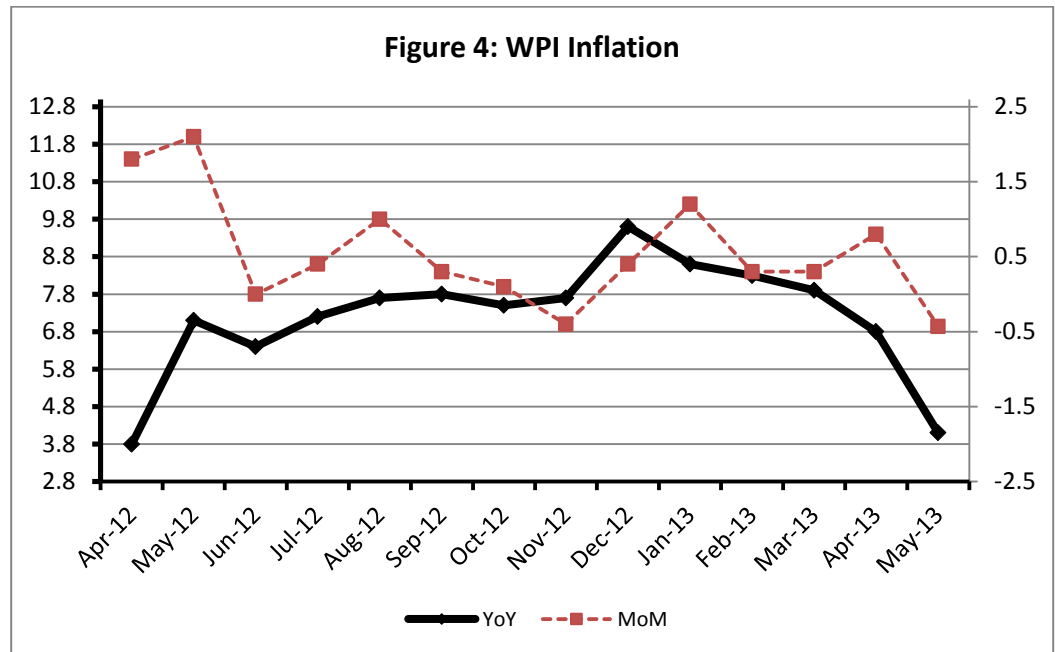
Increased: Other Leather N.E.C (30.86%), Edible Roots/ Potatoes (12.04%), Vegetables (10.04%), Jowar (9.00%), Poultry (5.47%), Bajra & Leather without Hair (5.27% each), Raw Animal Material/ Wool (5.07%), Salt and Pure Sodium Chloride (4.36%) and other Glass Articles (3.29%).

Decreased: Fibre Crops (6.27%), Eggs (6.06%), Spices (5.10%), Motor Spirit (4.61%), Kerosene Oil (4.17%), Cotton Yarn (3.49%), Diesel Oil (3.26%), Wheat (3.14%), Furnace Oil (3.02%) and Cotton Seeds (1.94%).

2. Year-on-year Top few commodities which varied from previous year i.e. May, 2012 are given below:-

Increased: Vegetables (53.57%), Fish (38.60%), Other Leather N.E.C (30.86%), Salt and Pure Sodium Chloride (22.92%), Woven Fabrics (21.82%), Oil Cakes (21.27%), Bed sheets (20.92%), Pesticides (20.61%), Fibre Crops (20.27%) and Stimulants & Spice Crops (19.44%).

Decreased: Fresh Fruits (22.24%), Spices (21.44%), Synthetic Carpets (20.59%), other Cereal Flour (20.44%), Furnace Oil (19.64%), Pulses (18.18%), Edible Roots/Potatoes (10.22%), Eggs (7.82%), other Glass Articles (7.19%) and Tractors (6.03%).



Annexure A: Consumer Price Index Numbers by Commodity Groups & Commodities (2007-2008=100)

Item and Specification	Weight	Index Numbers			% Change in May 2013 over	
		May 13	Apr 13	May 12	Apr 2013	May 2012
General	100.0000	178.65	177.74	169.93	+ 0.51	+ 5.13
Food & Non-alcoholic Beverage	34.8343	200.01	197.62	188.29	+ 1.21	+ 6.22
01 Wheat	0.3477	183.40	189.08	158.80	- 3.00	+ 15.49
02 Wheat Flour	4.1648	194.69	193.86	166.09	+ 0.43	+ 17.22
03 Wheat Product	0.0959	184.94	187.22	164.11	- 1.22	+ 12.69
04 Besan	0.1500	203.36	213.94	233.03	- 4.95	- 12.73
05 Rice	1.5821	184.12	182.84	165.29	+ 0.70	+ 11.39
06 Cereals	0.1563	214.75	213.49	193.20	+ 0.59	+ 11.15
07 Bakery & Confectionary	1.1550	182.58	182.03	168.77	+ 0.30	+ 8.18
08 Nimco	0.4574	203.68	202.35	193.14	+ 0.66	+ 5.46
09 Meat	2.4303	222.80	221.88	213.99	+ 0.41	+ 4.12
10 Chicken	1.3596	171.66	167.42	202.55	+ 2.53	- 15.25
11 Fish	0.2970	199.39	202.61	198.34	- 1.59	+ 0.53
12 Milk Fresh	6.6800	222.36	221.39	204.07	+ 0.44	+ 8.96
13 Milk Products	0.6338	213.82	212.73	201.63	+ 0.51	+ 6.05
14 Milk Powder	0.1129	189.99	188.72	172.44	+ 0.67	+ 10.18
15 Eggs	0.4555	157.44	163.02	171.49	- 3.42	- 8.19
16 Mustard Oil	0.0952	158.01	159.80	159.53	- 1.12	- 0.95
17 Cooking Oil	1.7538	162.20	161.31	154.79	+ 0.55	+ 4.79
18 Vegetable Ghee	2.0714	155.64	155.79	163.69	- 0.10	- 4.92
19 Dry Fruits	0.2543	213.78	211.97	200.77	+ 0.85	+ 6.48
20 Fresh Fruits	1.8649	229.20	204.67	265.88	+ 11.99	- 13.80
21 Pulse Masoor	0.2712	151.79	147.84	146.82	+ 2.67	+ 3.39
22 Pulse Moong	0.2336	219.09	218.26	238.26	+ 0.38	- 8.05
23 Pulse Mash (Washed)	0.2098	186.56	186.25	204.12	+ 0.17	- 8.60
24 Pulse Gram	0.2361	191.83	202.23	243.09	- 5.14	- 21.09
25 Gram Whole	0.1616	195.02	201.43	232.76	- 3.18	- 16.21
26 Beans	0.0269	217.45	218.55	198.78	- 0.50	+ 9.39
27 Potatoes	0.4774	141.92	131.30	162.26	+ 8.09	- 12.54
28 Onion	0.5415	279.29	317.39	135.14	- 12.00	+ 106.7
29 Tomatoes	0.4494	145.46	154.84	81.94	- 6.06	+ 77.52
30 Fresh Vegetables	1.6577	214.19	191.46	165.22	+ 11.87	+ 29.64
31 Sugar	1.0445	191.51	191.97	197.07	- 0.24	- 2.82
32 Gur	0.0220	230.64	220.37	216.41	+ 4.66	+ 6.58
33 Honey	0.0446	256.65	256.45	222.38	+ 0.08	+ 15.41
34 SweetMeat	0.2483	208.64	208.42	201.63	+ 0.11	+ 3.48
35 Beverages	1.1990	177.89	176.35	163.72	+ 0.87	+ 8.66
36 Jam, Tomato Ketchup & Pickles	0.2454	184.90	182.85	172.01	+ 1.12	+ 7.49
37 Condiments	0.2656	216.21	215.20	211.56	+ 0.47	+ 2.20
38 Spices	0.5441	220.03	221.37	272.62	- 0.61	- 19.29
39 Tea	0.8377	245.66	241.26	208.98	+ 1.82	+ 17.55
Alcoholic Beverages, Tobacco	1.4135	191.19	191.16	169.22	+ 0.02	+ 12.98
40 Cigarettes	1.3906	191.31	191.31	169.08	+ 0.00	+ 13.15
41 Betel Leaves & Nuts	0.0229	183.85	182.06	177.91	+ 0.98	+ 3.34
Clothing & Footwear	7.5708	183.74	182.25	163.22	+ 0.82	+ 12.57
42 Cotton Cloth	1.7286	174.94	172.40	152.16	+ 1.47	+ 14.97
43 Woolen Cloth	0.8759	205.17	203.59	183.68	+ 0.78	+ 11.70
44 Readymade Garments	0.9739	181.43	179.98	160.68	+ 0.81	+ 12.91
45 Woolen Readymade Garments	0.3964	192.45	192.45	161.01	+ 0.00	+ 19.53
46 Hosiery	0.5094	193.46	192.69	171.86	+ 0.40	+ 12.57
47 Dopatta	0.4412	202.98	201.18	173.73	+ 0.89	+ 16.84
48 Cleaning and Laundry	0.2110	206.24	202.08	177.51	+ 2.06	+ 16.19
49 Tailoring	0.8840	217.30	215.10	191.94	+ 1.02	+ 13.21
50 Footwear	1.5504	149.78	149.73	142.00	+ 0.03	+ 5.48

+

Annexure A: Consumer Price Index Numbers by Commodity Groups & Commodities (2007-2008=100)

Item and Specification	Weight	Index Numbers			% Change in May 2013 over			
		May 13	Apr 13	May 12	Apr 2013	May 2012		
<i>Housing, Water, Elec., Gas, Other</i>	29.4149	154.54	154.54	153.27	+	0.00	+	0.83
51 House Rent	21.8149	144.57	144.57	135.02	+	0.00	+	7.07
52 Construction Input Items	0.5623	209.12	208.77	194.21	+	0.17	+	7.68
53 Construction Wage Rates	0.3331	179.47	178.65	163.21	+	0.46	+	9.96
54 Water Supply	0.4971	139.65	138.79	133.23	+	0.62	+	4.82
55 Electricity	4.3985	196.37	196.37	196.37	+	0.00	+	0.00
56 Gas	1.5756	142.58	142.58	264.42	+	0.00	-	46.08
57 Kerosene Oil	0.0057	266.68	273.79	267.60	-	2.60	-	0.34
58 Firewood Whole	0.2277	242.88	247.13	225.28	-	1.72	+	7.81
<i>Furnished H. Hold Equip. & Hous</i>	4.2082	184.71	183.59	171.52	+	0.61	+	7.69
59 Furniture	0.3315	174.07	174.01	161.27	+	0.03	+	7.94
60 Household Textiles	0.6489	179.92	178.84	167.77	+	0.60	+	7.24
61 Household Equipment	0.5936	161.74	161.13	153.84	+	0.38	+	5.14
62 Utensils	0.3212	184.02	182.00	166.02	+	1.11	+	10.84
63 Plastic Products	0.2547	180.43	179.07	171.46	+	0.76	+	5.23
64 Washing Soaps & Detergents	0.7893	201.05	199.93	187.61	+	0.56	+	7.16
65 Sewing Needle & Dr Cell	0.1496	163.49	153.11	145.24	+	6.78	+	12.57
66 Household Servant	1.0432	195.10	195.10	179.61	+	0.00	+	8.62
67 Marriage Hall Charges	0.0762	197.82	195.33	183.23	+	1.27	+	7.96
<i>Health</i>	2.1868	160.24	159.34	144.07	+	0.56	+	11.22
68 Drugs & Medicines	1.2667	140.91	140.48	128.29	+	0.31	+	9.84
69 Medical Equipments	0.0080	205.49	203.09	183.13	+	1.18	+	12.21
70 Doctor (MBBS) Clinic Fee	0.5904	201.10	199.07	175.66	+	1.02	+	14.48
71 Medical Tests	0.3217	160.23	159.58	147.23	+	0.41	+	8.83
<i>Transport</i>	7.2023	185.52	187.70	185.93	-	1.16	-	0.22
72 Motor Vehicles	0.6630	156.00	155.55	145.44	+	0.29	+	7.26
73 Motor Vehicle Accessories	0.2439	213.55	213.27	200.36	+	0.13	+	6.58
74 Motor Fuel	3.0269	175.32	181.16	193.20	-	3.22	-	9.25
75 Mechanical Service	0.4552	188.19	187.08	176.50	+	0.59	+	6.62
76 Motor Vehicle Tax	0.1099	153.74	153.74	152.02	+	0.00	+	1.13
77 Transport Services	2.7034	202.50	202.08	189.38	+	0.21	+	6.93
<i>Communication</i>	3.2198	128.71	128.64	122.38	+	0.05	+	5.17
78 Postal Services	0.0662	175.16	174.59	168.66	+	0.33	+	3.85
79 Communication & Apparatus	3.1536	127.73	127.67	121.41	+	0.05	+	5.21
<i>Recreation & Culture</i>	2.0227	176.58	175.62	163.95	+	0.55	+	7.70
80 Recreation & Culture	0.8634	122.42	122.39	121.05	+	0.02	+	1.13
81 Text Books	0.5706	256.86	254.82	229.88	+	0.80	+	11.74
82 Newspapers	0.1934	170.49	170.49	149.97	+	0.00	+	13.68
83 Stationery	0.3953	181.96	180.09	169.32	+	1.04	+	7.47
<i>Education</i>	3.9431	162.17	161.66	151.31	+	0.32	+	7.18
84 Education	3.9431	162.17	161.66	151.31	+	0.32	+	7.18
<i>Restaurants & Hotels</i>	1.2286	209.95	208.62	193.79	+	0.64	+	8.34
85 Readymade Food	1.2286	209.95	208.62	193.79	+	0.64	+	8.34
<i>Miscellaneous Goods & Service</i>	2.7550	202.61	202.51	188.15	+	0.05	+	7.69
86 Personal Care	1.4935	185.67	183.31	171.42	+	1.29	+	8.31
87 Cosmetics	0.3853	152.60	151.21	146.40	+	0.92	+	4.23
88 Blades	0.0322	174.81	174.81	169.53	+	0.00	+	3.11
89 Personal Equipments	0.8440	256.47	260.98	237.54	-	1.73	+	7.97

Annexure B: Wholesale Price Indices by Major Groups & Commodities (2007-2008=100)

Item and Specification	Weight	Index Numbers			% Change in May 2013 over			
		May 13	Apr 13	May 12	Apr 2013	May 2012		
General	100.0000	197.23	198.09	189.46	-	0.43	+	4.10
Agriculture Forestry & Fisher	25.7674	204.69	205.04	185.78	-	0.17	+	10.18
001 Wheat	0.6297	191.19	197.38	163.65	-	3.14	+	16.83
002 Maize	0.6764	188.15	184.91	168.27	+	1.75	+	11.81
003 Rice	2.4413	172.17	171.91	154.82	+	0.15	+	11.21
004 Sorghum/Jowar	0.0214	243.92	223.78	218.11	+	9.00	+	11.83
005 Millet/Bajra	0.0374	183.84	174.63	163.10	+	5.27	+	12.72
006 Vegetables	1.2441	264.84	240.68	172.46	+	10.04	+	53.57
007 Fresh Fruits	1.5144	211.71	209.37	272.26	+	1.12	-	22.24
008 Dry Fruits	0.2478	192.74	188.91	172.32	+	2.03	+	11.85
009 Cotton Seeds	1.1511	167.16	170.47	173.84	-	1.94	-	3.84
010 Other Oil Seeds	0.0722	171.25	168.04	171.79	+	1.91	-	0.31
011 Edible Roots/Potatoes	0.2540	135.38	120.83	150.79	+	12.04	-	10.22
012 Stimulant and Spice Crops	0.1634	197.49	193.64	165.35	+	1.99	+	19.44
013 Pulses	0.4901	186.89	190.02	228.41	-	1.65	-	18.18
014 Sugar Crops	1.0725	267.92	267.92	267.92	+	0.00	+	0.00
015 Fibre Crops	5.3169	205.61	219.37	170.95	-	6.27	+	20.27
016 Unmanufactured Tobacco	0.0742	176.41	175.97	166.81	+	0.25	+	5.76
017 Poultry	0.5633	176.50	167.35	177.51	+	5.47	-	0.57
018 Raw Milk from Bovine Animals	7.0279	215.36	212.51	197.20	+	1.34	+	9.21
019 Eggs	0.5034	153.52	163.42	166.54	-	6.06	-	7.82
020 Raw Animal Materials/Wool	0.0351	146.46	139.39	136.50	+	5.07	+	7.30
021 Hides and Fur Skins, Raw	0.4834	140.56	141.22	138.05	-	0.47	+	1.82
022 Fuel Wood in Logs	0.0179	228.51	228.51	203.06	+	0.00	+	12.53
023 Fish Live Fresh or Chilled	1.7295	215.28	209.12	155.33	+	2.95	+	38.60
Ores/Minerals, Elec., Gas & W	12.0389	213.53	213.96	214.79	-	0.20	-	0.59
024 Coal not Agglomerated	0.7508	223.53	223.53	188.24	+	0.00	+	18.75
025 Natural Gas Liquified	5.7385	200.30	201.27	207.95	-	0.48	-	3.68
026 Salt and Pure Sodium Chloride	0.0584	203.88	195.37	165.87	+	4.36	+	22.92
027 Electrical Energy	5.4912	226.10	226.10	226.10	+	0.00	+	0.00
Food, Beverages, Tobacco, Textil	31.1122	191.52	191.67	179.06	-	0.08	+	6.96
Food Products, Beverages &	20.0718	194.18	193.47	181.46	+	0.37	+	7.01
028 Meat of Animals	3.4559	232.03	231.85	224.02	+	0.08	+	3.58
029 Vegetables and Fruit Juice	0.0058	189.97	189.33	178.36	+	0.34	+	6.51
030 Dried Fruits and Nuts	0.1733	221.30	222.72	198.46	-	0.64	+	11.51
031 Fruit Juices	0.3880	162.75	159.33	158.18	+	2.15	+	2.89
032 Vegetable Oils Refined	1.9242	159.34	159.96	156.41	-	0.39	+	1.87
033 Vegetable Ghee	1.5632	141.08	140.80	145.16	+	0.20	-	2.81
034 Oil Cakes	0.9611	169.06	164.12	139.41	+	3.01	+	21.27
035 Processed Liquid Milk	4.4437	208.43	208.43	191.19	+	0.00	+	9.02
036 Milk and Cream in Solid Form	0.0316	171.72	171.40	167.14	+	0.19	+	2.74
037 Ice Cream	0.0047	176.81	173.49	161.68	+	1.91	+	9.36
038 Dairy Products N.E.C	0.0117	212.62	211.73	198.75	+	0.42	+	6.98
039 Wheat Flour	2.3034	179.64	178.37	153.57	+	0.71	+	16.98
040 Other Cereal Flour	0.0604	170.46	173.25	214.25	-	1.61	-	20.44
041 Sugar Refined	1.7975	204.62	201.52	200.47	+	1.54	+	2.07
042 Chocolate	0.0139	99.19	99.19	100.26	+	0.00	-	1.07
043 Sugar Confectionary	0.0738	102.28	102.28	100.40	+	0.00	+	1.87
044 Coffee and Tea	0.7303	219.00	217.19	196.69	+	0.83	+	11.34
045 Spices	0.1449	238.45	251.26	303.53	-	5.10	-	21.44
046 Other Food Products	0.0336	314.63	316.35	318.54	-	0.54	-	1.23
047 Mineral Water	0.0207	171.58	170.88	165.88	+	0.41	+	3.44
048 Beverages	0.6303	139.24	137.86	135.21	+	1.00	+	2.98
049 Tobacco Products	1.2998	208.80	208.80	175.85	+	0.00	+	18.74
Textiles & Apparels	10.3289	190.09	193.04	178.57	-	1.53	+	6.45
050 Cotton Yarn	5.2491	209.33	216.90	200.04	-	3.49	+	4.64
051 Nylon Yarn	0.1719	189.60	187.63	183.81	+	1.05	+	3.15
052 Blended Yarn	0.1689	198.67	199.68	187.07	-	0.51	+	6.20
053 Woven Fabrics	0.0128	208.98	208.98	171.55	+	0.00	+	21.82
054 Cotton Fabrics	0.6343	182.84	178.26	175.89	+	2.57	+	3.95
055 Other Fabrics	1.1016	172.31	169.83	165.23	+	1.46	+	4.28
056 Silk and Reyon Fabrics	0.7350	157.86	156.87	141.30	+	0.63	+	11.72

Annexure B: Wholesale Price Indices by Major Groups & Commodities (2007-2008=100)

Item and Specification	Weight	Index Numbers			% Change in May 2013 over	
		May 13	Apr 13	May 12	Apr 2013	May 2012
057 Towels	0.1235	210.01	210.01	189.19	+ 0.00	+ 11.00
058 Blankets	0.0029	185.21	185.21	161.28	+ 0.00	+ 14.84
059 Bed Sheets	0.0913	212.73	212.73	175.92	+ 0.00	+ 20.92
060 Quilts	0.0019	153.32	153.32	147.05	+ 0.00	+ 4.26
061 Woolen Carpets	0.0383	106.55	106.55	104.76	+ 0.00	+ 1.71
062 Synthetic Carpets	0.0566	114.41	114.41	144.07	+ 0.00	- 20.59
063 Hosiery Products	0.8832	185.14	185.14	163.84	+ 0.00	+ 13.00
064 Readymade Garments	1.0576	145.39	142.83	127.25	+ 1.79	+ 14.26
Leather Products	0.7115	137.06	120.99	118.56	+ 13.28	+ 15.60
065 Leather without Hair	0.2973	115.62	109.83	109.83	+ 5.27	+ 5.27
066 Other Leather N.E.C	0.2567	160.40	122.57	122.57	+ 30.86	+ 30.86
067 Footwears	0.1575	139.49	139.49	128.50	+ 0.00	+ 8.55
Other Transportable Goods	22.3659	201.98	205.35	207.39	- 1.64	- 2.61
068 Timber	0.0165	153.36	152.98	144.35	+ 0.25	+ 6.24
069 Printing Paper	0.4279	169.17	168.66	141.99	+ 0.30	+ 19.14
070 Hard Board	0.1579	187.50	187.50	168.75	+ 0.00	+ 11.11
071 Coke	0.2797	163.45	163.45	163.45	+ 0.00	+ 0.00
072 Motor Spirit	1.5336	164.86	172.82	174.61	- 4.61	- 5.58
073 Diesel Oil	5.2664	249.51	257.92	263.04	- 3.26	- 5.14
074 Kerosine Oil	0.2151	251.08	262.00	266.52	- 4.17	- 5.79
075 Furnace Oil	3.2664	169.52	174.79	210.94	- 3.02	- 19.64
076 Mobil Oil	0.7114	186.04	187.49	181.11	- 0.77	+ 2.72
077 Chemicals	1.7720	159.30	160.14	145.79	- 0.52	+ 9.27
078 Dyeing Material	0.1539	107.23	107.23	104.26	+ 0.00	+ 2.85
079 Fertilizers	2.8657	260.13	261.31	268.05	- 0.45	- 2.95
080 Pesticides	0.2763	199.65	197.49	165.53	+ 1.09	+ 20.61
081 Insecticides	0.1276	123.02	123.20	121.64	- 0.15	+ 1.13
082 Paints and Varnishes	0.1916	241.85	241.08	211.83	+ 0.32	+ 14.17
083 Medicines	1.1428	139.19	139.66	122.49	- 0.34	+ 13.63
084 Soaps and Detergents	0.8168	174.25	170.95	156.58	+ 1.93	+ 11.28
085 Auto Tyres	0.2703	181.43	181.43	175.62	+ 0.00	+ 3.31
086 Plastic Products	0.4550	196.65	196.56	185.12	+ 0.05	+ 6.23
087 Glass sheets	0.2089	201.02	201.02	172.43	+ 0.00	+ 16.58
088 Other Glass Articles	0.1635	206.09	199.53	222.06	+ 3.29	- 7.19
089 Ceramics and Sanitary Fixture	0.0244	161.77	161.77	144.28	+ 0.00	+ 12.12
090 Bricks, Blocks and Tiles	0.1566	184.29	180.18	170.86	+ 2.28	+ 7.86
091 Cement	1.8145	189.16	188.24	177.41	+ 0.49	+ 6.62
092 Bed Foam	0.0006	144.33	142.83	131.00	+ 1.05	+ 10.18
093 Matches	0.0505	142.72	142.72	122.82	+ 0.00	+ 16.20
Metal Product, Machinery & Eq	8.7156	160.87	159.93	156.46	+ 0.59	+ 2.82
094 Pig Iron	0.0593	128.97	128.97	128.97	+ 0.00	+ 0.00
095 Steel Bar and Sheets	1.4022	133.53	133.52	136.32	+ 0.01	- 2.05
096 Pipe Fittings	0.0780	148.98	148.98	142.31	+ 0.00	+ 4.69
097 Steel Products	0.3879	166.25	166.25	159.13	+ 0.00	+ 4.47
098 Engines and Motors	0.0046	109.07	109.07	109.07	+ 0.00	+ 0.00
099 Vacuum Pumps	0.0155	115.39	115.39	115.39	+ 0.00	+ 0.00
100 Air Conditioners	0.0049	179.78	176.43	170.33	+ 1.90	+ 5.55
101 Cultivators	0.0551	189.23	189.23	184.66	+ 0.00	+ 2.47
102 Chuff Cutter	0.1293	144.94	144.94	134.28	+ 0.00	+ 7.94
103 Tractors	0.0028	161.96	161.96	172.36	+ 0.00	- 6.03
104 Lathe Machines	0.0525	147.68	147.68	147.68	+ 0.00	+ 0.00
105 Concrete Mixture	0.0107	138.83	138.83	138.83	+ 0.00	+ 0.00
106 Fridge, WashM, SewM, Fans, Iron	1.1645	174.07	171.52	164.93	+ 1.49	+ 5.54
107 Electric Wires	0.0912	160.12	159.57	165.49	+ 0.34	- 3.24
108 Lighting Equipments	1.4431	147.94	148.26	145.49	- 0.22	+ 1.68
109 Radio and Television	0.1843	126.49	126.49	132.73	+ 0.00	- 4.70
110 Motor Vehicles	0.0244	173.75	173.75	160.28	+ 0.00	+ 8.40
111 Motorcycles	0.2570	124.56	125.07	124.02	- 0.41	+ 0.44
112 Bicycles	3.3483	178.81	177.09	171.52	+ 0.97	+ 4.25