



Monthly Review on Price Indices



April, 2013
(Base 2007-08)

Government of Pakistan
Statistics Division
Pakistan Bureau of Statistics
Islamabad

Inflation in Brief

1. CPI inflation, General, increased by 5.8% on year-on-year basis in April 2013 as compared to 6.6% in the previous month and 11.3% in April 2012. On month-on-month basis, it increased by 1.1% in April 2013 as compared to 0.4% in the previous month and an increase of 1.8% in April 2012.
2. Core inflation measured by non-food non-energy CPI (Core NFNE) increased by 8.7% in April 2013 as compared to 9.0% in March 2013 (YoY) and by 10.8% in April 2012. Core NFNE inflation on MoM basis increased by 1.1% in April 2013 as compared to 0.4% a month earlier and 1.4% in April 2012.
3. Core inflation, measured by 20% weighted trimmed mean CPI (Core Trimmed) increased by 7.6% in April 2013 and by 8.4% in March 2013 (YoY) which increased by 11.0% in April 2012. Core Trimmed inflation has increased by 0.7% on MoM basis in April 2013 as compared to 0.2% in March 2013 which increased by 1.3% in April 2012.
4. SPI inflation on YoY basis increased by 6.6% in April 2013 as compared with 8.7% a month earlier and 7.5% in April 2012. On MoM basis, it decreased by 0.3% in April 2013 as compared to an increase of 0.8% a month earlier and 1.7% in April 2012.
5. WPI inflation on YoY basis increased to 6.8% in April 2013 compared with 7.9% a month earlier and 3.8% in April 2012. WPI inflation on MoM basis increased by 0.8% in April 2013 as compared to an increase of 0.3% a month earlier and increased by 1.8% in April 2012.
6. Figures 1 and 2 show graphically the data of Table 1. Table 1.1 shows "Period Average" and "YoY" percent changes in indices of three years.

Table 1: Inflation (%) (Base 2007-08)

Period	CPI						Core Inflation				SPI**		WPI	
	General		Food		Non-food		NFNE*		Trimmed		YoY	MoM	YoY	MoM
	YoY	MoM	YoY	MoM	YoY	MoM	YoY	MoM	YoY	MoM				
Mar 12	10.8	1.2	9.8	1.5	11.5	0.9	10.8	1.0	10.5	0.8	6.1	1.5	4.5	0.7
Apr 12	11.3	1.8	10.7	2.2	11.6	1.6	10.8	1.4	11.0	1.3	7.5	1.7	3.8	1.8
May 12	12.3	1.1	11.3	0.2	13.1	1.9	11.1	0.8	11.7	0.5	8.1	-0.1	7.1	2.1
Jun 12	11.3	0.0	10.3	-0.2	12.0	0.2	11.4	0.7	11.1	0.5	9.7	1.4	6.4	0.0
Jul 12	9.6	-0.2	9.1	1.8	10.0	-1.7	11.3	1.0	10.7	0.7	7.7	0.5	7.2	0.4
Aug 12	9.1	0.9	8.5	0.9	9.4	0.9	10.8	0.3	10.6	0.4	8.2	1.3	7.7	1.0
Sep 12	8.8	0.8	7.6	0.7	9.7	0.9	10.4	0.4	10.4	0.5	8.0	1.2	7.8	0.3
Oct 12	7.7	0.4	5.8	-0.1	9.1	0.7	10.1	1.2	9.7	0.7	6.7	-0.4	7.5	0.1
Nov 12	6.9	-0.4	5.3	-0.3	8.1	-0.4	9.7	0.2	8.8	0.2	6.0	0.0	7.7	-0.4
Dec 12	7.9	0.2	7.7	0.0	8.1	0.4	9.8	0.5	9.2	0.3	8.2	0.0	9.6	0.4
Jan 13	8.1	1.7	8.1	1.9	8.1	1.5	9.9	1.2	9.9	1.0	9.2	1.9	8.6	1.2
Feb 13	7.4	-0.3	7.4	-1.3	7.4	0.3	9.6	0.4	9.2	0.2	9.4	0.1	8.3	0.3
Mar 13	6.6	0.4	6.3	0.5	6.7	0.3	9.0	0.4	8.4	0.2	8.7	0.8	7.9	0.3
Apr 13	5.8	1.1	5.5	1.4	6.0	0.9	8.7	1.1	7.6	0.7	6.6	-0.3	6.8	0.8

*NFNE is non-food non-energy,

** SPI for quintile 1

Table 1.1 : Period Average and YoY % Changes of Indices (Base 2007-08)

Index	Averages July-April % Changes			April over April % Changes		
	2012-13	2011-12	2010-11	2012-13	2011-12	2010-11
CPI	7.75	10.84	13.81	5.80	11.27	12.54
SPI	7.86	6.72	17.24	6.56	7.53	14.21
WPI	7.91	11.24	20.96	6.80	3.80	24.88

Figure 1: CPI Inflation YoY, Special Indices

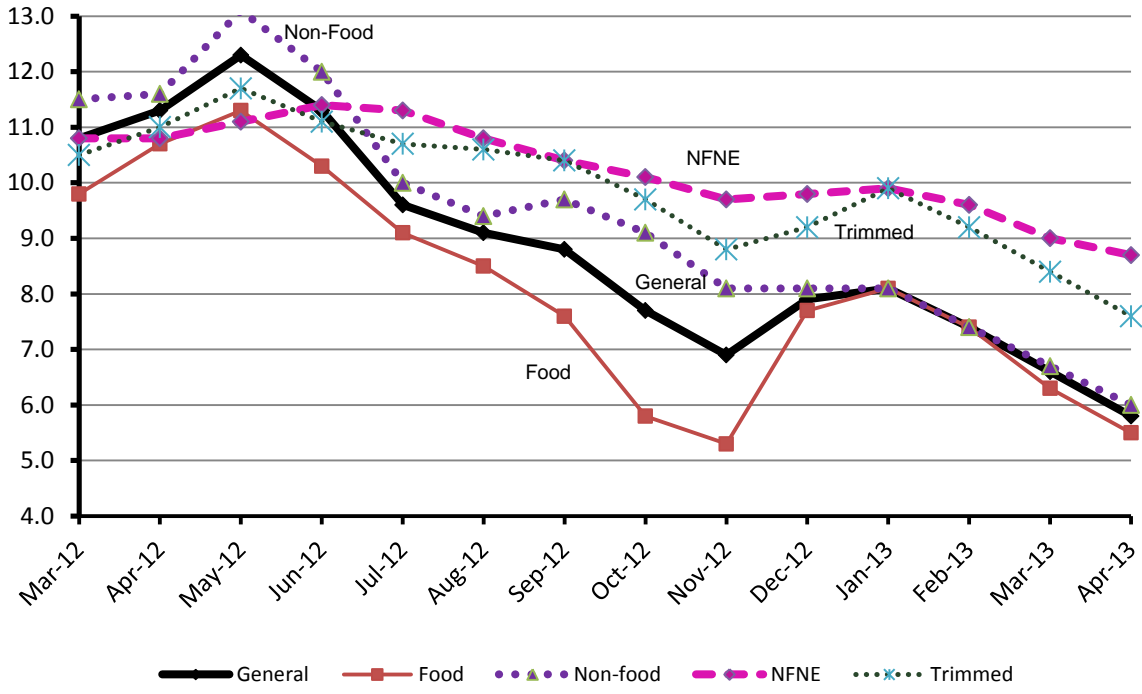
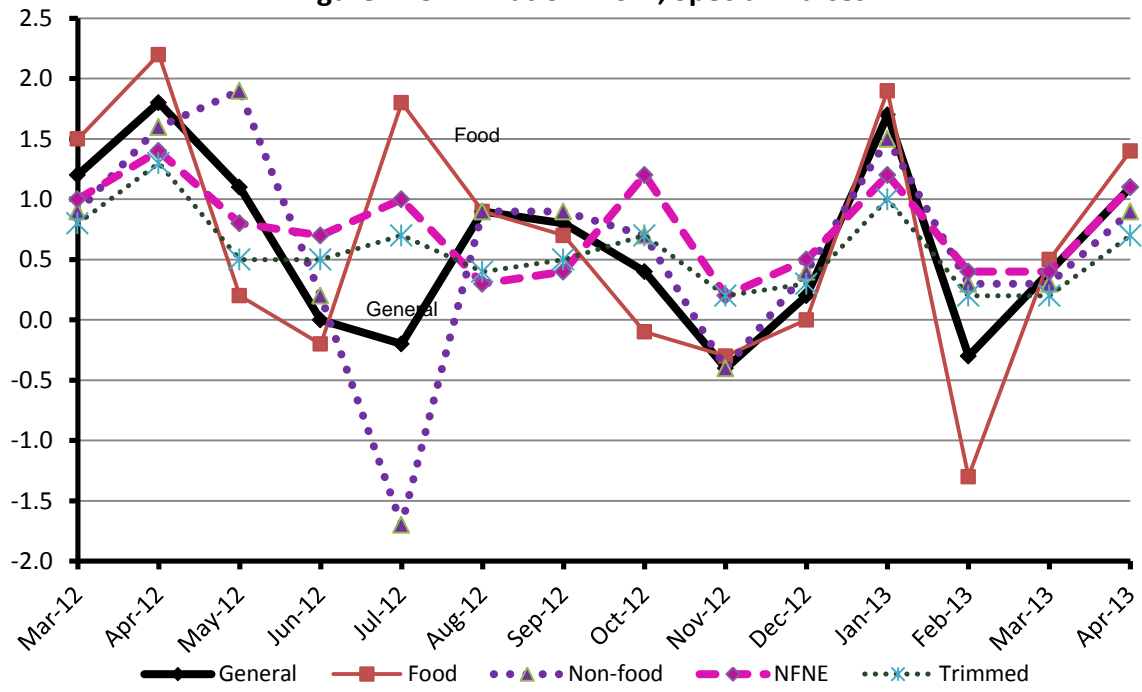


Figure 2: CPI Inflation MoM, Special Indices



I. Consumer Price Index (CPI)

The Consumer Price Index of April, 2013 has increased by 1.09% over March, 2013 and increased by 5.80% over corresponding month of last year.

Table 2 : Consumer Price Index by Group of Commodities and Services (Base 2007-08)

No	Group	Group Weight (%)	Indices			% Change Apr 2013 over		Impact (In % points) Apr 2013 over	
			Apr 2013	Mar 2013	Apr 2012	Mar 2013	Apr 2012	Mar 2013	Apr 2012
	General	100.00	177.74	175.82	168.00	1.09	5.80	1.09	5.80
1.	Food & Non-alcoholic Bev.	34.83	197.62	194.76	188.00	1.47	5.12	0.57	1.99
	<i>Non-perishable Food Items</i>	<i>29.84</i>	<i>197.04</i>	<i>197.57</i>	<i>186.60</i>	<i>-0.27</i>	<i>5.59</i>	<i>-0.09</i>	<i>1.85</i>
	<i>Perishable Food Items</i>	<i>4.99</i>	<i>201.07</i>	<i>177.97</i>	<i>196.36</i>	<i>12.98</i>	<i>2.40</i>	<i>0.66</i>	<i>0.14</i>
2.	Alcoholic Bev. & Tobacco	1.41	191.16	191.16	168.74	0.00	13.29	0.00	0.19
3.	Clothing & Footwear	7.57	182.25	179.42	161.68	1.58	12.72	0.12	0.93
4.	Housing, Water, Electricity, Gas & Fuels	29.41	154.54	152.91	149.07	1.07	3.67	0.27	0.96
5.	Furnishing & Household Equipment Maintenance	4.21	183.59	182.47	168.78	0.61	8.77	0.03	0.37
6.	Health	2.19	159.34	158.49	141.74	0.54	12.42	0.01	0.23
7.	Transport	7.20	187.70	189.11	185.94	-0.75	0.95	-0.06	0.08
8.	Communication	3.22	128.64	128.63	122.36	0.01	5.13	0.00	0.12
9.	Recreation & Culture	2.03	175.62	170.63	146.51	2.92	19.87	0.06	0.35
10.	Education	3.94	161.66	157.68	151.36	2.52	6.80	0.09	0.24
11.	Restaurants & Hotels	1.23	208.62	208.05	192.76	0.27	8.23	0.00	0.12
12.	Miscellaneous	2.76	202.51	202.64	188.70	-0.06	7.32	0.00	0.23

Main contributors to month-on-month and year-on-year percentage changes are given below and detail is given in Annexure A.

1. **Month-on-month** Top few commodities which varied from previous month i.e. March 2013 are given below:-

Food Items Increased: Onions (40.12%), Fresh Vegetables (20.97%), Fresh Fruits (12.46%), Chicken (4.76%), Tea (2.53%), Fish (1.73%), Sugar (1.70%), Pulse Masoor (1.37%), Beverages (1.29%), Milk Powder (0.93%), Meat (0.85%) and Gur (0.72%).

Decreased: Tomatoes (27.11%), Eggs (13.69%), Pulse Gram (6.91%), Potatoes (6.26%), Wheat (5.50%), Gram Whole (5.08%), Besan (5.04%), Wheat Flour (2.91%), Pulse Mash (2.35%), Spices (2.31%), Mustard Oil (1.69%), Pulse Moong (1.52%) and Wheat Product (1.29%).

Non-food Items Increased: Text Books (6.89%), Cotton Cloth (4.38%), Education (2.52%), Dopatta (1.94%), Hosiery (1.68%), House Rent (1.48%), Household Equipments (1.25%), Utensils (1.23%), Construction Wage Rates (1.17%), Woolen Cloth (1.14%), Doctor (MBBS) Clinic Fee (1.06%), Construction Input items (0.94%) and Stationery (0.89%).

Decreased: Transport Services (1.20%), Kerosene Oil (1.18%), Motor Fuel (0.76%), Personal Equipments (0.53%) and Woolen Readymade Garments (0.06%).

2. **Year-on-year:** Top few commodities which varied from previous year i.e. April 2012 are given below:-

Food Items Increased: Onions (116.49%), Honey (17.25%), Tea (15.67%), Wheat (15.64%), Wheat Flour (15.30%), Rice (15.25%), Wheat Products (13.92%), Cigarettes (13.45%), Beans (12.15%), Milk Powder (11.81%), Cereals (10.84%), Eggs (10.07%) and Milk Fresh (9.69%).

Decreased: Spices (18.91%), Tomatoes (17.55%), Chicken (17.33%), Potatoes (14.95%), Fresh Fruits (11.79%), Gram Whole (10.63%), Pulse Mash (8.87%), Pulse Moong (8.58%), Pulse Gram (6.59%), Sugar (4.76%), Vegetable Ghee (4.31%) and Besan (0.46%).

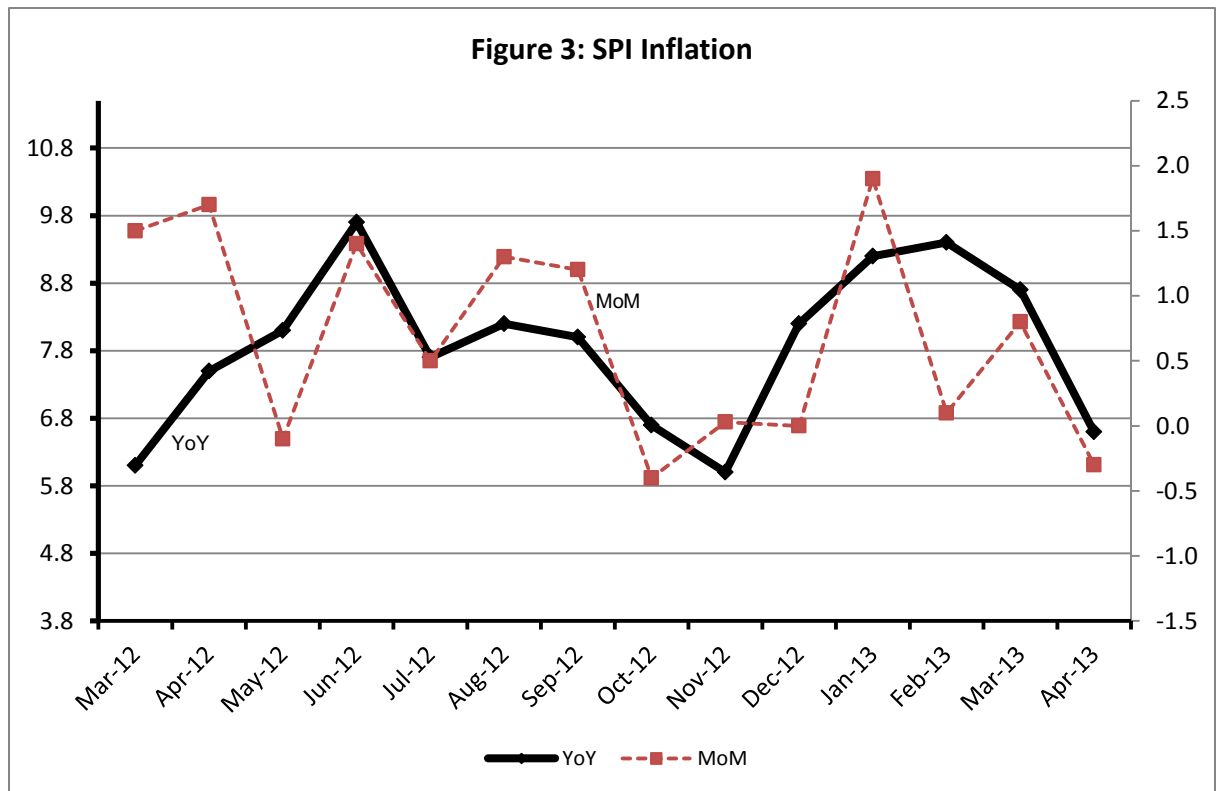
Non-food Items Increased: Text Books (48.60%), Woolen Readymade Garments (19.88%), Dopatta (17.88%), Electricity (16.39%), Doctor (MBBS) Clinic Fee (16.01%), Cleaning & Laundry (15.57%), Cotton Cloth (14.26%), Tailoring (13.96%) and Hosiery (13.91%).

Decreased: Gas (46.08%).

III. Sensitive Price Indicator

Quintile-wise percentage changes YoY and MoM are given below in Table 3. The series from March 2012 to April 2013 is also graphed below in Figure 3.

Table 3 : Sensitive Price Indicator (Base 2007-08)					
Quintiles	Indices			% Change Apr 2013 over	
	Apr 2013	Mar 2013	Apr 2012	Mar 2013	Apr 2012
1	186.44	186.98	174.97	-0.29	6.56
2	192.67	192.97	178.27	-0.16	8.08
3	191.35	191.50	178.05	-0.08	7.47
4	192.76	192.74	186.59	0.01	3.31
5	193.28	193.02	192.12	0.13	0.60
Combined	192.02	192.01	184.03	0.01	4.34



IV. Wholesale Price Index

The Wholesale Price Index for April 2013 increased by 0.77% over March 2013. It increased by 6.80% over the corresponding month of the last year. YoY and MoM movements, from March 2012 to April 2013 are also graphed below in Figure 4.

Table 4 : Wholesale Price Index by Group of Commodities (Base 2007-08)

No.	Group	Group Weight (%)	Indices			% Change April 2013 over		Impact (in %age points) Apr 2013 over	
			Apr 2013	Mar 2013	Apr 2012	Mar 2013	Apr 2012	Mar 2013	Apr 2012
	General	100.00	198.09	196.57	185.48	0.77	6.80	0.77	6.80
1.	Agriculture, Forestry & Fishery Products	25.77	205.04	199.84	183.68	2.60	11.63	0.67	2.97
2.	Ores & Minerals, Electricity, Gas & Water	12.04	213.96	214.54	188.10	-0.27	13.75	-0.04	1.68
3.	Food Products, Beverages & Tobacco, Textiles, Apparel & Leather Products	31.11	191.67	190.65	177.32	0.54	8.09	0.16	2.41
i.	Food Products, Bev. & Tobacco	20.07	193.47	193.18	180.69	0.15	7.07	0.03	1.38
ii.	Textiles and Apparel	10.33	193.04	190.53	174.83	1.32	10.42	0.13	1.01
iii.	Leather Products	0.71	120.99	120.99	118.56	0.00	2.05	0.00	0.01
4.	Other Transportable Goods except Metal Products, Machinery & Equipments	22.37	205.35	206.04	208.92	-0.33	-1.71	-0.08	-0.43
5.	Metal Products, Machinery & Equipments	8.72	159.93	158.87	156.18	0.67	2.40	0.05	0.18

Main contributors to month-on-month and year-on-year percentage changes are given below and detail is given in Annexure B.

1. **Month-on-month** Top few commodities which varied from previous month i.e. March 2013 are given below:-

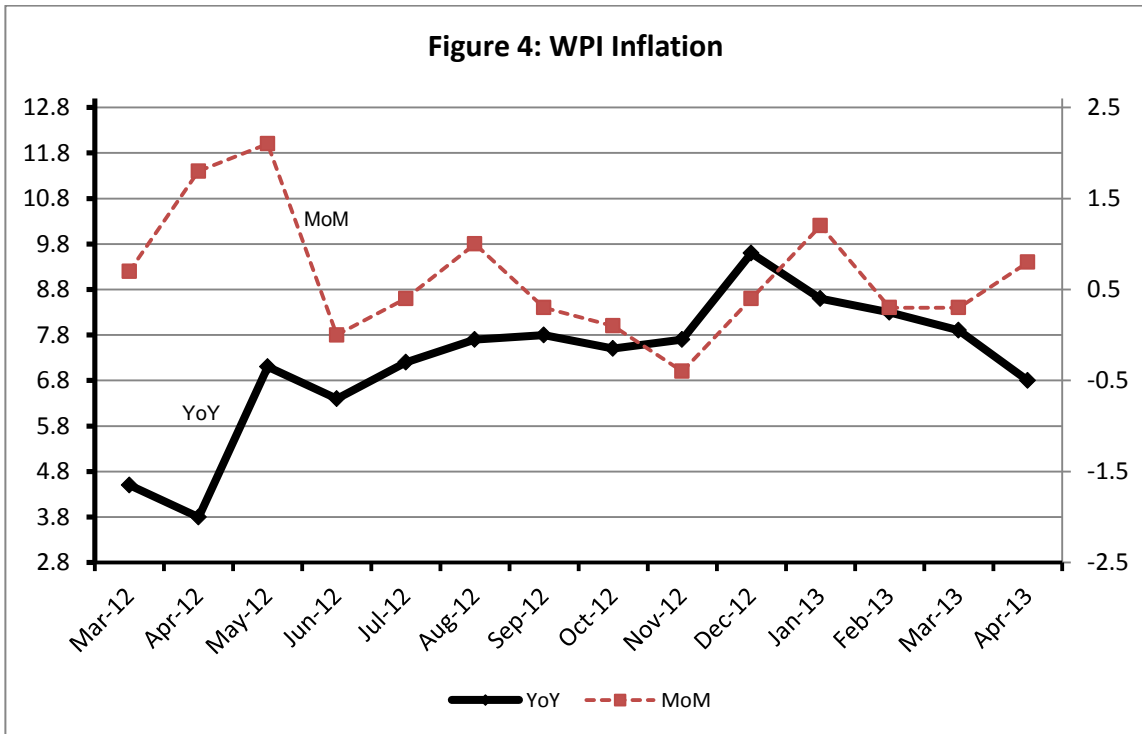
Increased: Vegetables (40.83%), Poultry (9.04%), Matches (6.91%), Fish (6.02%), Pipe fittings (5.13%), Salt and Pure Sodium Chloride (4.31%), Glass sheets (4.30%), Fuel Wood in Logs (3.77%), Towels (3.42%) and Readymade Garments (3.36%).

Decreased: Eggs (16.35%), Spices (5.78%), Other cereal Flour (5.47%), Wheat (4.84%), Edible roots/potatoes (3.66%), other Oil Seeds (2.69%), Wheat Flour (2.12%), Furnace oil (1.91%), Pulses (1.87%) and Diesel Oil (1.32%).

2. **Year-on-year** Top few commodities which varied from previous year i.e. April, 2012 are given below:-

Increased: Electrical Energy (36.10%), Fish (35.34%), Fibre crops (26.62%), Printing Paper (26.54%), Coal not Agglomerated (23.91%), Bed sheets (22.17%), Woven Fabrics (21.82%), Oil cakes (21.49%), Tobacco Products (19.36%) and Pesticides (19.31%).

Decreased: Furnace oil (20.82%), Synthetic Carpets (20.59%), Poultry (18.93%), Spices (17.21%), Pulses (15.79%), Edible Roots/Potatoes (10.46%), Other cereal flour (9.49%), other Glass Articles (7.84%), Tractors (6.03%) and Radio and Television (4.7%).



Annexure A: Consumer Price Index Numbers by Commodity Groups & Commodities (2007-2008=100)

Item and Specification	Weight	Index Numbers			% Change in Apr 2013 over	
		Apr 13	Mar 13	Apr 12	Mar 2013	Apr 2012
General	100.0000	177.74	175.82	168.00	+ 1.09	+ 5.80
Food & Non-alcoholic Beverage	34.8343	197.62	194.76	188.00	+ 1.47	+ 5.12
01 Wheat	0.3477	189.08	200.08	163.51	- 5.50	+ 15.64
02 Wheat Flour	4.1648	193.86	199.68	168.13	- 2.91	+ 15.30
03 Wheat Product	0.0959	187.22	189.66	164.35	- 1.29	+ 13.92
04 Besan	0.1500	213.94	225.29	214.92	- 5.04	- 0.46
05 Rice	1.5821	182.84	182.08	158.65	+ 0.42	+ 15.25
06 Cereals	0.1563	213.49	212.48	192.61	+ 0.48	+ 10.84
07 Bakery & Confectionary	1.1550	182.03	180.71	166.14	+ 0.73	+ 9.56
08 Nimco	0.4574	202.35	201.85	189.59	+ 0.25	+ 6.73
09 Meat	2.4303	221.88	220.01	212.52	+ 0.85	+ 4.40
10 Chicken	1.3596	167.42	159.82	202.52	+ 4.76	- 17.33
11 Fish	0.2970	202.61	199.17	197.20	+ 1.73	+ 2.74
12 Milk Fresh	6.6800	221.39	220.22	201.84	+ 0.53	+ 9.69
13 Milk Products	0.6338	212.73	211.92	199.07	+ 0.38	+ 6.86
14 Milk Powder	0.1129	188.72	186.98	168.79	+ 0.93	+ 11.81
15 Eggs	0.4555	163.02	188.87	148.11	- 13.69	+ 10.07
16 Mustard Oil	0.0952	159.80	162.55	158.20	- 1.69	+ 1.01
17 Cooking Oil	1.7538	161.31	161.13	153.10	+ 0.11	+ 5.36
18 Vegetable Ghee	2.0714	155.79	157.29	162.81	- 0.95	- 4.31
19 Dry Fruits	0.2543	211.97	213.13	198.12	- 0.54	+ 6.99
20 Fresh Fruits	1.8649	204.67	181.99	232.03	+ 12.46	- 11.79
21 Pulse Masoor	0.2712	147.84	145.84	146.30	+ 1.37	+ 1.05
22 Pulse Moong	0.2336	218.26	221.64	238.74	- 1.52	- 8.58
23 Pulse Mash (Washed)	0.2098	186.25	190.74	204.38	- 2.35	- 8.87
24 Pulse Gram	0.2361	202.23	217.25	216.49	- 6.91	- 6.59
25 Gram Whole	0.1616	201.43	212.21	225.40	- 5.08	- 10.63
26 Beans	0.0269	218.55	217.96	194.88	+ 0.27	+ 12.15
27 Potatoes	0.4889	131.30	140.07	154.38	- 6.26	- 14.95
28 Onion	0.5530	317.39	226.51	146.61	+ 40.12	+ <u>116.4</u>
29 Tomatoes	0.4609	154.84	212.43	187.81	- 27.11	- 17.55
30 Fresh Vegetables	1.6232	191.46	158.27	187.39	+ 20.97	+ 2.17
31 Sugar	1.0445	191.97	188.76	201.57	+ 1.70	- 4.76
32 Gur	0.0220	220.37	218.79	219.16	+ 0.72	+ 0.55
33 Honey	0.0446	256.45	256.26	218.72	+ 0.07	+ 17.25
34 SweetMeat	0.2483	208.42	208.42	200.06	+ 0.00	+ 4.18
35 Beverages	1.1990	176.35	174.11	162.19	+ 1.29	+ 8.73
36 Jam, Tomato Ketchup & Pickles	0.2454	182.85	181.88	171.32	+ 0.53	+ 6.73
37 Condiments	0.2656	215.20	215.06	210.58	+ 0.07	+ 2.19
38 Spices	0.5441	221.37	226.61	272.99	- 2.31	- 18.91
39 Tea	0.8377	241.26	235.31	208.58	+ 2.53	+ 15.67
Alcoholic Beverages, Tobacco	1.4135	191.16	191.16	168.74	+ 0.00	+ 13.29
40 Cigarettes	1.3906	191.31	191.31	168.63	+ 0.00	+ 13.45
41 Betel Leaves & Nuts	0.0229	182.06	182.09	175.77	- 0.02	+ 3.58
Clothing & Footwear	7.5708	182.25	179.42	161.68	+ 1.58	+ 12.72
42 Cotton Cloth	1.7286	172.40	165.16	150.89	+ 4.38	+ 14.26
43 Woolen Cloth	0.8759	203.59	201.30	182.30	+ 1.14	+ 11.68
44 Readymade Garments	0.9739	179.98	178.55	159.03	+ 0.80	+ 13.17
45 Woolen Readymade Garments	0.3964	192.45	192.57	160.53	- 0.06	+ 19.88
46 Hosiery	0.5094	192.69	189.51	169.16	+ 1.68	+ 13.91
47 Dopatta	0.4412	201.18	197.36	170.66	+ 1.94	+ 17.88
48 Cleaning and Laundry	0.2110	202.08	200.53	174.86	+ 0.77	+ 15.57
49 Tailoring	0.8840	215.10	213.30	188.75	+ 0.84	+ 13.96
50 Footwear	1.5504	149.73	149.55	141.80	+ 0.12	+ 5.59

+

Annexure A: Consumer Price Index Numbers by Commodity Groups & Commodities (2007-2008=100)

Item and Specification	Weight	Index Numbers			% Change in Apr 2013 over	
		Apr 13	Mar 13	Apr 12	Mar 2013	Apr 2012
Housing, Water, Elec., Gas, Other	29.4149	154.54	152.91	149.07	+ 1.07	+ 3.67
51 House Rent	21.8149	144.57	142.46	135.02	+ 1.48	+ 7.07
52 Construction Input Items	0.5623	208.77	206.83	192.40	+ 0.94	+ 8.51
53 Construction Wage Rates	0.3331	178.65	176.59	160.84	+ 1.17	+ 11.07
54 Water Supply	0.4971	138.79	138.79	132.90	+ 0.00	+ 4.43
55 Electricity	4.3985	196.37	196.37	168.71	+ 0.00	+ 16.39
56 Gas	1.5756	142.58	142.58	264.42	+ 0.00	- 46.08
57 Kerosene Oil	0.0057	273.79	277.05	266.00	- 1.18	+ 2.93
58 Firewood Whole	0.2277	247.13	246.28	225.67	+ 0.35	+ 9.51
Furnished H. Hold Equip. & Hous	4.2082	183.59	182.47	168.78	+ 0.61	+ 8.77
59 Furniture	0.3315	174.01	173.02	159.39	+ 0.57	+ 9.17
60 Household Textiles	0.6489	178.84	178.21	165.26	+ 0.35	+ 8.22
61 Household Equipment	0.5936	161.13	159.14	152.27	+ 1.25	+ 5.82
62 Utensils	0.3212	182.00	179.78	162.84	+ 1.23	+ 11.77
63 Plastic Products	0.2547	179.07	177.87	169.80	+ 0.67	+ 5.46
64 Washing Soaps & Detergents	0.7893	199.93	198.55	185.11	+ 0.70	+ 8.01
65 Sewing Needle & Dr Cell	0.1496	153.11	152.41	144.16	+ 0.46	+ 6.21
66 Household Servant	1.0432	195.10	194.63	175.17	+ 0.24	+ 11.38
67 Marriage Hall Charges	0.0762	195.33	194.52	181.77	+ 0.42	+ 7.46
Health	2.1868	159.34	158.49	141.74	+ 0.54	+ 12.42
68 Drugs & Medicines	1.2667	140.48	140.18	126.54	+ 0.21	+ 11.02
69 Medical Equipments	0.0080	203.09	201.89	181.03	+ 0.59	+ 12.19
70 Doctor (MBBS) Clinic Fee	0.5904	199.07	196.98	171.60	+ 1.06	+ 16.01
71 Medical Tests	0.3217	159.58	158.83	145.82	+ 0.47	+ 9.44
Transport	7.2023	187.70	189.11	185.94	- 0.75	+ 0.95
72 Motor Vehicles	0.6630	155.55	155.51	144.48	+ 0.03	+ 7.66
73 Motor Vehicle Accessories	0.2439	213.27	212.43	199.88	+ 0.40	+ 6.70
74 Motor Fuel	3.0269	181.16	182.54	194.29	- 0.76	- 6.76
75 Mechanical Service	0.4552	187.08	186.18	175.38	+ 0.48	+ 6.67
76 Motor Vehicle Tax	0.1099	153.74	153.74	152.02	+ 0.00	+ 1.13
77 Transport Services	2.7034	202.08	204.54	188.66	- 1.20	+ 7.11
Communication	3.2198	128.64	128.63	122.36	+ 0.01	+ 5.13
78 Postal Services	0.0662	174.59	174.59	168.53	+ 0.00	+ 3.60
79 Communication & Apparatus	3.1536	127.67	127.66	121.39	+ 0.01	+ 5.17
Recreation & Culture	2.0227	175.62	170.63	146.51	+ 2.92	+ 19.87
80 Recreation & Culture	0.8634	122.39	122.28	120.03	+ 0.09	+ 1.97
81 Text Books	0.5706	254.82	238.40	171.48	+ 6.89	+ 48.60
82 Newspapers	0.1934	170.49	170.49	149.97	+ 0.00	+ 13.68
83 Stationery	0.3953	180.09	178.51	166.61	+ 0.89	+ 8.09
Education	3.9431	161.66	157.68	151.36	+ 2.52	+ 6.80
84 Education	3.9431	161.66	157.68	151.36	+ 2.52	+ 6.80
Restaurants & Hotels	1.2286	208.62	208.05	192.76	+ 0.27	+ 8.23
85 Readymade Food	1.2286	208.62	208.05	192.76	+ 0.27	+ 8.23
Miscellaneous Goods & Service	2.7550	202.51	202.64	188.70	- 0.06	+ 7.32
86 Personal Care	1.4935	183.31	182.97	170.72	+ 0.19	+ 7.37
87 Cosmetics	0.3853	151.21	150.40	146.27	+ 0.54	+ 3.38
88 Blades	0.0322	174.81	174.26	166.64	+ 0.32	+ 4.90
89 Personal Equipments	0.8440	260.98	262.37	240.72	- 0.53	+ 8.42

Annexure B: Wholesale Price Indices by Major Groups & Commodities

(2007-2008=100)

Item and Specification	Weight	Index Numbers			% Change in Apr 2013 over	
		Apr 13	Mar 13	Apr 12	Mar 2013	Apr 2012
General	100.0000	198.09	196.57	185.48	+ 0.77	+ 6.80
Agriculture Forestry & Fisher	25.7674	205.04	199.84	183.68	+ 2.60	+ 11.63
001 Wheat	0.6297	197.38	207.41	168.38	- 4.84	+ 17.22
002 Maize	0.6764	184.91	182.35	163.16	+ 1.40	+ 13.33
003 Rice	2.4413	171.91	167.72	149.83	+ 2.50	+ 14.74
004 Sorghum/Jowar	0.0214	223.78	223.15	215.59	+ 0.28	+ 3.80
005 Millet/Bajra	0.0374	174.63	175.35	157.66	- 0.41	+ 10.76
006 Vegetables	1.2441	240.68	170.90	212.58	+ 40.83	+ 13.22
007 Fresh Fruits	1.5144	209.37	205.38	212.67	+ 1.94	- 1.55
008 Dry Fruits	0.2478	188.91	184.10	174.24	+ 2.61	+ 8.42
009 Cotton Seeds	1.1511	170.47	166.12	174.03	+ 2.62	- 2.05
010 Other Oil Seeds	0.0722	168.04	172.68	167.61	- 2.69	+ 0.26
011 Edible Roots/Potatoes	0.2540	120.83	125.42	134.95	- 3.66	- 10.46
012 Stimulant and Spice Crops	0.1634	193.64	188.95	170.44	+ 2.48	+ 13.61
013 Pulses	0.4901	190.02	193.65	225.64	- 1.87	- 15.79
014 Sugar Crops	1.0725	267.92	267.92	272.71	+ 0.00	- 1.76
015 Fibre Crops	5.3169	219.37	215.82	173.25	+ 1.64	+ 26.62
016 Unmanufactured Tobacco	0.0742	175.97	175.15	166.99	+ 0.47	+ 5.38
017 Poultry	0.5633	167.35	153.47	206.42	+ 9.04	- 18.93
018 Raw Milk from Bovine Animals	7.0279	212.51	212.51	194.99	+ 0.00	+ 8.99
019 Eggs	0.5034	163.42	195.37	139.52	- 16.35	+ 17.13
020 Raw Animal Materials/Wool	0.0351	139.39	137.58	136.50	+ 1.32	+ 2.12
021 Hides and Fur Skins, Raw	0.4834	141.22	140.54	138.42	+ 0.48	+ 2.02
022 Fuel Wood in Logs	0.0179	228.51	220.21	201.97	+ 3.77	+ 13.14
023 Fish Live Fresh or Chilled	1.7295	209.12	197.25	154.52	+ 6.02	+ 35.34
Ores/Minerals, Elec., Gas & W	12.0389	213.96	214.54	188.10	- 0.27	+ 13.75
024 Coal not Agglomerated	0.7508	223.53	223.53	180.39	+ 0.00	+ 23.91
025 Natural Gas Liquified	5.7385	201.27	202.57	210.36	- 0.64	- 4.32
026 Salt and Pure Sodium Chloride	0.0584	195.37	187.29	164.89	+ 4.31	+ 18.49
027 Electrical Energy	5.4912	226.10	226.10	166.13	+ 0.00	+ 36.10
Food, Beverages, Tobacco, Textil	31.1122	191.67	190.65	177.32	+ 0.54	+ 8.09
Food Products, Beverages &	20.0718	193.47	193.18	180.69	+ 0.15	+ 7.07
028 Meat of Animals	3.4559	231.85	230.45	223.72	+ 0.61	+ 3.63
029 Vegetables and Fruit Juice	0.0058	189.33	189.33	177.93	+ 0.00	+ 6.41
030 Dried Fruits and Nuts	0.1733	222.72	222.50	196.91	+ 0.10	+ 13.11
031 Fruit Juices	0.3880	159.33	158.79	157.86	+ 0.34	+ 0.93
032 Vegetable Oils Refined	1.9242	159.96	159.62	154.59	+ 0.21	+ 3.47
033 Vegetable Ghee	1.5632	140.80	140.73	143.93	+ 0.05	- 2.17
034 Oil Cakes	0.9611	164.12	164.73	135.09	- 0.37	+ 21.49
035 Processed Liquid Milk	4.4437	208.43	208.43	187.39	+ 0.00	+ 11.23
036 Milk and Cream in Solid Form	0.0316	171.40	171.22	166.51	+ 0.11	+ 2.94
037 Ice Cream	0.0047	173.49	173.49	161.68	+ 0.00	+ 7.30
038 Dairy Products N.E.C	0.0117	211.73	210.68	197.89	+ 0.50	+ 6.99
039 Wheat Flour	2.3034	178.37	182.24	154.79	- 2.12	+ 15.23
040 Other Cereal Flour	0.0604	173.25	183.27	191.42	- 5.47	- 9.49
041 Sugar Refined	1.7975	201.52	196.65	207.78	+ 2.48	- 3.01
042 Chocolate	0.0139	99.19	99.19	100.26	+ 0.00	- 1.07
043 Sugar Confectionary	0.0738	102.28	102.28	100.40	+ 0.00	+ 1.87
044 Coffee and Tea	0.7303	217.19	212.31	195.35	+ 2.30	+ 11.18
045 Spices	0.1449	251.26	266.67	303.48	- 5.78	- 17.21
046 Other Food Products	0.0336	316.35	319.06	318.94	- 0.85	- 0.81
047 Mineral Water	0.0207	170.88	168.32	165.82	+ 1.52	+ 3.05
048 Beverages	0.6303	137.86	137.86	135.24	+ 0.00	+ 1.94
049 Tobacco Products	1.2998	208.80	208.80	174.93	+ 0.00	+ 19.36
Textiles & Apparels	10.3289	193.04	190.53	174.83	+ 1.32	+ 10.42
050 Cotton Yarn	5.2491	216.90	215.58	193.36	+ 0.61	+ 12.17
051 Nylon Yarn	0.1719	187.63	185.28	195.64	+ 1.27	- 4.09
052 Blended Yarn	0.1689	199.68	199.23	183.85	+ 0.23	+ 8.61
053 Woven Fabrics	0.0128	208.98	208.98	171.55	+ 0.00	+ 21.82
054 Cotton Fabrics	0.6343	178.26	174.17	175.67	+ 2.35	+ 1.47
055 Other Fabrics	1.1016	169.83	165.62	161.72	+ 2.54	+ 5.01
056 Silk and Reyon Fabrics	0.7350	156.87	154.21	141.18	+ 1.72	+ 11.11

Annexure B: Wholesale Price Indices by Major Groups & Commodities (2007-2008=100)

Item and Specification	Weight	Index Numbers			% Change in Apr 2013 over	
		Apr 13	Mar 13	Apr 12	Mar 2013	Apr 2012
057 Towels	0.1235	210.01	203.06	189.19	+ 3.42	+ 11.00
058 Blankets	0.0029	185.21	185.21	161.28	+ 0.00	+ 14.84
059 Bed Sheets	0.0913	212.73	208.11	174.13	+ 2.22	+ 22.17
060 Quilts	0.0019	153.32	153.32	147.05	+ 0.00	+ 4.26
061 Woolen Carpets	0.0383	106.55	106.55	103.57	+ 0.00	+ 2.88
062 Synthetic Carpets	0.0566	114.41	114.41	144.07	+ 0.00	- 20.59
063 Hosiery Products	0.8832	185.14	181.47	163.35	+ 2.02	+ 13.34
064 Readymade Garments	1.0576	142.83	138.19	126.92	+ 3.36	+ 12.54
Leather Products	0.7115	120.99	120.99	118.56	+ 0.00	+ 2.05
065 Leather without Hair	0.2973	109.83	109.83	109.83	+ 0.00	+ 0.00
066 Other Leather N.E.C	0.2567	122.57	122.57	122.57	+ 0.00	+ 0.00
067 Footwears	0.1575	139.49	139.49	128.50	+ 0.00	+ 8.55
Other Transportable Goods	22.3659	205.35	206.04	208.92	- 0.33	- 1.71
068 Timber	0.0165	152.98	152.79	144.14	+ 0.12	+ 6.13
069 Printing Paper	0.4279	168.66	166.52	133.29	+ 1.29	+ 26.54
070 Hard Board	0.1579	187.50	187.50	158.33	+ 0.00	+ 18.42
071 Coke	0.2797	163.45	163.45	163.45	+ 0.00	+ 0.00
072 Motor Spirit	1.5336	172.82	172.73	174.61	+ 0.05	- 1.03
073 Diesel Oil	5.2664	257.92	261.36	265.00	- 1.32	- 2.67
074 Kerosine Oil	0.2151	262.00	264.94	266.52	- 1.11	- 1.70
075 Furnace Oil	3.2664	174.79	178.20	220.75	- 1.91	- 20.82
076 Mobil Oil	0.7114	187.49	187.12	178.98	+ 0.20	+ 4.75
077 Chemicals	1.7720	160.14	156.83	145.98	+ 2.11	+ 9.70
078 Dyeing Material	0.1539	107.23	107.23	104.26	+ 0.00	+ 2.85
079 Fertilizers	2.8657	261.31	261.17	270.34	+ 0.05	- 3.34
080 Pesticides	0.2763	197.49	197.49	165.53	+ 0.00	+ 19.31
081 Insecticides	0.1276	123.20	122.97	125.52	+ 0.19	- 1.85
082 Paints and Varnishes	0.1916	241.08	236.93	202.50	+ 1.75	+ 19.05
083 Medicines	1.1428	139.66	139.93	120.38	- 0.19	+ 16.02
084 Soaps and Detergents	0.8168	170.95	168.46	155.89	+ 1.48	+ 9.66
085 Auto Tyres	0.2703	181.43	181.47	175.62	- 0.02	+ 3.31
086 Plastic Products	0.4550	196.56	192.40	186.58	+ 2.16	+ 5.35
087 Glass sheets	0.2089	201.02	192.74	172.43	+ 4.30	+ 16.58
088 Other Glass Articles	0.1635	199.53	198.72	216.51	+ 0.41	- 7.84
089 Ceramics and Sanitary Fixture	0.0244	161.77	161.77	144.10	+ 0.00	+ 12.26
090 Bricks, Blocks and Tiles	0.1566	180.18	177.53	171.12	+ 1.49	+ 5.29
091 Cement	1.8145	188.24	188.35	175.39	- 0.06	+ 7.33
092 Bed Foam	0.0006	142.83	142.83	131.00	+ 0.00	+ 9.03
093 Matches	0.0505	142.72	133.50	120.63	+ 6.91	+ 18.31
Metal Product, Machinery & Eq	8.7156	159.93	158.87	156.18	+ 0.67	+ 2.40
094 Pig Iron	0.0593	128.97	128.97	128.97	+ 0.00	+ 0.00
095 Steel Bar and Sheets	1.4022	133.52	132.16	135.01	+ 1.03	- 1.10
096 Pipe Fittings	0.0780	148.98	141.71	142.31	+ 5.13	+ 4.69
097 Steel Products	0.3879	166.25	161.94	158.78	+ 2.66	+ 4.70
098 Engines and Motors	0.0046	109.07	109.07	109.07	+ 0.00	+ 0.00
099 Vacuum Pumps	0.0155	115.39	115.39	115.39	+ 0.00	+ 0.00
100 Air Conditioners	0.0049	176.43	172.67	168.43	+ 2.18	+ 4.75
101 Cultivators	0.0551	189.23	189.23	184.66	+ 0.00	+ 2.47
102 Chuff Cutter	0.1293	144.94	144.94	131.08	+ 0.00	+ 10.57
103 Tractors	0.0028	161.96	161.96	172.36	+ 0.00	- 6.03
104 Lathe Machines	0.0525	147.68	147.68	147.68	+ 0.00	+ 0.00
105 Concrete Mixture	0.0107	138.83	138.83	138.83	+ 0.00	+ 0.00
106 Fridge,WashM,SewM,Fans,Iron	1.1645	171.52	167.15	164.86	+ 2.61	+ 4.04
107 Electric Wires	0.0912	159.57	159.57	165.49	+ 0.00	- 3.58
108 Lighting Equipments	1.4431	148.26	148.26	145.49	+ 0.00	+ 1.90
109 Radio and Television	0.1843	126.49	126.49	132.73	+ 0.00	- 4.70
110 Motor Vehicles	0.0244	173.75	173.75	160.28	+ 0.00	+ 8.40
111 Motorcycles	0.2570	125.07	125.07	124.02	+ 0.00	+ 0.85
112 Bicycles	3.3483	177.09	177.09	171.52	+ 0.00	+ 3.25