

Monthly Review on Price Indices



September, 2012
(Base 2007-08)

Government of Pakistan
Statistics Division
Pakistan Bureau of Statistics
Islamabad

Inflation in Brief

1. CPI inflation, General, increased by 8.8% on year-on-year basis in September 2012 as compared to 9.1% in the previous month and 10.5% in September 2011. On month-on-month basis, it increased by 0.8% in September 2012 as compared to 0.9% in the previous month and an increase by 1.0% in September 2011.
2. Core inflation measured by non-food non-energy CPI (Core NFNE) increased by 10.4% in September 2012 as compared to 10.8% in August 2012 (YoY) and by 10.6% in September 2011. Core NFNE inflation on MoM basis increased by 0.4% in September 2012 as compared to 0.3% a month earlier and 0.7% in September 2011.
3. Core inflation, measured by 20% weighted trimmed mean CPI (Core Trimmed) increased by 10.4% in September 2012 and by 10.6% in August 2012 (YoY) which increased by 11.7% in September 2011. Core Trimmed inflation has increased by 0.5% on MoM basis in September 2012 as compared to 0.4% in August 2012 which increased by 0.6% in September 2011.
4. SPI inflation on YoY basis increased by 8.1% in September 2012 compared with 8.2% a month earlier and 7.6% in September 2011. On MoM basis, it increased by 1.3% each in September 2012, August 2012 and September 2011.
5. WPI inflation on YoY basis increased to 7.8% in September 2012 compared with 7.7% a month earlier and 17.0% in September 2011. WPI inflation on MoM basis increased by 0.3% in September 2012 as compared to an increase of 1.0% a month earlier and 0.2% in September 2011.
6. Figures 1 and 2 show graphically the data of Table 1. Table 1.1 shows "Period Average" and "YoY" percent changes in indices of three years.

Table 1: Inflation (%) (Base 2007-08)

Period	CPI						Core Inflation				SPI**		WPI	
	General		Food		Non-food		NFNE*		Trimmed		YoY	MoM	YoY	MoM
	YoY	MoM	YoY	MoM	YoY	MoM	YoY	MoM	YoY	MoM				
Aug 11	11.6	1.4	13.2	1.4	10.4	1.4	10.0	0.8	12.5	0.8	11.6	0.8	18.7	0.6
Sep 11	10.5	1.0	9.9	1.6	10.9	0.6	10.6	0.7	11.7	0.6	7.6	1.3	17.0	0.2
Oct 11	11.0	1.4	11.7	1.6	10.4	1.3	10.4	1.4	11.7	1.0	6.5	0.8	15.4	0.4
Nov 11	10.2	0.3	10.0	0.1	10.3	0.4	10.4	0.6	11.5	0.5	3.8	0.7	12.0	-0.5
Dec 11	9.7	-0.7	9.5	-2.2	9.9	0.4	10.1	0.4	10.5	0.3	3.0	-2.0	8.3	-1.3
Jan 12	10.1	1.5	9.2	1.5	10.7	1.6	10.2	1.1	10.4	0.8	3.9	1.0	8.7	2.3
Feb 12	11.0	0.3	10.5	-0.7	11.5	1.0	10.6	0.7	10.7	0.5	5.2	-0.1	7.2	0.6
Mar 12	10.8	1.2	9.8	1.5	11.5	0.9	10.8	1.0	10.5	0.8	6.1	1.5	4.5	0.7
Apr 12	11.3	1.8	10.7	2.2	11.6	1.6	10.8	1.4	11.0	1.3	7.5	1.7	3.8	1.8
May 12	12.3	1.1	11.3	0.2	13.1	1.9	11.1	0.8	11.7	0.5	8.1	-0.1	7.1	2.1
Jun 12	11.3	0.0 ¹	10.3	-0.2	12.0	0.2	11.4	0.7	11.1	0.5	9.7	1.4	6.4	0.0 ²
Jul 12	9.6	-0.2	9.1	1.8	10.0	-1.7	11.3	1.0	10.7	0.7	7.7	0.5	7.2	0.4
Aug 12	9.1	0.9	8.5	0.9	9.4	0.9	10.8	0.3	10.6	0.4	8.2	1.3	7.7	1.0
Sep 12	8.8	0.8	7.6	0.7	9.7	0.9	10.4	0.4	10.4	0.5	8.1	1.3	7.8	0.3

*NFNE is non-food non-energy, ** SPI for quintile 1, ¹ Actual figure is 0.04, displayed in rounded figure
² Actual figure is -0.05, displayed in rounded figure

Table 1.1 : Period Average and YoY % Changes of Indices (Base 2007-08)

Index	Averages July-September % Changes			September over September % Changes		
	2012-13	2011-12	2010-11	2012-13	2011-12	2010-11
CPI	9.14	11.47	13.36	8.79	10.46	14.89
SPI	7.96	10.68	15.59	8.06	7.56	18.92
WPI	7.59	18.63	18.09	7.82	16.98	18.56

Figure 1: CPI Inflation YoY, Special Indices

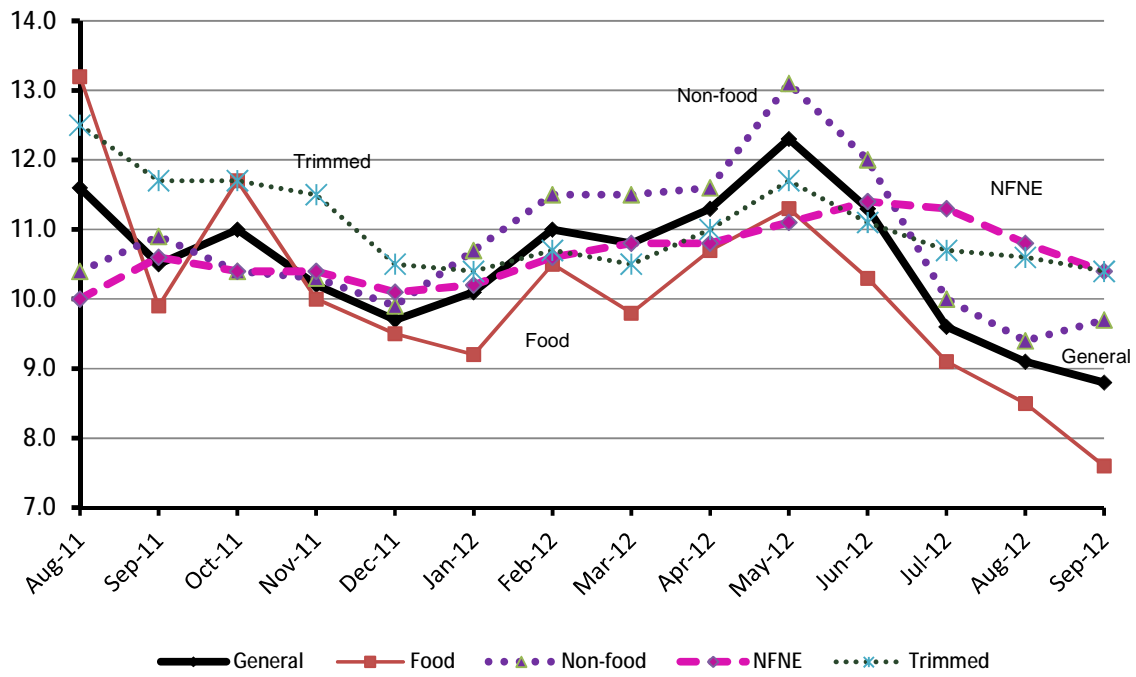
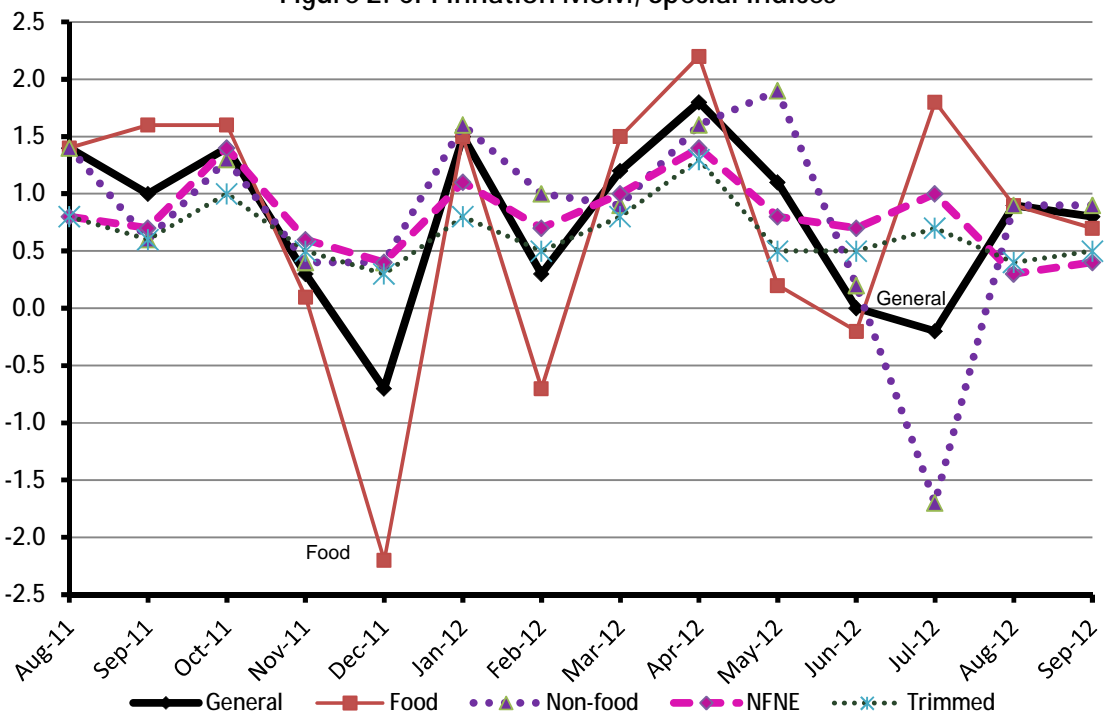


Figure 2: CPI Inflation MoM, Special Indices



I. Consumer Price Index (CPI)

The Consumer Price Index of September, 2012 has increased by 0.79% over August, 2012 and increased by 8.79% over corresponding month of last year.

Table 2 : Consumer Price Index by Group of Commodities and Services (Base 2007-08)

No	Group	Group Weight (%)	Indices			% Change Sep 2012 over		Impact (Adjusted) (In % points) Sep 2012 over	
			Sep 2012	Aug 2012	Sep 2011	Aug 2012	Sep 2011	Aug 2012	Sep 2011
	General	100.00	172.44	171.09	158.50	0.79	8.79	0.79	8.79
1.	Food & Non-alcoholic Bev.	34.83	193.80	192.43	180.91	0.71	7.13	0.27	2.50
	<i>Non-perishable Food Items</i>	29.84	191.46	190.36	178.47	0.58	7.28	0.19	2.18
	<i>Perishable Food Items</i>	4.99	207.77	204.78	195.52	1.46	6.27	0.08	0.31
2.	Alcoholic Bev. & Tobacco	1.41	190.34	189.91	161.56	0.23	17.81	0.00	0.25
3.	Clothing & Footwear	7.57	168.51	167.23	146.68	0.77	14.88	0.06	1.13
4.	Housing, Water, Electricity, Gas & Fuels	29.41	147.99	147.95	141.80	0.03	4.37	0.01	1.29
5.	Furnishing & Household Equipment Maintenance	4.21	175.40	174.05	149.49	0.78	17.33	0.04	0.73
6.	Health	2.19	153.94	152.39	133.64	1.02	15.19	0.02	0.33
7.	Transport	7.20	194.25	186.61	162.97	4.09	19.19	0.32	1.39
8.	Communication	3.22	123.56	123.56	123.33	0.00	0.19	0.00	0.01
9.	Recreation & Culture	2.03	165.24	165.19	139.53	0.03	18.43	0.00	0.37
10.	Education	3.94	153.87	153.60	140.24	0.18	9.72	0.01	0.39
11.	Restaurants & Hotels	1.23	197.85	196.56	180.17	0.66	9.81	0.01	0.12
12.	Miscellaneous	2.76	195.65	192.44	177.73	1.67	10.08	0.05	0.28

Main contributors to month-on-month and year-on-year percentage changes are given below and detail is given in Annexure A.

1. **Month-on-month** Top few commodities which varied from previous month i.e. August 2012 are given below:-

Food Items Increased: Fresh Vegetables (23.23%), Onions (13.77%), Eggs (12.08%), Wheat Flour (5.72%), Wheat (4.98%), Wheat Product (3.85%), Potatoes (2.24%), Nimco (1.55%), Rice (1.22%), Cereals (1.15%) and Meat (1.04%).

Decreased: Chicken (15.46%), Tomatoes (14.33%), Fresh Fruits (13.02%), Pulse Moong (2.34%), Sugar (1.12%), Dry Fruits (1.10%) and Gram Whole (0.55%).

Non-food Items Increased: Motor Fuel (9.81%), Kerosene Oil (6.25%), Personal Equipments (3.67%), Woolen Readymade Garments (2.32%), Hosiery (1.96%), Dopatta (1.80%), Woolen Cloth (1.39%), Household Servant (1.31%), Drugs & Medicines (1.20%) and Medical Equipments (1.18%).

Decreased: Cotton Cloth (0.18%).

2. **Year-on-year:** Top few commodities which varied from previous year i.e. September 2011 are given below:-

Food Items Increased: Pulse Gram (47.87%), Besan (42.47%), Tomatoes (32.32%), Beans (21.13%), Honey (19.25%), Onions (18.86%), Cigarettes (17.98%), Gram Whole (17.67%), Milk Powder (17.53%) and Condiments (17.35%).

Decreased: Sugar (28.83%), Gur (19.20%), Pulse Moong (14.87%), Chicken (11.88%), Pulse Mash (9.98%), Pulse Masoor (8.34%), Fresh Vegetables (4.09%), and Potatoes (2.87%).

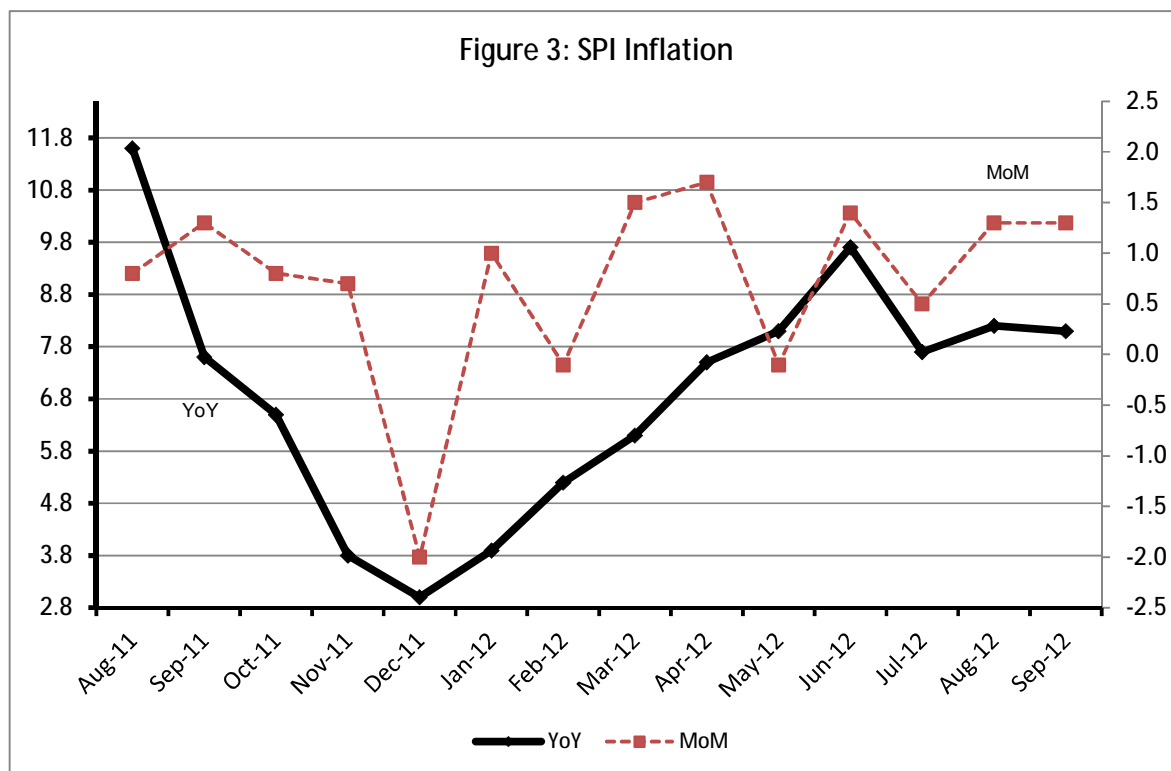
Non-food Items Increased: Text Books (39.98%), Household Servant (30.36%), Motor Fuel (26.68%), Motor Vehicle Tax (25.73%), Doctor (MBBS) Clinic Fee (23.17%), Firewood Whole (22.22%), Utensils (21.38%), Cleaning & Laundry (20.00%) and Dopatta (19.08%).

Decreased: Gas (42.09%).

III. Sensitive Price Indicator

Quintile-wise percentage changes YoY and MoM are given below in Table 3. The series from August 2011 to September 2012 is also graphed below in Figure 3.

Table 3 : Sensitive Price Indicator (Base 2007-08)					
Quintiles	Indices			% Change Sep 2012 over	
	Sep 2012	Aug 2012	Sep 2011	Aug 2012	Sep 2011
1	182.60	180.34	168.98	1.25	8.06
2	188.81	186.89	171.51	1.03	10.09
3	187.61	185.92	170.94	0.91	9.75
4	188.86	187.33	177.45	0.82	6.43
5	189.40	187.77	180.75	0.87	4.79
Combined	188.17	186.47	175.02	0.91	7.51



IV. Wholesale Price Index

The Wholesale Price Index for September 2012 increased by 0.35% over August 2012. It increased by 7.82% over the corresponding month of the last year. YoY and MoM movements, from August 2011 to September 2012 are also graphed below in Figure 4.

Table 4 : Wholesale Price Index by Group of Commodities (Base 2007-08)

No.	Group	Group Weight (%)	Indices			% Change September 2012 over		Impact (Adjusted) (in %age points) Sep 2012 over	
			Sep 2012	Aug 2012	Sep 2011	Aug 2012	Sep 2011	Aug 2012	Sep 2011
	General	100.00	192.66	191.99	178.68	0.35	7.82	0.35	7.82
1.	Agriculture, Forestry & Fishery Products	25.77	194.63	196.79	190.20	-1.10	2.33	-0.15	0.94
2.	Ores & Minerals, Electricity, Gas & Water	12.04	207.86	207.36	170.24	0.24	22.10	0.03	2.43
3.	Food Products, Beverages & Tobacco, Textiles, Apparel & Leather Products	31.11	184.53	183.90	176.66	0.34	4.45	0.09	1.57
	i. Food Products, Bev. & Tobacco	20.07	189.86	188.39	180.65	0.78	5.10	0.15	1.19
	ii. Textiles and Apparel	10.33	178.72	179.69	173.54	-0.54	2.98	-0.06	0.32
	iii. Leather Products	0.71	118.56	118.56	109.33	0.00	8.44	0.00	0.05
4.	Other Transportable Goods except Metal Products, Machinery & Equipments	22.37	207.14	202.63	184.43	2.23	12.31	0.40	2.43
5.	Metal Products, Machinery & Equipments	8.72	157.74	158.17	148.70	-0.27	6.08	-0.02	0.45

Main contributors to month-on-month and year-on-year percentage changes are given below and detail is given in Annexure B.

1. **Month-on-month** Top few commodities which varied from previous month i.e. August 2012 are given below:-

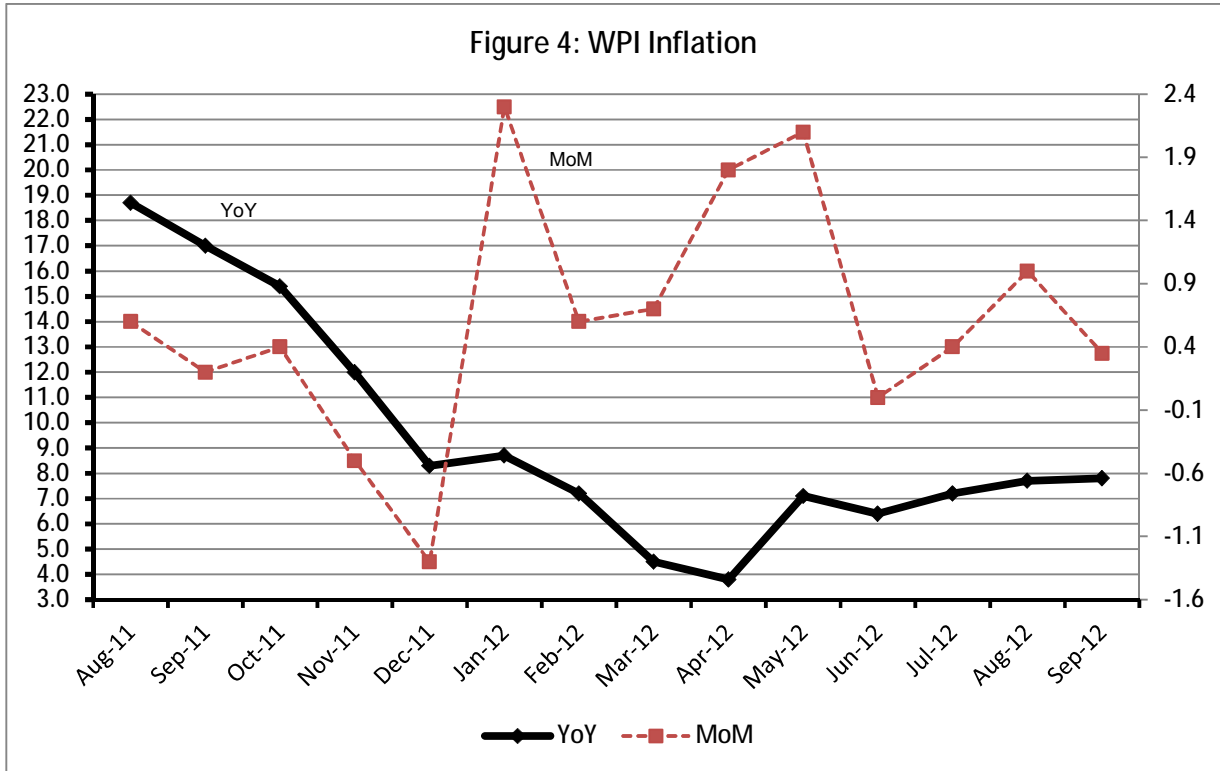
Increased: Vegetables (20.24%), Eggs (19.02%), Petrol (10.23%), Kerosine Oil (9.06%), Diesel (8.38%), Bajra (7.39%), Pesticides (7.19%), Oil Cakes (6.12%), Wheat (5.17%), Wheat flour (4.71%) and Blanket (4.08%).

Decreased: Fresh Fruits (18.53%), Poultry (17.87%), Other glass articles (13.24%), Synthetic Carpets (11.88%), Cotton Seeds (7.07%), Furnace Oil (6.69%), Radio and Television (4.72%), Readymade Garments (4.28%), Fibre Crops (3.21%) and Sugar (2.96%).

2. **Year-on-year** Top ten commodities which varied from previous year i.e. September, 2011 are given below:-

Increased: Coal not Agglomerated (56.25%), Spices (46.53%), Other Cereal Flour (41.88%), Fresh Fruits (40.99%), Electrical Energy (36.10%), Paints and Varnishes (30.59%), Printing Paper (30.02%), Footwears (26.63%), Bajra (24.97%) and Fish live (24.70%).

Decreased: Sugar Refined (30.59%), Synthetic Carpets (27.24%), Stimulant and Spice Crops (20.37%), Cotton Seeds (17.91%), Fiber Crops (17.79%), Poultry (17.50%), Edible Roots/Potatoes (12.12%), Tractors (10.46%), Nylon Yarn (9.88%) and Blended Yarn (8.01%).



Annexure A: Consumer Price Index Numbers by Commodity Groups & Commodities (2007 - 2008 = 100)

Item and Specification	Weight	Index Numbers			% Change in		Sep 2012 Over	
		Sep 2012	Aug 2012	Sep 2011	Aug 2012	Sep 2011	Sep 2012	Over Sep 2011
General	100.000	172.44	171.09	158.50	+	0.79	+	8.79
Food & Non-alcoholic Beverages	34.8343	193.80	192.43	180.91	+	0.71	+	7.13
01 Wheat	0.3477	169.28	161.25	153.01	+	4.98	+	10.63
02 Wheat Flour	4.1648	177.85	168.22	161.83	+	5.72	+	9.90
03 Wheat Product	0.0959	170.63	164.31	158.88	+	3.85	+	7.40
04 Besan	0.1500	236.24	236.13	165.82	+	0.05	+	42.47
05 Rice	1.5821	170.51	168.45	150.80	+	1.22	+	13.07
06 Cereals	0.1563	199.55	197.29	182.11	+	1.15	+	9.58
07 Bakery & Confectionary	1.1550	171.50	170.69	158.21	+	0.47	+	8.40
08 Nimco	0.4574	195.37	192.39	175.55	+	1.55	+	11.29
09 Meat	2.4303	217.68	215.44	198.25	+	1.04	+	9.80
10 Chicken	1.3596	153.14	181.15	173.78	-	15.46	-	11.88
11 Fish	0.2970	184.50	184.21	165.60	+	0.16	+	11.41
12 Milk Fresh	6.6800	214.85	213.26	188.77	+	0.75	+	13.82
13 Milk Products	0.6338	208.08	207.43	187.08	+	0.31	+	11.23
14 Milk Powder	0.1129	182.22	181.39	155.04	+	0.46	+	17.53
15 Eggs	0.4555	183.56	163.77	166.34	+	12.08	+	10.35
16 Mustard Oil	0.0952	160.47	160.17	148.69	+	0.19	+	7.92
17 Cooking Oil	1.7538	164.65	164.15	145.15	+	0.30	+	13.43
18 Vegetable Ghee	2.0714	163.96	163.86	156.34	+	0.06	+	4.87
19 Dry Fruits	0.2543	200.92	203.16	192.58	-	1.10	+	4.33
20 Fresh Fruits	1.8649	207.64	238.71	184.54	-	13.02	+	12.52
21 Pulse Masoor	0.2712	143.69	142.88	156.76	+	0.57	-	8.34
22 Pulse Moong	0.2336	223.28	228.62	262.27	-	2.34	-	14.87
23 Pulse Mash (Washed)	0.2098	193.99	193.59	215.49	+	0.21	-	9.98
24 Pulse Gram	0.2361	240.06	238.30	162.35	+	0.74	+	47.87
25 Gram Whole	0.1616	228.39	229.65	194.09	-	0.55	+	17.67
26 Beans	0.0269	207.52	207.20	171.32	+	0.15	+	21.13
27 Potatoes	0.4598	206.16	201.64	212.26	+	2.24	-	2.87
28 Onion	0.5239	224.60	197.41	188.96	+	13.77	+	18.86
29 Tomatoes	0.4318	168.36	196.52	127.24	-	14.33	+	32.32
30 Fresh Vegetables	1.7105	213.15	172.97	222.25	+	23.23	-	4.09
31 Sugar	1.0445	193.11	195.29	271.34	-	1.12	-	28.83
32 Gur	0.0220	223.96	222.88	277.19	+	0.48	-	19.20
33 Honey	0.0446	238.98	237.13	200.41	+	0.78	+	19.25
34 SweetMeat	0.2483	202.90	201.85	183.28	+	0.52	+	10.70
35 Beverages	1.1990	170.37	170.95	159.43	-	0.34	+	6.86
36 Jam, Tomato Ketchup & Pickles	0.2454	174.05	173.19	168.05	+	0.50	+	3.57
37 Condiments	0.2656	212.32	211.99	180.93	+	0.16	+	17.35
38 Spices	0.5441	265.88	267.12	241.85	-	0.46	+	9.94
39 Tea	0.8377	202.17	202.38	200.16	-	0.10	+	1.00
Alcoholic Beverages, Tobacco	1.4135	190.34	189.91	161.56	+	0.23	+	17.81
40 Cigarettes	1.3906	190.53	190.12	161.50	+	0.22	+	17.98
41 Betel Leaves & Nuts	0.0229	178.59	177.28	165.08	+	0.74	+	8.18
Clothing & Footwear	7.5708	168.51	167.23	146.68	+	0.77	+	14.88
42 Cotton Cloth	1.7286	155.96	156.24	145.86	-	0.18	+	6.92
43 Woolen Cloth	0.8759	188.17	185.59	160.76	+	1.39	+	17.05
44 Readymade Garments	0.9739	169.35	168.36	145.16	+	0.59	+	16.66
45 Woolen Readymade Garments	0.3964	165.18	161.44	140.76	+	2.32	+	17.35
46 Hosiery	0.5094	179.11	175.66	152.88	+	1.96	+	17.16
47 Dopatta	0.4412	183.24	180.00	153.88	+	1.80	+	19.08
48 Cleaning and Laundry	0.2110	186.62	185.07	155.52	+	0.84	+	20.00
49 Tailoring	0.8840	201.54	199.50	170.67	+	1.02	+	18.09
50 Footwear	1.5504	142.75	142.67	123.12	+	0.06	+	15.94

Annexure A: Consumer Price Index Numbers by Commodity Groups & Commodities (2007 - 2008 = 100)

Item and Specification	Weight	Index Numbers			% Change in Sep 2012 Over			
		Sep 2012	Aug 2012	Sep 2011	Aug 2012	Sep 2011		
<i>Housing, Water, Elec., Gas, Other</i>	29.4149	147.99	147.95	141.80	+	0.03	+	4.37
51 House Rent	21.8149	137.02	137.02	128.63	+	0.00	+	6.52
52 Construction Input Items	0.5623	200.34	199.78	179.42	+	0.28	+	11.66
53 Construction Wage Rates	0.3331	169.83	168.30	149.87	+	0.91	+	13.32
54 Water Supply	0.4971	133.23	133.23	126.90	+	0.00	+	4.99
55 Electricity	4.3985	196.37	196.37	168.71	+	0.00	+	16.39
56 Gas	1.5756	134.34	134.34	232.00	+	0.00	-	42.09
57 Kerosene Oil	0.0057	269.26	253.42	228.72	+	6.25	+	17.72
58 Firewood Whole	0.2277	227.21	226.19	185.91	+	0.45	+	22.22
<i>Furnished H. Hold Equip. & House</i>	4.2082	175.40	174.05	149.49	+	0.78	+	17.33
59 Furniture	0.3315	165.35	164.07	144.67	+	0.78	+	14.29
60 Household Textiles	0.6489	171.59	170.63	147.56	+	0.56	+	16.28
61 Household Equipment	0.5936	156.33	155.95	146.77	+	0.24	+	6.51
62 Utensils	0.3212	173.70	172.04	143.10	+	0.96	+	21.38
63 Plastic Products	0.2547	174.14	173.77	158.01	+	0.21	+	10.21
64 Washing Soaps & Detergents	0.7893	190.56	189.11	167.77	+	0.77	+	13.58
65 Sewing Needle & Dr Cell	0.1496	149.01	148.18	133.81	+	0.56	+	11.36
66 Household Servant	1.0432	183.91	181.54	141.08	+	1.31	+	30.36
67 Marriage Hall Charges	0.0762	189.76	189.00	163.18	+	0.40	+	16.29
<i>Health</i>	2.1868	153.94	152.39	133.64	+	1.02	+	15.19
68 Drugs & Medicines	1.2667	137.28	135.65	123.51	+	1.20	+	11.15
69 Medical Equipments	0.0080	194.20	191.94	169.05	+	1.18	+	14.88
70 Doctor (MBBS) Clinic Fee	0.5904	189.17	187.93	153.58	+	0.66	+	23.17
71 Medical Tests	0.3217	153.85	152.08	136.05	+	1.16	+	13.08
<i>Transport</i>	7.2023	194.25	186.61	162.97	+	4.09	+	19.19
72 Motor Vehicles	0.6630	151.17	150.97	138.69	+	0.13	+	9.00
73 Motor Vehicle Accessories	0.2439	204.52	203.89	178.91	+	0.31	+	14.31
74 Motor Fuel	3.0269	201.27	183.29	158.88	+	9.81	+	26.68
75 Mechanical Service	0.4552	180.11	179.46	152.48	+	0.36	+	18.12
76 Motor Vehicle Tax	0.1099	152.02	152.02	120.91	+	0.00	+	25.73
77 Transport Services	2.7034	200.12	200.12	175.55	+	0.00	+	14.00
<i>Communication</i>	3.2198	123.56	123.56	123.33	+	0.00	+	0.19
78 Postal Services	0.0662	171.43	171.37	163.13	+	0.04	+	5.09
79 Communication & Apparatus	3.1536	122.56	122.55	122.49	+	0.01	+	0.06
<i>Recreation & Culture</i>	2.0227	165.24	165.19	139.53	+	0.03	+	18.43
80 Recreation & Culture	0.8634	121.68	121.64	115.29	+	0.03	+	5.54
81 Text Books	0.5706	230.23	230.37	164.47	-	0.06	+	39.98
82 Newspapers	0.1934	154.22	154.22	142.03	+	0.00	+	8.58
83 Stationery	0.3953	171.95	171.61	155.26	+	0.20	+	10.75
<i>Education</i>	3.9431	153.87	153.60	140.24	+	0.18	+	9.72
84 Education	3.9431	153.87	153.60	140.24	+	0.18	+	9.72
<i>Restaurants & Hotels</i>	1.2286	197.85	196.56	180.17	+	0.66	+	9.81
85 Readymade Food	1.2286	197.85	196.56	180.17	+	0.66	+	9.81
<i>Miscellaneous Goods & Services</i>	2.7550	195.65	192.44	177.73	+	1.67	+	10.08
86 Personal Care	1.4935	176.39	175.58	154.84	+	0.46	+	13.92
87 Cosmetics	0.3853	148.59	148.35	135.82	+	0.16	+	9.40
88 Blades	0.0322	169.80	169.56	153.84	+	0.14	+	10.37
89 Personal Equipments	0.8440	252.20	243.27	238.29	+	3.67	+	5.84

Annexure B: Wholesale Price Indices by Major Groups and Commodities

(2007 - 2008 = 100)

Item and Specification	Weight	Index Numbers			% Change in Sep 2012 Over			
		Sep 2012	Aug 2012	Sep 2011	Aug 2012	Sep 2011		
General	100.0000	192.66	191.99	178.68	+	0.35	+	7.82
Agriculture Forestry &	25.7674	194.63	196.79	190.20	-	1.10	+	2.33
001 Wheat	0.6297	177.08	168.38	159.16	+	5.17	+	11.26
002 Maize	0.6764	174.03	170.14	161.05	+	2.29	+	8.06
003 Rice	2.4413	162.33	158.39	150.25	+	2.49	+	8.04
004 Sorghum/Jowar	0.0214	197.09	201.88	173.81	-	2.37	+	13.39
005 Millet/Bajra	0.0374	192.59	179.34	154.11	+	7.39	+	24.97
006 Vegetables	1.2441	253.47	210.80	252.72	+	20.24	+	0.30
007 Fresh Fruits	1.5144	228.22	280.12	161.87	-	18.53	+	40.99
008 Dry Fruits	0.2478	173.12	174.44	183.95	-	0.76	-	5.89
009 Cotton Seeds	1.1511	162.42	174.78	197.86	-	7.07	-	17.91
010 Other Oil Seeds	0.0722	179.64	176.96	163.39	+	1.51	+	9.95
011 Edible Roots/Potatoes	0.2540	201.22	195.16	228.96	+	3.11	-	12.12
012 Stimulant and Spice Crops	0.1634	166.95	166.85	209.67	+	0.06	-	20.37
013 Pulses	0.4901	216.53	219.37	209.04	-	1.29	+	3.58
014 Sugar Crops	1.0725	267.92	267.92	271.70	+	0.00	-	1.39
015 Fibre Crops	5.3169	180.60	186.59	219.67	-	3.21	-	17.79
016 Unmanufactured Tobacco	0.0742	168.46	167.67	167.70	+	0.47	+	0.45
017 Poultry	0.5633	152.21	185.32	184.50	-	17.87	-	17.50
018 Raw Milk from Bovine Animals	7.0279	208.85	208.85	185.17	+	0.00	+	12.79
019 Eggs	0.5034	192.74	161.94	173.69	+	19.02	+	10.97
020 Raw Animal Materials/Wool	0.0351	135.45	134.22	133.72	+	0.92	+	1.29
021 Hides and Fur Skins, Raw	0.4834	137.35	137.25	122.70	+	0.07	+	11.94
022 Fuel Wood in Logs	0.0179	204.59	203.50	178.81	+	0.54	+	14.42
023 Fish Live Fresh or Chilled	1.7295	176.07	175.63	141.19	+	0.25	+	24.70
Ores/Minerals, Elec., Gas &	12.0389	207.86	207.36	170.24	+	0.24	+	22.10
024 Coal not Agglomerated	0.7508	196.08	196.08	125.49	+	0.00	+	56.25
025 Natural Gas Liquefied	5.7385	192.41	191.36	180.26	+	0.55	+	6.74
026 Salt and Pure Sodium Chloride	0.0584	162.41	162.41	147.42	+	0.00	+	10.17
027 Electrical Energy	5.4912	226.10	226.10	166.13	+	0.00	+	36.10
Food, Beverages, Tobacco, Te	31.1122	184.53	183.90	176.66	+	0.34	+	4.45
Food Products, Beverages	20.0718	189.86	188.39	180.65	+	0.78	+	5.10
028 Meat of Animals	3.4559	226.71	225.92	204.23	+	0.35	+	11.01
029 Vegetables and Fruit Juice	0.0058	183.67	181.33	174.55	+	1.29	+	5.22
030 Dried Fruits and Nuts	0.1733	217.12	212.89	192.58	+	1.99	+	12.74
031 Fruit Juices	0.3880	156.65	156.91	153.88	-	0.17	+	1.80
032 Vegetable Oils Refined	1.9242	157.46	157.66	152.87	-	0.13	+	3.00
033 Vegetable Ghee	1.5632	143.63	144.58	141.30	-	0.66	+	1.65
034 Oil Cakes	0.9611	164.48	155.00	158.18	+	6.12	+	3.98
035 Processed Liquid Milk	4.4437	208.43	205.63	175.46	+	1.36	+	18.79
036 Milk and Cream in Solid Form	0.0316	171.00	169.45	176.13	+	0.91	-	2.91
037 Ice Cream	0.0047	170.00	170.00	153.62	+	0.00	+	10.66
038 Dairy Products N.E.C	0.0117	204.36	204.36	172.23	+	0.00	+	18.66
039 Wheat Flour	2.3034	162.40	155.10	149.32	+	4.71	+	8.76
040 Other Cereal Flour	0.0604	207.98	210.99	146.59	-	1.43	+	41.88
041 Sugar Refined	1.7975	198.63	204.68	286.18	-	2.96	-	30.59
042 Chocolate	0.0139	99.19	99.19	101.46	+	0.00	-	2.24
043 Sugar Confectionary	0.0738	100.40	100.40	100.89	+	0.00	-	0.49
044 Coffee and Tea	0.7303	190.66	190.97	189.90	-	0.16	+	0.40
045 Spices	0.1449	307.94	304.33	210.15	+	1.19	+	46.53
046 Other Food Products	0.0336	328.55	317.63	294.55	+	3.44	+	11.54
047 Mineral Water	0.0207	166.05	166.05	161.05	+	0.00	+	3.10
048 Beverages	0.6303	135.30	135.30	131.03	+	0.00	+	3.26
049 Tobacco Products	1.2998	208.80	208.80	177.04	+	0.00	+	17.94
Textiles & Apparels	10.3289	178.72	179.69	173.54	-	0.54	+	2.98
050 Cotton Yarn	5.2491	200.46	200.46	199.35	+	0.00	+	0.56
051 Nylon Yarn	0.1719	176.45	176.45	195.80	+	0.00	-	9.88
052 Blended Yarn	0.1689	188.46	187.05	204.88	+	0.75	-	8.01
053 Woven Fabrics	0.0128	174.25	169.72	156.77	+	2.67	+	11.15
054 Cotton Fabrics	0.6343	172.55	174.86	161.42	-	1.32	+	6.90
055 Other Fabrics	1.1016	164.13	165.74	145.30	-	0.97	+	12.96
056 Silk and Reyon Fabrics	0.7350	143.52	143.08	137.50	+	0.31	+	4.38
057 Towels	0.1235	193.36	193.36	175.89	+	0.00	+	9.93

Annexure B: Wholesale Price Indices by Major Groups and Commodities

(2007 - 2008 = 100)

Item and Specification	Weight	Index Numbers			% Change in Sep 2012 Over			
		Sep 2012	Aug 2012	Sep 2011	Aug 2012	Sep 2011		
058 Blankets	0.0029	172.59	165.83	139.69	+	4.08	+	23.55
059 Bed Sheets	0.0913	194.91	189.27	156.89	+	2.98	+	24.23
060 Quilts	0.0019	147.05	147.05	141.26	+	0.00	+	4.10
061 Woolen Carpets	0.0383	106.55	106.55	107.14	+	0.00	-	0.55
062 Synthetic Carpets	0.0566	113.15	128.41	155.52	-	11.88	-	27.24
063 Hosiery Products	0.8832	163.76	164.85	149.26	-	0.66	+	9.71
064 Readymade Garments	1.0576	128.64	134.39	123.72	-	4.28	+	3.98
Leather Products	0.7115	118.56	118.56	109.33	+	0.00	+	8.44
065 Leather without Hair	0.2973	109.83	109.83	107.45	+	0.00	+	2.21
066 Other Leather N.E.C	0.2567	122.57	122.57	116.33	+	0.00	+	5.36
067 Footwears	0.1575	128.50	128.50	101.48	+	0.00	+	26.63
Other Transportable Goods	22.3659	207.14	202.63	184.43	+	2.23	+	12.31
068 Timber	0.0165	148.07	145.58	135.75	+	1.71	+	9.08
069 Printing Paper	0.4279	153.92	153.92	118.38	+	0.00	+	30.02
070 Hard Board	0.1579	166.67	166.67	141.67	+	0.00	+	17.65
071 Coke	0.2797	163.45	163.45	155.28	+	0.00	+	5.26
072 Motor Spirit	1.5336	177.23	160.78	143.22	+	10.23	+	23.75
073 Diesel Oil	5.2664	272.24	251.19	226.48	+	8.38	+	20.20
074 Kerosine Oil	0.2151	275.06	252.20	230.92	+	9.06	+	19.11
075 Furnace Oil	3.2664	186.02	199.36	190.55	-	6.69	-	2.38
076 Mobil Oil	0.7114	179.59	179.57	170.23	+	0.01	+	5.50
077 Chemicals	1.7720	148.29	145.05	141.27	+	2.23	+	4.97
078 Dyeing Material	0.1539	104.26	104.26	106.14	+	0.00	-	1.77
079 Fertilizers	2.8657	258.16	261.86	241.00	-	1.41	+	7.12
080 Pesticides	0.2763	197.39	184.15	161.88	+	7.19	+	21.94
081 Insecticides	0.1276	117.64	117.64	126.62	+	0.00	-	7.09
082 Paints and Varnishes	0.1916	233.80	233.80	179.04	+	0.00	+	30.59
083 Medicines	1.1428	139.44	134.51	113.75	+	3.67	+	22.58
084 Soaps and Detergents	0.8168	158.01	157.22	144.74	+	0.50	+	9.17
085 Auto Tyres	0.2703	180.62	176.49	166.32	+	2.34	+	8.60
086 Plastic Products	0.4550	191.31	191.29	179.81	+	0.01	+	6.40
087 Glass sheets	0.2089	190.93	183.78	162.39	+	3.89	+	17.57
088 Other Glass Articles	0.1635	189.11	217.98	194.02	-	13.24	-	2.53
089 Ceramics and Sanitary Fixture	0.0244	157.32	154.64	131.64	+	1.73	+	19.51
090 Bricks, Blocks and Tiles	0.1566	172.01	171.37	158.14	+	0.37	+	8.77
091 Cement	1.8145	180.43	180.22	150.87	+	0.12	+	19.59
092 Bed Foam	0.0006	140.00	139.83	122.33	+	0.12	+	14.44
093 Matches	0.0505	122.82	122.82	115.66	+	0.00	+	6.19
Metal Product, Machinery &	8.7156	157.74	158.17	148.70	-	0.27	+	6.08
094 Pig Iron	0.0593	128.97	128.97	128.97	+	0.00	+	0.00
095 Steel Bar and Sheets	1.4022	137.60	138.84	131.53	-	0.89	+	4.61
096 Pipe Fittings	0.0780	141.47	142.07	139.78	-	0.42	+	1.21
097 Steel Products	0.3879	160.60	160.60	143.15	+	0.00	+	12.19
098 Engines and Motors	0.0046	109.07	109.07	109.07	+	0.00	+	0.00
099 Vacuum Pumps	0.0155	115.39	115.39	115.39	+	0.00	+	0.00
100 Air Conditioners	0.0049	172.67	172.67	163.43	+	0.00	+	5.65
101 Cultivators	0.0551	184.66	184.66	184.66	+	0.00	+	0.00
102 Chuff Cutter	0.1293	138.54	138.54	131.08	+	0.00	+	5.69
103 Tractors	0.0028	161.96	161.96	180.89	+	0.00	-	10.46
104 Lathe Machines	0.0525	147.68	147.68	147.51	+	0.00	+	0.12
105 Concrete Mixture	0.0107	138.83	138.83	138.83	+	0.00	+	0.00
106 Fridge,WashM,SewM,Fans,Iro	1.1645	163.64	164.34	162.29	-	0.43	+	0.83
107 Electric Wires	0.0912	159.57	159.57	155.93	+	0.00	+	2.33
108 Lighting Equipments	1.4431	144.85	144.85	138.36	+	0.00	+	4.69
109 Radio and Television	0.1843	126.46	132.73	128.54	-	4.72	-	1.62
110 Motor Vehicles	0.0244	167.04	167.04	148.17	+	0.00	+	12.74
111 Motorcycles	0.2570	125.19	125.19	121.17	+	0.00	+	3.32
112 Bicycles	3.3483	175.08	175.08	160.14	+	0.00	+	9.33