



Monthly Review on Price Indices



June, 2012
(Base 2007-08)

Government of Pakistan
Statistics Division
Pakistan Bureau of Statistics
Islamabad

I. Inflation in Brief

1. CPI inflation, General, increased by 11.3% on year-on-year basis in June 2012 as compared to 12.3% in the previous month and 13.3% in June 2011. On month-on-month basis, it increased by 0.04% in June 2012 as compared to an increase by 1.1% in the previous month and an increase by 1.0% in June 2011.
2. Core inflation measured by non-food non-energy CPI (Core NFNE) increased by 11.4% in June 2012 as compared to 11.1% in May 2012(YoY) and by 9.8 % in June 2011. Core NFNE inflation on MoM basis increased by 0.7% in June 2012 as compared to 0.8% a month earlier and 0.5 %in June 2011.
3. Core inflation, measured by 20% weighted trimmed mean CPI (Core Trimmed) increased by 11.1% in June 2012 and by 11.7% in May 2012 (YoY) which increased by 12.4% in June 2011. Core Trimmed inflation has increased by 0.5% on MoM basis in June 2012 as well as in May 2012 which increased by 0.7% in June 2011.
4. SPI inflation on YoY basis increased by 9.7% in June 2012 compared with 8.1% a month earlier and 13.0% in June 2011. On MoM basis, it increased by 1.4% in June 2012 as compared to a decrease by 0.1% a month earlier and in June 2011.
5. WPI inflation on YoY basis increased to 6.4% in June 2012 compared with 7.1% a month earlier and 22.8% in June 2011. WPI inflation on MoM basis decreased by 0.05% in June 2012 as compared to an increase of 2.1% a month earlier and an increase of 0.6% in June 2011.
6. Figures 1 and 2 show graphically the data of Table 1. Table 1.1 shows "Period Average" and "YoY" percent changes in indices of three years.

| Table 1: Inflation (%) (Base 2007-08) | | | | | | | | | | | | | | |
|---------------------------------------|---------|------------------|------|------|----------|-----|----------------|-----|---------|-----|-------|------|------|------------------|
| Period | CPI | | | | | | Core Inflation | | | | SPI** | | WPI | |
| | General | | Food | | Non-food | | NFNE* | | Trimmed | | YoY | MoM | YoY | MoM |
| | YoY | MoM | YoY | MoM | YoY | MoM | YoY | MoM | YoY | MoM | | | | |
| May 11 | 12.6 | 0.2 | 15.8 | -0.3 | 10.5 | 0.6 | 9.7 | 0.5 | 12.1 | 0.5 | 13.7 | -0.7 | 22.3 | -1.0 |
| Jun 11 | 13.3 | 1.0 | 15.8 | 0.7 | 11.6 | 1.2 | 9.8 | 0.5 | 12.4 | 0.7 | 13.0 | -0.1 | 22.8 | 0.6 |
| Jul 11 | 12.4 | 1.3 | 17.1 | 2.9 | 9.2 | 0.1 | 9.5 | 1.2 | 11.9 | 1.1 | 13.1 | 2.4 | 20.3 | -0.4 |
| Aug 11 | 11.6 | 1.4 | 13.2 | 1.4 | 10.4 | 1.4 | 10.0 | 0.8 | 12.5 | 0.8 | 11.6 | 0.8 | 18.7 | 0.6 |
| Sep 11 | 10.5 | 1.0 | 9.9 | 1.6 | 10.9 | 0.6 | 10.6 | 0.7 | 11.7 | 0.6 | 7.6 | 1.3 | 17.0 | 0.2 |
| Oct 11 | 11.0 | 1.4 | 11.7 | 1.6 | 10.4 | 1.3 | 10.4 | 1.4 | 11.7 | 1.0 | 6.5 | 0.8 | 15.4 | 0.4 |
| Nov 11 | 10.2 | 0.3 | 10.0 | 0.1 | 10.3 | 0.4 | 10.4 | 0.6 | 11.5 | 0.5 | 3.8 | 0.7 | 12.0 | -0.5 |
| Dec 11 | 9.7 | -0.7 | 9.5 | -2.2 | 9.9 | 0.4 | 10.1 | 0.4 | 10.5 | 0.3 | 3.0 | -2.0 | 8.3 | -1.3 |
| Jan 12 | 10.1 | 1.5 | 9.2 | 1.5 | 10.7 | 1.6 | 10.2 | 1.1 | 10.4 | 0.8 | 3.9 | 1.0 | 8.7 | 2.3 |
| Feb 12 | 11.0 | 0.3 | 10.5 | -0.7 | 11.5 | 1.0 | 10.6 | 0.7 | 10.7 | 0.5 | 5.2 | -0.1 | 7.2 | 0.6 |
| Mar 12 | 10.8 | 1.2 | 9.8 | 1.5 | 11.5 | 0.9 | 10.8 | 1.0 | 10.5 | 0.8 | 6.1 | 1.5 | 4.5 | 0.7 |
| Apr 12 | 11.3 | 1.8 | 10.7 | 2.2 | 11.6 | 1.6 | 10.8 | 1.4 | 11.0 | 1.3 | 7.5 | 1.7 | 3.8 | 1.8 |
| May 12 | 12.3 | 1.1 | 11.3 | 0.2 | 13.1 | 1.9 | 11.1 | 0.8 | 11.7 | 0.5 | 8.1 | -0.1 | 7.1 | 2.1 |
| Jun 12 | 11.3 | 0.0 ¹ | 10.3 | -0.2 | 12.0 | 0.2 | 11.4 | 0.7 | 11.1 | 0.5 | 9.7 | 1.4 | 6.4 | 0.0 ² |

*NFNE is non-food non-energy, ** SPI for quintile 1,
² Actual figure is -0.05, displayed in rounded figure

¹ Actual figure is 0.04, displayed in rounded figure

Table 1.1 : Period Average and YoY % Changes of Indices (Base 2007-08)

| Index | Averages July-June % Changes | | | June over June % Changes | | |
|-------|------------------------------|---------|---------|--------------------------|---------|---------|
| | 2011-12 | 2010-11 | 2009-10 | 2011-12 | 2010-11 | 2009-10 |
| CPI | 11.01 | 13.66 | 10.10 | 11.26 | 13.31 | 11.76 |
| SPI | 7.08 | 16.57 | 12.94 | 9.67 | 13.01 | 14.46 |
| WPI | 10.42 | 21.25 | 13.85 | 6.40 | 22.77 | 18.28 |

Figure 1: CPI Inflation YoY, Special Indices

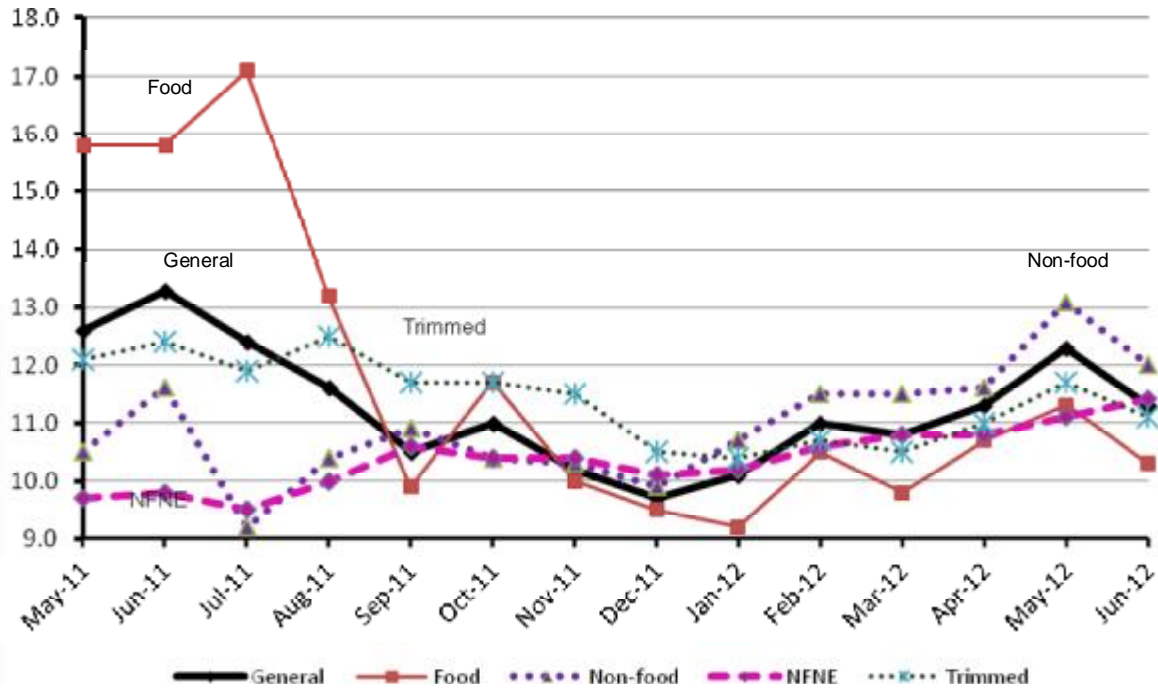
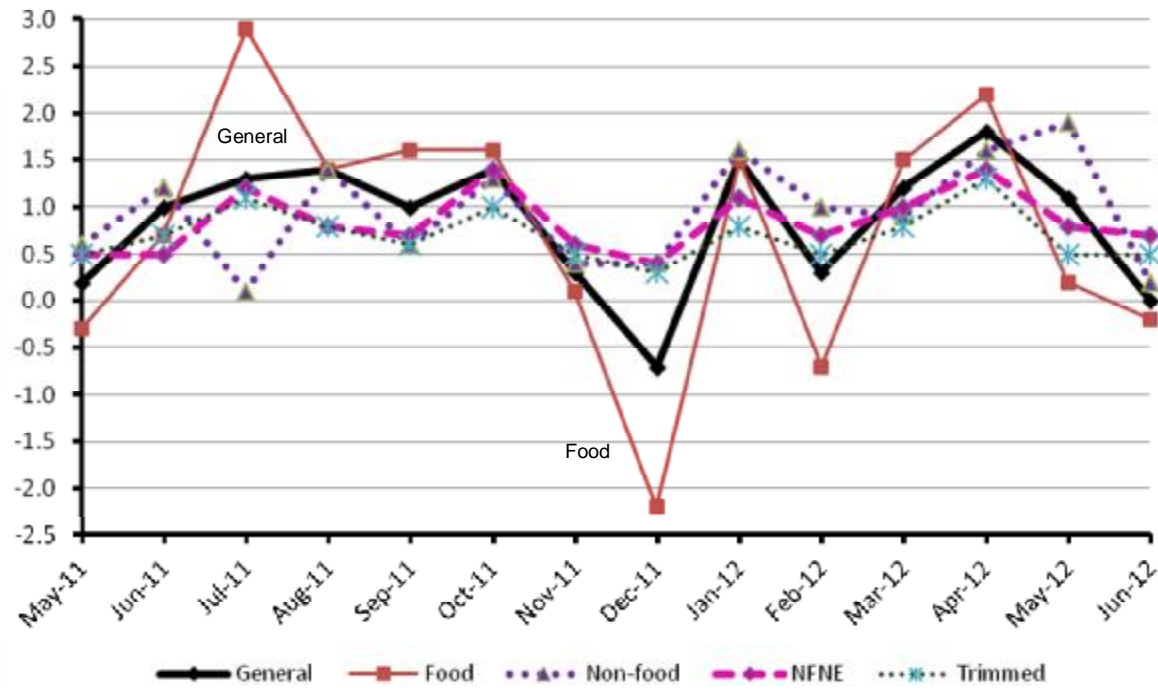


Figure 2: CPI Inflation MoM, Special Indices



II. Consumer Price Index (CPI)

The Consumer Price Index of June, 2012 has increased by 0.04% over May, 2012 and increased by 11.26% over corresponding month of last year.

Table 2 : Consumer Price Index by Group of Commodities and Services (Base 2007-08)

| No | Group | Group Weight (%) | Indices | | | % Change Jun 2012 over | | Impact (Adjusted) (In % points) Jun 2012 over | |
|-----|----------------------------------------------|------------------|---------------|---------------|---------------|------------------------|--------------|-----------------------------------------------|-------------|
| | | | Jun 2012 | May 2012 | Jun 2011 | May 2012 | Jun 2011 | May 2012 | June 2011 |
| | General | 100.00 | 169.99 | 169.93 | 152.78 | 0.04 | 11.26 | 0.04 | 11.26 |
| 1. | Food & Non-alcoholic Bev. | 34.83 | 187.05 | 188.29 | 170.14 | -0.66 | 9.94 | -0.11 | 3.45 |
| | <i>Non-perishable Food Items</i> | <i>29.84</i> | <i>188.76</i> | <i>187.68</i> | <i>172.13</i> | <i>0.58</i> | <i>9.66</i> | <i>0.08</i> | <i>2.87</i> |
| | <i>Perishable Food Items</i> | <i>4.99</i> | <i>176.84</i> | <i>191.96</i> | <i>158.28</i> | <i>-7.88</i> | <i>11.73</i> | <i>-0.19</i> | <i>0.58</i> |
| 2. | Alcoholic Bev. & Tobacco | 1.41 | 188.05 | 169.22 | 158.40 | 11.13 | 18.72 | 0.07 | 0.26 |
| 3. | Clothing & Footwear | 7.57 | 164.08 | 163.22 | 142.15 | 0.53 | 15.43 | 0.02 | 1.16 |
| 4. | Housing, Water, Electricity, Gas & Fuels | 29.41 | 153.35 | 153.27 | 138.47 | 0.05 | 10.75 | 0.01 | 3.14 |
| 5. | Furnishing & Household Equipment Maintenance | 4.21 | 173.20 | 171.52 | 141.67 | 0.98 | 22.26 | 0.02 | 0.93 |
| 6. | Health | 2.19 | 147.42 | 144.07 | 129.03 | 2.33 | 14.25 | 0.02 | 0.31 |
| 7. | Transport | 7.20 | 182.98 | 185.93 | 168.11 | -1.59 | 8.85 | -0.05 | 0.63 |
| 8. | Communication | 3.22 | 123.62 | 122.38 | 123.70 | 1.01 | -0.06 | 0.02 | 0.00 |
| 9. | Recreation & Culture | 2.03 | 164.37 | 163.95 | 138.45 | 0.26 | 18.72 | 0.00 | 0.38 |
| 10. | Education | 3.94 | 152.28 | 151.31 | 136.56 | 0.64 | 11.51 | 0.01 | 0.45 |
| 11. | Restaurants & Hotels | 1.23 | 195.10 | 193.79 | 175.62 | 0.68 | 11.09 | 0.00 | 0.14 |
| 12. | Miscellaneous | 2.76 | 190.51 | 188.15 | 165.45 | 1.25 | 15.15 | 0.02 | 0.42 |

Main contributors to month-on-month and year-on-year percentage changes are given below and detail is given in Annexure A.

1. **Month-on-month** Top few commodities which varied from previous month i.e. June 2012 over May 2012 are given below:-

Food Items Increased: Honey (4.49%), Potatoes (4.39%), Beverages (3.04%), Milk Fresh (2.64%), Milk Powder (2.05%), Cooking Oil (1.98%), Beans (1.74%), Tea (1.61%), Gur (1.29%) and Milk Products (1.27%).

Decreased: Eggs (12.76%), Fresh Fruits (12.67%), Chicken(9.70%), Fish (5.65%), Onions (5.56%), Fresh Vegetables (3.95%), Pulse Mash (Washed) (3.29%) and Tomatoes (2.83%).

Non-food Items Increased: Cigarettes (11.34%), Transport Services (3.13%), Utensils (3.10%), Medical Equipments (2.97%), Doctor (MBBS) Clinic Fee (2.68%), Motor Vehicles (2.32%), Medical Tests (2.21%), Drugs and Medicines (2.14%) and Construction Wage Rate (1.98%).

Decreased: Motor Fuel (6.73%) and Kerosene Oil (5.34%).

2. **Year-on-year** Top ten commodities which varied from previous year i.e. June 2012 over June 2011 are given below:-

Food Items Increased: Pulse Gram (55.75%), Besan (46.53%), Gram Whole (36.84%), Onions (36.73%), Fresh Fruits (30.07%), Condiments (21.34%), Honey (19.06%), beans (18.62%), Rice (17.51%) and Chicken (16.85%).

Decreased: Sugar (19.56%), Gur (13.48%), Pulse Moong (13.22%), Potatoes (12.06%), Pulse Mash (washed) (11.41%), Pulse Masoor (9.37%), Tomatoes (8.52%) and Fresh Vegetables (4.12%).

Non-food Items Increased: Motor Vehicle Tax (48.05%), Text Books (41.15%), Household Servant (39.99%), Gas (29.41%), Firewood Whole (24.00%), Utensils (23.38%), Doctor (MBBS) Clinic Fee (22.58%), Marriage Hall Charges (20.68%), Household Textiles (20.44%) and Motor Vehicle Accessories (19.82%).

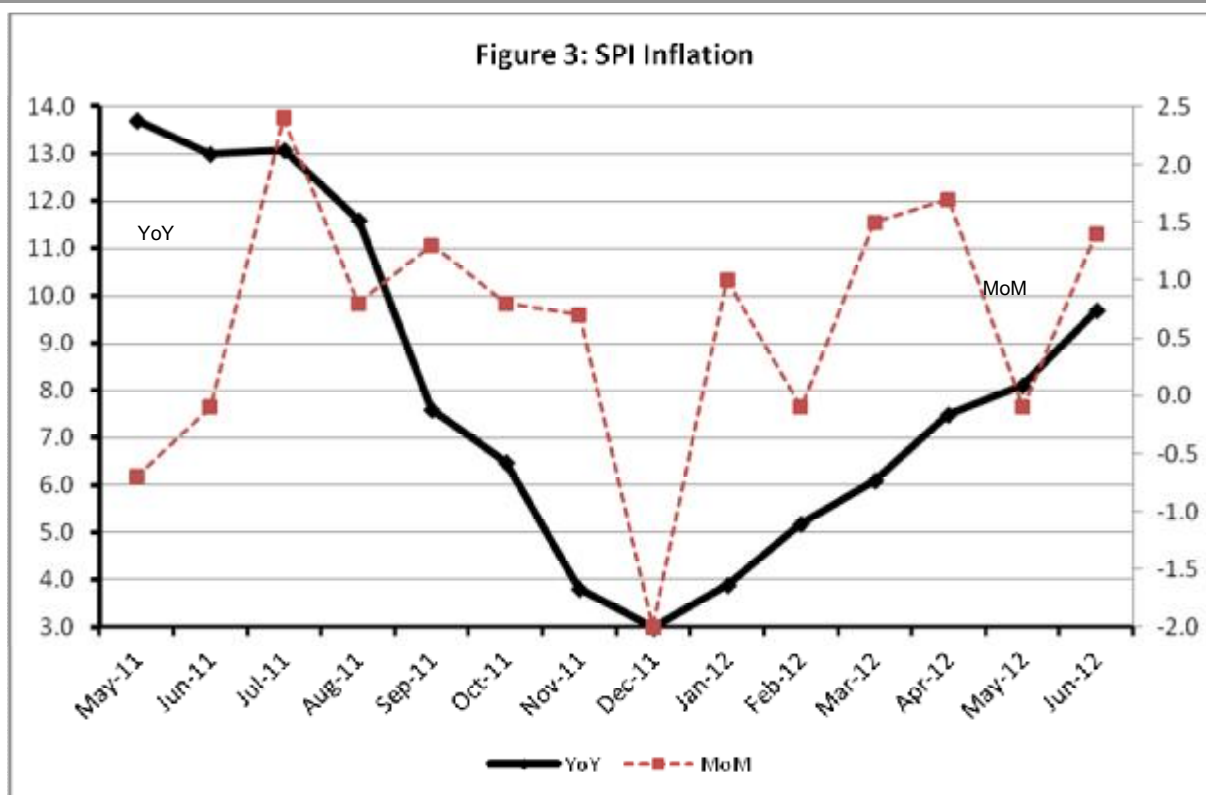
Decreased: Communication & Apparatus (0.24%).

III. Sensitive Price Indicator

Quintile-wise percentage changes YoY and MoM are given below in Table 3. The series from May 2011 to June 2012 is also graphed below in Figure 3.

Table 3 : Sensitive Price Indicator (Base 2007-08)

| Quintiles | Indices | | | % Change June 2012 over | |
|-----------|----------|----------|----------|-------------------------|----------|
| | Jun 2012 | May 2012 | Jun 2011 | May 2012 | Jun 2011 |
| 1 | 177.14 | 174.72 | 161.52 | 1.39 | 9.67 |
| 2 | 183.99 | 179.47 | 163.97 | 2.52 | 12.21 |
| 3 | 182.69 | 178.88 | 163.88 | 2.13 | 11.48 |
| 4 | 190.50 | 187.24 | 170.14 | 1.74 | 11.97 |
| 5 | 195.71 | 193.03 | 174.03 | 1.39 | 12.46 |
| Combined | 188.14 | 184.88 | 168.09 | 1.76 | 11.93 |



IV. Wholesale Price Index

The Wholesale Price Index for June 2012 decreased by 0.05% over May 2012. It increased by 6.40% over the corresponding month of the last year. YoY and MoM movements, from May 2011 to June 2012 are also graphed below in Figure 4.

Table 4 : Wholesale Price Index by Group of Commodities (Base 2007-08)

| No. | Group | Group Weight (%) | Indices | | | % Change June 2012 over | | Impact (Adjusted) (in %age points) Jun 2012 over | |
|-----|--------------------------------------------------------------------------|------------------|----------|----------|----------|-------------------------|----------|--------------------------------------------------|----------|
| | | | Jun 2012 | May 2012 | Jun 2011 | May 2012 | Jun 2011 | May 2012 | Jun 2011 |
| | | | | | | | | | |
| | General | 100.00 | 189.37 | 189.46 | 177.98 | -0.05 | 6.40 | -0.05 | 6.40 |
| 1. | Agriculture, Forestry & Fishery Products | 25.77 | 189.25 | 185.78 | 192.88 | 1.87 | -1.88 | -0.10 | 0.55 |
| 2. | Ores & Minerals, Electricity, Gas & Water | 12.04 | 215.23 | 214.79 | 161.94 | 0.20 | 32.91 | -0.01 | 2.88 |
| 3. | Food Products, Beverages & Tobacco, Textiles, Apparel & Leather Products | 31.11 | 180.94 | 179.06 | 177.71 | 1.05 | 1.82 | -0.07 | 0.85 |
| | i. Food Products, Bev. & Tobacco | 20.07 | 186.43 | 181.46 | 174.58 | 2.74 | 6.79 | -0.11 | 1.11 |
| | ii. Textiles and Apparel | 10.33 | 174.56 | 178.57 | 188.50 | -2.25 | -7.40 | 0.04 | -0.30 |
| | iii. Leather Products | 0.71 | 118.56 | 118.56 | 109.33 | 0.00 | 8.44 | 0.00 | 0.04 |
| 4. | Other Transportable Goods except Metal Products, Machinery & Equipments | 22.37 | 199.83 | 207.39 | 182.86 | -3.65 | 9.28 | 0.13 | 1.56 |
| 5. | Metal Products, Machinery & Equipments | 8.72 | 157.22 | 156.46 | 144.53 | 0.49 | 8.78 | -0.01 | 0.56 |

Main contributors to month-on-month and year-on-year percentage changes are given below and detail is given in Annexure B.

1. **Month-on-month** Top few commodities which varied from previous month i.e. June 2012 over May 2012 are given below:-

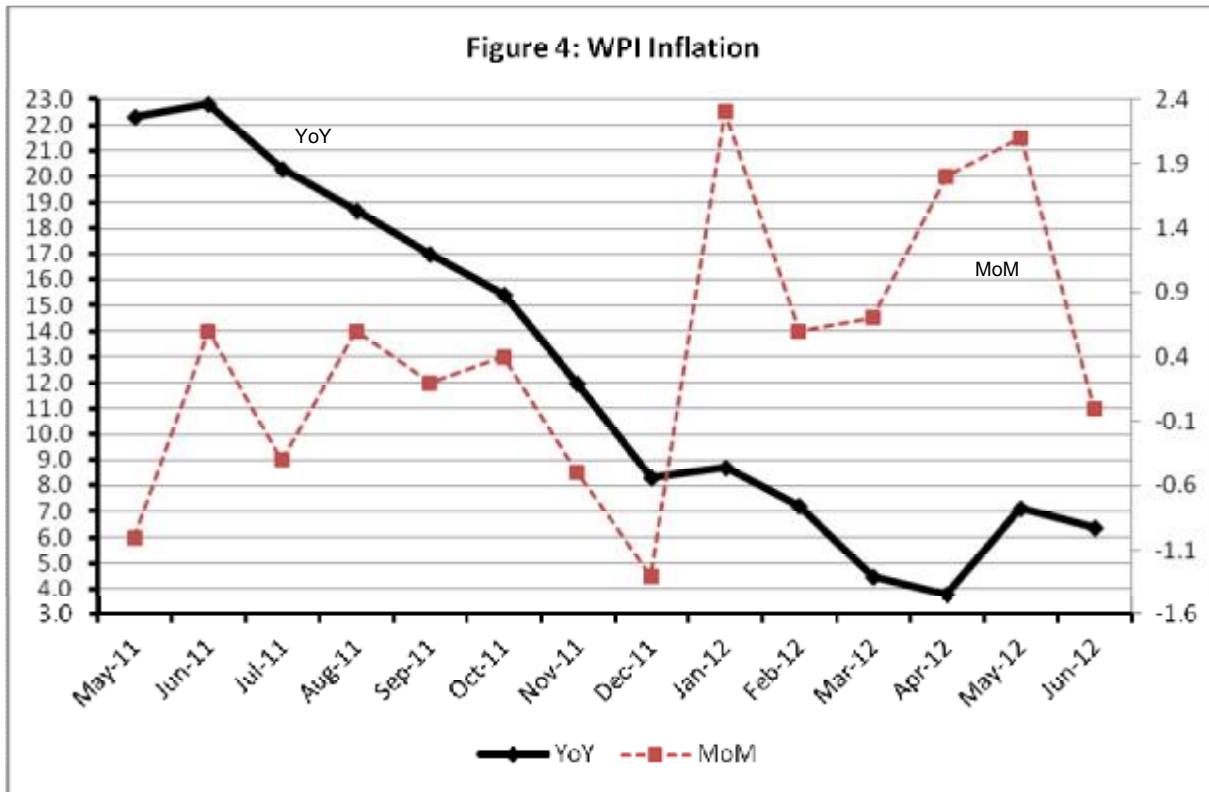
Increased: Tobacco products (18.74%), Fibre Crops (8.58%), printing Paper (8.4%), Medicines (5.76%), Edible Roots/Potatoes (5.69%), Poultry (5.54%), Processed Liquid Milk (4.79%), Bed Sheets (3.97%), Chuff Cutter (3.17%), Raw Milk (2.82%), Dairy Products (2.78%), Glass Sheets (2.71%) and Sugar Refined (2.22%).

Decreased: Eggs (13.56%), Vegetables (13.45%), Kerosene Oil (8.55%), Motor Spirit (8.34%), Furnace Oil (7.90%), Diesel (6.53%), Sorghum/Jowar (5.42%), Cotton Yarn (4.32%) and Synthetic Carpets (2.94%).

2. **Year-on-year** Top ten commodities which varied from previous year i.e. June 2012 over June 2011 are given below:-

Increased: Other Cereal Flour (59.11%), Fresh Fruits (55.48%), Coal not Agglomerated (53.13%), Spices (48.46%), Printing Paper (39.90%), Electrical Energy (32.45%), Natural Gas Liquefied (31.37%), Paints and Varnishes (28.92%), Dairy Products (26.66%) and Footwears (26.63%).

Decreased: Fiber Crops (34.02%), Edible Roots/Potatoes (24.59%), Sugar Refined (21.01%), Stimulant and Spice Crops (18.19%), Cotton Yarn (17.61%), Oil Cakes (14.59%), Blendid Yarn (11.65%), Cotton Seeds (10.58%), Milk and Cream in Solid Form (9.60%) and Synthetic Carpets (7.31%).



Annexure A: Consumer Price Index Numbers by Commodity Groups & Commodities (2007 - 2008 = 100)

| Item and Specification | Weight | Index Numbers | | | % Change in Jun 2012 Over | | | |
|-------------------------------------------|----------------|---------------|---------------|---------------|---------------------------|--------------|----------|--------------|
| | | Jun 2012 | May 2012 | Jun 2011 | May 2012 | Jun 2011 | | |
| General | 100.000 | 169.99 | 169.93 | 152.78 | + | 0.04 | + | 11.26 |
| Food & Non-alcoholic Beverages | 34.8343 | 187.05 | 188.29 | 170.14 | - | 0.66 | + | 9.94 |
| 01 Wheat | 0.3477 | 158.74 | 158.80 | 145.69 | - | 0.04 | + | 8.96 |
| 02 Wheat Flour | 4.1648 | 166.45 | 166.09 | 156.00 | + | 0.22 | + | 6.70 |
| 03 Wheat Product | 0.0959 | 162.86 | 164.11 | 157.18 | - | 0.76 | + | 3.61 |
| 04 Besan | 0.1500 | 231.58 | 233.03 | 158.04 | - | 0.62 | + | 46.53 |
| 05 Rice | 1.5821 | 166.43 | 165.29 | 141.63 | + | 0.69 | + | 17.51 |
| 06 Cereals | 0.1563 | 193.80 | 193.20 | 176.31 | + | 0.31 | + | 9.92 |
| 07 Bakery & Confectionary | 1.1550 | 169.62 | 168.77 | 155.26 | + | 0.50 | + | 9.25 |
| 08 Nimco | 0.4574 | 190.60 | 193.14 | 168.95 | - | 1.32 | + | 12.81 |
| 09 Meat | 2.4303 | 214.75 | 213.99 | 188.19 | + | 0.36 | + | 14.11 |
| 10 Chicken | 1.3596 | 182.90 | 202.55 | 156.52 | - | 9.70 | + | 16.85 |
| 11 Fish | 0.2970 | 187.13 | 198.34 | 163.92 | - | 5.65 | + | 14.16 |
| 12 Milk Fresh | 6.6800 | 209.46 | 204.07 | 184.89 | + | 2.64 | + | 13.29 |
| 13 Milk Products | 0.6338 | 204.19 | 201.63 | 179.39 | + | 1.27 | + | 13.82 |
| 14 Milk Powder | 0.1129 | 175.97 | 172.44 | 152.46 | + | 2.05 | + | 15.42 |
| 15 Eggs | 0.4555 | 149.61 | 171.49 | 140.59 | - | 12.76 | + | 6.42 |
| 16 Mustard Oil | 0.0952 | 158.54 | 159.53 | 144.34 | - | 0.62 | + | 9.84 |
| 17 Cooking Oil | 1.7538 | 157.85 | 154.79 | 144.42 | + | 1.98 | + | 9.30 |
| 18 Vegetable Ghee | 2.0714 | 164.96 | 163.69 | 155.99 | + | 0.78 | + | 5.75 |
| 19 Dry Fruits | 0.2543 | 196.87 | 200.77 | 179.10 | - | 1.94 | + | 9.92 |
| 20 Fresh Fruits | 1.8649 | 232.20 | 265.88 | 178.52 | - | 12.67 | + | 30.07 |
| 21 Pulse Masoor | 0.2712 | 145.26 | 146.82 | 160.28 | - | 1.06 | - | 9.37 |
| 22 Pulse Moong | 0.2336 | 231.97 | 238.26 | 267.30 | - | 2.64 | - | 13.22 |
| 23 Pulse Mash (Washed) | 0.2098 | 197.41 | 204.12 | 222.83 | - | 3.29 | - | 11.41 |
| 24 Pulse Gram | 0.2361 | 240.97 | 243.09 | 154.72 | - | 0.87 | + | 55.75 |
| 25 Gram Whole | 0.1616 | 231.05 | 232.76 | 168.85 | - | 0.73 | + | 36.84 |
| 26 Beans | 0.0269 | 202.24 | 198.78 | 170.49 | + | 1.74 | + | 18.62 |
| 27 Potatoes | 0.4699 | 169.38 | 162.26 | 192.60 | + | 4.39 | - | 12.06 |
| 28 Onion | 0.5340 | 127.62 | 135.14 | 93.34 | - | 5.56 | + | 36.73 |
| 29 Tomatoes | 0.4419 | 79.62 | 81.94 | 87.04 | - | 2.83 | - | 8.52 |
| 30 Fresh Vegetables | 1.6802 | 158.70 | 165.22 | 165.52 | - | 3.95 | - | 4.12 |
| 31 Sugar | 1.0445 | 198.64 | 197.07 | 246.93 | + | 0.80 | - | 19.56 |
| 32 Gur | 0.0220 | 219.21 | 216.41 | 253.35 | + | 1.29 | - | 13.48 |
| 33 Honey | 0.0446 | 232.36 | 222.38 | 195.17 | + | 4.49 | + | 19.06 |
| 34 SweetMeat | 0.2483 | 200.28 | 201.63 | 180.81 | - | 0.67 | + | 10.77 |
| 35 Beverages | 1.1990 | 168.70 | 163.72 | 154.74 | + | 3.04 | + | 9.02 |
| 36 Jam, Tomato Ketchup & Pickles | 0.2454 | 172.20 | 172.01 | 164.50 | + | 0.11 | + | 4.68 |
| 37 Condiments | 0.2656 | 209.67 | 211.56 | 172.79 | - | 0.89 | + | 21.34 |
| 38 Spices | 0.5441 | 268.44 | 272.62 | 235.39 | - | 1.53 | + | 14.04 |
| 39 Tea | 0.8377 | 212.34 | 208.98 | 199.49 | + | 1.61 | + | 6.44 |
| Alcoholic Beverages, Tobacco | 1.4135 | 188.05 | 169.22 | 158.40 | + | 11.13 | + | 18.72 |
| 40 Cigarettes | 1.3906 | 188.26 | 169.08 | 158.43 | + | 11.34 | + | 18.83 |
| 41 Betel Leaves & Nuts | 0.0229 | 175.17 | 177.91 | 156.23 | - | 1.54 | + | 12.12 |
| Clothing & Footwear | 7.5708 | 164.08 | 163.22 | 142.15 | + | 0.53 | + | 15.43 |
| 42 Cotton Cloth | 1.7286 | 153.57 | 152.16 | 141.62 | + | 0.93 | + | 8.44 |
| 43 Woolen Cloth | 0.8759 | 182.08 | 183.68 | 152.86 | - | 0.87 | + | 19.12 |
| 44 Readymade Garments | 0.9739 | 163.15 | 160.68 | 138.54 | + | 1.54 | + | 17.76 |
| 45 Woolen Readymade Garments | 0.3964 | 162.45 | 161.01 | 138.42 | + | 0.89 | + | 17.36 |
| 46 Hosiery | 0.5094 | 172.27 | 171.86 | 149.42 | + | 0.24 | + | 15.29 |
| 47 Dopatta | 0.4412 | 174.75 | 173.73 | 146.86 | + | 0.59 | + | 18.99 |
| 48 Cleaning and Laundry | 0.2110 | 180.05 | 177.51 | 151.65 | + | 1.43 | + | 18.73 |
| 49 Tailoring | 0.8840 | 193.31 | 191.94 | 164.31 | + | 0.71 | + | 17.65 |
| 50 Footwear | 1.5504 | 142.07 | 142.00 | 122.27 | + | 0.05 | + | 16.19 |

Annexure A: Consumer Price Index Numbers by Commodity Groups & Commodities (2007 - 2008 = 100)

| Item and Specification | Weight | Index Numbers | | | % Change in Jun 2012 Over | | |
|--------------------------------------------|----------------|---------------|---------------|---------------|---------------------------|-------------|-----------------------|
| | | Jun 2012 | May 2012 | Jun 2011 | May 2012 | Jun 2011 | |
| Housing, Water, Elec., Gas, Other | 29.4149 | 153.35 | 153.27 | 138.47 | + | 0.05 | + 10.75 |
| 51 House Rent | 21.8149 | 135.02 | 135.02 | 126.67 | + | 0.00 | + 6.59 |
| 52 Construction Input Items | 0.5623 | 196.25 | 194.21 | 168.77 | + | 1.05 | + 16.28 |
| 53 Construction Wage Rates | 0.3331 | 166.44 | 163.21 | 145.67 | + | 1.98 | + 14.26 |
| 54 Water Supply | 0.4971 | 133.23 | 133.23 | 120.34 | + | 0.00 | + 10.71 |
| 55 Electricity | 4.3985 | 196.37 | 196.37 | 168.71 | + | 0.00 | + 16.39 |
| 56 Gas | 1.5756 | 264.42 | 264.42 | 204.32 | + | 0.00 | + 29.41 |
| 57 Kerosene Oil | 0.0057 | 253.30 | 267.60 | 223.00 | - | 5.34 | + 13.59 |
| 58 Firewood Whole | 0.2277 | 225.29 | 225.28 | 181.69 | + | 0.00 | + 24.00 |
| Furnished H.Hold Equip. & House | 4.2082 | 173.20 | 171.52 | 141.67 | + | 0.98 | + 22.26 |
| 59 Furniture | 0.3315 | 162.55 | 161.27 | 139.11 | + | 0.79 | + 16.85 |
| 60 Household Textiles | 0.6489 | 169.15 | 167.77 | 140.44 | + | 0.82 | + 20.44 |
| 61 Household Equipment | 0.5936 | 154.82 | 153.84 | 142.30 | + | 0.64 | + 8.80 |
| 62 Utensils | 0.3212 | 171.16 | 166.02 | 138.73 | + | 3.10 | + 23.38 |
| 63 Plastic Products | 0.2547 | 172.84 | 171.46 | 151.79 | + | 0.80 | + 13.87 |
| 64 Washing Soaps & Detergents | 0.7893 | 189.05 | 187.61 | 158.59 | + | 0.77 | + 19.21 |
| 65 Sewing Needle & Dr Cell | 0.1496 | 148.03 | 145.24 | 130.20 | + | 1.92 | + 13.69 |
| 66 Household Servant | 1.0432 | 180.92 | 179.61 | 129.24 | + | 0.73 | + 39.99 |
| 67 Marriage Hall Charges | 0.0762 | 186.63 | 183.23 | 154.65 | + | 1.86 | + 20.68 |
| Health | 2.1868 | 147.42 | 144.07 | 129.03 | + | 2.33 | + 14.25 |
| 68 Drugs & Medicines | 1.2667 | 131.03 | 128.29 | 120.00 | + | 2.14 | + 9.19 |
| 69 Medical Equipments | 0.0080 | 188.56 | 183.13 | 163.48 | + | 2.97 | + 15.34 |
| 70 Doctor (MBBS) Clinic Fee | 0.5904 | 180.36 | 175.66 | 147.14 | + | 2.68 | + 22.58 |
| 71 Medical Tests | 0.3217 | 150.49 | 147.23 | 130.45 | + | 2.21 | + 15.36 |
| Transport | 7.2023 | 182.98 | 185.93 | 168.11 | - | 1.59 | + 8.85 |
| 72 Motor Vehicles | 0.6630 | 148.81 | 145.44 | 136.92 | + | 2.32 | + 8.68 |
| 73 Motor Vehicle Accessories | 0.2439 | 201.80 | 200.36 | 168.42 | + | 0.72 | + 19.82 |
| 74 Motor Fuel | 3.0269 | 180.20 | 193.20 | 176.43 | - | 6.73 | + 2.14 |
| 75 Mechanical Service | 0.4552 | 175.42 | 176.50 | 147.33 | - | 0.61 | + 19.07 |
| 76 Motor Vehicle Tax | 0.1099 | 152.02 | 152.02 | 102.68 | + | 0.00 | + 48.05 |
| 77 Transport Services | 2.7034 | 195.30 | 189.38 | 172.58 | + | 3.13 | + 13.16 |
| Communication | 3.2198 | 123.62 | 122.38 | 123.70 | + | 1.01 | - 0.06 |
| 78 Postal Services | 0.0662 | 171.37 | 168.66 | 161.84 | + | 1.61 | + 5.89 |
| 79 Communication & Apparatus | 3.1536 | 122.61 | 121.41 | 122.90 | + | 0.99 | - 0.24 |
| Recreation & Culture | 2.0227 | 164.37 | 163.95 | 138.45 | + | 0.26 | + 18.72 |
| 80 Recreation & Culture | 0.8634 | 121.37 | 121.05 | 115.30 | + | 0.26 | + 5.26 |
| 81 Text Books | 0.5706 | 230.22 | 229.88 | 163.10 | + | 0.15 | + 41.15 |
| 82 Newspapers | 0.1934 | 149.97 | 149.97 | 137.66 | + | 0.00 | + 8.94 |
| 83 Stationery | 0.3953 | 170.26 | 169.32 | 153.79 | + | 0.56 | + 10.71 |
| Education | 3.9431 | 152.28 | 151.31 | 136.56 | + | 0.64 | + 11.51 |
| 84 Education | 3.9431 | 152.28 | 151.31 | 136.56 | + | 0.64 | + 11.51 |
| Restaurants & Hotels | 1.2286 | 195.10 | 193.79 | 175.62 | + | 0.68 | + 11.09 |
| 85 Readymade Food | 1.2286 | 195.10 | 193.79 | 175.62 | + | 0.68 | + 11.09 |
| Miscellaneous Goods & Services | 2.7550 | 190.51 | 188.15 | 165.45 | + | 1.25 | + 15.15 |
| 86 Personal Care | 1.4935 | 174.03 | 171.42 | 150.19 | + | 1.52 | + 15.87 |
| 87 Cosmetics | 0.3853 | 147.22 | 146.40 | 130.71 | + | 0.56 | + 12.63 |
| 88 Blades | 0.0322 | 168.23 | 169.53 | 149.97 | - | 0.77 | + 12.18 |
| 89 Personal Equipments | 0.8440 | 240.29 | 237.54 | 208.89 | + | 1.16 | + 15.03 |

Annexure B: Wholesale Price Indices by Major Groups and Commodities

(2007 - 2008 = 100)

| Item and Specification | Weight | Index Numbers | | | % Change in Jun 2012 Over | | | |
|----------------------------------------|-----------------|---------------|---------------|---------------|---------------------------|-------------|----------|--------------|
| | | Jun 2012 | May 2012 | Jun 2011 | May 2012 | Jun 2012 | Jun 2011 | |
| General | 100.0000 | 189.37 | 189.46 | 177.98 | - | 0.05 | + | 6.40 |
| Agriculture Forestry & | 25.7674 | 189.25 | 185.78 | 192.88 | + | 1.87 | - | 1.88 |
| 001 Wheat | 0.6297 | 163.58 | 163.65 | 151.12 | - | 0.04 | + | 8.25 |
| 002 Maize | 0.6764 | 168.35 | 168.27 | 169.04 | + | 0.05 | - | 0.41 |
| 003 Rice | 2.4413 | 156.72 | 154.82 | 134.34 | + | 1.23 | + | 16.66 |
| 004 Sorghum/Jowar | 0.0214 | 206.28 | 218.11 | 186.65 | - | 5.42 | + | 10.52 |
| 005 Millet/Bajra | 0.0374 | 164.48 | 163.10 | 158.38 | + | 0.85 | + | 3.85 |
| 006 Vegetables | 1.2441 | 149.26 | 172.46 | 146.78 | - | 13.45 | + | 1.69 |
| 007 Fresh Fruits | 1.5144 | 270.29 | 272.26 | 173.84 | - | 0.72 | + | 55.48 |
| 008 Dry Fruits | 0.2478 | 171.61 | 172.32 | 180.06 | - | 0.41 | - | 4.69 |
| 009 Cotton Seeds | 1.1511 | 176.68 | 173.84 | 197.58 | + | 1.63 | - | 10.58 |
| 010 Other Oil Seeds | 0.0722 | 171.79 | 171.79 | 156.79 | + | 0.00 | + | 9.57 |
| 011 Edible Roots/Potatoes | 0.2540 | 159.37 | 150.79 | 211.35 | + | 5.69 | - | 24.59 |
| 012 Stimulant and Spice Crops | 0.1634 | 166.94 | 165.35 | 204.06 | + | 0.96 | - | 18.19 |
| 013 Pulses | 0.4901 | 223.78 | 228.41 | 194.57 | - | 2.03 | + | 15.01 |
| 014 Sugar Crops | 1.0725 | 267.92 | 267.92 | 251.58 | + | 0.00 | + | 6.49 |
| 015 Fibre Crops | 5.3169 | 185.62 | 170.95 | 281.32 | + | 8.58 | - | 34.02 |
| 016 Unmanufactured Tobacco | 0.0742 | 166.81 | 166.81 | 167.68 | + | 0.00 | - | 0.52 |
| 017 Poultry | 0.5633 | 187.34 | 177.51 | 168.50 | + | 5.54 | + | 11.18 |
| 018 Raw Milk from Bovine Animals | 7.0279 | 202.77 | 197.20 | 181.86 | + | 2.82 | + | 11.50 |
| 019 Eggs | 0.5034 | 143.95 | 166.54 | 141.91 | - | 13.56 | + | 1.44 |
| 020 Raw Animal Materials/Wool | 0.0351 | 136.50 | 136.50 | 132.37 | + | 0.00 | + | 3.12 |
| 021 Hides and Fur Skins, Raw | 0.4834 | 137.42 | 138.05 | 116.56 | - | 0.46 | + | 17.90 |
| 022 Fuel Wood in Logs | 0.0179 | 203.50 | 203.06 | 176.84 | + | 0.22 | + | 15.08 |
| 023 Fish Live Fresh or Chilled | 1.7295 | 156.79 | 155.33 | 129.75 | + | 0.94 | + | 20.84 |
| Ores/Minerals, Elec., Gas & | 12.0389 | 215.23 | 214.79 | 161.94 | + | 0.20 | + | 32.91 |
| 024 Coal not Agglomerated | 0.7508 | 192.16 | 188.24 | 125.49 | + | 2.08 | + | 53.13 |
| 025 Natural Gas Liquified | 5.7385 | 208.33 | 207.95 | 158.58 | + | 0.18 | + | 31.37 |
| 026 Salt and Pure Sodium Chloride | 0.0584 | 168.19 | 165.87 | 137.81 | + | 1.40 | + | 22.04 |
| 027 Electrical Energy | 5.4912 | 226.10 | 226.10 | 170.70 | + | 0.00 | + | 32.45 |
| Food, Beverages, Tobacco, Te | 31.1122 | 180.94 | 179.06 | 177.71 | + | 1.05 | + | 1.82 |
| Food Products, Beverages | 20.0718 | 186.43 | 181.46 | 174.58 | + | 2.74 | + | 6.79 |
| 028 Meat of Animals | 3.4559 | 225.25 | 224.02 | 193.17 | + | 0.55 | + | 16.61 |
| 029 Vegetables and Fruit Juice | 0.0058 | 179.40 | 178.36 | 165.69 | + | 0.58 | + | 8.27 |
| 030 Dried Fruits and Nuts | 0.1733 | 201.37 | 198.46 | 187.80 | + | 1.47 | + | 7.23 |
| 031 Fruit Juices | 0.3880 | 158.11 | 158.18 | 151.44 | - | 0.04 | + | 4.40 |
| 032 Vegetable Oils Refined | 1.9242 | 157.10 | 156.41 | 152.26 | + | 0.44 | + | 3.18 |
| 033 Vegetable Ghee | 1.5632 | 145.59 | 145.16 | 140.12 | + | 0.30 | + | 3.90 |
| 034 Oil Cakes | 0.9611 | 140.07 | 139.41 | 164.00 | + | 0.47 | - | 14.59 |
| 035 Processed Liquid Milk | 4.4437 | 200.35 | 191.19 | 170.46 | + | 4.79 | + | 17.53 |
| 036 Milk and Cream in Solid Form | 0.0316 | 167.32 | 167.14 | 185.09 | + | 0.11 | - | 9.60 |
| 037 Ice Cream | 0.0047 | 161.68 | 161.68 | 153.19 | + | 0.00 | + | 5.54 |
| 038 Dairy Products N.E.C | 0.0117 | 204.27 | 198.75 | 161.27 | + | 2.78 | + | 26.66 |
| 039 Wheat Flour | 2.3034 | 153.81 | 153.57 | 144.73 | + | 0.16 | + | 6.27 |
| 040 Other Cereal Flour | 0.0604 | 215.04 | 214.25 | 135.15 | + | 0.37 | + | 59.11 |
| 041 Sugar Refined | 1.7975 | 204.92 | 200.47 | 259.41 | + | 2.22 | - | 21.01 |
| 042 Chocolate | 0.0139 | 100.26 | 100.26 | 99.45 | + | 0.00 | + | 0.81 |
| 043 Sugar Confectionary | 0.0738 | 100.40 | 100.40 | 100.00 | + | 0.00 | + | 0.40 |
| 044 Coffee and Tea | 0.7303 | 197.17 | 196.69 | 187.41 | + | 0.24 | + | 5.21 |
| 045 Spices | 0.1449 | 303.27 | 303.53 | 204.28 | - | 0.09 | + | 48.46 |
| 046 Other Food Products | 0.0336 | 318.54 | 318.54 | 288.39 | + | 0.00 | + | 10.45 |
| 047 Mineral Water | 0.0207 | 165.88 | 165.88 | 158.83 | + | 0.00 | + | 4.44 |
| 048 Beverages | 0.6303 | 135.23 | 135.21 | 129.49 | + | 0.01 | + | 4.43 |
| 049 Tobacco Products | 1.2998 | 208.80 | 175.85 | 177.72 | + | 18.74 | + | 17.49 |
| Textiles & Apparels | 10.3289 | 174.56 | 178.57 | 188.50 | - | 2.25 | - | 7.40 |
| 050 Cotton Yarn | 5.2491 | 191.40 | 200.04 | 232.32 | - | 4.32 | - | 17.61 |
| 051 Nylon Yarn | 0.1719 | 179.55 | 183.81 | 192.51 | - | 2.32 | - | 6.73 |
| 052 Blended Yarn | 0.1689 | 185.75 | 187.07 | 210.24 | - | 0.71 | - | 11.65 |
| 053 Woven Fabrics | 0.0128 | 171.55 | 171.55 | 144.44 | + | 0.00 | + | 18.77 |
| 054 Cotton Fabrics | 0.6343 | 177.38 | 175.89 | 155.88 | + | 0.85 | + | 13.79 |
| 055 Other Fabrics | 1.1016 | 166.92 | 165.23 | 142.20 | + | 1.02 | + | 17.38 |
| 056 Silk and Reyon Fabrics | 0.7350 | 142.56 | 141.30 | 136.13 | + | 0.89 | + | 4.72 |
| 057 Towels | 0.1235 | 189.19 | 189.19 | 163.98 | + | 0.00 | + | 15.37 |

Annexure B: Wholesale Price Indices by Major Groups and Commodities

(2007 - 2008 = 100)

| Item and Specification | Weight | Index Numbers | | | % Change in Jun 2012 Over | | | |
|---------------------------------------|----------------|---------------|---------------|---------------|---------------------------|-------------|----------|-------------|
| | | Jun 2012 | May 2012 | Jun 2011 | May 2012 | Jun 2012 | Jun 2011 | |
| 058 Blankets | 0.0029 | 162.38 | 161.28 | 137.48 | + | 0.68 | + | 18.11 |
| 059 Bed Sheets | 0.0913 | 182.90 | 175.92 | 148.07 | + | 3.97 | + | 23.52 |
| 060 Quilts | 0.0019 | 147.05 | 147.05 | 137.32 | + | 0.00 | + | 7.09 |
| 061 Woolen Carpets | 0.0383 | 104.76 | 104.76 | 107.14 | + | 0.00 | - | 2.22 |
| 062 Synthetic Carpets | 0.0566 | 139.83 | 144.07 | 150.85 | - | 2.94 | - | 7.31 |
| 063 Hosiery Products | 0.8832 | 164.67 | 163.84 | 146.76 | + | 0.51 | + | 12.20 |
| 064 Readymade Garments | 1.0576 | 127.25 | 127.25 | 118.04 | + | 0.00 | + | 7.80 |
| Leather Products | 0.7115 | 118.56 | 118.56 | 109.33 | + | 0.00 | + | 8.44 |
| 065 Leather without Hair | 0.2973 | 109.83 | 109.83 | 107.45 | + | 0.00 | + | 2.21 |
| 066 Other Leather N.E.C | 0.2567 | 122.57 | 122.57 | 116.33 | + | 0.00 | + | 5.36 |
| 067 Footwears | 0.1575 | 128.50 | 128.50 | 101.48 | + | 0.00 | + | 26.63 |
| Other Transportable Goods | 22.3659 | 199.83 | 207.39 | 182.86 | - | 3.65 | + | 9.28 |
| 068 Timber | 0.0165 | 144.55 | 144.35 | 136.69 | + | 0.14 | + | 5.75 |
| 069 Printing Paper | 0.4279 | 153.92 | 141.99 | 110.02 | + | 8.40 | + | 39.90 |
| 070 Hard Board | 0.1579 | 166.67 | 168.75 | 135.42 | - | 1.23 | + | 23.08 |
| 071 Coke | 0.2797 | 163.45 | 163.45 | 155.28 | + | 0.00 | + | 5.26 |
| 072 Motor Spirit | 1.5336 | 160.04 | 174.61 | 146.45 | - | 8.34 | + | 9.28 |
| 073 Diesel Oil | 5.2664 | 245.87 | 263.04 | 235.23 | - | 6.53 | + | 4.52 |
| 074 Kerosine Oil | 0.2151 | 243.74 | 266.52 | 225.66 | - | 8.55 | + | 8.01 |
| 075 Furnace Oil | 3.2664 | 194.27 | 210.94 | 189.70 | - | 7.90 | + | 2.41 |
| 076 Mobil Oil | 0.7114 | 179.12 | 181.11 | 165.14 | - | 1.10 | + | 8.47 |
| 077 Chemicals | 1.7720 | 145.80 | 145.79 | 136.83 | + | 0.01 | + | 6.56 |
| 078 Dyeing Material | 0.1539 | 104.26 | 104.26 | 107.04 | + | 0.00 | - | 2.60 |
| 079 Fertilizers | 2.8657 | 263.70 | 268.05 | 220.32 | - | 1.62 | + | 19.69 |
| 080 Pesticides | 0.2763 | 167.27 | 165.53 | 156.72 | + | 1.05 | + | 6.73 |
| 081 Insecticides | 0.1276 | 118.26 | 121.64 | 126.99 | - | 2.78 | - | 6.87 |
| 082 Paints and Varnishes | 0.1916 | 215.37 | 211.83 | 167.06 | + | 1.67 | + | 28.92 |
| 083 Medicines | 1.1428 | 129.55 | 122.49 | 115.56 | + | 5.76 | + | 12.11 |
| 084 Soaps and Detergents | 0.8168 | 157.37 | 156.58 | 145.20 | + | 0.50 | + | 8.38 |
| 085 Auto Tyres | 0.2703 | 176.49 | 175.62 | 160.69 | + | 0.50 | + | 9.83 |
| 086 Plastic Products | 0.4550 | 188.26 | 185.12 | 161.08 | + | 1.70 | + | 16.87 |
| 087 Glass sheets | 0.2089 | 177.10 | 172.43 | 156.82 | + | 2.71 | + | 12.93 |
| 088 Other Glass Articles | 0.1635 | 217.98 | 222.06 | 198.78 | - | 1.84 | + | 9.66 |
| 089 Ceramics and Sanitary Fixture | 0.0244 | 146.66 | 144.28 | 131.02 | + | 1.65 | + | 11.94 |
| 090 Bricks, Blocks and Tiles | 0.1566 | 170.93 | 170.86 | 150.16 | + | 0.04 | + | 13.83 |
| 091 Cement | 1.8145 | 177.78 | 177.41 | 154.18 | + | 0.21 | + | 15.31 |
| 092 Bed Foam | 0.0006 | 131.50 | 131.00 | 120.83 | + | 0.38 | + | 8.83 |
| 093 Matches | 0.0505 | 122.82 | 122.82 | 112.26 | + | 0.00 | + | 9.41 |
| Metal Product, Machinery & | 8.7156 | 157.22 | 156.46 | 144.53 | + | 0.49 | + | 8.78 |
| 094 Pig Iron | 0.0593 | 128.97 | 128.97 | 128.97 | + | 0.00 | + | 0.00 |
| 095 Steel Bar and Sheets | 1.4022 | 139.13 | 136.32 | 127.76 | + | 2.06 | + | 8.90 |
| 096 Pipe Fittings | 0.0780 | 142.31 | 142.31 | 137.87 | + | 0.00 | + | 3.22 |
| 097 Steel Products | 0.3879 | 159.73 | 159.13 | 135.22 | + | 0.38 | + | 18.13 |
| 098 Engines and Motors | 0.0046 | 109.07 | 109.07 | 109.07 | + | 0.00 | + | 0.00 |
| 099 Vacuum Pumps | 0.0155 | 115.39 | 115.39 | 115.39 | + | 0.00 | + | 0.00 |
| 100 Air Conditioners | 0.0049 | 172.67 | 170.33 | 162.24 | + | 1.37 | + | 6.43 |
| 101 Cultivators | 0.0551 | 184.66 | 184.66 | 180.09 | + | 0.00 | + | 2.54 |
| 102 Chuff Cutter | 0.1293 | 138.54 | 134.28 | 131.08 | + | 3.17 | + | 5.69 |
| 103 Tractors | 0.0028 | 172.36 | 172.36 | 180.89 | + | 0.00 | - | 4.72 |
| 104 Lathe Machines | 0.0525 | 147.68 | 147.68 | 147.51 | + | 0.00 | + | 0.12 |
| 105 Concrete Mixture | 0.0107 | 138.83 | 138.83 | 138.83 | + | 0.00 | + | 0.00 |
| 106 Fridge,WashM,SewM,Fans,Iro | 1.1645 | 164.93 | 164.93 | 158.28 | + | 0.00 | + | 4.20 |
| 107 Electric Wires | 0.0912 | 165.49 | 165.49 | 152.07 | + | 0.00 | + | 8.82 |
| 108 Lighting Equipments | 1.4431 | 146.79 | 145.49 | 130.63 | + | 0.89 | + | 12.37 |
| 109 Radio and Television | 0.1843 | 132.73 | 132.73 | 127.86 | + | 0.00 | + | 3.81 |
| 110 Motor Vehicles | 0.0244 | 160.28 | 160.28 | 151.04 | + | 0.00 | + | 6.12 |
| 111 Motorcycles | 0.2570 | 124.02 | 124.02 | 120.78 | + | 0.00 | + | 2.68 |
| 112 Bicycles | 3.3483 | 171.52 | 171.52 | 156.80 | | 0.00 | + | 9.39 |