



Monthly Review on Price Indices



January, 2012
(Base 2007-08)

Government of Pakistan
Statistics Division
Pakistan Bureau of Statistics
Islamabad

I. Inflation in Brief

1. CPI inflation, General, increased by 10.1% on year-on-year basis in January 2012 as compared to 9.7% in the previous month and 13.9 % in January 2011. On month-on-month basis, it increased by 1.5% in January 2012 as compared to a decrease by 0.7% in the previous month and an increase by 1.2% in January 2011.
2. Core inflation measured by non-food non-energy CPI (Core NFNE) increased by 10.2% in January 2012 as compared to an increase of 10.1% in December 2011 (YoY) and by 9.8 % in January 2011. Core NFNE inflation on MoM basis increased by 1.1% in January 2012 as compared to 0.4% a month earlier and 1.0 %in January 2011.
3. Core inflation, measured by 20% weighted trimmed mean CPI (Core Trimmed) increased by 10.4% in January 2012 and by 10.5% in December 2011 (YoY) which increased by 12.1% in January 2011. Core Trimmed inflation has increased by 0.8% on MoM basis in January 2012 compared with 0.3% in December 2012 which increased by 1.1% in January 2011.
4. SPI inflation on YoY basis increased by 3.9% in January 2012 compared with 3.0% a month earlier and 17.3% in January 2011. On MoM basis, it increased by 1.0% in January 2012 as compared to a decrease by 2.0% a month earlier and an increase of 0.1% in January 2011.
5. WPI inflation on YoY basis increased to 8.7% in January 2012 compared with 8.3% a month earlier and 20.9% in January 2011. WPI inflation on MoM basis increased by 2.3% in January 2012 as compared to a decrease of 1.3% a month earlier and an increase of 1.9% in January 2011.
6. Figures 1 and 2 show graphically the data of Table 1. Table 1.1 shows “Period Average” and “YoY” percent changes in indices of three years.

Table 1: Inflation (%) (Base 2007-08)

| Period | CPI | | | | | | Core Inflation | | | | SPI** | | WPI | |
|--------|---------|------|------|------|----------|-----|----------------|-----|---------|-----|-------|------|------|------|
| | General | | Food | | Non-food | | NFNE* | | Trimmed | | YoY | MoM | YoY | MoM |
| | YoY | MoM | YoY | MoM | YoY | MoM | YoY | MoM | YoY | MoM | | | | |
| Dec 10 | 15.5 | -0.3 | 20.5 | -1.7 | 12.0 | 0.8 | 9.8 | 0.7 | 13.4 | 0.8 | 21.1 | -1.3 | 22.5 | 2.0 |
| Jan 11 | 13.9 | 1.2 | 20.2 | 1.7 | 9.7 | 0.8 | 9.8 | 1.0 | 12.1 | 1.1 | 17.4 | 0.1 | 20.9 | 1.9 |
| Feb 11 | 12.8 | -0.6 | 17.6 | -1.8 | 9.7 | 0.3 | 9.7 | 0.4 | 12.0 | 0.4 | 15.3 | -1.3 | 22.1 | 2.0 |
| Mar 11 | 13.0 | 1.4 | 17.9 | 2.2 | 9.7 | 0.9 | 9.6 | 0.8 | 12.1 | 1.0 | 14.7 | 0.7 | 24.3 | 3.3 |
| Apr 11 | 12.5 | 1.4 | 16.5 | 1.3 | 9.8 | 1.5 | 9.5 | 1.4 | 12.0 | 1.0 | 14.2 | 0.3 | 24.9 | 2.5 |
| May 11 | 12.6 | 0.2 | 15.8 | -0.3 | 10.5 | 0.6 | 9.7 | 0.5 | 12.1 | 0.5 | 13.7 | -0.7 | 21.7 | -1.4 |
| Jun 11 | 13.3 | 1.0 | 15.8 | 0.7 | 11.6 | 1.2 | 9.8 | 0.5 | 12.4 | 0.7 | 13.0 | -0.1 | 22.8 | 1.0 |
| Jul 11 | 12.4 | 1.3 | 17.1 | 2.9 | 9.2 | 0.1 | 9.5 | 1.2 | 11.9 | 1.1 | 13.1 | 2.4 | 20.3 | -0.4 |
| Aug 11 | 11.6 | 1.4 | 13.2 | 1.4 | 10.4 | 1.4 | 10.0 | 0.8 | 12.5 | 0.8 | 11.6 | 0.8 | 18.7 | 0.6 |
| Sep 11 | 10.5 | 1.0 | 9.9 | 1.6 | 10.9 | 0.6 | 10.6 | 0.7 | 11.7 | 0.6 | 7.6 | 1.3 | 17.0 | 0.2 |
| Oct 11 | 11.0 | 1.4 | 11.7 | 1.6 | 10.4 | 1.3 | 10.4 | 1.4 | 11.7 | 1.0 | 6.5 | 0.8 | 15.4 | 0.4 |
| Nov 11 | 10.2 | 0.3 | 10.0 | 0.1 | 10.3 | 0.4 | 10.4 | 0.6 | 11.5 | 0.5 | 3.8 | 0.7 | 12.0 | -0.5 |
| Dec 11 | 9.7 | -0.7 | 9.5 | -2.2 | 9.9 | 0.4 | 10.1 | 0.4 | 10.5 | 0.3 | 3.0 | -2.0 | 8.3 | -1.3 |
| Jan 12 | 10.1 | 1.5 | 9.2 | 1.5 | 10.7 | 1.6 | 10.2 | 1.1 | 10.4 | 0.8 | 3.9 | 1.0 | 8.7 | 2.3 |

*NFNE is non-food non-enerav. ** SPI for quintile 1

Table 1.1 : Period Average and YoY % Changes of Indices (Base 2007-08)

| Index | Averages July-January % Changes | | | January over January % Changes | | |
|-------|---------------------------------|---------|---------|--------------------------------|---------|---------|
| | 2011-12 | 2010-11 | 2009-10 | 2011-12 | 2010-11 | 2009-10 |
| CPI | 10.76 | 14.26 | 9.06 | 10.10 | 13.91 | 11.32 |
| SPI | 6.91 | 18.38 | 10.46 | 3.95 | 17.34 | 17.80 |
| WPI | 14.16 | 19.68 | 10.11 | 8.70 | 20.90 | 18.17 |

Figure 1: CPI Inflation YoY, Special Indices

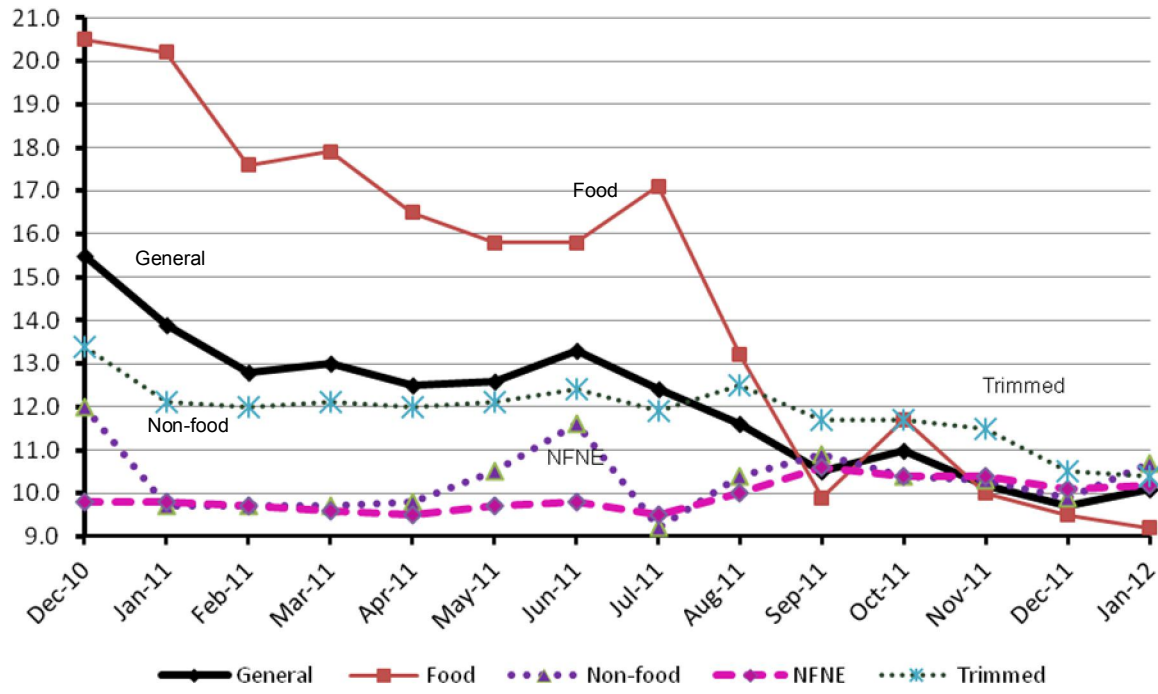
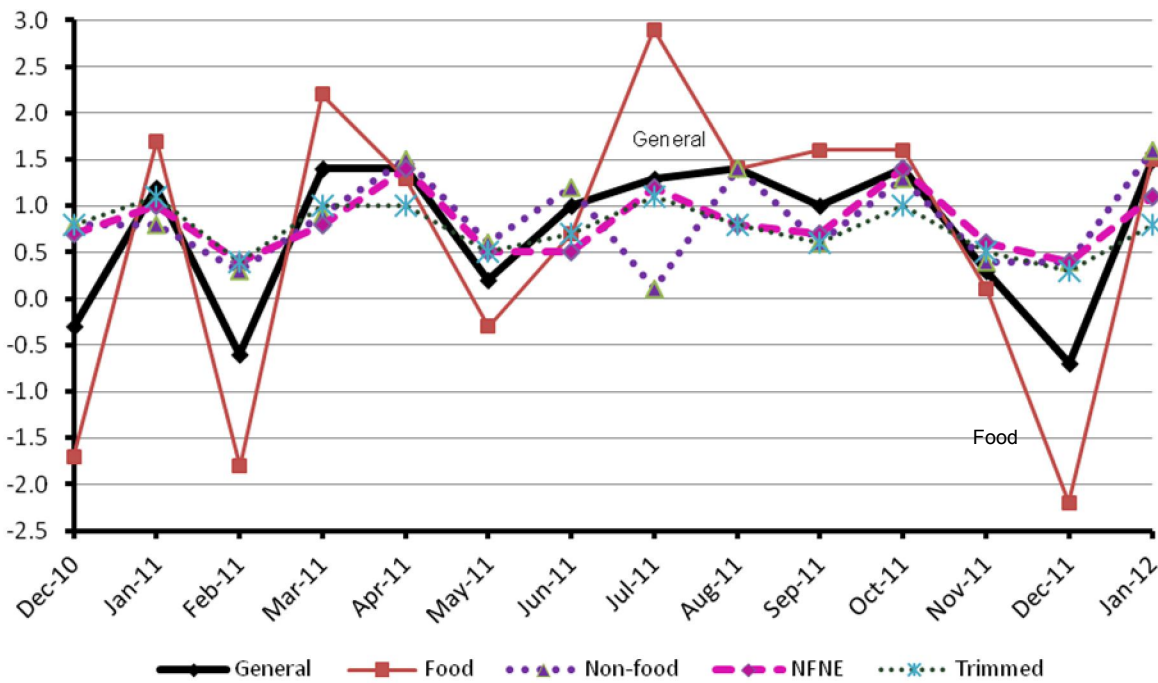


Figure 2: CPI Inflation MoM, Special Indices



II. Consumer Price Index (CPI)

The Consumer Price Index of January, 2012 has increased by 1.54% over December, 2011 and increased by 10.10% over corresponding month of last year.

Table 2 : Consumer Price Index by Group of Commodities and Services (Base 2007-08)

| No | Group | Group Weight (%) | Indices | | | % Change Jan 2012 over | | Impact (Adjusted) (In % points) Jan 2012 over | |
|-----|--|------------------|----------|----------|----------|------------------------|----------|---|--------------|
| | | | Jan 2012 | Dec 2011 | Jan 2011 | Dec 2011 | Jan 2011 | Dec 2011 | Jan 2011 |
| | General | 100.00 | 162.58 | 160.12 | 147.67 | 1.54 | 10.10 | 1.54 | 10.10 |
| 1. | Food & Non-alcoholic Bev. | 34.83 | 182.60 | 179.79 | 167.06 | 1.56 | 9.30 | 0.55 | 3.25 |
| | <i>Non-perishable Food Items</i> | 29.84 | 181.57 | 178.72 | 165.27 | 1.59 | 9.86 | 0.48 | 2.94 |
| | <i>Perishable Food Items</i> | 4.99 | 188.77 | 186.18 | 177.77 | 1.39 | 6.19 | 0.07 | 0.31 |
| 2. | Alcoholic Bev. & Tobacco | 1.41 | 161.68 | 161.68 | 151.35 | 0.00 | 6.83 | 0.00 | 0.10 |
| 3. | Clothing & Footwear | 7.57 | 153.60 | 151.61 | 133.18 | 1.31 | 15.33 | 0.10 | 1.16 |
| 4. | Housing, Water, Electricity, Gas & Fuels | 29.41 | 147.43 | 144.16 | 136.92 | 2.27 | 7.67 | 0.67 | 2.26 |
| 5. | Furnishing & Household Equipment Maintenance | 4.21 | 162.82 | 160.35 | 135.56 | 1.54 | 20.11 | 0.07 | 0.85 |
| 6. | Health | 2.19 | 138.53 | 137.16 | 124.79 | 1.00 | 11.01 | 0.02 | 0.24 |
| 7. | Transport | 7.20 | 168.41 | 166.18 | 146.65 | 1.34 | 14.84 | 0.10 | 1.07 |
| 8. | Communication | 3.22 | 122.32 | 123.10 | 122.82 | -0.63 | -0.40 | -0.02 | -0.01 |
| 9. | Recreation & Culture | 2.03 | 141.98 | 141.43 | 134.61 | 0.39 | 5.47 | 0.01 | 0.11 |
| 10. | Education | 3.94 | 141.09 | 140.80 | 127.32 | 0.21 | 10.81 | 0.01 | 0.43 |
| 11. | Restaurants & Hotels | 1.23 | 185.23 | 182.94 | 168.53 | 1.26 | 9.91 | 0.02 | 0.12 |
| 12. | Miscellaneous | 2.76 | 182.60 | 180.79 | 152.90 | 1.00 | 19.42 | 0.03 | 0.54 |

Main contributors to month-on-month and year-on-year percentage changes are given below and detail is given in Annexure A.

1. **Month-on-month** Top few commodities which varied from previous month i.e. December 2011 are given below:-
 - a. **Food Items Increased:** Chicken(24.12%), Eggs (18.26%), Spices(10.88%), Onion (7.12%), Fresh Fruits (5.62%), Condiments (4.49%), Fresh Vegetables (4.45%), Honey (3.43%), Fish (2.92%), Gram Whole (1.34%) and Readymade Food (1.25%).
Decreased: Tomatoes (18.53%), Potatoes (16.84%), Sugar (5.64%), Gur (3.70%) and Pulse Moong (2.26%).
 - b. **Non-food Items Increased:** Gas (13.97%), Woolen Readymade Garments (5.73%), Mechanical Services (4.28%), Cleaning and Laundry (3.29%), Motor Vehicle Accessories (3.27%), Woolen Cloth (2.87%), Household Servant (2.47%), Dopatta (2.32%), Utensils (2.16%), Motor Fuel (1.86%), Household Textiles (1.84%), Doctor (MBBS) Clinic Fee (1.82%) and Furniture (1.78%).
Decreased: None.
2. **Year-on-year** Top ten commodities which varied from previous year i.e. January 2011 are given below:-
 - a. **Food Items Increased:** Chicken (27.90%), Condiments (27.34%), Spices (27.32%), Fresh Fruits (25.23%), Eggs (25.03%), Gram Whole (23.80%), Betel Leaves & Nuts (23.35%), Milk Products (20.31%), Milk Fresh (18.74%) and Milk Powder (17.29%).

Decreased: Tomatoes (35.70%), Sugar (29.35%), Gur (12.86%), Pulse Masoor (11.64%), Potatoes (10.00%), Pulse Moong (9.79%) and Pulse Mash Washed (9.27%).

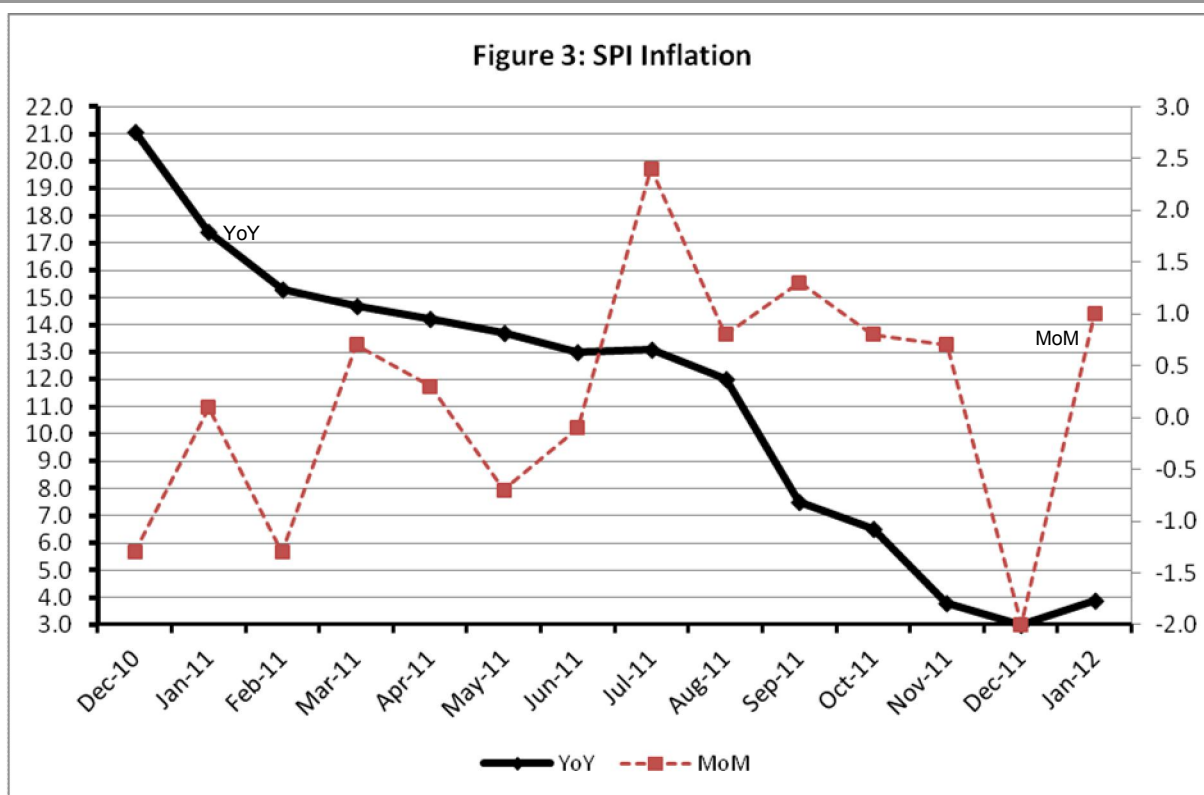
- b. **Non-food Items Increased:** Household Servant (35.56%), Gas (29.41%), Kerosene Oil (26.08%), Woolen Cloth (25.13%), Medical Equipments (24.68%), Firewood Whole (24.01%), Dopatta (23.76%), Personal Equipments (22.98%), Blades (22.64%) and Motor Fuel (20.43%).

Decreased: None.

III. Sensitive Price Indicator

Quintile-wise percentage changes YoY and MoM are given below in Table 3. The series from December 2010 to January 2012 is also graphed below in Figure 3.

| Table 3 : Sensitive Price Indicator (Base 2007-08) | | | | | | |
|--|----------|----------|----------|------------------------|----------|--|
| Quintiles | Indices | | | % Change Jan 2012 over | | |
| | Jan 2012 | Dec 2011 | Jan 2011 | Dec 2011 | Jan 2011 | |
| 1 | 169.77 | 168.09 | 163.32 | 1.00 | 3.95 | |
| 2 | 172.85 | 170.75 | 164.63 | 1.23 | 4.99 | |
| 3 | 172.56 | 170.48 | 163.78 | 1.22 | 5.36 | |
| 4 | 180.87 | 177.31 | 169.30 | 2.01 | 6.83 | |
| 5 | 185.98 | 181.46 | 171.30 | 2.49 | 8.57 | |
| Combined | 178.25 | 175.04 | 166.96 | 1.83 | 6.76 | |



IV. Wholesale Price Index

The Wholesale Price Index for January 2012 increased by 2.26% over December 2011. It increased by 8.70% over the corresponding month of the last year. YoY and MoM movements, from December 2010 to January 2012 are also graphed below in Figure 4.

Table 4 : Wholesale Price Index by Group of Commodities (Base 2007-08)

| No. | Group | Group Weight (%) | Indices | | | % Change Jan 2012 over | | Impact (Adjusted) (in %age points) Jan 2012 over | |
|-----|--|------------------|----------|----------|----------|------------------------|----------|--|----------|
| | | | Jan 2012 | Dec 2011 | Jan 2011 | Dec 2011 | Jan 2011 | Dec 2011 | Jan 2011 |
| | | | | | | | | | |
| | General | 100.00 | 179.99 | 176.01 | 165.58 | 2.26 | 8.70 | 2.26 | 8.70 |
| 1. | Agriculture, Forestry & Fishery Products | 25.77 | 180.98 | 178.32 | 188.37 | 1.49 | 3.92 | 0.38 | -0.87 |
| 2. | Ores & Minerals, Electricity, Gas & Water | 12.04 | 185.61 | 170.51 | 161.43 | 8.86 | 14.98 | 1.05 | 1.55 |
| 3. | Food Products, Beverages & Tobacco, Textiles, Apparel & Leather Products | 31.11 | 172.47 | 170.36 | 169.07 | 1.24 | 2.01 | 0.40 | 0.77 |
| | i. Food Products, Bev. & Tobacco | 20.07 | 176.53 | 176.53 | 155.93 | -1.96 | 13.21 | -0.04 | 1.73 |
| | ii. Textiles and Apparel | 10.33 | 162.41 | 162.41 | 187.94 | -5.27 | -13.58 | 0.44 | -0.99 |
| | iii. Leather Products | 0.71 | 111.75 | 111.75 | 106.32 | 0.00 | 5.11 | 0.00 | 0.03 |
| 4. | Other Transportable Goods except Metal Products, Machinery & Equipments | 22.37 | 196.36 | 192.97 | 151.59 | 1.76 | 29.53 | 0.39 | 5.67 |
| 5. | Metal Products, Machinery & Equipments | 8.72 | 154.15 | 153.46 | 127.33 | 0.45 | 21.06 | 0.04 | 1.58 |

Main contributors to month-on-month and year-on-year percentage changes are given below and detail is given in Annexure B.

1. **Month-on-month** Top few commodities which varied from previous month i.e. December 2011 are given below:-

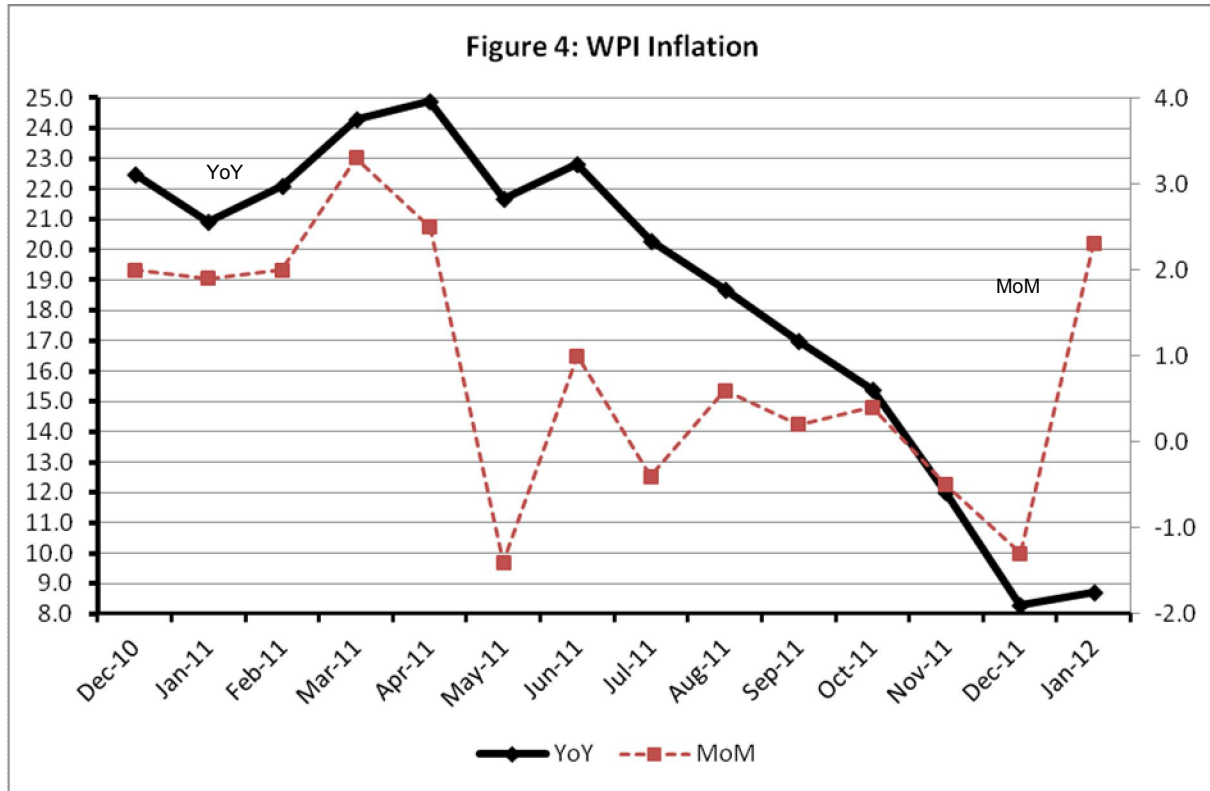
Increased: Poultry (35.14%), Eggs (22.45%), Natural Gas Liquified (16.79%), Coal not Agglomerated (8.43%), Cotton Yarn (7.50%), Printing Paper (7.34%), Furnace Oil (6.11%), Coke (4.90%), Fibre Crops (4.39%) and Hard Board (4.35%).

Decreased: Edible Roots/Potatoes (26.80%), Sugar Refined (4.77%), Synthetic Carpets (4.01%), Blended Yarn (3.39%), Vegetables (2.96%), Oil Cakes (2.85%), Cotton Seeds (1.96%), Stimulant and Spice Crops (1.73%) and Insecticides (1.35%).

2. **Year-on-year** Top ten commodities which varied from previous year i.e. January 2011 are given below:-

Increased: Fertilizers (57.52%), Spices (52.92%), Furnace Oil (41.10%), Plastic Products (40.07%), Dairy Products n.e.c (38.35%), Mineral Water (36.86%), Woven Fabrics (36.18%), Other Food Products (36.16%), Eggs (36.15%), and Hard Board (35.84%).

Decreased: Fibre Crops (41.79%), Cotton Yarn (24.95%), Sugar Refined (22.15%), Milk and Cream in Solid Form (19.46%), Stimulant & Spice Crops (19.12%), Edible Roots/Potatoes (16.70%), Sorghum/Jowar (10.06%), Blended Yarn (8.54%), Tobacco Products (6.78%) and Sugar Crops (6.30%).



Annexure A: Consumer Price Index Numbers by Commodity Groups & Commodities (2007 - 2008 = 100)

| Item and Specification | Weight | Index Numbers | | | % Change in Jan 2012 Over | |
|---|----------------|---------------|---------------|---------------|---------------------------|----------------|
| | | Jan 2012 | Dec 2011 | Jan 2011 | Dec 2011 | Jan 2011 |
| General | 100.000 | 162.58 | 160.12 | 147.67 | + 1.54 | + 10.10 |
| Food & Non-alcoholic Beverages | 34.8343 | 182.60 | 179.79 | 167.06 | + 1.56 | + 9.30 |
| 01 Wheat | 0.3477 | 161.69 | 161.39 | 161.02 | + 0.19 | + 0.42 |
| 02 Wheat Flour | 4.1648 | 166.51 | 165.72 | 164.80 | + 0.48 | + 1.04 |
| 03 Wheat Product | 0.0959 | 162.11 | 161.94 | 158.73 | + 0.10 | + 2.13 |
| 04 Besan | 0.1500 | 163.78 | 163.91 | 163.74 | - 0.08 | + 0.02 |
| 05 Rice | 1.5821 | 151.67 | 151.97 | 135.54 | - 0.20 | + 11.90 |
| 06 Cereals | 0.1563 | 188.73 | 187.52 | 168.59 | + 0.65 | + 11.95 |
| 07 Bakery & Confectionary | 1.1550 | 163.26 | 161.89 | 148.97 | + 0.85 | + 9.59 |
| 08 Nimco | 0.4574 | 179.01 | 178.46 | 161.59 | + 0.31 | + 10.78 |
| 09 Meat | 2.4303 | 205.83 | 204.89 | 176.59 | + 0.46 | + 16.56 |
| 10 Chicken | 1.3596 | 186.93 | 150.61 | 146.15 | + 24.12 | + 27.90 |
| 11 Fish | 0.2970 | 184.85 | 179.60 | 167.85 | + 2.92 | + 10.13 |
| 12 Milk Fresh | 6.6800 | 196.26 | 195.47 | 165.29 | + 0.40 | + 18.74 |
| 13 Milk Products | 0.6338 | 193.33 | 191.77 | 160.69 | + 0.81 | + 20.31 |
| 14 Milk Powder | 0.1129 | 162.65 | 161.37 | 138.67 | + 0.79 | + 17.29 |
| 15 Eggs | 0.4555 | 232.34 | 196.47 | 185.83 | + 18.26 | + 25.03 |
| 16 Mustard Oil | 0.0952 | 154.05 | 153.30 | 140.37 | + 0.49 | + 9.75 |
| 17 Cooking Oil | 1.7538 | 145.70 | 145.49 | 134.20 | + 0.14 | + 8.57 |
| 18 Vegetable Ghee | 2.0714 | 155.25 | 155.28 | 148.77 | - 0.02 | + 4.36 |
| 19 Dry Fruits | 0.2543 | 194.07 | 195.24 | 174.37 | - 0.60 | + 11.30 |
| 20 Fresh Fruits | 1.8649 | 186.33 | 176.41 | 148.79 | + 5.62 | + 25.23 |
| 21 Pulse Masoor | 0.2712 | 151.48 | 152.48 | 171.44 | - 0.66 | - 11.64 |
| 22 Pulse Moong | 0.2336 | 240.61 | 246.18 | 266.73 | - 2.26 | - 9.79 |
| 23 Pulse Mash (Washed) | 0.2098 | 211.66 | 212.94 | 233.28 | - 0.60 | - 9.27 |
| 24 Pulse Gram | 0.2361 | 160.90 | 160.05 | 163.71 | + 0.53 | - 1.72 |
| 25 Gram Whole | 0.1616 | 202.60 | 199.93 | 163.65 | + 1.34 | + 23.80 |
| 26 Beans | 0.0269 | 179.19 | 178.54 | 164.39 | + 0.36 | + 9.00 |
| 27 Potatoes | 0.4776 | 125.20 | 150.55 | 139.11 | - 16.84 | - 10.00 |
| 28 Onion | 0.5417 | 257.03 | 239.95 | 252.40 | + 7.12 | + 1.83 |
| 29 Tomatoes | 0.4496 | 163.95 | 201.23 | 254.97 | - 18.53 | - 35.70 |
| 30 Fresh Vegetables | 1.6571 | 194.27 | 185.99 | 176.19 | + 4.45 | + 10.26 |
| 31 Sugar | 1.0445 | 186.97 | 198.14 | 264.63 | - 5.64 | - 29.35 |
| 32 Gur | 0.0220 | 231.81 | 240.71 | 266.03 | - 3.70 | - 12.86 |
| 33 Honey | 0.0446 | 212.30 | 205.26 | 191.28 | + 3.43 | + 10.99 |
| 34 SweetMeat | 0.2483 | 196.16 | 194.84 | 171.84 | + 0.68 | + 14.15 |
| 35 Beverages | 1.1990 | 158.52 | 159.46 | 137.62 | - 0.59 | + 15.19 |
| 36 Jam, Tomato Ketchup & Pickles | 0.2454 | 170.55 | 170.93 | 151.63 | - 0.22 | + 12.48 |
| 37 Condiments | 0.2656 | 202.08 | 193.39 | 158.69 | + 4.49 | + 27.34 |
| 38 Spices | 0.5441 | 276.35 | 249.24 | 217.06 | + 10.88 | + 27.32 |
| 39 Tea | 0.8377 | 201.70 | 201.02 | 184.77 | + 0.34 | + 9.16 |
| Alcoholic Beverages, Tobacco | 1.4135 | 161.68 | 161.68 | 151.35 | + 0.00 | + 6.83 |
| 40 Cigarettes | 1.3906 | 161.50 | 161.50 | 151.53 | + 0.00 | + 6.58 |
| 41 Betel Leaves & Nuts | 0.0229 | 172.97 | 172.89 | 140.23 | + 0.05 | + 23.35 |
| Clothing & Footwear | 7.5708 | 153.60 | 151.61 | 133.18 | + 1.31 | + 15.33 |
| 42 Cotton Cloth | 1.7286 | 149.71 | 149.68 | 128.42 | + 0.02 | + 16.58 |
| 43 Woollen Cloth | 0.8759 | 173.31 | 168.48 | 138.50 | + 2.87 | + 25.13 |
| 44 Readymade Garments | 0.9739 | 151.38 | 150.19 | 130.20 | + 0.79 | + 16.27 |
| 45 Woollen Readymade Garments | 0.3964 | 154.64 | 146.26 | 136.03 | + 5.73 | + 13.68 |
| 46 Hosiery | 0.5094 | 164.94 | 162.36 | 137.93 | + 1.59 | + 19.58 |
| 47 Dopatta | 0.4412 | 163.57 | 159.86 | 132.17 | + 2.32 | + 23.76 |
| 48 Cleaning and Laundry | 0.2110 | 170.41 | 164.99 | 143.42 | + 3.29 | + 18.82 |
| 49 Tailoring | 0.8840 | 180.44 | 178.74 | 154.97 | + 0.95 | + 16.44 |
| 50 Footwear | 1.5504 | 123.77 | 123.31 | 121.55 | + 0.37 | + 1.83 |

Annexure A: Consumer Price Index Numbers by Commodity Groups & Commodities (2007 - 2008 = 100)

| Item and Specification | Weight | Index Numbers | | | % Change in Jan 2012 Over | |
|--|----------------|---------------|---------------|---------------|---------------------------|----------------|
| | | Jan 2012 | Dec 2011 | Jan 2011 | Dec 2011 | Jan 2011 |
| Housing, Water, Elec., Gas, Other | 29.4149 | 147.43 | 144.16 | 136.92 | + 2.27 | + 7.68 |
| 51 House Rent | 21.8149 | 133.31 | 131.37 | 125.62 | + 1.48 | + 6.12 |
| 52 Construction Input Items | 0.5623 | 187.50 | 186.35 | 156.54 | + 0.62 | + 19.78 |
| 53 Construction Wage Rates | 0.3331 | 155.90 | 153.46 | 139.75 | + 1.59 | + 11.56 |
| 54 Water Supply | 0.4971 | 129.32 | 128.32 | 118.21 | + 0.78 | + 9.40 |
| 55 Electricity | 4.3985 | 168.71 | 168.71 | 166.67 | + 0.00 | + 1.22 |
| 56 Gas | 1.5756 | 264.42 | 232.00 | 204.32 | + 13.97 | + 29.41 |
| 57 Kerosene Oil | 0.0057 | 239.67 | 239.70 | 190.09 | - 0.01 | + 26.08 |
| 58 Firewood Whole | 0.2277 | 205.48 | 202.66 | 165.69 | + 1.39 | + 24.01 |
| Furnished H.Hold Equip. & House | 4.2082 | 162.82 | 160.35 | 135.56 | + 1.54 | + 20.11 |
| 59 Furniture | 0.3315 | 152.83 | 150.16 | 134.31 | + 1.78 | + 13.79 |
| 60 Household Textiles | 0.6489 | 158.57 | 155.71 | 134.28 | + 1.84 | + 18.09 |
| 61 Household Equipment | 0.5936 | 149.60 | 148.58 | 136.88 | + 0.69 | + 9.29 |
| 62 Utensils | 0.3212 | 151.68 | 148.48 | 134.10 | + 2.16 | + 13.11 |
| 63 Plastic Products | 0.2547 | 165.86 | 164.47 | 146.56 | + 0.85 | + 13.17 |
| 64 Washing Soaps & Detergents | 0.7893 | 177.47 | 176.15 | 147.67 | + 0.75 | + 20.18 |
| 65 Sewing Needle & Dr Cell | 0.1496 | 139.69 | 138.05 | 122.99 | + 1.19 | + 13.58 |
| 66 Household Servant | 1.0432 | 170.44 | 166.33 | 125.73 | + 2.47 | + 35.56 |
| 67 Marriage Hall Charges | 0.0762 | 171.66 | 170.33 | 144.67 | + 0.78 | + 18.66 |
| Health | 2.1868 | 138.53 | 137.16 | 124.79 | + 1.00 | + 11.01 |
| 68 Drugs & Medicines | 1.2667 | 124.82 | 124.24 | 115.67 | + 0.47 | + 7.91 |
| 69 Medical Equipments | 0.0080 | 176.31 | 174.48 | 141.41 | + 1.05 | + 24.68 |
| 70 Doctor (MBBS) Clinic Fee | 0.5904 | 165.24 | 162.29 | 142.61 | + 1.82 | + 15.87 |
| 71 Medical Tests | 0.3217 | 142.52 | 140.99 | 127.57 | + 1.09 | + 11.72 |
| Transport | 7.2023 | 168.41 | 166.18 | 146.65 | + 1.34 | + 14.84 |
| 72 Motor Vehicles | 0.6630 | 142.31 | 141.05 | 134.41 | + 0.89 | + 5.88 |
| 73 Motor Vehicle Accessories | 0.2439 | 192.11 | 186.03 | 160.51 | + 3.27 | + 19.69 |
| 74 Motor Fuel | 3.0269 | 165.25 | 162.24 | 137.22 | + 1.86 | + 20.43 |
| 75 Mechanical Service | 0.4552 | 163.10 | 156.41 | 139.26 | + 4.28 | + 17.12 |
| 76 Motor Vehicle Tax | 0.1099 | 119.48 | 119.48 | 100.00 | + 0.00 | + 19.48 |
| 77 Transport Services | 2.7034 | 179.08 | 178.50 | 162.10 | + 0.32 | + 10.48 |
| Communication | 3.2198 | 122.32 | 123.10 | 122.82 | - 0.63 | - 0.41 |
| 78 Postal Services | 0.0662 | 165.45 | 164.83 | 161.69 | + 0.38 | + 2.33 |
| 79 Communication & Apparatus | 3.1536 | 121.42 | 122.23 | 122.00 | - 0.66 | - 0.48 |
| Recreation & Culture | 2.0227 | 141.98 | 141.43 | 134.61 | + 0.39 | + 5.48 |
| 80 Recreation & Culture | 0.8634 | 117.15 | 116.78 | 112.35 | + 0.32 | + 4.27 |
| 81 Text Books | 0.5706 | 164.41 | 164.41 | 158.93 | + 0.00 | + 3.45 |
| 82 Newspapers | 0.1934 | 149.97 | 149.97 | 137.66 | + 0.00 | + 8.94 |
| 83 Stationery | 0.3953 | 159.91 | 157.89 | 146.66 | + 1.28 | + 9.03 |
| Education | 3.9431 | 141.09 | 140.80 | 127.32 | + 0.21 | + 10.82 |
| 84 Education | 3.9431 | 141.09 | 140.80 | 127.32 | + 0.21 | + 10.82 |
| Restaurants & Hotels | 1.2286 | 185.23 | 182.94 | 168.53 | + 1.25 | + 9.91 |
| 85 Readymade Food | 1.2286 | 185.23 | 182.94 | 168.53 | + 1.25 | + 9.91 |
| Miscellaneous Goods & Services | 2.7550 | 182.60 | 180.79 | 152.90 | + 1.00 | + 19.42 |
| 86 Personal Care | 1.4935 | 164.75 | 163.53 | 139.20 | + 0.75 | + 18.35 |
| 87 Cosmetics | 0.3853 | 141.75 | 141.04 | 126.57 | + 0.50 | + 11.99 |
| 88 Blades | 0.0322 | 160.44 | 159.77 | 130.82 | + 0.42 | + 22.64 |
| 89 Personal Equipments | 0.8440 | 233.66 | 230.29 | 190.00 | + 1.46 | + 22.98 |

Annexure B: Wholesale Price Indices by Major Groups and Commodities

(2007 - 2008 = 100)

| Item and Specification | Weight | Index Numbers | | | % Change in Jan 2012 Over | | | |
|--|-----------------|---------------|---------------|---------------|---------------------------|-------------|----------|--------------|
| | | Jan 2012 | Dec 2011 | Jan 2011 | Dec 2011 | Jan 2011 | Jan 2011 | Jan 2011 |
| General | 100.0000 | 179.99 | 176.01 | 165.58 | + | 2.26 | + | 8.70 |
| Agriculture Forestry & | 25.7674 | 180.98 | 178.32 | 188.37 | + | 1.49 | - | 3.92 |
| 001 Wheat | 0.6297 | 167.14 | 167.12 | 165.84 | + | 0.01 | + | 0.78 |
| 002 Maize | 0.6764 | 149.52 | 147.58 | 149.40 | + | 1.31 | + | 0.08 |
| 003 Rice | 2.4413 | 150.11 | 150.30 | 124.24 | - | 0.13 | + | 20.82 |
| 004 Sorghum/Jowar | 0.0214 | 183.37 | 185.14 | 203.89 | - | 0.96 | - | 10.06 |
| 005 Millet/Bajra | 0.0374 | 144.52 | 144.74 | 118.40 | - | 0.15 | + | 22.06 |
| 006 Vegetables | 1.2441 | 228.66 | 235.64 | 171.54 | - | 2.96 | + | 33.30 |
| 007 Fresh Fruits | 1.5144 | 127.25 | 127.26 | 110.08 | - | 0.01 | + | 15.60 |
| 008 Dry Fruits | 0.2478 | 187.31 | 187.65 | 165.72 | - | 0.18 | + | 13.03 |
| 009 Cotton Seeds | 1.1511 | 198.57 | 202.55 | 176.08 | - | 1.96 | + | 12.77 |
| 010 Other Oil Seeds | 0.0722 | 170.57 | 169.82 | 148.57 | + | 0.44 | + | 14.81 |
| 011 Edible Roots/Potatoes | 0.2540 | 127.69 | 174.44 | 153.29 | - | 26.80 | - | 16.70 |
| 012 Stimulant and Spice Crops | 0.1634 | 184.13 | 187.38 | 227.66 | - | 1.73 | - | 19.12 |
| 013 Pulses | 0.4901 | 205.53 | 205.76 | 166.74 | - | 0.11 | + | 23.26 |
| 014 Sugar Crops | 1.0725 | 291.82 | 291.82 | 311.44 | + | 0.00 | - | 6.30 |
| 015 Fibre Crops | 5.3169 | 178.29 | 170.80 | 306.27 | + | 4.39 | - | 41.79 |
| 016 Unmanufactured Tobacco | 0.0742 | 167.91 | 167.91 | 157.77 | + | 0.00 | + | 6.43 |
| 017 Poultry | 0.5633 | 199.73 | 147.79 | 149.03 | + | 35.14 | + | 34.02 |
| 018 Raw Milk from Bovine Animals | 7.0279 | 188.73 | 188.73 | 155.31 | + | 0.00 | + | 21.52 |
| 019 Eggs | 0.5034 | 246.45 | 201.26 | 181.02 | + | 22.45 | + | 36.15 |
| 020 Raw Animal Materials/Wool | 0.0351 | 134.64 | 131.99 | 114.75 | + | 2.01 | + | 17.33 |
| 021 Hides and Fur Skins, Raw | 0.4834 | 135.35 | 133.44 | 104.64 | + | 1.43 | + | 29.35 |
| 022 Fuel Wood in Logs | 0.0179 | 190.28 | 188.09 | 148.66 | + | 1.16 | + | 28.00 |
| 023 Fish Live Fresh or Chilled | 1.7295 | 140.90 | 140.41 | 142.05 | + | 0.35 | - | 0.81 |
| Ores/Minerals, Elec., Gas & | 12.0389 | 185.61 | 170.51 | 161.43 | + | 8.86 | + | 14.98 |
| 024 Coal not Agglomerated | 0.7508 | 141.18 | 130.20 | 125.49 | + | 8.43 | + | 12.50 |
| 025 Natural Gas Liquified | 5.7385 | 210.37 | 180.13 | 158.22 | + | 16.79 | + | 32.96 |
| 026 Salt and Pure Sodium Chloride | 0.0584 | 156.20 | 154.20 | 122.39 | + | 1.30 | + | 27.62 |
| 027 Electrical Energy | 5.4912 | 166.13 | 166.13 | 170.12 | + | 0.00 | - | 2.35 |
| Food, Beverages, Tobacco, Tea | 31.1122 | 172.47 | 170.36 | 169.07 | + | 1.24 | + | 2.01 |
| Food Products, Beverages | 20.0718 | 176.20 | 176.53 | 160.15 | - | 0.19 | + | 10.02 |
| 028 Meat of Animals | 3.4559 | 216.96 | 215.47 | 173.40 | + | 0.69 | + | 25.12 |
| 029 Vegetables and Fruit Juice | 0.0058 | 176.84 | 177.14 | 146.38 | - | 0.17 | + | 20.81 |
| 030 Dried Fruits and Nuts | 0.1733 | 201.73 | 201.89 | 172.07 | - | 0.08 | + | 17.24 |
| 031 Fruit Juices | 0.3880 | 155.01 | 155.01 | 128.50 | + | 0.00 | + | 20.63 |
| 032 Vegetable Oils Refined | 1.9242 | 150.74 | 150.85 | 126.97 | - | 0.07 | + | 18.72 |
| 033 Vegetable Ghee | 1.5632 | 139.02 | 138.76 | 116.64 | + | 0.19 | + | 19.19 |
| 034 Oil Cakes | 0.9611 | 147.65 | 151.98 | 147.62 | - | 2.85 | + | 0.02 |
| 035 Processed Liquid Milk | 4.4437 | 183.49 | 181.63 | 153.96 | + | 1.02 | + | 19.18 |
| 036 Milk and Cream in Solid Form | 0.0316 | 165.64 | 165.54 | 205.66 | + | 0.06 | - | 19.46 |
| 037 Ice Cream | 0.0047 | 153.30 | 154.15 | 136.87 | - | 0.55 | + | 12.00 |
| 038 Dairy Products N.E.C | 0.0117 | 186.79 | 182.91 | 135.01 | + | 2.12 | + | 38.35 |
| 039 Wheat Flour | 2.3034 | 153.41 | 153.41 | 149.49 | + | 0.00 | + | 2.62 |
| 040 Other Cereal Flour | 0.0604 | 143.85 | 143.79 | 142.87 | + | 0.04 | + | 0.69 |
| 041 Sugar Refined | 1.7975 | 194.56 | 204.30 | 249.93 | - | 4.77 | - | 22.15 |
| 042 Chocolate | 0.0139 | 100.26 | 100.00 | 99.72 | + | 0.26 | + | 0.54 |
| 043 Sugar Confectionary | 0.0738 | 100.40 | 100.40 | 102.28 | + | 0.00 | - | 1.84 |
| 044 Coffee and Tea | 0.7303 | 191.76 | 191.69 | 159.55 | + | 0.04 | + | 20.19 |
| 045 Spices | 0.1449 | 297.35 | 290.49 | 194.45 | + | 2.36 | + | 52.92 |
| 046 Other Food Products | 0.0336 | 319.57 | 318.59 | 234.71 | + | 0.31 | + | 36.16 |
| 047 Mineral Water | 0.0207 | 165.15 | 164.64 | 120.67 | + | 0.31 | + | 36.86 |
| 048 Beverages | 0.6303 | 133.61 | 133.04 | 119.80 | + | 0.43 | + | 11.53 |
| 049 Tobacco Products | 1.2998 | 166.13 | 166.13 | 178.22 | + | 0.00 | - | 6.78 |
| Textiles & Apparels | 10.3289 | 169.38 | 162.41 | 190.73 | + | 4.29 | - | 11.19 |
| 050 Cotton Yarn | 5.2491 | 187.99 | 174.87 | 250.47 | + | 7.50 | - | 24.95 |
| 051 Nylon Yarn | 0.1719 | 181.01 | 176.23 | 187.92 | + | 2.71 | - | 3.68 |
| 052 Blended Yarn | 0.1689 | 184.74 | 191.22 | 201.98 | - | 3.39 | - | 8.54 |
| 053 Woven Fabrics | 0.0128 | 169.77 | 165.01 | 124.67 | + | 2.88 | + | 36.18 |
| 054 Cotton Fabrics | 0.6343 | 167.56 | 165.72 | 136.56 | + | 1.11 | + | 22.70 |
| 055 Other Fabrics | 1.1016 | 154.60 | 153.88 | 124.12 | + | 0.47 | + | 24.56 |
| 056 Silk and Reyon Fabrics | 0.7350 | 138.40 | 138.37 | 123.89 | + | 0.02 | + | 11.71 |
| 057 Towels | 0.1235 | 178.07 | 178.07 | 139.76 | + | 0.00 | + | 27.41 |

Annexure B: Wholesale Price Indices by Major Groups and Commodities

(2007 - 2008 = 100)

| Item and Specification | Weight | Index Numbers | | | % Change in Jan 2012 Over | | | |
|---------------------------------------|----------------|---------------|---------------|---------------|---------------------------|-------------|----------|--------------|
| | | Jan 2012 | Dec 2011 | Jan 2011 | Dec 2011 | Jan 2011 | Jan 2011 | Jan 2011 |
| 058 Blankets | 0.0029 | 152.21 | 149.14 | 121.07 | + | 2.06 | + | 25.72 |
| 059 Bed Sheets | 0.0913 | 165.68 | 164.70 | 127.89 | + | 0.60 | + | 29.55 |
| 060 Quilts | 0.0019 | 147.05 | 147.05 | 129.58 | + | 0.00 | + | 13.48 |
| 061 Woolen Carpets | 0.0383 | 103.57 | 103.57 | 103.57 | + | 0.00 | + | 0.00 |
| 062 Synthetic Carpets | 0.0566 | 142.37 | 148.31 | 145.76 | - | 4.01 | - | 2.33 |
| 063 Hosiery Products | 0.8832 | 154.19 | 152.82 | 125.09 | + | 0.90 | + | 23.26 |
| 064 Readymade Garments | 1.0576 | 126.53 | 126.24 | 114.02 | + | 0.23 | + | 10.97 |
| Leather Products | 0.7115 | 111.99 | 111.75 | 106.34 | + | 0.21 | + | 5.31 |
| 065 Leather without Hair | 0.2973 | 109.90 | 109.34 | 105.18 | + | 0.51 | + | 4.49 |
| 066 Other Leather N.E.C | 0.2567 | 120.85 | 120.85 | 110.66 | + | 0.00 | + | 9.21 |
| 067 Footwears | 0.1575 | 101.48 | 101.48 | 101.48 | + | 0.00 | + | 0.00 |
| Other Transportable Goods | 22.3659 | 196.36 | 192.97 | 151.59 | + | 1.76 | + | 29.53 |
| 068 Timber | 0.0165 | 138.08 | 135.73 | 125.69 | + | 1.73 | + | 9.86 |
| 069 Printing Paper | 0.4279 | 129.31 | 120.47 | 104.66 | + | 7.34 | + | 23.55 |
| 070 Hard Board | 0.1579 | 150.00 | 143.75 | 110.42 | + | 4.35 | + | 35.84 |
| 071 Coke | 0.2797 | 163.45 | 155.82 | 136.21 | + | 4.90 | + | 20.00 |
| 072 Motor Spirit | 1.5336 | 151.25 | 148.46 | 123.21 | + | 1.88 | + | 22.76 |
| 073 Diesel Oil | 5.2664 | 238.14 | 238.13 | 185.47 | + | 0.00 | + | 28.40 |
| 074 Kerosine Oil | 0.2151 | 237.92 | 237.92 | 189.08 | + | 0.00 | + | 25.83 |
| 075 Furnace Oil | 3.2664 | 209.64 | 197.56 | 148.58 | + | 6.11 | + | 41.10 |
| 076 Mobil Oil | 0.7114 | 171.60 | 171.42 | 147.50 | + | 0.11 | + | 16.34 |
| 077 Chemicals | 1.7720 | 146.30 | 146.14 | 125.04 | + | 0.11 | + | 17.00 |
| 078 Dyeing Material | 0.1539 | 107.06 | 108.04 | 107.04 | - | 0.91 | + | 0.02 |
| 079 Fertilizers | 2.8657 | 269.32 | 262.61 | 170.97 | + | 2.56 | + | 57.52 |
| 080 Pesticides | 0.2763 | 165.65 | 165.03 | 131.12 | + | 0.38 | + | 26.33 |
| 081 Insecticides | 0.1276 | 128.31 | 130.07 | 128.57 | - | 1.35 | - | 0.20 |
| 082 Paints and Varnishes | 0.1916 | 182.02 | 180.34 | 150.25 | + | 0.93 | + | 21.14 |
| 083 Medicines | 1.1428 | 113.92 | 113.92 | 116.05 | + | 0.00 | - | 1.84 |
| 084 Soaps and Detergents | 0.8168 | 153.22 | 152.08 | 129.32 | + | 0.75 | + | 18.48 |
| 085 Auto Tyres | 0.2703 | 173.27 | 172.05 | 143.93 | + | 0.71 | + | 20.38 |
| 086 Plastic Products | 0.4550 | 179.60 | 179.97 | 128.22 | - | 0.21 | + | 40.07 |
| 087 Glass sheets | 0.2089 | 171.03 | 171.03 | 154.34 | + | 0.00 | + | 10.81 |
| 088 Other Glass Articles | 0.1635 | 206.71 | 206.71 | 171.45 | + | 0.00 | + | 20.57 |
| 089 Ceramics and Sanitary Fixture | 0.0244 | 133.14 | 132.70 | 128.65 | + | 0.33 | + | 3.49 |
| 090 Bricks, Blocks and Tiles | 0.1566 | 169.58 | 169.63 | 141.75 | - | 0.03 | + | 19.63 |
| 091 Cement | 1.8145 | 158.11 | 155.70 | 140.64 | + | 1.55 | + | 12.42 |
| 092 Bed Foam | 0.0006 | 127.00 | 125.50 | 114.00 | + | 1.20 | + | 11.40 |
| 093 Matches | 0.0505 | 119.42 | 120.39 | 109.83 | - | 0.81 | + | 8.73 |
| Metal Product, Machinery & | 8.7156 | 154.15 | 153.46 | 127.33 | + | 0.45 | + | 21.06 |
| 094 Pig Iron | 0.0593 | 128.97 | 128.97 | 128.97 | + | 0.00 | + | 0.00 |
| 095 Steel Bar and Sheets | 1.4022 | 132.48 | 133.20 | 114.11 | - | 0.54 | + | 16.10 |
| 096 Pipe Fittings | 0.0780 | 140.52 | 140.49 | 129.16 | + | 0.02 | + | 8.80 |
| 097 Steel Products | 0.3879 | 157.51 | 157.56 | 123.56 | - | 0.03 | + | 27.48 |
| 098 Engines and Motors | 0.0046 | 109.07 | 109.07 | 105.28 | + | 0.00 | + | 3.60 |
| 099 Vacuum Pumps | 0.0155 | 115.39 | 115.39 | 111.45 | + | 0.00 | + | 3.54 |
| 100 Air Conditioners | 0.0049 | 163.59 | 163.59 | 143.24 | + | 0.00 | + | 14.21 |
| 101 Cultivators | 0.0551 | 184.66 | 184.66 | 170.96 | + | 0.00 | + | 8.01 |
| 102 Chuff Cutter | 0.1293 | 131.08 | 131.08 | 126.82 | + | 0.00 | + | 3.36 |
| 103 Tractors | 0.0028 | 180.89 | 180.89 | 147.29 | + | 0.00 | + | 22.81 |
| 104 Lathe Machines | 0.0525 | 147.51 | 147.51 | 140.74 | + | 0.00 | + | 4.81 |
| 105 Concrete Mixture | 0.0107 | 138.83 | 138.83 | 134.63 | + | 0.00 | + | 3.12 |
| 106 Fridge,WashM,SewM,Fans,Iro | 1.1645 | 163.41 | 163.41 | 134.84 | + | 0.00 | + | 21.19 |
| 107 Electric Wires | 0.0912 | 163.22 | 163.22 | 140.41 | + | 0.00 | + | 16.25 |
| 108 Lighting Equipments | 1.4431 | 142.85 | 142.85 | 111.32 | + | 0.00 | + | 28.32 |
| 109 Radio and Television | 0.1843 | 131.33 | 131.33 | 121.92 | + | 0.00 | + | 7.72 |
| 110 Motor Vehicles | 0.0244 | 157.53 | 154.47 | 139.95 | + | 1.98 | + | 12.56 |
| 111 Motorcycles | 0.2570 | 123.29 | 121.72 | 116.74 | + | 1.29 | + | 5.61 |
| 112 Bicycles | 3.3483 | 169.33 | 167.39 | 137.32 | | 1.16 | | 23.31 |