



Monthly Review on Price Indices



August, 2012
(Base 2007-08)

**Government of Pakistan
Statistics Division
Pakistan Bureau of Statistics
Islamabad**

I. Inflation in Brief

1. CPI inflation, General, increased by 9.1% on year-on-year basis in August 2012 as compared to 9.6% in the previous month and 11.6% in August 2011. On month-on-month basis, it increased by 0.9% in August 2012 as compared to a decrease by 0.2% in the previous month and an increase by 1.4% in August 2011.
2. Core inflation measured by non-food non-energy CPI (Core NFNE) increased by 10.8% in August 2012 as compared to 11.3% in July 2012(YoY) and by 10.0% in August 2011. Core NFNE inflation on MoM basis increased by 0.3% in August 2012 as compared to 1.0% a month earlier and 0.8% in August 2011.
3. Core inflation, measured by 20% weighted trimmed mean CPI (Core Trimmed) increased by 10.6% in August 2012 and by 10.7% in July 2012(YoY) which increased by 12.5% in August 2011. Core Trimmed inflation has increased by 0.4% on MoM basis in August 2012 as compared to 0.7% in July 2012 which increased by 0.8% in August 2011.
4. SPI inflation on YoY basis increased by 8.2% in August 2012 compared with 7.7% a month earlier and 11.6% in August 2011. On MoM basis, it increased by 1.3% in August 2012 as compared to 0.5% a month earlier and 0.8% in August 2011.
5. WPI inflation on YoY basis increased to 7.7% in August 2012 compared with 7.2% a month earlier and 18.7% in August 2011. WPI inflation on MoM basis increased by 1.0% in August 2012 as compared to an increase of 0.4% a month earlier and 0.6% in August 2011.
6. Figures 1 and 2 show graphically the data of Table 1. Table 1.1 shows %Period Average+ and %YoY+ percent changes in indices of three years.

Table 1: Inflation (%) (Base 2007-08)

Period	CPI						Core Inflation				SPI**		WPI	
	General		Food		Non-food		NFNE*		Trimmed		YoY	MoM	YoY	MoM
	YoY	MoM	YoY	MoM	YoY	MoM	YoY	MoM	YoY	MoM				
Jul 11	12.4	1.3	17.1	2.9	9.2	0.1	9.5	1.2	11.9	1.1	13.1	2.4	20.3	-0.4
Aug 11	11.6	1.4	13.2	1.4	10.4	1.4	10.0	0.8	12.5	0.8	11.6	0.8	18.7	0.6
Sep 11	10.5	1.0	9.9	1.6	10.9	0.6	10.6	0.7	11.7	0.6	7.6	1.3	17.0	0.2
Oct 11	11.0	1.4	11.7	1.6	10.4	1.3	10.4	1.4	11.7	1.0	6.5	0.8	15.4	0.4
Nov 11	10.2	0.3	10.0	0.1	10.3	0.4	10.4	0.6	11.5	0.5	3.8	0.7	12.0	-0.5
Dec 11	9.7	-0.7	9.5	-2.2	9.9	0.4	10.1	0.4	10.5	0.3	3.0	-2.0	8.3	-1.3
Jan 12	10.1	1.5	9.2	1.5	10.7	1.6	10.2	1.1	10.4	0.8	3.9	1.0	8.7	2.3
Feb 12	11.0	0.3	10.5	-0.7	11.5	1.0	10.6	0.7	10.7	0.5	5.2	-0.1	7.2	0.6
Mar 12	10.8	1.2	9.8	1.5	11.5	0.9	10.8	1.0	10.5	0.8	6.1	1.5	4.5	0.7
Apr 12	11.3	1.8	10.7	2.2	11.6	1.6	10.8	1.4	11.0	1.3	7.5	1.7	3.8	1.8
May 12	12.3	1.1	11.3	0.2	13.1	1.9	11.1	0.8	11.7	0.5	8.1	-0.1	7.1	2.1
Jun 12	11.3	0.0 ¹	10.3	-0.2	12.0	0.2	11.4	0.7	11.1	0.5	9.7	1.4	6.4	0.0 ²
Jul 12	9.6	-0.2	9.1	1.8	10.0	-1.7	11.3	1.0	10.7	0.7	7.7	0.5	7.2	0.4
Aug 12	9.1	0.9	8.5	0.9	9.4	0.9	10.8	0.3	10.6	0.4	8.2	1.3	7.7	1.0

*NFNE is non-food non-energy, ** SPI for quintile 1, ¹ Actual figure is 0.04, displayed in rounded figure

² Actual figure is -0.05. displayed in rounded figure

Table 1.1 : Period Average and YoY % Changes of Indices (Base 2007-08)

Index	Averages July-August % Changes			August over August % Changes		
	2012-13	2011-12	2010-11	2012-13	2011-12	2010-11
CPI	9.32	11.99	12.59	9.05	11.56	12.79
SPI	7.92	12.33	13.90	8.16	11.55	13.89
WPI	7.47	19.46	17.85	7.71	18.68	17.53

Figure 1: CPI Inflation YoY, Special Indices

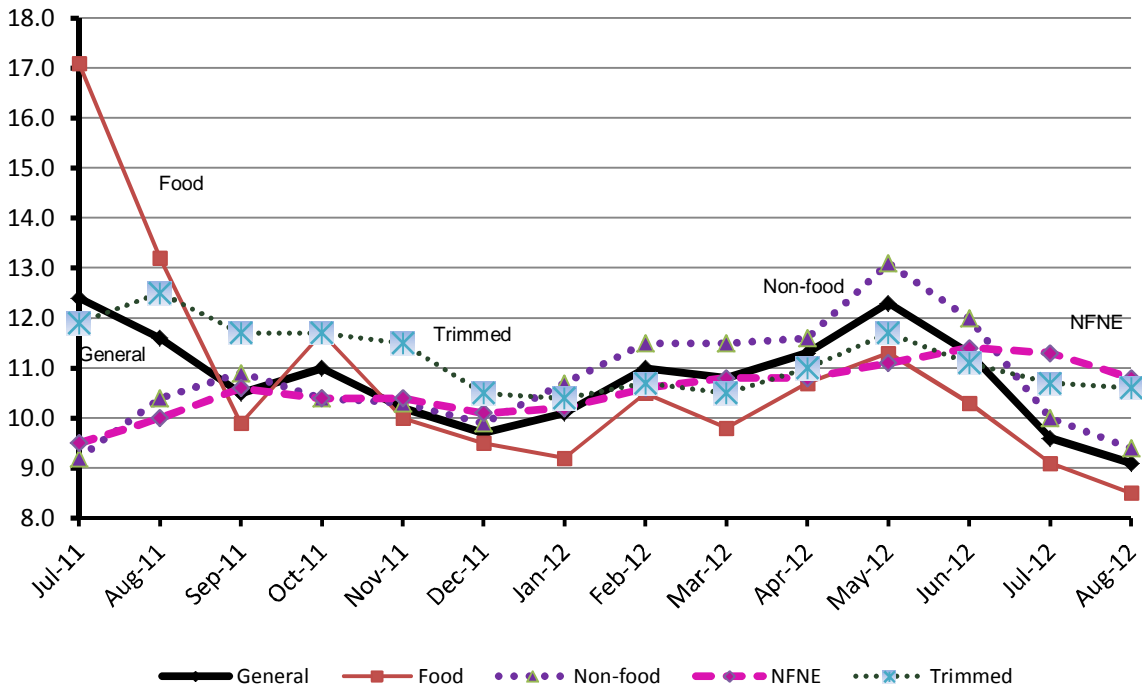
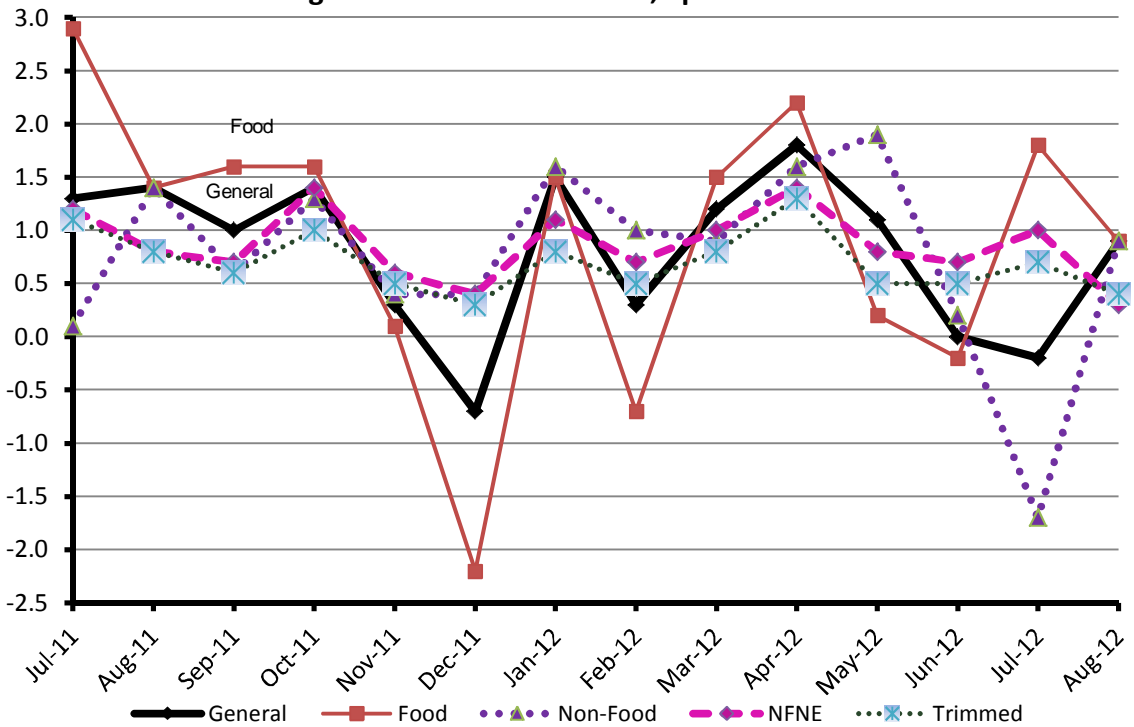


Figure 2: CPI Inflation MoM, Special Indices



II. Consumer Price Index (CPI)

The Consumer Price Index of August, 2012 has increased by 0.90% over July, 2012 and increased by 9.05% over corresponding month of last year.

Table 2 : Consumer Price Index by Group of Commodities and Services (Base 2007-08)

No	Group	Group Weight (%)	Indices			% Change Aug 2012 over		Impact (Adjusted) (In % points) Aug 2012 over	
			Aug 2012	July 2012	Aug 2011	July 2012	Aug 2011	July 2012	Aug 2011
	General	100.00	171.09	169.57	156.89	0.90	9.05	0.90	9.05
1.	Food & Non-alcoholic Bev.	34.83	192.43	190.58	177.95	0.97	8.14	0.36	2.85
	<i>Non-perishable Food Items</i>	<i>29.84</i>	<i>190.34</i>	<i>190.13</i>	<i>177.48</i>	<i>0.11</i>	<i>7.25</i>	<i>0.04</i>	<i>2.18</i>
	<i>Perishable Food Items</i>	<i>4.99</i>	<i>204.93</i>	<i>193.25</i>	<i>180.78</i>	<i>6.04</i>	<i>13.36</i>	<i>0.32</i>	<i>0.67</i>
2.	Alcoholic Bev.& Tobacco	1.41	189.91	189.36	160.77	0.29	18.13	0.00	0.26
3.	Clothing & Footwear	7.57	167.23	165.67	144.70	0.94	15.57	0.08	1.19
4.	Housing, Water, Electricity, Gas & Fuels	29.41	147.95	147.92	141.69	0.02	4.42	0.01	1.31
5.	Furnishing & Household Equipment Maintenance	4.21	174.05	174.01	148.31	0.02	17.36	0.00	0.74
6.	Health	2.19	152.39	149.84	131.80	1.70	15.62	0.04	0.34
7.	Transport	7.20	186.61	178.58	161.69	4.50	15.41	0.35	1.12
8.	Communication	3.22	123.56	123.56	123.34	0.00	0.18	0.00	0.01
9.	Recreation & Culture	2.03	165.19	164.63	139.07	0.34	18.78	0.01	0.38
10.	Education	3.94	153.60	152.71	139.75	0.58	9.91	0.02	0.39
11.	Restaurants & Hotels	1.23	196.56	196.24	178.46	0.16	10.14	0.00	0.13
12.	Miscellaneous	2.76	192.44	190.67	172.21	0.93	11.75	0.03	0.33

Main contributors to month-on-month and year-on-year percentage changes are given below and detail is given in Annexure A.

1. **Month-on-month** Top few commodities which varied from previous month i.e. July 2012 are given below:-

Food Items Increased: Tomatoes (111.68%), Onions(28.03%), Potatoes (6.43%), Eggs (6.23%), Dry Fruits (2.01%), Wheat Flour & Beverages (1.50% each), Wheat (1.37%), Milk Fresh (1.17%), Wheat Products (1.14%) and Beans (1.00%).

Decreased: Chicken (11.68%), Fresh Fruits (2.23%), Fresh Vegetables (2.08%), Pulse Gram (1.14%), Fish (1.10%), Pulse Moong (0.98%), Sugar (0.96%), Spices (0.69%), Pulse Mash (0.49%) and Pulse Masoor (0.41%).

Non-food Items Increased: Motor Fuel (11.55%), Kerosene Oil (4.04%), Newspapers (2.83%), Drugs & Medicines (2.21%), Tailoring (2.12%), Readymade Garments (2.07%), Personal Equipments (1.65%), Doctor (MBBS) Clinic Fee (1.50%), Hosiery (1.45%) and Cleaning & Laundry (1.43%).

Decreased: Utensils (0.65%).

2. **Year-on-year** Top few commodities which varied from previous year i.e. August 2011 are given below:-

Food Items Increased: Tomatoes (78.64%), Onions (46.27%), Pulse Gram (46.13%), Besan (43.65%), Gram Whole (23.96%), Honey (21.08%), Beans (19.60%), Condiments (19.32%), Fresh Fruits (18.31%), Cigarettes (18.26%), Milk Powder (17.70%) and Cooking Oil (13.43%).

Decreased: Sugar (26.70%), Gur (17.79%), Pulse Moong (14.67%), Pulse Mash (11.32%), Pulse Masoor (10.35%), Fresh Vegetables (5.27%), Chicken (4.66%) and Potatoes (3.82%).

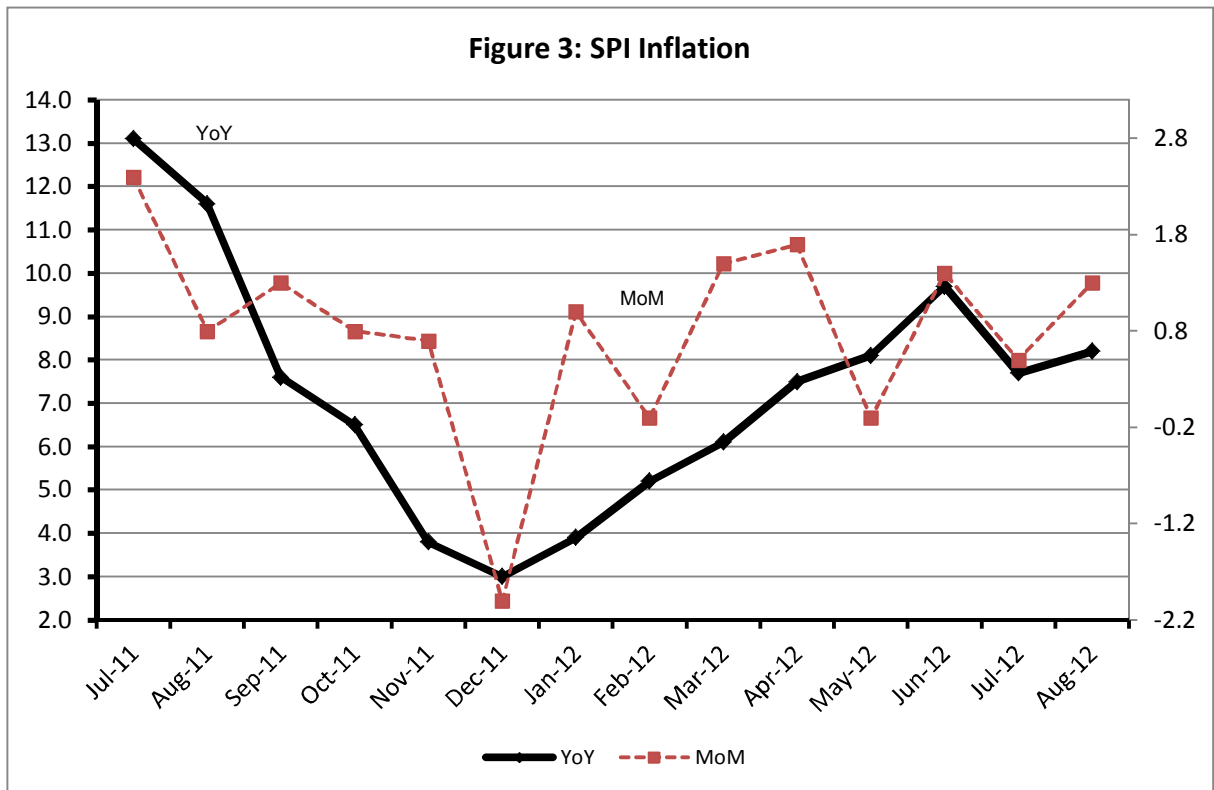
Non-food Items Increased: Text Books (40.47%), Household Servant (28.72%), Motor Vehicle Tax (26.89%), Doctor (MBBS) Clinic Fee (22.37%), Firewood Whole (21.46%), Utensils (21.34%), Cleaning & Laundry (20.18%), and Dopatta (18.98%).

Decreased: Gas (42.09%).

III. Sensitive Price Indicator

Quintile-wise percentage changes YoY and MoM are given below in Table 3. The series from July 2011 to August 2012 is also graphed below in Figure 3.

Table 3 : Sensitive Price Indicator (Base 2007-08)							
Quintiles	Indices			% Change Aug 2012 over			
	Aug 2012	July 2012	Aug 2011	July 2012	Aug 2011		
1	180.34	178.05	166.74	1.29	8.16		
2	186.89	184.66	169.70	1.21	10.13		
3	185.92	183.65	169.42	1.24	9.74		
4	187.33	184.94	176.29	1.29	6.26		
5	187.77	185.01	180.11	1.49	4.25		
Combined	186.47	183.98	173.86	1.35	7.25		



IV. Wholesale Price Index

The Wholesale Price Index for August 2012 increased by 1.02% over July 2012. It increased by 7.71% over the corresponding month of the last year. YoY and MoM movements, from July 2011 to August 2012 are also graphed below in Figure 4.

Table 4 : Wholesale Price Index by Group of Commodities (Base 2007-08)

No.	Group	Group Weight (%)	Indices			% Change August 2012 over		Impact (Adjusted) (in %age points) Aug 2012 over	
			Aug 2012	Jul 2012	Aug 2011	July 2012	Aug 2011	Jul 2012	Aug 2011
			General	100.00	191.99	190.05	178.24	1.02	7.71
1.	Agriculture, Forestry & Fishery Products	25.77	196.79	197.57	189.98	-0.39	3.58	-0.05	1.25
2.	Ores & Minerals, Electricity, Gas & Water	12.04	207.36	206.19	170.01	0.57	21.97	0.07	2.39
3.	Food Products, Beverages & Tobacco, Textiles, Apparel & Leather Products	31.11	183.90	182.41	176.26	0.82	4.33	0.26	1.51
	i. Food Products, Bev. & Tobacco	20.07	188.39	187.11	178.64	0.68	5.46	0.14	1.19
	ii. Textiles and Apparel	10.33	179.69	177.68	176.23	1.13	1.96	0.13	0.28
	iii. Leather Products	0.71	118.56	118.56	109.33	0.00	8.44	0.00	0.05
4.	Other Transportable Goods except Metal Products, Machinery & Equipments	22.37	202.63	195.56	184.17	3.62	10.02	0.76	1.97
5.	Metal Products, Machinery & Equipments	8.72	158.17	158.63	146.74	-0.29	7.79	-0.03	0.59

Main contributors to month-on-month and year-on-year percentage changes are given below and detail is given in Annexure B.

1. **Month-on-month** Top few commodities which varied from previous month i.e. July 2012 are given below:-

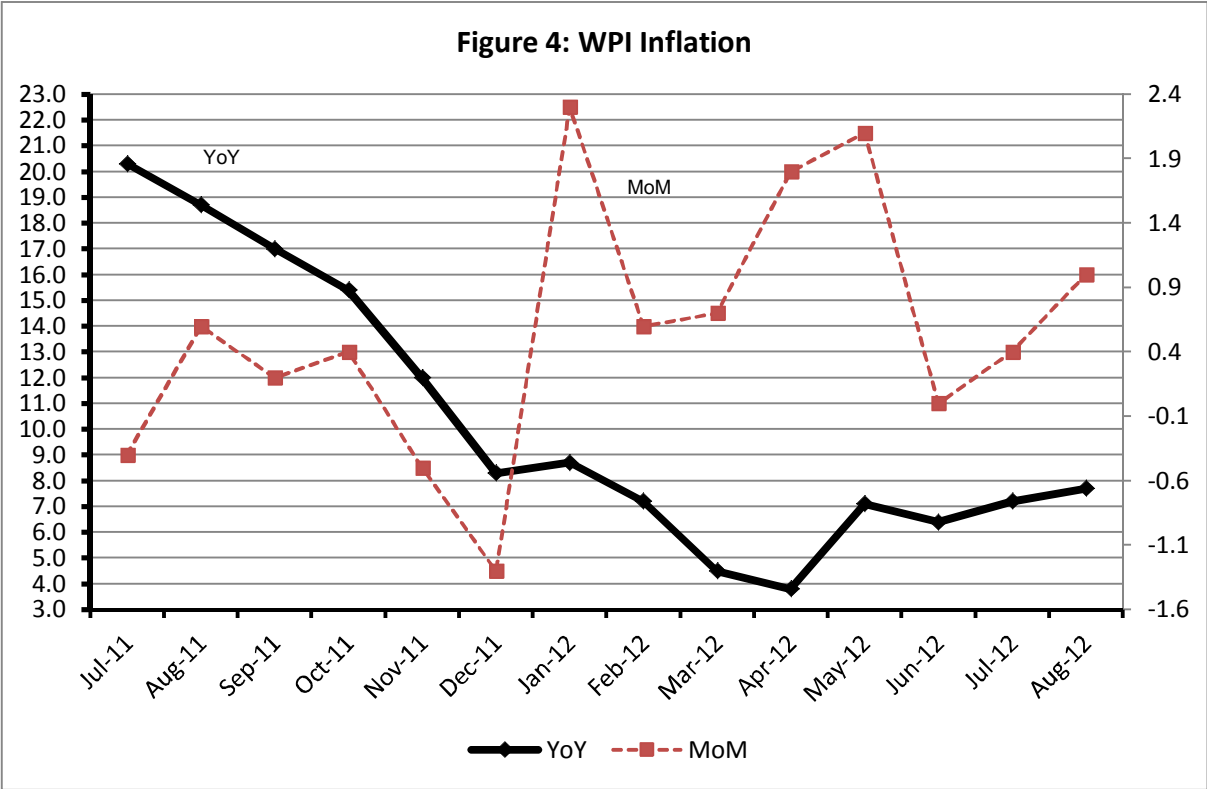
Increased:Vegetables (13.35%), Motor Spirit (11.72%), Edible Roots/Potatoes (9.59%), Kerosine Oil (8.46%), Diesel (7.81%), Readymade Garments (5.61%), Furnace Oil (5.36%), Oil Cakes (4.56%), Bed Foam (4.48%) and Eggs (4.14%).

Decreased:Poultry (16.68%), Fibre Crops (3.93%), Cotton Seeds (3.56%), Fresh Fruits (2.68%), Electric Wires (2.58%) and Stimulant & Spice Crops (2.16%).

2. **Year-on-year** Top ten commodities which varied from previous year i.e. August , 2011 are given below:-

Increased:Coal not Agglomerated (56.25%), Fresh Fruits (49.19%), Spices (46.29%), Other Cereal Flour (43.88%), Electrical Energy (36.10%), Paints and Varnishes (32.55%), Printing Paper (30.02%), Fish (29.04%), Footwears (26.63%) and Bed Sheets (21.57%).

Decreased:Sugar Refined (27.04%), Fiber Crops (20.52%), Stimulant and Spice Crops (18.85%), Synthetic Carpets (17.43%),Edible Roots/Potatoes (13.15%), Cotton Seeds (11.15%), Blended Yarn (11.11%) and Poultry (10.91%).



Annexure A: Consumer Price Index Numbers by Commodity Groups & Commodities (2007 - 2008 = 100)

Item and Specification	Weight	Index Numbers			% Change in Aug 2012 Over			
		Aug 2012	Jul 2012	Aug 2011	Jul 2012	Aug 2011		
General	100.000	171.09	169.57	156.89	+	0.90	+	9.05
Food & Non-alcoholic Beverages	34.8343	192.43	190.58	177.95	+	0.97	+	8.14
01 Wheat	0.3477	161.25	159.07	150.12	+	1.37	+	7.41
02 Wheat Flour	4.1648	168.22	165.74	158.86	+	1.50	+	5.89
03 Wheat Product	0.0959	164.31	162.45	158.22	+	1.14	+	3.85
04 Besan	0.1500	236.13	233.88	164.38	+	0.96	+	43.65
05 Rice	1.5821	168.45	167.07	149.33	+	0.83	+	12.80
06 Cereals	0.1563	197.29	196.40	179.57	+	0.45	+	9.87
07 Bakery & Confectionary	1.1550	170.69	170.02	156.97	+	0.39	+	8.74
08 Nimco	0.4574	192.39	191.57	172.25	+	0.43	+	11.69
09 Meat	2.4303	215.44	214.77	193.43	+	0.31	+	11.38
10 Chicken	1.3596	181.15	205.11	190.01	-	-11.68	-	-4.66
11 Fish	0.2970	184.21	186.25	164.52	-	-1.10	+	11.97
12 Milk Fresh	6.6800	213.26	210.80	188.81	+	1.17	+	12.95
13 Milk Products	0.6338	207.43	205.90	185.07	+	0.74	+	12.08
14 Milk Powder	0.1129	181.39	180.01	154.11	+	0.77	+	17.70
15 Eggs	0.4555	163.77	154.16	155.84	+	6.23	+	5.09
16 Mustard Oil	0.0952	160.17	160.06	145.96	+	0.07	+	9.74
17 Cooking Oil	1.7538	164.15	163.95	144.71	+	0.12	+	13.43
18 Vegetable Ghee	2.0714	163.86	164.31	155.92	-	-0.27	+	5.09
19 Dry Fruits	0.2543	203.16	199.15	188.89	+	2.01	+	7.55
20 Fresh Fruits	1.8649	238.71	244.15	201.77	-	-2.23	+	18.31
21 Pulse Masoor	0.2712	142.88	143.47	159.37	-	-0.41	-	-10.35
22 Pulse Moong	0.2336	228.62	230.89	267.93	-	-0.98	-	-14.67
23 Pulse Mash (Washed)	0.2098	193.59	194.55	218.31	-	-0.49	-	-11.32
24 Pulse Gram	0.2361	238.30	241.04	163.07	-	-1.14	+	46.13
25 Gram Whole	0.1616	229.65	229.76	185.26	-	-0.05	+	23.96
26 Beans	0.0269	207.20	205.15	173.25	+	1.00	+	19.60
27 Potatoes	0.4699	201.64	189.45	209.66	+	6.43	-	-3.83
28 Onion	0.5340	197.41	154.19	134.96	+	28.03	+	46.27
29 Tomatoes	0.4419	196.52	92.84	110.01	+	111.6	+	78.64
30 Fresh Vegetables	1.6802	172.97	176.65	182.59	-	-2.08	-	-5.27
31 Sugar	1.0445	195.29	197.18	266.42	-	-0.96	-	-26.70
32 Gur	0.0220	222.88	221.22	271.10	+	0.75	-	-17.79
33 Honey	0.0446	237.13	237.13	195.85	+	0.00	+	21.08
34 SweetMeat	0.2483	201.85	200.89	181.24	+	0.48	+	11.37
35 Beverages	1.1990	170.95	168.43	157.06	+	1.50	+	8.84
36 Jam, Tomato Ketchup & Pickles	0.2454	173.19	172.43	166.77	+	0.44	+	3.85
37 Condiments	0.2656	211.99	210.32	177.66	+	0.79	+	19.32
38 Spices	0.5441	267.12	268.98	237.29	-	-0.69	+	12.57
39 Tea	0.8377	202.38	201.61	199.84	+	0.38	+	1.27
Alcoholic Beverages, Tobacco	1.4135	189.91	189.36	160.77	+	0.29	+	18.13
40 Cigarettes	1.3906	190.12	189.57	160.76	+	0.29	+	18.26
41 Betel Leaves & Nuts	0.0229	177.28	176.60	161.31	+	0.39	+	9.90
Clothing & Footwear	7.5708	167.23	165.67	144.70	+	0.94	+	15.57
42 Cotton Cloth	1.7286	156.24	155.55	143.76	+	0.44	+	8.68
43 Woolen Cloth	0.8759	185.59	184.64	156.43	+	0.51	+	18.64
44 Readymade Garments	0.9739	168.36	164.95	141.95	+	2.07	+	18.61
45 Woolen Readymade Garments	0.3964	161.44	161.83	138.77	-	-0.24	+	16.34
46 Hosiery	0.5094	175.66	173.15	153.36	+	1.45	+	14.54
47 Dopatta	0.4412	180.00	178.69	151.28	+	0.73	+	18.98
48 Cleaning and Laundry	0.2110	185.07	182.46	153.99	+	1.43	+	20.18
49 Tailoring	0.8840	199.50	195.36	168.69	+	2.12	+	18.26
50 Footwear	1.5504	142.67	142.27	122.69	+	0.28	+	16.28

Annexure A: Consumer Price Index Numbers by Commodity Groups & Commodities (2007 - 2008 = 100)

Item and Specification	Weight	Index Numbers			% Change in Aug 2012 Over	
		Aug 2012	Jul 2012	Aug 2011	Jul 2012	Aug 2011
Housing, Water, Elec., Gas, Other	29.4149	147.95	147.92	141.69	+ 0.02	+ 4.42
51 House Rent	21.8149	137.02	137.02	128.63	+ 0.00	+ 6.52
52 Construction Input Items	0.5623	199.78	198.90	175.69	+ 0.44	+ 13.71
53 Construction Wage Rates	0.3331	168.30	167.76	148.52	+ 0.32	+ 13.32
54 Water Supply	0.4971	133.23	133.23	123.01	+ 0.00	+ 8.31
55 Electricity	4.3985	196.37	196.37	168.93	+ 0.00	+ 16.24
56 Gas	1.5756	134.34	134.34	232.00	+ 0.00	- -42.09
57 Kerosene Oil	0.0057	253.42	243.58	228.72	+ 4.04	+ 10.80
58 Firewood Whole	0.2277	226.19	225.49	186.23	+ 0.31	+ 21.46
Furnished H.Hold Equip. & House	4.2082	174.05	174.01	148.31	+ 0.02	+ 17.36
59 Furniture	0.3315	164.07	163.36	143.22	+ 0.43	+ 14.56
60 Household Textiles	0.6489	170.63	170.35	146.29	+ 0.16	+ 16.64
61 Household Equipment	0.5936	155.95	155.52	145.99	+ 0.28	+ 6.82
62 Utensils	0.3212	172.04	173.16	141.78	- -0.65	+ 21.34
63 Plastic Products	0.2547	173.77	173.73	156.73	+ 0.02	+ 10.87
64 Washing Soaps & Detergents	0.7893	189.11	189.47	164.98	- -0.19	+ 14.63
65 Sewing Needle & Dr Cell	0.1496	148.18	148.64	133.22	- -0.31	+ 11.23
66 Household Servant	1.0432	181.54	181.30	141.03	+ 0.13	+ 28.72
67 Marriage Hall Charges	0.0762	189.00	190.06	161.65	- -0.56	+ 16.92
Health	2.1868	152.39	149.84	131.80	+ 1.70	+ 15.62
68 Drugs & Medicines	1.2667	135.65	132.72	120.59	+ 2.21	+ 12.49
69 Medical Equipments	0.0080	191.94	189.54	169.05	+ 1.27	+ 13.54
70 Doctor (MBBS) Clinic Fee	0.5904	187.93	185.15	153.58	+ 1.50	+ 22.37
71 Medical Tests	0.3217	152.08	151.52	135.01	+ 0.37	+ 12.64
Transport	7.2023	186.61	178.58	161.69	+ 4.50	+ 15.41
72 Motor Vehicles	0.6630	150.97	150.32	136.84	+ 0.43	+ 10.33
73 Motor Vehicle Accessories	0.2439	203.89	203.03	177.26	+ 0.42	+ 15.02
74 Motor Fuel	3.0269	183.29	164.31	157.72	+ 11.55	+ 16.21
75 Mechanical Service	0.4552	179.46	179.09	151.43	+ 0.21	+ 18.51
76 Motor Vehicle Tax	0.1099	152.02	152.02	119.80	+ 0.00	+ 26.89
77 Transport Services	2.7034	200.12	200.29	174.25	- -0.08	+ 14.85
Communication	3.2198	123.56	123.56	123.34	+ 0.00	+ 0.18
78 Postal Services	0.0662	171.37	171.37	163.05	+ 0.00	+ 5.10
79 Communication & Apparatus	3.1536	122.55	122.55	122.50	+ 0.00	+ 0.04
Recreation & Culture	2.0227	165.19	164.63	139.07	+ 0.34	+ 18.78
80 Recreation & Culture	0.8634	121.64	121.45	114.75	+ 0.16	+ 6.00
81 Text Books	0.5706	230.37	230.22	164.00	+ 0.07	+ 40.47
82 Newspapers	0.1934	154.22	149.97	141.92	+ 2.83	+ 8.67
83 Stationery	0.3953	171.61	171.42	154.81	+ 0.11	+ 10.85
Education	3.9431	153.60	152.71	139.75	+ 0.58	+ 9.91
84 Education	3.9431	153.60	152.71	139.75	+ 0.58	+ 9.91
Restaurants & Hotels	1.2286	196.56	196.24	178.46	+ 0.16	+ 10.14
85 Readymade Food	1.2286	196.56	196.24	178.46	+ 0.16	+ 10.14
Miscellaneous Goods & Services	2.7550	192.44	190.67	172.21	+ 0.93	+ 11.75
86 Personal Care	1.4935	175.58	174.64	152.78	+ 0.54	+ 14.92
87 Cosmetics	0.3853	148.35	148.03	132.99	+ 0.22	+ 11.55
88 Blades	0.0322	169.56	168.82	152.27	+ 0.44	+ 11.35
89 Personal Equipments	0.8440	243.27	239.33	225.24	+ 1.65	+ 8.00

Annexure B: Wholesale Price Indices by Major Groups and Commodities

(2007 - 2008 = 100)

Item and Specification	Weight	Index Numbers			% Change in Aug 2012 Over			
		Aug 2012	Jul 2012	Aug 2011	Jul 2012	Aug 2012	Aug 2011	2011
General	100.0000	191.99	190.05	178.24	+	1.02	+	7.71
Agriculture Forestry &	25.7674	196.79	197.57	189.98	-	0.39	+	3.58
001 Wheat	0.6297	168.38	164.32	156.81	+	2.47	+	7.38
002 Maize	0.6764	170.14	166.89	169.61	+	1.95	+	0.31
003 Rice	2.4413	158.39	157.90	144.66	+	0.31	+	9.49
004 Sorghum/Jowar	0.0214	201.88	201.88	178.57	+	0.00	+	13.05
005 Millet/Bajra	0.0374	179.34	176.57	159.94	+	1.57	+	12.13
006 Vegetables	1.2441	210.80	185.97	177.31	+	13.35	+	18.89
007 Fresh Fruits	1.5144	280.12	287.82	187.76	-	2.68	+	49.19
008 Dry Fruits	0.2478	174.44	173.89	188.35	+	0.32	-	7.39
009 Cotton Seeds	1.1511	174.78	181.23	196.72	-	3.56	-	11.15
010 Other Oil Seeds	0.0722	176.96	174.82	162.07	+	1.22	+	9.19
011 Edible Roots/Potatoes	0.2540	195.16	178.09	224.71	+	9.59	-	13.15
012 Stimulant and Spice Crops	0.1634	166.85	170.53	205.61	-	2.16	-	18.85
013 Pulses	0.4901	219.37	221.59	203.30	-	1.00	+	7.90
014 Sugar Crops	1.0725	267.92	267.92	253.58	+	0.00	+	5.66
015 Fibre Crops	5.3169	186.59	194.22	234.75	-	3.93	-	20.52
016 Unmanufactured Tobacco	0.0742	167.67	167.67	168.65	+	0.00	-	0.58
017 Poultry	0.5633	185.32	222.42	208.01	-	16.68	-	10.91
018 Raw Milk from Bovine Animals	7.0279	208.85	207.47	185.28	+	0.67	+	12.72
019 Eggs	0.5034	161.94	155.50	168.77	+	4.14	-	4.05
020 Raw Animal Materials/Wool	0.0351	134.22	135.38	132.25	-	0.86	+	1.49
021 Hides and Fur Skins, Raw	0.4834	137.25	137.11	121.32	+	0.10	+	13.13
022 Fuel Wood in Logs	0.0179	203.50	203.50	178.37	+	0.00	+	14.09
023 Fish Live Fresh or Chilled	1.7295	175.63	171.26	136.10	+	2.55	+	29.04
Ores/Minerals, Elec., Gas &	12.0389	207.36	206.19	170.01	+	0.57	+	21.97
024 Coal not Agglomerated	0.7508	196.08	196.08	125.49	+	0.00	+	56.25
025 Natural Gas Liquified	5.7385	191.36	188.89	179.82	+	1.31	+	6.42
026 Salt and Pure Sodium Chloride	0.0584	162.41	165.22	144.01	-	1.70	+	12.78
027 Electrical Energy	5.4912	226.10	226.10	166.13	+	0.00	+	36.10
Food, Beverages, Tobacco, Tea	31.1122	183.90	182.41	176.26	+	0.82	+	4.33
Food Products, Beverages	20.0718	188.39	187.11	178.64	+	0.68	+	5.46
028 Meat of Animals	3.4559	225.92	225.25	199.71	+	0.30	+	13.12
029 Vegetables and Fruit Juice	0.0058	181.33	179.40	172.84	+	1.08	+	4.91
030 Dried Fruits and Nuts	0.1733	212.89	207.20	189.49	+	2.75	+	12.35
031 Fruit Juices	0.3880	156.91	156.40	153.15	+	0.33	+	2.46
032 Vegetable Oils Refined	1.9242	157.66	158.08	154.78	-	0.27	+	1.86
033 Vegetable Ghee	1.5632	144.58	145.30	140.73	-	0.50	+	2.74
034 Oil Cakes	0.9611	155.00	148.24	158.07	+	4.56	-	1.94
035 Processed Liquid Milk	4.4437	205.63	202.74	172.50	+	1.43	+	19.21
036 Milk and Cream in Solid Form	0.0316	169.45	169.39	180.03	+	0.04	-	5.88
037 Ice Cream	0.0047	170.00	170.00	153.62	+	0.00	+	10.66
038 Dairy Products N.E.C	0.0117	204.36	203.56	171.36	+	0.39	+	19.26
039 Wheat Flour	2.3034	155.10	153.66	147.54	+	0.94	+	5.12
040 Other Cereal Flour	0.0604	210.99	213.80	146.64	-	1.31	+	43.88
041 Sugar Refined	1.7975	204.68	203.40	280.55	+	0.63	-	27.04
042 Chocolate	0.0139	99.19	99.19	101.46	+	0.00	-	2.24
043 Sugar Confectionary	0.0738	100.40	100.40	100.89	+	0.00	-	0.49
044 Coffee and Tea	0.7303	190.97	191.91	189.83	-	0.49	+	0.60
045 Spices	0.1449	304.33	305.49	208.03	-	0.38	+	46.29
046 Other Food Products	0.0336	317.63	314.93	294.55	+	0.86	+	7.84
047 Mineral Water	0.0207	166.05	165.88	160.81	+	0.10	+	3.26
048 Beverages	0.6303	135.30	135.30	130.69	+	0.00	+	3.53
049 Tobacco Products	1.2998	208.80	208.80	177.98	+	0.00	+	17.32
Textiles & Apparels	10.3289	179.69	177.68	176.23	+	1.13	+	1.96
050 Cotton Yarn	5.2491	200.46	198.24	205.27	+	1.12	-	2.34
051 Nylon Yarn	0.1719	176.45	175.86	194.90	+	0.34	-	9.47
052 Blended Yarn	0.1689	187.05	186.60	210.43	+	0.24	-	11.11
053 Woven Fabrics	0.0128	169.72	169.72	144.44	+	0.00	+	17.50
054 Cotton Fabrics	0.6343	174.86	174.86	159.92	+	0.00	+	9.34
055 Other Fabrics	1.1016	165.74	165.46	144.15	+	0.17	+	14.98
056 Silk and Reyon Fabrics	0.7350	143.08	142.47	137.48	+	0.43	+	4.07
057 Towels	0.1235	193.36	192.17	180.25	+	0.62	+	7.27

Annexure B: Wholesale Price Indices by Major Groups and Commodities

(2007 - 2008 = 100)

Item and Specification	Weight	Index Numbers			% Change in Aug 2012 Over			
		Aug 2012	Jul 2012	Aug 2011	Jul 2012	Aug 2011	Aug 2011	Aug 2011
058 Blankets	0.0029	165.83	164.83	137.48	+	0.61	+	20.62
059 Bed Sheets	0.0913	189.27	185.57	155.69	+	1.99	+	21.57
060 Quilts	0.0019	147.05	147.05	139.42	+	0.00	+	5.47
061 Woolen Carpets	0.0383	106.55	106.55	107.14	+	0.00	-	0.55
062 Synthetic Carpets	0.0566	128.41	128.41	155.52	+	0.00	-	17.43
063 Hosiery Products	0.8832	164.85	164.70	148.81	+	0.09	+	10.78
064 Readymade Garments	1.0576	134.39	127.25	122.06	+	5.61	+	10.10
Leather Products	0.7115	118.56	118.56	109.33	+	0.00	+	8.44
065 Leather without Hair	0.2973	109.83	109.83	107.45	+	0.00	+	2.21
066 Other Leather N.E.C	0.2567	122.57	122.57	116.33	+	0.00	+	5.36
067 Footwears	0.1575	128.50	128.50	101.48	+	0.00	+	26.63
Other Transportable Goods	22.3659	202.63	195.56	184.17	+	3.62	+	10.02
068 Timber	0.0165	145.58	145.11	135.31	+	0.32	+	7.59
069 Printing Paper	0.4279	153.92	153.92	118.38	+	0.00	+	30.02
070 Hard Board	0.1579	166.67	166.67	141.67	+	0.00	+	17.65
071 Coke	0.2797	163.45	163.45	155.28	+	0.00	+	5.26
072 Motor Spirit	1.5336	160.78	143.91	143.22	+	11.72	+	12.26
073 Diesel Oil	5.2664	251.19	232.99	225.88	+	7.81	+	11.21
074 Kerosine Oil	0.2151	252.20	232.52	230.92	+	8.46	+	9.22
075 Furnace Oil	3.2664	199.36	189.21	186.14	+	5.36	+	7.10
076 Mobil Oil	0.7114	179.57	179.57	170.23	+	0.00	+	5.49
077 Chemicals	1.7720	145.05	146.39	139.77	-	0.92	+	3.78
078 Dyeing Material	0.1539	104.26	104.26	106.14	+	0.00	-	1.77
079 Fertilizers	2.8657	261.86	261.59	244.23	+	0.10	+	7.22
080 Pesticides	0.2763	184.15	184.25	161.30	-	0.05	+	14.17
081 Insecticides	0.1276	117.64	117.64	128.40	+	0.00	-	8.38
082 Paints and Varnishes	0.1916	233.80	233.80	176.38	+	0.00	+	32.55
083 Medicines	1.1428	134.51	134.27	115.90	+	0.18	+	16.06
084 Soaps and Detergents	0.8168	157.22	157.12	144.47	+	0.06	+	8.83
085 Auto Tyres	0.2703	176.49	176.49	165.78	+	0.00	+	6.46
086 Plastic Products	0.4550	191.29	191.18	167.81	+	0.06	+	13.99
087 Glass sheets	0.2089	183.78	183.78	159.49	+	0.00	+	15.23
088 Other Glass Articles	0.1635	217.98	217.98	192.36	+	0.00	+	13.32
089 Ceramics and Sanitary Fixture	0.0244	154.64	150.87	130.68	+	2.50	+	18.33
090 Bricks, Blocks and Tiles	0.1566	171.37	170.40	155.42	+	0.57	+	10.26
091 Cement	1.8145	180.22	180.22	156.55	+	0.00	+	15.12
092 Bed Foam	0.0006	139.83	133.83	121.17	+	4.48	+	15.40
093 Matches	0.0505	122.82	122.82	115.66	+	0.00	+	6.19
Metal Product, Machinery &	8.7156	158.17	158.63	146.74	-	0.29	+	7.79
094 Pig Iron	0.0593	128.97	128.97	128.97	+	0.00	+	0.00
095 Steel Bar and Sheets	1.4022	138.84	139.57	130.79	-	0.52	+	6.15
096 Pipe Fittings	0.0780	142.07	141.04	138.68	+	0.73	+	2.44
097 Steel Products	0.3879	160.60	160.53	139.19	+	0.04	+	15.38
098 Engines and Motors	0.0046	109.07	109.07	109.07	+	0.00	+	0.00
099 Vacuum Pumps	0.0155	115.39	115.39	115.39	+	0.00	+	0.00
100 Air Conditioners	0.0049	172.67	172.67	162.61	+	0.00	+	6.19
101 Cultivators	0.0551	184.66	184.66	184.66	+	0.00	+	0.00
102 Chuff Cutter	0.1293	138.54	138.54	131.08	+	0.00	+	5.69
103 Tractors	0.0028	161.96	161.96	180.89	+	0.00	-	10.46
104 Lathe Machines	0.0525	147.68	147.68	147.51	+	0.00	+	0.12
105 Concrete Mixture	0.0107	138.83	138.83	138.83	+	0.00	+	0.00
106 Fridge,WashM,SewM,Fans,Iro	1.1645	164.34	164.31	160.46	+	0.02	+	2.42
107 Electric Wires	0.0912	159.57	163.80	152.67	-	2.58	+	4.52
108 Lighting Equipments	1.4431	144.85	146.79	130.07	-	1.32	+	11.36
109 Radio and Television	0.1843	132.73	132.73	128.54	+	0.00	+	3.26
110 Motor Vehicles	0.0244	167.04	167.04	147.80	+	0.00	+	13.02
111 Motorcycles	0.2570	125.19	125.19	121.17	+	0.00	+	3.32
112 Bicycles	3.3483	175.08	175.08	160.14		0.00	+	9.33