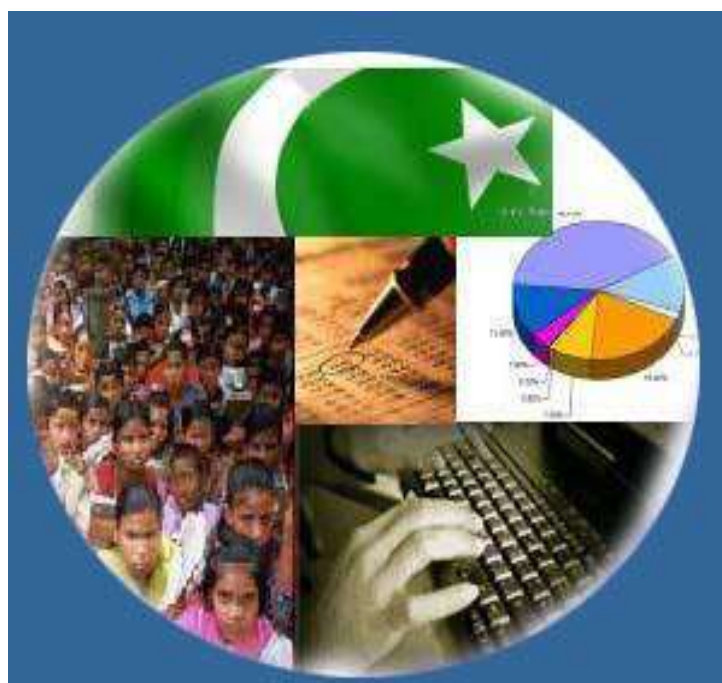




# Monthly Review on Price Indices



**September, 2021**  
**(Base Year 2015-16)**

**Government of Pakistan**  
**Ministry of Planning, Development & Special Initiatives**  
**Pakistan Bureau of Statistics**  
**Islamabad**



## Inflation in Brief

- CPI inflation General**, increased by 9.0% on year-on-year basis in September 2021 as compared to an increase of 8.4% in the previous month and 9.0% in September 2020. On month-on-month basis, it increased by 2.1% in September 2021 as compared to increase of 0.6% in the previous month and an increase of 1.5% in September 2020.
- CPI inflation Urban**, increased by 9.1% on year-on-year basis in September 2021 as compared to an increase of 8.3% in the previous month and 7.7% in September 2020. On month-on-month basis, it increased by 2.0% in September 2021 as compared to increase of 0.5% in the previous month and an increase of 1.3% in September 2020.
- CPI inflation Rural**, increased by 8.8% on year-on-year basis in September 2021 as compared to an increase of 8.4% in the previous month and 11.1% in September 2020. On month-on-month basis, it increased by 2.3% in September 2021 as compared to increase of 0.7% in the previous month and an increase of 2.0% in September 2020.
- SPI inflation** on YoY increased by 16.6% in September 2021 as compared to an increase of 15.9% a month earlier and an increase of 12.0% in September 2020. On MoM basis, it increased by 2.7% in September 2021 as compared to increase of 0.7% a month earlier and an increase of 2.1% in September 2020.
- WPI inflation** on YoY basis increased by 19.6% in September 2021 as compared to an increase of 17.1% a month earlier and an increase of 4.3% in September 2020. WPI inflation on MoM basis increased by 3.2% in September 2021 as compared to an increase of 1.2% a month earlier and an increase of 1.0% in corresponding month i.e. September 2020.
- Figures 1 and 2 show graphically the yearly data of Table 1.a for Urban and Rural CPI while Table 1.1 shows "Period Average" and "YoY" percent changes in indices of three years.

Table 1.a General Inflation (%) (Base 2015-16)																		
PERIOD	CPI														SPI**		WPI	
	General						Food				Non-Food							
	National		Urban		Rural		Urban		Rural		Urban		Rural		YoY	MoM	YoY	MoM
	YoY	MoM	YoY	MoM	YoY	MoM	YoY	MoM	YoY	MoM	YoY	MoM	YoY	MoM				
Nov-19	12.7	1.3	12.1	1.0	13.6	1.9	16.6	2.4	19.3	3.4	9.6	0.2	9.0	0.6	20.2	3.7	11.2	-0.8
Dec-19	12.6	-0.3	12.0	-0.4	13.6	-0.3	16.7	-1.7	19.7	-1.1	9.5	0.4	8.8	0.4	18.1	-2.0	12.4	-0.3
Jan-20	14.6	2.0	13.4	1.7	16.3	2.4	19.5	2.7	23.8	3.4	10.2	1.1	10.5	1.5	18.3	0.5	15.4	1.8
Feb-20	12.4	-1.0	11.2	-1.1	14.2	-1.0	15.2	-1.4	19.7	-1.6	9.1	-0.9	9.8	-0.4	14.5	-0.8	12.7	-0.7
Mar-20	10.2	0.0	9.3	0.1	11.7	-0.1	13.0	0.6	15.5	-0.3	7.3	-0.1	8.5	0.1	11.8	-0.3	9.3	-0.9
Apr-20	8.5	-0.8	7.7	-0.7	9.8	-1.1	10.4	-1.0	12.9	-1.7	6.2	-0.5	7.4	-0.5	9.3	-1.8	4.9	-2.0
May-20	8.2	0.3	7.3	0.3	9.7	0.3	10.6	1.5	13.7	1.4	5.4	-0.4	6.4	-0.5	11.0	2.2	1.5	-2.1
Jun-20	8.6	0.8	7.6	0.7	10.0	1.0	12.9	1.8	15.2	2.0	4.7	0.0	5.8	0.1	11.5	1.4	0.9	-0.3
Jul-20	9.3	2.5	7.8	2.2	11.6	3.0	15.1	3.0	17.8	4.0	3.9	1.7	6.5	2.2	13.7	3.0	3.2	5.4
Aug-20	8.2	0.6	7.1	0.8	9.9	0.4	11.3	-0.3	13.5	-0.9	4.8	1.5	6.8	1.5	11.7	0.9	3.3	1.3
<b>Sep-20</b>	<b>9.0</b>	<b>1.5</b>	<b>7.7</b>	<b>1.3</b>	<b>11.1</b>	<b>2.0</b>	<b>12.4</b>	<b>3.0</b>	<b>15.8</b>	<b>3.8</b>	<b>5.0</b>	<b>0.2</b>	<b>7.2</b>	<b>0.3</b>	<b>12.0</b>	<b>2.1</b>	<b>4.3</b>	<b>1.0</b>
Oct-20	8.9	1.7	7.3	1.3	11.3	2.4	13.9	2.8	17.7	4.3	3.6	0.3	5.8	0.5	12.3	3.0	5.1	2.9
Nov-20	8.3	0.8	7.0	0.6	10.5	1.1	13.0	1.6	16.1	2.0	3.4	0.1	5.5	0.2	9.9	1.1	5.0	-0.9
Dec-20	8.0	-0.7	7.0	-0.3	9.5	-1.2	12.6	-2.1	13.4	-3.4	3.8	0.7	6.1	1.0	9.1	-2.7	5.7	0.3
Jan-21	5.7	-0.2	5.0	-0.2	6.6	-0.3	7.3	-2.1	7.2	-2.2	3.7	1.1	6.1	1.5	7.7	-0.8	6.4	2.5
Feb-21	8.7	1.8	8.6	2.3	8.8	1.1	10.3	1.3	9.1	0.2	7.6	2.8	8.6	2.0	11.9	3.1	9.5	2.2
Mar-21	9.1	0.4	8.7	0.3	9.5	0.5	11.5	1.7	11.1	1.5	7.1	-0.6	8.1	-0.4	18.7	5.7	14.6	3.7
Apr-21	11.1	1.0	11.0	1.3	11.3	0.6	15.7	2.7	14.1	0.9	8.2	0.5	8.9	0.3	21.3	0.4	16.6	-0.4
May-21	10.9	0.1	10.8	0.2	10.9	-0.03	15.3	1.1	12.8	0.2	8.3	-0.3	9.2	-0.3	19.7	0.8	19.4	0.3
Jun-21	9.7	-0.3	9.6	-0.4	9.7	-0.1	11.0	-1.9	9.8	-0.8	8.8	0.5	9.7	0.6	17.6	-0.4	20.9	0.9
Jul-21	8.4	1.3	8.7	1.29	8.0	1.4	9.4	1.5	7.3	1.6	8.2	1.1	8.7	1.2	16.2	1.8	17.3	2.3
<b>Aug-21</b>	<b>8.4</b>	<b>0.6</b>	<b>8.3</b>	<b>0.5</b>	<b>8.4</b>	<b>0.7</b>	<b>10.2</b>	<b>0.5</b>	<b>9.1</b>	<b>0.8</b>	<b>7.2</b>	<b>0.5</b>	<b>7.7</b>	<b>0.6</b>	<b>15.9</b>	<b>0.7</b>	<b>17.1</b>	<b>1.2</b>
<b>Sep-21</b>	<b>9.0</b>	<b>2.1</b>	<b>9.1</b>	<b>2.0</b>	<b>8.8</b>	<b>2.3</b>	<b>10.8</b>	<b>3.6</b>	<b>9.1</b>	<b>3.7</b>	<b>8.1</b>	<b>1.1</b>	<b>8.5</b>	<b>1.0</b>	<b>16.6</b>	<b>2.7</b>	<b>19.6</b>	<b>3.2</b>

\*\* SPI for quintile 1. Digits 0.0\* are due to rounding off.

### Core inflation (NFNE)

7. Measured by **non-food non-energy Urban** increased by 6.4% on (YoY) basis in September, 2021 as compared to an increase of 6.3% in the previous month and 5.5% in September, 2020. On (MoM) basis, it increased by 0.4% in September, 2021 as compared to increase of 0.2% in previous month, and an increase of 0.3% in corresponding month of last year i.e. September, 2020.
8. Measured by **non-food non-energy Rural** increased by 6.2% on (YoY) basis in September, 2021 as compared to an increase of 6.2% in the previous month and 7.8% in September, 2020. On (MoM) basis, it increased by 0.5% in September, 2021 as compared to an increase of 0.2% in previous month, and an increase of 0.4% in corresponding month of last year i.e. September, 2020.

### Core inflation (Trimmed)

9. Measured by 20% **weighted trimmed mean Urban** increased by 8.7% on (YoY) basis in September, 2021 as compared to 7.8% in the previous month and 7.1% in September, 2020. On (MoM) basis, it increased by 0.9% in September, 2021 as compared to an increase of 0.4% in the previous month and an increase of 0.4% in corresponding month of last year i.e. September, 2020.
10. Measured by 20% **weighted trimmed mean Rural** increased by 8.2% on (YoY) basis in September, 2021 as compared to 7.8% in the previous month and by 10.0% in September, 2020. On (MoM) basis, it increased by 1.2% in September, 2021 as compared to an increase of 0.6% in the previous month and an increase of 0.9% in corresponding month of last year i.e. September, 2020.

**Table 1.b Core Inflation (%) (Base 2015-16)**

Period	NFNE				Trimmed			
	Urban		Rural		Urban		Rural	
	YoY	MoM	YoY	MoM	YoY	MoM	YoY	MoM
<b>Sep-20</b>	<b>5.5</b>	<b>0.3</b>	<b>7.8</b>	<b>0.4</b>	<b>7.1</b>	<b>0.4</b>	<b>10.0</b>	<b>0.9</b>
Oct-20	5.6	0.6	7.6	0.6	6.5	0.6	9.5	1.1
Nov-20	5.6	0.3	7.4	0.3	6.3	0.2	9.1	0.4
Dec-20	5.6	0.4	7.7	0.5	6.2	0.4	8.8	0.6
Jan-21	5.4	0.9	7.8	1.1	5.7	1.0	8.1	1.2
Feb-21	6.4	1.1	7.7	0.5	7.9	1.0	9.2	0.5
Mar-21	6.3	0.2	7.3	0.3	8.1	0.4	9.4	0.3
Apr-21	7.0	0.9	7.7	0.7	9.8	0.6	10.6	0.2
May-21	6.8	0.2	7.6	0.3	10.0	0.2	10.3	0.4
Jun-21	6.7	0.3	7.3	0.4	9.4	0.3	9.8	0.6
Jul-21	6.9	0.8	6.9	0.7	9.0	0.8	8.4	0.8
<b>Aug-21</b>	<b>6.3</b>	<b>0.2</b>	<b>6.2</b>	<b>0.2</b>	<b>7.8</b>	<b>0.4</b>	<b>7.8</b>	<b>0.6</b>
<b>Sep-21</b>	<b>6.4</b>	<b>0.4</b>	<b>6.2</b>	<b>0.5</b>	<b>8.7</b>	<b>0.9</b>	<b>8.2</b>	<b>1.2</b>

**Table 1.1 Period Average and Y-o-Y % Change**

INDEX	Average Jul - Sep % changes			Sep over Sep % changes		
	2021-2022	2020-2021	2019-2020	2021-2022	2020-2021	2019-2020
<b>CPI (National)</b>	8.58	8.84	10.08	8.98	9.04	11.37
<b>CPI(Urban)</b>	8.70	7.55	10.30	9.13	7.68	11.56
<b>CPI(Rural)</b>	8.40	10.85	9.74	8.77	11.12	11.10
<b>SPI</b>	16.25	12.46	11.88	16.63	11.98	14.67
<b>WPI</b>	18.02	3.58	14.41	19.61	4.26	15.90

Figure 1: Urban Inflation - YoY, Special Indices

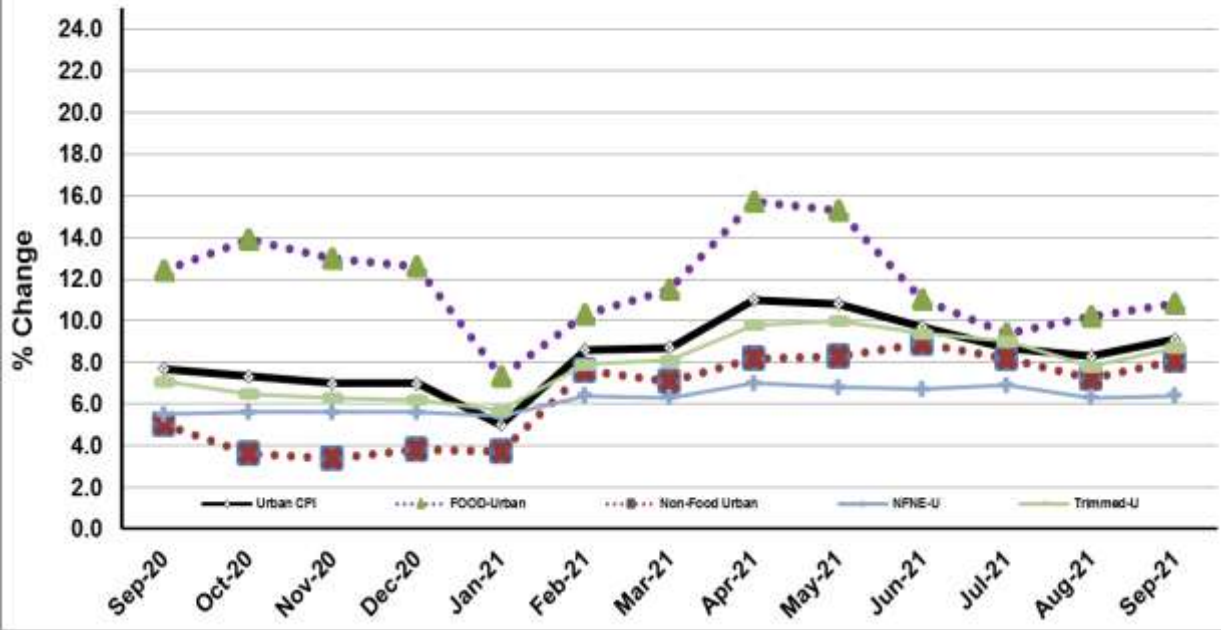


Figure 2: Rural Inflation - YoY, Special Indices

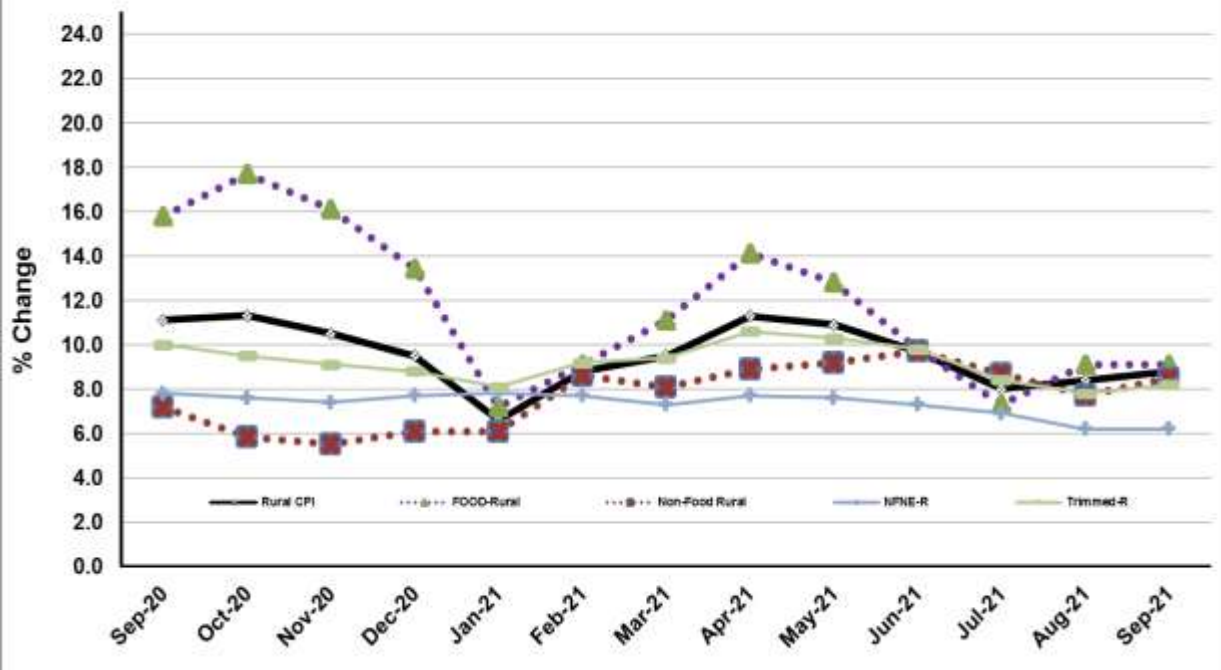


Figure 3: UCPI Inflation MoM, Special Indices

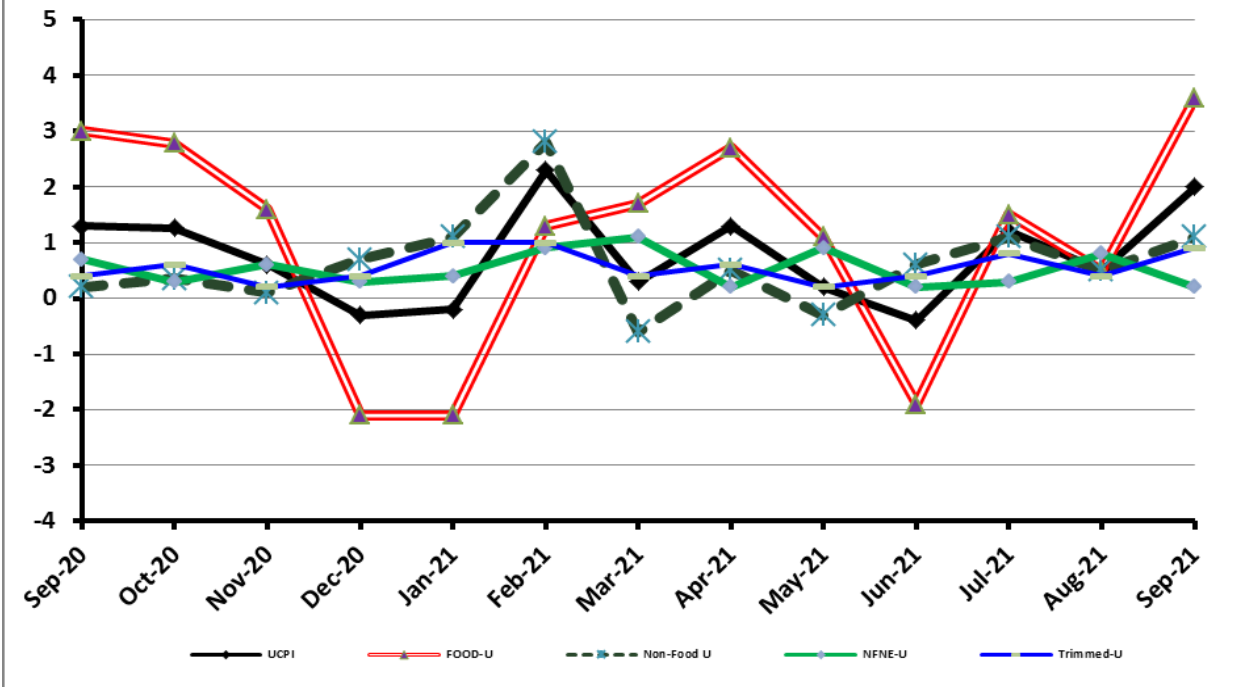


Figure 4: RPI Inflation MoM, Special Indices

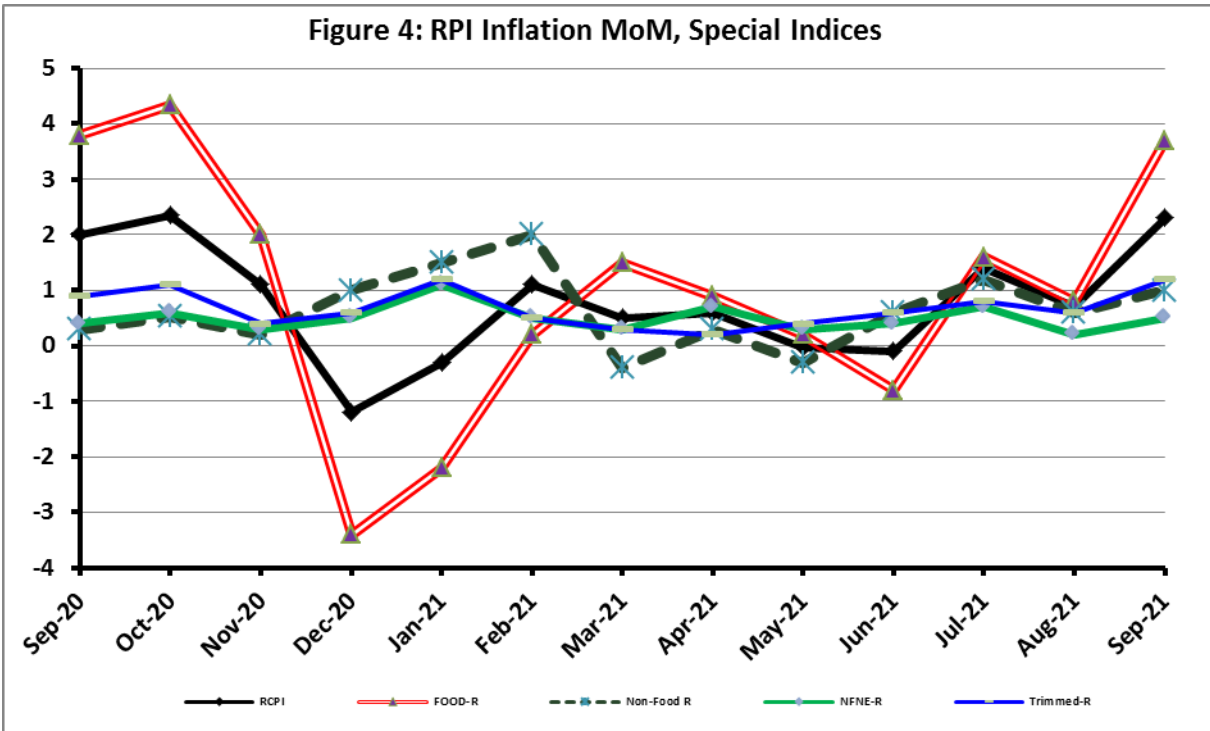


Figure 5: CPI Y.o.Y (National, Urban, Rural)

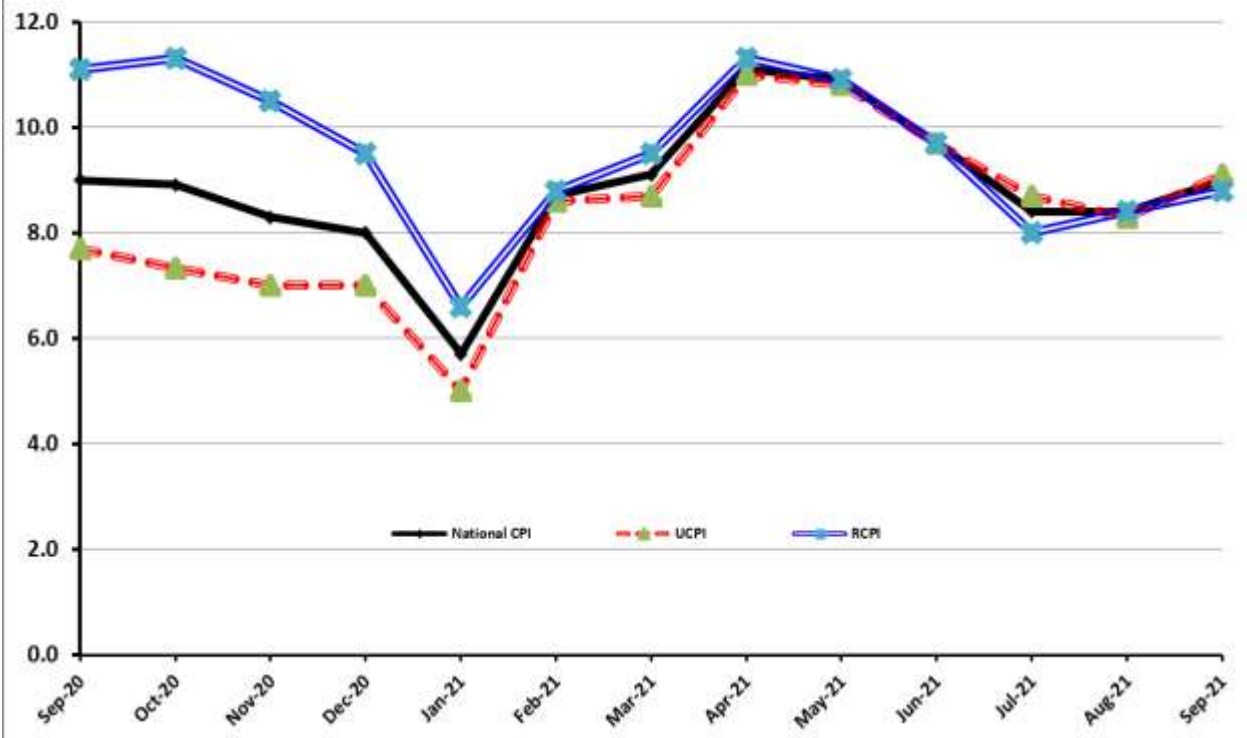
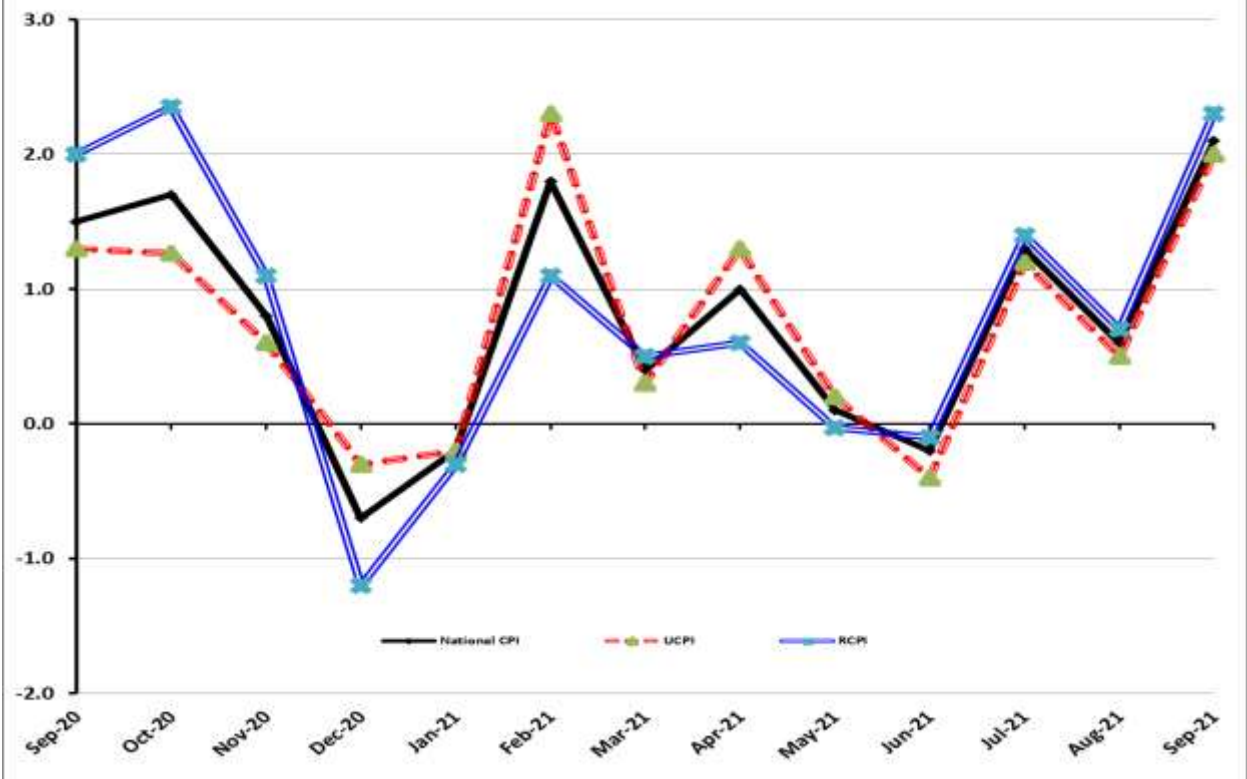


Figure 6: CPI M.o.M (National, Urban, Rural)



## I. National Consumer Price Index (N-CPI)

The **National Consumer Price Index** for **September 2021** is **increased** by 2.12% over **August 2021** and increased by 8.98% over corresponding month of the last year i.e. **September 2020**.

Table 1: Consumer Price Index (National) by Group of Commodities and Services (Base 2015-16)									
No	Group	Group Weight (%)	Indices			% Change September 2021 Over		Impact (In % points) September 2021 Over	
			Sep 21	Aug 21	Sep 20	Aug 21	Sep 20	Aug 21	Sep 20
	<b>General</b>	<b>100.00</b>	150.74	147.61	138.32	2.12	8.98	2.12	8.98
1.	Food & Non-alcoholic Bev.	34.58	158.85	152.71	144.14	4.02	10.21	1.44	3.68
	<i>Non-perishable Food Items</i>	29.60	160.25	153.89	140.76	4.13	13.84	1.27	4.17
	<i>Perishable Food Items</i>	4.99	150.57	145.68	164.19	3.35	-8.30	0.16	-0.49
2.	Alcoholic Bev. & Tobacco	1.02	145.23	144.69	142.40	0.37	1.99	0.00	0.02
3.	Clothing & Footwear	8.60	150.16	149.80	137.52	0.24	9.19	0.02	0.79
4.	Housing, Water, Electricity, Gas & Fuels	23.63	145.34	143.03	132.43	1.62	9.74	0.37	2.20
5.	Furnishing & Household Equipment Maintenance	4.10	145.02	143.92	132.74	0.76	9.25	0.03	0.36
6.	Health	2.79	155.97	155.18	144.46	0.51	7.97	0.01	0.23
7.	Transport	5.91	151.96	149.96	139.27	1.34	9.11	0.08	0.54
8.	Communication	2.21	109.97	109.96	107.01	0.01	2.77	0.00	0.05
9.	Recreation & Culture	1.59	130.73	129.15	122.32	1.22	6.87	0.02	0.10
10.	Education	3.79	146.68	146.65	142.93	0.02	2.63	0.00	0.10
11.	Restaurants & Hotels	6.92	145.96	144.32	135.42	1.14	7.78	0.08	0.53
12.	Miscellaneous	4.87	156.86	154.76	146.06	1.36	7.40	0.07	0.38



## II. Urban Consumer Price Index (UCPI)

The Urban Consumer Price Index of **September 2021** is increased by 2.01% over **August 2021** and increased by 9.13% over corresponding month of the last year i.e. **September 2020**.

Table 2: Consumer Price Index (Urban) by Group of Commodities and Services (Base 2015-16)

No	Group	Group Weight (%)	Indices			% Change September 2021 Over		Impact (In % points) September 2021 Over	
			Sep 21	Aug 21	Sep 20	Aug 21	Sep 20	Aug 21	Sep 20
	<b>General</b>	<b>100.00</b>	150.08	147.12	137.53	2.01	9.13	2.01	9.13
1.	Food & Non-alcoholic Bev.	30.42	158.53	152.49	142.73	3.96	11.07	1.25	3.49
	<i>Non-perishable Food Items</i>	25.97	160.03	153.60	138.80	4.19	15.30	1.13	4.01
	<i>Perishable Food Items</i>	4.46	149.79	146.03	165.67	2.57	-9.59	0.11	-0.51
2.	Alcoholic Bev.& Tobacco	0.85	154.23	153.94	150.34	0.19	2.59	0.00	0.02
3.	Clothing & Footwear	8.01	147.12	146.97	133.75	0.10	10.00	0.01	0.78
4.	Housing, Water, Electricity, Gas & Fuels	27.03	145.99	143.73	134.02	1.57	8.93	0.42	2.35
5.	Furnishing & Household Equip. & Maintenance	4.09	144.03	142.88	131.57	0.80	9.47	0.03	0.37
6.	Health	2.31	156.84	155.91	144.31	0.60	8.68	0.01	0.21
7.	Transport	6.14	153.57	151.29	140.06	1.51	9.65	0.09	0.60
8.	Communication	2.35	112.32	112.30	108.23	0.02	3.78	0.00	0.07
9.	Recreation & Culture	1.73	127.58	125.93	120.03	1.31	6.29	0.02	0.10
10.	Education	4.88	148.76	148.72	145.49	0.03	2.25	0.00	0.12
11.	Restaurants & Hotels	7.41	145.51	143.47	134.14	1.42	8.48	0.10	0.61
12.	Miscellaneous	4.77	156.29	154.10	144.68	1.42	8.02	0.07	0.40

Main contributors to month-on-month and year-on-year percentage changes are given below and detail is given in **Annexure-A**.

### 1. MONTH-ON-MONTH Top few commodities which varied from previous month are given below: -

#### FOOD

**Increased:** Chicken (42.04%), Onions (32.49%), Pulse masoor (15.70%), Eggs (14.43%), Wheat flour (9.69%), Wheat (7.31%), Gram whole (5.98%), Mustard oil (4.56%), Pulse gram (4.33%), vegetables (3.95%), Pulse mash (3.81%), Cooking oil (3.64%), Beans (3.35%), Vegetable ghee (3.20%), Sugar (3.04%), Tea (2.78%), Besan (2.37%) and Meat (2.20%).

**Decreased:** Tomatoes (18.90%), Pulse moong (4.02%) and Potatoes (2.62%).

#### NON-FOOD

**Increased:** Electricity charges (11.40%), Plastic products (3.65%), Motor fuel (1.67%), Washing soap/detergents (1.38%), Motor vehicle accessories (0.94%) and Woolen cloth (0.47%).

**Decrease:** Liquefied Hydrocarbons (7.22%).

### **YEAR-ON-YEAR: Top few commodities which varied from corresponding month of previous year i.e. September, 2020 are given below: -**

#### FOOD

**Increased:** Chicken (44.63%), Vegetable ghee (39.57%), Cooking oil (38.34%), Mustard oil (37.7%), Eggs (34.52%), Wheat flour (19.32%), Pulse masoor (18.63%), Meat (15.79%), Sugar (15.26%), Onions (14.14%), Gram whole (12.01%), Beans (11.49%), Fruits (10.79%) and Milk (9.48%).

**Decreased:** Potatoes (26.03%), Tomatoes (23.92%), Pulse moong (23.21%) and Vegetables (13.8%)

#### NON-FOOD

**Increased:** Liquefied Hydrocarbons (54.29%), Electricity charges (22.36%), Motor fuel (17.55%), Footwear (16.18%), Washing soap/detergents (12.32%), Household equipment's (11.89%), Woollen readymade garments (11.83%), Hosiery (11.26%) and Plastic products (9.96%).

### III. Rural Consumer Price Index (RCPI)

The Rural Consumer Price Index of September 2021 is increased by 2.29% over August 2021 and increased by 8.77% over corresponding month of the last year i.e. September 2020.

**Table 3: Consumer Price Index (Rural) by Group of Commodities and Services (Base 2015-16)**

No	Group	Group Weight (%)	Indices			% Change September 2021 Over		Impact (In % points) September 2021 Over	
			Sep 21	Aug 21	Sep 20	Aug 21	Sep 20	Aug 21	Sep 20
	<b>General</b>	<b>100.00</b>	151.74	148.34	139.51	2.29	8.77	2.29	8.77
1.	Food & Non-alcoholic Bev.	40.87	159.22	152.96	145.72	4.09	9.26	1.72	3.95
	<i>Non-perishable Food Items</i>	35.08	160.49	154.22	142.96	4.07	12.26	1.48	4.41
	<i>Perishable Food Items</i>	5.79	151.47	145.28	162.48	4.26	-6.78	0.24	-0.46
2.	Alcoholic Bev. & Tobacco	1.28	136.16	135.37	134.39	0.58	1.32	0.01	0.02
3.	Clothing & Footwear	9.48	154.03	153.41	142.32	0.40	8.23	0.04	0.80
4.	Housing, Water, Electricity, Gas & Fuels	18.49	143.90	141.47	128.93	1.72	11.61	0.30	1.98
5.	Furnishing & Household Equip. & Maintenance	4.10	146.50	145.48	134.49	0.70	8.93	0.03	0.35
6.	Health	3.51	155.10	154.46	144.60	0.41	7.26	0.02	0.26
7.	Transport	5.56	149.28	147.74	137.96	1.04	8.21	0.06	0.45
8.	Communication	1.99	105.80	105.80	104.84	0.00	0.92	0.00	0.01
9.	Recreation & Culture	1.38	136.71	135.26	126.67	1.07	7.93	0.01	0.10
10.	Education	2.13	139.52	139.52	134.08	0.00	4.06	0.00	0.08
11.	Restaurants & Hotels	6.19	146.78	145.85	137.74	0.64	6.56	0.04	0.40
12.	Miscellaneous	5.02	157.69	155.71	148.03	1.27	6.53	0.07	0.35

Main contributors to Month-on-Month and Year-on-Year percentage changes are given below and detail is given in **Annexure-B**.

#### 1. MONTH-ON-MONTH Top few commodities which varied from previous month are given below: -

##### FOOD

**Increased:** Chicken (47.95%), Onions (39.56%), Pulse Masoor (18.45%), Eggs (11.82%), Wheat Flour (9.4%), Gram Whole (8.78%), Wheat (7.01%), Vegetables (6.07%), Pulse Gram (5.39%), Besan (4.47%), Cooking oil (3.93%), Vegetable ghee (3.26%), Sugar (2.83%), Mustard oil (2.17%) and Meat (1.75%).

**Decreased:** Tomatoes (8.56%), Potatoes (5.65%), Pulse Moong (2.80%), Condiments and Spices (2.09%) and Fruits (1.26%).

##### NON-FOOD

**Increased:** Electricity Charges (11.4%), Motor Vehicles Accessories (1.33%), Woolen Cloth (1.17%), Motor Fuels (1.16%), Washing Soaps/Detergents (0.86%) and Hosiery (0.73%).

**Decreased:** Liquefied Hydrocarbons (4.56%)

#### 2. YEAR-ON-YEAR: Top few commodities which varied from corresponding month of previous year i.e. September 2020 are given below: -

##### FOOD

**Increased:** Chicken (49.36%), Cooking oil (44.95%), Vegetable ghee (41.87%), Mustard oil (37.24%), Eggs (32.51%), Onions (32.33%), Pulse Masoor (21.37%), Gram Whole (18.39%), Meat (17.97%), Wheat Flour (15.68%), Sugar (13.89%), Fruits (13.69%) and Besan (7.83%).

**Decreased:** Pulse Moong (27.79%), Potatoes (22.67%), Tomatoes (16.56%), Condiments and Spices (12.43%) and Vegetables (11.41%).

##### NON-FOOD

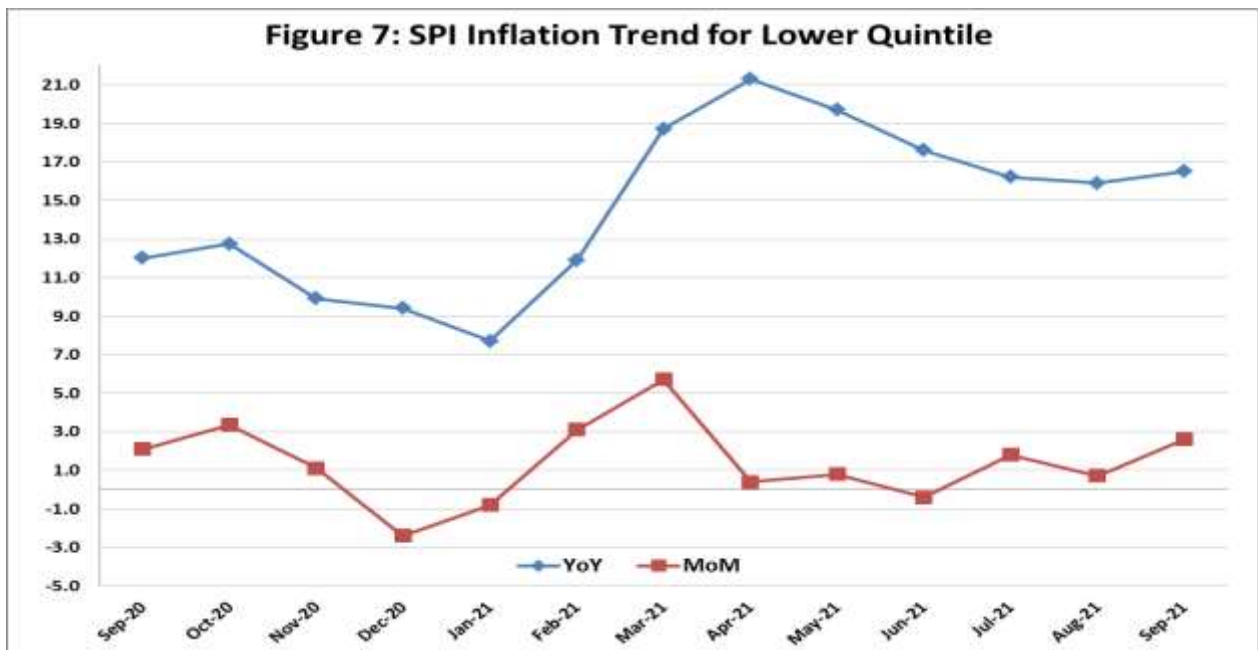
**Increased:** Liquefied Hydrocarbons (42.09%), Electricity Charges (22.36%), Motor Fuels (15.91%), Hosiery (13.01%), Clinic Fee (11.42%), Woolen Cloth (11.23%), Construction Items (11.15%), Washing Soaps/Detergents (10.54%) and Woolen Readymade Garments (10.01%).

#### IV. Sensitive Price Indicator

Quintile-wise percentage changes YoY and MoM are given below in Table 4. The series from September 2020 to September 2021 is also graphed below in Figure 7.

Table 4: Sensitive Price Indicator (Base 2015-16)					
Quintiles	Indices			% Change September 2021 Over	
	September 2021	August, 2021	September 2020	August, 2021	September, 2020
1	167.83	163.39	143.90	2.72	16.63
2	157.28	152.44	138.63	3.18	13.45
3	158.26	153.77	139.94	2.92	13.09
4	154.35	150.08	136.36	2.85	13.19
5	155.83	151.79	137.43	2.66	13.39
<b>Combined</b>	155.94	151.62	137.04	2.85	13.79

Table 4.1 : Weekly Percentage Change of SPI During September - 2021					
Quintiles	% Change with Previous week				
	02-09-2021	09-09-2021	16-09-2021	23-09-2021	30-09-2021
Quintile 1	0.76	1.6	0.77	-0.15	-0.23
Combined	0.67	1.37	1.31	-0.07	-0.1



## V. Wholesale Price Index

The Wholesale Price Index for September, 2021 increased by 3.17% over August, 2021. It increased by 19.61% over the corresponding month of the last year i.e. September, 2020. YoY and MoM movements, from September, 2020 to September, 2021 are also graphed below in Figure 8.

**Table 5: Wholesale Price Index by Group of Commodities (Base 2015-16)**

No	Group	Group Weight (%)	Indices			% Change September 2021 Over		Impact (In % points) September 2021 Over	
			Sep 21	Aug 21	Sep 20	Aug 21	Sep 20	Aug 21	Sep 20
	<b>General</b>	<b>100.00</b>	175.20	169.82	146.48	3.17	19.61	3.17	19.61
1	Agriculture Forestry & Fishery	25.77	174.92	172.52	146.54	1.39	19.37	0.36	4.99
2	Ores/Minerals, Elec., Gas & Water	12.01	174.24	169.35	165.18	2.89	5.48	0.35	0.74
3	Food, Beverages, Tobacco, Textiles & Leather Products	31.11	169.86	163.47	141.57	3.91	19.98	1.17	6.01
	i. Food Products, Beverages & Tobacco	20.07	163.60	159.78	140.17	2.39	16.72	0.45	3.21
	ii. Textiles & Apparels	10.33	185.33	173.51	145.84	6.81	27.08	0.72	2.78
	iii. Leather Products	0.71	122.09	122.09	118.88	0.00	2.70	0.00	0.02
4	Other Transportable Goods	22.40	185.27	176.15	143.73	5.18	28.90	1.20	6.35
5	Metal Product, Machinery & Equipment	8.72	170.50	168.82	145.10	1.00	17.51	0.09	1.51

Main contributors to month-on-month and year-on-year percentage changes are given below and detail is given in **Annexure-C**.

### 1. MONTH-ON-MONTH Top few commodities which varied from previous month are given below: -

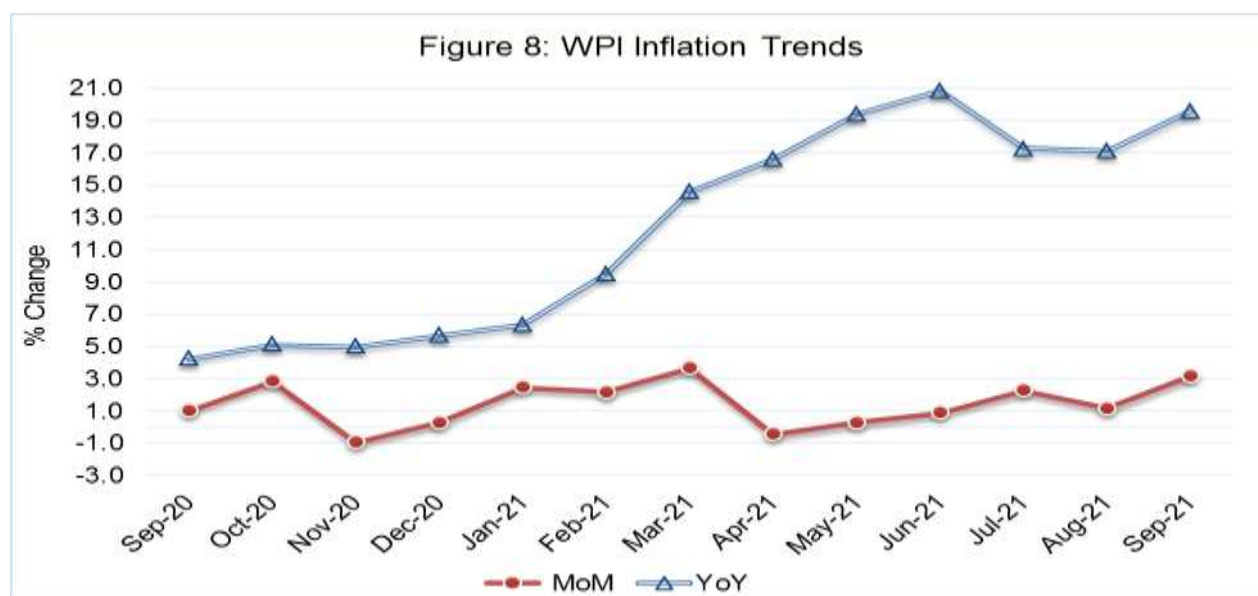
**Increased:** Poultry (47.42%), Eggs (16.17%), Furnace Oil (13.22%), Cotton Yarn (11.2%), Jowar (11.15%), Electrical charges (8.41%), Wheat Flour (7.82%), Wheat (6.70%), Fertilizers (6.02%), Pulses (4.90%), Vegetable Ghee (4.39%), Bajra (3.67%), Mobil Oil (3.41%) and Sugar (3.39%).

**Decreased:** Fruits (4.54%), Vegetables (1.55%) and Maize (0.77%).

### 2. YEAR-ON-YEAR Top few commodities which varied from **corresponding month of** previous year i.e. September, 2020 are given below: -

**Increased:** Bajra (94.07%), Fibre Crops (75.88%), Furnace Oil (68.32%), Vegetable Ghee (45.68%), Poultry (45.61%), Vegetable Oils (39.37%), Cotton Yarn (37.28%), Kerosene Oil (37.13%), Spices (36.86%), Eggs (35.81%), Fertilizers (28.50%), Diesel Oil (25.98%), Meat (19.50%), Maize (17.87%), Woven Fabrics (17.05%), Motor Spirit (16.78%) and Sugar (16.6%).

**Decreased:** Potatoes (32.28%), Stimulant & Spice Crops (26.12%) and Vegetables (21.05%).



**Annexure A:CPI (Urban) Index Numbers by Commodity Groups & Commodities (2015-16=100)**

Item and Specification	Weight	Index Numbers			% Change in Sep 2021 over			
		Sep 21	Aug 21	Sep 20	Aug 2021	Sep 2020		
<b>General</b>	<b>100.0000</b>	<b>150.08</b>	<b>147.12</b>	<b>137.53</b>	<b>+</b>	<b>2.01</b>	<b>+</b>	<b>9.13</b>
<b>Food and non-alcoholic Bevera</b>	<b>30.4215</b>	<b>158.53</b>	<b>152.49</b>	<b>142.73</b>	<b>+</b>	<b>3.96</b>	<b>+</b>	<b>11.07</b>
01 Wheat	0.6120	165.61	154.33	156.54	+	7.31	+	5.79
02 Wheat flour	3.0075	162.31	147.97	136.03	+	9.69	+	19.32
03 Wheat products	0.0936	163.94	161.02	139.80	+	1.81	+	17.27
04 Besan	0.0830	127.17	124.23	118.83	+	2.37	+	7.02
05 Rice	1.1804	146.91	146.82	137.42	+	0.06	+	6.91
06 Bakery and confectionary	0.4770	149.97	148.70	138.33	+	0.85	+	8.41
07 Nimco	0.1224	150.40	147.14	132.95	+	2.22	+	13.13
08 Meat	2.0411	178.55	174.71	154.20	+	2.20	+	15.79
09 Chicken	1.3631	153.89	108.34	106.40	+	42.04	+	44.63
10 Fish	0.3855	113.33	112.91	111.86	+	0.37	+	1.31
11 Milk fresh	7.1070	145.52	145.37	132.92	+	0.10	+	9.48
12 Milk products	0.6407	149.61	149.28	136.35	+	0.22	+	9.72
13 Milk powder	0.3106	142.02	140.36	132.88	+	1.18	+	6.88
14 Eggs	0.5083	205.35	179.46	152.65	+	14.43	+	34.52
15 Butter	0.0932	195.79	195.19	172.14	+	0.31	+	13.74
16 Mustard oil	0.0120	177.61	169.86	128.98	+	4.56	+	37.70
17 Cooking oil	1.1016	197.19	190.26	142.54	+	3.64	+	38.34
18 Vegetable ghee	1.0324	207.28	200.86	148.51	+	3.20	+	39.57
19 Dry fruits	0.3299	137.28	136.90	130.99	+	0.28	+	4.80
20 Fresh fruits	1.4363	121.00	120.29	109.22	+	0.59	+	10.79
21 Pulse masoor	0.1624	123.41	106.66	104.03	+	15.70	+	18.63
22 Pulse moong	0.1697	113.89	118.66	148.32	-	4.02	-	23.21
23 Pulse mash	0.1152	109.24	105.23	102.27	+	3.81	+	6.82
24 Pulse gram	0.1660	126.65	121.39	119.32	+	4.33	+	6.14
25 Gram whole	0.0912	136.93	129.20	122.25	+	5.98	+	12.01
26 Beans	0.0408	174.20	168.55	156.25	+	3.35	+	11.49
27 Potatoes	0.4496	200.66	206.06	271.28	-	2.62	-	26.03
28 Onions	0.5928	140.81	106.28	123.37	+	32.49	+	14.14
29 Tomatoes	0.3459	147.95	182.42	194.46	-	18.90	-	23.92
30 Fresh vegetables	1.5306	156.72	150.76	181.82	+	3.95	-	13.80
31 Sugar	1.1130	173.90	168.77	150.87	+	3.04	+	15.26
32 Gur	0.0379	156.29	153.52	144.31	+	1.80	+	8.30
33 Honey	0.1017	137.01	131.84	128.34	+	3.92	+	6.76
34 Sweetmeat	0.3535	157.45	156.91	144.79	+	0.34	+	8.74
35 Ice cream	0.1044	146.51	146.41	136.32	+	0.07	+	7.48
36 Condiments and Spices	1.3340	216.14	215.92	199.86	+	0.10	+	8.15
37 Dessert preparation	0.0419	133.27	133.21	125.99	+	0.05	+	5.78
38 Tea	0.8427	144.75	140.84	140.74	+	2.78	+	2.85
39 Beverages	0.8906	133.86	131.92	127.85	+	1.47	+	4.70
<b>Alcoholic Beverages, Tobacco</b>	<b>0.8540</b>	<b>154.23</b>	<b>153.94</b>	<b>150.34</b>	<b>+</b>	<b>0.19</b>	<b>+</b>	<b>2.59</b>
40 Cigarettes	0.7167	141.09	141.09	140.28	+	0.00	+	0.58
41 Pan prepared	0.1373	222.80	221.00	202.89	+	0.81	+	9.81
<b>Clothing and footwear</b>	<b>8.0096</b>	<b>147.12</b>	<b>146.97</b>	<b>133.75</b>	<b>+</b>	<b>0.10</b>	<b>+</b>	<b>10.00</b>
42 Cotton cloth	2.2227	150.57	150.56	137.16	+	0.01	+	9.78
43 Woolen cloth	0.8361	142.33	141.67	131.47	+	0.47	+	8.26
44 Readymade garments	1.3196	139.71	139.41	131.13	+	0.22	+	6.54
45 Woolen readymade garments	0.4307	142.21	142.21	127.17	+	0.00	+	11.83
46 Tailoring	1.0741	153.06	153.06	141.80	+	0.00	+	7.94
47 Hosiery	0.4070	145.10	144.77	130.41	+	0.23	+	11.26
48 Dopatta	0.1713	130.01	129.93	125.80	+	0.06	+	3.35
49 Cleaning and laundering	0.0665	148.68	148.59	142.15	+	0.06	+	4.59
50 Footwear	1.4816	150.81	150.78	129.81	+	0.02	+	16.18
<b>Housing, water, Elec., Gas an</b>	<b>27.0332</b>	<b>145.99</b>	<b>143.73</b>	<b>134.02</b>	<b>+</b>	<b>1.57</b>	<b>+</b>	<b>8.93</b>
51 House rent	19.2558	140.07	140.07	132.08	+	0.00	+	6.05
52 Construction input items	0.3765	159.30	158.57	146.96	+	0.46	+	8.40
53 Construction wage rates	0.2025	158.01	157.88	152.47	+	0.08	+	3.63
54 Water supply	0.5269	162.68	162.68	156.23	+	0.00	+	4.13
55 Garbage collection	0.1064	177.21	175.57	169.20	+	0.93	+	4.73
56 Electricity charges	4.5562	146.62	131.62	119.83	+	11.40	+	22.36
57 Gas charges	1.0807	216.94	216.94	216.94	+	0.00	+	0.00
58 Liquefied Hydrocarbons	0.5064	196.38	211.66	127.28	-	7.22	+	54.29
59 Solid Fuel	0.4218	120.78	120.79	114.70	-	0.01	+	5.30

**Annexure A:CPI (Urban) Index Numbers by Commodity Groups & Commodities (2015-16=100)**

Item and Specification	Weight	Index Numbers			% Change in Sep 2021 over		
		Sep 21	Aug 21	Sep 20	Aug 2021	Sep 2020	
<b><i>Furnishing and household equi</i></b>	<b>4.0937</b>	<b>144.03</b>	<b>142.88</b>	<b>131.57</b>	<b>+</b>	<b>0.80</b>	<b>+</b> <b>9.47</b>
60 Furniture and furnishing	0.4750	144.91	144.24	132.35	+	0.46	+ 9.49
61 Carpets	0.0308	113.92	113.69	112.12	+	0.20	+ 1.61
62 Household textiles	0.3420	135.57	135.54	127.04	+	0.02	+ 6.71
63 Household equipments	1.0032	147.60	146.49	131.92	+	0.76	+ 11.89
64 Plastic products	0.0536	131.04	126.43	119.17	+	3.65	+ 9.96
65 Major tools & equipments	0.0084	138.91	138.91	128.40	+	0.00	+ 8.19
66 Washing soap/detergents/match	1.4112	148.76	146.73	132.44	+	1.38	+ 12.32
67 Household servant	0.7695	136.10	135.87	132.74	+	0.17	+ 2.53
<b><i>Health</i></b>	<b>2.3098</b>	<b>156.84</b>	<b>155.91</b>	<b>144.31</b>	<b>+</b>	<b>0.60</b>	<b>+</b> <b>8.68</b>
68 Drugs and medicines	1.0735	156.28	155.75	142.68	+	0.34	+ 9.53
69 Therapeutic Appliances and Eq	0.0054	116.78	116.67	113.39	+	0.09	+ 2.99
70 Doctor (MBBS) clinic fee	0.4044	195.83	193.89	179.85	+	1.00	+ 8.89
71 Dental services	0.0156	128.98	128.98	121.35	+	0.00	+ 6.29
72 Medical tests	0.2367	134.86	134.84	130.30	+	0.01	+ 3.50
73 Hospitals services	0.5742	140.61	139.23	129.02	+	0.99	+ 8.98
<b><i>Transport</i></b>	<b>6.1368</b>	<b>153.57</b>	<b>151.29</b>	<b>140.06</b>	<b>+</b>	<b>1.51</b>	<b>+</b> <b>9.65</b>
74 Motor vehicles	0.8097	152.69	152.56	149.05	+	0.09	+ 2.44
75 Motor vehicle accessories	0.1941	145.70	144.34	132.52	+	0.94	+ 9.95
76 Motor fuel	2.9088	171.84	169.01	146.18	+	1.67	+ 17.55
77 Mechanical services	0.4290	139.13	139.00	132.38	+	0.09	+ 5.10
78 Motor vehicle tax	0.0482	136.37	136.37	126.72	+	0.00	+ 7.62
79 Transport services	1.7470	128.45	125.41	128.79	+	2.42	- 0.26
<b><i>Communication</i></b>	<b>2.3536</b>	<b>112.32</b>	<b>112.30</b>	<b>108.23</b>	<b>+</b>	<b>0.02</b>	<b>+</b> <b>3.78</b>
80 Postal services	0.0190	163.41	163.41	147.05	+	0.00	+ 11.13
81 Communication apparatus	0.4524	128.31	128.20	118.77	+	0.09	+ 8.03
82 Communication Services	1.8822	107.97	107.97	105.30	+	0.00	+ 2.54
<b><i>Recreation and culture</i></b>	<b>1.7301</b>	<b>127.58</b>	<b>125.93</b>	<b>120.03</b>	<b>+</b>	<b>1.31</b>	<b>+</b> <b>6.29</b>
83 Recreation and culture	0.6478	115.18	115.15	111.59	+	0.03	+ 3.22
84 Text books	0.6655	132.99	128.89	119.49	+	3.18	+ 11.30
85 Newspapers	0.0716	151.55	151.55	151.55	+	0.00	+ 0.00
86 stationery	0.3452	135.48	135.16	130.38	+	0.24	+ 3.91
<b><i>Education</i></b>	<b>4.8807</b>	<b>148.76</b>	<b>148.72</b>	<b>145.49</b>	<b>+</b>	<b>0.03</b>	<b>+</b> <b>2.25</b>
87 Education	4.8807	148.76	148.72	145.49	+	0.03	+ 2.25
<b><i>Restaurants and hotels</i></b>	<b>7.4050</b>	<b>145.51</b>	<b>143.47</b>	<b>134.14</b>	<b>+</b>	<b>1.42</b>	<b>+</b> <b>8.48</b>
88 Readymade food	5.5235	148.51	145.92	134.48	+	1.77	+ 10.43
89 Marriage Hall Charges	1.7514	138.12	137.97	134.64	+	0.11	+ 2.58
90 Accommodation Services	0.1301	117.69	113.30	112.72	+	3.87	+ 4.41
<b><i>Misc. goods and services</i></b>	<b>4.7720</b>	<b>156.29</b>	<b>154.10</b>	<b>144.68</b>	<b>+</b>	<b>1.42</b>	<b>+</b> <b>8.02</b>
91 Personal Grooming Services	0.8001	140.52	138.99	132.07	+	1.10	+ 6.40
92 Electrical Appliances for Per	0.0465	119.80	119.66	118.32	+	0.12	+ 1.25
93 Appliances/Articles/Products	2.9807	147.20	145.68	131.35	+	1.04	+ 12.07
94 Personal Effects n.e.c.	0.9447	200.13	195.18	198.70	+	2.54	+ 0.72

**Annexure B:CPI (Rural) Index Numbers by Commodity Groups & Commodities (2015-16=100)**

Item and Specification	Weight	Index Numbers			% Change in Sep 2021 over			
		Sep 21	Aug 21	Sep 20	Aug 2021	Sep 2020		
<b>General</b>	<b>100.0000</b>	<b>151.74</b>	<b>148.34</b>	<b>139.51</b>	<b>+</b>	<b>2.29</b>	<b>+</b>	<b>8.77</b>
<b>Food and non-alcoholic Bevera</b>	<b>40.8668</b>	<b>159.22</b>	<b>152.96</b>	<b>145.72</b>	<b>+</b>	<b>4.09</b>	<b>+</b>	<b>9.26</b>
01 Wheat	3.4736	164.58	153.80	159.34	+	7.01	+	3.29
02 Wheat Flour	3.4297	165.15	150.96	142.77	+	9.40	+	15.68
03 Wheat Products	0.1068	154.46	149.72	141.22	+	3.17	+	9.38
04 Besan	0.0728	132.42	126.75	122.81	+	4.47	+	7.83
05 Rice	1.5501	188.87	188.45	180.94	+	0.22	+	4.38
06 Bakery and Confectionary	0.3702	150.10	148.12	134.85	+	1.34	+	11.31
07 Nimco	0.0774	136.28	135.47	123.24	+	0.60	+	10.58
08 Meat	1.7146	178.86	175.79	151.62	+	1.75	+	17.97
09 Chicken	1.4641	166.21	112.34	111.28	+	47.95	+	49.36
10 Fish	0.2640	124.80	124.38	120.53	+	0.34	+	3.54
11 Milk fresh	10.3803	139.41	139.41	129.90	+	0.00	+	7.32
12 Milk products	0.9624	136.33	136.33	128.35	+	0.00	+	6.22
13 Milk powder	0.1062	131.13	130.24	124.94	+	0.68	+	4.95
14 Eggs	0.5665	192.00	171.70	144.90	+	11.82	+	32.51
15 Butter	0.3333	149.14	148.79	134.44	+	0.24	+	10.93
16 Mustard oil	0.0136	181.11	177.27	131.97	+	2.17	+	37.24
17 Cooking oil	0.6011	219.97	211.65	151.76	+	3.93	+	44.95
18 Vegetable ghee	2.3764	224.48	217.40	158.23	+	3.26	+	41.87
19 Dry fruits	0.2496	155.98	154.97	142.36	+	0.65	+	9.57
20 Fresh fruits	1.4505	118.06	119.57	103.84	-	1.26	+	13.69
21 Pulse Masoor	0.2076	132.43	111.80	109.11	+	18.45	+	21.37
22 Pulse Moong	0.2510	116.02	119.36	160.66	-	2.80	-	27.79
23 Pulse Mash	0.1465	106.74	105.21	103.63	+	1.45	+	3.00
24 Pulse Gram	0.2751	126.56	120.09	118.10	+	5.39	+	7.16
25 Gram Whole	0.1116	135.88	124.91	114.77	+	8.78	+	18.39
26 Beans	0.0896	173.05	173.23	167.28	-	0.10	+	3.45
27 Potatoes	0.7437	221.83	235.12	286.88	-	5.65	-	22.67
28 Onions	0.8965	139.53	99.98	105.44	+	39.56	+	32.33
29 Tomatoes	0.5069	144.72	158.27	173.44	-	8.56	-	16.56
30 Fresh Vegetables	2.0947	150.53	141.92	169.91	+	6.07	-	11.41
31 Sugar	2.0296	174.27	169.48	153.02	+	2.83	+	13.89
32 Gur	0.1522	158.80	154.87	149.80	+	2.54	+	6.01
33 Honey	0.0296	137.87	137.87	125.88	+	0.00	+	9.52
34 Sweetmeat	0.3967	142.59	141.66	131.54	+	0.66	+	8.40
35 Ice Cream	0.0568	142.84	142.84	132.99	+	0.00	+	7.41
36 Condiments and Spices	1.4919	171.66	175.33	196.03	-	2.09	-	12.43
37 Dessert Preparation	0.0133	132.71	132.10	122.45	+	0.46	+	8.38
38 Tea	1.2566	139.88	138.10	137.95	+	1.29	+	1.40
39 Beverages	0.5537	135.13	133.95	129.40	+	0.88	+	4.43
<b>Alcoholic Beverages, Tobacco</b>	<b>1.2786</b>	<b>136.16</b>	<b>135.37</b>	<b>134.39</b>	<b>+</b>	<b>0.58</b>	<b>+</b>	<b>1.32</b>
40 Cigarettes	1.2364	134.80	133.97	133.08	+	0.62	+	1.29
41 Pan Prepared	0.0422	176.12	176.12	172.73	+	0.00	+	1.96
<b>Clothing and footwear</b>	<b>9.4826</b>	<b>154.03</b>	<b>153.41</b>	<b>142.32</b>	<b>+</b>	<b>0.40</b>	<b>+</b>	<b>8.23</b>
42 Cotton Cloth	2.8381	170.16	169.22	157.33	+	0.56	+	8.15
43 Woolen Cloth	1.0959	145.91	144.22	131.18	+	1.17	+	11.23
44 Readymade Garments	1.1345	145.18	144.83	135.67	+	0.24	+	7.01
45 Woolen Readymade Garments	0.5401	143.31	143.31	130.27	+	0.00	+	10.01
46 Tailoring	1.2999	152.38	152.35	139.34	+	0.02	+	9.36
47 Hosiery	0.4322	187.35	186.00	165.78	+	0.73	+	13.01
48 Dopatta	0.2078	145.16	145.04	135.09	+	0.08	+	7.45
49 Cleaning and Laundering	0.0176	144.34	144.17	140.30	+	0.12	+	2.88
50 Footwear	1.9165	137.71	137.55	131.35	+	0.12	+	4.84
<b>Housing, water, Elec., Gas an</b>	<b>18.4853</b>	<b>143.90</b>	<b>141.47</b>	<b>128.93</b>	<b>+</b>	<b>1.72</b>	<b>+</b>	<b>11.61</b>
51 House Rent	8.6110	140.21	140.21	132.21	+	0.00	+	6.05
52 Construction Input Items	0.6306	136.86	135.85	123.13	+	0.74	+	11.15
53 Construction Wage Rates	0.2526	162.02	160.29	153.03	+	1.08	+	5.87
54 Water Supply	0.0645	218.49	218.49	213.67	+	0.00	+	2.26
55 Garbage Collection	0.0080	154.75	154.75	142.31	+	0.00	+	8.74
56 Electricity Charges	3.4431	146.62	131.62	119.83	+	11.40	+	22.36
57 Liquefied Hydrocarbons	0.9994	167.55	175.55	117.92	-	4.56	+	42.09
58 Solid Fuel	4.4761	142.50	142.47	130.29	+	0.02	+	9.37

**Annexure B:CPI (Rural) Index Numbers by Commodity Groups & Commodities (2015-16=100)**

Item and Specification	Weight	Index Numbers			% Change in Sep 2021 over	
		Sep 21	Aug 21	Sep 20	Aug 2021	Sep 2020
<b><i>Furnishing and household equi</i></b>	<b>4.1031</b>	<b>146.50</b>	<b>145.48</b>	<b>134.49</b>	<b>+ 0.70</b>	<b>+ 8.93</b>
59 Furniture and Furnishing	0.5786	149.06	148.65	138.86	+ 0.28	+ 7.35
60 Household Textiles	0.4382	134.08	134.08	129.68	+ 0.00	+ 3.39
61 Household Equipments	1.2774	154.80	153.35	141.38	+ 0.95	+ 9.49
62 Plastic Products	0.0776	160.75	160.52	149.48	+ 0.14	+ 7.54
63 Major Tools and Equipments	0.0324	131.12	131.12	120.40	+ 0.00	+ 8.90
64 Washing Soaps, Detergents and	1.6989	142.22	141.01	128.66	+ 0.86	+ 10.54
<b><i>Health</i></b>	<b>3.5141</b>	<b>155.10</b>	<b>154.46</b>	<b>144.60</b>	<b>+ 0.41</b>	<b>+ 7.26</b>
65 Drugs and Medicines	1.5792	155.55	155.32	144.83	+ 0.15	+ 7.40
66 Doctor Clinic Fee	0.5128	192.18	190.32	172.49	+ 0.98	+ 11.42
67 Dental Services	0.0181	132.61	132.61	126.65	+ 0.00	+ 4.71
68 Medical Tests	0.3967	155.15	155.15	147.06	+ 0.00	+ 5.50
69 Hospitals Services	1.0073	135.90	134.96	129.38	+ 0.70	+ 5.04
<b><i>Transport</i></b>	<b>5.5580</b>	<b>149.28</b>	<b>147.74</b>	<b>137.96</b>	<b>+ 1.04</b>	<b>+ 8.21</b>
70 Motor Vehicles	0.7305	136.32	136.23	129.19	+ 0.07	+ 5.52
71 Motor Vehicles Accessories	0.1572	147.03	145.10	137.63	+ 1.33	+ 6.83
72 Motor Fuels	2.4932	168.03	166.10	144.97	+ 1.16	+ 15.91
73 Mechanical Services	0.3645	156.82	156.82	153.45	+ 0.00	+ 2.20
74 Motor Vehicle Tax	0.0174	120.86	120.86	127.98	+ 0.00	- 5.56
75 Transport Services	1.7952	127.47	125.59	128.77	+ 1.50	- 1.01
<b><i>Communication</i></b>	<b>1.9940</b>	<b>105.80</b>	<b>105.80</b>	<b>104.84</b>	<b>+ 0.00</b>	<b>+ 0.92</b>
76 Postal Services	0.0070	149.43	149.43	149.43	+ 0.00	+ 0.00
77 Communication Apparatus	0.3362	121.44	121.44	119.69	+ 0.00	+ 1.46
78 Communication Services	1.6508	102.42	102.42	101.63	+ 0.00	+ 0.78
<b><i>Recreation and culture</i></b>	<b>1.3764</b>	<b>136.71</b>	<b>135.26</b>	<b>126.67</b>	<b>+ 1.07</b>	<b>+ 7.93</b>
79 Recreation and Culture	0.4763	139.50	136.61	130.22	+ 2.12	+ 7.13
80 Text Books	0.5047	124.59	123.53	114.88	+ 0.86	+ 8.45
81 Newspapers	0.0230	165.56	165.56	161.68	+ 0.00	+ 2.40
82 Stationery	0.3724	147.80	147.57	135.94	+ 0.16	+ 8.72
<b><i>Education</i></b>	<b>2.1342</b>	<b>139.52</b>	<b>139.52</b>	<b>134.08</b>	<b>+ 0.00</b>	<b>+ 4.06</b>
83 Education	2.1342	139.52	139.52	134.08	+ 0.00	+ 4.06
<b><i>Restaurants and hotels</i></b>	<b>6.1895</b>	<b>146.78</b>	<b>145.85</b>	<b>137.74</b>	<b>+ 0.64</b>	<b>+ 6.56</b>
84 Readymade Food	3.8001	159.17	157.66	145.44	+ 0.96	+ 9.44
85 Marriage Hall Charges	2.2525	128.62	128.62	126.93	+ 0.00	+ 1.33
86 Accommodation Services	0.1369	101.62	101.62	101.59	+ 0.00	+ 0.03
<b><i>Misc. goods and services</i></b>	<b>5.0174</b>	<b>157.69</b>	<b>155.71</b>	<b>148.03</b>	<b>+ 1.27</b>	<b>+ 6.53</b>
87 Personal Grooming Services	1.5363	163.04	162.67	148.89	+ 0.23	+ 9.50
88 Appliances/Articles/Products	2.2746	136.55	134.84	125.33	+ 1.27	+ 8.95
89 Personal Effects n.e.c.	1.2065	190.74	186.19	189.74	+ 2.44	+ 0.53



**Annexure C: Wholesale Price Indices by Major Groups & Commodities (2015-16=100)**

Item and Specification	Weight	Index Numbers			% Change in Sep 2021 over			
		Sep 21	Aug 21	Sep 20	Aug 2021	Sep 2020		
<b>General</b>	<b>100.0000</b>	<b>175.20</b>	<b>169.82</b>	<b>146.48</b>	<b>+</b>	<b>3.17</b>	<b>+</b>	<b>19.61</b>
<b>Agriculture Forestry &amp; Fisher</b>	<b>25.7674</b>	<b>174.92</b>	<b>172.52</b>	<b>146.54</b>	<b>+</b>	<b>1.39</b>	<b>+</b>	<b>19.37</b>
001 Wheat	0.6297	163.75	153.47	157.07	+	6.70	+	4.25
002 Maize	0.6764	160.40	161.64	136.08	-	0.77	+	17.87
003 Rice	2.4413	177.17	176.25	163.01	+	0.52	+	8.69
004 Sorghum / Jowar	0.0214	206.23	185.54	191.65	+	11.15	+	7.61
005 Millet / Bajra	0.0374	249.21	240.38	128.41	+	3.67	+	<u>94.07</u>
006 Vegetables	1.2441	185.93	188.86	235.49	-	1.55	-	21.05
007 Fresh Fruits	1.5144	139.09	145.70	127.50	-	4.54	+	9.09
008 Dry Fruits	0.2478	139.20	138.84	129.09	+	0.26	+	7.83
009 Cotton Seeds	1.1511	140.74	141.14	132.90	-	0.28	+	5.90
010 Other Oil Seeds	0.0722	214.86	211.46	141.18	+	1.61	+	<u>52.19</u>
011 Edible Roots / Potatoes	0.2540	242.87	238.18	358.64	+	1.97	-	32.28
012 Stimulant & Spice Crops	0.1634	301.64	294.59	408.29	+	2.39	-	26.12
013 Pulses	0.4901	134.32	128.05	119.94	+	4.90	+	11.99
014 Sugar Crops	1.0725	139.03	139.03	129.46	+	0.00	+	7.39
015 Fibre Crops	5.3169	255.83	256.92	145.46	-	0.42	+	<u>75.88</u>
016 Unmanufactured Tobacco	0.0742	243.60	239.24	212.75	+	1.82	+	14.50
017 Poultry	0.5633	152.18	103.23	104.51	+	47.42	+	45.61
018 Raw Milk from Bovine Animals	7.0279	143.28	139.65	131.55	+	2.60	+	8.92
019 Eggs	0.5034	204.87	176.35	150.85	+	16.17	+	35.81
020 Raw Animal Materials / Wool	0.0351	107.67	106.95	105.50	+	0.67	+	2.06
021 Hides, Skins & Fur Skins, Raw	0.4834	33.12	33.88	29.67	-	2.24	+	11.63
022 Fuel Wood in Logs	0.0179	127.84	127.84	119.09	+	0.00	+	7.35
023 Fish Live Fresh or Chilled	1.7295	158.04	158.03	157.77	+	0.01	+	0.17
<b>Ores/Minerals, Elec., Gas &amp; W</b>	<b>12.0069</b>	<b>174.24</b>	<b>169.35</b>	<b>165.18</b>	<b>+</b>	<b>2.89</b>	<b>+</b>	<b>5.48</b>
024 Coal not Agglomerated	0.7508	75.79	75.79	75.79	+	0.00	+	0.00
025 Natural Gas Liquefied	5.7065	206.11	207.37	195.57	-	0.61	+	5.39
026 Salt & Pure Sodium Chloride	0.0584	169.28	169.23	168.63	+	0.03	+	0.39
027 Electrical Energy	5.4912	154.63	142.64	145.80	+	8.41	+	6.06
<b>Food, Beverages, Tobacco, Textil</b>	<b>31.1122</b>	<b>169.86</b>	<b>163.47</b>	<b>141.57</b>	<b>+</b>	<b>3.91</b>	<b>+</b>	<b>19.98</b>
<b>Food Products, Beverages &amp;</b>	<b>20.0718</b>	<b>163.60</b>	<b>159.78</b>	<b>140.17</b>	<b>+</b>	<b>2.39</b>	<b>+</b>	<b>16.72</b>
028 Meat of Animals	3.4559	184.19	180.57	154.14	+	2.00	+	19.50
029 Vegetables & Fruit Juice	0.0058	124.92	123.20	113.10	+	1.40	+	10.45
030 Dried Fruits & Nuts	0.1733	177.07	177.03	160.39	+	0.02	+	10.40
031 Fruit Juices	0.3880	131.76	131.77	127.01	-	0.01	+	3.74
032 Vegetable Oils Refined	1.9242	175.49	170.89	125.92	+	2.69	+	39.37
033 Vegetable Ghee	1.5632	218.13	208.96	149.73	+	4.39	+	45.68
034 Oil Cakes	0.9611	161.26	159.32	145.33	+	1.22	+	10.96
035 Processed Liquid Milk	4.4437	143.51	143.51	135.42	+	0.00	+	5.97
036 Milk & Cream in Solid Form	0.0316	136.00	135.88	130.15	+	0.09	+	4.49
037 Ice Cream	0.0047	148.14	147.94	137.64	+	0.14	+	7.63
038 Dairy Products N.E.C	0.0117	139.41	139.38	135.29	+	0.02	+	3.05
039 Wheat Flour	2.3034	164.23	152.32	144.96	+	7.82	+	13.29
040 Other Cereal Flour	0.0604	130.80	124.24	120.07	+	5.28	+	8.94
041 Sugar Refined	1.7975	175.16	169.42	150.22	+	3.39	+	16.60
042 Chocolate	0.0139	89.03	89.03	81.72	+	0.00	+	8.95
043 Sugar Confectionary	0.0738	187.66	187.66	171.75	+	0.00	+	9.26
044 Coffee & Tea	0.7303	131.07	130.00	129.75	+	0.82	+	1.02
045 Spices	0.1449	342.34	342.23	250.14	+	0.03	+	36.86
046 Other Food Products	0.0336	119.35	119.35	117.51	+	0.00	+	1.57
047 Mineral Water	0.0207	125.24	125.24	125.24	+	0.00	+	0.00
048 Beverages	0.6303	131.96	131.61	128.26	+	0.27	+	2.88
049 Tobacco Products	1.2998	104.23	104.23	104.23	+	0.00	+	0.00
<b>Textiles &amp; Apparels</b>	<b>10.3289</b>	<b>185.33</b>	<b>173.51</b>	<b>145.84</b>	<b>+</b>	<b>6.81</b>	<b>+</b>	<b>27.08</b>
050 Cotton Yarn	5.2491	226.30	203.51	164.84	+	11.20	+	37.28
051 Nylon Yarn	0.1719	95.24	95.24	95.24	+	0.00	+	0.00
052 Blended Yarn	0.1689	141.31	129.30	120.22	+	9.29	+	17.54
053 Woven Fabrics	0.0128	161.21	161.21	137.73	+	0.00	+	17.05
054 Cotton Fabrics	0.6343	170.31	170.13	150.25	+	0.11	+	13.35
055 Other Fabrics	1.1016	126.38	126.38	113.59	+	0.00	+	11.26
056 Silk & Reyon Fabrics	0.7350	168.50	168.50	129.92	+	0.00	+	29.70
057 Towels	0.1235	141.44	141.44	125.47	+	0.00	+	12.73
058 Blankets	0.0029	104.95	104.95	104.49	+	0.00	+	0.44
059 Bed Sheets	0.0913	127.88	127.88	119.63	+	0.00	+	6.90

## Annexure C: Wholesale Price Indices by Major Groups &amp; Commodities

(2015-16=100)

Item and Specification	Weight	Index Numbers			% Change in Sep 2021 over	
		Sep 21	Aug 21	Sep 20	Aug 2021	Sep 2020
060 Quilts	0.0019	121.31	121.31	109.35	+ 0.00	+ 10.94
061 Woolen Carpets	0.0383	137.01	137.01	137.01	+ 0.00	+ 0.00
062 Synthetic Carpets	0.0566	117.09	117.09	115.72	+ 0.00	+ 1.18
063 Hosiery Products	0.8832	139.20	139.18	123.09	+ 0.01	+ 13.09
064 Readymade Garments	1.0576	140.39	140.16	131.75	+ 0.16	+ 6.56
<b>Leather Products</b>	<b>0.7115</b>	<b>122.09</b>	<b>122.09</b>	<b>118.88</b>	<b>+ 0.00</b>	<b>+ 2.70</b>
065 Leather Without Hair	0.2973	112.56	112.56	108.00	+ 0.00	+ 4.22
066 Other Leather N.E.C	0.2567	114.96	114.96	111.77	+ 0.00	+ 2.85
067 Footwears	0.1575	151.69	151.69	151.00	+ 0.00	+ 0.46
<b>Other Transportable Goods</b>	<b>22.3979</b>	<b>185.27</b>	<b>176.15</b>	<b>143.73</b>	<b>+ 5.18</b>	<b>+ 28.90</b>
068 Timber	0.0165	157.07	157.07	152.83	+ 0.00	+ 2.77
069 Printing Paper	0.4279	130.70	130.70	130.70	+ 0.00	+ 0.00
070 Hard Board	0.1579	146.50	146.50	146.50	+ 0.00	+ 0.00
071 Motor Spirit	1.6268	170.87	168.95	146.32	+ 1.14	+ 16.78
072 Diesel Oil	5.4849	168.97	165.52	134.12	+ 2.08	+ 25.98
073 Kerosene Oil	0.2151	175.58	172.39	128.04	+ 1.85	+ 37.13
074 Furnace Oil	3.2664	383.46	338.70	227.82	+ 13.22	+ <u>68.32</u>
075 Mobil Oil	0.7114	135.48	131.01	122.33	+ 3.41	+ 10.75
076 Chemicals	1.7720	155.24	150.36	132.84	+ 3.25	+ 16.86
077 Dyeing Material	0.1539	146.16	146.16	146.16	+ 0.00	+ 0.00
078 Fertilizers	2.8657	122.94	115.96	95.67	+ 6.02	+ 28.50
079 Pesticides	0.2763	146.51	146.51	141.59	+ 0.00	+ 3.47
080 Insecticides	0.1276	111.49	111.49	111.49	+ 0.00	+ 0.00
081 Paints & Varnishes	0.1916	141.16	141.16	135.82	+ 0.00	+ 3.93
082 Medicines	1.1428	152.03	151.97	145.01	+ 0.04	+ 4.84
083 Soaps & Detergents	0.8168	120.02	117.70	110.00	+ 1.97	+ 9.11
084 Auto Tyres	0.2703	127.22	127.04	124.76	+ 0.14	+ 1.97
085 Plastic Products	0.4550	119.91	119.91	117.75	+ 0.00	+ 1.83
086 Glass sheets	0.2089	148.44	148.06	138.76	+ 0.26	+ 6.98
087 Other Glass Articles	0.1635	151.04	150.08	149.95	+ 0.64	+ 0.73
088 Ceramics & Sanitary Fixture	0.0244	128.29	127.62	124.15	+ 0.52	+ 3.33
089 Bricks, Blocks & Tiles	0.1566	136.54	136.28	129.55	+ 0.19	+ 5.40
090 Cement	1.8145	134.17	134.16	118.45	+ 0.01	+ 13.27
091 Bed Foam	0.0006	158.20	158.20	147.59	+ 0.00	+ 7.19
092 Matches	0.0505	1195.3	1173.3	1171.7	+ 1.88	+ 2.02
<b>Metal Product, Machinery &amp; Eq</b>	<b>8.7156</b>	<b>170.50</b>	<b>168.82</b>	<b>145.10</b>	<b>+ 1.00</b>	<b>+ 17.51</b>
093 Steel Bar & Sheets	1.4615	239.41	230.68	160.01	+ 3.78	+ 49.62
094 Pipe Fittings	0.0780	176.06	176.06	144.78	+ 0.00	+ 21.61
095 Steel Products	0.3879	134.30	134.30	134.16	+ 0.00	+ 0.10
096 Engines & Motors	0.0046	107.29	107.29	107.29	+ 0.00	+ 0.00
097 Vacuum Pumps	0.0155	107.56	107.56	107.56	+ 0.00	+ 0.00
098 Air Conditioners	0.0049	129.14	128.74	115.95	+ 0.31	+ 11.38
099 Cultivators	0.0551	103.75	103.75	103.75	+ 0.00	+ 0.00
100 Chuff Cutter	0.1293	128.57	121.43	110.00	+ 5.88	+ 16.88
101 Tractors	0.0028	135.63	135.63	129.36	+ 0.00	+ 4.85
102 Lathe Machines	0.0525	242.71	232.65	210.12	+ 4.32	+ 15.51
103 Concrete Mixture	0.0107	100.00	100.00	100.00	+ 0.00	+ 0.00
104 Fridge, WashM, SewM, Fans, Iron	1.1645	163.04	163.03	154.41	+ 0.01	+ 5.59
105 Electric Wires	0.0912	148.23	148.23	137.76	+ 0.00	+ 7.60
106 Lighting Equipments	1.4431	131.75	131.51	119.49	+ 0.18	+ 10.26
107 Radio & Television	0.1843	108.07	108.07	104.52	+ 0.00	+ 3.40
108 Motor Vehicles	0.0244	156.48	156.48	156.45	+ 0.00	+ 0.02
109 Motorcycles	0.2570	140.01	139.78	124.50	+ 0.16	+ 12.46
110 Bicycles	3.3483	172.55	172.55	153.05	+ 0.00	+ 12.74