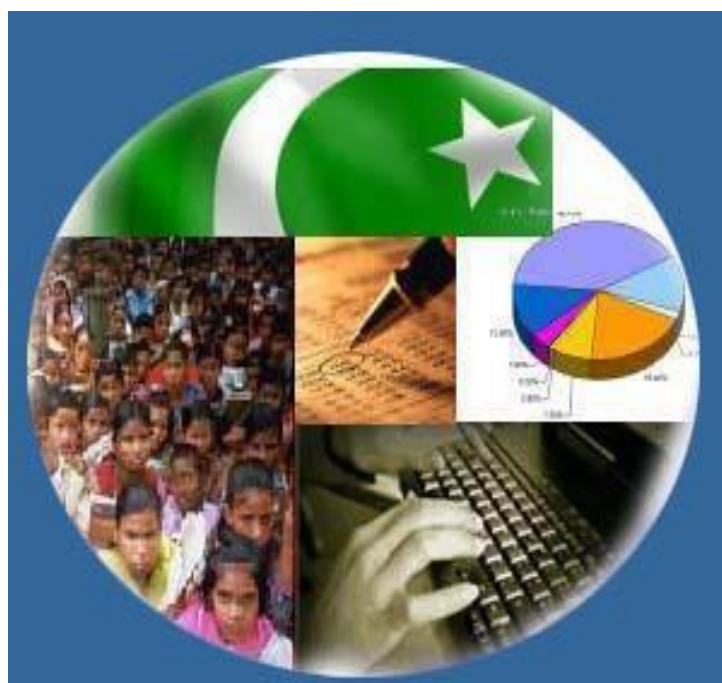




Monthly Review on Price Indices



September, 2020
(Base Year 2015-16)

Government of Pakistan
Ministry of Planning, Development & Special Initiatives
Pakistan Bureau of Statistics
Islamabad

Inflation in Brief

- CPI inflation General**, increased by 9.0% on year-on-year basis in September 2020 as compared to an increase of 8.2% in the previous month and 11.4% in September 2019. On month-on-month basis, it increased by 1.5% in September 2020 as compared to an increase of 0.6% in the previous month and an increase of 0.8% in September 2019.
- CPI inflation Urban**, increased by 7.7% on year-on-year basis in September 2020 as compared to an increase of 7.1% in the previous month and 11.6% in September 2019. On month-on-month basis, it increased by 1.3% in September 2020 as compared to an increase of 0.8% in the previous month and an increase of 0.7% in September 2019.
- CPI inflation Rural**, increased by 11.1 % on year-on-year basis in September 2020 as compared to an increase of 9.9% in the previous month and 11.1% in September 2019. On month-on-month basis, it increased by 2.0 % in September 2020 as compared to an increase of 0.4% in the previous month and an increase of 0.8% in September 2019.
- SPI inflation** on YoY increased by 12.0% in September 2020 as compared to an increase of 11.7% a month earlier and an increase of 14.7% in September 2019. On MoM basis, it increased by 2.1% in September 2020 as compared to an increase of 0.9% a month earlier and an increase of 1.9% in September 2019.
- WPI inflation** on YoY basis increased by 4.3% in September 2020 as compared to an increase of 3.3% a month earlier and an increase of 15.9% in September 2019. WPI inflation on MoM basis increased by 1.0% in September 2020 as compared to a decrease of 1.3% a month earlier and an increase of 0.1% in corresponding month of last year i.e. September 2019.
- Figures 1 and 2 show graphically the yearly data of Table 1.a for Urban and Rural CPI while Table 1.1 shows "Period Average" and "YoY" percent changes in indices of three years.

Table 1.a General Inflation (%) (Base 2015-16)																		
PERIOD	CPI														SPI**		WPI	
	General						Food				Non-Food							
	National		Urban		Rural		Urban		Rural		Urban		Rural		YoY	MoM	YoY	MoM
	YoY	MoM	YoY	MoM	YoY	MoM	YoY	MoM	YoY	MoM	YoY	MoM	YoY	MoM	YoY	MoM	YoY	MoM
Mar-19	8.6	2.0	8.9	1.9	8.2	2.2	8.8	2.5	9.3	3.3	9.0	1.5	7.3	1.3	10.5	2.1	16.6	2.2
Apr-19	8.3	0.7	8.4	0.8	8.1	0.6	8.3	1.3	9.3	0.6	8.4	0.6	7.2	0.6	10.0	0.5	17.2	2.0
June-19	8.4	0.6	8.5	0.7	8.3	0.5	9.0	1.3	9.7	0.6	8.3	0.3	7.1	0.4	9.9	0.6	16.5	1.2
Jun-19	8.0	0.5	8.1	0.3	7.9	0.7	7.5	-0.3	9.1	0.7	8.4	0.7	7.0	0.7	9.3	0.9	14.0	0.2
Jul-19	8.4	1.8	8.7	2.0	7.9	1.6	7.9	1.0	9.3	1.7	9.2	2.5	6.8	1.5	8.9	1.0	13.3	3.1
Aug-19	10.5	1.6	10.6	1.5	10.3	1.9	11.9	3.1	12.6	2.9	9.9	0.5	8.4	1.1	12.1	2.7	14.1	1.2
Sep-19	11.4	0.8	11.6	0.7	11.1	0.8	15.0	2.0	15.0	1.8	9.7	0.0	8.0	0.0	14.7	1.9	15.9	0.1
Oct-19	11.0	1.8	10.9	1.6	11.3	2.2	13.7	1.4	14.6	2.6	9.3	1.7	8.7	1.8	15.1	2.7	13.3	2.0
Nov-19	12.7	1.3	12.1	1.0	13.6	1.9	16.6	2.4	19.3	3.4	9.6	0.2	9.0	0.6	20.2	3.7	11.2	-0.8
Dec-19	12.6	-0.3	12.0	-0.4	13.6	-0.3	16.7	-1.7	19.7	-1.1	9.5	0.4	8.8	0.4	18.1	-2.0	12.4	-0.3
Jan-20	14.6	2.0	13.4	1.7	16.3	2.4	19.5	2.7	23.8	3.4	10.2	1.1	10.5	1.5	18.3	0.5	15.4	1.8
Feb-20	12.4	-1.0	11.2	-1.1	14.2	-1.0	15.2	-1.4	19.7	-1.6	9.1	-0.9	9.8	-0.4	14.5	-0.8	12.7	-0.7
Mar-20	10.2	0.0	9.3	0.1	11.7	-0.1	13.0	0.6	15.5	-0.3	7.3	-0.1	8.5	0.1	11.8	-0.3	9.3	-0.9
Apr-20	8.5	-0.8	7.7	-0.7	9.8	-1.1	10.4	-1.0	12.9	-1.7	6.2	-0.5	7.4	-0.5	9.3	-1.8	4.9	-2.0
May-20	8.2	0.3	7.3	0.3	9.7	0.3	10.6	1.5	13.7	1.4	5.4	-0.4	6.4	-0.5	11.0	2.2	1.5	-2.1
Jun-20	8.6	0.8	7.6	0.7	10.0	1.0	12.9	1.8	15.2	2.0	4.7	0.0	5.8	0.1	11.5	1.4	0.9	-0.3
July-20	9.3	2.5	7.8	2.2	11.6	3.0	15.1	3.0	17.8	4.0	3.9	1.7	6.5	2.2	13.7	3.0	3.2	5.4
Aug-20	8.2	0.6	7.1	0.8	9.9	0.4	11.3	-0.3	13.5	-0.9	4.8	1.5	6.8	1.5	11.7	0.9	3.3	1.3
Sep-20	9.0	1.5	7.7	1.3	11.1	2.0	12.4	3.0	15.8	3.8	5.0	0.2	7.2	0.3	12.0	2.1	4.3	1.0

** SPI for quintile 1. Digits 0.0* are due to rounding off.

Core inflation (NFNE)

7. Measured by **non-food non-energy Urban CPI** increased by 5.5% on (YoY) basis in September 2020 as compared to an increase of 5.6% in the previous month and 8.4% in September 2019. On (MoM) basis, it increased by 0.3% in September 2020 as compared to increase of 0.7% in previous month, and an increase of 0.4% in corresponding month of last year i.e. September 2019.
8. Measured by **non-food non-energy Rural CPI** increased by 7.8% on (YoY) basis in September 2020 as compared to an increase of 7.6% in the previous month and 8.8% in September 2019. On (MoM) basis, it increased by 0.4% in September 2020 as compared to an increase of 0.8% in previous month, and an increase of 0.3% in corresponding month of last year i.e. September 2019.

Core inflation (Trimmed)

9. Measured by 20% **weighted trimmed mean Urban CPI** increased by 7.1% on (YoY) basis in September 2020 as compared to 7.0% in the previous month and by 9.3% in September 2019. On (MoM) basis, it increased by 0.4% in September 2020 as compared to an increase of 1.3% in the previous month and an increase of 0.6% in corresponding month of last year i.e. September 2019.
10. Measured by 20% **weighted trimmed mean Rural CPI** increased by 10.0% on (YoY) basis in September 2020 as compared to 9.3% in the previous month and by 9.6% in September 2019. On (MoM) basis, it increased by 0.9% in September 2020 as compared to an increase of 1.0% in the previous month and an increase of 0.6% in corresponding month of last year i.e. September 2019.

Table 1.b Core Inflation (%) (Base 2015-16)

Period	NFNE				Trimmed			
	Urban		Rural		Urban		Rural	
	YoY	MoM	YoY	MoM	YoY	MoM	YoY	MoM
Sep-19	8.4	0.4	8.8	0.3	9.3	0.6	9.6	0.6
Oct-19	7.7	0.5	8.6	0.7	8.9	0.5	9.4	0.7
Nov-19	7.5	0.3	8.4	0.5	9.5	0.4	10.7	0.7
Dec-19	7.5	0.4	8.1	0.3	9.6	0.2	10.8	0.3
Jan-20	7.9	1.1	9.0	1.0	10.3	1.2	12.7	1.9
Feb-20	8.0	0.2	9.4	0.5	9.7	0.1	12.8	0.6
Mar-20	7.4	0.3	9.4	0.6	8.7	0.3	11.4	0.1
Apr-20	6.4	0.2	8.5	0.3	6.7	-0.2	9.3	-0.6
May-20	6.3	0.4	8.4	0.4	6.7	0.4	8.9	0.5
Jun-20	6.5	0.4	8.8	0.7	7.4	0.4	9.9	0.9
Jul-20	5.3	0.6	7.8	1.1	6.7	0.9	9.8	1.5
Aug-20	5.6	0.7	7.6	0.8	7.0	1.3	9.3	1.0
Sep-20	5.5	0.3	7.8	0.4	7.1	0.4	10.0	0.9

Table 1.1 Period Average and YoY % Change

INDEX	Average July- September % changes			September over September % changes		
	2020-2021	2019-2020	2018-2019	2020	2019	2018
CPI (National)	8.84	10.08	6.08	9.04	11.37	5.42
CPI(Urban)	7.55	10.30	6.17	7.68	11.56	5.64
CPI(Rural)	10.85	9.74	5.95	11.12	11.10	5.09
SPI	12.46	11.88	2.49	11.98	14.67	0.41
WPI	3.58	14.41	15.89	4.26	15.90	14.64

Figure 1: UCPI Inflation YoY, Special Indices

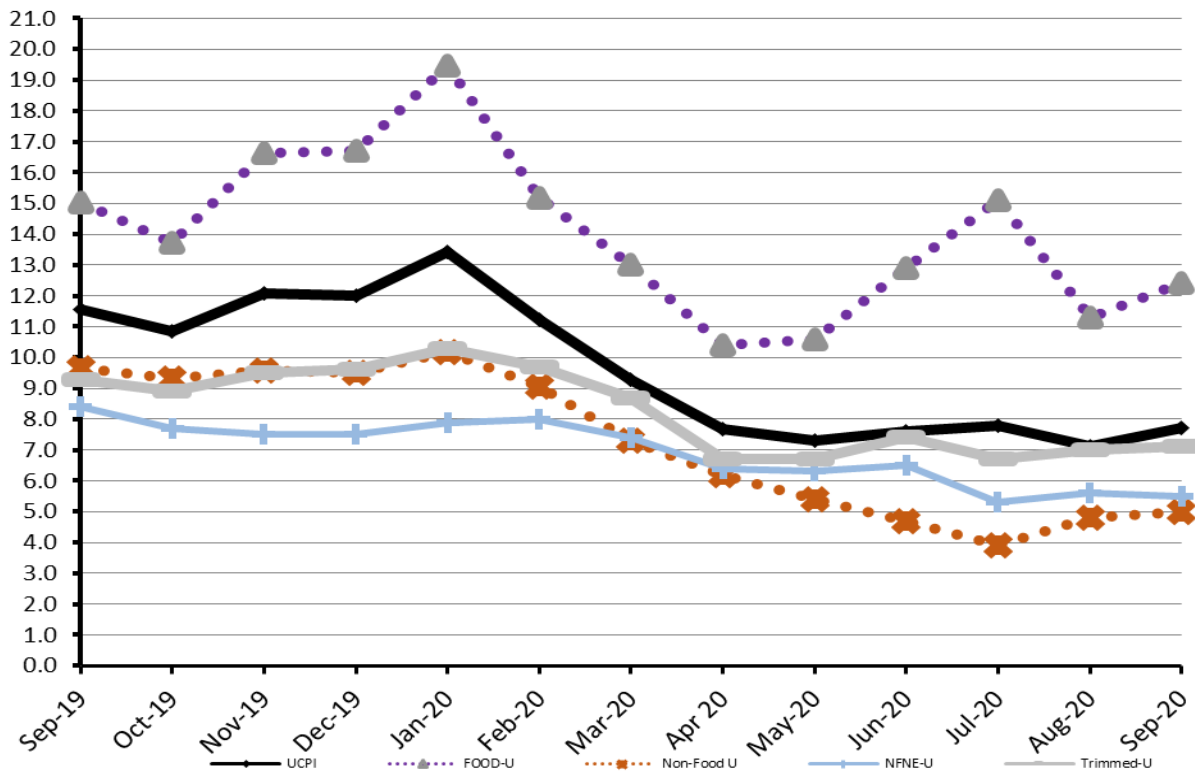


Figure 2: RCPI Inflation YoY, Special Indices

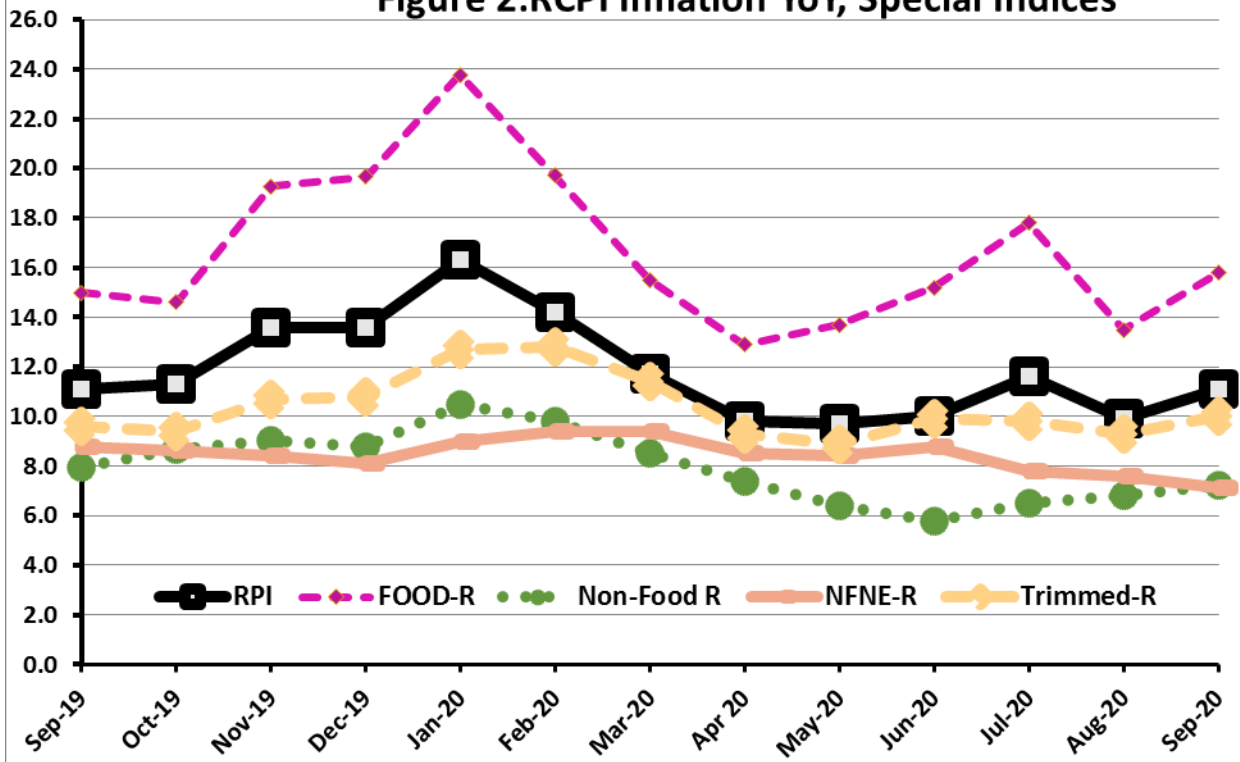


Figure 3: UCPI Inflation MoM, Special Indices

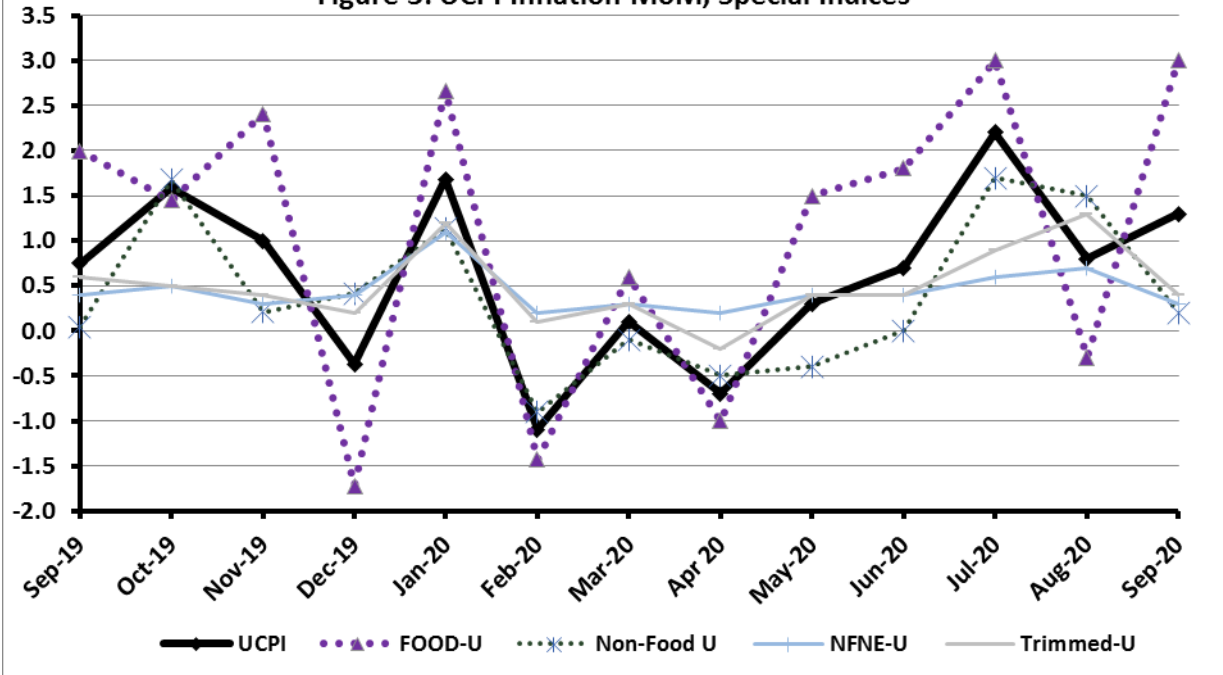


Figure 4: RPI Inflation MoM, Special Indices

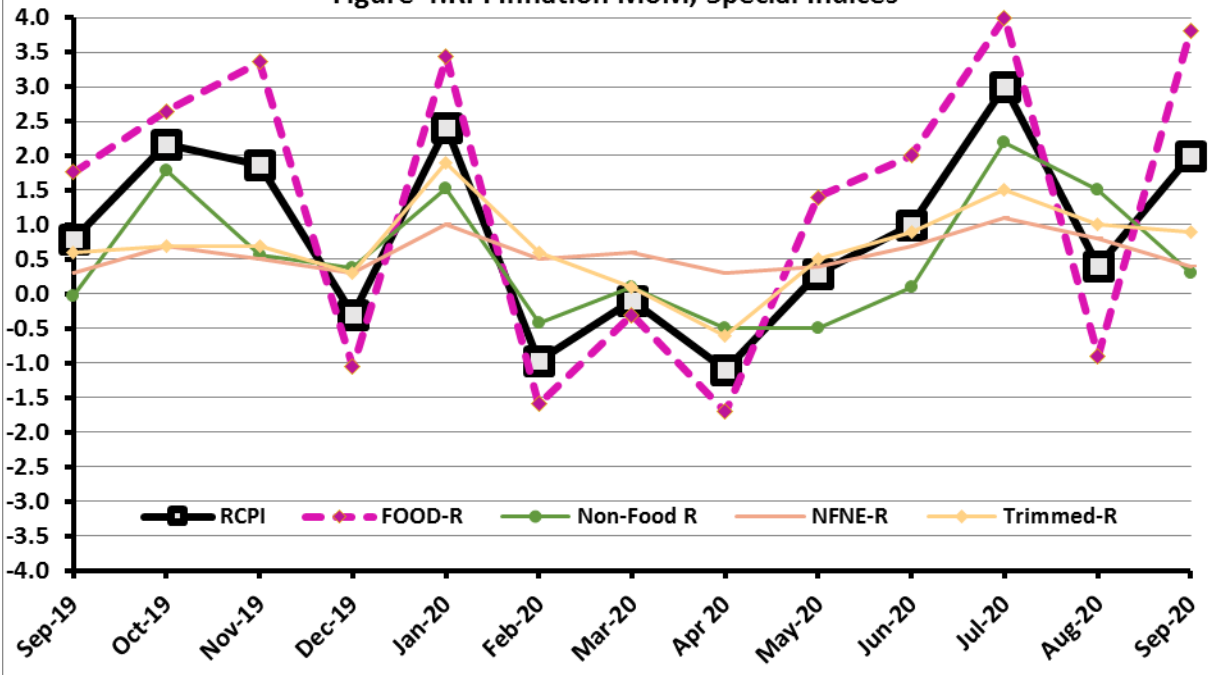


Figure 5: CPI Y.o.Y (National, Urban, Rural)

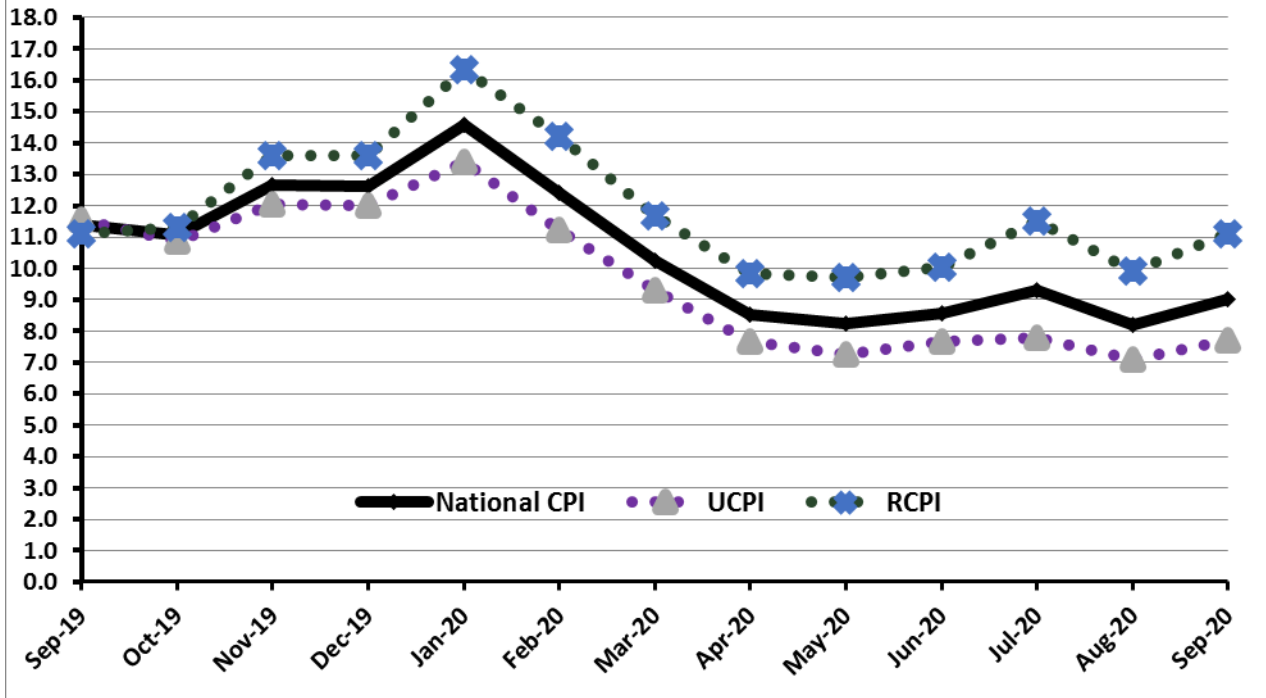
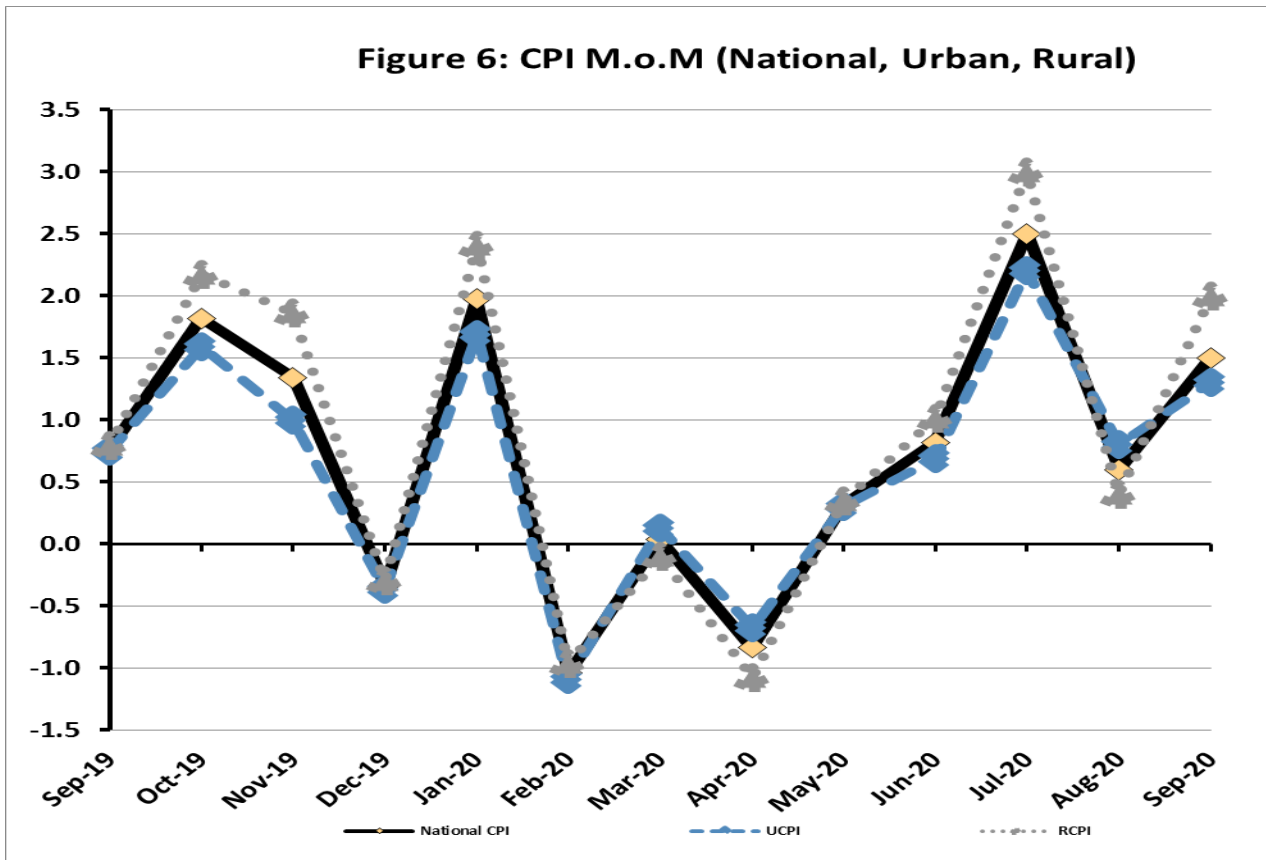


Figure 6: CPI M.o.M (National, Urban, Rural)



I. National Consumer Price Index (N-CPI)

The **National Consumer Price Index** of September 2020 is increased by **1.54%** over August 2020 and increased by **9.04%** over corresponding month of the last year i.e. September 2019.

Table 1 : Consumer Price Index (National) by Group of Commodities and Services (Base 2015-16)

No	Group	Group Weight (%)	Indices			% Change Sep 2020 Over		Impact (In % points) Sep 2020 Over	
			Sep 2020	Aug 2020	Sep 2019	Aug 2020	Sep 2019	Aug 2020	Sep 2019
	General	100.00	138.32	136.23	126.86	1.54	9.04	1.54	9.04
1.	Food & Non-alcoholic Bev.	34.58	144.14	138.87	125.63	3.79	14.74	1.34	5.05
	<i>Non-perishable Food Items</i>	29.60	140.76	138.53	122.76	1.61	14.67	0.49	4.20
	<i>Perishable Food Items</i>	4.99	164.19	140.92	142.62	16.51	15.13	0.85	0.85
2.	Alcoholic Bev. & Tobacco	1.02	142.40	141.69	134.51	0.50	5.86	0.01	0.06
3.	Clothing & Footwear	8.60	137.52	137.01	126.01	0.37	9.13	0.03	0.78
4.	Housing, Water, Electricity, Gas & Fuels	23.63	132.43	132.48	124.82	-0.03	6.10	-0.01	1.42
5.	Furnishing & Household Equipment Maintenance	4.10	132.74	131.28	123.03	1.11	7.89	0.04	0.31
6.	Health	2.79	144.46	143.07	133.45	0.97	8.25	0.03	0.24
7.	Transport	5.91	139.27	138.74	141.44	0.38	-1.53	0.02	-0.10
8.	Communication	2.21	107.01	106.98	106.70	0.03	0.29	0.00	0.01
9.	Recreation & Culture	1.59	122.32	121.40	117.69	0.76	3.93	0.01	0.06
10.	Education	3.79	142.93	142.47	141.54	0.32	0.98	0.01	0.04
11.	Restaurants & Hotels	6.92	135.42	134.45	125.10	0.72	8.25	0.05	0.56
12.	Miscellaneous	4.87	146.06	146.11	130.22	-0.04	12.16	0.00	0.61

II. Urban Consumer Price Index (UCPI)

The **Urban Consumer Price Index** of Sep 2020 is increased by **1.26%** over Aug 2020 and increased by **7.68%** over corresponding month of the last year i.e. Sep 2019.

Table 2: Consumer Price Index (Urban) by Group of Commodities and Services (Base 2015-16)

No	Group	Group Weight (%)	Indices			% Change Sep 2020 Over		Impact (In % points) Sep 2020 Over	
			Sep 2020	Aug 2020	Sep 2019	Aug 2020	Sep 2019	Aug 2020	Sep 2019
	General	100.00	137.53	135.82	127.72	1.26	7.68	1.26	7.68
1.	Food & Non-alcoholic Bev.	30.42	142.73	137.90	125.97	3.50	13.30	1.08	3.99
	Non-perishable Food Items	25.97	138.80	136.93	122.58	1.37	13.23	0.36	3.30
	Perishable Food Items	4.46	165.67	143.57	145.72	15.39	13.69	0.73	0.70
2.	Alcoholic Bev.& Tobacco	0.85	150.34	149.80	142.24	0.36	5.69	0.00	0.05
3.	Clothing & Footwear	8.01	133.75	133.20	123.86	0.41	7.98	0.03	0.62
4.	Housing, Water, Electricity, Gas & Fuels	27.03	134.02	134.06	126.98	-0.03	5.54	-0.01	1.49
5.	Furnishing & Household Equipment Maintenance	4.09	131.57	130.64	123.78	0.71	6.29	0.03	0.25
6.	Health	2.31	144.31	142.89	134.58	0.99	7.23	0.02	0.18
7.	Transport	6.14	140.06	139.08	142.32	0.70	-1.59	0.04	-0.11
8.	Communication	2.35	108.23	108.22	107.88	0.01	0.32	0.00	0.01
9.	Recreation & Culture	1.73	120.03	119.36	116.63	0.56	2.92	0.01	0.05
10.	Education	4.88	145.49	145.07	144.16	0.29	0.92	0.02	0.05
11.	Restaurants & Hotels	7.41	134.14	133.37	124.01	0.58	8.17	0.04	0.59
12.	Miscellaneous	4.77	144.68	145.22	130.90	-0.37	10.53	-0.02	0.51

Main contributors to month-on-month and year-on-year percentage changes are given below and detail is given in Annexure A.

1. MONTH-ON-MONTH Top few commodities which varied from previous month are given below: -

Food Items

Increased: Tomatoes (44.07%), Vegetables (30.33%), Chicken (18.31%), Onions (14.51%), Potatoes (6.18%), Eggs (5.2%), Pulse Gram (4.51%), Pulse Moong (3.46%), Spices (3%), Pulse Mash (2.76%), Pulse Masoor (1.59%) and Milk Fresh (1.16%).

Decreased: Fresh fruits (6.19%), Sugar (1.82%) and Gram Whole (0.48%).

Non-food Items

Increased: Construction input items (2.36%), Transport services (1.87%), Medical tests (1.55%) and Plastic products (0.78%).

Decreased: Liquefied Hydrocarbons (1.51%) and Electricity charges (0.62%).

2. YEAR-ON-YEAR: Top few commodities which varied from previous year i.e. September 2019 are given below:-

Food Items

Increased: Potatoes (67.2%), Tomatoes (51.86%), Wheat (42.13%), Spices (40.91%), Beans (40.27%), Pulse moong (39.31%), Eggs (38.61%), Pulse mash (34.55%), Sugar (25.4%), Butter (23.43%), Wheat flour (20.18%), Pulse masoor (20.11%), Vegetable ghee (15.82%), Gur (15.22) Bakery and confectionary (15.21%), vegetables (14.14%), Milk fresh (13%), Meat (11.97%), Cooking oil (11.14%), Dry Fruits (10.99%) and Pulse Gram (10.16%).

Decreased: Onions (30.82%), Chicken (23.6%), Fish (7.55%) and Fresh fruits (1.94%).

Non-food Items

Increased: Woollen cloth (13.96%), Electricity charges (11.8%), Furniture and furnishing (9.43%), Tailoring (9%), Cotton cloth (8.92%), Motor vehicle accessories (8.1%), Drugs and medicines (8.06%), Medical tests (7.45%), Construction wage rates (6.86%), Construction input items(6.53%), Footwear (6.32%), Hosiery (5.41%), stationery (4.64%), Transport services (5.09%) and House rent(4.29%).

Decreased: Motor fuel (7.1%).

III. Rural Consumer Price Index (RCPI)

The Rural Consumer Price Index of September 2020 is increased by **1.95%** over August 2020 and increased by **11.12%** over corresponding month of the last year i.e. September 2019.

Table 3: Consumer Price Index (Rural) by Group of Commodities and Services (Base 2015-16)

No	Group	Group Weight (%)	Indices			% Change Sep 2020 Over		Impact (In % points) Sep 2020 Over	
			Sep 2020	Aug 2020	Sep 2019	Aug 2020	Sep 2019	Aug 2020	Sep 2019
	General	100.00	139.51	136.84	125.55	1.95	11.12	1.95	11.12
1.	Food & Non-alcoholic Bev.	40.87	145.72	139.97	125.24	4.11	16.35	1.72	6.67
	Non-perishable Food Items	35.08	142.96	140.32	122.96	1.88	16.27	0.68	5.59
	Perishable Food Items	5.79	162.48	137.85	139.01	17.87	16.88	1.04	1.08
2.	Alcoholic Bev. & Tobacco	1.28	134.39	133.51	126.72	0.66	6.05	0.01	0.08
3.	Clothing & Footwear	9.48	142.32	141.86	128.76	0.32	10.53	0.03	1.02
4.	Housing, Water, Electricity, Gas & Fuels	18.49	128.93	128.98	120.06	-0.04	7.39	-0.01	1.31
5.	Furnishing & Household Equipment Maintenance	4.10	134.49	132.25	121.91	1.69	10.32	0.07	0.41
6.	Health	3.51	144.60	143.24	132.33	0.95	9.27	0.03	0.34
7.	Transport	5.56	137.96	138.18	139.97	-0.16	-1.44	-0.01	-0.09
8.	Communication	1.99	104.84	104.76	104.60	0.08	0.23	0.00	0.00
9.	Recreation & Culture	1.38	126.67	125.26	119.71	1.13	5.81	0.01	0.08
10.	Education	2.13	134.08	133.48	132.50	0.45	1.19	0.01	0.03
11.	Restaurants & Hotels	6.19	137.74	136.41	127.06	0.98	8.41	0.06	0.53
12.	Miscellaneous	5.02	148.03	147.38	129.24	0.44	14.54	0.02	0.75

Main contributors to month-on-month and year-on-year percentage changes are given below and detail is given in Annexure A.

1. **MONTH-ON-MONTH** Top few commodities which varied from previous month are given below: -

Food Items

Increased: Vegetables (45.18%), Tomatoes (30.33%), Onions (15.17%), Chicken (9.47%), Pulse Moong (7.79%), Spices (5.63%), Wheat (5.03%), Pulse Gram (4.64%), Gur (4.57%), Pulse Mash (3.96%), Potatoes (3.36%), Wheat Flour (3.14%), Eggs (5.2%), Rice (2.2%) and Milk fresh (1.16%).

Decreased: Fruits (10.44%), Sugar (0.63%), Vegetable ghee (0.35%) and Pulse Masoor (0.22%).

Non-food Items

Increased: Plastic Products (2.43%), Stationery (2%), Hosiery (1.95%), Furniture and Furnishing (1.5%), Motor Vehicles Accessories (1.14%), Hospitals Services (1.09%), Medical Tests (1.07%) and Construction Input Items (1.03%).

Decreased: Transport Services (0.72%), Electricity Charges (0.62%) and Liquefied Hydrocarbons (0.35%).

YEAR-ON-YEAR: Top few commodities which varied from previous year i.e. September 2019 are given below:-

Food Items

Increased: Potatoes (71.28%), Spices (57.81%), Tomatoes (57.12%), Wheat (45.12%), Pulse Moong (44.4%), Beans (36.02%), Pulse Mash (35.89%), Eggs (33.22%), Pulse Masoor (27.26%), Wheat Flour (26.74%), Sugar (25.28%), Vegetables (18.87%), Rice (17.51%), Vegetable ghee (17.37%), Bakery and Confectionary (15.08%), Cooking oil (13.54%), Readymade Food (13.05%), Gur (12.9%), Dry fruits (12.83%), Besan (9.43%), Meat (9.4%), Pulse Gram (9.27%), Milk fresh (7.39%), Beverages (6.3%) and Cigarettes (5.6%).

Decreased: Onions (36.25%), Chicken (19.37%), Fresh fruits (3.85%), Gram Whole (1.26%) and Fish (1.78%).

Non-food Items

Increased: Water Supply (38.75%), Hosiery (17.34%), Cotton Cloth (14.82%), Furniture and Furnishing (13.17%), Plastic Products (12.93%), Electricity Charges (11.8%), Medical Tests (9.81%), Household Equipment (9.4%), Construction Wage Rates (8.93%), Woolen Readymade Garments (8.84%), Drugs and Medicines (8.83%), Footwear (8.81%), Construction Input Items (7.73%), Stationery (7.08%), Readymade Garments (7%), Motor Vehicles Accessories (6.88%), Tailoring (6.06%), Hospitals Services (5.23%), Transport Services (4.98%), House Rent (4.94%) and Motor Vehicles (2.26%).

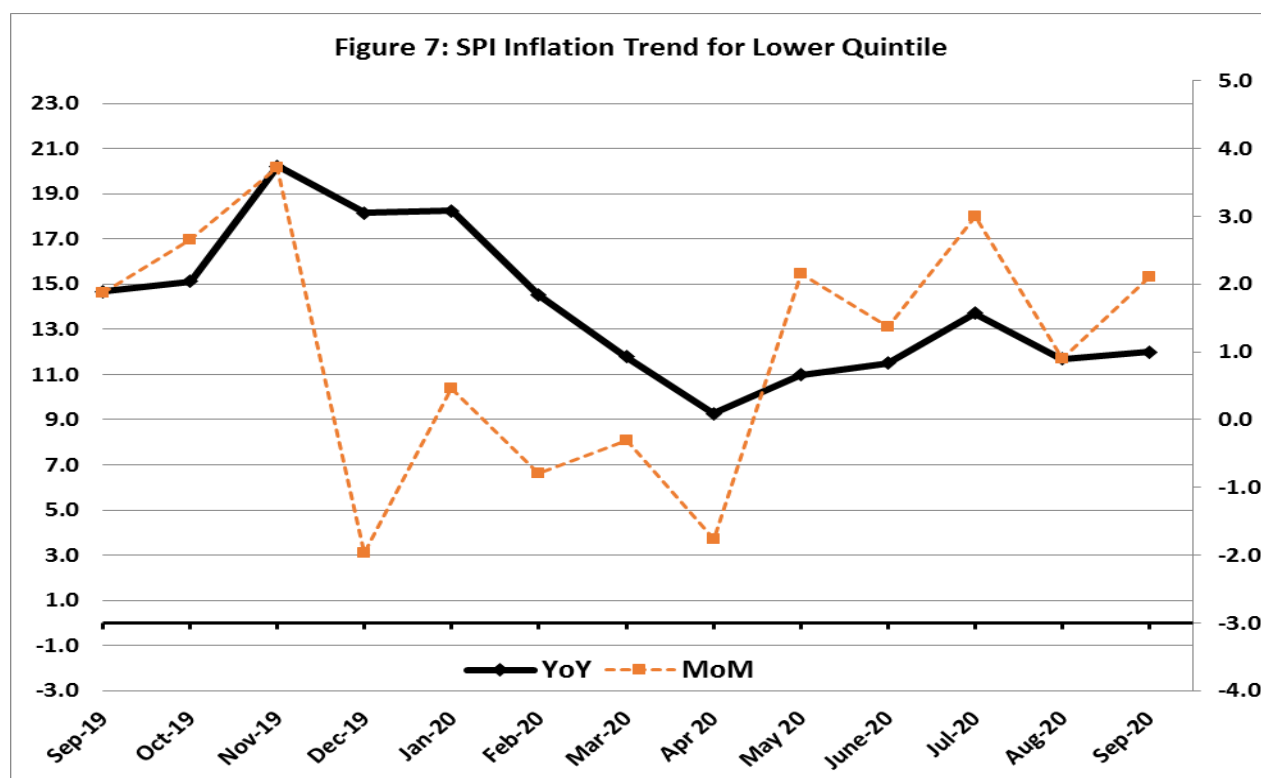
Decreased: Motor Fuels (7.21%) and Liquefied Hydrocarbons (3.96%).

IV. Sensitive Price Indicator

Quintile-wise percentage changes YoY and MoM are given below in Table 4. The series from September 2019 to September 2020 is also graphed below in Figure 7.

Table 4: Sensitive Price Indicator (Base 2015-16)					
Quintiles	Indices			% Change September 2020 Over	
	September 2020	August 2020	September 2019	August 2020	September 2019
1	143.90	140.95	128.51	2.09	11.98
2	138.63	135.55	124.12	2.27	11.69
3	139.94	137.28	126.70	1.94	10.45
4	136.36	133.98	124.38	1.78	9.63
5	137.43	135.27	127.78	1.60	7.55
Combined	137.04	134.57	125.72	1.84	9.00

Table 4.1 : Weekly Percentage Change of SPI During September-2020				
Quintiles	% Change with Previous week			
	03-09-2020	10-09-2020	17-09-2020	24-09-2020
Quintile 1	1.06	0.13	0.86	0.58
Combined	0.8	0.37	0.71	0.32



V. Wholesale Price Index

The Wholesale Price Index for September, 2020 increased by **1.05%** over August 2020. It increased by 4.26% over the corresponding month of the last year. YoY and MoM movements, from September, 2019 to September, 2020 are also graphed below in Figure 8.

Table 5: Wholesale Price Index by Group of Commodities (Base: 2015-16)									
No.	Group	Group Weight (%)	Indices			% Change September 2020 Over		Impact (In % points) September 2020 Over	
			Sep 20	Aug 20	Sep 19	Aug 20	Sep 19	Aug 20	Sep 19
	General	100.00	146.48	144.96	140.49	1.05	4.26	1.05	4.26
1.	Agriculture Forestry & Fishery	25.77	146.54	141.83	135.04	3.32	8.52	0.84	2.11
2.	Ores/Minerals, Elec., Gas & Water	12.01	165.18	165.44	159.04	-0.16	3.86	-0.02	0.53
3.	Food Products, Beverages & Tobacco, Textiles, Apparel & Leather Products	31.11	141.57	141.10	127.57	0.33	10.97	0.10	3.10
	i. Food Products, Beverages & Tobacco	20.07	140.17	139.45	122.77	0.52	14.17	0.10	2.49
	ii. Textiles & Apparels	10.33	145.84	145.83	138.10	0.01	5.60	0.00	0.57
	iii. Leather Products	0.71	118.88	118.88	110.18	0.00	7.90	0.00	0.04
4.	Other Transportable Goods	22.40	143.73	143.01	159.38	0.50	-9.82	0.11	-2.49
5.	Metal Product, Machinery & Equipment	8.72	145.10	144.73	128.66	0.26	12.78	0.02	1.02

Main contributors to month-on-month and year-on-year percentage changes are given below and detail is given in Annexure C.

1. **MONTH-ON-MONTH** Top few commodities which varied from previous month are given below: -

Increased: Vegetables(52.31%), Stimulant & Spice Crops(23.53%), Poultry(21.76%), Edible Roots / Potatoes(14.37), Eggs(5.16%), Oil Cakes(4.19%), Vegetable Ghee(3.9%), Salt & Pure Sodium Chloride(3.88%), Lathe Machines(3.18%), Other Oil Seeds(2.71%), Other Cereal Flour(2.69%), Fuel Wood in Logs(2.48%), Lighting equipment (2.38%), Mobil Oil(2.28%), Vegetable Oils Refined(2.18%), Vegetables & Fruit Juice(1.75%), Fertilizers(1.67%), Furnace Oil(1.35%) and Wheat (0.91%).

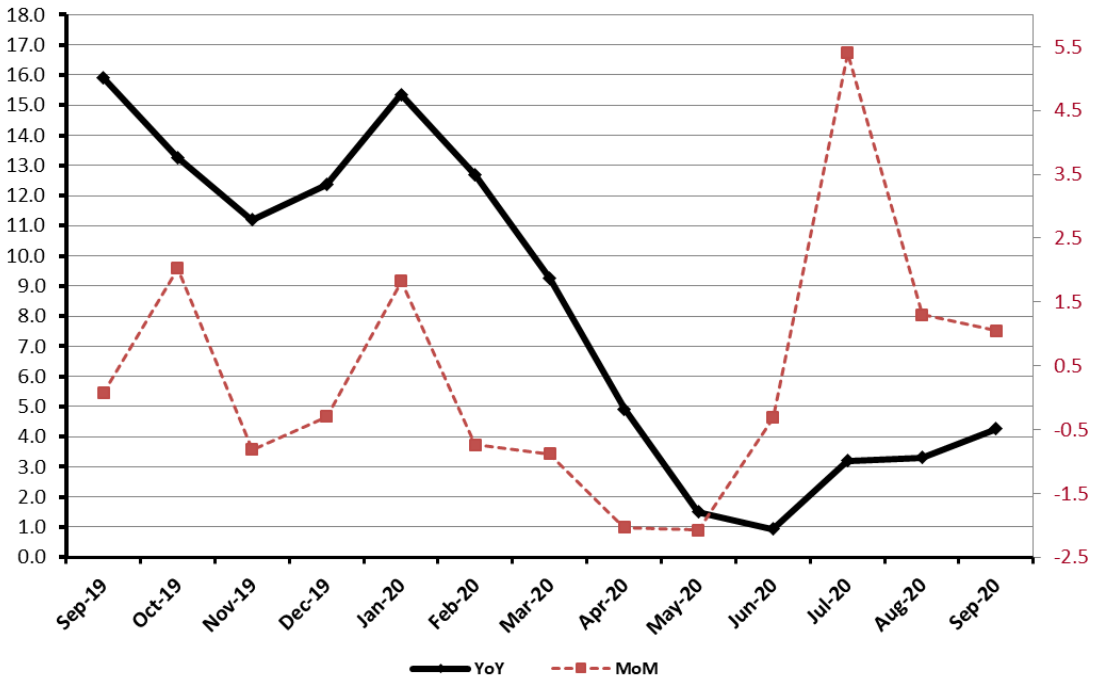
Decreased: Fresh Fruits (11.45%), Jowar (7.17%), Maize (2.69%), Sugar Refined (2.09%), Cement (0.45%), Electrical Energy (0.41%), Pulses (0.31%), Chemicals (0.08%) and Natural Gas Liquefied (0.01%).

2. **YEAR-ON-YEAR** Top few commodities which varied from previous year i.e. September, 2019 are given below: -

Increased: Spices(77.98%), Stimulant & Spice Crops(73.93%), Edible Roots / Potatoes(73.32%), Wheat (44.9%), Eggs(43.15%), Sugar Confectionary(38.72%), Cotton Fabrics(37.69%), Timber(36.76%), Sugar Refined(25.08%), Lathe Machines(25.03%), Bed Foam(24.62%), Footwear (21.71%), Cultivators(19.1%), Sugar Crops(15.57%), Raw Milk from Bovine Animals(15.54%), Vegetable Ghee(15.25%), Other Glass Articles(14.44%), Oil Cakes(14.29%), Meat of Animals(13.97%), Silk & Reyon Fabrics(13.82%), Rice(13.75%), Jowar(13.03%), Cotton Seeds(9.49%), Vegetables(8.71%), Fresh Fruits(3.95%) and Motor Vehicles(3.86%).

Decreased: Kerosene Oil(34.43%), Poultry(27.15%), Diesel Oil(25.34%), Furnace Oil(10.55%), Fertilizers(9.86%), Motor Spirit(8.65%), Fiber Crops(8.03%), Coal not Agglomerated(7.76%), Glass sheets(2.87%), Hides, Skins & Fur Skins, Raw(2.21%), Blended Yarn(1.51%), Maize(1.41%), Insecticides(0.76%) and Natural Gas Liquefied(0.21%).

Figure 8: WPI Inflation Trend



Annexure A:CPI (Urban) Index Numbers by Commodity Groups & Commodities (2015-16=100)

Item and Specification	Weight	Index Numbers			% Change in Sep 2020 over			
		Sep 20	Aug 20	Sep 19	Aug 2020	Sep 2019		
General	100.0000	137.53	135.82	127.72	+	1.26	+	7.68
Food and non-alcoholic Bevera	30.4215	142.73	137.90	125.97	+	3.50	+	13.30
01 Wheat	0.6120	156.54	155.93	110.14	+	0.39	+	42.13
02 Wheat flour	3.0075	136.03	135.30	113.19	+	0.54	+	20.18
03 Wheat products	0.0936	139.80	138.26	113.03	+	1.11	+	23.68
04 Besan	0.0830	118.83	116.52	109.74	+	1.98	+	8.28
05 Rice	1.1804	137.42	136.28	127.78	+	0.84	+	7.54
06 Bakery and confectionary	0.4770	138.33	135.60	120.07	+	2.01	+	15.21
07 Nimco	0.1224	132.95	131.66	115.67	+	0.98	+	14.94
08 Meat	2.0411	154.20	153.64	137.72	+	0.36	+	11.97
09 Chicken	1.3631	106.40	89.93	139.26	+	18.31	-	23.60
10 Fish	0.3855	111.86	111.48	121.00	+	0.34	-	7.55
11 Milk fresh	7.1070	132.92	131.39	117.63	+	1.16	+	13.00
12 Milk products	0.6407	136.35	134.08	122.55	+	1.69	+	11.26
13 Milk powder	0.3106	132.88	131.01	120.92	+	1.43	+	9.89
14 Eggs	0.5083	152.65	145.10	110.13	+	5.20	+	38.61
15 Butter	0.0932	172.14	171.57	139.46	+	0.33	+	23.43
16 Mustard oil	0.0120	128.98	127.61	111.34	+	1.07	+	15.84
17 Cooking oil	1.1016	142.54	142.03	128.25	+	0.36	+	11.14
18 Vegetable ghee	1.0324	148.51	147.32	128.23	+	0.81	+	15.82
19 Dry fruits	0.3299	130.99	130.72	118.02	+	0.21	+	10.99
20 Fresh fruits	1.4363	109.22	116.43	111.38	-	6.19	-	1.94
21 Pulse masoor	0.1624	104.03	102.40	86.61	+	1.59	+	20.11
22 Pulse moong	0.1697	148.32	143.36	106.47	+	3.46	+	39.31
23 Pulse mash	0.1152	102.27	99.52	76.01	+	2.76	+	34.55
24 Pulse gram	0.1660	119.32	114.17	108.32	+	4.51	+	10.16
25 Gram whohe	0.0912	122.25	122.84	118.10	-	0.48	+	3.51
26 Beans	0.0408	156.25	156.01	111.39	+	0.15	+	40.27
27 Potatoes	0.4496	271.28	255.49	162.25	+	6.18	+	67.20
28 Onions	0.5928	123.37	107.74	178.32	+	14.51	-	30.82
29 Tomatoes	0.3459	194.46	134.98	128.05	+	44.07	+	51.86
30 Fresh vegetables	1.5306	181.82	139.51	159.12	+	30.33	+	14.27
31 Sugar	1.1130	150.87	153.66	120.31	-	1.82	+	25.40
32 Gur	0.0379	144.31	140.02	125.25	+	3.06	+	15.22
33 Honey	0.1017	128.34	128.22	115.65	+	0.09	+	10.97
34 Sweetmeat	0.3535	144.79	144.06	134.30	+	0.51	+	7.81
35 Ice cream	0.1044	136.32	136.32	122.31	+	0.00	+	11.45
36 Condiments and Spices	1.3340	199.86	194.04	141.84	+	3.00	+	40.91
37 Dessert preparation	0.0419	125.99	125.85	112.76	+	0.11	+	11.73
38 Tea	0.8427	140.74	140.74	138.85	+	0.00	+	1.36
39 Beverages	0.8906	127.85	127.61	120.77	+	0.19	+	5.86
Alcoholic Beverages, Tobacco	0.8540	150.34	149.80	142.24	+	0.36	+	5.69
40 Cigarettes	0.7167	140.28	139.96	134.41	+	0.23	+	4.37
41 Pan prepared	0.1373	202.89	201.15	183.12	+	0.87	+	10.80
Clothing and footwear	8.0096	133.75	133.20	123.86	+	0.41	+	7.98
42 Cotton cloth	2.2227	137.16	137.16	125.93	+	0.00	+	8.92
43 Woolen cloth	0.8361	131.47	128.48	115.36	+	2.33	+	13.96
44 Readymade garments	1.3196	131.13	130.56	126.24	+	0.44	+	3.87
45 Woolen readymade garments	0.4307	127.17	126.88	115.98	+	0.23	+	9.65
46 Tailoring	1.0741	141.80	141.42	130.09	+	0.27	+	9.00
47 Hosiry	0.4070	130.41	129.98	123.72	+	0.33	+	5.41
48 Dopatta	0.1713	125.80	125.09	115.36	+	0.57	+	9.05
49 Cleaning and laundring	0.0665	142.15	137.55	126.74	+	3.34	+	12.16
50 Footware	1.4816	129.81	129.76	122.09	+	0.04	+	6.32
Housing, water, Elec., Gas an	27.0332	134.02	134.06	126.98	-	0.03	+	5.54
51 House rent	19.2558	132.08	132.08	126.65	+	0.00	+	4.29
52 Construcion input items	0.3765	146.96	143.57	137.95	+	2.36	+	6.53
53 Construction wage rates	0.2025	152.47	151.71	142.68	+	0.50	+	6.86
54 Water supply	0.5269	156.23	152.62	122.55	+	2.37	+	27.48
55 Garbage collection	0.1064	169.20	169.20	145.54	+	0.00	+	16.26
56 Electricity charges	4.5562	119.83	120.58	107.18	-	0.62	+	11.80
57 Gas charges	1.0807	216.94	216.94	216.94	+	0.00	+	0.00
58 Liquified Hydrocarbons	0.5064	127.28	129.23	127.07	-	1.51	+	0.17
59 Solid Fuel	0.4218	114.70	114.60	109.22	+	0.09	+	5.02
Furnishing and household equi	4.0937	131.57	130.64	123.78	+	0.71	+	6.29

Annexure A:CPI (Urban) Index Numbers by Commodity Groups & Commodities (2015-16=100)

Item and Specification	Weight	Index Numbers			% Change in Sep 2020 over		
		Sep 20	Aug 20	Sep 19	Aug 2020	Sep 2019	
60 Furniture and furnishing	0.4750	132.35	131.85	120.94	+	0.38	+ 9.43
61 Carpets	0.0308	112.12	112.09	107.34	+	0.03	+ 4.45
62 Household textiles	0.3420	127.04	126.95	122.73	+	0.07	+ 3.51
63 Household equipments	1.0032	131.92	131.38	123.08	+	0.41	+ 7.18
64 Plastic products	0.0536	119.17	118.25	114.78	+	0.78	+ 3.82
65 Major tools & equipments	0.0084	128.40	127.98	118.29	+	0.33	+ 8.55
66 Washing soap/detergents/match	1.4112	132.44	130.36	123.58	+	1.60	+ 7.17
67 Household servant	0.7695	132.74	132.71	128.63	+	0.02	+ 3.20
Health	2.3098	144.31	142.89	134.58	+	0.99	+ 7.23
68 Drugs and medicines	1.0735	142.68	142.25	132.04	+	0.30	+ 8.06
69 Therapeutic Appliances and Eq	0.0054	113.39	113.06	106.62	+	0.29	+ 6.35
70 Doctor (MBBS) clinic fee	0.4044	179.85	174.13	160.75	+	3.28	+ 11.88
71 Dental services	0.0156	121.35	120.43	115.43	+	0.76	+ 5.13
72 Medical tests	0.2367	130.30	128.31	121.27	+	1.55	+ 7.45
73 Hospitals services	0.5742	129.02	128.99	127.14	+	0.02	+ 1.48
Transport	6.1368	140.06	139.08	142.32	+	0.70	- 1.59
74 Motor vehicles	0.8097	149.05	148.34	145.22	+	0.48	+ 2.64
75 Motor vehicle accessories	0.1941	132.52	131.46	122.59	+	0.81	+ 8.10
76 Motor fuel	2.9088	146.18	145.93	157.35	+	0.17	- 7.10
77 Mechanical services	0.4290	132.38	131.58	126.04	+	0.61	+ 5.03
78 Motor vehicle tax	0.0482	126.72	126.72	126.72	+	0.00	+ 0.00
79 Transport services	1.7470	128.79	126.42	122.55	+	1.87	+ 5.09
Communication	2.3536	108.23	108.22	107.88	+	0.01	+ 0.32
80 Postal services	0.0190	147.05	147.05	147.05	+	0.00	+ 0.00
81 Communication apparatus	0.4524	118.77	118.75	116.98	+	0.02	+ 1.53
82 Communication Services	1.8822	105.30	105.30	105.30	+	0.00	+ 0.00
Recreation and culture	1.7301	120.03	119.36	116.63	+	0.56	+ 2.92
83 Recreation and culture	0.6478	111.59	111.23	108.10	+	0.32	+ 3.23
84 Text books	0.6655	119.49	119.02	117.03	+	0.39	+ 2.10
85 Newspapers	0.0716	151.55	151.55	151.55	+	0.00	+ 0.00
86 stationery	0.3452	130.38	128.60	124.60	+	1.38	+ 4.64
Education	4.8807	145.49	145.07	144.16	+	0.29	+ 0.92
87 Education	4.8807	145.49	145.07	144.16	+	0.29	+ 0.92
Restaurants and hotels	7.4050	134.14	133.37	124.01	+	0.58	+ 8.17
88 Readymade food	5.5235	134.48	133.47	123.72	+	0.76	+ 8.70
89 Marriage Hall Charges	1.7514	134.64	134.60	125.79	+	0.03	+ 7.04
90 Accommodation Services	0.1301	112.72	112.72	112.11	+	0.00	+ 0.54
Misc. goods and services	4.7720	144.68	145.22	130.90	-	0.37	+ 10.53
91 Personal Grooming Services	0.8001	132.07	130.63	122.93	+	1.10	+ 7.44
92 Electrical Appliances for Per	0.0465	118.32	118.32	115.76	+	0.00	+ 2.21
93 Appliances/Articles/Products	2.9807	131.35	130.58	122.96	+	0.59	+ 6.82
94 Personal Effects n.e.c.	0.9447	198.70	205.06	163.46	-	3.10	+ 21.56

Annexure B:CPI (Rural) Index Numbers by Commodity Groups & Commodities (2015-16=100)

Item and Specification	Weight	Index Numbers			% Change in Sep 2020 over	
		Sep 20	Aug 20	Sep 19	Aug 2020	Sep 2019
General	100.0000	139.51	136.84	125.55	+ 1.95	+ 11.12
Food and non-alcoholic Bevera	40.8668	145.72	139.97	125.24	+ 4.11	+ 16.35
01 Wheat	3.4736	159.34	151.71	109.80	+ 5.03	+ 45.12
02 Wheat Flour	3.4297	142.77	138.42	112.65	+ 3.14	+ 26.74
03 Wheat Products	0.1068	141.22	136.90	115.01	+ 3.16	+ 22.79
04 Besan	0.0728	122.81	119.29	112.23	+ 2.95	+ 9.43
05 Rice	1.5501	180.94	177.04	153.98	+ 2.20	+ 17.51
06 Bakery and Confectionary	0.3702	134.85	130.76	117.18	+ 3.13	+ 15.08
07 Nimco	0.0774	123.24	118.45	114.42	+ 4.04	+ 7.71
08 Meat	1.7146	151.62	151.37	138.59	+ 0.17	+ 9.40
09 Chicken	1.4641	111.28	101.65	138.02	+ 9.47	- 19.37
10 Fish	0.2640	120.53	120.53	121.76	+ 0.00	- 1.01
11 Milk fresh	10.3803	129.90	128.41	120.96	+ 1.16	+ 7.39
12 Milk products	0.9624	128.35	127.20	122.76	+ 0.90	+ 4.55
13 Milk powder	0.1062	124.94	124.83	116.05	+ 0.09	+ 7.66
14 Eggs	0.5665	144.90	143.57	108.77	+ 0.93	+ 33.22
15 Butter	0.3333	134.44	133.29	121.46	+ 0.86	+ 10.69
16 Mustard oil	0.0136	131.97	130.17	119.43	+ 1.38	+ 10.50
17 Cooking oil	0.6011	151.76	151.14	133.66	+ 0.41	+ 13.54
18 Vegetable ghee	2.3764	158.23	158.79	134.81	- 0.35	+ 17.37
19 Dry fruits	0.2496	142.36	141.45	126.17	+ 0.64	+ 12.83
20 Fresh fruits	1.4505	103.84	115.95	108.00	- 10.44	- 3.85
21 Pulse Masoor	0.2076	109.11	109.35	85.74	- 0.22	+ 27.26
22 Pulse Moong	0.2510	160.66	149.05	111.26	+ 7.79	+ 44.40
23 Pulse Mash	0.1465	103.63	99.68	76.26	+ 3.96	+ 35.89
24 Pulse Gram	0.2751	118.10	112.86	108.08	+ 4.64	+ 9.27
25 Gram Whole	0.1116	114.77	114.94	116.23	- 0.15	- 1.26
26 Beans	0.0896	167.28	166.25	122.98	+ 0.62	+ 36.02
27 Potatoes	0.7437	286.88	277.55	167.49	+ 3.36	+ <u>71.28</u>
28 Onions	0.8965	105.44	91.55	165.39	+ 15.17	- 36.25
29 Tomatoes	0.5069	173.44	133.08	110.39	+ 30.33	+ <u>57.12</u>
30 Fresh Vegetables	2.0947	169.91	117.03	142.94	+ 45.18	+ 18.87
31 Sugar	2.0296	153.02	153.99	122.14	- 0.63	+ 25.28
32 Gur	0.1522	149.80	143.26	132.68	+ 4.57	+ 12.90
33 Honey	0.0296	125.88	125.88	119.02	+ 0.00	+ 5.76
34 Sweetmeat	0.3967	131.54	131.40	121.23	+ 0.11	+ 8.50
35 Ice Cream	0.0568	132.99	132.99	119.16	+ 0.00	+ 11.61
36 Condiments and Spices	1.4919	196.03	185.58	124.22	+ 5.63	+ <u>57.81</u>
37 Dessert Preparation	0.0133	122.45	122.30	111.15	+ 0.12	+ 10.17
38 Tea	1.2566	137.95	137.87	134.36	+ 0.06	+ 2.67
39 Beverages	0.5537	129.40	128.25	121.73	+ 0.90	+ 6.30
Alcoholic Beverages, Tobacco	1.2786	134.39	133.51	126.72	+ 0.66	+ 6.05
40 Cigarettes	1.2364	133.08	132.38	126.02	+ 0.53	+ 5.60
41 Pan Prepared	0.0422	172.73	166.69	147.22	+ 3.62	+ 17.33
Clothing and footwear	9.4826	142.32	141.86	128.76	+ 0.32	+ 10.53
42 Cotton Cloth	2.8381	157.33	157.33	137.02	+ 0.00	+ 14.82
43 Woolen Cloth	1.0959	131.18	129.91	121.43	+ 0.98	+ 8.03
44 Readymade Garments	1.1345	135.67	134.72	126.80	+ 0.71	+ 7.00
45 Woolen Readymade Garments	0.5401	130.27	130.27	119.69	+ 0.00	+ 8.84
46 Tailoring	1.2999	139.34	139.24	131.38	+ 0.07	+ 6.06
47 Hosiry	0.4322	165.78	162.61	141.28	+ 1.95	+ 17.34
48 Dopatta	0.2078	135.09	134.29	121.32	+ 0.60	+ 11.35
49 Cleaning and Laundering	0.0176	140.30	138.61	118.36	+ 1.22	+ 18.54
50 Footware	1.9165	131.35	131.22	120.72	+ 0.10	+ 8.81
Housing, water, Elec., Gas an	18.4853	128.93	128.98	120.06	- 0.04	+ 7.39
51 House Rent	8.6110	132.21	132.21	125.99	+ 0.00	+ 4.94
52 Construction Input Items	0.6306	123.13	121.88	114.30	+ 1.03	+ 7.73
53 Construction Wage Rates	0.2526	153.03	151.57	140.49	+ 0.96	+ 8.93
54 Water Supply	0.0645	213.67	211.83	154.00	+ 0.87	+ 38.75
55 Garbage Collection	0.0080	142.31	142.31	132.21	+ 0.00	+ 7.64
56 Electricity Charges	3.4431	119.83	120.58	107.18	- 0.62	+ 11.80
57 Liquified Hydrocarbons	0.9994	117.92	118.33	122.78	- 0.35	- 3.96
58 Solid Fuel	4.4761	130.29	130.10	117.10	+ 0.15	+ 11.26

Annexure B:CPI (Rural) Index Numbers by Commodity Groups & Commodities (2015-16=100)

Item and Specification	Weight	Index Numbers			% Change in Sep 2020 over	
		Sep 20	Aug 20	Sep 19	Aug 2020	Sep 2019
<i>Furnishing and household equi</i>	4.1031	134.49	132.25	121.91	+ 1.69	+ 10.32
59 Furniture and Furnishing	0.5786	138.86	136.81	122.70	+ 1.50	+ 13.17
60 Household Textiles	0.4382	129.68	128.37	119.42	+ 1.02	+ 8.59
61 Household Equipments	1.2774	141.38	138.68	129.23	+ 1.95	+ 9.40
62 Plastic Products	0.0776	149.48	145.94	132.36	+ 2.43	+ 12.93
63 Major Tools and Equipments	0.0324	120.40	119.69	113.51	+ 0.59	+ 6.07
64 Washing Soaps, Detergents and	1.6989	128.66	126.48	116.46	+ 1.72	+ 10.48
<i>Health</i>	3.5141	144.60	143.24	132.33	+ 0.95	+ 9.27
65 Drugs and Medicines	1.5792	144.83	144.12	133.08	+ 0.49	+ 8.83
66 Doctor Clinic Fee	0.5128	172.49	169.48	147.94	+ 1.78	+ 16.59
67 Dental Services	0.0181	126.65	122.97	112.95	+ 2.99	+ 12.13
68 Medical Tests	0.3967	147.06	145.50	133.92	+ 1.07	+ 9.81
69 Hospitals Services	1.0073	129.38	127.98	122.95	+ 1.09	+ 5.23
<i>Transport</i>	5.5580	137.96	138.18	139.97	- 0.16	- 1.44
70 Motor Vehicles	0.7305	129.19	129.14	126.34	+ 0.04	+ 2.26
71 Motor Vehicles Accessories	0.1572	137.63	136.08	128.77	+ 1.14	+ 6.88
72 Motor Fuels	2.4932	144.97	144.91	156.23	+ 0.04	- 7.21
73 Mechanical Services	0.3645	153.45	153.45	146.72	+ 0.00	+ 4.59
74 Motor Vehicle Tax	0.0174	127.98	127.98	127.98	+ 0.00	+ 0.00
75 Transport Services	1.7952	128.77	129.70	122.66	- 0.72	+ 4.98
<i>Communication</i>	1.9940	104.84	104.76	104.60	+ 0.08	+ 0.23
76 Postal Services	0.0070	149.43	149.43	149.43	+ 0.00	+ 0.00
77 Communication Apparatus	0.3362	119.69	119.22	118.27	+ 0.39	+ 1.20
78 Communication Services	1.6508	101.63	101.63	101.63	+ 0.00	+ 0.00
<i>Recreation and culture</i>	1.3764	126.67	125.26	119.71	+ 1.13	+ 5.81
79 Recreation and Culture	0.4763	130.22	129.32	122.19	+ 0.70	+ 6.57
80 Text Books	0.5047	114.88	113.87	110.12	+ 0.89	+ 4.32
81 Newspapers	0.0230	161.68	161.68	161.68	+ 0.00	+ 0.00
82 Stationery	0.3724	135.94	133.27	126.95	+ 2.00	+ 7.08
<i>Education</i>	2.1342	134.08	133.48	132.50	+ 0.45	+ 1.19
83 Education	2.1342	134.08	133.48	132.50	+ 0.45	+ 1.19
<i>Restaurants and hotels</i>	6.1895	137.74	136.41	127.06	+ 0.98	+ 8.41
84 Readymade Food	3.8001	145.44	143.29	128.65	+ 1.50	+ 13.05
85 Marriage Hall Charges	2.2525	126.93	126.93	125.92	+ 0.00	+ 0.80
86 Accommodation Services	0.1369	101.59	101.59	101.59	+ 0.00	+ 0.00
<i>Misc. goods and services</i>	5.0174	148.03	147.38	129.24	+ 0.44	+ 14.54
87 Personal Grooming Services	1.5363	148.89	142.09	130.04	+ 4.79	+ 14.50
88 Appliances/Articles/Products	2.2746	125.33	123.79	115.28	+ 1.24	+ 8.72
89 Personal Effects n.e.c.	1.2065	189.74	198.58	154.52	- 4.45	+ 22.79

Annexure C: Wholesale Price Indices by Major Groups & Commodities

(2015-16=100)

Item and Specification	Weight	Index Numbers			% Change in Sep 2020 over			
		Sep 20	Aug 20	Sep 19	Aug 2020	Sep 2019		
General	100.0000	146.48	144.96	140.49	+	1.05	+	4.26
Agriculture Forestry & Fisher	25.7674	146.54	141.83	135.04	+	3.32	+	8.52
001 Wheat	0.6297	157.07	155.66	108.40	+	0.91	+	44.90
002 Maize	0.6764	136.08	139.84	138.03	-	2.69	-	1.41
003 Rice	2.4413	163.01	161.84	143.31	+	0.72	+	13.75
004 Sorghum / Jowar	0.0214	191.65	206.45	169.55	-	7.17	+	13.03
005 Millet / Bajra	0.0374	128.41	127.38	133.92	+	0.81	-	4.11
006 Vegetables	1.2441	235.49	154.61	216.62	+	<u>52.31</u>	+	8.71
007 Fresh Fruits	1.5144	127.50	143.98	122.65	-	11.45	+	3.95
008 Dry Fruits	0.2478	129.09	130.95	123.84	-	1.42	+	4.24
009 Cotton Seeds	1.1511	132.90	132.15	121.38	+	0.57	+	9.49
010 Other Oil Seeds	0.0722	141.18	137.46	126.90	+	2.71	+	11.25
011 Edible Roots / Potatoes	0.2540	358.64	313.59	206.92	+	14.37	+	<u>73.32</u>
012 Stimulant & Spice Crops	0.1634	408.29	330.53	234.74	+	23.53	+	<u>73.93</u>
013 Pulses	0.4901	119.94	120.31	107.87	-	0.31	+	11.19
014 Sugar Crops	1.0725	129.46	129.46	112.02	+	0.00	+	15.57
015 Fibre Crops	5.3169	145.46	145.46	158.16	+	0.00	-	8.03
016 Unmanufactured Tobacco	0.0742	212.75	197.99	159.77	+	7.45	+	33.16
017 Poultry	0.5633	104.51	85.83	143.46	+	21.76	-	27.15
018 Raw Milk from Bovine Animals	7.0279	131.55	131.14	113.86	+	0.31	+	15.54
019 Eggs	0.5034	150.85	143.45	105.38	+	5.16	+	43.15
020 Raw Animal Materials / Wool	0.0351	105.50	105.29	105.11	+	0.20	+	0.37
021 Hides, Skins & Fur Skins, Raw	0.4834	29.67	38.15	30.34	-	22.23	-	2.21
022 Fuel Wood in Logs	0.0179	119.09	116.21	107.76	+	2.48	+	10.51
023 Fish Live Fresh or Chilled	1.7295	157.77	154.34	146.66	+	2.22	+	7.58
Ores/Minerals, Elec., Gas & W	12.0069	165.18	165.44	159.04	-	0.16	+	3.86
024 Coal not Agglomerated	0.7508	75.79	75.79	82.17	+	0.00	-	7.76
025 Natural Gas Liquified	5.7065	195.57	195.59	195.99	-	0.01	-	0.21
026 Salt & Pure Sodium Chloride	0.0584	168.63	162.33	145.71	+	3.88	+	15.73
027 Electrical Energy	5.4912	145.80	146.40	131.29	-	0.41	+	11.05
Food, Beverages, Tobacco, Textil	31.1122	141.57	141.10	127.57	+	0.33	+	10.97
Food Products, Beverages &	20.0718	140.17	139.45	122.77	+	0.52	+	14.17
028 Meat of Animals	3.4559	154.14	153.94	135.25	+	0.13	+	13.97
029 Vegetables & Fruit Juice	0.0058	113.10	111.15	112.64	+	1.75	+	0.41
030 Dried Fruits & Nuts	0.1733	160.39	159.65	149.34	+	0.46	+	7.40
031 Fruit Juices	0.3880	127.01	125.76	116.92	+	0.99	+	8.63
032 Vegetable Oils Refined	1.9242	125.92	123.23	117.91	+	2.18	+	6.79
033 Vegetable Ghee	1.5632	149.73	144.11	129.92	+	3.90	+	15.25
034 Oil Cakes	0.9611	145.33	139.48	127.16	+	4.19	+	14.29
035 Processed Liquid Milk	4.4437	135.42	134.84	121.85	+	0.43	+	11.14
036 Milk & Cream in Solid Form	0.0316	130.15	128.95	121.39	+	0.93	+	7.22
037 Ice Cream	0.0047	137.64	137.64	107.34	+	0.00	+	28.23
038 Dairy Products N.E.C	0.0117	135.29	134.83	126.19	+	0.34	+	7.21
039 Wheat Flour	2.3034	144.96	147.02	112.97	-	1.40	+	28.32
040 Other Cereal Flour	0.0604	120.07	116.92	110.30	+	2.69	+	8.86
041 Sugar Refined	1.7975	150.22	153.43	120.10	-	2.09	+	25.08
042 Chocolate	0.0139	81.72	81.72	81.57	+	0.00	+	0.18
043 Sugar Confectionary	0.0738	171.75	171.45	123.81	+	0.17	+	38.72
044 Coffee & Tea	0.7303	129.75	129.05	126.33	+	0.54	+	2.71
045 Spices	0.1449	250.14	248.63	140.54	+	0.61	+	<u>77.98</u>
046 Other Food Products	0.0336	117.51	117.25	109.25	+	0.22	+	7.56
047 Mineral Water	0.0207	125.24	124.87	118.32	+	0.30	+	5.85
048 Beverages	0.6303	128.26	127.72	123.96	+	0.42	+	3.47
049 Tobacco Products	1.2998	104.23	104.23	104.23	+	0.00	+	0.00
Textiles & Apparels	10.3289	145.84	145.83	138.10	+	0.01	+	5.60
050 Cotton Yarn	5.2491	164.84	164.84	161.67	+	0.00	+	1.96
051 Nylon Yarn	0.1719	95.24	95.24	95.24	+	0.00	+	0.00
052 Blended Yarn	0.1689	120.22	120.22	122.06	+	0.00	-	1.51
053 Woven Fabrics	0.0128	137.73	137.73	123.42	+	0.00	+	11.59
054 Cotton Fabrics	0.6343	150.25	150.20	109.12	+	0.03	+	37.69
055 Other Fabrics	1.1016	113.59	113.59	112.30	+	0.00	+	1.15
056 Silk & Reyon Fabrics	0.7350	129.92	129.92	114.15	+	0.00	+	13.82
057 Towels	0.1235	125.47	125.47	106.41	+	0.00	+	17.91
058 Blankets	0.0029	104.49	104.35	95.81	+	0.13	+	9.06
059 Bed Sheets	0.0913	119.63	119.63	106.74	+	0.00	+	12.08

Annexure C: Wholesale Price Indices by Major Groups & Commodities

(2015-16=100)

Item and Specification	Weight	Index Numbers			% Change in Sep 2020 over		
		Sep 20	Aug 20	Sep 19	Aug 2020	Sep 2019	
060 Quilts	0.0019	109.35	109.35	104.68	+	0.00	+ 4.46
061 Woolen Carpets	0.0383	137.01	137.01	125.43	+	0.00	+ 9.23
062 Synthetic Carpets	0.0566	115.72	115.72	105.96	+	0.00	+ 9.21
063 Hosiery Products	0.8832	123.09	123.03	110.93	+	0.05	+ 10.96
064 Readymade Garments	1.0576	131.75	131.74	123.15	+	0.01	+ 6.98
Leather Products	0.7115	118.88	118.88	110.18	+	0.00	+ 7.90
065 Leather Without Hair	0.2973	108.00	108.00	105.65	+	0.00	+ 2.22
066 Other Leather N.E.C	0.2567	111.77	111.77	106.90	+	0.00	+ 4.56
067 Footwears	0.1575	151.00	151.00	124.07	+	0.00	+ 21.71
Other Transportable Goods	22.3979	143.73	143.01	159.38	+	0.50	- 9.82
068 Timber	0.0165	152.83	151.80	111.75	+	0.68	+ 36.76
069 Printing Paper	0.4279	130.70	130.70	130.70	+	0.00	+ 0.00
070 Hard Board	0.1579	146.50	146.50	146.50	+	0.00	+ 0.00
071 Motor Spirit	1.6268	146.32	146.32	160.18	+	0.00	- 8.65
072 Diesel Oil	5.4849	134.12	134.12	179.65	+	0.00	- 25.34
073 Kerosine Oil	0.2151	128.04	128.04	195.27	+	0.00	- 34.43
074 Furnace Oil	3.2664	227.82	224.79	254.70	+	1.35	- 10.55
075 Mobil Oil	0.7114	122.33	119.60	120.04	+	2.28	+ 1.91
076 Chemicals	1.7720	132.84	132.94	129.09	-	0.08	+ 2.90
077 Dyeing Material	0.1539	146.16	146.16	136.76	+	0.00	+ 6.87
078 Fertilizers	2.8657	95.67	94.10	106.14	+	1.67	- 9.86
079 Pesticides	0.2763	141.59	141.18	110.51	+	0.29	+ 28.12
080 Insecticides	0.1276	111.49	111.49	112.34	+	0.00	- 0.76
081 Paints & Varnishes	0.1916	135.82	135.82	124.47	+	0.00	+ 9.12
082 Medicines	1.1428	145.01	144.83	133.92	+	0.12	+ 8.28
083 Soaps & Detergents	0.8168	110.00	109.71	109.62	+	0.26	+ 0.35
084 Auto Tyres	0.2703	124.76	124.74	121.30	+	0.02	+ 2.85
085 Plastic Products	0.4550	117.75	117.75	108.12	+	0.00	+ 8.91
086 Glass sheets	0.2089	138.76	138.47	142.86	+	0.21	- 2.87
087 Other Glass Articles	0.1635	149.95	149.89	131.03	+	0.04	+ 14.44
088 Ceramics & Sanitary Fixture	0.0244	124.15	124.15	123.82	+	0.00	+ 0.27
089 Bricks, Blocks & Tiles	0.1566	129.55	128.35	119.29	+	0.93	+ 8.60
090 Cement	1.8145	118.45	118.98	112.53	-	0.45	+ 5.26
091 Bed Foam	0.0006	147.59	146.96	118.43	+	0.43	+ 24.62
092 Matches	0.0505	1171.7	1171.7	1170.1	+	0.00	+ 0.14
		5	5	1			
Metal Product, Machinery & Eq	8.7156	145.10	144.73	128.66	+	0.26	+ 12.78
093 Steel Bar & Sheets	1.4615	160.01	161.34	159.78	-	0.82	+ 0.14
094 Pipe Fittings	0.0780	144.78	144.78	135.47	+	0.00	+ 6.87
095 Steel Products	0.3879	134.16	134.16	133.18	+	0.00	+ 0.74
096 Engines & Motors	0.0046	107.29	107.29	107.29	+	0.00	+ 0.00
097 Vacuum Pumps	0.0155	107.56	107.56	107.56	+	0.00	+ 0.00
098 Air Conditioners	0.0049	115.95	115.95	112.46	+	0.00	+ 3.10
099 Cultivators	0.0551	103.75	103.75	87.11	+	0.00	+ 19.10
100 Chuff Cutter	0.1293	110.00	110.00	102.86	+	0.00	+ 6.94
101 Tractors	0.0028	129.36	122.16	109.22	+	5.89	+ 18.44
102 Lathe Machines	0.0525	210.12	203.64	168.06	+	3.18	+ 25.03
103 Concrete Mixture	0.0107	100.00	100.00	100.00	+	0.00	+ 0.00
104 Fridge, WashM, SewM, Fans, Iron	1.1645	154.41	153.70	144.29	+	0.46	+ 7.01
105 Electric Wires	0.0912	137.76	137.76	125.73	+	0.00	+ 9.57
106 Lighting Equipments	1.4431	119.49	116.71	110.13	+	2.38	+ 8.50
107 Radio & Television	0.1843	104.52	104.51	97.48	+	0.01	+ 7.22
108 Motor Vehicles	0.0244	156.45	156.45	150.63	+	0.00	+ 3.86
109 Motorcycles	0.2570	124.50	124.50	119.59	+	0.00	+ 4.11
110 Bicycles	3.3483	153.05	153.05	120.58	+	0.00	+ 26.93