



# Monthly Review on Price Indices



**September, 2019**  
**(Base Year 2015-16)**

**Government of Pakistan**  
**Ministry Of Planning, Development & Reform**  
**Pakistan Bureau of Statistics**  
**Islamabad**



## Inflation in Brief

1. CPI inflation General, increased by 11.4% on year-on-year basis in September 2019 as compared to an increase of 10.5% in the previous month and 5.4% in September 2018. On month-on-month basis, it increased by 0.8% in September 2019 as compared to an increase of 1.6% in the previous month and 0.0% in September 2018.
2. CPI inflation Urban, increased by 11.6% on year-on-year basis in September 2019 as compared to an increase of 10.6% in the previous month and 5.6% in September 2018. On month-on-month basis, it increased by 0.7% in September 2019 as compared to an increase of 1.5% in the previous month and a decrease of 0.1% in September 2018.
3. CPI inflation Rural, increased by 11.1% on year-on-year basis in September 2019 as compared to an increase of 10.3% in the previous month and 5.1% in September 2018. On month-on-month basis, it increased by 0.8% in September 2019 as compared to an increase of 1.9% in the previous month and 0.0% in September 2018.
4. SPI inflation on YoY increased by 14.7% in September 2019 as compared to an increase of 12.1% a month earlier and an increase of 0.4% in September 2018. On MoM basis, it increased by 1.9% in September 2019 as compared to an increase of 2.7% a month earlier and a decrease of 0.4% in September 2018.
5. WPI inflation on YoY basis increased by 15.9% in September 2019 as compared to an increase of 14.1% a month earlier and an increase of 14.6% in September 2018. WPI inflation on MoM basis increased by 0.1% in September 2019 as compared to an increase of 1.2% a month earlier and a decrease of 1.5% in corresponding month of last year i.e. September 2018.
6. Figures 1.a and 1.b show graphically the data of Table 1. Table 1.1 shows "Period Average" and "YoY" percent changes in indices of three years.

Table 1.a General Inflation (%) (Base 2015-16)																		
Period	CPI														SPI**		WPI	
	General						Food				Non-Food							
	National		Urban		Rural		Urban		Rural		Urban		Rural		YoY	MoM	YoY	MoM
Aug-18	6.2	-0.3	6.2	-0.3	6.2	-0.3	3.0	-0.5	3.7	-0.2	8.0	-0.2	8.3	-0.4	2.9	-0.2	16.7	0.5
Sep-18	5.4	0.0	5.6	-0.1	5.1	0.0	1.5	-0.8	1.5	-0.3	8.0	0.3	8.1	0.3	0.4	-0.4	14.6	-1.5
Oct-18	6.5	2.1	7.0	2.2	5.7	2.0	3.0	2.6	2.5	3.0	9.4	2.0	8.4	1.1	1.7	2.3	18.6	4.4
Nov-18	5.7	-0.1	6.3	-0.1	4.7	-0.2	1.7	-0.2	0.9	-0.7	9.0	0.0	8.0	0.3	0.8	-0.7	18.6	1.0
Dec-18	5.4	-0.3	5.9	-0.3	4.6	-0.3	0.6	-1.8	0.5	-1.4	9.0	0.5	8.1	0.6	1.5	-0.3	16.5	-1.3
Jan-19	5.6	0.3	6.2	0.4	4.6	0.0	2.6	0.3	1.8	0.0	8.2	0.5	7.0	0.0	3.4	0.4	12.6	-0.8
Feb-19	6.8	0.9	7.2	0.9	6.0	0.9	5.9	2.3	5.2	1.7	8.0	0.1	6.7	0.2	7.2	2.4	13.9	1.6
Mar-19	8.6	2.0	8.9	1.9	8.2	2.2	8.8	2.5	9.3	3.3	9.0	1.5	7.3	1.3	10.5	2.1	16.6	2.2
Apr-19	8.3	0.7	8.4	0.8	8.1	0.6	8.3	1.3	9.3	0.6	8.4	0.6	7.2	0.6	10.0	0.5	17.1	1.8
May-19	8.4	0.6	8.5	0.7	8.3	0.5	9.0	1.3	9.7	0.6	8.3	0.3	7.1	0.4	9.9	0.6	16.5	1.5
Jun-19	8.0	0.5	8.1	0.3	7.9	0.7	7.5	-0.3	9.1	0.7	8.4	0.7	7.0	0.7	9.3	0.9	14.0	0.2
Jul-19	8.4	1.8	8.7	2.0	7.9	1.6	7.9	1.0	9.3	1.7	9.2	2.5	6.7	1.5	8.9	1.0	13.3	3.1
Aug-19	10.5	1.6	10.6	1.5	10.3	1.9	11.9	3.1	12.6	2.9	9.9	0.5	8.4	1.1	12.1	2.7	14.1	1.2
Sep-19	11.4	0.8	11.6	0.7	11.1	0.8	15.0	2.0	15.0	1.8	9.7	0.0	8.0	0.0	14.7	1.9	15.9	0.1

\*\* SPI for quintile 1. Digits 0.0\* are due to rounding off.

7. Core inflation measured by non-food non-energy Urban CPI (Core NFNE) increased by 8.4% on (YoY) basis in September 2019 as compared to an increase of 8.5% in the previous month and 7.0% in September 2018. On (MoM) basis, it increased by 0.4% in September 2019 as compared to increase of 0.4% in previous month, and an increase of 0.4% in corresponding month of last year i.e. September 2018.
8. Core inflation measured by non-food non-energy Rural CPI (Core NFNE) increased by 8.8% on (YoY) basis in September 2019 as compared to an increase of 8.8% in the previous month and 6.7% in September 2018. On (MoM) basis, it increased by 0.3% in September 2019 as compared to an increase of 1.0% in previous month, and an increase of 0.3% in corresponding month of last year i.e. September 2018.
9. Core inflation, measured by 20% weighted trimmed mean Urban CPI (Core Trimmed) increased by 9.3% on (YoY) basis in September 2019 as compared to 8.5% in the previous month and by 5.8% in September 2018. On (MoM) basis, it increased by 0.6% in September 2019 as compared to an increase of 0.6% in the previous month and an increase of 0.2% in corresponding month of last year i.e. September 2018.
10. Core inflation, measured by 20% weighted trimmed mean Rural CPI (Core Trimmed) increased by 9.6% on (YoY) basis in September 2019 as compared to 8.7% in the previous month and by 6.0% in September 2018. On (MoM) basis, it increased by 0.6% in September 2019 as compared to an increase of 1.2% in the previous month and an increase of 0.2% in corresponding month of last year i.e. September 2018.

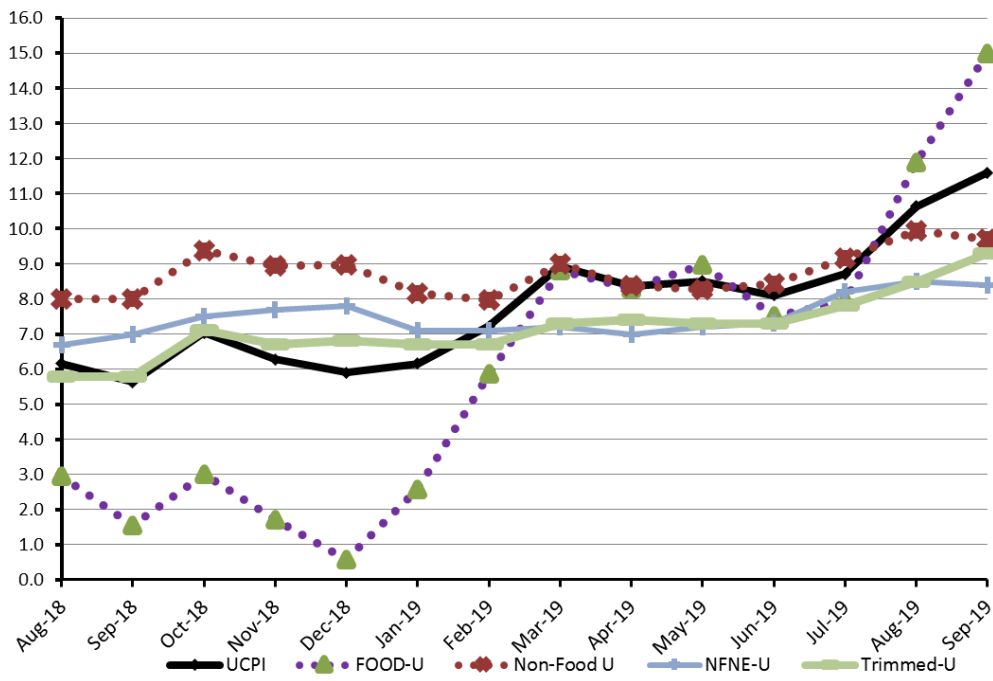
**Table 1.b Core Inflation (%) (Base 2015-16)**

Period	NFNE				Trimmed			
	Urban		Rural		Urban		Rural	
	YoY	MoM	YoY	MoM	YoY	MoM	YoY	MoM
Aug-18	6.7	0.2	6.7	0.1	5.8	0.2	6.3	0.2
Sep-18	7.0	0.4	6.7	0.3	5.8	0.2	6.0	0.2
Oct-18	7.5	1.2	6.7	1.0	7.1	1.1	6.7	0.9
Nov-18	7.7	0.4	7.1	0.7	6.7	0.3	6.3	0.5
Dec-18	7.8	0.4	7.4	0.5	6.8	0.3	6.6	0.4
Jan-19	7.1	0.7	6.6	0.2	6.7	0.6	6.1	0.4
Feb-19	7.1	0.2	6.4	0.2	6.7	0.2	6.2	0.3
Mar-19	7.2	0.8	6.5	0.6	7.3	0.8	6.5	0.6
Apr-19	7.0	1.1	6.8	1.2	7.4	1.1	7.3	0.8
May-19	7.2	0.5	6.8	0.4	7.3	0.5	7.2	0.5
Jun-19	7.3	0.2	6.7	0.3	7.3	0.4	7.2	0.7
Jul-19	8.2	1.8	7.8	2.0	7.8	1.4	7.4	1.6
Aug-19	8.5	0.4	8.8	1.0	8.5	0.6	8.7	1.2
Sep-19	8.4	0.4	8.8	0.3	9.3	0.6	9.6	0.6

**Table 1.1 Period Average and YoY % Change**

Index	Average July- September % changes			September over September % changes		
	2019-2020	2018-2019	2017-2018	2019-2020	2018-2019	2017-2018
CPI (National)	10.08	6.08	4.30	11.37	5.42	4.66
CPI(Urban)	10.30	6.17	4.86	11.56	5.64	5.16
CPI(Rural)	9.74	5.95	3.46	11.10	5.09	3.91
SPI	11.88	2.49	2.44	14.67	0.41	4.13
WPI	14.41	15.89	2.21	15.90	14.64	2.71

**Figure 1: UCPI Inflation YoY, Special Indices**



**Figure 2: RPI Inflation YoY, Special Indices**

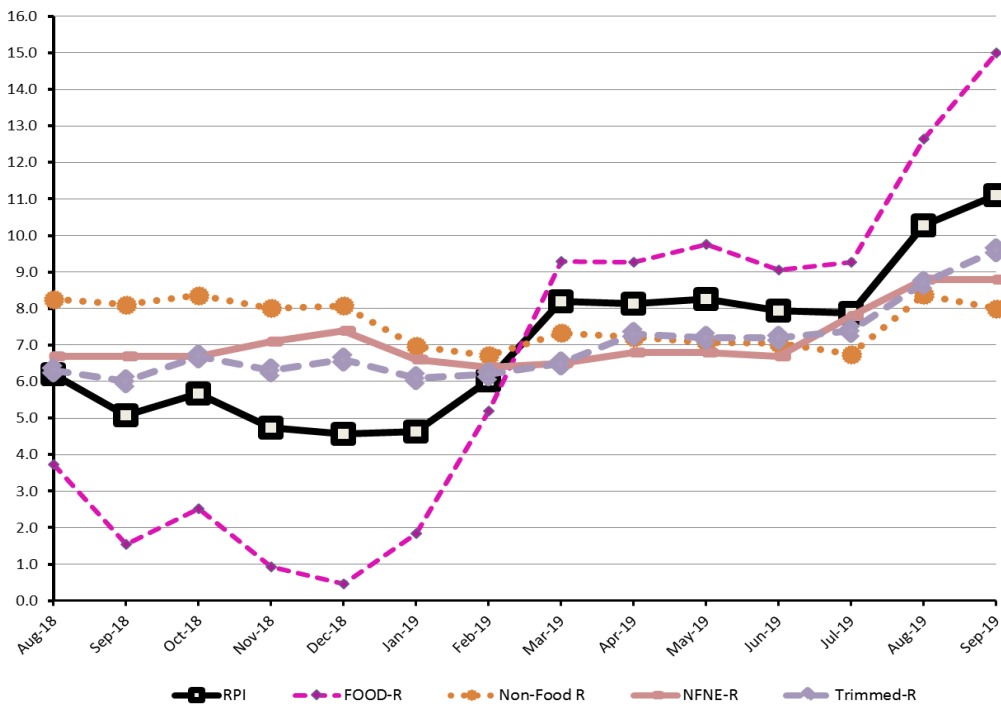


Figure 4: RPI Inflation MoM, Special Indices

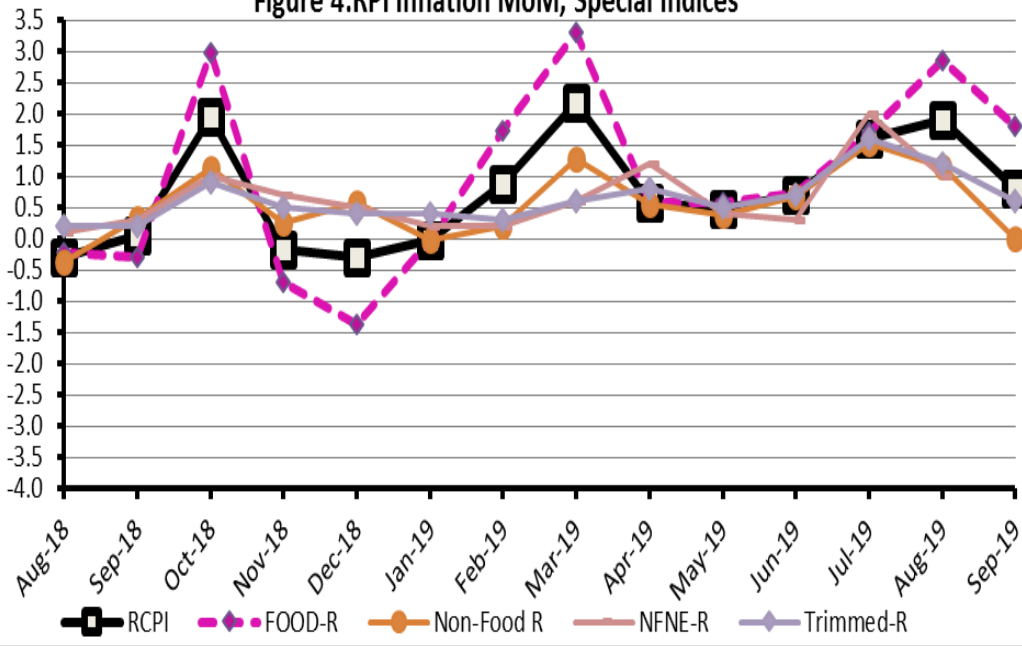
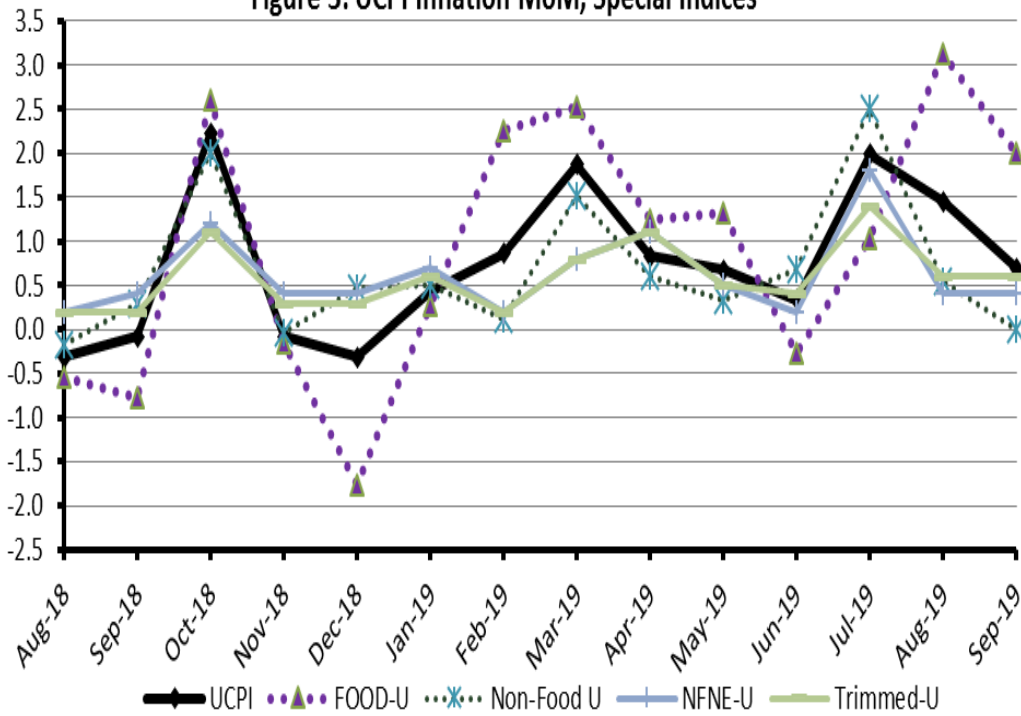
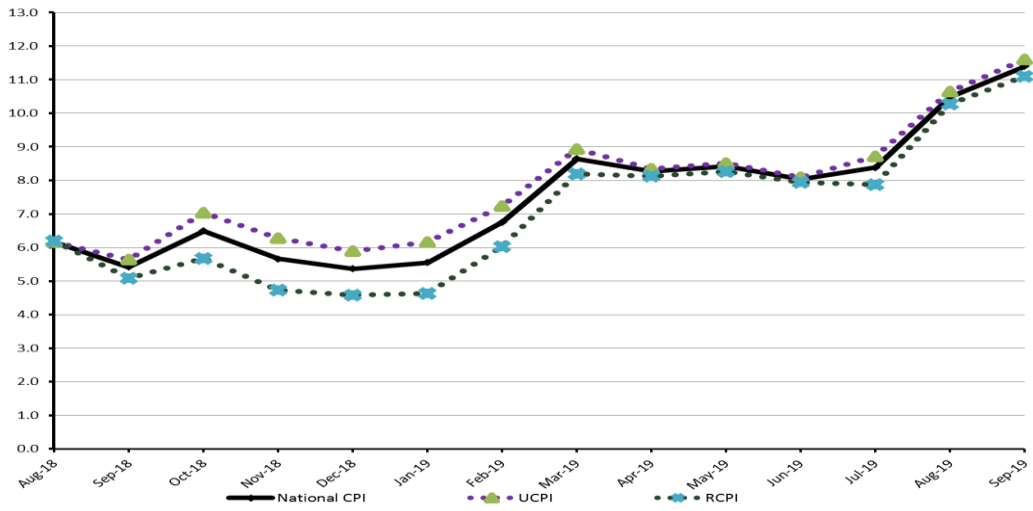


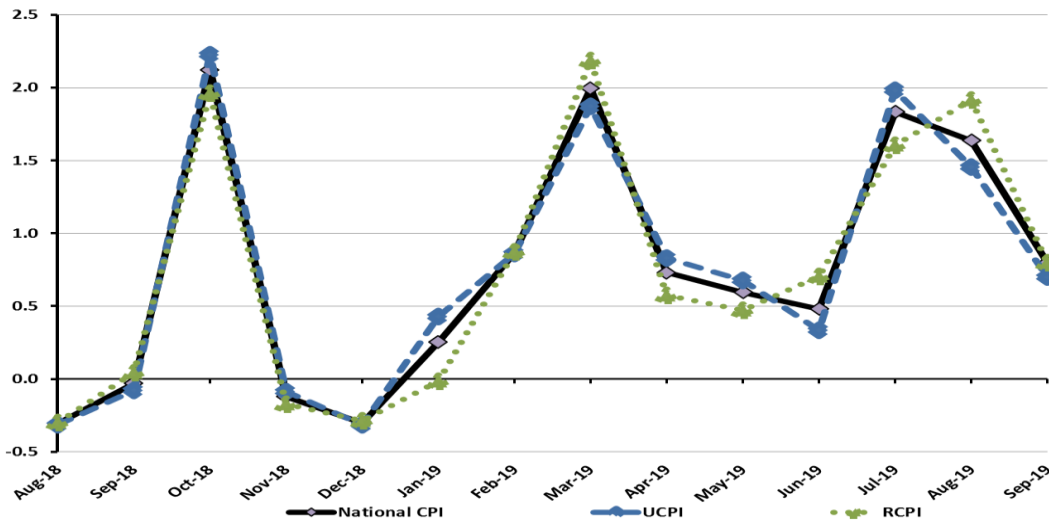
Figure 3: UCPI Inflation MoM, Special Indices



**Figure 5: CPI Y.o.Y (National, Urban, Rural)**



**Figure 6: CPI M.o.M (National, Urban, Rural)**



## I. National Consumer Price Index (N-CPI)

The National Consumer Price Index of September 2019, is increased by 0.77% over August 2019 and increased by 11.37% over corresponding month of the last year i.e. September 2018.

**Table 1 : Consumer Price Index (Urban) by Group of Commodities and Services (Base 2015-16)**

No	Group	Group Weight (%)	Indices			% Change September 2019 Over		Impact (In % points) Sep 2019 Over	
			Sep 2019	Aug 2019	Sep 2018	Aug 2019	Sep 2018	Aug 2019	Sep 2018
	General	<b>100.00</b>	<b>126.86</b>	<b>125.89</b>	<b>113.90</b>	<b>0.77</b>	<b>11.37</b>	<b>0.77</b>	<b>11.37</b>
1.	Food & Non-alcoholic Bev.	34.58	125.63	123.02	108.45	2.12	15.83	0.72	5.21
	Non-perishable Food Items	29.60	122.76	120.85	107.76	1.58	13.92	0.45	3.90
	Perishable Food Items	4.99	142.62	135.89	112.58	4.95	26.68	0.27	1.31
2.	Alcoholic Bev. & Tobacco	1.02	134.51	133.91	103.49	0.45	29.97	0.00	0.28
3.	Clothing & Footwear	8.60	126.01	125.52	115.67	0.39	8.94	0.03	0.78
4.	Housing, Water, Electricity, Gas & Fuels	23.63	124.82	125.03	117.07	-0.17	6.62	-0.04	1.61
5.	Furnishing & Household Equipment Maintenance	4.10	123.03	122.14	110.14	0.73	11.71	0.03	0.46
6.	Health	2.79	133.45	132.85	119.50	0.45	11.67	0.01	0.34
7.	Transport	5.91	141.44	143.65	120.11	-1.54	17.76	-0.10	1.11
8.	Communication	2.21	106.70	106.67	102.30	0.02	4.31	0.00	0.09
9.	Recreation & Culture	1.59	117.69	117.30	109.14	0.34	7.84	0.00	0.12
10.	Education	3.79	141.54	141.12	133.31	0.30	6.18	0.01	0.27
11.	Restaurants & Hotels	6.92	125.10	124.54	117.88	0.45	6.13	0.03	0.44
12.	Miscellaneous	4.87	130.22	128.63	114.83	1.24	13.40	0.06	0.66



## II. Urban Consumer Price Index (UCPI)

The Urban Consumer Price Index of September 2019, is increased by 0.75% over August 2019 and increased by 11.56% over corresponding month of the last year i.e. September 2018.

**Table 2 : Consumer Price Index (Urban) by Group of Commodities and Services (Base 2015-16)**

No	Group	Group Weight (%)	Indices			% Change September 2019 Over		Impact (In % points) Sep 2019 Over	
			Sep 2019	Aug 2019	Sep 2018	Aug 2019	Sep 2018	Aug 2019	Sep 2018
	General	100.00	127.72	126.77	114.49	0.75	11.56	0.75	11.56
1.	Food & Non-alcoholic Bev.	30.42	125.97	123.19	108.27	2.26	16.35	0.67	4.70
	Non-perishable Food Items	25.97	122.58	120.58	107.19	1.66	14.36	0.41	3.49
	Perishable Food Items	4.46	145.72	138.38	114.56	5.30	27.20	0.26	1.21
2.	Alcoholic Bev.& Tobacco	0.85	142.24	141.93	110.51	0.22	28.71	0.00	0.24
3.	Clothing & Footwear	8.01	123.86	123.36	113.67	0.41	8.96	0.03	0.71
4.	Housing, Water, Electricity, Gas & Fuels	27.03	126.98	127.15	117.19	-0.13	8.35	-0.04	2.31
5.	Furnishing & Household Equipment Maintenance	4.09	123.78	123.05	110.04	0.59	12.49	0.02	0.49
6.	Health	2.31	134.58	133.97	121.13	0.46	11.10	0.01	0.27
7.	Transport	6.14	142.32	144.36	120.00	-1.41	18.60	-0.10	1.20
8.	Communication	2.35	107.88	107.84	102.18	0.04	5.58	0.00	0.12
9.	Recreation & Culture	1.73	116.63	116.23	108.25	0.34	7.74	0.01	0.13
10.	Education	4.88	144.16	143.62	135.48	0.38	6.41	0.02	0.37
11.	Restaurants & Hotels	7.41	124.01	123.22	118.08	0.64	5.02	0.05	0.38
12.	Miscellaneous	4.77	130.90	128.97	115.78	1.50	13.06	0.07	0.63

Main contributors to month-on-month and year-on-year percentage changes are given below and detail is given in Annexure A.

1. **Month-on-month** Top few commodities which varied from previous month are given below:-

**Food Items Increased:** Fresh vegetables(15.78%), Onions(10.86%), Tea(8.15%), Milk products(4.74%), Wheat flour (3.22%), Potatoes(3.16%), Milk fresh (2.83%), Wheat(1.92%), Milk powder (1.47%), Pulse gram(1.41%), Vegetable ghee(1.3%), Gur(1.16%) and Pulse masoor(1.11%).

**Decreased:** Tomatoes(5.84%), Fresh fruits(5.6%), Chicken (4.42%) and Eggs (2.36%).

**Non-food Items Increased:** Doctor (MBBS) clinic fee(1.79%), stationery(1.33%), Cotton cloth(0.93%), Construction input items(0.88%) and Tailoring (0.79%).

**Decreased:** Motor fuel(3.23%), Electricity charges(0.99%) and Liquefied Hydrocarbons(0.76%)

**Year-on-Year:** Top few commodities which varied from previous year i.e. September 2018 are given below:-

**Food Items Increased:** Onions(108.71%), Chicken (79.39%), Pulse moong (46.77%), Cigarettes (37.97%), Sugar(36.93%), Potatoes(36.32%), Pulse mash(29.6%), Fresh vegetables(27.77%), Gur(27.53%), Cooking oil(20.3%), Vegetable ghee(18.33%), Tea(16.38%), Pulse masoor(13.42%), Meat(12.65%), Wheat flour (12.27%), Milk powder (10.86%), Pulse gram(10.81%) and Wheat(10.12%).

**Decreased:** Tomatoes (15.06%)

**Non-food Items Increased:** Gas charges(114.64%), Motor vehicle accessories(22.14%), Motor fuel(21.98%), Motor vehicles(21.21%), Construction input items(18.96%), Doctor (MBBS) clinic fee(15.84%), Cotton cloth(13.87%), Footwear(11.94%) and Transport services(11.48%).

**Decreased:** Liquefied Hydrocarbons (21.1%) and Electricity charges (1.19%).

### III. Rural Consumer Price Index (RCPI)

The Rural Consumer Price Index of September 2019, is increased by 0.79% over August 2019 and increased by 11.10% over corresponding month of the last year i.e. September 2018.

**Table 3 : Consumer Price Index (Rural) by Group of Commodities and Services (Base 2015-16)**

No	Group	Group Weight (%)	Indices			% Change September 2019 Over		Impact (In % points) Sep 2019 Over	
			Sep 2019	Aug 2019	Sep 2018	Aug 2019	Sep 2018	Aug 2019	Sep 2018
	General	<b>100.00</b>	125.55	124.56	113.01	0.79	11.10	0.79	11.10
1.	Food & Non-alcoholic Bev.	40.87	125.24	122.83	108.66	1.96	15.26	0.79	6.00
	Non-perishable Food Items	35.08	122.96	121.16	108.39	1.49	13.44	0.51	4.52
	Perishable Food Items	5.79	139.01	132.99	110.27	4.53	26.06	0.28	1.47
2.	Alcoholic Bev.& Tobacco	1.28	126.72	125.83	96.42	0.71	31.43	0.01	0.34
3.	Clothing & Footwear	9.48	128.76	128.27	118.23	0.38	8.91	0.04	0.88
4.	Housing, Water, Electricity, Gas & Fuels	18.49	120.06	120.36	116.80	-0.25	2.79	-0.04	0.53
5.	Furnishing & Household Equipment Maintenance	4.10	121.91	120.77	110.28	0.94	10.55	0.04	0.42
6.	Health	3.51	132.33	131.74	117.89	0.45	12.25	0.02	0.45
7.	Transport	5.56	139.97	142.48	120.28	-1.76	16.37	-0.11	0.97
8.	Communication	1.99	104.60	104.60	102.50	0.00	2.05	0.00	0.04
9.	Recreation & Culture	1.38	119.71	119.33	110.83	0.32	8.01	0.00	0.11
10.	Education	2.13	132.50	132.50	125.80	0.00	5.33	0.00	0.13
11.	Restaurants & Hotels	6.19	127.06	126.91	117.51	0.12	8.13	0.01	0.52
12.	Miscellaneous	5.02	129.24	128.13	113.46	0.87	13.91	0.04	0.70

Main contributors to month-on-month and year-on-year percentage changes are given below and detail is given in Annexure A.

**1. Month-on-month** Top few commodities which varied from previous month are given below:-

**Food Items Increased:** Fresh Vegetables(16.29%), Onions(10.77%), Tea(6.4%), Gur(2.83%), Wheat Flour(2.72%), Wheat(2.15%), Milk fresh(1.9%), Vegetable ghee(1.88%), Milk products(1.79%), Mustard oil(1.77%), Beans(1.75%), Pulse Gram(1.28%) and Meat(1.13%).

**Decreased:** Fresh fruits(8.92%), Tomatoes(7.2%), Pulse Mash(2.21%), Eggs(1.23%) and Chicken(0.86%).

**Non-food Items Increased:** Hosiery (2.35%), Plastic Products (2.11%) and Doctor Clinic Fee (1.89%).

**Decreased:** Motor Fuels (3.56%), Liquefied Hydrocarbons (1.92%) and Electricity Charges (0.99%).

**2. Year-on-Year:** Top few commodities which varied from previous year i.e. September 2018 are given below:-

**Food Items Increased:** Onions(102.31%), Chicken(63.47%), Pulse Moong(48.54%), Gur(38.32%), Sugar(38.25%), Potatoes(34.08%), Cigarettes(32.81%), Pulse Mash(26.11%), Cooking oil(21.23%), Fresh Vegetables(20.09%), Vegetable ghee(17.1%), Milk powder(15.33%), Tea(15.24%), Wheat Flour(12.85%), Pulse Masoor(12.77%), Meat(11.58%), Pulse Gram(11.06%), Fresh fruits(10.74%) and Wheat(10.31%)

**Decreased:** Tomatoes(18.37%), Gram Whole(2.25%) and Eggs(0.09%).

**Non-food Items Increased:** Motor Fuels(21.47%), Motor Vehicles(17.56%), Doctor Clinic Fee(17.1%), Cotton Cloth(10.59%), Personal Grooming Services(10.47%) and Construction Wage Rates(10.35%).

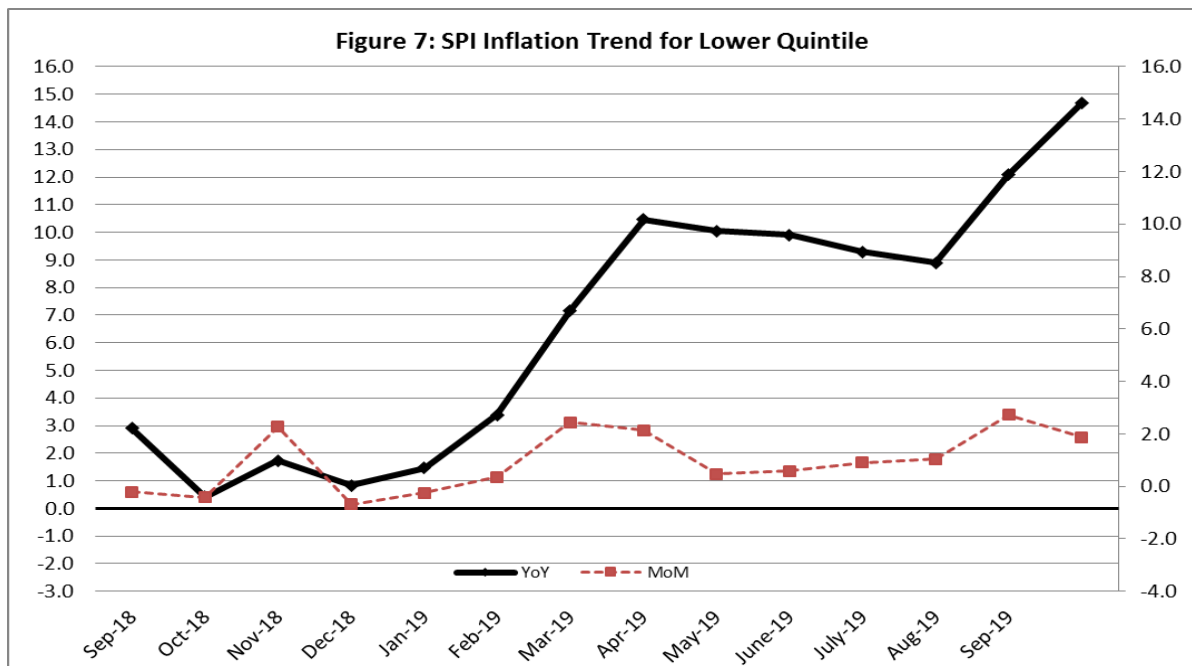
**Decreased:** Liquefied Hydrocarbons(14.07%) and Electricity Charges(1.19%).

#### IV. Sensitive Price Indicator

Quintile-wise percentage changes YoY and MoM are given below in Table 3. The series from September 2018 to September 2019 is also graphed below in Figure 3.

Table 4: Sensitive Price Indicator (Base 2015-16)					
Quintiles	Indices			% Change September 2019 Over	
	September 2019	August 2019	September 2018	August 2019	September 2018
1	128.51	126.15	112.07	1.87	14.67
2	124.12	121.84	107.43	1.87	15.54
3	126.70	124.48	106.17	1.78	19.34
4	124.38	122.27	104.29	1.73	19.26
5	127.78	126.19	108.02	1.26	18.29
Combined	125.72	123.85	106.96	1.51	17.54

Table 4.1 : Weekly Percentage Change of SPI During September-17				
Quintiles	% Change with Previous week			
	05.09.2019	12.09.2019	19.09.2019	26.09.2019
Quintile 1	0.19	0.87	0.89	0.17
Combined	-0.19	0.76	1.01	0.19



## V. Wholesale Price Index

The Wholesale Price Index for September, 2019 increased by 0.07% over August 2019. It increased by 15.90% over the corresponding month of the last year. YoY and MoM movements, from August, 2018 to September, 2019 are also graphed below in Figure 4.

**Table 5 : Wholesale Price Index by Group of Commodities (Base 2015-16)**

No.	Group	Group Weight (%)	Indices			% Change September 2019 Over		Impact (In % points) Sep 2019 Over	
			Sep 2019	Aug 2019	Sep 2018	Aug 2019	Sep 2018	Aug 2019	Sep 2018
	<b>General</b>	<b>100.00</b>	<b>140.49</b>	<b>140.39</b>	<b>121.22</b>	<b>0.07</b>	<b>15.90</b>	<b>0.07</b>	<b>15.90</b>
1.	Agriculture, Forestry & Fishery Products	25.77	135.04	128.79	119.81	4.85	12.71	1.15	3.24
2.	Ores & Minerals, Electricity, Gas & Water	12.01	159.04	159.39	107.31	-0.22	48.21	-0.03	5.12
3.	Food Products, Beverages & Tobacco, Textiles, Apparel & Leather Products	31.11	127.57	127.21	114.73	0.28	11.19	0.08	3.30
	i. Food Products, Bev. & Tobacco	20.07	122.77	120.86	108.49	1.58	13.16	0.27	2.36
	ii. Textiles and Apparel	10.33	138.10	140.72	127.62	-1.86	8.21	-0.19	0.89
	iii. Leather Products	0.71	110.18	110.18	103.78	0.00	6.17	0.00	0.04
4.	Other Transportable Goods except Metal Products, Machinery & Equipment	22.40	159.38	166.83	142.23	-4.47	12.06	-1.19	3.17
5.	Metal Products, Machinery & Equipment	8.72	128.66	127.59	113.69	0.84	13.17	0.07	1.08

Main contributors to month-on-month and year-on-year percentage changes are given below and detail is given in Annexure B.

1. **Month-on-month** Top few commodities which varied from previous month i.e. August, 2019 are given below:-

**Increased:** Vegetables(45.48%), Poultry(8.06%), Wheat Flour(4.85%), Fuel Wood in Logs(4.71%), Fertilizers(4.44%), Coffee & Tea(4.26%), Medicines(3.71%), Maize(3.47%), Raw Milk from Bovine Animals(3.43%), Printing Paper(3.35%), Electric Wires(2.94%), Pulses(2.87%), Meat of Animals(2.8%), Pesticides(2.7%), Wheat (2.11%), Vegetable Ghee(1.87%), Cotton Seeds(1.82%), Rice(1.71%), Vegetable Oils Refined(1.64%), Cement(1.31%), Motorcycles(1.14%), Fruit Juices(1.1%) and Beverages(1%).

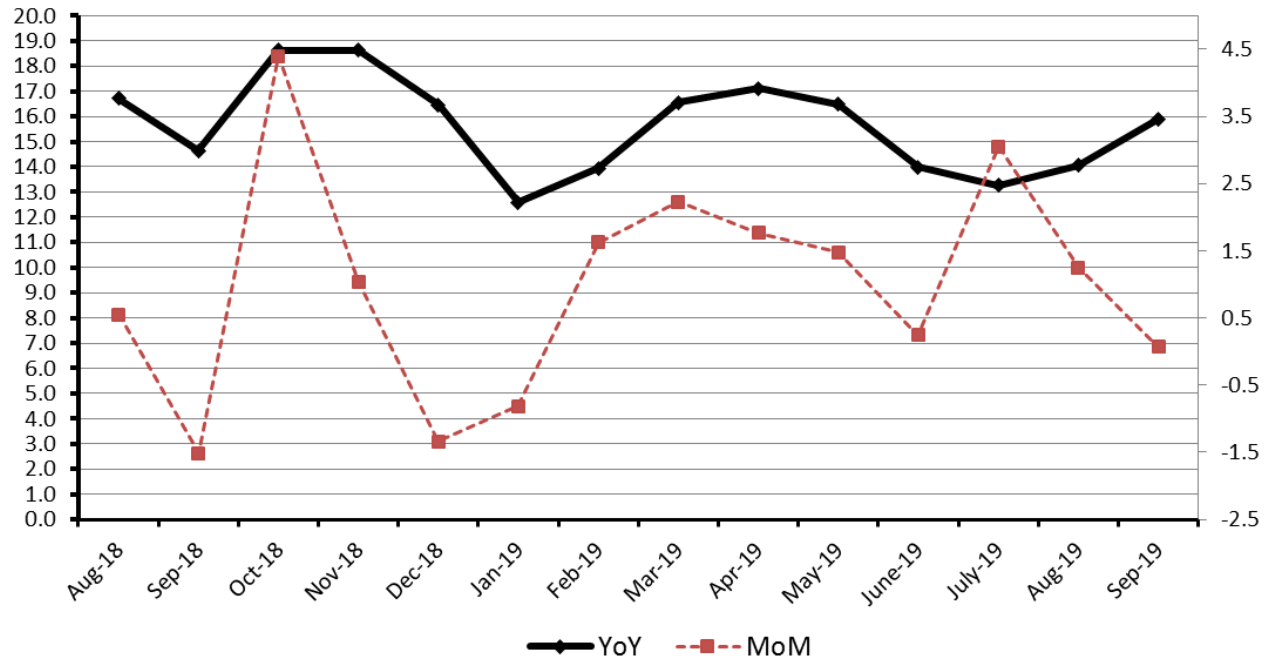
**Decreased:** Furnace Oil(13.39%), Hides, Skins & Fur Skins, Raw(12.77%), Millet / Bajra(6.97%), Diesel Oil(5.08%), Kerosene Oil(4.11%), Motor Spirit(4.01%), Cotton Yarn(3.13%) and Fresh Fruits(1.9%).

**Year-on-year** Top few commodities which varied from previous year i.e. September, 2018 are given below:-

**Increased:** Poultry(87.02%), Natural Gas Liquified(86.91%), Vegetables(51.65%), Sugar Refined(37.54%), Dyeing Material(32.51%), Spices(27.66%), Sugar Crops(27.27%), Cotton Seeds(26.42%), Fertilizers(25.21%), Motor Vehicles(24.84%), Steel Bar & Sheets(24.08%), Motor Spirit(22.68%) and Diesel Oil(20.37%).

**Decreased:** Hides, Skins & Fur Skins, Raw(31.08%) and Eggs(5.51%).

Figure 8: WPI Inflation



**Annexure A:CPI (Urban) Index Numbers by Commodity Groups & Commodities (2015-16=100)**

Item and Specification	Weight	Index Numbers			% Change in Sep 2019 over	
		Sep 19	Aug 19	Sep 18	Aug 2019	Sep 2018
<b>General</b>	<b>100.0000</b>	<b>127.72</b>	<b>126.77</b>	<b>114.49</b>	<b>+ 0.75</b>	<b>+ 11.56</b>
<b>Food and non-alcoholic Bevera</b>	<b>30.4215</b>	<b>125.97</b>	<b>123.19</b>	<b>108.27</b>	<b>+ 2.26</b>	<b>+ 16.35</b>
01 Wheat	0.6120	110.14	108.06	100.02	+ 1.92	+ 10.12
02 Wheat flour	3.0075	113.19	109.66	100.82	+ 3.22	+ 12.27
03 Wheat products	0.0936	113.03	112.56	104.11	+ 0.42	+ 8.57
04 Besan	0.0830	109.74	109.49	101.67	+ 0.23	+ 7.94
05 Rice	1.1804	127.78	127.33	122.29	+ 0.35	+ 4.49
06 Bakery and confectionary	0.4770	120.07	117.16	107.26	+ 2.48	+ 11.94
07 Nimco	0.1224	115.67	115.50	108.99	+ 0.15	+ 6.13
08 Meat	2.0411	137.72	136.89	122.26	+ 0.61	+ 12.65
09 Chicken	1.3631	139.26	145.70	77.63	- 4.42	+ 79.39
10 Fish	0.3855	121.00	121.83	107.59	- 0.68	+ 12.46
11 Milk fresh	7.1070	117.63	114.39	109.95	+ 2.83	+ 6.98
12 Milk products	0.6407	122.55	117.00	113.07	+ 4.74	+ 8.38
13 Milk powder	0.3106	120.92	119.17	109.07	+ 1.47	+ 10.86
14 Eggs	0.5083	110.13	112.79	109.90	- 2.36	+ 0.21
15 Butter	0.0932	139.46	136.56	110.57	+ 2.12	+ 26.13
16 Mustard oil	0.0120	111.34	111.36	105.44	- 0.02	+ 5.60
17 Cooking oil	1.1016	128.25	127.53	106.61	+ 0.56	+ 20.30
18 Vegetable ghee	1.0324	128.23	126.59	108.37	+ 1.30	+ 18.33
19 Dry fruits	0.3299	118.02	117.74	107.91	+ 0.24	+ 9.37
20 Fresh fruits	1.4363	111.38	117.99	104.42	- 5.60	+ 6.67
21 Pulse masoor	0.1624	86.61	85.66	76.36	+ 1.11	+ 13.42
22 Pulse moong	0.1697	106.47	105.67	72.54	+ 0.76	+ 46.77
23 Pulse mash	0.1152	76.01	75.72	58.65	+ 0.38	+ 29.60
24 Pulse gram	0.1660	108.32	106.81	97.75	+ 1.41	+ 10.81
25 Gram whohe	0.0912	118.10	117.64	117.00	+ 0.39	+ 0.94
26 Beans	0.0408	111.39	111.12	101.65	+ 0.24	+ 9.58
27 Potatoes	0.4496	162.25	157.28	119.02	+ 3.16	+ 36.32
28 Onions	0.5928	178.32	160.85	85.44	+ 10.86	+ 108.7
						1
29 Tomatoes	0.3459	128.05	135.99	150.75	- 5.84	- 15.06
30 Fresh vegetables	1.5306	159.12	137.43	124.54	+ 15.78	+ 27.77
31 Sugar	1.1130	120.31	120.07	87.86	+ 0.20	+ 36.93
32 Gur	0.0379	125.25	123.81	98.21	+ 1.16	+ 27.53
33 Honey	0.1017	115.65	113.38	108.39	+ 2.00	+ 6.70
34 Sweetmeat	0.3535	134.30	130.71	121.20	+ 2.75	+ 10.81
35 Ice cream	0.1044	122.31	119.23	109.12	+ 2.58	+ 12.09
36 Condiments and Spices	1.3340	141.84	139.73	117.75	+ 1.51	+ 20.46
37 Dessert preparation	0.0419	112.76	112.62	105.76	+ 0.12	+ 6.62
38 Tea	0.8427	138.85	128.39	119.31	+ 8.15	+ 16.38
39 Beverages	0.8906	120.77	118.97	109.06	+ 1.51	+ 10.74
<b>Alcoholic Beverages, Tobacco</b>	<b>0.8540</b>	<b>142.24</b>	<b>141.93</b>	<b>110.51</b>	<b>+ 0.22</b>	<b>+ 28.71</b>
40 Cigarettes	0.7167	134.41	134.35	97.42	+ 0.04	+ 37.97
41 Pan prepared	0.1373	183.12	181.46	178.86	+ 0.91	+ 2.38
<b>Clothing and footwear</b>	<b>8.0096</b>	<b>123.86</b>	<b>123.36</b>	<b>113.67</b>	<b>+ 0.41</b>	<b>+ 8.96</b>
42 Cotton cloth	2.2227	125.93	124.77	110.59	+ 0.93	+ 13.87
43 Woolen cloth	0.8361	115.36	115.35	108.23	+ 0.01	+ 6.59
44 Readymade garments	1.3196	126.24	126.21	119.87	+ 0.02	+ 5.31
45 Woolen readymade garments	0.4307	115.98	115.81	108.52	+ 0.15	+ 6.87
46 Tailoring	1.0741	130.09	129.07	124.58	+ 0.79	+ 4.42
47 Hosiry	0.4070	123.72	123.52	116.18	+ 0.16	+ 6.49
48 Dopatta	0.1713	115.36	114.86	109.42	+ 0.44	+ 5.43
49 Cleaning and laundrying	0.0665	126.74	126.08	116.73	+ 0.52	+ 8.58
50 Footware	1.4816	122.09	122.07	109.07	+ 0.02	+ 11.94
<b>Housing, water, Elec., Gas an</b>	<b>27.0332</b>	<b>126.98</b>	<b>127.15</b>	<b>117.19</b>	<b>- 0.13</b>	<b>+ 8.35</b>
51 House rent	19.2558	126.65	126.65	118.96	+ 0.00	+ 6.46
52 Construcion input items	0.3765	137.95	136.74	115.96	+ 0.88	+ 18.96
53 Construction wage rates	0.2025	142.68	142.04	130.04	+ 0.45	+ 9.72
54 Water supply	0.5269	122.55	122.55	118.59	+ 0.00	+ 3.34
55 Garbage collection	0.1064	145.54	145.38	143.43	+ 0.11	+ 1.47
56 Electricity charges	4.5562	107.18	108.25	108.47	- 0.99	- 1.19

**Annexure A:CPI (Urban) Index Numbers by Commodity Groups & Commodities (2015-16=100)**

Item and Specification	Weight	Index Numbers			% Change in Sep 2019 over	
		Sep 19	Aug 19	Sep 18	Aug 2019	Sep 2018
57 Gas charges	1.0807	216.94	216.94	101.07	+ 0.00	+ 114.64
58 Liquified Hydrocarbons	0.5064	127.07	128.04	161.05	- 0.76	- 21.10
59 Solid Fuel	0.4218	109.22	108.75	105.68	+ 0.43	+ 3.35
<b>Furnishing and household equi</b>	<b>4.0937</b>	<b>123.78</b>	<b>123.05</b>	<b>110.04</b>	<b>+ 0.59</b>	<b>+ 12.49</b>
60 Furniture and furnishing	0.4750	120.94	120.43	112.33	+ 0.42	+ 7.66
61 Carpets	0.0308	107.34	107.32	104.53	+ 0.02	+ 2.69
62 Household textiles	0.3420	122.73	122.53	113.28	+ 0.16	+ 8.34
63 Household equipments	1.0032	123.08	121.61	111.62	+ 1.21	+ 10.27
64 Plastic products	0.0536	114.78	114.39	110.15	+ 0.34	+ 4.20
65 Major tools & equipments	0.0084	118.29	117.82	112.73	+ 0.40	+ 4.93
66 Washing soap/detergents/match	1.4112	123.58	122.93	109.05	+ 0.53	+ 13.32
67 Household servant	0.7695	128.63	128.31	107.12	+ 0.25	+ 20.08
<b>Health</b>	<b>2.3098</b>	<b>134.58</b>	<b>133.97</b>	<b>121.13</b>	<b>+ 0.46</b>	<b>+ 11.10</b>
68 Drugs and medicines	1.0735	132.04	131.84	113.68	+ 0.15	+ 16.15
69 Therapeutic Appliances and Eq	0.0054	106.62	106.58	106.29	+ 0.04	+ 0.31
70 Doctor (MBBS) clinic fee	0.4044	160.75	157.92	138.77	+ 1.79	+ 15.84
71 Dental services	0.0156	115.43	115.30	116.84	+ 0.11	- 1.21
72 Medical tests	0.2367	121.27	121.34	115.34	- 0.06	+ 5.14
73 Hospitals services	0.5742	127.14	127.04	125.27	+ 0.08	+ 1.49
<b>Transport</b>	<b>6.1368</b>	<b>142.32</b>	<b>144.36</b>	<b>120.00</b>	<b>- 1.41</b>	<b>+ 18.60</b>
74 Motor vehicles	0.8097	145.22	144.24	119.81	+ 0.68	+ 21.21
75 Motor vehicle accessories	0.1941	122.59	122.32	100.37	+ 0.22	+ 22.14
76 Motor fuel	2.9088	157.35	162.60	129.00	- 3.23	+ 21.98
77 Mechanical services	0.4290	126.04	121.22	110.82	+ 3.98	+ 13.73
78 Motor vehicle tax	0.0482	126.72	126.72	105.82	+ 0.00	+ 19.75
79 Transport services	1.7470	122.55	122.65	109.93	- 0.08	+ 11.48
<b>Communication</b>	<b>2.3536</b>	<b>107.88</b>	<b>107.84</b>	<b>102.18</b>	<b>+ 0.04</b>	<b>+ 5.58</b>
80 Postal services	0.0190	147.05	147.05	145.98	+ 0.00	+ 0.73
81 Communication apparatus	0.4524	116.98	116.73	104.79	+ 0.21	+ 11.63
82 Communication Services	1.8822	105.30	105.30	101.11	+ 0.00	+ 4.14
<b>Recreation and culture</b>	<b>1.7301</b>	<b>116.63</b>	<b>116.23</b>	<b>108.25</b>	<b>+ 0.34</b>	<b>+ 7.74</b>
83 Recreation and culture	0.6478	108.10	108.11	106.12	- 0.01	+ 1.87
84 Text books	0.6655	117.03	116.83	106.20	+ 0.17	+ 10.20
85 Newspapers	0.0716	151.55	151.55	120.00	+ 0.00	+ 26.29
86 stationery	0.3452	124.60	122.97	113.73	+ 1.33	+ 9.56
<b>Education</b>	<b>4.8807</b>	<b>144.16</b>	<b>143.62</b>	<b>135.48</b>	<b>+ 0.38</b>	<b>+ 6.41</b>
87 Education	4.8807	144.16	143.62	135.48	+ 0.38	+ 6.41
<b>Restaurants and hotels</b>	<b>7.4050</b>	<b>124.01</b>	<b>123.22</b>	<b>118.08</b>	<b>+ 0.64</b>	<b>+ 5.02</b>
88 Readymade food	5.5235	123.72	122.67	116.35	+ 0.86	+ 6.33
89 Marriage Hall Charges	1.7514	125.79	125.79	124.05	+ 0.00	+ 1.40
90 Accommodation Services	0.1301	112.11	112.07	111.31	+ 0.04	+ 0.72
<b>Misc. goods and services</b>	<b>4.7720</b>	<b>130.90</b>	<b>128.97</b>	<b>115.78</b>	<b>+ 1.50</b>	<b>+ 13.06</b>
91 Personal Grooming Services	0.8001	122.93	122.08	114.86	+ 0.70	+ 7.03
92 Electrical Appliances for Per	0.0465	115.76	115.37	113.93	+ 0.34	+ 1.61
93 Appliances/Articles/Products	2.9807	122.96	120.74	110.92	+ 1.84	+ 10.85
94 Personal Effects n.e.c.	0.9447	163.46	161.43	131.97	+ 1.26	+ 23.86

**Annexure B:CPI (Rural) Index Numbers by Commodity Groups & Commodities (2015-16=100)**

Item and Specification	Weight	Index Numbers			% Change in Sep 2019 over	
		Sep 19	Aug 19	Sep 18	Aug 2019	Sep 2018
<b>General</b>	<b>100.0000</b>	<b>125.55</b>	<b>124.56</b>	<b>113.01</b>	<b>+ 0.79</b>	<b>+ 11.10</b>
<b>Food and non-alcoholic Bevera</b>	<b>40.8668</b>	<b>125.24</b>	<b>122.83</b>	<b>108.66</b>	<b>+ 1.96</b>	<b>+ 15.26</b>
01 Wheat	3.4736	109.80	107.49	99.54	+ 2.15	+ 10.31
02 Wheat Flour	3.4297	112.65	109.67	99.82	+ 2.72	+ 12.85
03 Wheat Products	0.1068	115.01	114.05	109.86	+ 0.84	+ 4.69
04 Besan	0.0728	112.23	112.39	106.21	- 0.14	+ 5.67
05 Rice	1.5501	153.98	153.15	142.64	+ 0.54	+ 7.95
06 Bakery and Confectionary	0.3702	117.18	116.38	108.64	+ 0.69	+ 7.86
07 Nimco	0.0774	114.42	113.42	107.36	+ 0.88	+ 6.58
08 Meat	1.7146	138.59	137.04	124.21	+ 1.13	+ 11.58
09 Chicken	1.4641	138.02	139.22	84.43	- 0.86	+ <u>63.47</u>
10 Fish	0.2640	121.76	122.71	105.12	- 0.77	+ 15.83
11 Milk fresh	10.3803	120.96	118.71	112.77	+ 1.90	+ 7.26
12 Milk products	0.9624	122.76	120.60	114.41	+ 1.79	+ 7.30
13 Milk powder	0.1062	116.05	115.26	100.62	+ 0.69	+ 15.33
14 Eggs	0.5665	108.77	110.13	108.87	- 1.23	- 0.09
15 Butter	0.3333	121.46	120.95	113.48	+ 0.42	+ 7.03
16 Mustard oil	0.0136	119.43	117.35	109.64	+ 1.77	+ 8.93
17 Cooking oil	0.6011	133.66	132.59	110.25	+ 0.81	+ 21.23
18 Vegetable ghee	2.3764	134.81	132.32	115.12	+ 1.88	+ 17.10
19 Dry fruits	0.2496	126.17	125.57	119.43	+ 0.48	+ 5.64
20 Fresh fruits	1.4505	108.00	118.58	97.53	- 8.92	+ 10.74
21 Pulse Masoor	0.2076	85.74	86.17	76.03	- 0.50	+ 12.77
22 Pulse Moong	0.2510	111.26	111.78	74.90	- 0.47	+ 48.54
23 Pulse Mash	0.1465	76.26	77.98	60.47	- 2.21	+ 26.11
24 Pulse Gram	0.2751	108.08	106.71	97.32	+ 1.28	+ 11.06
25 Gram Whole	0.1116	116.23	116.01	118.90	+ 0.19	- 2.25
26 Beans	0.0896	122.98	120.87	113.70	+ 1.75	+ 8.16
27 Potatoes	0.7437	167.49	168.07	124.92	- 0.35	+ 34.08
28 Onions	0.8965	165.39	149.31	81.75	+ 10.77	+ <u>102.3</u>
						<u>1</u>
29 Tomatoes	0.5069	110.39	118.96	135.24	- 7.20	- 18.37
30 Fresh Vegetables	2.0947	142.94	122.92	119.03	+ 16.29	+ 20.09
31 Sugar	2.0296	122.14	122.67	88.35	- 0.43	+ 38.25
32 Gur	0.1522	132.68	129.03	95.92	+ 2.83	+ 38.32
33 Honey	0.0296	119.02	118.92	112.75	+ 0.08	+ 5.56
34 Sweetmeat	0.3967	121.23	120.71	110.16	+ 0.43	+ 10.05
35 Ice Cream	0.0568	119.16	119.16	109.12	+ 0.00	+ 9.20
36 Condiments and Spices	1.4919	124.22	124.73	109.30	- 0.41	+ 13.65
37 Dessert Preparation	0.0133	111.15	110.93	104.81	+ 0.20	+ 6.05
38 Tea	1.2566	134.36	126.28	116.59	+ 6.40	+ 15.24
39 Beverages	0.5537	121.73	121.03	107.57	+ 0.58	+ 13.16
<b>Alcoholic Beverages, Tobacco</b>	<b>1.2786</b>	<b>126.72</b>	<b>125.83</b>	<b>96.42</b>	<b>+ 0.71</b>	<b>+ 31.43</b>
40 Cigarettes	1.2364	126.02	125.14	94.89	+ 0.70	+ 32.81
41 Pan Prepared	0.0422	147.22	146.13	141.17	+ 0.75	+ 4.29
<b>Clothing and footwear</b>	<b>9.4826</b>	<b>128.76</b>	<b>128.27</b>	<b>118.23</b>	<b>+ 0.38</b>	<b>+ 8.91</b>
42 Cotton Cloth	2.8381	137.02	136.44	123.90	+ 0.43	+ 10.59
43 Woolen Cloth	1.0959	121.43	121.01	112.44	+ 0.35	+ 8.00
44 Readymade Garments	1.1345	126.80	126.70	114.39	+ 0.08	+ 10.85
45 Woolen Readymade Garments	0.5401	119.69	119.69	117.46	+ 0.00	+ 1.90
46 Tailoring	1.2999	131.38	130.79	124.11	+ 0.45	+ 5.86
47 Hosiry	0.4322	141.28	138.04	122.47	+ 2.35	+ 15.36
48 Dopatta	0.2078	121.32	121.30	112.07	+ 0.02	+ 8.25
49 Cleaning and Laundering	0.0176	118.36	117.70	112.35	+ 0.56	+ 5.35
50 Footware	1.9165	120.72	120.62	111.40	+ 0.08	+ 8.37
<b>Housing, water, Elec., Gas an</b>	<b>18.4853</b>	<b>120.06</b>	<b>120.36</b>	<b>116.80</b>	<b>- 0.25</b>	<b>+ 2.79</b>
51 House Rent	8.6110	125.99	125.99	119.41	+ 0.00	+ 5.51
52 Construction Input Items	0.6306	114.30	114.41	109.63	- 0.10	+ 4.26
53 Construction Wage Rates	0.2526	140.49	139.75	127.31	+ 0.53	+ 10.35
54 Water Supply	0.0645	154.00	154.00	121.10	+ 0.00	+ 27.17
55 Garbage Collection	0.0080	132.21	132.05	130.71	+ 0.12	+ 1.15
56 Electricity Charges	3.4431	107.18	108.25	108.47	- 0.99	- 1.19



**Annexure B:CPI (Rural) Index Numbers by Commodity Groups & Commodities (2015-16=100)**

	Item and Specification	Weight	Index Numbers			% Change in Sep 2019 over			
			Sep 19	Aug 19	Sep 18	Aug 2019	Sep 2018		
57	Liquified Hydrocarbons	0.9994	122.78	125.18	142.88	-	1.92	-	14.07
58	Solid Fuel	4.4761	117.10	116.98	112.70	+	0.10	+	3.90
	<b>Furnishing and household equi</b>	<b>4.1031</b>	<b>121.91</b>	<b>120.77</b>	<b>110.28</b>	<b>+</b>	<b>0.94</b>	<b>+</b>	<b>10.55</b>
59	Furniture and Furnishing	0.5786	122.70	121.54	112.74	+	0.95	+	8.83
60	Household Textiles	0.4382	119.42	118.96	111.61	+	0.39	+	7.00
61	Household Equipments	1.2774	129.23	127.48	114.89	+	1.37	+	12.48
62	Plastic Products	0.0776	132.36	129.62	119.37	+	2.11	+	10.88
63	Major Tools and Equipments	0.0324	113.51	113.51	111.10	+	0.00	+	2.17
64	Washing Soaps, Detergents and	1.6989	116.46	115.65	105.19	+	0.70	+	10.71
	<b>Health</b>	<b>3.5141</b>	<b>132.33</b>	<b>131.74</b>	<b>117.89</b>	<b>+</b>	<b>0.45</b>	<b>+</b>	<b>12.25</b>
65	Drugs and Medicines	1.5792	133.08	132.64	116.11	+	0.33	+	14.62
66	Doctor Clinic Fee	0.5128	147.94	145.20	126.34	+	1.89	+	17.10
67	Dental Services	0.0181	112.95	112.95	108.60	+	0.00	+	4.01
68	Medical Tests	0.3967	133.92	133.92	118.33	+	0.00	+	13.18
69	Hospitals Services	1.0073	122.95	122.95	116.38	+	0.00	+	5.65
	<b>Transport</b>	<b>5.5580</b>	<b>139.97</b>	<b>142.48</b>	<b>120.28</b>	<b>-</b>	<b>1.76</b>	<b>+</b>	<b>16.37</b>
70	Motor Vehicles	0.7305	126.34	125.73	107.47	+	0.49	+	17.56
71	Motor Vehicles Accessories	0.1572	128.77	127.92	107.93	+	0.66	+	19.31
72	Motor Fuels	2.4932	156.23	162.00	128.62	-	3.56	+	21.47
73	Mechanical Services	0.3645	146.72	146.72	139.34	+	0.00	+	5.30
74	Motor Vehicle Tax	0.0174	127.98	127.98	108.58	+	0.00	+	17.87
75	Transport Services	1.7952	122.66	122.74	111.24	-	0.07	+	10.27
	<b>Communication</b>	<b>1.9940</b>	<b>104.60</b>	<b>104.60</b>	<b>102.50</b>	<b>+</b>	<b>0.00</b>	<b>+</b>	<b>2.05</b>
76	Postal Services	0.0070	149.43	149.43	113.57	+	0.00	+	31.58
77	Communication Apparatus	0.3362	118.27	118.27	112.24	+	0.00	+	5.37
78	Communication Services	1.6508	101.63	101.63	100.47	+	0.00	+	1.15
	<b>Recreation and culture</b>	<b>1.3764</b>	<b>119.71</b>	<b>119.33</b>	<b>110.83</b>	<b>+</b>	<b>0.32</b>	<b>+</b>	<b>8.01</b>
79	Recreation and Culture	0.4763	122.19	121.67	112.37	+	0.43	+	8.74
80	Text Books	0.5047	110.12	109.63	102.04	+	0.45	+	7.92
81	Newspapers	0.0230	161.68	161.68	121.26	+	0.00	+	33.33
82	Stationery	0.3724	126.95	126.88	120.12	+	0.06	+	5.69
	<b>Education</b>	<b>2.1342</b>	<b>132.50</b>	<b>132.50</b>	<b>125.80</b>	<b>+</b>	<b>0.00</b>	<b>+</b>	<b>5.33</b>
83	Education	2.1342	132.50	132.50	125.80	+	0.00	+	5.33
	<b>Restaurants and hotels</b>	<b>6.1895</b>	<b>127.06</b>	<b>126.91</b>	<b>117.51</b>	<b>+</b>	<b>0.12</b>	<b>+</b>	<b>8.13</b>
84	Readymade Food	3.8001	128.65	128.40	119.31	+	0.19	+	7.83
85	Marriage Hall Charges	2.2525	125.92	125.92	115.44	+	0.00	+	9.08
86	Accommodation Services	0.1369	101.59	101.59	101.59	+	0.00	+	0.00
	<b>Misc. goods and services</b>	<b>5.0174</b>	<b>129.24</b>	<b>128.13</b>	<b>113.46</b>	<b>+</b>	<b>0.87</b>	<b>+</b>	<b>13.91</b>
87	Personal Grooming Services	1.5363	130.04	129.57	117.72	+	0.36	+	10.47
88	Appliances/Articles/Products	2.2746	115.28	114.47	107.55	+	0.71	+	7.19
89	Personal Effects n.e.c.	1.2065	154.52	152.07	119.17	+	1.61	+	29.66

## Annexure C: Wholesale Price Indices by Major Groups &amp; Commodities

(2015-16=100)

Item and Specification	Weight	Index Numbers			% Change in Sep 2019 over			
		Sep 19	Aug 19	Sep 18	Aug 2019	Sep 2018		
<b>General</b>	<b>100.0000</b>	<b>140.49</b>	<b>140.39</b>	<b>121.22</b>	<b>+</b>	<b>0.07</b>	<b>+</b>	<b>15.90</b>
<b>Agriculture Forestry &amp; Fisher</b>	<b>25.7674</b>	<b>135.04</b>	<b>128.79</b>	<b>119.81</b>	<b>+</b>	<b>4.85</b>	<b>+</b>	<b>12.71</b>
001 Wheat	0.6297	108.40	106.16	98.77	+	2.11	+	9.75
002 Maize	0.6764	138.03	133.40	119.97	+	3.47	+	15.05
003 Rice	2.4413	143.31	140.90	125.91	+	1.71	+	13.82
004 Sorghum / Jowar	0.0214	169.55	158.56	102.46	+	6.93	+	<u>65.48</u>
005 Millet / Bajra	0.0374	133.92	143.96	141.22	-	6.97	-	5.17
006 Vegetables	1.2441	216.62	148.90	142.84	+	45.48	+	<u>51.65</u>
007 Fresh Fruits	1.5144	122.65	125.03	103.45	-	1.90	+	18.56
008 Dry Fruits	0.2478	123.84	123.86	119.86	-	0.02	+	3.32
009 Cotton Seeds	1.1511	121.38	119.21	96.01	+	1.82	+	26.42
010 Other Oil Seeds	0.0722	126.90	126.87	116.12	+	0.02	+	9.28
011 Edible Roots / Potatoes	0.2540	206.92	204.33	127.34	+	1.27	+	<u>62.49</u>
012 Stimulant & Spice Crops	0.1634	234.74	221.44	138.29	+	6.01	+	<u>69.74</u>
013 Pulses	0.4901	107.87	104.86	97.17	+	2.87	+	11.01
014 Sugar Crops	1.0725	112.02	112.02	88.02	+	0.00	+	27.27
015 Fibre Crops	5.3169	158.16	152.05	154.94	+	4.02	+	2.08
016 Unmanufactured Tobacco	0.0742	159.77	159.02	145.92	+	0.47	+	9.49
017 Poultry	0.5633	143.46	132.76	76.71	+	8.06	+	<u>87.02</u>
018 Raw Milk from Bovine Animals	7.0279	113.86	110.08	108.19	+	3.43	+	5.24
019 Eggs	0.5034	105.38	105.80	111.52	-	0.40	-	5.51
020 Raw Animal Materials / Wool	0.0351	105.11	105.16	100.70	-	0.05	+	4.38
021 Hides, Skins & Fur Skins, Raw	0.4834	30.34	34.78	44.02	-	12.77	-	31.08
022 Fuel Wood in Logs	0.0179	107.76	102.91	103.32	+	4.71	+	4.30
023 Fish Live Fresh or Chilled	1.7295	146.66	146.42	131.93	+	0.16	+	11.17
<b>Ores/Minerals, Elec., Gas &amp; W</b>	<b>12.0069</b>	<b>159.04</b>	<b>159.39</b>	<b>107.31</b>	<b>-</b>	<b>0.22</b>	<b>+</b>	<b>48.21</b>
024 Coal not Agglomerated	0.7508	82.17	82.17	82.17	+	0.00	+	0.00
025 Natural Gas Liquified	5.7065	195.99	195.96	104.86	+	0.02	+	<u>86.91</u>
026 Salt & Pure Sodium Chloride	0.0584	145.71	145.31	127.69	+	0.28	+	14.11
027 Electrical Energy	5.4912	131.29	132.10	113.08	-	0.61	+	16.10
<b>Food, Beverages, Tobacco, Textil</b>	<b>31.1122</b>	<b>127.57</b>	<b>127.21</b>	<b>114.73</b>	<b>+</b>	<b>0.28</b>	<b>+</b>	<b>11.19</b>
<b>Food Products, Beverages &amp;</b>	<b>20.0718</b>	<b>122.77</b>	<b>120.86</b>	<b>108.49</b>	<b>+</b>	<b>1.58</b>	<b>+</b>	<b>13.16</b>
028 Meat of Animals	3.4559	135.25	131.57	122.83	+	2.80	+	10.11
029 Vegetables & Fruit Juice	0.0058	112.64	112.28	118.14	+	0.32	-	4.66
030 Dried Fruits & Nuts	0.1733	149.34	149.83	135.52	-	0.33	+	10.20
031 Fruit Juices	0.3880	116.92	115.65	107.83	+	1.10	+	8.43
032 Vegetable Oils Refined	1.9242	117.91	116.01	105.31	+	1.64	+	11.96
033 Vegetable Ghee	1.5632	129.92	127.53	110.35	+	1.87	+	17.73
034 Oil Cakes	0.9611	127.16	128.36	112.74	-	0.93	+	12.79
035 Processed Liquid Milk	4.4437	121.85	121.40	113.16	+	0.37	+	7.68
036 Milk & Cream in Solid Form	0.0316	121.39	121.13	101.97	+	0.21	+	19.04
037 Ice Cream	0.0047	107.34	107.34	106.00	+	0.00	+	1.26
038 Dairy Products N.E.C	0.0117	126.19	125.82	110.35	+	0.29	+	14.35
039 Wheat Flour	2.3034	112.97	107.74	100.97	+	4.85	+	11.88
040 Other Cereal Flour	0.0604	110.30	108.72	98.80	+	1.45	+	11.64
041 Sugar Refined	1.7975	120.10	120.01	87.32	+	0.07	+	37.54
042 Chocolate	0.0139	81.57	81.57	101.37	+	0.00	-	19.53
043 Sugar Confectionary	0.0738	123.81	123.81	109.32	+	0.00	+	13.25
044 Coffee & Tea	0.7303	126.33	121.17	113.48	+	4.26	+	11.32
045 Spices	0.1449	140.54	139.71	110.09	+	0.59	+	27.66
046 Other Food Products	0.0336	109.25	109.25	105.39	+	0.00	+	3.66
047 Mineral Water	0.0207	118.32	117.94	111.82	+	0.32	+	5.81
048 Beverages	0.6303	123.96	122.73	115.69	+	1.00	+	7.15
049 Tobacco Products	1.2998	104.23	104.23	86.96	+	0.00	+	19.86
<b>Textiles &amp; Apparels</b>	<b>10.3289</b>	<b>138.10</b>	<b>140.72</b>	<b>127.62</b>	<b>-</b>	<b>1.86</b>	<b>+</b>	<b>8.21</b>
050 Cotton Yarn	5.2491	161.67	166.90	147.39	-	3.13	+	9.69
051 Nylon Yarn	0.1719	95.24	95.24	95.24	+	0.00	+	0.00
052 Blended Yarn	0.1689	122.06	122.49	114.39	-	0.35	+	6.71
053 Woven Fabrics	0.0128	123.42	123.42	116.48	+	0.00	+	5.96
054 Cotton Fabrics	0.6343	109.12	109.09	104.12	+	0.03	+	4.80
055 Other Fabrics	1.1016	112.30	112.30	107.19	+	0.00	+	4.77
056 Silk & Reyon Fabrics	0.7350	114.15	114.15	103.40	+	0.00	+	10.40

## Annexure C: Wholesale Price Indices by Major Groups &amp; Commodities

(2015-16=100)

Item and Specification	Weight	Index Numbers			% Change in Sep 2019 over	
		Sep 19	Aug 19	Sep 18	Aug 2019	Sep 2018
057 Towels	0.1235	106.41	109.39	108.48	- 2.72	- 1.91
058 Blankets	0.0029	95.81	95.81	95.14	+ 0.00	+ 0.70
059 Bed Sheets	0.0913	106.74	106.74	103.96	+ 0.00	+ 2.67
060 Quilts	0.0019	104.68	104.68	103.52	+ 0.00	+ 1.12
061 Woolen Carpets	0.0383	125.43	125.43	122.99	+ 0.00	+ 1.98
062 Synthetic Carpets	0.0566	105.96	105.96	101.85	+ 0.00	+ 4.04
063 Hosiery Products	0.8832	110.93	110.02	113.92	+ 0.83	- 2.62
064 Readymade Garments	1.0576	123.15	123.15	106.62	+ 0.00	+ 15.50
<b>Leather Products</b>	<b>0.7115</b>	<b>110.18</b>	<b>110.18</b>	<b>103.78</b>	<b>+ 0.00</b>	<b>+ 6.17</b>
065 Leather Without Hair	0.2973	105.65	105.65	96.94	+ 0.00	+ 8.98
066 Other Leather N.E.C	0.2567	106.90	106.90	99.25	+ 0.00	+ 7.71
067 Footwears	0.1575	124.07	124.07	124.07	+ 0.00	+ 0.00
<b>Other Transportable Goods</b>	<b>22.3979</b>	<b>159.38</b>	<b>166.83</b>	<b>142.23</b>	<b>- 4.47</b>	<b>+ 12.06</b>
068 Timber	0.0165	111.75	111.75	110.36	+ 0.00	+ 1.26
069 Printing Paper	0.4279	130.70	126.46	114.63	+ 3.35	+ 14.02
070 Hard Board	0.1579	146.50	146.50	146.50	+ 0.00	+ 0.00
071 Motor Spirit	1.6268	160.18	166.88	130.57	- 4.01	+ 22.68
072 Diesel Oil	5.4849	179.65	189.26	149.25	- 5.08	+ 20.37
073 Kerosine Oil	0.2151	195.27	203.65	163.76	- 4.11	+ 19.24
074 Furnace Oil	3.2664	254.70	294.09	252.16	- 13.39	+ 1.01
075 Mobil Oil	0.7114	120.04	120.04	108.11	+ 0.00	+ 11.04
076 Chemicals	1.7720	129.09	128.10	115.24	+ 0.77	+ 12.02
077 Dyeing Material	0.1539	136.76	136.76	103.21	+ 0.00	+ 32.51
078 Fertilizers	2.8657	106.14	101.63	84.77	+ 4.44	+ 25.21
079 Pesticides	0.2763	110.51	107.60	104.70	+ 2.70	+ 5.55
080 Insecticides	0.1276	112.34	112.34	107.50	+ 0.00	+ 4.50
081 Paints & Varnishes	0.1916	124.47	124.13	117.30	+ 0.27	+ 6.11
082 Medicines	1.1428	133.92	129.13	115.14	+ 3.71	+ 16.31
083 Soaps & Detergents	0.8168	109.62	109.02	105.22	+ 0.55	+ 4.18
084 Auto Tyres	0.2703	121.30	121.30	98.42	+ 0.00	+ 23.25
085 Plastic Products	0.4550	108.12	108.11	105.36	+ 0.01	+ 2.62
086 Glass sheets	0.2089	142.86	142.86	129.64	+ 0.00	+ 10.20
087 Other Glass Articles	0.1635	131.03	131.03	119.93	+ 0.00	+ 9.26
088 Ceramics & Sanitary Fixture	0.0244	123.82	123.16	112.41	+ 0.54	+ 10.15
089 Bricks, Blocks & Tiles	0.1566	119.29	119.27	106.03	+ 0.02	+ 12.51
090 Cement	1.8145	112.53	111.08	111.08	+ 1.31	+ 1.31
091 Bed Foam	0.0006	118.43	118.28	105.81	+ 0.13	+ 11.93
092 Matches	0.0505	1170.1	1144.3	1127.37	+ 2.25	+ 3.79
<b>Metal Product, Machinery &amp; Eq</b>	<b>8.7156</b>	<b>128.66</b>	<b>127.59</b>	<b>113.69</b>	<b>+ 0.84</b>	<b>+ 13.17</b>
093 Steel Bar & Sheets	1.4615	159.78	159.31	128.77	+ 0.30	+ 24.08
094 Pipe Fittings	0.0780	135.47	135.47	113.79	+ 0.00	+ 19.05
095 Steel Products	0.3879	133.18	132.93	118.40	+ 0.19	+ 12.48
096 Engines & Motors	0.0046	107.29	107.29	107.29	+ 0.00	+ 0.00
097 Vacuum Pumps	0.0155	107.56	107.56	107.56	+ 0.00	+ 0.00
098 Air Conditioners	0.0049	112.46	112.46	102.01	+ 0.00	+ 10.24
099 Cultivators	0.0551	87.11	87.11	87.11	+ 0.00	+ 0.00
100 Chuff Cutter	0.1293	102.86	102.86	102.86	+ 0.00	+ 0.00
101 Tractors	0.0028	109.22	109.22	104.36	+ 0.00	+ 4.66
102 Lathe Machines	0.0525	168.06	168.06	115.87	+ 0.00	+ 45.04
103 Concrete Mixture	0.0107	100.00	100.00	100.00	+ 0.00	+ 0.00
104 Fridge,WashM,SewM,Fans,Iron	1.1645	144.29	137.58	117.44	+ 4.88	+ 22.86
105 Electric Wires	0.0912	125.73	122.14	115.52	+ 2.94	+ 8.84
106 Lighting Equipments	1.4431	110.13	110.13	106.55	+ 0.00	+ 3.36
107 Radio & Television	0.1843	97.48	97.48	96.60	+ 0.00	+ 0.91
108 Motor Vehicles	0.0244	150.63	150.63	120.66	+ 0.00	+ 24.84
109 Motorcycles	0.2570	119.59	118.24	108.68	+ 1.14	+ 10.04
110 Bicycles	3.3483	120.58	120.58	110.47	+ 0.00	+ 9.15