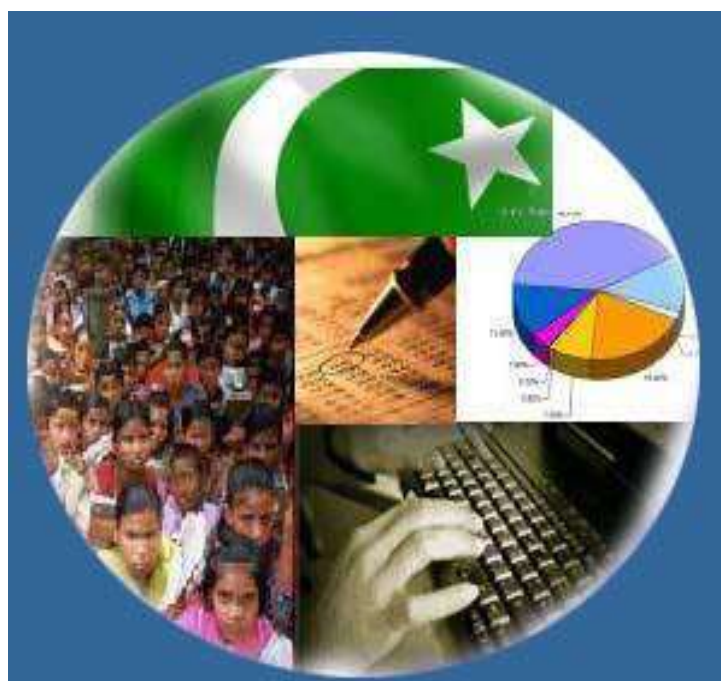




Monthly Review on Price Indices



October, 2021
(Base Year 2015-16)

Government of Pakistan
Ministry of Planning, Development & Special Initiatives
Pakistan Bureau of Statistics
Islamabad

Inflation in Brief

- CPI inflation General**, increased by 9.2% on year-on-year basis in October 2021 as compared to an increase of 9.0% in the previous month and 8.9% in October 2020. On month-on-month basis, it increased by 1.9% in October 2021 as compared to increase of 2.1% in the previous month and an increase of 1.7% in October 2020.
- CPI inflation Urban**, increased by 9.6% on year-on-year basis in October 2021 as compared to an increase of 9.1% in the previous month and 7.3% in October 2020. On month-on-month basis, it increased by 1.7% in October 2021 as compared to increase of 2.0% in the previous month and an increase of 1.3% in October 2020.
- CPI inflation Rural**, increased by 8.7% on year-on-year basis in October 2021 as compared to an increase of 8.8% in the previous month and 11.3% in October 2020. On month-on-month basis, it increased by 2.2% in October 2021 as compared to increase of 2.3% in the previous month and an increase of 2.4% in October 2020.
- SPI inflation** on YoY increased by 15.2% in October 2021 as compared to an increase of 16.6% a month earlier and an increase of 12.3% in October 2020. On MoM basis, it increased by 2.1% in October 2021 as compared to increase of 2.7% a month earlier and an increase of 3.0% in October 2020.
- WPI inflation** on YoY basis increased by 21.2% in October 2021 as compared to an increase of 19.6% a month earlier and an increase of 5.1% in October 2020. WPI inflation on MoM basis increased by 4.2% in October 2021 as compared to an increase of 3.2% a month earlier and an increase of 2.9% in corresponding month i.e. October 2020.
- Figures 1 and 2 show graphically the yearly data of Table 1.a for Urban and Rural CPI while Table 1.1 shows "Period Average" and "YoY" percent changes in indices of three years.

Table 1.a General Inflation (%) (Base 2015-16)																		
PERIOD	CPI														SPI**		WPI	
	General						Food				Non-Food							
	National		Urban		Rural		Urban		Rural		Urban		Rural		YoY	MoM	YoY	MoM
	YoY	MoM	YoY	MoM	YoY	MoM	YoY	MoM	YoY	MoM	YoY	MoM	YoY	MoM				
Jan-20	14.6	2.0	13.4	1.7	16.3	2.4	19.5	2.7	23.8	3.4	10.2	1.1	10.5	1.5	18.3	0.5	15.4	1.8
Feb-20	12.4	-1.0	11.2	-1.1	14.2	-1.0	15.2	-1.4	19.7	-1.6	9.1	-0.9	9.8	-0.4	14.5	-0.8	12.7	-0.7
Mar-20	10.2	0.0	9.3	0.1	11.7	-0.1	13.0	0.6	15.5	-0.3	7.3	-0.1	8.5	0.1	11.8	-0.3	9.3	-0.9
Apr-20	8.5	-0.8	7.7	-0.7	9.8	-1.1	10.4	-1.0	12.9	-1.7	6.2	-0.5	7.4	-0.5	9.3	-1.8	4.9	-2.0
May-20	8.2	0.3	7.3	0.3	9.7	0.3	10.6	1.5	13.7	1.4	5.4	-0.4	6.4	-0.5	11.0	2.2	1.5	-2.1
Jun-20	8.6	0.8	7.6	0.7	10.0	1.0	12.9	1.8	15.2	2.0	4.7	0.0	5.8	0.1	11.5	1.4	0.9	-0.3
Jul-20	9.3	2.5	7.8	2.2	11.6	3.0	15.1	3.0	17.8	4.0	3.9	1.7	6.5	2.2	13.7	3.0	3.2	5.4
Aug-20	8.2	0.6	7.1	0.8	9.9	0.4	11.3	-0.3	13.5	-0.9	4.8	1.5	6.8	1.5	11.7	0.9	3.3	1.3
Sep-20	9.0	1.5	7.7	1.3	11.1	2.0	12.4	3.0	15.8	3.8	5.0	0.2	7.2	0.3	12.0	2.1	4.3	1.0
Oct-20	8.9	1.7	7.3	1.3	11.3	2.4	13.9	2.8	17.7	4.3	3.6	0.3	5.8	0.5	12.3	3.0	5.1	2.9
Nov-20	8.3	0.8	7.0	0.6	10.5	1.1	13.0	1.6	16.1	2.0	3.4	0.1	5.5	0.2	9.9	1.1	5.0	-0.9
Dec-20	8.0	-0.7	7.0	-0.3	9.5	-1.2	12.6	-2.1	13.4	-3.4	3.8	0.7	6.1	1.0	9.1	-2.7	5.7	0.3
Jan-21	5.7	-0.2	5.0	-0.2	6.6	-0.3	7.3	-2.1	7.2	-2.2	3.7	1.1	6.1	1.5	7.7	-0.8	6.4	2.5
Feb-21	8.7	1.8	8.6	2.3	8.8	1.1	10.3	1.3	9.1	0.2	7.6	2.8	8.6	2.0	11.9	3.1	9.5	2.2
Mar-21	9.1	0.4	8.7	0.3	9.5	0.5	11.5	1.7	11.1	1.5	7.1	-0.6	8.1	-0.4	18.7	5.7	14.6	3.7
Apr-21	11.1	1.0	11.0	1.3	11.3	0.6	15.7	2.7	14.1	0.9	8.2	0.5	8.9	0.3	21.3	0.4	16.6	-0.4
May-21	10.9	0.1	10.8	0.2	10.9	-0.03	15.3	1.1	12.8	0.2	8.3	-0.3	9.2	-0.3	19.7	0.8	19.4	0.3
Jun-21	9.7	-0.3	9.6	-0.4	9.7	-0.1	11.0	-1.9	9.8	-0.8	8.8	0.5	9.7	0.6	17.6	-0.4	20.9	0.9
Jul-21	8.4	1.3	8.7	1.29	8.0	1.4	9.4	1.5	7.3	1.6	8.2	1.1	8.7	1.2	16.2	1.8	17.3	2.3
Aug-21	8.4	0.6	8.3	0.5	8.4	0.7	10.2	0.5	9.1	0.8	7.2	0.5	7.7	0.6	15.9	0.7	17.1	1.2
Sep-21	9.0	2.1	9.1	2.0	8.8	2.3	10.8	3.6	9.1	3.7	8.1	1.1	8.5	1.0	16.6	2.7	19.6	3.2
Oct-21	9.2	1.9	9.6	1.7	8.7	2.2	9.4	1.5	7.2	2.6	9.7	1.8	10.0	1.9	15.2	2.1	21.2	4.2

** SPI for quintile 1. Digits 0.0* are due to rounding off.

Core inflation (NFNE)

7. Measured by **non-food non-energy Urban** increased by 6.7% on (YoY) basis in October, 2021 as compared to an increase of 6.4% in the previous month and 5.6% in October, 2020. On (MoM) basis, it increased by 0.9% in October, 2021 as compared to increase of 0.4% in previous month, and an increase of 0.6% in corresponding month of last year i.e. October, 2020.
8. Measured by **non-food non-energy Rural** increased by 6.7% on (YoY) basis in October, 2021 as compared to an increase of 6.2% in the previous month and 7.6% in October, 2020. On (MoM) basis, it increased by 1.0% in October, 2021 as compared to an increase of 0.5% in previous month, and an increase of 0.6% in corresponding month of last year i.e. October, 2020.

Core inflation (Trimmed)

9. Measured by 20% **weighted trimmed mean Urban** increased by 8.7% on (YoY) basis in October, 2021 as compared to 8.7% in the previous month and 6.5% in October, 2020. On (MoM) basis, it increased by 1.1% in October, 2021 as compared to an increase of 0.9% in the previous month and an increase of 0.6% in corresponding month of last year i.e. October, 2020.
10. Measured by 20% **weighted trimmed mean Rural** increased by 8.2% on (YoY) basis in October, 2021 as compared to 8.2% in the previous month and by 9.5% in October, 2020. On (MoM) basis, it increased by 1.6% in October, 2021 as compared to an increase of 1.2% in the previous month and an increase of 1.1% in corresponding month of last year i.e. October, 2020.

Table 1.b Core Inflation (%) (Base 2015-16)

Period	NFNE				Trimmed			
	Urban		Rural		Urban		Rural	
	YoY	MoM	YoY	MoM	YoY	MoM	YoY	MoM
Oct-20	5.6	0.6	7.6	0.6	6.5	0.6	9.5	1.1
Nov-20	5.6	0.3	7.4	0.3	6.3	0.2	9.1	0.4
Dec-20	5.6	0.4	7.7	0.5	6.2	0.4	8.8	0.6
Jan-21	5.4	0.9	7.8	1.1	5.7	1.0	8.1	1.2
Feb-21	6.4	1.1	7.7	0.5	7.9	1.0	9.2	0.5
Mar-21	6.3	0.2	7.3	0.3	8.1	0.4	9.4	0.3
Apr-21	7.0	0.9	7.7	0.7	9.8	0.6	10.6	0.2
May-21	6.8	0.2	7.6	0.3	10.0	0.2	10.3	0.4
Jun-21	6.7	0.3	7.3	0.4	9.4	0.3	9.8	0.6
Jul-21	6.9	0.8	6.9	0.7	9.0	0.8	8.4	0.8
Aug-21	6.3	0.2	6.2	0.2	7.8	0.4	7.8	0.6
Sep-21	6.4	0.4	6.2	0.5	8.7	0.9	8.2	1.2
Oct-21	6.7	0.9	6.7	1.0	8.7	1.1	8.2	1.6

Table 1.1 Period Average and Y-o-Y % Change

INDEX	Average Jul - Oct % changes			Oct over Oct % changes		
	2021-2022	2020-2021	2019-2020	2021-2022	2020-2021	2019-2020
CPI (National)	8.74	8.87	10.32	9.19	8.91	11.04
CPI(Urban)	8.92	7.49	10.45	9.55	7.34	10.86
CPI(Rural)	8.46	10.97	10.14	8.66	11.31	11.33
SPI	15.99	12.53	12.70	15.25	12.74	15.11
WPI	18.84	3.98	14.11	21.18	5.13	13.27

Figure 1: Urban Inflation - YoY, Special Indices

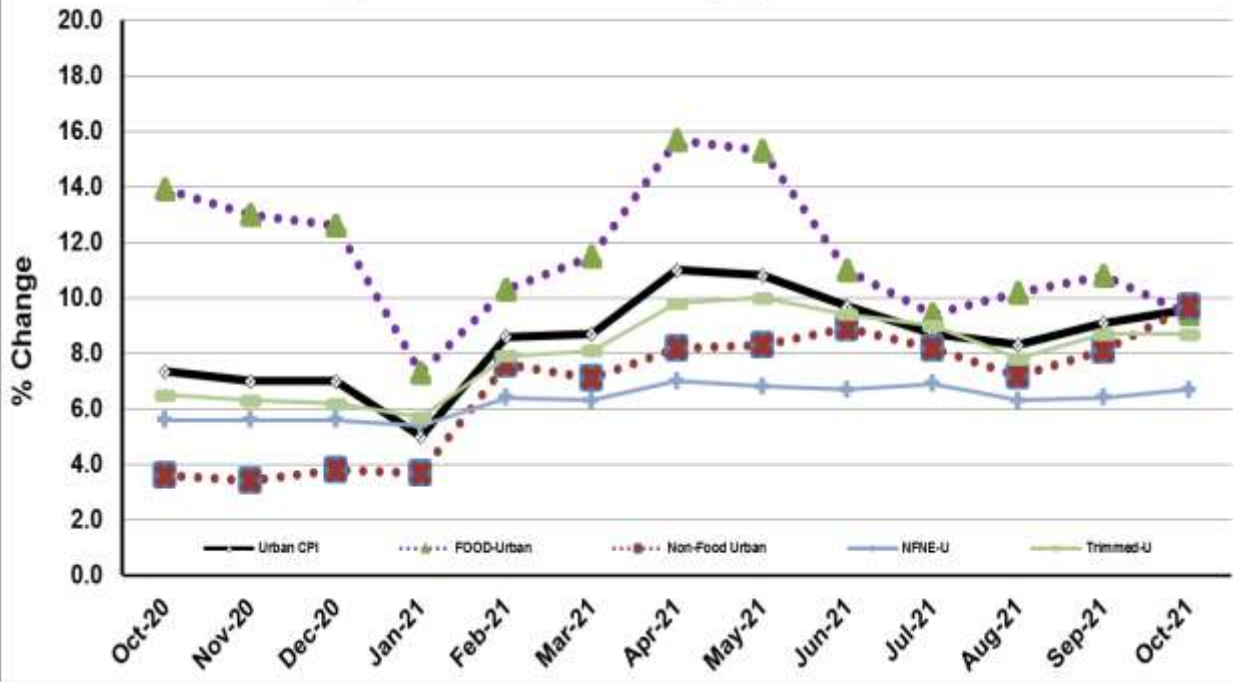
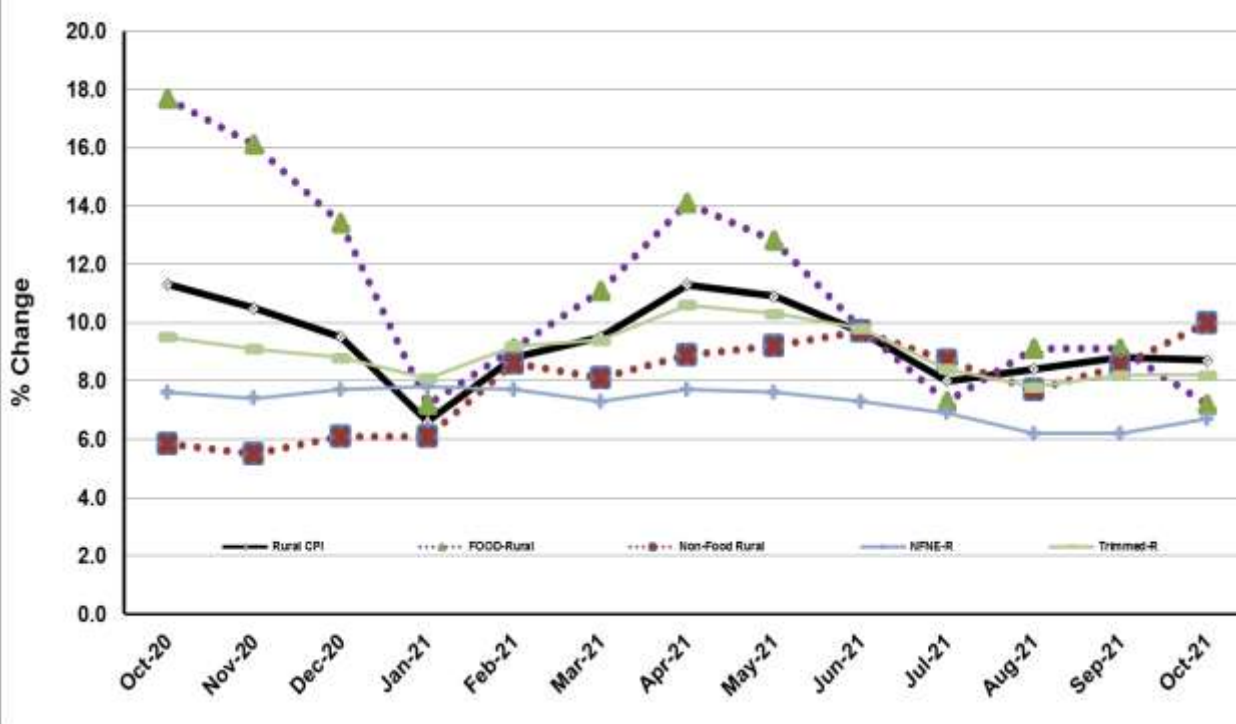


Figure 2: Rural Inflation - YoY, Special Indices



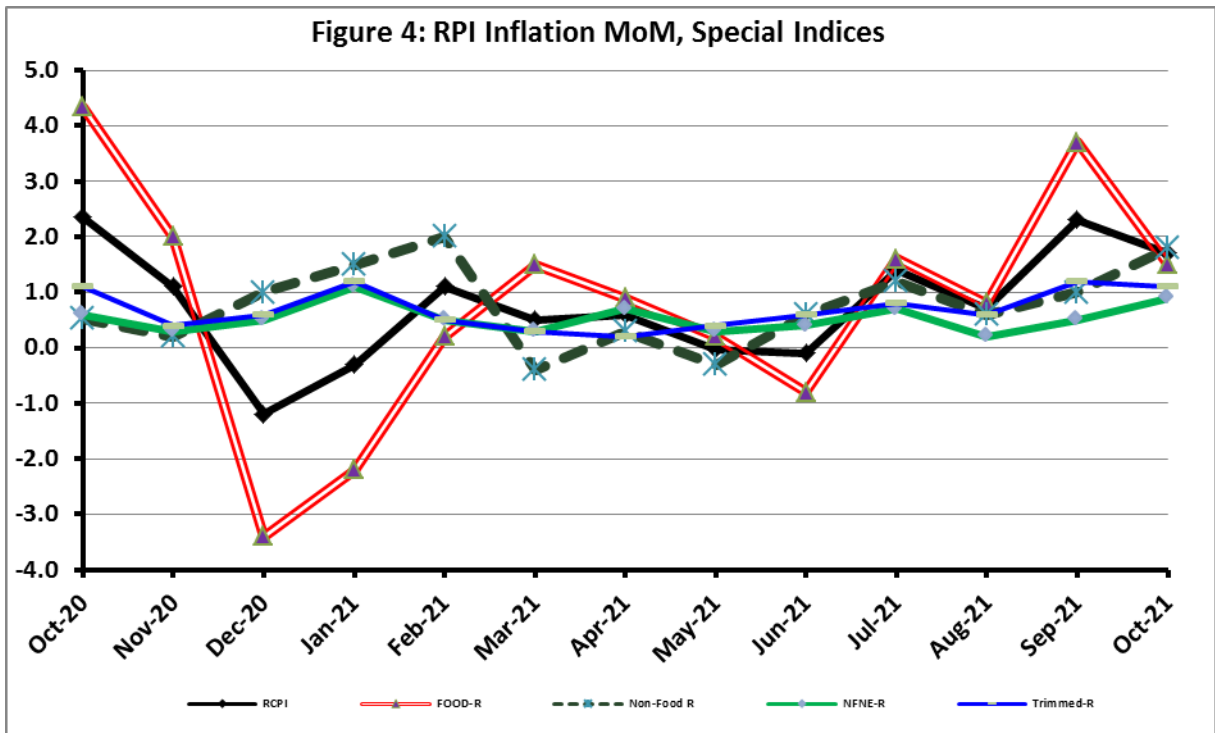
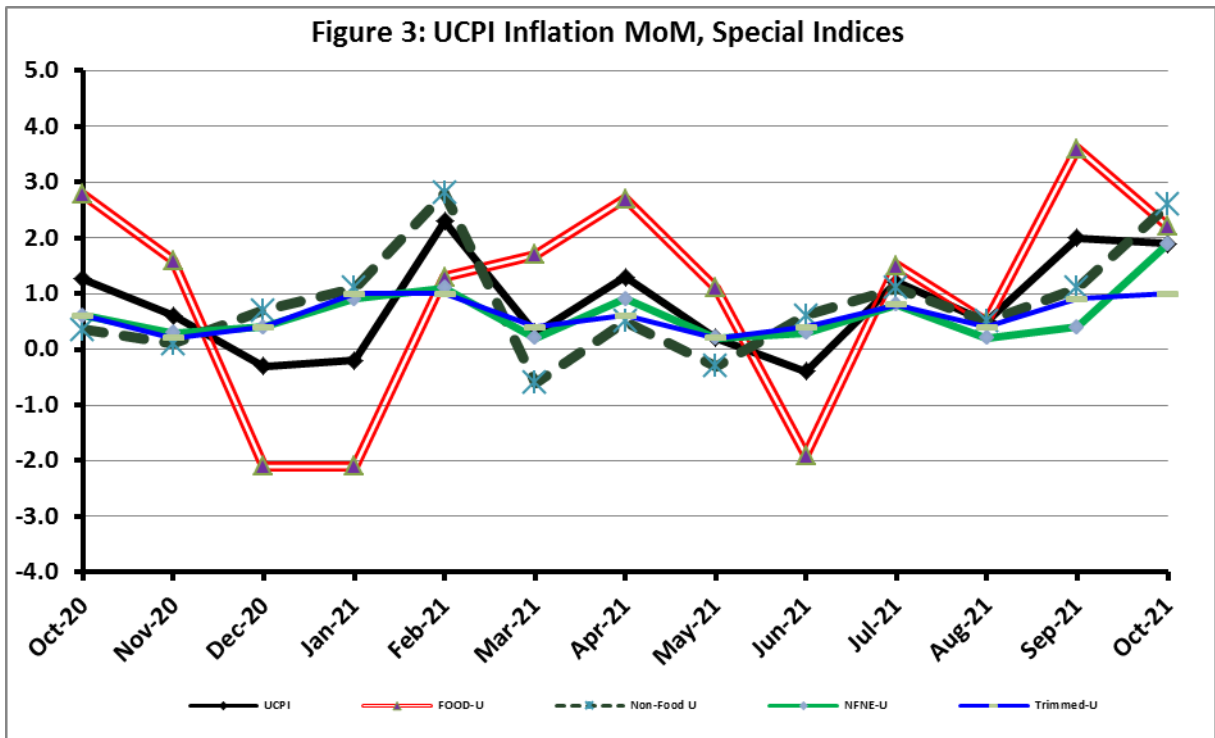


Figure 5: CPI Y.o.Y (National, Urban, Rural)

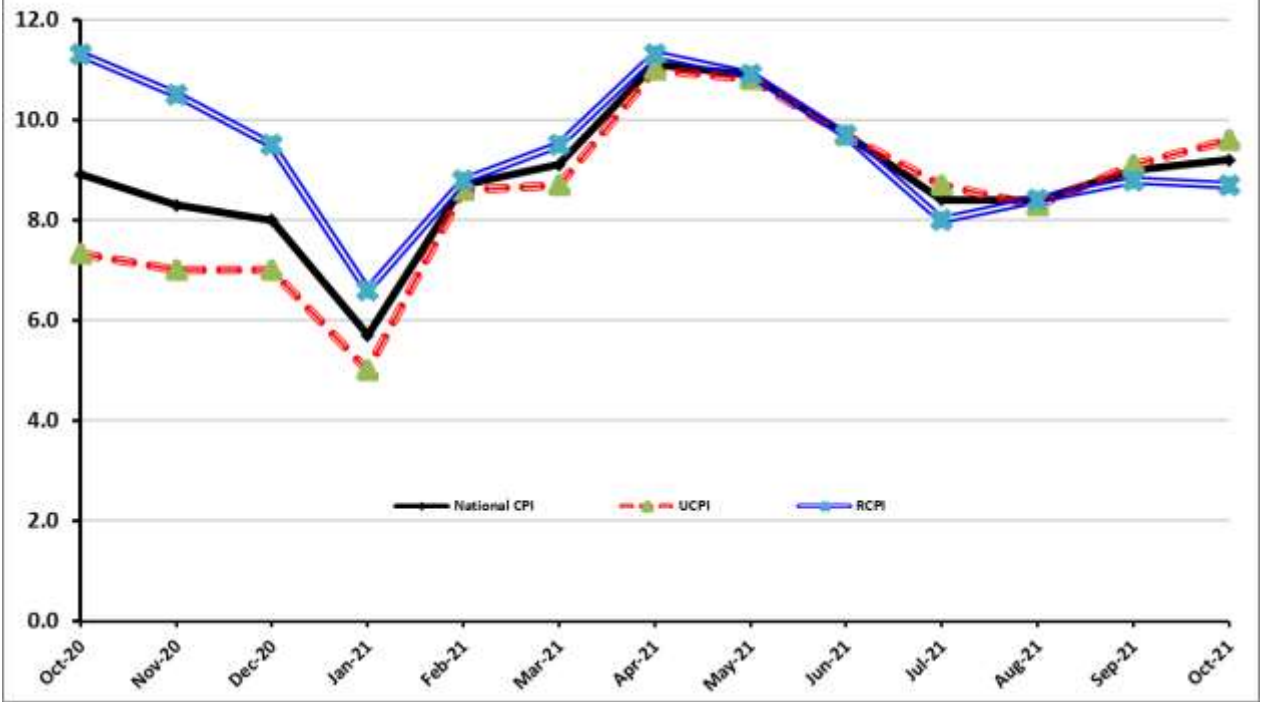
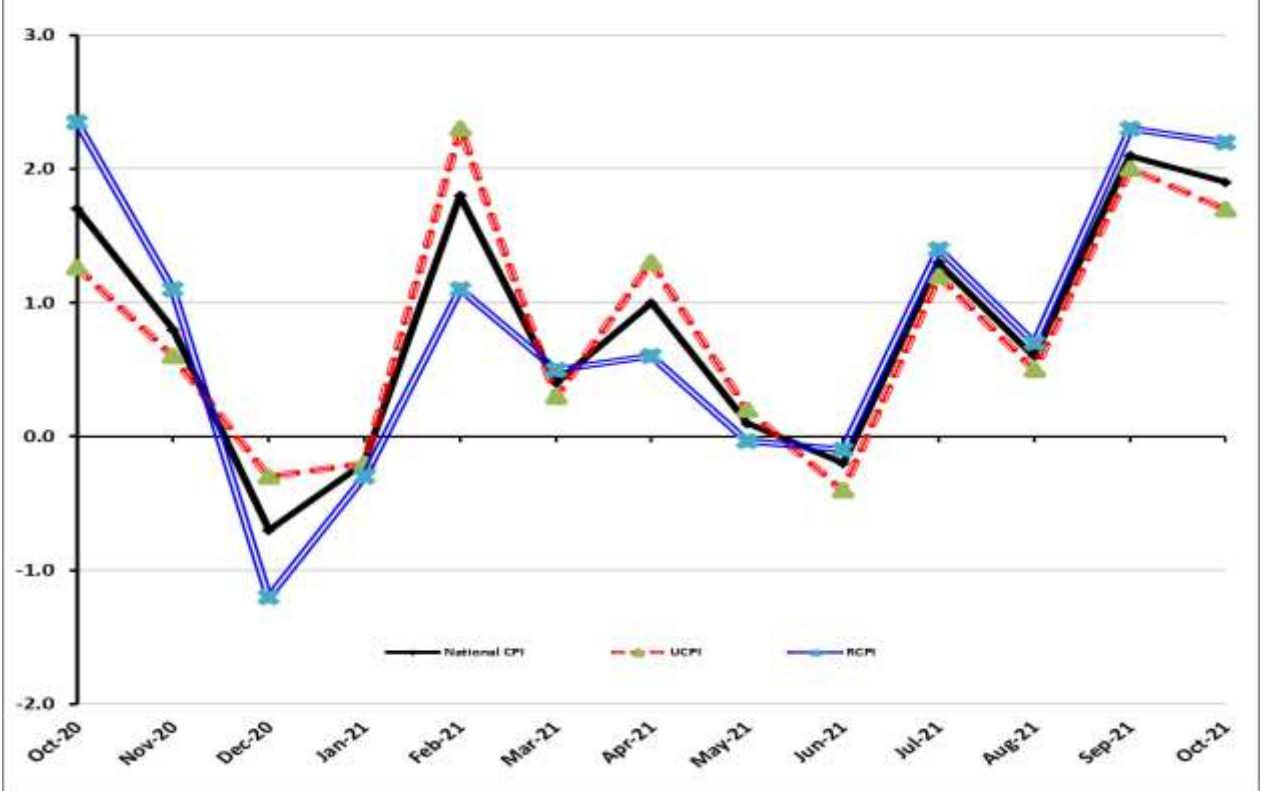


Figure 6: CPI M.o.M (National, Urban, Rural)



I. National Consumer Price Index (N-CPI)

The **National Consumer Price Index** for **October 2021** is **increased** by 1.90% over **September 2021** and increased by 9.19% over corresponding month of the last year i.e. **October 2020**.

Table 1: Consumer Price Index (National) by Group of Commodities and Services (Base 2015-16)									
No	Group	Group Weight (%)	Indices			% Change October 2021 Over		Impact (In % points) October 2021 Over	
			Oct 21	Sep 21	Oct 20	Sep 21	Oct 20	Sep 21	Oct 20
	General	100.00	153.60	150.74	140.67	1.90	9.19	1.90	9.19
1.	Food & Non-alcoholic Bev.	34.58	162.19	158.85	149.76	2.10	8.30	0.76	3.06
	<i>Non-perishable Food Items</i>	29.60	162.64	160.25	144.88	1.49	12.26	0.47	3.74
	<i>Perishable Food Items</i>	4.99	159.48	150.57	178.73	5.92	-10.77	0.29	-0.68
2.	Alcoholic Bev. & Tobacco	1.02	145.74	145.23	143.03	0.35	1.90	0.00	0.02
3.	Clothing & Footwear	8.60	150.89	150.16	138.08	0.49	9.28	0.04	0.78
4.	Housing, Water, Electricity, Gas & Fuels	23.63	148.81	145.34	132.92	2.39	11.96	0.54	2.67
5.	Furnishing & Household Equipment Maintenance	4.10	146.20	145.02	133.91	0.81	9.18	0.03	0.36
6.	Health	2.79	156.99	155.97	145.42	0.66	7.96	0.02	0.23
7.	Transport	5.91	159.97	151.96	139.82	5.27	14.41	0.31	0.85
8.	Communication	2.21	110.10	109.97	107.06	0.11	2.84	0.00	0.05
9.	Recreation & Culture	1.59	132.31	130.73	123.11	1.21	7.48	0.02	0.10
10.	Education	3.79	146.89	146.68	143.71	0.14	2.21	0.01	0.09
11.	Restaurants & Hotels	6.92	147.86	145.96	136.59	1.30	8.25	0.09	0.55
12.	Miscellaneous	4.87	158.96	156.86	146.22	1.34	8.71	0.07	0.44

II. Urban Consumer Price Index (UCPI)

The Urban Consumer Price Index of **October 2021** is increased by 1.66% over **September 2021** and increased by 9.55% over corresponding month of the last year i.e. **October 2020**.

Table 2: Consumer Price Index (Urban) by Group of Commodities and Services (Base 2015-16)

No	Group	Group Weight (%)	Indices			% Change October 2021 Over		Impact (In % points) October 2021 Over	
			Oct 21	Sep 21	Oct 20	Sep 21	Oct 20	Sep 21	Oct 20
	General	100.00	152.57	150.08	139.27	1.66	9.55	1.66	9.55
1.	Food & Non-alcoholic Bev.	30.42	161.03	158.53	147.23	1.58	9.37	0.51	3.01
	<i>Non-perishable Food Items</i>	25.97	161.69	160.03	142.81	1.04	13.22	0.29	3.52
	<i>Perishable Food Items</i>	4.46	157.18	149.79	173.00	4.93	-9.14	0.22	-0.51
2.	Alcoholic Bev.& Tobacco	0.85	154.56	154.23	151.34	0.21	2.13	0.00	0.02
3.	Clothing & Footwear	8.01	147.74	147.12	134.10	0.42	10.17	0.03	0.78
4.	Housing, Water, Electricity, Gas & Fuels	27.03	149.31	145.99	134.44	2.27	11.06	0.60	2.89
5.	Furnishing & Household Equip. & Maintenance	4.09	144.99	144.03	132.88	0.67	9.11	0.03	0.36
6.	Health	2.31	157.83	156.84	145.63	0.63	8.38	0.02	0.20
7.	Transport	6.14	161.70	153.57	140.58	5.29	15.02	0.33	0.93
8.	Communication	2.35	112.42	112.32	108.26	0.09	3.84	0.00	0.07
9.	Recreation & Culture	1.73	129.48	127.58	120.33	1.49	7.60	0.02	0.11
10.	Education	4.88	148.99	148.76	146.16	0.15	1.94	0.01	0.10
11.	Restaurants & Hotels	7.41	146.92	145.51	135.28	0.97	8.60	0.07	0.62
12.	Miscellaneous	4.77	157.79	156.29	144.40	0.96	9.27	0.05	0.46

Main contributors to month-on-month and year-on-year percentage changes are given below and detail is given in **Annexure-A**.

1. MONTH-ON-MONTH Top few commodities which varied from previous month are given below:

FOOD

Increased: Chicken (17.91%), Vegetables (15.26%), Potatoes (12.17%), Wheat (7.25%), Tea (4.93%), Mustard oil (4.68%), Vegetable ghee (2.72%), Gur (2.68%), Fish (2.22%), Cooking oil (1.77%), Meat (1.72%), Beans (1.50%) and Fruits (1.10%).

Decreased: Onions (12.70%), Sugar (7.72%), Pulse moong (6.14%), Eggs (5.94%), Condiments and Spices (3.85%), Pulse gram (2.30%), Pulse mash (2.12%) and Wheat flour (1.44%)

NON-FOOD

Increased: Liquefied Hydrocarbons (13.2%), Motor fuel (8.65%), stationery (5.78%), Electricity charges (5.48%), Motor vehicle accessories (2.76%) and Readymade garments (2.44%).

2. YEAR-ON-YEAR: Top few commodities which varied from corresponding month of previous year i.e. October, 2020 are given below:

FOOD

Increased: Vegetable ghee (43.03%), Mustard oil (41.92%), Cooking oil (40.02%), Chicken (34.69%), Pulse masoor (17.62%), Meat (17.11%), Fruits (15.84%), Wheat flour (12.97%), Gram whole (12.44%), Beans (12.26%) and Milk (9.45%)

Decreased: Tomatoes (48.52%), Pulse moong (29.12%), Onions (28.35%) and Potatoes (19.26%).

NON-FOOD

Increased: Liquefied Hydrocarbons (71.03%), Electricity charges (Combine) (32.14%), Motor fuel (27.6%), Footwear (16.12%), Washing soap/detergents (12.45%), Motor vehicle accessories (11.98%), Woollen readymade garments (11.86%) and Plastic products (10.30%).

III. Rural Consumer Price Index (RCPI)

The Rural Consumer Price Index of October 2021 is increased by 2.25% over September 2021 and increased by 8.66% over corresponding month of the last year i.e. October 2020.

Table 3: Consumer Price Index (Rural) by Group of Commodities and Services (Base 2015-16)

No	Group	Group Weight (%)	Indices			% Change October 2021 Over		Impact (In % points) October 2021 Over	
			Oct 21	Sep 21	Oct 20	Sep 21	Oct 20	Sep 21	Oct 20
	General	100.00	155.15	151.74	142.79	2.25	8.66	2.25	8.66
1.	Food & Non-alcoholic Bev.	40.87	163.49	159.22	152.60	2.68	7.14	1.15	3.11
	<i>Non-perishable Food Items</i>	35.08	163.70	160.49	147.20	2.00	11.21	0.74	4.06
	<i>Perishable Food Items</i>	5.79	162.15	151.47	185.38	7.05	-12.53	0.41	-0.94
2.	Alcoholic Bev. & Tobacco	1.28	136.85	136.16	134.65	0.51	1.63	0.01	0.02
3.	Clothing & Footwear	9.48	154.90	154.03	143.15	0.56	8.21	0.05	0.78
4.	Housing, Water, Electricity, Gas & Fuels	18.49	147.72	143.90	129.57	2.65	14.01	0.46	2.35
5.	Furnishing & Household Equip. & Maintenance	4.10	148.01	146.50	135.45	1.03	9.27	0.04	0.36
6.	Health	3.51	156.16	155.10	145.21	0.68	7.54	0.02	0.27
7.	Transport	5.56	157.09	149.28	138.56	5.23	13.37	0.29	0.72
8.	Communication	1.99	105.96	105.80	104.91	0.15	1.00	0.00	0.01
9.	Recreation & Culture	1.38	137.69	136.71	128.38	0.72	7.25	0.01	0.09
10.	Education	2.13	139.62	139.52	135.26	0.07	3.22	0.00	0.07
11.	Restaurants & Hotels	6.19	149.55	146.78	138.95	1.89	7.63	0.11	0.46
12.	Miscellaneous	5.02	160.64	157.69	148.83	1.87	7.94	0.10	0.42

Main contributors to Month-on-Month and Year-on-Year percentage changes are given below and detail is given in **Annexure-B**.

1. **MONTH-ON-MONTH** Top few commodities which varied from previous month are given below:

FOOD

Increased: Vegetables (25.09%), Chicken (13.72%), Potatoes (9.08%), Mustard oil (8.11%), Wheat (5.16%), Honey (4.93%), Tea (3.50%), Fish (3.14%), Cooking oil (2.60%), Pulse Mash (2.26%), Vegetable ghee (2.20%), Milk (1.8%) and Gram Whole (1.25%).

Decreased: Onions (14.76%), Tomatoes (10.24%), Condiments and Spices (3.70%), Sugar (2.59%), Pulse Moong (1.91%), Pulse Masoor (1.34%), Fruits (1.30%) and Eggs (1.07%).

NON-FOOD

Increased: Liquefied Hydrocarbons (11.79%), Motor Fuels (8.99%), Electricity Charges (combine) (5.48%), Cleaning & Laundering (4.34%), Hosiery (2.2%), Construction Input Items (2.16%), Motor Vehicles Accessories (1.87%), Furniture & Furnishing (1.26%), Readymade Garments (1.24%) and Washing Soaps/Detergents (1.22%).

2. **YEAR-ON-YEAR:** Top few commodities which varied from corresponding month of previous year i.e. October 2020 are given below:

FOOD

Increased: Cooking oil (46.56%), Mustard oil (44.86%), Vegetable ghee (43.37%), Chicken (37.93%), Gram Whole (18.23%), Meat (16.33%), Pulse Masoor (16.30%), Wheat Flour (13.06%), Honey (12.12%), Butter (11.49%) and Milk (8.59%).

Decreased: Tomatoes (54.61%), Onions (28.79%), Pulse Moong (27.04%), Potatoes (18.15%) and Condiments and Spices (14.09%).

NON-FOOD

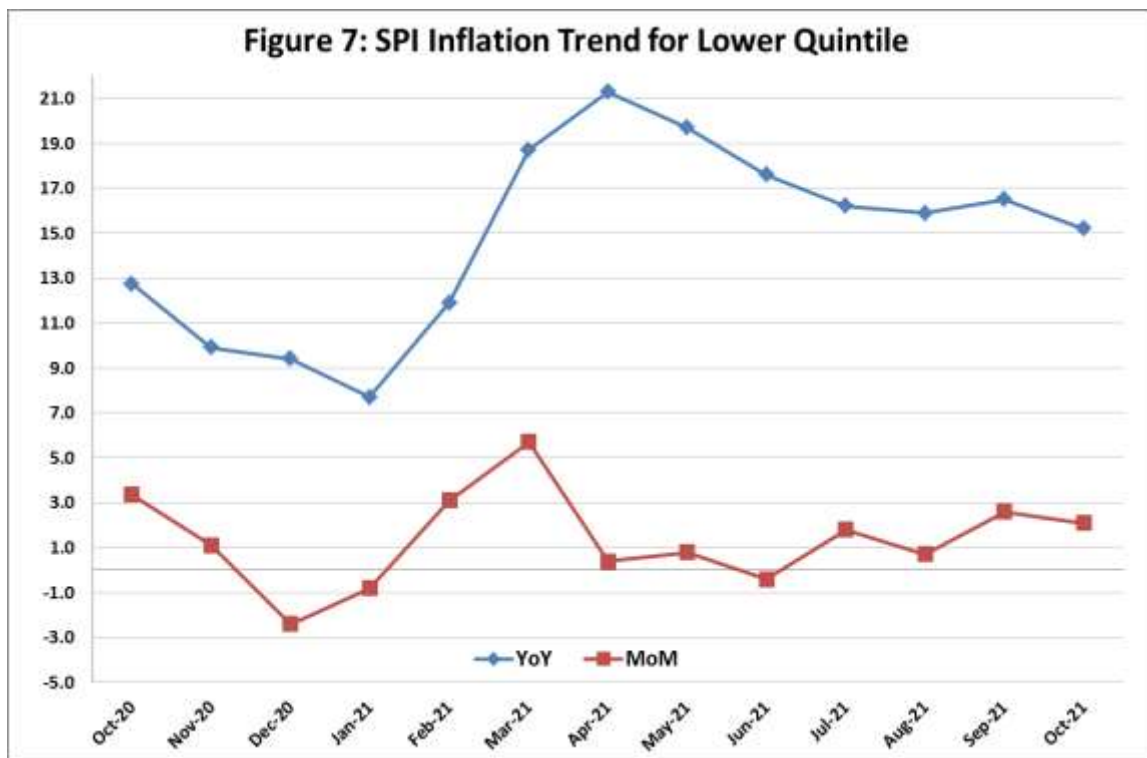
Increased: Liquefied Hydrocarbons (54.75%), Electricity Charges (combine) (32.14%), Motor Fuels (26.3%), Hosiery (13.56%), Construction Input Items (11.18%), Washing Soaps/Detergents (11.02%), Woolen Cloth (10.64%), Woolen Readymade Garments (10.01%), Tailoring (9.58%), Household equipment (9.44%) and Motor Vehicles Accessories (8.14%).

IV. Sensitive Price Indicator

Quintile-wise percentage changes YoY and MoM are given below in Table 4. The series from October 2020 to October 2021 is also graphed below in Figure 7.

Table 4: Sensitive Price Indicator (Base 2015-16)					
Quintiles	Indices			% Change October 2021 Over	
	October, 2021	September, 2021	October, 2020	September, 2021	October, 2020
1	171.42	167.83	148.74	2.14	15.25
2	161.38	157.28	143.17	2.61	12.72
3	162.29	158.26	144.29	2.55	12.47
4	158.43	154.35	140.55	2.64	12.72
5	161.09	155.83	140.98	3.38	14.26
Combined	160.68	155.94	140.94	3.04	14.01

Table 4.1 : Weekly Percentage Change of SPI During October - 2021				
Quintiles	% Change with Previous week			
	07-10-2021	14-10-2021	21-10-2021	28-10-2021
Quintile 1	0.88	0.15	0.96	1.29
Combined	1.21	0.2	1.38	1.23



V. Wholesale Price Index

The Wholesale Price Index for October, 2021 increased by 4.24% over September, 2021. It increased by 21.18% over the corresponding month of the last year i.e. October, 2020. YoY and MoM movements, from October, 2020 to October, 2021 are also graphed below in Figure 8.

Table 5: Wholesale Price Index by Group of Commodities (Base 2015-16)

No	Group	Group Weight (%)	Indices			% Change October 2021 Over		Impact (In % points) October 2021 Over	
			Oct 21	Sep 21	Oct 20	Sep 21	Oct 20	Sep 21	Oct 20
	General	100.00	182.62	175.20	150.70	4.24	21.18	4.24	21.18
1	Agriculture Forestry & Fishery	25.77	181.43	174.92	157.36	3.72	15.30	0.96	4.11
2	Ores/Minerals, Elec., Gas & Water	12.01	178.94	174.24	167.18	2.70	7.03	0.32	0.94
3	Food, Beverages, Tobacco, Textiles & Leather Products	31.11	172.92	169.86	145.35	1.80	18.97	0.54	5.69
	i. Food Products, Beverages & Tobacco	20.07	164.74	163.60	145.92	0.70	12.90	0.13	2.51
	ii. Textiles & Apparels	10.33	192.33	185.33	146.05	3.78	31.69	0.41	3.17
	iii. Leather Products	0.71	122.09	122.09	118.88	0.00	2.70	0.00	0.02
4	Other Transportable Goods	22.40	203.95	185.27	143.83	10.08	41.80	2.39	8.93
5	Metal Product, Machinery & Equipment	8.72	171.00	170.50	145.10	0.29	17.85	0.02	1.50

Main contributors to month-on-month and year-on-year percentage changes are given below and detail is given in **Annexure-C**.

1. MONTH-ON-MONTH: Top few commodities which varied from previous month are given below:

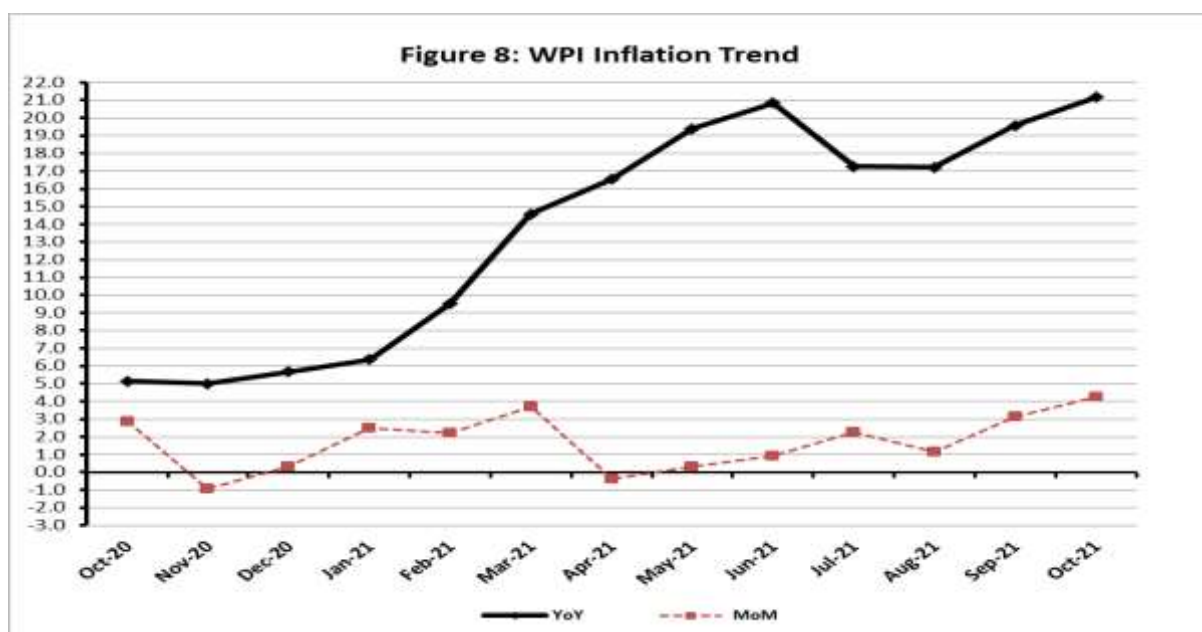
Increased: Vegetables (27.16%), Kerosene Oil (17.05%), Poultry (15.71%), Diesel (14.7%), Furnace Oil (14.61%), Bed Foam (12.99%), Potatoes (12.15%), Motor Spirit (10.04%), Oil Seeds (9.03%), Paints & Varnishes (8.90%), Wheat (8.42%), Fibre Crops (6.71%) and Maize (6.70%).

Decreased: Stimulant & Spice Crops (26.4%), Eggs (6.71%), Sugar (5.44%), Fruits (3.65%), Jowar (2.70%) and Spices (2.20%).

2. YEAR-ON-YEAR: Top few commodities which varied from previous year are given below:

Increased: Furnace Oil (92.92%), Bajra (83.09%), Oil Seeds (61.69%), Kerosene Oil (60.5%), Steel Bar & Sheets (51.2%), Fibre Crops (48.63%), Vegetable Ghee (47.48%), Diesel (46.11%), Vegetable Oils (37.59%), Spices (33.21%), Poultry (32.11%), Fertilizers (28.88%), Motor Spirit (28.50%), Chemicals (28.35%), Maize (25.06%), Woven Fabrics (17.05%) and Meat (14.16%).

Decreased: Stimulant & Spice Crops (33.63%), Potatoes (25.22%), Jowar (5.62%) and Vegetables (3.06%).



Annexure A:CPI (Urban) Index Numbers by Commodity Groups & Commodities (2015-16=100)

Item and Specification	Weight	Index Numbers			% Change in Oct 2021 over			
		Oct 21	Sep 21	Oct 20	Sep 2021	Oct 2020		
General	100.0000	152.57	150.08	139.27	+	1.66	+	9.55
Food and non-alcoholic Bevera	30.4215	161.03	158.53	147.23	+	1.58	+	9.37
01 Wheat	0.6120	177.61	165.61	169.68	+	7.25	+	4.67
02 Wheat flour	3.0075	159.97	162.31	141.61	-	1.44	+	12.97
03 Wheat products	0.0936	166.74	163.94	151.08	+	1.71	+	10.37
04 Besan	0.0830	126.87	127.17	122.27	-	0.24	+	3.76
05 Rice	1.1804	148.20	146.91	139.41	+	0.88	+	6.31
06 Bakery and confectionary	0.4770	151.61	149.97	138.87	+	1.09	+	9.17
07 Nimco	0.1224	154.23	150.40	133.68	+	2.55	+	15.37
08 Meat	2.0411	181.62	178.55	155.08	+	1.72	+	17.11
09 Chicken	1.3631	181.45	153.89	134.72	+	17.91	+	34.69
10 Fish	0.3855	115.85	113.33	112.33	+	2.22	+	3.13
11 Milk fresh	7.1070	146.11	145.52	133.50	+	0.41	+	9.45
12 Milk products	0.6407	149.94	149.61	136.98	+	0.22	+	9.46
13 Milk powder	0.3106	142.69	142.02	133.81	+	0.47	+	6.64
14 Eggs	0.5083	193.16	205.35	189.00	-	5.94	+	2.20
15 Butter	0.0932	196.85	195.79	173.48	+	0.54	+	13.47
16 Mustard oil	0.0120	185.93	177.61	131.01	+	4.68	+	41.92
17 Cooking oil	1.1016	200.69	197.19	143.33	+	1.77	+	40.02
18 Vegetable ghee	1.0324	212.91	207.28	148.86	+	2.72	+	43.03
19 Dry fruits	0.3299	138.34	137.28	131.56	+	0.77	+	5.15
20 Fresh fruits	1.4363	122.33	121.00	105.60	+	1.10	+	15.84
21 Pulse masoor	0.1624	123.40	123.41	104.91	-	0.01	+	17.62
22 Pulse moong	0.1697	106.90	113.89	150.82	-	6.14	-	29.12
23 Pulse mash	0.1152	106.92	109.24	103.56	-	2.12	+	3.24
24 Pulse gram	0.1660	123.74	126.65	120.29	-	2.30	+	2.87
25 Gram whohe	0.0912	138.63	136.93	123.29	+	1.24	+	12.44
26 Beans	0.0408	176.82	174.20	157.51	+	1.50	+	12.26
27 Potatoes	0.4496	220.82	200.66	273.51	+	10.05	-	19.26
28 Onions	0.5928	122.93	140.81	171.57	-	12.70	-	28.35
29 Tomatoes	0.3459	148.53	147.95	288.50	+	0.39	-	48.52
30 Fresh vegetables	1.5306	180.64	156.72	170.25	+	15.26	+	6.10
31 Sugar	1.1130	160.47	173.90	157.78	-	7.72	+	1.70
32 Gur	0.0379	160.48	156.29	147.74	+	2.68	+	8.62
33 Honey	0.1017	139.57	137.01	130.05	+	1.87	+	7.32
34 Sweetmeat	0.3535	165.20	157.45	147.36	+	4.92	+	12.11
35 Ice cream	0.1044	146.73	146.51	136.35	+	0.15	+	7.61
36 Condiments and Spices	1.3340	207.82	216.14	195.08	-	3.85	+	6.53
37 Dessert preparation	0.0419	133.28	133.27	126.53	+	0.01	+	5.33
38 Tea	0.8427	151.88	144.75	140.70	+	4.93	+	7.95
39 Beverages	0.8906	134.60	133.86	127.64	+	0.55	+	5.45
Alcoholic Beverages, Tobacco	0.8540	154.56	154.23	151.34	+	0.21	+	2.13
40 Cigarettes	0.7167	141.09	141.09	141.25	+	0.00	-	0.11
41 Pan prepared	0.1373	224.89	222.80	203.97	+	0.94	+	10.26
Clothing and footwear	8.0096	147.74	147.12	134.10	+	0.42	+	10.17
42 Cotton cloth	2.2227	150.63	150.57	137.17	+	0.04	+	9.81
43 Woolen cloth	0.8361	142.62	142.33	131.55	+	0.20	+	8.42
44 Readymade garments	1.3196	143.12	139.71	132.21	+	2.44	+	8.25
45 Woolen readymade garments	0.4307	142.27	142.21	127.19	+	0.04	+	11.86
46 Tailoring	1.0741	153.06	153.06	142.01	+	0.00	+	7.78
47 Hosiry	0.4070	145.30	145.10	132.36	+	0.14	+	9.78
48 Dopatta	0.1713	130.05	130.01	126.54	+	0.03	+	2.77
49 Cleaning and laundring	0.0665	148.80	148.68	142.34	+	0.08	+	4.54
50 Footware	1.4816	150.81	150.81	129.87	+	0.00	+	16.12
Housing, water, Elec., Gas an	27.0332	149.31	145.99	134.44	+	2.27	+	11.06
51 House rent	19.2558	142.06	140.07	133.24	+	1.42	+	6.62
52 Construcion input items	0.3765	160.32	159.30	147.35	+	0.64	+	8.80
53 Construction wage rates	0.2025	163.87	158.01	152.51	+	3.71	+	7.45
54 Water supply	0.5269	162.68	162.68	156.43	+	0.00	+	4.00
55 Garbage collection	0.1064	177.21	177.21	169.20	+	0.00	+	4.73
56 Electricity charges	4.5562	154.66	146.62	117.04	+	5.48	+	32.14
57 Gas charges	1.0807	216.94	216.94	216.94	+	0.00	+	0.00
58 Liquified Hydrocarbons	0.5064	222.30	196.38	129.98	+	13.20	+	71.03
59 Solid Fuel	0.4218	121.03	120.78	114.89	+	0.21	+	5.34

Annexure A:CPI (Urban) Index Numbers by Commodity Groups & Commodities (2015-16=100)

Item and Specification	Weight	Index Numbers			% Change in Oct 2021 over	
		Oct 21	Sep 21	Oct 20	Sep 2021	Oct 2020
<i>Furnishing and household equi</i>	4.0937	144.99	144.03	132.88	+ 0.67	+ 9.11
60 Furniture and furnishing	0.4750	145.12	144.91	134.87	+ 0.14	+ 7.60
61 Carpets	0.0308	113.97	113.92	112.53	+ 0.04	+ 1.28
62 Household textiles	0.3420	136.05	135.57	128.77	+ 0.35	+ 5.65
63 Household equipments	1.0032	148.64	147.60	133.08	+ 0.70	+ 11.69
64 Plastic products	0.0536	131.53	131.04	119.25	+ 0.37	+ 10.30
65 Major tools & equipments	0.0084	139.53	138.91	128.73	+ 0.45	+ 8.39
66 Washing soap/detergents/match	1.4112	150.11	148.76	133.49	+ 0.91	+ 12.45
67 Household servant	0.7695	136.95	136.10	133.89	+ 0.62	+ 2.29
<i>Health</i>	2.3098	157.83	156.84	145.63	+ 0.63	+ 8.38
68 Drugs and medicines	1.0735	158.13	156.28	143.18	+ 1.18	+ 10.44
69 Therapeutic Appliances and Eq	0.0054	116.90	116.78	114.67	+ 0.10	+ 1.94
70 Doctor (MBBS) clinic fee	0.4044	196.06	195.83	184.48	+ 0.12	+ 6.28
71 Dental services	0.0156	129.11	128.98	121.66	+ 0.10	+ 6.12
72 Medical tests	0.2367	135.39	134.86	130.41	+ 0.39	+ 3.82
73 Hospitals services	0.5742	140.75	140.61	130.09	+ 0.10	+ 8.19
<i>Transport</i>	6.1368	161.70	153.57	140.58	+ 5.29	+ 15.02
74 Motor vehicles	0.8097	154.29	152.69	149.33	+ 1.05	+ 3.32
75 Motor vehicle accessories	0.1941	149.72	145.70	133.70	+ 2.76	+ 11.98
76 Motor fuel	2.9088	186.71	171.84	146.32	+ 8.65	+ 27.60
77 Mechanical services	0.4290	140.01	139.13	133.42	+ 0.63	+ 4.94
78 Motor vehicle tax	0.0482	136.37	136.37	126.72	+ 0.00	+ 7.62
79 Transport services	1.7470	130.85	128.45	129.86	+ 1.87	+ 0.76
<i>Communication</i>	2.3536	112.42	112.32	108.26	+ 0.09	+ 3.84
80 Postal services	0.0190	163.41	163.41	147.39	+ 0.00	+ 10.87
81 Communication apparatus	0.4524	128.79	128.31	118.91	+ 0.37	+ 8.31
82 Communication Services	1.8822	107.97	107.97	105.30	+ 0.00	+ 2.54
<i>Recreation and culture</i>	1.7301	129.48	127.58	120.33	+ 1.49	+ 7.60
83 Recreation and culture	0.6478	115.38	115.18	111.67	+ 0.17	+ 3.32
84 Text books	0.6655	133.65	132.99	120.00	+ 0.50	+ 11.38
85 Newspapers	0.0716	151.55	151.55	151.55	+ 0.00	+ 0.00
86 stationery	0.3452	143.31	135.48	130.77	+ 5.78	+ 9.59
<i>Education</i>	4.8807	148.99	148.76	146.16	+ 0.15	+ 1.94
87 Education	4.8807	148.99	148.76	146.16	+ 0.15	+ 1.94
<i>Restaurants and hotels</i>	7.4050	146.92	145.51	135.28	+ 0.97	+ 8.60
88 Readymade food	5.5235	150.35	148.51	135.80	+ 1.24	+ 10.71
89 Marriage Hall Charges	1.7514	138.27	138.12	135.29	+ 0.11	+ 2.20
90 Accommodation Services	0.1301	117.75	117.69	113.20	+ 0.05	+ 4.02
<i>Misc. goods and services</i>	4.7720	157.79	156.29	144.40	+ 0.96	+ 9.27
91 Personal Grooming Services	0.8001	140.72	140.52	132.10	+ 0.14	+ 6.53
92 Electrical Appliances for Per	0.0465	120.10	119.80	118.37	+ 0.25	+ 1.46
93 Appliances/Articles/Products	2.9807	148.63	147.20	132.08	+ 0.97	+ 12.53
94 Personal Effects n.e.c.	0.9447	203.00	200.13	194.97	+ 1.43	+ 4.12

Annexure B:CPI (Rural) Index Numbers by Commodity Groups & Commodities (2015-16=100)

Item and Specification	Weight	Index Numbers			% Change in Oct 2021 over			
		Oct 21	Sep 21	Oct 20	Sep 2021	Oct 2020		
General	100.0000	155.15	151.74	142.79	+	2.25	+	8.66
Food and non-alcoholic Bevera	40.8668	163.49	159.22	152.60	+	2.68	+	7.14
01 Wheat	3.4736	173.08	164.58	168.16	+	5.16	+	2.93
02 Wheat Flour	3.4297	166.71	165.15	147.45	+	0.94	+	13.06
03 Wheat Products	0.1068	155.83	154.46	145.56	+	0.89	+	7.06
04 Besan	0.0728	132.54	132.42	124.33	+	0.09	+	6.60
05 Rice	1.5501	190.47	188.87	183.46	+	0.85	+	3.82
06 Bakery and Confectionary	0.3702	151.64	150.10	138.06	+	1.03	+	9.84
07 Nimco	0.0774	138.13	136.28	124.69	+	1.36	+	10.78
08 Meat	1.7146	179.49	178.86	154.29	+	0.35	+	16.33
09 Chicken	1.4641	189.01	166.21	137.03	+	13.72	+	37.93
10 Fish	0.2640	128.72	124.80	123.40	+	3.14	+	4.31
11 Milk fresh	10.3803	141.92	139.41	130.69	+	1.80	+	8.59
12 Milk products	0.9624	139.30	136.33	129.06	+	2.18	+	7.93
13 Milk powder	0.1062	131.13	131.13	126.38	+	0.00	+	3.76
14 Eggs	0.5665	189.95	192.00	180.95	-	1.07	+	4.97
15 Butter	0.3333	151.70	149.14	136.07	+	1.72	+	11.49
16 Mustard oil	0.0136	195.79	181.11	135.16	+	8.11	+	44.86
17 Cooking oil	0.6011	225.69	219.97	153.99	+	2.60	+	46.56
18 Vegetable ghee	2.3764	229.41	224.48	160.01	+	2.20	+	43.37
19 Dry fruits	0.2496	158.44	155.98	146.24	+	1.58	+	8.34
20 Fresh fruits	1.4505	116.53	118.06	107.47	-	1.30	+	8.43
21 Pulse Masoor	0.2076	130.66	132.43	112.35	-	1.34	+	16.30
22 Pulse Moong	0.2510	113.80	116.02	155.98	-	1.91	-	27.04
23 Pulse Mash	0.1465	109.15	106.74	105.29	+	2.26	+	3.67
24 Pulse Gram	0.2751	126.29	126.56	119.79	-	0.21	+	5.43
25 Gram Whole	0.1116	137.58	135.88	116.37	+	1.25	+	18.23
26 Beans	0.0896	174.30	173.05	166.09	+	0.72	+	4.94
27 Potatoes	0.7437	241.98	221.83	295.64	+	9.08	-	18.15
28 Onions	0.8965	118.93	139.53	167.01	-	14.76	-	28.79
29 Tomatoes	0.5069	129.90	144.72	286.16	-	10.24	-	<u>54.61</u>
30 Fresh Vegetables	2.0947	188.30	150.53	176.81	+	25.09	+	6.50
31 Sugar	2.0296	169.75	174.27	160.50	-	2.59	+	5.76
32 Gur	0.1522	162.71	158.80	150.48	+	2.46	+	8.13
33 Honey	0.0296	144.67	137.87	129.03	+	4.93	+	12.12
34 Sweetmeat	0.3967	144.81	142.59	132.36	+	1.56	+	9.41
35 Ice Cream	0.0568	142.84	142.84	133.02	+	0.00	+	7.38
36 Condiments and Spices	1.4919	165.30	171.66	192.40	-	3.70	-	14.09
37 Dessert Preparation	0.0133	132.71	132.71	123.63	+	0.00	+	7.34
38 Tea	1.2566	144.77	139.88	137.95	+	3.50	+	4.94
39 Beverages	0.5537	137.69	135.13	129.61	+	1.89	+	6.23
Alcoholic Beverages, Tobacco	1.2786	136.85	136.16	134.65	+	0.51	+	1.63
40 Cigarettes	1.2364	135.46	134.80	133.32	+	0.49	+	1.61
41 Pan Prepared	0.0422	177.75	176.12	173.46	+	0.93	+	2.47
Clothing and footwear	9.4826	154.90	154.03	143.15	+	0.56	+	8.21
42 Cotton Cloth	2.8381	170.47	170.16	157.78	+	0.18	+	8.04
43 Woolen Cloth	1.0959	147.13	145.91	132.98	+	0.84	+	10.64
44 Readymade Garments	1.1345	146.98	145.18	136.25	+	1.24	+	7.88
45 Woolen Readymade Garments	0.5401	143.31	143.31	130.27	+	0.00	+	10.01
46 Tailoring	1.2999	153.01	152.38	139.63	+	0.41	+	9.58
47 Hosiry	0.4322	191.48	187.35	168.61	+	2.20	+	13.56
48 Dopatta	0.2078	145.99	145.16	135.79	+	0.57	+	7.51
49 Cleaning and Laundering	0.0176	150.61	144.34	141.54	+	4.34	+	6.41
50 Footware	1.9165	138.27	137.71	132.46	+	0.41	+	4.39
Housing, water, Elec., Gas an	18.4853	147.72	143.90	129.57	+	2.65	+	14.01
51 House Rent	8.6110	142.07	140.21	133.23	+	1.33	+	6.64
52 Construction Input Items	0.6306	139.81	136.86	125.75	+	2.16	+	11.18
53 Construction Wage Rates	0.2526	163.23	162.02	153.47	+	0.75	+	6.36
54 Water Supply	0.0645	218.49	218.49	213.67	+	0.00	+	2.26
55 Garbage Collection	0.0080	154.75	154.75	142.31	+	0.00	+	8.74
56 Electricity Charges	3.4431	154.66	146.62	117.04	+	5.48	+	32.14
57 Liquified Hydrocarbons	0.9994	187.31	167.55	121.04	+	11.79	+	<u>54.75</u>
58 Solid Fuel	4.4761	143.60	142.50	132.02	+	0.77	+	8.77

Annexure B:CPI (Rural) Index Numbers by Commodity Groups & Commodities (2015-16=100)

Item and Specification	Weight	Index Numbers			% Change in Oct 2021 over			
		Oct 21	Sep 21	Oct 20	Sep 2021	Oct 2020		
<i>Furnishing and household equi</i>	4.1031	148.01	146.50	135.45	+	1.03	+	9.27
59 Furniture and Furnishing	0.5786	150.94	149.06	139.74	+	1.26	+	8.01
60 Household Textiles	0.4382	136.74	134.08	130.98	+	1.98	+	4.40
61 Household Equipments	1.2774	155.51	154.80	142.10	+	0.46	+	9.44
62 Plastic Products	0.0776	161.88	160.75	151.70	+	0.70	+	6.71
63 Major Tools and Equipments	0.0324	131.24	131.12	120.77	+	0.09	+	8.67
64 Washing Soaps, Detergents and	1.6989	143.96	142.22	129.67	+	1.22	+	11.02
<i>Health</i>	3.5141	156.16	155.10	145.21	+	0.68	+	7.54
65 Drugs and Medicines	1.5792	156.78	155.55	145.35	+	0.79	+	7.86
66 Doctor Clinic Fee	0.5128	193.43	192.18	174.25	+	0.65	+	11.01
67 Dental Services	0.0181	134.31	132.61	126.65	+	1.28	+	6.05
68 Medical Tests	0.3967	155.42	155.15	148.15	+	0.17	+	4.91
69 Hospitals Services	1.0073	136.91	135.90	129.38	+	0.74	+	5.82
<i>Transport</i>	5.5580	157.09	149.28	138.56	+	5.23	+	13.37
70 Motor Vehicles	0.7305	139.36	136.32	129.20	+	2.23	+	7.86
71 Motor Vehicles Accessories	0.1572	149.78	147.03	138.50	+	1.87	+	8.14
72 Motor Fuels	2.4932	183.14	168.03	145.00	+	8.99	+	26.30
73 Mechanical Services	0.3645	158.20	156.82	155.26	+	0.88	+	1.89
74 Motor Vehicle Tax	0.0174	120.86	120.86	127.98	+	0.00	-	5.56
75 Transport Services	1.7952	128.88	127.47	130.15	+	1.11	-	0.98
<i>Communication</i>	1.9940	105.96	105.80	104.91	+	0.15	+	1.00
76 Postal Services	0.0070	149.43	149.43	149.43	+	0.00	+	0.00
77 Communication Apparatus	0.3362	122.40	121.44	120.11	+	0.79	+	1.91
78 Communication Services	1.6508	102.42	102.42	101.63	+	0.00	+	0.78
<i>Recreation and culture</i>	1.3764	137.69	136.71	128.38	+	0.72	+	7.25
79 Recreation and Culture	0.4763	141.01	139.50	130.47	+	1.08	+	8.08
80 Text Books	0.5047	125.81	124.59	116.37	+	0.98	+	8.11
81 Newspapers	0.0230	165.56	165.56	165.56	+	0.00	+	0.00
82 Stationery	0.3724	147.80	147.80	139.68	+	0.00	+	5.81
<i>Education</i>	2.1342	139.62	139.52	135.26	+	0.07	+	3.22
83 Education	2.1342	139.62	139.52	135.26	+	0.07	+	3.22
<i>Restaurants and hotels</i>	6.1895	149.55	146.78	138.95	+	1.89	+	7.63
84 Readymade Food	3.8001	162.42	159.17	147.42	+	2.04	+	10.18
85 Marriage Hall Charges	2.2525	130.75	128.62	126.93	+	1.66	+	3.01
86 Accommodation Services	0.1369	101.62	101.62	101.62	+	0.00	+	0.00
<i>Misc. goods and services</i>	5.0174	160.64	157.69	148.83	+	1.87	+	7.94
87 Personal Grooming Services	1.5363	168.38	163.04	149.48	+	3.28	+	12.64
88 Appliances/Articles/Products	2.2746	137.61	136.55	126.45	+	0.78	+	8.83
89 Personal Effects n.e.c.	1.2065	194.21	190.74	190.20	+	1.82	+	2.11

Annexure C: Wholesale Price Indices by Major Groups & Commodities (2015-16=100)

Item and Specification	Weight	Index Numbers			% Change in Oct 2021 over		
		Oct 21	Sep 21	Oct 20	Sep 2021	Oct 2020	
General	100.0000	182.62	175.20	150.70	+	4.24	+ 21.18
Agriculture Forestry & Fisher	25.7674	181.43	174.92	157.36	+	3.72	+ 15.30
001 Wheat	0.6297	177.53	163.75	170.77	+	8.42	+ 3.96
002 Maize	0.6764	171.15	160.40	136.85	+	6.70	+ 25.06
003 Rice	2.4413	176.81	177.17	163.59	-	0.20	+ 8.08
004 Sorghum / Jowar	0.0214	200.66	206.23	212.60	-	2.70	- 5.62
005 Millet / Bajra	0.0374	251.38	249.21	137.30	+	0.87	+ <u>83.09</u>
006 Vegetables	1.2441	236.42	185.93	243.89	+	27.16	- 3.06
007 Fresh Fruits	1.5144	134.02	139.09	126.85	-	3.65	+ 5.65
008 Dry Fruits	0.2478	139.61	139.20	129.43	+	0.29	+ 7.87
009 Cotton Seeds	1.1511	143.86	140.74	138.85	+	2.22	+ 3.61
010 Other Oil Seeds	0.0722	234.26	214.86	144.88	+	9.03	+ <u>61.69</u>
011 Edible Roots / Potatoes	0.2540	272.37	242.87	364.21	+	12.15	- 25.22
012 Stimulant & Spice Crops	0.1634	222.02	301.64	334.51	-	26.40	- 33.63
013 Pulses	0.4901	135.03	134.32	120.84	+	0.53	+ 11.74
014 Sugar Crops	1.0725	139.03	139.03	129.98	+	0.00	+ 6.96
015 Fibre Crops	5.3169	273.00	255.83	183.68	+	6.71	+ 48.63
016 Unmanufactured Tobacco	0.0742	243.73	243.60	215.50	+	0.05	+ 13.10
017 Poultry	0.5633	176.09	152.18	133.29	+	15.71	+ 32.11
018 Raw Milk from Bovine Animals	7.0279	143.28	143.28	134.35	+	0.00	+ 6.65
019 Eggs	0.5034	191.12	204.87	192.80	-	6.71	- 0.87
020 Raw Animal Materials / Wool	0.0351	107.88	107.67	105.50	+	0.20	+ 2.26
021 Hides, Skins & Fur Skins, Raw	0.4834	32.24	33.12	29.45	-	2.66	+ 9.47
022 Fuel Wood in Logs	0.0179	130.63	127.84	119.10	+	2.18	+ 9.68
023 Fish Live Fresh or Chilled	1.7295	158.04	158.04	157.77	+	0.00	+ 0.17
Ores/Minerals, Elec., Gas & W	12.0069	178.94	174.24	167.18	+	2.70	+ 7.03
024 Coal not Agglomerated	0.7508	75.79	75.79	75.79	+	0.00	+ 0.00
025 Natural Gas Liquified	5.7065	208.15	206.11	201.83	+	0.99	+ 3.13
026 Salt & Pure Sodium Chloride	0.0584	169.28	169.28	168.70	+	0.00	+ 0.34
027 Electrical Energy	5.4912	162.79	154.63	143.66	+	5.28	+ 13.32
Food, Beverages, Tobacco, Textil	31.1122	172.92	169.86	145.35	+	1.80	+ 18.97
Food Products, Beverages &	20.0718	164.74	163.60	145.92	+	0.70	+ 12.90
028 Meat of Animals	3.4559	185.41	184.19	162.41	+	0.66	+ 14.16
029 Vegetables & Fruit Juice	0.0058	124.92	124.92	114.40	+	0.00	+ 9.20
030 Dried Fruits & Nuts	0.1733	179.12	177.07	162.88	+	1.16	+ 9.97
031 Fruit Juices	0.3880	131.76	131.76	128.48	+	0.00	+ 2.55
032 Vegetable Oils Refined	1.9242	177.68	175.49	129.14	+	1.25	+ 37.59
033 Vegetable Ghee	1.5632	227.10	218.13	153.99	+	4.11	+ 47.48
034 Oil Cakes	0.9611	166.25	161.26	152.68	+	3.09	+ 8.89
035 Processed Liquid Milk	4.4437	143.90	143.51	142.36	+	0.27	+ 1.08
036 Milk & Cream in Solid Form	0.0316	136.17	136.00	133.46	+	0.13	+ 2.03
037 Ice Cream	0.0047	148.14	148.14	137.64	+	0.00	+ 7.63
038 Dairy Products N.E.C	0.0117	139.59	139.41	135.85	+	0.13	+ 2.75
039 Wheat Flour	2.3034	166.24	164.23	152.78	+	1.22	+ 8.81
040 Other Cereal Flour	0.0604	131.18	130.80	119.74	+	0.29	+ 9.55
041 Sugar Refined	1.7975	165.64	175.16	159.46	-	5.44	+ 3.88
042 Chocolate	0.0139	89.03	89.03	88.54	+	0.00	+ 0.55
043 Sugar Confectionary	0.0738	187.72	187.66	171.75	+	0.03	+ 9.30
044 Coffee & Tea	0.7303	139.23	131.07	129.75	+	6.23	+ 7.31
045 Spices	0.1449	334.82	342.34	251.35	-	2.20	+ 33.21
046 Other Food Products	0.0336	119.35	119.35	117.51	+	0.00	+ 1.57
047 Mineral Water	0.0207	125.37	125.24	125.24	+	0.10	+ 0.10
048 Beverages	0.6303	133.73	131.96	128.65	+	1.34	+ 3.95
049 Tobacco Products	1.2998	104.23	104.23	104.23	+	0.00	+ 0.00
Textiles & Apparels	10.3289	192.33	185.33	146.05	+	3.78	+ 31.69
050 Cotton Yarn	5.2491	239.61	226.30	164.84	+	5.88	+ 45.36
051 Nylon Yarn	0.1719	95.24	95.24	95.24	+	0.00	+ 0.00
052 Blended Yarn	0.1689	148.12	141.31	120.22	+	4.82	+ 23.21
053 Woven Fabrics	0.0128	161.21	161.21	137.73	+	0.00	+ 17.05
054 Cotton Fabrics	0.6343	170.50	170.31	150.71	+	0.11	+ 13.13
055 Other Fabrics	1.1016	126.80	126.38	114.72	+	0.33	+ 10.53
056 Silk & Reyon Fabrics	0.7350	168.54	168.50	130.35	+	0.02	+ 29.30
057 Towels	0.1235	142.27	141.44	125.60	+	0.59	+ 13.27
058 Blankets	0.0029	105.10	104.95	104.95	+	0.14	+ 0.14
059 Bed Sheets	0.0913	127.88	127.88	120.48	+	0.00	+ 6.14

Annexure C: Wholesale Price Indices by Major Groups & Commodities

(2015-16=100)

Item and Specification	Weight	Index Numbers			% Change in Oct 2021 over	
		Oct 21	Sep 21	Oct 20	Sep 2021	Oct 2020
060 Quilts	0.0019	121.31	121.31	110.26	+ 0.00	+ 10.02
061 Woolen Carpets	0.0383	137.01	137.01	137.01	+ 0.00	+ 0.00
062 Synthetic Carpets	0.0566	117.09	117.09	116.17	+ 0.00	+ 0.79
063 Hosiery Products	0.8832	139.83	139.20	123.20	+ 0.45	+ 13.50
064 Readymade Garments	1.0576	140.39	140.39	131.75	+ 0.00	+ 6.56
Leather Products	0.7115	122.09	122.09	118.88	+ 0.00	+ 2.70
065 Leather Without Hair	0.2973	112.56	112.56	108.00	+ 0.00	+ 4.22
066 Other Leather N.E.C	0.2567	114.96	114.96	111.77	+ 0.00	+ 2.85
067 Footwears	0.1575	151.69	151.69	151.00	+ 0.00	+ 0.46
Other Transportable Goods	22.3979	203.95	185.27	143.83	+ 10.08	+ 41.80
068 Timber	0.0165	157.07	157.07	152.83	+ 0.00	+ 2.77
069 Printing Paper	0.4279	130.70	130.70	130.70	+ 0.00	+ 0.00
070 Hard Board	0.1579	146.50	146.50	146.50	+ 0.00	+ 0.00
071 Motor Spirit	1.6268	188.02	170.87	146.32	+ 10.04	+ 28.50
072 Diesel Oil	5.4849	193.81	168.97	132.65	+ 14.70	+ 46.11
073 Kerosine Oil	0.2151	205.51	175.58	128.04	+ 17.05	+ <u>60.50</u>
074 Furnace Oil	3.2664	439.50	383.46	227.82	+ 14.61	+ <u>92.92</u>
075 Mobil Oil	0.7114	137.08	135.48	122.33	+ 1.18	+ 12.06
076 Chemicals	1.7720	170.88	155.24	133.14	+ 10.07	+ 28.35
077 Dyeing Material	0.1539	146.16	146.16	146.16	+ 0.00	+ 0.00
078 Fertilizers	2.8657	126.10	122.94	97.84	+ 2.57	+ 28.88
079 Pesticides	0.2763	146.51	146.51	141.59	+ 0.00	+ 3.47
080 Insecticides	0.1276	111.49	111.49	111.49	+ 0.00	+ 0.00
081 Paints & Varnishes	0.1916	153.73	141.16	135.82	+ 8.90	+ 13.19
082 Medicines	1.1428	159.31	152.03	145.17	+ 4.79	+ 9.74
083 Soaps & Detergents	0.8168	124.93	120.02	110.94	+ 4.09	+ 12.61
084 Auto Tyres	0.2703	142.11	127.22	124.76	+ 11.70	+ 13.91
085 Plastic Products	0.4550	119.91	119.91	117.75	+ 0.00	+ 1.83
086 Glass sheets	0.2089	149.20	148.44	138.76	+ 0.51	+ 7.52
087 Other Glass Articles	0.1635	151.04	151.04	149.95	+ 0.00	+ 0.73
088 Ceramics & Sanitary Fixture	0.0244	128.29	128.29	124.21	+ 0.00	+ 3.28
089 Bricks, Blocks & Tiles	0.1566	136.09	136.54	128.48	- 0.33	+ 5.92
090 Cement	1.8145	138.55	134.17	119.95	+ 3.26	+ 15.51
091 Bed Foam	0.0006	178.75	158.20	148.64	+ 12.99	+ 20.26
092 Matches	0.0505	1195.3	1195.3	1171.7	+ 0.00	+ 2.02
Metal Product, Machinery & Eq	8.7156	171.00	170.50	145.10	+ 0.29	+ 17.85
093 Steel Bar & Sheets	1.4615	241.02	239.41	159.41	+ 0.67	+ <u>51.20</u>
094 Pipe Fittings	0.0780	176.06	176.06	144.78	+ 0.00	+ 21.61
095 Steel Products	0.3879	134.31	134.30	134.16	+ 0.01	+ 0.11
096 Engines & Motors	0.0046	107.29	107.29	107.29	+ 0.00	+ 0.00
097 Vacuum Pumps	0.0155	107.56	107.56	107.56	+ 0.00	+ 0.00
098 Air Conditioners	0.0049	129.14	129.14	123.30	+ 0.00	+ 4.74
099 Cultivators	0.0551	103.75	103.75	103.75	+ 0.00	+ 0.00
100 Chuff Cutter	0.1293	128.57	128.57	110.00	+ 0.00	+ 16.88
101 Tractors	0.0028	135.63	135.63	129.36	+ 0.00	+ 4.85
102 Lathe Machines	0.0525	242.71	242.71	210.12	+ 0.00	+ 15.51
103 Concrete Mixture	0.0107	100.00	100.00	100.00	+ 0.00	+ 0.00
104 Fridge, WashM, SewM, Fans, Iron	1.1645	163.05	163.04	154.42	+ 0.01	+ 5.59
105 Electric Wires	0.0912	148.23	148.23	144.65	+ 0.00	+ 2.47
106 Lighting Equipments	1.4431	131.75	131.75	119.49	+ 0.00	+ 10.26
107 Radio & Television	0.1843	108.07	108.07	105.55	+ 0.00	+ 2.39
108 Motor Vehicles	0.0244	156.48	156.48	156.45	+ 0.00	+ 0.02
109 Motorcycles	0.2570	147.86	140.01	124.50	+ 5.61	+ 18.76
110 Bicycles	3.3483	172.55	172.55	153.05	+ 0.00	+ 12.74