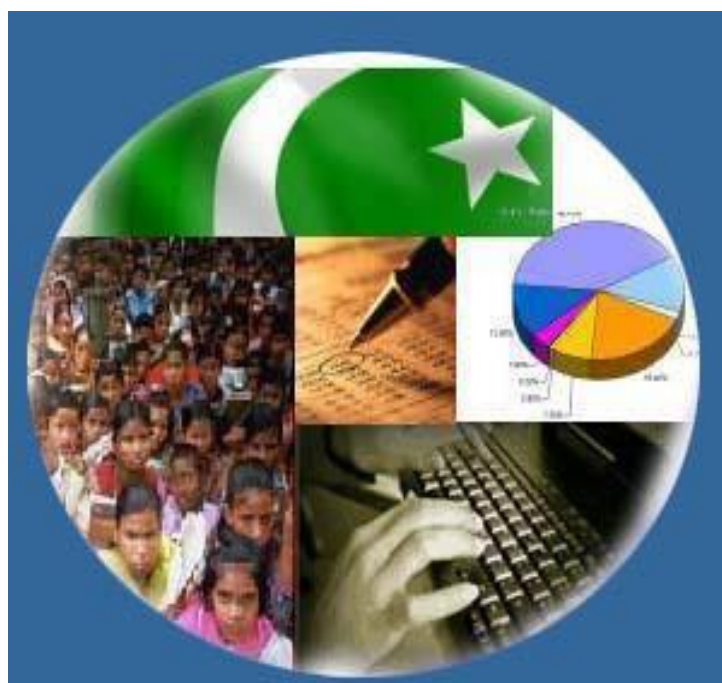




Monthly Review on Price Indices



October, 2020
(Base Year 2015-16)

Government of Pakistan
Ministry of Planning, Development & Special Initiatives
Pakistan Bureau of Statistics
Islamabad

Inflation in Brief

- CPI inflation General**, increased by 8.9% on year-on-year basis in October 2020 as compared to an increase of 9.0% in the previous month and 11.0% in October 2019. On month-on-month basis, it increased by 1.7% in October 2020 as compared to an increase of 1.5% in the previous month and an increase of 1.8% in October 2019.
- CPI inflation Urban**, increased by 7.3% on year-on-year basis in October 2020 as compared to an increase of 7.7% in the previous month and 10.9% in October 2019. On month-on-month basis, it increased by 1.3% in October 2020 as compared to an increase of 1.3% in the previous month and an increase of 1.6% in October 2019.
- CPI inflation Rural**, increased by 11.3 % on year-on-year basis in October 2020 as compared to an increase of 11.1% in the previous month and 11.3% in October 2019. On month-on-month basis, it increased by 2.4 % in October 2020 as compared to an increase of 2.0% in the previous month and an increase of 2.2% in October 2019.
- SPI inflation** on YoY increased by 12.3% in October 2020 as compared to an increase of 12.0% a month earlier and an increase of 15.1% in October 2019. On MoM basis, it increased by 3.0% in October 2020 as compared to an increase of 2.1% a month earlier and an increase of 2.7% in October 2019.
- WPI inflation** on YoY basis increased by 5.1% in October 2020 as compared to an increase of 4.3% a month earlier and an increase of 13.3% in October 2019. WPI inflation on MoM basis increased by 2.9% in October 2020 as compared to a decrease of 1.0% a month earlier and an increase of 2.0% in corresponding month (October 2019) of last year.
- Figures 1 and 2 show graphically the yearly data of Table 1.a for Urban and Rural CPI while Table 1.1 shows "Period Average" and "YoY" percent changes in indices of three years.

Table 1.a General Inflation (%) (Base 2015-16)																		
PERIOD	CPI														SPI**		WPI	
	General						Food				Non-Food							
	National		Urban		Rural		Urban		Rural		Urban		Rural		YoY	MoM	YoY	MoM
YoY	MoM	YoY	MoM	YoY	MoM	YoY	MoM	YoY	MoM	YoY	MoM	YoY	MoM	YoY	MoM	YoY	MoM	
Mar-19	8.6	2.0	8.9	1.9	8.2	2.2	8.8	2.5	9.3	3.3	9.0	1.5	7.3	1.3	10.5	2.1	16.6	2.2
Apr-19	8.3	0.7	8.4	0.8	8.1	0.6	8.3	1.3	9.3	0.6	8.4	0.6	7.2	0.6	10.0	0.5	17.2	2.0
June-19	8.4	0.6	8.5	0.7	8.3	0.5	9.0	1.3	9.7	0.6	8.3	0.3	7.1	0.4	9.9	0.6	16.5	1.2
Jun-19	8.0	0.5	8.1	0.3	7.9	0.7	7.5	-0.3	9.1	0.7	8.4	0.7	7.0	0.7	9.3	0.9	14.0	0.2
Jul-19	8.4	1.8	8.7	2.0	7.9	1.6	7.9	1.0	9.3	1.7	9.2	2.5	6.8	1.5	8.9	1.0	13.3	3.1
Aug-19	10.5	1.6	10.6	1.5	10.3	1.9	11.9	3.1	12.6	2.9	9.9	0.5	8.4	1.1	12.1	2.7	14.1	1.2
Sep-19	11.4	0.8	11.6	0.7	11.1	0.8	15.0	2.0	15.0	1.8	9.7	0.0	8.0	0.0	14.7	1.9	15.9	0.1
Oct-19	11.0	1.8	10.9	1.6	11.3	2.2	13.7	1.4	14.6	2.6	9.3	1.7	8.7	1.8	15.1	2.7	13.3	2.0
Nov-19	12.7	1.3	12.1	1.0	13.6	1.9	16.6	2.4	19.3	3.4	9.6	0.2	9.0	0.6	20.2	3.7	11.2	-0.8
Dec-19	12.6	-0.3	12.0	-0.4	13.6	-0.3	16.7	-1.7	19.7	-1.1	9.5	0.4	8.8	0.4	18.1	-2.0	12.4	-0.3
Jan-20	14.6	2.0	13.4	1.7	16.3	2.4	19.5	2.7	23.8	3.4	10.2	1.1	10.5	1.5	18.3	0.5	15.4	1.8
Feb-20	12.4	-1.0	11.2	-1.1	14.2	-1.0	15.2	-1.4	19.7	-1.6	9.1	-0.9	9.8	-0.4	14.5	-0.8	12.7	-0.7
Mar-20	10.2	0.0	9.3	0.1	11.7	-0.1	13.0	0.6	15.5	-0.3	7.3	-0.1	8.5	0.1	11.8	-0.3	9.3	-0.9
Apr-20	8.5	-0.8	7.7	-0.7	9.8	-1.1	10.4	-1.0	12.9	-1.7	6.2	-0.5	7.4	-0.5	9.3	-1.8	4.9	-2.0
May-20	8.2	0.3	7.3	0.3	9.7	0.3	10.6	1.5	13.7	1.4	5.4	-0.4	6.4	-0.5	11.0	2.2	1.5	-2.1
Jun-20	8.6	0.8	7.6	0.7	10.0	1.0	12.9	1.8	15.2	2.0	4.7	0.0	5.8	0.1	11.5	1.4	0.9	-0.3
July-20	9.3	2.5	7.8	2.2	11.6	3.0	15.1	3.0	17.8	4.0	3.9	1.7	6.5	2.2	13.7	3.0	3.2	5.4
Aug-20	8.2	0.6	7.1	0.8	9.9	0.4	11.3	-0.3	13.5	-0.9	4.8	1.5	6.8	1.5	11.7	0.9	3.3	1.3
Sep-20	9.0	1.5	7.7	1.3	11.1	2.0	12.4	3.0	15.8	3.8	5.0	0.2	7.2	0.3	12.0	2.1	4.3	1.0
Oct-20	8.9	1.7	7.3	1.3	11.3	2.4	13.9	2.8	17.7	4.3	3.6	0.3	5.8	0.5	12.3	3.0	5.1	2.9

** SPI for quintile 1. Digits 0.0* are due to rounding off.

Core inflation (NFNE)

7. Measured by **non-food non-energy Urban CPI** increased by 5.6% on (YoY) basis in October, 2020 as compared to an increase of 5.5% in the previous month and 7.7% in October, 2019. On (MoM) basis, it increased by 0.6% in October, 2020 as compared to increase of 0.3% in previous month, and an increase of 0.5% in corresponding month of last year i.e. October, 2019.
8. Measured by **non-food non-energy Rural CPI** increased by 7.6% on (YoY) basis in October, 2020 as compared to an increase of 7.8% in the previous month and 8.6% in October, 2019. On (MoM) basis, it increased by 0.6% in October, 2020 as compared to an increase of 0.4% in previous month, and an increase of 0.7% in corresponding month of last year i.e. October, 2019.

Core inflation (Trimmed)

9. Measured by 20% **weighted trimmed mean Urban CPI** increased by 6.5% on (YoY) basis in October, 2020 as compared to 7.1% in the previous month and by 8.9% in October, 2019. On (MoM) basis, it increased by 0.6% in October, 2020 as compared to an increase of 0.4% in the previous month and an increase of 0.5% in corresponding month of last year i.e. October, 2019.
10. Measured by 20% **weighted trimmed mean Rural CPI** increased by 9.5% on (YoY) basis in October, 2020 as compared to 10.0% in the previous month and by 9.4% in October, 2019. On (MoM) basis, it increased by 1.1% in October, 2020 as compared to an increase of 0.9% in the previous month and an increase of 0.6% in corresponding month of last year i.e. October, 2019.

Table 1.b Core Inflation (%) (Base 2015-16)

Period	NFNE				Trimmed			
	Urban		Rural		Urban		Rural	
	YoY	MoM	YoY	MoM	YoY	MoM	YoY	MoM
Oct-19	7.7	0.5	8.6	0.7	8.9	0.5	9.4	0.7
Nov-19	7.5	0.3	8.4	0.5	9.5	0.4	10.7	0.7
Dec-19	7.5	0.4	8.1	0.3	9.6	0.2	10.8	0.3
Jan-20	7.9	1.1	9.0	1.0	10.3	1.2	12.7	1.9
Feb-20	8.0	0.2	9.4	0.5	9.7	0.1	12.8	0.6
Mar-20	7.4	0.3	9.4	0.6	8.7	0.3	11.4	0.1
Apr-20	6.4	0.2	8.5	0.3	6.7	-0.2	9.3	-0.6
May-20	6.3	0.4	8.4	0.4	6.7	0.4	8.9	0.5
Jun-20	6.5	0.4	8.8	0.7	7.4	0.4	9.9	0.9
Jul-20	5.3	0.6	7.8	1.1	6.7	0.9	9.8	1.5
Aug-20	5.6	0.7	7.6	0.8	7.0	1.3	9.3	1.0
Sep-20	5.5	0.3	7.8	0.4	7.1	0.4	10.0	0.9
Oct-19	5.6	0.6	7.6	0.6	6.5	0.6	9.5	1.1

Table 1.1 Period Average and Y-o-Y % Change

INDEX	Average July- October % changes			October over October % changes		
	2020-2021	2019-2020	2018-2019	2020-2021	2019-2020	2018-2019
CPI (National)	8.86	10.32	6.19	8.91	11.04	6.50
CPI(Urban)	7.49	10.45	6.39	7.82	10.86	7.04
CPI(Rural)	10.97	10.14	5.88	10.55	11.33	5.67
SPI	12.43	12.70	2.30	12.33	15.11	1.73
WPI	3.98	14.10	16.58	5.13	13.27	18.64

Figure 1: Urban Inflation - YoY, Special Indices

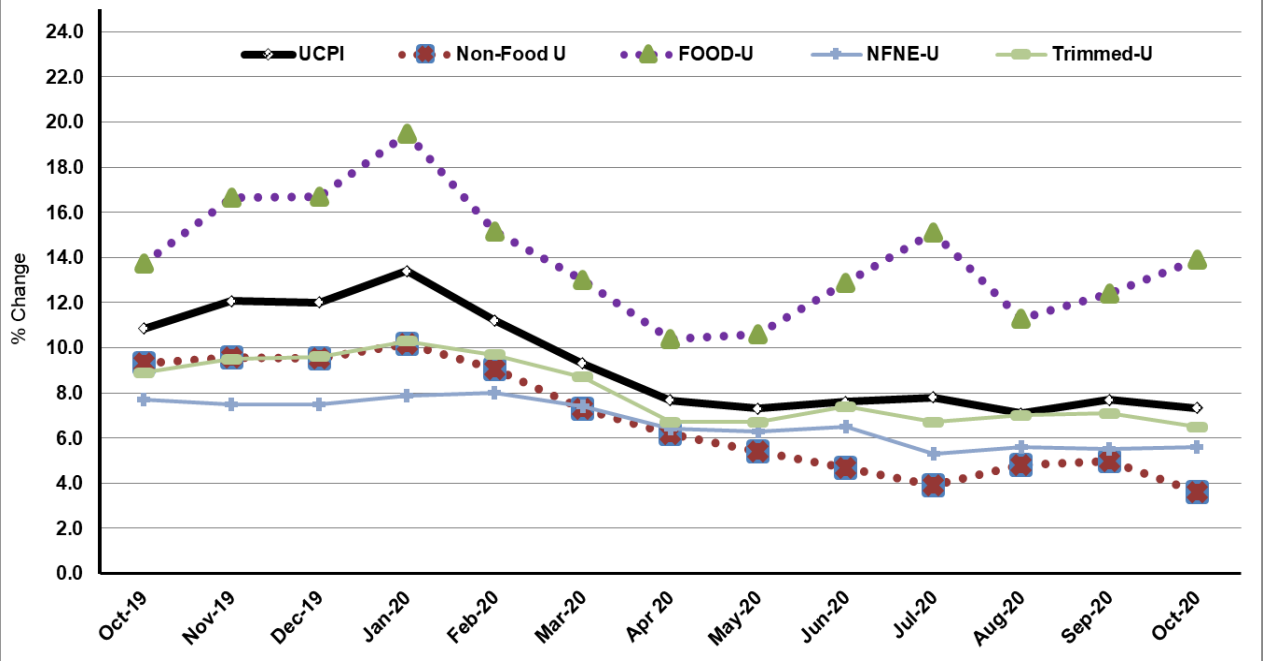


Figure 2: Rural Inflation - YoY, Special Indices

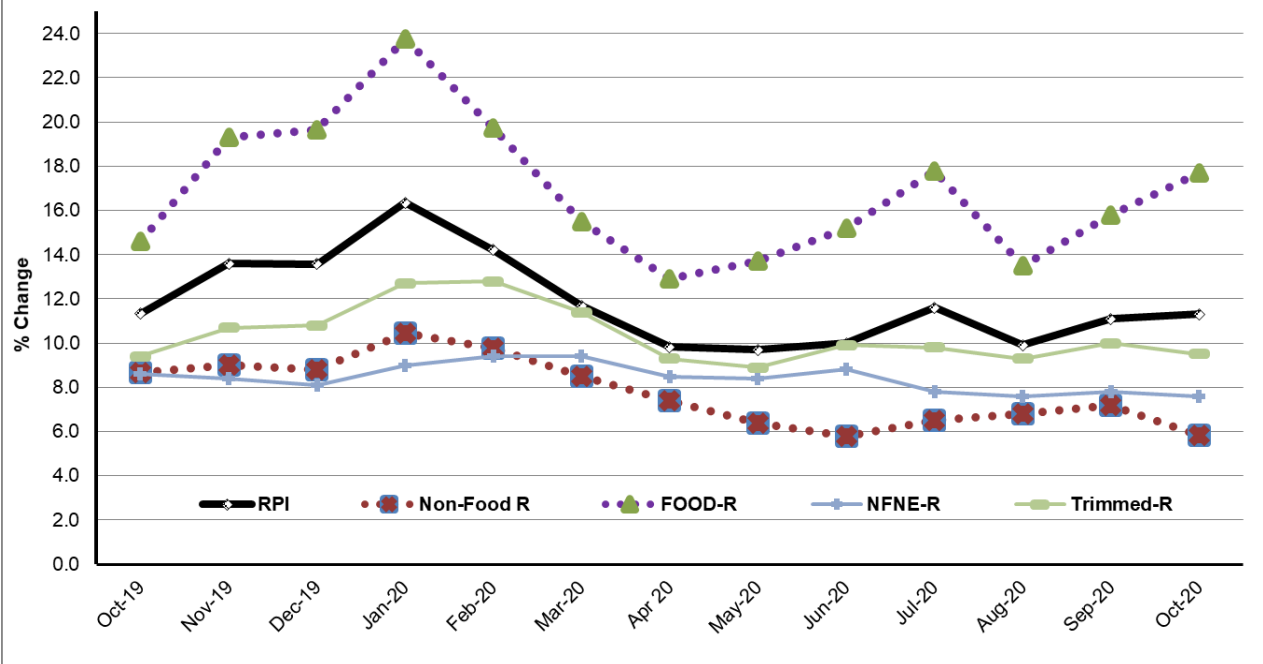


Figure 3: UCPI Inflation MoM, Special Indices

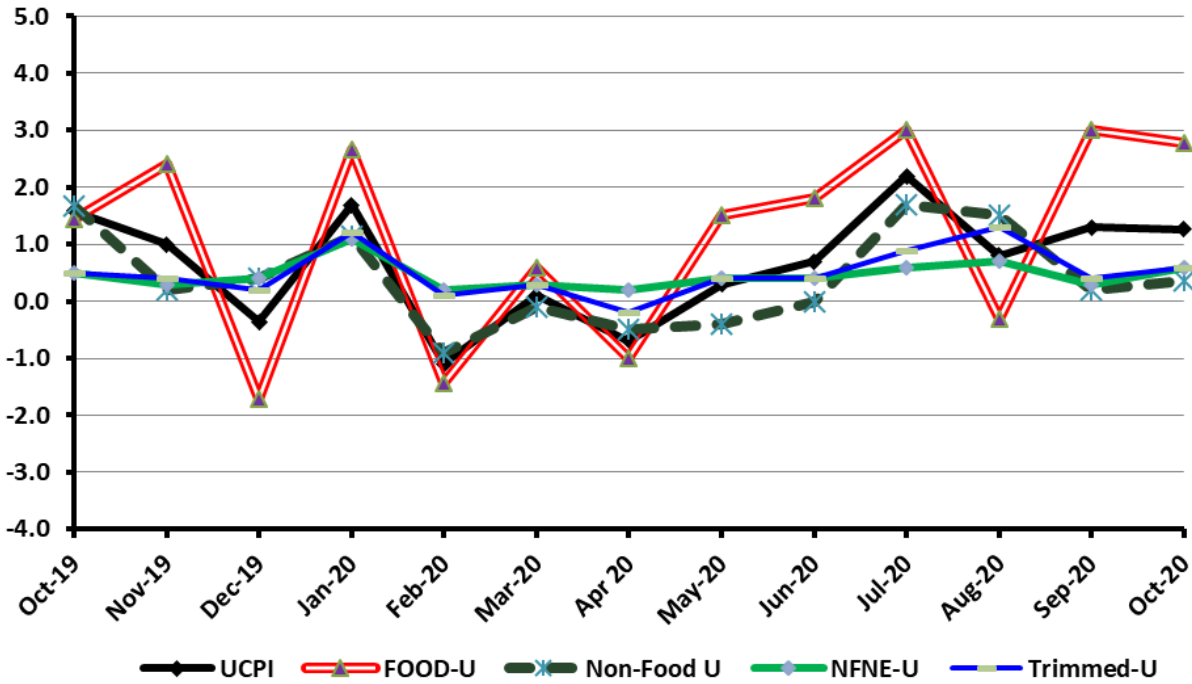


Figure 4: RPI Inflation MoM, Special Indices

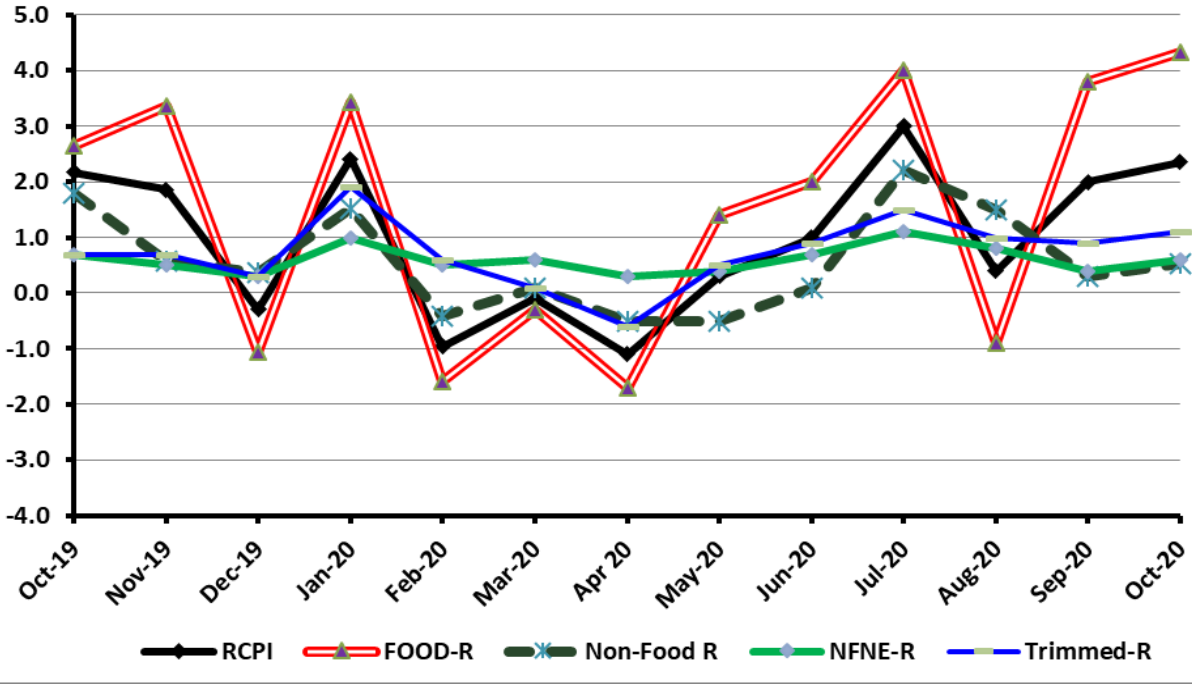


Figure 5: CPI Y.o.Y (National, Urban, Rural)

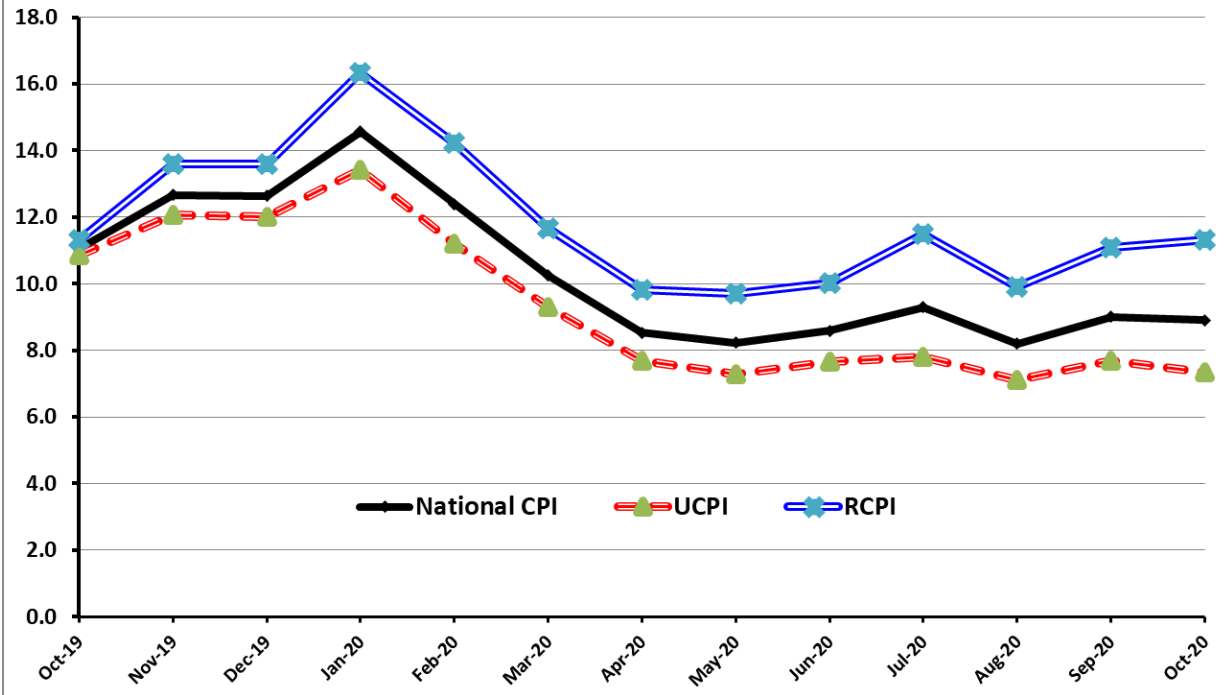
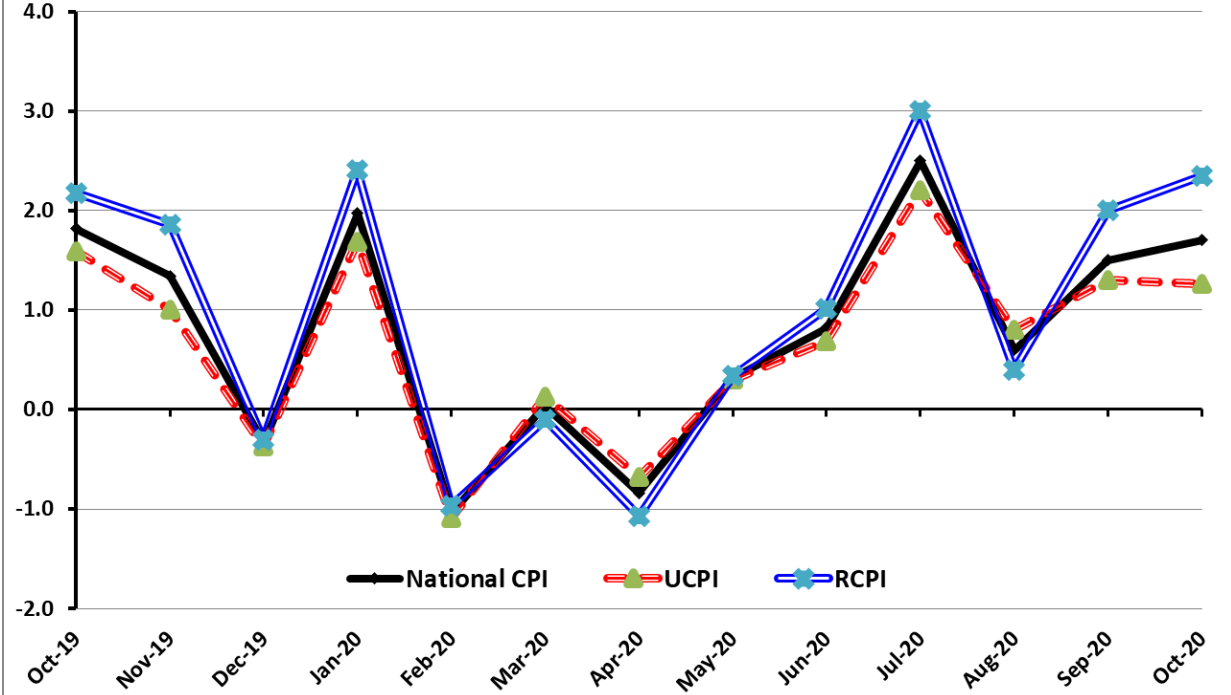


Figure 6: CPI M.o.M (National, Urban, Rural)



I. National Consumer Price Index (N-CPI)

The **National Consumer Price Index** of October 2020 is increased by **1.70%** over September 2020 and increased by **8.91%** over corresponding month of the last year i.e. October 2019.

Table 1: Consumer Price Index (National) by Group of Commodities and Services (Base 2015-16)									
No	Group	Group Weight (%)	Indices			% Change Oct 2020 Over		Impact (In % points) Oct 2020 Over	
			Oct 2020	Sept 2020	Oct 2019	Sept 2020	Oct 2019	Sept 2020	Oct 2019
	General	100.00	140.67	138.32	129.16	1.70	8.91	1.70	8.91
1.	Food & Non-alcoholic Bev.	34.58	149.76	144.14	128.46	3.90	16.58	1.41	5.70
	<i>Non-perishable Food Items</i>	29.60	144.88	140.76	122.77	2.93	18.01	0.88	5.07
	<i>Perishable Food Items</i>	4.99	178.73	164.19	162.24	8.85	10.16	0.52	0.64
2.	Alcoholic Bev. & Tobacco	1.02	143.03	142.40	134.97	0.44	5.97	0.00	0.06
3.	Clothing & Footwear	8.60	138.08	137.52	126.72	0.41	8.96	0.03	0.76
4.	Housing, Water, Electricity, Gas & Fuels	23.63	132.92	132.43	129.38	0.37	2.73	0.08	0.65
5.	Furnishing & Household Equipment Maintenance	4.10	133.91	132.74	123.99	0.88	7.99	0.03	0.31
6.	Health	2.79	145.42	144.46	134.87	0.67	7.82	0.02	0.23
7.	Transport	5.91	139.82	139.27	141.90	0.39	-1.46	0.02	-0.09
8.	Communication	2.21	107.06	107.01	106.73	0.04	0.31	0.00	0.01
9.	Recreation & Culture	1.59	123.11	122.32	118.45	0.64	3.94	0.01	0.06
10.	Education	3.79	143.71	142.93	141.75	0.55	1.38	0.02	0.06
11.	Restaurants & Hotels	6.92	136.59	135.42	125.44	0.86	8.89	0.06	0.60
12.	Miscellaneous	4.87	146.22	146.06	131.01	0.11	11.61	0.01	0.57

II. Urban Consumer Price Index (UCPI)

The **Urban Consumer Price Index** of **October 2020** is increased by **1.25%** over **September 2020** and increased by **7.32%** over corresponding month of the last year i.e. **October 2019**.

Table 2: Consumer Price Index (Urban) by Group of Commodities and Services (Base 2015-16)

No	Group	Group Weight (%)	Indices			% Change Oct 2020 Over		Impact (In % points) Oct 2020 Over	
			Oct 2020	Sep 2020	Oct 2019	Sep 2020	Oct 2019	Sep 2020	Oct 2019
	General	100.00	139.27	137.53	129.75	1.27	7.34	1.27	7.34
1.	Food & Non-alcoholic Bev.	30.42	147.23	142.73	128.09	3.15	14.94	0.99	4.49
	Non-perishable Food Items	25.97	142.81	138.80	122.40	2.89	16.67	0.76	4.08
	Perishable Food Items	4.46	173.00	165.67	161.24	4.42	7.29	0.24	0.40
2.	Alcoholic Bev.& Tobacco	0.85	151.34	150.34	142.53	0.67	6.18	0.01	0.06
3.	Clothing & Footwear	8.01	134.10	133.75	124.17	0.26	8.00	0.02	0.61
4.	Housing, Water, Electricity, Gas & Fuels	27.03	134.44	134.02	131.37	0.31	2.34	0.08	0.64
5.	Furnishing & Household Equip. & Maintenance	4.09	132.88	131.57	124.64	1.00	6.61	0.04	0.26
6.	Health	2.31	145.63	144.31	135.68	0.91	7.33	0.02	0.18
7.	Transport	6.14	140.58	140.06	142.96	0.37	-1.66	0.02	-0.11
8.	Communication	2.35	108.26	108.23	107.96	0.03	0.28	0.00	0.01
9.	Recreation & Culture	1.73	120.33	120.03	116.89	0.25	2.94	0.00	0.05
10.	Education	4.88	146.16	145.49	144.43	0.46	1.20	0.02	0.06
11.	Restaurants & Hotels	7.41	135.28	134.14	124.31	0.85	8.82	0.06	0.63
12.	Miscellaneous	4.77	144.40	144.68	131.58	-0.19	9.74	-0.01	0.47

Main contributors to month-on-month and year-on-year percentage changes are given below and detail is given in Annexure A.

1. MONTH-ON-MONTH Top few commodities which varied from previous month are given below: -

FOOD

Increased: Tomatoes (48.36%), Onions (39.07%), Chicken (26.62%), Eggs (23.81%), Wheat (8.39%), Wheat products (8.07%), Sugar (4.58%), Wheat flour (4.1%), Besan (2.89%), Pulse moong (1.69%), Rice (1.45%), Pulse mash (1.26%), Readymade food (0.98%), Gram whole (0.85%), Pulse masoor (0.85%), Potatoes (0.82%), Pulse gram (0.81%) and Butter (0.78%).

Decreased: Fresh vegetables (6.36%), Fresh fruits (3.31%) and Condiments & Spices (2.39%).

NON-FOOD

Increased: Doctor (MBBS) (2.57%), Liquified Hydrocarbons (2.12%), Furniture and furnishing (1.9%), Hosiery (1.5%), Household textiles (1.36%), Therapeutic Appliances and Equipment (1.13%), Motor vehicle accessories (0.89%), Household equipment (0.88%), House rent (0.88%), Household servant (0.87%), Transport services (0.83%) and Hospitals services (0.83%).

2. YEAR-ON-YEAR: Top few commodities which varied from previous year i.e. October, 2019 are given below: -

FOOD

Increased: Tomatoes (66.93%), Potatoes (53.14%), Wheat (52.21%), Eggs (43.32%), Pulse moong (40.94%), Beans (37.91%), Condiments & Spices (36.6%), Pulse mash (35.64%), Sugar (32.97%), Wheat products (31.52%), Wheat flour (24.67%), Butter (22.74%), Pulse masoor (19.88%), Chicken (18.22%) and Vegetable ghee (15.76%).

Decreased: Fresh vegetables (9.09%), Fish (8.99%), Onions (8.35%) and Fresh fruits (3.85%).

NON-FOOD

Increased: Personal Effects (19.42%), Water supply (18.92%), Garbage collection (16.26%), Doctor (MBBS) clinic fee (14.73%), Woollen cloth (13.48%), Cleaning and laundering (11.39%), Furniture and furnishing (9.7%), Marriage Hall Charges (7.55%), Drugs and medicines (6.91%), Hosiery (6.7%), Construction input items (6.13%) and Construction wage rates (5.78%).

Decreased: Liquified Hydrocarbons (12.31%), Electricity charges (7.77%) and Motor fuel (7.15%).

III. Rural Consumer Price Index (RCPI)

The Rural Consumer Price Index of **October 2020** is increased by **2.35%** over **September 2020** and increased by **11.31%** over corresponding month of the last year i.e. **October 2019**.

Table 3: Consumer Price Index (Rural) by Group of Commodities and Services (Base 2015-16)

No	Group	Group Weight (%)	Indices			% Change Oct 2020 Over		Impact (In % points) Oct 2020 Over	
			Oct 2020	Sep 2020	Oct 2019	Sep 2020	Oct 2019	Sep 2020	Oct 2019
	General	100.00	142.79	139.51	128.28	2.35	11.31	2.35	11.31
1.	Food & Non-alcoholic Bev.	40.87	152.60	145.72	128.88	4.72	18.40	2.02	7.56
	Non-perishable Food Items	35.08	147.20	142.96	123.19	2.97	19.49	1.07	6.57
	Perishable Food Items	5.79	185.38	162.48	163.41	14.09	13.44	0.95	0.99
2.	Alcoholic Bev.& Tobacco	1.28	134.65	134.39	127.34	0.19	5.74	0.00	0.07
3.	Clothing & Footwear	9.48	143.15	142.32	129.97	0.58	10.14	0.06	0.97
4.	Housing, Water, Electricity, Gas & Fuels	18.49	129.57	128.93	125.00	0.50	3.66	0.08	0.66
5.	Furnishing & Household Equip. & Maintenance	4.10	135.45	134.49	123.02	0.71	10.10	0.03	0.40
6.	Health	3.51	145.21	144.60	134.07	0.42	8.31	0.02	0.31
7.	Transport	5.56	138.56	137.96	140.13	0.43	-1.12	0.02	-0.07
8.	Communication	1.99	104.91	104.84	104.53	0.07	0.36	0.00	0.01
9.	Recreation & Culture	1.38	128.38	126.67	121.40	1.35	5.75	0.02	0.07
10.	Education	2.13	135.26	134.08	132.50	0.88	2.08	0.02	0.05
11.	Restaurants & Hotels	6.19	138.95	137.74	127.47	0.88	9.01	0.05	0.55
12.	Miscellaneous	5.02	148.83	148.03	130.20	0.54	14.31	0.03	0.73

Main contributors to month-on-month and year-on-year percentage changes are given below and detail is given in Annexure A.

1. MONTH-ON-MONTH Top few commodities which varied from previous month are given below: -

FOOD

Increased: Tomatoes (64.99%), Onions (58.39%), Eggs (24.88%), Chicken (23.14%), Wheat (5.54%), Sugar (4.89%), Fresh Vegetables(4.06%), Fresh fruits (3.5%), Wheat Flour (3.28%), Wheat Products (3.07%), Potatoes (3.05%), Pulse Masoor (2.97%), Dry fruits (2.73%), Honey (2.5%), Fish (2.38%), Bakery and Confectionary (2.38%), Meat (1.76%), Pulse Mash (1.6%) and Cooking oil (1.47%).

Decreased: Pulse Moong (2.91%), Condiments and Spices (1.85%) and Beans (0.71%).

NON-FOOD

Increased: Stationery (2.75%), Liquified Hydrocarbons (2.65%), Newspapers (2.4%), Construction Input Items (2.13%), Hosiry (1.71%), Plastic Products (1.49%), Woolen Cloth (1.37%), Solid Fuel (1.33%), Text Books (1.3%), Mechanical Services (1.18%), Transport Services (1.07%), Doctor Clinic Fee (1.02%), Household Textiles (1%), Products for Personal Care (0.89%) and Education (0.88%).

Decreased: Electricity Charges (2.33%).

2. YEAR-ON-YEAR: Top few commodities which varied from previous year i.e. October 2019 are given below:-

FOOD

Increased Tomatoes (104.01%), Potatoes (61.02%), Condiments & Spices (53.69%), Wheat (51.11%), Eggs (43.71%), Pulse Moong (38.99%), Pulse Mash (33.87%), Sugar (33.37%), Beans (31.63%), Pulse Masoor (30.5%), Wheat Flour (29.43%), Wheat Products (24.82%), Rice (17.93%), Vegetable ghee (17.3%), Bakery and Confectionary (17.15%), Chicken (15.63%), Dry fruits (14.14%), Cooking oil (14.08%), Readymade Food (14%), Butter(11.3%), Meat (10.99%), Besan (10.28%), Pulse Gram (8.48%), Milk fresh (7.68%) and Milk powder (7.45%).

Decreased: Fresh Vegetables (9.53%), Onions (2.56%), Fish (1.3%) and Gram Whole (0.67%).

NON-FOOD

Increased: Water Supply (38.75%), Personal Effects (23.48%), Cleaning and Laundering (19.58%), Hosiery (18.45%), Doctor Clinic Fee (15.58%), Plastic Products (13.84%), Cotton Cloth (13.59%), Furniture and Furnishing (13.08%), Solid Fuel (12.31%), Dental Services (12.13%), Medical Tests(10.63%), Footwear (9.37%), Woolen Readymade Garments (8.84%), Stationery (8.47%), Construction Wage Rates (7.9%), Drugs and Medicines (6.86%), Construction Input Items (6.53%), Transport Services (6.12%), Text Books (5.68%), House Rent(5.2%), Education (2.08%) and Motor Vehicles(2.06%).

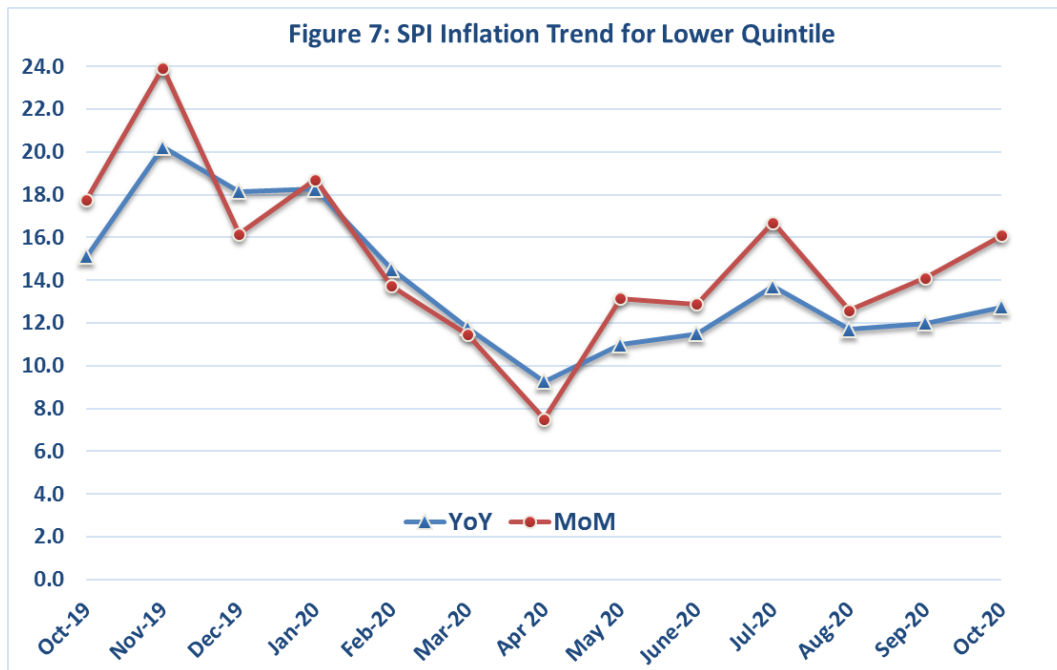
Decreased: Liquefied Hydrocarbons (10.84%), Electricity Charges (7.77%) and Motor Fuels (7.22%).

IV. Sensitive Price Indicator

Quintile-wise percentage changes YoY and MoM are given below in Table 4. The series from **October 2019** to **October 2020** is also graphed below in Figure 7.

Table 4: Sensitive Price Indicator (Base 2015-16)					
Quintiles	Indices			% Change October 2020 Over	
	October 2020	September 2020	October 2019	September 2020	October 2019
1	148.74	143.90	131.93	3.36	12.74
2	143.17	138.63	127.55	3.27	12.25
3	144.29	139.94	129.56	3.11	11.37
4	140.55	136.36	126.81	3.07	10.84
5	140.98	137.43	130.36	2.58	8.15
Combined	140.94	137.04	128.50	2.85	9.68

Table 4.1 : Weekly Percentage Change of SPI During Octobers - 2020					
Quintiles	% Change with Previous week				
	01-10-2020	08-10-2020	15-10-2020	22-10-2020	29-10-2020
Quintile 1	0.85	1.56	0.26	-0.44	1.91
Combined	0.71	1.24	0.45	-0.23	1.38



V. Wholesale Price Index

The Wholesale Price Index for October, 2020 increased by **2.88%** over September 2020. It increased by **5.13%** over the corresponding month of the last year. YoY and MoM movements, from October, 2019 to October, 2020 are also graphed below in Figure 8.

Table 5: Wholesale Price Index by Group of Commodities (Base: 2015-16)									
No.	Group	Group Weight (%)	Indices			% Change October 2020 Over		Impact (In % points) October 2020 Over	
			Oct 20	Sep 20	Oct 19	Sep 20	Oct 19	Sep 20	Oct 19
	General	100.00	150.70	146.48	143.34	2.88	5.13	2.88	5.13
1.	Agriculture Forestry & Fishery	25.77	157.36	146.54	139.75	7.38	12.60	1.90	3.17
2.	Ores/Minerals, Elec., Gas & Water	12.01	167.18	165.18	167.86	1.21	-0.41	0.16	-0.06
3.	Food Products, Beverages & Tobacco, Textiles, Apparel & Leather Products	31.11	145.35	141.57	128.49	2.67	13.12	0.80	3.66
	i. Food Products, Beverages & Tobacco	20.07	145.92	140.17	123.72	4.10	17.94	0.79	3.11
	ii. Textiles & Apparels	10.33	146.05	145.84	138.92	0.14	5.13	0.01	0.51
	iii. Leather Products	0.71	118.88	118.88	111.94	0.00	6.20	0.00	0.03
4.	Other Transportable Goods	22.40	143.83	143.73	160.85	0.07	-10.58	0.02	-2.66
5.	Metal Product, Machinery & Equipment	8.72	145.10	145.10	128.21	0.00	13.17	0.00	1.03

Main contributors to month-on-month and year-on-year percentage changes are given below and detail is given in Annexure C.

1. MONTH-ON-MONTH Top few commodities which varied from previous month are given below: -

Increased: Eggs (27.81%), Poultry (27.54%), Fibre Crops (26.28%), Wheat (8.72%), Chocolate (8.35%), Millet/Bajra (6.92%), Sugar Refined (6.15%), Wheat Flour (5.39%), Meat of Animals (5.37%), Processed Liquid Milk (5.12%), Oil Cakes (5.06%), Cotton Seeds (4.48%), Vegetables (3.57%), Natural Gas Liquefied (3.2%), Vegetable Ghee (2.85%), Vegetable Oils Refined (2.56%), Milk & Cream in Solid Form (2.54%), Fertilizers (2.27%), Raw Milk from Bovine Animals (2.13%), Dried Fruits & Nuts (1.55%), Edible Roots / Potatoes (1.55%) and Cement(1.27%).

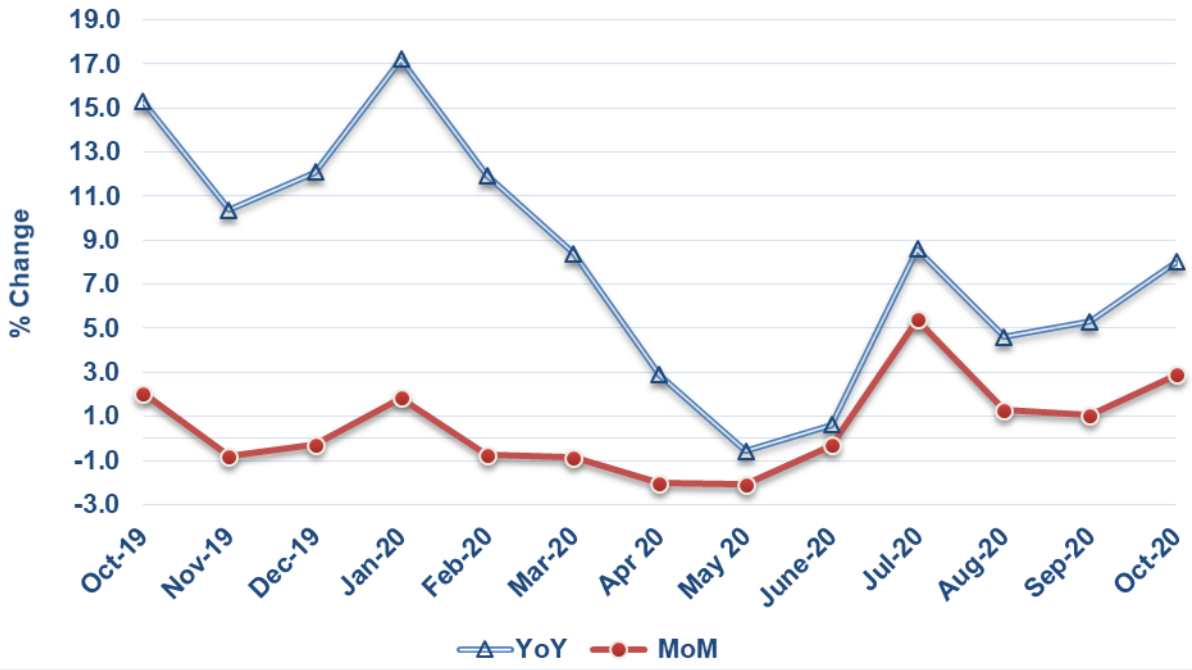
Decreased: Stimulant & Spice Crops (18.07%), Electrical Energy (1.47%), Diesel Oil (1.1%), Bricks, Blocks & Tiles (0.83%), Hides, Skins & Fur Skins (0.74%), Fresh Fruits (0.51%), Steel Bar & Sheets (0.37%) and Other Cereal Flour (0.27%).

2. YEAR-ON-YEAR Top few commodities which varied from previous year i.e. October, 2019 are given below: -

Increased: Spices (78.79%), Edible Roots / Potatoes (67.57%), Wheat (55.54%), Eggs (47.93%), Sugar Confectionary (38.72%), Cotton Fabrics (38.11%), Timber (36.76%), Stimulant & Spice Crops (35.68%), Unmanufactured Tobacco (33.98%), Sugar Refined (33.81%), Wheat Flour (32.3%), Ice Cream (28.23%), Pesticides (27.74%), Lathe Machines (25.03%), Footwear (21.71%), Oil Cakes (20.78%), Tractors (18.44%), Meat of Animals (18.17%), Vegetable Ghee (17.67%), Sugar Crops (16.03%), Processed Liquid Milk (16%), Salt & Pure Sodium Chloride (15.78%), Poultry (15.47%), Raw Milk from Bovine Animals (15.19%), Electric Wires (15.05%), Rice(13.87%), Other Oil Seeds (13.1%), Fresh Fruits(10.39%), and Natural Gas Liquefied(2.49%).

Decreased: Kerosene Oil (34.43%), Poultry (27.15%), Diesel Oil (25.34%), Furnace Oil (10.55%), Fertilizers (9.86%), Motor Spirit (8.65%), Fibre Crops (8.03%), Coal not Agglomerated (7.76%), Glass sheets (2.87%), Hides, Skins & Fur Skins, Raw (2.21%), Blended Yarn (1.51%), Maize (1.41%), Insecticides (0.76%) and Natural Gas Liquefied (0.21%).

Figure 8: WPI Inflation Trends



Annexure A:CPI (Urban) Index Numbers by Commodity Groups & Commodities (2015-16=100)

Item and Specification	Weight	Index Numbers			% Change in Oct 2020 over			
		Oct 20	Sep 20	Oct 19	Sep 2020	Oct 2019		
General	100.0000	139.27	137.53	129.75	+	1.27	+	7.34
Food and non-alcoholic Bevera	30.4215	147.23	142.73	128.09	+	3.15	+	14.94
01 Wheat	0.6120	169.68	156.54	111.48	+	8.39	+	<u>52.21</u>
02 Wheat flour	3.0075	141.61	136.03	113.59	+	4.10	+	24.67
03 Wheat products	0.0936	151.08	139.80	114.87	+	8.07	+	31.52
04 Besan	0.0830	122.27	118.83	111.15	+	2.89	+	10.00
05 Rice	1.1804	139.41	137.42	128.37	+	1.45	+	8.60
06 Bakery and confectionary	0.4770	138.87	138.33	120.53	+	0.39	+	15.22
07 Nimco	0.1224	133.68	132.95	116.71	+	0.55	+	14.54
08 Meat	2.0411	155.08	154.20	139.33	+	0.57	+	11.30
09 Chicken	1.3631	134.72	106.40	113.96	+	26.62	+	18.22
10 Fish	0.3855	112.33	111.86	123.42	+	0.42	-	8.99
11 Milk fresh	7.1070	133.50	132.92	118.51	+	0.44	+	12.65
12 Milk products	0.6407	136.98	136.35	123.45	+	0.46	+	10.96
13 Milk powder	0.3106	133.81	132.88	123.08	+	0.70	+	8.72
14 Eggs	0.5083	189.00	152.65	131.87	+	23.81	+	43.32
15 Butter	0.0932	173.48	172.14	141.34	+	0.78	+	22.74
16 Mustard oil	0.0120	131.01	128.98	112.04	+	1.57	+	16.93
17 Cooking oil	1.1016	143.33	142.54	128.66	+	0.55	+	11.40
18 Vegetable ghee	1.0324	148.86	148.51	128.59	+	0.24	+	15.76
19 Dry fruits	0.3299	131.56	130.99	120.22	+	0.44	+	9.43
20 Fresh fruits	1.4363	105.60	109.22	109.83	-	3.31	-	3.85
21 Pulse masoor	0.1624	104.91	104.03	87.51	+	0.85	+	19.88
22 Pulse moong	0.1697	150.82	148.32	107.01	+	1.69	+	40.94
23 Pulse mash	0.1152	103.56	102.27	76.35	+	1.26	+	35.64
24 Pulse gram	0.1660	120.29	119.32	108.91	+	0.81	+	10.45
25 Gram whohe	0.0912	123.29	122.25	118.96	+	0.85	+	3.64
26 Beans	0.0408	157.51	156.25	114.21	+	0.81	+	37.91
27 Potatoes	0.4496	273.51	271.28	178.60	+	0.82	+	<u>53.14</u>
28 Onions	0.5928	171.57	123.37	187.20	+	39.07	-	8.35
29 Tomatoes	0.3459	288.50	194.46	172.83	+	48.36	+	<u>66.93</u>
30 Fresh vegetables	1.5306	170.25	181.82	187.27	-	6.36	-	9.09
31 Sugar	1.1130	157.78	150.87	118.66	+	4.58	+	32.97
32 Gur	0.0379	147.74	144.31	126.50	+	2.38	+	16.79
33 Honey	0.1017	130.05	128.34	116.04	+	1.33	+	12.07
34 Sweetmeat	0.3535	147.36	144.79	134.50	+	1.77	+	9.56
35 Ice cream	0.1044	136.35	136.32	123.33	+	0.02	+	10.56
36 Condiments and Spices	1.3340	195.08	199.86	142.81	-	2.39	+	36.60
37 Dessert preparation	0.0419	126.53	125.99	115.02	+	0.43	+	10.01
38 Tea	0.8427	140.70	140.74	140.05	-	0.03	+	0.46
39 Beverages	0.8906	127.64	127.85	121.60	-	0.16	+	4.97
Alcoholic Beverages, Tobacco	0.8540	151.34	150.34	142.53	+	0.67	+	6.18
40 Cigarettes	0.7167	141.25	140.28	134.58	+	0.69	+	4.96
41 Pan prepared	0.1373	203.97	202.89	184.05	+	0.53	+	10.82
Clothing and footwear	8.0096	134.10	133.75	124.17	+	0.26	+	8.00
42 Cotton cloth	2.2227	137.17	137.16	126.13	+	0.01	+	8.75
43 Woolen cloth	0.8361	131.55	131.47	115.92	+	0.06	+	13.48
44 Readymade garments	1.3196	132.21	131.13	126.76	+	0.82	+	4.30
45 Woolen readymade garments	0.4307	127.19	127.17	116.29	+	0.02	+	9.37
46 Tailoring	1.0741	142.01	141.80	130.52	+	0.15	+	8.80
47 Hosiry	0.4070	132.36	130.41	124.05	+	1.50	+	6.70
48 Dopatta	0.1713	126.54	125.80	115.58	+	0.59	+	9.48
49 Cleaning and laundring	0.0665	142.34	142.15	127.78	+	0.13	+	11.39
50 Footware	1.4816	129.87	129.81	122.11	+	0.05	+	6.35
Housing, water, Elec., Gas an	27.0332	134.44	134.02	131.37	+	0.31	+	2.34
51 House rent	19.2558	133.24	132.08	127.29	+	0.88	+	4.67
52 Construcion input items	0.3765	147.35	146.96	138.84	+	0.27	+	6.13
53 Construction wage rates	0.2025	152.51	152.47	144.18	+	0.03	+	5.78
54 Water supply	0.5269	156.43	156.23	131.54	+	0.13	+	18.92
55 Garbage collection	0.1064	169.20	169.20	145.54	+	0.00	+	16.26
56 Electricity charges	4.5562	117.04	119.83	126.90	-	2.33	-	7.77
57 Gas charges	1.0807	216.94	216.94	216.94	+	0.00	+	0.00
58 Liquified Hydrocarbons	0.5064	129.98	127.28	148.23	+	2.12	-	12.31
59 Solid Fuel	0.4218	114.89	114.70	109.67	+	0.17	+	4.76
Furnishing and household equi	4.0937	132.88	131.57	124.64	+	1.00	+	6.61

Annexure A:CPI (Urban) Index Numbers by Commodity Groups & Commodities (2015-16=100)

Item and Specification	Weight	Index Numbers			% Change in Oct 2020 over	
		Oct 20	Sep 20	Oct 19	Sep 2020	Oct 2019
60 Furniture and furnishing	0.4750	134.87	132.35	122.94	+ 1.90	+ 9.70
61 Carpets	0.0308	112.53	112.12	107.59	+ 0.37	+ 4.59
62 Household textiles	0.3420	128.77	127.04	123.48	+ 1.36	+ 4.28
63 Household equipments	1.0032	133.08	131.92	123.38	+ 0.88	+ 7.86
64 Plastic products	0.0536	119.25	119.17	115.02	+ 0.07	+ 3.68
65 Major tools & equipments	0.0084	128.73	128.40	118.31	+ 0.26	+ 8.81
66 Washing soap/detergents/match	1.4112	133.49	132.44	124.92	+ 0.79	+ 6.86
67 Household servant	0.7695	133.89	132.74	128.75	+ 0.87	+ 3.99
Health	2.3098	145.63	144.31	135.68	+ 0.91	+ 7.33
68 Drugs and medicines	1.0735	143.18	142.68	133.92	+ 0.35	+ 6.91
69 Therapeutic Appliances and Eq	0.0054	114.67	113.39	106.81	+ 1.13	+ 7.36
70 Doctor (MBBS) clinic fee	0.4044	184.48	179.85	160.79	+ 2.57	+ 14.73
71 Dental services	0.0156	121.66	121.35	115.47	+ 0.26	+ 5.36
72 Medical tests	0.2367	130.41	130.30	122.98	+ 0.08	+ 6.04
73 Hospitals services	0.5742	130.09	129.02	127.34	+ 0.83	+ 2.16
Transport	6.1368	140.58	140.06	142.96	+ 0.37	- 1.66
74 Motor vehicles	0.8097	149.33	149.05	145.23	+ 0.19	+ 2.82
75 Motor vehicle accessories	0.1941	133.70	132.52	123.67	+ 0.89	+ 8.11
76 Motor fuel	2.9088	146.32	146.18	157.58	+ 0.10	- 7.15
77 Mechanical services	0.4290	133.42	132.38	126.20	+ 0.79	+ 5.72
78 Motor vehicle tax	0.0482	126.72	126.72	126.72	+ 0.00	+ 0.00
79 Transport services	1.7470	129.86	128.79	124.29	+ 0.83	+ 4.48
Communication	2.3536	108.26	108.23	107.96	+ 0.03	+ 0.28
80 Postal services	0.0190	147.39	147.05	147.05	+ 0.23	+ 0.23
81 Communication apparatus	0.4524	118.91	118.77	117.36	+ 0.12	+ 1.32
82 Communication Services	1.8822	105.30	105.30	105.30	+ 0.00	+ 0.00
Recreation and culture	1.7301	120.33	120.03	116.89	+ 0.25	+ 2.94
83 Recreation and culture	0.6478	111.67	111.59	108.13	+ 0.07	+ 3.27
84 Text books	0.6655	120.00	119.49	117.03	+ 0.43	+ 2.54
85 Newspapers	0.0716	151.55	151.55	151.55	+ 0.00	+ 0.00
86 stationery	0.3452	130.77	130.38	125.87	+ 0.30	+ 3.89
Education	4.8807	146.16	145.49	144.43	+ 0.46	+ 1.20
87 Education	4.8807	146.16	145.49	144.43	+ 0.46	+ 1.20
Restaurants and hotels	7.4050	135.28	134.14	124.31	+ 0.85	+ 8.82
88 Readymade food	5.5235	135.80	134.48	124.12	+ 0.98	+ 9.41
89 Marriage Hall Charges	1.7514	135.29	134.64	125.79	+ 0.48	+ 7.55
90 Accommodation Services	0.1301	113.20	112.72	112.17	+ 0.43	+ 0.92
Misc. goods and services	4.7720	144.40	144.68	131.58	- 0.19	+ 9.74
91 Personal Grooming Services	0.8001	132.10	132.07	123.30	+ 0.02	+ 7.14
92 Electrical Appliances for Per	0.0465	118.37	118.32	116.52	+ 0.04	+ 1.59
93 Appliances/Articles/Products	2.9807	132.08	131.35	124.00	+ 0.56	+ 6.52
94 Personal Effects n.e.c.	0.9447	194.97	198.70	163.27	- 1.88	+ 19.42

Annexure B:CPI (Rural) Index Numbers by Commodity Groups & Commodities (2015-16=100)

Item and Specification	Weight	Index Numbers			% Change in Oct 2020 over			
		Oct 20	Sep 20	Oct 19	Sep 2020	Oct 2019		
General	100.0000	142.79	139.51	128.28	+	2.35	+	11.31
Food and non-alcoholic Beverage	40.8668	152.60	145.72	128.88	+	4.72	+	18.40
01 Wheat	3.4736	168.16	159.34	111.28	+	5.54	+	<u>51.11</u>
02 Wheat Flour	3.4297	147.45	142.77	113.92	+	3.28	+	29.43
03 Wheat Products	0.1068	145.56	141.22	116.62	+	3.07	+	24.82
04 Besan	0.0728	124.33	122.81	112.74	+	1.24	+	10.28
05 Rice	1.5501	183.46	180.94	155.57	+	1.39	+	17.93
06 Bakery and Confectionary	0.3702	138.06	134.85	117.85	+	2.38	+	17.15
07 Nimco	0.0774	124.69	123.24	115.02	+	1.18	+	8.41
08 Meat	1.7146	154.29	151.62	139.01	+	1.76	+	10.99
09 Chicken	1.4641	137.03	111.28	118.51	+	23.14	+	15.63
10 Fish	0.2640	123.40	120.53	125.03	+	2.38	-	1.30
11 Milk fresh	10.3803	130.69	129.90	121.37	+	0.61	+	7.68
12 Milk products	0.9624	129.06	128.35	123.38	+	0.55	+	4.60
13 Milk powder	0.1062	126.38	124.94	117.62	+	1.15	+	7.45
14 Eggs	0.5665	180.95	144.90	125.91	+	24.88	+	43.71
15 Butter	0.3333	136.07	134.44	122.26	+	1.21	+	11.30
16 Mustard oil	0.0136	135.16	131.97	120.55	+	2.42	+	12.12
17 Cooking oil	0.6011	153.99	151.76	134.98	+	1.47	+	14.08
18 Vegetable ghee	2.3764	160.01	158.23	136.41	+	1.12	+	17.30
19 Dry fruits	0.2496	146.24	142.36	128.12	+	2.73	+	14.14
20 Fresh fruits	1.4505	107.47	103.84	106.85	+	3.50	+	0.58
21 Pulse Masoor	0.2076	112.35	109.11	86.09	+	2.97	+	30.50
22 Pulse Moong	0.2510	155.98	160.66	112.22	-	2.91	+	38.99
23 Pulse Mash	0.1465	105.29	103.63	78.65	+	1.60	+	33.87
24 Pulse Gram	0.2751	119.79	118.10	110.43	+	1.43	+	8.48
25 Gram Whole	0.1116	116.37	114.77	117.16	+	1.39	-	0.67
26 Beans	0.0896	166.09	167.28	126.18	-	0.71	+	31.63
27 Potatoes	0.7437	295.64	286.88	183.61	+	3.05	+	<u>61.02</u>
28 Onions	0.8965	167.01	105.44	171.39	+	<u>58.39</u>	-	2.56
29 Tomatoes	0.5069	286.16	173.44	140.27	+	<u>64.99</u>	+	<u>104.01</u>
30 Fresh Vegetables	2.0947	176.81	169.91	195.44	+	4.06	-	9.53
31 Sugar	2.0296	160.50	153.02	120.34	+	4.89	+	33.37
32 Gur	0.1522	150.48	149.80	135.61	+	0.45	+	10.97
33 Honey	0.0296	129.03	125.88	119.70	+	2.50	+	7.79
34 Sweetmeat	0.3967	132.36	131.54	122.46	+	0.62	+	8.08
35 Ice Cream	0.0568	133.02	132.99	119.50	+	0.02	+	11.31
36 Condiments and Spices	1.4919	192.40	196.03	125.19	-	1.85	+	<u>53.69</u>
37 Dessert Preparation	0.0133	123.63	122.45	111.98	+	0.96	+	10.40
38 Tea	1.2566	137.95	137.95	135.91	+	0.00	+	1.50
39 Beverages	0.5537	129.61	129.40	122.07	+	0.16	+	6.18
Alcoholic Beverages, Tobacco	1.2786	134.65	134.39	127.34	+	0.19	+	5.74
40 Cigarettes	1.2364	133.32	133.08	126.61	+	0.18	+	5.30
41 Pan Prepared	0.0422	173.46	172.73	148.73	+	0.42	+	16.63
Clothing and footwear	9.4826	143.15	142.32	129.97	+	0.58	+	10.14
42 Cotton Cloth	2.8381	157.78	157.33	138.90	+	0.29	+	13.59
43 Woolen Cloth	1.0959	132.98	131.18	124.04	+	1.37	+	7.21
44 Readymade Garments	1.1345	136.25	135.67	128.14	+	0.43	+	6.33
45 Woolen Readymade Garments	0.5401	130.27	130.27	119.69	+	0.00	+	8.84
46 Tailoring	1.2999	139.63	139.34	131.65	+	0.21	+	6.06
47 Hosiry	0.4322	168.61	165.78	142.35	+	1.71	+	18.45
48 Dopatta	0.2078	135.79	135.09	122.31	+	0.52	+	11.02
49 Cleaning and Laundering	0.0176	141.54	140.30	118.36	+	0.88	+	19.58
50 Footware	1.9165	132.46	131.35	121.11	+	0.85	+	9.37
Housing, water, Elec., Gas an	18.4853	129.57	128.93	125.00	+	0.50	+	3.66
51 House Rent	8.6110	133.23	132.21	126.65	+	0.77	+	5.20
52 Construction Input Items	0.6306	125.75	123.13	118.04	+	2.13	+	6.53
53 Construction Wage Rates	0.2526	153.47	153.03	142.23	+	0.29	+	7.90
54 Water Supply	0.0645	213.67	213.67	154.00	+	0.00	+	38.75
55 Garbage Collection	0.0080	142.31	142.31	132.21	+	0.00	+	7.64
56 Electricity Charges	3.4431	117.04	119.83	126.90	-	2.33	-	7.77
57 Liquified Hydrocarbons	0.9994	121.04	117.92	135.76	+	2.65	-	10.84
58 Solid Fuel	4.4761	132.02	130.29	117.55	+	1.33	+	12.31
Furnishing and household equi	4.1031	135.45	134.49	123.02	+	0.71	+	10.10
59 Furniture and Furnishing	0.5786	139.74	138.86	123.58	+	0.63	+	13.08

Annexure B:CPI (Rural) Index Numbers by Commodity Groups & Commodities (2015-16=100)

Item and Specification	Weight	Index Numbers			% Change in Oct 2020 over	
		Oct 20	Sep 20	Oct 19	Sep 2020	Oct 2019
60 Household Textiles	0.4382	130.98	129.68	120.80	+ 1.00	+ 8.43
61 Household Equipments	1.2774	142.10	141.38	129.87	+ 0.51	+ 9.42
62 Plastic Products	0.0776	151.70	149.48	133.26	+ 1.49	+ 13.84
63 Major Tools and Equipments	0.0324	120.77	120.40	113.71	+ 0.31	+ 6.21
64 Washing Soaps, Detergents and	1.6989	129.67	128.66	117.95	+ 0.79	+ 9.94
Health	3.5141	145.21	144.60	134.07	+ 0.42	+ 8.31
65 Drugs and Medicines	1.5792	145.35	144.83	136.02	+ 0.36	+ 6.86
66 Doctor Clinic Fee	0.5128	174.25	172.49	150.76	+ 1.02	+ 15.58
67 Dental Services	0.0181	126.65	126.65	112.95	+ 0.00	+ 12.13
68 Medical Tests	0.3967	148.15	147.06	133.92	+ 0.74	+ 10.63
69 Hospitals Services	1.0073	129.38	129.38	122.95	+ 0.00	+ 5.23
Transport	5.5580	138.56	137.96	140.13	+ 0.43	- 1.12
70 Motor Vehicles	0.7305	129.20	129.19	126.59	+ 0.01	+ 2.06
71 Motor Vehicles Accessories	0.1572	138.50	137.63	131.49	+ 0.63	+ 5.33
72 Motor Fuels	2.4932	145.00	144.97	156.29	+ 0.02	- 7.22
73 Mechanical Services	0.3645	155.26	153.45	147.17	+ 1.18	+ 5.50
74 Motor Vehicle Tax	0.0174	127.98	127.98	127.98	+ 0.00	+ 0.00
75 Transport Services	1.7952	130.15	128.77	122.64	+ 1.07	+ 6.12
Communication	1.9940	104.91	104.84	104.53	+ 0.07	+ 0.36
76 Postal Services	0.0070	149.43	149.43	149.43	+ 0.00	+ 0.00
77 Communication Apparatus	0.3362	120.11	119.69	117.82	+ 0.35	+ 1.94
78 Communication Services	1.6508	101.63	101.63	101.63	+ 0.00	+ 0.00
Recreation and culture	1.3764	128.38	126.67	121.40	+ 1.35	+ 5.75
79 Recreation and Culture	0.4763	130.47	130.22	125.66	+ 0.19	+ 3.83
80 Text Books	0.5047	116.37	114.88	110.12	+ 1.30	+ 5.68
81 Newspapers	0.0230	165.56	161.68	161.68	+ 2.40	+ 2.40
82 Stationery	0.3724	139.68	135.94	128.77	+ 2.75	+ 8.47
Education	2.1342	135.26	134.08	132.50	+ 0.88	+ 2.08
83 Education	2.1342	135.26	134.08	132.50	+ 0.88	+ 2.08
Restaurants and hotels	6.1895	138.95	137.74	127.47	+ 0.88	+ 9.01
84 Readymade Food	3.8001	147.42	145.44	129.32	+ 1.36	+ 14.00
85 Marriage Hall Charges	2.2525	126.93	126.93	125.92	+ 0.00	+ 0.80
86 Accommodation Services	0.1369	101.62	101.59	101.59	+ 0.03	+ 0.03
Misc. goods and services	5.0174	148.83	148.03	130.20	+ 0.54	+ 14.31
87 Personal Grooming Services	1.5363	149.48	148.89	132.77	+ 0.40	+ 12.59
88 Appliances/Articles/Products	2.2746	126.45	125.33	115.83	+ 0.89	+ 9.17
89 Personal Effects n.e.c.	1.2065	190.20	189.74	154.03	+ 0.24	+ 23.48

Annexure C: Wholesale Price Indices by Major Groups & Commodities

(2015-16=100)

Item and Specification	Weight	Index Numbers			% Change in Oct 2020 over			
		Oct 20	Sep 20	Oct 19	Sep 2020	Oct 2019		
General	100.0000	150.70	146.48	143.34	+	2.88	+	5.13
Agriculture Forestry & Fisher	25.7674	157.36	146.54	139.75	+	7.38	+	12.60
001 Wheat	0.6297	170.77	157.07	109.79	+	8.72	+	<u>55.54</u>
002 Maize	0.6764	136.85	136.08	140.18	+	0.57	-	2.38
003 Rice	2.4413	163.59	163.01	143.66	+	0.36	+	13.87
004 Sorghum / Jowar	0.0214	212.60	191.65	165.75	+	10.93	+	28.27
005 Millet / Bajra	0.0374	137.30	128.41	126.78	+	6.92	+	8.30
006 Vegetables	1.2441	243.89	235.49	252.28	+	3.57	-	3.33
007 Fresh Fruits	1.5144	126.85	127.50	114.91	-	0.51	+	10.39
008 Dry Fruits	0.2478	129.43	129.09	123.96	+	0.26	+	4.41
009 Cotton Seeds	1.1511	138.85	132.90	120.93	+	4.48	+	14.82
010 Other Oil Seeds	0.0722	144.88	141.18	128.10	+	2.62	+	13.10
011 Edible Roots / Potatoes	0.2540	364.21	358.64	217.35	+	1.55	+	<u>67.57</u>
012 Stimulant & Spice Crops	0.1634	334.51	408.29	246.54	-	18.07	+	35.68
013 Pulses	0.4901	120.84	119.94	111.21	+	0.75	+	8.66
014 Sugar Crops	1.0725	129.98	129.46	112.02	+	0.40	+	16.03
015 Fibre Crops	5.3169	183.68	145.46	167.66	+	26.28	+	9.56
016 Unmanufactured Tobacco	0.0742	215.50	212.75	160.85	+	1.29	+	33.98
017 Poultry	0.5633	133.29	104.51	115.43	+	27.54	+	15.47
018 Raw Milk from Bovine Animals	7.0279	134.35	131.55	116.63	+	2.13	+	15.19
019 Eggs	0.5034	192.80	150.85	130.33	+	27.81	+	47.93
020 Raw Animal Materials / Wool	0.0351	105.50	105.50	105.17	+	0.00	+	0.31
021 Hides, Skins & Fur Skins, Raw	0.4834	29.45	29.67	33.09	-	0.74	-	11.00
022 Fuel Wood in Logs	0.0179	119.10	119.09	108.24	+	0.01	+	10.03
023 Fish Live Fresh or Chilled	1.7295	157.77	157.77	153.56	+	0.00	+	2.74
Ores/Minerals, Elec., Gas & W	12.0069	167.18	165.18	167.86	+	1.21	-	0.41
024 Coal not Agglomerated	0.7508	75.79	75.79	82.17	+	0.00	-	7.76
025 Natural Gas Liquified	5.7065	201.83	195.57	196.92	+	3.20	+	2.49
026 Salt & Pure Sodium Chloride	0.0584	168.70	168.63	145.71	+	0.04	+	15.78
027 Electrical Energy	5.4912	143.66	145.80	149.62	-	1.47	-	3.98
Food, Beverages, Tobacco, Textil	31.1122	145.35	141.57	128.49	+	2.67	+	13.12
Food Products, Beverages &	20.0718	145.92	140.17	123.72	+	4.10	+	17.94
028 Meat of Animals	3.4559	162.41	154.14	137.44	+	5.37	+	18.17
029 Vegetables & Fruit Juice	0.0058	114.40	113.10	115.77	+	1.15	-	1.18
030 Dried Fruits & Nuts	0.1733	162.88	160.39	151.04	+	1.55	+	7.84
031 Fruit Juices	0.3880	128.48	127.01	117.09	+	1.16	+	9.73
032 Vegetable Oils Refined	1.9242	129.14	125.92	118.71	+	2.56	+	8.79
033 Vegetable Ghee	1.5632	153.99	149.73	130.87	+	2.85	+	17.67
034 Oil Cakes	0.9611	152.68	145.33	126.41	+	5.06	+	20.78
035 Processed Liquid Milk	4.4437	142.36	135.42	122.72	+	5.12	+	16.00
036 Milk & Cream in Solid Form	0.0316	133.46	130.15	121.65	+	2.54	+	9.71
037 Ice Cream	0.0047	137.64	137.64	107.34	+	0.00	+	28.23
038 Dairy Products N.E.C	0.0117	135.85	135.29	126.90	+	0.41	+	7.05
039 Wheat Flour	2.3034	152.78	144.96	115.48	+	5.39	+	32.30
040 Other Cereal Flour	0.0604	119.74	120.07	110.99	-	0.27	+	7.88
041 Sugar Refined	1.7975	159.46	150.22	119.17	+	6.15	+	33.81
042 Chocolate	0.0139	88.54	81.72	81.57	+	8.35	+	8.54
043 Sugar Confectionary	0.0738	171.75	171.75	123.81	+	0.00	+	38.72
044 Coffee & Tea	0.7303	129.75	129.75	127.19	+	0.00	+	2.01
045 Spices	0.1449	251.35	250.14	140.58	+	0.48	+	<u>78.79</u>
046 Other Food Products	0.0336	117.51	117.51	110.00	+	0.00	+	6.83
047 Mineral Water	0.0207	125.24	125.24	122.05	+	0.00	+	2.61
048 Beverages	0.6303	128.65	128.26	123.97	+	0.30	+	3.78
049 Tobacco Products	1.2998	104.23	104.23	104.23	+	0.00	+	0.00
Textiles & Apparels	10.3289	146.05	145.84	138.92	+	0.14	+	5.13
050 Cotton Yarn	5.2491	164.84	164.84	162.19	+	0.00	+	1.63
051 Nylon Yarn	0.1719	95.24	95.24	95.24	+	0.00	+	0.00
052 Blended Yarn	0.1689	120.22	120.22	119.77	+	0.00	+	0.38
053 Woven Fabrics	0.0128	137.73	137.73	124.07	+	0.00	+	11.01
054 Cotton Fabrics	0.6343	150.71	150.25	109.12	+	0.31	+	38.11
055 Other Fabrics	1.1016	114.72	113.59	112.30	+	0.99	+	2.15
056 Silk & Reyon Fabrics	0.7350	130.35	129.92	117.41	+	0.33	+	11.02
057 Towels	0.1235	125.60	125.47	109.46	+	0.10	+	14.75
058 Blankets	0.0029	104.95	104.49	96.44	+	0.44	+	8.82
059 Bed Sheets	0.0913	120.48	119.63	112.64	+	0.71	+	6.96

Annexure C: Wholesale Price Indices by Major Groups & Commodities

(2015-16=100)

Item and Specification	Weight	Index Numbers			% Change in Oct 2020 over	
		Oct 20	Sep 20	Oct 19	Sep 2020	Oct 2019
060 Quilts	0.0019	110.26	109.35	108.19	+ 0.83	+ 1.91
061 Woolen Carpets	0.0383	137.01	137.01	137.01	+ 0.00	+ 0.00
062 Synthetic Carpets	0.0566	116.17	115.72	115.72	+ 0.39	+ 0.39
063 Hosiery Products	0.8832	123.20	123.09	113.01	+ 0.09	+ 9.02
064 Readymade Garments	1.0576	131.75	131.75	123.15	+ 0.00	+ 6.98
Leather Products	0.7115	118.88	118.88	111.94	+ 0.00	+ 6.20
065 Leather Without Hair	0.2973	108.00	108.00	105.65	+ 0.00	+ 2.22
066 Other Leather N.E.C	0.2567	111.77	111.77	111.77	+ 0.00	+ 0.00
067 Footwears	0.1575	151.00	151.00	124.07	+ 0.00	+ 21.71
Other Transportable Goods	22.3979	143.83	143.73	160.85	+ 0.07	- 10.58
068 Timber	0.0165	152.83	152.83	111.75	+ 0.00	+ 36.76
069 Printing Paper	0.4279	130.70	130.70	130.70	+ 0.00	+ 0.00
070 Hard Board	0.1579	146.50	146.50	146.50	+ 0.00	+ 0.00
071 Motor Spirit	1.6268	146.32	146.32	160.18	+ 0.00	- 8.65
072 Diesel Oil	5.4849	132.65	134.12	179.65	- 1.10	- 26.16
073 Kerosine Oil	0.2151	128.04	128.04	195.27	+ 0.00	- 34.43
074 Furnace Oil	3.2664	227.82	227.82	263.20	+ 0.00	- 13.44
075 Mobil Oil	0.7114	122.33	122.33	120.04	+ 0.00	+ 1.91
076 Chemicals	1.7720	133.14	132.84	127.51	+ 0.23	+ 4.42
077 Dyeing Material	0.1539	146.16	146.16	146.16	+ 0.00	+ 0.00
078 Fertilizers	2.8657	97.84	95.67	107.33	+ 2.27	- 8.84
079 Pesticides	0.2763	141.59	141.59	110.84	+ 0.00	+ 27.74
080 Insecticides	0.1276	111.49	111.49	111.24	+ 0.00	+ 0.22
081 Paints & Varnishes	0.1916	135.82	135.82	124.68	+ 0.00	+ 8.93
082 Medicines	1.1428	145.17	145.01	135.64	+ 0.11	+ 7.03
083 Soaps & Detergents	0.8168	110.94	110.00	109.62	+ 0.85	+ 1.20
084 Auto Tyres	0.2703	124.76	124.76	121.30	+ 0.00	+ 2.85
085 Plastic Products	0.4550	117.75	117.75	108.12	+ 0.00	+ 8.91
086 Glass sheets	0.2089	138.76	138.76	144.91	+ 0.00	- 4.24
087 Other Glass Articles	0.1635	149.95	149.95	132.20	+ 0.00	+ 13.43
088 Ceramics & Sanitary Fixture	0.0244	124.21	124.15	123.82	+ 0.05	+ 0.31
089 Bricks, Blocks & Tiles	0.1566	128.48	129.55	119.34	- 0.83	+ 7.66
090 Cement	1.8145	119.95	118.45	112.83	+ 1.27	+ 6.31
091 Bed Foam	0.0006	148.64	147.59	127.14	+ 0.71	+ 16.91
092 Matches	0.0505	1171.7	1171.7	1170.1	+ 0.00	+ 0.14
		5	5	1		
Metal Product, Machinery & Eq	8.7156	145.10	145.10	128.21	+ 0.00	+ 13.17
093 Steel Bar & Sheets	1.4615	159.41	160.01	155.90	- 0.37	+ 2.25
094 Pipe Fittings	0.0780	144.78	144.78	141.32	+ 0.00	+ 2.45
095 Steel Products	0.3879	134.16	134.16	133.18	+ 0.00	+ 0.74
096 Engines & Motors	0.0046	107.29	107.29	107.29	+ 0.00	+ 0.00
097 Vacuum Pumps	0.0155	107.56	107.56	107.56	+ 0.00	+ 0.00
098 Air Conditioners	0.0049	123.30	115.95	112.46	+ 6.34	+ 9.64
099 Cultivators	0.0551	103.75	103.75	87.11	+ 0.00	+ 19.10
100 Chuff Cutter	0.1293	110.00	110.00	104.29	+ 0.00	+ 5.48
101 Tractors	0.0028	129.36	129.36	109.22	+ 0.00	+ 18.44
102 Lathe Machines	0.0525	210.12	210.12	168.06	+ 0.00	+ 25.03
103 Concrete Mixture	0.0107	100.00	100.00	100.00	+ 0.00	+ 0.00
104 Fridge, WashM, SewM, Fans, Iron	1.1645	154.42	154.41	144.56	+ 0.01	+ 6.82
105 Electric Wires	0.0912	144.65	137.76	125.73	+ 5.00	+ 15.05
106 Lighting Equipments	1.4431	119.49	119.49	110.71	+ 0.00	+ 7.93
107 Radio & Television	0.1843	105.55	104.52	97.48	+ 0.99	+ 8.28
108 Motor Vehicles	0.0244	156.45	156.45	150.63	+ 0.00	+ 3.86
109 Motorcycles	0.2570	124.50	124.50	119.59	+ 0.00	+ 4.11
110 Bicycles	3.3483	153.05	153.05	120.58	+ 0.00	+ 26.93

