



Monthly Review on Price Indices



October, 2019
(Base Year 2015-16)

Government of Pakistan
Ministry of Planning, Development & Reform
Pakistan Bureau of Statistics
Islamabad

Inflation in Brief

1. CPI inflation General, increased by 11.0% on year-on-year basis in October 2019 as compared to an increase of 11.4% in the previous month and 6.5% in October 2018. On month-on-month basis, it increased by 1.8% in October 2019 as compared to an increase of 0.8% in the previous month and 2.1% in October 2018.
2. CPI inflation Urban, increased by 10.9% on year-on-year basis in October 2019 as compared to an increase of 11.6% in the previous month and 7.0% in October 2018. On month-on-month basis, it increased by 1.6% in October 2019 as compared to an increase of 0.7% in the previous month and an increase of 2.2% in October 2018.
3. CPI inflation Rural, increased by 11.3% on year-on-year basis in October 2019 as compared to an increase of 11.1% in the previous month and 5.7% in October 2018. On month-on-month basis, it increased by 2.2% in October 2019 as compared to an increase of 0.8% in the previous month and an increase of 2.0% in October 2018.
4. SPI inflation on YoY increased by 15.1% in October 2019 as compared to an increase of 14.7% a month earlier and an increase of 1.7% in October 2018. On MoM basis, it increased by 2.7% in October 2019 as compared to an increase of 1.9% a month earlier and an increase of 2.3% in October 2018.
5. WPI inflation on YoY basis increased by 13.2% in October 2019 as compared to an increase of 15.9% a month earlier and an increase of 18.6% in October 2018. WPI inflation on MoM basis increased by 2.0% in October 2019 as compared to an increase of 0.1% a month earlier and an increase of 4.4% in corresponding month of last year i.e. October 2018.
6. Figures 1.a and 1.b show graphically the data of Table 1. Table 1.1 shows "Period Average" and "YoY" percent changes in indices of three years.

Table 1.a General Inflation (%) (Base 2015-16)																		
PERIOD	CPI														SPI**		WPI	
	General						Food				Non-Food							
	National		Urban		Rural		Urban		Rural		Urban		Rural		YoY	MoM	YoY	MoM
	YoY	MoM	YoY	MoM	YoY	MoM	YoY	MoM	YoY	MoM	YoY	MoM	YoY	MoM				
Sep-18	5.4	0.0	5.6	-0.1	5.1	0.0	1.5	-0.8	1.5	-0.3	8.0	0.3	8.1	0.3	0.4	-0.4	14.6	-1.5
Oct-18	6.5	2.1	7.0	2.2	5.7	2.0	3.0	2.6	2.5	3.0	9.4	2.0	8.4	1.1	1.7	2.3	18.6	4.4
Nov-18	5.7	-0.1	6.3	-0.1	4.7	-0.2	1.7	-0.2	0.9	-0.7	9.0	0.0	8.0	0.3	0.8	-0.7	18.6	1.0
Dec-18	5.4	-0.3	5.9	-0.3	4.6	-0.3	0.6	-1.8	0.5	-1.4	9.0	0.5	8.1	0.6	1.5	-0.3	16.5	-1.3
Jan-19	5.6	0.3	6.2	0.4	4.6	0.0	2.6	0.3	1.8	0.0	8.2	0.5	7.0	0.0	3.4	0.4	12.6	-0.8
Feb-19	6.8	0.9	7.2	0.9	6.0	0.9	5.9	2.3	5.2	1.7	8.0	0.1	6.7	0.2	7.2	2.4	13.9	1.6
Mar-19	8.6	2.0	8.9	1.9	8.2	2.2	8.8	2.5	9.3	3.3	9.0	1.5	7.3	1.3	10.5	2.1	16.6	2.2
Apr-19	8.3	0.7	8.4	0.8	8.1	0.6	8.3	1.3	9.3	0.6	8.4	0.6	7.2	0.6	10.0	0.5	17.1	1.8
May-19	8.4	0.6	8.5	0.7	8.3	0.5	9.0	1.3	9.7	0.6	8.3	0.3	7.1	0.4	9.9	0.6	16.5	1.5
Jun-19	8.0	0.5	8.1	0.3	7.9	0.7	7.5	-0.3	9.1	0.7	8.4	0.7	7.0	0.7	9.3	0.9	14.0	0.2
Jul-19	8.4	1.8	8.7	2.0	7.9	1.6	7.9	1.0	9.3	1.7	9.2	2.5	6.7	1.5	8.9	1.0	13.3	3.1
Aug-19	10.5	1.6	10.6	1.5	10.3	1.9	11.9	3.1	12.6	2.9	9.9	0.5	8.4	1.1	12.1	2.7	14.1	1.2
Sep-19	11.4	0.8	11.6	0.7	11.1	0.8	15.0	2.0	15.0	1.8	9.7	0.0	8.0	0.0	14.7	1.9	15.9	0.1
Oct-19	11.0	1.8	10.9	1.6	11.3	2.2	13.7	1.4	14.6	2.6	9.3	1.7	8.7	1.8	15.1	2.7	13.2	2.0

** SPI for quintile 1. Digits 0.0* are due to rounding off.

7. Core inflation measured by non-food non-energy Urban CPI (Core NFNE) increased by 7.7% on (YoY) basis in October 2019 as compared to an increase of 8.4% in the previous month and 7.5% in October 2018. On (MoM) basis, it increased by 0.5% in October 2019 as compared to increase of 0.4% in previous month, and an increase of 1.2% in corresponding month of last year i.e. October 2018.
8. Core inflation measured by non-food non-energy Rural CPI (Core NFNE) increased by 8.6% on (YoY) basis in October 2019 as compared to an increase of 8.8% in the previous month and 6.7% in October 2018. On (MoM) basis, it increased by 0.7% in October 2019 as compared to an increase of 0.3% in previous month, and an increase of 1.0% in corresponding month of last year i.e. October 2018.
9. Core inflation, measured by 20% weighted trimmed mean Urban CPI (Core Trimmed) increased by 8.9% on (YoY) basis in October 2019 as compared to 9.3% in the previous month and by 7.1% in October 2018. On (MoM) basis, it increased by 0.5% in October 2019 as compared to an increase of 0.6% in the previous month and an increase of 1.1% in corresponding month of last year i.e. October 2018.

10. Core inflation, measured by 20% weighted trimmed mean Rural CPI (Core Trimmed) increased by 9.4% on (YoY) basis in October 2019 as compared to 9.6% in the previous month and by 6.7% in October 2018. On (MoM) basis, it increased by 0.7% in October 2019 as compared to an increase of 0.6% in the previous month and an increase of 0.9% in corresponding month of last year i.e. October 2018.

Table 1.b Core Inflation (%) (Base 2015-16)

Period	NFNE				Trimmed			
	Urban		Rural		Urban		Rural	
	YoY	MoM	YoY	MoM	YoY	MoM	YoY	MoM
Sep-18	7.0	0.4	6.7	0.3	5.8	0.2	6.0	0.2
Oct-18	7.5	1.2	6.7	1.0	7.1	1.1	6.7	0.9
Nov-18	7.7	0.4	7.1	0.7	6.7	0.3	6.3	0.5
Dec-18	7.8	0.4	7.4	0.5	6.8	0.3	6.6	0.4
Jan-19	7.1	0.7	6.6	0.2	6.7	0.6	6.1	0.4
Feb-19	7.1	0.2	6.4	0.2	6.7	0.2	6.2	0.3
Mar-19	7.2	0.8	6.5	0.6	7.3	0.8	6.5	0.6
Apr-19	7.0	1.1	6.8	1.2	7.4	1.1	7.3	0.8
May-19	7.2	0.5	6.8	0.4	7.3	0.5	7.2	0.5
Jun-19	7.3	0.2	6.7	0.3	7.3	0.4	7.2	0.7
Jul-19	8.2	1.8	7.8	2.0	7.8	1.4	7.4	1.6
Aug-19	8.5	0.4	8.8	1.0	8.5	0.6	8.7	1.2
Sep-19	8.4	0.4	8.8	0.3	9.3	0.6	9.6	0.6
Oct-19	7.7	0.5	8.6	0.7	8.9	0.5	9.4	0.7

Table 1.1 Period Average and YoY % Change

INDEX	Average July- October % changes			October over October % changes		
	2019-2020	2018-2019	2017-2018	2019-2020	2018-2019	2017-2018
CPI (National)	10.32	6.19	4.43	11.04	6.50	4.83
CPI(Urban)	10.45	6.39	4.96	10.86	7.04	5.27
CPI(Rural)	10.14	5.88	3.64	11.33	5.67	4.17
SPI	12.70	2.30	2.97	15.11	1.73	4.61
WPI	14.10	16.58	2.58	13.22	18.64	3.70

Figure 1: UCPI Inflation YoY, Special Indices

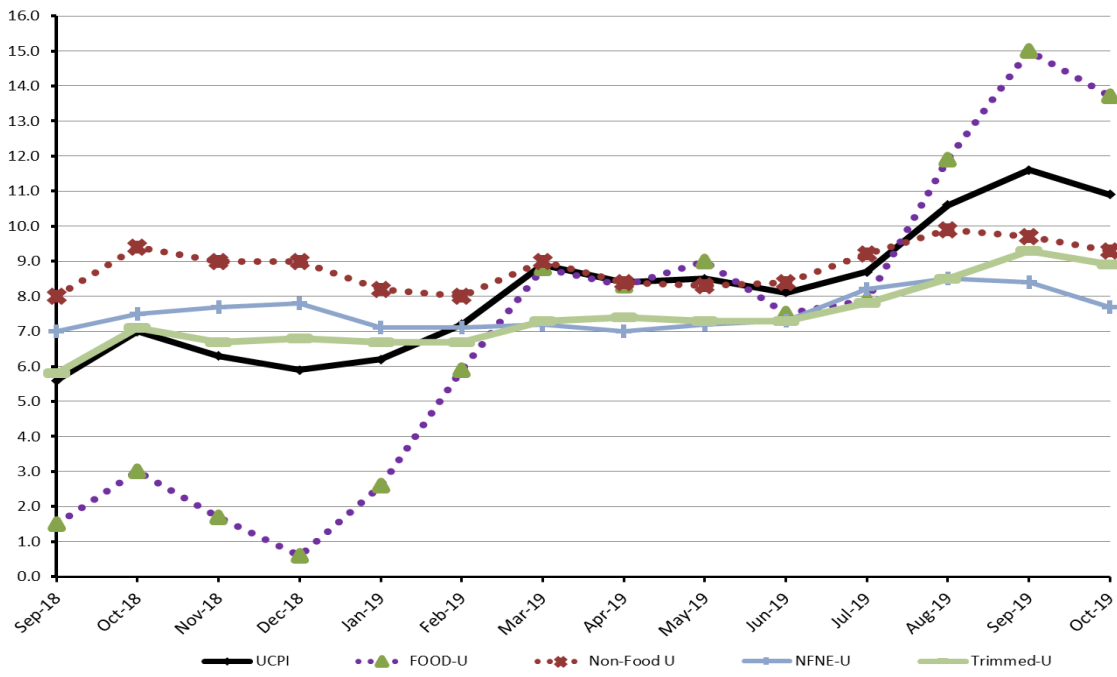


Figure 2: RCPI Inflation YoY, Special Indices

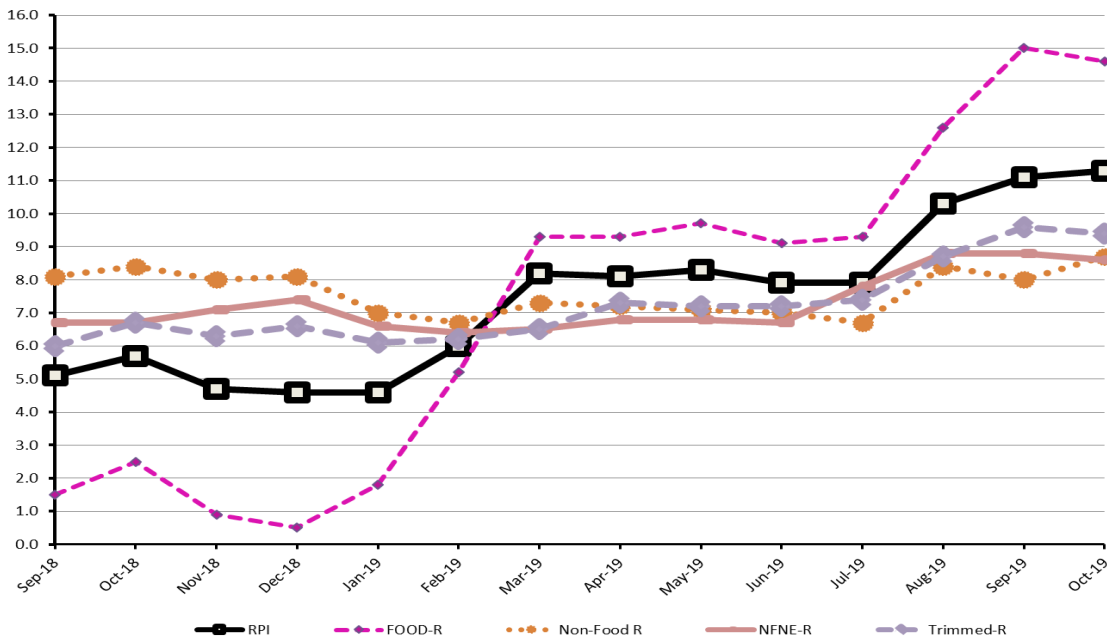


Figure 3: UCPI Inflation MoM, Special Indices

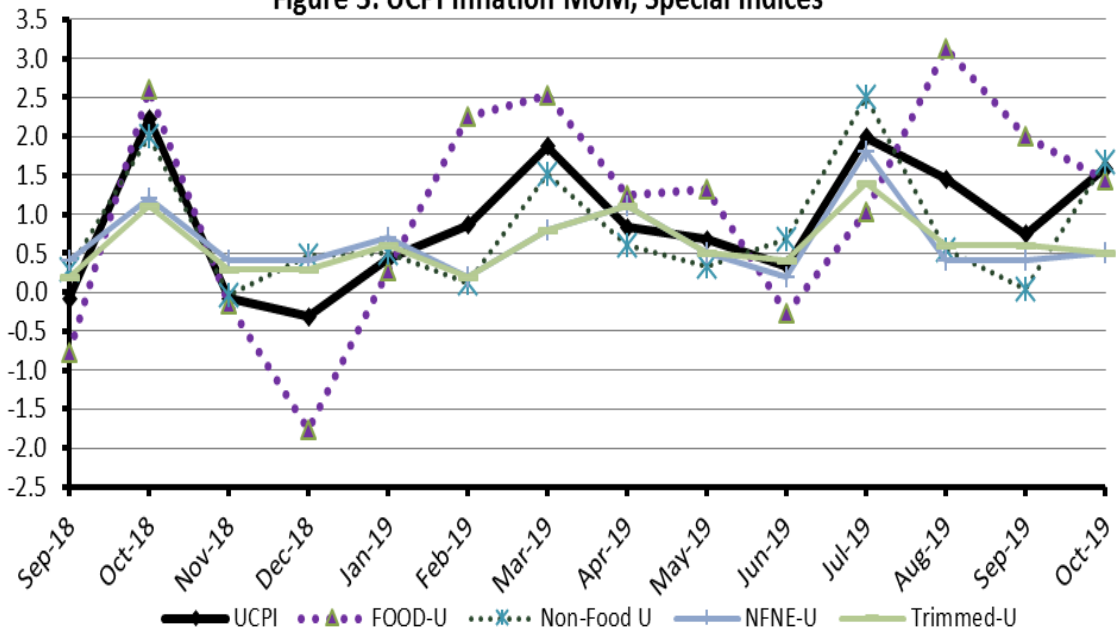


Figure 4: RPI Inflation MoM, Special Indices

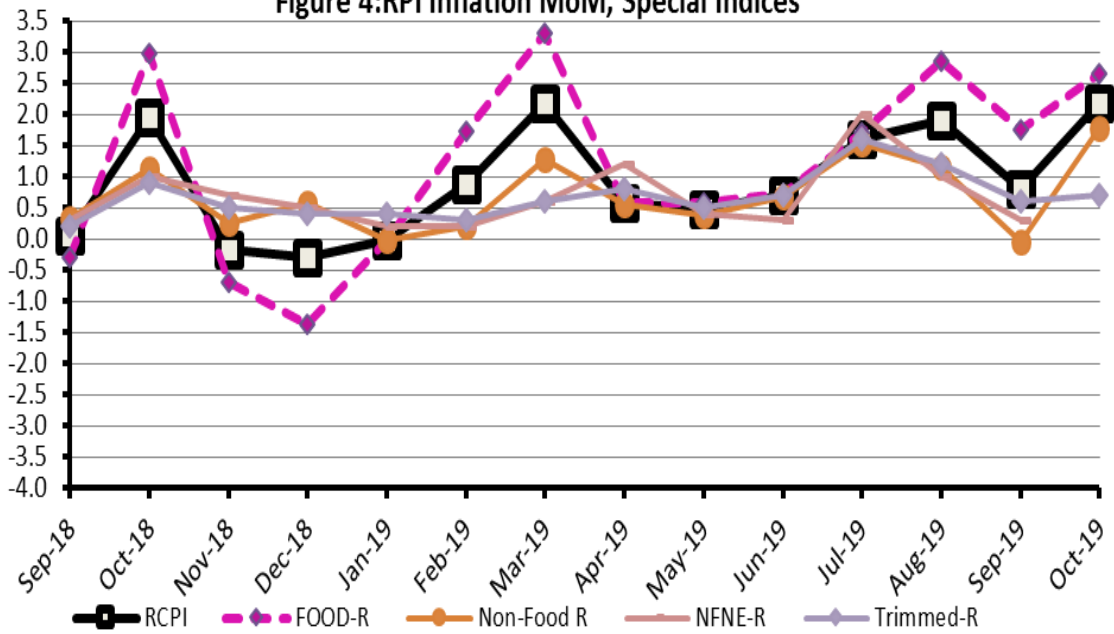


Figure 5: CPI Y.o.Y (National, Urban, Rural)

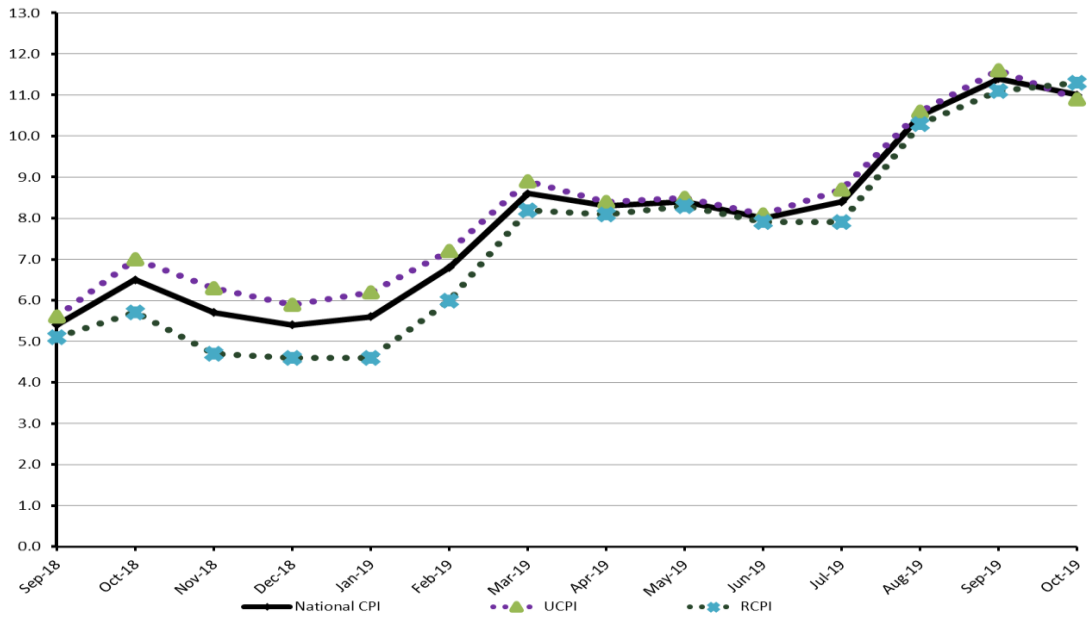
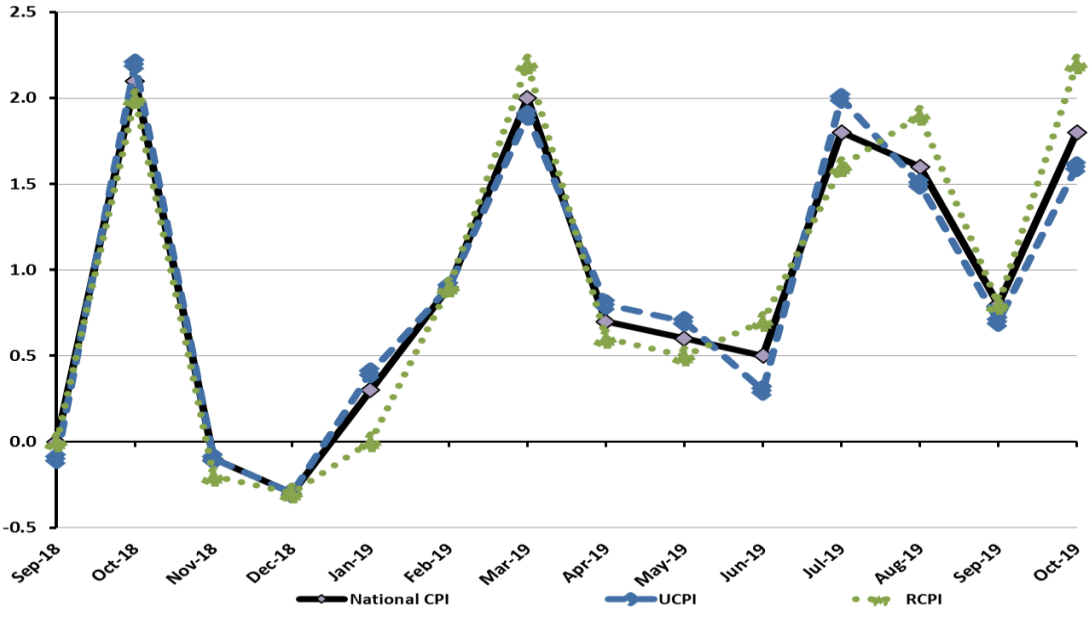


Figure 6: CPI M.o.M (National, Urban, Rural)



I. National Consumer Price Index (N-CPI)

The National Consumer Price Index of October 2019, is increased by 1.82% over September 2019 and increased by 11.04% over corresponding month of the last year i.e. October 2018.

Table 1 : Consumer Price Index (National) by Group of Commodities and Services (Base 2015-16)

No	Group	Group Weight (%)	Indices			% Change October 2019 Over		Impact (In % points) Oct 2019 Over	
			Oct 2019	Sep 2019	Oct 2018	Sep 2019	Oct 2018	Sep 2019	Oct 2018
	General	100.00	129.16	126.86	116.32	1.82	11.04	1.82	11.04
1.	Food & Non-alcoholic Bev.	34.58	128.46	125.63	111.68	2.26	15.03	0.77	4.99
	Non-perishable Food Items	29.60	122.77	122.76	110.27	0.01	11.34	0.00	3.18
	Perishable Food Items	4.99	162.24	142.62	120.03	13.76	35.17	0.77	1.81
2.	Alcoholic Bev. & Tobacco	1.02	134.97	134.51	112.16	0.34	20.34	0.00	0.20
3.	Clothing & Footwear	8.60	126.72	126.01	115.92	0.56	9.32	0.05	0.80
4.	Housing, Water, Electricity, Gas & Fuels	23.63	129.38	124.82	120.72	3.65	7.18	0.85	1.76
5.	Furnishing & Household Equipment Maintenance	4.10	123.99	123.03	111.42	0.78	11.28	0.03	0.44
6.	Health	2.79	134.87	133.45	120.26	1.07	12.15	0.03	0.35
7.	Transport	5.91	141.90	141.44	121.85	0.33	16.45	0.02	1.02
8.	Communication	2.21	106.73	106.70	102.61	0.02	4.01	0.00	0.08
9.	Recreation & Culture	1.59	118.45	117.69	110.24	0.64	7.44	0.01	0.11
10.	Education	3.79	141.75	141.54	133.70	0.15	6.02	0.01	0.26
11.	Restaurants & Hotels	6.92	125.44	125.10	118.32	0.27	6.01	0.02	0.42
12.	Miscellaneous	4.87	131.01	130.22	116.47	0.61	12.49	0.03	0.61

II. Urban Consumer Price Index (UCPI)

The Urban Consumer Price Index of October 2019, is increased by 1.59% over September 2019 and increased by 10.86% over corresponding month of the last year i.e. October 2018.

Table 2 : Consumer Price Index (Urban) by Group of Commodities and Services (Base 2015-16)

No	Group	Group Weight (%)	Indices			% Change October 2019 Over		Impact (In % points) Oct 2019 Over	
			Oct 2019	Sep 2019	Oct 2018	Sep 2019	Oct 2018	Sep 2019	Oct 2018
	General	100.00	129.75	127.72	117.04	1.59	10.86	1.59	10.86
1.	Food & Non-alcoholic Bev.	30.42	128.09	125.97	111.37	1.68	15.01	0.50	4.35
	Non-perishable Food Items	25.97	122.40	122.58	110.13	-0.15	11.14	-0.04	2.72
	Perishable Food Items	4.46	161.24	145.72	118.62	10.65	35.93	0.54	1.62
2.	Alcoholic Bev.& Tobacco	0.85	142.53	142.24	120.24	0.20	18.54	0.00	0.16
3.	Clothing & Footwear	8.01	124.17	123.86	113.87	0.25	9.05	0.02	0.70
4.	Housing, Water, Electricity, Gas & Fuels	27.03	131.37	126.98	121.40	3.46	8.21	0.93	2.30
5.	Furnishing & Household Equipment Maintenance	4.09	124.64	123.78	111.73	0.69	11.55	0.03	0.45
6.	Health	2.31	135.68	134.58	121.98	0.82	11.23	0.02	0.27
7.	Transport	6.14	142.96	142.32	121.68	0.45	17.49	0.03	1.12
8.	Communication	2.35	107.96	107.88	102.66	0.07	5.16	0.00	0.11
9.	Recreation & Culture	1.73	116.89	116.63	109.57	0.22	6.68	0.00	0.11
10.	Education	4.88	144.43	144.16	135.99	0.19	6.21	0.01	0.35
11.	Restaurants & Hotels	7.41	124.31	124.01	118.51	0.24	4.89	0.02	0.37
12.	Miscellaneous	4.77	131.58	130.90	117.46	0.52	12.02	0.03	0.58

Main contributors to month-on-month and year-on-year percentage changes are given below and detail is given in Annexure A.

1. MONTH-ON-MONTH Top few commodities which varied from previous month are given below: -

Food Items Increased: Tomatoes(34.97%), Eggs (19.74%), Fresh vegetables(17.69%), Potatoes(10.08%), Onions(4.98%), Beans(2.53%), Fish(2%), Dry fruits(1.86%), Milk powder (1.79%), Besan (1.28%), Wheat(1.22%), Meat(1.17%), Pulse masoor (1.04%), and Gur (1.0%).

Decreased: Chicken (18.17%), Fresh fruits(1.39%) and Sugar(1.37%).

Non-food Items Increased: Electricity charges(18.4%), Liquefied Hydrocarbons(16.65%), Water supply(7.34%), Furniture and furnishing(1.65%), Transport services(1.42%), Drugs and medicines(1.42%), Medical tests(1.41%), Construction wage rates(1.05%) and stationery(1.02%).

2. YEAR-ON-YEAR: Top few commodities which varied from previous year i.e. October 2018 are given below:-

Food Items Increased: Onions(131.08%), Pulse moong (45.47%), Potatoes(45%), Fresh vegetables(39.44%), Sugar(34.64%), Pulse mash(31.03%), Gur(27.46%), Cigarettes (24.55%), Cooking oil(18.4%), Vegetable ghee(17.76%), Tea(17.38%), Pulse masoor(14.47%), Meat(13.54%), Fish(13.21%), Milk powder (12.21%), Wheat flour (11.49%), Pulse gram(10.82%), and Beans(10.72%).

Decreased: Chicken (2.02%).

Non-food Items Increased: Gas charges(54.84%), Motor fuel(20.7%), Motor vehicles(18.61%), Motor vehicle accessories(17.97%), Construction input items(17.4%), Drugs and medicines(16.59%), Doctor (MBBS) clinic fee(15.26%), Cotton cloth(14%), Cotton cloth(13.87%), Transport services(12.21%), Transport services(11.48%). Construction wage rates (10.48%), Electricity charges (10.44%) and stationery (10.32%).

Decreased: Liquefied Hydrocarbons (5.58%).

III. Rural Consumer Price Index (RCPI)

The Rural Consumer Price Index of October 2019, is increased by 2.17% over September 2019 and increased by 11.33% over corresponding month of the last year i.e. October 2018.

Table 3 : Consumer Price Index (Rural) by Group of Commodities and Services (Base 2015-16)

No	Group	Group Weight (%)	Indices			% Change October 2019 Over		Impact (In % points) Oct 2019 Over	
			Oct 2019	Sep 2019	Oct 2018	Sep 2019	Oct 2018	Sep 2019	Oct 2018
	General	100.00	128.28	125.55	115.23	2.17	11.33	2.17	11.33
1.	Food & Non-alcoholic Bev.	40.87	128.88	125.24	112.02	2.91	15.05	1.19	5.98
	Non-perishable Food Items	35.08	123.19	122.96	110.42	0.19	11.56	0.06	3.89
	Perishable Food Items	5.79	163.41	139.01	121.67	17.55	34.31	1.12	2.10
2.	Alcoholic Bev.& Tobacco	1.28	127.34	126.72	104.01	0.49	22.43	0.01	0.26
3.	Clothing & Footwear	9.48	129.97	128.76	118.53	0.94	9.65	0.09	0.94
4.	Housing, Water, Electricity, Gas & Fuels	18.49	125.00	120.06	119.21	4.11	4.86	0.73	0.93
5.	Furnishing & Household Equipment Maintenance	4.10	123.02	121.91	110.96	0.91	10.87	0.04	0.43
6.	Health	3.51	134.07	132.33	118.55	1.31	13.09	0.05	0.47
7.	Transport	5.56	140.13	139.97	122.14	0.11	14.73	0.01	0.87
8.	Communication	1.99	104.53	104.60	102.53	-0.07	1.95	0.00	0.03
9.	Recreation & Culture	1.38	121.40	119.71	111.52	1.41	8.86	0.02	0.12
10.	Education	2.13	132.50	132.50	125.80	0.00	5.33	0.00	0.12
11.	Restaurants & Hotels	6.19	127.47	127.06	117.98	0.32	8.04	0.02	0.51
12.	Miscellaneous	5.02	130.20	129.24	115.04	0.74	13.18	0.04	0.66

Main contributors to month-on-month and year-on-year percentage changes are given below and detail is given in Annexure A.

1. **MONTH-ON-MONTH** Top few commodities which varied from previous month are given below: -

Food Items Increased: Fresh Vegetables(36.73%), Tomatoes(27.07%), Eggs(15.76%), Potatoes(9.62%), Onions(3.63%), Pulse Mash(3.13%), Fish(2.69%), Beans(2.6%), Gur(2.21%), Pulse Gram(2.17%), Dry fruits(1.55%), Milk powder(1.35%), Wheat(1.35%), Vegetable ghee(1.19%), Tea(1.15%), Wheat Flour(1.13%) and Rice(1.03%).

Decreased: Chicken(14.14%), Sugar(1.47%) and Fresh fruits(1.06%).

Non-food Items Increased: Electricity Charges (18.4%), Liquefied Hydrocarbons (10.57%), Construction Input Items (3.27%), Woolen Cloth (2.15%), Motor Vehicles Accessories (2.11%), Doctor Clinic Fee (1.91%), Stationery (1.43%), Cotton Cloth(1.37%) and Construction Wage Rates(1.24%).

2. **YEAR-ON-YEAR:** Top few commodities which varied from previous year i.e. October 2018 are given below:-

Food Items Increased: Onions(122.47%), Pulse Moong(48.26%), Gur(43.32%), Potatoes(42.2%), Sugar(36.16%), Fresh Vegetables(34.67%), Pulse Mash(29.85%), Cigarettes(23.22%), Cooking oil(20.83%), Fish(19.41%), Vegetable ghee(17.1%), Milk powder(16.4%), Tea(15.89%), Wheat Flour(12.93%), Pulse Masoor(12.54%), Pulse Gram(12.35%), Meat(11.81%) and Condiments and Spices(11.06%).

Decreased: Tomatoes (6.93%).

Non-food Items Increased: Motor Fuels (20.97%), Doctor Clinic Fee (19.33%), Motor Vehicles Accessories (19.07%), Motor Vehicles (16.49%), Drugs and Medicines (15.68%), Medical Tests (13.18%), Cotton Cloth (11.63%), Construction Wage Rates (11.03%), Electricity Charges (10.44%) and Woolen Cloth (10.32%).

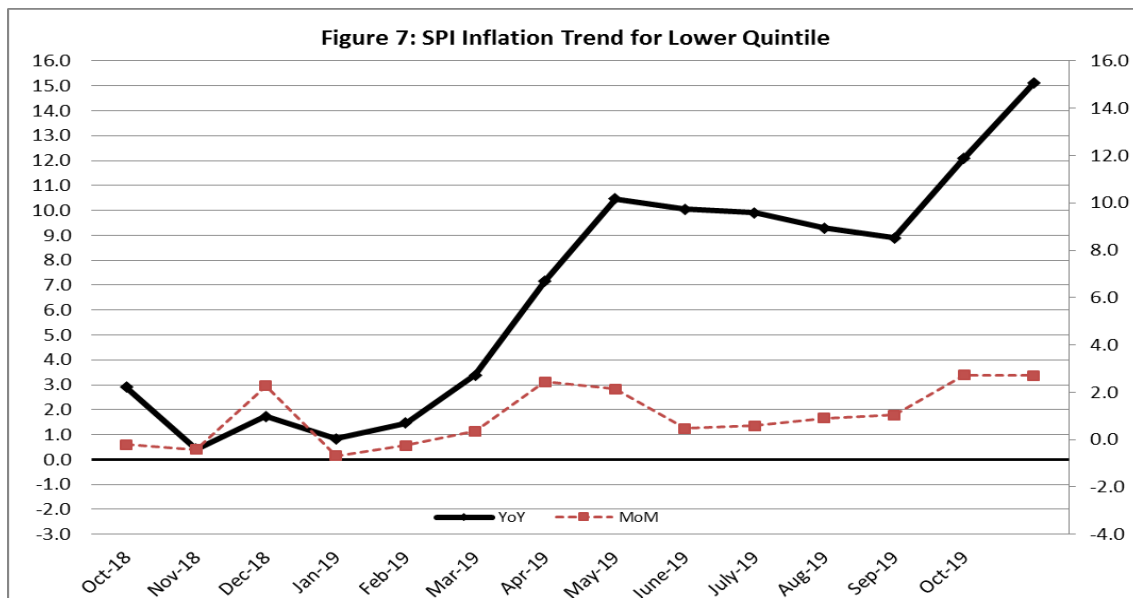
Decreased: Liquefied Hydrocarbons(3.63%).

IV. Sensitive Price Indicator

Quintile-wise percentage changes YoY and MoM are given below in Table 3. The series from October 2018 to October 2019 is also graphed below in Figure 3.

Table 4: Sensitive Price Indicator (Base 2015-16)					
Quintiles	Indices			% Change October 2019 Over	
	October 2019	September 2019	October 2018	September 2019	October 2018
1	131.93	128.51	114.61	2.66	15.11
2	127.55	124.12	110.53	2.76	15.40
3	129.56	126.70	109.14	2.26	18.71
4	126.81	124.38	107.27	1.95	18.22
5	130.36	127.78	111.94	2.02	16.46
Combined	128.50	125.72	110.53	2.21	16.26

Table 4.1 : Weekly Percentage Change of SPI During October-19					
Quintiles	% Change with Previous week				
	03-10-2019	10-10-2019	17-10-2019	24-10-2019	31-10-2019
Quintile 1	0.41	-0.31	2.48	0.35	0.65
Combined	0.18	-0.44	2.36	0.18	0.52



V. Wholesale Price Index

The Wholesale Price Index for October, 2019 increased by 1.99% over September 2019. It increased by 13.22% over the corresponding month of the last year. YoY and MoM movements, from September, 2018 to October, 2019 are also graphed below in Figure 4.

Table 5 : Wholesale Price Index by Group of Commodities (Base 2015-16)

No.	Group	Group Weight (%)	Indices			% Change October 2019 Over		Impact (In % points) Oct 2019 Over	
			Oct 2019	Sep 2019	Oct 2018	Sep 2019	Oct 2018	Sep 2019	Oct 2018
	General	100.00	143.28	140.49	126.55	1.99	13.22	1.99	13.22
1.	Agriculture, Forestry & Fishery Products	25.77	139.50	135.04	121.83	3.30	14.50	0.82	3.60
2.	Ores & Minerals, Electricity, Gas & Water	12.01	167.86	159.04	133.42	5.55	25.81	0.75	3.27
3.	Food Products, Beverages & Tobacco, Textiles, Apparel & Leather Products	31.11	128.49	127.57	115.80	0.72	10.96	0.20	3.12
	i. Food Products, Bev. & Tobacco	20.07	123.72	122.77	110.19	0.77	12.28	0.14	2.15
	ii. Textiles and Apparel	10.33	138.92	138.10	127.35	0.59	9.09	0.06	0.94
	iii. Leather Products	0.71	111.94	110.18	106.70	1.60	4.91	0.01	0.03
4.	Other Transportable Goods except Metal Products, Machinery & Equipment	22.40	160.85	159.38	147.72	0.92	8.89	0.23	2.32
5.	Metal Products, Machinery & Equipment	8.72	128.21	128.66	115.04	-0.35	11.45	-0.03	0.91

Main contributors to month-on-month and year-on-year percentage changes are given below and detail is given in Annexure B.

- MONTH-ON-MONTH** Top few commodities which varied from previous month i.e. September, 2019 are given below: -

Increased: Eggs(23.68%), Vegetables(16.46%), Electrical Energy(13.96%), Woolen Carpets(9.23%), Synthetic Carpets(9.21%), Hides, Skins & Fur Skins, Raw(9.06%), Bed Foam(7.35%), Bed Sheets(5.53%), Edible Roots / Potatoes(5.04%), Fish Live Fresh or Chilled(4.7%), Pipe Fittings(4.32%), Quilts(3.35%), Furnace Oil(3.34%), Mineral Water(3.15%), Pulses(3.1%), Towels(2.87%), Silk & Reyon Fabrics(2.86%), Vegetables & Fruit Juice(2.78%), Raw Milk from Bovine Animals(2.43%), Wheat Flour(2.22%), Hosiery Products(1.88%), Meat of Animals(1.62%), Glass sheets(1.43%), Chuff Cutter(1.39%), Medicines(1.28%), Wheat (1.28%), Dried Fruits & Nuts(1.14%), Fertilizers(1.12%).

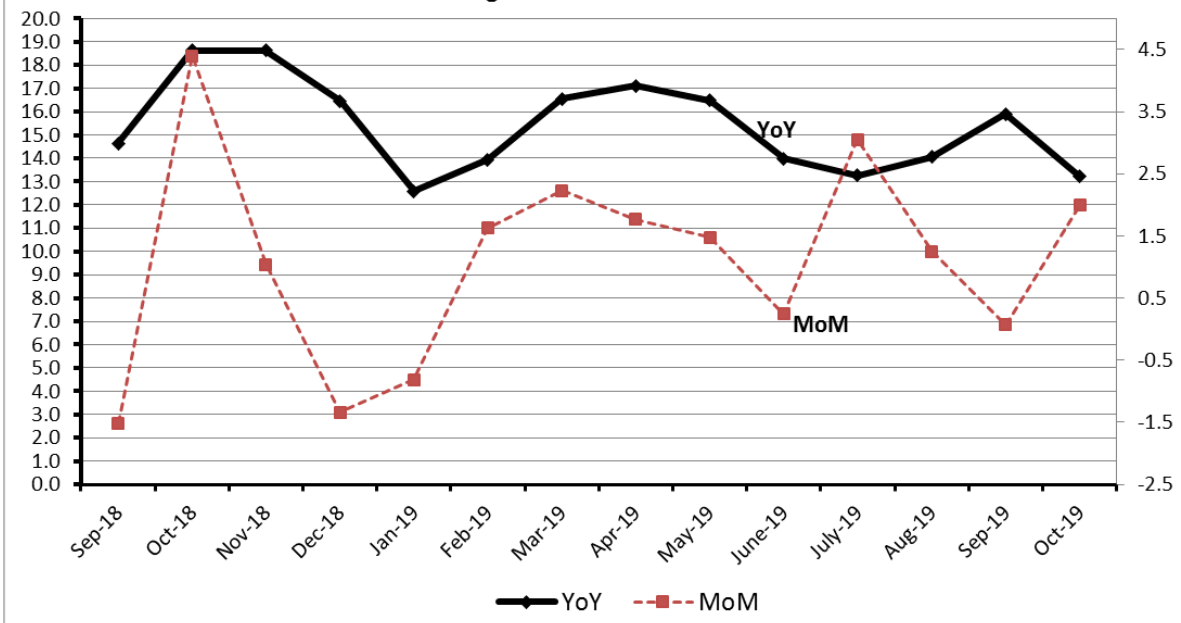
Decreased: Poultry(19.54%), Fresh Fruits(6.31%), Maize(5.33%), Steel Bar & Sheets(2.43%), Sorghum / Jowar(2.24%), Blended Yarn(1.88%), Chemicals(1.22%).

- YEAR-ON-YEAR** Top few commodities which varied from previous year i.e. October, 2018 are given below: -

Increased: Stimulant & Spice Crops(72.24%), Vegetables(70.23%), Edible Roots / Potatoes(65.54%), Sorghum / Jowar(63.46%), Sugar Refined(35.56%), Natural Gas Liquefied(28.35%), Sugar Crops(27.27%), Cotton Seeds(25.86%), Motor Spirit(22.68%), Motor Vehicles(22.65%), Diesel Oil(20.37%), Kerosene Oil(19.24%), Milk & Cream in Solid Form(19.08%), Fertilizers(18.62%), Steel Bar & Sheets(17.95%), Vegetable Ghee(17.7%), Medicines(16.57%), Readymade Garments(15.5%), Pulses(14.9%), Rice(14.33%), Printing Paper(14.02%), Fish Live Fresh or Chilled(13.82%), Synthetic Carpets(13.62%), Silk & Reyon Fabrics(13.55%), Sugar Confectionary(13.25%), Wheat Flour(12.73%), Vegetable Oils Refined(12.52%), Steel Products(12.2%), Coffee & Tea(11.88%), Glass sheets(11.78%), Maize(11.71%), Oil Cakes(11.48%), Woolen Carpets(11.4%), Dried Fruits & Nuts(11.31%), Mobil Oil(11.04%), Meat of Animals(10.85%), Cotton Yarn(10.42%), Other Glass Articles(10.23%), Unmanufactured Tobacco(10.23%), Ceramics & Sanitary Fixture(10.15%), Motorcycles(10.04%)

Decreased: Hides, Skins & Fur Skins, Raw(20.74%), Millet / Bajra(8.53%), and Furnace Oil(6.97%).

Figure 8: WPI Inflation



Annexure A:CPI (Urban) Index Numbers by Commodity Groups & Commodities (2015-16=100)

Item and Specification	Weight	Index Numbers			% Change in Oct 2019 over	
		Oct 19	Sep 19	Oct 18	Sep 2019	Oct 2018
General	100.0000	129.75	127.72	117.04	+ 1.59	+ 10.86
Food and non-alcoholic Bevera	30.4215	128.09	125.97	111.37	+ 1.68	+ 15.01
01 Wheat	0.6120	111.48	110.14	102.32	+ 1.22	+ 8.95
02 Wheat flour	3.0075	113.59	113.19	101.88	+ 0.35	+ 11.49
03 Wheat products	0.0936	114.87	113.03	104.04	+ 1.63	+ 10.41
04 Besan	0.0830	111.15	109.74	101.76	+ 1.28	+ 9.23
05 Rice	1.1804	128.37	127.78	122.73	+ 0.46	+ 4.60
06 Bakery and confectionary	0.4770	120.53	120.07	107.26	+ 0.38	+ 12.37
07 Nimco	0.1224	116.71	115.67	109.13	+ 0.90	+ 6.95
08 Meat	2.0411	139.33	137.72	122.71	+ 1.17	+ 13.54
09 Chicken	1.3631	113.96	139.26	116.31	- 18.17	- 2.02
10 Fish	0.3855	123.42	121.00	109.02	+ 2.00	+ 13.21
11 Milk fresh	7.1070	118.51	117.63	109.95	+ 0.75	+ 7.79
12 Milk products	0.6407	123.45	122.55	113.07	+ 0.73	+ 9.18
13 Milk powder	0.3106	123.09	120.92	109.70	+ 1.79	+ 12.21
14 Eggs	0.5083	131.87	110.13	126.76	+ 19.74	+ 4.03
15 Butter	0.0932	141.34	139.46	110.71	+ 1.35	+ 27.67
16 Mustard oil	0.0120	112.04	111.34	105.48	+ 0.63	+ 6.22
17 Cooking oil	1.1016	128.66	128.25	108.67	+ 0.32	+ 18.40
18 Vegetable ghee	1.0324	128.59	128.23	109.20	+ 0.28	+ 17.76
19 Dry fruits	0.3299	120.22	118.02	109.04	+ 1.86	+ 10.25
20 Fresh fruits	1.4363	109.83	111.38	104.23	- 1.39	+ 5.37
21 Pulse masoor	0.1624	87.51	86.61	76.45	+ 1.04	+ 14.47
22 Pulse moong	0.1697	107.01	106.47	73.56	+ 0.51	+ 45.47
23 Pulse mash	0.1152	76.35	76.01	58.27	+ 0.45	+ 31.03
24 Pulse gram	0.1660	108.91	108.32	98.28	+ 0.54	+ 10.82
25 Gram whohe	0.0912	118.96	118.10	117.16	+ 0.73	+ 1.54
26 Beans	0.0408	114.21	111.39	103.15	+ 2.53	+ 10.72
27 Potatoes	0.4496	178.60	162.25	123.17	+ 10.08	+ 45.00
28 Onions	0.5928	187.20	178.32	81.01	+ 4.98	+ <u>131.0</u>
29 Tomatoes	0.3459	172.83	128.05	160.40	+ 34.97	+ 7.75
30 Fresh vegetables	1.5306	187.27	159.12	134.30	+ 17.69	+ 39.44
31 Sugar	1.1130	118.66	120.31	88.13	- 1.37	+ 34.64
32 Gur	0.0379	126.50	125.25	99.25	+ 1.00	+ 27.46
33 Honey	0.1017	116.04	115.65	108.39	+ 0.34	+ 7.06
34 Sweetmeat	0.3535	134.50	134.30	121.40	+ 0.15	+ 10.79
35 Ice cream	0.1044	123.33	122.31	109.79	+ 0.83	+ 12.33
36 Condiments and Spices	1.3340	142.81	141.84	120.88	+ 0.68	+ 18.14
37 Dessert preparation	0.0419	115.02	112.76	105.71	+ 2.00	+ 8.81
38 Tea	0.8427	140.05	138.85	119.31	+ 0.86	+ 17.38
39 Beverages	0.8906	121.60	120.77	109.59	+ 0.69	+ 10.96
Alcoholic Beverages, Tobacco	0.8540	142.53	142.24	120.24	+ 0.20	+ 18.54
40 Cigarettes	0.7167	134.58	134.41	108.05	+ 0.13	+ 24.55
41 Pan prepared	0.1373	184.05	183.12	183.91	+ 0.51	+ 0.08
Clothing and footwear	8.0096	124.17	123.86	113.87	+ 0.25	+ 9.05
42 Cotton cloth	2.2227	126.13	125.93	110.64	+ 0.16	+ 14.00
43 Woolen cloth	0.8361	115.92	115.36	108.28	+ 0.49	+ 7.06
44 Readymade garments	1.3196	126.76	126.24	120.65	+ 0.41	+ 5.06
45 Woolen readymade garments	0.4307	116.29	115.98	108.68	+ 0.27	+ 7.00
46 Tailoring	1.0741	130.52	130.09	124.64	+ 0.33	+ 4.72
47 Hosiry	0.4070	124.05	123.72	116.71	+ 0.27	+ 6.29
48 Dopatta	0.1713	115.58	115.36	109.91	+ 0.19	+ 5.16
49 Cleaning and laundring	0.0665	127.78	126.74	117.26	+ 0.82	+ 8.97
50 Footware	1.4816	122.11	122.09	109.07	+ 0.02	+ 11.96
Housing, water, Elec., Gas an	27.0332	131.37	126.98	121.40	+ 3.46	+ 8.21
51 House rent	19.2558	127.29	126.65	121.21	+ 0.51	+ 5.02
52 Construcion input items	0.3765	138.84	137.95	118.26	+ 0.65	+ 17.40
53 Construction wage rates	0.2025	144.18	142.68	130.50	+ 1.05	+ 10.48
54 Water supply	0.5269	131.54	122.55	119.08	+ 7.34	+ 10.46
55 Garbage collection	0.1064	145.54	145.54	143.43	+ 0.00	+ 1.47
56 Electricity charges	4.5562	126.90	107.18	114.90	+ 18.40	+ 10.44
57 Gas charges	1.0807	216.94	216.94	140.11	+ 0.00	+ <u>54.84</u>

Annexure A:CPI (Urban) Index Numbers by Commodity Groups & Commodities (2015-16=100)

Item and Specification	Weight	Index Numbers			% Change in Oct 2019 over	
		Oct 19	Sep 19	Oct 18	Sep 2019	Oct 2018
58 Liquified Hydrocarbons	0.5064	148.23	127.07	156.99	+ 16.65	- 5.58
59 Solid Fuel	0.4218	109.67	109.22	105.68	+ 0.41	+ 3.78
<i>Furnishing and household equi</i>	4.0937	124.64	123.78	111.73	+ 0.69	+ 11.55
60 Furniture and furnishing	0.4750	122.94	120.94	113.26	+ 1.65	+ 8.55
61 Carpets	0.0308	107.59	107.34	104.53	+ 0.23	+ 2.93
62 Household textiles	0.3420	123.48	122.73	115.31	+ 0.61	+ 7.09
63 Household equipments	1.0032	123.38	123.08	112.30	+ 0.24	+ 9.87
64 Plastic products	0.0536	115.02	114.78	110.31	+ 0.21	+ 4.27
65 Major tools & equipments	0.0084	118.31	118.29	112.73	+ 0.02	+ 4.95
66 Washing soap/detergents/match	1.4112	124.92	123.58	110.19	+ 1.08	+ 13.37
67 Household servant	0.7695	128.75	128.63	111.66	+ 0.09	+ 15.31
<i>Health</i>	2.3098	135.68	134.58	121.98	+ 0.82	+ 11.23
68 Drugs and medicines	1.0735	133.92	132.04	114.86	+ 1.42	+ 16.59
69 Therapeutic Appliances and Eq	0.0054	106.81	106.62	106.49	+ 0.18	+ 0.30
70 Doctor (MBBS) clinic fee	0.4044	160.79	160.75	139.50	+ 0.02	+ 15.26
71 Dental services	0.0156	115.47	115.43	116.89	+ 0.03	- 1.21
72 Medical tests	0.2367	122.98	121.27	116.88	+ 1.41	+ 5.22
73 Hospitals services	0.5742	127.34	127.14	125.34	+ 0.16	+ 1.60
<i>Transport</i>	6.1368	142.96	142.32	121.68	+ 0.45	+ 17.49
74 Motor vehicles	0.8097	145.23	145.22	122.44	+ 0.01	+ 18.61
75 Motor vehicle accessories	0.1941	123.67	122.59	104.83	+ 0.88	+ 17.97
76 Motor fuel	2.9088	157.58	157.35	130.56	+ 0.15	+ 20.70
77 Mechanical services	0.4290	126.20	126.04	112.68	+ 0.13	+ 12.00
78 Motor vehicle tax	0.0482	126.72	126.72	115.63	+ 0.00	+ 9.59
79 Transport services	1.7470	124.29	122.55	110.77	+ 1.42	+ 12.21
<i>Communication</i>	2.3536	107.96	107.88	102.66	+ 0.07	+ 5.16
80 Postal services	0.0190	147.05	147.05	147.05	+ 0.00	+ 0.00
81 Communication apparatus	0.4524	117.36	116.98	107.21	+ 0.32	+ 9.47
82 Communication Services	1.8822	105.30	105.30	101.11	+ 0.00	+ 4.14
<i>Recreation and culture</i>	1.7301	116.89	116.63	109.57	+ 0.22	+ 6.68
83 Recreation and culture	0.6478	108.13	108.10	106.61	+ 0.03	+ 1.43
84 Text books	0.6655	117.03	117.03	106.20	+ 0.00	+ 10.20
85 Newspapers	0.0716	151.55	151.55	145.89	+ 0.00	+ 3.88
86 stationery	0.3452	125.87	124.60	114.10	+ 1.02	+ 10.32
<i>Education</i>	4.8807	144.43	144.16	135.99	+ 0.19	+ 6.21
87 Education	4.8807	144.43	144.16	135.99	+ 0.19	+ 6.21
<i>Restaurants and hotels</i>	7.4050	124.31	124.01	118.51	+ 0.24	+ 4.89
88 Readymade food	5.5235	124.12	123.72	116.89	+ 0.32	+ 6.19
89 Marriage Hall Charges	1.7514	125.79	125.79	124.12	+ 0.00	+ 1.35
90 Accommodation Services	0.1301	112.17	112.11	111.87	+ 0.05	+ 0.27
<i>Misc. goods and services</i>	4.7720	131.58	130.90	117.46	+ 0.52	+ 12.02
91 Personal Grooming Services	0.8001	123.30	122.93	115.26	+ 0.30	+ 6.98
92 Electrical Appliances for Per	0.0465	116.52	115.76	113.93	+ 0.66	+ 2.27
93 Appliances/Articles/Products	2.9807	124.00	122.96	112.45	+ 0.85	+ 10.27
94 Personal Effects n.e.c.	0.9447	163.27	163.46	135.33	- 0.12	+ 20.65

Annexure B:CPI (Rural) Index Numbers by Commodity Groups & Commodities (2015-16=100)

Item and Specification	Weight	Index Numbers			% Change in Oct 2019 over	
		Oct 19	Sep 19	Oct 18	Sep 2019	Oct 2018
General	100.0000	128.28	125.55	115.23	+ 2.17	+ 11.33
Food and non-alcoholic Bevera	40.8668	128.88	125.24	112.02	+ 2.91	+ 15.05
01 Wheat	3.4736	111.28	109.80	101.90	+ 1.35	+ 9.21
02 Wheat Flour	3.4297	113.92	112.65	100.88	+ 1.13	+ 12.93
03 Wheat Products	0.1068	116.62	115.01	110.61	+ 1.40	+ 5.43
04 Besan	0.0728	112.74	112.23	107.28	+ 0.45	+ 5.09
05 Rice	1.5501	155.57	153.98	142.66	+ 1.03	+ 9.05
06 Bakery and Confectionary	0.3702	117.85	117.18	108.64	+ 0.57	+ 8.48
07 Nimco	0.0774	115.02	114.42	107.36	+ 0.52	+ 7.13
08 Meat	1.7146	139.01	138.59	124.33	+ 0.30	+ 11.81
09 Chicken	1.4641	118.51	138.02	111.91	- 14.14	+ 5.90
10 Fish	0.2640	125.03	121.76	104.71	+ 2.69	+ 19.41
11 Milk fresh	10.3803	121.37	120.96	112.77	+ 0.34	+ 7.63
12 Milk products	0.9624	123.38	122.76	114.41	+ 0.51	+ 7.84
13 Milk powder	0.1062	117.62	116.05	101.05	+ 1.35	+ 16.40
14 Eggs	0.5665	125.91	108.77	124.71	+ 15.76	+ 0.96
15 Butter	0.3333	122.26	121.46	113.48	+ 0.66	+ 7.74
16 Mustard oil	0.0136	120.55	119.43	110.55	+ 0.94	+ 9.05
17 Cooking oil	0.6011	134.98	133.66	111.71	+ 0.99	+ 20.83
18 Vegetable ghee	2.3764	136.41	134.81	116.49	+ 1.19	+ 17.10
19 Dry fruits	0.2496	128.12	126.17	120.50	+ 1.55	+ 6.32
20 Fresh fruits	1.4505	106.85	108.00	100.12	- 1.06	+ 6.72
21 Pulse Masoor	0.2076	86.09	85.74	76.50	+ 0.41	+ 12.54
22 Pulse Moong	0.2510	112.22	111.26	75.69	+ 0.86	+ 48.26
23 Pulse Mash	0.1465	78.65	76.26	60.57	+ 3.13	+ 29.85
24 Pulse Gram	0.2751	110.43	108.08	98.29	+ 2.17	+ 12.35
25 Gram Whole	0.1116	117.16	116.23	116.37	+ 0.80	+ 0.68
26 Beans	0.0896	126.18	122.98	113.65	+ 2.60	+ 11.03
27 Potatoes	0.7437	183.61	167.49	129.12	+ 9.62	+ 42.20
28 Onions	0.8965	171.39	165.39	77.04	+ 3.63	+ 122.4
29 Tomatoes	0.5069	140.27	110.39	150.71	+ 27.07	- 6.93
30 Fresh Vegetables	2.0947	195.44	142.94	145.13	+ 36.73	+ 34.67
31 Sugar	2.0296	120.34	122.14	88.38	- 1.47	+ 36.16
32 Gur	0.1522	135.61	132.68	94.62	+ 2.21	+ 43.32
33 Honey	0.0296	119.70	119.02	112.75	+ 0.57	+ 6.16
34 Sweetmeat	0.3967	122.46	121.23	110.27	+ 1.01	+ 11.05
35 Ice Cream	0.0568	119.50	119.16	110.07	+ 0.29	+ 8.57
36 Condiments and Spices	1.4919	125.19	124.22	112.72	+ 0.78	+ 11.06
37 Dessert Preparation	0.0133	111.98	111.15	104.90	+ 0.75	+ 6.75
38 Tea	1.2566	135.91	134.36	117.28	+ 1.15	+ 15.89
39 Beverages	0.5537	122.07	121.73	107.68	+ 0.28	+ 13.36
Alcoholic Beverages, Tobacco	1.2786	127.34	126.72	104.01	+ 0.49	+ 22.43
40 Cigarettes	1.2364	126.61	126.02	102.75	+ 0.47	+ 23.22
41 Pan Prepared	0.0422	148.73	147.22	141.17	+ 1.03	+ 5.36
Clothing and footwear	9.4826	129.97	128.76	118.53	+ 0.94	+ 9.65
42 Cotton Cloth	2.8381	138.90	137.02	124.43	+ 1.37	+ 11.63
43 Woolen Cloth	1.0959	124.04	121.43	112.44	+ 2.15	+ 10.32
44 Readymade Garments	1.1345	128.14	126.80	114.39	+ 1.06	+ 12.02
45 Woolen Readymade Garments	0.5401	119.69	119.69	117.46	+ 0.00	+ 1.90
46 Tailoring	1.2999	131.65	131.38	124.26	+ 0.21	+ 5.95
47 Hosiry	0.4322	142.35	141.28	122.80	+ 0.76	+ 15.92
48 Dopatta	0.2078	122.31	121.32	112.26	+ 0.82	+ 8.95
49 Cleaning and Laundering	0.0176	118.36	118.36	112.35	+ 0.00	+ 5.35
50 Footware	1.9165	121.11	120.72	111.93	+ 0.32	+ 8.20
Housing, water, Elec., Gas an	18.4853	125.00	120.06	119.21	+ 4.11	+ 4.86
51 House Rent	8.6110	126.65	125.99	121.66	+ 0.52	+ 4.10
52 Construction Input Items	0.6306	118.04	114.30	114.52	+ 3.27	+ 3.07
53 Construction Wage Rates	0.2526	142.23	140.49	128.10	+ 1.24	+ 11.03
54 Water Supply	0.0645	154.00	154.00	121.10	+ 0.00	+ 27.17
55 Garbage Collection	0.0080	132.21	132.21	130.71	+ 0.00	+ 1.15
56 Electricity Charges	3.4431	126.90	107.18	114.90	+ 18.40	+ 10.44
57 Liquified Hydrocarbons	0.9994	135.76	122.78	140.88	+ 10.57	- 3.63

Annexure B:CPI (Rural) Index Numbers by Commodity Groups & Commodities (2015-16=100)

Item and Specification	Weight	Index Numbers			% Change in Oct 2019 over	
		Oct 19	Sep 19	Oct 18	Sep 2019	Oct 2018
58 Solid Fuel	4.4761	117.55	117.10	113.09	+ 0.38	+ 3.94
<i>Furnishing and household equi</i>	4.1031	123.02	121.91	110.96	+ 0.91	+ 10.87
59 Furniture and Furnishing	0.5786	123.58	122.70	113.18	+ 0.72	+ 9.19
60 Household Textiles	0.4382	120.80	119.42	111.92	+ 1.16	+ 7.93
61 Household Equipments	1.2774	129.87	129.23	115.74	+ 0.50	+ 12.21
62 Plastic Products	0.0776	133.26	132.36	120.02	+ 0.68	+ 11.03
63 Major Tools and Equipments	0.0324	113.71	113.51	111.10	+ 0.18	+ 2.35
64 Washing Soaps, Detergents and	1.6989	117.95	116.46	105.95	+ 1.28	+ 11.33
<i>Health</i>	3.5141	134.07	132.33	118.55	+ 1.31	+ 13.09
65 Drugs and Medicines	1.5792	136.02	133.08	117.58	+ 2.21	+ 15.68
66 Doctor Clinic Fee	0.5128	150.76	147.94	126.34	+ 1.91	+ 19.33
67 Dental Services	0.0181	112.95	112.95	108.60	+ 0.00	+ 4.01
68 Medical Tests	0.3967	133.92	133.92	118.33	+ 0.00	+ 13.18
69 Hospitals Services	1.0073	122.95	122.95	116.38	+ 0.00	+ 5.65
<i>Transport</i>	5.5580	140.13	139.97	122.14	+ 0.11	+ 14.73
70 Motor Vehicles	0.7305	126.59	126.34	108.67	+ 0.20	+ 16.49
71 Motor Vehicles Accessories	0.1572	131.49	128.77	110.43	+ 2.11	+ 19.07
72 Motor Fuels	2.4932	156.29	156.23	129.20	+ 0.04	+ 20.97
73 Mechanical Services	0.3645	147.17	146.72	141.08	+ 0.31	+ 4.32
74 Motor Vehicle Tax	0.0174	127.98	127.98	108.58	+ 0.00	+ 17.87
75 Transport Services	1.7952	122.64	122.66	115.13	- 0.02	+ 6.52
<i>Communication</i>	1.9940	104.53	104.60	102.53	- 0.07	+ 1.95
76 Postal Services	0.0070	149.43	149.43	113.66	+ 0.00	+ 31.47
77 Communication Apparatus	0.3362	117.82	118.27	112.38	- 0.38	+ 4.84
78 Communication Services	1.6508	101.63	101.63	100.47	+ 0.00	+ 1.15
<i>Recreation and culture</i>	1.3764	121.40	119.71	111.52	+ 1.41	+ 8.86
79 Recreation and Culture	0.4763	125.66	122.19	112.37	+ 2.84	+ 11.83
80 Text Books	0.5047	110.12	110.12	102.04	+ 0.00	+ 7.92
81 Newspapers	0.0230	161.68	161.68	161.68	+ 0.00	+ 0.00
82 Stationery	0.3724	128.77	126.95	120.18	+ 1.43	+ 7.15
<i>Education</i>	2.1342	132.50	132.50	125.80	+ 0.00	+ 5.33
83 Education	2.1342	132.50	132.50	125.80	+ 0.00	+ 5.33
<i>Restaurants and hotels</i>	6.1895	127.47	127.06	117.98	+ 0.32	+ 8.04
84 Readymade Food	3.8001	129.32	128.65	120.08	+ 0.52	+ 7.69
85 Marriage Hall Charges	2.2525	125.92	125.92	115.44	+ 0.00	+ 9.08
86 Accommodation Services	0.1369	101.59	101.59	101.59	+ 0.00	+ 0.00
<i>Misc. goods and services</i>	5.0174	130.20	129.24	115.04	+ 0.74	+ 13.18
87 Personal Grooming Services	1.5363	132.77	130.04	119.36	+ 2.10	+ 11.23
88 Appliances/Articles/Products	2.2746	115.83	115.28	108.14	+ 0.48	+ 7.11
89 Personal Effects n.e.c.	1.2065	154.03	154.52	122.55	- 0.32	+ 25.69

Annexure C: Wholesale Price Indices by Major Groups & Commodities

(2015-16=100)

Item and Specification	Weight	Index Numbers			% Change in Oct 2019 over			
		Oct 19	Sep 19	Oct 18	Sep 2019	Oct 2018		
General	100.0000	143.28	140.49	126.55	+	1.99	+	13.22
Agriculture Forestry & Fisher	25.7674	139.50	135.04	121.83	+	3.30	+	14.50
001 Wheat	0.6297	109.79	108.40	100.16	+	1.28	+	9.61
002 Maize	0.6764	130.67	138.03	116.97	-	5.33	+	11.71
003 Rice	2.4413	143.66	143.31	125.65	+	0.24	+	14.33
004 Sorghum / Jowar	0.0214	165.75	169.55	101.40	-	2.24	+	63.46
005 Millet / Bajra	0.0374	126.78	133.92	138.61	-	5.33	-	8.53
006 Vegetables	1.2441	252.28	216.62	148.20	+	16.46	+	70.23
007 Fresh Fruits	1.5144	114.91	122.65	104.93	-	6.31	+	9.51
008 Dry Fruits	0.2478	123.96	123.84	118.21	+	0.10	+	4.86
009 Cotton Seeds	1.1511	120.93	121.38	96.08	-	0.37	+	25.86
010 Other Oil Seeds	0.0722	128.10	126.90	117.58	+	0.95	+	8.95
011 Edible Roots / Potatoes	0.2540	217.35	206.92	131.30	+	5.04	+	65.54
012 Stimulant & Spice Crops	0.1634	246.54	234.74	143.14	+	5.03	+	72.24
013 Pulses	0.4901	111.21	107.87	96.79	+	3.10	+	14.90
014 Sugar Crops	1.0725	112.02	112.02	88.02	+	0.00	+	27.27
015 Fibre Crops	5.3169	167.66	158.16	157.00	+	6.01	+	6.79
016 Unmanufactured Tobacco	0.0742	160.85	159.77	145.92	+	0.68	+	10.23
017 Poultry	0.5633	115.43	143.46	113.78	-	19.54	+	1.45
018 Raw Milk from Bovine Animals	7.0279	116.63	113.86	108.47	+	2.43	+	7.52
019 Eggs	0.5034	130.33	105.38	122.97	+	23.68	+	5.99
020 Raw Animal Materials / Wool	0.0351	105.17	105.11	100.80	+	0.06	+	4.34
021 Hides, Skins & Fur Skins, Raw	0.4834	33.09	30.34	41.75	+	9.06	-	20.74
022 Fuel Wood in Logs	0.0179	108.24	107.76	103.32	+	0.45	+	4.76
023 Fish Live Fresh or Chilled	1.7295	153.56	146.66	134.92	+	4.70	+	13.82
Ores/Minerals, Elec., Gas & W	12.0069	167.86	159.04	133.42	+	5.55	+	25.81
024 Coal not Agglomerated	0.7508	82.17	82.17	82.17	+	0.00	+	0.00
025 Natural Gas Liquified	5.7065	196.92	195.99	153.43	+	0.47	+	28.35
026 Salt & Pure Sodium Chloride	0.0584	145.71	145.71	127.69	+	0.00	+	14.11
027 Electrical Energy	5.4912	149.62	131.29	119.69	+	13.96	+	25.01
Food, Beverages, Tobacco, Textil	31.1122	128.49	127.57	115.80	+	0.72	+	10.96
Food Products, Beverages &	20.0718	123.72	122.77	110.19	+	0.77	+	12.28
028 Meat of Animals	3.4559	137.44	135.25	123.99	+	1.62	+	10.85
029 Vegetables & Fruit Juice	0.0058	115.77	112.64	118.14	+	2.78	-	2.01
030 Dried Fruits & Nuts	0.1733	151.04	149.34	135.69	+	1.14	+	11.31
031 Fruit Juices	0.3880	117.09	116.92	107.86	+	0.15	+	8.56
032 Vegetable Oils Refined	1.9242	118.71	117.91	105.50	+	0.68	+	12.52
033 Vegetable Ghee	1.5632	130.87	129.92	111.19	+	0.73	+	17.70
034 Oil Cakes	0.9611	126.41	127.16	113.39	-	0.59	+	11.48
035 Processed Liquid Milk	4.4437	122.72	121.85	113.23	+	0.71	+	8.38
036 Milk & Cream in Solid Form	0.0316	121.65	121.39	102.16	+	0.21	+	19.08
037 Ice Cream	0.0047	107.34	107.34	106.00	+	0.00	+	1.26
038 Dairy Products N.E.C	0.0117	126.90	126.19	110.82	+	0.56	+	14.51
039 Wheat Flour	2.3034	115.48	112.97	102.44	+	2.22	+	12.73
040 Other Cereal Flour	0.0604	110.99	110.30	98.55	+	0.63	+	12.62
041 Sugar Refined	1.7975	119.17	120.10	87.91	-	0.77	+	35.56
042 Chocolate	0.0139	81.57	81.57	101.37	+	0.00	-	19.53
043 Sugar Confectionary	0.0738	123.81	123.81	109.32	+	0.00	+	13.25
044 Coffee & Tea	0.7303	127.19	126.33	113.68	+	0.68	+	11.88
045 Spices	0.1449	140.58	140.54	112.99	+	0.03	+	24.42
046 Other Food Products	0.0336	110.00	109.25	107.07	+	0.69	+	2.74
047 Mineral Water	0.0207	122.05	118.32	111.82	+	3.15	+	9.15
048 Beverages	0.6303	123.97	123.96	115.69	+	0.01	+	7.16
049 Tobacco Products	1.2998	104.23	104.23	104.23	+	0.00	+	0.00
Textiles & Apparels	10.3289	138.92	138.10	127.35	+	0.59	+	9.09
050 Cotton Yarn	5.2491	162.19	161.67	146.89	+	0.32	+	10.42
051 Nylon Yarn	0.1719	95.24	95.24	95.24	+	0.00	+	0.00
052 Blended Yarn	0.1689	119.77	122.06	112.63	-	1.88	+	6.34
053 Woven Fabrics	0.0128	124.07	123.42	116.80	+	0.53	+	6.22
054 Cotton Fabrics	0.6343	109.12	109.12	104.26	+	0.00	+	4.66
055 Other Fabrics	1.1016	112.30	112.30	107.19	+	0.00	+	4.77
056 Silk & Reyon Fabrics	0.7350	117.41	114.15	103.40	+	2.86	+	13.55

Annexure C: Wholesale Price Indices by Major Groups & Commodities

(2015-16=100)

Item and Specification	Weight	Index Numbers			% Change in Oct 2019 over	
		Oct 19	Sep 19	Oct 18	Sep 2019	Oct 2018
057 Towels	0.1235	109.46	106.41	108.48	+ 2.87	+ 0.90
058 Blankets	0.0029	96.44	95.81	95.37	+ 0.66	+ 1.12
059 Bed Sheets	0.0913	112.64	106.74	103.97	+ 5.53	+ 8.34
060 Quilts	0.0019	108.19	104.68	103.52	+ 3.35	+ 4.51
061 Woolen Carpets	0.0383	137.01	125.43	122.99	+ 9.23	+ 11.40
062 Synthetic Carpets	0.0566	115.72	105.96	101.85	+ 9.21	+ 13.62
063 Hosiery Products	0.8832	113.01	110.93	113.93	+ 1.88	- 0.81
064 Readymade Garments	1.0576	123.15	123.15	106.62	+ 0.00	+ 15.50
Leather Products	0.7115	111.94	110.18	106.70	+ 1.60	+ 4.91
065 Leather Without Hair	0.2973	105.65	105.65	103.93	+ 0.00	+ 1.65
066 Other Leather N.E.C	0.2567	111.77	106.90	99.25	+ 4.56	+ 12.61
067 Footwears	0.1575	124.07	124.07	124.07	+ 0.00	+ 0.00
Other Transportable Goods	22.3979	160.85	159.38	147.72	+ 0.92	+ 8.89
068 Timber	0.0165	111.75	111.75	110.72	+ 0.00	+ 0.93
069 Printing Paper	0.4279	130.70	130.70	114.63	+ 0.00	+ 14.02
070 Hard Board	0.1579	146.50	146.50	146.50	+ 0.00	+ 0.00
071 Motor Spirit	1.6268	160.18	160.18	130.57	+ 0.00	+ 22.68
072 Diesel Oil	5.4849	179.65	179.65	149.25	+ 0.00	+ 20.37
073 Kerosine Oil	0.2151	195.27	195.27	163.76	+ 0.00	+ 19.24
074 Furnace Oil	3.2664	263.20	254.70	282.91	+ 3.34	- 6.97
075 Mobil Oil	0.7114	120.04	120.04	108.11	+ 0.00	+ 11.04
076 Chemicals	1.7720	127.51	129.09	117.39	- 1.22	+ 8.62
077 Dyeing Material	0.1539	146.16	136.76	103.21	+ 6.87	+ 41.61
078 Fertilizers	2.8657	107.33	106.14	90.48	+ 1.12	+ 18.62
079 Pesticides	0.2763	110.84	110.51	104.70	+ 0.30	+ 5.86
080 Insecticides	0.1276	111.24	112.34	107.46	- 0.98	+ 3.52
081 Paints & Varnishes	0.1916	124.68	124.47	117.30	+ 0.17	+ 6.29
082 Medicines	1.1428	135.64	133.92	116.36	+ 1.28	+ 16.57
083 Soaps & Detergents	0.8168	109.62	109.62	105.50	+ 0.00	+ 3.91
084 Auto Tyres	0.2703	121.30	121.30	98.42	+ 0.00	+ 23.25
085 Plastic Products	0.4550	108.12	108.12	105.36	+ 0.00	+ 2.62
086 Glass sheets	0.2089	144.91	142.86	129.64	+ 1.43	+ 11.78
087 Other Glass Articles	0.1635	132.20	131.03	119.93	+ 0.89	+ 10.23
088 Ceramics & Sanitary Fixture	0.0244	123.82	123.82	112.41	+ 0.00	+ 10.15
089 Bricks, Blocks & Tiles	0.1566	119.34	119.29	110.08	+ 0.04	+ 8.41
090 Cement	1.8145	112.83	112.53	111.12	+ 0.27	+ 1.54
091 Bed Foam	0.0006	127.14	118.43	111.32	+ 7.35	+ 14.21
092 Matches	0.0505	1170.1	1170.1	1127.3	+ 0.00	+ 3.79
Metal Product, Machinery & Eq	8.7156	128.21	128.66	115.04	- 0.35	+ 11.45
093 Steel Bar & Sheets	1.4615	155.90	159.78	132.18	- 2.43	+ 17.95
094 Pipe Fittings	0.0780	141.32	135.47	117.12	+ 4.32	+ 20.66
095 Steel Products	0.3879	133.18	133.18	118.70	+ 0.00	+ 12.20
096 Engines & Motors	0.0046	107.29	107.29	107.29	+ 0.00	+ 0.00
097 Vacuum Pumps	0.0155	107.56	107.56	107.56	+ 0.00	+ 0.00
098 Air Conditioners	0.0049	112.46	112.46	102.43	+ 0.00	+ 9.79
099 Cultivators	0.0551	87.11	87.11	87.11	+ 0.00	+ 0.00
100 Chuff Cutter	0.1293	104.29	102.86	102.86	+ 1.39	+ 1.39
101 Tractors	0.0028	109.22	109.22	104.36	+ 0.00	+ 4.66
102 Lathe Machines	0.0525	168.06	168.06	129.05	+ 0.00	+ 30.23
103 Concrete Mixture	0.0107	100.00	100.00	100.00	+ 0.00	+ 0.00
104 Fridge, WashM, SewM, Fans, Iron	1.1645	144.56	144.29	122.33	+ 0.19	+ 18.17
105 Electric Wires	0.0912	125.73	125.73	115.52	+ 0.00	+ 8.84
106 Lighting Equipments	1.4431	110.71	110.13	106.55	+ 0.53	+ 3.90
107 Radio & Television	0.1843	97.48	97.48	96.60	+ 0.00	+ 0.91
108 Motor Vehicles	0.0244	150.63	150.63	122.81	+ 0.00	+ 22.65
109 Motorcycles	0.2570	119.59	119.59	108.68	+ 0.00	+ 10.04
110 Bicycles	3.3483	120.58	120.58	110.47	+ 0.00	+ 9.15