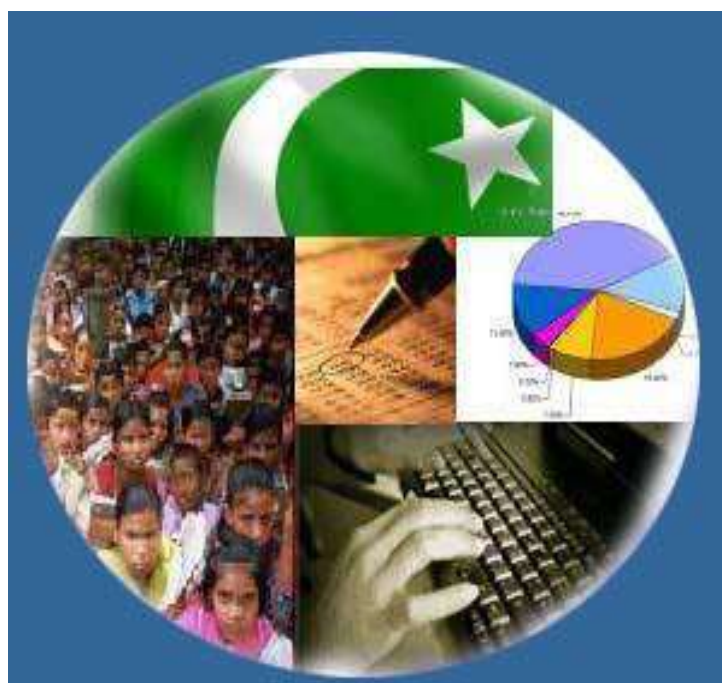




Monthly Review on Price Indices



November, 2021
(Base Year 2015-16)

Government of Pakistan
Ministry of Planning, Development & Special Initiatives
Pakistan Bureau of Statistics
Islamabad

Inflation in Brief

- CPI inflation General**, increased by 11.5% on year-on-year basis in November 2021 as compared to an increase of 9.2% in the previous month and 8.3% in November 2020. On month-on-month basis, it increased by 3.0% in November 2021 as compared to increase of 1.9% in the previous month and an increase of 0.8% in November 2020.
- CPI inflation Urban**, increased by 12.0% on year-on-year basis in November 2021 as compared to an increase of 9.6% in the previous month and 7.0% in November 2020. On month-on-month basis, it increased by 2.9% in November 2021 as compared to increase of 1.7% in the previous month and an increase of 0.6% in November 2020.
- CPI inflation Rural**, increased by 10.9% on year-on-year basis in November 2021 as compared to an increase of 8.7% in the previous month and 10.5% in November 2020. On month-on-month basis, it increased by 3.1% in November 2021 as compared to increase of 2.2% in the previous month and an increase of 1.1% in November 2020.
- SPI inflation** on YoY increased by 18.1% in November 2021 as compared to an increase of 15.2% a month earlier and an increase of 9.9% in November 2020. On MoM basis, it increased by 3.6% in November 2021 as compared to increase of 2.1% a month earlier and an increase of 1.1% in November 2020.
- WPI inflation** on YoY basis increased by 27.0% in November 2021 as compared to an increase of 21.2% a month earlier and an increase of 5.0% in November 2020. WPI inflation on MoM basis increased by 3.8% in November 2021 as compared to an increase of 4.2% a month earlier and a decrease of 0.9% in corresponding month i.e. November 2020.
- Figures 1 and 2 show graphically the yearly data of Table 1.a for Urban and Rural CPI while Table 1.1 shows "Period Average" and "YoY" percent changes in indices of three years.

Table 1.a General Inflation (%) (Base 2015-16)																		
PERIOD	CPI														SPI**		WPI	
	General						Food				Non-Food							
	National		Urban		Rural		Urban		Rural		Urban		Rural		YoY	MoM	YoY	MoM
	YoY	MoM	YoY	MoM	YoY	MoM	YoY	MoM	YoY	MoM	YoY	MoM	YoY	MoM				
Jan-20	14.6	2.0	13.4	1.7	16.3	2.4	19.5	2.7	23.8	3.4	10.2	1.1	10.5	1.5	18.3	0.5	15.4	1.8
Feb-20	12.4	-1.0	11.2	-1.1	14.2	-1.0	15.2	-1.4	19.7	-1.6	9.1	-0.9	9.8	-0.4	14.5	-0.8	12.7	-0.7
Mar-20	10.2	0.0	9.3	0.1	11.7	-0.1	13.0	0.6	15.5	-0.3	7.3	-0.1	8.5	0.1	11.8	-0.3	9.3	-0.9
Apr-20	8.5	-0.8	7.7	-0.7	9.8	-1.1	10.4	-1.0	12.9	-1.7	6.2	-0.5	7.4	-0.5	9.3	-1.8	4.9	-2.0
May-20	8.2	0.3	7.3	0.3	9.7	0.3	10.6	1.5	13.7	1.4	5.4	-0.4	6.4	-0.5	11.0	2.2	1.5	-2.1
Jun-20	8.6	0.8	7.6	0.7	10.0	1.0	12.9	1.8	15.2	2.0	4.7	0.0	5.8	0.1	11.5	1.4	0.9	-0.3
Jul-20	9.3	2.5	7.8	2.2	11.6	3.0	15.1	3.0	17.8	4.0	3.9	1.7	6.5	2.2	13.7	3.0	3.2	5.4
Aug-20	8.2	0.6	7.1	0.8	9.9	0.4	11.3	-0.3	13.5	-0.9	4.8	1.5	6.8	1.5	11.7	0.9	3.3	1.3
Sep-20	9.0	1.5	7.7	1.3	11.1	2.0	12.4	3.0	15.8	3.8	5.0	0.2	7.2	0.3	12.0	2.1	4.3	1.0
Oct-20	8.9	1.7	7.3	1.3	11.3	2.4	13.9	2.8	17.7	4.3	3.6	0.3	5.8	0.5	12.3	3.0	5.1	2.9
Nov-20	8.3	0.8	7.0	0.6	10.5	1.1	13.0	1.6	16.1	2.0	3.4	0.1	5.5	0.2	9.9	1.1	5.0	-0.9
Dec-20	8.0	-0.7	7.0	-0.3	9.5	-1.2	12.6	-2.1	13.4	-3.4	3.8	0.7	6.1	1.0	9.1	-2.7	5.7	0.3
Jan-21	5.7	-0.2	5.0	-0.2	6.6	-0.3	7.3	-2.1	7.2	-2.2	3.7	1.1	6.1	1.5	7.7	-0.8	6.4	2.5
Feb-21	8.7	1.8	8.6	2.3	8.8	1.1	10.3	1.3	9.1	0.2	7.6	2.8	8.6	2.0	11.9	3.1	9.5	2.2
Mar-21	9.1	0.4	8.7	0.3	9.5	0.5	11.5	1.7	11.1	1.5	7.1	-0.6	8.1	-0.4	18.7	5.7	14.6	3.7
Apr-21	11.1	1.0	11.0	1.3	11.3	0.6	15.7	2.7	14.1	0.9	8.2	0.5	8.9	0.3	21.3	0.4	16.6	-0.4
May-21	10.9	0.1	10.8	0.2	10.9	-0.03	15.3	1.1	12.8	0.2	8.3	-0.3	9.2	-0.3	19.7	0.8	19.4	0.3
Jun-21	9.7	-0.3	9.6	-0.4	9.7	-0.1	11.0	-1.9	9.8	-0.8	8.8	0.5	9.7	0.6	17.6	-0.4	20.9	0.9
Jul-21	8.4	1.3	8.7	1.29	8.0	1.4	9.4	1.5	7.3	1.6	8.2	1.1	8.7	1.2	16.2	1.8	17.3	2.3
Aug-21	8.4	0.6	8.3	0.5	8.4	0.7	10.2	0.5	9.1	0.8	7.2	0.5	7.7	0.6	15.9	0.7	17.1	1.2
Sep-21	9.0	2.1	9.1	2.0	8.8	2.3	10.8	3.6	9.1	3.7	8.1	1.1	8.5	1.0	16.6	2.7	19.6	3.2
Oct-21	9.2	1.9	9.6	1.7	8.7	2.2	9.4	1.5	7.2	2.6	9.7	1.8	10.0	1.9	15.2	2.1	21.2	4.2
Nov-21	11.5	3.0	12.0	2.9	10.9	3.1	11.9	3.9	8.6	3.3	12.0	2.2	13.0	3.0	18.1	3.6	27.0	3.8

** SPI for quintile 1. Digits 0.0* are due to rounding off.

Core inflation (NFNE)

7. Measured by **non-food non-energy Urban** increased by 7.6% on (YoY) basis in November, 2021 as compared to an increase of 6.7% in the previous month and 5.6% in November, 2020. On (MoM) basis, it increased by 1.1% in November, 2021 as compared to increase of 0.9% in previous month, and an increase of 0.3% in corresponding month of last year i.e. November, 2020.
8. Measured by **non-food non-energy Rural** increased by 8.2% on (YoY) basis in November, 2021 as compared to an increase of 6.7% in the previous month and 7.4% in November, 2020. On (MoM) basis, it increased by 1.8% in November, 2021 as compared to an increase of 1.0% in previous month, and an increase of 0.3% in corresponding month of last year i.e. November, 2020.

Core inflation (Trimmed)

9. Measured by 20% **weighted trimmed mean Urban** increased by 9.8% on (YoY) basis in November, 2021 as compared to 8.7% in the previous month and 6.3% in November, 2020. On (MoM) basis, it increased by 1.7% in November, 2021 as compared to an increase of 1.1% in the previous month and an increase of 0.2% in corresponding month of last year i.e. November, 2020.
10. Measured by 20% **weighted trimmed mean Rural** increased by 9.5% on (YoY) basis in November, 2021 as compared to 8.2% in the previous month and by 9.1% in November, 2020. On (MoM) basis, it increased by 2.2% in November, 2021 as compared to an increase of 1.6% in the previous month and an increase of 0.4% in corresponding month of last year i.e. November, 2020.

Table 1.b Core Inflation (%) (Base 2015-16)

Period	NFNE				Trimmed			
	Urban		Rural		Urban		Rural	
	YoY	MoM	YoY	MoM	YoY	MoM	YoY	MoM
Nov-20	5.6	0.3	7.4	0.3	6.3	0.2	9.1	0.4
Dec-20	5.6	0.4	7.7	0.5	6.2	0.4	8.8	0.6
Jan-21	5.4	0.9	7.8	1.1	5.7	1.0	8.1	1.2
Feb-21	6.4	1.1	7.7	0.5	7.9	1.0	9.2	0.5
Mar-21	6.3	0.2	7.3	0.3	8.1	0.4	9.4	0.3
Apr-21	7.0	0.9	7.7	0.7	9.8	0.6	10.6	0.2
May-21	6.8	0.2	7.6	0.3	10.0	0.2	10.3	0.4
Jun-21	6.7	0.3	7.3	0.4	9.4	0.3	9.8	0.6
Jul-21	6.9	0.8	6.9	0.7	9.0	0.8	8.4	0.8
Aug-21	6.3	0.2	6.2	0.2	7.8	0.4	7.8	0.6
Sep-21	6.4	0.4	6.2	0.5	8.7	0.9	8.2	1.2
Oct-21	6.7	0.9	6.7	1.0	8.7	1.1	8.2	1.6
Nov-21	7.6	1.1	8.2	1.8	9.8	1.7	9.5	2.2

Table 1.1 Period Average and Y-o-Y % Change

INDEX	Average Jul - Nov % changes			Nov over Nov % changes		
	2021-2022	2020-2021	2019-2020	2021-2022	2020-2021	2019-2020
CPI (National)	9.32	8.76	10.80	11.53	8.35	12.67
CPI(Urban)	9.55	7.38	10.77	11.99	6.95	12.07
CPI(Rural)	8.96	10.86	10.84	10.87	10.46	13.60
SPI	16.42	11.97	14.22	18.09	9.90	20.22
WPI	20.49	4.18	13.52	26.97	5.00	11.19

Figure 1: Urban Inflation - YoY, Special Indices

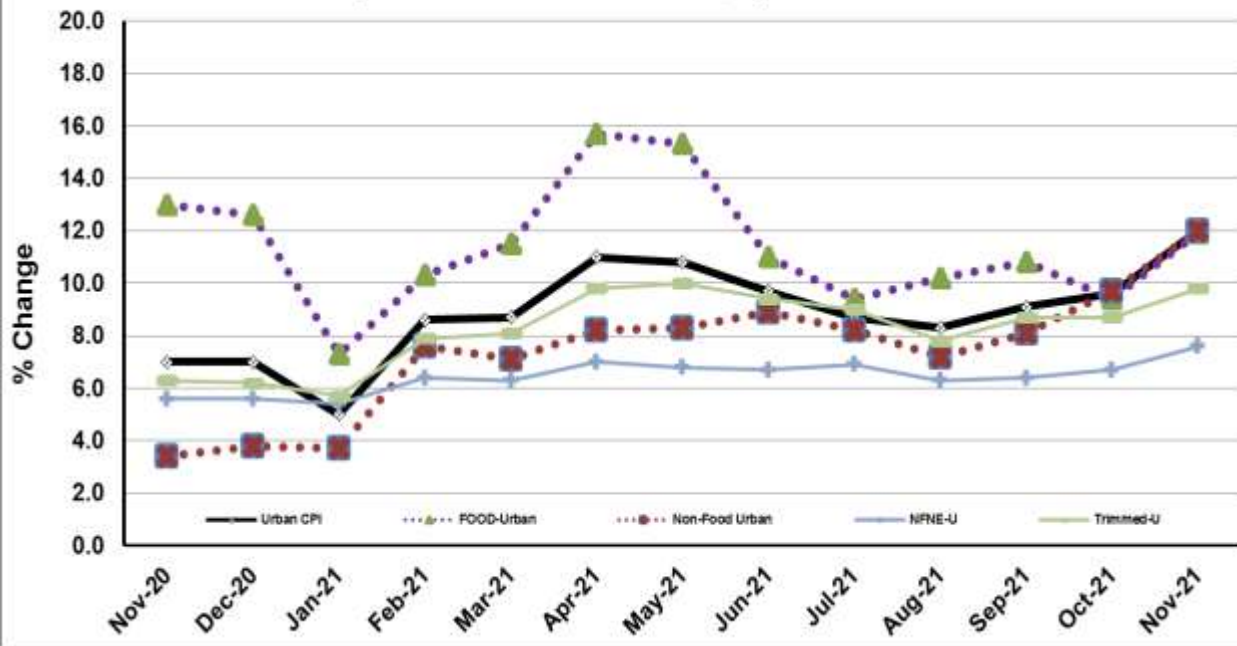
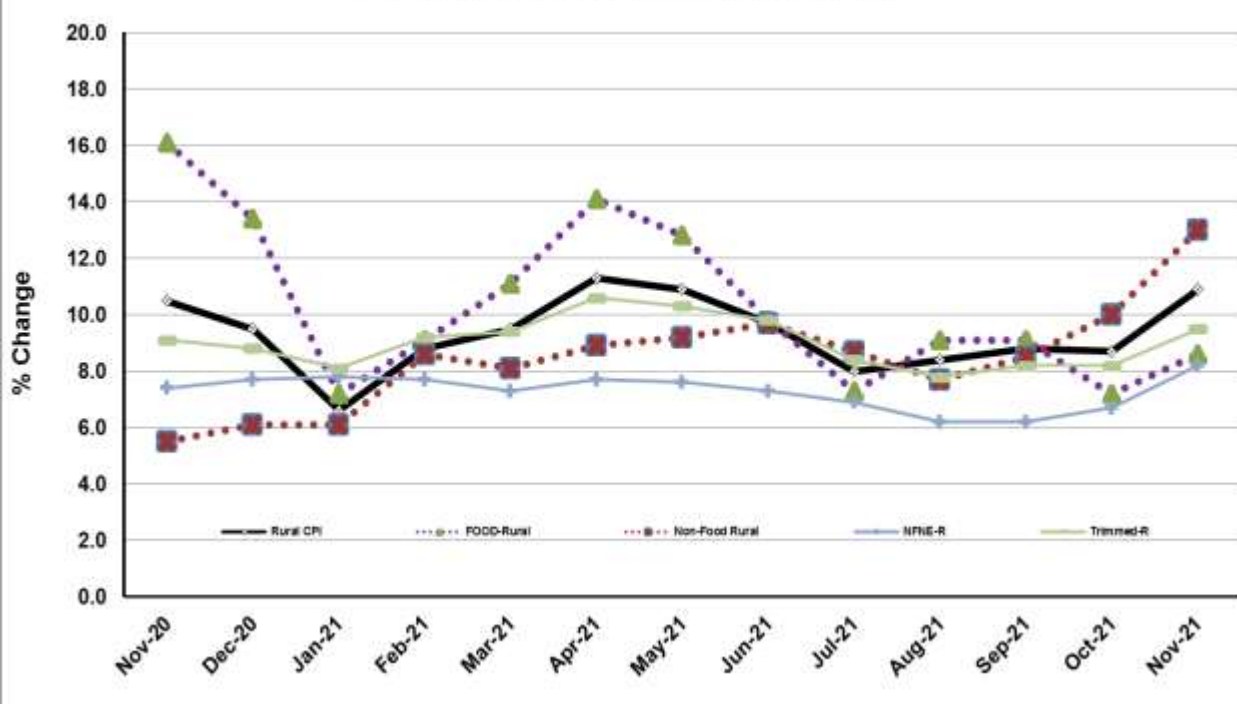


Figure 2: Rural Inflation - YoY, Special Indices



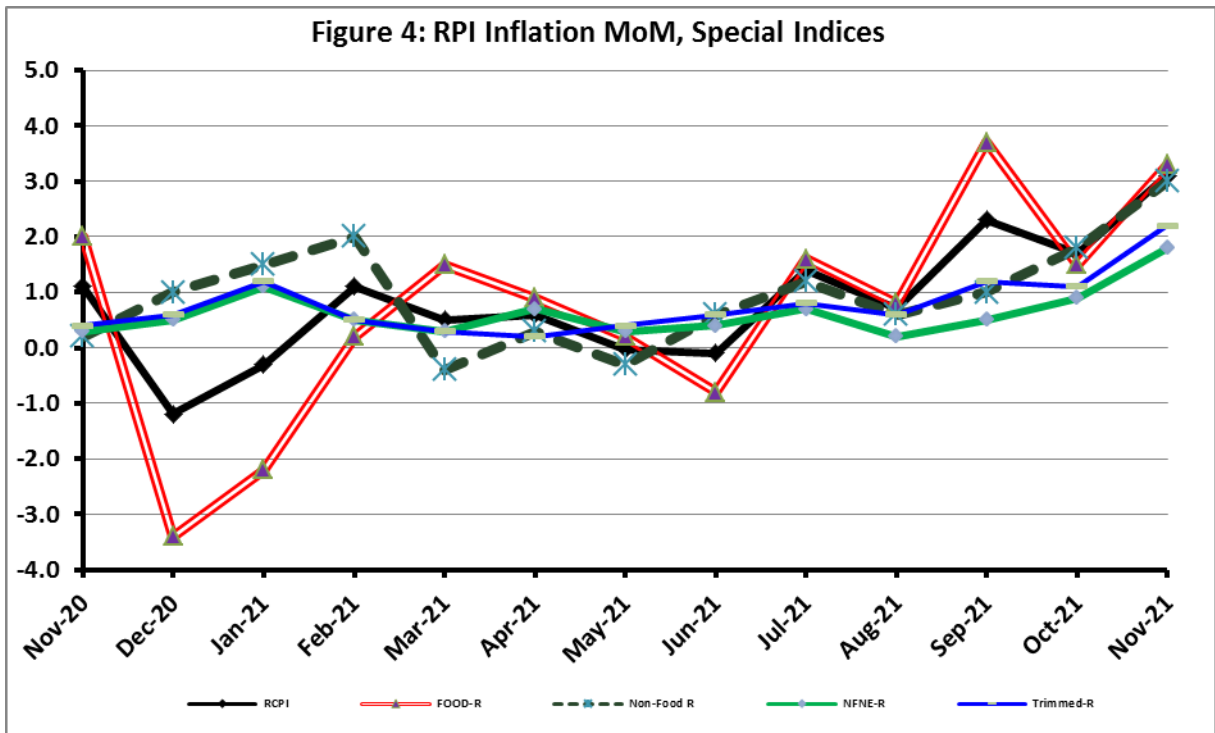
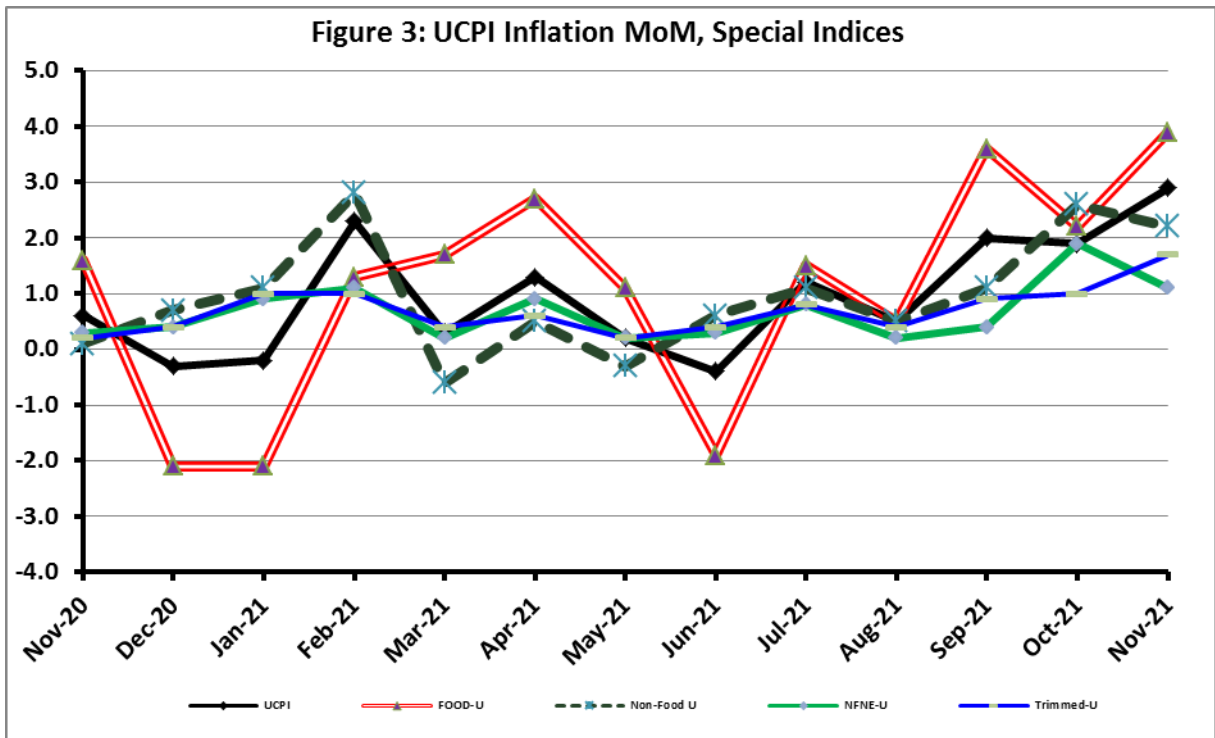


Figure 5: CPI Y.o.Y (National, Urban, Rural)

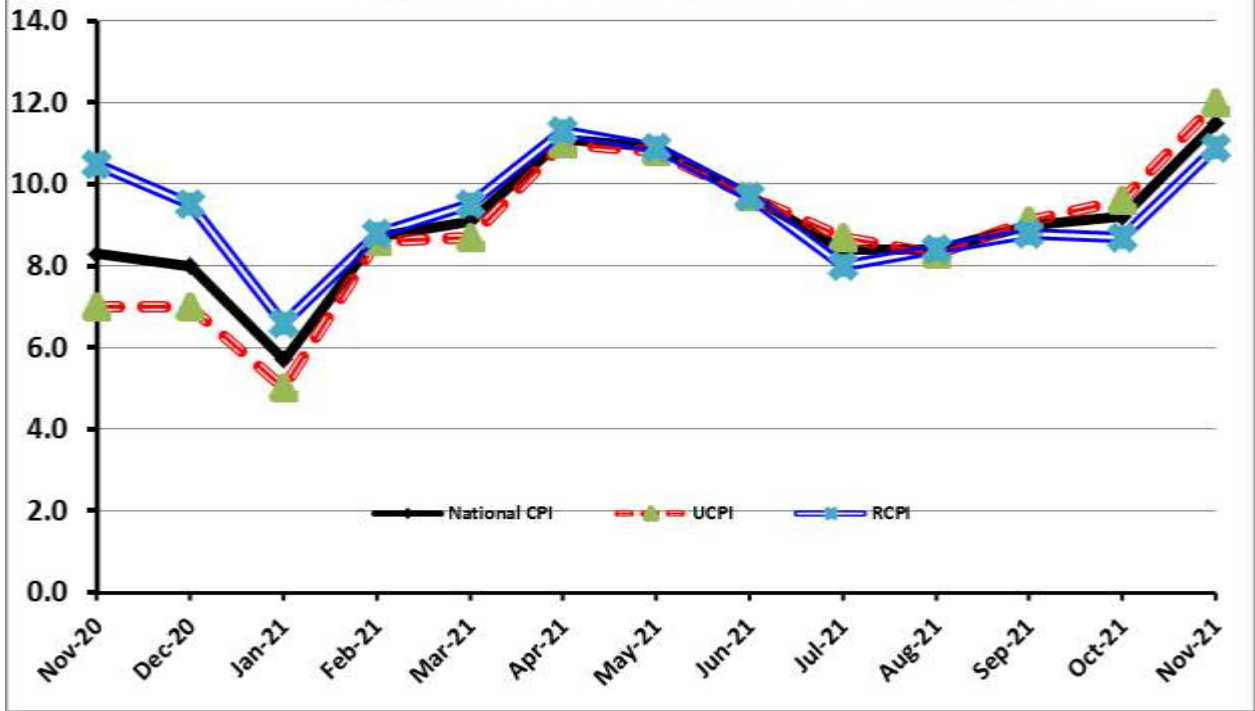
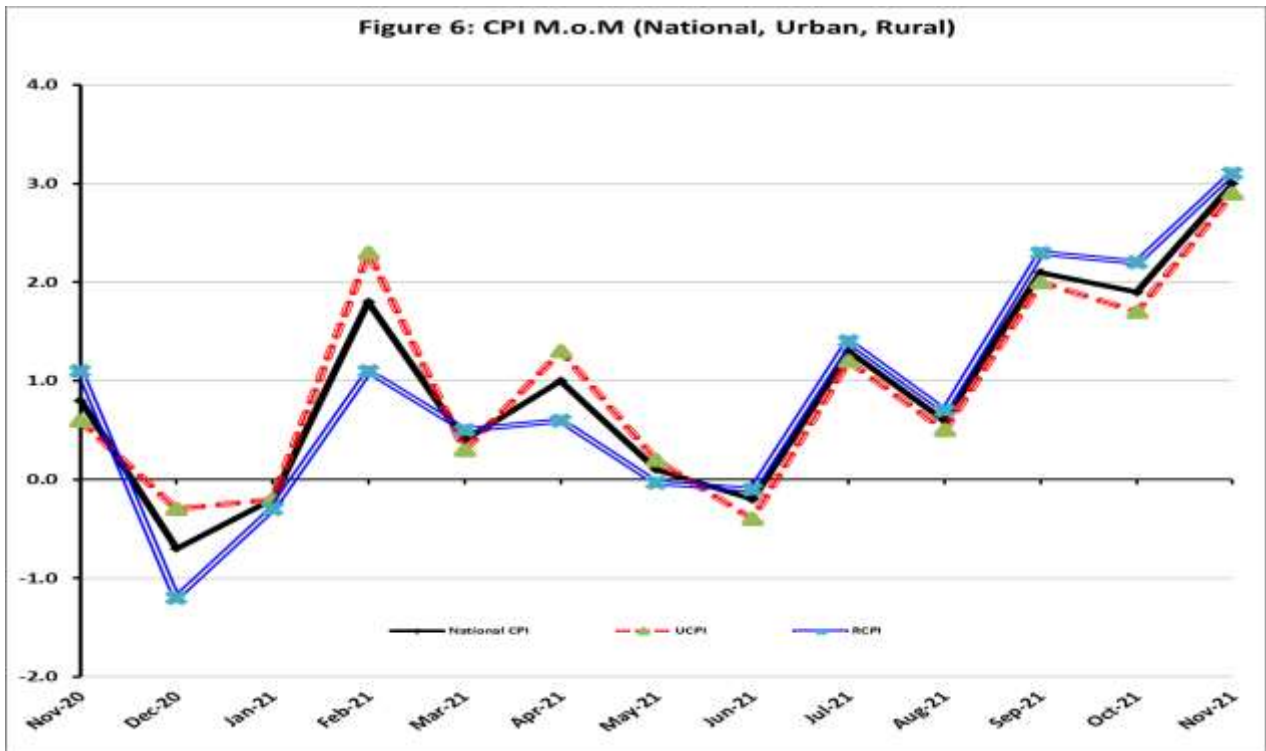


Figure 6: CPI M.o.M (National, Urban, Rural)



I. National Consumer Price Index (N-CPI)

The **National Consumer Price Index** for **November 2021** is **increased** by 2.98% over **October 2021** and increased by 11.53% over corresponding month of the last year i.e. **November 2020**.

Table 1: Consumer Price Index (National) by Group of Commodities and Services (Base 2015-16)									
No	Group	Group Weight (%)	Indices			% Change November 2021 Over		Impact (In % points) November 2021 Over	
			Nov 21	Oct 21	Nov 20	Oct 21	Nov 20	Oct 21	Nov 20
	General	100.00	158.18	153.61	141.83	2.98	11.53	2.98	11.53
1.	Food & Non-alcoholic Bev.	34.58	168.61	162.22	152.63	3.94	10.47	1.44	3.90
	<i>Non-perishable Food Items</i>	29.60	166.12	162.64	146.28	2.14	13.56	0.67	4.14
	<i>Perishable Food Items</i>	4.99	183.38	159.71	190.28	14.82	-3.63	0.77	-0.24
2.	Alcoholic Bev. & Tobacco	1.02	146.04	145.74	143.42	0.20	1.83	0.00	0.02
3.	Clothing & Footwear	8.60	153.75	150.89	140.03	1.90	9.79	0.16	0.83
4.	Housing, Water, Electricity, Gas & Fuels	23.63	152.40	148.81	132.81	2.41	14.75	0.55	3.26
5.	Furnishing & Household Equipment Maintenance	4.10	148.59	146.20	134.62	1.64	10.38	0.06	0.40
6.	Health	2.79	158.85	156.99	146.35	1.19	8.55	0.03	0.25
7.	Transport	5.91	170.07	159.97	136.68	6.31	24.43	0.39	1.39
8.	Communication	2.21	110.10	110.10	107.42	0.00	2.49	0.00	0.04
9.	Recreation & Culture	1.59	132.85	132.31	123.57	0.41	7.51	0.01	0.10
10.	Education	3.79	147.16	146.89	143.71	0.18	2.40	0.01	0.09
11.	Restaurants & Hotels	6.92	153.08	147.86	137.90	3.53	11.01	0.24	0.74
12.	Miscellaneous	4.87	161.83	158.96	147.18	1.81	9.95	0.09	0.50

II. Urban Consumer Price Index (UCPI)

The Urban Consumer Price Index of **November 2021** is increased by 2.86% over **October 2021** and increased by 11.99% over corresponding month of the last year i.e. **November 2020**.

Table 2: Consumer Price Index (Urban) by Group of Commodities and Services (Base 2015-16)

No	Group	Group Weight (%)	Indices			% Change November 2021 Over		Impact (In % points) November 2021 Over	
			Nov 21	Oct 21	Nov 20	Oct 21	Nov 20	Oct 21	Nov 20
	General	100.00	156.96	152.59	140.16	2.86	11.99	2.86	11.99
1.	Food & Non-alcoholic Bev.	30.42	167.96	161.09	149.77	4.26	12.15	1.37	3.95
	<i>Non-perishable Food Items</i>	25.97	165.64	161.69	143.72	2.44	15.25	0.67	4.06
	<i>Perishable Food Items</i>	4.46	181.47	157.61	185.01	15.14	-1.91	0.70	-0.11
2.	Alcoholic Bev.& Tobacco	0.85	155.04	154.56	152.13	0.31	1.91	0.00	0.02
3.	Clothing & Footwear	8.01	149.65	147.74	136.62	1.29	9.54	0.10	0.74
4.	Housing, Water, Electricity, Gas & Fuels	27.03	152.28	149.31	134.09	1.99	13.57	0.53	3.51
5.	Furnishing & Household Equip. & Maintenance	4.09	147.02	144.99	133.72	1.40	9.95	0.05	0.39
6.	Health	2.31	159.57	157.83	145.98	1.10	9.31	0.03	0.22
7.	Transport	6.14	172.43	161.70	137.20	6.64	25.68	0.43	1.54
8.	Communication	2.35	112.42	112.42	108.74	0.00	3.38	0.00	0.06
9.	Recreation & Culture	1.73	129.92	129.48	120.84	0.34	7.51	0.00	0.11
10.	Education	4.88	149.34	148.99	146.16	0.23	2.18	0.01	0.11
11.	Restaurants & Hotels	7.41	152.10	146.92	136.53	3.53	11.40	0.25	0.82
12.	Miscellaneous	4.77	160.41	157.79	145.64	1.66	10.14	0.08	0.50

Main contributors to month-on-month and year-on-year percentage changes are given below and detail is given in **Annexure-A**.

1. MONTH-ON-MONTH Top few commodities which varied from previous month are given below:

FOOD

Increased: Tomatoes (131.64%), Mustard oil (11.6%), Vegetable ghee (10.87%), Vegetables (10.47%), Eggs (10.19%), Cooking oil (9.71%), Potatoes (8.85%), Honey (5.61%), Fruits (4.37%), Pulse masoor (3.14%), Meat (2.63%), Milk (2.33%), Fish (1.90%), Gram whole (1.77%), Rice (1.73%) and Sugar (1.43%).

Decreased: Onions (7.97%), Chicken (4.34%) and Pulse moong (0.69%).

NON-FOOD

Increased: Liquefied Hydrocarbons (16.32%), Cleaning & laundering (16.16%), Motor fuel (8.40%), Electricity charges (8.32%), Carpets (3.61%), Cotton cloth (2.64%), Motor vehicle accessories (2.43%), Washing soap, detergents, & match box (2.24%), Construction input items (1.99%) and Drugs & medicines (1.63%).

2. YEAR-ON-YEAR: Top few commodities which varied from corresponding month of previous year i.e. November, 2020 are given below:

FOOD

Increased: Vegetable ghee (58.29%), Mustard oil (56.96%), Cooking oil (53.59%), Pulse masoor (22.38%), Fruits (21.67%), Meat (20.2%), Wheat flour (19.04%), Gram whole (14.69%), Beans (12.77%), Milk (11.71%), Vegetables (10.97%), Butter (10.83%) and Wheat (10.26%).

Decreased: Onions (37.68%), Pulse moong (27.03%) and Potatoes (17.66%).

NON-FOOD

Increased: Liquefied Hydrocarbons (80.34%), Electricity charges (47.87%), Motor fuel (40.81%), Cleaning & laundering (21.17%), Footwear (16.20%), Washing soap, detergents & match box (14.41%), Motor vehicle accessories (13.99%), Household equipment (12.42%) and Drugs & medicines (11.76%).

III. Rural Consumer Price Index (RCPI)

The Rural Consumer Price Index of November 2021 is increased by 3.15% over October 2021 and increased by 10.87% over corresponding month of the last year i.e. November 2020.

Table 3: Consumer Price Index (Rural) by Group of Commodities and Services (Base 2015-16)

No	Group	Group Weight (%)	Indices			% Change November 2021 Over		Impact (In % points) November 2021 Over	
			Nov 21	Oct 21	Nov 20	Oct 21	Nov 20	Oct 21	Nov 20
	General	100.00	160.03	155.15	144.34	3.15	10.87	3.15	10.87
1.	Food & Non-alcoholic Bev.	40.87	169.33	163.49	155.84	3.57	8.66	1.54	3.82
	<i>Non-perishable Food Items</i>	35.08	166.65	163.70	149.14	1.80	11.74	0.67	4.25
	<i>Perishable Food Items</i>	5.79	185.59	162.15	196.41	14.46	-5.51	0.87	-0.43
2.	Alcoholic Bev. & Tobacco	1.28	136.96	136.85	134.63	0.08	1.73	0.00	0.02
3.	Clothing & Footwear	9.48	158.97	154.90	144.38	2.63	10.11	0.25	0.96
4.	Housing, Water, Electricity, Gas & Fuels	18.49	152.66	147.72	129.97	3.34	17.46	0.59	2.91
5.	Furnishing & Household Equip. & Maintenance	4.10	150.96	148.01	135.98	1.99	11.02	0.08	0.43
6.	Health	3.51	158.14	156.16	146.71	1.27	7.79	0.04	0.28
7.	Transport	5.56	166.14	157.09	135.81	5.76	22.33	0.32	1.17
8.	Communication	1.99	105.96	105.96	105.08	0.00	0.84	0.00	0.01
9.	Recreation & Culture	1.38	138.41	137.69	128.75	0.52	7.50	0.01	0.09
10.	Education	2.13	139.62	139.62	135.26	0.00	3.22	0.00	0.06
11.	Restaurants & Hotels	6.19	154.84	149.55	140.37	3.54	10.31	0.21	0.62
12.	Miscellaneous	5.02	163.87	160.64	149.40	2.01	9.69	0.10	0.50

Main contributors to Month-on-Month and Year-on-Year percentage changes are given below and detail is given in **Annexure-B**.

1. MONTH-ON-MONTH Top few commodities which varied from previous month are given below:

FOOD

Increased: Tomatoes (150.74%), Potatoes (8.23%), Vegetable ghee (7.43%), Mustard oil (7.23%), Vegetables (7.15%), Cooking oil (7.02%), Eggs (6.03%), Fruits (4.21%), Beans (4.10%), Fish (3.67%), Tea (3.37%), Gram Whole (2.40%), Wheat (2.32%), Meat (2.03%) and Pulse Masoor (1.47%).

Decreased: Onions (11.07%), Chicken (4.41%), Condiments and Spices (1.66%), Pulse Mash (1.60%) and Pulse Moong (1.34%).

NON-FOOD

Increased: Liquefied Hydrocarbons (13.45%), Woolen Readymade Garments (9.11%), Motor Fuels (8.76%), Electricity Charges (8.32%), Readymade Garments (3.81%), Cleaning & Laundering (3.44%), Construction Input Items (3.20%) and Woolen Cloth (3.17%).

2. YEAR-ON-YEAR: Top few commodities which varied from corresponding month of previous year i.e. November 2020 are given below:

FOOD

Increased: Cooking oil (54.88%), Mustard oil (54.2%), Vegetable ghee (53%), Gram Whole (20.56%), Meat (18.39%), Pulse Masoor (17.88%), Fruits (15.55%), Wheat Flour (15.48%), Vegetables (13.41%), Beans (10.54%), Besan (10.24%), Milk (9.62%), Fish (9.36%) and Chicken (9.18%).

Decreased: Onions (40.57%), Pulse Moong (26.35%), Potatoes (23.5%) and Condiments & Spices (18.02%).

NON-FOOD

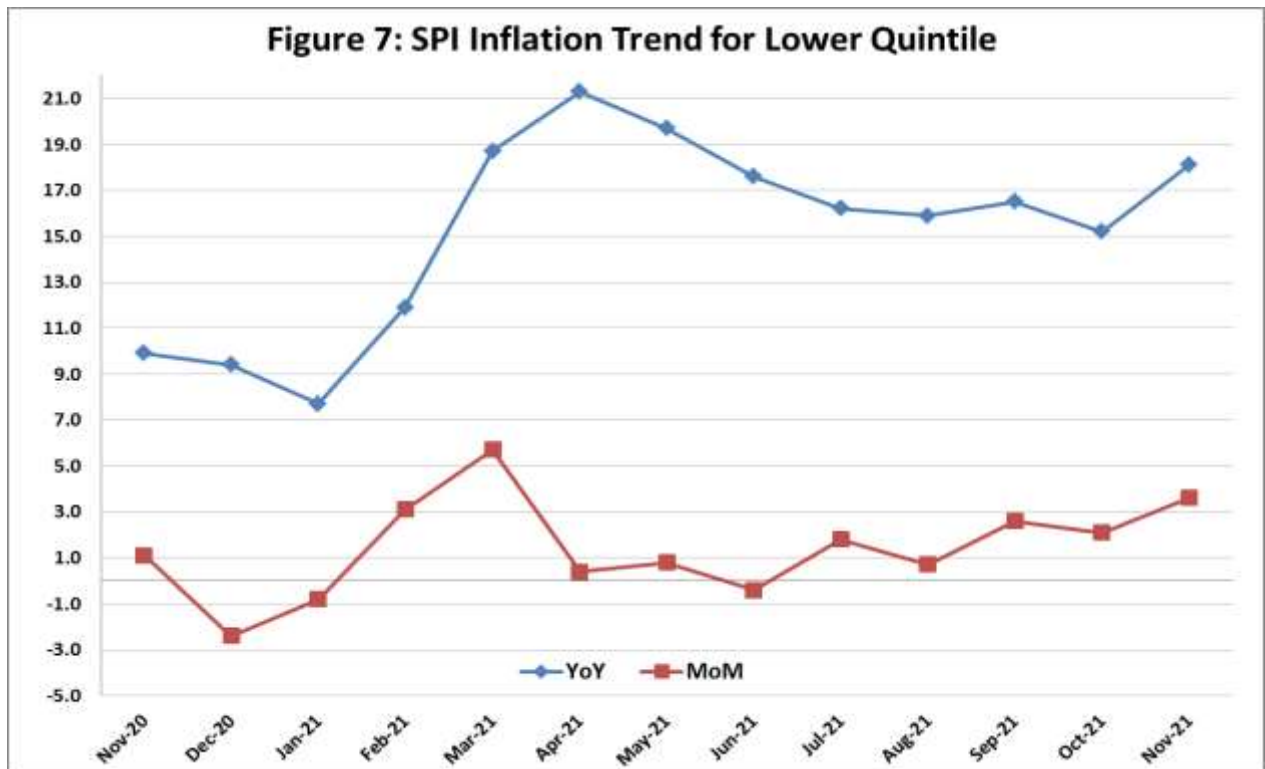
Increased: Liquefied Hydrocarbons (61.45%), Electricity Charges (47.87%), Motor Fuels (40.22%), Woolen Garments (15.98%), Hosiery (15.3%), Construction Input Items (12.83%), Washing Soaps, Detergents & Match Box (12.71%), Readymade Garments (11.32%), Clinic Fee (11.21%), Household Equipments (11.21%), Vehicles Accessories (11.00%) and Furniture & Furnishing (9.69%).

IV. Sensitive Price Indicator

Quintile-wise percentage changes YoY and MoM are given below in Table 4. The series from November 2020 to November 2021 is also graphed below in Figure 7.

Table 4: Sensitive Price Indicator (Base 2015-16)					
Quintiles	Indices			% Change November 2021 Over	
	November, 2021	October, 2021	November, 2020	October, 2021	November, 2020
1	177.57	171.43	150.37	3.58	18.09
2	167.76	161.39	144.64	3.95	15.98
3	168.46	162.30	145.88	3.80	15.48
4	164.42	158.45	142.26	3.77	15.58
5	168.32	161.13	142.69	4.46	17.96
Combined	167.30	160.71	142.56	4.10	17.35

Table 4.1 : Weekly Percentage Change of SPI During November - 2021				
Quintiles	% Change with Previous week			
	04-11-2021	11-11-2021	18-11-2021	25-11-2021
Quintile 1	0.89	1.55	0.39	-0.81
Combined	0.59	1.81	1.07	-0.67



V. Wholesale Price Index

The Wholesale Price Index for November, 2021 increased by 3.79% over October, 2021. It increased by 26.97% over the corresponding month of the last year i.e. November, 2020. YoY and MoM movements, from November, 2020 to November, 2021 are also graphed below in Figure 8.

Table 5: Wholesale Price Index by Group of Commodities (Base 2015-16)

No	Group	Group Weight (%)	Indices			% Change November 2021 Over		Impact (In % points) November 2021 Over	
			Nov 21	Oct 21	Nov 20	Oct 21	Nov 20	Oct 21	Nov 20
	General	100.00	189.54	182.62	149.28	3.79	26.97	3.79	26.97
1	Agriculture Forestry & Fishery	25.77	188.90	181.43	153.31	4.12	23.21	1.05	6.14
2	Ores/Minerals, Elec., Gas & Water	12.01	187.34	178.94	166.24	4.69	12.69	0.55	1.70
3	Food, Beverages, Tobacco, Textiles & Leather Products	31.11	176.04	172.92	145.59	1.80	20.91	0.53	6.34
	i. Food Products, Beverages & Tobacco	20.07	168.70	164.74	145.63	2.40	15.84	0.44	3.10
	ii. Textiles & Apparels	10.33	193.73	192.33	147.36	0.73	31.47	0.08	3.21
	iii. Leather Products	0.71	126.23	122.09	118.88	3.39	6.18	0.02	0.04
4	Other Transportable Goods	22.40	215.30	203.95	142.35	5.57	51.25	1.39	10.94
5	Metal Product, Machinery & Equipment	8.72	176.48	171.00	144.92	3.20	21.78	0.26	1.84

Main contributors to month-on-month and year-on-year percentage changes are given below and detail is given in **Annexure-C**.

1. MONTH-ON-MONTH: Top few commodities which varied from previous month are given below:

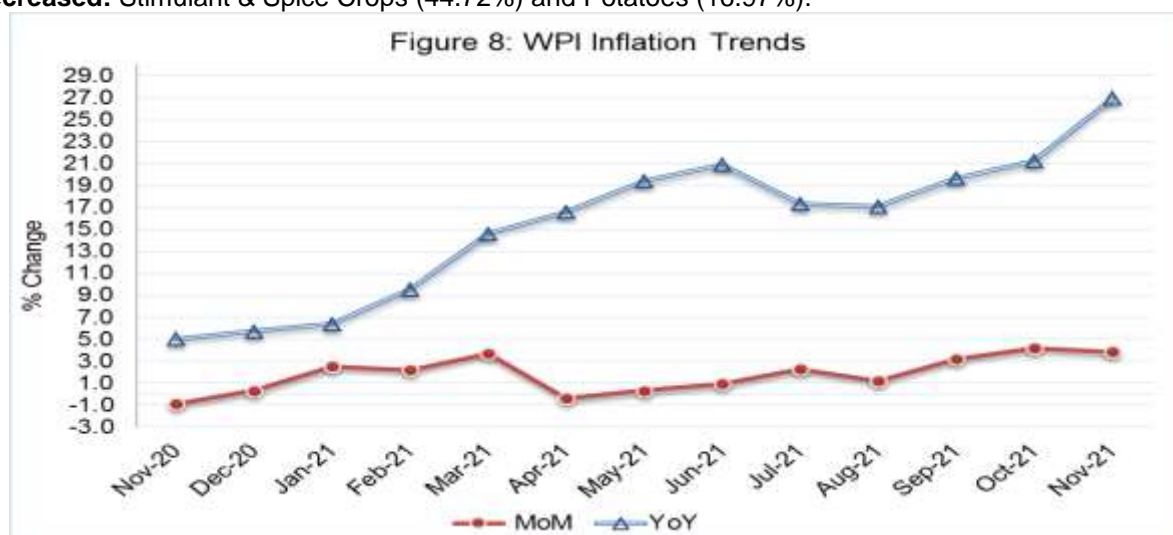
Increased: Sugar Crops (22.26%), Fertilizers (13.39%), Chemicals (12.69%), Vegetable Oils (11.06%), Eggs (10.57%), Fibre Crops (10.57%), Kerosene Oil (10.40%), Bed Foam (10.25%), Diesel (9.65%), Potatoes (9.50%), Motor Spirit (9.47%), Tractors (8.10%), Vegetable Ghee (8.00%), Steel Bar & Sheets (7.80%), Ceramics & Sanitary Fixture (7.44%), Woolen Carpets (7.02%), Synthetic Carpets (6.78%), Mobil Oil (5.68%), Woven Fabrics (5.66%), Bricks, Blocks & Tiles (5.56%), Steel Products (4.79%), Soaps & Detergents (4.71%), Timber (3.88%), Hosiery Products (3.25%), Meat (2.55%), Stimulant & Spice Crops (2.21%), Plastic Products (2.05%) and Coffee & Tea (1.81%).

Decreased: Bajra (19.83%), Fruits (9.85%), Sugar (2.95%), Poultry(2.42%) and Other Oil Seeds(0.80%)

2. YEAR-ON-YEAR: Top few commodities which varied from previous year are given below:

Increased: Furnace Oil (100.55%), Fibre Crops (80.23%), Kerosene Oil (77.2%), Cultivators (68.18%), Steel Bar & Sheets (64.11%), Diesel (62.16%), Vegetable Ghee (57.47%), Other Oil Seeds (56.32%), Vegetable Oils (50.87%), Bajra (48.92%), Fertilizers (46.27%), Motor Spirit (45.42%), Cotton Yarn (45.36%), Chemicals (41.19%), Spices (33.34%), Maize (25.02%), Silk & Rayon Fabrics (24.52%), Woven Fabrics (23.67%), Mobil Oil (19.66%), Meat (18.06%), Soaps & Detergents (17.92%), Hosiery Products (17.19%), Cement (16.12%) and Cotton Fabrics (14.98%).

Decreased: Stimulant & Spice Crops (44.72%) and Potatoes (16.97%).



Annexure A:CPI (Urban) Index Numbers by Commodity Groups & Commodities (2015-16=100)

Item and Specification	Weight	Index Numbers			% Change in Nov 2021 over			
		Nov 21	Oct 21	Nov 20	Oct 2021	Nov 2020		
General	100.0000	156.96	152.59	140.16	+	2.86	+	11.99
Food and non-alcoholic Bevera	30.4215	167.96	161.09	149.77	+	4.26	+	12.15
01 Wheat	0.6120	179.43	177.61	162.73	+	1.02	+	10.26
02 Wheat flour	3.0075	160.43	159.97	134.77	+	0.29	+	19.04
03 Wheat products	0.0936	170.74	166.74	152.98	+	2.40	+	11.61
04 Besan	0.0830	127.25	126.87	122.64	+	0.30	+	3.76
05 Rice	1.1804	150.76	148.20	138.43	+	1.73	+	8.91
06 Bakery and confectionary	0.4770	156.86	151.61	141.38	+	3.46	+	10.95
07 Nimco	0.1224	160.71	154.23	134.36	+	4.20	+	19.61
08 Meat	2.0411	186.39	181.62	155.07	+	2.63	+	20.20
09 Chicken	1.3631	173.58	181.45	163.50	-	4.34	+	6.17
10 Fish	0.3855	118.05	115.85	114.45	+	1.90	+	3.15
11 Milk fresh	7.1070	149.52	146.11	133.85	+	2.33	+	11.71
12 Milk products	0.6407	151.47	149.94	137.07	+	1.02	+	10.51
13 Milk powder	0.3106	143.08	142.69	134.76	+	0.27	+	6.17
14 Eggs	0.5083	212.84	193.16	194.34	+	10.19	+	9.52
15 Butter	0.0932	197.28	196.85	178.01	+	0.22	+	10.83
16 Mustard oil	0.0120	207.49	185.93	132.19	+	11.60	+	<u>56.96</u>
17 Cooking oil	1.1016	220.17	200.69	143.35	+	9.71	+	<u>53.59</u>
18 Vegetable ghee	1.0324	236.06	212.91	149.13	+	10.87	+	<u>58.29</u>
19 Dry fruits	0.3299	146.16	138.34	137.32	+	5.65	+	6.44
20 Fresh fruits	1.4363	127.67	122.33	104.93	+	4.37	+	21.67
21 Pulse masoor	0.1624	127.27	123.40	104.00	+	3.14	+	22.38
22 Pulse moong	0.1697	106.16	106.90	145.48	-	0.69	-	27.03
23 Pulse mash	0.1152	107.61	106.92	104.59	+	0.65	+	2.89
24 Pulse gram	0.1660	123.58	123.74	117.96	-	0.13	+	4.76
25 Gram whole	0.0912	141.09	138.63	123.02	+	1.77	+	14.69
26 Beans	0.0408	177.45	176.82	157.35	+	0.36	+	12.77
27 Potatoes	0.4496	244.99	225.08	297.55	+	8.85	-	17.66
28 Onions	0.5928	113.13	122.93	181.53	-	7.97	-	37.68
29 Tomatoes	0.3459	344.06	148.53	333.74	+	<u>131.6</u>	+	3.09
30 Fresh vegetables	1.5306	199.47	180.64	179.83	+	10.42	+	10.92
31 Sugar	1.1130	162.77	160.47	159.21	+	1.43	+	2.24
32 Gur	0.0379	164.50	160.48	146.47	+	2.50	+	12.31
33 Honey	0.1017	147.40	139.57	130.08	+	5.61	+	13.31
34 Sweetmeat	0.3535	174.52	165.20	147.68	+	5.64	+	18.17
35 Ice cream	0.1044	146.86	146.73	136.35	+	0.09	+	7.71
36 Condiments and Spices	1.3340	207.85	207.82	200.15	+	0.01	+	3.85
37 Dessert preparation	0.0419	133.28	133.28	126.70	+	0.00	+	5.19
38 Tea	0.8427	152.53	151.88	140.70	+	0.43	+	8.41
39 Beverages	0.8906	135.37	134.60	127.99	+	0.57	+	5.77
Alcoholic Beverages, Tobacco	0.8540	155.04	154.56	152.13	+	0.31	+	1.91
40 Cigarettes	0.7167	141.09	141.09	141.26	+	0.00	-	0.12
41 Pan prepared	0.1373	227.85	224.89	208.87	+	1.32	+	9.09
Clothing and footwear	8.0096	149.65	147.74	136.62	+	1.29	+	9.54
42 Cotton cloth	2.2227	154.61	150.63	142.31	+	2.64	+	8.64
43 Woolen cloth	0.8361	143.93	142.62	134.61	+	0.92	+	6.92
44 Readymade garments	1.3196	143.97	143.12	132.81	+	0.59	+	8.40
45 Woolen readymade garments	0.4307	143.59	142.27	138.45	+	0.93	+	3.71
46 Tailoring	1.0741	154.21	153.06	142.26	+	0.75	+	8.40
47 Hosiery	0.4070	146.54	145.30	132.73	+	0.85	+	10.40
48 Dopatta	0.1713	131.01	130.05	126.96	+	0.74	+	3.19
49 Cleaning and laundering	0.0665	172.85	148.80	142.65	+	16.16	+	21.17
50 Footwear	1.4816	150.92	150.81	129.88	+	0.07	+	16.20
Housing, water, Elec., Gas an	27.0332	152.28	149.31	134.09	+	1.99	+	13.57
51 House rent	19.2558	142.06	142.06	133.24	+	0.00	+	6.62
52 Construction input items	0.3765	163.51	160.32	148.04	+	1.99	+	10.45
53 Construction wage rates	0.2025	164.77	163.87	152.57	+	0.55	+	8.00
54 Water supply	0.5269	162.68	162.68	156.64	+	0.00	+	3.86
55 Garbage collection	0.1064	177.79	177.21	169.20	+	0.33	+	5.08
56 Electricity charges	4.5562	167.52	154.66	113.29	+	8.32	+	47.87
57 Gas charges	1.0807	216.94	216.94	216.94	+	0.00	+	0.00
58 Liquefied Hydrocarbons	0.5064	258.57	222.30	143.38	+	16.32	+	<u>80.34</u>
59 Solid Fuel	0.4218	125.40	121.03	116.09	+	3.61	+	8.02

Annexure A:CPI (Urban) Index Numbers by Commodity Groups & Commodities (2015-16=100)

Item and Specification	Weight	Index Numbers			% Change in Nov 2021 over			
		Nov 21	Oct 21	Nov 20	Oct 2021	Nov 2020		
<i>Furnishing and household equi</i>	4.0937	147.02	144.99	133.72	+	1.40	+	9.95
60 Furniture and furnishing	0.4750	147.02	145.12	137.10	+	1.31	+	7.24
61 Carpets	0.0308	118.08	113.97	112.55	+	3.61	+	4.91
62 Household textiles	0.3420	137.22	136.05	131.89	+	0.86	+	4.04
63 Household equipments	1.0032	149.76	148.64	133.21	+	0.75	+	12.42
64 Plastic products	0.0536	132.29	131.53	119.52	+	0.58	+	10.68
65 Major tools & equipments	0.0084	140.06	139.53	129.26	+	0.38	+	8.36
66 Washing soap/detergents/match	1.4112	153.47	150.11	134.14	+	2.24	+	14.41
67 Household servant	0.7695	138.23	136.95	134.21	+	0.93	+	3.00
<i>Health</i>	2.3098	159.57	157.83	145.98	+	1.10	+	9.31
68 Drugs and medicines	1.0735	160.71	158.13	143.80	+	1.63	+	11.76
69 Therapeutic Appliances and Eq	0.0054	118.41	116.90	114.94	+	1.29	+	3.02
70 Doctor (MBBS) clinic fee	0.4044	198.64	196.06	184.48	+	1.32	+	7.68
71 Dental services	0.0156	129.62	129.11	121.81	+	0.40	+	6.41
72 Medical tests	0.2367	136.06	135.39	130.65	+	0.49	+	4.14
73 Hospitals services	0.5742	140.80	140.75	130.22	+	0.04	+	8.12
<i>Transport</i>	6.1368	172.43	161.70	137.20	+	6.64	+	25.68
74 Motor vehicles	0.8097	162.77	154.29	150.68	+	5.50	+	8.02
75 Motor vehicle accessories	0.1941	153.36	149.72	134.54	+	2.43	+	13.99
76 Motor fuel	2.9088	202.40	186.71	143.74	+	8.40	+	40.81
77 Mechanical services	0.4290	146.82	140.01	133.67	+	4.86	+	9.84
78 Motor vehicle tax	0.0482	136.37	136.37	126.72	+	0.00	+	7.62
79 Transport services	1.7470	136.40	130.85	121.53	+	4.24	+	12.24
<i>Communication</i>	2.3536	112.42	112.42	108.74	+	0.00	+	3.38
80 Postal services	0.0190	163.41	163.41	147.39	+	0.00	+	10.87
81 Communication apparatus	0.4524	128.79	128.79	118.95	+	0.00	+	8.27
82 Communication Services	1.8822	107.97	107.97	105.89	+	0.00	+	1.96
<i>Recreation and culture</i>	1.7301	129.92	129.48	120.84	+	0.34	+	7.51
83 Recreation and culture	0.6478	115.88	115.38	112.03	+	0.43	+	3.44
84 Text books	0.6655	134.04	133.65	120.68	+	0.29	+	11.07
85 Newspapers	0.0716	151.55	151.55	151.55	+	0.00	+	0.00
86 stationery	0.3452	143.83	143.31	131.30	+	0.36	+	9.54
<i>Education</i>	4.8807	149.34	148.99	146.16	+	0.23	+	2.18
87 Education	4.8807	149.34	148.99	146.16	+	0.23	+	2.18
<i>Restaurants and hotels</i>	7.4050	152.10	146.92	136.53	+	3.53	+	11.40
88 Readymade food	5.5235	153.74	150.35	136.99	+	2.25	+	12.23
89 Marriage Hall Charges	1.7514	149.46	138.27	136.83	+	8.09	+	9.23
90 Accommodation Services	0.1301	118.21	117.75	113.20	+	0.39	+	4.43
<i>Misc. goods and services</i>	4.7720	160.41	157.79	145.64	+	1.66	+	10.14
91 Personal Grooming Services	0.8001	143.51	140.72	133.95	+	1.98	+	7.14
92 Electrical Appliances for Per	0.0465	120.76	120.10	118.42	+	0.55	+	1.98
93 Appliances/Articles/Products	2.9807	149.52	148.63	133.52	+	0.60	+	11.98
94 Personal Effects	0.9447	211.02	203.00	195.10	+	3.95	+	8.16

Annexure B:CPI (Rural) Index Numbers by Commodity Groups & Commodities (2015-16=100)

Item and Specification	Weight	Index Numbers			% Change in Nov 2021 over			
		Nov 21	Oct 21	Nov 20	Oct 2021	Nov 2020		
General	100.0000	160.03	155.15	144.34	+	3.15	+	10.87
Food and non-alcoholic Bevera	40.8668	169.33	163.49	155.84	+	3.57	+	8.66
01 Wheat	3.4736	177.09	173.08	170.14	+	2.32	+	4.08
02 Wheat Flour	3.4297	167.01	166.71	144.62	+	0.18	+	15.48
03 Wheat Products	0.1068	162.47	155.83	148.60	+	4.26	+	9.33
04 Besan	0.0728	133.93	132.54	121.49	+	1.05	+	10.24
05 Rice	1.5501	191.64	190.47	181.94	+	0.61	+	5.33
06 Bakery and Confectionary	0.3702	155.80	151.64	139.91	+	2.74	+	11.36
07 Nimco	0.0774	140.08	138.13	125.09	+	1.41	+	11.98
08 Meat	1.7146	183.13	179.49	154.69	+	2.03	+	18.39
09 Chicken	1.4641	180.67	189.01	165.48	-	4.41	+	9.18
10 Fish	0.2640	133.44	128.72	122.02	+	3.67	+	9.36
11 Milk fresh	10.3803	143.51	141.92	130.91	+	1.12	+	9.62
12 Milk products	0.9624	142.10	139.30	129.42	+	2.01	+	9.80
13 Milk powder	0.1062	131.80	131.13	126.93	+	0.51	+	3.84
14 Eggs	0.5665	201.40	189.95	190.41	+	6.03	+	5.77
15 Butter	0.3333	153.97	151.70	138.05	+	1.50	+	11.53
16 Mustard oil	0.0136	209.95	195.79	136.15	+	7.23	+	<u>54.20</u>
17 Cooking oil	0.6011	241.53	225.69	155.95	+	7.02	+	<u>54.88</u>
18 Vegetable ghee	2.3764	246.46	229.41	161.09	+	7.43	+	<u>53.00</u>
19 Dry fruits	0.2496	163.97	158.44	150.53	+	3.49	+	8.93
20 Fresh fruits	1.4505	121.44	116.53	105.10	+	4.21	+	15.55
21 Pulse Masoor	0.2076	132.58	130.66	112.47	+	1.47	+	17.88
22 Pulse Moong	0.2510	112.28	113.80	152.45	-	1.34	-	26.35
23 Pulse Mash	0.1465	107.40	109.15	103.37	-	1.60	+	3.90
24 Pulse Gram	0.2751	125.76	126.29	117.68	-	0.42	+	6.87
25 Gram Whole	0.1116	140.88	137.58	116.85	+	2.40	+	20.56
26 Beans	0.0896	181.45	174.30	164.15	+	4.10	+	10.54
27 Potatoes	0.7437	261.90	241.98	342.34	+	8.23	-	23.50
28 Onions	0.8965	105.77	118.93	177.96	-	11.07	-	40.57
29 Tomatoes	0.5069	325.71	129.90	312.75	+	<u>150.7</u>	+	4.14
30 Fresh Vegetables	2.0947	201.77	188.30	177.91	+	7.15	+	13.41
31 Sugar	2.0296	170.72	169.75	169.15	+	0.57	+	0.93
32 Gur	0.1522	162.25	162.71	142.87	-	0.28	+	13.56
33 Honey	0.0296	149.60	144.67	129.03	+	3.41	+	15.94
34 Sweetmeat	0.3967	152.64	144.81	133.59	+	5.41	+	14.26
35 Ice Cream	0.0568	142.84	142.84	133.02	+	0.00	+	7.38
36 Condiments and Spices	1.4919	162.55	165.30	198.27	-	1.66	-	18.02
37 Dessert Preparation	0.0133	133.57	132.71	123.95	+	0.65	+	7.76
38 Tea	1.2566	149.65	144.77	137.95	+	3.37	+	8.48
39 Beverages	0.5537	139.06	137.69	129.89	+	0.99	+	7.06
Alcoholic Beverages, Tobacco	1.2786	136.96	136.85	134.63	+	0.08	+	1.73
40 Cigarettes	1.2364	135.47	135.46	133.31	+	0.01	+	1.62
41 Pan Prepared	0.0422	180.77	177.75	173.46	+	1.70	+	4.21
Clothing and footwear	9.4826	158.97	154.90	144.38	+	2.63	+	10.11
42 Cotton Cloth	2.8381	173.70	170.47	159.13	+	1.89	+	9.16
43 Woolen Cloth	1.0959	151.79	147.13	135.07	+	3.17	+	12.38
44 Readymade Garments	1.1345	152.58	146.98	137.06	+	3.81	+	11.32
45 Woolen Readymade Garments	0.5401	156.36	143.31	134.82	+	9.11	+	15.98
46 Tailoring	1.2999	155.45	153.01	140.46	+	1.59	+	10.67
47 Hosiery	0.4322	195.59	191.48	169.64	+	2.15	+	15.30
48 Dopatta	0.2078	149.43	145.99	137.02	+	2.36	+	9.06
49 Cleaning and Laundering	0.0176	155.79	150.61	141.54	+	3.44	+	10.07
50 Footwear	1.9165	140.96	138.27	132.67	+	1.95	+	6.25
Housing, water, Elec., Gas an	18.4853	152.66	147.72	129.97	+	3.34	+	17.46
51 House Rent	8.6110	142.07	142.07	133.23	+	0.00	+	6.64
52 Construction Input Items	0.6306	144.29	139.81	127.88	+	3.20	+	12.83
53 Construction Wage Rates	0.2526	166.14	163.23	153.65	+	1.78	+	8.13
54 Water Supply	0.0645	218.49	218.49	214.98	+	0.00	+	1.63
55 Garbage Collection	0.0080	154.75	154.75	142.31	+	0.00	+	8.74
56 Electricity Charges	3.4431	167.52	154.66	113.29	+	8.32	+	47.87
57 Liquefied Hydrocarbons	0.9994	212.50	187.31	131.62	+	13.45	+	<u>61.45</u>
58 Solid Fuel	4.4761	147.71	143.60	133.86	+	2.86	+	10.35

Annexure B:CPI (Rural) Index Numbers by Commodity Groups & Commodities (2015-16=100)

Item and Specification	Weight	Index Numbers			% Change in Nov 2021 over			
		Nov 21	Oct 21	Nov 20	Oct 2021	Nov 2020		
<i>Furnishing and household equi</i>	4.1031	150.96	148.01	135.98	+	1.99	+	11.02
59 Furniture and Furnishing	0.5786	153.48	150.94	139.92	+	1.68	+	9.69
60 Household Textiles	0.4382	141.09	136.74	132.29	+	3.18	+	6.65
61 Household Equipments	1.2774	158.09	155.51	142.16	+	1.66	+	11.21
62 Plastic Products	0.0776	162.21	161.88	151.70	+	0.20	+	6.93
63 Major Tools and Equipments	0.0324	135.10	131.24	122.10	+	2.94	+	10.65
64 Washing Soaps, Detergents and	1.6989	147.08	143.96	130.49	+	2.17	+	12.71
<i>Health</i>	3.5141	158.14	156.16	146.71	+	1.27	+	7.79
65 Drugs and Medicines	1.5792	159.37	156.78	146.77	+	1.65	+	8.58
66 Doctor Clinic Fee	0.5128	198.33	193.43	178.34	+	2.53	+	11.21
67 Dental Services	0.0181	136.74	134.31	126.65	+	1.81	+	7.97
68 Medical Tests	0.3967	155.84	155.42	149.10	+	0.27	+	4.52
69 Hospitals Services	1.0073	137.04	136.91	129.94	+	0.09	+	5.46
<i>Transport</i>	5.5580	166.14	157.09	135.81	+	5.76	+	22.33
70 Motor Vehicles	0.7305	142.56	139.36	129.26	+	2.30	+	10.29
71 Motor Vehicles Accessories	0.1572	154.43	149.78	139.12	+	3.10	+	11.00
72 Motor Fuels	2.4932	199.18	183.14	142.05	+	8.76	+	40.22
73 Mechanical Services	0.3645	158.20	158.20	155.26	+	0.00	+	1.89
74 Motor Vehicle Tax	0.0174	120.86	120.86	127.98	+	0.00	-	5.56
75 Transport Services	1.7952	132.92	128.88	125.66	+	3.13	+	5.78
<i>Communication</i>	1.9940	105.96	105.96	105.08	+	0.00	+	0.84
76 Postal Services	0.0070	149.43	149.43	149.43	+	0.00	+	0.00
77 Communication Apparatus	0.3362	122.40	122.40	120.28	+	0.00	+	1.76
78 Communication Services	1.6508	102.42	102.42	101.79	+	0.00	+	0.62
<i>Recreation and culture</i>	1.3764	138.41	137.69	128.75	+	0.52	+	7.50
79 Recreation and Culture	0.4763	142.52	141.01	130.55	+	1.07	+	9.17
80 Text Books	0.5047	126.09	125.81	116.85	+	0.22	+	7.91
81 Newspapers	0.0230	165.56	165.56	165.56	+	0.00	+	0.00
82 Stationery	0.3724	148.17	147.80	140.29	+	0.25	+	5.62
<i>Education</i>	2.1342	139.62	139.62	135.26	+	0.00	+	3.22
83 Education	2.1342	139.62	139.62	135.26	+	0.00	+	3.22
<i>Restaurants and hotels</i>	6.1895	154.84	149.55	140.37	+	3.54	+	10.31
84 Readymade Food	3.8001	165.02	162.42	149.25	+	1.60	+	10.57
85 Marriage Hall Charges	2.2525	140.90	130.75	127.73	+	7.76	+	10.31
86 Accommodation Services	0.1369	101.62	101.62	101.62	+	0.00	+	0.00
<i>Misc. goods and services</i>	5.0174	163.87	160.64	149.40	+	2.01	+	9.69
87 Personal Grooming Services	1.5363	169.23	168.38	150.28	+	0.50	+	12.61
88 Appliances/Articles/Products	2.2746	138.55	137.61	127.59	+	0.68	+	8.59
89 Personal Effects	1.2065	204.78	194.21	189.39	+	5.44	+	8.13

Annexure C: Wholesale Price Indices by Major Groups & Commodities (2015-16=100)

Item and Specification	Weight	Index Numbers			% Change in Nov 2021 over			
		Nov 21	Oct 21	Nov 20	Oct 2021	Nov 2020		
General	100.0000	189.54	182.62	149.28	+	3.79	+	26.97
Agriculture Forestry & Fisher	25.7674	188.90	181.43	153.31	+	4.12	+	23.21
001 Wheat	0.6297	178.16	177.53	162.78	+	0.35	+	9.45
002 Maize	0.6764	174.25	171.15	139.38	+	1.81	+	25.02
003 Rice	2.4413	176.99	176.81	163.37	+	0.10	+	8.34
004 Sorghum / Jowar	0.0214	202.39	200.66	193.02	+	0.86	+	4.85
005 Millet / Bajra	0.0374	201.54	251.38	135.33	-	19.83	+	48.92
006 Vegetables	1.2441	238.79	236.42	217.73	+	1.00	+	9.67
007 Fresh Fruits	1.5144	120.82	134.02	116.12	-	9.85	+	4.05
008 Dry Fruits	0.2478	141.78	139.61	132.59	+	1.55	+	6.93
009 Cotton Seeds	1.1511	144.71	143.86	138.68	+	0.59	+	4.35
010 Other Oil Seeds	0.0722	232.39	234.26	148.66	-	0.80	+	56.32
011 Edible Roots / Potatoes	0.2540	298.25	272.37	359.21	+	9.50	-	16.97
012 Stimulant & Spice Crops	0.1634	226.93	222.02	410.52	+	2.21	-	44.72
013 Pulses	0.4901	137.03	135.03	120.00	+	1.48	+	14.19
014 Sugar Crops	1.0725	169.98	139.03	129.98	+	22.26	+	30.77
015 Fibre Crops	5.3169	301.86	273.00	167.49	+	10.57	+	80.23
016 Unmanufactured Tobacco	0.0742	245.79	243.73	217.92	+	0.85	+	12.79
017 Poultry	0.5633	171.82	176.09	162.02	-	2.42	+	6.05
018 Raw Milk from Bovine Animals	7.0279	143.83	143.28	134.75	+	0.38	+	6.74
019 Eggs	0.5034	211.32	191.12	199.42	+	10.57	+	5.97
020 Raw Animal Materials / Wool	0.0351	108.11	107.88	105.50	+	0.21	+	2.47
021 Hides, Skins & Fur Skins, Raw	0.4834	32.59	32.24	29.26	+	1.09	+	11.38
022 Fuel Wood in Logs	0.0179	136.78	130.63	123.92	+	4.71	+	10.38
023 Fish Live Fresh or Chilled	1.7295	158.05	158.04	158.23	+	0.01	-	0.11
Ores/Minerals, Elec., Gas & W	12.0069	187.34	178.94	166.24	+	4.69	+	12.69
024 Coal not Agglomerated	0.7508	75.79	75.79	75.79	+	0.00	+	0.00
025 Natural Gas Liquefied	5.7065	210.42	208.15	202.62	+	1.09	+	3.85
026 Salt & Pure Sodium Chloride	0.0584	169.63	169.28	168.70	+	0.21	+	0.55
027 Electrical Energy	5.4912	178.79	162.79	140.77	+	9.83	+	27.01
Food, Beverages, Tobacco, Textil	31.1122	176.04	172.92	145.59	+	1.80	+	20.91
Food Products, Beverages &	20.0718	168.70	164.74	145.63	+	2.40	+	15.84
028 Meat of Animals	3.4559	190.14	185.41	161.06	+	2.55	+	18.06
029 Vegetables & Fruit Juice	0.0058	126.63	124.92	114.49	+	1.37	+	10.60
030 Dried Fruits & Nuts	0.1733	182.51	179.12	169.88	+	1.89	+	7.43
031 Fruit Juices	0.3880	132.16	131.76	128.61	+	0.30	+	2.76
032 Vegetable Oils Refined	1.9242	197.34	177.68	130.80	+	11.06	+	50.87
033 Vegetable Ghee	1.5632	245.26	227.10	155.75	+	8.00	+	57.47
034 Oil Cakes	0.9611	167.01	166.25	152.57	+	0.46	+	9.46
035 Processed Liquid Milk	4.4437	144.24	143.90	142.63	+	0.24	+	1.13
036 Milk & Cream in Solid Form	0.0316	137.40	136.17	132.32	+	0.90	+	3.84
037 Ice Cream	0.0047	148.14	148.14	137.64	+	0.00	+	7.63
038 Dairy Products N.E.C	0.0117	143.55	139.59	137.64	+	2.84	+	4.29
039 Wheat Flour	2.3034	166.38	166.24	146.70	+	0.08	+	13.42
040 Other Cereal Flour	0.0604	132.64	131.18	119.56	+	1.11	+	10.94
041 Sugar Refined	1.7975	160.75	165.64	161.18	-	2.95	-	0.27
042 Chocolate	0.0139	89.55	89.03	88.54	+	0.58	+	1.14
043 Sugar Confectionary	0.0738	188.88	187.72	186.20	+	0.62	+	1.44
044 Coffee & Tea	0.7303	141.75	139.23	129.75	+	1.81	+	9.25
045 Spices	0.1449	335.16	334.82	251.35	+	0.10	+	33.34
046 Other Food Products	0.0336	119.82	119.35	117.51	+	0.39	+	1.97
047 Mineral Water	0.0207	126.02	125.37	125.24	+	0.52	+	0.62
048 Beverages	0.6303	134.00	133.73	129.24	+	0.20	+	3.68
049 Tobacco Products	1.2998	104.23	104.23	104.23	+	0.00	+	0.00
Textiles & Apparels	10.3289	193.73	192.33	147.36	+	0.73	+	31.47
050 Cotton Yarn	5.2491	239.61	239.61	164.84	+	0.00	+	45.36
051 Nylon Yarn	0.1719	95.24	95.24	95.24	+	0.00	+	0.00
052 Blended Yarn	0.1689	148.12	148.12	120.22	+	0.00	+	23.21
053 Woven Fabrics	0.0128	170.33	161.21	137.73	+	5.66	+	23.67
054 Cotton Fabrics	0.6343	173.53	170.50	150.92	+	1.78	+	14.98
055 Other Fabrics	1.1016	126.80	126.80	114.72	+	0.00	+	10.53
056 Silk & Rayon Fabrics	0.7350	177.09	168.54	142.22	+	5.07	+	24.52
057 Towels	0.1235	144.30	142.27	125.60	+	1.43	+	14.89
058 Blankets	0.0029	105.33	105.10	104.95	+	0.22	+	0.36
059 Bed Sheets	0.0913	127.92	127.88	121.35	+	0.03	+	5.41

Annexure C: Wholesale Price Indices by Major Groups & Commodities (2015-16=100)

Item and Specification	Weight	Index Numbers			% Change in Nov 2021 over	
		Nov 21	Oct 21	Nov 20	Oct 2021	Nov 2020
060 Quilts	0.0019	121.31	121.31	110.42	+ 0.00	+ 9.86
061 Woolen Carpets	0.0383	146.63	137.01	137.01	+ 7.02	+ 7.02
062 Synthetic Carpets	0.0566	125.03	117.09	116.17	+ 6.78	+ 7.63
063 Hosiery Products	0.8832	144.38	139.83	123.20	+ 3.25	+ 17.19
064 Readymade Garments	1.0576	141.38	140.39	136.13	+ 0.71	+ 3.86
Leather Products	0.7115	126.23	122.09	118.88	+ 3.39	+ 6.18
065 Leather Without Hair	0.2973	119.80	112.56	108.00	+ 6.43	+ 10.93
066 Other Leather N.E.C	0.2567	118.07	114.96	111.77	+ 2.71	+ 5.64
067 Footwear's	0.1575	151.69	151.69	151.00	+ 0.00	+ 0.46
Other Transportable Goods	22.3979	215.30	203.95	142.35	+ 5.57	+ 51.25
068 Timber	0.0165	163.17	157.07	152.83	+ 3.88	+ 6.77
069 Printing Paper	0.4279	130.70	130.70	130.70	+ 0.00	+ 0.00
070 Hard Board	0.1579	146.50	146.50	146.50	+ 0.00	+ 0.00
071 Motor Spirit	1.6268	205.82	188.02	141.53	+ 9.47	+ 45.42
072 Diesel Oil	5.4849	212.51	193.81	131.05	+ 9.65	+ 62.16
073 Kerosene Oil	0.2151	226.89	205.51	128.04	+ 10.40	+ 77.20
074 Furnace Oil	3.2664	442.74	439.50	220.76	+ 0.74	+ 100.5
075 Mobil Oil	0.7114	144.86	137.08	121.06	+ 5.68	+ 19.66
076 Chemicals	1.7720	192.57	170.88	136.39	+ 12.69	+ 41.19
077 Dyeing Material	0.1539	146.16	146.16	146.16	+ 0.00	+ 0.00
078 Fertilizers	2.8657	142.98	126.10	97.75	+ 13.39	+ 46.27
079 Pesticides	0.2763	146.51	146.51	141.59	+ 0.00	+ 3.47
080 Insecticides	0.1276	111.49	111.49	111.49	+ 0.00	+ 0.00
081 Paints & Varnishes	0.1916	153.85	153.73	135.82	+ 0.08	+ 13.27
082 Medicines	1.1428	161.64	159.31	145.41	+ 1.46	+ 11.16
083 Soaps & Detergents	0.8168	130.82	124.93	110.94	+ 4.71	+ 17.92
084 Auto Tires	0.2703	147.75	142.11	124.77	+ 3.97	+ 18.42
085 Plastic Products	0.4550	122.37	119.91	117.75	+ 2.05	+ 3.92
086 Glass sheets	0.2089	149.77	149.20	138.76	+ 0.38	+ 7.93
087 Other Glass Articles	0.1635	158.06	151.04	149.95	+ 4.65	+ 5.41
088 Ceramics & Sanitary Fixture	0.0244	137.83	128.29	124.21	+ 7.44	+ 10.97
089 Bricks, Blocks & Tiles	0.1566	143.66	136.09	134.58	+ 5.56	+ 6.75
090 Cement	1.8145	139.80	138.55	120.39	+ 0.90	+ 16.12
091 Bed Foam	0.0006	197.07	178.75	148.99	+ 10.25	+ 32.27
092 Matches	0.0505	1195.3	1195.3	1171.75	+ 0.00	+ 2.02
Metal Product, Machinery & Eq	8.7156	176.48	171.00	144.92	+ 3.20	+ 21.78
093 Steel Bar & Sheets	1.4615	259.81	241.02	158.31	+ 7.80	+ 64.11
094 Pipe Fittings	0.0780	208.61	176.06	144.78	+ 18.49	+ 44.09
095 Steel Products	0.3879	140.75	134.31	134.16	+ 4.79	+ 4.91
096 Engines & Motors	0.0046	107.29	107.29	107.29	+ 0.00	+ 0.00
097 Vacuum Pumps	0.0155	107.56	107.56	107.56	+ 0.00	+ 0.00
098 Air Conditioners	0.0049	129.14	129.14	123.30	+ 0.00	+ 4.74
099 Cultivators	0.0551	174.49	103.75	103.75	+ 68.18	+ 68.18
100 Chuff Cutter	0.1293	128.57	128.57	110.00	+ 0.00	+ 16.88
101 Tractors	0.0028	146.62	135.63	129.36	+ 8.10	+ 13.34
102 Lathe Machines	0.0525	242.71	242.71	210.12	+ 0.00	+ 15.51
103 Concrete Mixture	0.0107	100.00	100.00	100.00	+ 0.00	+ 0.00
104 Fridge, WashM, SewM, Fans, Iron	1.1645	171.12	163.05	154.42	+ 4.95	+ 10.81
105 Electric Wires	0.0912	148.23	148.23	144.65	+ 0.00	+ 2.47
106 Lighting Equipments	1.4431	131.75	131.75	119.49	+ 0.00	+ 10.26
107 Radio & Television	0.1843	108.07	108.07	105.55	+ 0.00	+ 2.39
108 Motor Vehicles	0.0244	166.28	156.48	156.45	+ 6.26	+ 6.28
109 Motorcycles	0.2570	154.28	147.86	124.50	+ 4.34	+ 23.92
110 Bicycles	3.3483	172.55	172.55	153.05	+ 0.00	+ 12.74