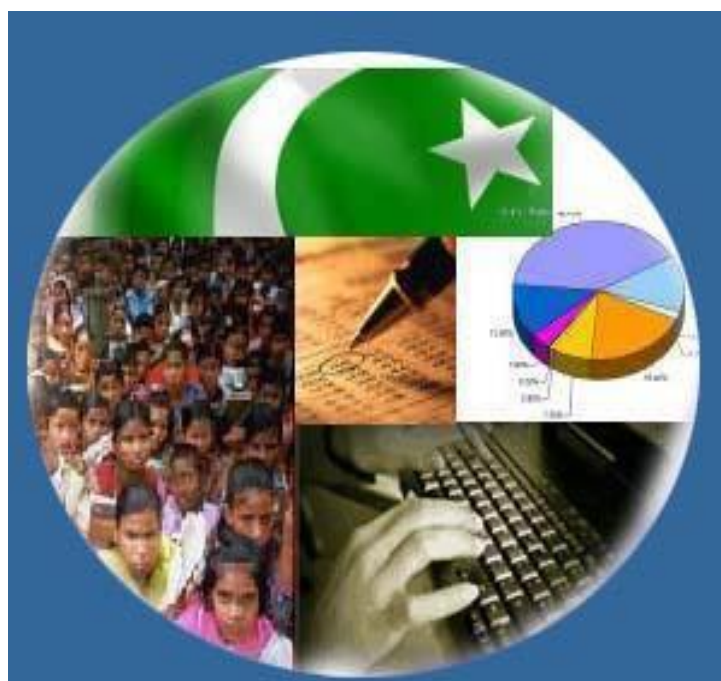




Monthly Review on Price Indices



May, 2021
(Base Year 2015-16)

Government of Pakistan
Ministry of Planning, Development & Special Initiatives
Pakistan Bureau of Statistics
Islamabad

Inflation in Brief

- CPI inflation General**, increased by 10.9% on year-on-year basis in May 2021 as compared to an increase of 11.1% in the previous month and 8.2% in May 2020. On month-on-month basis, it increased by 0.1% in May 2021 as compared to an increase of 1.0% in the previous month and a increase of 0.3% in May 2020.
- CPI inflation Urban**, increased by 10.8% on year-on-year basis in May 2021 as compared to an increase of 11.0% in the previous month and 7.3% in May 2020. On month-on-month basis, it increased by 0.2% in May 2021 as compared to an increase of 1.3% in the previous month and a increase of 0.3% in May 2020.
- CPI inflation Rural**, increased by 10.9% on year-on-year basis in May 2021 as compared to an increase of 11.3% in the previous month and 9.7% in May 2020. On month-on-month basis, it decreased by 0.03% in May 2021 as compared to an increase of 0.6% in the previous month and an increase of 0.3% in May 2020.
- SPI inflation** on YoY increased by 19.7% in May 2021 as compared to an increase of 21.3% a month earlier and an increase of 11.0% in May 2020. On MoM basis, it increased by 0.8% in May 2021 as compared to an increase of 0.4% a month earlier and an increase of 2.2% in May 2020.
- WPI inflation** on YoY basis increased by 19.4% in May 2021 as compared to an increase of 16.6% a month earlier and an increase of 1.5% in May 2020. WPI inflation on MoM basis increased by 0.3% in May 2021 as compared to a decrease of 0.4% a month earlier and a decrease of 2.1% in corresponding month i.e. May 2020.
- Figures 1 and 2 show graphically the yearly data of Table 1.a for Urban and Rural CPI while Table 1.1 shows "Period Average" and "YoY" percent changes in indices of three years.

Table 1.a General Inflation (%) (Base 2015-16)																		
PERIOD	CPI														SPI**		WPI	
	General						Food				Non-Food							
	National		Urban		Rural		Urban		Rural		Urban		Rural		YoY	MoM	YoY	MoM
	YoY	MoM	YoY	MoM	YoY	MoM	YoY	MoM	YoY	MoM	YoY	MoM	YoY	MoM				
Jul-19	8.4	1.8	8.7	2.0	7.9	1.6	7.9	1.0	9.3	1.7	9.2	2.5	6.8	1.5	8.9	1.0	13.3	3.1
Aug-19	10.5	1.6	10.6	1.5	10.3	1.9	11.9	3.1	12.6	2.9	9.9	0.5	8.4	1.1	12.1	2.7	14.1	1.2
Sep-19	11.4	0.8	11.6	0.7	11.1	0.8	15.0	2.0	15.0	1.8	9.7	0.0	8.0	0.0	14.7	1.9	15.9	0.1
Oct-19	11.0	1.8	10.9	1.6	11.3	2.2	13.7	1.4	14.6	2.6	9.3	1.7	8.7	1.8	15.1	2.7	13.3	2.0
Nov-19	12.7	1.3	12.1	1.0	13.6	1.9	16.6	2.4	19.3	3.4	9.6	0.2	9.0	0.6	20.2	3.7	11.2	-0.8
Dec-19	12.6	-0.3	12.0	-0.4	13.6	-0.3	16.7	-1.7	19.7	-1.1	9.5	0.4	8.8	0.4	18.1	-2.0	12.4	-0.3
Jan-20	14.6	2.0	13.4	1.7	16.3	2.4	19.5	2.7	23.8	3.4	10.2	1.1	10.5	1.5	18.3	0.5	15.4	1.8
Feb-20	12.4	-1.0	11.2	-1.1	14.2	-1.0	15.2	-1.4	19.7	-1.6	9.1	-0.9	9.8	-0.4	14.5	-0.8	12.7	-0.7
Mar-20	10.2	0.0	9.3	0.1	11.7	-0.1	13.0	0.6	15.5	-0.3	7.3	-0.1	8.5	0.1	11.8	-0.3	9.3	-0.9
Apr-20	8.5	-0.8	7.7	-0.7	9.8	-1.1	10.4	-1.0	12.9	-1.7	6.2	-0.5	7.4	-0.5	9.3	-1.8	4.9	-2.0
May-20	8.2	0.3	7.3	0.3	9.7	0.3	10.6	1.5	13.7	1.4	5.4	-0.4	6.4	-0.5	11.0	2.2	1.5	-2.1
Jun-20	8.6	0.8	7.6	0.7	10.0	1.0	12.9	1.8	15.2	2.0	4.7	0.0	5.8	0.1	11.5	1.4	0.9	-0.3
July-20	9.3	2.5	7.8	2.2	11.6	3.0	15.1	3.0	17.8	4.0	3.9	1.7	6.5	2.2	13.7	3.0	3.2	5.4
Aug-20	8.2	0.6	7.1	0.8	9.9	0.4	11.3	-0.3	13.5	-0.9	4.8	1.5	6.8	1.5	11.7	0.9	3.3	1.3
Sep-20	9.0	1.5	7.7	1.3	11.1	2.0	12.4	3.0	15.8	3.8	5.0	0.2	7.2	0.3	12.0	2.1	4.3	1.0
Oct-20	8.9	1.7	7.3	1.3	11.3	2.4	13.9	2.8	17.7	4.3	3.6	0.3	5.8	0.5	12.3	3.0	5.1	2.9
Nov-20	8.3	0.8	7.0	0.6	10.5	1.1	13.0	1.6	16.1	2.0	3.4	0.1	5.5	0.2	9.9	1.1	5.0	-0.9
Dec-20	8.0	-0.7	7.0	-0.3	9.5	-1.2	12.6	-2.1	13.4	-3.4	3.8	0.7	6.1	1.0	9.1	-2.7	5.7	0.3
Jan-21	5.7	-0.2	5.0	-0.2	6.6	-0.3	7.3	-2.1	7.2	-2.2	3.7	1.1	6.1	1.5	7.7	-0.8	6.4	2.5
Feb-21	8.7	1.8	8.6	2.3	8.8	1.1	10.3	1.3	9.1	0.2	7.6	2.8	8.6	2.0	11.9	3.1	9.5	2.2
Mar-21	9.1	0.4	8.7	0.3	9.5	0.5	11.5	1.7	11.1	1.5	7.1	-0.6	8.1	-0.4	18.7	5.7	14.6	3.7
Apr-21	11.1	1.0	11.0	1.3	11.3	0.6	15.7	2.7	14.1	0.9	8.2	0.5	8.9	0.3	21.3	0.4	16.6	-0.4
May-21	10.9	0.1	10.8	0.2	10.9	-0.03	15.3	1.1	12.8	0.2	8.3	-0.3	9.2	-0.3	19.7	0.8	19.4	0.3

** SPI for quintile 1. Digits 0.0* are due to rounding off.

Core inflation (NFNE)

7. Measured by **non-food non-energy Urban** increased by 6.8% on (YoY) basis in May, 2021 as compared to an increase of 7.0% in the previous month and 6.3% in May, 2020. On (MoM) basis, it increased by 0.2% in May, 2021 as compared to increase of 0.9% in previous month, and an increase of 0.4% in corresponding month of last year i.e. May, 2020.
8. Measured by **non-food non-energy Rural** increased by 7.6% on (YoY) basis in May, 2021 as compared to an increase of 7.7% in the previous month and 8.4% in May, 2020. On (MoM) basis, it increased by 0.3% in May, 2021 as compared to an increase of 0.7% in previous month, and an increase of 0.4% in corresponding month of last year i.e. May, 2020.

Core inflation (Trimmed)

9. Measured by 20% **weighted trimmed mean Urban** increased by 10.0% on (YoY) basis in May, 2021 as compared to 9.8% in the previous month and 6.7% in May, 2020. On (MoM) basis, it increased by 0.2% in May, 2021 as compared to an increase of 0.6% in the previous month and a decrease of 0.4% in corresponding month of last year i.e. May, 2020.
10. Measured by 20% **weighted trimmed mean Rural** increased by 10.3% on (YoY) basis in May, 2021 as compared to 10.6% in the previous month and by 8.9% in May, 2020. On (MoM) basis, it increased by 0.4% in May, 2021 as compared to an increase of 0.2% in the previous month and an increase of 0.5% in corresponding month of last year i.e. May, 2020.

Table 1.b Core Inflation (%) (Base 2015-16)

Period	NFNE				Trimmed			
	Urban		Rural		Urban		Rural	
	YoY	MoM	YoY	MoM	YoY	MoM	YoY	MoM
May-20	6.3	0.4	8.4	0.4	6.7	0.4	8.9	0.5
Jun-20	6.5	0.4	8.8	0.7	7.4	0.4	9.9	0.9
Jul-20	5.3	0.6	7.8	1.1	6.7	0.9	9.8	1.5
Aug-20	5.6	0.7	7.6	0.8	7.0	1.3	9.3	1.0
Sep-20	5.5	0.3	7.8	0.4	7.1	0.4	10.0	0.9
Oct-20	5.6	0.6	7.6	0.6	6.5	0.6	9.5	1.1
Nov-20	5.6	0.3	7.4	0.3	6.3	0.2	9.1	0.4
Dec-20	5.6	0.4	7.7	0.5	6.2	0.4	8.8	0.6
Jan-21	5.4	0.9	7.8	1.1	5.7	1.0	8.1	1.2
Feb-21	6.4	1.1	7.7	0.5	7.9	1.0	9.2	0.5
Mar-21	6.3	0.2	7.3	0.3	8.1	0.4	9.4	0.3
Apr-21	7.0	0.9	7.7	0.7	9.8	0.6	10.6	0.2
May-21	6.8	0.2	7.6	0.3	10.0	0.2	10.3	0.4

Table 1.1 Period Average and Y-o-Y % Change

INDEX	Average July- May % changes			May over May % changes		
	2020-2021	2019-2020	2018-2019	2020-2021	2019-2020	2018-2019
CPI (National)	8.83	10.94	6.69	10.87	8.22	8.42
CPI(Urban)	8.00	10.41	7.00	10.84	7.27	8.51
CPI(Rural)	10.07	11.77	6.19	10.91	9.69	8.27
SPI	13.49	13.95	4.73	19.72	10.99	9.90
WPI	8.41	11.13	16.18	19.39	1.50	16.49

Figure 1: Urban Inflation - YoY, Special Indices

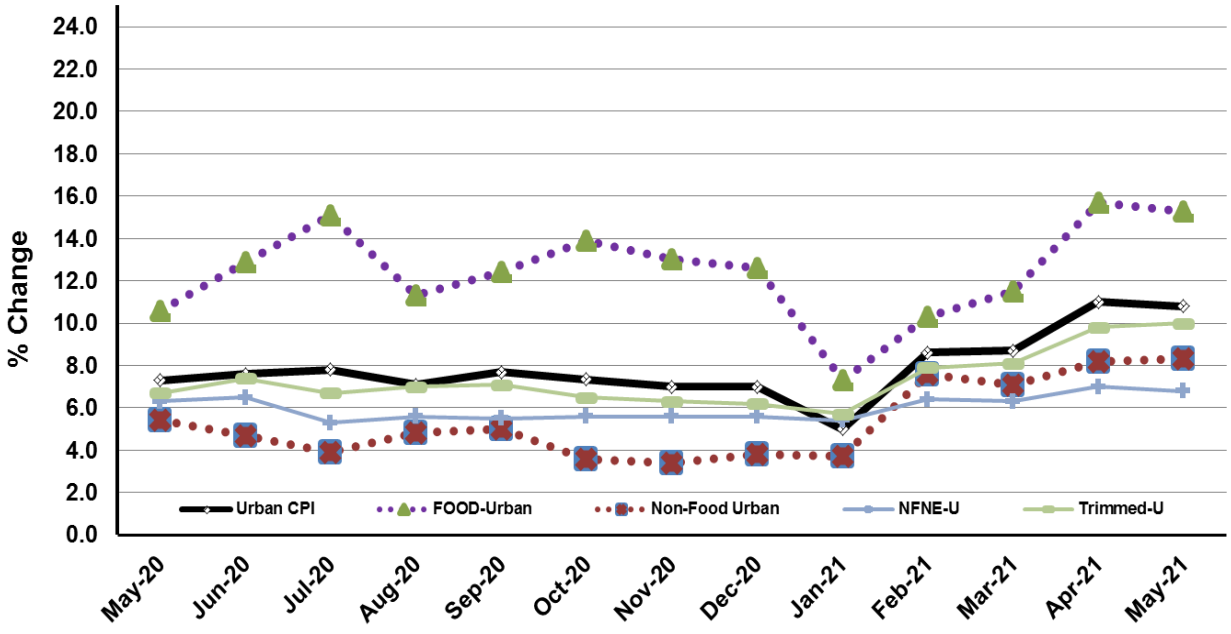
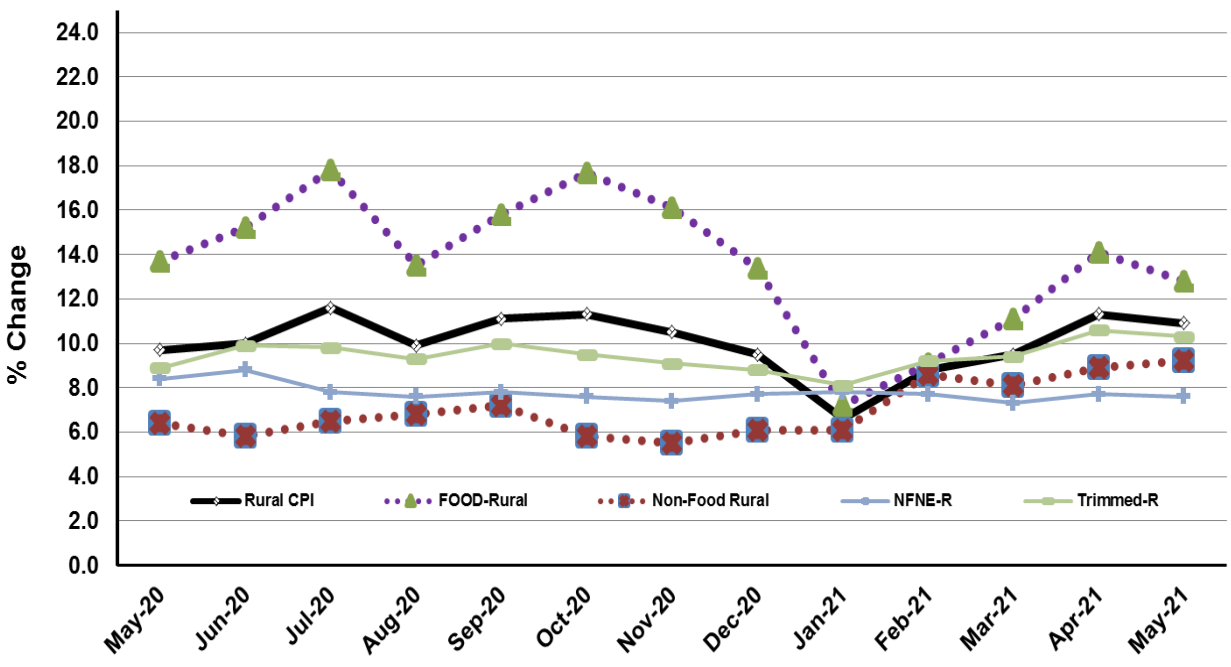


Figure 2: Rural Inflation - YoY, Special Indices



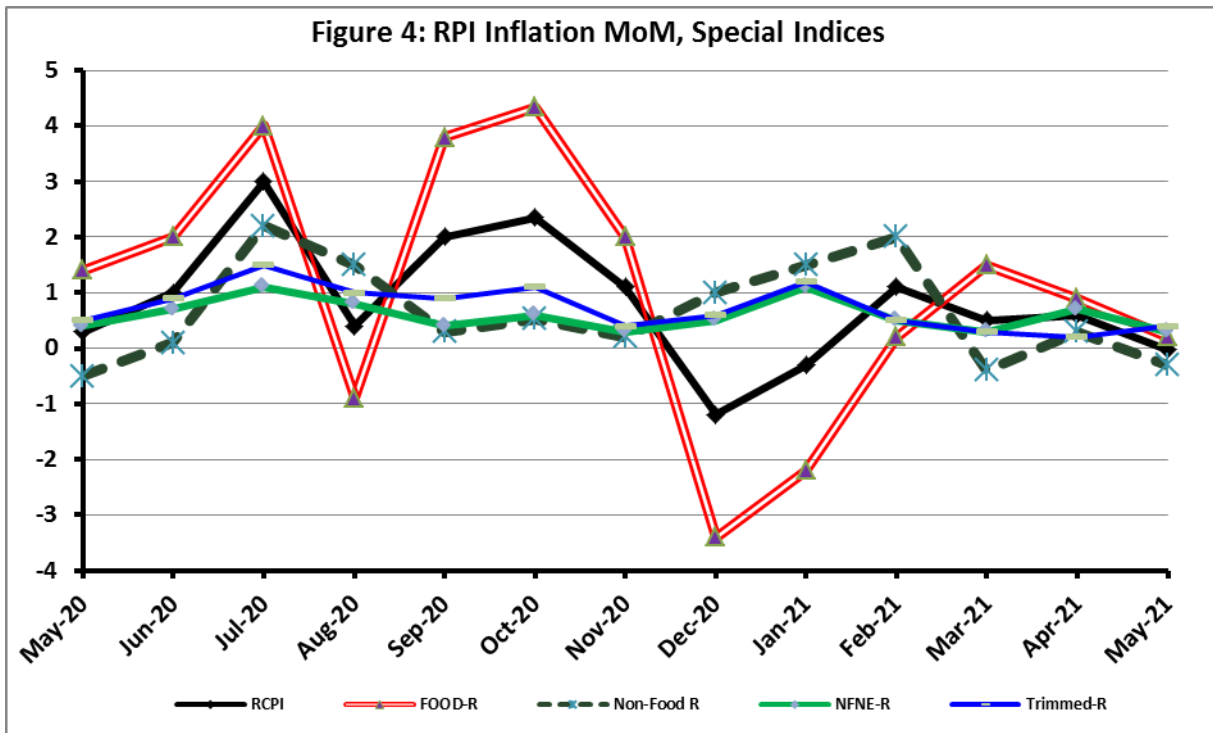
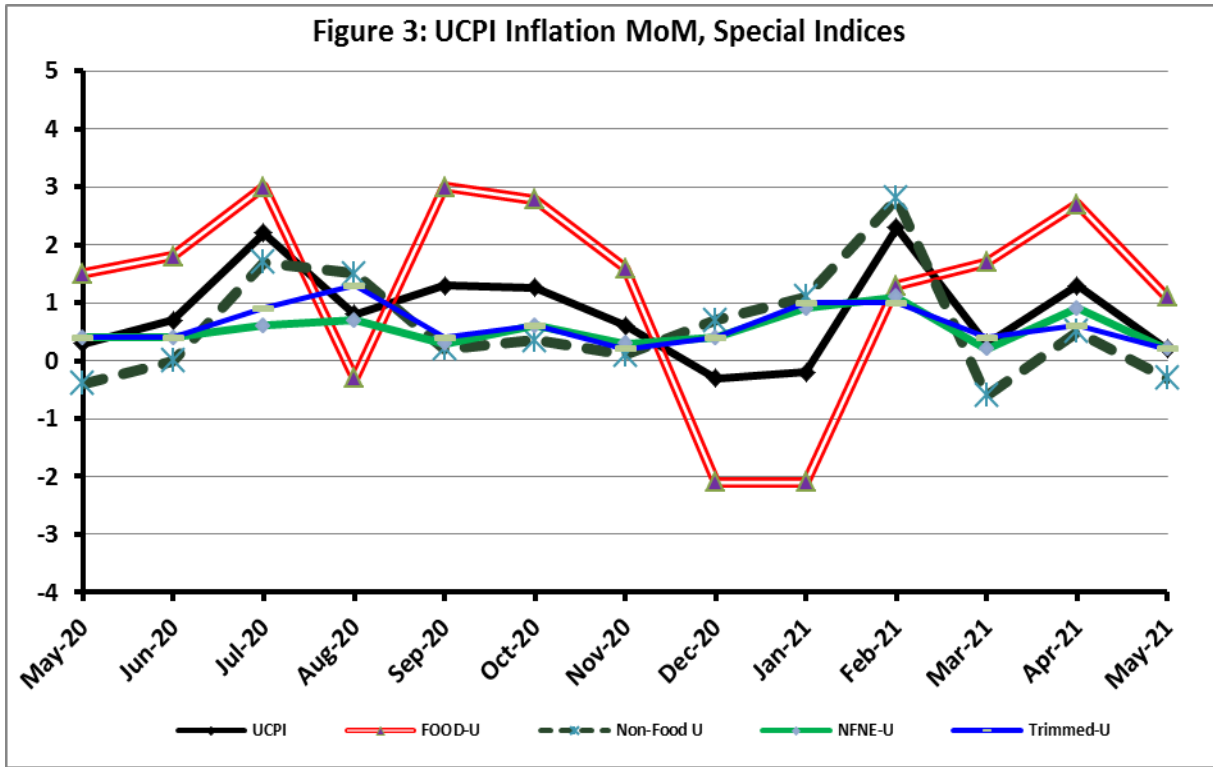


Figure 5: CPI Y.o.Y (National, Urban, Rural)

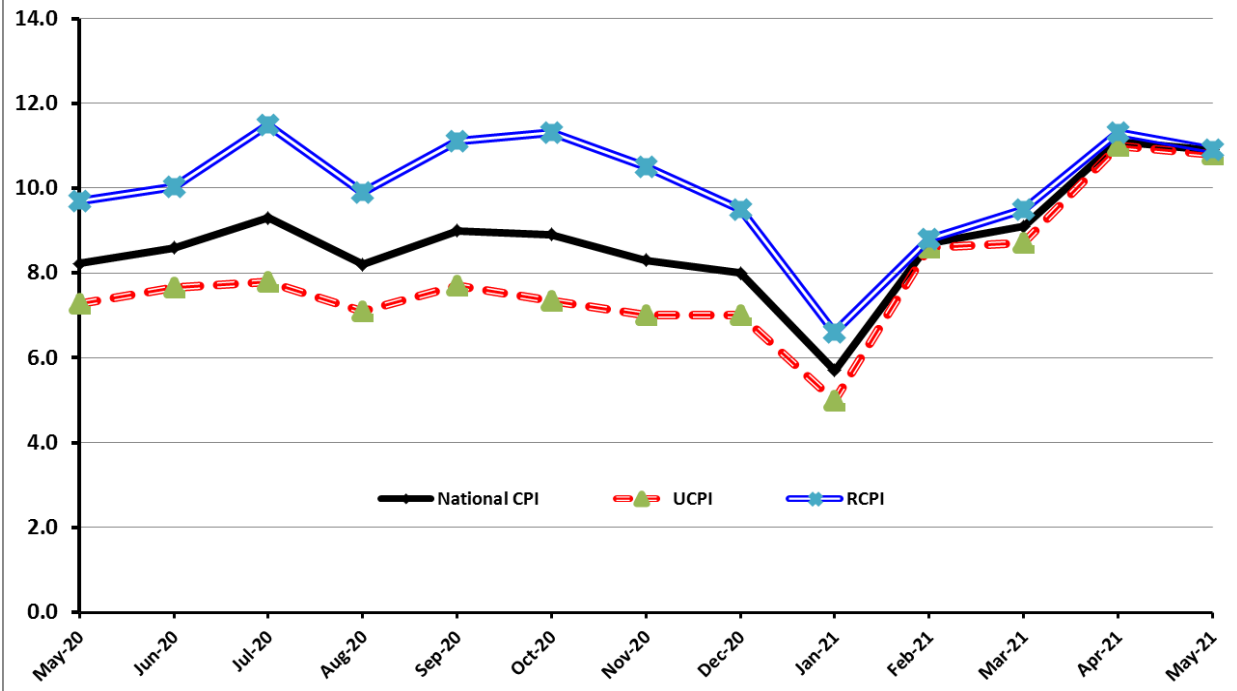
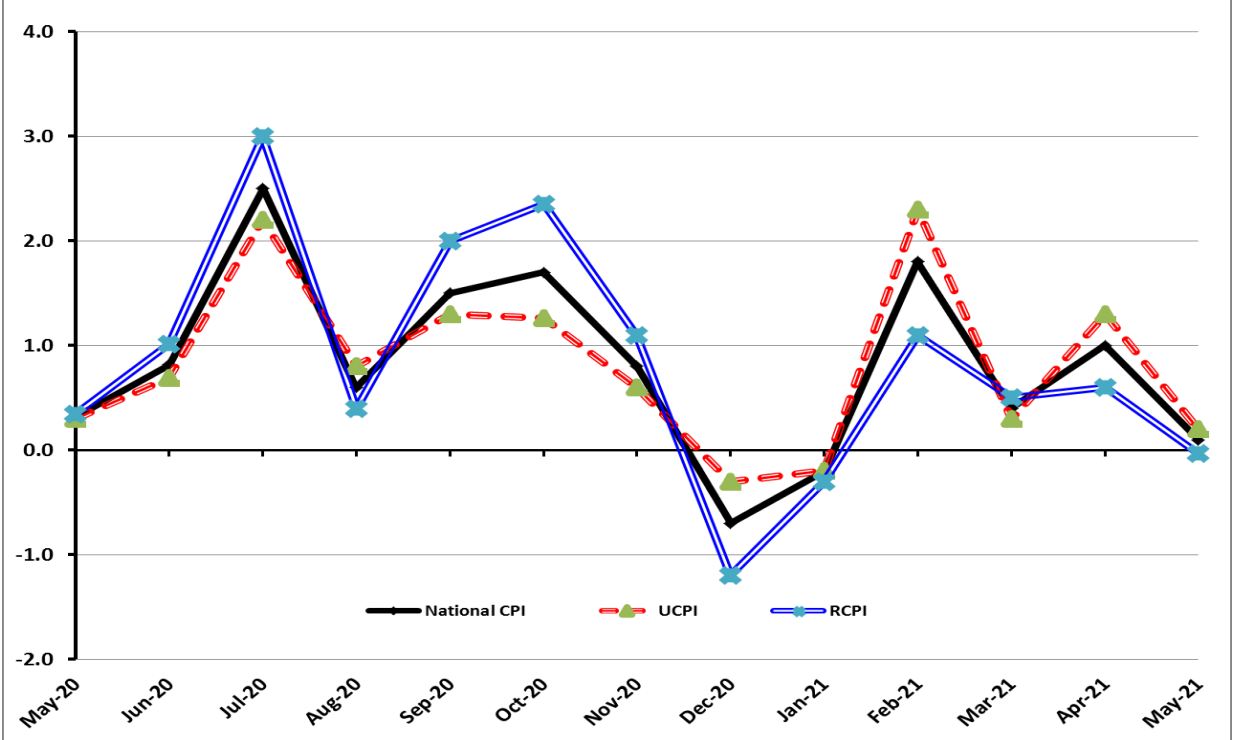


Figure 6: CPI M.o.M (National, Urban, Rural)



I. National Consumer Price Index (N-CPI)

The **National Consumer Price Index** for **May 2021** is increased by **0.10%** over **April 2021** and increased by **10.87%** over corresponding month of the last year i.e. **May 2020**.

Table 1: Consumer Price Index (National) by Group of Commodities and Services (Base 2015-16)									
No	Group	Group Weight (%)	Indices			% Change May 2021 Over		Impact (In % points) May 2021 Over	
			May 2021	Apr 2021	May 2020	Apr 2021	May 2020	Apr 2021	May 2020
	General	100.00	145.24	145.09	131.01	0.10	10.87	0.10	10.87
1.	Food & Non-alcoholic Bev.	34.58	151.72	150.70	132.13	0.67	14.83	0.24	5.17
	<i>Non-perishable Food Items</i>	<i>29.60</i>	<i>154.90</i>	<i>151.63</i>	<i>131.11</i>	<i>2.15</i>	<i>18.15</i>	<i>0.67</i>	<i>5.38</i>
	<i>Perishable Food Items</i>	<i>4.99</i>	<i>132.81</i>	<i>145.16</i>	<i>138.16</i>	<i>-8.51</i>	<i>-3.87</i>	<i>-0.42</i>	<i>-0.20</i>
2.	Alcoholic Bev. & Tobacco	1.02	144.50	144.28	137.65	0.15	4.97	0.00	0.05
3.	Clothing & Footwear	8.60	148.91	148.48	134.58	0.28	10.64	0.03	0.94
4.	Housing, Water, Electricity, Gas & Fuels	23.63	139.49	141.20	128.63	-1.21	8.44	-0.28	1.96
5.	Furnishing & Household Equipment Maintenance	4.10	141.13	140.39	128.74	0.53	9.62	0.02	0.39
6.	Health	2.79	153.03	152.61	140.36	0.27	9.03	0.01	0.27
7.	Transport	5.91	141.62	141.52	124.27	0.08	13.96	0.00	0.78
8.	Communication	2.21	108.61	108.61	106.96	0.00	1.55	0.00	0.03
9.	Recreation & Culture	1.59	125.67	125.17	119.85	0.40	4.86	0.01	0.07
10.	Education	3.79	144.61	144.61	142.40	0.00	1.55	0.00	0.06
11.	Restaurants & Hotels	6.92	142.37	141.55	131.12	0.58	8.58	0.04	0.59
12.	Miscellaneous	4.87	151.85	150.83	137.16	0.68	10.71	0.03	0.55

II. Urban Consumer Price Index (UCPI)

The Urban Consumer Price Index of May 2021 is increased by 0.19% over April 2021 and increased by 10.84% over corresponding month of the last year i.e. May 2020.

Table 2: Consumer Price Index (Urban) by Group of Commodities and Services (Base 2015-16)

No	Group	Group Weight (%)	Indices			% Change May 2021 Over		Impact (In % points) May 2021 Over	
			May 2021	Apr 2021	May 2020	Apr 2021	May 2020	Apr 2021	May 2020
	General	100.00	145.19	144.91	130.99	0.19	10.84	0.19	10.84
1.	Food & Non-alcoholic Bev.	30.42	152.94	151.24	131.55	1.12	16.26	0.36	4.97
	<i>Non-perishable Food Items</i>	<i>25.97</i>	<i>155.36</i>	<i>151.54</i>	<i>130.25</i>	<i>2.52</i>	<i>19.28</i>	<i>0.68</i>	<i>4.98</i>
	<i>Perishable Food Items</i>	<i>4.46</i>	<i>138.85</i>	<i>149.48</i>	<i>139.11</i>	<i>-7.11</i>	<i>-0.19</i>	<i>-0.33</i>	<i>-0.01</i>
2.	Alcoholic Bev.& Tobacco	0.85	153.81	153.57	145.03	0.16	6.05	0.00	0.06
3.	Clothing & Footwear	8.01	146.36	146.21	131.67	0.10	11.16	0.01	0.90
4.	Housing, Water, Electricity, Gas & Fuels	27.03	140.52	142.12	130.22	-1.13	7.91	-0.30	2.13
5.	Furnishing & Household Equip. & Maintenance	4.09	140.17	139.46	128.80	0.51	8.83	0.02	0.36
6.	Health	2.31	153.41	152.72	139.92	0.45	9.64	0.01	0.24
7.	Transport	6.14	142.67	142.56	124.89	0.08	14.24	0.00	0.83
8.	Communication	2.35	110.33	110.33	108.22	0.00	1.95	0.00	0.04
9.	Recreation & Culture	1.73	122.15	121.91	118.12	0.20	3.41	0.00	0.05
10.	Education	4.88	146.71	146.71	144.98	0.00	1.19	0.00	0.06
11.	Restaurants & Hotels	7.41	141.66	140.81	129.80	0.60	9.14	0.04	0.67
12.	Miscellaneous	4.77	151.81	150.56	137.02	0.83	10.79	0.04	0.54

Main contributors to month-on-month and year-on-year percentage changes are given below and detail is given in **Annexure-A**.

1. MONTH-ON-MONTH Top few commodities which varied from previous month are given below: -

FOOD

Increased: Chicken (16.87%), Fruits (10.54%), Wheat flour (9.75%), Mustard oil (5.15%), Meat (4.68%), Sugar (2.57%), Gur (1.99%) and Rice (1.42%).

Decreased: Tomatoes (46.64%), vegetables (18.84%), Onions (13.15%), Eggs (11.58%), Pulse mash (1.37%), Pulse Gram (1.33%), Pulse Moong (1.27%), Wheat (1.16%) and Pulse Masoor (1.12%).

NON-FOOD

Increased: Personal Effects (1.80%), Motor vehicle accessories (1.08%), Washing soap (0.91%) and Drugs & medicines (0.81%).

Decreased: Liquefied Hydrocarbons (10.72%) and Electricity charges (5.61%).

YEAR-ON-YEAR: Top few commodities which varied from previous year i.e. May, 2020 are given below: -

FOOD

Increased: Chicken (59.57%), Eggs (54.96%), Mustard oil (30.75%), Wheat (29.90%), Wheat flour (28.54%), Condiments and Spices (26.71%), Vegetable ghee (22.1%), Sugar (21.62%), Cooking oil (20.62%), Bakery and confectionary (16.81%), Milk (15.41%), Meat (14.15%) and vegetables (12.53%).

Decreased: Onions (31.52%), Pulse Moong (17.22%), Potatoes (15.59%), Pulse Masoor (7.09%) and Besan (1.92%).

NON-FOOD

Increased: Motor fuel (25.43%), Electricity charges (21.83%), Footware (16.27%), Cleaning and laundering (13.45%), Hosiery (12.55%), Clinic fee (12.45%), Woollen garments (12.08%), Cotton cloth (12.07%) and Drugs & medicines (10.76%).

Decreased: Liquefied Hydrocarbons (1.97%)

III. Rural Consumer Price Index (RCPI)

The Rural Consumer Price Index of May 2021 is decreased by 0.03% over April 2021 and increased by 10.91% over corresponding month of the last year i.e. May 2020.

Table 3: Consumer Price Index (Rural) by Group of Commodities and Services (Base 2015-16)

No	Group	Group Weight (%)	Indices			% Change May 2021 Over		Impact (In % points) May 2021 Over	
			May 2021	Apr 2021	May 2020	Apr 2021	May 2020	Apr 2021	May 2020
	General	100.00	145.32	145.37	131.03	-0.03	10.91	-0.03	10.91
1.	Food & Non-alcoholic Bev.	40.87	150.35	150.10	132.78	0.17	13.23	0.07	5.48
	<i>Non-perishable Food Items</i>	<i>35.08</i>	<i>154.39</i>	<i>151.74</i>	<i>132.07</i>	<i>1.75</i>	<i>16.90</i>	<i>0.64</i>	<i>5.98</i>
	<i>Perishable Food Items</i>	<i>5.79</i>	<i>125.80</i>	<i>140.14</i>	<i>137.05</i>	<i>-10.23</i>	<i>-8.21</i>	<i>-0.57</i>	<i>-0.50</i>
2.	Alcoholic Bev. & Tobacco	1.28	135.11	134.91	130.21	0.15	3.76	0.00	0.05
3.	Clothing & Footwear	9.48	152.15	151.38	138.30	0.51	10.01	0.05	1.00
4.	Housing, Water, Electricity, Gas & Fuels	18.49	137.22	139.18	125.12	-1.41	9.67	-0.25	1.71
5.	Furnishing & Household Equip. & Maintenance	4.10	142.57	141.78	128.66	0.56	10.81	0.02	0.44
6.	Health	3.51	152.66	152.51	140.80	0.10	8.42	0.00	0.32
7.	Transport	5.56	139.88	139.78	123.25	0.07	13.49	0.00	0.71
8.	Communication	1.99	105.56	105.56	104.72	0.00	0.80	0.00	0.01
9.	Recreation & Culture	1.38	132.34	131.36	123.12	0.75	7.49	0.01	0.10
10.	Education	2.13	137.36	137.36	133.48	0.00	2.91	0.00	0.06
11.	Restaurants & Hotels	6.19	143.66	142.88	133.51	0.55	7.60	0.03	0.48
12.	Miscellaneous	5.02	151.91	151.22	137.35	0.46	10.60	0.02	0.56

Main contributors to Month-on-Month and Year-on-Year percentage changes are given below and detail is given in **Annexure-B**.

1. MONTH-ON-MONTH Top few commodities which varied from previous month are given below: -

FOOD

Increased: Chicken (22.56%), Potatoes (10.13%), Fruits (7.16%), Meat (5.92%), Gur (5.32%), Wheat Flour (4.11%), Sugar (4.07%), Cooking oil (3.43%), Mustard oil (3.27%), Vegetable ghee (2.82%) and Gram Whole (1.69%).

Decreased: Tomatoes (46.38%), Vegetables (27.02%), Eggs (11.71%), Onions (9.08%) and Wheat (5.21%).

NON-FOOD

Increased: Text Books (1.52%), Mechanical Services (1.00%), Personal Effects (0.91%) and Readymade Garments (0.85%).

Decreased: Liquefied Hydrocarbons (6.52%), Electricity Charges (5.61%) and Motor Fuels (0.62%).

2. YEAR-ON-YEAR: Top few commodities which varied from previous year i.e. May 2020 are given below: -

FOOD

Increased: Chicken (60.76%), Eggs (49.73%), Mustard oil (28.99%), Cooking oil (28.98%), Wheat (27.66%), Wheat Flour (26.02%), Vegetable ghee (25.35%), Sugar (21.67%), Wheat Products (18.33%), Meat (16.33%) and Rice (11.93%).

Decreased: Onions (34.37%), Pulse Moong (18.79%), Potatoes (12.45%), Fruits (5.11%), Pulse Masoor (4.76%) and Besan (2.01%).

NON-FOOD

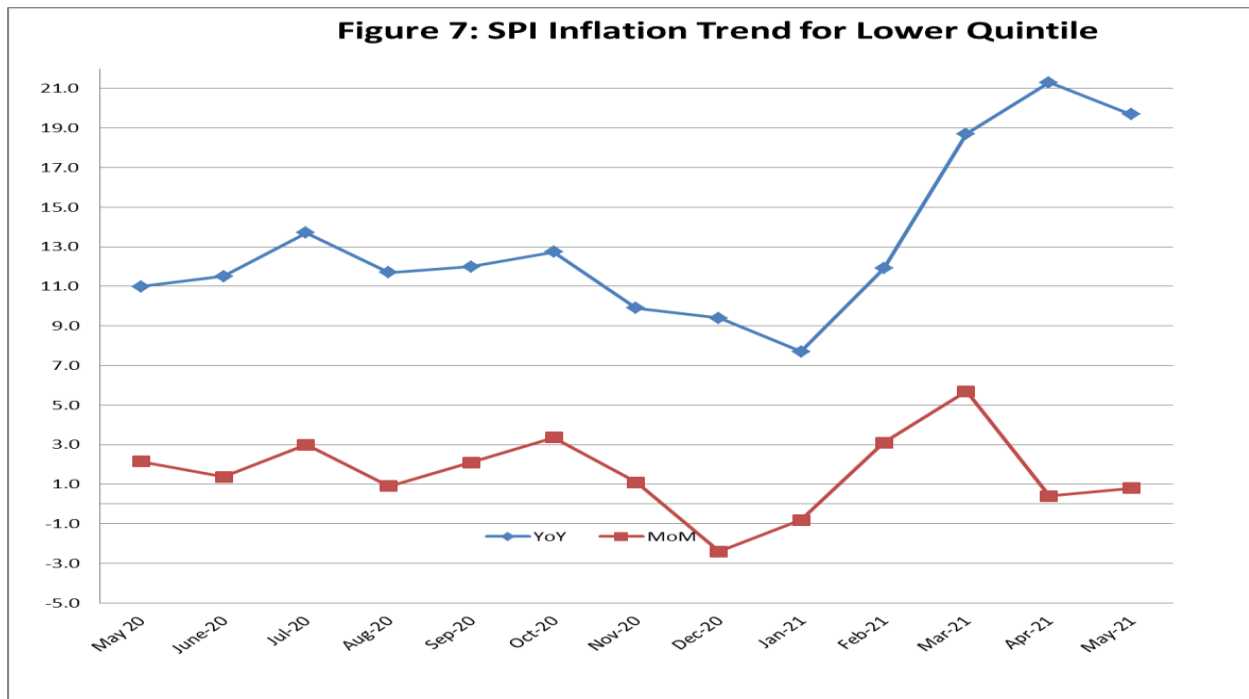
Increased: Motor Fuels (26.97%), Electricity Charges (21.83%), Clinic Fee (16.41%), Hosiery (15.54%), Plastic Products (13.7%), Woolen Cloth (13.31%), Household Equipment (13.12%), Cotton Cloth (12.48%) and Stationery (10.30%).

IV. Sensitive Price Indicator

Quintile-wise percentage changes YoY and MoM are given below in Table 4. The series from May 2020 to May 2021 is also graphed below in Figure 7.

Table 4: Sensitive Price Indicator (Base 2015-16)					
Quintiles	Indices			% Change May 2021 Over	
	May 2021	April, 2021	May 2020	April, 2021	May, 2020
1	160.09	158.83	133.72	0.79	19.72
2	150.06	148.76	128.32	0.87	16.94
3	151.47	149.95	130.44	1.01	16.12
4	148.11	146.45	127.31	1.13	16.34
5	149.36	148.11	128.66	0.84	16.09
Combined	149.36	148.02	127.76	0.91	16.91

Table 4.1 : Weekly Percentage Change of SPI During May - 2021				
Quintiles	% Change with Previous week			
	06-05-2021	13-05-2021	20-05-2021	27-05-2021
Quintile 1	0.37	0.00	0.66	-0.48
Combined	0.50	0.00	0.82	-0.63



V. Wholesale Price Index

The Wholesale Price Index for May, 2021 increased by **0.30%** over April, 2021. It increased by 19.39% over the corresponding month of the last year. YoY and MoM movements, from May, 2020 to May, 2021 are also graphed below in Figure 8.

Table 5: Wholesale Price Index by Group of Commodities (Base 2015-16)

No	Group	Group Weight (%)	Indices			% Change May 2021 Over		Impact (In % points) May 2021 Over	
			May 2021	Apr 2021	May 2020	Apr 2021	May 2020	Apr 2021	May 2020
	General	100.00	162.64	162.15	136.23	0.30	19.39	0.30	19.39
1	Agriculture Forestry & Fishery	25.77	166.79	164.66	141.78	1.29	17.64	0.34	4.73
2	Ores/Minerals, Elec., Gas & Water	12.01	165.94	169.94	161.34	-2.35	2.85	-0.30	0.41
3	Food, Beverages, Tobacco, Textiles, Leather	31.11	159.26	157.69	135.41	1.00	17.61	0.30	5.45
	i. Food Products, Beverages & Tobacco	20.07	154.57	151.76	132.30	1.85	16.83	0.35	3.28
	ii. Textiles & Apparels	10.33	171.11	171.86	142.60	-0.44	19.99	-0.05	2.16
	iii. Leather Products	0.71	119.35	119.35	118.88	0.00	0.40	0.00	0.00
4	Other Transportable Goods	22.40	162.47	163.00	117.64	-0.33	38.11	-0.07	7.37
5	Metal Product, Machinery & Equipment	8.72	158.28	157.76	135.94	0.33	16.43	0.03	1.43

Main contributors to month-on-month and year-on-year percentage changes are given below and detail is given in **Annexure-C**.

1. MONTH-ON-MONTH Top few commodities which varied from previous month are given below: -

Increased: Poultry (18.38%), Fruits (18.34%), Bajra (15.62%), Potatoes (6.60%), Sugar Refined (5.82%), Wheat Flour (4.42%), Meat (3.38%), Fibre Crops (2.81%) and Oil Seeds (2.44%).

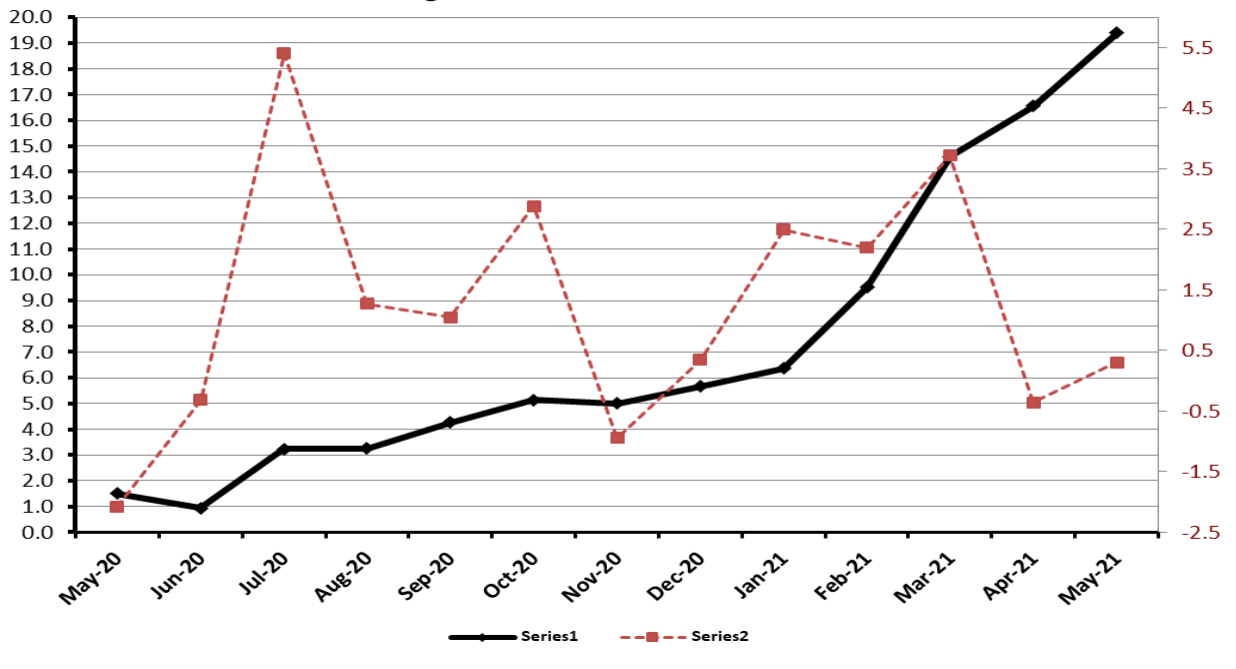
Decreased: Vegetables (21.67%), Eggs (12.07%), Maize (6.10%), Jowar (5.22%), Electrical Energy (5.19%), Kerosene Oil (1.27%) and Diesel Oil (1.26%).

2. YEAR-ON-YEAR Top few commodities which varied from previous year i.e. May, 2020 are given below: -

Increased: Furnace Oil (117.59%), Bajra (70.09%), Kerosene Oil (68.63%), Eggs (63.74%), Poultry (60.44%), Diesel Oil (52.41%), Cotton Fabrics (37.56%), Timber (37.19%), Wheat (33.47%), Motor Spirit (31.44%), Wheat Flour (28.28%), Vegetable Oils (27.96%), Vegetable Ghee (27.11%) and Sugar Refined (21.12%).

Decreased: Potatoes (15.61%) and Hides, Skins & Fur Skins, Raw (12.26%).

Figure 8: WPI Inflation Trend



Annexure A:CPI (Urban) Index Numbers by Commodity Groups & Commodities (2015-16=100)

Item and Specification	Weight	Index Numbers			% Change in May 2021 over	
		May 21	Apr 21	May 20	Apr 2021	May 2020
General	100.0000	145.19	144.91	130.99	+ 0.19	+ 10.84
Food and non-alcoholic Bevera	30.4215	152.94	151.24	131.55	+ 1.12	+ 16.26
01 Wheat	0.6120	151.98	153.76	117.00	- 1.16	+ 29.90
02 Wheat flour	3.0075	149.63	136.34	116.41	+ 9.75	+ 28.54
03 Wheat products	0.0936	159.69	159.55	124.64	+ 0.09	+ 28.12
04 Besan	0.0830	125.41	126.22	127.86	- 0.64	- 1.92
05 Rice	1.1804	144.34	142.32	133.45	+ 1.42	+ 8.16
06 Bakery and confectionary	0.4770	147.58	145.53	126.34	+ 1.41	+ 16.81
07 Nimco	0.1224	142.81	142.55	125.49	+ 0.18	+ 13.80
08 Meat	2.0411	167.61	160.11	146.83	+ 4.68	+ 14.15
09 Chicken	1.3631	216.74	185.45	135.83	+ 16.87	+ <u>59.57</u>
10 Fish	0.3855	115.33	115.17	114.13	+ 0.14	+ 1.05
11 Milk fresh	7.1070	140.61	140.16	121.83	+ 0.32	+ 15.41
12 Milk products	0.6407	144.80	143.87	124.94	+ 0.65	+ 15.90
13 Milk powder	0.3106	138.07	136.98	129.91	+ 0.80	+ 6.28
14 Eggs	0.5083	168.95	191.07	109.03	- 11.58	+ <u>54.96</u>
15 Butter	0.0932	193.07	191.73	170.16	+ 0.70	+ 13.46
16 Mustard oil	0.0120	164.33	156.28	125.68	+ 5.15	+ 30.75
17 Cooking oil	1.1016	174.63	174.51	144.78	+ 0.07	+ 20.62
18 Vegetable ghee	1.0324	182.53	182.31	149.49	+ 0.12	+ 22.10
19 Dry fruits	0.3299	139.93	141.82	129.72	- 1.33	+ 7.87
20 Fresh fruits	1.4363	176.39	159.57	168.95	+ 10.54	+ 4.40
21 Pulse Masoor	0.1624	106.31	107.51	114.42	- 1.12	- 7.09
22 Pulse Moong	0.1697	146.01	147.89	176.38	- 1.27	- 17.22
23 Pulse Mash	0.1152	112.46	114.02	107.89	- 1.37	+ 4.24
24 Pulse Gram	0.1660	124.31	125.99	125.84	- 1.33	- 1.22
25 Gram Whole	0.0912	129.71	129.68	129.92	+ 0.02	- 0.16
26 Beans	0.0408	159.79	160.06	144.87	- 0.17	+ 10.30
27 Potatoes	0.4496	191.01	189.67	226.28	+ 0.71	- 15.59
28 Onions	0.5928	69.22	79.70	101.08	- 13.15	- 31.52
29 Tomatoes	0.3459	65.82	123.36	62.71	- 46.64	+ 4.96
30 Fresh vegetables	1.5306	125.32	154.42	111.37	- 18.84	+ 12.53
31 Sugar	1.1130	159.39	155.40	131.06	+ 2.57	+ 21.62
32 Gur	0.0379	147.35	144.48	140.83	+ 1.99	+ 4.63
33 Honey	0.1017	131.29	131.22	118.89	+ 0.05	+ 10.43
34 Sweetmeat	0.3535	152.82	150.50	139.49	+ 1.54	+ 9.56
35 Ice cream	0.1044	142.53	137.47	126.61	+ 3.68	+ 12.57
36 Condiments and Spices	1.3340	210.85	211.18	166.40	- 0.16	+ 26.71
37 Dessert preparation	0.0419	131.78	131.74	124.02	+ 0.03	+ 6.26
38 Tea	0.8427	140.84	140.83	140.74	+ 0.01	+ 0.07
39 Beverages	0.8906	131.05	130.93	126.47	+ 0.09	+ 3.62
Alcoholic Beverages, Tobacco	0.8540	153.81	153.57	145.03	+ 0.16	+ 6.05
40 Cigarettes	0.7167	141.09	141.06	135.09	+ 0.02	+ 4.44
41 Pan prepared	0.1373	220.20	218.90	196.90	+ 0.59	+ 11.83
Clothing and footwear	8.0096	146.36	146.21	131.67	+ 0.10	+ 11.16
42 Cotton cloth	2.2227	150.21	150.16	134.03	+ 0.03	+ 12.07
43 Woolen cloth	0.8361	141.18	141.06	126.22	+ 0.09	+ 11.85
44 Readymade garments	1.3196	138.92	138.91	130.20	+ 0.01	+ 6.70
45 Woolen readymade garments	0.4307	142.21	142.21	126.88	+ 0.00	+ 12.08
46 Tailoring	1.0741	150.71	149.88	140.36	+ 0.55	+ 7.37
47 Hosiery	0.4070	143.63	143.52	127.61	+ 0.08	+ 12.55
48 Dopatta	0.1713	129.91	129.91	124.09	+ 0.00	+ 4.69
49 Cleaning and laundering	0.0665	148.23	147.95	130.66	+ 0.19	+ 13.45
50 Footware	1.4816	150.75	150.72	129.66	+ 0.02	+ 16.27
Housing, water, Elec., Gas an	27.0332	140.52	142.12	130.22	- 1.13	+ 7.91
51 House rent	19.2558	138.09	138.09	130.02	+ 0.00	+ 6.21
52 Construction input items	0.3765	153.18	153.04	143.58	+ 0.09	+ 6.69
53 Construction wage rates	0.2025	155.01	154.99	148.80	+ 0.01	+ 4.17
54 Water supply	0.5269	158.39	158.19	143.78	+ 0.13	+ 10.16
55 Garbage collection	0.1064	173.90	173.90	156.98	+ 0.00	+ 10.78
56 Electricity charges	4.5562	131.62	139.44	108.04	- 5.61	+ 21.83
57 Gas charges	1.0807	216.94	216.94	216.94	+ 0.00	+ 0.00

Annexure A:CPI (Urban) Index Numbers by Commodity Groups & Commodities (2015-16=100)

	Item and Specification	Weight	Index Numbers			% Change in May 2021 over	
			May 21	Apr 21	May 20	Apr 2021	May 2020
58	Liquified Hydrocarbons	0.5064	125.78	140.88	128.31	- 10.72	- 1.97
59	Solid Fuel	0.4218	120.56	120.94	114.43	- 0.31	+ 5.36
	Furnishing and household equi	4.0937	140.17	139.46	128.80	+ 0.51	+ 8.83
60	Furniture and furnishing	0.4750	141.22	140.98	129.15	+ 0.17	+ 9.35
61	Carpets	0.0308	113.24	113.21	111.16	+ 0.03	+ 1.87
62	Household textiles	0.3420	135.27	134.76	125.82	+ 0.38	+ 7.51
63	Household equipment	1.0032	141.72	140.94	128.00	+ 0.55	+ 10.72
64	Plastic products	0.0536	122.61	122.42	116.84	+ 0.16	+ 4.94
65	Major tools & equipment	0.0084	138.51	138.44	120.39	+ 0.05	+ 15.05
66	Washing soap/detergents/match	1.4112	144.18	142.88	129.65	+ 0.91	+ 11.21
67	Household servant	0.7695	134.66	134.66	131.02	+ 0.00	+ 2.78
	Health	2.3098	153.41	152.72	139.92	+ 0.45	+ 9.64
68	Drugs and medicines	1.0735	154.25	153.01	139.26	+ 0.81	+ 10.76
69	Therapeutic Appliances and Eq	0.0054	116.60	116.60	107.20	+ 0.00	+ 8.77
70	Doctor (MBBS) clinic fee	0.4044	190.81	190.39	169.68	+ 0.22	+ 12.45
71	Dental services	0.0156	128.73	128.73	118.61	+ 0.00	+ 8.53
72	Medical tests	0.2367	134.08	133.70	124.35	+ 0.28	+ 7.82
73	Hospitals services	0.5742	134.49	134.49	127.49	+ 0.00	+ 5.49
	Transport	6.1368	142.67	142.56	124.89	+ 0.08	+ 14.24
74	Motor vehicles	0.8097	154.41	154.08	146.86	+ 0.21	+ 5.14
75	Motor vehicle accessories	0.1941	141.66	140.14	130.09	+ 1.08	+ 8.89
76	Motor fuel	2.9088	150.42	151.13	119.92	- 0.47	+ 25.43
77	Mechanical services	0.4290	137.66	137.20	130.66	+ 0.34	+ 5.36
78	Motor vehicle tax	0.0482	126.72	126.72	126.72	+ 0.00	+ 0.00
79	Transport services	1.7470	126.12	124.98	120.93	+ 0.91	+ 4.29
	Communication	2.3536	110.33	110.33	108.22	+ 0.00	+ 1.95
80	Postal services	0.0190	162.27	162.27	147.05	+ 0.00	+ 10.35
81	Communication apparatus	0.4524	119.49	119.49	118.74	+ 0.00	+ 0.63
82	Communication Services	1.8822	107.61	107.61	105.30	+ 0.00	+ 2.19
	Recreation and culture	1.7301	122.15	121.91	118.12	+ 0.20	+ 3.41
83	Recreation and culture	0.6478	113.75	113.50	110.31	+ 0.22	+ 3.12
84	Text books	0.6655	121.19	120.80	117.25	+ 0.32	+ 3.36
85	Newspapers	0.0716	151.55	151.55	151.55	+ 0.00	+ 0.00
86	stationery	0.3452	133.70	133.69	127.51	+ 0.01	+ 4.85
	Education	4.8807	146.71	146.71	144.98	+ 0.00	+ 1.19
87	Education	4.8807	146.71	146.71	144.98	+ 0.00	+ 1.19
	Restaurants and hotels	7.4050	141.66	140.81	129.80	+ 0.60	+ 9.14
88	Readymade food	5.5235	143.50	142.38	129.07	+ 0.79	+ 11.18
89	Marriage Hall Charges	1.7514	137.97	137.94	133.41	+ 0.02	+ 3.42
90	Accommodation Services	0.1301	113.20	113.20	112.40	+ 0.00	+ 0.71
	Misc. goods and services	4.7720	151.81	150.56	137.02	+ 0.83	+ 10.79
91	Personal Grooming Services	0.8001	138.14	137.97	126.43	+ 0.12	+ 9.26
92	Electrical Appliances for Per	0.0465	118.48	118.48	116.78	+ 0.00	+ 1.46
93	Appliances/Articles/Products	2.9807	142.85	141.97	127.73	+ 0.62	+ 11.84
94	Personal Effects n.e.c.	0.9447	193.32	189.90	176.28	+ 1.80	+ 9.67

Annexure B:CPI (Rural) Index Numbers by Commodity Groups & Commodities (2015-16=100)

Item and Specification	Weight	Index Numbers			% Change in May 2021 over	
		May 21	Apr 21	May 20	Apr 2021	May 2020
General	100.0000	145.32	145.37	131.03	- 0.03	+ 10.91
Food and non-alcoholic Beverage	40.8668	150.35	150.10	132.78	+ 0.17	+ 13.23
01 Wheat	3.4736	147.75	155.87	115.74	- 5.21	+ 27.66
02 Wheat Flour	3.4297	148.79	142.91	118.07	+ 4.11	+ 26.02
03 Wheat Products	0.1068	148.35	148.18	125.37	+ 0.11	+ 18.33
04 Besan	0.0728	127.99	127.26	130.61	+ 0.57	- 2.01
05 Rice	1.5501	186.09	185.87	166.26	+ 0.12	+ 11.93
06 Bakery and Confectionary	0.3702	143.64	143.24	127.22	+ 0.28	+ 12.91
07 Nimco	0.0774	131.13	130.55	118.14	+ 0.44	+ 11.00
08 Meat	1.7146	170.06	160.55	146.19	+ 5.92	+ 16.33
09 Chicken	1.4641	224.65	183.30	139.74	+ 22.56	+ 60.76
10 Fish	0.2640	125.47	125.61	124.58	- 0.11	+ 0.71
11 Milk fresh	10.3803	133.40	132.96	122.13	+ 0.33	+ 9.23
12 Milk products	0.9624	132.31	131.91	123.49	+ 0.30	+ 7.14
13 Milk powder	0.1062	128.28	128.02	123.86	+ 0.20	+ 3.57
14 Eggs	0.5665	164.52	186.33	109.88	- 11.71	+ 49.73
15 Butter	0.3333	145.69	145.69	127.66	+ 0.00	+ 14.12
16 Mustard oil	0.0136	165.37	160.13	128.20	+ 3.27	+ 28.99
17 Cooking oil	0.6011	194.74	188.29	150.99	+ 3.43	+ 28.98
18 Vegetable ghee	2.3764	199.78	194.31	159.38	+ 2.82	+ 25.35
19 Dry fruits	0.2496	155.92	156.00	138.56	- 0.05	+ 12.53
20 Fresh fruits	1.4505	168.04	156.81	177.09	+ 7.16	- 5.11
21 Pulse Masoor	0.2076	112.10	112.81	117.70	- 0.63	- 4.76
22 Pulse Moong	0.2510	154.72	155.79	190.51	- 0.69	- 18.79
23 Pulse Mash	0.1465	111.60	111.20	105.59	+ 0.36	+ 5.69
24 Pulse Gram	0.2751	125.90	126.55	127.52	- 0.51	- 1.27
25 Gram Whole	0.1116	126.66	124.55	124.51	+ 1.69	+ 1.73
26 Beans	0.0896	168.39	168.06	162.13	+ 0.20	+ 3.86
27 Potatoes	0.7437	207.18	188.13	236.64	+ 10.13	- 12.45
28 Onions	0.8965	64.40	70.83	98.12	- 9.08	- 34.37
29 Tomatoes	0.5069	57.66	107.54	52.54	- 46.38	+ 9.74
30 Fresh Vegetables	2.0947	105.43	144.47	106.69	- 27.02	- 1.18
31 Sugar	2.0296	159.69	153.44	131.25	+ 4.07	+ 21.67
32 Gur	0.1522	146.81	139.40	137.28	+ 5.32	+ 6.94
33 Honey	0.0296	135.70	135.28	122.76	+ 0.31	+ 10.54
34 Sweetmeat	0.3967	138.89	135.33	126.60	+ 2.63	+ 9.71
35 Ice Cream	0.0568	140.13	136.78	126.39	+ 2.45	+ 10.87
36 Condiments and Spices	1.4919	187.17	188.48	180.00	- 0.70	+ 3.98
37 Dessert Preparation	0.0133	132.10	130.73	118.49	+ 1.05	+ 11.49
38 Tea	1.2566	138.10	138.10	137.87	+ 0.00	+ 0.17
39 Beverages	0.5537	132.90	132.43	126.34	+ 0.35	+ 5.19
Alcoholic Beverages, Tobacco	1.2786	135.11	134.91	130.21	+ 0.15	+ 3.76
40 Cigarettes	1.2364	133.73	133.57	129.28	+ 0.12	+ 3.44
41 Pan Prepared	0.0422	175.70	174.12	157.44	+ 0.91	+ 11.60
Clothing and footwear	9.4826	152.15	151.38	138.30	+ 0.51	+ 10.01
42 Cotton Cloth	2.8381	168.18	167.37	149.52	+ 0.48	+ 12.48
43 Woolen Cloth	1.0959	143.17	142.29	126.35	+ 0.62	+ 13.31
44 Readymade Garments	1.1345	143.13	141.92	133.73	+ 0.85	+ 7.03
45 Woolen Readymade Garments	0.5401	143.31	143.31	130.27	+ 0.00	+ 10.01
46 Tailoring	1.2999	150.56	149.80	137.50	+ 0.51	+ 9.50
47 Hosiery	0.4322	182.11	181.29	157.62	+ 0.45	+ 15.54
48 Dupatta	0.2078	139.40	138.50	131.99	+ 0.65	+ 5.61
49 Cleaning and Laundering	0.0176	141.72	141.72	130.42	+ 0.00	+ 8.66
50 Footware	1.9165	137.18	136.59	130.41	+ 0.43	+ 5.19
Housing, water, Elec., Gas an	18.4853	137.22	139.18	125.12	- 1.41	+ 9.67
51 House Rent	8.6110	138.56	138.56	130.00	+ 0.00	+ 6.58
52 Construction Input Items	0.6306	129.70	129.96	121.22	- 0.20	+ 7.00
53 Construction Wage Rates	0.2526	156.63	156.58	149.47	+ 0.03	+ 4.79
54 Water Supply	0.0645	216.56	216.56	158.09	+ 0.00	+ 36.99
55 Garbage Collection	0.0080	150.24	144.90	138.15	+ 3.69	+ 8.75
56 Electricity Charges	3.4431	131.62	139.44	108.04	- 5.61	+ 21.83
57 Liquified Hydrocarbons	0.9994	121.63	130.12	116.57	- 6.52	+ 4.34

Annexure B:CPI (Rural) Index Numbers by Commodity Groups & Commodities (2015-16=100)

Item and Specification	Weight	Index Numbers			% Change in May 2021 over	
		May 21	Apr 21	May 20	Apr 2021	May 2020
58 Solid Fuel	4.4761	141.24	141.39	129.46	- 0.11	+ 9.10
<i>Furnishing and household equi</i>	4.1031	142.57	141.78	128.66	+ 0.56	+ 10.81
59 Furniture and Furnishing	0.5786	142.28	142.28	131.41	+ 0.00	+ 8.27
60 Household Textiles	0.4382	133.67	133.67	127.57	+ 0.00	+ 4.78
61 Household Equipment	1.2774	150.52	149.40	133.06	+ 0.75	+ 13.12
62 Plastic Products	0.0776	156.93	155.81	138.02	+ 0.72	+ 13.70
63 Major Tools and Equipment	0.0324	127.16	125.07	115.93	+ 1.67	+ 9.69
64 Washing Soaps, Detergents and	1.6989	138.63	137.65	124.52	+ 0.71	+ 11.33
<i>Health</i>	3.5141	152.66	152.51	140.80	+ 0.10	+ 8.42
65 Drugs and Medicines	1.5792	153.89	153.55	142.02	+ 0.22	+ 8.36
66 Doctor Clinic Fee	0.5128	187.44	187.44	161.02	+ 0.00	+ 16.41
67 Dental Services	0.0181	132.61	132.61	122.97	+ 0.00	+ 7.84
68 Medical Tests	0.3967	153.97	153.97	143.22	+ 0.00	+ 7.51
69 Hospitals Services	1.0073	132.88	132.88	127.98	+ 0.00	+ 3.83
<i>Transport</i>	5.5580	139.88	139.78	123.25	+ 0.07	+ 13.49
70 Motor Vehicles	0.7305	134.28	133.02	127.10	+ 0.95	+ 5.65
71 Motor Vehicles Accessories	0.1572	140.39	139.68	135.49	+ 0.51	+ 3.62
72 Motor Fuels	2.4932	148.39	149.32	116.87	- 0.62	+ 26.97
73 Mechanical Services	0.3645	156.82	155.26	153.45	+ 1.00	+ 2.20
74 Motor Vehicle Tax	0.0174	127.98	127.98	127.98	+ 0.00	+ 0.00
75 Transport Services	1.7952	126.97	126.27	123.29	+ 0.55	+ 2.98
<i>Communication</i>	1.9940	105.56	105.56	104.72	+ 0.00	+ 0.80
76 Postal Services	0.0070	149.43	149.43	149.43	+ 0.00	+ 0.00
77 Communication Apparatus	0.3362	120.50	120.50	118.95	+ 0.00	+ 1.30
78 Communication Services	1.6508	102.33	102.33	101.63	+ 0.00	+ 0.69
<i>Recreation and culture</i>	1.3764	132.34	131.36	123.12	+ 0.75	+ 7.49
79 Recreation and Culture	0.4763	134.87	133.93	128.38	+ 0.70	+ 5.06
80 Text Books	0.5047	119.06	117.28	110.23	+ 1.52	+ 8.01
81 Newspapers	0.0230	165.56	165.56	161.68	+ 0.00	+ 2.40
82 Stationery	0.3724	145.04	145.04	131.49	+ 0.00	+ 10.30
<i>Education</i>	2.1342	137.36	137.36	133.48	+ 0.00	+ 2.91
83 Education	2.1342	137.36	137.36	133.48	+ 0.00	+ 2.91
<i>Restaurants and hotels</i>	6.1895	143.66	142.88	133.51	+ 0.55	+ 7.60
84 Readymade Food	3.8001	154.61	153.33	138.56	+ 0.83	+ 11.58
85 Marriage Hall Charges	2.2525	127.75	127.75	126.93	+ 0.00	+ 0.65
86 Accommodation Services	0.1369	101.62	101.62	101.59	+ 0.00	+ 0.03
<i>Misc. goods and services</i>	5.0174	151.91	151.22	137.35	+ 0.46	+ 10.60
87 Personal Grooming Services	1.5363	157.32	156.51	137.84	+ 0.52	+ 14.13
88 Appliances/Articles/Products	2.2746	132.25	132.14	120.95	+ 0.08	+ 9.34
89 Personal Effects n.e.c.	1.2065	182.09	180.45	167.64	+ 0.91	+ 8.62

Annexure C: Wholesale Price Indices by Major Groups & Commodities (2015-16=100)

Item and Specification	Weight	Index Numbers			% Change in May 2021 over			
		May 21	Apr 21	May 20	Apr 2021	May 2020		
General	100.0000	162.64	162.15	136.23	+	0.30	+	19.39
Agriculture Forestry & Fisher	25.7674	166.79	164.66	141.78	+	1.29	+	17.64
001 Wheat	0.6297	151.25	150.93	113.32	+	0.21	+	33.47
002 Maize	0.6764	168.25	179.18	151.28	-	6.10	+	11.22
003 Rice	2.4413	173.62	172.73	150.89	+	0.52	+	15.06
004 Sorghum / Jowar	0.0214	213.46	225.21	198.09	-	5.22	+	7.76
005 Millet / Bajra	0.0374	207.70	179.64	122.11	+	15.62	+	<u>70.09</u>
006 Vegetables	1.2441	111.63	142.51	101.30	-	21.67	+	10.20
007 Fresh Fruits	1.5144	217.08	183.43	168.40	+	18.34	+	28.91
008 Dry Fruits	0.2478	138.89	137.59	129.04	+	0.94	+	7.63
009 Cotton Seeds	1.1511	141.41	141.27	132.08	+	0.10	+	7.06
010 Other Oil Seeds	0.0722	159.83	156.03	134.26	+	2.44	+	19.05
011 Edible Roots / Potatoes	0.2540	230.01	215.77	272.57	+	6.60	-	15.61
012 Stimulant & Spice Crops	0.1634	287.04	288.36	274.38	-	0.46	+	4.61
013 Pulses	0.4901	132.43	132.84	129.32	-	0.31	+	2.40
014 Sugar Crops	1.0725	139.03	139.03	121.83	+	0.00	+	14.12
015 Fibre Crops	5.3169	217.43	211.48	172.18	+	2.81	+	26.28
016 Unmanufactured Tobacco	0.0742	237.54	234.26	182.52	+	1.40	+	30.14
017 Poultry	0.5633	216.18	182.62	134.74	+	18.38	+	<u>60.44</u>
018 Raw Milk from Bovine Animals	7.0279	139.47	138.90	123.78	+	0.41	+	12.68
019 Eggs	0.5034	169.68	192.98	103.63	-	12.07	+	<u>63.74</u>
020 Raw Animal Materials / Wool	0.0351	107.00	106.77	105.33	+	0.22	+	1.59
021 Hides, Skins & Fur Skins, Raw	0.4834	34.06	34.99	38.82	-	2.66	-	12.26
022 Fuel Wood in Logs	0.0179	127.84	128.52	115.92	-	0.53	+	10.28
023 Fish Live Fresh or Chilled	1.7295	158.03	157.95	155.00	+	0.05	+	1.95
Ores/Minerals, Elec., Gas & W	12.0069	165.94	169.94	161.34	-	2.35	+	2.85
024 Coal not Agglomerated	0.7508	75.79	75.79	75.79	+	0.00	+	0.00
025 Natural Gas Liquefied	5.7065	201.67	202.66	196.18	-	0.49	+	2.80
026 Salt & Pure Sodium Chloride	0.0584	169.23	168.93	161.99	+	0.18	+	4.47
027 Electrical Energy	5.4912	141.10	148.83	136.82	-	5.19	+	3.13
Food, Beverages, Tobacco, Textile	31.1122	159.26	157.69	135.41	+	1.00	+	17.61
Food Products, Beverages	20.0718	154.57	151.76	132.30	+	1.85	+	16.83
028 Meat of Animals	3.4559	172.16	166.53	149.35	+	3.38	+	15.27
029 Vegetables & Fruit Juice	0.0058	122.54	122.54	112.76	+	0.00	+	8.67
030 Dried Fruits & Nuts	0.1733	177.62	177.41	157.54	+	0.12	+	12.75
031 Fruit Juices	0.3880	131.57	131.45	123.23	+	0.09	+	6.77
032 Vegetable Oils Refined	1.9242	157.67	156.71	123.22	+	0.61	+	27.96
033 Vegetable Ghee	1.5632	187.81	185.16	147.75	+	1.43	+	27.11
034 Oil Cakes	0.9611	168.14	167.54	140.16	+	0.36	+	19.96
035 Processed Liquid Milk	4.4437	143.51	143.47	134.03	+	0.03	+	7.07
036 Milk & Cream in Solid Form	0.0316	135.47	135.47	124.83	+	0.00	+	8.52
037 Ice Cream	0.0047	138.52	137.64	117.05	+	0.64	+	18.34
038 Dairy Products N.E.C	0.0117	138.29	141.23	131.25	-	2.08	+	5.36
039 Wheat Flour	2.3034	150.38	144.01	117.23	+	4.42	+	28.28
040 Other Cereal Flour	0.0604	128.14	130.31	123.82	-	1.67	+	3.49
041 Sugar Refined	1.7975	158.41	149.70	130.79	+	5.82	+	21.12
042 Chocolate	0.0139	89.03	88.95	81.57	+	0.09	+	9.15
043 Sugar Confectionary	0.0738	187.48	187.48	115.50	+	0.00	+	<u>62.32</u>
044 Coffee & Tea	0.7303	129.90	129.90	127.71	+	0.00	+	1.71
045 Spices	0.1449	341.64	341.64	155.60	+	0.00	+	<u>119.5</u>
046 Other Food Products	0.0336	119.30	119.30	112.35	+	0.00	+	6.19
047 Mineral Water	0.0207	125.24	125.24	123.64	+	0.00	+	1.29
048 Beverages	0.6303	129.87	129.77	125.81	+	0.08	+	3.23
049 Tobacco Products	1.2998	104.23	104.23	104.23	+	0.00	+	0.00
Textiles & Apparels	10.3289	171.11	171.86	142.60	-	0.44	+	19.99
050 Cotton Yarn	5.2491	203.51	205.21	164.84	-	0.83	+	23.46
051 Nylon Yarn	0.1719	95.24	95.24	95.24	+	0.00	+	0.00
052 Blended Yarn	0.1689	129.30	132.70	120.22	-	2.56	+	7.55
053 Woven Fabrics	0.0128	152.49	152.49	135.54	+	0.00	+	12.51
054 Cotton Fabrics	0.6343	162.88	162.78	118.41	+	0.06	+	37.56
055 Other Fabrics	1.1016	120.07	120.07	112.30	+	0.00	+	6.92
056 Silk & Reyon Fabrics	0.7350	155.57	153.24	117.76	+	1.52	+	32.11
057 Towels	0.1235	141.44	141.44	117.41	+	0.00	+	20.47

Annexure C: Wholesale Price Indices by Major Groups & Commodities (2015-16=100)

Item and Specification	Weight	Index Numbers			% Change in May 2021 over	
		May 21	Apr 21	May 20	Apr 2021	May 2020
058 Blankets	0.0029	104.95	104.95	96.44	+ 0.00	+ 8.82
059 Bed Sheets	0.0913	123.12	123.12	112.64	+ 0.00	+ 9.30
060 Quilts	0.0019	117.24	117.24	109.35	+ 0.00	+ 7.22
061 Woolen Carpets	0.0383	137.01	137.01	137.01	+ 0.00	+ 0.00
062 Synthetic Carpets	0.0566	116.51	116.51	115.72	+ 0.00	+ 0.68
063 Hosiery Products	0.8832	136.87	136.87	121.90	+ 0.00	+ 12.28
064 Readymade Garments	1.0576	139.13	139.13	131.52	+ 0.00	+ 5.79
Leather Products	0.7115	119.35	119.35	118.88	+ 0.00	+ 0.40
065 Leather Without Hair	0.2973	108.77	108.77	108.00	+ 0.00	+ 0.71
066 Other Leather N.E.C	0.2567	111.77	111.77	111.77	+ 0.00	+ 0.00
067 Footwear	0.1575	151.69	151.69	151.00	+ 0.00	+ 0.46
Other Transportable Goods	22.3979	162.47	163.00	117.64	- 0.33	+ 38.11
068 Timber	0.0165	153.60	153.60	111.96	+ 0.00	+ 37.19
069 Printing Paper	0.4279	130.70	130.70	130.70	+ 0.00	+ 0.00
070 Hard Board	0.1579	146.50	146.50	146.50	+ 0.00	+ 0.00
071 Motor Spirit	1.6268	149.37	150.68	113.64	- 0.87	+ 31.44
072 Diesel Oil	5.4849	153.45	155.41	100.68	- 1.26	+ <u>52.41</u>
073 Kerosene Oil	0.2151	156.89	158.91	93.04	- 1.27	+ <u>68.63</u>
074 Furnace Oil	3.2664	289.52	289.52	133.06	+ 0.00	+ <u>117.5</u>
075 Mobil Oil	0.7114	128.53	128.53	122.31	+ 0.00	+ 5.09
076 Chemicals	1.7720	145.66	144.45	129.62	+ 0.84	+ 12.37
077 Dyeing Material	0.1539	146.16	146.16	146.16	+ 0.00	+ 0.00
078 Fertilizers	2.8657	110.35	110.51	95.03	- 0.14	+ 16.12
079 Pesticides	0.2763	142.51	142.51	110.91	+ 0.00	+ 28.49
080 Insecticides	0.1276	111.49	111.49	111.49	+ 0.00	+ 0.00
081 Paints & Varnishes	0.1916	136.88	136.88	124.38	+ 0.00	+ 10.05
082 Medicines	1.1428	149.96	149.63	145.57	+ 0.22	+ 3.02
083 Soaps & Detergents	0.8168	116.69	116.39	111.66	+ 0.26	+ 4.50
084 Auto Tires	0.2703	126.22	126.14	121.56	+ 0.06	+ 3.83
085 Plastic Products	0.4550	119.12	119.12	108.16	+ 0.00	+ 10.13
086 Glass sheets	0.2089	147.64	147.64	145.21	+ 0.00	+ 1.67
087 Other Glass Articles	0.1635	150.08	150.08	132.52	+ 0.00	+ 13.25
088 Ceramics & Sanitary Fixture	0.0244	126.79	126.79	123.86	+ 0.00	+ 2.37
089 Bricks, Blocks & Tiles	0.1566	134.53	134.13	120.62	+ 0.30	+ 11.53
090 Cement	1.8145	127.53	127.96	115.31	- 0.34	+ 10.60
091 Bed Foam	0.0006	156.92	155.30	145.73	+ 1.04	+ 7.68
092 Matches	0.0505	1173.30	1173.30	1170.11	+ 0.00	+ 0.27
Metal Product, Machinery & Eq	8.7156	158.28	157.76	135.94	+ 0.33	+ 16.43
093 Steel Bar & Sheets	1.4615	183.62	180.52	165.05	+ 1.72	+ 11.25
094 Pipe Fittings	0.0780	169.43	169.43	141.32	+ 0.00	+ 19.89
095 Steel Products	0.3879	134.30	134.30	133.35	+ 0.00	+ 0.71
096 Engines & Motors	0.0046	107.29	107.29	107.29	+ 0.00	+ 0.00
097 Vacuum Pumps	0.0155	107.56	107.56	107.56	+ 0.00	+ 0.00
098 Air Conditioners	0.0049	126.48	126.48	112.46	+ 0.00	+ 12.47
099 Cultivators	0.0551	103.75	103.75	103.75	+ 0.00	+ 0.00
100 Chuff Cutter	0.1293	121.43	121.43	107.14	+ 0.00	+ 13.34
101 Tractors	0.0028	129.36	129.36	121.30	+ 0.00	+ 6.64
102 Lathe Machines	0.0525	217.68	217.68	203.64	+ 0.00	+ 6.89
103 Concrete Mixture	0.0107	100.00	100.00	100.00	+ 0.00	+ 0.00
104 Fridge, WashM, SewM, Fans, Iron	1.1645	161.46	161.46	148.98	+ 0.00	+ 8.38
105 Electric Wires	0.0912	144.65	144.65	125.73	+ 0.00	+ 15.05
106 Lighting Equipment	1.4431	119.49	119.49	116.71	+ 0.00	+ 2.38
107 Radio & Television	0.1843	106.16	106.16	100.59	+ 0.00	+ 5.54
108 Motor Vehicles	0.0244	158.44	158.44	156.45	+ 0.00	+ 1.27
109 Motorcycles	0.2570	131.95	131.95	120.09	+ 0.00	+ 9.88
110 Bicycles	3.3483	172.55	172.55	131.36	+ 0.00	+ 31.36