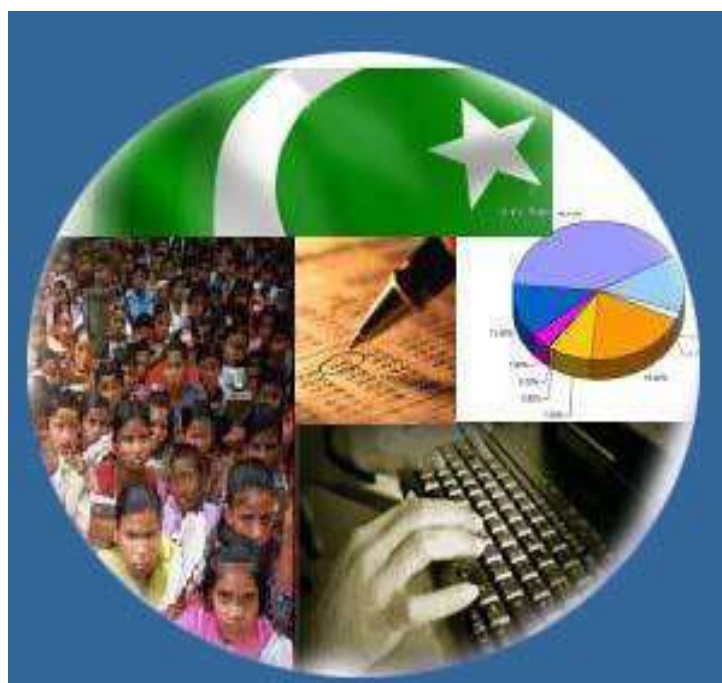




Monthly Review on Price Indices



March, 2021
(Base Year 2015-16)

Government of Pakistan
Ministry of Planning, Development & Special Initiatives
Pakistan Bureau of Statistics
Islamabad

Inflation in Brief

- CPI inflation General**, increased by 9.1% on year-on-year basis in March 2021 as compared to an increase of 8.7% in the previous month and 10.2% in March 2020. On month-on-month basis, it increased by 0.4% in March 2021 as compared to an increase of 1.8% in the previous month and an increase of 0.02% in March 2020.
- CPI inflation Urban**, increased by 8.7% on year-on-year basis in March 2021 as compared to an increase of 8.6% in the previous month and 9.3% in March 2020. On month-on-month basis, it increased by 0.3% in March 2021 as compared to an increase of 2.3% in the previous month and an increase of 0.1% in March 2020.
- CPI inflation Rural**, increased by 9.5% on year-on-year basis in March 2021 as compared to an increase of 8.8% in the previous month and 11.7% in March 2020. On month-on-month basis, it increased by 0.5% in March 2021 as compared to an increase of 1.1% in the previous month and a decrease of 0.1% in March 2020.
- SPI inflation** on YoY increased by 18.7% in March 2021 as compared to an increase of 11.9% a month earlier and an increase of 11.8% in March 2020. On MoM basis, it increased by 5.7% in March 2021 as compared to an increase of 3.1% a month earlier and a decrease of 0.3% in March 2020.
- WPI inflation** on YoY basis increased by 14.6% in March 2021 as compared to an increase of 9.5% a month earlier and an increase of 9.3% in March 2020. WPI inflation on MoM basis increased by 3.7% in March 2021 as compared to an increase of 2.2% a month earlier and a decrease of 0.9% in corresponding month i.e. March 2020.
- Figures 1 and 2 show graphically the yearly data of Table 1.a for Urban and Rural CPI while Table 1.1 shows "Period Average" and "YoY" percent changes in indices of three years.

Table 1.a General Inflation (%) (Base 2015-16)																		
PERIOD	CPI														SPI**		WPI	
	General						Food				Non-Food							
	National		Urban		Rural		Urban		Rural		Urban		Rural		YoY	MoM	YoY	MoM
	YoY	MoM	YoY	MoM	YoY	MoM	YoY	MoM	YoY	MoM	YoY	MoM	YoY	MoM				
June-19	8.0	0.5	8.1	0.3	7.9	0.7	7.5	-0.3	9.1	0.7	8.4	0.7	7.0	0.7	9.3	0.9	14.0	0.2
Jul-19	8.4	1.8	8.7	2.0	7.9	1.6	7.9	1.0	9.3	1.7	9.2	2.5	6.8	1.5	8.9	1.0	13.3	3.1
Aug-19	10.5	1.6	10.6	1.5	10.3	1.9	11.9	3.1	12.6	2.9	9.9	0.5	8.4	1.1	12.1	2.7	14.1	1.2
Sep-19	11.4	0.8	11.6	0.7	11.1	0.8	15.0	2.0	15.0	1.8	9.7	0.0	8.0	0.0	14.7	1.9	15.9	0.1
Oct-19	11.0	1.8	10.9	1.6	11.3	2.2	13.7	1.4	14.6	2.6	9.3	1.7	8.7	1.8	15.1	2.7	13.3	2.0
Nov-19	12.7	1.3	12.1	1.0	13.6	1.9	16.6	2.4	19.3	3.4	9.6	0.2	9.0	0.6	20.2	3.7	11.2	-0.8
Dec-19	12.6	-0.3	12.0	-0.4	13.6	-0.3	16.7	-1.7	19.7	-1.1	9.5	0.4	8.8	0.4	18.1	-2.0	12.4	-0.3
Jan-20	14.6	2.0	13.4	1.7	16.3	2.4	19.5	2.7	23.8	3.4	10.2	1.1	10.5	1.5	18.3	0.5	15.4	1.8
Feb-20	12.4	-1.0	11.2	-1.1	14.2	-1.0	15.2	-1.4	19.7	-1.6	9.1	-0.9	9.8	-0.4	14.5	-0.8	12.7	-0.7
Mar-20	10.2	0.0	9.3	0.1	11.7	-0.1	13.0	0.6	15.5	-0.3	7.3	-0.1	8.5	0.1	11.8	-0.3	9.3	-0.9
Apr-20	8.5	-0.8	7.7	-0.7	9.8	-1.1	10.4	-1.0	12.9	-1.7	6.2	-0.5	7.4	-0.5	9.3	-1.8	4.9	-2.0
May-20	8.2	0.3	7.3	0.3	9.7	0.3	10.6	1.5	13.7	1.4	5.4	-0.4	6.4	-0.5	11.0	2.2	1.5	-2.1
Jun-20	8.6	0.8	7.6	0.7	10.0	1.0	12.9	1.8	15.2	2.0	4.7	0.0	5.8	0.1	11.5	1.4	0.9	-0.3
July-20	9.3	2.5	7.8	2.2	11.6	3.0	15.1	3.0	17.8	4.0	3.9	1.7	6.5	2.2	13.7	3.0	3.2	5.4
Aug-20	8.2	0.6	7.1	0.8	9.9	0.4	11.3	-0.3	13.5	-0.9	4.8	1.5	6.8	1.5	11.7	0.9	3.3	1.3
Sep-20	9.0	1.5	7.7	1.3	11.1	2.0	12.4	3.0	15.8	3.8	5.0	0.2	7.2	0.3	12.0	2.1	4.3	1.0
Oct-20	8.9	1.7	7.3	1.3	11.3	2.4	13.9	2.8	17.7	4.3	3.6	0.3	5.8	0.5	12.3	3.0	5.1	2.9
Nov-20	8.3	0.8	7.0	0.6	10.5	1.1	13.0	1.6	16.1	2.0	3.4	0.1	5.5	0.2	9.9	1.1	5.0	-0.9
Dec-20	8.0	-0.7	7.0	-0.3	9.5	-1.2	12.6	-2.1	13.4	-3.4	3.8	0.7	6.1	1.0	9.1	-2.7	5.7	0.3
Jan-21	5.7	-0.2	5.0	-0.2	6.6	-0.3	7.3	-2.1	7.2	-2.2	3.7	1.1	6.1	1.5	7.7	-0.8	6.4	2.5
Feb-21	8.7	1.8	8.6	2.3	8.8	1.1	10.3	1.3	9.1	0.2	7.6	2.8	8.6	2.0	11.9	3.1	9.5	2.2
Mar-21	9.1	0.4	8.7	0.3	9.5	0.5	11.5	1.7	11.1	1.5	7.1	-0.6	8.1	-0.4	18.7	5.7	14.6	3.7

** SPI for quintile 1. Digits 0.0* are due to rounding off.

Core inflation (NFNE)

7. Measured by **non-food non-energy Urban** increased by 6.3% on (YoY) basis in March, 2021 as compared to an increase of 6.4% in the previous month and 7.4% in March, 2020. On (MoM) basis, it increased by 0.2% in March, 2021 as compared to increase of 1.1% in previous month, and an increase of 0.3% in corresponding month of last year i.e. March, 2020.
8. Measured by **non-food non-energy Rural** increased by 7.3% on (YoY) basis in March, 2021 as compared to an increase of 7.7% in the previous month and 9.4% in March, 2020. On (MoM) basis, it increased by 0.3% in March, 2021 as compared to an increase of 0.5% in previous month, and an increase of 0.6% in corresponding month of last year i.e. March, 2020.

Core inflation (Trimmed)

9. Measured by 20% **weighted trimmed mean Urban** increased by 8.1% on (YoY) basis in March, 2021 as compared to 7.9% in the previous month and 8.7% in March, 2020. On (MoM) basis, it increased by 0.4% in March, 2021 as compared to an increase of 1.0% in the previous month and an increase of 0.3% in corresponding month of last year i.e. March, 2020.
10. Measured by 20% **weighted trimmed mean Rural** increased by 9.4% on (YoY) basis in March, 2021 as compared to 9.2% in the previous month and by 11.4% in March, 2020. On (MoM) basis, it increased by 0.3% in March, 2021 as compared to an increase of 0.5% in the previous month and an increase of 0.1% in corresponding month of last year i.e. March, 2020.

Table 1.b Core Inflation (%) (Base 2015-16)

Period	NFNE				Trimmed			
	Urban		Rural		Urban		Rural	
	YoY	MoM	YoY	MoM	YoY	MoM	YoY	MoM
Mar-20	7.4	0.3	9.4	0.6	8.7	0.3	11.4	0.1
Apr-20	6.4	0.2	8.5	0.3	6.7	-0.2	9.3	-0.6
May-20	6.3	0.4	8.4	0.4	6.7	0.4	8.9	0.5
Jun-20	6.5	0.4	8.8	0.7	7.4	0.4	9.9	0.9
Jul-20	5.3	0.6	7.8	1.1	6.7	0.9	9.8	1.5
Aug-20	5.6	0.7	7.6	0.8	7.0	1.3	9.3	1.0
Sep-20	5.5	0.3	7.8	0.4	7.1	0.4	10.0	0.9
Oct-20	5.6	0.6	7.6	0.6	6.5	0.6	9.5	1.1
Nov-20	5.6	0.3	7.4	0.3	6.3	0.2	9.1	0.4
Dec-20	5.6	0.4	7.7	0.5	6.2	0.4	8.8	0.6
Jan-21	5.4	0.9	7.8	1.1	5.7	1.0	8.1	1.2
Feb-21	6.4	1.1	7.7	0.5	7.9	1.0	9.2	0.5
Mar-21	6.3	0.2	7.3	0.3	8.1	0.4	9.4	0.3

Table 1.1 Period Average and Y-o-Y % Change

INDEX	Average July- March % changes			March over March % changes		
	2020-2021	2019-2020	2018-2019	2020-2021	2019-2020	2018-2019
CPI (National)	8.34	11.53	6.31	9.05	10.24	8.64
CPI(Urban)	7.36	11.08	6.67	8.75	9.31	8.93
CPI(Rural)	9.83	12.23	5.74	9.51	11.67	8.20
SPI	11.91	14.85	3.58	18.70	11.78	10.46
WPI	6.35	13.00	16.03	14.59	9.26	16.56

Figure 1: Urban Inflation - YoY, Special Indices

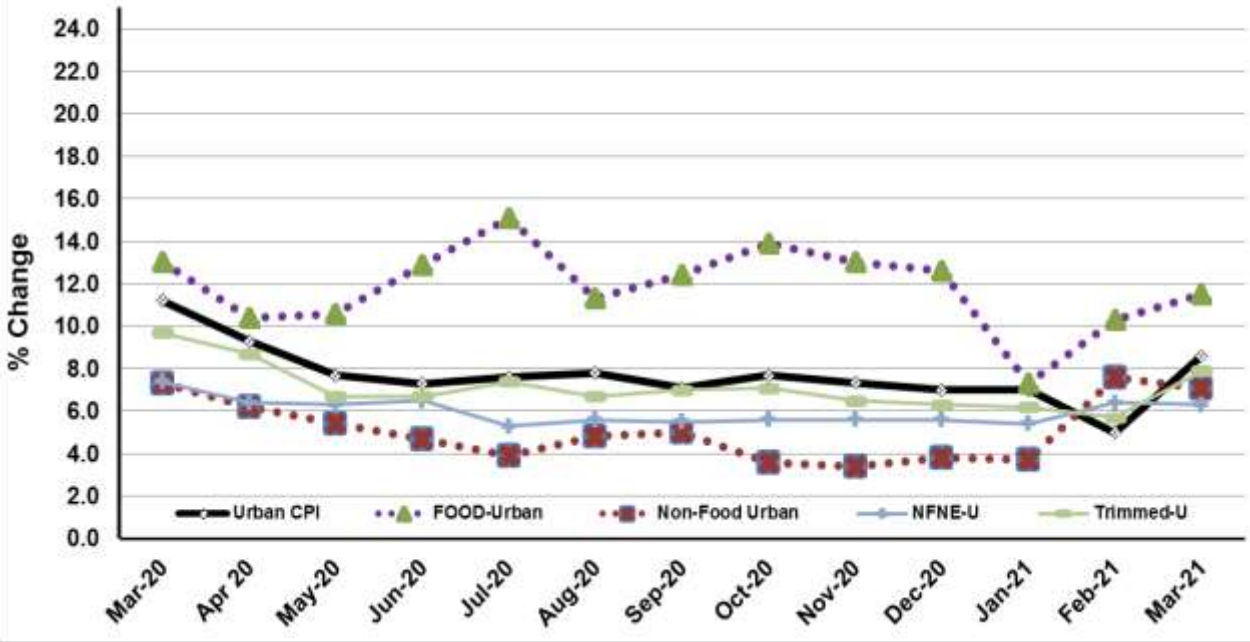
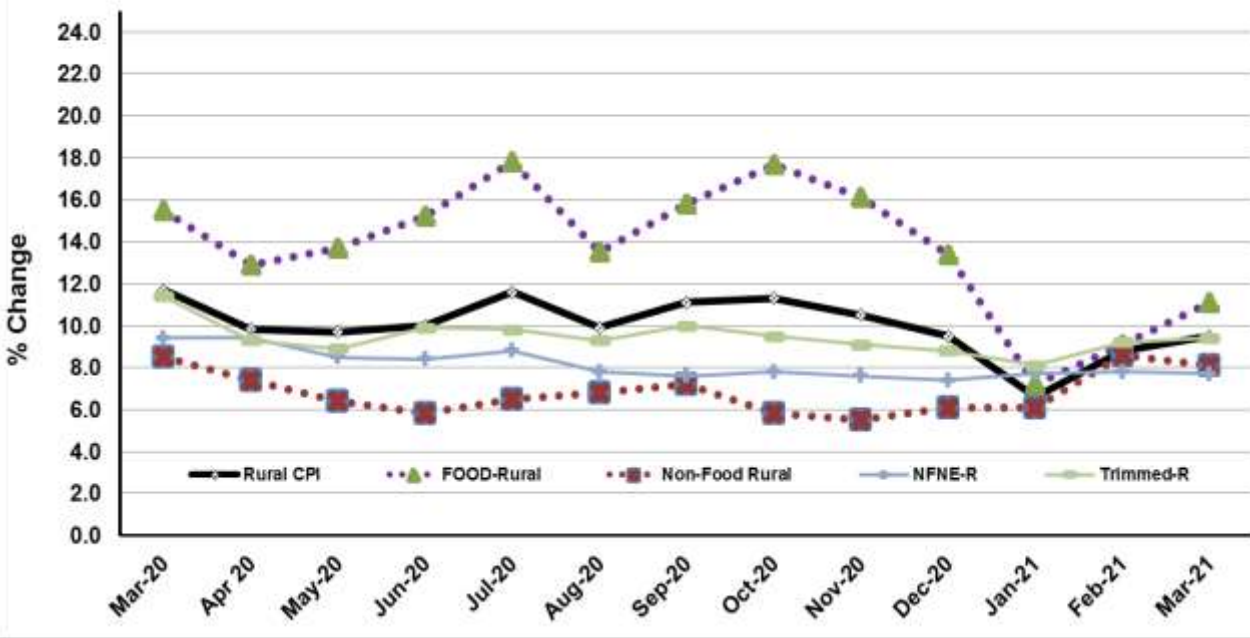


Figure 2: Rural Inflation - YoY, Special Indices



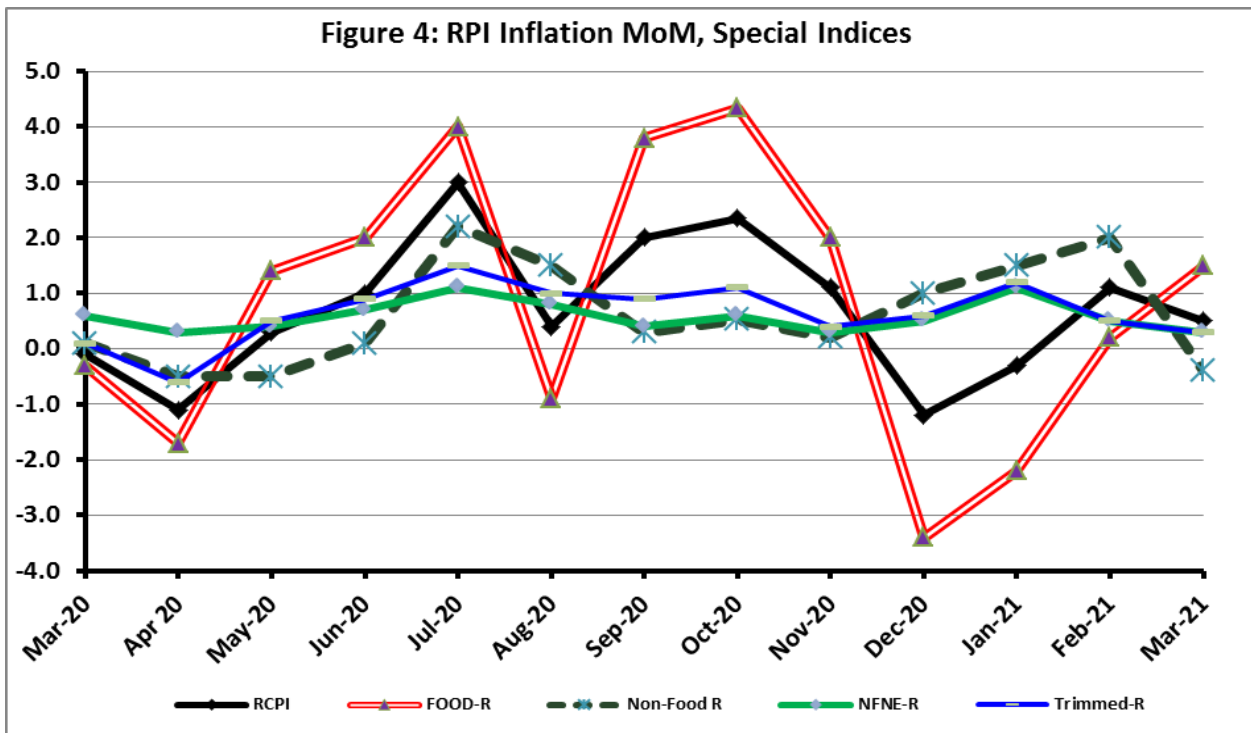
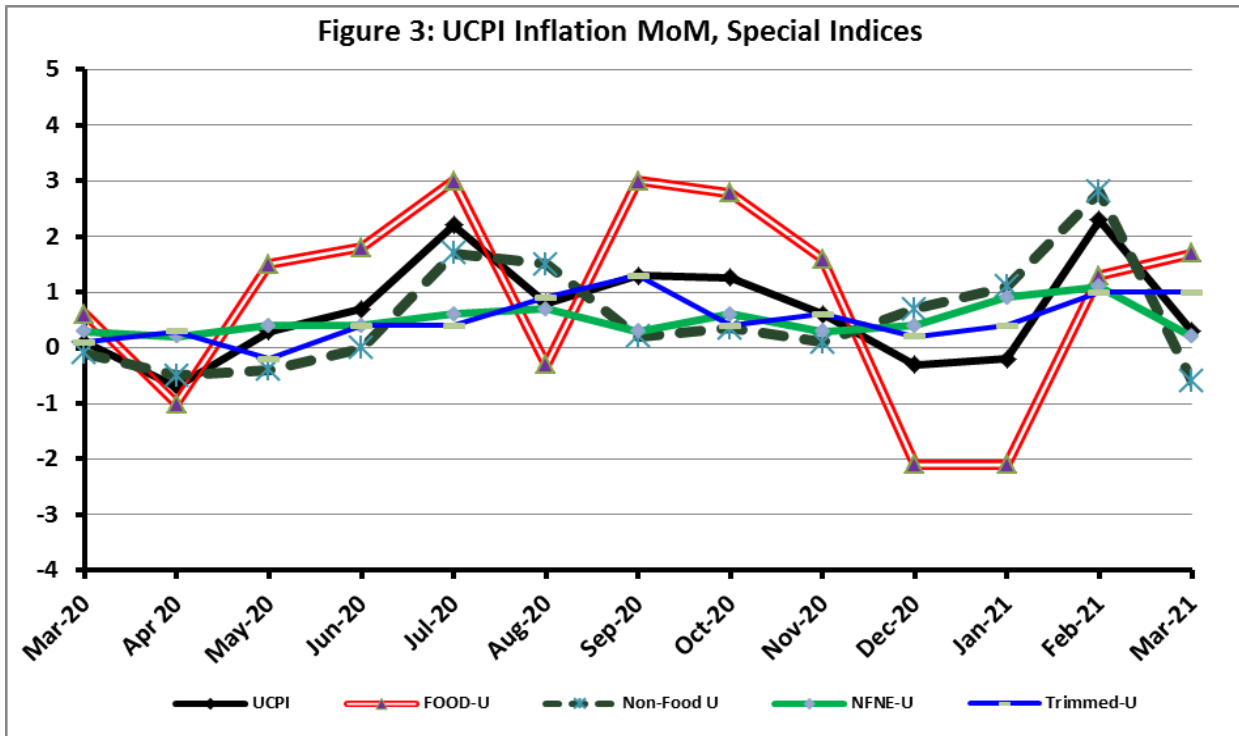


Figure 5: CPI Y.o.Y (National, Urban, Rural)

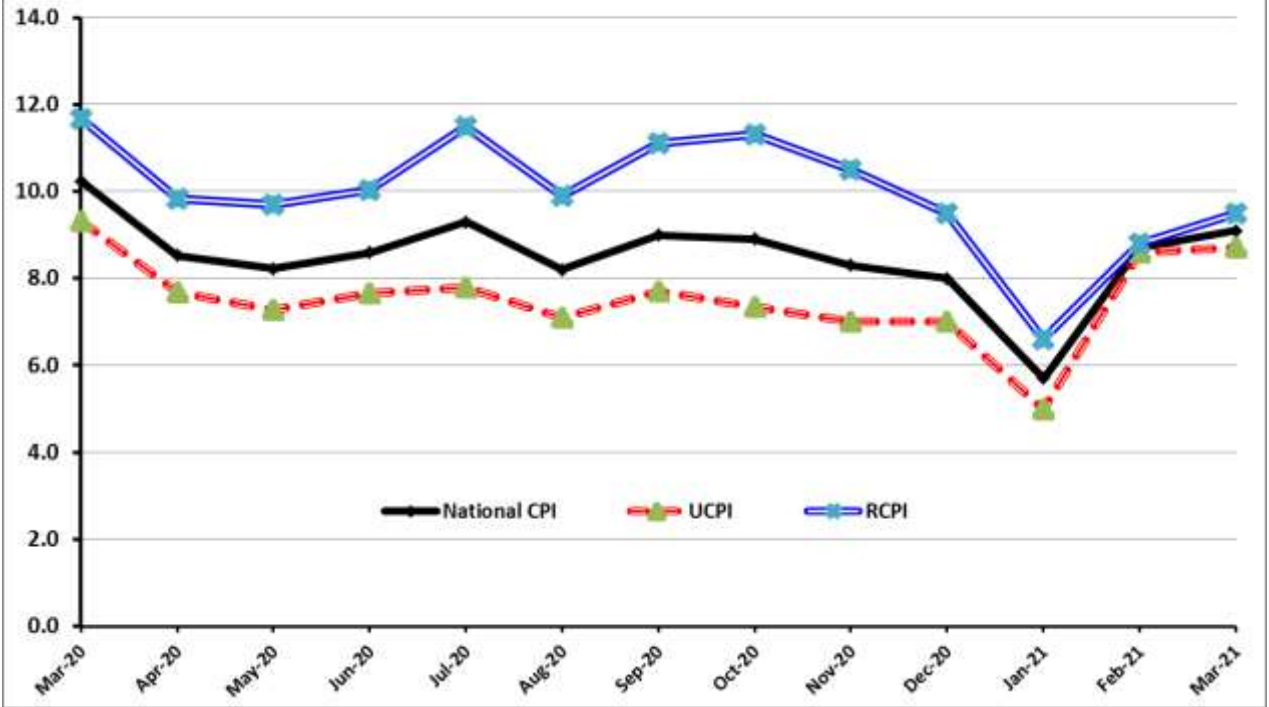
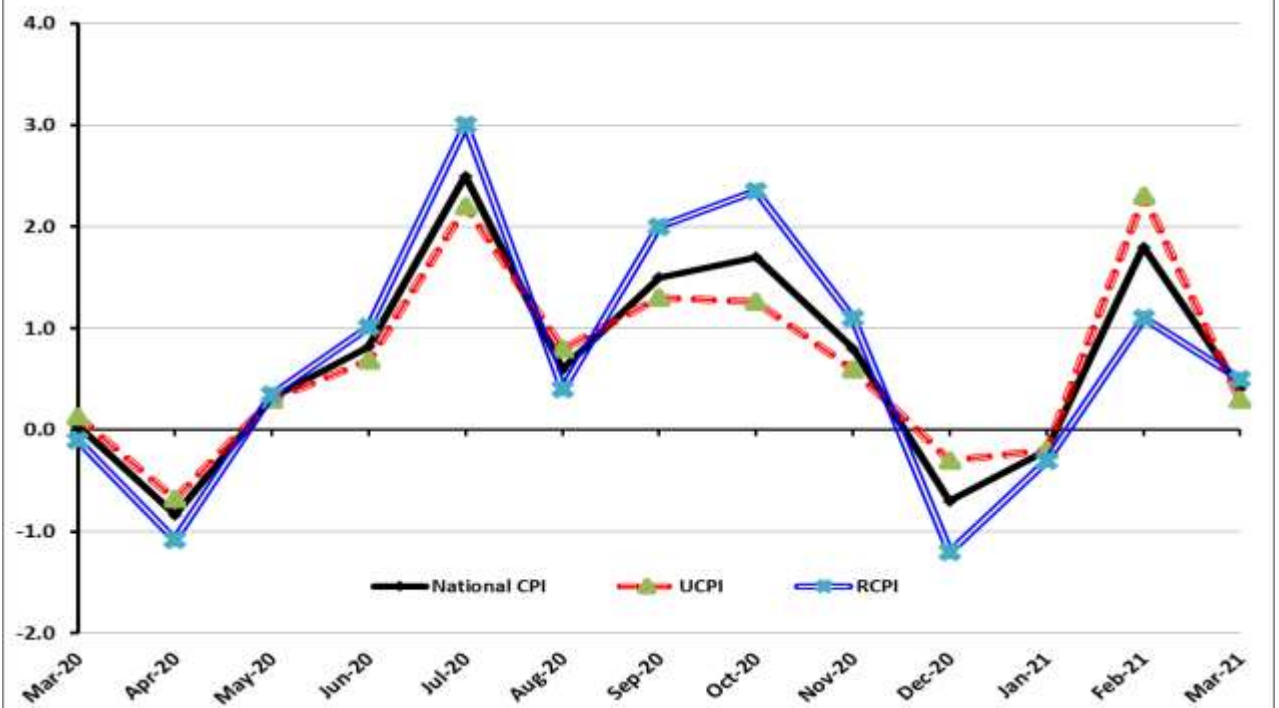


Figure 6: CPI M.o.M (National, Urban, Rural)



I. National Consumer Price Index (N-CPI)

The **National Consumer Price Index** for **March 2021** is increased by **0.36%** over **February 2021** and increased by **9.05%** over corresponding month of the last year i.e. **March 2020**.

Table 1: Consumer Price Index (National) by Group of Commodities and Services (Base 2015-16)									
No	Group	Group Weight (%)	Indices			% Change Mar 2021 Over		Impact (In % points) Mar 2021 Over	
			Mar 2021	Feb 2021	Mar 2020	Feb 2021	Mar 2020	Feb 2021	Mar 2020
	General	100.00	143.61	143.09	131.69	0.36	9.05	0.36	9.05
1.	Food & Non-alcoholic Bev.	34.58	147.49	144.96	132.18	1.75	11.58	0.61	4.02
	<i>Non-perishable Food Items</i>	29.60	152.12	149.81	129.99	1.55	17.03	0.48	4.97
	<i>Perishable Food Items</i>	4.99	120.02	116.20	145.20	3.29	-17.34	0.13	-0.95
2.	Alcoholic Bev. & Tobacco	1.02	144.48	144.01	136.40	0.33	5.92	0.00	0.06
3.	Clothing & Footwear	8.60	146.94	145.49	132.72	1.00	10.72	0.09	0.93
4.	Housing, Water, Electricity, Gas & Fuels	23.63	140.48	142.85	129.17	-1.65	8.76	-0.39	2.03
5.	Furnishing & Household Equipment Maintenance	4.10	139.20	137.79	127.88	1.02	8.85	0.04	0.35
6.	Health	2.79	151.85	150.81	139.55	0.69	8.81	0.02	0.26
7.	Transport	5.91	143.25	144.19	139.18	-0.65	2.92	-0.04	0.18
8.	Communication	2.21	107.57	107.56	106.96	0.01	0.57	0.00	0.01
9.	Recreation & Culture	1.59	125.06	124.73	119.54	0.27	4.62	0.00	0.07
10.	Education	3.79	143.83	143.83	142.40	0.00	1.01	0.00	0.04
11.	Restaurants & Hotels	6.92	141.25	140.23	130.63	0.73	8.13	0.05	0.56
12.	Miscellaneous	4.87	150.17	150.88	135.75	-0.47	10.62	-0.02	0.53

II. Urban Consumer Price Index (UCPI)

The Urban Consumer Price Index of March 2021 is increased by **0.27%** over February 2021 and increased by **8.75%** over corresponding month of the last year i.e. March 2020.

Table 2: Consumer Price Index (Urban) by Group of Commodities and Services (Base 2015-16)

No	Group	Group Weight (%)	Indices			% Change Mar 2021 Over		Impact (In % points) Mar 2021 Over	
			Mar 2021	Feb 2021	Mar 2020	Feb 2021	Mar 2020	Feb 2021	Mar 2020
	General	100.00	142.99	142.61	131.49	0.27	8.75	0.27	8.75
1.	Food & Non-alcoholic Bev.	30.42	146.51	143.95	130.93	1.78	11.90	0.55	3.60
	Non-perishable Food Items	25.97	150.79	148.53	128.70	1.52	17.16	0.41	4.36
	Perishable Food Items	4.46	121.56	117.22	143.95	3.70	-15.55	0.14	-0.76
2.	Alcoholic Bev. & Tobacco	0.85	153.44	152.48	143.54	0.63	6.90	0.01	0.06
3.	Clothing & Footwear	8.01	144.65	143.58	129.69	0.75	11.54	0.06	0.91
4.	Housing, Water, Electricity, Gas & Fuels	27.03	141.07	143.34	130.40	-1.58	8.18	-0.43	2.19
5.	Furnishing & Household Equip. & Maintenance	4.09	138.33	137.06	128.21	0.93	7.89	0.04	0.32
6.	Health	2.31	151.94	150.26	139.56	1.12	8.87	0.03	0.22
7.	Transport	6.14	144.34	145.36	139.85	-0.70	3.21	-0.04	0.21
8.	Communication	2.35	108.95	108.95	108.22	0.00	0.67	0.00	0.01
9.	Recreation & Culture	1.73	121.89	121.56	118.01	0.27	3.29	0.00	0.05
10.	Education	4.88	146.26	146.26	144.98	0.00	0.88	0.00	0.05
11.	Restaurants & Hotels	7.41	140.53	139.00	129.70	1.10	8.35	0.08	0.61
12.	Miscellaneous	4.77	149.64	150.08	135.66	-0.29	10.31	-0.01	0.51

Main contributors to month-on-month and year-on-year percentage changes are given below and detail is given in **Annexure-A**.

1. **MONTH-ON-MONTH** Top few commodities which varied from previous month are given below: -

FOOD

Increased: Eggs (12.96%), Fruits (10.00%), Potatoes (9.54%), Chicken (6.58%), Sugar (4.82%), Tomatoes (4.67%), Pulse mash (4.57%), Pulse gram (4.39%), Rice (1.61%) and Wheat flour (1.46%).

Decreased: Onions (2.37%), Dry fruits (2.19%), Fish (1.78%) and Vegetables (1.48%).

NON-FOOD

Increased: Cotton cloth (1.77%), Vehicle accessories (1.56%), Drugs & medicines (1.40%), Washing soap/detergents/match box (1.33%) and Plastic products (1.04%).

Decreased: Electricity charges (8.05%), Liquefied Hydrocarbons (6.84%), Transport services (3.00%) and Personal Effects (2.78%).

2. **YEAR-ON-YEAR:** Top few commodities which varied from previous year i.e. March, 2020 are given below: -

FOOD

Increased: Eggs (64.62%), Chicken (40.73%), Wheat (35.17%), Condiments & Spices (28.65%), Sugar (23.47%), Mustard oil (22.94%), Pulse mash (19.53%), Wheat flour (18.94%), Vegetable ghee (17.46%), Beans (16.20%) and Cooking oil (15.25%).

Decreased: Onions (49.20%), Vegetables (17.29%), Potatoes (5.80%) and Tomatoes (3.79%).

NON-FOOD

Increased: Electricity charges (31.54%), Footwear (16.21%), Cotton cloth (15.82%), Cleaning & laundering (13.20%), Clinic fee (12.70%) and Woollen readymade garments (12.08%).

Decreased: Liquefied Hydrocarbons (11.01%)

III. Rural Consumer Price Index (RCPI)

The Rural Consumer Price Index of March 2021 is increased by 0.51% over February 2021 and increased by 9.51% over corresponding month of the last year i.e. March 2020.

Table 3: Consumer Price Index (Rural) by Group of Commodities and Services (Base 2015-16)

No	Group	Group Weight (%)	Indices			% Change Mar 2021 Over		Impact (In % points) Mar 2021 Over	
			Mar 2021	Feb 2021	Mar 2020	Feb 2021	Mar 2020	Feb 2021	Mar 2020
	General	100.00	144.55	143.82	132.00	0.51	9.51	0.51	9.51
1.	Food & Non-alcoholic Bev.	40.87	148.60	146.10	133.59	1.71	11.24	0.71	4.65
	Non-perishable Food Items	35.08	153.61	151.23	131.43	1.57	16.88	0.58	5.89
	Perishable Food Items	5.79	118.23	115.02	146.65	2.79	-19.38	0.13	-1.25
2.	Alcoholic Bev. & Tobacco	1.28	135.45	135.46	129.21	-0.01	4.83	0.00	0.06
3.	Clothing & Footwear	9.48	149.87	147.93	136.59	1.31	9.72	0.13	0.95
4.	Housing, Water, Electricity, Gas & Fuels	18.49	139.19	141.76	126.44	-1.81	10.08	-0.33	1.79
5.	Furnishing & Household Equip. & Maintenance	4.10	140.50	138.88	127.38	1.17	10.30	0.05	0.41
6.	Health	3.51	151.76	151.36	139.54	0.26	8.76	0.01	0.33
7.	Transport	5.56	141.43	142.24	138.06	-0.57	2.44	-0.03	0.14
8.	Communication	1.99	105.11	105.08	104.72	0.03	0.37	0.00	0.01
9.	Recreation & Culture	1.38	131.08	130.73	122.45	0.27	7.05	0.00	0.09
10.	Education	2.13	135.46	135.46	133.48	0.00	1.48	0.00	0.03
11.	Restaurants & Hotels	6.19	142.56	142.46	132.31	0.07	7.75	0.00	0.48
12.	Miscellaneous	5.02	150.92	152.02	135.89	-0.72	11.06	-0.04	0.57

Main contributors to Month-on-Month and Year-on-Year percentage changes are given below and detail is given in **Annexure-B**.

1. MONTH-ON-MONTH Top few commodities which varied from previous month are given below: -

FOOD

Increased: Eggs (15.00%), Chicken (12.21%), Potatoes (11.43%), Fruits (6.08%), Sugar (5.77%), Besan (4.71%), Pulse Gram (3.89%), Gram Whole (2.53%), Pulse Mash (2.52%), Pulse Masoor (2.18%), Vegetable ghee (1.58%), Cooking oil (1.53%) and Wheat Flour(0.97%).

Decreased: Tomatoes (6.10%), Fish (1.14%), Condiments & Spices (0.61%) and Wheat (0.33%).

NON-FOOD

Increased: Woolen Cloth (3.59%), Cotton Cloth (2.03%), Plastic Products (1.45%) and Washing Soaps, Detergents & Match Box (1.41%).

Decreased: Electricity Charges (8.05%), Personal Effects (3.53%), Liquefied Hydrocarbons (2.40%) and Construction Input Items (0.54%).

2. YEAR-ON-YEAR: Top few commodities which varied from previous year i.e. March 2020 are given below: -

FOOD

Increased: Eggs (61.29%), Chicken (50.10%), Wheat (32.53%), Condiments & Spices (23.33%), Sugar (22.66%), Mustard oil (21.73%), Wheat Flour (20.75%), Cooking oil (20.49%), Vegetable ghee (18.78%), Pulse Masoor (15.94%), Pulse Mash (15.03%) and Rice (14.18%).

Decreased: Onions (50.49%), Vegetables (22.02%), Potatoes (6.25%), Tomatoes (3.00%) and Fruits (2.83%).

NON-FOOD

Increased: Electricity Charges (31.54%), Clinic Fee (16.02%), Hosiery (15.64%), Plastic Products (14.24%), Woolen Cloth (13.15%), Cotton Cloth (11.84%) and Woolen Readymade Garments (10.01%).

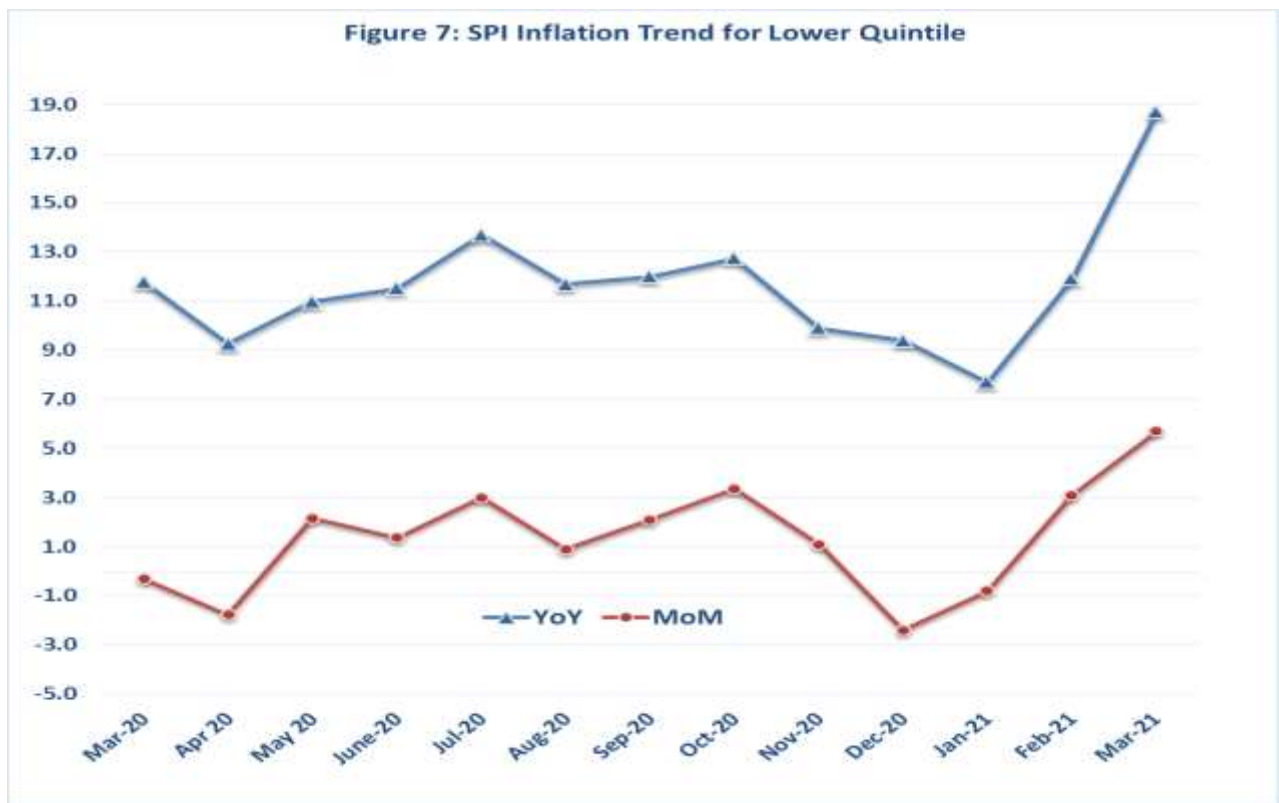
Decreased: Liquefied Hydrocarbons (8.84%).

IV. Sensitive Price Indicator

Quintile-wise percentage changes YoY and MoM are given below in Table 4. The series from March 2020 to March 2021 is also graphed below in Figure 7.

Table 4: Sensitive Price Indicator (Base 2015-16)					
Quintiles	Indices			% Change March 2021 Over	
	March 2021	February 2021	March 2020	February 2021	March 2020
1	158.18	149.65	133.26	5.70	18.70
2	148.37	144.23	128.14	2.87	15.79
3	149.15	145.58	130.54	2.45	14.26
4	145.49	142.21	127.80	2.31	13.84
5	147.39	144.22	130.80	2.20	12.68
Combined	147.39	143.57	128.98	2.66	14.27

Table 4.1 : Weekly Percentage Change of SPI During March - 2021				
Quintiles	% Change with Previous week			
	04-03-2021	11-03-2021	18-03-2021	25-03-2021
Quintile 1	0.54	-0.95	-0.05	0.52
Combined	0.61	-0.57	-0.19	0.61



V. Wholesale Price Index

The Wholesale Price Index for March, 2021 increased by **3.72%** over February 2021. It increased by **14.59%** over the corresponding month of the last year. YoY and MoM movements, from March, 2020 to March, 2021 are also graphed below in Figure 8.

Table 5: Wholesale Price Index by Group of Commodities (Base 2015-16)

No	Group	Group Weight (%)	Indices			% Change Mar 2021 Over		Impact (In % points) Mar 2021 Over	
			Mar 2021	Feb 2021	Mar 2020	Feb 2021	Mar 2020	Feb 2021	Mar 2020
	General	100.00	162.73	156.90	142.01	3.72	14.59	3.72	14.59
1	Agriculture Forestry & Fishery	25.77	164.20	157.51	140.18	4.25	17.14	1.10	4.36
2	Ores/Minerals, Elec., Gas & Water	12.01	171.15	173.73	162.56	-1.49	5.28	-0.20	0.73
3	Food, Beverages, Tobacco, Textiles, Leather	31.11	159.33	149.26	133.66	6.75	19.21	2.00	5.62
	i. Food Products, Beverages & Tobacco	20.07	151.60	150.34	129.62	0.84	16.96	0.16	3.11
	ii. Textiles & Apparels	10.33	177.01	149.20	142.59	18.64	24.14	1.83	2.50
	iii. Leather Products	0.71	120.94	119.35	117.90	1.33	2.58	0.01	0.02
4	Other Transportable Goods	22.40	163.34	158.02	147.44	3.37	10.78	0.76	2.51
5	Metal Product, Machinery & Equipment	8.72	157.32	156.36	134.90	0.61	16.62	0.05	1.38

Main contributors to month-on-month and year-on-year percentage changes are given below and detail is given in Annexure C.

1. MONTH-ON-MONTH Top few commodities which varied from previous month are given below: -

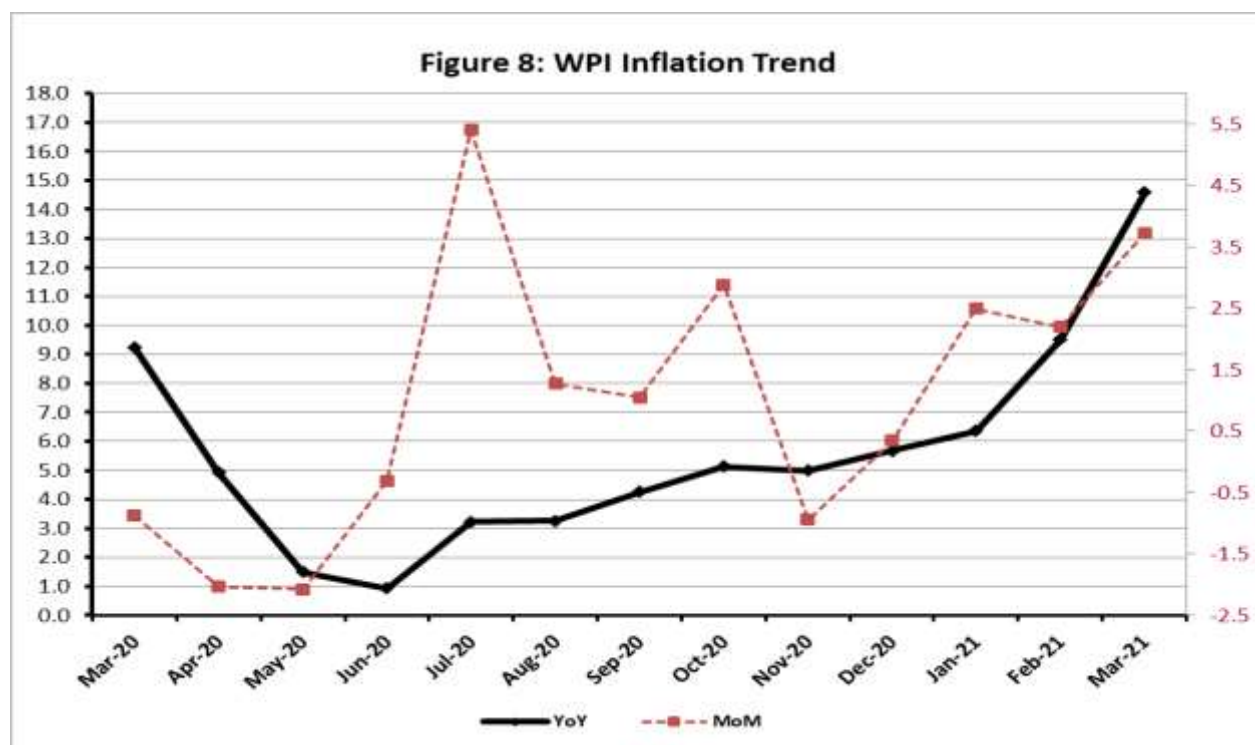
Increased: Cotton Yarn (32.71%), Fibre Crops (11.07%), Furnace Oil (9.52%), Eggs (9.35%), Fertilizers (6.39%), Pulses (4.96%) and Sugar Refined (4.48%).

Decreased: Dried Fruits & Nuts (3.92%), Cotton Seeds (1.85%) and Stimulant & Spice Crops (1.03%).

2. YEAR-ON-YEAR Top few commodities which varied from previous year i.e. March, 2020 are given below: -

Increased: Spices (139.36%), Eggs (62.47%), Poultry (39.37%), Timber (36.5%), Wheat (34.93%), Fibre Crops (33.46%), Furnace Oil (32.88%), Cotton Yarn (32.71%), Vegetable Oils Refined (25.83%), Wheat Flour (23.06%), Vegetable Ghee (22.69%), Sugar Refined (21.70%) and Rice (17.98%).

Decreased: Potatoes (24.54%), Vegetables (23.27%), Stimulant & Spice Crops (10.15%) and Kerosene Oil (3.61%).



Annexure A:CPI (Urban) Index Numbers by Commodity Groups & Commodities (2015-16=100)

Item and Specification	Weight	Index Numbers			% Change in Mar 2021 over			
		Mar 21	Feb 21	Mar 20	Feb 2021	Mar 2020		
General	100.0000	142.99	142.61	131.49	+	0.27	+	8.75
Food and non-alcoholic Bevera	30.4215	146.51	143.95	130.93	+	1.78	+	11.90
01 Wheat	0.6120	169.23	169.26	125.20	-	0.02	+	35.17
02 Wheat flour	3.0075	139.04	137.04	116.90	+	1.46	+	18.94
03 Wheat products	0.0936	160.24	159.51	125.56	+	0.46	+	27.62
04 Besan	0.0830	126.25	124.15	123.78	+	1.69	+	2.00
05 Rice	1.1804	142.43	140.17	131.98	+	1.61	+	7.92
06 Bakery and confectionary	0.4770	143.03	142.89	126.07	+	0.10	+	13.45
07 Nimco	0.1224	141.67	140.68	124.31	+	0.70	+	13.97
08 Meat	2.0411	157.53	156.32	143.33	+	0.77	+	9.91
09 Chicken	1.3631	172.82	162.15	122.80	+	6.58	+	40.73
10 Fish	0.3855	115.39	117.48	115.10	-	1.78	+	0.25
11 Milk fresh	7.1070	139.22	138.15	121.66	+	0.77	+	14.43
12 Milk products	0.6407	142.41	140.60	124.15	+	1.29	+	14.71
13 Milk powder	0.3106	136.73	135.37	129.49	+	1.00	+	5.59
14 Eggs	0.5083	192.54	170.45	116.96	+	12.96	+	64.62
15 Butter	0.0932	191.73	191.73	165.21	+	0.00	+	16.05
16 Mustard oil	0.0120	154.47	151.61	125.65	+	1.89	+	22.94
17 Cooking oil	1.1016	169.44	169.33	147.02	+	0.06	+	15.25
18 Vegetable ghee	1.0324	178.71	177.75	152.14	+	0.54	+	17.46
19 Dry fruits	0.3299	141.80	144.97	132.27	-	2.19	+	7.20
20 Fresh fruits	1.4363	130.45	118.59	130.81	+	10.00	-	0.28
21 Pulse masoor	0.1624	107.83	107.27	93.87	+	0.52	+	14.87
22 Pulse moong	0.1697	150.28	148.35	143.99	+	1.30	+	4.37
23 Pulse mash	0.1152	113.12	108.18	94.64	+	4.57	+	19.53
24 Pulse gram	0.1660	126.88	121.54	122.41	+	4.39	+	3.65
25 Gram whohe	0.0912	128.08	126.44	128.08	+	1.30	+	0.00
26 Beans	0.0408	159.53	159.22	137.29	+	0.19	+	16.20
27 Potatoes	0.4496	163.78	149.52	173.87	+	9.54	-	5.80
28 Onions	0.5928	86.94	89.05	171.14	-	2.37	-	49.20
29 Tomatoes	0.3459	73.56	70.28	76.46	+	4.67	-	3.79
30 Fresh vegetables	1.5306	119.20	120.99	144.11	-	1.48	-	17.29
31 Sugar	1.1130	158.29	151.01	128.20	+	4.82	+	23.47
32 Gur	0.0379	144.83	146.10	138.91	-	0.87	+	4.26
33 Honey	0.1017	131.08	131.01	118.78	+	0.05	+	10.36
34 Sweetmeat	0.3535	149.91	149.71	138.69	+	0.13	+	8.09
35 Ice cream	0.1044	137.47	136.57	126.01	+	0.66	+	9.09
36 Condiments and Spices	1.3340	207.97	208.66	161.65	-	0.33	+	28.65
37 Dessert preparation	0.0419	131.54	130.81	120.70	+	0.56	+	8.98
38 Tea	0.8427	140.83	140.83	140.74	+	0.00	+	0.06
39 Beverages	0.8906	130.41	128.11	123.31	+	1.80	+	5.76
Alcoholic Beverages, Tobacco	0.8540	153.44	152.48	143.54	+	0.63	+	6.90
40 Cigarettes	0.7167	141.06	141.06	134.73	+	0.00	+	4.70
41 Pan prepared	0.1373	218.11	212.12	189.54	+	2.82	+	15.07
Clothing and footwear	8.0096	144.65	143.58	129.69	+	0.75	+	11.54
42 Cotton cloth	2.2227	149.21	146.62	128.83	+	1.77	+	15.82
43 Woolen cloth	0.8361	140.20	138.84	125.98	+	0.98	+	11.29
44 Readymade garments	1.3196	137.77	137.48	129.95	+	0.21	+	6.02
45 Woolen readymade garments	0.4307	142.21	141.11	126.88	+	0.78	+	12.08
46 Tailoring	1.0741	143.43	142.93	136.89	+	0.35	+	4.78
47 Hosiery	0.4070	141.45	140.98	127.52	+	0.33	+	10.92
48 Dopatta	0.1713	128.26	127.73	123.85	+	0.41	+	3.56
49 Cleaning and laundering	0.0665	147.72	147.53	130.50	+	0.13	+	13.20
50 Footwear	1.4816	150.68	150.67	129.66	+	0.01	+	16.21
Housing, water, Elec., Gas an	27.0332	141.07	143.34	130.40	-	1.58	+	8.18
51 House rent	19.2558	135.86	135.86	129.68	+	0.00	+	4.77
52 Construction input items	0.3765	150.90	149.66	142.80	+	0.83	+	5.67
53 Construction wage rates	0.2025	154.60	154.26	148.10	+	0.22	+	4.39
54 Water supply	0.5269	158.19	157.86	131.89	+	0.21	+	19.94
55 Garbage collection	0.1064	173.70	173.35	154.80	+	0.20	+	12.21
56 Electricity charges	4.5562	142.12	154.56	108.04	-	8.05	+	31.54
57 Gas charges	1.0807	216.94	216.94	216.94	+	0.00	+	0.00

Annexure A:CPI (Urban) Index Numbers by Commodity Groups & Commodities (2015-16=100)

Item and Specification	Weight	Index Numbers			% Change in Mar 2021 over			
		Mar 21	Feb 21	Mar 20	Feb 2021	Mar 2020		
58 Liquefied Hydrocarbons	0.5064	146.44	157.19	164.55	-	6.84	-	11.01
59 Solid Fuel	0.4218	121.39	121.73	114.27	-	0.28	+	6.23
<i>Furnishing and household equi</i>	4.0937	138.33	137.06	128.21	+	0.93	+	7.89
60 Furniture and furnishing	0.4750	140.45	139.84	128.32	+	0.44	+	9.45
61 Carpets	0.0308	113.21	112.80	111.09	+	0.36	+	1.91
62 Household textiles	0.3420	134.74	134.43	125.71	+	0.23	+	7.18
63 Household equipment's	1.0032	138.46	136.47	127.53	+	1.46	+	8.57
64 Plastic products	0.0536	121.98	120.73	116.63	+	1.04	+	4.59
65 Major tools & equipment's	0.0084	137.94	137.05	120.32	+	0.65	+	14.64
66 Washing soap/detergents/match	1.4112	141.57	139.71	128.60	+	1.33	+	10.09
67 Household servant	0.7695	134.66	134.55	130.99	+	0.08	+	2.80
<i>Health</i>	2.3098	151.94	150.26	139.56	+	1.12	+	8.87
68 Drugs and medicines	1.0735	151.74	149.64	138.81	+	1.40	+	9.31
69 Therapeutic Appliances and Eq	0.0054	116.53	116.20	107.20	+	0.28	+	8.70
70 Doctor (MBBS) clinic fee	0.4044	190.20	189.71	168.77	+	0.26	+	12.70
71 Dental services	0.0156	128.10	126.85	118.61	+	0.99	+	8.00
72 Medical tests	0.2367	133.32	132.69	124.34	+	0.47	+	7.22
73 Hospitals services	0.5742	134.03	131.81	127.53	+	1.68	+	5.10
<i>Transport</i>	6.1368	144.34	145.36	139.85	-	0.70	+	3.21
74 Motor vehicles	0.8097	153.87	153.75	146.48	+	0.08	+	5.05
75 Motor vehicle accessories	0.1941	140.01	137.86	127.83	+	1.56	+	9.53
76 Motor fuel	2.9088	153.47	153.46	151.98	+	0.01	+	0.98
77 Mechanical services	0.4290	136.87	136.53	129.15	+	0.25	+	5.98
78 Motor vehicle tax	0.0482	126.72	126.72	126.72	+	0.00	+	0.00
79 Transport services	1.7470	127.54	131.49	120.92	-	3.00	+	5.47
<i>Communication</i>	2.3536	108.95	108.95	108.22	+	0.00	+	0.67
80 Postal services	0.0190	161.25	161.25	147.05	+	0.00	+	9.66
81 Communication apparatus	0.4524	119.49	119.48	118.74	+	0.01	+	0.63
82 Communication Services	1.8822	105.89	105.89	105.30	+	0.00	+	0.56
<i>Recreation and culture</i>	1.7301	121.89	121.56	118.01	+	0.27	+	3.29
83 Recreation and culture	0.6478	113.44	112.73	110.25	+	0.63	+	2.89
84 Text books	0.6655	120.80	120.80	117.25	+	0.00	+	3.03
85 Newspapers	0.0716	151.55	151.55	151.55	+	0.00	+	0.00
86 stationery	0.3452	133.68	133.38	127.11	+	0.22	+	5.17
<i>Education</i>	4.8807	146.26	146.26	144.98	+	0.00	+	0.88
87 Education	4.8807	146.26	146.26	144.98	+	0.00	+	0.88
<i>Restaurants and hotels</i>	7.4050	140.53	139.00	129.70	+	1.10	+	8.35
88 Readymade food	5.5235	142.01	140.08	128.93	+	1.38	+	10.15
89 Marriage Hall Charges	1.7514	137.88	137.52	133.41	+	0.26	+	3.35
90 Accommodation Services	0.1301	113.20	113.20	112.40	+	0.00	+	0.71
<i>Misc. goods and services</i>	4.7720	149.64	150.08	135.66	-	0.29	+	10.31
91 Personal Grooming Services	0.8001	137.64	136.73	125.75	+	0.67	+	9.46
92 Electrical Appliances for Per	0.0465	118.43	118.43	116.78	+	0.00	+	1.41
93 Appliances/Articles/Products	2.9807	140.61	139.84	127.37	+	0.55	+	10.39
94 Personal Effects.	0.9447	189.82	195.25	171.17	-	2.78	+	10.90

Annexure B:CPI (Rural) Index Numbers by Commodity Groups & Commodities (2015-16=100)

Item and Specification	Weight	Index Numbers			% Change in Mar 2021 over			
		Mar 21	Feb 21	Mar 20	Feb 2021	Mar 2020		
General	100.0000	144.55	143.82	132.00	+	0.51	+	9.51
Food and non-alcoholic Bevera	40.8668	148.60	146.10	133.59	+	1.71	+	11.24
01 Wheat	3.4736	173.64	174.22	131.02	-	0.33	+	32.53
02 Wheat Flour	3.4297	145.18	143.79	120.23	+	0.97	+	20.75
03 Wheat Products	0.1068	148.91	148.30	124.79	+	0.41	+	19.33
04 Besan	0.0728	130.17	124.31	129.89	+	4.71	+	0.22
05 Rice	1.5501	184.95	183.85	161.98	+	0.60	+	14.18
06 Bakery and Confectionary	0.3702	142.26	142.01	125.74	+	0.18	+	13.14
07 Nimco	0.0774	130.38	129.01	118.03	+	1.06	+	10.46
08 Meat	1.7146	158.03	157.46	143.87	+	0.36	+	9.84
09 Chicken	1.4641	185.37	165.20	123.50	+	12.21	+	50.10
10 Fish	0.2640	125.39	126.83	125.74	-	1.14	-	0.28
11 Milk fresh	10.3803	132.55	132.29	122.98	+	0.20	+	7.78
12 Milk products	0.9624	131.43	130.85	124.46	+	0.44	+	5.60
13 Milk powder	0.1062	128.02	127.72	123.27	+	0.23	+	3.85
14 Eggs	0.5665	184.92	160.80	114.65	+	15.00	+	61.29
15 Butter	0.3333	145.69	144.60	127.54	+	0.75	+	14.23
16 Mustard oil	0.0136	158.31	155.13	130.05	+	2.05	+	21.73
17 Cooking oil	0.6011	184.15	181.37	152.84	+	1.53	+	20.49
18 Vegetable ghee	2.3764	190.81	187.85	160.64	+	1.58	+	18.78
19 Dry fruits	0.2496	156.20	156.03	138.75	+	0.11	+	12.58
20 Fresh fruits	1.4505	125.25	118.07	128.90	+	6.08	-	2.83
21 Pulse Masoor	0.2076	115.79	113.32	99.87	+	2.18	+	15.94
22 Pulse Moong	0.2510	158.46	157.37	154.37	+	0.69	+	2.65
23 Pulse Mash	0.1465	111.21	108.48	96.68	+	2.52	+	15.03
24 Pulse Gram	0.2751	127.01	122.25	122.38	+	3.89	+	3.78
25 Gram Whole	0.1116	123.49	120.44	124.37	+	2.53	-	0.71
26 Beans	0.0896	167.83	166.83	150.71	+	0.60	+	11.36
27 Potatoes	0.7437	167.75	150.54	178.94	+	11.43	-	6.25
28 Onions	0.8965	82.81	82.79	167.27	+	0.02	-	50.49
29 Tomatoes	0.5069	69.14	73.63	71.28	-	6.10	-	3.00
30 Fresh Vegetables	2.0947	118.70	118.65	152.22	+	0.04	-	22.02
31 Sugar	2.0296	158.39	149.75	129.13	+	5.77	+	22.66
32 Gur	0.1522	140.92	140.72	131.24	+	0.14	+	7.38
33 Honey	0.0296	135.28	131.13	122.60	+	3.16	+	10.34
34 Sweetmeat	0.3967	135.12	134.88	126.10	+	0.18	+	7.15
35 Ice Cream	0.0568	135.87	134.19	125.95	+	1.25	+	7.88
36 Condiments and Spices	1.4919	189.35	190.51	153.53	-	0.61	+	23.33
37 Dessert Preparation	0.0133	129.67	128.27	115.77	+	1.09	+	12.01
38 Tea	1.2566	138.10	138.10	137.87	+	0.00	+	0.17
39 Beverages	0.5537	131.10	130.18	123.45	+	0.71	+	6.20
Alcoholic Beverages, Tobacco	1.2786	135.45	135.46	129.21	-	0.01	+	4.83
40 Cigarettes	1.2364	134.13	134.17	128.25	-	0.03	+	4.58
41 Pan Prepared	0.0422	174.00	173.46	157.44	+	0.31	+	10.52
Clothing and footwear	9.4826	149.87	147.93	136.59	+	1.31	+	9.72
42 Cotton Cloth	2.8381	165.05	161.77	147.58	+	2.03	+	11.84
43 Woolen Cloth	1.0959	142.14	137.22	125.62	+	3.59	+	13.15
44 Readymade Garments	1.1345	139.22	137.99	133.09	+	0.89	+	4.61
45 Woolen Readymade Garments	0.5401	143.31	143.31	130.27	+	0.00	+	10.01
46 Tailoring	1.2999	146.82	146.60	133.68	+	0.15	+	9.83
47 Hosiery	0.4322	180.00	178.54	155.66	+	0.82	+	15.64
48 Dopatta	0.2078	138.48	137.85	130.72	+	0.46	+	5.94
49 Cleaning and Laundering	0.0176	141.72	141.54	128.85	+	0.13	+	9.99
50 Footwear	1.9165	136.53	135.92	128.84	+	0.45	+	5.97
Housing, water, Elec., Gas an	18.4853	139.19	141.76	126.44	-	1.81	+	10.08
51 House Rent	8.6110	136.97	136.97	129.42	+	0.00	+	5.83
52 Construction Input Items	0.6306	129.47	130.17	119.66	-	0.54	+	8.20
53 Construction Wage Rates	0.2526	155.79	154.97	147.17	+	0.53	+	5.86
54 Water Supply	0.0645	214.98	214.98	158.09	+	0.00	+	35.99
55 Garbage Collection	0.0080	142.31	142.31	132.21	+	0.00	+	7.64
56 Electricity Charges	3.4431	142.12	154.56	108.04	-	8.05	+	31.54
57 Liquefied Hydrocarbons	0.9994	135.17	138.50	148.28	-	2.40	-	8.84

Annexure B:CPI (Rural) Index Numbers by Commodity Groups & Commodities (2015-16=100)

Item and Specification	Weight	Index Numbers			% Change in Mar 2021 over		
		Mar 21	Feb 21	Mar 20	Feb 2021	Mar 2020	
58 Solid Fuel	4.4761	141.43	141.67	129.30	-	0.17	+ 9.38
<i>Furnishing and household equi</i>	4.1031	140.50	138.88	127.38	+	1.17	+ 10.30
59 Furniture and Furnishing	0.5786	141.78	141.74	129.43	+	0.03	+ 9.54
60 Household Textiles	0.4382	133.67	133.43	126.39	+	0.18	+ 5.76
61 Household Equipment's	1.2774	147.21	144.77	132.64	+	1.69	+ 10.98
62 Plastic Products	0.0776	155.81	153.59	136.39	+	1.45	+ 14.24
63 Major Tools and Equipment's	0.0324	124.08	123.95	115.54	+	0.10	+ 7.39
64 Washing Soaps, Detergents and	1.6989	136.40	134.50	122.78	+	1.41	+ 11.09
<i>Health</i>	3.5141	151.76	151.36	139.54	+	0.26	+ 8.76
65 Drugs and Medicines	1.5792	153.28	152.71	140.99	+	0.37	+ 8.72
66 Doctor Clinic Fee	0.5128	185.37	185.37	159.78	+	0.00	+ 16.02
67 Dental Services	0.0181	132.61	132.61	122.97	+	0.00	+ 7.84
68 Medical Tests	0.3967	153.97	153.74	142.04	+	0.15	+ 8.40
69 Hospitals Services	1.0073	131.75	131.31	126.28	+	0.34	+ 4.33
<i>Transport</i>	5.5580	141.43	142.24	138.06	-	0.57	+ 2.44
70 Motor Vehicles	0.7305	132.29	132.26	127.10	+	0.02	+ 4.08
71 Motor Vehicles Accessories	0.1572	139.49	139.25	135.22	+	0.17	+ 3.16
72 Motor Fuels	2.4932	152.12	152.07	150.04	+	0.03	+ 1.39
73 Mechanical Services	0.3645	155.26	155.26	152.53	+	0.00	+ 1.79
74 Motor Vehicle Tax	0.0174	127.98	127.98	127.98	+	0.00	+ 0.00
75 Transport Services	1.7952	127.78	130.41	123.29	-	2.02	+ 3.64
<i>Communication</i>	1.9940	105.11	105.08	104.72	+	0.03	+ 0.37
76 Postal Services	0.0070	149.43	149.43	149.43	+	0.00	+ 0.00
77 Communication Apparatus	0.3362	120.50	120.28	118.95	+	0.18	+ 1.30
78 Communication Services	1.6508	101.79	101.79	101.63	+	0.00	+ 0.16
<i>Recreation and culture</i>	1.3764	131.05	130.73	122.45	+	0.24	+ 7.02
79 Recreation and Culture	0.4763	133.47	133.32	127.52	+	0.11	+ 4.67
80 Text Books	0.5047	117.28	117.28	110.23	+	0.00	+ 6.40
81 Newspapers	0.0230	165.56	165.56	161.68	+	0.00	+ 2.40
82 Stationery	0.3724	144.51	143.51	130.12	+	0.70	+ 11.06
<i>Education</i>	2.1342	135.46	135.46	133.48	+	0.00	+ 1.48
83 Education	2.1342	135.46	135.46	133.48	+	0.00	+ 1.48
<i>Restaurants and hotels</i>	6.1895	142.56	142.46	132.31	+	0.07	+ 7.75
84 Readymade Food	3.8001	152.83	152.66	136.61	+	0.11	+ 11.87
85 Marriage Hall Charges	2.2525	127.73	127.73	126.93	+	0.00	+ 0.63
86 Accommodation Services	0.1369	101.62	101.62	101.59	+	0.00	+ 0.03
<i>Misc. goods and services</i>	5.0174	150.92	152.02	135.89	-	0.72	+ 11.06
87 Personal Grooming Services	1.5363	155.21	154.47	137.45	+	0.48	+ 12.92
88 Appliances/Articles/Products	2.2746	131.79	131.21	119.89	+	0.44	+ 9.93
89 Personal Effects	1.2065	181.51	188.15	164.08	-	3.53	+ 10.62

Annexure C: Wholesale Price Indices by Major Groups & Commodities

(2015-16=100)

Item and Specification	Weight	Index Numbers			% Change in Mar 2021 over			
		Mar 21	Feb 21	Mar 20	Feb 2021	Mar 2020		
General	100.0000	162.73	156.90	142.01	+	3.72	+	14.59
Agriculture Forestry & Fisher	25.7674	164.20	157.51	140.18	+	4.25	+	17.14
001 Wheat	0.6297	169.40	169.04	125.55	+	0.21	+	34.93
002 Maize	0.6764	177.16	170.89	147.89	+	3.67	+	19.79
003 Rice	2.4413	170.94	170.61	144.89	+	0.19	+	17.98
004 Sorghum / Jowar	0.0214	215.25	203.26	171.84	+	5.90	+	25.26
005 Millet / Bajra	0.0374	163.77	162.32	120.56	+	0.89	+	35.84
006 Vegetables	1.2441	121.41	121.23	158.24	+	0.15	-	23.27
007 Fresh Fruits	1.5144	144.64	139.65	142.80	+	3.57	+	1.29
008 Dry Fruits	0.2478	137.67	137.91	127.06	-	0.17	+	8.35
009 Cotton Seeds	1.1511	140.12	142.76	134.14	-	1.85	+	4.46
010 Other Oil Seeds	0.0722	157.43	156.48	133.88	+	0.61	+	17.59
011 Edible Roots / Potatoes	0.2540	176.71	170.82	234.19	+	3.45	-	24.54
012 Stimulant & Spice Crops	0.1634	256.76	259.44	285.76	-	1.03	-	10.15
013 Pulses	0.4901	134.29	127.95	119.57	+	4.96	+	12.31
014 Sugar Crops	1.0725	139.03	139.03	114.58	+	0.00	+	21.34
015 Fibre Crops	5.3169	229.80	206.90	172.18	+	11.07	+	33.46
016 Unmanufactured Tobacco	0.0742	233.67	233.50	182.01	+	0.07	+	28.38
017 Poultry	0.5633	161.06	160.66	115.56	+	0.25	+	39.37
018 Raw Milk from Bovine Animals	7.0279	138.78	134.87	117.93	+	2.90	+	17.68
019 Eggs	0.5034	191.31	174.95	117.75	+	9.35	+	<u>62.47</u>
020 Raw Animal Materials / Wool	0.0351	105.62	105.62	105.33	+	0.00	+	0.28
021 Hides, Skins & Fur Skins, Raw	0.4834	34.48	33.86	38.67	+	1.83	-	10.84
022 Fuel Wood in Logs	0.0179	129.65	129.65	115.76	+	0.00	+	12.00
023 Fish Live Fresh or Chilled	1.7295	158.20	158.26	155.00	-	0.04	+	2.06
Ores/Minerals, Elec., Gas & W	12.0069	171.15	173.73	162.56	-	1.49	+	5.28
024 Coal not Agglomerated	0.7508	75.79	75.79	82.17	+	0.00	-	7.76
025 Natural Gas Liquefied	5.7065	203.20	203.59	197.99	-	0.19	+	2.63
026 Salt & Pure Sodium Chloride	0.0584	168.93	168.93	154.99	+	0.00	+	8.99
027 Electrical Energy	5.4912	150.91	156.14	136.82	-	3.35	+	10.30
Food, Beverages, Tobacco, Textil	31.1122	159.33	149.26	133.66	+	6.75	+	19.21
Food Products, Beverages &	20.0718	151.60	150.34	129.62	+	0.84	+	16.96
028 Meat of Animals	3.4559	161.96	161.26	140.52	+	0.43	+	15.26
029 Vegetables & Fruit Juice	0.0058	117.39	116.93	112.76	+	0.39	+	4.11
030 Dried Fruits & Nuts	0.1733	177.25	184.48	159.07	-	3.92	+	11.43
031 Fruit Juices	0.3880	131.32	128.72	118.10	+	2.02	+	11.19
032 Vegetable Oils Refined	1.9242	154.93	152.74	123.13	+	1.43	+	25.83
033 Vegetable Ghee	1.5632	181.51	179.73	147.94	+	0.99	+	22.69
034 Oil Cakes	0.9611	166.27	165.02	140.29	+	0.76	+	18.52
035 Processed Liquid Milk	4.4437	143.47	143.36	128.78	+	0.08	+	11.41
036 Milk & Cream in Solid Form	0.0316	133.90	133.71	124.18	+	0.14	+	7.83
037 Ice Cream	0.0047	137.64	137.64	117.05	+	0.00	+	17.59
038 Dairy Products N.E.C	0.0117	140.73	140.21	130.42	+	0.37	+	7.91
039 Wheat Flour	2.3034	148.26	148.39	120.48	-	0.09	+	23.06
040 Other Cereal Flour	0.0604	132.83	127.98	120.85	+	3.79	+	9.91
041 Sugar Refined	1.7975	156.99	150.26	129.00	+	4.48	+	21.70
042 Chocolate	0.0139	88.95	88.95	81.57	+	0.00	+	9.05
043 Sugar Confectionary	0.0738	187.19	187.19	115.50	+	0.00	+	<u>62.07</u>
044 Coffee & Tea	0.7303	129.85	129.86	127.71	-	0.01	+	1.68
045 Spices	0.1449	341.59	330.18	142.71	+	3.46	+	<u>139.3</u>
046 Other Food Products	0.0336	117.57	117.57	112.32	+	0.00	+	4.67
047 Mineral Water	0.0207	125.24	125.24	122.47	+	0.00	+	2.26
048 Beverages	0.6303	129.97	129.22	125.01	+	0.58	+	3.97
049 Tobacco Products	1.2998	104.23	104.23	104.23	+	0.00	+	0.00
Textiles & Apparels	10.3289	177.01	149.20	142.59	+	18.64	+	24.14
050 Cotton Yarn	5.2491	218.76	164.84	164.84	+	32.71	+	32.71
051 Nylon Yarn	0.1719	95.24	95.24	95.24	+	0.00	+	0.00
052 Blended Yarn	0.1689	133.08	120.22	120.22	+	10.70	+	10.70
053 Woven Fabrics	0.0128	152.49	152.49	135.54	+	0.00	+	12.51
054 Cotton Fabrics	0.6343	156.01	155.52	118.29	+	0.32	+	31.89
055 Other Fabrics	1.1016	116.18	115.47	112.30	+	0.61	+	3.46
056 Silk & Reyon Fabrics	0.7350	150.60	149.55	117.76	+	0.70	+	27.89
057 Towels	0.1235	132.31	132.31	117.41	+	0.00	+	12.69
058 Blankets	0.0029	104.95	104.95	96.44	+	0.00	+	8.82

Annexure C: Wholesale Price Indices by Major Groups & Commodities

(2015-16=100)

Item and Specification	Weight	Index Numbers			% Change in Mar 2021 over	
		Mar 21	Feb 21	Mar 20	Feb 2021	Mar 2020
059 Bed Sheets	0.0913	123.12	123.12	112.64	+ 0.00	+ 9.30
060 Quilts	0.0019	117.24	117.24	109.35	+ 0.00	+ 7.22
061 Woolen Carpets	0.0383	137.01	137.01	137.01	+ 0.00	+ 0.00
062 Synthetic Carpets	0.0566	116.51	116.17	115.72	+ 0.29	+ 0.68
063 Hosiery Products	0.8832	130.98	130.78	121.90	+ 0.15	+ 7.45
064 Readymade Garments	1.0576	138.04	138.04	131.52	+ 0.00	+ 4.96
Leather Products	0.7115	120.94	119.35	117.90	+ 1.33	+ 2.58
065 Leather Without Hair	0.2973	112.56	108.77	105.65	+ 3.48	+ 6.54
066 Other Leather N.E.C	0.2567	111.77	111.77	111.77	+ 0.00	+ 0.00
067 Footwear	0.1575	151.69	151.69	151.00	+ 0.00	+ 0.46
Other Transportable Goods	22.3979	163.34	158.02	147.44	+ 3.37	+ 10.78
068 Timber	0.0165	152.83	152.83	111.96	+ 0.00	+ 36.50
069 Printing Paper	0.4279	130.70	130.70	130.70	+ 0.00	+ 0.00
070 Hard Board	0.1579	146.50	146.50	146.50	+ 0.00	+ 0.00
071 Motor Spirit	1.6268	154.24	154.24	151.96	+ 0.00	+ 1.50
072 Diesel Oil	5.4849	159.72	158.48	158.01	+ 0.78	+ 1.08
073 Kerosene Oil	0.2151	160.62	157.27	166.64	+ 2.13	- 3.61
074 Furnace Oil	3.2664	287.05	262.09	216.02	+ 9.52	+ 32.88
075 Mobil Oil	0.7114	122.54	122.10	122.31	+ 0.36	+ 0.19
076 Chemicals	1.7720	143.93	140.54	129.60	+ 2.41	+ 11.06
077 Dyeing Material	0.1539	146.16	146.16	146.16	+ 0.00	+ 0.00
078 Fertilizers	2.8657	110.54	103.90	97.35	+ 6.39	+ 13.55
079 Pesticides	0.2763	141.99	141.99	110.91	+ 0.00	+ 28.02
080 Insecticides	0.1276	111.49	111.49	111.49	+ 0.00	+ 0.00
081 Paints & Varnishes	0.1916	136.88	136.05	124.38	+ 0.61	+ 10.05
082 Medicines	1.1428	149.23	146.79	145.37	+ 1.66	+ 2.66
083 Soaps & Detergents	0.8168	116.15	114.86	111.63	+ 1.12	+ 4.05
084 Auto Tyres	0.2703	126.14	125.48	121.54	+ 0.53	+ 3.78
085 Plastic Products	0.4550	117.99	117.99	108.16	+ 0.00	+ 9.09
086 Glass sheets	0.2089	147.41	147.41	145.21	+ 0.00	+ 1.52
087 Other Glass Articles	0.1635	149.95	149.95	132.52	+ 0.00	+ 13.15
088 Ceramics & Sanitary Fixture	0.0244	126.79	124.45	123.86	+ 1.88	+ 2.37
089 Bricks, Blocks & Tiles	0.1566	133.86	132.53	119.43	+ 1.00	+ 12.08
090 Cement	1.8145	123.79	123.64	114.13	+ 0.12	+ 8.46
091 Bed Foam	0.0006	155.30	149.96	145.73	+ 3.56	+ 6.57
092 Matches	0.0505	1173.3	1173.3	1170.1	+ 0.00	+ 0.27
Metal Product, Machinery & Eq	8.7156	157.32	156.36	134.90	+ 0.61	+ 16.62
093 Steel Bar & Sheets	1.4615	180.46	176.04	157.23	+ 2.51	+ 14.77
094 Pipe Fittings	0.0780	169.43	169.43	141.32	+ 0.00	+ 19.89
095 Steel Products	0.3879	134.30	134.28	133.35	+ 0.01	+ 0.71
096 Engines & Motors	0.0046	107.29	107.29	107.29	+ 0.00	+ 0.00
097 Vacuum Pumps	0.0155	107.56	107.56	107.56	+ 0.00	+ 0.00
098 Air Conditioners	0.0049	123.30	123.30	112.46	+ 0.00	+ 9.64
099 Cultivators	0.0551	103.75	103.75	103.75	+ 0.00	+ 0.00
100 Chuff Cutter	0.1293	121.43	110.00	107.14	+ 10.39	+ 13.34
101 Tractors	0.0028	129.36	129.36	109.22	+ 0.00	+ 18.44
102 Lathe Machines	0.0525	217.68	217.68	203.64	+ 0.00	+ 6.89
103 Concrete Mixture	0.0107	100.00	100.00	100.00	+ 0.00	+ 0.00
104 Fridge, WashM, SewM, Fans, Iron	1.1645	158.30	158.01	151.07	+ 0.18	+ 4.79
105 Electric Wires	0.0912	144.65	144.65	125.73	+ 0.00	+ 15.05
106 Lighting Equipment's	1.4431	119.49	119.49	116.71	+ 0.00	+ 2.38
107 Radio & Television	0.1843	106.16	105.87	100.59	+ 0.27	+ 5.54
108 Motor Vehicles	0.0244	158.44	158.44	156.02	+ 0.00	+ 1.55
109 Motorcycles	0.2570	131.90	131.90	120.09	+ 0.00	+ 9.83
110 Bicycles	3.3483	172.55	172.55	131.36	+ 0.00	+ 31.36