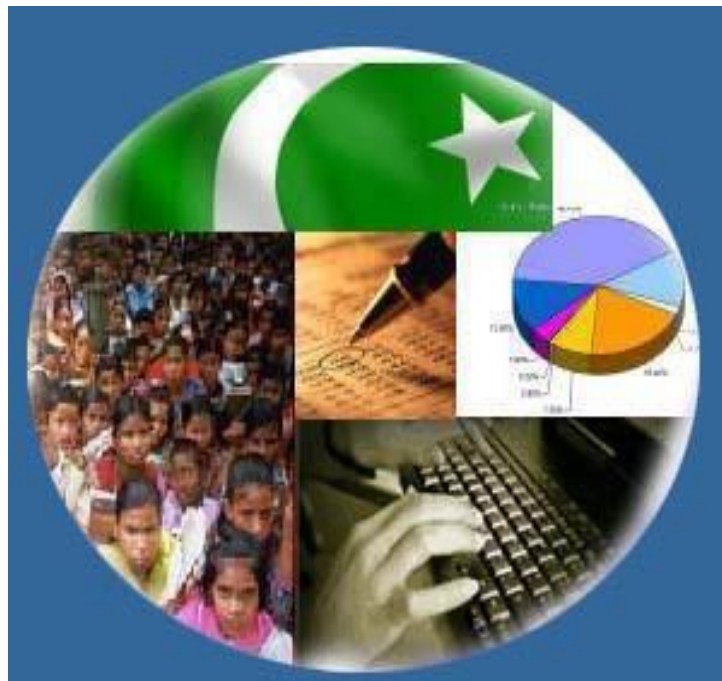




# Monthly Review on Price Indices



**March, 2020**  
**(Base Year 2015-16)**

**Government of Pakistan**  
**Ministry of Planning, Development & Special Initiatives**  
**Pakistan Bureau of Statistics**  
**Islamabad**



## Inflation in Brief

1. **CPI inflation General**, increased by 10.2% on year-on-year basis in March 2020 as compared to an increase of 12.4% in the previous month and 8.6% in March 2019. On month-on-month basis, it increased by 0.04% in March 2020 as compared to a decrease of 1.0% in the previous month and an increase of 2.0% in March 2019.
2. **CPI inflation Urban**, increased by 9.3% on year-on-year basis in March 2020 as compared to an increase of 11.2% in the previous month and 8.9% in March 2019. On month-on-month basis, it increased by 0.1% in March 2020 as compared to a decrease of 1.1% in the previous month and an increase of 1.9% in March 2019.
3. **CPI inflation Rural**, increased by 11.7% on year-on-year basis in March 2020 as compared to an increase of 14.2% in the previous month and 8.2% in March 2019. On month-on-month basis, it decreased by 0.1% in March 2020 as compared to a decrease of 1.0% in the previous month and an increase of 2.2% in March 2019.
4. **SPI inflation** on YoY increased by 11.8% in March 2020 as compared to an increase of 14.5% a month earlier and an increase of 10.5% in March 2019. On MoM basis, it decreased by 0.3% in March 2020 as compared to a decrease of 0.8% a month earlier and an increase of 2.1% in March 2019.
5. **WPI inflation** on YoY basis increased by 9.2% in March 2020 as compared to an increase of 12.6% a month earlier and an increase of 16.6% in March 2019. WPI inflation on MoM basis it decreased by 0.9% in March 2020 as compared to a decrease of 0.8% a month earlier and an increase of 2.2% in corresponding month of last year i.e. March 2019.
6. Figures 1.a and 1.b show graphically the data of Table 1. Table 1.1 shows “Period Average” and “YoY” percent changes in indices of three years.

Table 1.a General Inflation (%) (Base 2015-16)																		
PERIOD	CPI														SPI**		WPI	
	General						Food				Non-Food							
	National		Urban		Rural		Urban		Rural		Urban		Rural		YoY	MoM	YoY	MoM
	YoY	MoM	YoY	MoM	YoY	MoM	YoY	MoM	YoY	MoM	YoY	MoM	YoY	MoM				
Mar-19	8.6	2.0	8.9	1.9	8.2	2.2	8.8	2.5	9.3	3.3	9.0	1.5	7.3	1.3	10.5	2.1	16.6	2.2
Apr-19	8.3	0.7	8.4	0.8	8.1	0.6	8.3	1.3	9.3	0.6	8.4	0.6	7.2	0.6	10.0	0.5	17.1	1.8
May-19	8.4	0.6	8.5	0.7	8.3	0.5	9.0	1.3	9.7	0.6	8.3	0.3	7.1	0.4	9.9	0.6	16.5	1.5
Jun-19	8.0	0.5	8.1	0.3	7.9	0.7	7.5	-0.3	9.1	0.7	8.4	0.7	7.0	0.7	9.3	0.9	14.0	0.2
Jul-19	8.4	1.8	8.7	2.0	7.9	1.6	7.9	1.0	9.3	1.7	9.2	2.5	6.7	1.5	8.9	1.0	13.3	3.1
Aug-19	10.5	1.6	10.6	1.5	10.3	1.9	11.9	3.1	12.6	2.9	9.9	0.5	8.4	1.1	12.1	2.7	14.1	1.2
Sep-19	11.4	0.8	11.6	0.7	11.1	0.8	15.0	2.0	15.0	1.8	9.7	0.0	8.0	0.0	14.7	1.9	15.9	0.1
Oct-19	11.0	1.8	10.9	1.6	11.3	2.2	13.7	1.4	14.6	2.6	9.3	1.7	8.7	1.8	15.1	2.7	13.3	2.0
Nov-19	12.7	1.3	12.1	1.0	13.6	1.9	16.6	2.4	19.3	3.4	9.6	0.2	9.0	0.6	20.2	3.7	11.2	-0.8
Dec-19	12.6	-0.3	12.0	-0.4	13.6	-0.3	16.7	-1.7	19.7	-1.1	9.5	0.4	8.8	0.4	18.1	-2.0	12.4	-0.3
Jan-20	14.6	2.0	13.4	1.7	16.3	2.4	19.5	2.7	23.8	3.4	10.2	1.1	10.5	1.5	18.3	0.5	15.4	1.8
Feb-20	12.4	-1.0	11.2	-1.1	14.2	-1.0	15.2	-1.4	19.7	-1.6	9.1	-0.9	9.8	-0.4	14.5	-0.8	12.6	-0.8
Mar-20	10.2	0.04	9.3	0.1	11.7	-0.1	13.0	0.6	15.5	-0.3	7.3	-0.1	8.5	0.1	11.8	-0.3	9.2	-0.9

\*\* SPI for quintile 1. Digits 0.0\* are due to rounding off.

7. **Core inflation** measured by **non-food non-energy Urban CPI** (Core NFNE) increased by 7.4% on (YoY) basis in March 2020 as compared to an increase of 8.0% in the previous month and 7.2% in March 2019. On (MoM) basis, it increased by 0.3% in March 2020 as compared to increase of 0.2% in previous month, and an increase of 0.8% in corresponding month of last year i.e. March 2019.
8. **Core inflation** measured by **non-food non-energy Rural CPI** (Core NFNE) increased by 9.4% on (YoY) basis in March 2020 as compared to an increase of 9.4% in the previous month and 6.5% in March 2019. On (MoM) basis, it increased by 0.6% in March 2020 as compared to an increase of 0.5% in previous month, and an increase of 0.6% in corresponding month of last year i.e. March 2019.
9. **Core inflation**, measured by 20% weighted trimmed mean **Urban CPI** (Core Trimmed) increased by 8.7% on (YoY) basis in March 2020 as compared to 9.7% in the previous month and by 7.3% in March 2019. On (MoM) basis, it increased by 0.3% in March 2020 as compared to an increase of 0.1% in the previous month and an increase of 0.8% in corresponding month of last year i.e. March 2019.
10. **Core inflation**, measured by 20% weighted trimmed mean **Rural CPI** (Core Trimmed) increased by 11.4% on (YoY) basis in March 2020 as compared to 12.8% in the previous month and by 6.5% in March 2019. On (MoM) basis, it increased by 0.1% in March 2020 as compared to an increase of 0.6% in the previous month and an increase of 0.6% in corresponding month of last year i.e. March 2019.

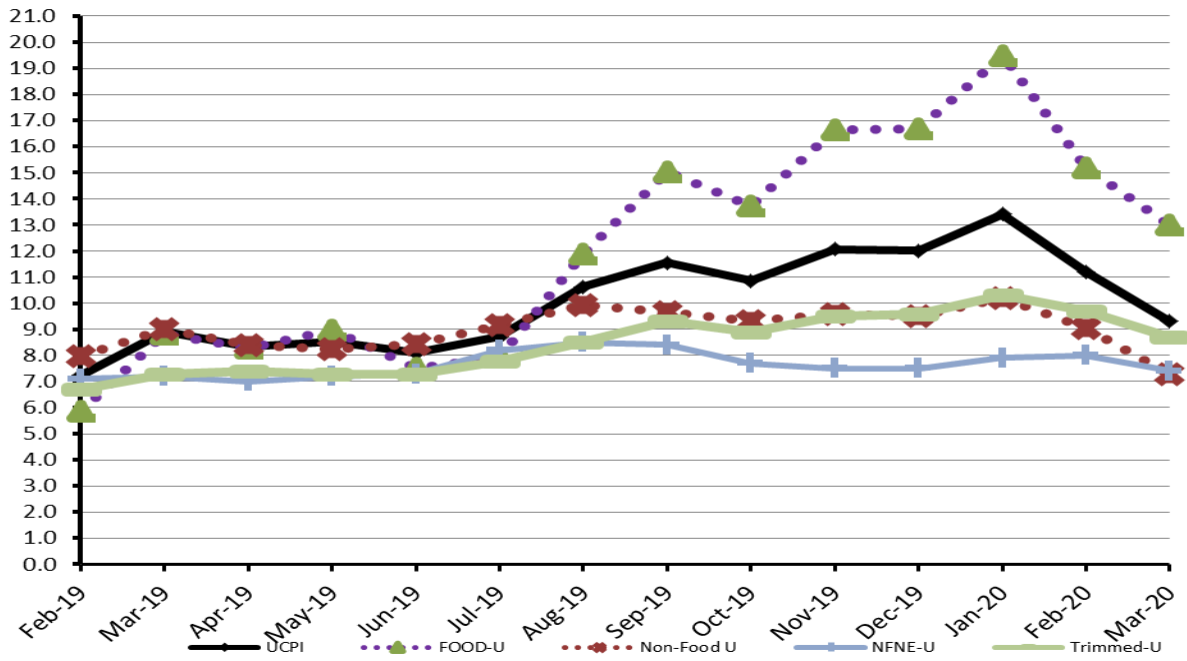
**Table 1.b Core Inflation (%) (Base 2015-16)**

Period	NFNE				Trimmed			
	Urban		Rural		Urban		Rural	
	YoY	MoM	YoY	MoM	YoY	MoM	YoY	MoM
Mar-19	7.2	0.8	6.5	0.6	7.3	0.8	6.5	0.6
Apr-19	7.0	1.1	6.8	1.2	7.4	1.1	7.3	0.8
May-19	7.2	0.5	6.8	0.4	7.3	0.5	7.2	0.5
Jun-19	7.3	0.2	6.7	0.3	7.3	0.4	7.2	0.7
Jul-19	8.2	1.8	7.8	2.0	7.8	1.4	7.4	1.6
Aug-19	8.5	0.4	8.8	1.0	8.5	0.6	8.7	1.2
Sep-19	8.4	0.4	8.8	0.3	9.3	0.6	9.6	0.6
Oct-19	7.7	0.5	8.6	0.7	8.9	0.5	9.4	0.7
Nov-19	7.5	0.3	8.4	0.5	9.5	0.4	10.7	0.7
Dec-19	7.5	0.4	8.1	0.3	9.6	0.2	10.8	0.3
Jan-20	7.9	1.1	9.0	1.0	10.3	1.2	12.7	1.9
Feb-20	8.0	0.2	9.4	0.5	9.7	0.1	12.8	0.6
Mar-20	7.4	0.3	9.4	0.6	8.7	0.3	11.4	0.1

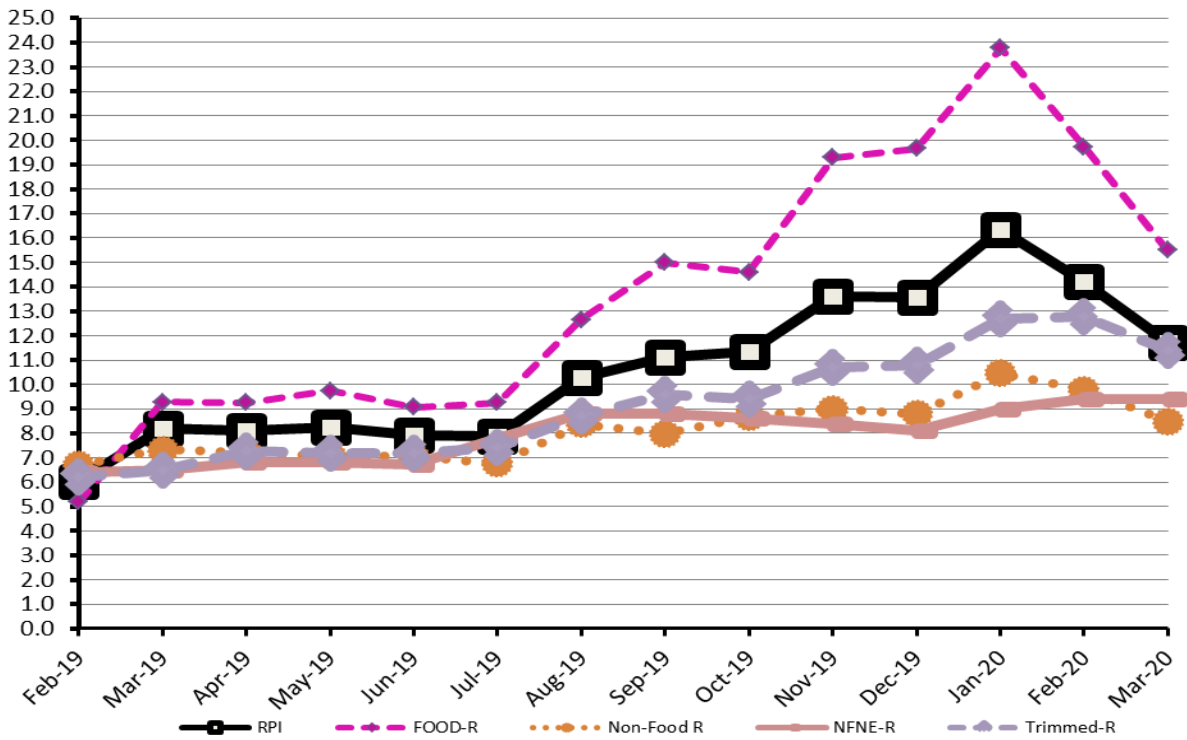
**Table 1.1 Period Average and YoY % Change**

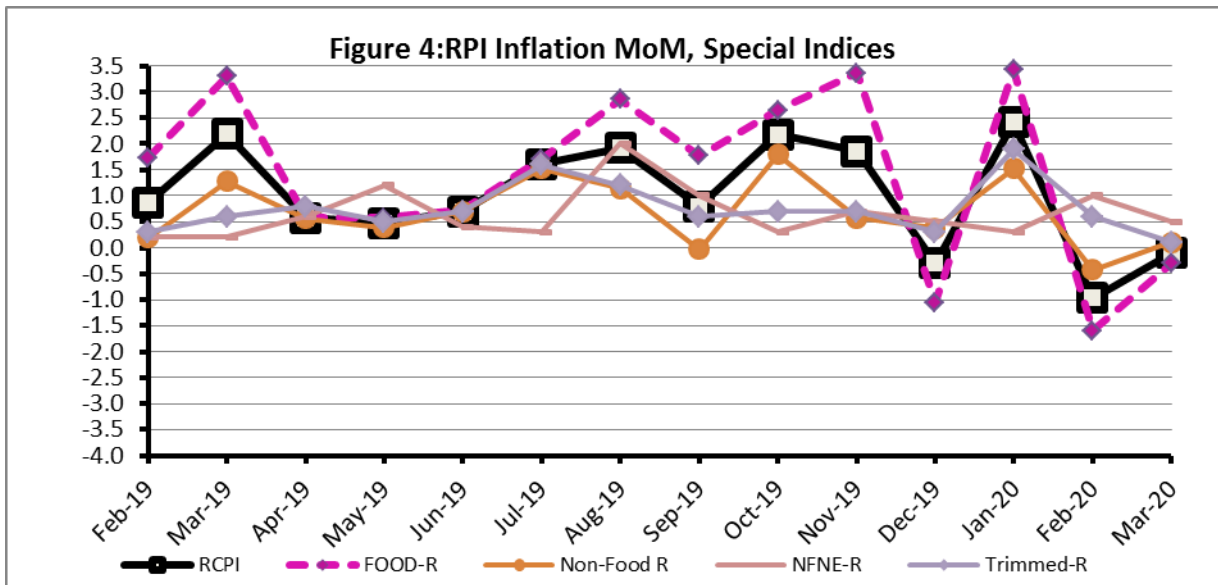
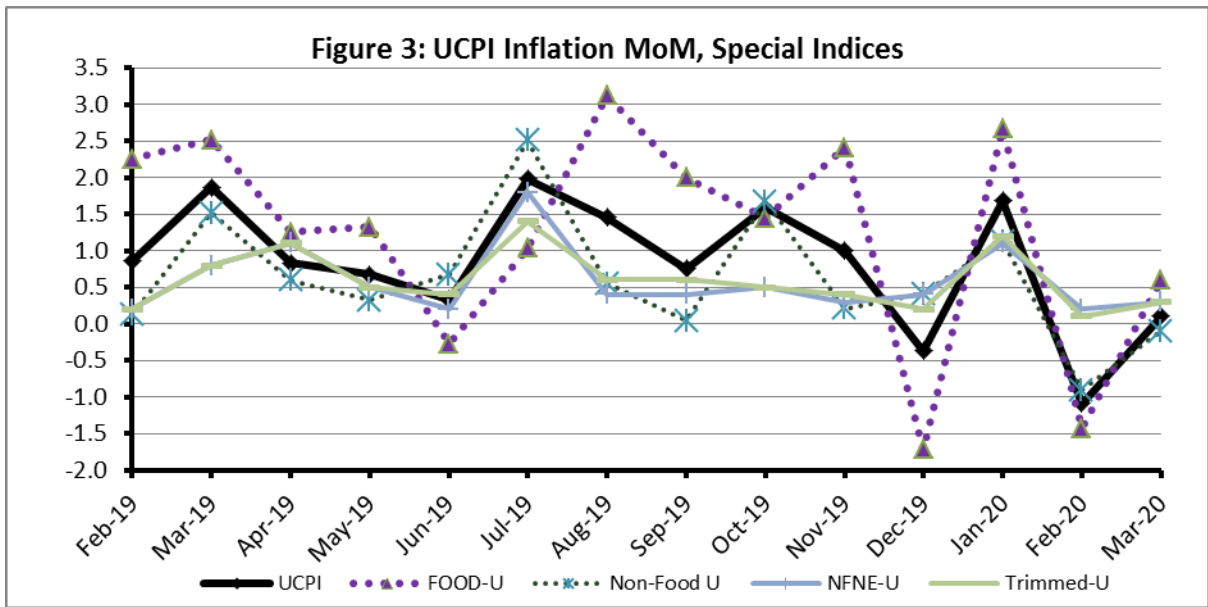
INDEX	Average July- March % changes			March over March % changes		
	2019-2020	2018-2019	2017-2018	2020	2019	2018
<b>CPI (National)</b>	11.53	6.31	4.63	10.24	8.64	3.59
<b>CPI(Urban)</b>	11.08	6.67	5.07	9.31	8.93	4.00
<b>CPI(Rural)</b>	12.23	5.74	3.98	11.67	8.20	2.98
<b>SPI</b>	14.85	3.58	2.82	11.78	10.46	-1.33
<b>WPI</b>	12.99	16.03	4.10	9.19	16.56	5.42

**Figure 1: UCPI Inflation YoY, Special Indices**

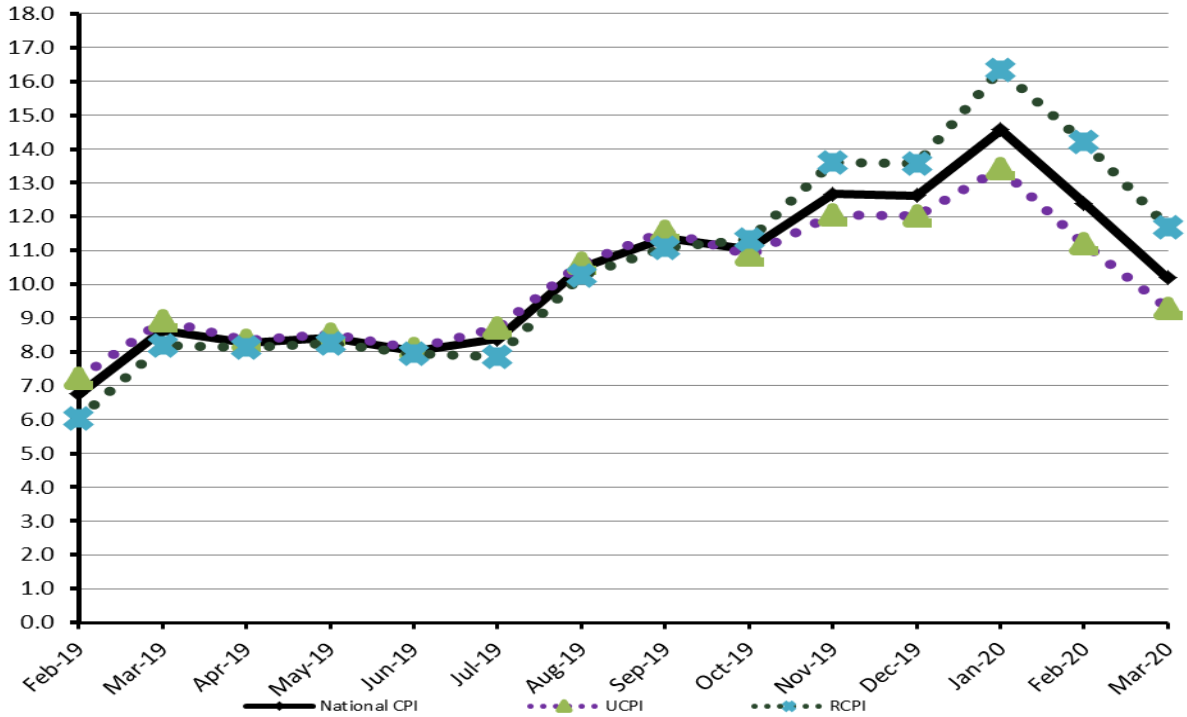


**Figure 2: RCPI Inflation YoY, Special Indices**

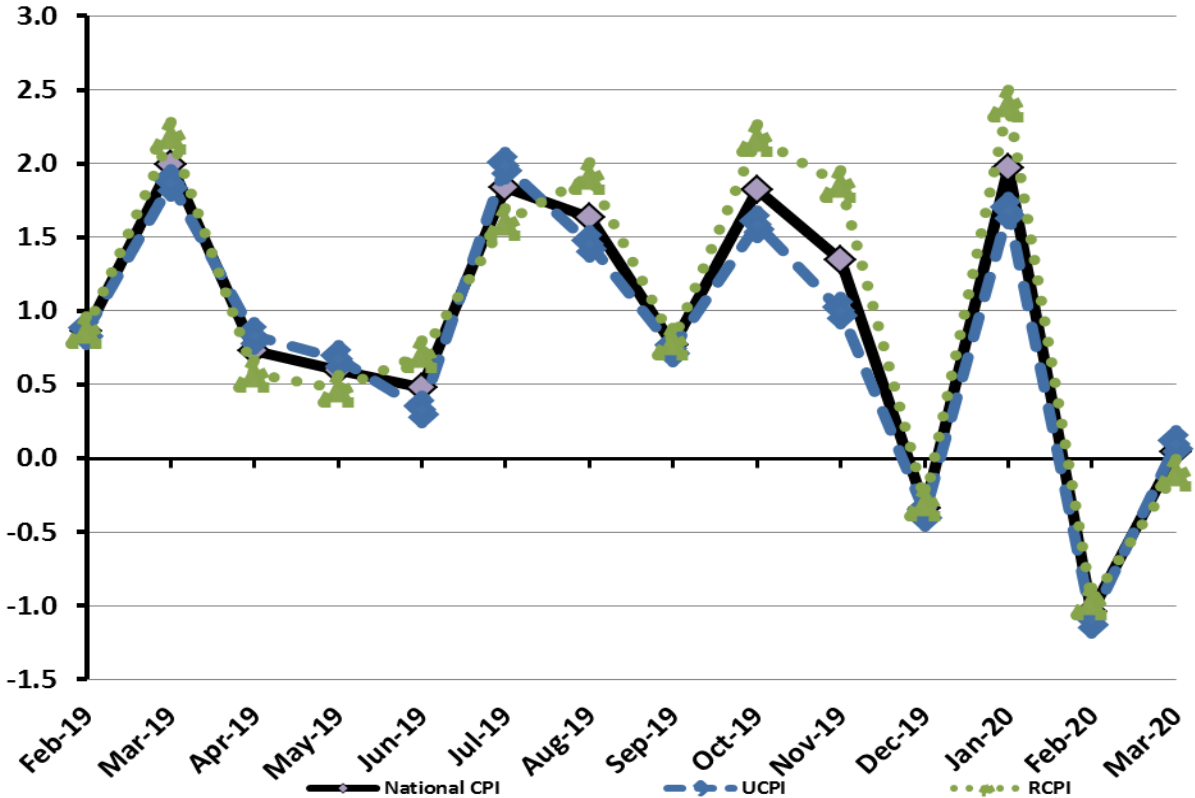




**Figure 5: CPI Y.o.Y (National, Urban, Rural)**



**Figure 6: CPI M.o.M (National, Urban, Rural)**



## I. National Consumer Price Index (N-CPI)

The **National Consumer Price Index** of March 2020 is increased by 0.04% over February 2020 and increased by 10.24% over corresponding month of the last year i.e. March 2019.

**Table 1 : Consumer Price Index (National) by Group of Commodities and Services (Base 2015-16)**

No	Group	Group Weight (%)	Indices			% Change March 2020 Over		Impact (In % points) Mar 2020 Over	
			Mar 2020	Feb 2020	Mar 2019	Feb 2020	Mar 2019	Feb 2020	Mar 2019
	<b>General</b>	100.00	131.69	131.64	119.46	0.04	10.24	0.04	10.24
1.	Food & Non-alcoholic Bev.	34.58	132.18	132.10	115.25	0.07	14.69	0.02	4.90
	<i>Non-perishable Food Items</i>	29.60	129.99	130.65	113.45	-0.51	14.58	-0.15	4.10
	<i>Perishable Food Items</i>	4.99	145.20	140.66	125.94	3.23	15.29	0.17	0.80
2.	Alcoholic Bev.& Tobacco	1.02	136.40	136.28	115.04	0.09	18.57	0.00	0.18
3.	Clothing & Footwear	8.60	132.72	130.68	119.60	1.57	10.97	0.13	0.94
4.	Housing, Water, Electricity, Gas & Fuels	23.63	129.17	129.11	123.13	0.04	4.90	0.01	1.19
5.	Furnishing & Household Equipment Maintenance	4.10	127.88	127.02	116.10	0.67	10.14	0.03	0.40
6.	Health	2.79	139.55	138.09	124.14	1.06	12.41	0.03	0.36
7.	Transport	5.91	139.18	145.60	124.87	-4.41	11.46	-0.29	0.71
8.	Communication	2.21	106.96	106.96	102.99	0.00	3.86	0.00	0.07
9.	Recreation & Culture	1.59	119.54	119.03	112.86	0.43	5.92	0.01	0.09
10.	Education	3.79	142.40	142.11	136.25	0.20	4.51	0.01	0.19
11.	Restaurants & Hotels	6.92	130.63	129.86	120.22	0.59	8.66	0.04	0.60
12.	Miscellaneous	4.87	135.75	134.42	121.40	0.99	11.82	0.05	0.59



## II. Urban Consumer Price Index (UCPI)

The **Urban Consumer Price Index** of March 2020 is increased by 0.13% over February 2020 and increased by 9.31% over corresponding month of the last year i.e. March 2019.

**Table 2 : Consumer Price Index (Urban) by Group of Commodities and Services (Base 2015-16)**

No	Group	Group Weight (%)	Indices			% Change March 2020 Over		Impact (In % points) Mar 2020 Over	
			Mar 2020	Feb 2020	Mar 2019	Feb 2020	Mar 2019	Feb 2020	Mar 2019
	General	100.00	131.49	131.32	120.29	0.13	9.31	0.13	9.31
1.	Food & Non-alcoholic Bev.	30.42	130.93	130.25	115.15	0.52	13.70	0.16	3.99
	Non-perishable Food Items	25.97	128.70	128.74	113.02	-0.03	13.87	-0.01	3.38
	Perishable Food Items	4.46	143.95	139.02	127.55	3.55	12.86	0.17	0.61
2.	Alcoholic Bev. & Tobacco	0.85	143.54	143.51	121.90	0.02	17.75	0.00	0.15
3.	Clothing & Footwear	8.01	129.69	127.81	118.00	1.47	9.91	0.11	0.78
4.	Housing, Water, Electricity, Gas & Fuels	27.03	130.40	130.34	124.13	0.05	5.05	0.01	1.41
5.	Furnishing & Household Equipment Maintenance	4.09	128.21	127.57	116.72	0.50	9.84	0.02	0.39
6.	Health	2.31	139.56	138.29	124.41	0.92	12.18	0.02	0.29
7.	Transport	6.14	139.85	146.55	124.65	-4.57	12.19	-0.31	0.78
8.	Communication	2.35	108.22	108.22	102.95	0.00	5.12	0.00	0.10
9.	Recreation & Culture	1.73	118.01	117.38	111.73	0.54	5.62	0.01	0.09
10.	Education	4.88	144.98	144.71	138.71	0.19	4.52	0.01	0.25
11.	Restaurants & Hotels	7.41	129.70	128.88	120.64	0.64	7.51	0.05	0.56
12.	Miscellaneous	4.77	135.66	134.20	122.65	1.09	10.61	0.05	0.52

Main contributors to month-on-month and year-on-year percentage changes are given below and detail is given in Annexure A.

**1. MONTH-ON-MONTH** Top few commodities which varied from previous month are given below: -

**Food Items Increased:** Onions(35.07%), Potatoes(10.93%), Fresh fruits(8.53%), Chicken (3.25%), Milk powder (1.86%), Mustard oil(1.7%), Eggs (1.62%), Condiments and Spices(1.58%), Butter(1.24%), Beans(1.18%), Gur(1.12%), Milk fresh (0.96%) and Meat(0.84%).

**Decreased:** Tomatoes (23.29%), Fish (9.25%), Wheat (8.43%), Fresh vegetables (7.78%), Pulse gram (5.13%), Pulse masoor(3.39%), Wheat flour (3.17%), Pulse mash(2.33%) and Sugar(0.54%)

**Non-food Items Increased:** Footwear (5.84%), Doctor (MBBS) clinic fee (3.24%), Liquified Hydrocarbons (2.27%), Dental services (2.05%), Personal Grooming Services (1.26%), Household equipments(1.22%) and Readymade garments(1.00%).

**Decreased:** Motor fuel (6.17%), Transport services (5.45%) and Solid Fuel (1.13%).

**YEAR-ON-YEAR:** Top few commodities which varied from previous year i.e. March 2019 are given below:-

**Food Items Increased:** Potatoes(107.51%), Onions(92.18%), Pulse moong (69.7%), Pulse mash(47.19%), Butter(43.76%), Vegetable ghee(33.01%), Gur(32.97%), Sugar(30.86%), Condiments & Spices(27.02%), Cooking oil(26.73%), Beans(24.55%), Wheat(19.27%), Besan(17.86%), Mustard oil(17.42%), Pulse masoor(17.22%), Pulse gram(16.76%), Wheat products(15.96%), Fresh vegetables(15.83%), Milk powder (14.75%), Meat(13.51%), Wheat flour (13.51%), Beverages(12.07%), Tea(9.59%) and Milk fresh (9.37%).

**Decreased:** Tomatoes (71.11%) and Fish (1.06%).

**Non-food Items Increased:** Gas charges(54.84%), Drugs and medicines(18.49%), Liquified Hydrocarbons(18.47%), Construction input items(17.6%), Motor Fuel (16.33%), Motor vehicles(15.37%), Woolen cloth(14.41%), Cotton cloth(11.82%), Footwear(11.55%), Motor vehicle accessories(11.26%) and Household equipments(11.03%).

**Decreased:** Electricity charges(13.92%).

### III. Rural Consumer Price Index (RCPI)

The Rural Consumer Price Index of March 2020 is decreased by 0.1% over February 2020 and increased by 11.67% over corresponding month of the last year i.e. March 2019.

**Table 3 : Consumer Price Index (Rural) by Group of Commodities and Services (Base 2015-16)**

No	Group	Group Weight (%)	Indices			% Change March 2020 Over		Impact (In % points) Mar 2020 Over	
			Mar 2020	Feb 2020	Mar 2019	Feb 2020	Mar 2019	Feb 2020	Mar 2019
	<b>General</b>	<b>100.00</b>	132.00	132.13	118.21	-0.10	11.67	-0.10	11.67
1.	Food & Non-alcoholic Bev.	40.87	133.59	134.17	115.37	-0.43	15.79	-0.18	6.30
	Non-perishable Food Items	35.08	131.43	132.79	113.93	-1.02	15.36	-0.36	5.20
	Perishable Food Items	5.79	146.65	142.56	124.08	2.87	18.19	0.18	1.10
2.	Alcoholic Bev. & Tobacco	1.28	129.21	128.99	108.12	0.17	19.51	0.00	0.23
3.	Clothing & Footwear	9.48	136.59	134.33	121.64	1.68	12.29	0.16	1.20
4.	Housing, Water, Electricity, Gas & Fuels	18.49	126.44	126.39	120.91	0.04	4.57	0.01	0.87
5.	Furnishing & Household Equipment Maintenance	4.10	127.38	126.20	115.17	0.94	10.60	0.04	0.42
6.	Health	3.51	139.54	137.89	123.88	1.20	12.64	0.04	0.47
7.	Transport	5.56	138.06	144.02	125.23	-4.14	10.25	-0.25	0.60
8.	Communication	1.99	104.72	104.72	103.06	0.00	1.61	0.00	0.03
9.	Recreation & Culture	1.38	122.45	122.15	115.00	0.25	6.48	0.00	0.09
10.	Education	2.13	133.48	133.12	127.74	0.27	4.49	0.01	0.10
11.	Restaurants & Hotels	6.19	132.31	131.63	119.46	0.52	10.76	0.03	0.67
12.	Miscellaneous	5.02	135.89	134.74	119.61	0.85	13.61	0.04	0.69

Main contributors to month-on-month and year-on-year percentage changes are given below and detail is given in Annexure A.

1. **MONTH-ON-MONTH** Top few commodities which varied from previous month are given below: -

**Food Items Increased:** Onions(40.95%), Fresh fruits(8.04%), Potatoes(6.82%), Beans(3.77%) and Vegetable ghee(1.05%)

**Decreased:** Tomatoes(36.43%), Wheat(7.39%), Fresh Vegetables(5.64%), Pulse Gram(5.07%), Chicken(4.85%), Pulse Masoor(3.45%), Eggs(3.17%), Gram Whole(2.58%), Wheat Flour(2.52%), Pulse Mash(2.05%) and Gur(1.02%).

**Non-food Items Increased:** Footwear (2.93%), Medical Tests(2.7%), Mechanical Services(2.53%), Cotton Cloth(1.88%), Cleaning & Laundering(1.84%), Readymade Garments(1.59%) and Construction Wage Rates(1.43%).

**Decreased:** Motor Fuels (6.69%) and Transport Services (3.43%)

**YEAR-ON-YEAR:** Top few commodities which varied from previous year i.e. March 2019 are given below:-

**Food Items Increased:** Potatoes(120.67%), Onions(100.9%), Pulse Moong(72.29%), Pulse Mash(49.43%), Condiments and Spices(34.04%), Vegetable ghee(32.79%), Sugar(31.36%), Beans(29.91%), Cooking oil(29.6%), Gur(28.4%), Pulse Masoor(26.45%), Wheat(24.28%), Fresh Vegetables(20.61%), Cigarettes(19.87%), Pulse Gram(19.76%), Wheat Flour(18%) and Mustard oil(16.15%).

**Decreased:** Tomatoes (72.94%), Eggs (3.13%) and Chicken (2.41%).

**Non-food Items Increased:** Water Supply(30.55%), Cotton Cloth(16.53%), Motor Fuels(15.74%), Drugs and Medicines(15.08%), Liquified Hydrocarbons(15.06%), Cleaning & Laundering(13.73%), Motor Vehicles Accessories(13.38%), Dental Services(13.17%) and Solid Fuel(12.72%).

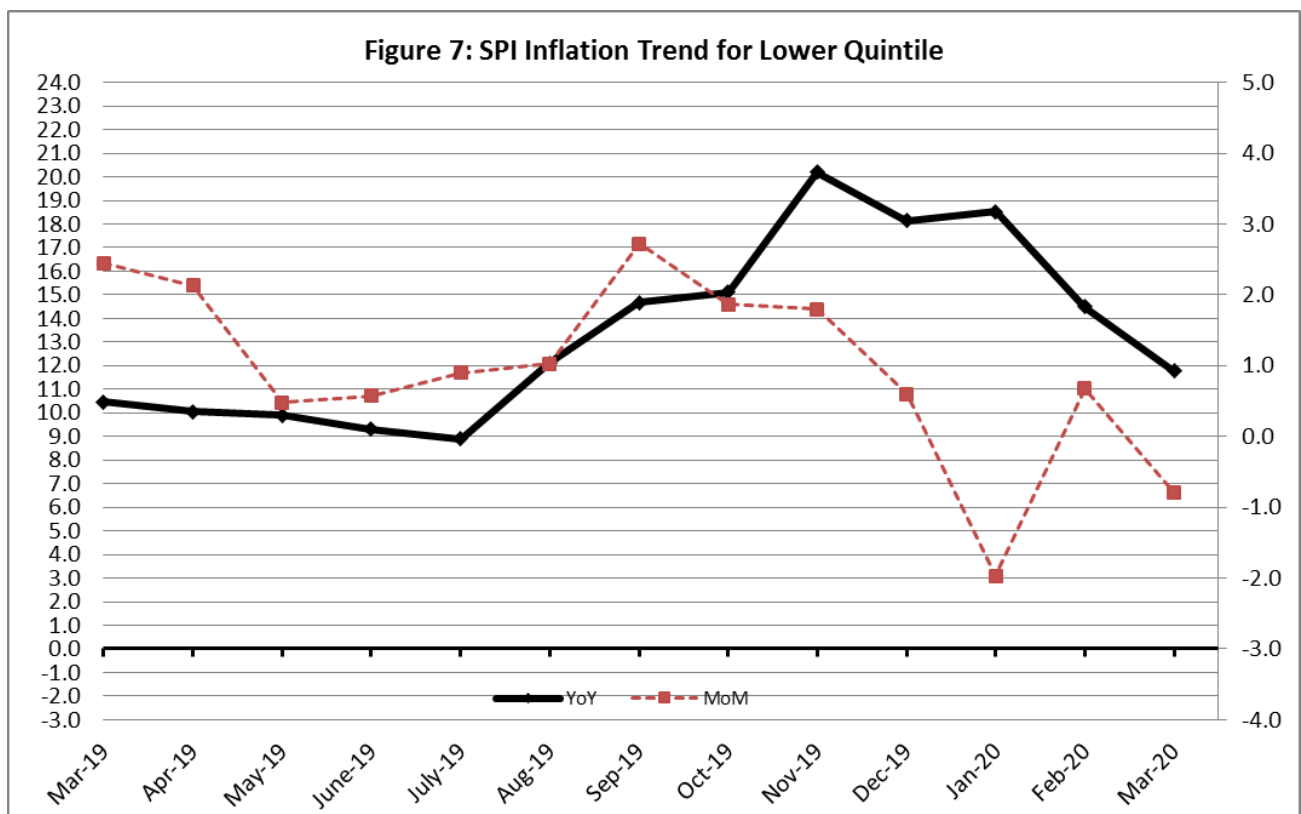
**Decreased:** Electricity Charges (13.92%)

#### IV. Sensitive Price Indicator

Quintile-wise percentage changes YoY and MoM are given below in Table 3. The series from March 2019 to March 2020 is also graphed below in Figure 7.

Table 4: Sensitive Price Indicator (Base 2015-16)					
Quintiles	Indices			% Change March 2020 Over	
	March 2020	February 2020	March 2019	February 2020	March 2019
1	133.26	133.68	119.22	-0.31	11.78
2	128.14	129.28	115.37	-0.88	11.07
3	130.54	131.40	113.55	-0.65	14.96
4	127.80	128.62	111.39	-0.64	14.73
5	130.80	132.44	116.95	-1.24	11.84
Combined	128.98	130.45	114.98	-1.13	12.18

Table 4.1 : Weekly Percentage Change of SPI During March-2020				
Quintiles	% Change with Previous week			
	05-03-2020	12-03-2020	19-03-2020	26-03-2020
Quintile 1	0.28	0.75	0.07	-0.22
Combined	-0.32	0.71	0.05	-1.25



## V. Wholesale Price Index

The Wholesale Price Index for March, 2020 decreased by 0.88% over February 2020. It increased by 9.19% over the corresponding month of the last year. YoY and MoM movements, from March, 2019 to March, 2020 are also graphed below in Figure 4.

**Table 5 : Wholesale Price Index by Group of Commodities (Base 2015-16)**

No.	Group	Group Weight (%)	Indices			% Change March 2020 Over		Impact (In % points) Mar 2020 Over	
			Mar 20	Feb 20	Mar 19	Feb 20	Mar 19	Feb 20	Mar 19
	<b>General</b>	100.00	141.92	143.18	129.98	-0.88	9.19	-0.88	9.19
1.	Agriculture, Forestry & Fishery Products	25.77	140.18	140.02	126.90	0.11	10.46	0.03	2.63
2.	Ores & Minerals, Electricity, Gas & Water	12.01	162.56	162.59	138.56	-0.02	17.32	0.00	2.22
3.	Food Products, Beverages & Tobacco, Textiles, Apparel & Leather Products	31.11	133.66	132.60	119.54	0.80	11.81	0.23	3.38
	i. Food Products, Bev. & Tobacco	20.07	129.62	128.22	112.78	1.09	14.93	0.20	2.60
	ii. Textiles and Apparel	10.33	142.59	142.53	133.32	0.04	6.95	0.00	0.74
	iii. Leather Products	0.71	117.90	111.94	110.18	5.32	7.01	0.03	0.04
4.	Other Transportable Goods except Metal Products, Machinery & Equipment	22.40	147.44	155.06	149.05	-4.91	-1.08	-1.19	-0.28
5.	Metal Products, Machinery & Equipment	8.72	133.92	133.07	115.59	0.64	15.86	0.05	1.23

Main contributors to month-on-month and year-on-year percentage changes are given below and detail is given in Annexure B.

### 1. **MONTH-ON-MONTH** Top few commodities which varied from previous month are given below: -

**Increased:** Footwear's(21.71%), Lathe Machines(21.17%), Fresh Fruits(13.28%), Sorghum / Jowar(12.87%), Edible Roots / Potatoes(10.79%), Eggs(6.02%), Oil Cakes(4.46%), Processed Liquid Milk(3.58%), Meat of Animals(1.64%), Fridge,WashM,SewM,Fans,Iron(1.61%), Soaps & Detergents(1.59%), Dairy Products N.E.C(1.34%), Maize(1.34%), Woven Fabrics(1.29%), Steel Bar & Sheets(1.28%), Raw Milk from Bovine Animals(1.17%), and Fuel Wood in Logs(1.04%).

**Decreased:** Kerosene Oil(14.56%), Vegetables(10.64%), Motor Spirit(7.95%), Furnace Oil(7.87%), Diesel Oil(7.81%), Other Cereal Flour(5.81%), Fertilizers(3.42%), Fish Live Fresh or Chilled(3.2%), Wheat Flour(3.18%), Wheat (2.92%), Pulses(2.02%), Poultry(1.53%) and Cotton Seeds(1.42%).

**YEAR-ON-YEAR** Top few commodities which varied from previous year i.e. March, 2019 are given below: -

**Increased:** Edible Roots / Potatoes(199.06%), Stimulant & Spice Crops(98.31%), Lathe Machines(41.1%), Cotton Seeds(39.86%), Dyeing Material(36.33%), Sugar (31.65%), Bed Foam(30.71%), Natural Gas Liquified(29.95%), Vegetable Ghee(27.64%), Sorghum / Jowar(25.14%),Medicines(24.18%), Chocolate(22.64%), Motor Vehicles(22.08%), Wheat (21.8%), Footwear's(21.71%), Printing Paper(21.31%), Pipe Fittings(20.66%), Salt & Pure Sodium Chloride(19.88%), Cultivators(19.1%), Bicycles(18.91%), Oil Cakes(17.21%), Wheat Flour(16.7%), Motor Spirit(16.46%), Pulses(16.45%), Other Cereal Flour(14.83%), Fish Live Fresh or Chilled(14.07%), Maize(14.02%), Steel Bar & Sheets(13.99%), Vegetable Oils Refined(13.81%), Synthetic Carpets(13.62%), Processed Liquid Milk(13.54%), Steel Products(12.42%), Woven Fabrics(11.94%), Meat of Animals(11.91%), Spices(11.75%), Bricks, Blocks & Tiles(11.68%), Woolen Carpets(11.4%), Dried Fruits & Nuts(11.04%), Readymade Garments(10.6%) and Cotton Fabrics(10.52%)

**Decreased:** Furnace Oil(19.73%), Hides, Skins & Fur Skins, Raw(14.64%), Vegetables & Fruit Juice(4.55%), Fertilizers(2.15%), Kerosene Oil(1.55%), Millet / Bajra(1.54%), Raw Animal Materials / Wool(1.5%), Eggs(1.27%) and Poultry(1.07%).

Figure 8: WPI Inflation



**Annexure A:CPI (Urban) Index Numbers by Commodity Groups & Commodities (2015-16=100)**

Item and Specification	Weight	Index Numbers			% Change in Mar 2020 over			
		Mar 20	Feb 20	Mar 19	Feb 2020	Mar 2019		
<b>General</b>	<b>100.0000</b>	<b>131.49</b>	<b>131.32</b>	<b>120.29</b>	<b>+</b>	<b>0.13</b>	<b>+</b>	<b>9.31</b>
<b>Food and non-alcoholic Bevera</b>	<b>30.4215</b>	<b>130.93</b>	<b>130.25</b>	<b>115.15</b>	<b>+</b>	<b>0.52</b>	<b>+</b>	<b>13.70</b>
01 Wheat	0.6120	125.20	136.73	104.97	-	8.43	+	19.27
02 Wheat flour	3.0075	116.90	120.73	102.99	-	3.17	+	13.51
03 Wheat products	0.0936	125.56	124.81	108.28	+	0.60	+	15.96
04 Besan	0.0830	123.78	126.13	105.02	-	1.86	+	17.86
05 Rice	1.1804	131.98	131.69	121.53	+	0.22	+	8.60
06 Bakery and confectionary	0.4770	126.07	125.69	109.31	+	0.30	+	15.33
07 Nimco	0.1224	124.31	122.87	111.44	+	1.17	+	11.55
08 Meat	2.0411	143.33	142.13	126.27	+	0.84	+	13.51
09 Chicken	1.3631	122.80	118.94	117.81	+	3.25	+	4.24
10 Fish	0.3855	115.10	126.83	116.33	-	9.25	-	1.06
11 Milk fresh	7.1070	121.66	120.50	111.24	+	0.96	+	9.37
12 Milk products	0.6407	124.15	123.00	114.34	+	0.93	+	8.58
13 Milk powder	0.3106	129.49	127.12	112.85	+	1.86	+	14.75
14 Eggs	0.5083	116.96	115.09	117.05	+	1.62	-	0.08
15 Butter	0.0932	165.21	163.19	114.92	+	1.24	+	43.76
16 Mustard oil	0.0120	125.65	123.55	107.01	+	1.70	+	17.42
17 Cooking oil	1.1016	147.02	146.75	116.01	+	0.18	+	26.73
18 Vegetable ghee	1.0324	152.14	151.57	114.38	+	0.38	+	33.01
19 Dry fruits	0.3299	132.27	133.88	117.66	-	1.20	+	12.42
20 Fresh fruits	1.4363	130.81	120.53	126.85	+	8.53	+	3.12
21 Pulse masoor	0.1624	93.87	97.16	80.08	-	3.39	+	17.22
22 Pulse moong	0.1697	143.99	143.92	84.85	+	0.05	+	69.70
23 Pulse mash	0.1152	94.64	96.90	64.30	-	2.33	+	47.19
24 Pulse gram	0.1660	122.41	129.03	104.84	-	5.13	+	16.76
25 Gram whohe	0.0912	128.08	129.28	119.66	-	0.93	+	7.04
26 Beans	0.0408	137.29	135.69	110.23	+	1.18	+	24.55
27 Potatoes	0.4496	173.87	156.74	83.79	+	10.93	+	107.5
28 Onions	0.5928	171.14	126.70	89.05	+	35.07	+	92.18
29 Tomatoes	0.3459	76.46	99.67	264.69	-	23.29	-	71.11
30 Fresh vegetables	1.5306	144.11	156.27	124.42	-	7.78	+	15.83
31 Sugar	1.1130	128.20	128.89	97.97	-	0.54	+	30.86
32 Gur	0.0379	138.91	137.37	104.47	+	1.12	+	32.97
33 Honey	0.1017	118.78	118.40	111.22	+	0.32	+	6.80
34 Sweetmeat	0.3535	138.69	137.53	123.35	+	0.84	+	12.44
35 Ice cream	0.1044	126.01	125.04	112.37	+	0.78	+	12.14
36 Condiments and Spices	1.3340	161.65	159.13	127.26	+	1.58	+	27.02
37 Dessert preparation	0.0419	120.70	118.96	111.67	+	1.46	+	8.09
38 Tea	0.8427	140.74	140.74	128.42	+	0.00	+	9.59
39 Beverages	0.8906	123.31	122.25	110.03	+	0.87	+	12.07
<b>Alcoholic Beverages, Tobacco</b>	<b>0.8540</b>	<b>143.54</b>	<b>143.51</b>	<b>121.90</b>	<b>+</b>	<b>0.02</b>	<b>+</b>	<b>17.75</b>
40 Cigarettes	0.7167	134.73	134.72	110.89	+	0.01	+	21.50
41 Pan prepared	0.1373	189.54	189.39	179.37	+	0.08	+	5.67
<b>Clothing and footwear</b>	<b>8.0096</b>	<b>129.69</b>	<b>127.81</b>	<b>118.00</b>	<b>+</b>	<b>1.47</b>	<b>+</b>	<b>9.91</b>
42 Cotton cloth	2.2227	128.83	127.83	115.21	+	0.78	+	11.82
43 Woolen cloth	0.8361	125.98	125.76	110.11	+	0.17	+	14.41
44 Readymade garments	1.3196	129.95	128.66	122.59	+	1.00	+	6.00
45 Woolen readymade garments	0.4307	126.88	126.89	115.91	-	0.01	+	9.46
46 Tailoring	1.0741	136.89	136.79	126.96	+	0.07	+	7.82
47 Hosiry	0.4070	127.52	127.40	121.85	+	0.09	+	4.65
48 Dopatta	0.1713	123.85	122.87	111.04	+	0.80	+	11.54
49 Cleaning and laundring	0.0665	130.50	130.41	121.34	+	0.07	+	7.55
50 Footware	1.4816	129.66	122.51	116.24	+	5.84	+	11.55
<b>Housing, water, Elec., Gas an</b>	<b>27.0332</b>	<b>130.40</b>	<b>130.34</b>	<b>124.13</b>	<b>+</b>	<b>0.05</b>	<b>+</b>	<b>5.05</b>
51 House rent	19.2558	129.68	129.68	122.77	+	0.00	+	5.63
52 Construcion input items	0.3765	142.80	142.64	121.43	+	0.11	+	17.60
53 Construction wage rates	0.2025	148.10	147.66	136.78	+	0.30	+	8.28
54 Water supply	0.5269	131.89	131.89	120.68	+	0.00	+	9.29
55 Garbage collection	0.1064	154.80	154.80	143.43	+	0.00	+	7.93
56 Electricity charges	4.5562	108.04	108.04	125.51	+	0.00	-	13.92
57 Gas charges	1.0807	216.94	216.94	140.11	+	0.00	+	54.84
58 Liquified Hydrocarbons	0.5064	164.55	160.89	138.90	+	2.27	+	18.47
59 Solid Fuel	0.4218	114.27	115.58	108.64	-	1.13	+	5.18

**Annexure A:CPI (Urban) Index Numbers by Commodity Groups & Commodities (2015-16=100)**

Item and Specification	Weight	Index Numbers			% Change in Mar 2020 over			
		Mar 20	Feb 20	Mar 19	Feb 2020	Mar 2019		
<b><i>Furnishing and household equi</i></b>	<b>4.0937</b>	<b>128.21</b>	<b>127.57</b>	<b>116.72</b>	<b>+</b>	<b>0.50</b>	<b>+</b>	<b>9.84</b>
60 Furniture and furnishing	0.4750	128.32	128.23	117.27	+	0.07	+	9.42
61 Carpets	0.0308	111.09	110.97	105.40	+	0.11	+	5.40
62 Household textiles	0.3420	125.71	125.08	121.78	+	0.50	+	3.23
63 Household equipments	1.0032	127.53	125.99	114.86	+	1.22	+	11.03
64 Plastic products	0.0536	116.63	116.63	112.96	+	0.00	+	3.25
65 Major tools & equipments	0.0084	120.32	119.93	111.35	+	0.33	+	8.06
66 Washing soap/detergents/match	1.4112	128.60	128.04	117.04	+	0.44	+	9.88
67 Household servant	0.7695	130.99	130.96	116.74	+	0.02	+	12.21
<b><i>Health</i></b>	<b>2.3098</b>	<b>139.56</b>	<b>138.29</b>	<b>124.41</b>	<b>+</b>	<b>0.92</b>	<b>+</b>	<b>12.18</b>
68 Drugs and medicines	1.0735	138.81	138.19	117.15	+	0.45	+	18.49
69 Therapeutic Appliances and Eq	0.0054	107.20	107.17	106.98	+	0.03	+	0.21
70 Doctor (MBBS) clinic fee	0.4044	168.77	163.48	145.82	+	3.24	+	15.74
71 Dental services	0.0156	118.61	116.23	117.09	+	2.05	+	1.30
72 Medical tests	0.2367	124.34	124.15	119.03	+	0.15	+	4.46
73 Hospitals services	0.5742	127.53	127.47	125.49	+	0.05	+	1.63
<b><i>Transport</i></b>	<b>6.1368</b>	<b>139.85</b>	<b>146.55</b>	<b>124.65</b>	<b>-</b>	<b>4.57</b>	<b>+</b>	<b>12.19</b>
74 Motor vehicles	0.8097	146.48	146.45	126.97	+	0.02	+	15.37
75 Motor vehicle accessories	0.1941	127.83	127.55	114.89	+	0.22	+	11.26
76 Motor fuel	2.9088	151.98	161.97	130.64	-	6.17	+	16.33
77 Mechanical services	0.4290	129.15	129.02	118.87	+	0.10	+	8.65
78 Motor vehicle tax	0.0482	126.72	126.72	124.01	+	0.00	+	2.19
79 Transport services	1.7470	120.92	127.89	116.13	-	5.45	+	4.12
<b><i>Communication</i></b>	<b>2.3536</b>	<b>108.22</b>	<b>108.22</b>	<b>102.95</b>	<b>+</b>	<b>0.00</b>	<b>+</b>	<b>5.12</b>
80 Postal services	0.0190	147.05	147.05	147.05	+	0.00	+	0.00
81 Communication apparatus	0.4524	118.74	118.73	108.73	+	0.01	+	9.21
82 Communication Services	1.8822	105.30	105.30	101.11	+	0.00	+	4.14
<b><i>Recreation and culture</i></b>	<b>1.7301</b>	<b>118.01</b>	<b>117.38</b>	<b>111.73</b>	<b>+</b>	<b>0.54</b>	<b>+</b>	<b>5.62</b>
83 Recreation and culture	0.6478	110.25	108.80	107.17	+	1.33	+	2.87
84 Text books	0.6655	117.25	117.06	108.13	+	0.16	+	8.43
85 Newspapers	0.0716	151.55	151.55	151.55	+	0.00	+	0.00
86 stationery	0.3452	127.11	126.99	118.98	+	0.09	+	6.83
<b><i>Education</i></b>	<b>4.8807</b>	<b>144.98</b>	<b>144.71</b>	<b>138.71</b>	<b>+</b>	<b>0.19</b>	<b>+</b>	<b>4.52</b>
87 Education	4.8807	144.98	144.71	138.71	+	0.19	+	4.52
<b><i>Restaurants and hotels</i></b>	<b>7.4050</b>	<b>129.70</b>	<b>128.88</b>	<b>120.64</b>	<b>+</b>	<b>0.64</b>	<b>+</b>	<b>7.51</b>
88 Readymade food	5.5235	128.93	127.90	119.13	+	0.81	+	8.23
89 Marriage Hall Charges	1.7514	133.41	133.19	126.04	+	0.17	+	5.85
90 Accommodation Services	0.1301	112.40	112.40	111.78	+	0.00	+	0.55
<b><i>Misc. goods and services</i></b>	<b>4.7720</b>	<b>135.66</b>	<b>134.20</b>	<b>122.65</b>	<b>+</b>	<b>1.09</b>	<b>+</b>	<b>10.61</b>
91 Personal Grooming Services	0.8001	125.75	124.19	118.74	+	1.26	+	5.90
92 Electrical Appliances for Per	0.0465	116.78	116.78	114.30	+	0.00	+	2.17
93 Appliances/Articles/Products	2.9807	127.37	126.55	117.46	+	0.65	+	8.44
94 Personal Effects n.e.c.	0.9447	171.17	167.65	142.77	+	2.10	+	19.89

**Annexure B:CPI (Rural) Index Numbers by Commodity Groups & Commodities (2015-16=100)**

Item and Specification	Weight	Index Numbers			% Change in Mar 2020 over			
		Mar 20	Feb 20	Mar 19	Feb 2020	Mar 2019		
<b>General</b>	<b>100.0000</b>	<b>132.00</b>	<b>132.13</b>	<b>118.21</b>	-	<b>0.10</b>	+	<b>11.67</b>
<b>Food and non-alcoholic Bevera</b>	<b>40.8668</b>	<b>133.59</b>	<b>134.17</b>	<b>115.37</b>	-	<b>0.43</b>	+	<b>15.79</b>
01 Wheat	3.4736	131.02	141.48	105.42	-	7.39	+	24.28
02 Wheat Flour	3.4297	120.23	123.34	101.89	-	2.52	+	18.00
03 Wheat Products	0.1068	124.79	124.91	110.57	-	0.10	+	12.86
04 Besan	0.0728	129.89	132.22	110.77	-	1.76	+	17.26
05 Rice	1.5501	161.98	161.03	145.54	+	0.59	+	11.30
06 Bakery and Confectionary	0.3702	125.74	124.81	112.67	+	0.75	+	11.60
07 Nimco	0.0774	118.03	116.83	107.82	+	1.03	+	9.47
08 Meat	1.7146	143.87	142.49	130.38	+	0.97	+	10.35
09 Chicken	1.4641	123.50	129.79	126.55	-	4.85	-	2.41
10 Fish	0.2640	125.74	125.71	120.45	+	0.02	+	4.39
11 Milk fresh	10.3803	122.98	122.63	113.31	+	0.29	+	8.53
12 Milk products	0.9624	124.46	124.29	115.45	+	0.14	+	7.80
13 Milk powder	0.1062	123.27	121.90	105.44	+	1.12	+	16.91
14 Eggs	0.5665	114.65	118.40	118.35	-	3.17	-	3.13
15 Butter	0.3333	127.54	127.23	117.66	+	0.24	+	8.40
16 Mustard oil	0.0136	130.05	129.10	111.97	+	0.74	+	16.15
17 Cooking oil	0.6011	152.84	152.48	117.93	+	0.24	+	29.60
18 Vegetable ghee	2.3764	160.64	158.97	120.97	+	1.05	+	32.79
19 Dry fruits	0.2496	138.75	138.70	124.37	+	0.04	+	11.56
20 Fresh fruits	1.4505	128.90	119.31	120.33	+	8.04	+	7.12
21 Pulse Masoor	0.2076	99.87	103.44	78.98	-	3.45	+	26.45
22 Pulse Moong	0.2510	154.37	155.08	89.60	-	0.46	+	<u>72.29</u>
23 Pulse Mash	0.1465	96.68	98.70	64.70	-	2.05	+	49.43
24 Pulse Gram	0.2751	122.38	128.91	102.19	-	5.07	+	19.76
25 Gram Whole	0.1116	124.37	127.67	117.21	-	2.58	+	6.11
26 Beans	0.0896	150.71	145.24	116.01	+	3.77	+	29.91
27 Potatoes	0.7437	178.94	167.52	81.09	+	6.82	+	<u>120.6</u>
28 Onions	0.8965	167.27	118.67	83.26	+	40.95	+	<u>100.9</u>
29 Tomatoes	0.5069	71.28	112.12	263.46	-	36.43	-	<u>72.94</u>
30 Fresh Vegetables	2.0947	152.22	161.31	126.21	-	5.64	+	20.61
31 Sugar	2.0296	129.13	130.07	98.30	-	0.72	+	31.36
32 Gur	0.1522	131.24	132.59	102.21	-	1.02	+	28.40
33 Honey	0.0296	122.60	122.50	119.20	+	0.08	+	2.85
34 Sweetmeat	0.3967	126.10	125.39	112.04	+	0.57	+	12.55
35 Ice Cream	0.0568	125.95	122.09	114.22	+	3.16	+	10.27
36 Condiments and Spices	1.4919	153.53	153.42	114.54	+	0.07	+	34.04
37 Dessert Preparation	0.0133	115.77	114.56	108.67	+	1.06	+	6.53
38 Tea	1.2566	137.87	137.87	125.74	+	0.00	+	9.65
39 Beverages	0.5537	123.45	122.92	108.28	+	0.43	+	14.01
<b>Alcoholic Beverages, Tobacco</b>	<b>1.2786</b>	<b>129.21</b>	<b>128.99</b>	<b>108.12</b>	+	<b>0.17</b>	+	<b>19.51</b>
40 Cigarettes	1.2364	128.25	128.15	106.99	+	0.08	+	19.87
41 Pan Prepared	0.0422	157.44	153.63	141.17	+	2.48	+	11.53
<b>Clothing and footwear</b>	<b>9.4826</b>	<b>136.59</b>	<b>134.33</b>	<b>121.64</b>	+	<b>1.68</b>	+	<b>12.29</b>
42 Cotton Cloth	2.8381	147.58	144.86	126.65	+	1.88	+	16.53
43 Woolen Cloth	1.0959	125.62	124.64	114.13	+	0.79	+	10.07
44 Readymade Garments	1.1345	133.09	131.01	118.69	+	1.59	+	12.13
45 Woolen Readymade Garments	0.5401	130.27	130.27	119.13	+	0.00	+	9.35
46 Tailoring	1.2999	133.68	133.68	126.53	+	0.00	+	5.65
47 Hosiry	0.4322	155.66	148.55	131.61	+	4.79	+	18.27
48 Dopatta	0.2078	130.72	129.82	114.70	+	0.69	+	13.97
49 Cleaning and Laundering	0.0176	128.85	126.52	113.29	+	1.84	+	13.73
50 Footware	1.9165	128.84	125.17	116.24	+	2.93	+	10.84
<b>Housing, water, Elec., Gas an</b>	<b>18.4853</b>	<b>126.44</b>	<b>126.39</b>	<b>120.91</b>	+	<b>0.04</b>	+	<b>4.57</b>
51 House Rent	8.6110	129.42	129.42	121.76	+	0.00	+	6.29
52 Construction Input Items	0.6306	119.66	118.56	111.17	+	0.93	+	7.64
53 Construction Wage Rates	0.2526	147.17	145.09	131.31	+	1.43	+	12.08
54 Water Supply	0.0645	158.09	158.09	121.10	+	0.00	+	30.55
55 Garbage Collection	0.0080	132.21	132.21	130.71	+	0.00	+	1.15
56 Electricity Charges	3.4431	108.04	108.04	125.51	+	0.00	-	13.92
57 Liquified Hydrocarbons	0.9994	148.28	148.78	128.87	-	0.34	+	15.06
58 Solid Fuel	4.4761	129.30	129.24	114.71	+	0.05	+	12.72
<b>Furnishing and household equi</b>	<b>4.1031</b>	<b>127.38</b>	<b>126.20</b>	<b>115.17</b>	+	<b>0.94</b>	+	<b>10.60</b>
59 Furniture and Furnishing	0.5786	129.43	128.55	115.07	+	0.68	+	12.48



**Annexure B:CPI (Rural) Index Numbers by Commodity Groups & Commodities (2015-16=100)**

Item and Specification	Weight	Index Numbers			% Change in Mar 2020 over	
		Mar 20	Feb 20	Mar 19	Feb 2020	Mar 2019
60 Household Textiles	0.4382	126.39	124.99	116.52	+ 1.12	+ 8.47
61 Household Equipments	1.2774	132.64	131.43	121.72	+ 0.92	+ 8.97
62 Plastic Products	0.0776	136.39	135.69	123.61	+ 0.52	+ 10.34
63 Major Tools and Equipments	0.0324	115.54	114.44	111.79	+ 0.96	+ 3.35
64 Washing Soaps, Detergents and	1.6989	122.78	121.57	109.62	+ 1.00	+ 12.01
<b>Health</b>	<b>3.5141</b>	<b>139.54</b>	<b>137.89</b>	<b>123.88</b>	<b>+ 1.20</b>	<b>+ 12.64</b>
65 Drugs and Medicines	1.5792	140.99	139.81	122.52	+ 0.84	+ 15.08
66 Doctor Clinic Fee	0.5128	159.78	158.77	134.49	+ 0.64	+ 18.80
67 Dental Services	0.0181	122.97	113.82	108.66	+ 8.04	+ 13.17
68 Medical Tests	0.3967	142.04	138.31	123.60	+ 2.70	+ 14.92
69 Hospitals Services	1.0073	126.28	124.52	120.98	+ 1.41	+ 4.38
<b>Transport</b>	<b>5.5580</b>	<b>138.06</b>	<b>144.02</b>	<b>125.23</b>	<b>- 4.14</b>	<b>+ 10.25</b>
70 Motor Vehicles	0.7305	127.10	127.18	115.23	- 0.06	+ 10.30
71 Motor Vehicles Accessories	0.1572	135.22	133.68	119.26	+ 1.15	+ 13.38
72 Motor Fuels	2.4932	150.04	160.80	129.64	- 6.69	+ 15.74
73 Mechanical Services	0.3645	152.53	148.76	144.83	+ 2.53	+ 5.32
74 Motor Vehicle Tax	0.0174	127.98	127.98	127.98	+ 0.00	+ 0.00
75 Transport Services	1.7952	123.29	127.67	119.69	- 3.43	+ 3.01
<b>Communication</b>	<b>1.9940</b>	<b>104.72</b>	<b>104.72</b>	<b>103.06</b>	<b>+ 0.00</b>	<b>+ 1.61</b>
76 Postal Services	0.0070	149.43	149.43	113.66	+ 0.00	+ 31.47
77 Communication Apparatus	0.3362	118.95	118.95	115.53	+ 0.00	+ 2.96
78 Communication Services	1.6508	101.63	101.63	100.47	+ 0.00	+ 1.15
<b>Recreation and culture</b>	<b>1.3764</b>	<b>122.45</b>	<b>122.15</b>	<b>115.00</b>	<b>+ 0.25</b>	<b>+ 6.48</b>
79 Recreation and Culture	0.4763	127.52	127.19	117.63	+ 0.26	+ 8.41
80 Text Books	0.5047	110.23	109.72	103.90	+ 0.46	+ 6.09
81 Newspapers	0.0230	161.68	161.68	161.68	+ 0.00	+ 0.00
82 Stationery	0.3724	130.12	130.12	123.79	+ 0.00	+ 5.11
<b>Education</b>	<b>2.1342</b>	<b>133.48</b>	<b>133.12</b>	<b>127.74</b>	<b>+ 0.27</b>	<b>+ 4.49</b>
83 Education	2.1342	133.48	133.12	127.74	+ 0.27	+ 4.49
<b>Restaurants and hotels</b>	<b>6.1895</b>	<b>132.31</b>	<b>131.63</b>	<b>119.46</b>	<b>+ 0.52</b>	<b>+ 10.76</b>
84 Readymade Food	3.8001	136.61	135.66	122.48	+ 0.70	+ 11.54
85 Marriage Hall Charges	2.2525	126.93	126.67	115.47	+ 0.21	+ 9.92
86 Accommodation Services	0.1369	101.59	101.59	101.59	+ 0.00	+ 0.00
<b>Misc. goods and services</b>	<b>5.0174</b>	<b>135.89</b>	<b>134.74</b>	<b>119.61</b>	<b>+ 0.85</b>	<b>+ 13.61</b>
87 Personal Grooming Services	1.5363	137.45	137.45	122.49	+ 0.00	+ 12.21
88 Appliances/Articles/Products	2.2746	119.89	119.29	111.35	+ 0.50	+ 7.67
89 Personal Effects n.e.c.	1.2065	164.08	160.42	131.49	+ 2.28	+ 24.79

## Annexure C: Wholesale Price Indices by Major Groups &amp; Commodities

(2015-16=100)

Item and Specification	Weight	Index Numbers			% Change in Mar 2020 over			
		Mar 20	Feb 20	Mar 19	Feb 2020	Mar 2019		
<b>General</b>	<b>100.0000</b>	<b>141.92</b>	<b>143.18</b>	<b>129.98</b>	-	<b>0.88</b>	<b>+</b>	<b>9.19</b>
<b>Agriculture Forestry &amp; Fisher</b>	<b>25.7674</b>	<b>140.18</b>	<b>140.02</b>	<b>126.90</b>	+	<b>0.11</b>	+	<b>10.46</b>
001 Wheat	0.6297	125.55	129.33	103.08	-	2.92	+	21.80
002 Maize	0.6764	147.89	145.94	129.71	+	1.34	+	14.02
003 Rice	2.4413	144.89	145.89	136.44	-	0.69	+	6.19
004 Sorghum / Jowar	0.0214	171.84	152.25	137.32	+	12.87	+	25.14
005 Millet / Bajra	0.0374	120.56	120.58	122.44	-	0.02	-	1.54
006 Vegetables	1.2441	158.24	177.08	146.21	-	10.64	+	8.23
007 Fresh Fruits	1.5144	142.80	126.06	134.11	+	13.28	+	6.48
008 Dry Fruits	0.2478	127.06	127.54	118.71	-	0.38	+	7.03
009 Cotton Seeds	1.1511	134.14	136.07	95.91	-	1.42	+	39.86
010 Other Oil Seeds	0.0722	133.88	136.82	112.56	-	2.15	+	18.94
011 Edible Roots / Potatoes	0.2540	234.19	211.38	78.31	+	10.79	+	<u>199.0</u>
012 Stimulant & Spice Crops	0.1634	285.76	288.43	144.10	-	0.93	+	<u>98.31</u>
013 Pulses	0.4901	119.57	122.04	102.68	-	2.02	+	16.45
014 Sugar Crops	1.0725	114.58	114.58	112.02	+	0.00	+	2.29
015 Fibre Crops	5.3169	172.18	172.18	163.95	+	0.00	+	5.02
016 Unmanufactured Tobacco	0.0742	182.01	173.28	150.22	+	5.04	+	21.16
017 Poultry	0.5633	115.56	117.36	116.81	-	1.53	-	1.07
018 Raw Milk from Bovine Animals	7.0279	117.93	116.57	107.93	+	1.17	+	9.27
019 Eggs	0.5034	117.75	111.06	119.26	+	6.02	-	1.27
020 Raw Animal Materials / Wool	0.0351	105.33	105.33	106.93	+	0.00	-	1.50
021 Hides, Skins & Fur Skins, Raw	0.4834	38.67	38.89	45.30	-	0.57	-	14.64
022 Fuel Wood in Logs	0.0179	115.76	114.57	109.58	+	1.04	+	5.64
023 Fish Live Fresh or Chilled	1.7295	155.00	160.12	135.88	-	3.20	+	14.07
<b>Ores/Minerals, Elec., Gas &amp; W</b>	<b>12.0069</b>	<b>162.56</b>	<b>162.59</b>	<b>138.56</b>	-	<b>0.02</b>	+	<b>17.32</b>
024 Coal not Agglomerated	0.7508	82.17	82.17	82.17	+	0.00	+	0.00
025 Natural Gas Liquified	5.7065	197.99	198.05	152.36	-	0.03	+	29.95
026 Salt & Pure Sodium Chloride	0.0584	154.99	154.99	129.29	+	0.00	+	19.88
027 Electrical Energy	5.4912	136.82	136.82	132.03	+	0.00	+	3.63
<b>Food, Beverages, Tobacco, Textil</b>	<b>31.1122</b>	<b>133.66</b>	<b>132.60</b>	<b>119.54</b>	+	<b>0.80</b>	+	<b>11.81</b>
<b>Food Products, Beverages &amp;</b>	<b>20.0718</b>	<b>129.62</b>	<b>128.22</b>	<b>112.78</b>	+	<b>1.09</b>	+	<b>14.93</b>
028 Meat of Animals	3.4559	140.52	138.25	125.56	+	1.64	+	11.91
029 Vegetables & Fruit Juice	0.0058	112.76	112.66	118.14	+	0.09	-	4.55
030 Dried Fruits & Nuts	0.1733	159.07	158.57	143.26	+	0.32	+	11.04
031 Fruit Juices	0.3880	118.10	117.89	108.01	+	0.18	+	9.34
032 Vegetable Oils Refined	1.9242	123.13	122.35	108.19	+	0.64	+	13.81
033 Vegetable Ghee	1.5632	147.94	147.49	115.90	+	0.31	+	27.64
034 Oil Cakes	0.9611	140.29	134.30	119.69	+	4.46	+	17.21
035 Processed Liquid Milk	4.4437	128.78	124.33	113.42	+	3.58	+	13.54
036 Milk & Cream in Solid Form	0.0316	124.18	124.10	108.94	+	0.06	+	13.99
037 Ice Cream	0.0047	117.05	117.05	106.46	+	0.00	+	9.95
038 Dairy Products N.E.C	0.0117	130.42	128.70	118.89	+	1.34	+	9.70
039 Wheat Flour	2.3034	120.48	124.44	103.24	-	3.18	+	16.70
040 Other Cereal Flour	0.0604	120.85	128.31	105.24	-	5.81	+	14.83
041 Sugar Refined	1.7975	129.00	128.06	97.99	+	0.73	+	31.65
042 Chocolate	0.0139	81.57	81.57	66.51	+	0.00	+	22.64
043 Sugar Confectionary	0.0738	115.50	115.50	111.69	+	0.00	+	3.41
044 Coffee & Tea	0.7303	127.71	127.64	116.58	+	0.05	+	9.55
045 Spices	0.1449	142.71	141.41	127.71	+	0.92	+	11.75
046 Other Food Products	0.0336	112.32	110.93	109.07	+	1.25	+	2.98
047 Mineral Water	0.0207	122.47	122.47	112.28	+	0.00	+	9.08
048 Beverages	0.6303	125.01	125.01	117.32	+	0.00	+	6.55
049 Tobacco Products	1.2998	104.23	104.23	104.23	+	0.00	+	0.00
<b>Textiles &amp; Apparels</b>	<b>10.3289</b>	<b>142.59</b>	<b>142.53</b>	<b>133.32</b>	+	<b>0.04</b>	+	<b>6.95</b>
050 Cotton Yarn	5.2491	164.84	164.84	153.35	+	0.00	+	7.49
051 Nylon Yarn	0.1719	95.24	95.24	95.24	+	0.00	+	0.00
052 Blended Yarn	0.1689	120.22	120.22	116.65	+	0.00	+	3.06
053 Woven Fabrics	0.0128	135.54	133.81	121.08	+	1.29	+	11.94
054 Cotton Fabrics	0.6343	118.29	118.01	107.03	+	0.24	+	10.52
055 Other Fabrics	1.1016	112.30	112.30	109.71	+	0.00	+	2.36
056 Silk & Reyon Fabrics	0.7350	117.76	117.76	112.65	+	0.00	+	4.54
057 Towels	0.1235	117.41	117.41	110.24	+	0.00	+	6.50
058 Blankets	0.0029	96.44	96.44	95.81	+	0.00	+	0.66
059 Bed Sheets	0.0913	112.64	112.64	107.31	+	0.00	+	4.97

## Annexure C: Wholesale Price Indices by Major Groups &amp; Commodities

(2015-16=100)

Item and Specification	Weight	Index Numbers			% Change in Mar 2020 over	
		Mar 20	Feb 20	Mar 19	Feb 2020	Mar 2019
060 Quilts	0.0019	109.35	109.35	107.03	+ 0.00	+ 2.17
061 Woolen Carpets	0.0383	137.01	137.01	122.99	+ 0.00	+ 11.40
062 Synthetic Carpets	0.0566	115.72	115.72	101.85	+ 0.00	+ 13.62
063 Hosiery Products	0.8832	121.90	121.90	116.35	+ 0.00	+ 4.77
064 Readymade Garments	1.0576	131.52	131.16	118.92	+ 0.27	+ 10.60
<b>Leather Products</b>	<b>0.7115</b>	<b>117.90</b>	<b>111.94</b>	<b>110.18</b>	<b>+ 5.32</b>	<b>+ 7.01</b>
065 Leather Without Hair	0.2973	105.65	105.65	105.65	+ 0.00	+ 0.00
066 Other Leather N.E.C	0.2567	111.77	111.77	106.90	+ 0.00	+ 4.56
067 Footwears	0.1575	151.00	124.07	124.07	+ 21.71	+ 21.71
<b>Other Transportable Goods</b>	<b>22.3979</b>	<b>147.44</b>	<b>155.06</b>	<b>149.05</b>	<b>- 4.91</b>	<b>- 1.08</b>
068 Timber	0.0165	111.96	111.96	111.17	+ 0.00	+ 0.71
069 Printing Paper	0.4279	130.70	130.70	107.74	+ 0.00	+ 21.31
070 Hard Board	0.1579	146.50	146.50	146.50	+ 0.00	+ 0.00
071 Motor Spirit	1.6268	151.96	165.08	130.48	- 7.95	+ 16.46
072 Diesel Oil	5.4849	158.01	171.39	153.85	- 7.81	+ 2.70
073 Kerosine Oil	0.2151	166.64	195.04	169.27	- 14.56	- 1.55
074 Furnace Oil	3.2664	216.02	234.47	269.11	- 7.87	- 19.73
075 Mobil Oil	0.7114	122.31	122.31	112.17	+ 0.00	+ 9.04
076 Chemicals	1.7720	129.60	129.69	122.45	- 0.07	+ 5.84
077 Dyeing Material	0.1539	146.16	146.16	107.21	+ 0.00	+ 36.33
078 Fertilizers	2.8657	97.35	100.80	99.49	- 3.42	- 2.15
079 Pesticides	0.2763	110.91	111.24	105.07	- 0.30	+ 5.56
080 Insecticides	0.1276	111.49	111.49	109.99	+ 0.00	+ 1.36
081 Paints & Varnishes	0.1916	124.38	124.68	118.74	- 0.24	+ 4.75
082 Medicines	1.1428	145.37	144.86	117.06	+ 0.35	+ 24.18
083 Soaps & Detergents	0.8168	111.63	109.88	110.39	+ 1.59	+ 1.12
084 Auto Tyres	0.2703	121.54	121.54	110.53	+ 0.00	+ 9.96
085 Plastic Products	0.4550	108.16	108.15	105.62	+ 0.01	+ 2.40
086 Glass sheets	0.2089	145.21	145.21	140.04	+ 0.00	+ 3.69
087 Other Glass Articles	0.1635	132.52	132.20	121.45	+ 0.24	+ 9.11
088 Ceramics & Sanitary Fixture	0.0244	123.86	123.86	114.27	+ 0.00	+ 8.39
089 Bricks, Blocks & Tiles	0.1566	119.43	120.61	106.94	- 0.98	+ 11.68
090 Cement	1.8145	114.13	114.72	112.46	- 0.51	+ 1.48
091 Bed Foam	0.0006	145.73	145.96	111.49	- 0.16	+ 30.71
092 Matches	0.0505	1170.1	1170.1	1127.37	+ 0.00	+ 3.79
<b>Metal Product, Machinery &amp; Eq</b>	<b>8.7156</b>	<b>133.92</b>	<b>133.07</b>	<b>115.59</b>	<b>+ 0.64</b>	<b>+ 15.86</b>
093 Steel Bar & Sheets	1.4615	151.39	149.47	132.81	+ 1.28	+ 13.99
094 Pipe Fittings	0.0780	141.32	141.32	117.12	+ 0.00	+ 20.66
095 Steel Products	0.3879	133.35	133.35	118.62	+ 0.00	+ 12.42
096 Engines & Motors	0.0046	107.29	107.29	107.29	+ 0.00	+ 0.00
097 Vacuum Pumps	0.0155	107.56	107.56	107.56	+ 0.00	+ 0.00
098 Air Conditioners	0.0049	112.46	112.46	102.84	+ 0.00	+ 9.35
099 Cultivators	0.0551	103.75	103.75	87.11	+ 0.00	+ 19.10
100 Chuff Cutter	0.1293	107.14	107.14	102.86	+ 0.00	+ 4.16
101 Tractors	0.0028	109.22	109.22	109.22	+ 0.00	+ 0.00
102 Lathe Machines	0.0525	203.64	168.06	144.32	+ 21.17	+ 41.10
103 Concrete Mixture	0.0107	100.00	100.00	100.00	+ 0.00	+ 0.00
104 Fridge, WashM, SewM, Fans, Iron	1.1645	151.07	148.68	123.20	+ 1.61	+ 22.62
105 Electric Wires	0.0912	125.73	125.73	115.52	+ 0.00	+ 8.84
106 Lighting Equipments	1.4431	116.71	116.71	106.55	+ 0.00	+ 9.54
107 Radio & Television	0.1843	100.59	100.59	96.80	+ 0.00	+ 3.92
108 Motor Vehicles	0.0244	156.02	156.02	127.80	+ 0.00	+ 22.08
109 Motorcycles	0.2570	120.09	120.09	115.97	+ 0.00	+ 3.55
110 Bicycles	3.3483	131.36	131.36	110.47	+ 0.00	+ 18.91