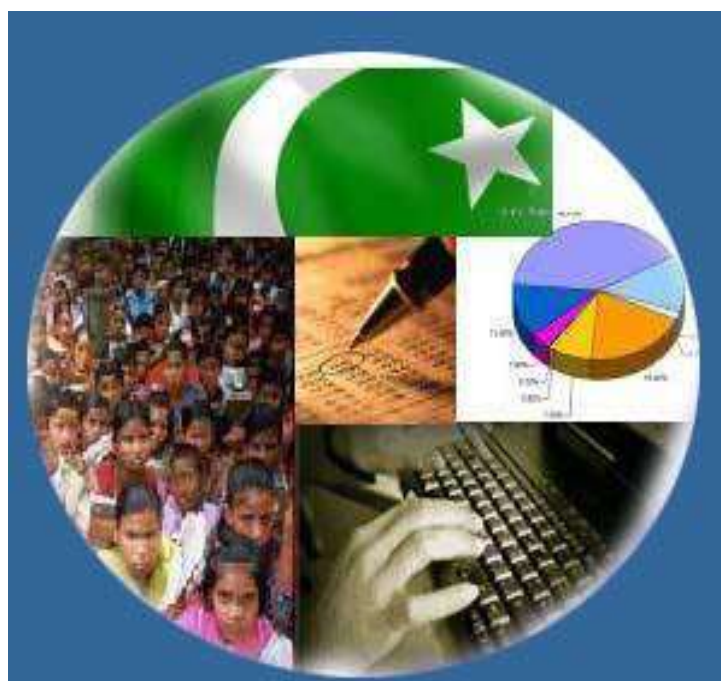




Monthly Review on Price Indices



June, 2021
(Base Year 2015-16)

Government of Pakistan
Ministry of Planning, Development & Special Initiatives
Pakistan Bureau of Statistics
Islamabad

Inflation in Brief

- CPI inflation General**, increased by 9.7% on year-on-year basis in June 2021 as compared to an increase of 10.9% in the previous month and 8.6% in June 2020. On month-on-month basis, it decreased by 0.3% in June 2021 as compared to an increase of 0.1% in the previous month and an increase of 0.8% in June 2020.
- CPI inflation Urban**, increased by 9.6% on year-on-year basis in June 2021 as compared to an increase of 10.8% in the previous month and 7.6% in June 2020. On month-on-month basis, it decreased by 0.4% in June 2021 as compared to an increase of 0.2% in the previous month and an increase of 0.7% in June 2020.
- CPI inflation Rural**, increased by 9.7% on year-on-year basis in June 2021 as compared to an increase of 10.9% in the previous month and 10.0% in June 2020. On month-on-month basis, it decreased by 0.1% in June 2021 as compared to a decrease of 0.03% in the previous month and an increase of 1.0% in June 2020.
- SPI inflation** on YoY increased by 17.6% in June 2021 as compared to an increase of 19.7% a month earlier and an increase of 11.5% in June 2020. On MoM basis, it decreased by 0.4% in June 2021 as compared to an increase of 0.8% a month earlier and an increase of 1.4% in June 2020.
- WPI inflation** on YoY basis increased by 20.9% in June 2021 as compared to an increase of 19.4% a month earlier and an increase of 0.9% in June 2020. WPI inflation on MoM basis increased by 0.9% in June 2021 as compared to an increase of 0.3% a month earlier and a decrease of 0.3% in corresponding month i.e. June 2020.
- Figures 1 and 2 show graphically the yearly data of Table 1.a for Urban and Rural CPI while Table 1.1 shows "Period Average" and "YoY" percent changes in indices of three years.

| Table 1.a General Inflation (%) (Base 2015-16) | | | | | | | | | | | | | | | | | | |
|--|-------------|-------------|-------------|-------------|-------------|--------------|-------------|-------------|-------------|-------------|------------|-------------|------------|-------------|-------------|-------------|-------------|-------------|
| PERIOD | CPI | | | | | | | | | | | | | | SPI** | | WPI | |
| | General | | | | | | Food | | | | Non-Food | | | | | | | |
| | National | | Urban | | Rural | | Urban | | Rural | | Urban | | Rural | | YoY | MoM | YoY | MoM |
| | YoY | MoM | YoY | MoM | YoY | MoM | YoY | MoM | YoY | MoM | YoY | MoM | YoY | MoM | | | | |
| Aug-19 | 10.5 | 1.6 | 10.6 | 1.5 | 10.3 | 1.9 | 11.9 | 3.1 | 12.6 | 2.9 | 9.9 | 0.5 | 8.4 | 1.1 | 12.1 | 2.7 | 14.1 | 1.2 |
| Sep-19 | 11.4 | 0.8 | 11.6 | 0.7 | 11.1 | 0.8 | 15.0 | 2.0 | 15.0 | 1.8 | 9.7 | 0.0 | 8.0 | 0.0 | 14.7 | 1.9 | 15.9 | 0.1 |
| Oct-19 | 11.0 | 1.8 | 10.9 | 1.6 | 11.3 | 2.2 | 13.7 | 1.4 | 14.6 | 2.6 | 9.3 | 1.7 | 8.7 | 1.8 | 15.1 | 2.7 | 13.3 | 2.0 |
| Nov-19 | 12.7 | 1.3 | 12.1 | 1.0 | 13.6 | 1.9 | 16.6 | 2.4 | 19.3 | 3.4 | 9.6 | 0.2 | 9.0 | 0.6 | 20.2 | 3.7 | 11.2 | -0.8 |
| Dec-19 | 12.6 | -0.3 | 12.0 | -0.4 | 13.6 | -0.3 | 16.7 | -1.7 | 19.7 | -1.1 | 9.5 | 0.4 | 8.8 | 0.4 | 18.1 | -2.0 | 12.4 | -0.3 |
| Jan-20 | 14.6 | 2.0 | 13.4 | 1.7 | 16.3 | 2.4 | 19.5 | 2.7 | 23.8 | 3.4 | 10.2 | 1.1 | 10.5 | 1.5 | 18.3 | 0.5 | 15.4 | 1.8 |
| Feb-20 | 12.4 | -1.0 | 11.2 | -1.1 | 14.2 | -1.0 | 15.2 | -1.4 | 19.7 | -1.6 | 9.1 | -0.9 | 9.8 | -0.4 | 14.5 | -0.8 | 12.7 | -0.7 |
| Mar-20 | 10.2 | 0.0 | 9.3 | 0.1 | 11.7 | -0.1 | 13.0 | 0.6 | 15.5 | -0.3 | 7.3 | -0.1 | 8.5 | 0.1 | 11.8 | -0.3 | 9.3 | -0.9 |
| Apr-20 | 8.5 | -0.8 | 7.7 | -0.7 | 9.8 | -1.1 | 10.4 | -1.0 | 12.9 | -1.7 | 6.2 | -0.5 | 7.4 | -0.5 | 9.3 | -1.8 | 4.9 | -2.0 |
| May-20 | 8.2 | 0.3 | 7.3 | 0.3 | 9.7 | 0.3 | 10.6 | 1.5 | 13.7 | 1.4 | 5.4 | -0.4 | 6.4 | -0.5 | 11.0 | 2.2 | 1.5 | -2.1 |
| Jun-20 | 8.6 | 0.8 | 7.6 | 0.7 | 10.0 | 1.0 | 12.9 | 1.8 | 15.2 | 2.0 | 4.7 | 0.0 | 5.8 | 0.1 | 11.5 | 1.4 | 0.9 | -0.3 |
| July-20 | 9.3 | 2.5 | 7.8 | 2.2 | 11.6 | 3.0 | 15.1 | 3.0 | 17.8 | 4.0 | 3.9 | 1.7 | 6.5 | 2.2 | 13.7 | 3.0 | 3.2 | 5.4 |
| Aug-20 | 8.2 | 0.6 | 7.1 | 0.8 | 9.9 | 0.4 | 11.3 | -0.3 | 13.5 | -0.9 | 4.8 | 1.5 | 6.8 | 1.5 | 11.7 | 0.9 | 3.3 | 1.3 |
| Sep-20 | 9.0 | 1.5 | 7.7 | 1.3 | 11.1 | 2.0 | 12.4 | 3.0 | 15.8 | 3.8 | 5.0 | 0.2 | 7.2 | 0.3 | 12.0 | 2.1 | 4.3 | 1.0 |
| Oct-20 | 8.9 | 1.7 | 7.3 | 1.3 | 11.3 | 2.4 | 13.9 | 2.8 | 17.7 | 4.3 | 3.6 | 0.3 | 5.8 | 0.5 | 12.3 | 3.0 | 5.1 | 2.9 |
| Nov-20 | 8.3 | 0.8 | 7.0 | 0.6 | 10.5 | 1.1 | 13.0 | 1.6 | 16.1 | 2.0 | 3.4 | 0.1 | 5.5 | 0.2 | 9.9 | 1.1 | 5.0 | -0.9 |
| Dec-20 | 8.0 | -0.7 | 7.0 | -0.3 | 9.5 | -1.2 | 12.6 | -2.1 | 13.4 | -3.4 | 3.8 | 0.7 | 6.1 | 1.0 | 9.1 | -2.7 | 5.7 | 0.3 |
| Jan-21 | 5.7 | -0.2 | 5.0 | -0.2 | 6.6 | -0.3 | 7.3 | -2.1 | 7.2 | -2.2 | 3.7 | 1.1 | 6.1 | 1.5 | 7.7 | -0.8 | 6.4 | 2.5 |
| Feb-21 | 8.7 | 1.8 | 8.6 | 2.3 | 8.8 | 1.1 | 10.3 | 1.3 | 9.1 | 0.2 | 7.6 | 2.8 | 8.6 | 2.0 | 11.9 | 3.1 | 9.5 | 2.2 |
| Mar-21 | 9.1 | 0.4 | 8.7 | 0.3 | 9.5 | 0.5 | 11.5 | 1.7 | 11.1 | 1.5 | 7.1 | -0.6 | 8.1 | -0.4 | 18.7 | 5.7 | 14.6 | 3.7 |
| Apr-21 | 11.1 | 1.0 | 11.0 | 1.3 | 11.3 | 0.6 | 15.7 | 2.7 | 14.1 | 0.9 | 8.2 | 0.5 | 8.9 | 0.3 | 21.3 | 0.4 | 16.6 | -0.4 |
| May-21 | 10.9 | 0.1 | 10.8 | 0.2 | 10.9 | -0.03 | 15.3 | 1.1 | 12.8 | 0.2 | 8.3 | -0.3 | 9.2 | -0.3 | 19.7 | 0.8 | 19.4 | 0.3 |
| Jun-21 | 9.7 | -0.3 | 9.6 | -0.4 | 9.7 | -0.1 | 11.0 | -1.9 | 9.8 | -0.8 | 8.8 | 0.5 | 9.7 | 0.6 | 17.6 | -0.4 | 20.9 | 0.9 |

** SPI for quintile 1. Digits 0.0* are due to rounding off.

Core inflation (NFNE)

7. Measured by **non-food non-energy Urban** increased by 6.7% on (YoY) basis in June, 2021 as compared to an increase of 6.8% in the previous month and 6.5% in June, 2020. On (MoM) basis, it increased by 0.3% in June, 2021 as compared to increase of 0.2% in previous month, and an increase of 0.4% in corresponding month of last year i.e. June, 2020.
8. Measured by **non-food non-energy Rural** increased by 7.3% on (YoY) basis in June, 2021 as compared to an increase of 7.6% in the previous month and 8.8% in June, 2020. On (MoM) basis, it increased by 0.4% in June, 2021 as compared to an increase of 0.3% in previous month, and an increase of 0.7% in corresponding month of last year i.e. June, 2020.

Core inflation (Trimmed)

9. Measured by 20% **weighted trimmed mean Urban** increased by 9.4% on (YoY) basis in June, 2021 as compared to 10.0% in the previous month and 7.4% in June, 2020. On (MoM) basis, it increased by 0.3% in June, 2021 as compared to an increase of 0.2% in the previous month and an increase of 0.4% in corresponding month of last year i.e. June, 2020.
10. Measured by 20% **weighted trimmed mean Rural** increased by 9.8% on (YoY) basis in June, 2021 as compared to 10.3% in the previous month and by 9.9% in June, 2020. On (MoM) basis, it increased by 0.6% in June, 2021 as compared to an increase of 0.4% in the previous month and an increase of 0.9% in corresponding month of last year i.e. June, 2020.

Table 1.b Core Inflation (%) (Base 2015-16)

| Period | NFNE | | | | Trimmed | | | |
|---------|-------|-----|-------|-----|---------|-----|-------|-----|
| | Urban | | Rural | | Urban | | Rural | |
| | YoY | MoM | YoY | MoM | YoY | MoM | YoY | MoM |
| Jun-20 | 6.5 | 0.4 | 8.8 | 0.7 | 7.4 | 0.4 | 9.9 | 0.9 |
| Jul-20 | 5.3 | 0.6 | 7.8 | 1.1 | 6.7 | 0.9 | 9.8 | 1.5 |
| Aug-20 | 5.6 | 0.7 | 7.6 | 0.8 | 7.0 | 1.3 | 9.3 | 1.0 |
| Sep-20 | 5.5 | 0.3 | 7.8 | 0.4 | 7.1 | 0.4 | 10.0 | 0.9 |
| Oct-20 | 5.6 | 0.6 | 7.6 | 0.6 | 6.5 | 0.6 | 9.5 | 1.1 |
| Nov-20 | 5.6 | 0.3 | 7.4 | 0.3 | 6.3 | 0.2 | 9.1 | 0.4 |
| Dec-20 | 5.6 | 0.4 | 7.7 | 0.5 | 6.2 | 0.4 | 8.8 | 0.6 |
| Jan-21 | 5.4 | 0.9 | 7.8 | 1.1 | 5.7 | 1.0 | 8.1 | 1.2 |
| Feb-21 | 6.4 | 1.1 | 7.7 | 0.5 | 7.9 | 1.0 | 9.2 | 0.5 |
| Mar-21 | 6.3 | 0.2 | 7.3 | 0.3 | 8.1 | 0.4 | 9.4 | 0.3 |
| Apr-21 | 7.0 | 0.9 | 7.7 | 0.7 | 9.8 | 0.6 | 10.6 | 0.2 |
| May-21 | 6.8 | 0.2 | 7.6 | 0.3 | 10.0 | 0.2 | 10.3 | 0.4 |
| June-21 | 6.7 | 0.3 | 7.3 | 0.4 | 9.4 | 0.3 | 9.8 | 0.6 |

Table 1.1 Period Average and Y-o-Y % Change

| INDEX | Average July- June % changes | | | June over June % changes | | |
|----------------|---------------------------------|-----------|-----------|-----------------------------|-----------|-----------|
| | 2020-2021 | 2019-2020 | 2018-2019 | 2020-2021 | 2019-2020 | 2018-2019 |
| CPI (National) | 8.90 | 10.74 | 6.80 | 9.70 | 8.59 | 8.04 |
| CPI(Urban) | 8.14 | 10.17 | 7.09 | 9.68 | 7.65 | 8.10 |
| CPI(Rural) | 10.04 | 11.63 | 6.34 | 9.73 | 10.03 | 7.94 |
| SPI | 13.83 | 13.74 | 5.11 | 17.58 | 11.51 | 9.30 |
| WPI | 9.41 | 10.24 | 15.98 | 20.85 | 0.93 | 13.98 |

Figure 1: Urban Inflation - YoY, Special Indices

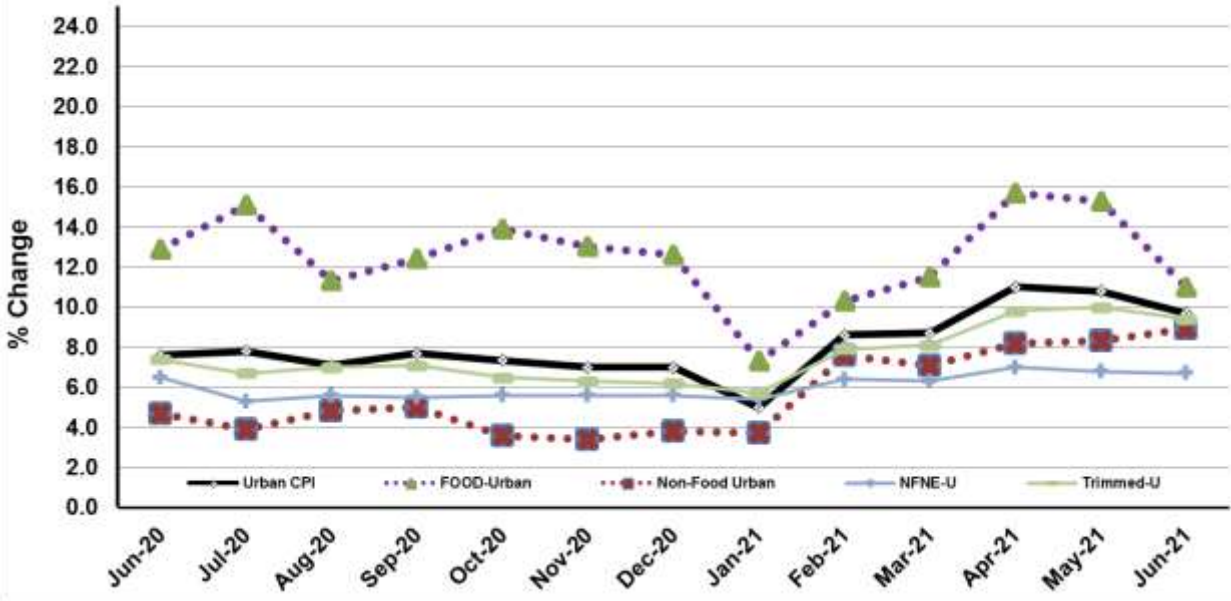
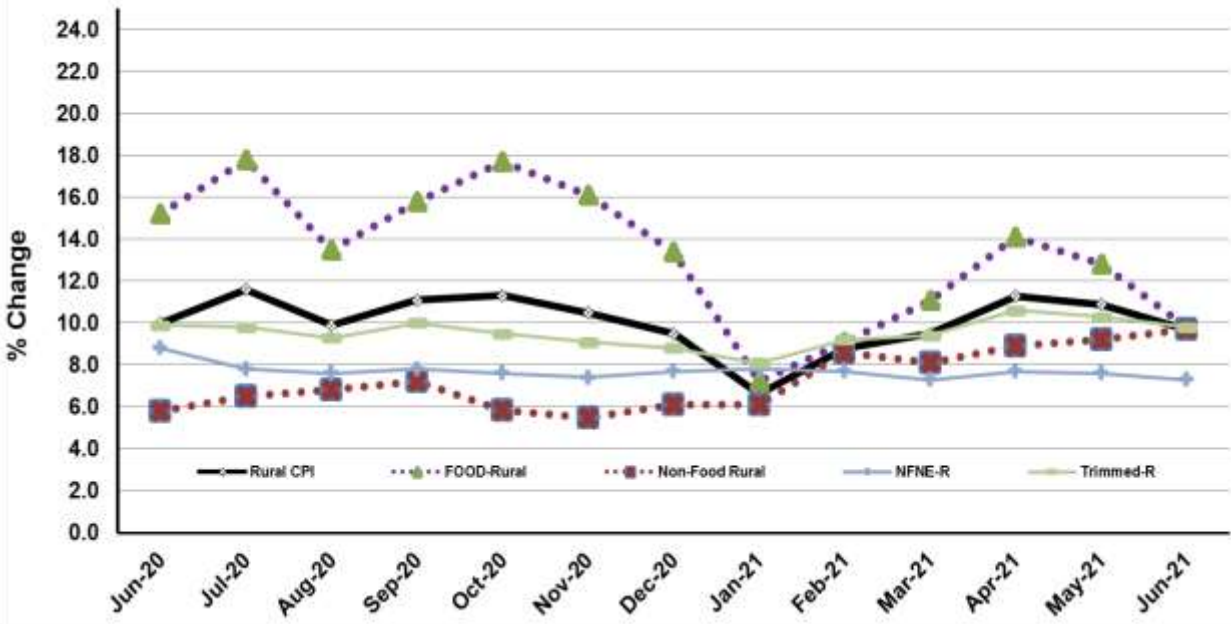
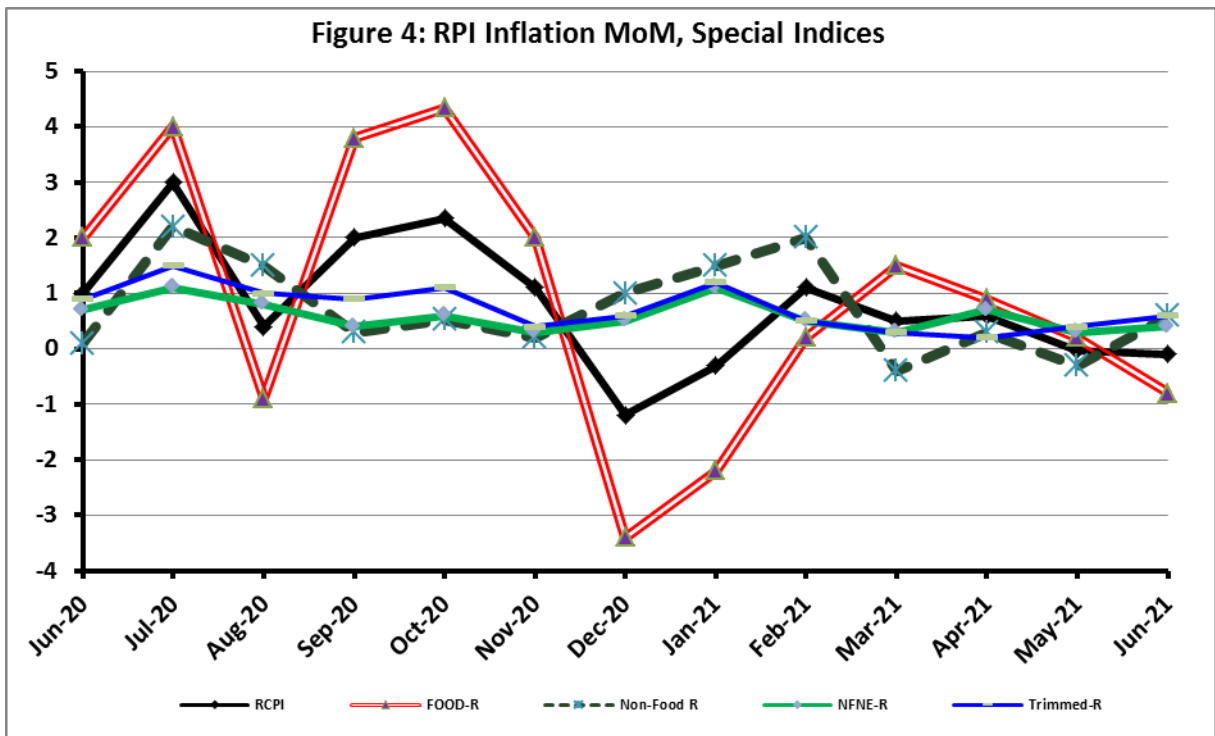
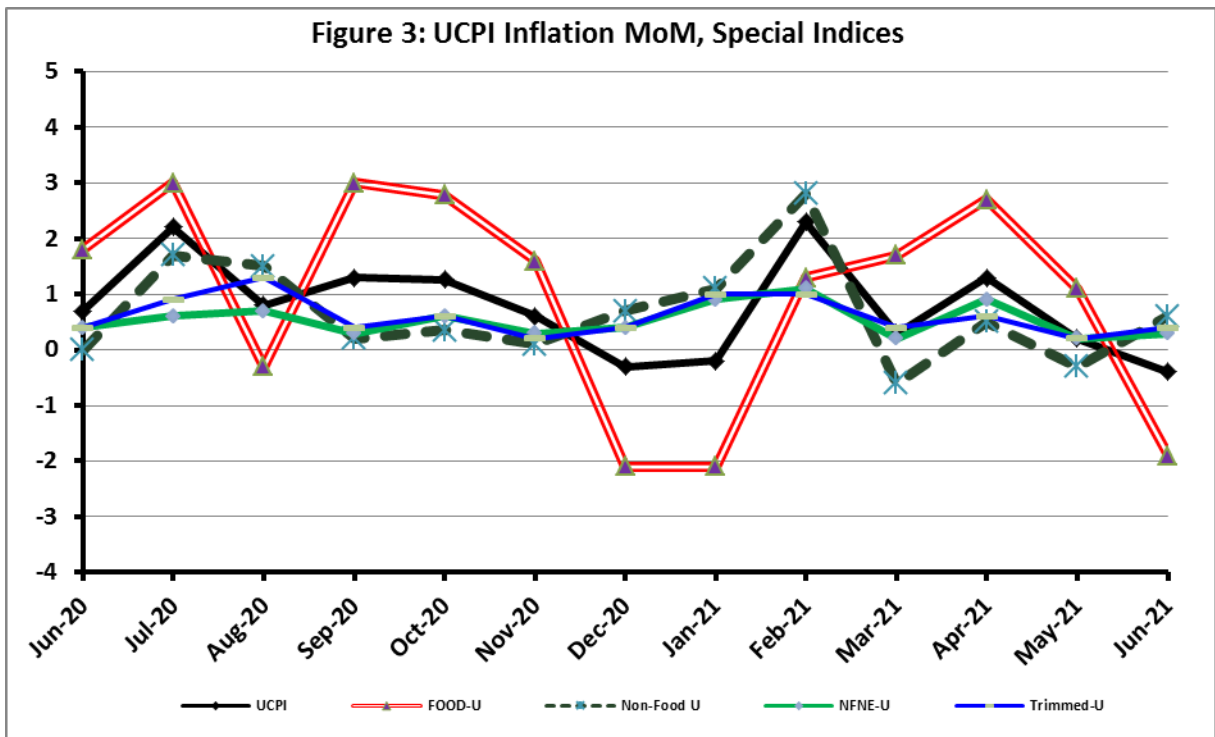
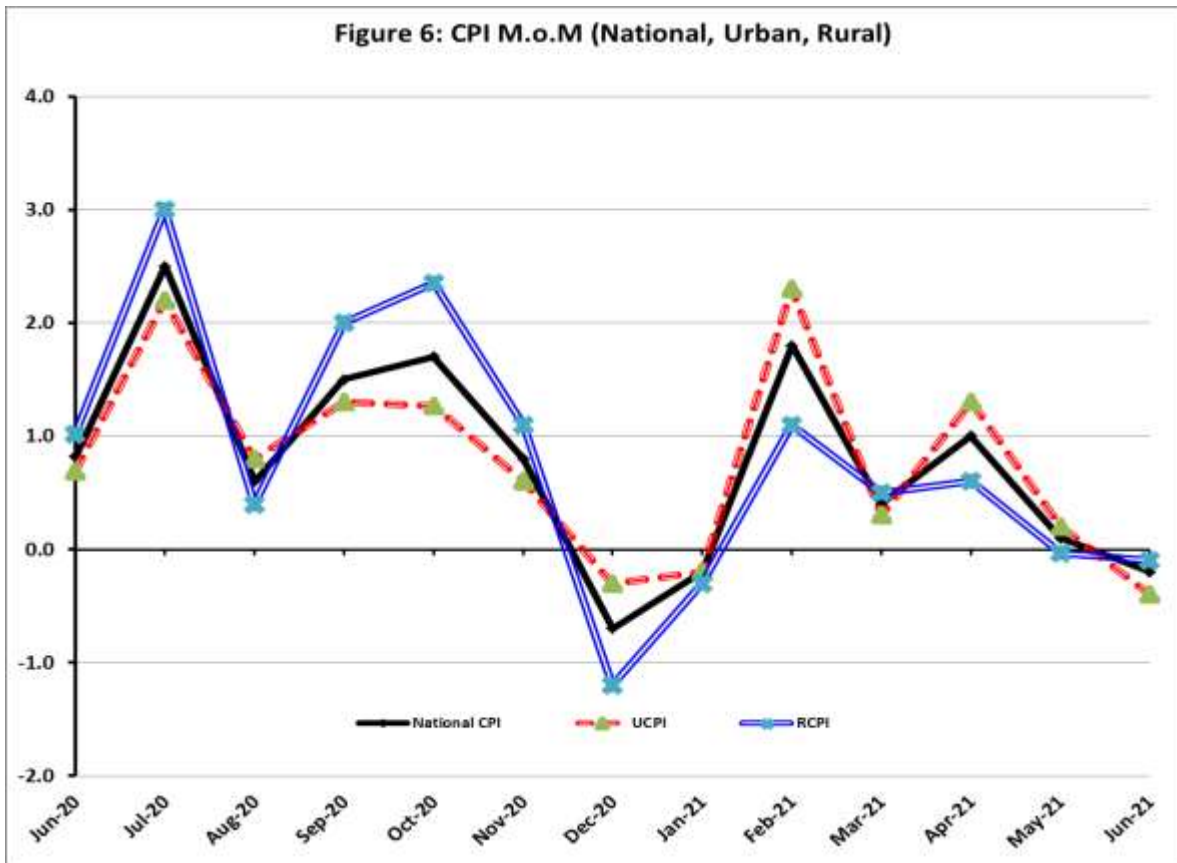
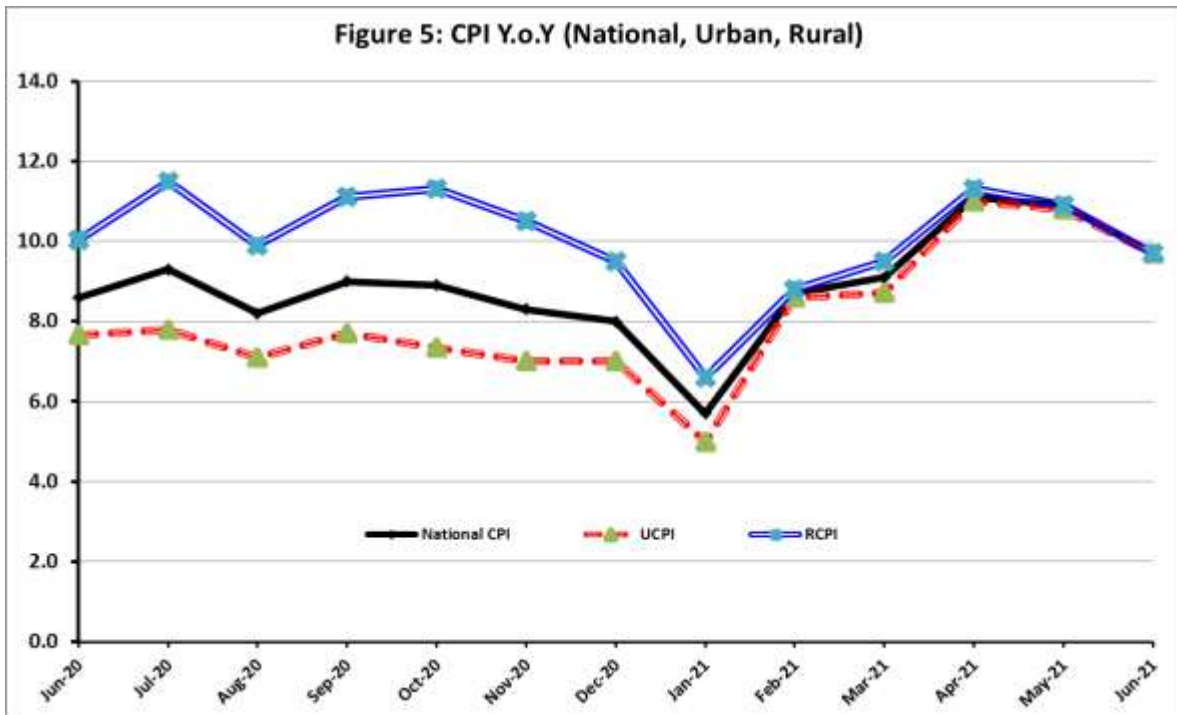


Figure 2: Rural Inflation - YoY, Special Indices







I. National Consumer Price Index (N-CPI)

The **National Consumer Price Index** for **June 2021** is **decreased** by **0.29%** over **May 2021** and increased by **9.65%** over corresponding month of the last year i.e. **June 2020**.

Table 1: Consumer Price Index (National) by Group of Commodities and Services (Base 2015-16)

| No | Group | Group Weight (%) | Indices | | | % Change June 2021 Over | | Impact (In % points) June 2021 Over | |
|-----|--|------------------|---------------|---------------|---------------|-------------------------|--------------|-------------------------------------|--------------|
| | | | June 2021 | May 2021 | June 2020 | May 2021 | June 2020 | May 2021 | June 2020 |
| | General | 100.00 | 144.82 | 145.24 | 132.08 | -0.29 | 9.65 | -0.29 | 9.65 |
| 1. | Food & Non-alcoholic Bev. | 34.58 | 149.04 | 151.72 | 134.90 | -1.77 | 10.48 | -0.64 | 3.70 |
| | <i>Non-perishable Food Items</i> | <i>29.60</i> | <i>152.29</i> | <i>154.90</i> | <i>134.89</i> | <i>-1.69</i> | <i>12.90</i> | <i>-0.53</i> | <i>3.90</i> |
| | <i>Perishable Food Items</i> | <i>4.99</i> | <i>129.75</i> | <i>132.81</i> | <i>134.98</i> | <i>-2.31</i> | <i>-3.88</i> | <i>-0.11</i> | <i>-0.20</i> |
| 2. | Alcoholic Bev. & Tobacco | 1.02 | 144.79 | 144.50 | 137.90 | 0.20 | 4.99 | 0.00 | 0.05 |
| 3. | Clothing & Footwear | 8.60 | 149.14 | 148.91 | 135.64 | 0.16 | 9.96 | 0.01 | 0.88 |
| 4. | Housing, Water, Electricity, Gas & Fuels | 23.63 | 140.11 | 139.49 | 128.43 | 0.45 | 9.10 | 0.10 | 2.09 |
| 5. | Furnishing & Household Equipment Maintenance | 4.10 | 141.97 | 141.13 | 129.33 | 0.59 | 9.77 | 0.02 | 0.39 |
| 6. | Health | 2.79 | 153.93 | 153.03 | 140.67 | 0.58 | 9.42 | 0.02 | 0.28 |
| 7. | Transport | 5.91 | 143.13 | 141.62 | 122.95 | 1.07 | 16.42 | 0.06 | 0.90 |
| 8. | Communication | 2.21 | 108.65 | 108.61 | 106.96 | 0.03 | 1.58 | 0.00 | 0.03 |
| 9. | Recreation & Culture | 1.59 | 127.35 | 125.67 | 119.96 | 1.34 | 6.15 | 0.02 | 0.09 |
| 10. | Education | 3.79 | 144.95 | 144.61 | 142.40 | 0.24 | 1.80 | 0.01 | 0.07 |
| 11. | Restaurants & Hotels | 6.92 | 143.36 | 142.37 | 131.81 | 0.69 | 8.76 | 0.05 | 0.61 |
| 12. | Miscellaneous | 4.87 | 153.50 | 151.85 | 138.30 | 1.09 | 10.99 | 0.06 | 0.56 |

II. Urban Consumer Price Index (UCPI)

The Urban Consumer Price Index of June 2021 is decreased by 0.44% over May 2021 and increased by 9.60% over corresponding month of the last year i.e. June 2020.

Table 2: Consumer Price Index (Urban) by Group of Commodities and Services (Base 2015-16)

| No | Group | Group Weight (%) | Indices | | | % Change June 2021 Over | | Impact (In % points) June 2021 Over | |
|-----|---|------------------|-----------|----------|-----------|-------------------------|-----------|-------------------------------------|-----------|
| | | | June 2021 | May 2021 | June 2020 | May 2021 | June 2020 | May 2021 | June 2020 |
| | General | 100.00 | 144.55 | 145.19 | 131.89 | -0.44 | 9.60 | -0.44 | 9.60 |
| 1. | Food & Non-alcoholic Bev. | 30.42 | 149.13 | 152.94 | 134.23 | -2.49 | 11.10 | -0.80 | 3.44 |
| | <i>Non-perishable Food Items</i> | 25.97 | 151.82 | 155.36 | 133.77 | -2.28 | 13.49 | -0.63 | 3.55 |
| | <i>Perishable Food Items</i> | 4.46 | 133.48 | 138.85 | 136.92 | -3.87 | -2.51 | -0.16 | -0.12 |
| 2. | Alcoholic Bev.& Tobacco | 0.85 | 153.94 | 153.81 | 145.10 | 0.08 | 6.09 | 0.00 | 0.06 |
| 3. | Clothing & Footwear | 8.01 | 146.45 | 146.36 | 132.50 | 0.06 | 10.53 | 0.00 | 0.85 |
| 4. | Housing, Water, Electricity, Gas & Fuels | 27.03 | 141.05 | 140.52 | 130.09 | 0.38 | 8.42 | 0.10 | 2.25 |
| 5. | Furnishing & Household Equip. & Maintenance | 4.09 | 140.90 | 140.17 | 129.35 | 0.52 | 8.93 | 0.02 | 0.36 |
| 6. | Health | 2.31 | 154.68 | 153.41 | 140.28 | 0.83 | 10.27 | 0.02 | 0.25 |
| 7. | Transport | 6.14 | 144.31 | 142.67 | 123.36 | 1.15 | 16.98 | 0.07 | 0.97 |
| 8. | Communication | 2.35 | 110.36 | 110.33 | 108.22 | 0.03 | 1.98 | 0.00 | 0.04 |
| 9. | Recreation & Culture | 1.73 | 124.35 | 122.15 | 118.29 | 1.80 | 5.12 | 0.03 | 0.08 |
| 10. | Education | 4.88 | 146.89 | 146.71 | 144.98 | 0.12 | 1.32 | 0.01 | 0.07 |
| 11. | Restaurants & Hotels | 7.41 | 142.77 | 141.66 | 130.52 | 0.78 | 9.39 | 0.06 | 0.69 |
| 12. | Miscellaneous | 4.77 | 153.41 | 151.81 | 138.14 | 1.05 | 11.05 | 0.05 | 0.55 |

Main contributors to month-on-month and year-on-year percentage changes are given below and detail is given in **Annexure-A**.

1. MONTH-ON-MONTH Top few commodities which varied from previous month are given below: -

FOOD

Increased: Tomatoes (28.94%), Onions (14.97%), Eggs (4.37%), Vegetables (3.11%), Meat (2.85%), Gur (1.85%), Wheat (1.52%), Vegetable ghee (1.36%), Pulse masoor (1.26%) and Mustard oil (1.21%)

Decreased: Chicken (36.86%), Fruits (20.07%), Pulse moong (6.10%), Fish (1.91%), Pulse gram (1.82%) and Pulse mash (1.24%).

NON-FOOD

Increased: Liquefied Hydrocarbons (26.26%), Personal Effects (2.47%), Motor fuel (1.13%), and Construction items (0.73%)

Decreased: Electricity Charges (0.57%).

YEAR-ON-YEAR: Top few commodities which varied from previous year i.e. June, 2020 are given below: -

FOOD

Increased: Eggs (32.88%), Mustard oil (32.34%), Vegetable ghee (23.75%), Condiments and Spices (23.27%), Cooking oil (21.93%), Sugar (21.54%), Tomatoes (19.67%), Wheat (18.99%), Meat (16.66%) and Milk (14.19%)

Decreased: Pulse moong (20.17%), Potatoes (16.42%), Fruits (12.75%), Onions (5.07%) and Pulse masoor (2.43%).

NON-FOOD

Increased: Motor fuel (36.82%), Liquefied Hydrocarbons (30.92%), Electricity charges (21.13%), Footwear (16.29%), Cleaning and laundering (13.36%), clinic fee (13.15%), Hosiery (12.6%) and Woollen garments (12.08%)

III. Rural Consumer Price Index (RCPI)

The Rural Consumer Price Index of June 2021 is decreased by 0.06% over May 2021 and increased by 9.73% over corresponding month of the last year i.e. June 2020.

Table 3: Consumer Price Index (Rural) by Group of Commodities and Services (Base 2015-16)

| No | Group | Group Weight (%) | Indices | | | % Change June 2021 Over | | Impact (In % points) June 2021 Over | |
|-----|---|------------------|---------------|---------------|---------------|-------------------------|--------------|-------------------------------------|--------------|
| | | | June 2021 | May 2021 | June 2020 | May 2021 | June 2020 | May 2021 | June 2020 |
| | General | 100.00 | 145.24 | 145.32 | 132.36 | -0.06 | 9.73 | -0.06 | 9.73 |
| 1. | Food & Non-alcoholic Bev. | 40.87 | 148.93 | 150.35 | 135.66 | -0.94 | 9.78 | -0.40 | 4.10 |
| | <i>Non-perishable Food Items</i> | <i>35.08</i> | <i>152.81</i> | <i>154.39</i> | <i>136.14</i> | <i>-1.02</i> | <i>12.24</i> | <i>-0.38</i> | <i>4.42</i> |
| | <i>Perishable Food Items</i> | <i>5.79</i> | <i>125.41</i> | <i>125.80</i> | <i>132.73</i> | <i>-0.31</i> | <i>-5.51</i> | <i>-0.02</i> | <i>-0.32</i> |
| 2. | Alcoholic Bev. & Tobacco | 1.28 | 135.56 | 135.11 | 130.65 | 0.33 | 3.76 | 0.00 | 0.05 |
| 3. | Clothing & Footwear | 9.48 | 152.58 | 152.15 | 139.64 | 0.28 | 9.27 | 0.03 | 0.93 |
| 4. | Housing, Water, Electricity, Gas & Fuels | 18.49 | 138.05 | 137.22 | 124.75 | 0.60 | 10.66 | 0.11 | 1.86 |
| 5. | Furnishing & Household Equip. & Maintenance | 4.10 | 143.57 | 142.57 | 129.30 | 0.70 | 11.04 | 0.03 | 0.44 |
| 6. | Health | 3.51 | 153.18 | 152.66 | 141.06 | 0.34 | 8.59 | 0.01 | 0.32 |
| 7. | Transport | 5.56 | 141.17 | 139.88 | 122.26 | 0.92 | 15.47 | 0.05 | 0.79 |
| 8. | Communication | 1.99 | 105.61 | 105.56 | 104.72 | 0.05 | 0.85 | 0.00 | 0.01 |
| 9. | Recreation & Culture | 1.38 | 133.03 | 132.34 | 123.14 | 0.52 | 8.03 | 0.01 | 0.10 |
| 10. | Education | 2.13 | 138.27 | 137.36 | 133.48 | 0.66 | 3.59 | 0.01 | 0.08 |
| 11. | Restaurants & Hotels | 6.19 | 144.42 | 143.66 | 134.15 | 0.53 | 7.66 | 0.03 | 0.48 |
| 12. | Miscellaneous | 5.02 | 153.63 | 151.91 | 138.54 | 1.13 | 10.89 | 0.06 | 0.57 |

Main contributors to Month-on-Month and Year-on-Year percentage changes are given below and detail is given in **Annexure-B**.

1. MONTH-ON-MONTH Top few commodities which varied from previous month are given below: -

FOOD

Increased: Tomatoes (26.76%), Vegetables (9.09%), Eggs (4.27%), Mustard oil (3.11%), Wheat (3.11%), Gur (2.49%), Milk (2.20%) and Cooking oil (1.23%).

Decreased: Chicken (32.50%), Fruits (12.58%), Pulse Moong (7.92%), Pulse Mash (2.12%), Potatoes (1.16%) and Sugar (0.93%).

NON-FOOD

Increased: Liquefied Hydrocarbons (13.53%), Personal Effects (2.66%), Furniture and Furnishing (2.22%), Motor Vehicles Accessories (1.47%), Hosiery (1.32%) and Motor Fuels (0.93%)

Decreased: Electricity Charges (0.57%)

2. YEAR-ON-YEAR: Top few commodities which varied from previous year i.e. June 2020 are given below: -

FOOD

Increased: Eggs (37.97%), Mustard oil (31.75%), Cooking oil (30.81%), Vegetable ghee (26.84%), Tomatoes (23.86%), Sugar (20.69%), Wheat (20.09%), Meat (16.2%), Butter (12.64%) and Rice (9.98%).

Decreased: Pulse Moong (25.23%), Potatoes (19.38%), Onions (12.73%), Fruits (11.77%), Pulse Masoor (2.59%) and Condiments and Spices (1.92%)

NON-FOOD

Increased: Motor Fuels (38.71%), Water Supply (36.99%), Liquefied Hydrocarbons (27.27%), Electricity Charges (21.13%), Hosiery (16.68%), Clinic Fee (16.25%), Plastic Products (13.32%) and Woolen Cloth (13.2%).

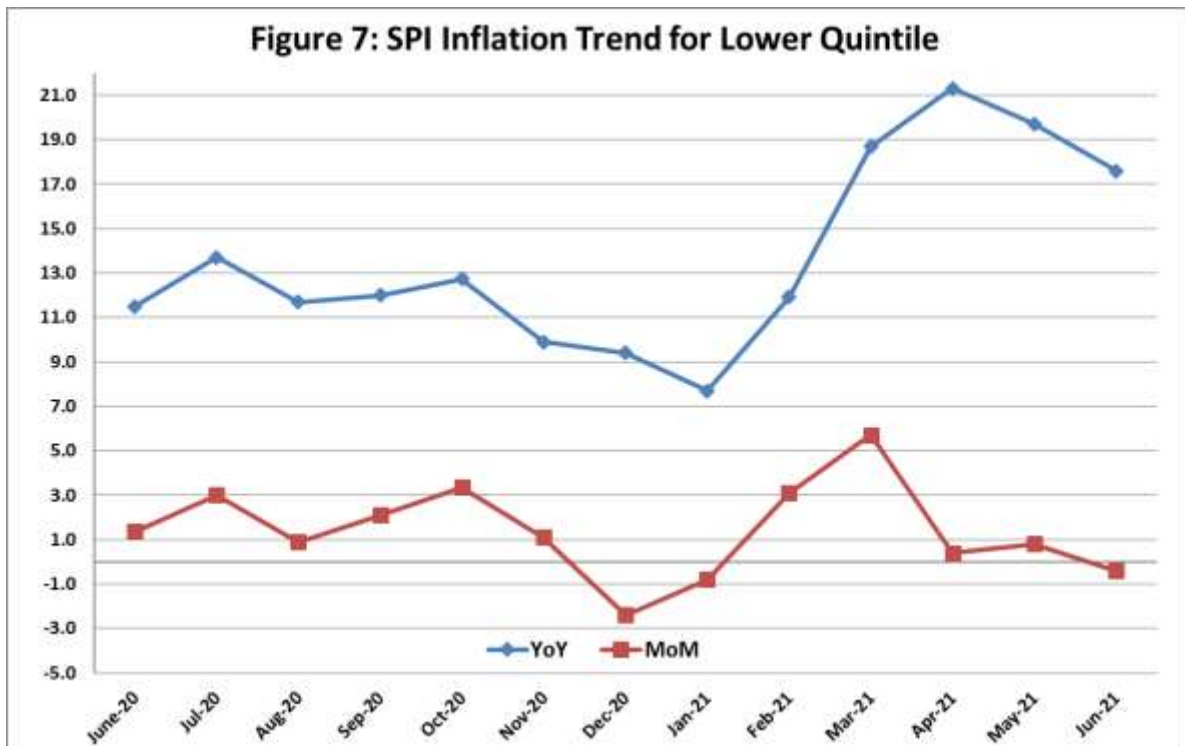
Decreased: Transport Services (2.81%)

IV. Sensitive Price Indicator

Quintile-wise percentage changes YoY and MoM are given below in Table 4. The series from June 2020 to June 2021 is also graphed below in Figure 7.

| Table 4: Sensitive Price Indicator (Base 2015-16) | | | | | |
|---|-----------|-----------|-----------|-------------------------|------------|
| Quintiles | Indices | | | % Change June 2021 Over | |
| | June 2021 | May, 2021 | June 2020 | May, 2021 | June, 2020 |
| 1 | 159.38 | 160.09 | 135.55 | -0.44 | 17.58 |
| 2 | 148.89 | 150.06 | 129.94 | -0.78 | 14.58 |
| 3 | 150.36 | 151.47 | 131.84 | -0.73 | 14.05 |
| 4 | 146.89 | 148.11 | 128.40 | -0.82 | 14.40 |
| 5 | 148.16 | 149.36 | 128.82 | -0.80 | 15.01 |
| Combined | 148.21 | 149.36 | 128.46 | -0.77 | 15.37 |

| Table 4.1 : Weekly Percentage Change of SPI During June - 2021 | | | | |
|--|-----------------------------|------------|------------|------------|
| Quintiles | % Change with Previous week | | | |
| | 03-06-2021 | 10-06-2021 | 17-06-2021 | 24-06-2021 |
| Quintile 1 | -0.47 | -0.26 | 0.18 | 0.67 |
| Combined | -0.61 | -0.59 | 0.28 | 0.82 |



V. Wholesale Price Index

The Wholesale Price Index for June, 2021 increased by **0.91%** over May, 2021. It increased by **20.85%** over the corresponding month of the last year. YoY and MoM movements, from June, 2020 to June, 2021 are also graphed below in Figure 8.

Table 5: Wholesale Price Index by Group of Commodities (Base 2015-16)

| No | Group | Group Weight (%) | Indices | | | % Change June 2021 Over | | Impact (In % points) June 2021 Over | |
|----|---|------------------|-----------|----------|-----------|-------------------------|-----------|-------------------------------------|-----------|
| | | | June 2021 | May 2021 | June 2020 | May 2021 | June 2020 | May 2021 | June 2020 |
| | General | 100.00 | 164.12 | 162.64 | 135.80 | 0.91 | 20.85 | 0.91 | 20.85 |
| 1 | Agriculture Forestry & Fishery | 25.77 | 167.14 | 166.79 | 137.92 | 0.21 | 21.19 | 0.06 | 5.54 |
| 2 | Ores/Minerals, Elec., Gas & Water | 12.01 | 167.12 | 165.94 | 160.96 | 0.71 | 3.83 | 0.09 | 0.54 |
| 3 | Food, Beverages, Tobacco, Textiles & Leather Products | 31.11 | 160.39 | 159.26 | 136.94 | 0.71 | 17.12 | 0.22 | 5.37 |
| | i. Food Products, Beverages & Tobacco | 20.07 | 156.23 | 154.57 | 134.55 | 1.07 | 16.11 | 0.20 | 3.20 |
| | ii. Textiles & Apparels | 10.33 | 171.30 | 171.11 | 142.82 | 0.11 | 19.94 | 0.01 | 2.17 |
| | iii. Leather Products | 0.71 | 119.35 | 119.35 | 118.88 | 0.00 | 0.40 | 0.00 | 0.00 |
| 4 | Other Transportable Goods | 22.40 | 165.33 | 162.47 | 118.26 | 1.76 | 39.80 | 0.39 | 7.76 |
| 5 | Metal Product, Machinery & Equipment | 8.72 | 161.24 | 158.28 | 135.83 | 1.87 | 18.71 | 0.16 | 1.63 |

Main contributors to month-on-month and year-on-year percentage changes are given below and detail is given in **Annexure-C**.

1. **MONTH-ON-MONTH** Top few commodities which varied from previous month are given below: -

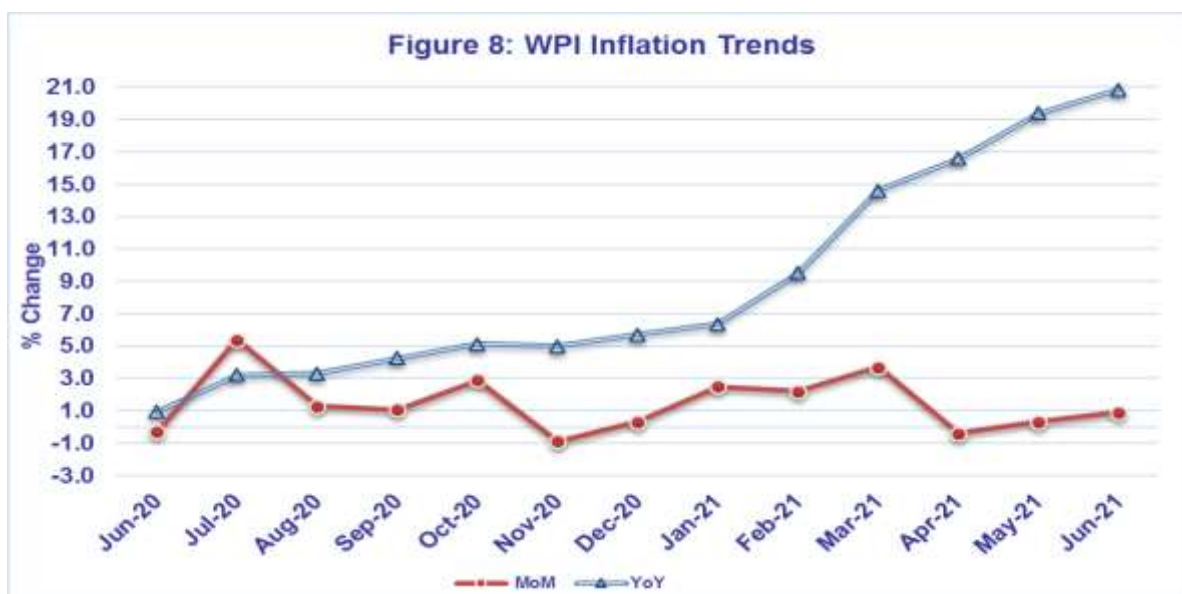
Increased: Vegetables (23.00%), Stimulant & Spice Crops (16.86%), Bajra (16.27%), Fibre Crops (8.26%), Steel Bar & Sheets (5.88%), Lighting Equipments (5.76%), Furnace Oil (3.97%), Meat (3.61%), Vegetable Ghee (2.36%), Fertilizers (2.04%) and Eggs (1.90%).

Decreased: Poultry (38.97%), Fruits (23.53%), Maize (7.03%), Potatoes (3.71%), Jowar (3.48%) and Pulses (2.57%).

2. **YEAR-ON-YEAR** Top few commodities which varied from previous year i.e. June, 2020 are given below: -

Increased: Kerosene Oil (127.65%), Bajra (98.63%), Furnace Oil (86.62%), Diesel (72.14%), Fibre Crops (61.82%), Spices (48.14%), Motor Spirit (46.05%), Timber (39.26%), Cotton Fabrics (37.39%), Eggs (32.83%), Vegetable Ghee (31.34%), Pesticides (28.49%), Cotton Yarn (23.46%), Sugar (22.15%), Towels (20.47%) and Fertilizers (19.52%).

Decreased: Potatoes (22.47%), Poultry (4.92%) and Glass sheets (1.11%).



Annexure A:CPI (Urban) Index Numbers by Commodity Groups & Commodities (2015-16=100)

| Item and Specification | Weight | Index Numbers | | | % Change in Jun 2021 over | | | |
|--------------------------------------|-----------------|---------------|---------------|---------------|---------------------------|-------------|---|--------------|
| | | Jun 21 | May 21 | Jun 20 | May 2021 | Jun 2020 | | |
| General | 100.0000 | 144.55 | 145.19 | 131.89 | - | 0.44 | + | 9.60 |
| Food and non-alcoholic Bevera | 30.4215 | 149.13 | 152.94 | 134.23 | - | 2.49 | + | 11.10 |
| 01 Wheat | 0.6120 | 154.29 | 151.98 | 129.67 | + | 1.52 | + | 18.99 |
| 02 Wheat flour | 3.0075 | 147.79 | 149.63 | 130.29 | - | 1.23 | + | 13.43 |
| 03 Wheat products | 0.0936 | 159.52 | 159.69 | 127.34 | - | 0.11 | + | 25.27 |
| 04 Besan | 0.0830 | 125.44 | 125.41 | 122.51 | + | 0.02 | + | 2.39 |
| 05 Rice | 1.1804 | 145.40 | 144.34 | 134.64 | + | 0.73 | + | 7.99 |
| 06 Bakery and confectionary | 0.4770 | 148.38 | 147.58 | 126.40 | + | 0.54 | + | 17.39 |
| 07 Nimco | 0.1224 | 144.39 | 142.81 | 125.99 | + | 1.11 | + | 14.60 |
| 08 Meat | 2.0411 | 172.38 | 167.61 | 147.76 | + | 2.85 | + | 16.66 |
| 09 Chicken | 1.3631 | 136.86 | 216.74 | 137.92 | - | 36.86 | - | 0.77 |
| 10 Fish | 0.3855 | 113.13 | 115.33 | 114.26 | - | 1.91 | - | 0.99 |
| 11 Milk fresh | 7.1070 | 141.24 | 140.61 | 123.69 | + | 0.45 | + | 14.19 |
| 12 Milk products | 0.6407 | 145.49 | 144.80 | 125.86 | + | 0.48 | + | 15.60 |
| 13 Milk powder | 0.3106 | 138.33 | 138.07 | 130.20 | + | 0.19 | + | 6.24 |
| 14 Eggs | 0.5083 | 176.33 | 168.95 | 132.70 | + | 4.37 | + | 32.88 |
| 15 Butter | 0.0932 | 193.95 | 193.07 | 170.23 | + | 0.46 | + | 13.93 |
| 16 Mustard oil | 0.0120 | 166.32 | 164.33 | 125.68 | + | 1.21 | + | 32.34 |
| 17 Cooking oil | 1.1016 | 176.58 | 174.63 | 144.82 | + | 1.12 | + | 21.93 |
| 18 Vegetable ghee | 1.0324 | 185.02 | 182.53 | 149.51 | + | 1.36 | + | 23.75 |
| 19 Dry fruits | 0.3299 | 137.03 | 139.93 | 130.03 | - | 2.07 | + | 5.38 |
| 20 Fresh fruits | 1.4363 | 140.99 | 176.39 | 161.59 | - | 20.07 | - | 12.75 |
| 21 Pulse masoor | 0.1624 | 107.65 | 106.31 | 110.33 | + | 1.26 | - | 2.43 |
| 22 Pulse moong | 0.1697 | 137.10 | 146.01 | 171.75 | - | 6.10 | - | 20.17 |
| 23 Pulse mash | 0.1152 | 111.06 | 112.46 | 104.68 | - | 1.24 | + | 6.09 |
| 24 Pulse gram | 0.1660 | 122.05 | 124.31 | 118.49 | - | 1.82 | + | 3.00 |
| 25 Gram whohe | 0.0912 | 130.59 | 129.71 | 128.54 | + | 0.68 | + | 1.59 |
| 26 Beans | 0.0408 | 159.90 | 159.79 | 144.13 | + | 0.07 | + | 10.94 |
| 27 Potatoes | 0.4496 | 192.90 | 191.01 | 230.80 | + | 0.99 | - | 16.42 |
| 28 Onions | 0.5928 | 79.58 | 69.22 | 83.83 | + | 14.97 | - | 5.07 |
| 29 Tomatoes | 0.3459 | 84.87 | 65.82 | 70.92 | + | 28.94 | + | 19.67 |
| 30 Fresh vegetables | 1.5306 | 129.22 | 125.32 | 115.88 | + | 3.11 | + | 11.51 |
| 31 Sugar | 1.1130 | 158.45 | 159.39 | 130.37 | - | 0.59 | + | 21.54 |
| 32 Gur | 0.0379 | 150.08 | 147.35 | 136.49 | + | 1.85 | + | 9.96 |
| 33 Honey | 0.1017 | 131.29 | 131.29 | 119.37 | + | 0.00 | + | 9.99 |
| 34 Sweetmeat | 0.3535 | 153.10 | 152.82 | 141.24 | + | 0.18 | + | 8.40 |
| 35 Ice cream | 0.1044 | 146.19 | 142.53 | 126.91 | + | 2.57 | + | 15.19 |
| 36 Condiments and Spices | 1.3340 | 216.29 | 210.85 | 175.46 | + | 2.58 | + | 23.27 |
| 37 Dessert preparation | 0.0419 | 133.10 | 131.78 | 125.08 | + | 1.00 | + | 6.41 |
| 38 Tea | 0.8427 | 140.84 | 140.84 | 140.74 | + | 0.00 | + | 0.07 |
| 39 Beverages | 0.8906 | 131.05 | 131.05 | 126.76 | + | 0.00 | + | 3.38 |
| Alcoholic Beverages, Tobacco | 0.8540 | 153.94 | 153.81 | 145.10 | + | 0.08 | + | 6.09 |
| 40 Cigarettes | 0.7167 | 141.09 | 141.09 | 135.18 | + | 0.00 | + | 4.37 |
| 41 Pan prepared | 0.1373 | 221.00 | 220.20 | 196.90 | + | 0.36 | + | 12.24 |
| Clothing and footwear | 8.0096 | 146.45 | 146.36 | 132.50 | + | 0.06 | + | 10.53 |
| 42 Cotton cloth | 2.2227 | 150.24 | 150.21 | 136.39 | + | 0.02 | + | 10.15 |
| 43 Woolen cloth | 0.8361 | 141.24 | 141.18 | 127.10 | + | 0.04 | + | 11.13 |
| 44 Readymade garments | 1.3196 | 139.10 | 138.92 | 130.22 | + | 0.13 | + | 6.82 |
| 45 Woolen readymade garments | 0.4307 | 142.21 | 142.21 | 126.88 | + | 0.00 | + | 12.08 |
| 46 Tailoring | 1.0741 | 150.72 | 150.71 | 140.63 | + | 0.01 | + | 7.17 |
| 47 Hosiry | 0.4070 | 144.29 | 143.63 | 128.14 | + | 0.46 | + | 12.60 |
| 48 Dopatta | 0.1713 | 129.93 | 129.91 | 124.49 | + | 0.02 | + | 4.37 |
| 49 Cleaning and laundrying | 0.0665 | 148.51 | 148.23 | 131.01 | + | 0.19 | + | 13.36 |
| 50 Footware | 1.4816 | 150.78 | 150.75 | 129.66 | + | 0.02 | + | 16.29 |
| Housing, water, Elec., Gas an | 27.0332 | 141.05 | 140.52 | 130.09 | + | 0.38 | + | 8.42 |
| 51 House rent | 19.2558 | 138.09 | 138.09 | 130.02 | + | 0.00 | + | 6.21 |
| 52 Construcion input items | 0.3765 | 154.30 | 153.18 | 143.08 | + | 0.73 | + | 7.84 |
| 53 Construction wage rates | 0.2025 | 156.06 | 155.01 | 149.20 | + | 0.68 | + | 4.60 |
| 54 Water supply | 0.5269 | 158.72 | 158.39 | 143.78 | + | 0.21 | + | 10.39 |
| 55 Garbage collection | 0.1064 | 173.90 | 173.90 | 159.37 | + | 0.00 | + | 9.12 |
| 56 Electricity charges | 4.5562 | 130.87 | 131.62 | 108.04 | - | 0.57 | + | 21.13 |

Annexure A:CPI (Urban) Index Numbers by Commodity Groups & Commodities (2015-16=100)

| Item and Specification | Weight | Index Numbers | | | % Change in Jun 2021 over | |
|--------------------------------------|---------------|---------------|---------------|---------------|---------------------------|----------------|
| | | Jun 21 | May 21 | Jun 20 | May 2021 | Jun 2020 |
| 57 Gas charges | 1.0807 | 216.94 | 216.94 | 216.94 | + 0.00 | + 0.00 |
| 58 Liquified Hydrocarbons | 0.5064 | 158.81 | 125.78 | 121.30 | + 26.26 | + 30.92 |
| 59 Solid Fuel | 0.4218 | 120.79 | 120.56 | 114.44 | + 0.19 | + 5.55 |
| Furnishing and household equi | 4.0937 | 140.90 | 140.17 | 129.35 | + 0.52 | + 8.93 |
| 60 Furniture and furnishing | 0.4750 | 141.76 | 141.22 | 130.08 | + 0.38 | + 8.98 |
| 61 Carpets | 0.0308 | 113.24 | 113.24 | 111.18 | + 0.00 | + 1.85 |
| 62 Household textiles | 0.3420 | 135.27 | 135.27 | 125.85 | + 0.00 | + 7.49 |
| 63 Household equipments | 1.0032 | 142.73 | 141.72 | 129.09 | + 0.71 | + 10.57 |
| 64 Plastic products | 0.0536 | 122.71 | 122.61 | 116.93 | + 0.08 | + 4.94 |
| 65 Major tools & equipments | 0.0084 | 138.62 | 138.51 | 121.25 | + 0.08 | + 14.33 |
| 66 Washing soap/detergents/match | 1.4112 | 144.87 | 144.18 | 130.05 | + 0.48 | + 11.40 |
| 67 Household servant | 0.7695 | 135.61 | 134.66 | 131.21 | + 0.71 | + 3.35 |
| Health | 2.3098 | 154.68 | 153.41 | 140.28 | + 0.83 | + 10.27 |
| 68 Drugs and medicines | 1.0735 | 154.58 | 154.25 | 139.60 | + 0.21 | + 10.73 |
| 69 Therapeutic Appliances and Eq | 0.0054 | 116.64 | 116.60 | 111.06 | + 0.03 | + 5.02 |
| 70 Doctor (MBBS) clinic fee | 0.4044 | 192.11 | 190.81 | 169.79 | + 0.68 | + 13.15 |
| 71 Dental services | 0.0156 | 128.98 | 128.73 | 118.61 | + 0.19 | + 8.74 |
| 72 Medical tests | 0.2367 | 134.39 | 134.08 | 126.01 | + 0.23 | + 6.65 |
| 73 Hospitals services | 0.5742 | 137.93 | 134.49 | 127.51 | + 2.56 | + 8.17 |
| Transport | 6.1368 | 144.31 | 142.67 | 123.36 | + 1.15 | + 16.98 |
| 74 Motor vehicles | 0.8097 | 154.49 | 154.41 | 147.46 | + 0.05 | + 4.77 |
| 75 Motor vehicle accessories | 0.1941 | 141.95 | 141.66 | 130.68 | + 0.20 | + 8.62 |
| 76 Motor fuel | 2.9088 | 152.12 | 150.42 | 111.18 | + 1.13 | + 36.82 |
| 77 Mechanical services | 0.4290 | 137.66 | 137.66 | 130.87 | + 0.00 | + 5.19 |
| 78 Motor vehicle tax | 0.0482 | 126.72 | 126.72 | 126.72 | + 0.00 | + 0.00 |
| 79 Transport services | 1.7470 | 128.98 | 126.12 | 129.73 | + 2.27 | - 0.58 |
| Communication | 2.3536 | 110.36 | 110.33 | 108.22 | + 0.03 | + 1.98 |
| 80 Postal services | 0.0190 | 162.27 | 162.27 | 147.05 | + 0.00 | + 10.35 |
| 81 Communication apparatus | 0.4524 | 119.65 | 119.49 | 118.74 | + 0.13 | + 0.77 |
| 82 Communication Services | 1.8822 | 107.61 | 107.61 | 105.30 | + 0.00 | + 2.19 |
| Recreation and culture | 1.7301 | 124.35 | 122.15 | 118.29 | + 1.80 | + 5.12 |
| 83 Recreation and culture | 0.6478 | 113.96 | 113.75 | 110.70 | + 0.18 | + 2.94 |
| 84 Text books | 0.6655 | 126.34 | 121.19 | 117.25 | + 4.25 | + 7.75 |
| 85 Newspapers | 0.0716 | 151.55 | 151.55 | 151.55 | + 0.00 | + 0.00 |
| 86 stationery | 0.3452 | 134.40 | 133.70 | 127.66 | + 0.52 | + 5.28 |
| Education | 4.8807 | 146.89 | 146.71 | 144.98 | + 0.12 | + 1.32 |
| 87 Education | 4.8807 | 146.89 | 146.71 | 144.98 | + 0.12 | + 1.32 |
| Restaurants and hotels | 7.4050 | 142.77 | 141.66 | 130.52 | + 0.78 | + 9.39 |
| 88 Readymade food | 5.5235 | 144.99 | 143.50 | 130.02 | + 1.04 | + 11.51 |
| 89 Marriage Hall Charges | 1.7514 | 137.97 | 137.97 | 133.41 | + 0.00 | + 3.42 |
| 90 Accommodation Services | 0.1301 | 113.30 | 113.20 | 112.40 | + 0.09 | + 0.80 |
| Misc. goods and services | 4.7720 | 153.41 | 151.81 | 138.14 | + 1.05 | + 11.05 |
| 91 Personal Grooming Services | 0.8001 | 138.39 | 138.14 | 127.59 | + 0.18 | + 8.46 |
| 92 Electrical Appliances for Per | 0.0465 | 118.50 | 118.48 | 116.88 | + 0.02 | + 1.39 |
| 93 Appliances/Articles/Products | 2.9807 | 143.49 | 142.85 | 128.06 | + 0.45 | + 12.05 |
| 94 Personal Effects n.e.c. | 0.9447 | 199.16 | 193.32 | 179.94 | + 3.02 | + 10.68 |

Annexure B:CPI (Rural) Index Numbers by Commodity Groups & Commodities (2015-16=100)

| Item and Specification | Weight | Index Numbers | | | % Change in Jun 2021 over | | | |
|-------------------------------------|-----------------|---------------|---------------|---------------|---------------------------|-------------|---|--------------|
| | | Jun 21 | May 21 | Jun 20 | May 2021 | Jun 2020 | | |
| General | 100.0000 | 145.24 | 145.32 | 132.36 | - | 0.06 | + | 9.73 |
| Food and non-alcoholic | 40.8668 | 148.93 | 150.35 | 135.66 | - | 0.94 | + | 9.78 |
| Beverages | | | | | | | | |
| 01 Wheat | 3.4736 | 152.34 | 147.75 | 126.86 | + | 3.11 | + | 20.09 |
| 02 Wheat Flour | 3.4297 | 149.22 | 148.79 | 130.39 | + | 0.29 | + | 14.44 |
| 03 Wheat Products | 0.1068 | 149.27 | 148.35 | 126.01 | + | 0.62 | + | 18.46 |
| 04 Besan | 0.0728 | 127.90 | 127.99 | 127.27 | - | 0.07 | + | 0.50 |
| 05 Rice | 1.5501 | 185.83 | 186.09 | 168.97 | - | 0.14 | + | 9.98 |
| 06 Bakery and Confectionary | 0.3702 | 146.42 | 143.64 | 127.25 | + | 1.94 | + | 15.06 |
| 07 Nimco | 0.0774 | 131.46 | 131.13 | 118.30 | + | 0.25 | + | 11.12 |
| 08 Meat | 1.7146 | 171.48 | 170.06 | 147.57 | + | 0.83 | + | 16.20 |
| 09 Chicken | 1.4641 | 151.64 | 224.65 | 145.51 | - | 32.50 | + | 4.21 |
| 10 Fish | 0.2640 | 125.95 | 125.47 | 121.39 | + | 0.38 | + | 3.76 |
| 11 Milk fresh | 10.3803 | 136.34 | 133.40 | 124.62 | + | 2.20 | + | 9.40 |
| 12 Milk products | 0.9624 | 134.27 | 132.31 | 124.21 | + | 1.48 | + | 8.10 |
| 13 Milk powder | 0.1062 | 128.91 | 128.28 | 124.19 | + | 0.49 | + | 3.80 |
| 14 Eggs | 0.5665 | 171.54 | 164.52 | 124.33 | + | 4.27 | + | 37.97 |
| 15 Butter | 0.3333 | 146.71 | 145.69 | 130.25 | + | 0.70 | + | 12.64 |
| 16 Mustard oil | 0.0136 | 170.52 | 165.37 | 129.43 | + | 3.11 | + | 31.75 |
| 17 Cooking oil | 0.6011 | 197.13 | 194.74 | 150.70 | + | 1.23 | + | 30.81 |
| 18 Vegetable ghee | 2.3764 | 200.82 | 199.78 | 158.32 | + | 0.52 | + | 26.84 |
| 19 Dry fruits | 0.2496 | 155.38 | 155.92 | 140.73 | - | 0.35 | + | 10.41 |
| 20 Fresh fruits | 1.4505 | 146.90 | 168.04 | 166.49 | - | 12.58 | - | 11.77 |
| 21 Pulse Masoor | 0.2076 | 112.79 | 112.10 | 115.79 | + | 0.62 | - | 2.59 |
| 22 Pulse Moong | 0.2510 | 142.47 | 154.72 | 190.55 | - | 7.92 | - | 25.23 |
| 23 Pulse Mash | 0.1465 | 109.23 | 111.60 | 108.83 | - | 2.12 | + | 0.37 |
| 24 Pulse Gram | 0.2751 | 125.40 | 125.90 | 122.97 | - | 0.40 | + | 1.98 |
| 25 Gram Whole | 0.1116 | 127.20 | 126.66 | 122.76 | + | 0.43 | + | 3.62 |
| 26 Beans | 0.0896 | 169.60 | 168.39 | 163.12 | + | 0.72 | + | 3.97 |
| 27 Potatoes | 0.7437 | 204.78 | 207.18 | 254.02 | - | 1.16 | - | 19.38 |
| 28 Onions | 0.8965 | 63.88 | 64.40 | 73.20 | - | 0.81 | - | 12.73 |
| 29 Tomatoes | 0.5069 | 73.09 | 57.66 | 59.01 | + | 26.76 | + | 23.86 |
| 30 Fresh Vegetables | 2.0947 | 115.01 | 105.43 | 105.34 | + | 9.09 | + | 9.18 |
| 31 Sugar | 2.0296 | 158.21 | 159.69 | 131.09 | - | 0.93 | + | 20.69 |
| 32 Gur | 0.1522 | 150.47 | 146.81 | 140.39 | + | 2.49 | + | 7.18 |
| 33 Honey | 0.0296 | 135.70 | 135.70 | 122.76 | + | 0.00 | + | 10.54 |
| 34 Sweetmeat | 0.3967 | 139.43 | 138.89 | 127.49 | + | 0.39 | + | 9.37 |
| 35 Ice Cream | 0.0568 | 141.98 | 140.13 | 126.78 | + | 1.32 | + | 11.99 |
| 36 Condiments and Spices | 1.4919 | 185.91 | 187.17 | 189.54 | - | 0.67 | - | 1.92 |
| 37 Dessert Preparation | 0.0133 | 132.10 | 132.10 | 120.27 | + | 0.00 | + | 9.84 |
| 38 Tea | 1.2566 | 138.10 | 138.10 | 137.87 | + | 0.00 | + | 0.17 |
| 39 Beverages | 0.5537 | 133.03 | 132.90 | 126.88 | + | 0.10 | + | 4.85 |
| Alcoholic Beverages, Tobacco | 1.2786 | 135.56 | 135.11 | 130.65 | + | 0.33 | + | 3.76 |
| 40 Cigarettes | 1.2364 | 134.17 | 133.73 | 129.74 | + | 0.33 | + | 3.41 |
| 41 Pan Prepared | 0.0422 | 176.12 | 175.70 | 157.44 | + | 0.24 | + | 11.86 |
| Clothing and footwear | 9.4826 | 152.58 | 152.15 | 139.64 | + | 0.28 | + | 9.27 |
| 42 Cotton Cloth | 2.8381 | 168.50 | 168.18 | 153.55 | + | 0.19 | + | 9.74 |
| 43 Woolen Cloth | 1.0959 | 144.06 | 143.17 | 127.26 | + | 0.62 | + | 13.20 |
| 44 Readymade Garments | 1.1345 | 143.17 | 143.13 | 133.73 | + | 0.03 | + | 7.06 |
| 45 Woolen Readymade Garments | 0.5401 | 143.31 | 143.31 | 130.27 | + | 0.00 | + | 10.01 |
| 46 Tailoring | 1.2999 | 150.81 | 150.56 | 137.50 | + | 0.17 | + | 9.68 |
| 47 Hosiery | 0.4322 | 184.51 | 182.11 | 158.14 | + | 1.32 | + | 16.68 |
| 48 Dopatta | 0.2078 | 141.73 | 139.40 | 132.13 | + | 1.67 | + | 7.27 |
| 49 Cleaning and Laundering | 0.0176 | 141.72 | 141.72 | 131.39 | + | 0.00 | + | 7.86 |
| 50 Footwear | 1.9165 | 137.31 | 137.18 | 130.44 | + | 0.09 | + | 5.27 |
| Housing, water, Elec., Gas | 18.4853 | 138.05 | 137.22 | 124.75 | + | 0.60 | + | 10.66 |
| 51 House Rent | 8.6110 | 138.56 | 138.56 | 130.00 | + | 0.00 | + | 6.58 |
| 52 Construction Input Items | 0.6306 | 130.82 | 129.70 | 119.11 | + | 0.86 | + | 9.83 |
| 53 Construction Wage Rates | 0.2526 | 158.49 | 156.63 | 150.13 | + | 1.19 | + | 5.57 |
| 54 Water Supply | 0.0645 | 216.56 | 216.56 | 158.09 | + | 0.00 | + | 36.99 |
| 55 Garbage Collection | 0.0080 | 150.24 | 150.24 | 138.15 | + | 0.00 | + | 8.75 |
| 56 Electricity Charges | 3.4431 | 130.87 | 131.62 | 108.04 | - | 0.57 | + | 21.13 |
| 57 Liquified Hydrocarbons | 0.9994 | 138.09 | 121.63 | 108.50 | + | 13.53 | + | 27.27 |

Annexure B:CPI (Rural) Index Numbers by Commodity Groups & Commodities (2015-16=100)

| Item and Specification | Weight | Index Numbers | | | % Change in Jun 2021 over | |
|---|---------------|---------------|---------------|---------------|---------------------------|----------------|
| | | Jun 21 | May 21 | Jun 20 | May 2021 | Jun 2020 |
| 58 Solid Fuel | 4.4761 | 141.32 | 141.24 | 130.01 | + 0.06 | + 8.70 |
| Furnishing and household equipment | 4.1031 | 143.57 | 142.57 | 129.30 | + 0.70 | + 11.04 |
| 59 Furniture and Furnishing | 0.5786 | 145.44 | 142.28 | 132.34 | + 2.22 | + 9.90 |
| 60 Household Textiles | 0.4382 | 133.69 | 133.67 | 127.72 | + 0.01 | + 4.67 |
| 61 Household Equipments | 1.2774 | 151.50 | 150.52 | 134.26 | + 0.65 | + 12.84 |
| 62 Plastic Products | 0.0776 | 157.32 | 156.93 | 138.83 | + 0.25 | + 13.32 |
| 63 Major Tools and Equipments | 0.0324 | 129.61 | 127.16 | 116.01 | + 1.93 | + 11.72 |
| 64 Washing Soaps, Detergents etc. | 1.6989 | 139.15 | 138.63 | 124.76 | + 0.38 | + 11.53 |
| Health | 3.5141 | 153.18 | 152.66 | 141.06 | + 0.34 | + 8.59 |
| 65 Drugs and Medicines | 1.5792 | 154.69 | 153.89 | 142.48 | + 0.52 | + 8.57 |
| 66 Doctor Clinic Fee | 0.5128 | 187.58 | 187.44 | 161.36 | + 0.07 | + 16.25 |
| 67 Dental Services | 0.0181 | 132.61 | 132.61 | 122.97 | + 0.00 | + 7.84 |
| 68 Medical Tests | 0.3967 | 154.62 | 153.97 | 143.22 | + 0.42 | + 7.96 |
| 69 Hospitals Services | 1.0073 | 133.08 | 132.88 | 127.98 | + 0.15 | + 3.98 |
| Transport | 5.5580 | 141.17 | 139.88 | 122.26 | + 0.92 | + 15.47 |
| 70 Motor Vehicles | 0.7305 | 134.34 | 134.28 | 127.15 | + 0.04 | + 5.65 |
| 71 Motor Vehicles Accessories | 0.1572 | 142.46 | 140.39 | 135.58 | + 1.47 | + 5.07 |
| 72 Motor Fuels | 2.4932 | 149.77 | 148.39 | 107.97 | + 0.93 | + 38.71 |
| 73 Mechanical Services | 0.3645 | 156.82 | 156.82 | 153.45 | + 0.00 | + 2.20 |
| 74 Motor Vehicle Tax | 0.0174 | 127.98 | 127.98 | 127.98 | + 0.00 | + 0.00 |
| 75 Transport Services | 1.7952 | 128.84 | 126.97 | 132.56 | + 1.47 | - 2.81 |
| Communication | 1.9940 | 105.61 | 105.56 | 104.72 | + 0.05 | + 0.85 |
| 76 Postal Services | 0.0070 | 149.43 | 149.43 | 149.43 | + 0.00 | + 0.00 |
| 77 Communication Apparatus | 0.3362 | 120.85 | 120.50 | 118.95 | + 0.29 | + 1.60 |
| 78 Communication Services | 1.6508 | 102.33 | 102.33 | 101.63 | + 0.00 | + 0.69 |
| Recreation and culture | 1.3764 | 133.03 | 132.34 | 123.14 | + 0.52 | + 8.03 |
| 79 Recreation and Culture | 0.4763 | 136.03 | 134.87 | 128.43 | + 0.86 | + 5.92 |
| 80 Text Books | 0.5047 | 119.13 | 119.06 | 110.23 | + 0.06 | + 8.07 |
| 81 Newspapers | 0.0230 | 165.56 | 165.56 | 161.68 | + 0.00 | + 2.40 |
| 82 Stationery | 0.3724 | 146.02 | 145.04 | 131.49 | + 0.68 | + 11.05 |
| Education | 2.1342 | 138.27 | 137.36 | 133.48 | + 0.66 | + 3.59 |
| 83 Education | 2.1342 | 138.27 | 137.36 | 133.48 | + 0.66 | + 3.59 |
| Restaurants and hotels | 6.1895 | 144.42 | 143.66 | 134.15 | + 0.53 | + 7.66 |
| 84 Readymade Food | 3.8001 | 155.84 | 154.61 | 139.60 | + 0.80 | + 11.63 |
| 85 Marriage Hall Charges | 2.2525 | 127.75 | 127.75 | 126.93 | + 0.00 | + 0.65 |
| 86 Accommodation Services | 0.1369 | 101.62 | 101.62 | 101.59 | + 0.00 | + 0.03 |
| Misc. goods and services | 5.0174 | 153.63 | 151.91 | 138.54 | + 1.13 | + 10.89 |
| 87 Personal Grooming Services | 1.5363 | 157.76 | 157.32 | 138.27 | + 0.28 | + 14.10 |
| 88 Appliances/Articles/Products | 2.2746 | 133.18 | 132.25 | 121.52 | + 0.70 | + 9.60 |
| 89 Personal Effects n.e.c. | 1.2065 | 186.94 | 182.09 | 170.98 | + 2.66 | + 9.33 |

Annexure C: Wholesale Price Indices by Major Groups & Commodities (2015-16=100)

| Item and Specification | Weight | Index Numbers | | | % Change in Jun 2021 over | |
|---|-----------------|---------------|---------------|---------------|---------------------------|----------------|
| | | Jun 21 | May 21 | Jun 20 | May 2021 | Jun 2020 |
| General | 100.0000 | 164.12 | 162.64 | 135.80 | + 0.91 | + 20.85 |
| Agriculture Forestry & Fishery | 25.7674 | 167.14 | 166.79 | 137.92 | + 0.21 | + 21.19 |
| 001 Wheat | 0.6297 | 152.99 | 151.25 | 129.96 | + 1.15 | + 17.72 |
| 002 Maize | 0.6764 | 156.43 | 168.25 | 144.29 | - 7.03 | + 8.41 |
| 003 Rice | 2.4413 | 176.20 | 173.62 | 152.64 | + 1.49 | + 15.44 |
| 004 Sorghum / Jowar | 0.0214 | 206.04 | 213.46 | 198.03 | - 3.48 | + 4.04 |
| 005 Millet / Bajra | 0.0374 | 241.50 | 207.70 | 121.58 | + 16.27 | + <u>98.63</u> |
| 006 Vegetables | 1.2441 | 137.30 | 111.63 | 120.64 | + 23.00 | + 13.81 |
| 007 Fresh Fruits | 1.5144 | 166.00 | 217.08 | 155.31 | - 23.53 | + 6.88 |
| 008 Dry Fruits | 0.2478 | 138.67 | 138.89 | 130.41 | - 0.16 | + 6.33 |
| 009 Cotton Seeds | 1.1511 | 141.53 | 141.41 | 134.28 | + 0.08 | + 5.40 |
| 010 Other Oil Seeds | 0.0722 | 161.92 | 159.83 | 135.62 | + 1.31 | + 19.39 |
| 011 Edible Roots / Potatoes | 0.2540 | 221.47 | 230.01 | 285.65 | - 3.71 | - 22.47 |
| 012 Stimulant & Spice Crops | 0.1634 | 335.44 | 287.04 | 275.99 | + 16.86 | + 21.54 |
| 013 Pulses | 0.4901 | 129.03 | 132.43 | 126.13 | - 2.57 | + 2.30 |
| 014 Sugar Crops | 1.0725 | 139.03 | 139.03 | 122.32 | + 0.00 | + 13.66 |
| 015 Fibre Crops | 5.3169 | 235.39 | 217.43 | 145.46 | + 8.26 | + <u>61.82</u> |
| 016 Unmanufactured Tobacco | 0.0742 | 237.60 | 237.54 | 189.62 | + 0.03 | + 25.30 |
| 017 Poultry | 0.5633 | 131.93 | 216.18 | 138.75 | - 38.97 | - 4.92 |
| 018 Raw Milk from Bovine Animals | 7.0279 | 139.47 | 139.47 | 124.74 | + 0.00 | + 11.81 |
| 019 Eggs | 0.5034 | 172.90 | 169.68 | 130.17 | + 1.90 | + 32.83 |
| 020 Raw Animal Materials / Wool | 0.0351 | 107.08 | 107.00 | 105.33 | + 0.07 | + 1.66 |
| 021 Hides, Skins & Fur Skins, Raw | 0.4834 | 34.04 | 34.06 | 38.90 | - 0.06 | - 12.49 |
| 022 Fuel Wood in Logs | 0.0179 | 127.94 | 127.84 | 115.92 | + 0.08 | + 10.37 |
| 023 Fish Live Fresh or Chilled | 1.7295 | 158.03 | 158.03 | 155.00 | + 0.00 | + 1.95 |
| Ores/Minerals, Elec., Gas | 12.0069 | 167.12 | 165.94 | 160.96 | + 0.71 | + 3.83 |
| 024 Coal not Agglomerated | 0.7508 | 75.79 | 75.79 | 75.79 | + 0.00 | + 0.00 |
| 025 Natural Gas Liquefied | 5.7065 | 203.39 | 201.67 | 195.39 | + 0.85 | + 4.09 |
| 026 Salt & Pure Sodium Chloride | 0.0584 | 169.23 | 169.23 | 161.99 | + 0.00 | + 4.47 |
| 027 Electrical Energy | 5.4912 | 141.90 | 141.10 | 136.82 | + 0.57 | + 3.71 |
| Food, Beverages, Tobacco, Textile | 31.1122 | 160.39 | 159.26 | 136.94 | + 0.71 | + 17.12 |
| Food Products, Beverages & Tobacco | 20.0718 | 156.23 | 154.57 | 134.55 | + 1.07 | + 16.11 |
| 028 Meat of Animals | 3.4559 | 178.38 | 172.16 | 149.89 | + 3.61 | + 19.01 |
| 029 Vegetables & Fruit Juice | 0.0058 | 122.54 | 122.54 | 111.80 | + 0.00 | + 9.61 |
| 030 Dried Fruits & Nuts | 0.1733 | 177.62 | 177.62 | 159.45 | + 0.00 | + 11.40 |
| 031 Fruit Juices | 0.3880 | 131.77 | 131.57 | 123.07 | + 0.15 | + 7.07 |
| 032 Vegetable Oils Refined | 1.9242 | 161.25 | 157.67 | 123.92 | + 2.27 | + 30.12 |
| 033 Vegetable Ghee | 1.5632 | 192.24 | 187.81 | 146.37 | + 2.36 | + 31.34 |
| 034 Oil Cakes | 0.9611 | 160.73 | 168.14 | 140.91 | - 4.41 | + 14.07 |
| 035 Processed Liquid Milk | 4.4437 | 143.51 | 143.51 | 134.52 | + 0.00 | + 6.68 |
| 036 Milk & Cream in Solid Form | 0.0316 | 135.48 | 135.47 | 128.30 | + 0.01 | + 5.60 |
| 037 Ice Cream | 0.0047 | 144.03 | 138.52 | 117.05 | + 3.98 | + 23.05 |
| 038 Dairy Products N.E.C | 0.0117 | 138.30 | 138.29 | 133.91 | + 0.01 | + 3.28 |
| 039 Wheat Flour | 2.3034 | 152.12 | 150.38 | 130.82 | + 1.16 | + 16.28 |
| 040 Other Cereal Flour | 0.0604 | 126.48 | 128.14 | 120.30 | - 1.30 | + 5.14 |
| 041 Sugar Refined | 1.7975 | 158.98 | 158.41 | 130.15 | + 0.36 | + 22.15 |
| 042 Chocolate | 0.0139 | 89.03 | 89.03 | 81.57 | + 0.00 | + 9.15 |
| 043 Sugar Confectionary | 0.0738 | 187.48 | 187.48 | 115.50 | + 0.00 | + <u>62.32</u> |
| 044 Coffee & Tea | 0.7303 | 129.90 | 129.90 | 127.76 | + 0.00 | + 1.68 |
| 045 Spices | 0.1449 | 342.00 | 341.64 | 230.86 | + 0.11 | + 48.14 |
| 046 Other Food Products | 0.0336 | 119.30 | 119.30 | 112.54 | + 0.00 | + 6.01 |
| 047 Mineral Water | 0.0207 | 125.24 | 125.24 | 122.92 | + 0.00 | + 1.89 |
| 048 Beverages | 0.6303 | 129.94 | 129.87 | 125.81 | + 0.05 | + 3.28 |
| 049 Tobacco Products | 1.2998 | 104.23 | 104.23 | 104.23 | + 0.00 | + 0.00 |
| Textiles & Apparels | 10.3289 | 171.30 | 171.11 | 142.82 | + 0.11 | + 19.94 |
| 050 Cotton Yarn | 5.2491 | 203.51 | 203.51 | 164.84 | + 0.00 | + 23.46 |
| 051 Nylon Yarn | 0.1719 | 95.24 | 95.24 | 95.24 | + 0.00 | + 0.00 |
| 052 Blended Yarn | 0.1689 | 129.30 | 129.30 | 120.22 | + 0.00 | + 7.55 |
| 053 Woven Fabrics | 0.0128 | 152.49 | 152.49 | 135.54 | + 0.00 | + 12.51 |
| 054 Cotton Fabrics | 0.6343 | 162.88 | 162.88 | 118.55 | + 0.00 | + 37.39 |
| 055 Other Fabrics | 1.1016 | 120.49 | 120.07 | 113.21 | + 0.35 | + 6.43 |

Annexure C: Wholesale Price Indices by Major Groups & Commodities (2015-16=100)

| Item and Specification | Weight | Index Numbers | | | % Change in Jun 2021 over | |
|--|----------------|---------------|---------------|---------------|---------------------------|----------------|
| | | Jun 21 | May 21 | Jun 20 | May 2021 | Jun 2020 |
| 056 Silk & Reyon Fabrics | 0.7350 | 156.63 | 155.57 | 119.19 | + 0.68 | + 31.41 |
| 057 Towels | 0.1235 | 141.44 | 141.44 | 117.41 | + 0.00 | + 20.47 |
| 058 Blankets | 0.0029 | 104.95 | 104.95 | 96.44 | + 0.00 | + 8.82 |
| 059 Bed Sheets | 0.0913 | 123.12 | 123.12 | 112.64 | + 0.00 | + 9.30 |
| 060 Quilts | 0.0019 | 117.24 | 117.24 | 109.35 | + 0.00 | + 7.22 |
| 061 Woolen Carpets | 0.0383 | 137.01 | 137.01 | 137.01 | + 0.00 | + 0.00 |
| 062 Synthetic Carpets | 0.0566 | 116.51 | 116.51 | 115.72 | + 0.00 | + 0.68 |
| 063 Hosiery Products | 0.8832 | 137.20 | 136.87 | 122.11 | + 0.24 | + 12.36 |
| 064 Readymade Garments | 1.0576 | 139.51 | 139.13 | 131.52 | + 0.27 | + 6.08 |
| Leather Products | 0.7115 | 119.35 | 119.35 | 118.88 | + 0.00 | + 0.40 |
| 065 Leather Without Hair | 0.2973 | 108.77 | 108.77 | 108.00 | + 0.00 | + 0.71 |
| 066 Other Leather N.E.C | 0.2567 | 111.77 | 111.77 | 111.77 | + 0.00 | + 0.00 |
| 067 Footwears | 0.1575 | 151.69 | 151.69 | 151.00 | + 0.00 | + 0.46 |
| Other Transportable Goods | 22.3979 | 165.33 | 162.47 | 118.26 | + 1.76 | + 39.80 |
| 068 Timber | 0.0165 | 155.92 | 153.60 | 111.96 | + 1.51 | + 39.26 |
| 069 Printing Paper | 0.4279 | 130.70 | 130.70 | 130.70 | + 0.00 | + 0.00 |
| 070 Hard Board | 0.1579 | 146.50 | 146.50 | 146.50 | + 0.00 | + 0.00 |
| 071 Motor Spirit | 1.6268 | 150.93 | 149.37 | 103.34 | + 1.04 | + 46.05 |
| 072 Diesel Oil | 5.4849 | 155.15 | 153.45 | 90.13 | + 1.11 | + <u>72.14</u> |
| 073 Kerosine Oil | 0.2151 | 158.76 | 156.89 | 69.74 | + 1.19 | + <u>127.6</u> |
| 074 Furnace Oil | 3.2664 | 301.00 | 289.52 | 161.29 | + 3.97 | + <u>86.62</u> |
| 075 Mobil Oil | 0.7114 | 129.75 | 128.53 | 122.25 | + 0.95 | + 6.13 |
| 076 Chemicals | 1.7720 | 148.37 | 145.66 | 129.81 | + 1.86 | + 14.30 |
| 077 Dyeing Material | 0.1539 | 146.16 | 146.16 | 146.16 | + 0.00 | + 0.00 |
| 078 Fertilizers | 2.8657 | 112.60 | 110.35 | 94.21 | + 2.04 | + 19.52 |
| 079 Pesticides | 0.2763 | 142.51 | 142.51 | 110.91 | + 0.00 | + 28.49 |
| 080 Insecticides | 0.1276 | 111.49 | 111.49 | 111.49 | + 0.00 | + 0.00 |
| 081 Paints & Varnishes | 0.1916 | 137.36 | 136.88 | 124.38 | + 0.35 | + 10.44 |
| 082 Medicines | 1.1428 | 150.06 | 149.96 | 145.57 | + 0.07 | + 3.08 |
| 083 Soaps & Detergents | 0.8168 | 116.71 | 116.69 | 111.69 | + 0.02 | + 4.49 |
| 084 Auto Tyres | 0.2703 | 126.22 | 126.22 | 121.56 | + 0.00 | + 3.83 |
| 085 Plastic Products | 0.4550 | 119.12 | 119.12 | 115.52 | + 0.00 | + 3.12 |
| 086 Glass sheets | 0.2089 | 147.64 | 147.64 | 149.29 | + 0.00 | - 1.11 |
| 087 Other Glass Articles | 0.1635 | 150.08 | 150.08 | 132.52 | + 0.00 | + 13.25 |
| 088 Ceramics & Sanitary Fixture | 0.0244 | 126.79 | 126.79 | 123.86 | + 0.00 | + 2.37 |
| 089 Bricks, Blocks & Tiles | 0.1566 | 134.65 | 134.53 | 118.77 | + 0.09 | + 13.37 |
| 090 Cement | 1.8145 | 128.49 | 127.53 | 114.99 | + 0.75 | + 11.74 |
| 091 Bed Foam | 0.0006 | 157.23 | 156.92 | 145.73 | + 0.20 | + 7.89 |
| 092 Matches | 0.0505 | 1173.3 | 1173.3 | 1171.7 | + 0.00 | + 0.13 |
| Metal Product, Machinery & Eq | 8.7156 | 161.24 | 158.28 | 135.83 | + 1.87 | + 18.71 |
| 093 Steel Bar & Sheets | 1.4615 | 194.42 | 183.62 | 163.73 | + 5.88 | + 18.74 |
| 094 Pipe Fittings | 0.0780 | 169.43 | 169.43 | 141.32 | + 0.00 | + 19.89 |
| 095 Steel Products | 0.3879 | 134.30 | 134.30 | 133.35 | + 0.00 | + 0.71 |
| 096 Engines & Motors | 0.0046 | 107.29 | 107.29 | 107.29 | + 0.00 | + 0.00 |
| 097 Vacuum Pumps | 0.0155 | 107.56 | 107.56 | 107.56 | + 0.00 | + 0.00 |
| 098 Air Conditioners | 0.0049 | 127.25 | 126.48 | 112.46 | + 0.61 | + 13.15 |
| 099 Cultivators | 0.0551 | 103.75 | 103.75 | 103.75 | + 0.00 | + 0.00 |
| 100 Chuff Cutter | 0.1293 | 121.43 | 121.43 | 110.00 | + 0.00 | + 10.39 |
| 101 Tractors | 0.0028 | 129.36 | 129.36 | 121.30 | + 0.00 | + 6.64 |
| 102 Lathe Machines | 0.0525 | 217.68 | 217.68 | 203.64 | + 0.00 | + 6.89 |
| 103 Concrete Mixture | 0.0107 | 100.00 | 100.00 | 100.00 | + 0.00 | + 0.00 |
| 104 Fridge, Washing, Sewing Machines, Fans, Iron | 1.1645 | 161.48 | 161.46 | 148.98 | + 0.01 | + 8.39 |
| 105 Electric Wires | 0.0912 | 144.65 | 144.65 | 125.73 | + 0.00 | + 15.05 |
| 106 Lighting Equipments | 1.4431 | 126.37 | 119.49 | 116.71 | + 5.76 | + 8.28 |
| 107 Radio & Television | 0.1843 | 106.58 | 106.16 | 100.59 | + 0.40 | + 5.95 |
| 108 Motor Vehicles | 0.0244 | 158.44 | 158.44 | 156.45 | + 0.00 | + 1.27 |
| 109 Motorcycles | 0.2570 | 132.17 | 131.95 | 122.49 | + 0.17 | + 7.90 |
| 110 Bicycles | 3.3483 | 172.55 | 172.55 | 131.36 | + 0.00 | + 31.36 |