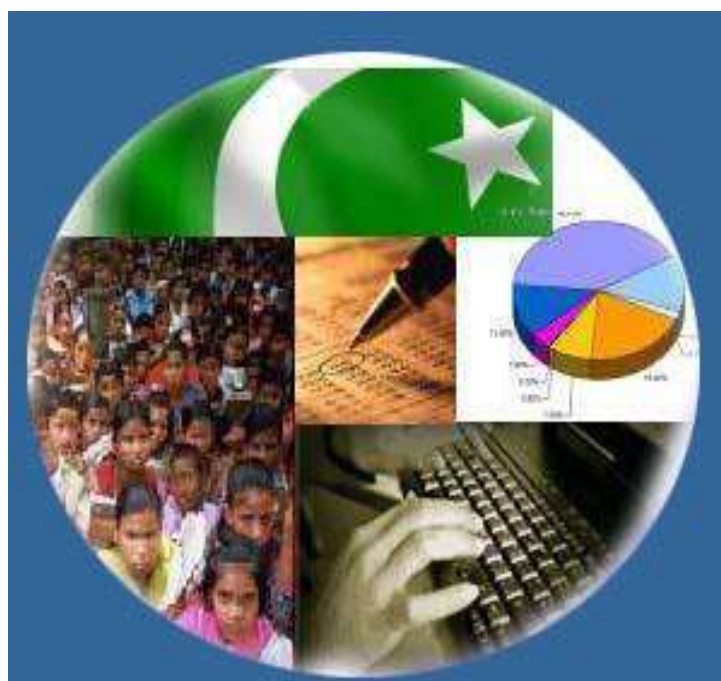




# Monthly Review on Price Indices



**July, 2021**  
**(Base Year 2015-16)**

**Government of Pakistan**  
**Ministry of Planning, Development & Special Initiatives**  
**Pakistan Bureau of Statistics**  
**Islamabad**



## Inflation in Brief

- CPI inflation General**, increased by 8.4% on year-on-year basis in July 2021 as compared to an increase of 9.7% in the previous month and 9.3% in July 2020. On month-on-month basis, it increased by 1.3% in July 2021 as compared to a decrease of 0.2% in the previous month and an increase of 2.5% in July 2020.
- CPI inflation Urban**, increased by 8.7% on year-on-year basis in July 2021 as compared to an increase of 9.7% in the previous month and 7.8% in July 2020. On month-on-month basis, it increased by 1.29% in July 2021 as compared to a decrease of 0.4% in the previous month and an increase of 2.2% in July 2020.
- CPI inflation Rural**, increased by 8.0% on year-on-year basis in July 2021 as compared to an increase of 9.7% in the previous month and 11.6% in July 2020. On month-on-month basis, it increased by 1.4% in July 2021 as compared to a decrease of 0.06% in the previous month and an increase of 3.0% in July 2020.
- SPI inflation** on YoY increased by 16.2% in July 2021 as compared to an increase of 17.6% a month earlier and an increase of 13.7% in July 2020. On MoM basis, it increased by 1.8% in July 2021 as compared to a decrease of 0.4% a month earlier and an increase of 3.0% in July 2020.
- WPI inflation** on YoY basis increased by 17.3% in July 2021 as compared to an increase of 20.9% a month earlier and an increase of 3.2% in July 2020. WPI inflation on MoM basis increased by 2.3% in July 2021 as compared to an increase of 0.9% a month earlier and an increase of 5.4% in corresponding month i.e. July 2020.
- Figures 1 and 2 show graphically the yearly data of Table 1.a for Urban and Rural CPI while Table 1.1 shows "Period Average" and "YoY" percent changes in indices of three years.

Table 1.a General Inflation (%) (Base 2015-16)																		
PERIOD	CPI														SPI**		WPI	
	General						Food				Non-Food							
	National		Urban		Rural		Urban		Rural		Urban		Rural		YoY	MoM	YoY	MoM
	YoY	MoM	YoY	MoM	YoY	MoM	YoY	MoM	YoY	MoM	YoY	MoM	YoY	MoM				
Sep-19	11.4	0.8	11.6	0.7	11.1	0.8	15.0	2.0	15.0	1.8	9.7	0.0	8.0	0.0	14.7	1.9	15.9	0.1
Oct-19	11.0	1.8	10.9	1.6	11.3	2.2	13.7	1.4	14.6	2.6	9.3	1.7	8.7	1.8	15.1	2.7	13.3	2.0
Nov-19	12.7	1.3	12.1	1.0	13.6	1.9	16.6	2.4	19.3	3.4	9.6	0.2	9.0	0.6	20.2	3.7	11.2	-0.8
Dec-19	12.6	-0.3	12.0	-0.4	13.6	-0.3	16.7	-1.7	19.7	-1.1	9.5	0.4	8.8	0.4	18.1	-2.0	12.4	-0.3
Jan-20	14.6	2.0	13.4	1.7	16.3	2.4	19.5	2.7	23.8	3.4	10.2	1.1	10.5	1.5	18.3	0.5	15.4	1.8
Feb-20	12.4	-1.0	11.2	-1.1	14.2	-1.0	15.2	-1.4	19.7	-1.6	9.1	-0.9	9.8	-0.4	14.5	-0.8	12.7	-0.7
Mar-20	10.2	0.0	9.3	0.1	11.7	-0.1	13.0	0.6	15.5	-0.3	7.3	-0.1	8.5	0.1	11.8	-0.3	9.3	-0.9
Apr-20	8.5	-0.8	7.7	-0.7	9.8	-1.1	10.4	-1.0	12.9	-1.7	6.2	-0.5	7.4	-0.5	9.3	-1.8	4.9	-2.0
May-20	8.2	0.3	7.3	0.3	9.7	0.3	10.6	1.5	13.7	1.4	5.4	-0.4	6.4	-0.5	11.0	2.2	1.5	-2.1
Jun-20	8.6	0.8	7.6	0.7	10.0	1.0	12.9	1.8	15.2	2.0	4.7	0.0	5.8	0.1	11.5	1.4	0.9	-0.3
<b>July-20</b>	<b>9.3</b>	<b>2.5</b>	<b>7.8</b>	<b>2.2</b>	<b>11.6</b>	<b>3.0</b>	<b>15.1</b>	<b>3.0</b>	<b>17.8</b>	<b>4.0</b>	<b>3.9</b>	<b>1.7</b>	<b>6.5</b>	<b>2.2</b>	<b>13.7</b>	<b>3.0</b>	<b>3.2</b>	<b>5.4</b>
Aug-20	8.2	0.6	7.1	0.8	9.9	0.4	11.3	-0.3	13.5	-0.9	4.8	1.5	6.8	1.5	11.7	0.9	3.3	1.3
Sep-20	9.0	1.5	7.7	1.3	11.1	2.0	12.4	3.0	15.8	3.8	5.0	0.2	7.2	0.3	12.0	2.1	4.3	1.0
Oct-20	8.9	1.7	7.3	1.3	11.3	2.4	13.9	2.8	17.7	4.3	3.6	0.3	5.8	0.5	12.3	3.0	5.1	2.9
Nov-20	8.3	0.8	7.0	0.6	10.5	1.1	13.0	1.6	16.1	2.0	3.4	0.1	5.5	0.2	9.9	1.1	5.0	-0.9
Dec-20	8.0	-0.7	7.0	-0.3	9.5	-1.2	12.6	-2.1	13.4	-3.4	3.8	0.7	6.1	1.0	9.1	-2.7	5.7	0.3
Jan-21	5.7	-0.2	5.0	-0.2	6.6	-0.3	7.3	-2.1	7.2	-2.2	3.7	1.1	6.1	1.5	7.7	-0.8	6.4	2.5
Feb-21	8.7	1.8	8.6	2.3	8.8	1.1	10.3	1.3	9.1	0.2	7.6	2.8	8.6	2.0	11.9	3.1	9.5	2.2
Mar-21	9.1	0.4	8.7	0.3	9.5	0.5	11.5	1.7	11.1	1.5	7.1	-0.6	8.1	-0.4	18.7	5.7	14.6	3.7
Apr-21	11.1	1.0	11.0	1.3	11.3	0.6	15.7	2.7	14.1	0.9	8.2	0.5	8.9	0.3	21.3	0.4	16.6	-0.4
May-21	10.9	0.1	10.8	0.2	10.9	-0.03	15.3	1.1	12.8	0.2	8.3	-0.3	9.2	-0.3	19.7	0.8	19.4	0.3
<b>Jun-21</b>	<b>9.7</b>	<b>-0.2</b>	<b>9.7</b>	<b>-0.4</b>	<b>9.7</b>	<b>-0.06</b>	<b>11.0</b>	<b>-1.9</b>	<b>9.8</b>	<b>-0.8</b>	<b>8.9</b>	<b>0.6</b>	<b>9.7</b>	<b>0.6</b>	<b>17.6</b>	<b>-0.4</b>	<b>20.9</b>	<b>0.9</b>
<b>Jul-21</b>	<b>8.4</b>	<b>1.3</b>	<b>8.7</b>	<b>1.29</b>	<b>8.0</b>	<b>1.4</b>	<b>9.4</b>	<b>1.5</b>	<b>7.3</b>	<b>1.6</b>	<b>8.2</b>	<b>1.1</b>	<b>8.7</b>	<b>1.2</b>	<b>16.2</b>	<b>1.8</b>	<b>17.3</b>	<b>2.3</b>

\*\* SPI for quintile 1. Digits 0.0\* are due to rounding off.

**Core inflation (NFNE)**

7. Measured by **non-food non-energy Urban** increased by 6.9% on (YoY) basis in July, 2021 as compared to an increase of 6.7% in the previous month and 5.3% in July, 2020. On (MoM) basis, it increased by 0.8% in July, 2021 as compared to increase of 0.3% in previous month, and an increase of 0.6% in corresponding month of last year i.e. July, 2020.
8. Measured by **non-food non-energy Rural** increased by 6.9% on (YoY) basis in July, 2021 as compared to an increase of 7.3% in the previous month and 7.8% in July, 2020. On (MoM) basis, it increased by 0.7% in July, 2021 as compared to an increase of 0.4% in previous month, and an increase of 1.1% in corresponding month of last year i.e. July, 2020.

**Core inflation (Trimmed)**

9. Measured by 20% **weighted trimmed mean Urban** increased by 9.0% on (YoY) basis in July, 2021 as compared to 9.4% in the previous month and 6.7% in July, 2020. On (MoM) basis, it increased by 0.8% in July, 2021 as compared to an increase of 0.4% in the previous month and an increase of 0.9% in corresponding month of last year i.e. July, 2020.
10. Measured by 20% **weighted trimmed mean Rural** increased by 8.4% on (YoY) basis in July, 2021 as compared to 9.8% in the previous month and by 9.8% in July, 2020. On (MoM) basis, it increased by 0.8% in July, 2021 as compared to an increase of 0.6% in the previous month and an increase of 1.5% in corresponding month of last year i.e. July, 2020.

**Table 1.b Core Inflation (%) (Base 2015-16)**

Period	NFNE				Trimmed			
	Urban		Rural		Urban		Rural	
	YoY	MoM	YoY	MoM	YoY	MoM	YoY	MoM
<b>Jul-20</b>	<b>5.3</b>	<b>0.6</b>	<b>7.8</b>	<b>1.1</b>	<b>6.7</b>	<b>0.9</b>	<b>9.8</b>	<b>1.5</b>
Aug-20	5.6	0.7	7.6	0.8	7.0	1.3	9.3	1.0
Sep-20	5.5	0.3	7.8	0.4	7.1	0.4	10.0	0.9
Oct-20	5.6	0.6	7.6	0.6	6.5	0.6	9.5	1.1
Nov-20	5.6	0.3	7.4	0.3	6.3	0.2	9.1	0.4
Dec-20	5.6	0.4	7.7	0.5	6.2	0.4	8.8	0.6
Jan-21	5.4	0.9	7.8	1.1	5.7	1.0	8.1	1.2
Feb-21	6.4	1.1	7.7	0.5	7.9	1.0	9.2	0.5
Mar-21	6.3	0.2	7.3	0.3	8.1	0.4	9.4	0.3
Apr-21	7.0	0.9	7.7	0.7	9.8	0.6	10.6	0.2
May-21	6.8	0.2	7.6	0.3	10.0	0.2	10.3	0.4
<b>June-21</b>	<b>6.7</b>	<b>0.3</b>	<b>7.3</b>	<b>0.4</b>	<b>9.4</b>	<b>0.4</b>	<b>9.8</b>	<b>0.6</b>
<b>July-21</b>	<b>6.9</b>	<b>0.8</b>	<b>6.9</b>	<b>0.7</b>	<b>9.0</b>	<b>0.8</b>	<b>8.4</b>	<b>0.8</b>

Figure 1: Urban Inflation - YoY, Special Indices

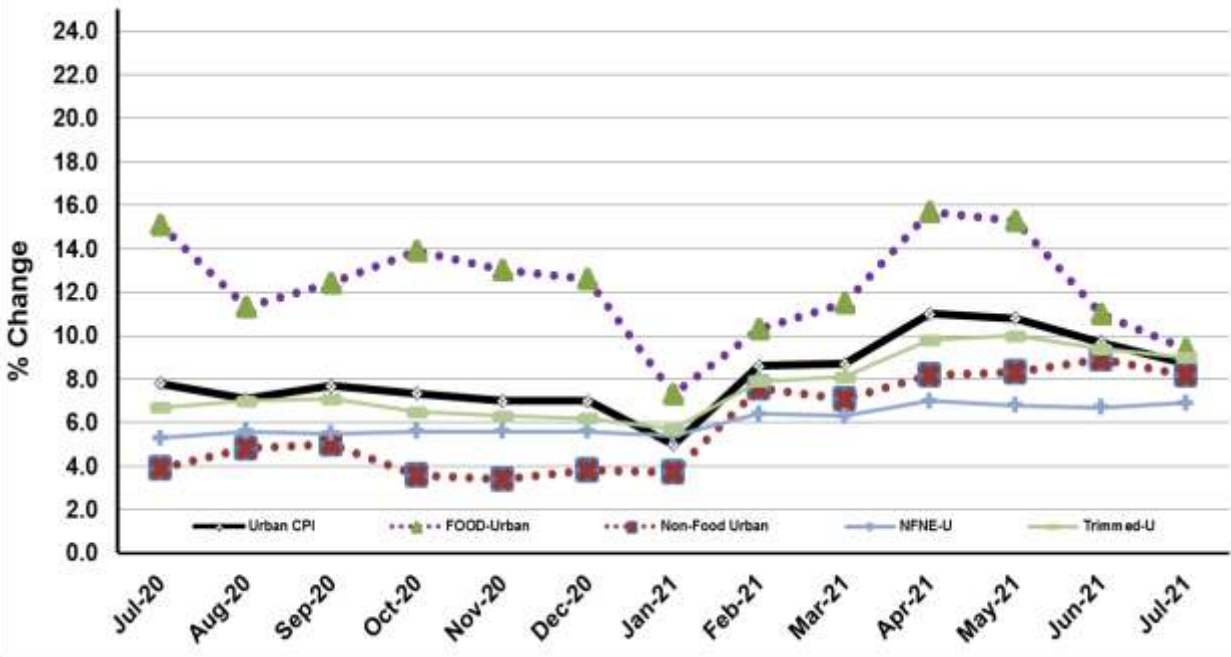


Figure 2: Rural Inflation - YoY, Special Indices

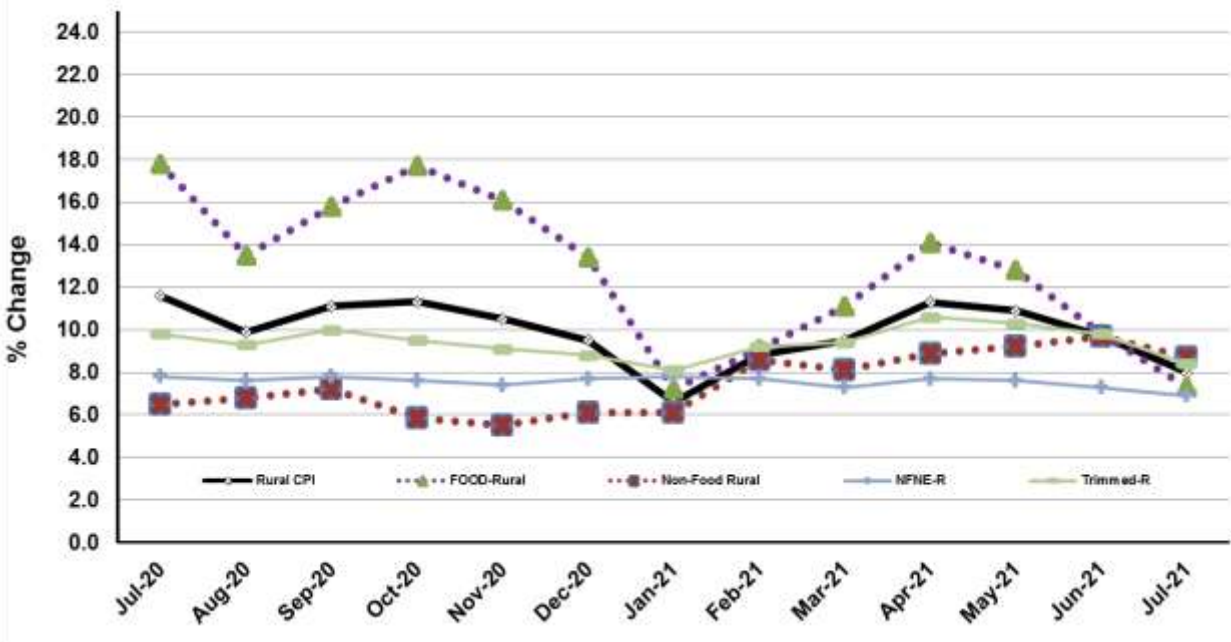


Figure 3: UCPI Inflation MoM, Special Indices

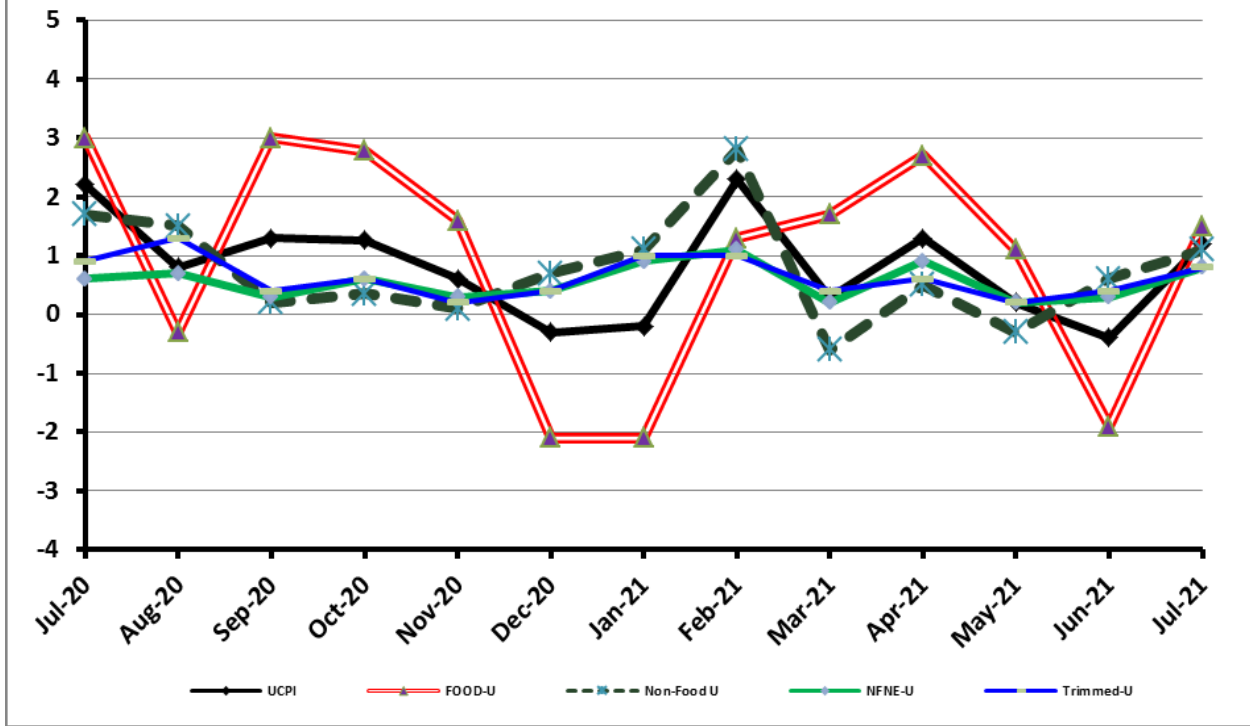


Figure 4: RPI Inflation MoM, Special Indices

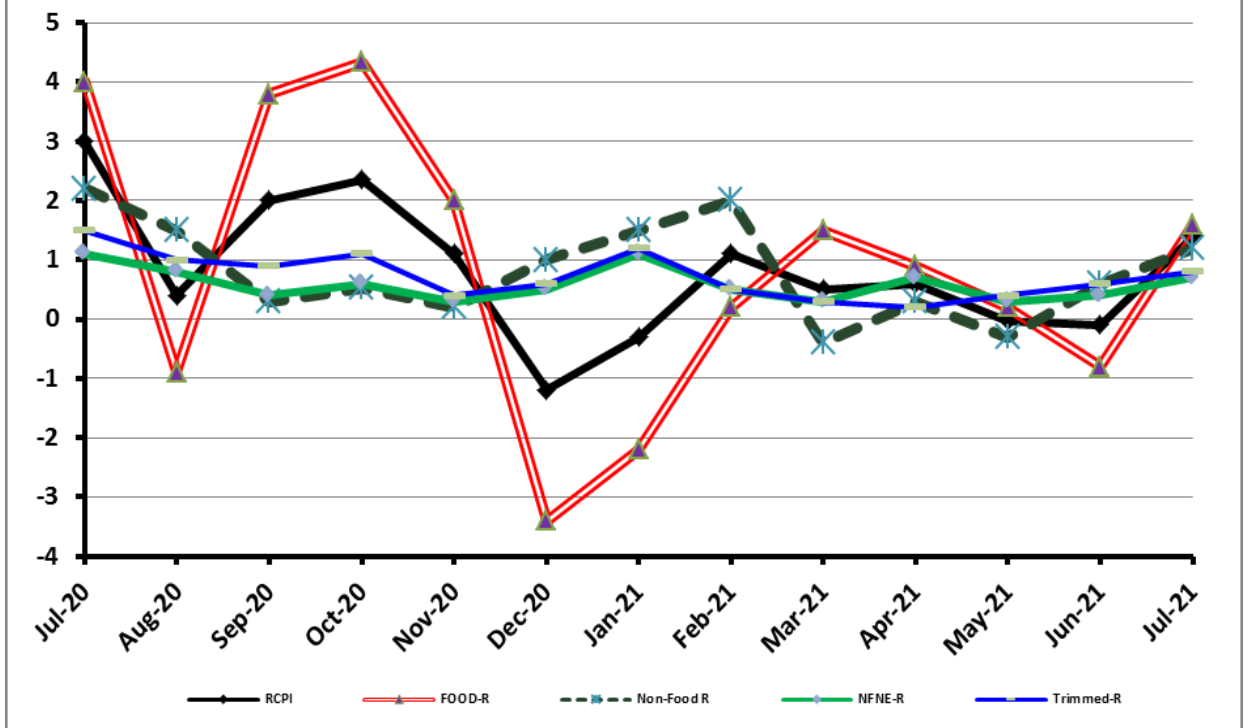


Figure 5: CPI Y.o.Y (National, Urban, Rural)

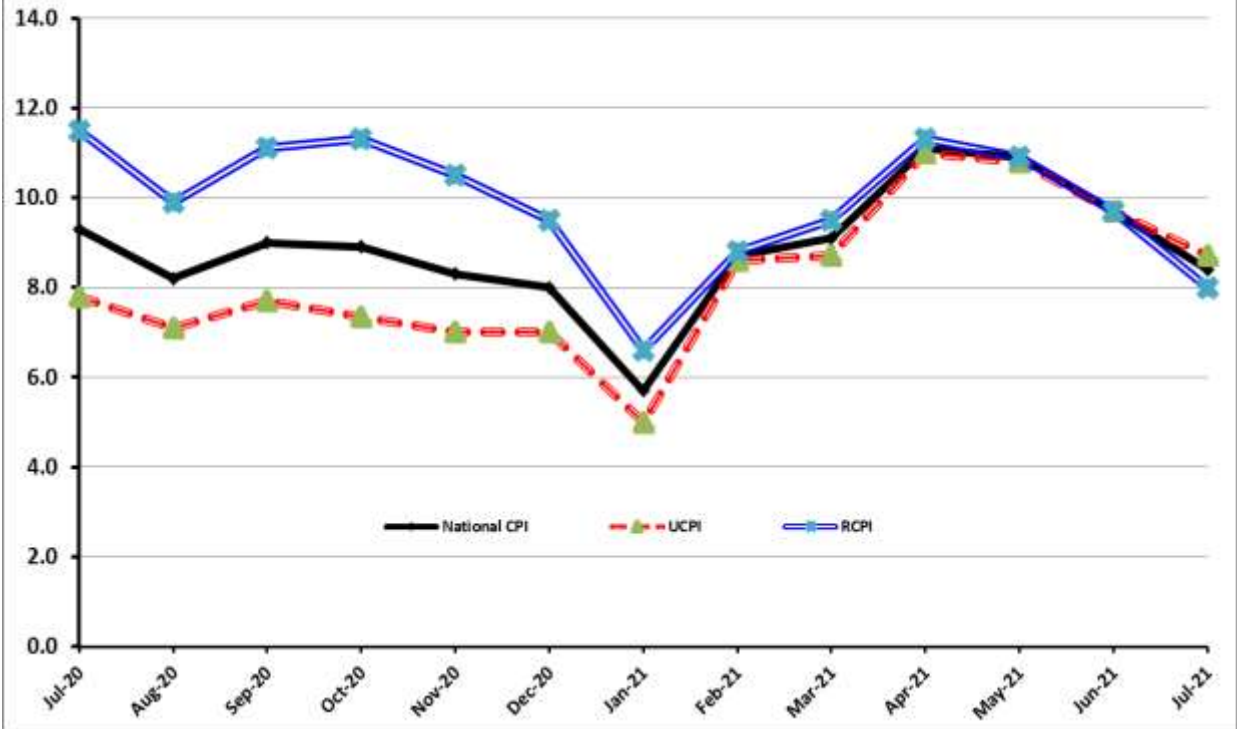
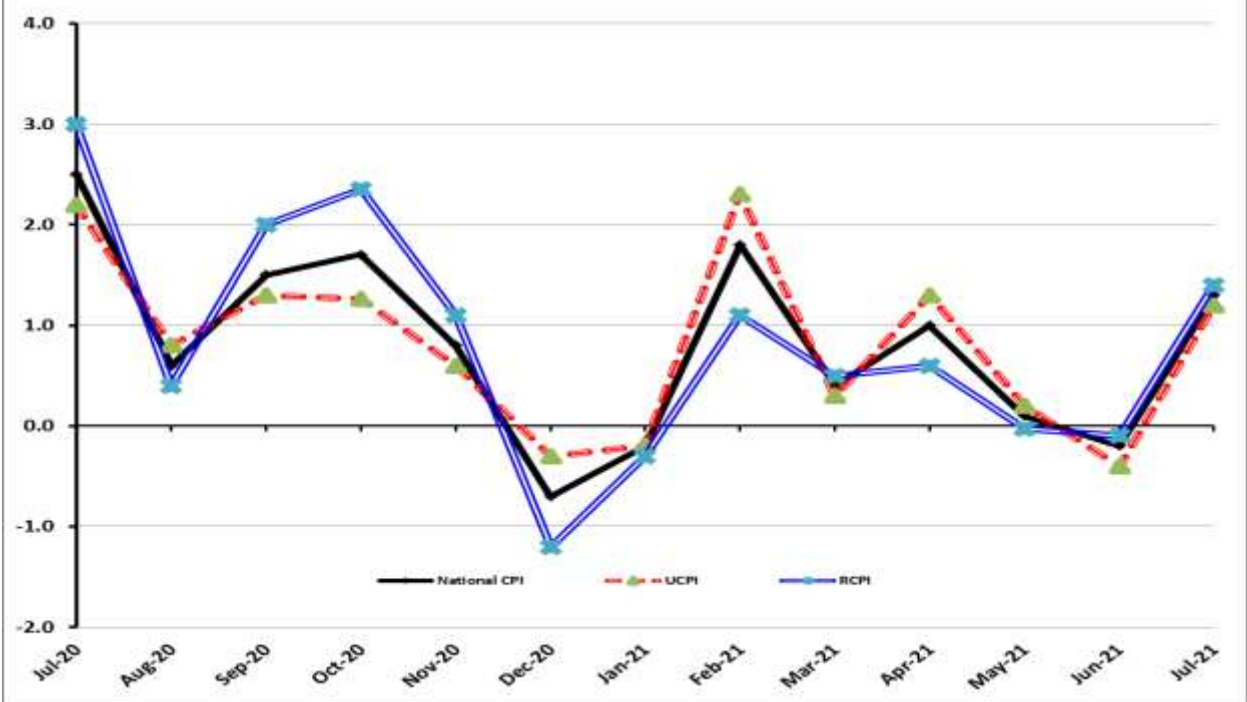


Figure 6: CPI M.o.M (National, Urban, Rural)



## I. National Consumer Price Index (N-CPI)

The **National Consumer Price Index** for **July 2021** is **increased** by **1.34%** over **June 2021** and increased by **8.40%** over corresponding month of the last year i.e. **July 2020**.

Table 1: Consumer Price Index (National) by Group of Commodities and Services (Base 2015-16)									
No	Group	Group Weight (%)	Indices			% Change July 2021 Over		Impact (In % points) July 2021 Over	
			July 2021	June 2021	July 2020	June 2021	July 2020	June 2021	July 2020
	<b>General</b>	<b>100.00</b>	146.76	144.82	135.38	1.34	8.40	1.34	8.40
1.	Food & Non-alcoholic Bev.	34.58	151.65	149.04	140.11	1.75	8.24	0.62	2.95
	<i>Non-perishable Food Items</i>	<i>29.60</i>	<i>153.27</i>	<i>152.29</i>	<i>137.39</i>	<i>0.65</i>	<i>11.56</i>	<i>0.20</i>	<i>3.47</i>
	<i>Perishable Food Items</i>	<i>4.99</i>	<i>142.01</i>	<i>129.75</i>	<i>156.27</i>	<i>9.45</i>	<i>-9.12</i>	<i>0.42</i>	<i>-0.52</i>
2.	Alcoholic Bev. & Tobacco	1.02	144.69	144.79	140.29	-0.07	3.14	0.00	0.03
3.	Clothing & Footwear	8.60	149.60	149.14	136.66	0.31	9.47	0.03	0.82
4.	Housing, Water, Electricity, Gas & Fuels	23.63	142.08	140.11	130.14	1.40	9.17	0.32	2.08
5.	Furnishing & Household Equipment Maintenance	4.10	143.21	141.97	130.44	0.88	9.79	0.04	0.39
6.	Health	2.79	154.33	153.93	142.09	0.26	8.61	0.01	0.25
7.	Transport	5.91	148.88	143.13	134.75	4.01	10.49	0.23	0.62
8.	Communication	2.21	109.94	108.65	106.96	1.19	2.79	0.02	0.05
9.	Recreation & Culture	1.59	128.17	127.35	121.01	0.64	5.91	0.01	0.08
10.	Education	3.79	145.30	144.95	142.40	0.24	2.04	0.01	0.08
11.	Restaurants & Hotels	6.92	143.85	143.36	132.60	0.34	8.49	0.02	0.58
12.	Miscellaneous	4.87	154.26	153.38	141.05	0.58	9.37	0.03	0.48



## II. Urban Consumer Price Index (UCPI)

The Urban Consumer Price Index of July 2021 is increased by 1.29% over June 2021 and increased by 8.67% over corresponding month of the last year i.e. July 2020.

Table 2: Consumer Price Index (Urban) by Group of Commodities and Services (Base 2015-16)

No	Group	Group Weight (%)	Indices			% Change July 2021 Over		Impact (In % points)	
			July 2021	June 2021	July 2020	June 2021	July 2020	June 2021	July 2020
	<b>General</b>	<b>100.00</b>	146.41	144.54	134.73	1.29	8.67	1.29	8.67
1.	Food & Non-alcoholic Bev.	30.42	151.66	149.13	138.88	1.70	9.20	0.53	2.88
	<i>Non-perishable Food Items</i>	25.97	153.10	151.82	135.81	0.84	12.73	0.23	3.33
	<i>Perishable Food Items</i>	4.46	143.23	133.48	156.81	7.30	-8.66	0.30	-0.45
2.	Alcoholic Bev.& Tobacco	0.85	153.94	153.94	148.36	0.00	3.76	0.00	0.04
3.	Clothing & Footwear	8.01	146.78	146.45	132.97	0.23	10.39	0.02	0.82
4.	Housing, Water, Electricity, Gas & Fuels	27.03	143.00	141.05	131.76	1.38	8.53	0.37	2.25
5.	Furnishing & Household Equip. & Maintenance	4.09	142.29	140.90	130.01	0.99	9.45	0.04	0.37
6.	Health	2.31	155.00	154.68	141.55	0.21	9.50	0.01	0.23
7.	Transport	6.14	150.24	144.31	134.88	4.11	11.39	0.25	0.70
8.	Communication	2.35	112.29	110.36	108.22	1.75	3.76	0.03	0.07
9.	Recreation & Culture	1.73	125.24	124.35	118.86	0.72	5.37	0.01	0.08
10.	Education	4.88	147.13	146.89	144.98	0.16	1.48	0.01	0.08
11.	Restaurants & Hotels	7.41	143.31	142.77	130.92	0.38	9.46	0.03	0.68
12.	Miscellaneous	4.77	153.38	153.20	140.40	0.12	9.25	0.01	0.46

Main contributors to month-on-month and year-on-year percentage changes are given below and detail is given in **Annexure-A**.

### 1. MONTH-ON-MONTH Top few commodities which varied from previous month are given below: -

#### FOOD

**Increased:** Tomatoes (82.40%), Onions (34.53%), Vegetable ghee (6.70%), Cooking oil (6.56%), Sugar (5.08%), Potatoes (4.89%), Pulse gram (4.89%), Vegetables (3.69%), Eggs (3.48%), Condiments and Spices (2.65%) and Mustard oil (1.54%).

**Decreased:** Pulse moong (11.36%), Chicken (10.07%), Fruits (7.51%), Pulse mash (5.18%), Pulse masoor (1.24%) and Gram whole (0.92%).

#### NON-FOOD

**Increased:** Liquefied Hydrocarbons (12.73%), Motor fuel (8.08%), Plastic products (2.44%), Household equipment's (2.14%), Construction items (1.77%) and Furniture and furnishing (1.28%).

**Decreased:** Personal Effects (0.73%).

**YEAR-ON-YEAR: Top few commodities which varied from corresponding month of previous year i.e. July, 2020 are given below: -**

#### FOOD

**Increased:** Mustard oil (33.32%), Vegetable ghee (32.85%), Cooking oil (31.70%), Eggs (24.07%), Sugar (23.01%), Condiments and Spices (17.64%), Wheat flour (14.92%), Butter (13.77%), Milk (13.73%), Meat (13.31%) and Pulse gram (10.69%).

**Decreased:** Tomatoes (21.82%), Pulse moong (20.75%), Potatoes (16.17%), Fruits (13.93%), Chicken (13.02%) and Vegetables (6.63%).

#### NON-FOOD

**Increased:** Liquefied Hydrocarbons (37.58%), Electricity charges (21.72%), Motor fuel (16.43%), Footwear (16.22%), Cleaning and laundering (12.85%), Household equipment's (12.2%), Woollen readymade garments (12.08%) and Hosiery (11.84%).

### III. Rural Consumer Price Index (RCPI)

The Rural Consumer Price Index of July 2021 is increased by 1.40% over June 2021 and increased by 8.01% over corresponding month of the last year i.e. July 2020.

**Table 3: Consumer Price Index (Rural) by Group of Commodities and Services (Base 2015-16)**

No	Group	Group Weight (%)	Indices			% Change July 2021 Over		Impact (In % points) July 2021 Over	
			July 2021	June 2021	July 2020	June 2021	July 2020	June 2021	July 2020
	<b>General</b>	<b>100.00</b>	147.28	145.24	136.36	1.40	8.01	1.40	8.01
1.	Food & Non-alcoholic Bev.	40.87	151.64	148.93	141.49	1.82	7.17	0.76	3.04
	<i>Non-perishable Food Items</i>	35.08	153.46	152.81	139.15	0.43	10.28	0.16	3.68
	<i>Perishable Food Items</i>	5.79	140.60	125.41	155.64	12.11	-9.66	0.61	-0.64
2.	Alcoholic Bev. & Tobacco	1.28	135.37	135.56	132.15	-0.14	2.44	0.00	0.03
3.	Clothing & Footwear	9.48	153.20	152.58	141.36	0.41	8.38	0.04	0.82
4.	Housing, Water, Electricity, Gas & Fuels	18.49	140.05	138.05	126.58	1.45	10.64	0.25	1.83
5.	Furnishing & Household Equip. & Maintenance	4.10	144.60	143.57	131.08	0.72	10.31	0.03	0.41
6.	Health	3.51	153.66	153.18	142.62	0.31	7.74	0.01	0.28
7.	Transport	5.56	146.61	141.17	134.53	3.85	8.98	0.21	0.49
8.	Communication	1.99	105.77	105.61	104.72	0.15	1.00	0.00	0.02
9.	Recreation & Culture	1.38	133.72	133.03	125.09	0.52	6.90	0.01	0.09
10.	Education	2.13	138.99	138.27	133.48	0.52	4.13	0.01	0.09
11.	Restaurants & Hotels	6.19	144.82	144.42	135.62	0.28	6.78	0.02	0.42
12.	Miscellaneous	5.02	155.53	153.63	141.98	1.24	9.54	0.07	0.50

Main contributors to Month-on-Month and Year-on-Year percentage changes are given below and detail is given in **Annexure-B**.

#### 1. MONTH-ON-MONTH Top few commodities which varied from previous month are given below: -

##### **FOOD**

**Increased:** Tomatoes (101.63%), Onions (47.62%), Potatoes (12.66%), Vegetables (5.16%), Sugar (4.33%), Vegetable ghee (3.16%), Cooking oil (2.27%), Mustard oil (1.30%), Milk (1.19%) and Rice (1.05%).

**Decreased:** Chicken (12.95%), Pulse Moong (10.06%), Fruits (8.40%), Pulse Mash (2.41%), Pulse Gram (1.83%) and Fish (1.79%).

##### **NON-FOOD**

**Increased:** Liquefied Hydrocarbons (12.56%), Motor Fuels (7.71%), Cleaning and Laundering (1.73%), Plastic Products (1.6%), Clinic Fee (1.46%) and Construction Items (1.44%).

#### 2. YEAR-ON-YEAR: Top few commodities which varied from corresponding month of previous year i.e. July 2020 are given below: -

##### **FOOD**

**Increased:** Cooking oil (33.43%), Mustard oil (33.23%), Vegetable ghee (30.41%), Eggs (22.37%), Sugar (21.46%), Meat (15.19%), Wheat Flour (13.29%), Butter (11.22%) and Milk (9.36%).

**Decreased:** Tomatoes (26.85%), Pulse Moong (22.33%), Potatoes (13.77%), Fruits (13.45%), Chicken (11.56%), Vegetables (5.61%) and Condiments and Spices (3.43%)

##### **NON-FOOD**

**Increased:** Liquefied Hydrocarbons (31.13%), Electricity Charges (21.72%), Motor Fuels (15.27%), Hosiery (14.5%), Clinic Fee (12.86%), Woolen Cloth (11.74%), Products (11.25%), Household Equipment's (10.99%), Tailoring (10.16%) and Construction Items (9.81%).

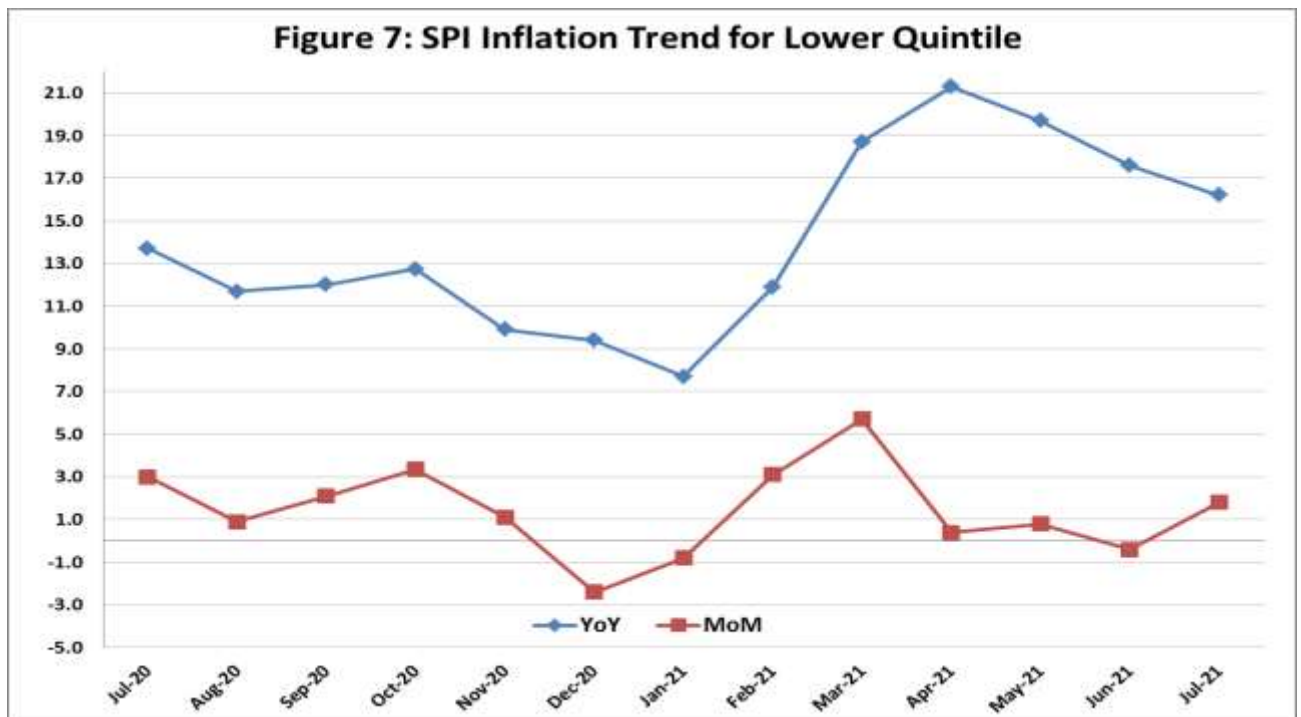
#### IV. Sensitive Price Indicator

Quintile-wise percentage changes YoY and MoM are given below in Table 4. The series from July 2020 to July 2021 is also graphed below in Figure 7.

Table 4: Sensitive Price Indicator (Base 2015-16)					
Quintiles	Indices			% Change July 2021 Over	
	July 2021	June, 2021	July 2020	June, 2021	July, 2020
1	162.25	159.38	139.66	1.80	16.17
2	151.37	148.89	134.23	1.67	12.77
3	152.63	150.36	136.22	1.51	12.05
4	148.91	146.89	133.07	1.38	11.90
5	150.30	148.16	134.34	1.44	11.88
<b>Combined</b>	150.33	148.21	133.50	1.43	12.61

Table 4.1 : Weekly Percentage Change of SPI During July - 2021					
Quintiles	% Change with Previous week				
	01-07-2021	08-07-2021	15-07-2021	22-07-2021*	29-07-2021
Quintile 1	0.67	0.42	0.48	0.48	-0.02
Combined	0.53	0.07	0.41	0.41	0.03

\*: SPI data for July 15, 2021 was repeated for July 22, 2021 due to Eid-UI-Adha holidays notified for July 20-22, 2021.



## V. Wholesale Price Index

The Wholesale Price Index for July, 2021 increased by **2.28%** over June, 2021. It increased by **17.27%** over the corresponding month of the last year i.e. July, 2020. YoY and MoM movements, from July, 2020 to July, 2021 are also graphed below in Figure 8.

**Table 5: Wholesale Price Index by Group of Commodities (Base 2015-16)**

No	Group	Group Weight (%)	Indices			% Change July 2021 Over		Impact (In % points) July 2021 Over	
			July 2021	June 2021	July 2020	June 2021	July 2020	June 2021	July 2020
	<b>General</b>	<b>100.00</b>	167.86	164.12	143.14	2.28	17.27	2.28	17.27
1	Agriculture Forestry & Fishery	25.77	169.70	167.14	142.06	1.53	19.46	0.40	4.98
2	Ores/Minerals, Elec., Gas & Water	12.01	168.51	167.12	161.11	0.83	4.59	0.10	0.62
3	Food, Beverages, Tobacco, Textiles & Leather Products	31.11	162.60	160.39	139.64	1.38	16.44	0.42	4.99
	i. Food Products, Beverages & Tobacco	20.07	158.66	156.23	137.23	1.56	15.62	0.30	3.00
	ii. Textiles & Apparels	10.33	173.22	171.30	145.76	1.12	18.84	0.12	1.98
	iii. Leather Products	0.71	119.35	119.35	118.88	0.00	0.40	0.00	0.00
4	Other Transportable Goods	22.40	173.26	165.33	138.95	4.80	24.69	1.08	5.37
5	Metal Product, Machinery & Equipment	8.72	166.42	161.24	144.85	3.21	14.89	0.27	1.31

Main contributors to month-on-month and year-on-year percentage changes are given below and detail is given in **Annexure-C**.

### 1. **MONTH-ON-MONTH** Top few commodities which varied from previous month are given below: -

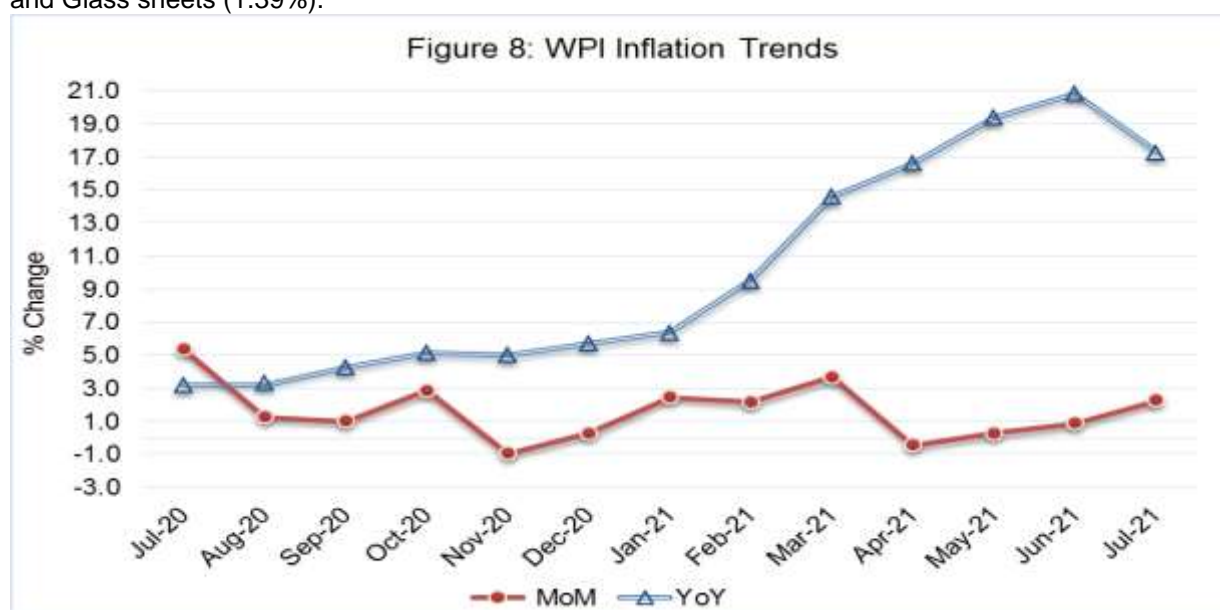
**Increased:** Oil Seeds (30.21%), Potatoes (13.91%), Vegetables (11.99%), Steel Bar & Sheets (11.62%), Furnace Oil (10.18%), Motor Spirit (8.51%), Kerosene Oil (6.79%), Diesel (5.32%), Vegetable Ghee (5.23%), Sugar (4.72%), Motorcycles (4.24%), Bed Sheets (3.87%), Jowar (3.81%), Quilts (3.47%), Eggs (3.28%) and Cement (2.16%).

**Decreased:** Poultry (10.48%), Bajra (2.63%), Pulses (2.43%) and Fruits (2.08%).

### 2. **YEAR-ON-YEAR** Top few commodities which varied from **corresponding month of** previous year i.e. July, 2020 are given below: -

**Increased:** Bajra (85.82%), Fibre Crops (66.87%), Oil Seeds (55.44%), Furnace Oil (53.02%), Kerosine Oil (45.73%), Spices (42.52%), Vegetable Ghee (40.58%), Steel Bar & Sheets (33.20%), Diesel (32.22%), Cotton Yarn (23.46%), Eggs(23.35%), Sugar (21.37%), Fertilizers (20.45%), Meat (17.23%), Motor Spirit (16.41%), Rice (15.37%) and Maize (13.11%).

**Decreased:** Potatoes (17.17%), Poultry (16.16%), Raw Skins & Fur Skins (11.76%), Vegetables (4.42%) and Glass sheets (1.39%).



**Annexure A:CPI (Urban) Index Numbers by Commodity Groups & Commodities (2015-16=100)**

Item and Specification	Weight	Index Numbers			% Change in Jul 2021 over			
		Jul 21	Jun 21	Jul 20	Jun 2021	Jul 2020		
<b>General</b>	<b>100.0000</b>	<b>146.41</b>	<b>144.55</b>	<b>134.73</b>	<b>+</b>	<b>1.29</b>	<b>+</b>	<b>8.67</b>
<b>Food and non-alcoholic Bevera</b>	<b>30.4215</b>	<b>151.66</b>	<b>149.13</b>	<b>138.88</b>	<b>+</b>	<b>1.70</b>	<b>+</b>	<b>9.20</b>
01 Wheat	0.6120	153.98	154.29	139.29	-	0.20	+	10.55
02 Wheat flour	3.0075	147.46	147.79	128.32	-	0.22	+	14.92
03 Wheat products	0.0936	160.75	159.52	129.40	+	0.77	+	24.23
04 Besan	0.0830	125.39	125.44	117.95	-	0.04	+	6.31
05 Rice	1.1804	146.70	145.40	135.86	+	0.89	+	7.98
06 Bakery and confectionary	0.4770	148.47	148.38	127.15	+	0.06	+	16.77
07 Nimco	0.1224	144.86	144.39	129.75	+	0.33	+	11.65
08 Meat	2.0411	174.06	172.38	153.62	+	0.97	+	13.31
09 Chicken	1.3631	123.08	136.86	141.50	-	10.07	-	13.02
10 Fish	0.3855	112.86	113.13	113.60	-	0.24	-	0.65
11 Milk fresh	7.1070	142.60	141.24	125.39	+	0.96	+	13.73
12 Milk products	0.6407	146.68	145.49	128.05	+	0.82	+	14.55
13 Milk powder	0.3106	138.86	138.33	130.29	+	0.38	+	6.58
14 Eggs	0.5083	182.46	176.33	147.06	+	3.48	+	24.07
15 Butter	0.0932	195.19	193.95	171.57	+	0.64	+	13.77
16 Mustard oil	0.0120	168.88	166.32	126.67	+	1.54	+	33.32
17 Cooking oil	1.1016	188.17	176.58	142.88	+	6.56	+	31.70
18 Vegetable ghee	1.0324	197.41	185.02	148.60	+	6.70	+	32.85
19 Dry fruits	0.3299	137.03	137.03	130.37	+	0.00	+	5.11
20 Fresh fruits	1.4363	130.40	140.99	151.50	-	7.51	-	13.93
21 Pulse masoor	0.1624	106.31	107.65	103.41	-	1.24	+	2.80
22 Pulse moong	0.1697	121.52	137.10	153.33	-	11.36	-	20.75
23 Pulse mash	0.1152	105.31	111.06	101.84	-	5.18	+	3.41
24 Pulse gram	0.1660	128.02	122.05	115.66	+	4.89	+	10.69
25 Gram whole	0.0912	129.39	130.59	125.07	-	0.92	+	3.45
26 Beans	0.0408	160.39	159.90	148.56	+	0.31	+	7.96
27 Potatoes	0.4496	202.33	192.90	241.36	+	4.89	-	16.17
28 Onions	0.5928	107.06	79.58	97.59	+	34.53	+	9.70
29 Tomatoes	0.3459	154.80	84.87	198.00	+	82.40	-	21.82
30 Fresh vegetables	1.5306	133.99	129.22	143.50	+	3.69	-	6.63
31 Sugar	1.1130	166.50	158.45	135.35	+	5.08	+	23.01
32 Gur	0.0379	151.65	150.08	137.48	+	1.05	+	10.31
33 Honey	0.1017	131.84	131.29	124.39	+	0.42	+	5.99
34 Sweetmeat	0.3535	156.04	153.10	143.37	+	1.92	+	8.84
35 Ice cream	0.1044	146.34	146.19	133.79	+	0.10	+	9.38
36 Condiments and Spices	1.3340	222.03	216.29	188.74	+	2.65	+	17.64
37 Dessert preparation	0.0419	133.21	133.10	125.30	+	0.08	+	6.31
38 Tea	0.8427	140.84	140.84	140.74	+	0.00	+	0.07
39 Beverages	0.8906	131.44	131.05	126.99	+	0.30	+	3.50
<b>Alcoholic Beverages, Tobacco</b>	<b>0.8540</b>	<b>153.94</b>	<b>153.94</b>	<b>148.36</b>	<b>+</b>	<b>0.00</b>	<b>+</b>	<b>3.76</b>
40 Cigarettes	0.7167	141.09	141.09	139.07	+	0.00	+	1.45
41 Pan prepared	0.1373	221.00	221.00	196.90	+	0.00	+	12.24
<b>Clothing and footwear</b>	<b>8.0096</b>	<b>146.78</b>	<b>146.45</b>	<b>132.97</b>	<b>+</b>	<b>0.23</b>	<b>+</b>	<b>10.39</b>
42 Cotton cloth	2.2227	150.39	150.24	137.01	+	0.10	+	9.77
43 Woolen cloth	0.8361	141.25	141.24	128.47	+	0.01	+	9.95
44 Readymade garments	1.3196	139.34	139.10	130.49	+	0.17	+	6.78
45 Woolen readymade garments	0.4307	142.21	142.21	126.88	+	0.00	+	12.08
46 Tailoring	1.0741	152.45	150.72	140.83	+	1.15	+	8.25
47 Hosiry	0.4070	144.55	144.29	129.25	+	0.18	+	11.84
48 Dopatta	0.1713	129.93	129.93	124.79	+	0.00	+	4.12
49 Cleaning and laundrying	0.0665	148.59	148.51	131.67	+	0.05	+	12.85
50 Footware	1.4816	150.78	150.78	129.74	+	0.00	+	16.22
<b>Housing, water, Elec., Gas an</b>	<b>27.0332</b>	<b>143.00</b>	<b>141.05</b>	<b>131.76</b>	<b>+</b>	<b>1.38</b>	<b>+</b>	<b>8.53</b>
51 House rent	19.2558	140.07	138.09	132.08	+	1.43	+	6.05
52 Construcion input items	0.3765	157.03	154.30	143.20	+	1.77	+	9.66
53 Construction wage rates	0.2025	157.85	156.06	149.55	+	1.15	+	5.55
54 Water supply	0.5269	158.84	158.72	143.78	+	0.08	+	10.47
55 Garbage collection	0.1064	174.58	173.90	167.30	+	0.39	+	4.35
56 Electricity charges	4.5562	131.51	130.87	108.04	+	0.49	+	21.72
57 Gas charges	1.0807	216.94	216.94	216.94	+	0.00	+	0.00
58 Liquified Hydrocarbons	0.5064	179.02	158.81	130.12	+	12.73	+	37.58
59 Solid Fuel	0.4218	120.73	120.79	114.45	-	0.05	+	5.49

**Annexure A:CPI (Urban) Index Numbers by Commodity Groups & Commodities (2015-16=100)**

Item and Specification	Weight	Index Numbers			% Change in Jul 2021 over			
		Jul 21	Jun 21	Jul 20	Jun 2021	Jul 2020		
<b><i>Furnishing and household equi</i></b>	<b>4.0937</b>	<b>142.29</b>	<b>140.90</b>	<b>130.01</b>	<b>+</b>	<b>0.99</b>	<b>+</b>	<b>9.45</b>
60 Furniture and furnishing	0.4750	143.57	141.76	130.99	+	1.28	+	9.60
61 Carpets	0.0308	113.24	113.24	112.03	+	0.00	+	1.08
62 Household textiles	0.3420	135.54	135.27	126.11	+	0.20	+	7.48
63 Household equipments	1.0032	145.78	142.73	129.93	+	2.14	+	12.20
64 Plastic products	0.0536	125.70	122.71	117.68	+	2.44	+	6.82
65 Major tools & equipments	0.0084	138.67	138.62	125.72	+	0.04	+	10.30
66 Washing soap/detergents/match	1.4112	145.93	144.87	130.10	+	0.73	+	12.17
67 Household servant	0.7695	135.61	135.61	132.71	+	0.00	+	2.19
<b><i>Health</i></b>	<b>2.3098</b>	<b>155.00</b>	<b>154.68</b>	<b>141.55</b>	<b>+</b>	<b>0.21</b>	<b>+</b>	<b>9.50</b>
68 Drugs and medicines	1.0735	154.71	154.58	141.05	+	0.08	+	9.68
69 Therapeutic Appliances and Eq	0.0054	116.66	116.64	112.42	+	0.02	+	3.77
70 Doctor (MBBS) clinic fee	0.4044	192.56	192.11	172.10	+	0.23	+	11.89
71 Dental services	0.0156	128.98	128.98	118.91	+	0.00	+	8.47
72 Medical tests	0.2367	134.74	134.39	126.68	+	0.26	+	6.36
73 Hospitals services	0.5742	138.50	137.93	127.99	+	0.41	+	8.21
<b><i>Transport</i></b>	<b>6.1368</b>	<b>150.24</b>	<b>144.31</b>	<b>134.88</b>	<b>+</b>	<b>4.11</b>	<b>+</b>	<b>11.39</b>
74 Motor vehicles	0.8097	151.83	154.49	147.76	-	1.72	+	2.75
75 Motor vehicle accessories	0.1941	142.81	141.95	131.04	+	0.61	+	8.98
76 Motor fuel	2.9088	164.41	152.12	141.21	+	8.08	+	16.43
77 Mechanical services	0.4290	138.01	137.66	131.11	+	0.25	+	5.26
78 Motor vehicle tax	0.0482	136.37	126.72	126.72	+	7.62	+	7.62
79 Transport services	1.7470	130.13	128.98	119.93	+	0.89	+	8.50
<b><i>Communication</i></b>	<b>2.3536</b>	<b>112.29</b>	<b>110.36</b>	<b>108.22</b>	<b>+</b>	<b>1.75</b>	<b>+</b>	<b>3.76</b>
80 Postal services	0.0190	163.41	162.27	147.05	+	0.70	+	11.13
81 Communication apparatus	0.4524	128.14	119.65	118.75	+	7.10	+	7.91
82 Communication Services	1.8822	107.97	107.61	105.30	+	0.33	+	2.54
<b><i>Recreation and culture</i></b>	<b>1.7301</b>	<b>125.24</b>	<b>124.35</b>	<b>118.86</b>	<b>+</b>	<b>0.72</b>	<b>+</b>	<b>5.37</b>
83 Recreation and culture	0.6478	114.76	113.96	110.71	+	0.70	+	3.66
84 Text books	0.6655	127.71	126.34	118.66	+	1.08	+	7.63
85 Newspapers	0.0716	151.55	151.55	151.55	+	0.00	+	0.00
86 stationery	0.3452	134.68	134.40	127.78	+	0.21	+	5.40
<b><i>Education</i></b>	<b>4.8807</b>	<b>147.13</b>	<b>146.89</b>	<b>144.98</b>	<b>+</b>	<b>0.16</b>	<b>+</b>	<b>1.48</b>
87 Education	4.8807	147.13	146.89	144.98	+	0.16	+	1.48
<b><i>Restaurants and hotels</i></b>	<b>7.4050</b>	<b>143.31</b>	<b>142.77</b>	<b>130.92</b>	<b>+</b>	<b>0.38</b>	<b>+</b>	<b>9.46</b>
88 Readymade food	5.5235	145.70	144.99	130.57	+	0.49	+	11.59
89 Marriage Hall Charges	1.7514	137.97	137.97	133.41	+	0.00	+	3.42
90 Accommodation Services	0.1301	113.30	113.30	112.40	+	0.00	+	0.80
<b><i>Misc. goods and services</i></b>	<b>4.7720</b>	<b>153.38</b>	<b>153.41</b>	<b>140.40</b>	<b>-</b>	<b>0.02</b>	<b>+</b>	<b>9.25</b>
91 Personal Grooming Services	0.8001	138.39	138.39	128.38	+	0.00	+	7.80
92 Electrical Appliances for Per	0.0465	118.50	118.50	116.91	+	0.00	+	1.36
93 Appliances/Articles/Products	2.9807	144.24	143.49	128.69	+	0.52	+	12.08
94 Personal Effects n.e.c.	0.9447	196.65	199.16	188.67	-	1.26	+	4.23

**Annexure B:CPI (Rural) Index Numbers by Commodity Groups & Commodities (2015-16=100)**

Item and Specification	Weight	Index Numbers			% Change in Jul 2021 over			
		Jul 21	Jun 21	Jul 20	Jun 2021	Jul 2020		
<b>General</b>	<b>100.0000</b>	<b>147.28</b>	<b>145.24</b>	<b>136.36</b>	<b>+</b>	<b>1.40</b>	<b>+</b>	<b>8.01</b>
<b>Food and non-alcoholic Beverage</b>	<b>40.8668</b>	<b>151.64</b>	<b>148.93</b>	<b>141.49</b>	<b>+</b>	<b>1.82</b>	<b>+</b>	<b>7.17</b>
01 Wheat	3.4736	153.57	152.34	140.61	+	0.81	+	9.22
02 Wheat Flour	3.4297	150.27	149.22	132.64	+	0.70	+	13.29
03 Wheat Products	0.1068	150.20	149.27	128.56	+	0.62	+	16.83
04 Besan	0.0728	127.96	127.90	121.65	+	0.05	+	5.19
05 Rice	1.5501	187.79	185.83	173.97	+	1.05	+	7.94
06 Bakery and Confectionary	0.3702	147.38	146.42	129.46	+	0.66	+	13.84
07 Nimco	0.0774	132.95	131.46	118.41	+	1.13	+	12.28
08 Meat	1.7146	173.08	171.48	150.26	+	0.93	+	15.19
09 Chicken	1.4641	132.01	151.64	149.26	-	12.95	-	11.56
10 Fish	0.2640	123.70	125.95	120.92	-	1.79	+	2.30
11 Milk fresh	10.3803	137.96	136.34	126.15	+	1.19	+	9.36
12 Milk products	0.9624	135.28	134.27	125.09	+	0.75	+	8.15
13 Milk powder	0.1062	129.71	128.91	124.44	+	0.62	+	4.23
14 Eggs	0.5665	173.20	171.54	141.54	+	0.97	+	22.37
15 Butter	0.3333	147.72	146.71	132.82	+	0.69	+	11.22
16 Mustard oil	0.0136	172.73	170.52	129.65	+	1.30	+	33.23
17 Cooking oil	0.6011	201.60	197.13	151.09	+	2.27	+	33.43
18 Vegetable ghee	2.3764	207.16	200.82	158.85	+	3.16	+	30.41
19 Dry fruits	0.2496	155.00	155.38	141.30	-	0.24	+	9.70
20 Fresh fruits	1.4505	134.56	146.90	155.47	-	8.40	-	13.45
21 Pulse Masoor	0.2076	112.89	112.79	111.09	+	0.09	+	1.62
22 Pulse Moong	0.2510	128.14	142.47	164.98	-	10.06	-	22.33
23 Pulse Mash	0.1465	106.60	109.23	104.43	-	2.41	+	2.08
24 Pulse Gram	0.2751	123.11	125.40	116.84	-	1.83	+	5.37
25 Gram Whole	0.1116	127.21	127.20	117.85	+	0.01	+	7.94
26 Beans	0.0896	170.54	169.60	165.51	+	0.55	+	3.04
27 Potatoes	0.7437	230.71	204.78	267.56	+	12.66	-	13.77
28 Onions	0.8965	94.30	63.88	91.92	+	47.62	+	2.59
29 Tomatoes	0.5069	147.37	73.09	201.46	+	101.6	-	26.85
30 Fresh Vegetables	2.0947	120.94	115.01	128.13	+	5.16	-	5.61
31 Sugar	2.0296	165.06	158.21	135.90	+	4.33	+	21.46
32 Gur	0.1522	152.07	150.47	138.83	+	1.06	+	9.54
33 Honey	0.0296	137.87	135.70	125.29	+	1.60	+	10.04
34 Sweetmeat	0.3967	141.14	139.43	128.03	+	1.23	+	10.24
35 Ice Cream	0.0568	142.03	141.98	128.81	+	0.04	+	10.26
36 Condiments and Spices	1.4919	185.75	185.91	192.34	-	0.09	-	3.43
37 Dessert Preparation	0.0133	132.10	132.10	121.14	+	0.00	+	9.05
38 Tea	1.2566	138.10	138.10	137.87	+	0.00	+	0.17
39 Beverages	0.5537	133.06	133.03	127.49	+	0.02	+	4.37
<b>Alcoholic Beverages, Tobacco</b>	<b>1.2786</b>	<b>135.37</b>	<b>135.56</b>	<b>132.15</b>	<b>-</b>	<b>0.14</b>	<b>+</b>	<b>2.44</b>
40 Cigarettes	1.2364	133.97	134.17	131.02	-	0.15	+	2.25
41 Pan Prepared	0.0422	176.12	176.12	165.42	+	0.00	+	6.47
<b>Clothing and footwear</b>	<b>9.4826</b>	<b>153.20</b>	<b>152.58</b>	<b>141.36</b>	<b>+</b>	<b>0.41</b>	<b>+</b>	<b>8.38</b>
42 Cotton Cloth	2.8381	169.22	168.50	157.31	+	0.43	+	7.57
43 Woolen Cloth	1.0959	144.22	144.06	129.07	+	0.11	+	11.74
44 Readymade Garments	1.1345	144.78	143.17	134.45	+	1.12	+	7.68
45 Woolen Readymade Garments	0.5401	143.31	143.31	130.27	+	0.00	+	10.01
46 Tailoring	1.2999	151.62	150.81	137.63	+	0.54	+	10.16
47 Hosiery	0.4322	184.57	184.51	161.19	+	0.03	+	14.50
48 Dopatta	0.2078	143.75	141.73	133.09	+	1.43	+	8.01
49 Cleaning and Laundering	0.0176	144.17	141.72	135.51	+	1.73	+	6.39
50 Footwear	1.9165	137.49	137.31	130.98	+	0.13	+	4.97
<b>Housing, water, Elec., Gas an</b>	<b>18.4853</b>	<b>140.05</b>	<b>138.05</b>	<b>126.58</b>	<b>+</b>	<b>1.45</b>	<b>+</b>	<b>10.64</b>
51 House Rent	8.6110	140.21	138.56	132.21	+	1.19	+	6.05
52 Construction Input Items	0.6306	132.70	130.82	120.84	+	1.44	+	9.81
53 Construction Wage Rates	0.2526	160.04	158.49	150.88	+	0.98	+	6.07
54 Water Supply	0.0645	216.56	216.56	211.83	+	0.00	+	2.23
55 Garbage Collection	0.0080	154.75	150.24	142.31	+	3.00	+	8.74
56 Electricity Charges	3.4431	131.51	130.87	108.04	+	0.49	+	21.72
57 Liquefied Hydrocarbons	0.9994	155.44	138.09	118.54	+	12.56	+	31.13

**Annexure B:CPI (Rural) Index Numbers by Commodity Groups & Commodities (2015-16=100)**

Item and Specification	Weight	Index Numbers			% Change in Jul 2021 over	
		Jul 21	Jun 21	Jul 20	Jun 2021	Jul 2020
58 Solid Fuel	4.4761	141.64	141.32	130.01	+ 0.23	+ 8.95
<b>Furnishing and household equipments</b>	<b>4.1031</b>	<b>144.60</b>	<b>143.57</b>	<b>131.08</b>	<b>+ 0.72</b>	<b>+ 10.31</b>
59 Furniture and Furnishing	0.5786	146.53	145.44	134.36	+ 0.75	+ 9.06
60 Household Textiles	0.4382	134.08	133.69	128.09	+ 0.29	+ 4.68
61 Household Equipment	1.2774	152.70	151.50	137.58	+ 0.79	+ 10.99
62 Plastic Products	0.0776	159.83	157.32	143.67	+ 1.60	+ 11.25
63 Major Tools and Equipment	0.0324	129.61	129.61	118.45	+ 0.00	+ 9.42
64 Washing Soaps, Detergents and	1.6989	140.15	139.15	125.52	+ 0.72	+ 11.66
<b>Health</b>	<b>3.5141</b>	<b>153.66</b>	<b>153.18</b>	<b>142.62</b>	<b>+ 0.31</b>	<b>+ 7.74</b>
65 Drugs and Medicines	1.5792	154.89	154.69	143.05	+ 0.13	+ 8.28
66 Doctor Clinic Fee	0.5128	190.32	187.58	168.64	+ 1.46	+ 12.86
67 Dental Services	0.0181	132.61	132.61	122.97	+ 0.00	+ 7.84
68 Medical Tests	0.3967	154.62	154.62	145.37	+ 0.00	+ 6.36
69 Hospitals Services	1.0073	133.08	133.08	127.98	+ 0.00	+ 3.98
<b>Transport</b>	<b>5.5580</b>	<b>146.61</b>	<b>141.17</b>	<b>134.53</b>	<b>+ 3.85</b>	<b>+ 8.98</b>
70 Motor Vehicles	0.7305	134.36	134.34	128.17	+ 0.01	+ 4.83
71 Motor Vehicles Accessories	0.1572	144.50	142.46	135.85	+ 1.43	+ 6.37
72 Motor Fuels	2.4932	161.31	149.77	139.94	+ 7.71	+ 15.27
73 Mechanical Services	0.3645	156.82	156.82	153.45	+ 0.00	+ 2.20
74 Motor Vehicle Tax	0.0174	132.92	127.98	127.98	+ 3.86	+ 3.86
75 Transport Services	1.7952	129.42	128.84	125.71	+ 0.45	+ 2.95
<b>Communication</b>	<b>1.9940</b>	<b>105.77</b>	<b>105.61</b>	<b>104.72</b>	<b>+ 0.15</b>	<b>+ 1.00</b>
76 Postal Services	0.0070	149.43	149.43	149.43	+ 0.00	+ 0.00
77 Communication Apparatus	0.3362	121.31	120.85	118.95	+ 0.38	+ 1.98
78 Communication Services	1.6508	102.42	102.33	101.63	+ 0.09	+ 0.78
<b>Recreation and culture</b>	<b>1.3764</b>	<b>133.72</b>	<b>133.03</b>	<b>125.09</b>	<b>+ 0.52</b>	<b>+ 6.90</b>
79 Recreation and Culture	0.4763	136.03	136.03	129.12	+ 0.00	+ 5.35
80 Text Books	0.5047	121.01	119.13	113.59	+ 1.58	+ 6.53
81 Newspapers	0.0230	165.56	165.56	161.68	+ 0.00	+ 2.40
82 Stationery	0.3724	146.02	146.02	133.27	+ 0.00	+ 9.57
<b>Education</b>	<b>2.1342</b>	<b>138.99</b>	<b>138.27</b>	<b>133.48</b>	<b>+ 0.52</b>	<b>+ 4.13</b>
83 Education	2.1342	138.99	138.27	133.48	+ 0.52	+ 4.13
<b>Restaurants and hotels</b>	<b>6.1895</b>	<b>144.82</b>	<b>144.42</b>	<b>135.62</b>	<b>+ 0.28</b>	<b>+ 6.78</b>
84 Readymade Food	3.8001	156.50	155.84	142.00	+ 0.42	+ 10.21
85 Marriage Hall Charges	2.2525	127.75	127.75	126.93	+ 0.00	+ 0.65
86 Accommodation Services	0.1369	101.62	101.62	101.59	+ 0.00	+ 0.03
<b>Misc. goods and services</b>	<b>5.0174</b>	<b>155.53</b>	<b>153.63</b>	<b>141.98</b>	<b>+ 1.24</b>	<b>+ 9.54</b>
87 Personal Grooming Services	1.5363	160.44	157.76	139.16	+ 1.70	+ 15.29
88 Appliances/Articles/Products	2.2746	133.83	133.18	123.05	+ 0.49	+ 8.76
89 Personal Effects n.e.c.	1.2065	190.18	186.94	181.27	+ 1.73	+ 4.92



## Annexure C: Wholesale Price Indices by Major Groups &amp; Commodities

(2015-16=100)

Item and Specification	Weight	Index Numbers			% Change in Jul 2021 over			
		Jul 21	Jun 21	Jul 20	Jun 2021	Jul 2020		
<b>General</b>	<b>100.0000</b>	<b>167.86</b>	<b>164.12</b>	<b>143.14</b>	<b>+</b>	<b>2.28</b>	<b>+</b>	<b>17.27</b>
<b>Agriculture Forestry &amp; Fisher</b>	<b>25.7674</b>	<b>169.70</b>	<b>167.14</b>	<b>142.06</b>	<b>+</b>	<b>1.53</b>	<b>+</b>	<b>19.46</b>
001 Wheat	0.6297	152.43	152.99	140.80	-	0.37	+	8.26
002 Maize	0.6764	156.52	156.43	138.38	+	0.06	+	13.11
003 Rice	2.4413	176.29	176.20	152.81	+	0.05	+	15.37
004 Sorghum / Jowar	0.0214	213.89	206.04	210.78	+	3.81	+	1.48
005 Millet / Bajra	0.0374	235.14	241.50	126.54	-	2.63	+	<u>85.82</u>
006 Vegetables	1.2441	153.76	137.30	160.87	+	11.99	-	4.42
007 Fresh Fruits	1.5144	162.54	166.00	156.93	-	2.08	+	3.57
008 Dry Fruits	0.2478	138.25	138.67	130.38	-	0.30	+	6.04
009 Cotton Seeds	1.1511	141.78	141.53	134.86	+	0.18	+	5.13
010 Other Oil Seeds	0.0722	210.84	161.92	135.64	+	30.21	+	<u>55.44</u>
011 Edible Roots / Potatoes	0.2540	252.28	221.47	304.56	+	13.91	-	17.17
012 Stimulant & Spice Crops	0.1634	376.43	335.44	306.52	+	12.22	+	22.81
013 Pulses	0.4901	125.89	129.03	121.40	-	2.43	+	3.70
014 Sugar Crops	1.0725	139.03	139.03	122.32	+	0.00	+	13.66
015 Fibre Crops	5.3169	242.73	235.39	145.46	+	3.12	+	<u>66.87</u>
016 Unmanufactured Tobacco	0.0742	239.17	237.60	193.80	+	0.66	+	23.41
017 Poultry	0.5633	118.10	131.93	140.86	-	10.48	-	16.16
018 Raw Milk from Bovine Animals	7.0279	139.47	139.47	129.67	+	0.00	+	7.56
019 Eggs	0.5034	178.57	172.90	144.77	+	3.28	+	23.35
020 Raw Animal Materials / Wool	0.0351	107.08	107.08	105.39	+	0.00	+	1.60
021 Hides, Skins & Fur Skins, Raw	0.4834	34.06	34.04	38.60	+	0.06	-	11.76
022 Fuel Wood in Logs	0.0179	127.94	127.94	115.96	+	0.00	+	10.33
023 Fish Live Fresh or Chilled	1.7295	158.03	158.03	154.34	+	0.00	+	2.39
<b>Ores/Minerals, Elec., Gas &amp; W</b>	<b>12.0069</b>	<b>168.51</b>	<b>167.12</b>	<b>161.11</b>	<b>+</b>	<b>0.83</b>	<b>+</b>	<b>4.59</b>
024 Coal not Agglomerated	0.7508	75.79	75.79	75.79	+	0.00	+	0.00
025 Natural Gas Liquefied	5.7065	205.35	203.39	195.70	+	0.96	+	4.93
026 Salt & Pure Sodium Chloride	0.0584	169.23	169.23	161.88	+	0.00	+	4.54
027 Electrical Energy	5.4912	142.89	141.90	136.82	+	0.70	+	4.44
<b>Food, Beverages, Tobacco, Textil</b>	<b>31.1122</b>	<b>162.60</b>	<b>160.39</b>	<b>139.64</b>	<b>+</b>	<b>1.38</b>	<b>+</b>	<b>16.44</b>
<b>Food Products, Beverages &amp;</b>	<b>20.0718</b>	<b>158.66</b>	<b>156.23</b>	<b>137.23</b>	<b>+</b>	<b>1.56</b>	<b>+</b>	<b>15.62</b>
028 Meat of Animals	3.4559	180.46	178.38	153.94	+	1.17	+	17.23
029 Vegetables & Fruit Juice	0.0058	122.54	122.54	111.15	+	0.00	+	10.25
030 Dried Fruits & Nuts	0.1733	177.03	177.62	159.63	-	0.33	+	10.90
031 Fruit Juices	0.3880	131.77	131.77	125.44	+	0.00	+	5.05
032 Vegetable Oils Refined	1.9242	167.86	161.25	124.03	+	4.10	+	35.34
033 Vegetable Ghee	1.5632	202.29	192.24	143.90	+	5.23	+	40.58
034 Oil Cakes	0.9611	159.65	160.73	150.90	-	0.67	+	5.80
035 Processed Liquid Milk	4.4437	143.51	143.51	134.84	+	0.00	+	6.43
036 Milk & Cream in Solid Form	0.0316	135.88	135.48	128.79	+	0.30	+	5.51
037 Ice Cream	0.0047	147.94	144.03	126.15	+	2.71	+	17.27
038 Dairy Products N.E.C	0.0117	138.56	138.30	133.96	+	0.19	+	3.43
039 Wheat Flour	2.3034	152.49	152.12	136.02	+	0.24	+	12.11
040 Other Cereal Flour	0.0604	125.36	126.48	116.92	-	0.89	+	7.22
041 Sugar Refined	1.7975	166.49	158.98	137.18	+	4.72	+	21.37
042 Chocolate	0.0139	89.03	89.03	81.72	+	0.00	+	8.95
043 Sugar Confectionary	0.0738	187.66	187.48	161.56	+	0.10	+	16.15
044 Coffee & Tea	0.7303	129.91	129.90	129.26	+	0.01	+	0.50
045 Spices	0.1449	342.05	342.00	240.00	+	0.01	+	42.52
046 Other Food Products	0.0336	119.35	119.30	117.25	+	0.04	+	1.79
047 Mineral Water	0.0207	125.24	125.24	125.19	+	0.00	+	0.04
048 Beverages	0.6303	129.86	129.94	127.42	-	0.06	+	1.91
049 Tobacco Products	1.2998	104.23	104.23	104.23	+	0.00	+	0.00
<b>Textiles &amp; Apparels</b>	<b>10.3289</b>	<b>173.22</b>	<b>171.30</b>	<b>145.76</b>	<b>+</b>	<b>1.12</b>	<b>+</b>	<b>18.84</b>
050 Cotton Yarn	5.2491	203.51	203.51	164.84	+	0.00	+	23.46
051 Nylon Yarn	0.1719	95.24	95.24	95.24	+	0.00	+	0.00
052 Blended Yarn	0.1689	129.30	129.30	120.22	+	0.00	+	7.55
053 Woven Fabrics	0.0128	160.35	152.49	135.54	+	5.15	+	18.30
054 Cotton Fabrics	0.6343	169.71	162.88	149.50	+	4.19	+	13.52
055 Other Fabrics	1.1016	126.34	120.49	113.59	+	4.86	+	11.22
056 Silk & Reyon Fabrics	0.7350	168.08	156.63	130.26	+	7.31	+	29.03
057 Towels	0.1235	141.44	141.44	123.48	+	0.00	+	14.54
058 Blankets	0.0029	104.95	104.95	102.50	+	0.00	+	2.39
059 Bed Sheets	0.0913	127.88	123.12	119.45	+	3.87	+	7.06

## Annexure C: Wholesale Price Indices by Major Groups &amp; Commodities

(2015-16=100)

Item and Specification	Weight	Index Numbers			% Change in Jul 2021 over	
		Jul 21	Jun 21	Jul 20	Jun 2021	Jul 2020
060 Quilts	0.0019	121.31	117.24	109.35	+ 3.47	+ 10.94
061 Woolen Carpets	0.0383	137.01	137.01	137.01	+ 0.00	+ 0.00
062 Synthetic Carpets	0.0566	116.51	116.51	115.72	+ 0.00	+ 0.68
063 Hosiery Products	0.8832	137.31	137.20	122.67	+ 0.08	+ 11.93
064 Readymade Garments	1.0576	139.51	139.51	131.74	+ 0.00	+ 5.90
<b>Leather Products</b>	<b>0.7115</b>	<b>119.35</b>	<b>119.35</b>	<b>118.88</b>	+ <b>0.00</b>	+ <b>0.40</b>
065 Leather Without Hair	0.2973	108.77	108.77	108.00	+ 0.00	+ 0.71
066 Other Leather N.E.C	0.2567	111.77	111.77	111.77	+ 0.00	+ 0.00
067 Footwears	0.1575	151.69	151.69	151.00	+ 0.00	+ 0.46
<b>Other Transportable Goods</b>	<b>22.3979</b>	<b>173.26</b>	<b>165.33</b>	<b>138.95</b>	+ <b>4.80</b>	+ <b>24.69</b>
068 Timber	0.0165	155.92	155.92	140.66	+ 0.00	+ 10.85
069 Printing Paper	0.4279	130.70	130.70	130.70	+ 0.00	+ 0.00
070 Hard Board	0.1579	146.50	146.50	146.50	+ 0.00	+ 0.00
071 Motor Spirit	1.6268	163.77	150.93	140.68	+ 8.51	+ 16.41
072 Diesel Oil	5.4849	163.41	155.15	123.59	+ 5.32	+ 32.22
073 Kerosene Oil	0.2151	169.54	158.76	116.34	+ 6.79	+ 45.73
074 Furnace Oil	3.2664	331.64	301.00	216.73	+ 10.18	+ <u>53.02</u>
075 Mobil Oil	0.7114	131.01	129.75	122.25	+ 0.97	+ 7.17
076 Chemicals	1.7720	148.37	148.37	132.94	+ 0.00	+ 11.61
077 Dyeing Material	0.1539	146.16	146.16	146.16	+ 0.00	+ 0.00
078 Fertilizers	2.8657	112.97	112.60	93.79	+ 0.33	+ 20.45
079 Pesticides	0.2763	142.90	142.51	141.18	+ 0.27	+ 1.22
080 Insecticides	0.1276	111.49	111.49	111.49	+ 0.00	+ 0.00
081 Paints & Varnishes	0.1916	141.16	137.36	133.27	+ 2.77	+ 5.92
082 Medicines	1.1428	150.06	150.06	145.00	+ 0.00	+ 3.49
083 Soaps & Detergents	0.8168	117.55	116.71	113.51	+ 0.72	+ 3.56
084 Auto Tyres	0.2703	126.22	126.22	124.45	+ 0.00	+ 1.42
085 Plastic Products	0.4550	119.91	119.12	116.63	+ 0.66	+ 2.81
086 Glass sheets	0.2089	148.06	147.64	150.14	+ 0.28	- 1.39
087 Other Glass Articles	0.1635	150.08	150.08	144.31	+ 0.00	+ 4.00
088 Ceramics & Sanitary Fixture	0.0244	127.62	126.79	123.90	+ 0.65	+ 3.00
089 Bricks, Blocks & Tiles	0.1566	135.17	134.65	126.40	+ 0.39	+ 6.94
090 Cement	1.8145	131.27	128.49	119.23	+ 2.16	+ 10.10
091 Bed Foam	0.0006	157.23	157.23	146.33	+ 0.00	+ 7.45
092 Matches	0.0505	1173.3	1173.3	1171.7	+ 0.00	+ 0.13
<b>Metal Product, Machinery &amp; Equipment</b>	<b>8.7156</b>	<b>166.42</b>	<b>161.24</b>	<b>144.85</b>	+ <b>3.21</b>	+ <b>14.89</b>
093 Steel Bar & Sheets	1.4615	217.01	194.42	162.92	+ 11.62	+ 33.20
094 Pipe Fittings	0.0780	174.45	169.43	144.78	+ 2.96	+ 20.49
095 Steel Products	0.3879	134.30	134.30	133.78	+ 0.00	+ 0.39
096 Engines & Motors	0.0046	107.29	107.29	107.29	+ 0.00	+ 0.00
097 Vacuum Pumps	0.0155	107.56	107.56	107.56	+ 0.00	+ 0.00
098 Air Conditioners	0.0049	128.74	127.25	115.95	+ 1.17	+ 11.03
099 Cultivators	0.0551	103.75	103.75	103.75	+ 0.00	+ 0.00
100 Chuff Cutter	0.1293	121.43	121.43	110.00	+ 0.00	+ 10.39
101 Tractors	0.0028	135.63	129.36	122.16	+ 4.85	+ 11.03
102 Lathe Machines	0.0525	232.65	217.68	203.64	+ 6.88	+ 14.25
103 Concrete Mixture	0.0107	100.00	100.00	100.00	+ 0.00	+ 0.00
104 Fridge, WashM, SewM, Fans, Iron	1.1645	163.01	161.48	153.20	+ 0.95	+ 6.40
105 Electric Wires	0.0912	144.65	144.65	137.76	+ 0.00	+ 5.00
106 Lighting Equipments	1.4431	131.51	126.37	116.71	+ 4.07	+ 12.68
107 Radio & Television	0.1843	108.07	106.58	104.51	+ 1.40	+ 3.41
108 Motor Vehicles	0.0244	156.48	158.44	156.45	- 1.24	+ 0.02
109 Motorcycles	0.2570	137.77	132.17	122.49	+ 4.24	+ 12.47
110 Bicycles	3.3483	172.55	172.55	153.05	+ 0.00	+ 12.74