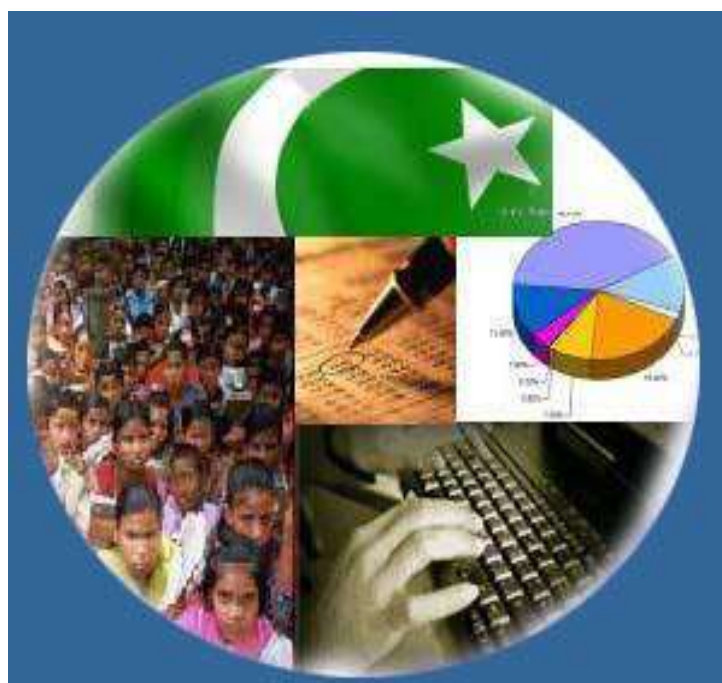




# Monthly Review on Price Indices



**February, 2021**  
**(Base Year 2015-16)**

**Government of Pakistan**  
**Ministry of Planning, Development & Special Initiatives**  
**Pakistan Bureau of Statistics**  
**Islamabad**



## Inflation in Brief

- CPI inflation General**, increased by 8.7% on year-on-year basis in February 2021 as compared to an increase of 5.7% in the previous month and 12.4% in February 2020. On month-on-month basis, it increased by 1.8% in February 2021 as compared to a decrease of 0.2% in the previous month and a decrease of 1.0% in February 2020.
- CPI inflation Urban**, increased by 8.6% on year-on-year basis in February 2021 as compared to an increase of 5.0% in the previous month and 11.2% in February 2020. On month-on-month basis, it decreased by 2.3% in February 2021 as compared to a decrease of 0.2% in the previous month and a decrease of 1.1% in February 2020.
- CPI inflation Rural**, increased by 8.8% on year-on-year basis in February 2021 as compared to an increase of 6.6% in the previous month and 14.2% in February 2020. On month-on-month basis, it increased by 1.1% in February 2021 as compared to a decrease of 0.3% in the previous month and a decrease of 1.0% in February 2020.
- SPI inflation** on YoY increased by 11.9% in February 2021 as compared to an increase of 7.7% a month earlier and an increase of 14.5% in February 2020. On MoM basis, it increased by 3.1% in February 2021 as compared to a decrease of 0.8% a month earlier and a decrease of 0.8% in February 2020.
- WPI inflation** on YoY basis increased by 9.5% in February 2021 as compared to an increase of 6.4% a month earlier and an increase of 12.7% in February 2020. WPI inflation on MoM basis increased by 2.2% in February 2021 as compared to an increase of 2.5% a month earlier and a decrease of 0.7% in corresponding month i.e. February 2020.
- Figures 1 and 2 show graphically the yearly data of Table 1.a for Urban and Rural CPI while Table 1.1 shows "Period Average" and "YoY" percent changes in indices of three years.

Table 1.a General Inflation (%) (Base 2015-16)																		
PERIOD	CPI														SPI**		WPI	
	General						Food				Non-Food							
	National		Urban		Rural		Urban		Rural		Urban		Rural		YoY	MoM	YoY	MoM
	YoY	MoM	YoY	MoM	YoY	MoM	YoY	MoM	YoY	MoM	YoY	MoM	YoY	MoM				
June-19	8.0	0.5	8.1	0.3	7.9	0.7	7.5	-0.3	9.1	0.7	8.4	0.7	7.0	0.7	9.3	0.9	14.0	0.2
Jul-19	8.4	1.8	8.7	2.0	7.9	1.6	7.9	1.0	9.3	1.7	9.2	2.5	6.8	1.5	8.9	1.0	13.3	3.1
Aug-19	10.5	1.6	10.6	1.5	10.3	1.9	11.9	3.1	12.6	2.9	9.9	0.5	8.4	1.1	12.1	2.7	14.1	1.2
Sep-19	11.4	0.8	11.6	0.7	11.1	0.8	15.0	2.0	15.0	1.8	9.7	0.0	8.0	0.0	14.7	1.9	15.9	0.1
Oct-19	11.0	1.8	10.9	1.6	11.3	2.2	13.7	1.4	14.6	2.6	9.3	1.7	8.7	1.8	15.1	2.7	13.3	2.0
Nov-19	12.7	1.3	12.1	1.0	13.6	1.9	16.6	2.4	19.3	3.4	9.6	0.2	9.0	0.6	20.2	3.7	11.2	-0.8
Dec-19	12.6	-0.3	12.0	-0.4	13.6	-0.3	16.7	-1.7	19.7	-1.1	9.5	0.4	8.8	0.4	18.1	-2.0	12.4	-0.3
Jan-20	14.6	2.0	13.4	1.7	16.3	2.4	19.5	2.7	23.8	3.4	10.2	1.1	10.5	1.5	18.3	0.5	15.4	1.8
<b>Feb-20</b>	<b>12.4</b>	<b>-1.0</b>	<b>11.2</b>	<b>-1.1</b>	<b>14.2</b>	<b>-1.0</b>	<b>15.2</b>	<b>-1.4</b>	<b>19.7</b>	<b>-1.6</b>	<b>9.1</b>	<b>-0.9</b>	<b>9.8</b>	<b>-0.4</b>	<b>14.5</b>	<b>-0.8</b>	<b>12.7</b>	<b>-0.7</b>
Mar-20	10.2	0.0	9.3	0.1	11.7	-0.1	13.0	0.6	15.5	-0.3	7.3	-0.1	8.5	0.1	11.8	-0.3	9.3	-0.9
Apr-20	8.5	-0.8	7.7	-0.7	9.8	-1.1	10.4	-1.0	12.9	-1.7	6.2	-0.5	7.4	-0.5	9.3	-1.8	4.9	-2.0
May-20	8.2	0.3	7.3	0.3	9.7	0.3	10.6	1.5	13.7	1.4	5.4	-0.4	6.4	-0.5	11.0	2.2	1.5	-2.1
Jun-20	8.6	0.8	7.6	0.7	10.0	1.0	12.9	1.8	15.2	2.0	4.7	0.0	5.8	0.1	11.5	1.4	0.9	-0.3
July-20	9.3	2.5	7.8	2.2	11.6	3.0	15.1	3.0	17.8	4.0	3.9	1.7	6.5	2.2	13.7	3.0	3.2	5.4
Aug-20	8.2	0.6	7.1	0.8	9.9	0.4	11.3	-0.3	13.5	-0.9	4.8	1.5	6.8	1.5	11.7	0.9	3.3	1.3
Sep-20	9.0	1.5	7.7	1.3	11.1	2.0	12.4	3.0	15.8	3.8	5.0	0.2	7.2	0.3	12.0	2.1	4.3	1.0
Oct-20	8.9	1.7	7.3	1.3	11.3	2.4	13.9	2.8	17.7	4.3	3.6	0.3	5.8	0.5	12.3	3.0	5.1	2.9
Nov-20	8.3	0.8	7.0	0.6	10.5	1.1	13.0	1.6	16.1	2.0	3.4	0.1	5.5	0.2	9.9	1.1	5.0	-0.9
Dec-20	8.0	-0.7	7.0	-0.3	9.5	-1.2	12.6	-2.1	13.4	-3.4	3.8	0.7	6.1	1.0	9.1	-2.7	5.7	0.3
<b>Jan-20</b>	<b>5.7</b>	<b>-0.2</b>	<b>5.0</b>	<b>-0.2</b>	<b>6.6</b>	<b>-0.3</b>	<b>7.3</b>	<b>-2.1</b>	<b>7.2</b>	<b>-2.2</b>	<b>3.7</b>	<b>1.1</b>	<b>6.1</b>	<b>1.5</b>	<b>7.7</b>	<b>-0.8</b>	<b>6.4</b>	<b>2.5</b>
<b>Feb-21</b>	<b>8.7</b>	<b>1.8</b>	<b>8.6</b>	<b>2.3</b>	<b>8.8</b>	<b>1.1</b>	<b>10.3</b>	<b>1.3</b>	<b>9.1</b>	<b>0.2</b>	<b>7.6</b>	<b>2.8</b>	<b>8.6</b>	<b>2.0</b>	<b>11.9</b>	<b>3.1</b>	<b>9.5</b>	<b>2.2</b>

\*\* SPI for quintile 1. Digits 0.0\* are due to rounding off.

**Core inflation (NFNE)**

7. Measured by **non-food non-energy Urban** increased by 6.4% on (YoY) basis in February, 2021 as compared to an increase of 5.4% in the previous month and 8.0% in February, 2020. On (MoM) basis, it increased by 1.1% in February, 2021 as compared to increase of 0.9% in previous month, and an increase of 0.2% in corresponding month of last year i.e. February, 2020.
8. Measured by **non-food non-energy Rural** increased by 7.7% on (YoY) basis in February, 2021 as compared to an increase of 7.8% in the previous month and 9.4% in February, 2020. On (MoM) basis, it increased by 0.5% in February, 2021 as compared to an increase of 1.1% in previous month, and an increase of 0.5% in corresponding month of last year i.e. February, 2020.

**Core inflation (Trimmed)**

9. Measured by 20% **weighted trimmed mean Urban** increased by 7.9% on (YoY) basis in February, 2021 as compared to 5.7% in the previous month and 9.7% in February, 2020. On (MoM) basis, it increased by 1.0% in February, 2021 as compared to an increase of 1.0% in the previous month and an increase of 0.1% in corresponding month of last year i.e. February, 2020.
10. Measured by 20% **weighted trimmed mean Rural** increased by 9.2% on (YoY) basis in February, 2021 as compared to 8.1% in the previous month and by 12.8% in February, 2020. On (MoM) basis, it increased by 0.5% in February, 2021 as compared to an increase of 1.2% in the previous month and an increase of 0.6% in corresponding month of last year i.e. February, 2020.

**Table 1.b Core Inflation (%) (Base 2015-16)**

Period	NFNE				Trimmed			
	Urban		Rural		Urban		Rural	
	YoY	MoM	YoY	MoM	YoY	MoM	YoY	MoM
<b>Feb-20</b>	<b>8.0</b>	<b>0.2</b>	<b>9.4</b>	<b>0.5</b>	<b>9.7</b>	<b>0.1</b>	<b>12.8</b>	<b>0.6</b>
Mar-20	7.4	0.3	9.4	0.6	8.7	0.3	11.4	0.1
Apr-20	6.4	0.2	8.5	0.3	6.7	-0.2	9.3	-0.6
May-20	6.3	0.4	8.4	0.4	6.7	0.4	8.9	0.5
Jun-20	6.5	0.4	8.8	0.7	7.4	0.4	9.9	0.9
Jul-20	5.3	0.6	7.8	1.1	6.7	0.9	9.8	1.5
Aug-20	5.6	0.7	7.6	0.8	7.0	1.3	9.3	1.0
Sep-20	5.5	0.3	7.8	0.4	7.1	0.4	10.0	0.9
Oct-20	5.6	0.6	7.6	0.6	6.5	0.6	9.5	1.1
Nov-20	5.6	0.3	7.4	0.3	6.3	0.2	9.1	0.4
Dec-20	5.6	0.4	7.7	0.5	6.2	0.4	8.8	0.6
<b>Jan-20</b>	<b>5.4</b>	<b>0.9</b>	<b>7.8</b>	<b>1.1</b>	<b>5.7</b>	<b>1.0</b>	<b>8.1</b>	<b>1.2</b>
<b>Feb-21</b>	<b>6.4</b>	<b>1.1</b>	<b>7.7</b>	<b>0.5</b>	<b>7.9</b>	<b>1.0</b>	<b>9.2</b>	<b>0.5</b>

**Table 1.1 Period Average and Y-o-Y % Change**

INDEX	Average July- February % changes			February over February % changes		
	2020-2021	2019-2020	2018-2019	2020-2021	2019-2020	2018-2019
<b>CPI (National)</b>	8.25	11.71	6.00	8.70	12.40	6.75
<b>CPI(Urban)</b>	7.18	11.32	6.39	8.60	11.21	7.23
<b>CPI(Rural)</b>	9.87	12.31	5.42	8.85	14.22	6.02
<b>SPI</b>	11.05	15.25	2.74	11.95	14.52	7.17
<b>WPI</b>	5.32	13.49	15.95	9.51	12.68	13.93

Figure 1: Urban Inflation - YoY, Special Indices

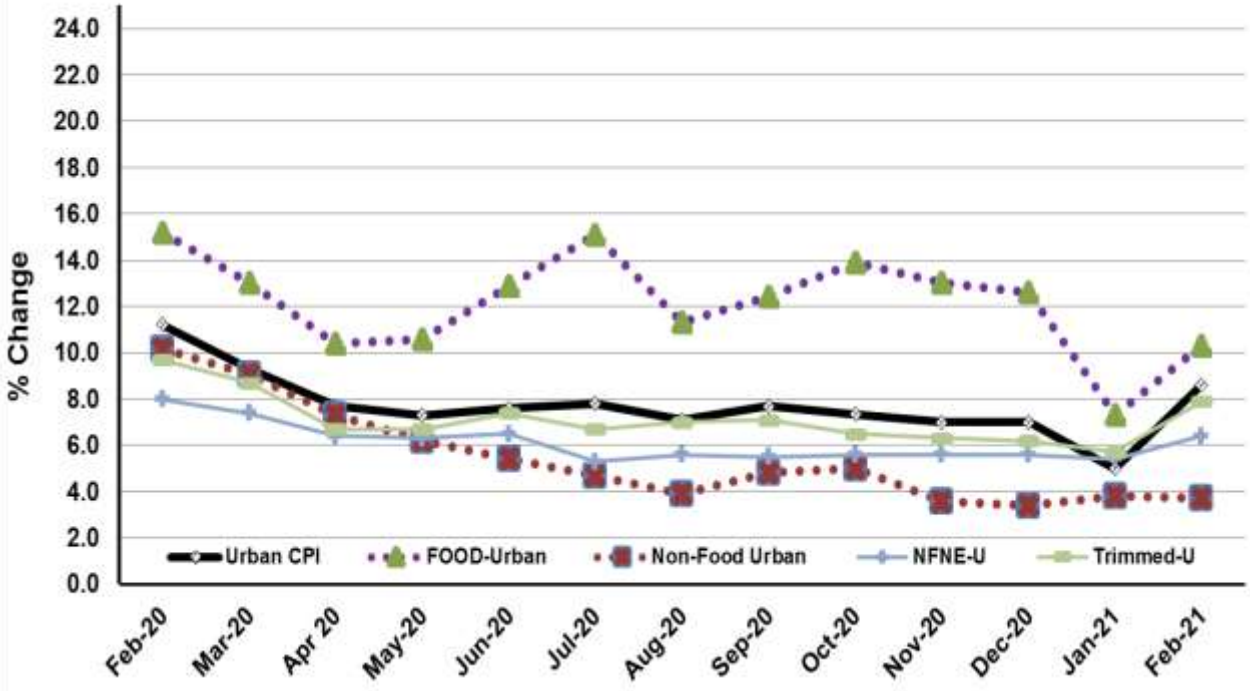


Figure 2: Rural Inflation - YoY, Special Indices

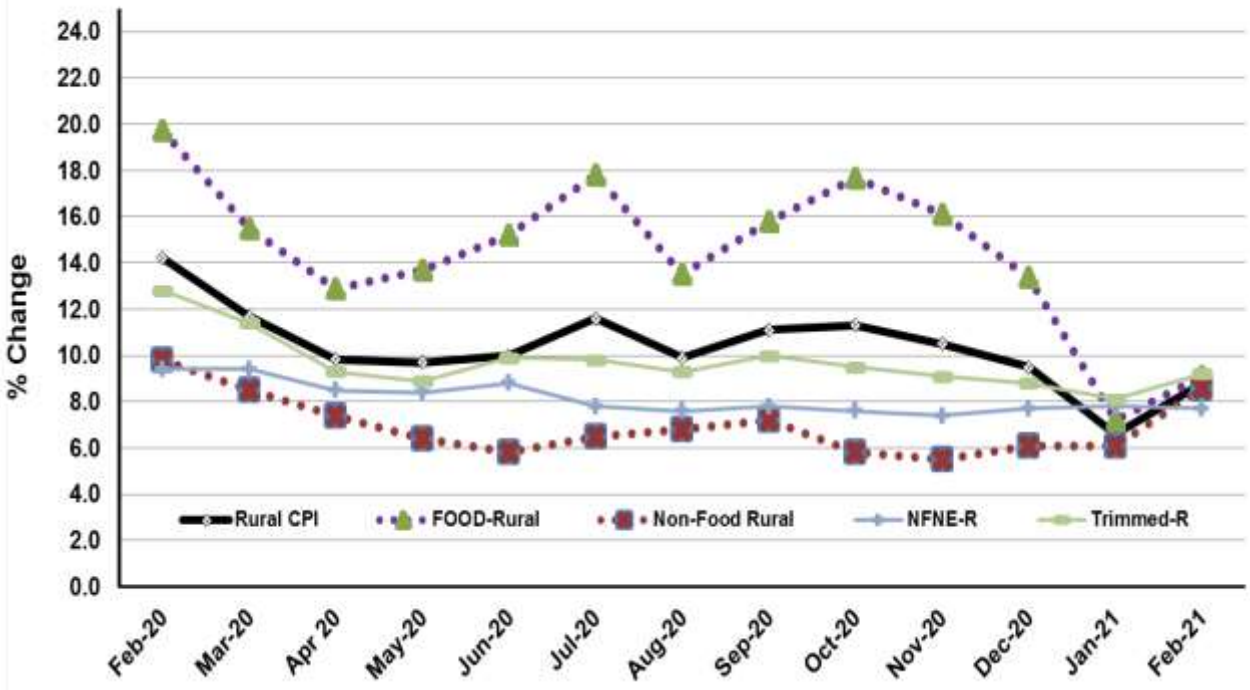


Figure 3: UCPI Inflation MoM, Special Indices

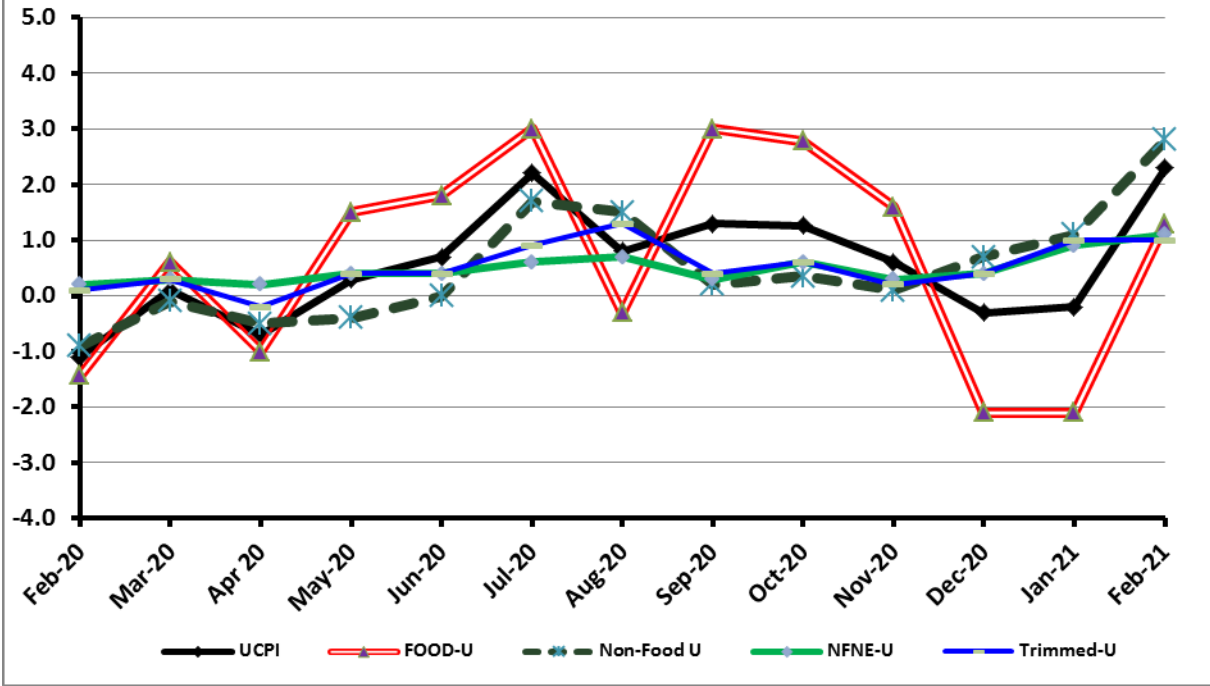


Figure 4: RPI Inflation MoM, Special Indices

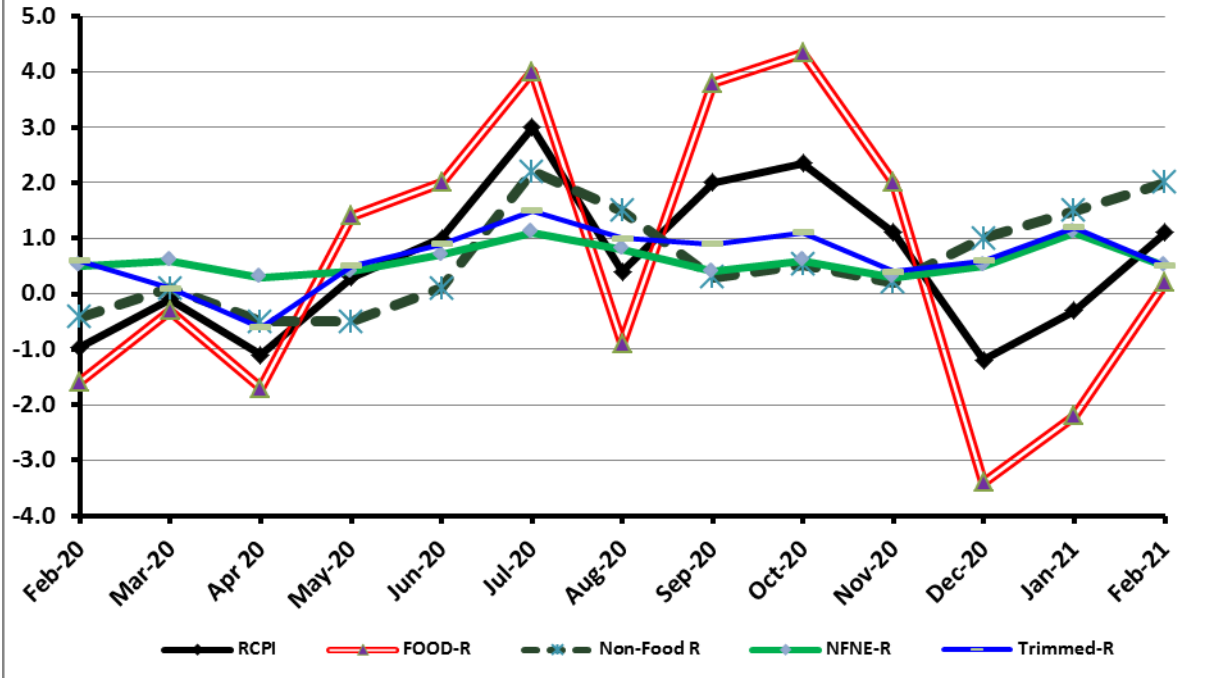


Figure 5: CPI Y.o.Y (National, Urban, Rural)

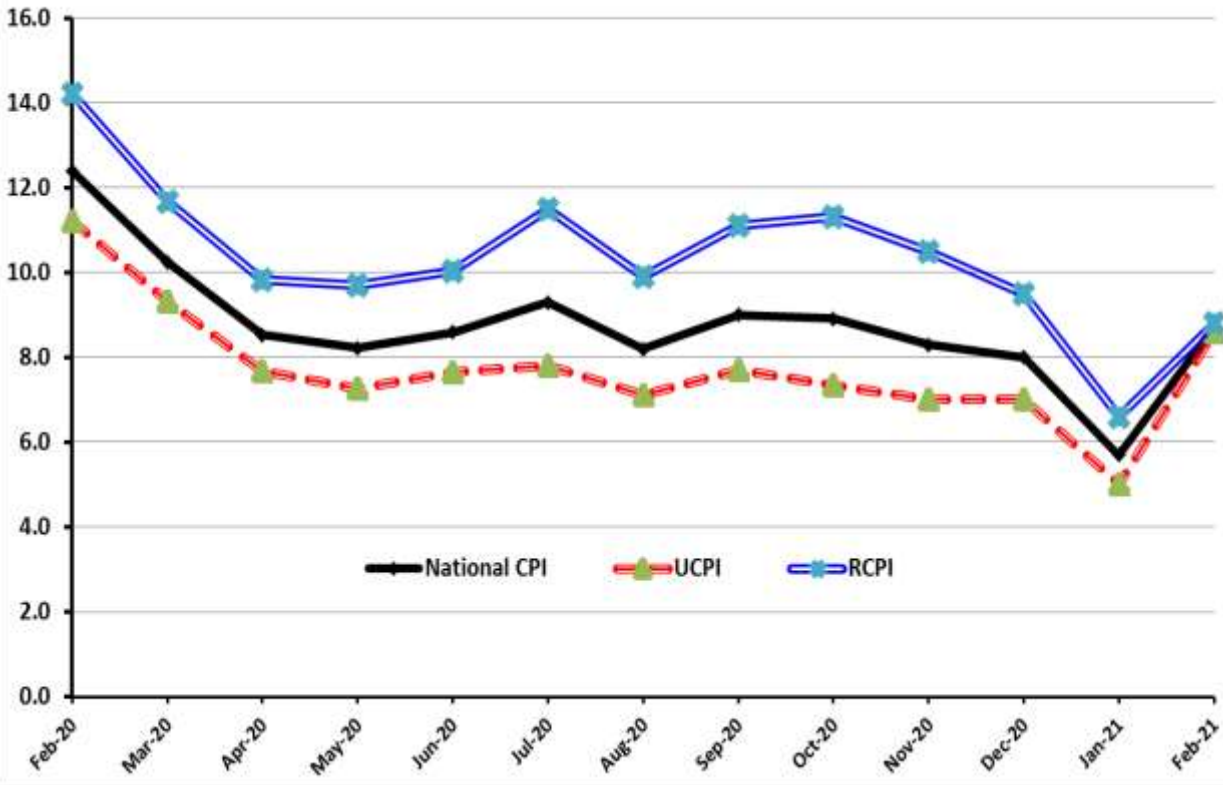
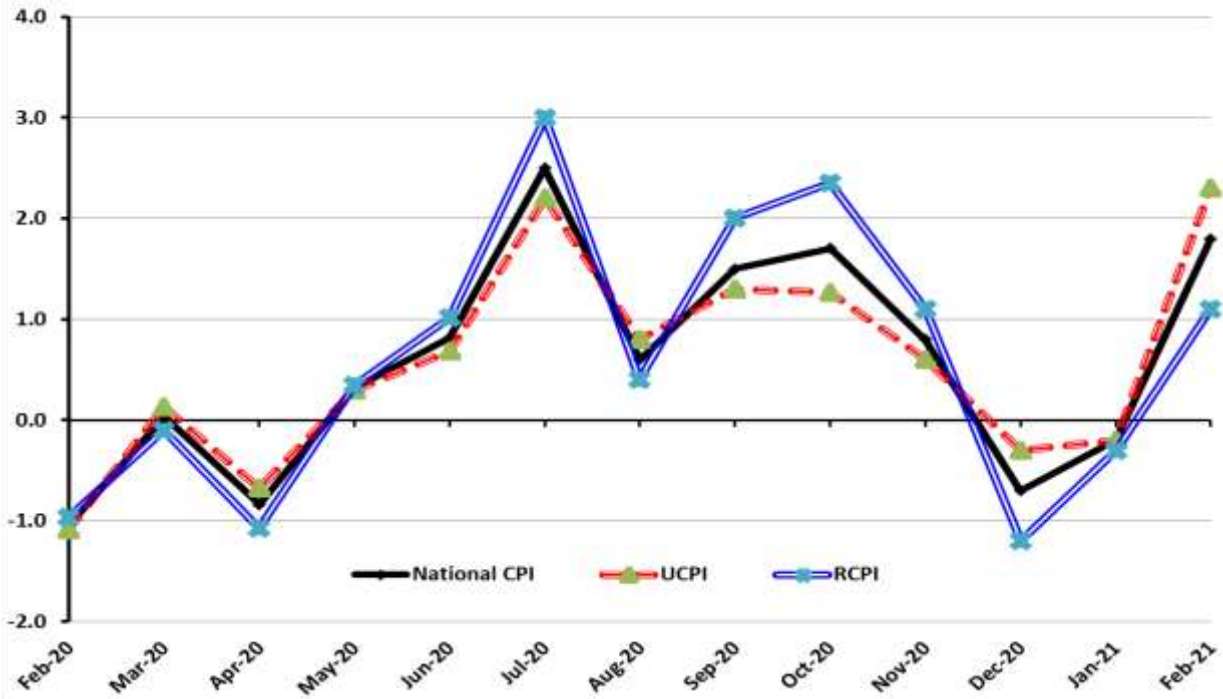


Figure 6: CPI M.o.M (National, Urban, Rural)



## I. National Consumer Price Index (N-CPI)

The **National Consumer Price Index** for **February 2021** is **increased** by **1.80%** over **January 2021** and increased by **8.70%** over corresponding month of the last year i.e. **February 2020**.

Table 1: Consumer Price Index (National) by Group of Commodities and Services (Base 2015-16)									
No	Group	Group Weight (%)	Indices			% Change Feb 2021 Over		Impact (In % points) Feb 2021 Over	
			Feb 2021	Jan 2021	Feb 2020	Jan 2021	Feb 2020	Jan 2021	Feb 2020
	<b>General</b>	<b>100.00</b>	<b>143.09</b>	<b>140.56</b>	<b>131.64</b>	<b>1.80</b>	<b>8.70</b>	<b>1.80</b>	<b>8.70</b>
1.	Food & Non-alcoholic Bev.	34.58	144.96	143.79	132.10	0.82	9.74	0.29	3.38
	<i>Non-perishable Food Items</i>	29.60	149.81	146.26	130.65	2.43	14.66	0.75	4.31
	<i>Perishable Food Items</i>	4.99	116.20	129.13	140.66	-10.01	-17.39	-0.46	-0.93
2.	Alcoholic Bev. & Tobacco	1.02	144.01	143.77	136.28	0.16	5.67	0.00	0.06
3.	Clothing & Footwear	8.60	145.49	142.14	130.68	2.36	11.34	0.21	0.97
4.	Housing, Water, Electricity, Gas & Fuels	23.63	142.85	136.89	129.11	4.35	10.64	1.00	2.47
5.	Furnishing & Household Equipment Maintenance	4.10	137.79	135.91	127.02	1.38	8.47	0.05	0.34
6.	Health	2.79	150.81	149.03	138.09	1.20	9.21	0.04	0.27
7.	Transport	5.91	144.19	141.48	145.60	1.92	-0.97	0.11	-0.06
8.	Communication	2.21	107.56	107.51	106.96	0.05	0.56	0.00	0.01
9.	Recreation & Culture	1.59	124.73	124.41	119.03	0.25	4.79	0.00	0.07
10.	Education	3.79	143.83	143.81	142.11	0.02	1.22	0.00	0.05
11.	Restaurants & Hotels	6.92	140.23	139.66	129.86	0.41	7.99	0.03	0.55
12.	Miscellaneous	4.87	150.88	148.93	134.42	1.31	12.24	0.07	0.61



## II. Urban Consumer Price Index (UCPI)

The Urban Consumer Price Index of February 2021 is increased by **2.27%** over January 2021 and increased by **8.60%** over corresponding month of the last year i.e. February 2020.

Table 2: Consumer Price Index (Urban) by Group of Commodities and Services (Base 2015-16)

No	Group	Group Weight (%)	Indices			% Change Feb 2021 Over		Impact (In % points) Feb 2021 Over	
			Feb 2021	Jan 2021	Feb 2020	Jan 2021	Feb 2020	Jan 2021	Feb 2020
	<b>General</b>	<b>100.00</b>	<b>142.61</b>	<b>139.45</b>	<b>131.32</b>	<b>2.27</b>	<b>8.60</b>	<b>2.27</b>	<b>8.60</b>
1.	Food & Non-alcoholic Bev.	30.42	143.95	141.87	130.25	1.47	10.52	0.45	3.17
	Non-perishable Food Items	25.97	148.53	144.08	128.74	3.09	15.37	0.83	3.91
	Perishable Food Items	4.46	117.22	128.98	139.02	-9.12	-15.68	-0.38	-0.74
2.	Alcoholic Bev.& Tobacco	0.85	152.48	152.14	143.51	0.22	6.25	0.00	0.06
3.	Clothing & Footwear	8.01	143.58	137.97	127.81	4.07	12.34	0.32	0.96
4.	Housing, Water, Electricity, Gas & Fuels	27.03	143.34	137.52	130.34	4.23	9.97	1.13	2.68
5.	Furnishing & Household Equip. & Maintenance	4.09	137.06	134.95	127.57	1.56	7.44	0.06	0.30
6.	Health	2.31	150.26	148.06	138.29	1.49	8.66	0.04	0.21
7.	Transport	6.14	145.36	142.26	146.55	2.18	-0.81	0.14	-0.06
8.	Communication	2.35	108.95	108.87	108.22	0.07	0.67	0.00	0.01
9.	Recreation & Culture	1.73	121.56	121.14	117.38	0.35	3.56	0.01	0.06
10.	Education	4.88	146.26	146.25	144.71	0.01	1.07	0.00	0.06
11.	Restaurants & Hotels	7.41	139.00	138.39	128.88	0.44	7.85	0.03	0.57
12.	Miscellaneous	4.77	150.08	147.67	134.20	1.63	11.83	0.08	0.58

Main contributors to month-on-month and year-on-year percentage changes are given below and detail is given in **Annexure-A**.

### 1. **MONTH-ON-MONTH** Top few commodities which varied from previous month are given below: -

#### **FOOD**

**Increased:** Chicken (37.01%), Cooking oil (11.92%), Fruits (9.26%), Vegetable ghee (9.03%), Condiments and Spices (5.50%), Pulse gram (4.48%), Mustard oil (3.80%), Pulse masoor (3.28%), Pulse mash (2.62%) and Rice (1.20%).

**Decreased:** Tomatoes (58.70%), Potatoes (12.92%), Eggs (10.38%), Onions (7.88%) and Vegetables (7.35%).

#### **NON-FOOD**

**Increased:** Electricity charges (29.45%), Foot ware (14.66%), Ready-made garments (2.93%), Cotton cloth (2.52%), Hosiery (1.97%) and Motor fuel (1.64%).

**Decreased:** Liquefied Hydrocarbons (3.94%).

### 2. **YEAR-ON-YEAR:** Top few commodities which varied from previous year i.e. February, 2020 are given below: -

#### **FOOD**

**Increased:** Eggs (48.10%), Chicken (36.33%), Condiments and Spices (31.13%), Wheat (23.79%), Mustard oil (22.71%), Beans (17.34%), Vegetable ghee (17.27%), Sugar (17.16%), Cooking oil (15.39%), Milk (14.65%) and Wheat flour bag (13.51%).

**Decreased:** Onions (29.72%), Tomatoes (29.49%), Vegetables (22.58%) and Fish (7.37%).

#### **NON-FOOD**

**Increased:** Electricity charges (43.06%), Foot ware (22.99%), Personal Effects (16.46%), Cotton cloth (14.70%), Cleaning and laundering (13.13%) and Woollen ready-made garments (11.21%).

**Decreased:** Motor fuel (5.25%) and Liquefied Hydrocarbons (2.30%).

### III. Rural Consumer Price Index (RCPI)

The Rural Consumer Price Index of February 2021 is increased by 1.12% over January 2021 and increased by 8.85% over corresponding month of the last year i.e. February 2020.

**Table 3: Consumer Price Index (Rural) by Group of Commodities and Services (Base 2015-16)**

No	Group	Group Weight (%)	Indices			% Change Feb 2021 Over		Impact (In % points) Feb 2021 Over	
			Feb 2021	Jan 2021	Feb 2020	Jan 2021	Feb 2020	Jan 2021	Feb 2020
	<b>General</b>	100.00	143.82	142.23	132.13	1.12	8.85	1.12	8.85
1.	Food & Non-alcoholic Bev.	40.87	146.10	145.94	134.17	0.11	8.89	0.05	3.69
	Non-perishable Food Items	35.08	151.23	148.69	132.79	1.71	13.89	0.63	4.90
	Perishable Food Items	5.79	115.02	129.31	142.56	-11.05	-19.32	-0.58	-1.21
2.	Alcoholic Bev. & Tobacco	1.28	135.46	135.33	128.99	0.10	5.02	0.00	0.06
3.	Clothing & Footwear	9.48	147.93	147.45	134.33	0.33	10.12	0.03	0.98
4.	Housing, Water, Electricity, Gas & Fuels	18.49	141.76	135.50	126.39	4.62	12.16	0.81	2.15
5.	Furnishing & Household Equip. & Maintenance	4.10	138.88	137.36	126.20	1.11	10.05	0.04	0.39
6.	Health	3.51	151.36	149.99	137.89	0.91	9.77	0.03	0.36
7.	Transport	5.56	142.24	140.17	144.02	1.48	-1.24	0.08	-0.07
8.	Communication	1.99	105.08	105.08	104.72	0.00	0.34	0.00	0.01
9.	Recreation & Culture	1.38	130.73	130.62	122.15	0.08	7.02	0.00	0.09
10.	Education	2.13	135.46	135.37	133.12	0.07	1.76	0.00	0.04
11.	Restaurants & Hotels	6.19	142.46	141.96	131.63	0.35	8.23	0.02	0.51
12.	Miscellaneous	5.02	152.02	150.73	134.74	0.86	12.82	0.05	0.66

Main contributors to Month-on-Month and Year-on-Year percentage changes are given below and detail is given in **Annexure-B**.

#### 1. MONTH-ON-MONTH Top few commodities which varied from previous month are given below: -

##### FOOD

**Increased:** Chicken (31.54%), Fruits (9.92%), Vegetable ghee (7.05%), Cooking oil (5.58%), Mustard oil (3.76%), Pulse Gram (2.46%), Pulse Masoor (1.57%), Pulse Moong (1.18%), Rice (1.18%) and Pulse Mash (1.01%).

**Decreased:** Tomatoes (56.33%), Eggs (18.41%), Potatoes (17.48%), Onions (8.30%), Vegetables (6.00%) and Wheat Flour (1.10%).

##### NON-FOOD

**Increased:** Electricity Charges (29.45%), Motor Fuels (1.60%), Motor Vehicles (1.44%) and Drugs & Medicines (1.11%).

**Decreased:** Liquefied Hydrocarbons (3.01%) and Construction Input Items (1.57%).

#### YEAR-ON-YEAR: Top few commodities which varied from previous year i.e. February 2020 are given below: -

##### FOOD

**Increased:** Eggs (35.81%), Chicken (27.28%), Condiments and Spices (24.18%), Wheat (23.14%), Mustard oil (20.16%), Cooking oil (18.95%), Vegetable ghee (18.17%), Wheat Flour (16.58%) and Sugar (15.13%).

**Decreased:** Tomatoes (34.33%), Onions (30.24%), Vegetables (26.45%) and Potatoes (10.14%).

##### NON-FOOD

**Increased:** Electricity Charges (43.06%), Hosiery (20.19%), Personal Effects (17.29%), Plastic Products (13.19%), Cleaning and Laundering (11.87%) and Cotton Cloth (11.67%).

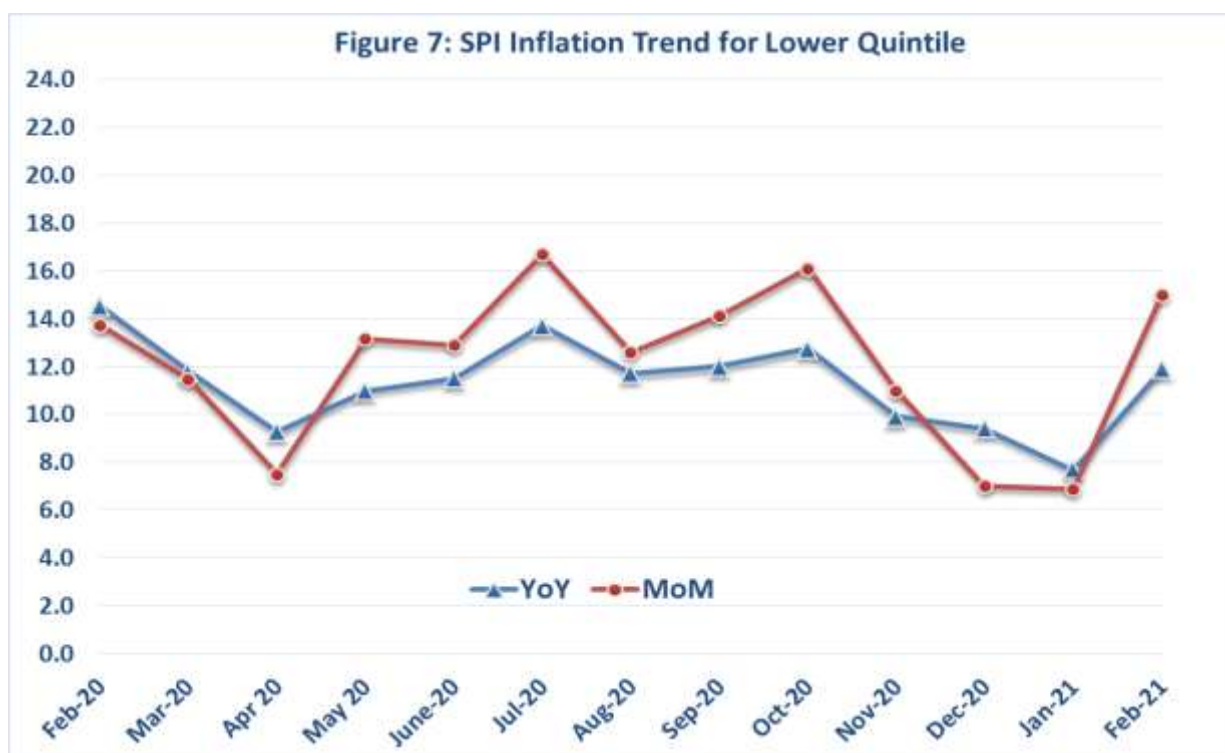
**Decreased:** Liquefied Hydrocarbons (6.91%) and Motor Fuels (5.43%).

#### IV. Sensitive Price Indicator

Quintile-wise percentage changes YoY and MoM are given below in Table 4. The series from February 2020 to February 2021 is also graphed below in Figure 7.

Table 4: Sensitive Price Indicator (Base 2015-16)					
Quintiles	Indices			% Change February 2021 Over	
	February 2021	January 2021	February 2020	January 2021	February 2020
1	149.65	145.09	133.68	3.14	11.95
2	144.23	140.35	129.28	2.76	11.56
3	145.58	142.24	131.40	2.35	10.79
4	142.21	139.14	128.62	2.21	10.57
5	144.22	141.10	132.44	2.21	8.89
<b>Combined</b>	143.57	140.08	130.45	2.49	10.06

Table 4.1 : Weekly Percentage Change of SPI During February - 2021				
Quintiles	% Change with Previous week			
	04-02-2021	11-02-2021	18-02-2021	25-02-2021
Quintile 1	0.52	0.77	0.55	6.65
Combined	0.58	0.81	0.55	2.41



## V. Wholesale Price Index

The Wholesale Price Index for February, 2021 increased by **2.20%** over January 2021. It increased by **9.51%** over the corresponding month of the last year. YoY and MoM movements, from February, 2020 to February, 2021 are also graphed below in Figure 8.

**Table 5: Wholesale Price Index by Group of Commodities (Base 2015-16)**

No	Group	Group Weight (%)	Indices			% Change Feb 2021 Over		Impact (In % points) Feb 2021 Over	
			Feb 2021	Jan 2021	Feb 2020	Jan 2021	Feb 2020	Jan 2021	Feb 2020
	<b>General</b>	<b>100.00</b>	156.90	153.53	143.27	2.20	9.51	2.20	9.51
1	Agriculture Forestry & Fishery	25.77	157.51	154.41	140.02	2.01	12.49	0.52	3.15
2	Ores/Minerals, Elec., Gas & Water	12.01	173.73	169.13	162.59	2.72	6.85	0.36	0.93
3	Food, Beverages, Tobacco, Textiles, Leather	31.11	149.26	147.49	132.60	1.20	12.56	0.36	3.62
	i. Food Products, Beverages & Tobacco	20.07	150.34	147.69	128.22	1.79	17.25	0.35	3.10
	ii. Textiles & Apparels	10.33	149.20	149.05	142.53	0.10	4.68	0.01	0.48
	iii. Leather Products	0.71	119.35	119.35	111.94	0.00	6.62	0.00	0.04
4	Other Transportable Goods	22.40	158.02	151.47	155.06	4.32	1.91	0.96	0.46
5	Metal Product, Machinery & Equipment	8.72	156.36	156.32	134.03	0.03	16.66	0.00	1.36

Main contributors to month-on-month and year-on-year percentage changes are given below and detail is given in Annexure C.

### 1. MONTH-ON-MONTH Top few commodities which varied from previous month are given below: -

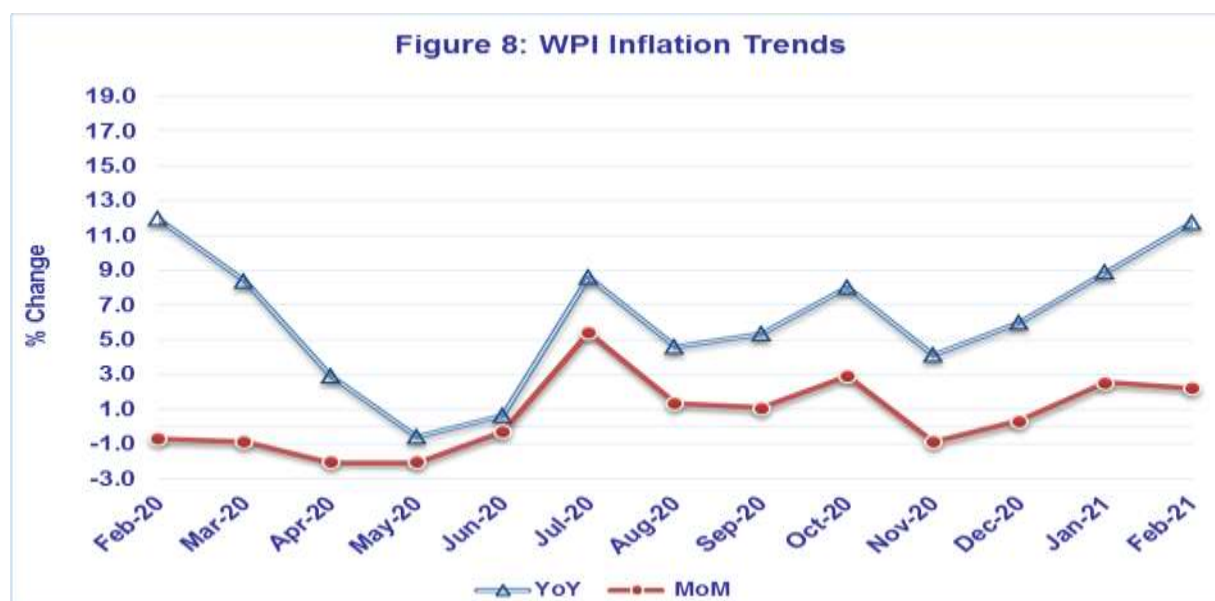
**Increased:** Poultry (39.64%), Fruits (16.03%), Furnace Oil (10.82%), Vegetable Oils Refined (8.33%), Cereal Flour (7.55%), Electrical Energy (7.32%), Kerosene Oil (6.71%), Spices (6.52%), Woven Fabrics (5.45%), Diesel (4.91%), Pulses (4.32%), Fertilizers (4.13%), Sugar (1.89%) and Motor Spirit (1.73%).

**Decreased:** Potatoes (12.63%), Vegetables (9.2%), Eggs (6.72%), Maize (3.99%), Stimulant & Spice Crops (2.05%) and Steel Bar & Sheets (1.98%).

### 2. YEAR-ON-YEAR Top few commodities which varied from previous year i.e. February, 2020 are given below: -

**Increased:** Spices (133.49%), Eggs (57.53%), Poultry (36.9%), Timber (36.5%), Unmanufactured Tobacco (34.75%), Bajra (34.62%), Jowar (33.5%), Cotton Fabrics (31.79%), Wheat (30.7%), Pesticides (27.64%), Vegetable Oils Refined (24.84%), Footwear's (22.26%), Vegetable Ghee (21.86%), Wheat Flour (19.25%), Sugar (17.34%), Maize (17.10%), Rice (16.94%), Meat (16.64%) and Electric Wires (15.05%).

**Decreased:** Vegetables (31.54%), Kerosene Oil (19.37%), Potatoes (19.19%), Stimulant & Spice Crops (10.05%), Diesel Oil (7.53%) and Motor Spirit (6.57%).



**Annexure A:CPI (Urban) Index Numbers by Commodity Groups & Commodities (2015-16=100)**

Item and Specification	Weight	Index Numbers			% Change in Feb 2021 over	
		Feb 21	Jan 21	Feb 20	Jan 2021	Feb 2020
<b>General</b>	<b>100.0000</b>	<b>142.61</b>	<b>139.45</b>	<b>131.32</b>	<b>+ 2.27</b>	<b>+ 8.60</b>
<b>Food and non-alcoholic Bevera</b>	<b>30.4215</b>	<b>143.95</b>	<b>141.87</b>	<b>130.25</b>	<b>+ 1.47</b>	<b>+ 10.52</b>
01 Wheat	0.6120	169.26	168.98	136.73	+ 0.17	+ 23.79
02 Wheat flour	3.0075	137.04	136.70	120.73	+ 0.25	+ 13.51
03 Wheat products	0.0936	159.51	154.97	124.81	+ 2.93	+ 27.80
04 Besan	0.0830	124.15	121.77	126.13	+ 1.95	- 1.57
05 Rice	1.1804	140.17	138.51	131.69	+ 1.20	+ 6.44
06 Bakery and confectionary	0.4770	142.89	142.16	125.69	+ 0.51	+ 13.68
07 Nimco	0.1224	140.68	137.11	122.87	+ 2.60	+ 14.49
08 Meat	2.0411	156.32	155.97	142.13	+ 0.22	+ 9.98
09 Chicken	1.3631	162.15	118.35	118.94	+ 37.01	+ 36.33
10 Fish	0.3855	117.48	118.09	126.83	- 0.52	- 7.37
11 Milk fresh	7.1070	138.15	137.63	120.50	+ 0.38	+ 14.65
12 Milk products	0.6407	140.60	140.25	123.00	+ 0.25	+ 14.31
13 Milk powder	0.3106	135.37	135.28	127.12	+ 0.07	+ 6.49
14 Eggs	0.5083	170.45	190.20	115.09	- 10.38	+ 48.10
15 Butter	0.0932	191.73	191.20	163.19	+ 0.28	+ 17.49
16 Mustard oil	0.0120	151.61	146.06	123.55	+ 3.80	+ 22.71
17 Cooking oil	1.1016	169.33	151.30	146.75	+ 11.92	+ 15.39
18 Vegetable ghee	1.0324	177.75	163.03	151.57	+ 9.03	+ 17.27
19 Dry fruits	0.3299	144.97	145.49	133.88	- 0.36	+ 8.28
20 Fresh fruits	1.4363	118.59	108.54	120.53	+ 9.26	- 1.61
21 Pulse masoor	0.1624	107.27	103.86	97.16	+ 3.28	+ 10.41
22 Pulse moong	0.1697	148.35	147.57	143.92	+ 0.53	+ 3.08
23 Pulse mash	0.1152	108.18	105.42	96.90	+ 2.62	+ 11.64
24 Pulse gram	0.1660	121.54	116.33	129.03	+ 4.48	- 5.80
25 Gram whohe	0.0912	126.44	124.15	129.28	+ 1.84	- 2.20
26 Beans	0.0408	159.22	156.81	135.69	+ 1.54	+ 17.34
27 Potatoes	0.4496	149.52	171.71	156.74	- 12.92	- 4.61
28 Onions	0.5928	89.05	96.67	126.70	- 7.88	- 29.72
29 Tomatoes	0.3459	70.28	170.19	99.67	- 58.70	- 29.49
30 Fresh vegetables	1.5306	120.99	130.59	156.27	- 7.35	- 22.58
31 Sugar	1.1130	151.01	149.69	128.89	+ 0.88	+ 17.16
32 Gur	0.0379	146.10	143.28	137.37	+ 1.97	+ 6.36
33 Honey	0.1017	131.01	130.72	118.40	+ 0.22	+ 10.65
34 Sweetmeat	0.3535	149.71	148.82	137.53	+ 0.60	+ 8.86
35 Ice cream	0.1044	136.57	136.35	125.04	+ 0.16	+ 9.22
36 Condiments and Spices	1.3340	208.66	197.79	159.13	+ 5.50	+ 31.13
37 Dessert preparation	0.0419	130.81	127.16	118.96	+ 2.87	+ 9.96
38 Tea	0.8427	140.83	140.74	140.74	+ 0.06	+ 0.06
39 Beverages	0.8906	128.11	128.02	122.25	+ 0.07	+ 4.79
<b>Alcoholic Beverages, Tobacco</b>	<b>0.8540</b>	<b>152.48</b>	<b>152.14</b>	<b>143.51</b>	<b>+ 0.22</b>	<b>+ 6.25</b>
40 Cigarettes	0.7167	141.06	141.02	134.72	+ 0.03	+ 4.71
41 Pan prepared	0.1373	212.12	210.17	189.39	+ 0.93	+ 12.00
<b>Clothing and footwear</b>	<b>8.0096</b>	<b>143.58</b>	<b>137.97</b>	<b>127.81</b>	<b>+ 4.07</b>	<b>+ 12.34</b>
42 Cotton cloth	2.2227	146.62	143.01	127.83	+ 2.52	+ 14.70
43 Woolen cloth	0.8361	138.84	137.04	125.76	+ 1.31	+ 10.40
44 Readymade garments	1.3196	137.48	133.57	128.66	+ 2.93	+ 6.86
45 Woolen readymade garments	0.4307	141.11	141.04	126.89	+ 0.05	+ 11.21
46 Tailoring	1.0741	142.93	142.46	136.79	+ 0.33	+ 4.49
47 Hosiry	0.4070	140.98	138.26	127.40	+ 1.97	+ 10.66
48 Dopatta	0.1713	127.73	127.61	122.87	+ 0.09	+ 3.96
49 Cleaning and laundring	0.0665	147.53	146.87	130.41	+ 0.45	+ 13.13
50 Footware	1.4816	150.67	131.41	122.51	+ 14.66	+ 22.99
<b>Housing, water, Elec., Gas an</b>	<b>27.0332</b>	<b>143.34</b>	<b>137.52</b>	<b>130.34</b>	<b>+ 4.23</b>	<b>+ 9.97</b>
51 House rent	19.2558	135.86	135.86	129.68	+ 0.00	+ 4.77
52 Construcion input items	0.3765	149.66	149.44	142.64	+ 0.15	+ 4.92
53 Construction wage rates	0.2025	154.26	153.39	147.66	+ 0.57	+ 4.47
54 Water supply	0.5269	157.86	157.86	131.89	+ 0.00	+ 19.69
55 Garbage collection	0.1064	173.35	173.35	154.80	+ 0.00	+ 11.98
56 Electricity charges	4.5562	154.56	119.40	108.04	+ 29.45	+ 43.06
57 Gas charges	1.0807	216.94	216.94	216.94	+ 0.00	+ 0.00
58 Liquified Hydrocarbons	0.5064	157.19	163.64	160.89	- 3.94	- 2.30
59 Solid Fuel	0.4218	121.73	121.54	115.58	+ 0.16	+ 5.32

**Annexure A:CPI (Urban) Index Numbers by Commodity Groups & Commodities (2015-16=100)**

Item and Specification	Weight	Index Numbers			% Change in Feb 2021 over			
		Feb 21	Jan 21	Feb 20	Jan 2021	Feb 2020		
<b><i>Furnishing and household equi</i></b>	<b>4.0937</b>	<b>137.06</b>	<b>134.95</b>	<b>127.57</b>	<b>+</b>	<b>1.56</b>	<b>+</b>	<b>7.44</b>
60 Furniture and furnishing	0.4750	139.84	139.61	128.23	+	0.16	+	9.05
61 Carpets	0.0308	112.80	112.80	110.97	+	0.00	+	1.65
62 Household textiles	0.3420	134.43	133.54	125.08	+	0.67	+	7.48
63 Household equipments	1.0032	136.47	134.03	125.99	+	1.82	+	8.32
64 Plastic products	0.0536	120.73	120.09	116.63	+	0.53	+	3.52
65 Major tools & equipments	0.0084	137.05	135.02	119.93	+	1.50	+	14.27
66 Washing soap/detergents/match	1.4112	139.71	135.69	128.04	+	2.96	+	9.11
67 Household servant	0.7695	134.55	134.48	130.96	+	0.05	+	2.74
<b><i>Health</i></b>	<b>2.3098</b>	<b>150.26</b>	<b>148.06</b>	<b>138.29</b>	<b>+</b>	<b>1.49</b>	<b>+</b>	<b>8.66</b>
68 Drugs and medicines	1.0735	149.64	146.90	138.19	+	1.87	+	8.29
69 Therapeutic Appliances and Eq	0.0054	116.20	115.16	107.17	+	0.90	+	8.43
70 Doctor (MBBS) clinic fee	0.4044	189.71	186.63	163.48	+	1.65	+	16.04
71 Dental services	0.0156	126.85	124.53	116.23	+	1.86	+	9.14
72 Medical tests	0.2367	132.69	131.84	124.15	+	0.64	+	6.88
73 Hospitals services	0.5742	131.81	130.70	127.47	+	0.85	+	3.40
<b><i>Transport</i></b>	<b>6.1368</b>	<b>145.36</b>	<b>142.26</b>	<b>146.55</b>	<b>+</b>	<b>2.18</b>	<b>-</b>	<b>0.81</b>
74 Motor vehicles	0.8097	153.75	152.30	146.45	+	0.95	+	4.98
75 Motor vehicle accessories	0.1941	137.86	137.86	127.55	+	0.00	+	8.08
76 Motor fuel	2.9088	153.46	150.99	161.97	+	1.64	-	5.25
77 Mechanical services	0.4290	136.53	136.24	129.02	+	0.21	+	5.82
78 Motor vehicle tax	0.0482	126.72	126.72	126.72	+	0.00	+	0.00
79 Transport services	1.7470	131.49	125.47	127.89	+	4.80	+	2.81
<b><i>Communication</i></b>	<b>2.3536</b>	<b>108.95</b>	<b>108.87</b>	<b>108.22</b>	<b>+</b>	<b>0.07</b>	<b>+</b>	<b>0.67</b>
80 Postal services	0.0190	161.25	151.88	147.05	+	6.17	+	9.66
81 Communication apparatus	0.4524	119.48	119.48	118.73	+	0.00	+	0.63
82 Communication Services	1.8822	105.89	105.89	105.30	+	0.00	+	0.56
<b><i>Recreation and culture</i></b>	<b>1.7301</b>	<b>121.56</b>	<b>121.14</b>	<b>117.38</b>	<b>+</b>	<b>0.35</b>	<b>+</b>	<b>3.56</b>
83 Recreation and culture	0.6478	112.73	112.16	108.80	+	0.51	+	3.61
84 Text books	0.6655	120.80	120.80	117.06	+	0.00	+	3.19
85 Newspapers	0.0716	151.55	151.55	151.55	+	0.00	+	0.00
86 stationery	0.3452	133.38	132.33	126.99	+	0.79	+	5.03
<b><i>Education</i></b>	<b>4.8807</b>	<b>146.26</b>	<b>146.25</b>	<b>144.71</b>	<b>+</b>	<b>0.01</b>	<b>+</b>	<b>1.07</b>
87 Education	4.8807	146.26	146.25	144.71	+	0.01	+	1.07
<b><i>Restaurants and hotels</i></b>	<b>7.4050</b>	<b>139.00</b>	<b>138.39</b>	<b>128.88</b>	<b>+</b>	<b>0.44</b>	<b>+</b>	<b>7.85</b>
88 Readymade food	5.5235	140.08	139.43	127.90	+	0.47	+	9.52
89 Marriage Hall Charges	1.7514	137.52	136.99	133.19	+	0.39	+	3.25
90 Accommodation Services	0.1301	113.20	113.20	112.40	+	0.00	+	0.71
<b><i>Misc. goods and services</i></b>	<b>4.7720</b>	<b>150.08</b>	<b>147.67</b>	<b>134.20</b>	<b>+</b>	<b>1.63</b>	<b>+</b>	<b>11.83</b>
91 Personal Grooming Services	0.8001	136.73	136.72	124.19	+	0.01	+	10.10
92 Electrical Appliances for Per	0.0465	118.43	118.43	116.78	+	0.00	+	1.41
93 Appliances/Articles/Products	2.9807	139.84	135.37	126.55	+	3.30	+	10.50
94 Personal Effects n.e.c.	0.9447	195.25	197.20	167.65	-	0.99	+	16.46

**Annexure B:CPI (Rural) Index Numbers by Commodity Groups & Commodities (2015-16=100)**

Item and Specification	Weight	Index Numbers			% Change in Feb 2021 over			
		Feb 21	Jan 21	Feb 20	Jan 2021	Feb 2020		
<b>General</b>	<b>100.0000</b>	<b>143.82</b>	<b>142.23</b>	<b>132.13</b>	<b>+</b>	<b>1.12</b>	<b>+</b>	<b>8.85</b>
<b>Food and non-alcoholic Beverage</b>	<b>40.8668</b>	<b>146.10</b>	<b>145.94</b>	<b>134.17</b>	<b>+</b>	<b>0.11</b>	<b>+</b>	<b>8.89</b>
01 Wheat	3.4736	174.22	173.11	141.48	+	0.64	+	23.14
02 Wheat Flour	3.4297	143.79	145.39	123.34	-	1.10	+	16.58
03 Wheat Products	0.1068	148.30	149.59	124.91	-	0.86	+	18.73
04 Besan	0.0728	124.31	123.27	132.22	+	0.84	-	5.98
05 Rice	1.5501	183.85	181.70	161.03	+	1.18	+	14.17
06 Bakery and Confectionary	0.3702	142.01	142.01	124.81	+	0.00	+	13.78
07 Nimco	0.0774	129.01	129.01	116.83	+	0.00	+	10.43
08 Meat	1.7146	157.46	156.90	142.49	+	0.36	+	10.51
09 Chicken	1.4641	165.20	125.59	129.79	+	31.54	+	27.28
10 Fish	0.2640	126.83	125.92	125.71	+	0.72	+	0.89
11 Milk fresh	10.3803	132.29	131.92	122.63	+	0.28	+	7.88
12 Milk products	0.9624	130.85	129.87	124.29	+	0.75	+	5.28
13 Milk powder	0.1062	127.72	127.19	121.90	+	0.42	+	4.77
14 Eggs	0.5665	160.80	197.09	118.40	-	18.41	+	35.81
15 Butter	0.3333	144.60	144.40	127.23	+	0.14	+	13.65
16 Mustard oil	0.0136	155.13	149.51	129.10	+	3.76	+	20.16
17 Cooking oil	0.6011	181.37	171.79	152.48	+	5.58	+	18.95
18 Vegetable ghee	2.3764	187.85	175.48	158.97	+	7.05	+	18.17
19 Dry fruits	0.2496	156.03	156.19	138.70	-	0.10	+	12.49
20 Fresh fruits	1.4505	118.07	107.41	119.31	+	9.92	-	1.04
21 Pulse Masoor	0.2076	113.32	111.57	103.44	+	1.57	+	9.55
22 Pulse Moong	0.2510	157.37	155.53	155.08	+	1.18	+	1.48
23 Pulse Mash	0.1465	108.48	107.40	98.70	+	1.01	+	9.91
24 Pulse Gram	0.2751	122.25	119.32	128.91	+	2.46	-	5.17
25 Gram Whole	0.1116	120.44	119.14	127.67	+	1.09	-	5.66
26 Beans	0.0896	166.83	165.47	145.24	+	0.82	+	14.87
27 Potatoes	0.7437	150.54	182.42	167.52	-	17.48	-	10.14
28 Onions	0.8965	82.79	90.28	118.67	-	8.30	-	30.24
29 Tomatoes	0.5069	73.63	168.60	112.12	-	56.33	-	34.33
30 Fresh Vegetables	2.0947	118.65	126.22	161.31	-	6.00	-	26.45
31 Sugar	2.0296	149.75	148.75	130.07	+	0.67	+	15.13
32 Gur	0.1522	140.72	141.23	132.59	-	0.36	+	6.13
33 Honey	0.0296	131.13	130.58	122.50	+	0.42	+	7.04
34 Sweetmeat	0.3967	134.88	134.72	125.39	+	0.12	+	7.57
35 Ice Cream	0.0568	134.19	133.02	122.09	+	0.88	+	9.91
36 Condiments and Spices	1.4919	190.51	190.13	153.42	+	0.20	+	24.18
37 Dessert Preparation	0.0133	128.27	124.47	114.56	+	3.05	+	11.97
38 Tea	1.2566	138.10	137.95	137.87	+	0.11	+	0.17
39 Beverages	0.5537	130.18	129.89	122.92	+	0.22	+	5.91
<b>Alcoholic Beverages, Tobacco</b>	<b>1.2786</b>	<b>135.46</b>	<b>135.33</b>	<b>128.99</b>	<b>+</b>	<b>0.10</b>	<b>+</b>	<b>5.02</b>
40 Cigarettes	1.2364	134.17	134.03	128.15	+	0.10	+	4.70
41 Pan Prepared	0.0422	173.46	173.46	153.63	+	0.00	+	12.91
<b>Clothing and footwear</b>	<b>9.4826</b>	<b>147.93</b>	<b>147.45</b>	<b>134.33</b>	<b>+</b>	<b>0.33</b>	<b>+</b>	<b>10.12</b>
42 Cotton Cloth	2.8381	161.77	160.94	144.86	+	0.52	+	11.67
43 Woolen Cloth	1.0959	137.22	136.42	124.64	+	0.59	+	10.09
44 Readymade Garments	1.1345	137.99	137.69	131.01	+	0.22	+	5.33
45 Woolen Readymade Garments	0.5401	143.31	142.57	130.27	+	0.52	+	10.01
46 Tailoring	1.2999	146.60	146.44	133.68	+	0.11	+	9.66
47 Hosiry	0.4322	178.54	177.90	148.55	+	0.36	+	20.19
48 Dopatta	0.2078	137.85	137.50	129.82	+	0.25	+	6.19
49 Cleaning and Laundering	0.0176	141.54	141.54	126.52	+	0.00	+	11.87
50 Footware	1.9165	135.92	135.89	125.17	+	0.02	+	8.59
<b>Housing, water, Elec., Gas an</b>	<b>18.4853</b>	<b>141.76</b>	<b>135.50</b>	<b>126.39</b>	<b>+</b>	<b>4.62</b>	<b>+</b>	<b>12.16</b>
51 House Rent	8.6110	136.97	136.97	129.42	+	0.00	+	5.83
52 Construction Input Items	0.6306	130.17	132.24	118.56	-	1.57	+	9.79
53 Construction Wage Rates	0.2526	154.97	154.36	145.09	+	0.40	+	6.81
54 Water Supply	0.0645	214.98	214.98	158.09	+	0.00	+	35.99
55 Garbage Collection	0.0080	142.31	142.31	132.21	+	0.00	+	7.64
56 Electricity Charges	3.4431	154.56	119.40	108.04	+	29.45	+	43.06
57 Liquified Hydrocarbons	0.9994	138.50	142.80	148.78	-	3.01	-	6.91
58 Solid Fuel	4.4761	141.67	141.67	129.24	+	0.00	+	9.62
<b>Furnishing and household equi</b>	<b>4.1031</b>	<b>138.88</b>	<b>137.36</b>	<b>126.20</b>	<b>+</b>	<b>1.11</b>	<b>+</b>	<b>10.05</b>
59 Furniture and Furnishing	0.5786	141.74	141.15	128.55	+	0.42	+	10.26

**Annexure B:CPI (Rural) Index Numbers by Commodity Groups & Commodities (2015-16=100)**

Item and Specification	Weight	Index Numbers			% Change in Feb 2021 over	
		Feb 21	Jan 21	Feb 20	Jan 2021	Feb 2020
60 Household Textiles	0.4382	133.43	133.02	124.99	+ 0.31	+ 6.75
61 Household Equipments	1.2774	144.77	143.57	131.43	+ 0.84	+ 10.15
62 Plastic Products	0.0776	153.59	153.31	135.69	+ 0.18	+ 13.19
63 Major Tools and Equipments	0.0324	123.95	122.41	114.44	+ 1.26	+ 8.31
64 Washing Soaps, Detergents and	1.6989	134.50	132.07	121.57	+ 1.84	+ 10.64
<b>Health</b>	<b>3.5141</b>	<b>151.36</b>	<b>149.99</b>	<b>137.89</b>	<b>+ 0.91</b>	<b>+ 9.77</b>
65 Drugs and Medicines	1.5792	152.71	151.04	139.81	+ 1.11	+ 9.23
66 Doctor Clinic Fee	0.5128	185.37	184.30	158.77	+ 0.58	+ 16.75
67 Dental Services	0.0181	132.61	126.65	113.82	+ 4.71	+ 16.51
68 Medical Tests	0.3967	153.74	153.43	138.31	+ 0.20	+ 11.16
69 Hospitals Services	1.0073	131.31	129.94	124.52	+ 1.05	+ 5.45
<b>Transport</b>	<b>5.5580</b>	<b>142.24</b>	<b>140.17</b>	<b>144.02</b>	<b>+ 1.48</b>	<b>- 1.24</b>
70 Motor Vehicles	0.7305	132.26	130.38	127.18	+ 1.44	+ 3.99
71 Motor Vehicles Accessories	0.1572	139.25	139.18	133.68	+ 0.05	+ 4.17
72 Motor Fuels	2.4932	152.07	149.67	160.80	+ 1.60	- 5.43
73 Mechanical Services	0.3645	155.26	155.26	148.76	+ 0.00	+ 4.37
74 Motor Vehicle Tax	0.0174	127.98	127.98	127.98	+ 0.00	+ 0.00
75 Transport Services	1.7952	130.41	128.10	127.67	+ 1.80	+ 2.15
<b>Communication</b>	<b>1.9940</b>	<b>105.08</b>	<b>105.08</b>	<b>104.72</b>	<b>+ 0.00</b>	<b>+ 0.34</b>
76 Postal Services	0.0070	149.43	149.43	149.43	+ 0.00	+ 0.00
77 Communication Apparatus	0.3362	120.28	120.28	118.95	+ 0.00	+ 1.12
78 Communication Services	1.6508	101.79	101.79	101.63	+ 0.00	+ 0.16
<b>Recreation and culture</b>	<b>1.3764</b>	<b>130.73</b>	<b>130.62</b>	<b>122.15</b>	<b>+ 0.08</b>	<b>+ 7.02</b>
79 Recreation and Culture	0.4763	133.32	133.06	127.19	+ 0.20	+ 4.82
80 Text Books	0.5047	117.28	117.28	109.72	+ 0.00	+ 6.89
81 Newspapers	0.0230	165.56	165.56	161.68	+ 0.00	+ 2.40
82 Stationery	0.3724	143.51	143.43	130.12	+ 0.06	+ 10.29
<b>Education</b>	<b>2.1342</b>	<b>135.46</b>	<b>135.37</b>	<b>133.12</b>	<b>+ 0.07</b>	<b>+ 1.76</b>
83 Education	2.1342	135.46	135.37	133.12	+ 0.07	+ 1.76
<b>Restaurants and hotels</b>	<b>6.1895</b>	<b>142.46</b>	<b>141.96</b>	<b>131.63</b>	<b>+ 0.35</b>	<b>+ 8.23</b>
84 Readymade Food	3.8001	152.66	151.84	135.66	+ 0.54	+ 12.53
85 Marriage Hall Charges	2.2525	127.73	127.73	126.67	+ 0.00	+ 0.84
86 Accommodation Services	0.1369	101.62	101.62	101.59	+ 0.00	+ 0.03
<b>Misc. goods and services</b>	<b>5.0174</b>	<b>152.02</b>	<b>150.73</b>	<b>134.74</b>	<b>+ 0.86</b>	<b>+ 12.82</b>
87 Personal Grooming Services	1.5363	154.47	151.29	137.45	+ 2.10	+ 12.38
88 Appliances/Articles/Products	2.2746	131.21	129.56	119.29	+ 1.27	+ 9.99
89 Personal Effects n.e.c.	1.2065	188.15	189.95	160.42	- 0.95	+ 17.29



## Annexure C: Wholesale Price Indices by Major Groups &amp; Commodities

(2015-16=100)

Item and Specification	Weight	Index Numbers			% Change in Feb 2021 over			
		Feb 21	Jan 21	Feb 20	Jan 2021	Feb 2020		
<b>General</b>	<b>100.0000</b>	<b>156.90</b>	<b>153.53</b>	<b>143.27</b>	<b>+</b>	<b>2.20</b>	<b>+</b>	<b>9.51</b>
<b>Agriculture Forestry &amp; Fisher</b>	<b>25.7674</b>	<b>157.51</b>	<b>154.41</b>	<b>140.02</b>	<b>+</b>	<b>2.01</b>	<b>+</b>	<b>12.49</b>
001 Wheat	0.6297	169.04	166.90	129.33	+	1.28	+	30.70
002 Maize	0.6764	170.89	177.99	145.94	-	3.99	+	17.10
003 Rice	2.4413	170.61	167.89	145.89	+	1.62	+	16.94
004 Sorghum / Jowar	0.0214	203.26	199.03	152.25	+	2.13	+	33.50
005 Millet / Bajra	0.0374	162.32	160.23	120.58	+	1.30	+	34.62
006 Vegetables	1.2441	121.23	133.51	177.08	-	9.20	-	31.54
007 Fresh Fruits	1.5144	139.65	120.36	126.06	+	16.03	+	10.78
008 Dry Fruits	0.2478	137.91	137.49	127.54	+	0.31	+	8.13
009 Cotton Seeds	1.1511	142.76	142.03	136.07	+	0.51	+	4.92
010 Other Oil Seeds	0.0722	156.48	158.52	136.82	-	1.29	+	14.37
011 Edible Roots / Potatoes	0.2540	170.82	195.52	211.38	-	12.63	-	19.19
012 Stimulant & Spice Crops	0.1634	259.44	264.86	288.43	-	2.05	-	10.05
013 Pulses	0.4901	127.95	122.65	122.04	+	4.32	+	4.84
014 Sugar Crops	1.0725	139.03	143.24	114.58	-	2.94	+	21.34
015 Fibre Crops	5.3169	206.90	197.74	172.18	+	4.63	+	20.16
016 Unmanufactured Tobacco	0.0742	233.50	221.46	173.28	+	5.44	+	34.75
017 Poultry	0.5633	160.66	115.05	117.36	+	39.64	+	36.90
018 Raw Milk from Bovine Animals	7.0279	134.87	134.81	116.57	+	0.04	+	15.70
019 Eggs	0.5034	174.95	187.55	111.06	-	6.72	+	<u>57.53</u>
020 Raw Animal Materials / Wool	0.0351	105.62	105.50	105.33	+	0.11	+	0.28
021 Hides, Skins & Fur Skins, Raw	0.4834	33.86	30.68	38.89	+	10.37	-	12.93
022 Fuel Wood in Logs	0.0179	129.65	128.11	114.57	+	1.20	+	13.16
023 Fish Live Fresh or Chilled	1.7295	158.26	158.30	160.12	-	0.03	-	1.16
<b>Ores/Minerals, Elec., Gas &amp; W</b>	<b>12.0069</b>	<b>173.73</b>	<b>169.13</b>	<b>162.59</b>	<b>+</b>	<b>2.72</b>	<b>+</b>	<b>6.85</b>
024 Coal not Agglomerated	0.7508	75.79	75.79	82.17	+	0.00	-	7.76
025 Natural Gas Liquefied	5.7065	203.59	204.15	198.05	-	0.27	+	2.80
026 Salt & Pure Sodium Chloride	0.0584	168.93	168.75	154.99	+	0.11	+	8.99
027 Electrical Energy	5.4912	156.14	145.49	136.82	+	7.32	+	14.12
<b>Food, Beverages, Tobacco, Textil</b>	<b>31.1122</b>	<b>149.26</b>	<b>147.49</b>	<b>132.60</b>	<b>+</b>	<b>1.20</b>	<b>+</b>	<b>12.56</b>
<b>Food Products, Beverages &amp;</b>	<b>20.0718</b>	<b>150.34</b>	<b>147.69</b>	<b>128.22</b>	<b>+</b>	<b>1.79</b>	<b>+</b>	<b>17.25</b>
028 Meat of Animals	3.4559	161.26	161.05	138.25	+	0.13	+	16.64
029 Vegetables & Fruit Juice	0.0058	116.93	114.63	112.66	+	2.01	+	3.79
030 Dried Fruits & Nuts	0.1733	184.48	184.90	158.57	-	0.23	+	16.34
031 Fruit Juices	0.3880	128.72	128.61	117.89	+	0.09	+	9.19
032 Vegetable Oils Refined	1.9242	152.74	140.99	122.35	+	8.33	+	24.84
033 Vegetable Ghee	1.5632	179.73	170.99	147.49	+	5.11	+	21.86
034 Oil Cakes	0.9611	165.02	157.17	134.30	+	4.99	+	22.87
035 Processed Liquid Milk	4.4437	143.36	143.36	124.33	+	0.00	+	15.31
036 Milk & Cream in Solid Form	0.0316	133.71	133.20	124.10	+	0.38	+	7.74
037 Ice Cream	0.0047	137.64	137.64	117.05	+	0.00	+	17.59
038 Dairy Products N.E.C	0.0117	140.21	140.21	128.70	+	0.00	+	8.94
039 Wheat Flour	2.3034	148.39	148.26	124.44	+	0.09	+	19.25
040 Other Cereal Flour	0.0604	127.98	119.00	128.31	+	7.55	-	0.26
041 Sugar Refined	1.7975	150.26	147.48	128.06	+	1.89	+	17.34
042 Chocolate	0.0139	88.95	88.54	81.57	+	0.46	+	9.05
043 Sugar Confectionary	0.0738	187.19	186.36	115.50	+	0.45	+	<u>62.07</u>
044 Coffee & Tea	0.7303	129.86	129.86	127.64	+	0.00	+	1.74
045 Spices	0.1449	330.18	309.97	141.41	+	6.52	+	<u>133.4</u>
046 Other Food Products	0.0336	117.57	117.57	110.93	+	0.00	+	5.99
047 Mineral Water	0.0207	125.24	125.24	122.47	+	0.00	+	2.26
048 Beverages	0.6303	129.22	129.38	125.01	-	0.12	+	3.37
049 Tobacco Products	1.2998	104.23	104.23	104.23	+	0.00	+	0.00
<b>Textiles &amp; Apparels</b>	<b>10.3289</b>	<b>149.20</b>	<b>149.05</b>	<b>142.53</b>	<b>+</b>	<b>0.10</b>	<b>+</b>	<b>4.68</b>
050 Cotton Yarn	5.2491	164.84	164.84	164.84	+	0.00	+	0.00
051 Nylon Yarn	0.1719	95.24	95.24	95.24	+	0.00	+	0.00
052 Blended Yarn	0.1689	120.22	120.22	120.22	+	0.00	+	0.00
053 Woven Fabrics	0.0128	152.49	144.61	133.81	+	5.45	+	13.96
054 Cotton Fabrics	0.6343	155.52	155.34	118.01	+	0.12	+	31.79
055 Other Fabrics	1.1016	115.47	114.90	112.30	+	0.50	+	2.82
056 Silk & Reyon Fabrics	0.7350	149.55	148.72	117.76	+	0.56	+	27.00
057 Towels	0.1235	132.31	132.31	117.41	+	0.00	+	12.69
058 Blankets	0.0029	104.95	104.95	96.44	+	0.00	+	8.82
059 Bed Sheets	0.0913	123.12	122.05	112.64	+	0.88	+	9.30
060 Quilts	0.0019	117.24	117.24	109.35	+	0.00	+	7.22
061 Woolen Carpets	0.0383	137.01	137.01	137.01	+	0.00	+	0.00

## Annexure C: Wholesale Price Indices by Major Groups &amp; Commodities

(2015-16=100)

Item and Specification	Weight	Index Numbers			% Change in Feb 2021 over	
		Feb 21	Jan 21	Feb 20	Jan 2021	Feb 2020
062 Synthetic Carpets	0.0566	116.17	116.17	115.72	+ 0.00	+ 0.39
063 Hosiery Products	0.8832	130.78	130.78	121.90	+ 0.00	+ 7.28
064 Readymade Garments	1.0576	138.04	137.99	131.16	+ 0.04	+ 5.25
<b>Leather Products</b>	<b>0.7115</b>	<b>119.35</b>	<b>119.35</b>	<b>111.94</b>	<b>+ 0.00</b>	<b>+ 6.62</b>
065 Leather Without Hair	0.2973	108.77	108.77	105.65	+ 0.00	+ 2.95
066 Other Leather N.E.C	0.2567	111.77	111.77	111.77	+ 0.00	+ 0.00
067 Footwears	0.1575	151.69	151.69	124.07	+ 0.00	+ 22.26
<b>Other Transportable Goods</b>	<b>22.3979</b>	<b>158.02</b>	<b>151.47</b>	<b>155.06</b>	<b>+ 4.32</b>	<b>+ 1.91</b>
068 Timber	0.0165	152.83	152.83	111.96	+ 0.00	+ 36.50
069 Printing Paper	0.4279	130.70	130.70	130.70	+ 0.00	+ 0.00
070 Hard Board	0.1579	146.50	146.50	146.50	+ 0.00	+ 0.00
071 Motor Spirit	1.6268	154.24	151.61	165.08	+ 1.73	- 6.57
072 Diesel Oil	5.4849	158.48	151.06	171.39	+ 4.91	- 7.53
073 Kerosine Oil	0.2151	157.27	147.38	195.04	+ 6.71	- 19.37
074 Furnace Oil	3.2664	262.09	236.50	234.47	+ 10.82	+ 11.78
075 Mobil Oil	0.7114	122.10	121.14	122.31	+ 0.79	- 0.17
076 Chemicals	1.7720	140.54	141.23	129.69	- 0.49	+ 8.37
077 Dyeing Material	0.1539	146.16	146.16	146.16	+ 0.00	+ 0.00
078 Fertilizers	2.8657	103.90	99.78	100.80	+ 4.13	+ 3.08
079 Pesticides	0.2763	141.99	141.99	111.24	+ 0.00	+ 27.64
080 Insecticides	0.1276	111.49	111.49	111.49	+ 0.00	+ 0.00
081 Paints & Varnishes	0.1916	136.05	135.82	124.68	+ 0.17	+ 9.12
082 Medicines	1.1428	146.79	146.31	144.86	+ 0.33	+ 1.33
083 Soaps & Detergents	0.8168	114.86	111.18	109.88	+ 3.31	+ 4.53
084 Auto Tyres	0.2703	125.48	125.48	121.54	+ 0.00	+ 3.24
085 Plastic Products	0.4550	117.99	117.76	108.15	+ 0.20	+ 9.10
086 Glass sheets	0.2089	147.41	147.24	145.21	+ 0.12	+ 1.52
087 Other Glass Articles	0.1635	149.95	149.95	132.20	+ 0.00	+ 13.43
088 Ceramics & Sanitary Fixture	0.0244	124.45	124.21	123.86	+ 0.19	+ 0.48
089 Bricks, Blocks & Tiles	0.1566	132.53	132.53	120.61	+ 0.00	+ 9.88
090 Cement	1.8145	123.64	123.08	114.72	+ 0.45	+ 7.78
091 Bed Foam	0.0006	149.96	149.96	145.96	+ 0.00	+ 2.74
092 Matches	0.0505	1173.3	1171.7	1170.1	+ 0.13	+ 0.27
<b>Metal Product, Machinery &amp; Eq</b>	<b>8.7156</b>	<b>156.36</b>	<b>156.32</b>	<b>134.03</b>	<b>+ 0.03</b>	<b>+ 16.66</b>
093 Steel Bar & Sheets	1.4615	176.04	179.59	155.21	- 1.98	+ 13.42
094 Pipe Fittings	0.0780	169.43	169.43	141.32	+ 0.00	+ 19.89
095 Steel Products	0.3879	134.28	134.24	133.35	+ 0.03	+ 0.70
096 Engines & Motors	0.0046	107.29	107.29	107.29	+ 0.00	+ 0.00
097 Vacuum Pumps	0.0155	107.56	107.56	107.56	+ 0.00	+ 0.00
098 Air Conditioners	0.0049	123.30	123.30	112.46	+ 0.00	+ 9.64
099 Cultivators	0.0551	103.75	103.75	103.75	+ 0.00	+ 0.00
100 Chuff Cutter	0.1293	110.00	110.00	107.14	+ 0.00	+ 2.67
101 Tractors	0.0028	129.36	129.36	109.22	+ 0.00	+ 18.44
102 Lathe Machines	0.0525	217.68	217.68	168.06	+ 0.00	+ 29.53
103 Concrete Mixture	0.0107	100.00	100.00	100.00	+ 0.00	+ 0.00
104 Fridge, WashM, SewM, Fans, Iron	1.1645	158.01	154.69	148.68	+ 2.15	+ 6.28
105 Electric Wires	0.0912	144.65	144.65	125.73	+ 0.00	+ 15.05
106 Lighting Equipments	1.4431	119.49	119.49	116.71	+ 0.00	+ 2.38
107 Radio & Television	0.1843	105.87	105.55	100.59	+ 0.30	+ 5.25
108 Motor Vehicles	0.0244	158.44	157.19	156.02	+ 0.80	+ 1.55
109 Motorcycles	0.2570	131.90	125.84	120.09	+ 4.82	+ 9.83
110 Bicycles	3.3483	172.55	172.55	131.36	+ 0.00	+ 31.36