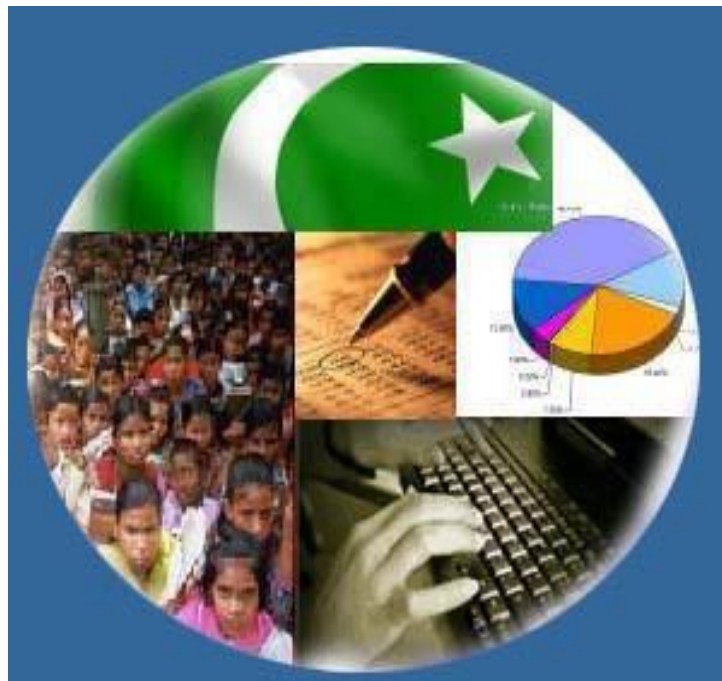




# Monthly Review on Price Indices



**February, 2020**  
**(Base Year 2015-16)**

**Government of Pakistan**  
**Ministry of Planning, Development & Special Initiatives**  
**Pakistan Bureau of Statistics**  
**Islamabad**



## Inflation in Brief

- CPI inflation General**, increased by 12.4% on year-on-year basis in February 2020 as compared to an increase of 14.6% in the previous month and 6.8% in February 2019. On month-on-month basis, it decreased by 1.0% in February 2020 as compared to an increase of 2.0% in the previous month and an increase of 0.9% in February 2019.
- CPI inflation Urban**, increased by 11.2% on year-on-year basis in February 2020 as compared to an increase of 13.4% in the previous month and 7.2% in February 2019. On month-on-month basis, it decreased by 1.1% in February 2020 as compared to an increase of 1.7% in the previous month and an increase of 0.9% in February 2019.
- CPI inflation Rural**, increased by 14.2% on year-on-year basis in February 2020 as compared to an increase of 16.3% in the previous month and 6.0% in February 2019. On month-on-month basis, it decreased by 1.0% in February 2020 as compared to an increase of 2.4% in the previous month and an increase of 0.9% in February 2019.
- SPI inflation** on YoY increased by 14.5% in February 2020 as compared to an increase of 18.3% a month earlier and an increase of 7.2% in February 2019. On MoM basis, it decreased by 0.8% in February 2020 as compared to an increase of 0.5% a month earlier and an increase of 2.4% in February 2019.
- WPI inflation** on YoY basis increased by 12.6% in February 2020 as compared to an increase of 15.4% a month earlier and an increase of 13.9% in February 2019. WPI inflation on MoM basis it decreased by 0.8% in February 2020 as compared to an increase of 1.8% a month earlier and an increase of 1.6% in corresponding month of last year i.e. February 2019.
- Figures 1.a and 1.b show graphically the data of Table 1. Table 1.1 shows "Period Average" and "YoY" percent changes in indices of three years.

Table 1.a General Inflation (%) (Base 2015-16)																		
PERIOD	CPI														SPI**		WPI	
	General						Food				Non-Food							
	National		Urban		Rural		Urban		Rural		Urban		Rural		YoY	MoM	YoY	MoM
	YoY	MoM	YoY	MoM	YoY	MoM	YoY	MoM	YoY	MoM	YoY	MoM	YoY	MoM				
Feb-19	6.8	0.9	7.2	0.9	6.0	0.9	5.9	2.3	5.2	1.7	8.0	0.1	6.7	0.2	7.2	2.4	13.9	1.6
Mar-19	8.6	2.0	8.9	1.9	8.2	2.2	8.8	2.5	9.3	3.3	9.0	1.5	7.3	1.3	10.5	2.1	16.6	2.2
Apr-19	8.3	0.7	8.4	0.8	8.1	0.6	8.3	1.3	9.3	0.6	8.4	0.6	7.2	0.6	10.0	0.5	17.1	1.8
May-19	8.4	0.6	8.5	0.7	8.3	0.5	9.0	1.3	9.7	0.6	8.3	0.3	7.1	0.4	9.9	0.6	16.5	1.5
Jun-19	8.0	0.5	8.1	0.3	7.9	0.7	7.5	-0.3	9.1	0.7	8.4	0.7	7.0	0.7	9.3	0.9	14.0	0.2
Jul-19	8.4	1.8	8.7	2.0	7.9	1.6	7.9	1.0	9.3	1.7	9.2	2.5	6.7	1.5	8.9	1.0	13.3	3.1
Aug-19	10.5	1.6	10.6	1.5	10.3	1.9	11.9	3.1	12.6	2.9	9.9	0.5	8.4	1.1	12.1	2.7	14.1	1.2
Sep-19	11.4	0.8	11.6	0.7	11.1	0.8	15.0	2.0	15.0	1.8	9.7	0.0	8.0	0.0	14.7	1.9	15.9	0.1
Oct-19	11.0	1.8	10.9	1.6	11.3	2.2	13.7	1.4	14.6	2.6	9.3	1.7	8.7	1.8	15.1	2.7	13.3	2.0
Nov-19	12.7	1.3	12.1	1.0	13.6	1.9	16.6	2.4	19.3	3.4	9.6	0.2	9.0	0.6	20.2	3.7	11.2	-0.8
Dec-19	12.6	-0.3	12.0	-0.4	13.6	-0.3	16.7	-1.7	19.7	-1.1	9.5	0.4	8.8	0.4	18.1	-2.0	12.4	-0.3
Jan-20	14.6	2.0	13.4	1.7	16.3	2.4	19.5	2.7	23.8	3.4	10.2	1.1	10.5	1.5	18.3	0.5	15.4	1.8
Feb-20	12.4	-1.0	11.2	-1.1	14.2	-1.0	15.2	-1.4	19.7	-1.6	9.1	-0.9	9.8	-0.4	14.5	-0.8	12.6	-0.8

\*\* SPI for quintile 1. Digits 0.0\* are due to rounding off.

7. **Core inflation** measured by **non-food non-energy Urban CPI** (Core NFNE) increased by 8.0% on (YoY) basis in February 2020 as compared to an increase of 7.9% in the previous month and 7.1% in February 2019. On (MoM) basis, it increased by 0.2% in February 2020 as compared to increase of 1.1% in previous month, and an increase of 0.2% in corresponding month of last year i.e. February 2019.
8. **Core inflation** measured by **non-food non-energy Rural CPI** (Core NFNE) increased by 9.4% on (YoY) basis in February 2020 as compared to an increase of 9.0% in the previous month and 6.4% in February 2019. On (MoM) basis, it increased by 0.5% in February 2020 as compared to an increase of 1.0% in previous month, and an increase of 0.2% in corresponding month of last year i.e. February 2019.
9. **Core inflation**, measured by 20% weighted trimmed mean **Urban CPI** (Core Trimmed) increased by 9.7% on (YoY) basis in February 2020 as compared to 10.3% in the previous month and by 6.7% in February 2019. On (MoM) basis, it increased by 0.1% in February 2020 as compared to an increase of 1.2% in the previous month and an increase of 0.2% in corresponding month of last year i.e. February 2019.
10. **Core inflation**, measured by 20% weighted trimmed mean **Rural CPI** (Core Trimmed) increased by 12.8% on (YoY) basis in February 2020 as compared to 12.7% in the previous month and by 6.2% in February 2019. On (MoM) basis, it increased by 0.6% in February 2020 as compared to an increase of 1.9% in the previous month and an increase of 0.3% in corresponding month of last year i.e. February 2019.

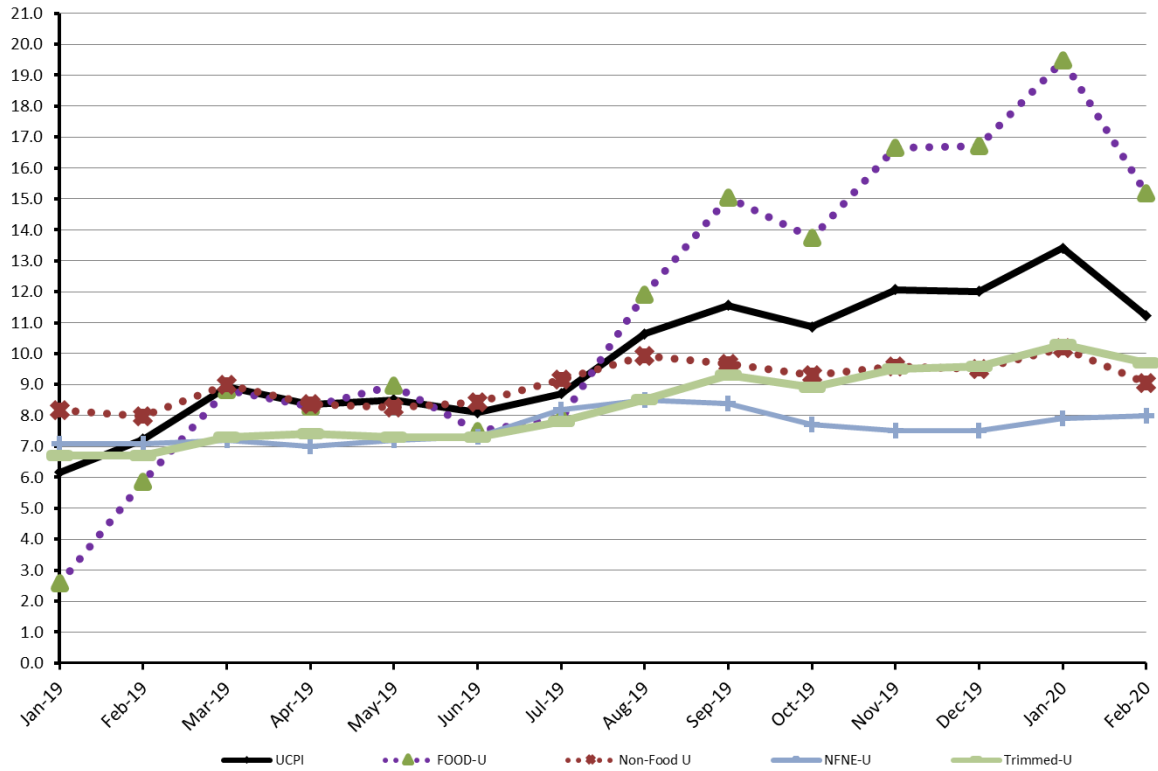
**Table 1.b Core Inflation (%) (Base 2015-16)**

Period	NFNE				Trimmed			
	Urban		Rural		Urban		Rural	
	YoY	MoM	YoY	MoM	YoY	MoM	YoY	MoM
Feb-19	7.1	0.2	6.4	0.2	6.7	0.2	6.2	0.3
Mar-19	7.2	0.8	6.5	0.6	7.3	0.8	6.5	0.6
Apr-19	7.0	1.1	6.8	1.2	7.4	1.1	7.3	0.8
May-19	7.2	0.5	6.8	0.4	7.3	0.5	7.2	0.5
Jun-19	7.3	0.2	6.7	0.3	7.3	0.4	7.2	0.7
Jul-19	8.2	1.8	7.8	2.0	7.8	1.4	7.4	1.6
Aug-19	8.5	0.4	8.8	1.0	8.5	0.6	8.7	1.2
Sep-19	8.4	0.4	8.8	0.3	9.3	0.6	9.6	0.6
Oct-19	7.7	0.5	8.6	0.7	8.9	0.5	9.4	0.7
Nov-19	7.5	0.3	8.4	0.5	9.5	0.4	10.7	0.7
Dec-19	7.5	0.4	8.1	0.3	9.6	0.2	10.8	0.3
Jan-20	7.9	1.1	9.0	1.0	10.3	1.2	12.7	1.9
Feb-20	8.0	0.2	9.4	0.5	9.7	0.1	12.8	0.6

**Table 1.1 Period Average and YoY % Change**

INDEX	Average July- February % changes			February over February % changes		
	2019-2020	2018-2019	2017-2018	2019-2020	2018-2019	2017-2018
<b>CPI (National)</b>	11.70	6.00	4.76	12.40	6.75	4.46
<b>CPI(Urban)</b>	11.32	6.39	5.20	11.21	7.23	4.76
<b>CPI(Rural)</b>	12.31	5.42	4.11	14.22	6.02	4.00
<b>SPI</b>	15.25	2.74	3.35	14.52	7.17	2.32
<b>WPI</b>	13.49	15.95	3.94	12.61	13.93	5.94

**Figure 1: UCPI Inflation YoY, Special Indices**



**Figure 2: RCPI Inflation YoY, Special Indices**

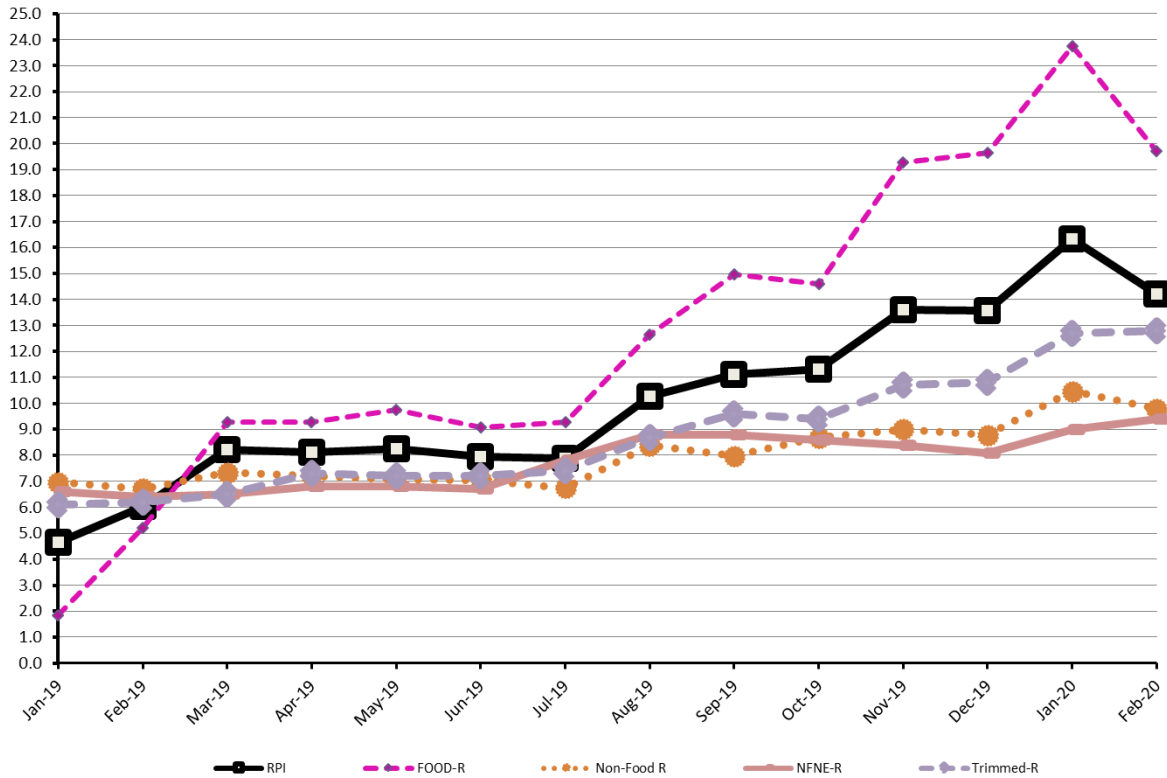


Figure 3: UCPI Inflation MoM, Special Indices

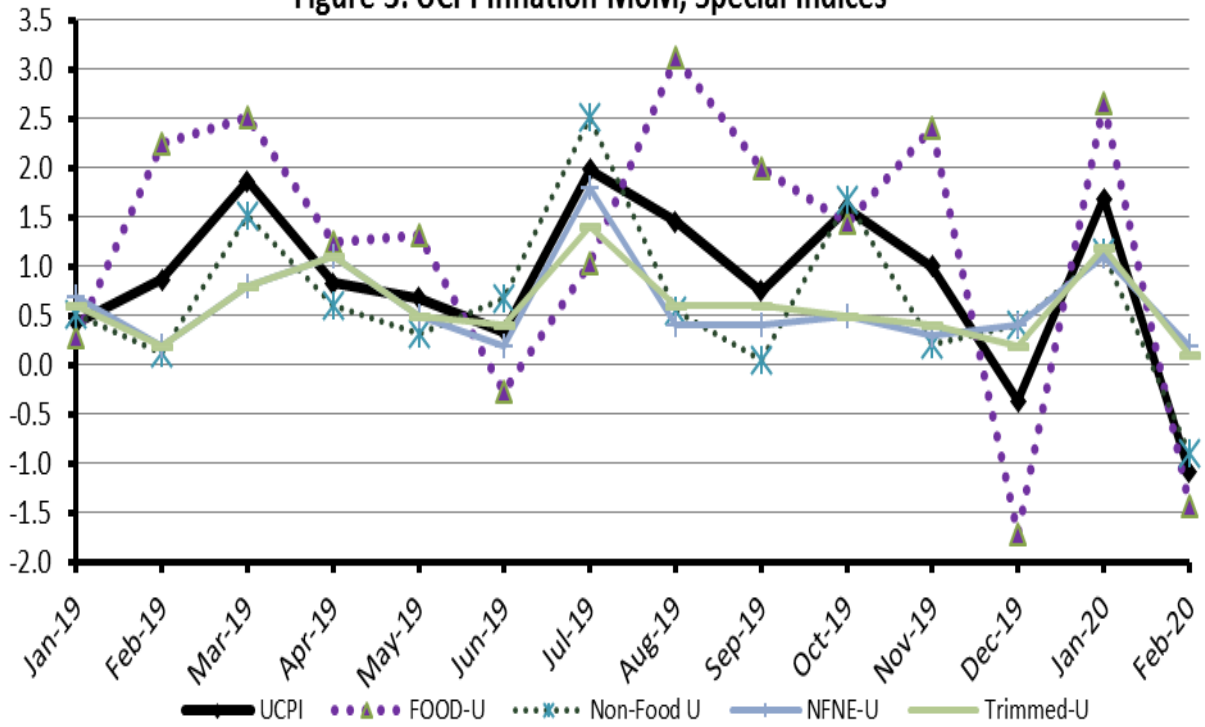


Figure 4: RPI Inflation MoM, Special Indices

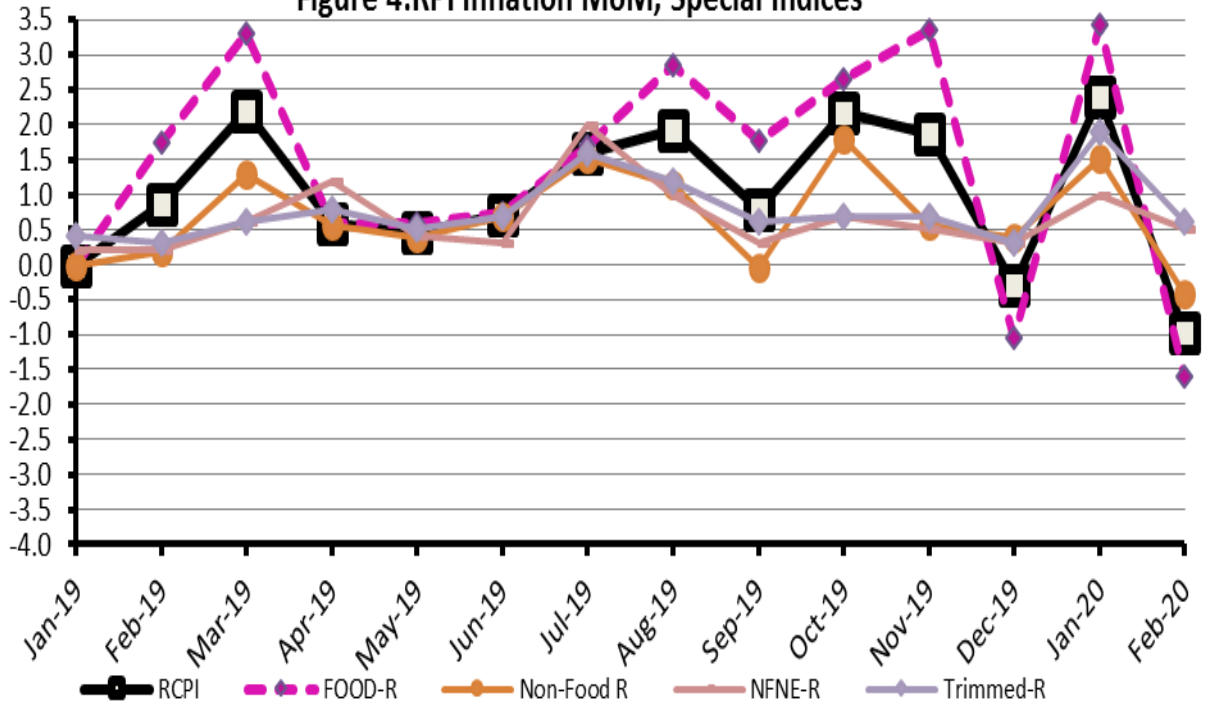


Figure 5: CPI Y.o.Y (National, Urban, Rural)

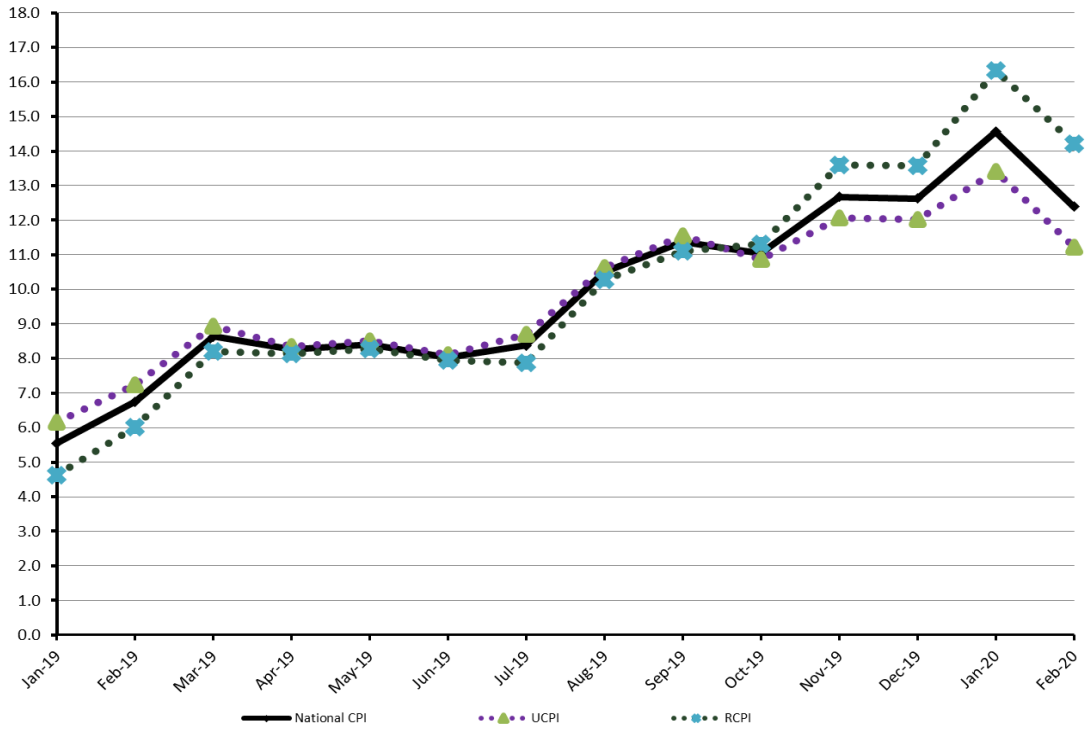
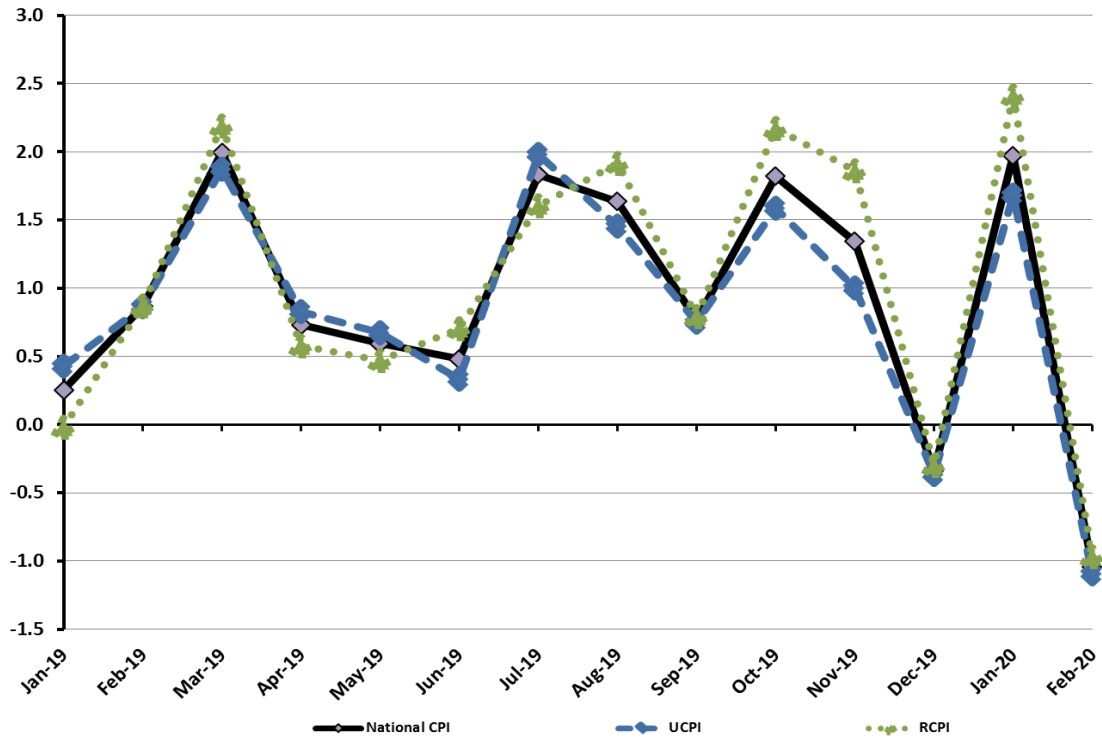


Figure 6: CPI M.o.M (National, Urban, Rural)



## I. National Consumer Price Index (N-CPI)

The **National Consumer Price Index** of February 2020 is decreased by 1.04% over January 2020 and increased by 12.40% over corresponding month of the last year i.e. February 2019.

**Table 1 : Consumer Price Index (National) by Group of Commodities and Services (Base 2015-16)**

No	Group	Group Weight (%)	Indices			% Change February 2020 Over		Impact (In % points) Feb 2020 Over	
			Feb 2020	Jan 2020	Feb 2019	Jan 2020	Feb 2019	Jan 2020	Feb 2019
	<b>General</b>	<b>100.00</b>	131.64	133.03	117.12	-1.04	12.40	-1.04	12.40
1.	Food & Non-alcoholic Bev.	34.58	132.10	134.78	111.61	-1.99	18.36	-0.70	6.05
	<i>Non-perishable Food Items</i>	<i>29.60</i>	<i>130.65</i>	<i>129.88</i>	<i>112.48</i>	<i>0.60</i>	<i>16.16</i>	<i>0.17</i>	<i>4.59</i>
	<i>Perishable Food Items</i>	<i>4.99</i>	<i>140.66</i>	<i>163.89</i>	<i>106.41</i>	<i>-14.18</i>	<i>32.19</i>	<i>-0.87</i>	<i>1.46</i>
2.	Alcoholic Bev.& Tobacco	1.02	136.28	135.92	115.04	0.27	18.46	0.00	0.19
3.	Clothing & Footwear	8.60	130.68	129.78	118.66	0.69	10.12	0.06	0.88
4.	Housing, Water, Electricity, Gas & Fuels	23.63	129.11	132.38	120.86	-2.47	6.82	-0.58	1.66
5.	Furnishing & Household Equipment Maintenance	4.10	127.02	126.27	115.52	0.59	9.95	0.02	0.40
6.	Health	2.79	138.09	137.39	123.25	0.51	12.04	0.01	0.35
7.	Transport	5.91	145.60	145.22	122.17	0.26	19.18	0.02	1.18
8.	Communication	2.21	106.96	106.93	102.91	0.02	3.94	0.00	0.08
9.	Recreation & Culture	1.59	119.03	118.91	111.71	0.10	6.55	0.00	0.10
10.	Education	3.79	142.11	141.98	132.30	0.09	7.41	0.00	0.32
11.	Restaurants & Hotels	6.92	129.86	128.22	119.51	1.28	8.66	0.09	0.61
12.	Miscellaneous	4.87	134.42	133.53	120.64	0.67	11.43	0.03	0.57



## II. Urban Consumer Price Index (UCPI)

The **Urban Consumer Price Index** of February 2020 is decreased by 1.09% over January 2020 and increased by 11.21% over corresponding month of the last year i.e. February 2019.

**Table 2 : Consumer Price Index (Urban) by Group of Commodities and Services (Base 2015-16)**

No	Group	Group Weight (%)	Indices			% Change February 2020 Over		Impact (In % points) Feb 2020 Over	
			Feb 2020	Jan 2020	Feb 2019	Jan 2020	Feb 2019	Jan 2020	Feb 2019
	General	100.00	131.32	132.77	118.08	-1.09	11.21	-1.09	11.21
1.	Food & Non-alcoholic Bev.	30.42	130.25	132.91	111.94	-2.00	16.36	-0.61	4.72
	Non-perishable Food Items	25.97	128.74	128.42	112.09	0.25	14.85	0.06	3.66
	Perishable Food Items	4.46	139.02	159.07	111.07	-12.60	25.16	-0.67	1.05
2.	Alcoholic Bev.& Tobacco	0.85	143.51	143.25	121.97	0.18	17.66	0.00	0.16
3.	Clothing & Footwear	8.01	127.81	127.13	116.65	0.53	9.57	0.04	0.76
4.	Housing, Water, Electricity, Gas & Fuels	27.03	130.34	133.62	121.89	-2.45	6.93	-0.67	1.93
5.	Furnishing & Household Equipment Maintenance	4.09	127.57	126.84	115.99	0.58	9.98	0.02	0.40
6.	Health	2.31	138.29	137.89	123.86	0.29	11.65	0.01	0.28
7.	Transport	6.14	146.55	146.34	122.22	0.14	19.91	0.01	1.26
8.	Communication	2.35	108.22	108.19	102.82	0.03	5.25	0.00	0.11
9.	Recreation & Culture	1.73	117.38	117.24	110.59	0.12	6.14	0.00	0.10
10.	Education	4.88	144.71	144.71	134.63	0.00	7.49	0.00	0.42
11.	Restaurants & Hotels	7.41	128.88	127.33	119.62	1.22	7.74	0.09	0.58
12.	Miscellaneous	4.77	134.20	133.78	121.88	0.31	10.11	0.01	0.50

Main contributors to month-on-month and year-on-year percentage changes are given below and detail is given in Annexure A.

**1. MONTH-ON-MONTH** Top few commodities which varied from previous month are given below: -

**Food Items Increased:** Vegetable ghee (13.15%), Cooking oil(10.27%), Sugar(8.45%), Mustard oil(4.25%), Fresh fruits(4.16%), Beans(3.89%), Chicken (2.35%), Pulse moong (2.27%), and Pulse mash(1.14%).

**Decreased:** Tomatoes (60.27%), Eggs (26.36%), Potatoes (12.91%), Fresh vegetables (11.48%), Onions(8.79%), Wheat flour (5.29%), Wheat(3.52%), Pulse gram(2.34%), and Besan(2.33%).

**Non-food Items Increased:** Carpets (3.28%) and Solid Fuel (1.19%).

**Decreased:** Liquefied Hydrocarbons (13.53%) and Electricity charges (13.48%).

**YEAR-ON-YEAR:** Top few commodities which varied from previous year i.e. February 2019 are given below:-

**Food Items Increased:** Onions(102.75%), Pulse moong (83.59%), Potatoes(83.24%), Fresh vegetables(61.89%), Pulse mash(51.05%), Sugar(36.9%), Vegetable ghee(33.57%), Gur(33.38%), Wheat(29.96%), Cooking oil(26.89%), Pulse gram(24%), Beans(23.68%), Pulse masoor(21.57%), Wheat flour (17.36%), Mustard oil(15.49%), Chicken (14.52%), Meat(13.28%), Tea(9.66%), Fish(9.4%) and Rice(8.47%).

**Decreased:** Tomatoes (61.04%) and Eggs (10.3%).

**Non-food Items Increased:** Gas charges (54.84%), Motor fuel(26.82%), Drugs and medicines(18.82%), Construction input items(17.86%), Liquefied Hydrocarbons(16.23%) and Woolen cloth(14.74%).

**Decreased:** Electricity charges (4.09%).

### III. Rural Consumer Price Index (RCPI)

The Rural Consumer Price Index of February 2020 is decreased by 0.97% over January 2020 and increased by 14.22% over corresponding month of the last year i.e. February 2019.

**Table 3 : Consumer Price Index (Rural) by Group of Commodities and Services (Base 2015-16)**

No	Group	Group Weight (%)	Indices			% Change February 2020 Over		Impact (In % points) Feb 2020 Over	
			Feb 2020	Jan 2020	Feb 2019	Jan 2020	Feb 2019	Jan 2020	Feb 2019
	<b>General</b>	<b>100.00</b>	132.13	133.42	115.68	-0.97	14.22	-0.97	14.22
1.	Food & Non-alcoholic Bev.	40.87	134.17	136.89	111.23	-1.99	20.62	-0.83	8.11
	Non-perishable Food Items	35.08	132.79	131.51	112.91	0.97	17.61	0.34	6.03
	Perishable Food Items	5.79	142.56	169.50	100.99	-15.89	41.16	-1.17	2.08
2.	Alcoholic Bev. & Tobacco	1.28	128.99	128.52	108.06	0.37	19.37	0.00	0.23
3.	Clothing & Footwear	9.48	134.33	133.17	121.23	0.87	10.81	0.08	1.07
4.	Housing, Water, Electricity, Gas & Fuels	18.49	126.39	129.64	118.60	-2.51	6.57	-0.45	1.24
5.	Furnishing & Household Equipment Maintenance	4.10	126.20	125.42	114.82	0.62	9.91	0.02	0.40
6.	Health	3.51	137.89	136.90	122.64	0.72	12.43	0.03	0.46
7.	Transport	5.56	144.02	143.36	122.08	0.46	17.97	0.03	1.05
8.	Communication	1.99	104.72	104.70	103.06	0.02	1.61	0.00	0.03
9.	Recreation & Culture	1.38	122.15	122.07	113.84	0.07	7.30	0.00	0.10
10.	Education	2.13	133.12	132.56	124.26	0.42	7.13	0.01	0.16
11.	Restaurants & Hotels	6.19	131.63	129.84	119.30	1.38	10.34	0.08	0.66
12.	Miscellaneous	5.02	134.74	133.16	118.85	1.19	13.37	0.06	0.69

Main contributors to month-on-month and year-on-year percentage changes are given below and detail is given in Annexure A.

1. **MONTH-ON-MONTH** Top few commodities which varied from previous month are given below: -

**Food Items Increased:** Sugar(8.00%), Vegetable ghee(6.23%), Condiments and Spices(5.99%), Chicken(5.76%), Pulse Mash(5.13%), Pulse Masoor(4.27%), Pulse Moong(3.94%), Fresh fruits(3.56%), Beans(2.99%), Cooking oil(2.54%) and Mustard oil(1.63%).

**Decreased:** Tomatoes (57.55%), Eggs (20.16%), Potatoes (15.43%), Fresh Vegetables (13.94%), Onions (11.39%), Gur(5.54%), Wheat Flour(3.57%), Pulse Gram(1.48%) and Fish(0.98%).

**Non-food Items Increased:** Cleaning and Laundering(2.22%), Solid Fuel(1.64%), and Cotton Cloth(1.3%).

**Decreased:** Electricity Charges (13.48%) and Liquefied Hydrocarbons (6.70%).

**YEAR-ON-YEAR:** Top few commodities which varied from previous year i.e. February 2019 are given below:-

**Food Items Increased:** Potatoes(107.71%), Onions(95.5%), Pulse Moong(90.26%), Fresh Vegetables(69.89%), Pulse Mash(47.2%), Gur(35.77%), Sugar(35.19%), Condiments and Spices(34.64%), Wheat(33.7%), Vegetable ghee(32.44%), Cooking oil(31.03%), Pulse Masoor(27.7%), Beans(24.57%), Pulse Gram(24.49%), Chicken(21.29%), Wheat Flour(20.71%), Besan(19.53%), Dry fruits(10.5%), Fresh fruits(10.37%) and Tea(9.91%).

**Decreased:** Tomatoes (45.26%) and Eggs (5.33%)

**Non-food Items Increased:** Motor Fuels(27.37%), Doctor Clinic Fee(21.67%), Drugs and Medicines(15.31%), Solid Fuel(12.94%) and Liquefied Hydrocarbons(12.67%).

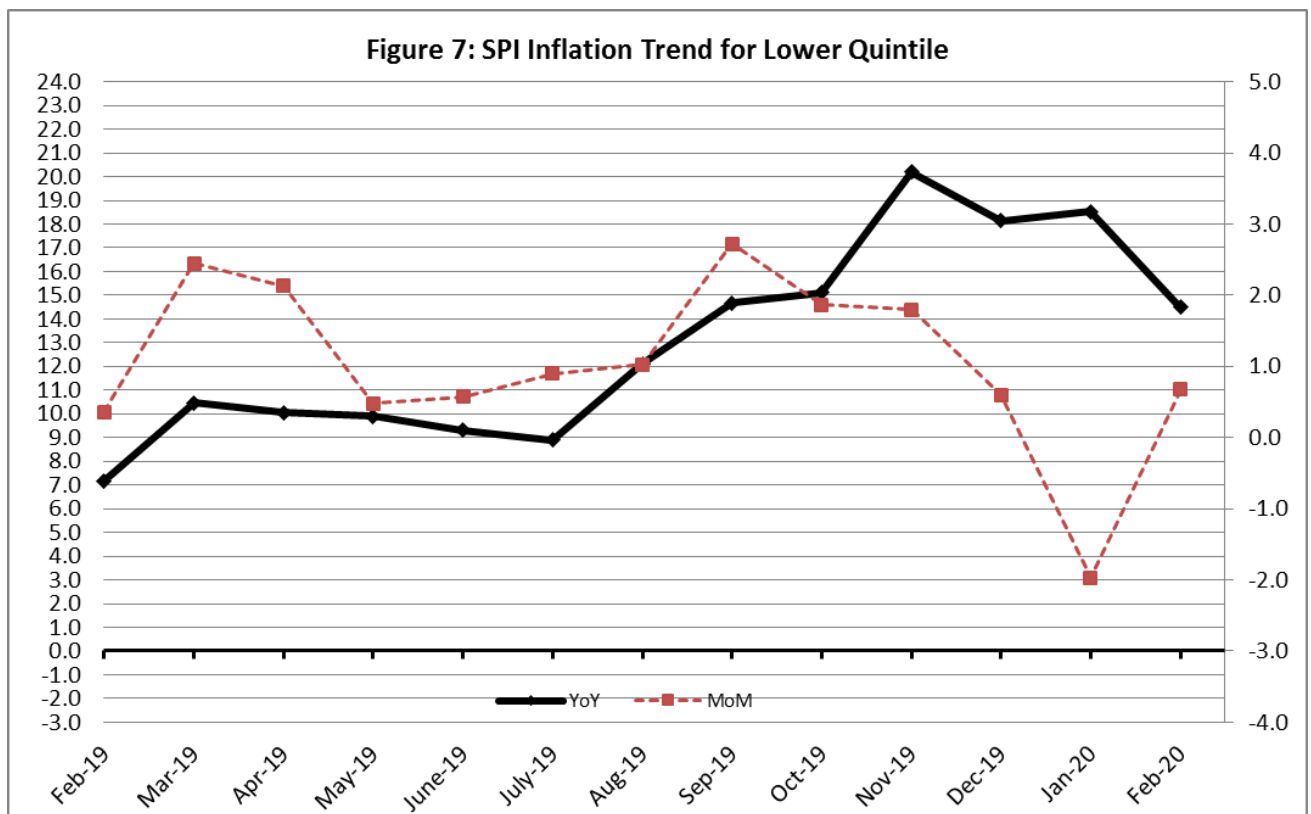
**Decreased:** Electricity Charges (4.09%)

#### IV. Sensitive Price Indicator

Quintile-wise percentage changes YoY and MoM are given below in Table 3. The series from February 2019 to February 2020 is also graphed below in Figure 7.

Table 4: Sensitive Price Indicator (Base 2015-16)					
Quintiles	Indices			% Change February 2020 Over	
	February 2020	January 2020	February 2019	January 2020	February 2019
1	133.68	134.74	116.73	-0.79	14.52
2	129.28	130.55	112.35	-0.97	15.07
3	131.40	132.41	111.04	-0.76	18.34
4	128.62	129.57	109.17	-0.73	17.82
5	132.44	133.62	114.63	-0.88	15.54
Combined	130.45	131.61	112.36	-0.88	16.10

Table 4.1 : Weekly Percentage Change of SPI During February-2020				
Quintiles	% Change with Previous week			
	06-02-2020	13-02-2020	20-02-2020	27-02-2020
Quintile 1	0.48	-0.47	-0.03	-1.34
Combined	0.21	-0.38	-0.14	-1.16



## V. Wholesale Price Index

The Wholesale Price Index for February, 2020 decreased by 0.8% over January 2020. It increased by 12.61% over the corresponding month of the last year. YoY and MoM movements, from February, 2019 to February, 2020 are also graphed below in Figure 4.

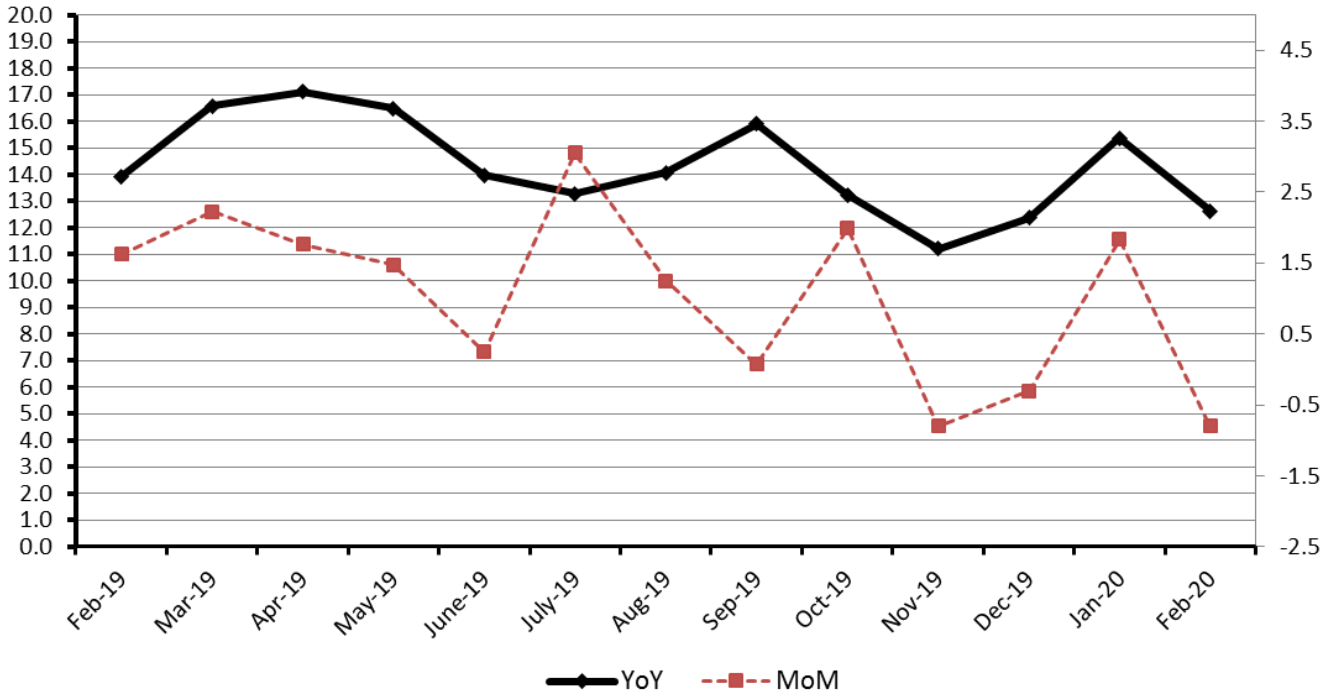
**Table 5 : Wholesale Price Index by Group of Commodities (Base 2015-16)**

No.	Group	Group Weight (%)	Indices			% Change February 2020 Over		Impact (In % points) Feb 2020 Over	
			Feb 20	Jan 20	Feb 19	Jan 20	Feb 19	Jan 20	Feb 19
	<b>General</b>	100.00	143.18	144.34	127.15	-0.80	12.61	-0.80	12.61
1.	Agriculture, Forestry & Fishery Products	25.77	140.02	142.32	122.95	-1.62	13.88	-0.41	3.46
2.	Ores & Minerals, Electricity, Gas & Water	12.01	162.59	169.13	134.02	-3.87	21.32	-0.54	2.70
3.	Food Products, Beverages & Tobacco, Textiles, Apparel & Leather Products	31.11	132.60	132.23	119.08	0.28	11.35	0.08	3.31
	i. Food Products, Bev. & Tobacco	20.07	128.22	127.70	112.42	0.41	14.05	0.07	2.50
	ii. Textiles and Apparel	10.33	142.53	142.44	132.76	0.06	7.36	0.01	0.79
	iii. Leather Products	0.71	111.94	111.94	108.48	0.00	3.19	0.00	0.02
4.	Other Transportable Goods except Metal Products, Machinery & Equipment	22.40	155.06	154.62	143.95	0.28	7.72	0.07	1.96
5.	Metal Products, Machinery & Equipment	8.72	133.07	132.99	115.70	0.06	15.01	0.00	1.19

Main contributors to month-on-month and year-on-year percentage changes are given below and detail is given in Annexure B.

- MONTH-ON-MONTH** Top few commodities which varied from previous month are given below: -  
**Increased:** Sugar (4.62%), Fresh Fruits (4.46%), Vegetable Ghee (3.41%), Medicines (3.07%), Furnace Oil (2.78%), Bricks, Blocks & Tiles (1.1%) and Vegetable Oils Refined (1.1%).  
**Decreased:** Eggs(27.26%), Vegetables(18.82%), Potatoes(9.58%), Fertilizers(6.4%), Wheat (6.26%), Pulses(5.05%), Steel Bar & Sheets(4.11%), Wheat Flour(3.49%) and Natural Gas Liquefied(0.73%).
- YEAR-ON-YEAR** Top few commodities which varied from previous year i.e. February, 2019 are given below: -  
**Increased:** Potatoes(116.22%), Vegetables(55.27%), Cotton Seeds(43.47%), Sugar Refined(34.81%), Natural Gas Liquefied(29.87%), Vegetable Ghee(27.65%), Wheat (25.09%), Medicines(24.08%), Kerosene Oil(20.83%), Wheat Flour(20.56%), Pulses(20.41%), Diesel Oil(15.72%), Maize(15.61%) and Poultry(14.13%).  
**Decreased:** Eggs (12.46%), Vegetables & Fruit Juice(4.64%) and Furnace Oil(4.58%)

Figure 8: WPI Inflation



**Annexure A:CPI (Urban) Index Numbers by Commodity Groups & Commodities (2015-16=100)**

Item and Specification	Weight	Index Numbers			% Change in Feb 2020 over			
		Feb 20	Jan 20	Feb 19	Jan 2020	Feb 2019		
<b>General</b>	<b>100.0000</b>	<b>131.32</b>	<b>132.77</b>	<b>118.08</b>	-	<b>1.09</b>	+	<b>11.21</b>
<b>Food and non-alcoholic Bevera</b>	<b>30.4215</b>	<b>130.25</b>	<b>132.91</b>	<b>111.94</b>	-	<b>2.00</b>	+	<b>16.36</b>
01 Wheat	0.6120	136.73	141.72	105.21	-	3.52	+	29.96
02 Wheat flour	3.0075	120.73	127.48	102.87	-	5.29	+	17.36
03 Wheat products	0.0936	124.81	124.44	108.18	+	0.30	+	15.37
04 Besan	0.0830	126.13	129.14	105.02	-	2.33	+	20.10
05 Rice	1.1804	131.69	131.12	121.41	+	0.43	+	8.47
06 Bakery and confectionary	0.4770	125.69	124.48	108.90	+	0.97	+	15.42
07 Nimco	0.1224	122.87	120.46	110.45	+	2.00	+	11.24
08 Meat	2.0411	142.13	141.84	125.47	+	0.20	+	13.28
09 Chicken	1.3631	118.94	116.21	103.86	+	2.35	+	14.52
10 Fish	0.3855	126.83	127.90	115.93	-	0.84	+	9.40
11 Milk fresh	7.1070	120.50	120.51	111.21	-	0.01	+	8.35
12 Milk products	0.6407	123.00	122.98	114.10	+	0.02	+	7.80
13 Milk powder	0.3106	127.12	125.19	112.51	+	1.54	+	12.99
14 Eggs	0.5083	115.09	156.28	128.31	-	26.36	-	10.30
15 Butter	0.0932	163.19	157.50	113.86	+	3.61	+	43.33
16 Mustard oil	0.0120	123.55	118.51	106.98	+	4.25	+	15.49
17 Cooking oil	1.1016	146.75	133.08	115.65	+	10.27	+	26.89
18 Vegetable ghee	1.0324	151.57	133.96	113.48	+	13.15	+	33.57
19 Dry fruits	0.3299	133.88	133.41	118.16	+	0.35	+	13.30
20 Fresh fruits	1.4363	120.53	115.72	118.43	+	4.16	+	1.77
21 Pulse masoor	0.1624	97.16	96.80	79.92	+	0.37	+	21.57
22 Pulse moong	0.1697	143.92	140.72	78.39	+	2.27	+	<u>83.59</u>
23 Pulse mash	0.1152	96.90	95.81	64.15	+	1.14	+	<u>51.05</u>
24 Pulse gram	0.1660	129.03	132.12	104.06	-	2.34	+	24.00
25 Gram whohe	0.0912	129.28	128.87	119.69	+	0.32	+	8.01
26 Beans	0.0408	135.69	130.61	109.71	+	3.89	+	23.68
27 Potatoes	0.4496	156.74	179.98	85.54	-	12.91	+	<u>83.24</u>
28 Onions	0.5928	126.70	138.91	62.49	-	8.79	+	<u>102.7</u>
29 Tomatoes	0.3459	99.67	250.86	255.81	-	<u>60.27</u>	-	<u>61.04</u>
30 Fresh vegetables	1.5306	156.27	176.54	96.53	-	11.48	+	<u>61.89</u>
31 Sugar	1.1130	128.89	118.85	94.15	+	8.45	+	36.90
32 Gur	0.0379	137.37	137.23	102.99	+	0.10	+	33.38
33 Honey	0.1017	118.40	116.76	111.19	+	1.40	+	6.48
34 Sweetmeat	0.3535	137.53	135.78	122.08	+	1.29	+	12.66
35 Ice cream	0.1044	125.04	124.87	112.37	+	0.14	+	11.28
36 Condiments and Spices	1.3340	159.13	155.47	126.71	+	2.35	+	25.59
37 Dessert preparation	0.0419	118.96	118.23	111.59	+	0.62	+	6.60
38 Tea	0.8427	140.74	140.63	128.34	+	0.08	+	9.66
39 Beverages	0.8906	122.25	122.14	109.82	+	0.09	+	11.32
<b>Alcoholic Beverages, Tobacco</b>	<b>0.8540</b>	<b>143.51</b>	<b>143.25</b>	<b>121.97</b>	+	<b>0.18</b>	+	<b>17.66</b>
40 Cigarettes	0.7167	134.72	134.71	110.98	+	0.01	+	21.39
41 Pan prepared	0.1373	189.39	187.81	179.37	+	0.84	+	5.59
<b>Clothing and footwear</b>	<b>8.0096</b>	<b>127.81</b>	<b>127.13</b>	<b>116.65</b>	+	<b>0.53</b>	+	<b>9.57</b>
42 Cotton cloth	2.2227	127.83	127.02	112.61	+	0.64	+	13.52
43 Woolen cloth	0.8361	125.76	124.66	109.60	+	0.88	+	14.74
44 Readymade garments	1.3196	128.66	127.58	121.32	+	0.85	+	6.05
45 Woolen readymade garments	0.4307	126.89	126.89	116.46	+	0.00	+	8.96
46 Tailoring	1.0741	136.79	136.53	125.90	+	0.19	+	8.65
47 Hosiry	0.4070	127.40	125.84	117.39	+	1.24	+	8.53
48 Dopatta	0.1713	122.87	121.05	110.90	+	1.50	+	10.79
49 Cleaning and laundring	0.0665	130.41	129.91	119.62	+	0.38	+	9.02
50 Footware	1.4816	122.51	122.49	116.19	+	0.02	+	5.44
<b>Housing, water, Elec., Gas an</b>	<b>27.0332</b>	<b>130.34</b>	<b>133.62</b>	<b>121.89</b>	-	<b>2.45</b>	+	<b>6.93</b>
51 House rent	19.2558	129.68	129.68	122.77	+	0.00	+	5.63
52 Construcion input items	0.3765	142.64	142.98	121.02	-	0.24	+	17.86
53 Construction wage rates	0.2025	147.66	146.43	134.18	+	0.84	+	10.05
54 Water supply	0.5269	131.89	131.54	119.08	+	0.27	+	10.76
55 Garbage collection	0.1064	154.80	154.80	143.43	+	0.00	+	7.93
56 Electricity charges	4.5562	108.04	124.87	112.65	-	13.48	-	4.09
57 Gas charges	1.0807	216.94	216.94	140.11	+	0.00	+	<u>54.84</u>
58 Liquified Hydrocarbons	0.5064	160.89	186.07	138.42	-	13.53	+	16.23
59 Solid Fuel	0.4218	115.58	114.22	108.47	+	1.19	+	6.55
<b>Furnishing and household equi</b>	<b>4.0937</b>	<b>127.57</b>	<b>126.84</b>	<b>115.99</b>	+	<b>0.58</b>	+	<b>9.98</b>

**Annexure A:CPI (Urban) Index Numbers by Commodity Groups & Commodities (2015-16=100)**

Item and Specification	Weight	Index Numbers			% Change in Feb 2020 over	
		Feb 20	Jan 20	Feb 19	Jan 2020	Feb 2019
60 Furniture and furnishing	0.4750	128.23	127.19	116.53	+ 0.82	+ 10.04
61 Carpets	0.0308	110.97	107.45	104.66	+ 3.28	+ 6.03
62 Household textiles	0.3420	125.08	124.51	120.27	+ 0.46	+ 4.00
63 Household equipments	1.0032	125.99	125.47	114.39	+ 0.41	+ 10.14
64 Plastic products	0.0536	116.63	115.88	111.93	+ 0.65	+ 4.20
65 Major tools & equipments	0.0084	119.93	119.44	111.47	+ 0.41	+ 7.59
66 Washing soap/detergents/match	1.4112	128.04	127.18	116.81	+ 0.68	+ 9.61
67 Household servant	0.7695	130.96	130.45	115.12	+ 0.39	+ 13.76
<b>Health</b>	<b>2.3098</b>	<b>138.29</b>	<b>137.89</b>	<b>123.86</b>	<b>+ 0.29</b>	<b>+ 11.65</b>
68 Drugs and medicines	1.0735	138.19	137.56	116.30	+ 0.46	+ 18.82
69 Therapeutic Appliances and Eq	0.0054	107.17	107.01	107.01	+ 0.15	+ 0.15
70 Doctor (MBBS) clinic fee	0.4044	163.48	163.19	145.08	+ 0.18	+ 12.68
71 Dental services	0.0156	116.23	115.98	117.09	+ 0.22	- 0.73
72 Medical tests	0.2367	124.15	123.91	118.30	+ 0.19	+ 4.95
73 Hospitals services	0.5742	127.47	127.35	125.67	+ 0.09	+ 1.43
<b>Transport</b>	<b>6.1368</b>	<b>146.55</b>	<b>146.34</b>	<b>122.22</b>	<b>+ 0.14</b>	<b>+ 19.91</b>
74 Motor vehicles	0.8097	146.45	146.36	125.06	+ 0.06	+ 17.10
75 Motor vehicle accessories	0.1941	127.55	126.72	114.78	+ 0.65	+ 11.13
76 Motor fuel	2.9088	161.97	161.69	127.72	+ 0.17	+ 26.82
77 Mechanical services	0.4290	129.02	128.99	114.72	+ 0.02	+ 12.47
78 Motor vehicle tax	0.0482	126.72	126.72	124.01	+ 0.00	+ 2.19
79 Transport services	1.7470	127.89	127.76	114.38	+ 0.10	+ 11.81
<b>Communication</b>	<b>2.3536</b>	<b>108.22</b>	<b>108.19</b>	<b>102.82</b>	<b>+ 0.03</b>	<b>+ 5.25</b>
80 Postal services	0.0190	147.05	147.05	147.05	+ 0.00	+ 0.00
81 Communication apparatus	0.4524	118.73	118.58	108.09	+ 0.13	+ 9.84
82 Communication Services	1.8822	105.30	105.30	101.11	+ 0.00	+ 4.14
<b>Recreation and culture</b>	<b>1.7301</b>	<b>117.38</b>	<b>117.24</b>	<b>110.59</b>	<b>+ 0.12</b>	<b>+ 6.14</b>
83 Recreation and culture	0.6478	108.80	108.56	107.10	+ 0.22	+ 1.59
84 Text books	0.6655	117.06	117.06	106.34	+ 0.00	+ 10.08
85 Newspapers	0.0716	151.55	151.55	145.89	+ 0.00	+ 3.88
86 stationery	0.3452	126.99	126.74	118.00	+ 0.20	+ 7.62
<b>Education</b>	<b>4.8807</b>	<b>144.71</b>	<b>144.71</b>	<b>134.63</b>	<b>+ 0.00</b>	<b>+ 7.49</b>
87 Education	4.8807	144.71	144.71	134.63	+ 0.00	+ 7.49
<b>Restaurants and hotels</b>	<b>7.4050</b>	<b>128.88</b>	<b>127.33</b>	<b>119.62</b>	<b>+ 1.22</b>	<b>+ 7.74</b>
88 Readymade food	5.5235	127.90	125.84	117.78	+ 1.64	+ 8.59
89 Marriage Hall Charges	1.7514	133.19	133.14	126.03	+ 0.04	+ 5.68
90 Accommodation Services	0.1301	112.40	112.40	111.78	+ 0.00	+ 0.55
<b>Misc. goods and services</b>	<b>4.7720</b>	<b>134.20</b>	<b>133.78</b>	<b>121.88</b>	<b>+ 0.31</b>	<b>+ 10.11</b>
91 Personal Grooming Services	0.8001	124.19	124.01	116.43	+ 0.15	+ 6.66
92 Electrical Appliances for Per	0.0465	116.78	116.78	114.30	+ 0.00	+ 2.17
93 Appliances/Articles/Products	2.9807	126.55	125.91	117.13	+ 0.51	+ 8.04
94 Personal Effects n.e.c.	0.9447	167.65	167.73	141.89	- 0.05	+ 18.15

**Annexure B:CPI (Rural) Index Numbers by Commodity Groups & Commodities (2015-16=100)**

Item and Specification	Weight	Index Numbers			% Change in Feb 2020 over			
		Feb 20	Jan 20	Feb 19	Jan 2020	Feb 2019		
<b>General</b>	<b>100.0000</b>	<b>132.13</b>	<b>133.42</b>	<b>115.68</b>	-	<b>0.97</b>	+	<b>14.22</b>
<b>Food and non-alcoholic Bevera</b>	<b>40.8668</b>	<b>134.17</b>	<b>136.89</b>	<b>111.23</b>	-	<b>1.99</b>	+	<b>20.62</b>
01 Wheat	3.4736	141.48	139.20	105.82	+	1.64	+	33.70
02 Wheat Flour	3.4297	123.34	127.91	102.18	-	3.57	+	20.71
03 Wheat Products	0.1068	124.91	124.43	111.10	+	0.39	+	12.43
04 Besan	0.0728	132.22	129.68	110.62	+	1.96	+	19.53
05 Rice	1.5501	161.03	160.27	144.34	+	0.47	+	11.56
06 Bakery and Confectionary	0.3702	124.81	121.76	112.04	+	2.50	+	11.40
07 Nimco	0.0774	116.83	116.83	107.47	+	0.00	+	8.71
08 Meat	1.7146	142.49	142.46	130.13	+	0.02	+	9.50
09 Chicken	1.4641	129.79	122.72	107.01	+	5.76	+	21.29
10 Fish	0.2640	125.71	126.95	118.86	-	0.98	+	5.76
11 Milk fresh	10.3803	122.63	122.46	113.31	+	0.14	+	8.23
12 Milk products	0.9624	124.29	123.55	115.16	+	0.60	+	7.93
13 Milk powder	0.1062	121.90	119.50	105.11	+	2.01	+	15.97
14 Eggs	0.5665	118.40	148.30	125.07	-	20.16	-	5.33
15 Butter	0.3333	127.23	126.27	117.10	+	0.76	+	8.65
16 Mustard oil	0.0136	129.10	127.03	111.97	+	1.63	+	15.30
17 Cooking oil	0.6011	152.48	148.71	116.37	+	2.54	+	31.03
18 Vegetable ghee	2.3764	158.97	149.64	120.03	+	6.23	+	32.44
19 Dry fruits	0.2496	138.70	138.31	125.52	+	0.28	+	10.50
20 Fresh fruits	1.4505	119.31	115.21	108.10	+	3.56	+	10.37
21 Pulse Masoor	0.2076	103.44	99.20	81.00	+	4.27	+	27.70
22 Pulse Moong	0.2510	155.08	149.20	81.51	+	3.94	+	<u>90.26</u>
23 Pulse Mash	0.1465	98.70	93.88	67.05	+	5.13	+	47.20
24 Pulse Gram	0.2751	128.91	130.84	103.55	-	1.48	+	24.49
25 Gram Whole	0.1116	127.67	126.72	119.09	+	0.75	+	7.20
26 Beans	0.0896	145.24	141.02	116.59	+	2.99	+	24.57
27 Potatoes	0.7437	167.52	198.08	80.65	-	15.43	+	<u>107.7</u>
28 Onions	0.8965	118.67	133.93	60.70	-	11.39	+	<u>95.50</u>
29 Tomatoes	0.5069	112.12	264.13	204.82	-	<u>57.55</u>	-	45.26
30 Fresh Vegetables	2.0947	161.31	187.44	94.95	-	13.94	+	<u>69.89</u>
31 Sugar	2.0296	130.07	120.44	96.21	+	8.00	+	35.19
32 Gur	0.1522	132.59	140.36	97.66	-	5.54	+	35.77
33 Honey	0.0296	122.50	120.63	117.95	+	1.55	+	3.86
34 Sweetmeat	0.3967	125.39	123.65	111.97	+	1.41	+	11.99
35 Ice Cream	0.0568	122.09	122.09	113.98	+	0.00	+	7.12
36 Condiments and Spices	1.4919	153.42	144.75	113.95	+	5.99	+	34.64
37 Dessert Preparation	0.0133	114.56	114.25	108.23	+	0.27	+	5.85
38 Tea	1.2566	137.87	137.69	125.44	+	0.13	+	9.91
39 Beverages	0.5537	122.92	122.70	108.15	+	0.18	+	13.66
<b>Alcoholic Beverages, Tobacco</b>	<b>1.2786</b>	<b>128.99</b>	<b>128.52</b>	<b>108.06</b>	+	<b>0.37</b>	+	<b>19.37</b>
40 Cigarettes	1.2364	128.15	127.77	106.93	+	0.30	+	19.84
41 Pan Prepared	0.0422	153.63	150.48	141.17	+	2.09	+	8.83
<b>Clothing and footwear</b>	<b>9.4826</b>	<b>134.33</b>	<b>133.17</b>	<b>121.23</b>	+	<b>0.87</b>	+	<b>10.81</b>
42 Cotton Cloth	2.8381	144.86	143.00	126.51	+	1.30	+	14.50
43 Woolen Cloth	1.0959	124.64	124.55	113.42	+	0.07	+	9.89
44 Readymade Garments	1.1345	131.01	130.66	117.34	+	0.27	+	11.65
45 Woolen Readymade Garments	0.5401	130.27	128.76	119.13	+	1.17	+	9.35
46 Tailoring	1.2999	133.68	133.07	126.53	+	0.46	+	5.65
47 Hosiry	0.4322	148.55	145.99	129.78	+	1.75	+	14.46
48 Dopatta	0.2078	129.82	128.18	114.68	+	1.28	+	13.20
49 Cleaning and Laundering	0.0176	126.52	123.77	113.29	+	2.22	+	11.68
50 Footware	1.9165	125.17	124.07	116.05	+	0.89	+	7.86
<b>Housing, water, Elec., Gas an</b>	<b>18.4853</b>	<b>126.39</b>	<b>129.64</b>	<b>118.60</b>	-	<b>2.51</b>	+	<b>6.57</b>
51 House Rent	8.6110	129.42	129.42	121.76	+	0.00	+	6.29
52 Construction Input Items	0.6306	118.56	120.19	111.18	-	1.36	+	6.64
53 Construction Wage Rates	0.2526	145.09	144.47	130.55	+	0.43	+	11.14
54 Water Supply	0.0645	158.09	158.09	121.10	+	0.00	+	30.55
55 Garbage Collection	0.0080	132.21	132.21	130.71	+	0.00	+	1.15
56 Electricity Charges	3.4431	108.04	124.87	112.65	-	13.48	-	4.09
57 Liquified Hydrocarbons	0.9994	148.78	159.46	132.05	-	6.70	+	12.67
58 Solid Fuel	4.4761	129.24	127.15	114.43	+	1.64	+	12.94
<b>Furnishing and household equi</b>	<b>4.1031</b>	<b>126.20</b>	<b>125.42</b>	<b>114.82</b>	+	<b>0.62</b>	+	<b>9.91</b>
59 Furniture and Furnishing	0.5786	128.55	127.26	115.03	+	1.01	+	11.75



**Annexure B:CPI (Rural) Index Numbers by Commodity Groups & Commodities (2015-16=100)**

Item and Specification	Weight	Index Numbers			% Change in Feb 2020 over	
		Feb 20	Jan 20	Feb 19	Jan 2020	Feb 2019
60 Household Textiles	0.4382	124.99	123.93	116.44	+ 0.86	+ 7.34
61 Household Equipments	1.2774	131.43	130.86	121.12	+ 0.44	+ 8.51
62 Plastic Products	0.0776	135.69	134.21	123.52	+ 1.10	+ 9.85
63 Major Tools and Equipments	0.0324	114.44	114.44	111.62	+ 0.00	+ 2.53
64 Washing Soaps, Detergents and	1.6989	121.57	120.90	109.27	+ 0.55	+ 11.26
<b>Health</b>	<b>3.5141</b>	<b>137.89</b>	<b>136.90</b>	<b>122.64</b>	<b>+ 0.72</b>	<b>+ 12.43</b>
65 Drugs and Medicines	1.5792	139.81	139.18	121.25	+ 0.45	+ 15.31
66 Doctor Clinic Fee	0.5128	158.77	154.44	130.49	+ 2.80	+ 21.67
67 Dental Services	0.0181	113.82	113.82	108.66	+ 0.00	+ 4.75
68 Medical Tests	0.3967	138.31	138.31	122.88	+ 0.00	+ 12.56
69 Hospitals Services	1.0073	124.52	124.27	120.98	+ 0.20	+ 2.93
<b>Transport</b>	<b>5.5580</b>	<b>144.02</b>	<b>143.36</b>	<b>122.08</b>	<b>+ 0.46</b>	<b>+ 17.97</b>
70 Motor Vehicles	0.7305	127.18	127.13	113.88	+ 0.04	+ 11.68
71 Motor Vehicles Accessories	0.1572	133.68	132.43	119.11	+ 0.94	+ 12.23
72 Motor Fuels	2.4932	160.80	160.60	126.25	+ 0.12	+ 27.37
73 Mechanical Services	0.3645	148.76	148.24	143.90	+ 0.35	+ 3.38
74 Motor Vehicle Tax	0.0174	127.98	127.98	127.98	+ 0.00	+ 0.00
75 Transport Services	1.7952	127.67	126.13	115.41	+ 1.22	+ 10.62
<b>Communication</b>	<b>1.9940</b>	<b>104.72</b>	<b>104.70</b>	<b>103.06</b>	<b>+ 0.02</b>	<b>+ 1.61</b>
76 Postal Services	0.0070	149.43	149.43	113.66	+ 0.00	+ 31.47
77 Communication Apparatus	0.3362	118.95	118.85	115.53	+ 0.08	+ 2.96
78 Communication Services	1.6508	101.63	101.63	100.47	+ 0.00	+ 1.15
<b>Recreation and culture</b>	<b>1.3764</b>	<b>122.15</b>	<b>122.07</b>	<b>113.84</b>	<b>+ 0.07</b>	<b>+ 7.30</b>
79 Recreation and Culture	0.4763	127.19	126.57	117.63	+ 0.49	+ 8.13
80 Text Books	0.5047	109.72	110.23	102.23	- 0.46	+ 7.33
81 Newspapers	0.0230	161.68	161.68	161.68	+ 0.00	+ 0.00
82 Stationery	0.3724	130.12	129.91	121.76	+ 0.16	+ 6.87
<b>Education</b>	<b>2.1342</b>	<b>133.12</b>	<b>132.56</b>	<b>124.26</b>	<b>+ 0.42</b>	<b>+ 7.13</b>
83 Education	2.1342	133.12	132.56	124.26	+ 0.42	+ 7.13
<b>Restaurants and hotels</b>	<b>6.1895</b>	<b>131.63</b>	<b>129.84</b>	<b>119.30</b>	<b>+ 1.38</b>	<b>+ 10.34</b>
84 Readymade Food	3.8001	135.66	132.73	122.21	+ 2.21	+ 11.01
85 Marriage Hall Charges	2.2525	126.67	126.67	115.47	+ 0.00	+ 9.70
86 Accommodation Services	0.1369	101.59	101.59	101.59	+ 0.00	+ 0.00
<b>Misc. goods and services</b>	<b>5.0174</b>	<b>134.74</b>	<b>133.16</b>	<b>118.85</b>	<b>+ 1.19</b>	<b>+ 13.37</b>
87 Personal Grooming Services	1.5363	137.45	134.41	122.09	+ 2.26	+ 12.58
88 Appliances/Articles/Products	2.2746	119.29	118.05	110.74	+ 1.05	+ 7.72
89 Personal Effects n.e.c.	1.2065	160.42	160.05	130.01	+ 0.23	+ 23.39

## Annexure C: Wholesale Price Indices by Major Groups &amp; Commodities

(2015-16=100)

Item and Specification	Weight	Index Numbers			% Change in Feb 2020 over			
		Feb 20	Jan 20	Feb 19	Jan 2020	Feb 2019		
<b>General</b>	<b>100.0000</b>	<b>143.18</b>	<b>144.34</b>	<b>127.15</b>	-	<b>0.80</b>	+	<b>12.61</b>
<b>Agriculture Forestry &amp; Fisher</b>	<b>25.7674</b>	<b>140.02</b>	<b>142.32</b>	<b>122.95</b>	-	<b>1.62</b>	+	<b>13.88</b>
001 Wheat	0.6297	129.33	137.96	103.39	-	6.26	+	25.09
002 Maize	0.6764	145.94	146.93	126.23	-	0.67	+	15.61
003 Rice	2.4413	145.89	146.33	131.19	-	0.30	+	11.21
004 Sorghum / Jowar	0.0214	152.25	163.97	126.77	-	7.15	+	20.10
005 Millet / Bajra	0.0374	120.58	124.73	111.61	-	3.33	+	8.04
006 Vegetables	1.2441	177.08	218.12	114.05	-	18.82	+	<u>55.27</u>
007 Fresh Fruits	1.5144	126.06	120.68	117.66	+	4.46	+	7.14
008 Dry Fruits	0.2478	127.54	128.77	118.50	-	0.96	+	7.63
009 Cotton Seeds	1.1511	136.07	132.51	94.84	+	2.69	+	43.47
010 Other Oil Seeds	0.0722	136.82	138.87	114.11	-	1.48	+	19.90
011 Edible Roots / Potatoes	0.2540	211.38	233.77	97.76	-	9.58	+	<u>116.2</u>
012 Stimulant & Spice Crops	0.1634	288.43	245.29	141.13	+	17.59	+	<u>104.3</u>
013 Pulses	0.4901	122.04	128.53	101.35	-	5.05	+	20.41
014 Sugar Crops	1.0725	114.58	114.58	95.52	+	0.00	+	19.95
015 Fibre Crops	5.3169	172.18	170.33	163.95	+	1.09	+	5.02
016 Unmanufactured Tobacco	0.0742	173.28	169.35	150.46	+	2.32	+	15.17
017 Poultry	0.5633	117.36	116.82	102.83	+	0.46	+	14.13
018 Raw Milk from Bovine Animals	7.0279	116.57	116.57	107.64	+	0.00	+	8.30
019 Eggs	0.5034	111.06	152.68	126.87	-	27.26	-	12.46
020 Raw Animal Materials / Wool	0.0351	105.33	105.33	106.84	+	0.00	-	1.41
021 Hides, Skins & Fur Skins, Raw	0.4834	38.89	38.68	45.28	+	0.54	-	14.11
022 Fuel Wood in Logs	0.0179	114.57	114.50	109.58	+	0.06	+	4.55
023 Fish Live Fresh or Chilled	1.7295	160.12	160.22	135.84	-	0.06	+	17.87
<b>Ores/Minerals, Elec., Gas &amp; W</b>	<b>12.0069</b>	<b>162.59</b>	<b>169.13</b>	<b>134.02</b>	-	<b>3.87</b>	+	<b>21.32</b>
024 Coal not Agglomerated	0.7508	82.17	82.17	82.17	+	0.00	+	0.00
025 Natural Gas Liquified	5.7065	198.05	199.50	152.50	-	0.73	+	29.87
026 Salt & Pure Sodium Chloride	0.0584	154.99	154.91	129.29	+	0.05	+	19.88
027 Electrical Energy	5.4912	136.82	149.60	121.95	-	8.54	+	12.19
<b>Food, Beverages, Tobacco, Textil</b>	<b>31.1122</b>	<b>132.60</b>	<b>132.23</b>	<b>119.08</b>	+	<b>0.28</b>	+	<b>11.35</b>
<b>Food Products, Beverages &amp;</b>	<b>20.0718</b>	<b>128.22</b>	<b>127.70</b>	<b>112.42</b>	+	<b>0.41</b>	+	<b>14.05</b>
028 Meat of Animals	3.4559	138.25	138.21	125.41	+	0.03	+	10.24
029 Vegetables & Fruit Juice	0.0058	112.66	112.66	118.14	+	0.00	-	4.64
030 Dried Fruits & Nuts	0.1733	158.57	158.36	142.67	+	0.13	+	11.14
031 Fruit Juices	0.3880	117.89	117.32	107.92	+	0.49	+	9.24
032 Vegetable Oils Refined	1.9242	122.35	121.02	107.97	+	1.10	+	13.32
033 Vegetable Ghee	1.5632	147.49	142.62	115.54	+	3.41	+	27.65
034 Oil Cakes	0.9611	134.30	134.14	120.63	+	0.12	+	11.33
035 Processed Liquid Milk	4.4437	124.33	124.33	113.23	+	0.00	+	9.80
036 Milk & Cream in Solid Form	0.0316	124.10	123.83	108.43	+	0.22	+	14.45
037 Ice Cream	0.0047	117.05	117.05	106.46	+	0.00	+	9.95
038 Dairy Products N.E.C	0.0117	128.70	127.97	116.88	+	0.57	+	10.11
039 Wheat Flour	2.3034	124.44	128.94	103.22	-	3.49	+	20.56
040 Other Cereal Flour	0.0604	128.31	131.89	105.61	-	2.71	+	21.49
041 Sugar Refined	1.7975	128.06	122.41	94.99	+	4.62	+	34.81
042 Chocolate	0.0139	81.57	81.57	66.51	+	0.00	+	22.64
043 Sugar Confectionary	0.0738	115.50	115.50	110.66	+	0.00	+	4.37
044 Coffee & Tea	0.7303	127.64	127.59	116.52	+	0.04	+	9.54
045 Spices	0.1449	141.41	140.42	127.44	+	0.71	+	10.96
046 Other Food Products	0.0336	110.93	110.93	108.26	+	0.00	+	2.47
047 Mineral Water	0.0207	122.47	122.36	111.82	+	0.09	+	9.52
048 Beverages	0.6303	125.01	125.02	117.32	-	0.01	+	6.55
049 Tobacco Products	1.2998	104.23	104.23	104.23	+	0.00	+	0.00
<b>Textiles &amp; Apparels</b>	<b>10.3289</b>	<b>142.53</b>	<b>142.44</b>	<b>132.76</b>	+	<b>0.06</b>	+	<b>7.36</b>
050 Cotton Yarn	5.2491	164.84	164.84	152.81	+	0.00	+	7.87
051 Nylon Yarn	0.1719	95.24	95.24	95.24	+	0.00	+	0.00
052 Blended Yarn	0.1689	120.22	120.44	116.14	-	0.18	+	3.51
053 Woven Fabrics	0.0128	133.81	133.81	121.08	+	0.00	+	10.51
054 Cotton Fabrics	0.6343	118.01	117.92	106.70	+	0.08	+	10.60
055 Other Fabrics	1.1016	112.30	112.30	107.55	+	0.00	+	4.42
056 Silk & Reyon Fabrics	0.7350	117.76	117.63	112.65	+	0.11	+	4.54
057 Towels	0.1235	117.41	117.41	110.24	+	0.00	+	6.50
058 Blankets	0.0029	96.44	96.44	95.81	+	0.00	+	0.66
059 Bed Sheets	0.0913	112.64	112.64	107.31	+	0.00	+	4.97

## Annexure C: Wholesale Price Indices by Major Groups &amp; Commodities

(2015-16=100)

Item and Specification	Weight	Index Numbers			% Change in Feb 2020 over	
		Feb 20	Jan 20	Feb 19	Jan 2020	Feb 2019
060 Quilts	0.0019	109.35	109.35	107.03	+ 0.00	+ 2.17
061 Woolen Carpets	0.0383	137.01	137.01	122.99	+ 0.00	+ 11.40
062 Synthetic Carpets	0.0566	115.72	115.72	101.85	+ 0.00	+ 13.62
063 Hosiery Products	0.8832	121.90	121.87	116.35	+ 0.02	+ 4.77
064 Readymade Garments	1.0576	131.16	130.41	118.68	+ 0.58	+ 10.52
<b>Leather Products</b>	<b>0.7115</b>	<b>111.94</b>	<b>111.94</b>	<b>108.48</b>	<b>+ 0.00</b>	<b>+ 3.19</b>
065 Leather Without Hair	0.2973	105.65	105.65	105.39	+ 0.00	+ 0.25
066 Other Leather N.E.C	0.2567	111.77	111.77	102.51	+ 0.00	+ 9.03
067 Footwears	0.1575	124.07	124.07	124.07	+ 0.00	+ 0.00
<b>Other Transportable Goods</b>	<b>22.3979</b>	<b>155.06</b>	<b>154.62</b>	<b>143.95</b>	<b>+ 0.28</b>	<b>+ 7.72</b>
068 Timber	0.0165	111.96	111.96	111.17	+ 0.00	+ 0.71
069 Printing Paper	0.4279	130.70	130.70	107.74	+ 0.00	+ 21.31
070 Hard Board	0.1579	146.50	146.50	146.50	+ 0.00	+ 0.00
071 Motor Spirit	1.6268	165.08	165.08	126.82	+ 0.00	+ 30.17
072 Diesel Oil	5.4849	171.39	171.39	148.11	+ 0.00	+ 15.72
073 Kerosine Oil	0.2151	195.04	195.04	161.42	+ 0.00	+ 20.83
074 Furnace Oil	3.2664	234.47	228.12	245.72	+ 2.78	- 4.58
075 Mobil Oil	0.7114	122.31	120.04	112.17	+ 1.89	+ 9.04
076 Chemicals	1.7720	129.69	129.69	122.45	+ 0.00	+ 5.91
077 Dyeing Material	0.1539	146.16	146.16	103.21	+ 0.00	+ 41.61
078 Fertilizers	2.8657	100.80	107.69	99.66	- 6.40	+ 1.14
079 Pesticides	0.2763	111.24	111.16	105.07	+ 0.07	+ 5.87
080 Insecticides	0.1276	111.49	111.24	109.63	+ 0.22	+ 1.70
081 Paints & Varnishes	0.1916	124.68	124.68	118.74	+ 0.00	+ 5.00
082 Medicines	1.1428	144.86	140.55	116.75	+ 3.07	+ 24.08
083 Soaps & Detergents	0.8168	109.88	109.81	110.88	+ 0.06	- 0.90
084 Auto Tyres	0.2703	121.54	121.33	110.53	+ 0.17	+ 9.96
085 Plastic Products	0.4550	108.15	108.15	105.62	+ 0.00	+ 2.40
086 Glass sheets	0.2089	145.21	145.21	140.04	+ 0.00	+ 3.69
087 Other Glass Articles	0.1635	132.20	132.20	121.45	+ 0.00	+ 8.85
088 Ceramics & Sanitary Fixture	0.0244	123.86	123.86	114.27	+ 0.00	+ 8.39
089 Bricks, Blocks & Tiles	0.1566	120.61	119.30	107.72	+ 1.10	+ 11.97
090 Cement	1.8145	114.72	113.78	113.15	+ 0.83	+ 1.39
091 Bed Foam	0.0006	145.96	139.56	111.49	+ 4.59	+ 30.92
092 Matches	0.0505	1170.1	1170.1	1127.3	+ 0.00	+ 3.79
<b>Metal Product, Machinery &amp; Eq</b>	<b>8.7156</b>	<b>133.07</b>	<b>132.99</b>	<b>115.70</b>	<b>+ 0.06</b>	<b>+ 15.01</b>
093 Steel Bar & Sheets	1.4615	149.47	155.88	133.80	- 4.11	+ 11.71
094 Pipe Fittings	0.0780	141.32	141.32	117.12	+ 0.00	+ 20.66
095 Steel Products	0.3879	133.35	133.35	118.55	+ 0.00	+ 12.48
096 Engines & Motors	0.0046	107.29	107.29	107.29	+ 0.00	+ 0.00
097 Vacuum Pumps	0.0155	107.56	107.56	107.56	+ 0.00	+ 0.00
098 Air Conditioners	0.0049	112.46	112.46	102.84	+ 0.00	+ 9.35
099 Cultivators	0.0551	103.75	103.75	87.11	+ 0.00	+ 19.10
100 Chuff Cutter	0.1293	107.14	104.29	102.86	+ 2.73	+ 4.16
101 Tractors	0.0028	109.22	109.22	109.22	+ 0.00	+ 0.00
102 Lathe Machines	0.0525	168.06	168.06	144.32	+ 0.00	+ 16.45
103 Concrete Mixture	0.0107	100.00	100.00	100.00	+ 0.00	+ 0.00
104 Fridge, WashM, SewM, Fans, Iron	1.1645	148.68	144.57	122.84	+ 2.84	+ 21.04
105 Electric Wires	0.0912	125.73	125.73	115.52	+ 0.00	+ 8.84
106 Lighting Equipments	1.4431	116.71	113.35	106.55	+ 2.96	+ 9.54
107 Radio & Television	0.1843	100.59	100.59	96.80	+ 0.00	+ 3.92
108 Motor Vehicles	0.0244	156.02	156.02	126.63	+ 0.00	+ 23.21
109 Motorcycles	0.2570	120.09	120.09	115.97	+ 0.00	+ 3.55
110 Bicycles	3.3483	131.36	131.36	110.47	+ 0.00	+ 18.91