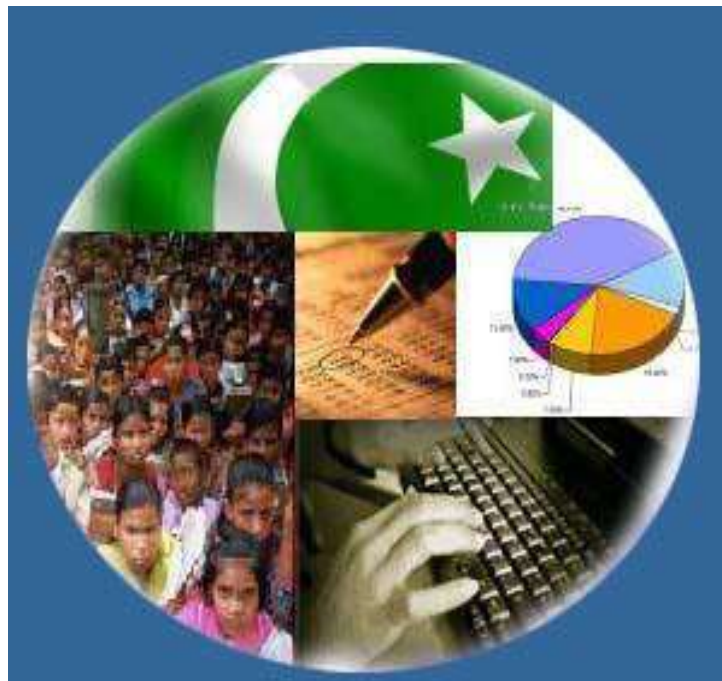




Monthly Review on Price Indices



August, 2021
(Base Year 2015-16)

Government of Pakistan
Ministry of Planning, Development & Special Initiatives
Pakistan Bureau of Statistics
Islamabad

Inflation in Brief

- CPI inflation General**, increased by 8.4% on year-on-year basis in August 2021 as compared to an increase of 8.4% in the previous month and 8.2% in August 2020. On month-on-month basis, it increased by 0.6% in August 2021 as compared to increase of 1.3% in the previous month and an increase of 0.6% in August 2020.
- CPI inflation Urban**, increased by 8.3% on year-on-year basis in August 2021 as compared to an increase of 8.7% in the previous month and 7.1% in August 2020. On month-on-month basis, it increased by 0.5% in August 2021 as compared to increase of 1.29% in the previous month and an increase of 0.8% in August 2020.
- CPI inflation Rural**, increased by 8.4% on year-on-year basis in August 2021 as compared to an increase of 8.0% in the previous month and 9.9% in August 2020. On month-on-month basis, it increased by 0.7% in August 2021 as compared to increase of 1.4% in the previous month and an increase of 0.4% in August 2020.
- SPI inflation** on YoY increased by 15.9% in August 2021 as compared to an increase of 16.2% a month earlier and an increase of 11.7% in August 2020. On MoM basis, it increased by 0.7% in August 2021 as compared to increase of 1.8% a month earlier and an increase of 0.9% in August 2020.
- WPI inflation** on YoY basis increased by 17.1% in August 2021 as compared to an increase of 17.3% a month earlier and an increase of 3.3% in August 2020. WPI inflation on MoM basis increased by 1.2% in August 2021 as compared to an increase of 2.3% a month earlier and an increase of 1.3% in corresponding month i.e. August 2020.
- Figures 1 and 2 show graphically the yearly data of Table 1.a for Urban and Rural CPI while Table 1.1 shows "Period Average" and "YoY" percent changes in indices of three years.

Table 1.a General Inflation (%) (Base 2015-16)																		
PERIOD	CPI														SPI**		WPI	
	General						Food				Non-Food							
	National		Urban		Rural		Urban		Rural		Urban		Rural		YoY	MoM	YoY	MoM
	YoY	MoM	YoY	MoM	YoY	MoM	YoY	MoM	YoY	MoM	YoY	MoM	YoY	MoM				
Oct-19	11.0	1.8	10.9	1.6	11.3	2.2	13.7	1.4	14.6	2.6	9.3	1.7	8.7	1.8	15.1	2.7	13.3	2.0
Nov-19	12.7	1.3	12.1	1.0	13.6	1.9	16.6	2.4	19.3	3.4	9.6	0.2	9.0	0.6	20.2	3.7	11.2	-0.8
Dec-19	12.6	-0.3	12.0	-0.4	13.6	-0.3	16.7	-1.7	19.7	-1.1	9.5	0.4	8.8	0.4	18.1	-2.0	12.4	-0.3
Jan-20	14.6	2.0	13.4	1.7	16.3	2.4	19.5	2.7	23.8	3.4	10.2	1.1	10.5	1.5	18.3	0.5	15.4	1.8
Feb-20	12.4	-1.0	11.2	-1.1	14.2	-1.0	15.2	-1.4	19.7	-1.6	9.1	-0.9	9.8	-0.4	14.5	-0.8	12.7	-0.7
Mar-20	10.2	0.0	9.3	0.1	11.7	-0.1	13.0	0.6	15.5	-0.3	7.3	-0.1	8.5	0.1	11.8	-0.3	9.3	-0.9
Apr-20	8.5	-0.8	7.7	-0.7	9.8	-1.1	10.4	-1.0	12.9	-1.7	6.2	-0.5	7.4	-0.5	9.3	-1.8	4.9	-2.0
May-20	8.2	0.3	7.3	0.3	9.7	0.3	10.6	1.5	13.7	1.4	5.4	-0.4	6.4	-0.5	11.0	2.2	1.5	-2.1
Jun-20	8.6	0.8	7.6	0.7	10.0	1.0	12.9	1.8	15.2	2.0	4.7	0.0	5.8	0.1	11.5	1.4	0.9	-0.3
Jul-20	9.3	2.5	7.8	2.2	11.6	3.0	15.1	3.0	17.8	4.0	3.9	1.7	6.5	2.2	13.7	3.0	3.2	5.4
Aug-20	8.2	0.6	7.1	0.8	9.9	0.4	11.3	-0.3	13.5	-0.9	4.8	1.5	6.8	1.5	11.7	0.9	3.3	1.3
Sep-20	9.0	1.5	7.7	1.3	11.1	2.0	12.4	3.0	15.8	3.8	5.0	0.2	7.2	0.3	12.0	2.1	4.3	1.0
Oct-20	8.9	1.7	7.3	1.3	11.3	2.4	13.9	2.8	17.7	4.3	3.6	0.3	5.8	0.5	12.3	3.0	5.1	2.9
Nov-20	8.3	0.8	7.0	0.6	10.5	1.1	13.0	1.6	16.1	2.0	3.4	0.1	5.5	0.2	9.9	1.1	5.0	-0.9
Dec-20	8.0	-0.7	7.0	-0.3	9.5	-1.2	12.6	-2.1	13.4	-3.4	3.8	0.7	6.1	1.0	9.1	-2.7	5.7	0.3
Jan-21	5.7	-0.2	5.0	-0.2	6.6	-0.3	7.3	-2.1	7.2	-2.2	3.7	1.1	6.1	1.5	7.7	-0.8	6.4	2.5
Feb-21	8.7	1.8	8.6	2.3	8.8	1.1	10.3	1.3	9.1	0.2	7.6	2.8	8.6	2.0	11.9	3.1	9.5	2.2
Mar-21	9.1	0.4	8.7	0.3	9.5	0.5	11.5	1.7	11.1	1.5	7.1	-0.6	8.1	-0.4	18.7	5.7	14.6	3.7
Apr-21	11.1	1.0	11.0	1.3	11.3	0.6	15.7	2.7	14.1	0.9	8.2	0.5	8.9	0.3	21.3	0.4	16.6	-0.4
May-21	10.9	0.1	10.8	0.2	10.9	-0.03	15.3	1.1	12.8	0.2	8.3	-0.3	9.2	-0.3	19.7	0.8	19.4	0.3
Jun-21	9.7	-0.3	9.6	-0.4	9.7	-0.1	11.0	-1.9	9.8	-0.8	8.8	0.5	9.7	0.6	17.6	-0.4	20.9	0.9
Jul-21	8.4	1.3	8.7	1.29	8.0	1.4	9.4	1.5	7.3	1.6	8.2	1.1	8.7	1.2	16.2	1.8	17.3	2.3
Aug-21	8.4	0.6	8.3	0.5	8.4	0.7	10.2	0.5	9.1	0.8	7.2	0.5	7.7	0.6	15.9	0.7	17.1	1.2

** SPI for quintile 1. Digits 0.0* are due to rounding off.

Core inflation (NFNE)

7. Measured by **non-food non-energy Urban** increased by 6.3% on (YoY) basis in August, 2021 as compared to an increase of 6.9% in the previous month and 5.6% in August, 2020. On (MoM) basis, it increased by 0.2% in August, 2021 as compared to increase of 0.8% in previous month, and an increase of 0.7% in corresponding month of last year i.e. August, 2020.
8. Measured by **non-food non-energy Rural** increased by 6.2% on (YoY) basis in August, 2021 as compared to an increase of 6.9% in the previous month and 7.6% in August, 2020. On (MoM) basis, it increased by 0.2% in August, 2021 as compared to an increase of 0.7% in previous month, and an increase of 0.8% in corresponding month of last year i.e. August, 2020.

Core inflation (Trimmed)

9. Measured by 20% **weighted trimmed mean Urban** increased by 7.8% on (YoY) basis in August, 2021 as compared to 9.0% in the previous month and 7.0% in August, 2020. On (MoM) basis, it increased by 0.4% in August, 2021 as compared to an increase of 0.8% in the previous month and an increase of 1.3% in corresponding month of last year i.e. August, 2020.
10. Measured by 20% **weighted trimmed mean Rural** increased by 7.8% on (YoY) basis in August, 2021 as compared to 8.4% in the previous month and by 9.3% in August, 2020. On (MoM) basis, it increased by 0.6% in August, 2021 as compared to an increase of 0.8% in the previous month and an increase of 1.0% in corresponding month of last year i.e. August, 2020.

Table 1.b Core Inflation (%) (Base 2015-16)

Period	NFNE				Trimmed			
	Urban		Rural		Urban		Rural	
	YoY	MoM	YoY	MoM	YoY	MoM	YoY	MoM
Aug-20	5.6	0.7	7.6	0.8	7.0	1.3	9.3	1.0
Sep-20	5.5	0.3	7.8	0.4	7.1	0.4	10.0	0.9
Oct-20	5.6	0.6	7.6	0.6	6.5	0.6	9.5	1.1
Nov-20	5.6	0.3	7.4	0.3	6.3	0.2	9.1	0.4
Dec-20	5.6	0.4	7.7	0.5	6.2	0.4	8.8	0.6
Jan-21	5.4	0.9	7.8	1.1	5.7	1.0	8.1	1.2
Feb-21	6.4	1.1	7.7	0.5	7.9	1.0	9.2	0.5
Mar-21	6.3	0.2	7.3	0.3	8.1	0.4	9.4	0.3
Apr-21	7.0	0.9	7.7	0.7	9.8	0.6	10.6	0.2
May-21	6.8	0.2	7.6	0.3	10.0	0.2	10.3	0.4
Jun-21	6.7	0.3	7.3	0.4	9.4	0.3	9.8	0.6
Jul-21	6.9	0.8	6.9	0.7	9.0	0.8	8.4	0.8
Aug-21	6.3	0.2	6.2	0.2	7.8	0.4	7.8	0.6

Table 1.1 Period Average and Y-o-Y % Change

INDEX	Average July- Aug % changes			Aug over Aug % changes		
	2021-2022	2020-2021	2019-2020	2021-2022	2020-2021	2019-2020
CPI (National)	8.38	8.74	9.44	8.35	8.21	10.49
CPI(Urban)	8.49	7.48	9.67	8.32	7.14	10.64
CPI(Rural)	8.21	10.71	9.07	8.40	9.86	10.27
SPI	16.04	12.72	10.49	15.92	11.73	12.09
WPI	17.21	3.24	13.67	17.15	3.26	14.06

Figure 1: Urban Inflation - YoY, Special Indices

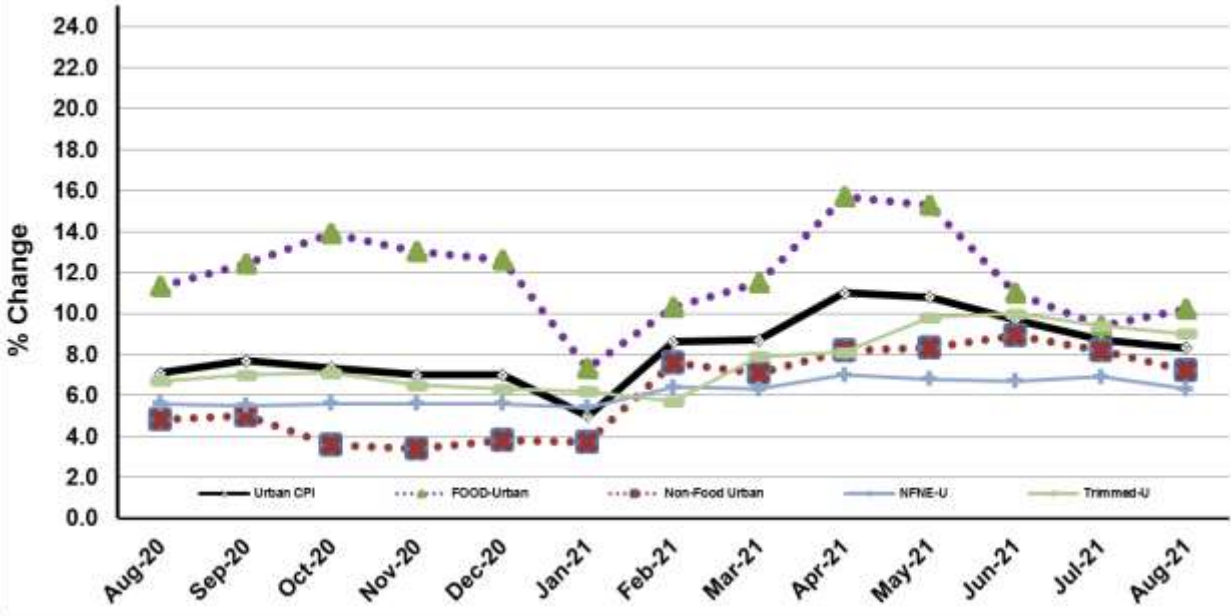


Figure 2: Rural Inflation - YoY, Special Indices

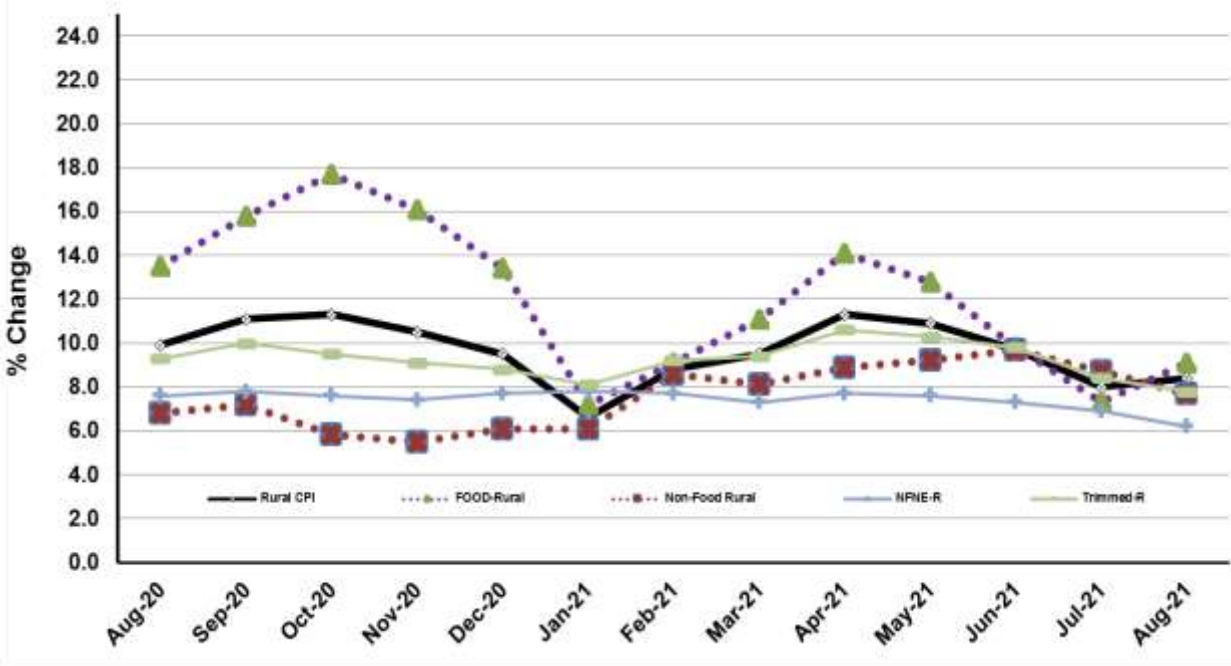


Figure 3: UCPI Inflation MoM, Special Indices

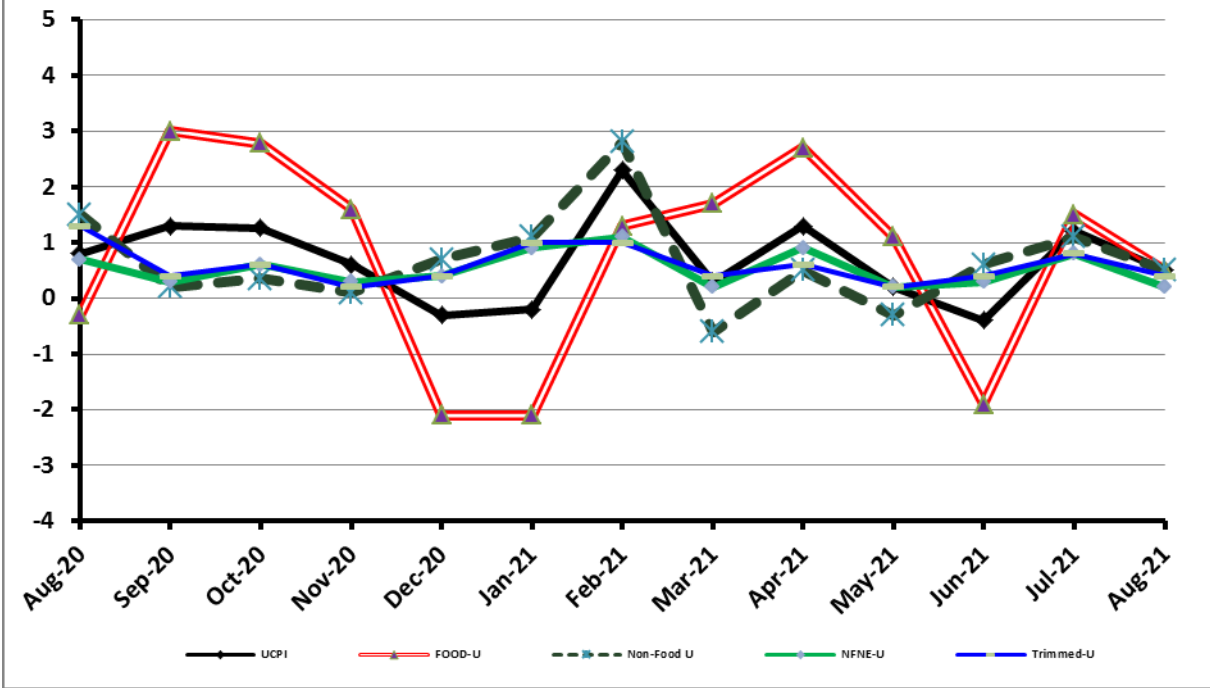
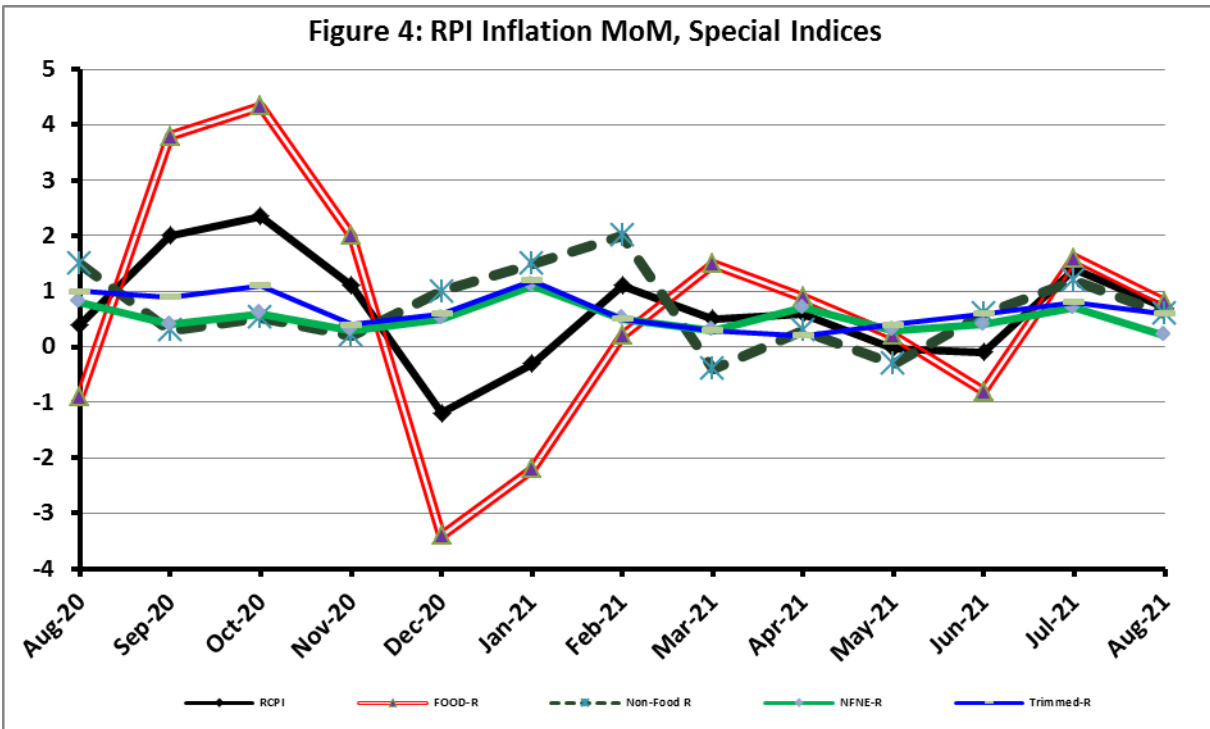
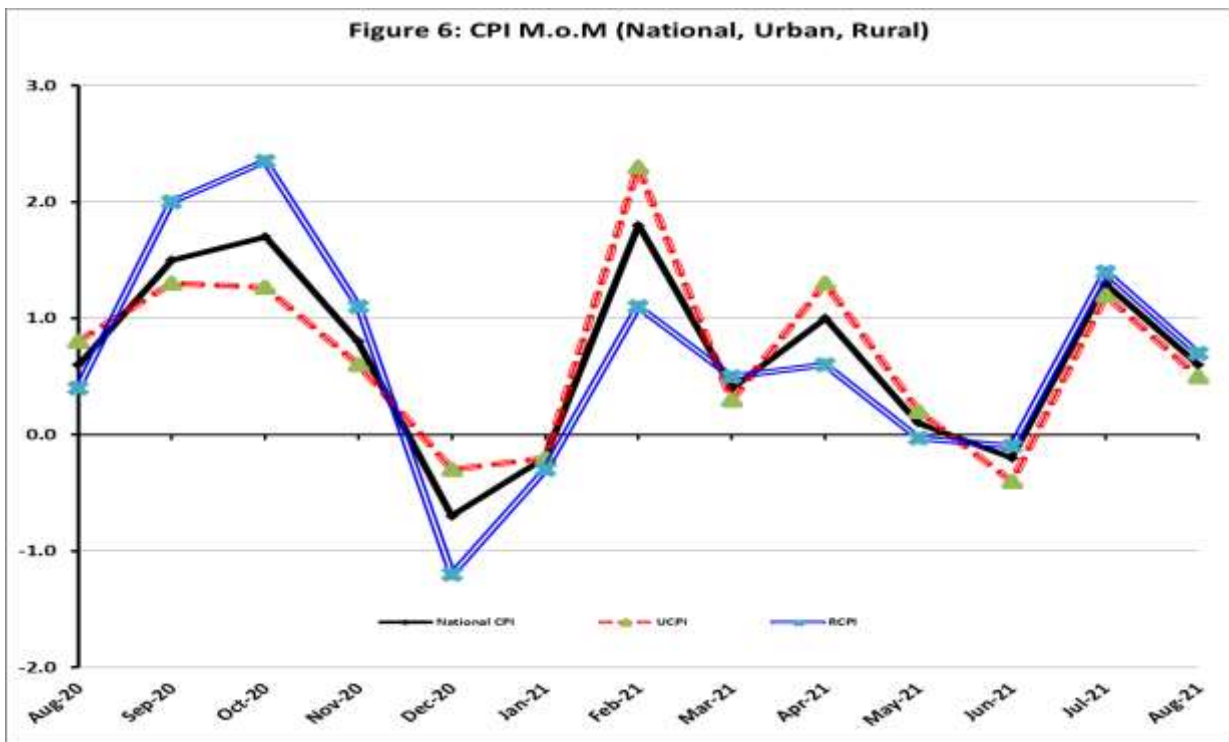
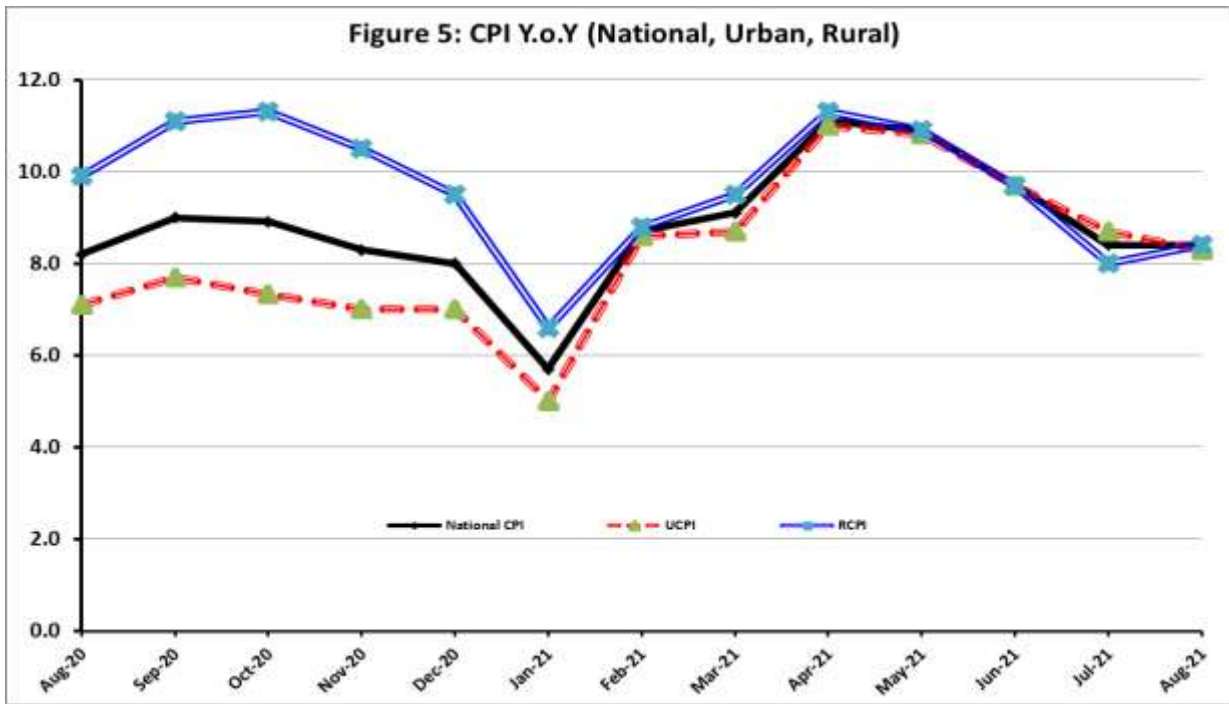


Figure 4: RPI Inflation MoM, Special Indices





I. National Consumer Price Index (N-CPI)

The **National Consumer Price Index** for **August 2021** is **increased** by 0.58% over **July 2021** and increased by 8.35% over corresponding month of the last year i.e. **August 2020**.

Table 1: Consumer Price Index (National) by Group of Commodities and Services (Base 2015-16)									
No	Group	Group Weight (%)	Indices			% Change August 2021 Over		Impact (In % points) August 2021 Over	
			Aug21	July 21	Aug 20	July 21	Aug 20	July 21	Aug 20
	General	100.00	147.61	146.76	136.23	0.58	8.35	0.58	8.35
1.	Food & Non-alcoholic Bev.	34.58	152.71	151.65	138.87	0.70	9.96	0.25	3.51
	<i>Non-perishable Food Items</i>	29.60	153.89	153.27	138.53	0.41	11.09	0.13	3.34
	<i>Perishable Food Items</i>	4.99	145.68	142.01	140.92	2.58	3.38	0.12	0.17
2.	Alcoholic Bev. & Tobacco	1.02	144.69	144.69	141.69	0.00	2.12	0.00	0.02
3.	Clothing & Footwear	8.60	149.80	149.60	137.01	0.13	9.34	0.01	0.81
4.	Housing, Water, Electricity, Gas & Fuels	23.63	143.03	142.08	132.48	0.67	7.96	0.15	1.83
5.	Furnishing & Household Equipment Maintenance	4.10	143.92	143.21	131.28	0.49	9.62	0.02	0.38
6.	Health	2.79	155.18	154.33	143.07	0.55	8.47	0.02	0.25
7.	Transport	5.91	149.96	148.88	138.74	0.73	8.08	0.04	0.49
8.	Communication	2.21	109.96	109.94	106.98	0.02	2.79	0.00	0.05
9.	Recreation & Culture	1.59	129.15	128.17	121.40	0.77	6.39	0.01	0.09
10.	Education	3.79	146.65	145.30	142.47	0.93	2.94	0.03	0.12
11.	Restaurants & Hotels	6.92	144.32	143.85	134.45	0.33	7.34	0.02	0.50
12.	Miscellaneous	4.87	154.76	154.26	146.11	0.32	5.92	0.02	0.31

II. Urban Consumer Price Index (UCPI)

The Urban Consumer Price Index of August 2021 is increased by 0.48% over July 2021 and increased by 8.32% over corresponding month of the last year i.e. August 2020.

Table 2: Consumer Price Index (Urban) by Group of Commodities and Services (Base 2015-16)

No	Group	Group Weight (%)	Indices			% Change August 2021 Over		Impact (In % points) August 2021 Over	
			Aug21	July 21	Aug 20	July 21	Aug 20	July 21	Aug 20
	General	100.00	147.12	146.41	135.82	0.48	8.32	0.48	8.32
1.	Food & Non-alcoholic Bev.	30.42	152.49	151.66	137.90	0.55	10.58	0.17	3.27
	<i>Non-perishable Food Items</i>	25.97	153.60	153.10	136.93	0.33	12.17	0.09	3.19
	<i>Perishable Food Items</i>	4.46	146.03	143.23	143.57	1.95	1.71	0.09	0.08
2.	Alcoholic Bev.& Tobacco	0.85	153.94	153.94	149.80	0.00	2.76	0.00	0.03
3.	Clothing & Footwear	8.01	146.97	146.78	133.20	0.13	10.34	0.01	0.81
4.	Housing, Water, Electricity, Gas & Fuels	27.03	143.73	143.00	134.06	0.51	7.21	0.13	1.92
5.	Furnishing & Household Equip. & Maintenance	4.09	142.88	142.29	130.64	0.41	9.37	0.02	0.37
6.	Health	2.31	155.91	155.00	142.89	0.59	9.11	0.01	0.22
7.	Transport	6.14	151.29	150.24	139.08	0.70	8.78	0.04	0.55
8.	Communication	2.35	112.30	112.29	108.22	0.01	3.77	0.00	0.07
9.	Recreation & Culture	1.73	125.93	125.24	119.36	0.55	5.50	0.01	0.08
10.	Education	4.88	148.72	147.13	145.07	1.08	2.52	0.05	0.13
11.	Restaurants & Hotels	7.41	143.47	143.31	133.37	0.11	7.57	0.01	0.55
12.	Miscellaneous	4.77	154.10	153.38	145.22	0.47	6.11	0.02	0.31

Main contributors to month-on-month and year-on-year percentage changes are given below and detail is given in **Annexure-A**.

1. MONTH-ON-MONTH Top few commodities which varied from previous month are given below: -

FOOD

Increased: Tomatoes (17.84%), vegetables (12.52%), Beans (5.09%), Milk (1.94%), Potatoes (1.84%), Vegetable ghee (1.75%), Sugar (1.36%) and cooking oil (1.11%).

Decreased: Chicken (11.98%), Fruits (7.75%), Pulse gram (5.18%), Condiments and Spices (2.75%), Pulse moong (2.35%) and Eggs (1.64%).

NON-FOOD

Increased: Liquefied Hydrocarbons (18.23%), Motor fuel (2.80%), Construction input items (0.98%) and Drugs and medicines (0.67%).

YEAR-ON-YEAR: Top few commodities which varied from corresponding month of previous year i.e. August, 2020 are given below: -

FOOD

Increased: Vegetable ghee (36.34%), Tomatoes (35.15%), Cooking oil (33.96%), Mustard oil (33.11%), Eggs (23.68%), Chicken (20.47%), Meat (13.71%) and Milk (10.64%).

Decreased: Potatoes (19.35%), Pulse moong (17.23%), Onions (1.36%) and Wheat (1.03%)

NON-FOOD

Increased: Liquefied Hydrocarbons (63.79%), Footwear (16.2%), Motor fuel (15.82%), Washing soap (12.56%), Woollen readymade garments (12.08%), Hosiery (11.38%) and Construction input items (10.45%).

III. Rural Consumer Price Index (RCPI)

The Rural Consumer Price Index of August 2021 is increased by 0.72% over July 2021 and increased by 8.40% over corresponding month of the last year i.e. August 2020.

Table 3: Consumer Price Index (Rural) by Group of Commodities and Services (Base 2015-16)

No	Group	Group Weight (%)	Indices			% Change August 2021 Over		Impact (In % points) August 2021 Over	
			Aug21	July 21	Aug 20	July 21	Aug 20	July 21	Aug 20
	General	100.00	148.34	147.28	136.84	0.72	8.40	0.72	8.40
1.	Food & Non-alcoholic Bev.	40.87	152.96	151.64	139.97	0.87	9.28	0.37	3.88
	<i>Non-perishable Food Items</i>	35.08	154.22	153.46	140.32	0.50	9.91	0.18	3.56
	<i>Perishable Food Items</i>	5.79	145.28	140.60	137.85	3.33	5.39	0.18	0.31
2.	Alcoholic Bev. & Tobacco	1.28	135.37	135.37	133.51	0.00	1.39	0.00	0.02
3.	Clothing & Footwear	9.48	153.41	153.20	141.86	0.14	8.14	0.01	0.80
4.	Housing, Water, Electricity, Gas & Fuels	18.49	141.47	140.05	128.98	1.01	9.68	0.18	1.69
5.	Furnishing & Household Equip. & Maintenance	4.10	145.48	144.60	132.25	0.61	10.00	0.02	0.40
6.	Health	3.51	154.46	153.66	143.24	0.52	7.83	0.02	0.29
7.	Transport	5.56	147.74	146.61	138.18	0.77	6.92	0.04	0.39
8.	Communication	1.99	105.80	105.77	104.76	0.03	0.99	0.00	0.02
9.	Recreation & Culture	1.38	135.26	133.72	125.26	1.15	7.98	0.01	0.10
10.	Education	2.13	139.52	138.99	133.48	0.38	4.53	0.01	0.09
11.	Restaurants & Hotels	6.19	145.85	144.82	136.41	0.71	6.92	0.04	0.43
12.	Miscellaneous	5.02	155.71	155.53	147.38	0.12	5.65	0.01	0.31

Main contributors to Month-on-Month and Year-on-Year percentage changes are given below and detail is given in **Annexure-B**.

1. MONTH-ON-MONTH Top few commodities which varied from previous month are given below: -

FOOD

Increased: Vegetables (17.35%), Tomatoes (7.40%), Onions (6.02%), cooking oil (4.99%), Vegetable ghee (4.94%), Sugar (2.68%), Mustard oil (2.63%), Potatoes (1.91%), Meat (1.57%) and Milk (1.05%).

Decreased: Chicken (14.90%), Fruits (11.14%), Pulse Moong (6.85%), Condiments and Spices (5.61%), Pulse Gram (2.45%), Gram Whole (1.81%) and Pulse Mash (1.30%).

NON-FOOD

Increased: Liquefied Hydrocarbons (12.94%), Motor Fuels (2.97%), Construction Input Items (2.37%), Furniture and Furnishing (1.45%) and Motor Vehicles (1.39%).

2. YEAR-ON-YEAR: Top few commodities which varied from corresponding month of previous year i.e. August 2020 are given below: -

FOOD

Increased: Cooking oil (40.04%), Vegetable ghee (36.91%), Mustard oil (36.18%), Vegetables (21.27%), Eggs (19.59%), Tomatoes (18.93%), Meat (16.13%), Chicken (10.52%) and Sugar (10.06%).

Decreased: Pulse Moong (19.92%), Potatoes (15.29%) and Condiments and Spices (5.52%)

NON-FOOD

Increased: Liquefied Hydrocarbons (48.36%), Motor Fuels (14.62%), Hosiery (14.38%), Clinic Fee (12.3%), Washing Soap (11.49%), Construction Input Items (11.46%), Woolen Cloth (11.02%) and Woolen Readymade Garments (10.01%).

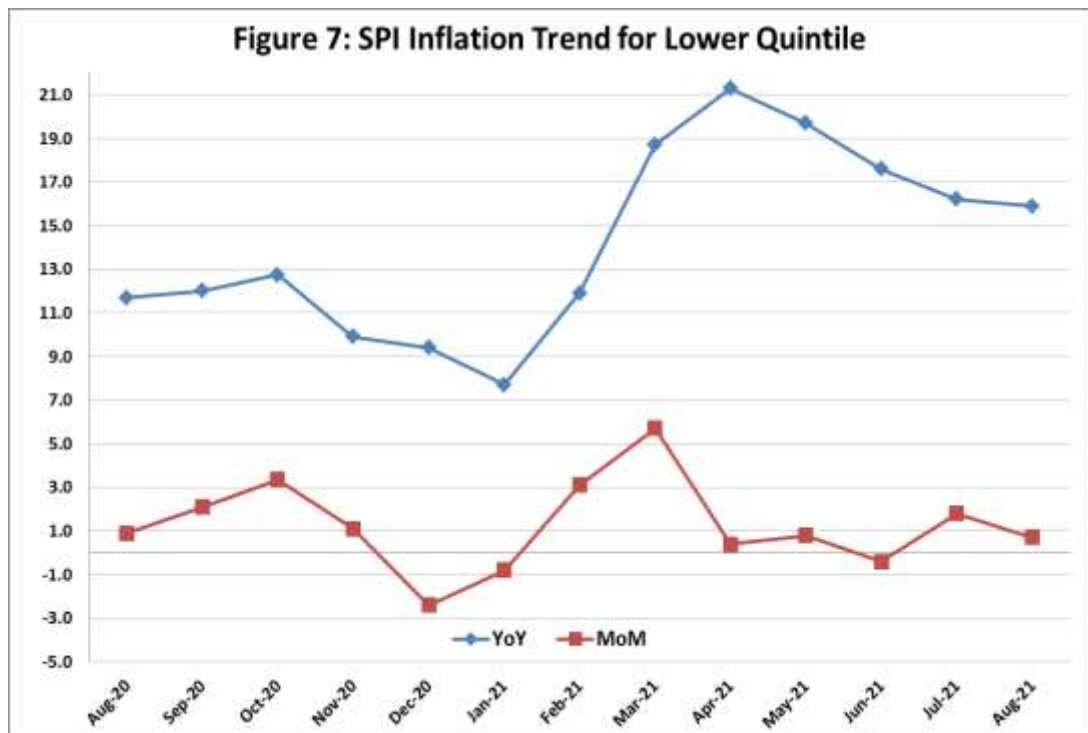
IV. Sensitive Price Indicator

Quintile-wise percentage changes YoY and MoM are given below in Table 4. The series from August 2020 to August 2021 is also graphed below in Figure 7.

Table 4: Sensitive Price Indicator (Base 2015-16)					
Quintiles	Indices			% Change August 2021 Over	
	August 2021	July, 2021	August 2020	July, 2021	August, 2020
1	163.39	162.25	140.95	0.70	15.92
2	152.44	151.37	135.55	0.71	12.46
3	153.77	152.63	137.28	0.75	12.01
4	150.08	148.91	133.98	0.79	12.02
5	151.79	150.30	135.27	0.99	12.21
Combined	151.62	150.33	134.57	0.86	12.67

Table 4.1 : Weekly Percentage Change of SPI During August - 2021				
Quintiles	% Change with Previous week			
	05-08-2021	12-08-2021	19-08-2021*	26-08-2021
Quintile 1	-0.1	0.65	NIL	0.2
Combined	0.12	0.61	NIL	0.22

*: SPI data for August 12, 2021 was repeated for August 19, 2021 due to Ashura holidays.



V. Wholesale Price Index

The Wholesale Price Index for August, 2021 increased by 1.17% over July, 2021. It increased by 17.15% over the corresponding month of the last year i.e. August, 2020. YoY and MoM movements, from August, 2020 to August, 2021 are also graphed below in Figure 8.

Table 5: Wholesale Price Index by Group of Commodities (Base 2015-16)

No	Group	Group Weight (%)	Indices			% Change August 2021 Over		Impact (In % points) August 2021 Over	
			Aug 21	July 21	Aug 20	July 21	Aug 20	July 21	Aug 20
	General	100.00	169.82	167.86	144.96	1.17	17.15	1.17	17.15
1	Agriculture Forestry & Fishery	25.77	172.52	169.70	141.83	1.66	21.64	0.43	5.45
2	Ores/Minerals, Elec., Gas & Water	12.01	169.35	168.51	165.44	0.50	2.36	0.06	0.32
3	Food, Beverages, Tobacco, Textiles & Leather Products	31.11	163.47	162.60	141.10	0.54	15.85	0.16	4.80
	i. Food Products, Beverages & Tobacco	20.07	159.78	158.66	139.45	0.71	14.58	0.13	2.81
	ii. Textiles & Apparels	10.33	173.51	173.22	145.83	0.17	18.98	0.02	1.97
	iii. Leather Products	0.71	122.09	119.35	118.88	2.30	2.70	0.01	0.02
4	Other Transportable Goods	22.40	176.15	173.26	143.01	1.67	23.17	0.39	5.12
5	Metal Product, Machinery & Equipment	8.72	168.82	166.42	144.73	1.44	16.64	0.12	1.45

Main contributors to month-on-month and year-on-year percentage changes are given below and detail is given in **Annexure-C**.

1. **MONTH-ON-MONTH** Top few commodities which varied from previous month are given below: -

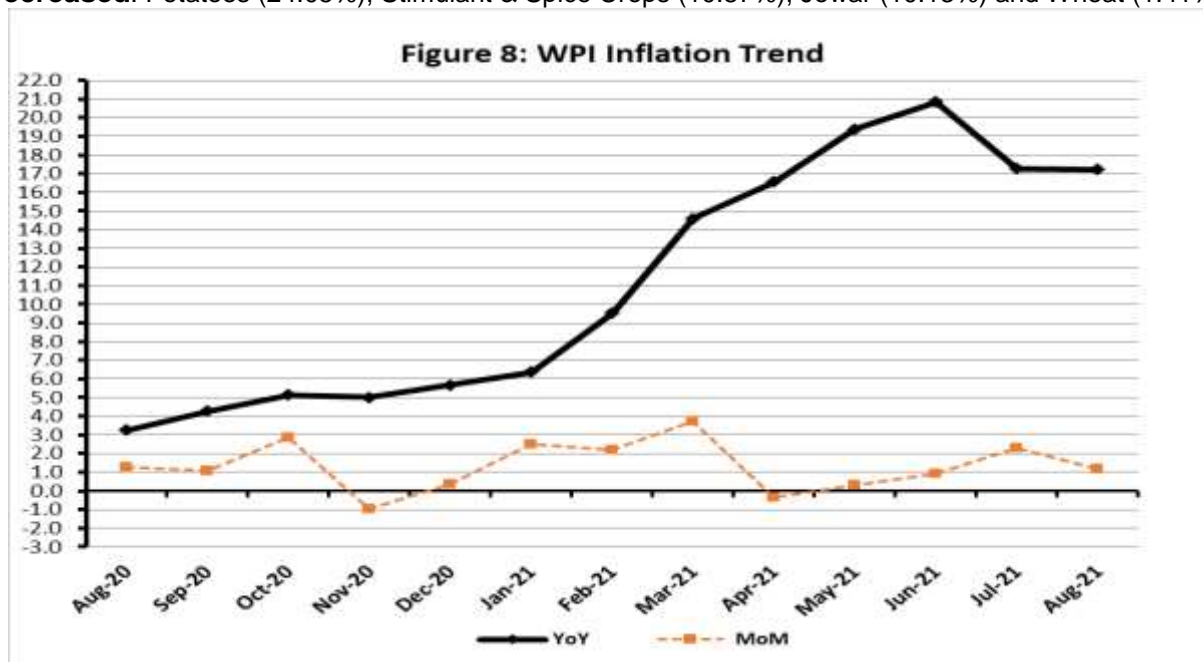
Increased: Vegetables (22.83%), Steel Bar Sheets (6.30%), Fibre Crops (5.85%), Vegetable Ghee (3.30%), Maize (3.27%), Motor Spirit (3.16%), Fertilizers (2.65%), Pesticides (2.53%), Cement (2.20%) and Furnace Oil (2.13%).

Decreased: Stimulant & Spice Crops (21.74%), Jowar (13.25%), Poultry (12.59%), Fruits (10.36%), Potatoes (5.59%) and Eggs (1.24%).

2. **YEAR-ON-YEAR** Top few commodities which varied from **corresponding month of** previous year i.e. August, 2020 are given below: -

Increased: Bajra (88.71%), Fibre Crops (76.63%), Oil Seeds (53.83%), Furnace Oil (50.67%), Vegetable Ghee (45.00%), Steel Bar Sheets (42.98%), Spices (37.65%), Kerosene Oil (34.64%), Cotton Yarn (23.46%), Diesel (23.41%), Fertilizers (23.23%), Eggs (22.93%), Vegetables (22.15%) and Poultry (20.27%).

Decreased: Potatoes (24.05%), Stimulant & Spice Crops (10.87%), Jowar (10.13%) and Wheat (1.41%).



Annexure A:CPI (Urban) Index Numbers by Commodity Groups & Commodities (2015-16=100)

Item and Specification	Weight	Index Numbers			% Change in Aug 2021 over	
		Aug 21	Jul 21	Aug 20	Jul 2021	Aug 2020
General	100.0000	147.12	146.41	135.82	+ 0.48	+ 8.32
Food and non-alcoholic Bevera	30.4215	152.49	151.66	137.90	+ 0.55	+ 10.58
01 Wheat	0.6120	154.33	153.98	155.93	+ 0.23	- 1.03
02 Wheat flour	3.0075	147.97	147.46	135.30	+ 0.35	+ 9.36
03 Wheat products	0.0936	161.02	160.75	138.26	+ 0.17	+ 16.46
04 Besan	0.0830	124.23	125.39	116.52	- 0.93	+ 6.62
05 Rice	1.1804	146.82	146.70	136.28	+ 0.08	+ 7.73
06 Bakery and confectionary	0.4770	148.70	148.47	135.60	+ 0.15	+ 9.66
07 Nimco	0.1224	147.14	144.86	131.66	+ 1.57	+ 11.76
08 Meat	2.0411	174.71	174.06	153.64	+ 0.37	+ 13.71
09 Chicken	1.3631	108.34	123.08	89.93	- 11.98	+ 20.47
10 Fish	0.3855	112.91	112.86	111.48	+ 0.04	+ 1.28
11 Milk fresh	7.1070	145.37	142.60	131.39	+ 1.94	+ 10.64
12 Milk products	0.6407	149.28	146.68	134.08	+ 1.77	+ 11.34
13 Milk powder	0.3106	140.36	138.86	131.01	+ 1.08	+ 7.14
14 Eggs	0.5083	179.46	182.46	145.10	- 1.64	+ 23.68
15 Butter	0.0932	195.19	195.19	171.57	+ 0.00	+ 13.77
16 Mustard oil	0.0120	169.86	168.88	127.61	+ 0.58	+ 33.11
17 Cooking oil	1.1016	190.26	188.17	142.03	+ 1.11	+ 33.96
18 Vegetable ghee	1.0324	200.86	197.41	147.32	+ 1.75	+ 36.34
19 Dry fruits	0.3299	136.90	137.03	130.72	- 0.09	+ 4.73
20 Fresh fruits	1.4363	120.29	130.40	116.43	- 7.75	+ 3.32
21 Pulse masoor	0.1624	106.66	106.31	102.40	+ 0.33	+ 4.16
22 Pulse moong	0.1697	118.66	121.52	143.36	- 2.35	- 17.23
23 Pulse mash	0.1152	105.23	105.31	99.52	- 0.08	+ 5.74
24 Pulse gram	0.1660	121.39	128.02	114.17	- 5.18	+ 6.32
25 Gram whohe	0.0912	129.20	129.39	122.84	- 0.15	+ 5.18
26 Beans	0.0408	168.55	160.39	156.01	+ 5.09	+ 8.04
27 Potatoes	0.4496	206.06	202.33	255.49	+ 1.84	- 19.35
28 Onions	0.5928	106.28	107.06	107.74	- 0.73	- 1.36
29 Tomatoes	0.3459	182.42	154.80	134.98	+ 17.84	+ 35.15
30 Fresh vegetables	1.5306	150.76	133.99	139.51	+ 12.52	+ 8.06
31 Sugar	1.1130	168.77	166.50	153.66	+ 1.36	+ 9.83
32 Gur	0.0379	153.52	151.65	140.02	+ 1.23	+ 9.64
33 Honey	0.1017	131.84	131.84	128.22	+ 0.00	+ 2.82
34 Sweetmeat	0.3535	156.91	156.04	144.06	+ 0.56	+ 8.92
35 Ice cream	0.1044	146.41	146.34	136.32	+ 0.05	+ 7.40
36 Condiments and Spices	1.3340	215.92	222.03	194.04	- 2.75	+ 11.28
37 Dessert preparation	0.0419	133.21	133.21	125.85	+ 0.00	+ 5.85
38 Tea	0.8427	140.84	140.84	140.74	+ 0.00	+ 0.07
39 Beverages	0.8906	131.92	131.44	127.61	+ 0.37	+ 3.38
Alcoholic Beverages, Tobacco	0.8540	153.94	153.94	149.80	+ 0.00	+ 2.76
40 Cigarettes	0.7167	141.09	141.09	139.96	+ 0.00	+ 0.81
41 Pan prepared	0.1373	221.00	221.00	201.15	+ 0.00	+ 9.87
Clothing and footwear	8.0096	146.97	146.78	133.20	+ 0.13	+ 10.34
42 Cotton cloth	2.2227	150.56	150.39	137.16	+ 0.11	+ 9.77
43 Woolen cloth	0.8361	141.67	141.25	128.48	+ 0.30	+ 10.27
44 Readymade garments	1.3196	139.41	139.34	130.56	+ 0.05	+ 6.78
45 Woolen readymade garments	0.4307	142.21	142.21	126.88	+ 0.00	+ 12.08
46 Tailoring	1.0741	153.06	152.45	141.42	+ 0.40	+ 8.23
47 Hosiry	0.4070	144.77	144.55	129.98	+ 0.15	+ 11.38
48 Dopatta	0.1713	129.93	129.93	125.09	+ 0.00	+ 3.87
49 Cleaning and laundring	0.0665	148.59	148.59	137.55	+ 0.00	+ 8.03
50 Footware	1.4816	150.78	150.78	129.76	+ 0.00	+ 16.20
Housing, water, Elec., Gas an	27.0332	143.73	143.00	134.06	+ 0.51	+ 7.21
51 House rent	19.2558	140.07	140.07	132.08	+ 0.00	+ 6.05
52 Construcion input items	0.3765	158.57	157.03	143.57	+ 0.98	+ 10.45
53 Construction wage rates	0.2025	157.88	157.85	151.71	+ 0.02	+ 4.07
54 Water supply	0.5269	162.68	158.84	152.62	+ 2.42	+ 6.59
55 Garbage collection	0.1064	175.57	174.58	169.20	+ 0.57	+ 3.76
56 Electricity charges	4.5562	131.62	131.51	120.58	+ 0.08	+ 9.16
57 Gas charges	1.0807	216.94	216.94	216.94	+ 0.00	+ 0.00
58 Liquified Hydrocarbons	0.5064	211.66	179.02	129.23	+ 18.23	+ 63.79
59 Solid Fuel	0.4218	120.79	120.73	114.60	+ 0.05	+ 5.40

Annexure A:CPI (Urban) Index Numbers by Commodity Groups & Commodities (2015-16=100)

Item and Specification	Weight	Index Numbers			% Change in Aug 2021 over			
		Aug 21	Jul 21	Aug 20	Jul 2021	Aug 2020		
<i>Furnishing and household equi</i>	4.0937	142.88	142.29	130.64	+	0.41	+	9.37
60 Furniture and furnishing	0.4750	144.24	143.57	131.85	+	0.47	+	9.40
61 Carpets	0.0308	113.69	113.24	112.09	+	0.40	+	1.43
62 Household textiles	0.3420	135.54	135.54	126.95	+	0.00	+	6.77
63 Household equipments	1.0032	146.49	145.78	131.38	+	0.49	+	11.50
64 Plastic products	0.0536	126.43	125.70	118.25	+	0.58	+	6.92
65 Major tools & equipments	0.0084	138.91	138.67	127.98	+	0.17	+	8.54
66 Washing soap/detergents/match	1.4112	146.73	145.93	130.36	+	0.55	+	12.56
67 Household servant	0.7695	135.87	135.61	132.71	+	0.19	+	2.38
<i>Health</i>	2.3098	155.91	155.00	142.89	+	0.59	+	9.11
68 Drugs and medicines	1.0735	155.75	154.71	142.25	+	0.67	+	9.49
69 Therapeutic Appliances and Eq	0.0054	116.67	116.66	113.06	+	0.01	+	3.19
70 Doctor (MBBS) clinic fee	0.4044	193.89	192.56	174.13	+	0.69	+	11.35
71 Dental services	0.0156	128.98	128.98	120.43	+	0.00	+	7.10
72 Medical tests	0.2367	134.84	134.74	128.31	+	0.07	+	5.09
73 Hospitals services	0.5742	139.23	138.50	128.99	+	0.53	+	7.94
<i>Transport</i>	6.1368	151.29	150.24	139.08	+	0.70	+	8.78
74 Motor vehicles	0.8097	152.56	151.83	148.34	+	0.48	+	2.84
75 Motor vehicle accessories	0.1941	144.34	142.81	131.46	+	1.07	+	9.80
76 Motor fuel	2.9088	169.01	164.41	145.93	+	2.80	+	15.82
77 Mechanical services	0.4290	139.00	138.01	131.58	+	0.72	+	5.64
78 Motor vehicle tax	0.0482	136.37	136.37	126.72	+	0.00	+	7.62
79 Transport services	1.7470	125.41	130.13	126.42	-	3.63	-	0.80
<i>Communication</i>	2.3536	112.30	112.29	108.22	+	0.01	+	3.77
80 Postal services	0.0190	163.41	163.41	147.05	+	0.00	+	11.13
81 Communication apparatus	0.4524	128.20	128.14	118.75	+	0.05	+	7.96
82 Communication Services	1.8822	107.97	107.97	105.30	+	0.00	+	2.54
<i>Recreation and culture</i>	1.7301	125.93	125.24	119.36	+	0.55	+	5.50
83 Recreation and culture	0.6478	115.15	114.76	111.23	+	0.34	+	3.52
84 Text books	0.6655	128.89	127.71	119.02	+	0.92	+	8.29
85 Newspapers	0.0716	151.55	151.55	151.55	+	0.00	+	0.00
86 stationery	0.3452	135.16	134.68	128.60	+	0.36	+	5.10
<i>Education</i>	4.8807	148.72	147.13	145.07	+	1.08	+	2.52
87 Education	4.8807	148.72	147.13	145.07	+	1.08	+	2.52
<i>Restaurants and hotels</i>	7.4050	143.47	143.31	133.37	+	0.11	+	7.57
88 Readymade food	5.5235	145.92	145.70	133.47	+	0.15	+	9.33
89 Marriage Hall Charges	1.7514	137.97	137.97	134.60	+	0.00	+	2.50
90 Accommodation Services	0.1301	113.30	113.30	112.72	+	0.00	+	0.51
<i>Misc. goods and services</i>	4.7720	154.10	153.38	145.22	+	0.47	+	6.11
91 Personal Grooming Services	0.8001	138.99	138.39	130.63	+	0.43	+	6.40
92 Electrical Appliances for Per	0.0465	119.66	118.50	118.32	+	0.98	+	1.13
93 Appliances/Articles/Products	2.9807	145.68	144.24	130.58	+	1.00	+	11.56
94 Personal Effects n.e.c.	0.9447	195.18	196.65	205.06	-	0.75	-	4.82

Annexure B:CPI (Rural) Index Numbers by Commodity Groups & Commodities (2015-16=100)

Item and Specification	Weight	Index Numbers			% Change in Aug 2021 over	
		Aug 21	Jul 21	Aug 20	Jul 2021	Aug 2020
General	100.0000	148.34	147.28	136.84	+ 0.72	+ 8.40
Food and non-alcoholic Bevera	40.8668	152.96	151.64	139.97	+ 0.87	+ 9.28
01 Wheat	3.4736	153.80	153.57	151.71	+ 0.15	+ 1.38
02 Wheat Flour	3.4297	150.96	150.27	138.42	+ 0.46	+ 9.06
03 Wheat Products	0.1068	149.72	150.20	136.90	- 0.32	+ 9.36
04 Besan	0.0728	126.75	127.96	119.29	- 0.95	+ 6.25
05 Rice	1.5501	188.45	187.79	177.04	+ 0.35	+ 6.44
06 Bakery and Confectionary	0.3702	148.12	147.38	130.76	+ 0.50	+ 13.28
07 Nimco	0.0774	135.47	132.95	118.45	+ 1.90	+ 14.37
08 Meat	1.7146	175.79	173.08	151.37	+ 1.57	+ 16.13
09 Chicken	1.4641	112.34	132.01	101.65	- 14.90	+ 10.52
10 Fish	0.2640	124.38	123.70	120.53	+ 0.55	+ 3.19
11 Milk fresh	10.3803	139.41	137.96	128.41	+ 1.05	+ 8.57
12 Milk products	0.9624	136.33	135.28	127.20	+ 0.78	+ 7.18
13 Milk powder	0.1062	130.24	129.71	124.83	+ 0.41	+ 4.33
14 Eggs	0.5665	171.70	173.20	143.57	- 0.87	+ 19.59
15 Butter	0.3333	148.79	147.72	133.29	+ 0.72	+ 11.63
16 Mustard oil	0.0136	177.27	172.73	130.17	+ 2.63	+ 36.18
17 Cooking oil	0.6011	211.65	201.60	151.14	+ 4.99	+ 40.04
18 Vegetable ghee	2.3764	217.40	207.16	158.79	+ 4.94	+ 36.91
19 Dry fruits	0.2496	154.97	155.00	141.45	- 0.02	+ 9.56
20 Fresh fruits	1.4505	119.57	134.56	115.95	- 11.14	+ 3.12
21 Pulse Masoor	0.2076	111.80	112.89	109.35	- 0.97	+ 2.24
22 Pulse Moong	0.2510	119.36	128.14	149.05	- 6.85	- 19.92
23 Pulse Mash	0.1465	105.21	106.60	99.68	- 1.30	+ 5.55
24 Pulse Gram	0.2751	120.09	123.11	112.86	- 2.45	+ 6.41
25 Gram Whole	0.1116	124.91	127.21	114.94	- 1.81	+ 8.67
26 Beans	0.0896	173.23	170.54	166.25	+ 1.58	+ 4.20
27 Potatoes	0.7437	235.12	230.71	277.55	+ 1.91	- 15.29
28 Onions	0.8965	99.98	94.30	91.55	+ 6.02	+ 9.21
29 Tomatoes	0.5069	158.27	147.37	133.08	+ 7.40	+ 18.93
30 Fresh Vegetables	2.0947	141.92	120.94	117.03	+ 17.35	+ 21.27
31 Sugar	2.0296	169.48	165.06	153.99	+ 2.68	+ 10.06
32 Gur	0.1522	154.87	152.07	143.26	+ 1.84	+ 8.10
33 Honey	0.0296	137.87	137.87	125.88	+ 0.00	+ 9.52
34 Sweetmeat	0.3967	141.66	141.14	131.40	+ 0.37	+ 7.81
35 Ice Cream	0.0568	142.84	142.03	132.99	+ 0.57	+ 7.41
36 Condiments and Spices	1.4919	175.33	185.75	185.58	- 5.61	- 5.52
37 Dessert Preparation	0.0133	132.10	132.10	122.30	+ 0.00	+ 8.01
38 Tea	1.2566	138.10	138.10	137.87	+ 0.00	+ 0.17
39 Beverages	0.5537	133.95	133.06	128.25	+ 0.67	+ 4.44
Alcoholic Beverages, Tobacco	1.2786	135.37	135.37	133.51	+ 0.00	+ 1.39
40 Cigarettes	1.2364	133.97	133.97	132.38	+ 0.00	+ 1.20
41 Pan Prepared	0.0422	176.12	176.12	166.69	+ 0.00	+ 5.66
Clothing and footwear	9.4826	153.41	153.20	141.86	+ 0.14	+ 8.14
42 Cotton Cloth	2.8381	169.22	169.22	157.33	+ 0.00	+ 7.56
43 Woolen Cloth	1.0959	144.22	144.22	129.91	+ 0.00	+ 11.02
44 Readymade Garments	1.1345	144.83	144.78	134.72	+ 0.03	+ 7.50
45 Woolen Readymade Garments	0.5401	143.31	143.31	130.27	+ 0.00	+ 10.01
46 Tailoring	1.2999	152.35	151.62	139.24	+ 0.48	+ 9.42
47 Hosiry	0.4322	186.00	184.57	162.61	+ 0.77	+ 14.38
48 Dopatta	0.2078	145.04	143.75	134.29	+ 0.90	+ 8.01
49 Cleaning and Laundering	0.0176	144.17	144.17	138.61	+ 0.00	+ 4.01
50 Footware	1.9165	137.55	137.49	131.22	+ 0.04	+ 4.82
Housing, water, Elec., Gas an	18.4853	141.47	140.05	128.98	+ 1.01	+ 9.68
51 House Rent	8.6110	140.21	140.21	132.21	+ 0.00	+ 6.05
52 Construction Input Items	0.6306	135.85	132.70	121.88	+ 2.37	+ 11.46
53 Construction Wage Rates	0.2526	160.29	160.04	151.57	+ 0.16	+ 5.75
54 Water Supply	0.0645	218.49	216.56	211.83	+ 0.89	+ 3.14
55 Garbage Collection	0.0080	154.75	154.75	142.31	+ 0.00	+ 8.74
56 Electricity Charges	3.4431	131.62	131.51	120.58	+ 0.08	+ 9.16
57 Liquified Hydrocarbons	0.9994	175.55	155.44	118.33	+ 12.94	+ 48.36
58 Solid Fuel	4.4761	142.47	141.64	130.10	+ 0.59	+ 9.51

Annexure B:CPI (Rural) Index Numbers by Commodity Groups & Commodities (2015-16=100)

Item and Specification	Weight	Index Numbers			% Change in Aug 2021 over			
		Aug 21	Jul 21	Aug 20	Jul 2021	Aug 2020		
<i>Furnishing and household equi</i>	4.1031	145.48	144.60	132.25	+	0.61	+	10.00
59 Furniture and Furnishing	0.5786	148.65	146.53	136.81	+	1.45	+	8.65
60 Household Textiles	0.4382	134.08	134.08	128.37	+	0.00	+	4.45
61 Household Equipments	1.2774	153.35	152.70	138.68	+	0.43	+	10.58
62 Plastic Products	0.0776	160.52	159.83	145.94	+	0.43	+	9.99
63 Major Tools and Equipments	0.0324	131.12	129.61	119.69	+	1.17	+	9.55
64 Washing Soaps, Detergents and	1.6989	141.01	140.15	126.48	+	0.61	+	11.49
<i>Health</i>	3.5141	154.46	153.66	143.24	+	0.52	+	7.83
65 Drugs and Medicines	1.5792	155.32	154.89	144.12	+	0.28	+	7.77
66 Doctor Clinic Fee	0.5128	190.32	190.32	169.48	+	0.00	+	12.30
67 Dental Services	0.0181	132.61	132.61	122.97	+	0.00	+	7.84
68 Medical Tests	0.3967	155.15	154.62	145.50	+	0.34	+	6.63
69 Hospitals Services	1.0073	134.96	133.08	127.98	+	1.41	+	5.45
<i>Transport</i>	5.5580	147.74	146.61	138.18	+	0.77	+	6.92
70 Motor Vehicles	0.7305	136.23	134.36	129.14	+	1.39	+	5.49
71 Motor Vehicles Accessories	0.1572	145.10	144.50	136.08	+	0.42	+	6.63
72 Motor Fuels	2.4932	166.10	161.31	144.91	+	2.97	+	14.62
73 Mechanical Services	0.3645	156.82	156.82	153.45	+	0.00	+	2.20
74 Motor Vehicle Tax	0.0174	120.86	132.92	127.98	-	9.07	-	5.56
75 Transport Services	1.7952	125.59	129.42	129.70	-	2.96	-	3.17
<i>Communication</i>	1.9940	105.80	105.77	104.76	+	0.03	+	0.99
76 Postal Services	0.0070	149.43	149.43	149.43	+	0.00	+	0.00
77 Communication Apparatus	0.3362	121.44	121.31	119.22	+	0.11	+	1.86
78 Communication Services	1.6508	102.42	102.42	101.63	+	0.00	+	0.78
<i>Recreation and culture</i>	1.3764	135.26	133.72	125.26	+	1.15	+	7.98
79 Recreation and Culture	0.4763	136.61	136.03	129.32	+	0.43	+	5.64
80 Text Books	0.5047	123.53	121.01	113.87	+	2.08	+	8.48
81 Newspapers	0.0230	165.56	165.56	161.68	+	0.00	+	2.40
82 Stationery	0.3724	147.57	146.02	133.27	+	1.06	+	10.73
<i>Education</i>	2.1342	139.52	138.99	133.48	+	0.38	+	4.53
83 Education	2.1342	139.52	138.99	133.48	+	0.38	+	4.53
<i>Restaurants and hotels</i>	6.1895	145.85	144.82	136.41	+	0.71	+	6.92
84 Readymade Food	3.8001	157.66	156.50	143.29	+	0.74	+	10.03
85 Marriage Hall Charges	2.2525	128.62	127.75	126.93	+	0.68	+	1.33
86 Accommodation Services	0.1369	101.62	101.62	101.59	+	0.00	+	0.03
<i>Misc. goods and services</i>	5.0174	155.71	155.53	147.38	+	0.12	+	5.65
87 Personal Grooming Services	1.5363	162.67	160.44	142.09	+	1.39	+	14.48
88 Appliances/Articles/Products	2.2746	134.84	133.83	123.79	+	0.75	+	8.93
89 Personal Effects n.e.c.	1.2065	186.19	190.18	198.58	-	2.10	-	6.24

Annexure C: Wholesale Price Indices by Major Groups & Commodities

(2015-16=100)

Item and Specification	Weight	Index Numbers			% Change in Aug 2021 over			
		Aug 21	Jul 21	Aug 20	Jul 2021	Aug 2020		
General	100.0000	169.82	167.86	144.96	+	1.17	+	17.15
Agriculture Forestry & Fisher	25.7674	172.52	169.70	141.83	+	1.66	+	21.64
001 Wheat	0.6297	153.47	152.43	155.66	+	0.68	-	1.41
002 Maize	0.6764	161.64	156.52	139.84	+	3.27	+	15.59
003 Rice	2.4413	176.25	176.29	161.84	-	0.02	+	8.90
004 Sorghum / Jowar	0.0214	185.54	213.89	206.45	-	13.25	-	10.13
005 Millet / Bajra	0.0374	240.38	235.14	127.38	+	2.23	+	88.71
006 Vegetables	1.2441	188.86	153.76	154.61	+	22.83	+	22.15
007 Fresh Fruits	1.5144	145.70	162.54	143.98	-	10.36	+	1.19
008 Dry Fruits	0.2478	138.84	138.25	130.95	+	0.43	+	6.03
009 Cotton Seeds	1.1511	141.14	141.78	132.15	-	0.45	+	6.80
010 Other Oil Seeds	0.0722	211.46	210.84	137.46	+	0.29	+	53.83
011 Edible Roots / Potatoes	0.2540	238.18	252.28	313.59	-	5.59	-	24.05
012 Stimulant & Spice Crops	0.1634	294.59	376.43	330.53	-	21.74	-	10.87
013 Pulses	0.4901	128.05	125.89	120.31	+	1.72	+	6.43
014 Sugar Crops	1.0725	139.03	139.03	129.46	+	0.00	+	7.39
015 Fibre Crops	5.3169	256.92	242.73	145.46	+	5.85	+	76.63
016 Unmanufactured Tobacco	0.0742	239.24	239.17	197.99	+	0.03	+	20.83
017 Poultry	0.5633	103.23	118.10	85.83	-	12.59	+	20.27
018 Raw Milk from Bovine Animals	7.0279	139.65	139.47	131.14	+	0.13	+	6.49
019 Eggs	0.5034	176.35	178.57	143.45	-	1.24	+	22.93
020 Raw Animal Materials / Wool	0.0351	106.95	107.08	105.29	-	0.12	+	1.58
021 Hides, Skins & Fur Skins, Raw	0.4834	33.88	34.06	38.15	-	0.53	-	11.19
022 Fuel Wood in Logs	0.0179	127.84	127.94	116.21	-	0.08	+	10.01
023 Fish Live Fresh or Chilled	1.7295	158.03	158.03	154.34	+	0.00	+	2.39
Ores/Minerals, Elec., Gas & W	12.0069	169.35	168.51	165.44	+	0.50	+	2.36
024 Coal not Agglomerated	0.7508	75.79	75.79	75.79	+	0.00	+	0.00
025 Natural Gas Liquified	5.7065	207.37	205.35	195.59	+	0.98	+	6.02
026 Salt & Pure Sodium Chloride	0.0584	169.23	169.23	162.33	+	0.00	+	4.25
027 Electrical Energy	5.4912	142.64	142.89	146.40	-	0.17	-	2.57
Food, Beverages, Tobacco, Textil	31.1122	163.47	162.60	141.10	+	0.54	+	15.85
Food Products, Beverages &	20.0718	159.78	158.66	139.45	+	0.71	+	14.58
028 Meat of Animals	3.4559	180.57	180.46	153.94	+	0.06	+	17.30
029 Vegetables & Fruit Juice	0.0058	123.20	122.54	111.15	+	0.54	+	10.84
030 Dried Fruits & Nuts	0.1733	177.03	177.03	159.65	+	0.00	+	10.89
031 Fruit Juices	0.3880	131.77	131.77	125.76	+	0.00	+	4.78
032 Vegetable Oils Refined	1.9242	170.89	167.86	123.23	+	1.81	+	38.68
033 Vegetable Ghee	1.5632	208.96	202.29	144.11	+	3.30	+	45.00
034 Oil Cakes	0.9611	159.32	159.65	139.48	-	0.21	+	14.22
035 Processed Liquid Milk	4.4437	143.51	143.51	134.84	+	0.00	+	6.43
036 Milk & Cream in Solid Form	0.0316	135.88	135.88	128.95	+	0.00	+	5.37
037 Ice Cream	0.0047	147.94	147.94	137.64	+	0.00	+	7.48
038 Dairy Products N.E.C	0.0117	139.38	138.56	134.83	+	0.59	+	3.37
039 Wheat Flour	2.3034	152.32	152.49	147.02	-	0.11	+	3.60
040 Other Cereal Flour	0.0604	124.24	125.36	116.92	-	0.89	+	6.26
041 Sugar Refined	1.7975	169.42	166.49	153.43	+	1.76	+	10.42
042 Chocolate	0.0139	89.03	89.03	81.72	+	0.00	+	8.95
043 Sugar Confectionary	0.0738	187.66	187.66	171.45	+	0.00	+	9.45
044 Coffee & Tea	0.7303	130.00	129.91	129.05	+	0.07	+	0.74
045 Spices	0.1449	342.23	342.05	248.63	+	0.05	+	37.65
046 Other Food Products	0.0336	119.35	119.35	117.25	+	0.00	+	1.79
047 Mineral Water	0.0207	125.24	125.24	124.87	+	0.00	+	0.30
048 Beverages	0.6303	131.61	129.86	127.72	+	1.35	+	3.05
049 Tobacco Products	1.2998	104.23	104.23	104.23	+	0.00	+	0.00
Textiles & Apparels	10.3289	173.51	173.22	145.83	+	0.17	+	18.98
050 Cotton Yarn	5.2491	203.51	203.51	164.84	+	0.00	+	23.46
051 Nylon Yarn	0.1719	95.24	95.24	95.24	+	0.00	+	0.00
052 Blended Yarn	0.1689	129.30	129.30	120.22	+	0.00	+	7.55
053 Woven Fabrics	0.0128	161.21	160.35	137.73	+	0.54	+	17.05
054 Cotton Fabrics	0.6343	170.13	169.71	150.20	+	0.25	+	13.27
055 Other Fabrics	1.1016	126.38	126.34	113.59	+	0.03	+	11.26
056 Silk & Reyon Fabrics	0.7350	168.50	168.08	129.92	+	0.25	+	29.70
057 Towels	0.1235	141.44	141.44	125.47	+	0.00	+	12.73
058 Blankets	0.0029	104.95	104.95	104.35	+	0.00	+	0.57
059 Bed Sheets	0.0913	127.88	127.88	119.63	+	0.00	+	6.90

Annexure C: Wholesale Price Indices by Major Groups & Commodities (2015-16=100)

Item and Specification	Weight	Index Numbers			% Change in Aug 2021 over	
		Aug 21	Jul 21	Aug 20	Jul 2021	Aug 2020
060 Quilts	0.0019	121.31	121.31	109.35	+ 0.00	+ 10.94
061 Woolen Carpets	0.0383	137.01	137.01	137.01	+ 0.00	+ 0.00
062 Synthetic Carpets	0.0566	117.09	116.51	115.72	+ 0.50	+ 1.18
063 Hosiery Products	0.8832	139.18	137.31	123.03	+ 1.36	+ 13.13
064 Readymade Garments	1.0576	140.16	139.51	131.74	+ 0.47	+ 6.39
Leather Products	0.7115	122.09	119.35	118.88	+ 2.30	+ 2.70
065 Leather Without Hair	0.2973	112.56	108.77	108.00	+ 3.48	+ 4.22
066 Other Leather N.E.C	0.2567	114.96	111.77	111.77	+ 2.85	+ 2.85
067 Footwears	0.1575	151.69	151.69	151.00	+ 0.00	+ 0.46
Other Transportable Goods	22.3979	176.15	173.26	143.01	+ 1.67	+ 23.17
068 Timber	0.0165	157.07	155.92	151.80	+ 0.74	+ 3.47
069 Printing Paper	0.4279	130.70	130.70	130.70	+ 0.00	+ 0.00
070 Hard Board	0.1579	146.50	146.50	146.50	+ 0.00	+ 0.00
071 Motor Spirit	1.6268	168.95	163.77	146.32	+ 3.16	+ 15.47
072 Diesel Oil	5.4849	165.52	163.41	134.12	+ 1.29	+ 23.41
073 Kerosine Oil	0.2151	172.39	169.54	128.04	+ 1.68	+ 34.64
074 Furnace Oil	3.2664	338.70	331.64	224.79	+ 2.13	+ 50.67
075 Mobil Oil	0.7114	131.01	131.01	119.60	+ 0.00	+ 9.54
076 Chemicals	1.7720	150.36	148.37	132.94	+ 1.34	+ 13.10
077 Dyeing Material	0.1539	146.16	146.16	146.16	+ 0.00	+ 0.00
078 Fertilizers	2.8657	115.96	112.97	94.10	+ 2.65	+ 23.23
079 Pesticides	0.2763	146.51	142.90	141.18	+ 2.53	+ 3.78
080 Insecticides	0.1276	111.49	111.49	111.49	+ 0.00	+ 0.00
081 Paints & Varnishes	0.1916	141.16	141.16	135.82	+ 0.00	+ 3.93
082 Medicines	1.1428	151.97	150.06	144.83	+ 1.27	+ 4.93
083 Soaps & Detergents	0.8168	117.70	117.55	109.71	+ 0.13	+ 7.28
084 Auto Tyres	0.2703	127.04	126.22	124.74	+ 0.65	+ 1.84
085 Plastic Products	0.4550	119.91	119.91	117.75	+ 0.00	+ 1.83
086 Glass sheets	0.2089	148.06	148.06	138.47	+ 0.00	+ 6.93
087 Other Glass Articles	0.1635	150.08	150.08	149.89	+ 0.00	+ 0.13
088 Ceramics & Sanitary Fixture	0.0244	127.62	127.62	124.15	+ 0.00	+ 2.80
089 Bricks, Blocks & Tiles	0.1566	136.28	135.17	128.35	+ 0.82	+ 6.18
090 Cement	1.8145	134.16	131.27	118.98	+ 2.20	+ 12.76
091 Bed Foam	0.0006	158.20	157.23	146.96	+ 0.62	+ 7.65
092 Matches	0.0505	1173.3	1173.3	1171.7	+ 0.00	+ 0.13
Metal Product, Machinery & Eq	8.7156	168.82	166.42	144.73	+ 1.44	+ 16.64
093 Steel Bar & Sheets	1.4615	230.68	217.01	161.34	+ 6.30	+ 42.98
094 Pipe Fittings	0.0780	176.06	174.45	144.78	+ 0.92	+ 21.61
095 Steel Products	0.3879	134.30	134.30	134.16	+ 0.00	+ 0.10
096 Engines & Motors	0.0046	107.29	107.29	107.29	+ 0.00	+ 0.00
097 Vacuum Pumps	0.0155	107.56	107.56	107.56	+ 0.00	+ 0.00
098 Air Conditioners	0.0049	128.74	128.74	115.95	+ 0.00	+ 11.03
099 Cultivators	0.0551	103.75	103.75	103.75	+ 0.00	+ 0.00
100 Chuff Cutter	0.1293	121.43	121.43	110.00	+ 0.00	+ 10.39
101 Tractors	0.0028	135.63	135.63	122.16	+ 0.00	+ 11.03
102 Lathe Machines	0.0525	232.65	232.65	203.64	+ 0.00	+ 14.25
103 Concrete Mixture	0.0107	100.00	100.00	100.00	+ 0.00	+ 0.00
104 Fridge, WashM, SewM, Fans, Iron	1.1645	163.03	163.01	153.70	+ 0.01	+ 6.07
105 Electric Wires	0.0912	148.23	144.65	137.76	+ 2.47	+ 7.60
106 Lighting Equipments	1.4431	131.51	131.51	116.71	+ 0.00	+ 12.68
107 Radio & Television	0.1843	108.07	108.07	104.51	+ 0.00	+ 3.41
108 Motor Vehicles	0.0244	156.48	156.48	156.45	+ 0.00	+ 0.02
109 Motorcycles	0.2570	139.78	137.77	124.50	+ 1.46	+ 12.27
110 Bicycles	3.3483	172.55	172.55	153.05	+ 0.00	+ 12.74