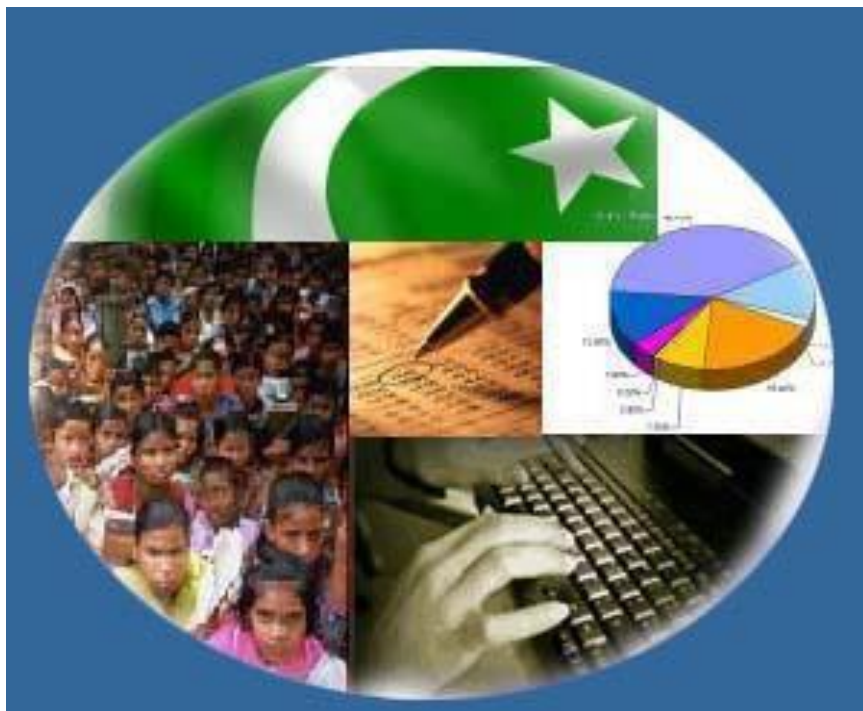




Monthly Review on Price Indices



August, 2019
(Base Year 2015-16)

Government of Pakistan
Ministry Of Planning, Development & Reform
Pakistan Bureau of Statistics
Islamabad

Inflation in Brief

1. CPI inflation General, increased by 10.5% on year-on-year basis in August 2019 as compared to an increase of 8.4% in the previous month and 6.2% in August 2018. On month-on-month basis, it increased by 1.6% in August 2019 as compared to an increase of 1.8% in the previous month and a decrease of 0.3% in August 2018.
2. CPI inflation Urban, increased by 10.6% on year-on-year basis in August 2019 as compared to an increase of 8.7% in the previous month and 6.2% in August 2018. On month-on-month basis, it increased by 1.5% in August 2019 as compared to an increase of 2.0% in the previous month and a decrease of 0.3% in August 2018.
3. CPI inflation Rural, increased by 10.3% on year-on-year basis in August 2019 as compared to an increase of 7.9% in the previous month and 6.2% in August 2018. On month-on-month basis, it increased by 1.9% in August 2018 as compared to an increase of 1.6% in the previous month and a decrease of 0.3% in August 2017.
4. SPI inflation on YoY increased by 12.1% in August 2019 as compared to an increase of 8.9% a month earlier and an increase of 2.9% in August 2018. On MoM basis, it increased by 2.7% in August 2019 as compared to an increase of 1.0% a month earlier and a decrease of 0.2% in August 2018.
5. WPI inflation on YoY basis increased by 14.1% in August 2019 as compared to an increase of 13.3% a month earlier and an increase of 16.7% in August 2018. WPI inflation on MoM basis increased by 1.2% in August 2018 as compared to an increase of 3.1% a month earlier and an increase of 0.5% in corresponding month of last year i.e. August 2018.
6. Figures 1.a and 1.b show graphically the data of Table 1. Table 1.1 shows "Period Average" and "YoY" percent changes in indices of three years.

Table 1.a General Inflation (%) (Base 2015-16)																		
Period	CPI														SPI**		WPI	
	General						Food				Non-Food							
	National		Urban		Rural		Urban		Rural		Urban		Rural		YoY	MoM	YoY	MoM
	YoY	MoM	YoY	MoM	YoY	MoM	YoY	MoM	YoY	MoM	YoY	MoM	YoY	MoM				
Jul-18	6.7	1.5	6.7	1.4	6.6	1.7	3.9	0.7	3.9	1.5	8.3	1.8	8.9	1.8	4.2	1.4	16.3	3.7
Aug-18	6.2	-0.3	6.2	-0.3	6.2	-0.3	3.0	-0.5	3.7	-0.2	8.0	-0.2	8.3	-0.4	2.9	-0.2	16.7	0.5
Sep-18	5.4	0.0	5.6	-0.1	5.1	0.0	1.5	-0.8	1.5	-0.3	8.0	0.3	8.1	0.3	0.4	-0.4	14.6	-1.5
Oct-18	6.5	2.1	7.0	2.2	5.7	2.0	3.0	2.6	2.5	3.0	9.4	2.0	8.4	1.1	1.7	2.3	18.6	4.4
Nov-18	5.7	-0.1	6.3	-0.1	4.7	-0.2	1.7	-0.2	0.9	-0.7	9.0	0.0	8.0	0.3	0.8	-0.7	18.6	1.0
Dec-18	5.4	-0.3	5.9	-0.3	4.6	-0.3	0.6	-1.8	0.5	-1.4	9.0	0.5	8.1	0.6	1.5	-0.3	16.5	-1.3
Jan-19	5.6	0.3	6.2	0.4	4.6	0.0	2.6	0.3	1.8	0.0	8.2	0.5	7.0	0.0	3.4	0.4	12.6	-0.8
Feb-19	6.8	0.9	7.2	0.9	6.0	0.9	5.9	2.3	5.2	1.7	8.0	0.1	6.7	0.2	7.2	2.4	13.9	1.6
Mar-19	8.6	2.0	8.9	1.9	8.2	2.2	8.8	2.5	9.3	3.3	9.0	1.5	7.3	1.3	10.5	2.1	16.6	2.2
Apr-19	8.3	0.7	8.4	0.8	8.1	0.6	8.3	1.3	9.3	0.6	8.4	0.6	7.2	0.6	10.0	0.5	17.1	1.8
May-19	8.4	0.6	8.5	0.7	8.3	0.5	9.0	1.3	9.7	0.6	8.3	0.3	7.1	0.4	9.9	0.6	16.5	1.5
Jun-19	8.0	0.5	8.1	0.3	7.9	0.7	7.5	-0.3	9.1	0.7	8.4	0.7	7.0	0.7	9.3	0.9	14.0	0.2
Jul-19	8.4	1.8	8.7	2.0	7.9	1.6	7.9	1.0	9.3	1.7	9.2	2.5	6.7	1.5	8.9	1.0	13.3	3.1
Aug-19	10.5	1.6	10.6	1.5	10.3	1.9	11.9	3.1	12.6	2.9	9.9	0.5	8.4	1.1	12.1	2.7	14.1	1.2

** SPI for quintile 1. Digits 0.0* are due to rounding off.

7. Core inflation measured by non-food non-energy Urban CPI (Core NFNE) increased by 8.5% on (YoY) basis in August 2019 as compared to an increase of 8.2% in the previous month and 6.7% in August 2018. On (MoM) basis, it increased by 0.4% in August 2018 as compared to increase of 1.8% in previous month, and an increase of 0.2% in corresponding month of last year i.e. August 2018.
8. Core inflation measured by non-food non-energy Rural CPI (Core NFNE) increased by 8.8% on (YoY) basis in August 2019 as compared to an increase of 7.8% in the previous month and 6.7% in August 2018. On (MoM) basis, it increased by 1.0% in August 2018 as compared to increase of 2.0% in previous month, and an increase of 0.1% in corresponding month of last year i.e. August 2018.
9. Core inflation, measured by 20% weighted trimmed mean Urban CPI (Core Trimmed) increased by 8.5% on (YoY) basis in August 2019 as compared to 7.8% in the previous month and by 5.8% in August 2018. On (MoM) basis, it increased by 0.6% in August 2018 as compared to an increase of 1.4% in the previous month and an increase of 0.2% in corresponding month of last year i.e. August 2018.
10. Core inflation, measured by 20% weighted trimmed mean Rural CPI (Core Trimmed) increased by 8.7% on (YoY) basis in August 2019 as compared to 7.4% in the previous month and by 6.3% in August 2018. On (MoM) basis, it increased by 1.2% in August 2018 as compared to an increase of 1.6% in the previous month and an increase of 0.2% in corresponding month of last year i.e. August 2018.

Table 1.b Core Inflation (%) (Base 2015-16)

Period	NFNE				Trimmed			
	Urban		Rural		Urban		Rural	
	YoY	MoM	YoY	MoM	YoY	MoM	YoY	MoM
Jul-18	6.7	0.9	6.8	0.9	6.3	0.9	6.4	1.2
Aug-18	6.7	0.2	6.7	0.1	5.8	0.2	6.3	0.2
Sep-18	7.0	0.4	6.7	0.3	5.8	0.2	6.0	0.2
Oct-18	7.5	1.2	6.7	1.0	7.1	1.1	6.7	0.9
Nov-18	7.7	0.4	7.1	0.7	6.7	0.3	6.3	0.5
Dec-18	7.8	0.4	7.4	0.5	6.8	0.3	6.6	0.4
Jan-19	7.1	0.7	6.6	0.2	6.7	0.6	6.1	0.4
Feb-19	7.1	0.2	6.4	0.2	6.7	0.2	6.2	0.3
Mar-19	7.2	0.8	6.5	0.6	7.3	0.8	6.5	0.6
Apr-19	7.0	1.1	6.8	1.2	7.4	1.1	7.3	0.8
May-19	7.2	0.5	6.8	0.4	7.3	0.5	7.2	0.5
Jun-19	7.3	0.2	6.7	0.3	7.3	0.4	7.2	0.7
Jul-19	8.2	1.8	7.8	2.0	7.8	1.4	7.4	1.6
Aug-19	8.5	0.4	8.8	1.0	8.5	0.6	8.7	1.2

Table 1.1 Period Average and YoY % Change

Index	Average July - August % changes			August over August % changes		
	2019-2020	2018-2019	2017-2018	2019-2020	2018-2019	2017-2018
CPI (National)	9.44	6.42	4.13	10.49	6.17	4.39
CPI(Urban)	9.67	6.44	4.71	10.64	6.16	5.06
CPI(Rural)	9.07	6.39	3.23	10.27	6.20	3.37
SPI	10.49	3.56	1.58	12.09	2.91	2.24
WPI	13.67	16.52	1.95	14.06	16.72	2.02

Figure 1: UCPI Inflation YoY, Special Indices

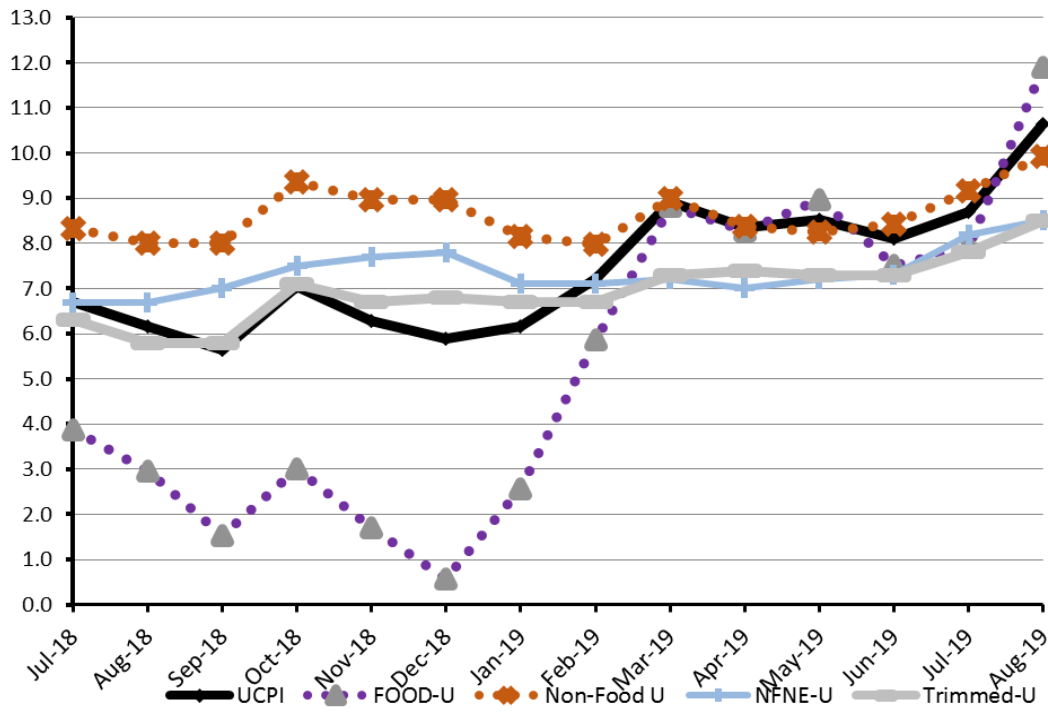


Figure 2: RCPI Inflation YoY, Special Indices

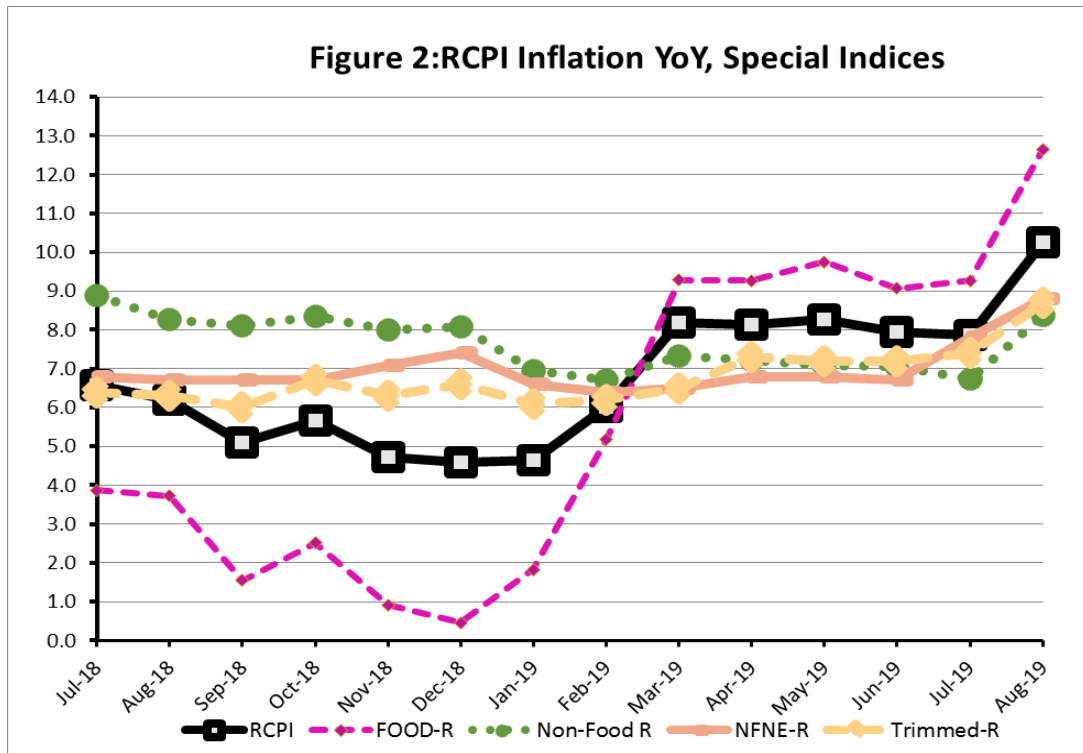


Figure 3: UCPI Inflation MoM, Special Indices

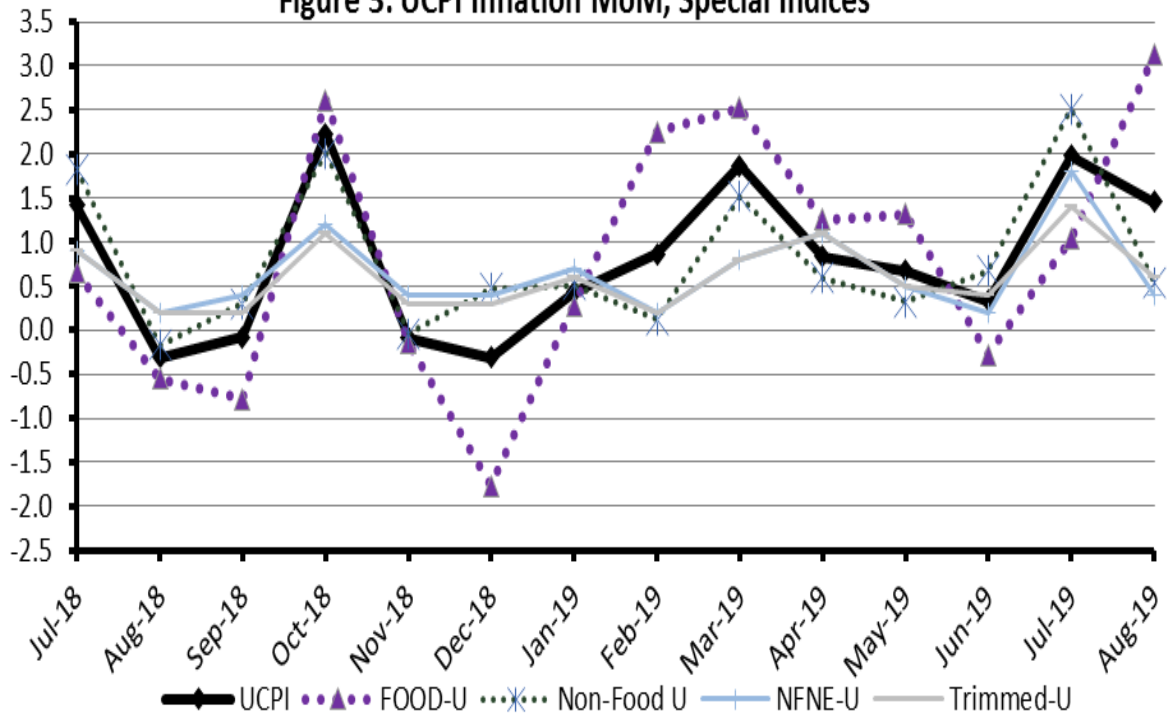


Figure 4: RCPI Inflation MoM, Special Indices

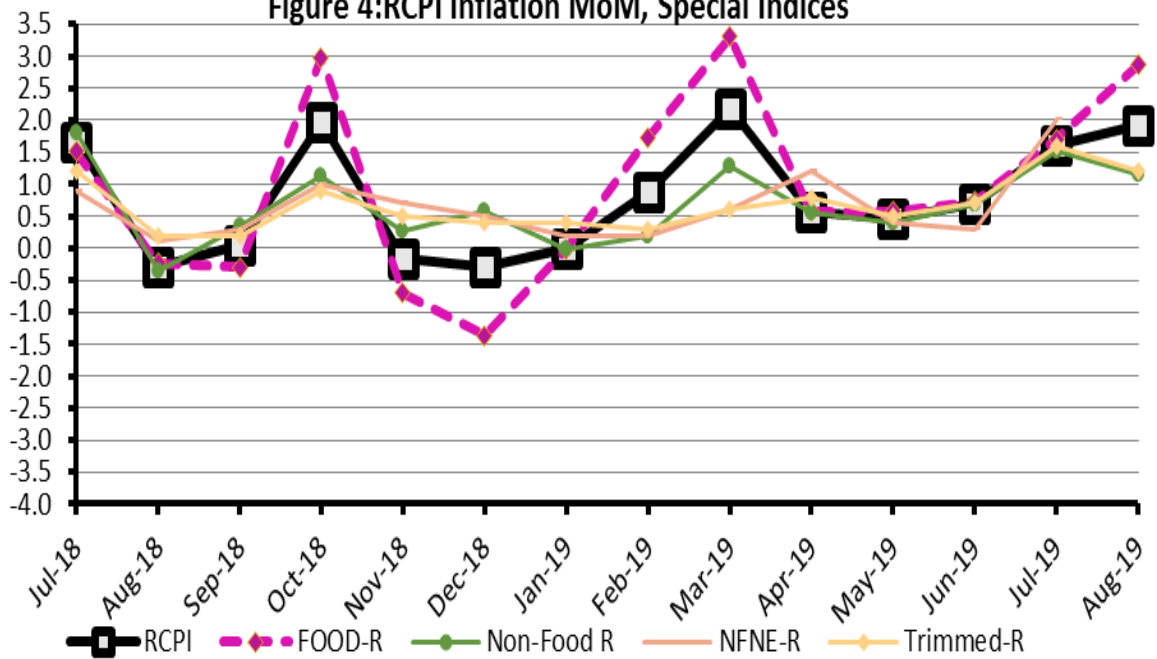


Figure 5: CPI Y.o.Y (National, Urban, Rural)

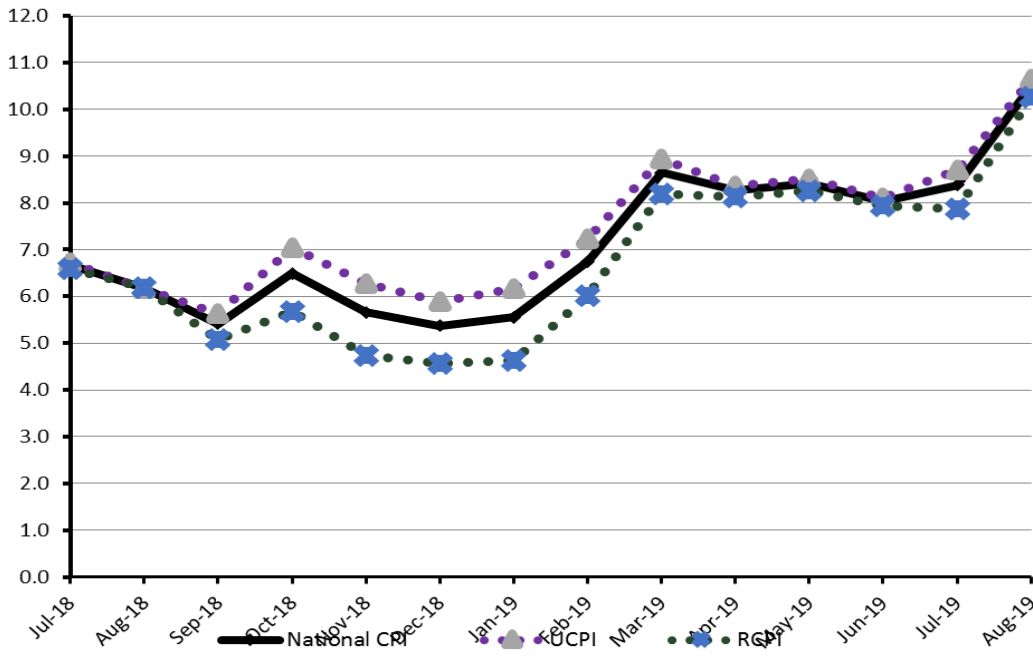
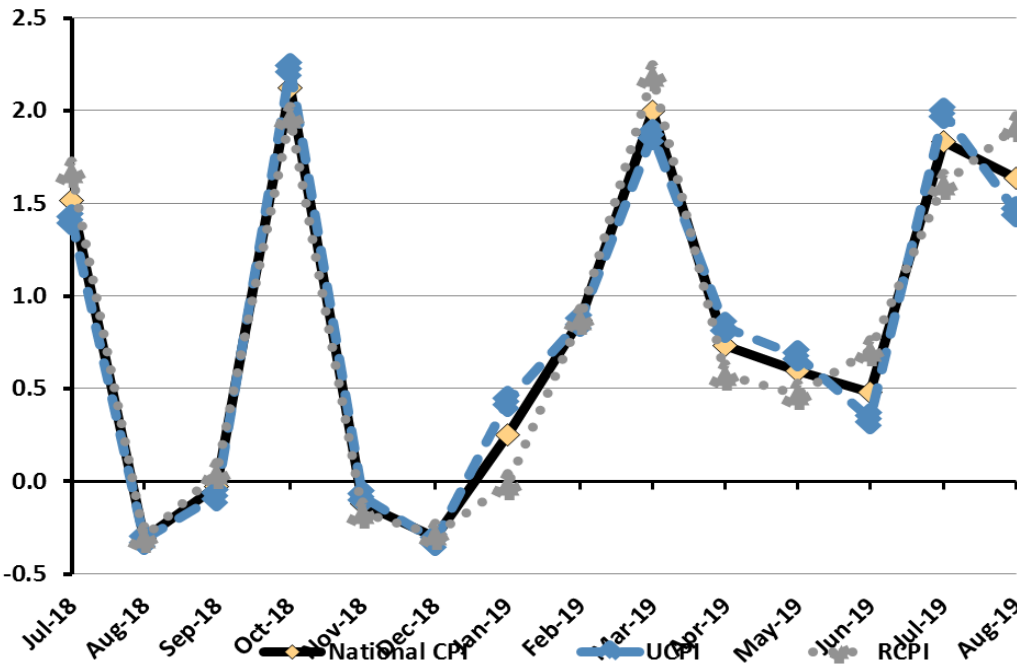


Figure 6: CPI M.o.M (National, Urban, Rural)



I. National Consumer Price Index (N-CPI)

The National Consumer Price Index of August 2019, is increased by 1.64% over July 2019 and increased by 10.49% over corresponding month of the last year i.e. August 2018.

Table 1 : Consumer Price Index (Urban) by Group of Commodities and Services (Base 2015-16)

No	Group	Group Weight (%)	Indices			% Change August 2019 Over		Impact (In % points) Jul 2019 Over	
			Aug 2019	Jul 2019	Aug 2018	Jul 2019	Aug 2018	Jul 2019	Aug 2018
	General	100.00	125.89	123.86	113.93	1.64	10.49	1.64	10.49
1.	Food & Non-alcoholic Bev.	34.58	123.02	118.95	109.24	3.42	12.62	1.14	4.18
	Non-perishable Food Items	29.60	120.85	117.55	107.75	2.81	12.16	0.79	3.40
	Perishable Food Items	4.99	135.89	127.23	118.06	6.80	15.10	0.35	0.78
2.	Alcoholic Bev.& Tobacco	1.02	133.91	133.58	103.20	0.25	29.76	0.00	0.28
3.	Clothing & Footwear	8.60	125.52	123.86	115.27	1.34	8.89	0.11	0.77
4.	Housing, Water, Electricity, Gas & Fuels	23.63	125.03	124.95	116.78	0.06	7.07	0.02	1.71
5.	Furnishing & Household Equipment Maintenance	4.10	122.14	121.01	109.49	0.94	11.55	0.04	0.45
6.	Health	2.79	132.85	131.80	118.69	0.80	11.93	0.02	0.35
7.	Transport	5.91	143.66	141.03	121.24	1.86	18.49	0.13	1.16
8.	Communication	2.21	106.67	106.59	102.28	0.08	4.29	0.00	0.09
9.	Recreation & Culture	1.59	117.30	116.56	108.96	0.64	7.66	0.01	0.12
10.	Education	3.79	141.12	140.88	131.96	0.17	6.94	0.01	0.30
11.	Restaurants & Hotels	6.92	124.54	123.31	117.32	0.99	6.15	0.07	0.44
12.	Miscellaneous	4.87	128.63	126.23	113.64	1.90	13.18	0.09	0.64

II. Urban Consumer Price Index (UCPI)

The Urban Consumer Price Index of August 2019, is increased by 1.46% over July 2019 and increased by 10.64% over corresponding month of the last year i.e. August 2018.

Table 2 : Consumer Price Index (Urban) by Group of Commodities and Services (Base 2015-16)

No	Group	Group Weight (%)	Indices			% Change August 2019 Over		Impact (In % points) Aug 2019 Over	
			Aug 2019	Jul 2019	Aug 2018	Jul 2019	Aug 2018	Jul 2018	Aug 2018
	General	100.00	126.77	124.95	114.58	1.46	10.64	1.46	10.64
1.	Food & Non-alcoholic Bev.	30.42	123.19	118.77	109.39	3.72	12.62	1.07	3.66
	Non-perishable Food Items	25.97	120.58	116.87	107.21	3.17	12.47	0.77	3.03
	Perishable Food Items	4.46	138.38	129.88	122.09	6.54	13.34	0.30	0.63
2.	Alcoholic Bev.& Tobacco	0.85	141.93	141.67	110.48	0.18	28.47	0.00	0.23
3.	Clothing & Footwear	8.01	123.36	121.60	113.11	1.45	9.06	0.11	0.72
4.	Housing, Water, Electricity, Gas & Fuels	27.03	127.15	127.20	117.08	-0.04	8.60	-0.01	2.38
5.	Furnishing & Household Equipment Maintenance	4.09	123.05	122.28	109.44	0.63	12.44	0.03	0.49
6.	Health	2.31	133.97	133.63	119.97	0.25	11.67	0.01	0.28
7.	Transport	6.14	144.36	141.72	121.29	1.86	19.02	0.13	1.24
8.	Communication	2.35	107.84	107.80	102.18	0.04	5.54	0.00	0.12
9.	Recreation & Culture	1.73	116.23	115.31	108.14	0.80	7.48	0.01	0.12
10.	Education	4.88	143.62	143.47	133.75	0.10	7.38	0.01	0.42
11.	Restaurants & Hotels	7.41	123.22	122.67	117.30	0.45	5.05	0.03	0.38
12.	Miscellaneous	4.77	128.97	127.23	114.58	1.37	12.56	0.07	0.60

Main contributors to month-on-month and year-on-year percentage changes are given below and detail is given in Annexure A.

1. Month-on-month Top few commodities which varied from previous month are given below:-

Food Items Increased: Chicken (40.75%), Tomatoes(37.47%), Onions(32.31%), Fresh vegetables(12.84%), Eggs (9.76%), Potatoes(6.21%), Cooking oil(4.68%), Vegetable ghee(4.18%), Sugar(3.78%), Condiments and Spices(3.26%), Pulse masoor(2.54%), Bakery and confectionary(2.31%), Beverages(2.04%), Mustard oil(1.75%), Sweetmeat (1.51%), Pulse gram(1.44%), Besan(1.3%), Wheat flour (1.29%), Ice cream (1.25%), and Pulse mash(1.01%).

Decreased: Fresh fruits(15.64%) and Wheat(0.3%).

Non-food Items Increased: Footware(4.77%), Personal Effects n.e.c.(4.43%), Motor fuel(3.88%), Water supply(2.51%), Motor vehicles(1.66%), Dopatta(1.64%), Cleaning and laundring(1.51%), Woolen cloth(1.28%), Recreation and culture(1.2%), Washing soap/detergents/match box(1.11%), and Cotton cloth(1.02%).

Decreased: Liquefied Hydrocarbons (5.19%) and Transport services (1.79%).

Year-on-Year: Top few commodities which varied from previous year i.e. August 2017 are given below:-

Food Items Increased: Chicken (75.27%), Onions(61.11%), Pulse moong (46.32%), Cigarettes (37.96%), Sugar(33.8%), Pulse mash(29.52%), Potatoes(27.34%), Butter(25.02%), Condiments and Spices(21.95%), Cooking oil(19.79%), Vegetable ghee(17.13%), Pulse masoor(13.53%), Fish(13.3%), Meat(12.05%), Pulse gram(11.42%), and Milk powder (10.91%).

Decreased: Tomatoes (28.81%)

Non-food Items Increased: Gas charges(114.64%), Newspapers(26.29%), Motor vehicle accessories(23.66%), Motor fuel(23.43%), Motor vehicles(20.72%), Construction input items(18.18%), Drugs and medicines(17.2%), Doctor (MBBS) clinic fee(14.98%), Cotton cloth(13.05%), Footwear (11.95%), Communication apparatus(11.39%), Transport services(10.83%), and Construction wage rates(10.31%).

III. Rural Consumer Price Index (RCPI)

The Rural Consumer Price Index of August 2019, is increased by 1.91% over July 2019 and increased by 10.27% over corresponding month of the last year i.e. August 2018.

Table 3 : Consumer Price Index (Rural) by Group of Commodities and Services (Base 2015-16)

No	Group	Group Weight (%)	Indices			% Change August 2019 Over		Impact (In % points) Aug 2019 Over	
			Aug 2019	Jul 2019	Aug 2018	Jul 2019	Aug 2018	Jul 2018	Aug 2018
	General	100.00	124.56	122.22	112.96	1.91	10.27	1.91	10.27
1.	Food & Non-alcoholic Bev.	40.87	122.83	119.15	109.07	3.09	12.62	1.23	4.98
	Non-perishable Food Items	35.08	121.16	118.32	108.36	2.40	11.81	0.82	3.97
	Perishable Food Items	5.79	132.99	124.16	113.37	7.11	17.31	0.42	1.00
2.	Alcoholic Bev. & Tobacco	1.28	125.83	125.43	95.86	0.32	31.26	0.00	0.34
3.	Clothing & Footwear	9.48	128.27	126.75	118.02	1.20	8.68	0.12	0.86
4.	Housing, Water, Electricity, Gas & Fuels	18.49	120.36	119.99	116.12	0.31	3.65	0.06	0.69
5.	Furnishing & Household Equipment Maintenance	4.10	120.77	119.09	109.57	1.41	10.22	0.06	0.41
6.	Health	3.51	131.74	129.98	117.42	1.35	12.20	0.05	0.45
7.	Transport	5.56	142.48	139.88	121.16	1.86	17.60	0.12	1.05
8.	Communication	1.99	104.60	104.43	102.47	0.16	2.08	0.00	0.04
9.	Recreation & Culture	1.38	119.33	118.92	110.51	0.34	7.98	0.00	0.11
10.	Education	2.13	132.50	131.93	125.80	0.43	5.33	0.01	0.13
11.	Restaurants & Hotels	6.19	126.91	124.47	117.35	1.96	8.15	0.12	0.52
12.	Miscellaneous	5.02	128.13	124.79	112.30	2.68	14.10	0.14	0.70

Main contributors to month-on-month and year-on-year percentage changes are given below and detail is given in Annexure A.

1. Month-on-month Top few commodities which varied from previous month are given below:-

Food Items Increased: Tomatoes(35.4%), Onions(28.49%), Chicken(26.56%), Potatoes(18.18%), Fresh Vegetables(10.96%), Eggs(9.79%), Beverages(5.67%), Sugar(5.21%), Condiments and Spices(3.49%), Cooking oil(3.22%), Pulse Moong(2.81%), Vegetable ghee(2.51%), Pulse Mash(2.35%), Milk powder(1.85%), Besan(1.6%), Pulse Gram(1.44%), Pulse Masoor(1.44%), Nimco(1.41%), Milk fresh(1.39%), Mustard oil(1.36%) and Readymade Food(1.29%).

Decreased: Fresh fruits(20.6%), Fish(2.8%), Beans(1.72%) and Wheat(0.32%).

Non-food Items Increased: Doctor Clinic Fee (4.74%), Motor Fuels (4.21%), Personal Grooming Services (3.33%), Marriage Hall Charges (3.21%), Furniture and Furnishing (2.11%), Cotton Cloth (1.78%), Major Tools and Equipment's (1.54%), and Woolen Cloth (1.51%).

2. Year-on-Year: Top few commodities which varied from previous year i.e. August 2016 are given below:-

Food Items Increased: Onions(62.51%), Chicken(56.48%), Pulse Moong(50.97%), Sugar(37.34%), Cigarettes(32.37%), Pulse Mash(31.39%), Potatoes(28.08%), Cooking oil(21.01%), Vegetable ghee(15.8%), Milk powder(14.9%), Fresh fruits(14.69%), Pulse Masoor(14.5%), Fish(13.69%), Condiments and Spices(13.39%), Pulse Gram(13.21%), Beverages(12.55%), Meat(10.95%), Wheat Flour(10.77%), and Sweetmeat(10.26%).

Decreased: Tomatoes(24.56%), Eggs(1.64%) and Gram Whole(1.51%).

Non-food Items Increased: Newspapers(33.33%), Postal Services(31.58%), Motor Fuels(23.18%), Motor Vehicles Accessories(19.53%), Motor Vehicles(17.86%), Doctor Clinic Fee(17.12%), Drugs and Medicines(14.51%), Hosiery(13.45%), Medical Tests(13.18%), Transport Services(11.55%), Household Equipment(11.42%).

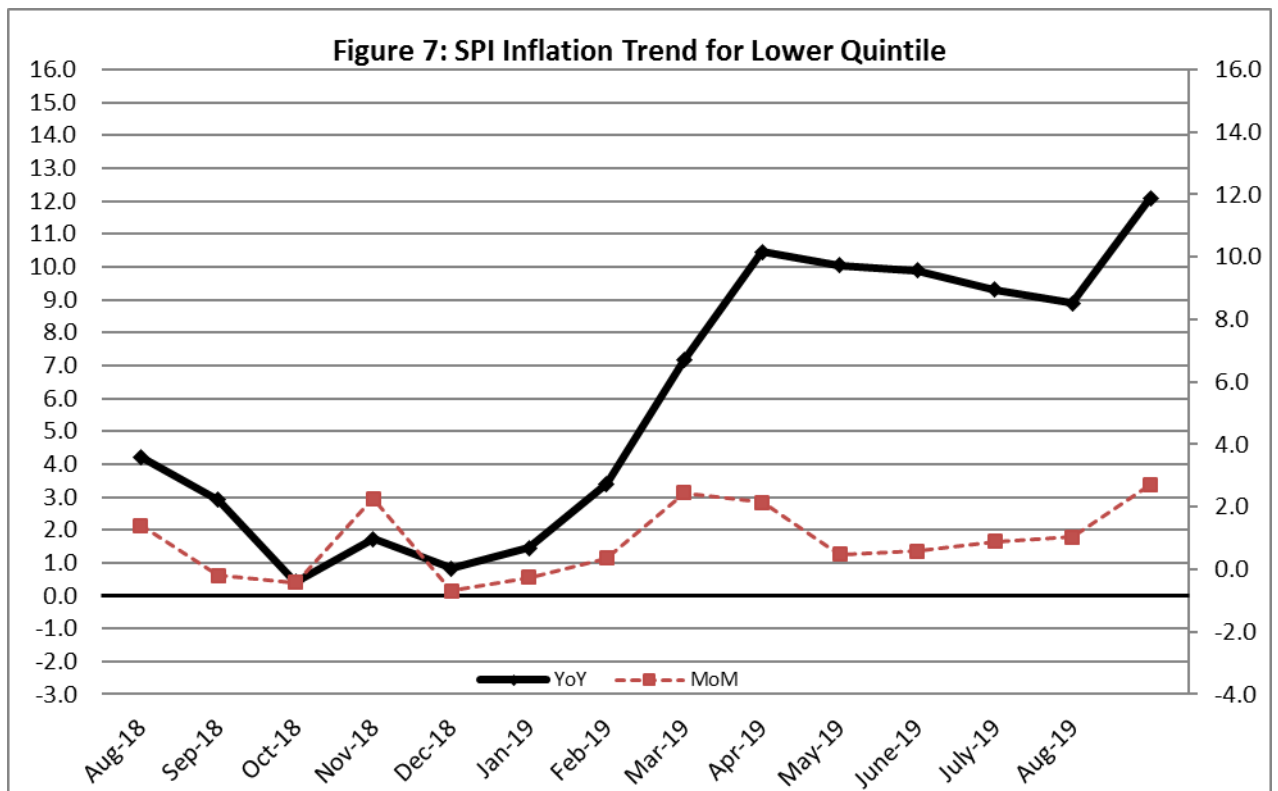
Decreased: Liquefied Hydrocarbons(2.36%) and Electricity Charges(0.79%).

IV. Sensitive Price Indicator

Quintile-wise percentage changes YoY and MoM are given below in Table 3. The series from August 2017 to August 2018 is also graphed below in Figure 3.

Table 4: Sensitive Price Indicator (Base 2015-16)					
Quintiles	Indices			% Change August 2019 Over	
	August 2019	July 2019	August 2018	July 2019	August 2018
1	126.15	122.81	112.54	2.72	12.09
2	121.84	118.56	107.99	2.77	12.83
3	124.48	121.28	106.67	2.64	16.70
4	122.27	119.12	104.82	2.64	16.65
5	126.19	123.24	108.18	2.39	16.65
Combined	123.85	120.79	107.42	2.53	15.30

Table 4.1 : Weekly Percentage Change of SPI During September-17					
Quintiles	% Change with Previous week				
	01-08-2019	08-08-2019	16-08-2019	22-08-2019	27-08-2019
Quintile 1	0.58	1.68	1.03	-0.35	-0.15
Combined	0.68	1.44	1.15	-0.43	-0.04



V. Wholesale Price Index

The Wholesale Price Index for August, 2018 increased by 0.36% over July 2018. It increased by 2.86% over the corresponding month of the last year. YoY and MoM movements, from August, 2017 to August, 2018 are also graphed below in Figure 4.

Main contributors to month-on-month and year-on-year percentage changes are given below and detail is given in Annexure B.

Table 5 : Wholesale Price Index by Group of Commodities (Base 2015-16)

No.	Group	Group Weight (%)	Indices			% Change August 2019 Over		Impact (In % points) Jul 2019 Over	
			Jul 2019	Jun 2019	Jul 2018	Jul 2019	Jun 2019	Jul 2018	Jul 2019
	General	100.00	140.39	138.66	123.08	1.25	14.06	1.25	14.06
1.	Agriculture, Forestry & Fishery Products	25.77	128.79	128.38	121.82	0.32	5.72	0.08	1.46
2.	Ores & Minerals, Electricity, Gas & Water	12.01	159.39	159.32	107.66	0.04	48.05	0.01	5.05
3.	Food Products, Beverages & Tobacco, Textiles, Apparel & Leather Products	31.11	127.21	126.72	117.26	0.39	8.49	0.11	2.51
	i. Food Products, Bev. & Tobacco	20.07	120.86	120.09	108.51	0.64	11.38	0.11	2.01
	ii. Textiles and Apparel	10.33	140.72	140.76	135.19	-0.03	4.09	0.00	0.46
	iii. Leather Products	0.71	110.18	110.18	103.78	0.00	6.17	0.00	0.04
4.	Other Transportable Goods except Metal Products, Machinery & Equipment	22.40	166.83	160.42	145.11	4.00	14.97	1.03	3.95
5.	Metal Products, Machinery & Equipment	8.72	127.59	127.30	112.23	0.23	13.69	0.02	1.09

1. **Month-on-month** Top few commodities which varied from previous month i.e. October, 2017 are given below:-

Increased: Dyeing Material(25.99%), Stimulant & Spice Crops(24.23%), Edible Roots / Potatoes(19.54%), Poultry(19.21%), Vegetables(10.07%), Diesel Oil(7.68%), Eggs(6.29%), Furnace Oil(5.7%), Kerosene Oil(5.46%), Motor Spirit(4.72%), Unmanufactured Tobacco(3.86%), Sugar Refined(3.31%), Pipe Fittings(2.24%), Raw Milk from Bovine Animals(1.38%), Bricks, Blocks & Tiles(1.31%), Steel Bar & Sheets(1.2%), Salt & Pure Sodium Chloride(1.12%).

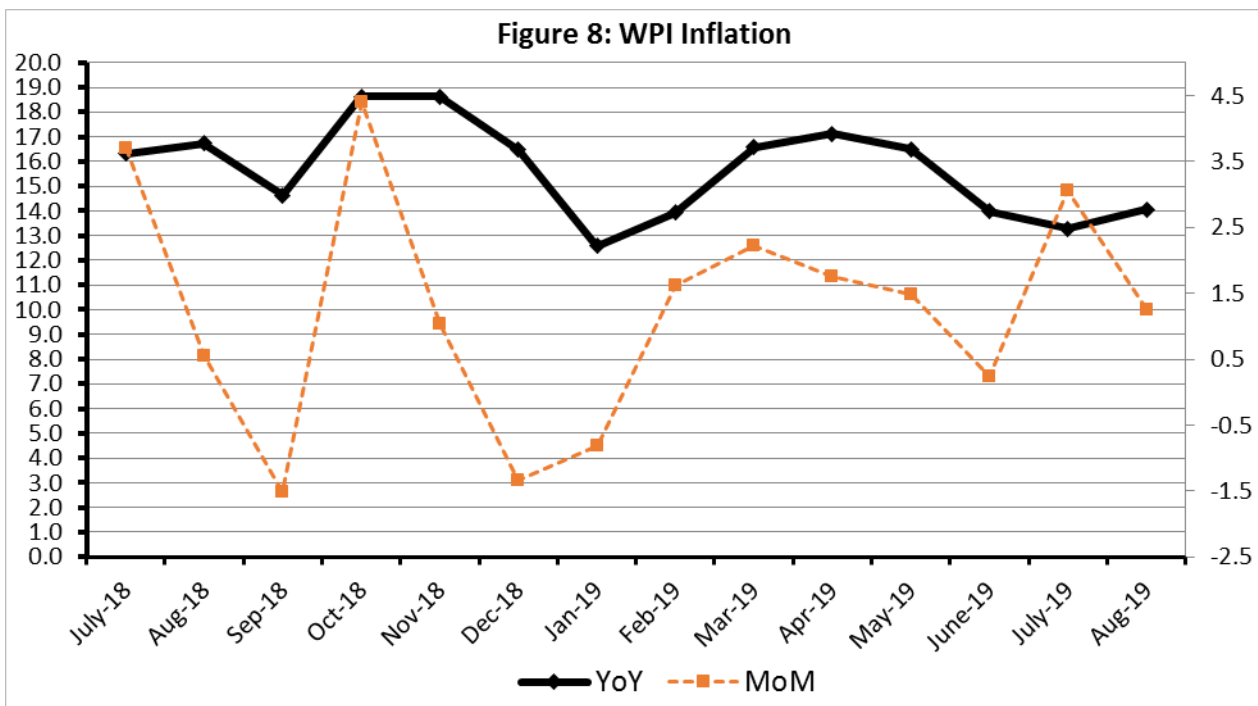
Decreased: Hides, Skins & Fur Skins, Raw(20.83%), Cultivators(16.04%), Fresh Fruits(7.7%), Sorghum / Jowar(5.5%), Maize(5.13%), Fibre Crops(2.73%), Cement(2.4%), Millet / Bajra(1.62%).

2. **Year-on-year** Top few commodities which varied from previous year i.e. August, 2016 are given below:-

Increased: Natural Gas Liquefied (87.74%), Poultry(64.29%), Stimulant & Spice Crops(59.93%), Edible Roots / Potatoes(58.76%), Sorghum / Jowar(56.93%), Lathe Machines(45.04%), Sugar Refined(34.95%), Dyeing Material(32.51%), Auto Tyres (31.8%), Spices(30.52%), Sugar Crops(27.27%), Motor Vehicles(24.84%), Cotton Seeds(24.27%), Steel Bar & Sheets(23.03%), Chocolate(22.64%), Motor Spirit(21.63%), Kerosene Oil(20.98%), Diesel Oil(20.12%), and Fertilizers(20.07%).

Decreased: Hides, Skins & Fur Skins, Raw(28.27%), Fiber Crops(8.33%), Eggs(6.09%), Vegetables & Fruit Juice(4.96%), Cement(2.57%) and Hosiery Products(1.11%).

Figure 8: WPI Inflation



Annexure A:CPI (Urban) Index Numbers by Commodity Groups & Commodities (2015-16=100)

Item and Specification	Weight	Index Numbers			% Change in Aug 2019 over	
		Aug 19	Jul 19	Aug 18	Jul 2019	Aug 2018
General	100.0000	126.77	124.95	114.58	+ 1.46	+ 10.64
Food and non-alcoholic Bevera	30.4215	123.19	118.77	109.39	+ 3.72	+ 12.62
01 Wheat	0.6120	108.06	108.38	99.37	- 0.30	+ 8.75
02 Wheat flour	3.0075	109.66	108.26	100.47	+ 1.29	+ 9.15
03 Wheat products	0.0936	112.56	111.56	103.49	+ 0.90	+ 8.76
04 Besan	0.0830	109.49	108.08	100.35	+ 1.30	+ 9.11
05 Rice	1.1804	127.33	126.95	121.59	+ 0.30	+ 4.72
06 Bakery and confectionary	0.4770	117.16	114.52	106.92	+ 2.31	+ 9.58
07 Nimco	0.1224	115.50	113.69	108.88	+ 1.59	+ 6.08
08 Meat	2.0411	136.89	135.95	122.17	+ 0.69	+ 12.05
09 Chicken	1.3631	145.70	103.52	83.13	+ 40.75	+ <u>75.27</u>
10 Fish	0.3855	121.83	121.14	107.53	+ 0.57	+ 13.30
11 Milk fresh	7.1070	114.39	113.88	109.94	+ 0.45	+ 4.05
12 Milk products	0.6407	117.00	116.53	112.94	+ 0.40	+ 3.59
13 Milk powder	0.3106	119.17	118.54	107.45	+ 0.53	+ 10.91
14 Eggs	0.5083	112.79	102.76	112.67	+ 9.76	+ 0.11
15 Butter	0.0932	136.56	136.49	109.23	+ 0.05	+ 25.02
16 Mustard oil	0.0120	111.36	109.45	105.19	+ 1.75	+ 5.87
17 Cooking oil	1.1016	127.53	121.83	106.46	+ 4.68	+ 19.79
18 Vegetable ghee	1.0324	126.59	121.51	108.08	+ 4.18	+ 17.13
19 Dry fruits	0.3299	117.74	117.63	106.62	+ 0.09	+ 10.43
20 Fresh fruits	1.4363	117.99	139.86	109.05	- 15.64	+ 8.20
21 Pulse masoor	0.1624	85.66	83.54	75.45	+ 2.54	+ 13.53
22 Pulse moong	0.1697	105.67	104.84	72.22	+ 0.79	+ 46.32
23 Pulse mash	0.1152	75.72	74.96	58.46	+ 1.01	+ 29.52
24 Pulse gram	0.1660	106.81	105.29	95.86	+ 1.44	+ 11.42
25 Gram whohe	0.0912	117.64	117.58	117.44	+ 0.05	+ 0.17
26 Beans	0.0408	111.12	110.62	101.54	+ 0.45	+ 9.43
27 Potatoes	0.4496	157.28	148.09	123.51	+ 6.21	+ 27.34
28 Onions	0.5928	160.85	121.57	99.84	+ 32.31	+ <u>61.11</u>
29 Tomatoes	0.3459	135.99	98.92	191.03	+ 37.47	- 28.81
30 Fresh vegetables	1.5306	137.43	121.79	125.96	+ 12.84	+ 9.11
31 Sugar	1.1130	120.07	115.70	89.74	+ 3.78	+ 33.80
32 Gur	0.0379	123.81	120.76	93.80	+ 2.53	+ 31.99
33 Honey	0.1017	113.38	113.24	108.30	+ 0.12	+ 4.69
34 Sweetmeat	0.3535	130.71	128.77	120.64	+ 1.51	+ 8.35
35 Ice cream	0.1044	119.23	117.76	109.12	+ 1.25	+ 9.27
36 Condiments and Spices	1.3340	139.73	135.32	114.58	+ 3.26	+ 21.95
37 Dessert preparation	0.0419	112.62	112.18	105.61	+ 0.39	+ 6.64
38 Tea	0.8427	128.39	128.35	118.84	+ 0.03	+ 8.04
39 Beverages	0.8906	118.97	116.59	108.77	+ 2.04	+ 9.38
Alcoholic Beverages, Tobacco	0.8540	141.93	141.67	110.48	+ 0.18	+ 28.47
40 Cigarettes	0.7167	134.35	134.05	97.38	+ 0.22	+ 37.96
41 Pan prepared	0.1373	181.46	181.46	178.86	+ 0.00	+ 1.45
Clothing and footwear	8.0096	123.36	121.60	113.11	+ 1.45	+ 9.06
42 Cotton cloth	2.2227	124.77	123.51	110.37	+ 1.02	+ 13.05
43 Woolen cloth	0.8361	115.35	113.89	108.12	+ 1.28	+ 6.69
44 Readymade garments	1.3196	126.21	125.60	119.86	+ 0.49	+ 5.30
45 Woolen readymade garments	0.4307	115.81	115.81	108.52	+ 0.00	+ 6.72
46 Tailoring	1.0741	129.07	128.73	122.32	+ 0.26	+ 5.52
47 Hosiry	0.4070	123.52	123.04	112.83	+ 0.39	+ 9.47
48 Dopatta	0.1713	114.86	113.01	109.22	+ 1.64	+ 5.16
49 Cleaning and laundring	0.0665	126.08	124.21	116.46	+ 1.51	+ 8.26
50 Footware	1.4816	122.07	116.51	109.04	+ 4.77	+ 11.95
Housing, water, Elec., Gas an	27.0332	127.15	127.20	117.08	- 0.04	+ 8.60
51 House rent	19.2558	126.65	126.65	118.96	+ 0.00	+ 6.46
52 Construcion input items	0.3765	136.74	135.46	115.70	+ 0.94	+ 18.18
53 Construction wage rates	0.2025	142.04	141.48	128.76	+ 0.40	+ 10.31
54 Water supply	0.5269	122.55	119.55	118.59	+ 2.51	+ 3.34
55 Garbage collection	0.1064	145.38	145.38	143.43	+ 0.00	+ 1.36

Annexure A:CPI (Urban) Index Numbers by Commodity Groups & Commodities (2015-16=100)

Item and Specification	Weight	Index Numbers			% Change in Aug 2019 over	
		Aug 19	Jul 19	Aug 18	Jul 2019	Aug 2018
56 Electricity charges	4.5562	108.25	108.25	109.11	+ 0.00	- 0.79
57 Gas charges	1.0807	216.94	216.94	101.07	+ 0.00	+ 114.64
58 Liquified Hydrocarbons	0.5064	128.04	135.05	150.98	- 5.19	- 15.19
59 Solid Fuel	0.4218	108.75	108.52	105.22	+ 0.21	+ 3.35
Furnishing and household equi	4.0937	123.05	122.28	109.44	+ 0.63	+ 12.44
60 Furniture and furnishing	0.4750	120.43	119.52	111.98	+ 0.76	+ 7.55
61 Carpets	0.0308	107.32	106.49	104.53	+ 0.78	+ 2.67
62 Household textiles	0.3420	122.53	121.89	113.26	+ 0.53	+ 8.18
63 Household equipments	1.0032	121.61	121.02	111.14	+ 0.49	+ 9.42
64 Plastic products	0.0536	114.39	114.06	110.02	+ 0.29	+ 3.97
65 Major tools & equipments	0.0084	117.82	117.75	112.56	+ 0.06	+ 4.67
66 Washing soap/detergents/match	1.4112	122.93	121.58	107.77	+ 1.11	+ 14.07
67 Household servant	0.7695	128.31	128.31	107.12	+ 0.00	+ 19.78
Health	2.3098	133.97	133.63	119.97	+ 0.25	+ 11.67
68 Drugs and medicines	1.0735	131.84	131.83	112.49	+ 0.01	+ 17.20
69 Therapeutic Appliances and Eq	0.0054	106.58	106.46	106.29	+ 0.11	+ 0.27
70 Doctor (MBBS) clinic fee	0.4044	157.92	157.13	137.34	+ 0.50	+ 14.98
71 Dental services	0.0156	115.30	114.79	116.76	+ 0.44	- 1.25
72 Medical tests	0.2367	121.34	120.65	112.26	+ 0.57	+ 8.09
73 Hospitals services	0.5742	127.04	126.57	125.10	+ 0.37	+ 1.55
Transport	6.1368	144.36	141.72	121.29	+ 1.86	+ 19.02
74 Motor vehicles	0.8097	144.24	141.89	119.48	+ 1.66	+ 20.72
75 Motor vehicle accessories	0.1941	122.32	121.74	98.92	+ 0.48	+ 23.66
76 Motor fuel	2.9088	162.60	156.53	131.73	+ 3.88	+ 23.43
77 Mechanical services	0.4290	121.22	120.34	108.99	+ 0.73	+ 11.22
78 Motor vehicle tax	0.0482	126.72	126.72	105.82	+ 0.00	+ 19.75
79 Transport services	1.7470	122.65	124.88	110.66	- 1.79	+ 10.83
Communication	2.3536	107.84	107.80	102.18	+ 0.04	+ 5.54
80 Postal services	0.0190	147.05	147.05	145.98	+ 0.00	+ 0.73
81 Communication apparatus	0.4524	116.73	116.55	104.79	+ 0.15	+ 11.39
82 Communication Services	1.8822	105.30	105.30	101.11	+ 0.00	+ 4.14
Recreation and culture	1.7301	116.23	115.31	108.14	+ 0.80	+ 7.48
83 Recreation and culture	0.6478	108.11	106.83	106.00	+ 1.20	+ 1.99
84 Text books	0.6655	116.83	115.92	106.20	+ 0.79	+ 10.01
85 Newspapers	0.0716	151.55	151.55	120.00	+ 0.00	+ 26.29
86 stationery	0.3452	122.97	122.54	113.44	+ 0.35	+ 8.40
Education	4.8807	143.62	143.47	133.75	+ 0.10	+ 7.38
87 Education	4.8807	143.62	143.47	133.75	+ 0.10	+ 7.38
Restaurants and hotels	7.4050	123.22	122.67	117.30	+ 0.45	+ 5.05
88 Readymade food	5.5235	122.67	122.04	115.94	+ 0.52	+ 5.80
89 Marriage Hall Charges	1.7514	125.79	125.45	122.04	+ 0.27	+ 3.07
90 Accommodation Services	0.1301	112.07	112.01	111.14	+ 0.05	+ 0.84
Misc. goods and services	4.7720	128.97	127.23	114.58	+ 1.37	+ 12.56
91 Personal Grooming Services	0.8001	122.08	121.77	114.83	+ 0.25	+ 6.31
92 Electrical Appliances for Per	0.0465	115.37	114.97	113.93	+ 0.35	+ 1.26
93 Appliances/Articles/Products	2.9807	120.74	120.23	110.10	+ 0.42	+ 9.66
94 Personal Effects n.e.c.	0.9447	161.43	154.58	128.58	+ 4.43	+ 25.55

Annexure B:CPI (Rural) Index Numbers by Commodity Groups & Commodities (2015-16=100)

Item and Specification	Weight	Index Numbers			% Change in Aug 2019 over	
		Aug 19	Jul 19	Aug 18	Jul 2019	Aug 2018
General	100.0000	124.56	122.22	112.96	+ 1.91	+ 10.27
Food and non-alcoholic Bevera	40.8668	122.83	119.15	109.07	+ 3.09	+ 12.62
01 Wheat	3.4736	107.49	107.83	99.17	- 0.32	+ 8.39
02 Wheat Flour	3.4297	109.67	109.05	99.01	+ 0.57	+ 10.77
03 Wheat Products	0.1068	114.05	113.40	108.40	+ 0.57	+ 5.21
04 Besan	0.0728	112.39	110.62	102.33	+ 1.60	+ 9.83
05 Rice	1.5501	153.15	151.90	141.62	+ 0.82	+ 8.14
06 Bakery and Confectionary	0.3702	116.38	116.04	108.56	+ 0.29	+ 7.20
07 Nimco	0.0774	113.42	111.84	107.36	+ 1.41	+ 5.64
08 Meat	1.7146	137.04	136.80	123.51	+ 0.18	+ 10.95
09 Chicken	1.4641	139.22	110.00	88.97	+ 26.56	+ <u>56.48</u>
10 Fish	0.2640	122.71	126.24	107.93	- 2.80	+ 13.69
11 Milk fresh	10.3803	118.71	117.08	112.77	+ 1.39	+ 5.27
12 Milk products	0.9624	120.60	119.68	114.23	+ 0.77	+ 5.58
13 Milk powder	0.1062	115.26	113.17	100.31	+ 1.85	+ 14.90
14 Eggs	0.5665	110.13	100.31	111.97	+ 9.79	- 1.64
15 Butter	0.3333	120.95	120.42	113.33	+ 0.44	+ 6.72
16 Mustard oil	0.0136	117.35	115.78	109.29	+ 1.36	+ 7.37
17 Cooking oil	0.6011	132.59	128.46	109.57	+ 3.22	+ 21.01
18 Vegetable ghee	2.3764	132.32	129.08	114.27	+ 2.51	+ 15.80
19 Dry fruits	0.2496	125.57	125.25	118.38	+ 0.26	+ 6.07
20 Fresh fruits	1.4505	118.58	149.34	103.39	- 20.60	+ 14.69
21 Pulse Masoor	0.2076	86.17	84.95	75.26	+ 1.44	+ 14.50
22 Pulse Moong	0.2510	111.78	108.73	74.04	+ 2.81	+ <u>50.97</u>
23 Pulse Mash	0.1465	77.98	76.19	59.35	+ 2.35	+ 31.39
24 Pulse Gram	0.2751	106.71	105.20	94.26	+ 1.44	+ 13.21
25 Gram Whole	0.1116	116.01	115.67	117.79	+ 0.29	- 1.51
26 Beans	0.0896	120.87	122.99	113.93	- 1.72	+ 6.09
27 Potatoes	0.7437	168.07	142.22	131.22	+ 18.18	+ 28.08
28 Onions	0.8965	149.31	116.20	91.88	+ 28.49	+ <u>62.51</u>
29 Tomatoes	0.5069	118.96	87.86	157.68	+ 35.40	- 24.56
30 Fresh Vegetables	2.0947	122.92	110.78	111.91	+ 10.96	+ 9.84
31 Sugar	2.0296	122.67	116.60	89.32	+ 5.21	+ 37.34
32 Gur	0.1522	129.03	123.25	91.08	+ 4.69	+ 41.67
33 Honey	0.0296	118.92	118.92	112.75	+ 0.00	+ 5.47
34 Sweetmeat	0.3967	120.71	119.94	109.48	+ 0.64	+ 10.26
35 Ice Cream	0.0568	119.16	117.99	108.14	+ 0.99	+ 10.19
36 Condiments and Spices	1.4919	124.73	120.52	110.00	+ 3.49	+ 13.39
37 Dessert Preparation	0.0133	110.93	109.88	104.81	+ 0.96	+ 5.84
38 Tea	1.2566	126.28	125.80	115.73	+ 0.38	+ 9.12
39 Beverages	0.5537	121.03	114.54	107.53	+ 5.67	+ 12.55
Alcoholic Beverages, Tobacco	1.2786	125.83	125.43	95.86	+ 0.32	+ 31.26
40 Cigarettes	1.2364	125.14	124.78	94.54	+ 0.29	+ 32.37
41 Pan Prepared	0.0422	146.13	144.56	134.58	+ 1.09	+ 8.58
Clothing and footwear	9.4826	128.27	126.75	118.02	+ 1.20	+ 8.68
42 Cotton Cloth	2.8381	136.44	134.06	123.88	+ 1.78	+ 10.14
43 Woolen Cloth	1.0959	121.01	119.21	112.23	+ 1.51	+ 7.82
44 Readymade Garments	1.1345	126.70	125.04	114.33	+ 1.33	+ 10.82
45 Woolen Readymade Garments	0.5401	119.69	119.13	117.46	+ 0.47	+ 1.90
46 Tailoring	1.2999	130.79	129.89	123.93	+ 0.69	+ 5.54
47 Hosiry	0.4322	138.04	137.26	121.68	+ 0.57	+ 13.45
48 Dopatta	0.2078	121.30	120.21	111.90	+ 0.91	+ 8.40
49 Cleaning and Laundering	0.0176	117.70	117.70	112.35	+ 0.00	+ 4.76
50 Footware	1.9165	120.62	119.70	110.86	+ 0.77	+ 8.80
Housing, water, Elec., Gas an	18.4853	120.36	119.99	116.12	+ 0.31	+ 3.65
51 House Rent	8.6110	125.99	125.99	119.41	+ 0.00	+ 5.51
52 Construction Input Items	0.6306	114.41	116.66	110.11	- 1.93	+ 3.91
53 Construction Wage Rates	0.2526	139.75	138.07	126.58	+ 1.22	+ 10.40
54 Water Supply	0.0645	154.00	142.97	121.10	+ 7.71	+ 27.17
55 Garbage Collection	0.0080	132.05	132.05	130.71	+ 0.00	+ 1.03

Annexure B:CPI (Rural) Index Numbers by Commodity Groups & Commodities (2015-16=100)

Item and Specification	Weight	Index Numbers			% Change in Aug 2019 over	
		Aug 19	Jul 19	Aug 18	Jul 2019	Aug 2018
56 Electricity Charges	3.4431	108.25	108.25	109.11	+ 0.00	- 0.79
57 Liquified Hydrocarbons	0.9994	125.18	123.64	128.20	+ 1.25	- 2.36
58 Solid Fuel	4.4761	116.98	115.73	112.63	+ 1.08	+ 3.86
Furnishing and household equi	4.1031	120.77	119.09	109.57	+ 1.41	+ 10.22
59 Furniture and Furnishing	0.5786	121.54	119.03	111.83	+ 2.11	+ 8.68
60 Household Textiles	0.4382	118.96	117.33	111.61	+ 1.39	+ 6.59
61 Household Equipments	1.2774	127.48	126.16	114.41	+ 1.05	+ 11.42
62 Plastic Products	0.0776	129.62	128.70	118.99	+ 0.71	+ 8.93
63 Major Tools and Equipments	0.0324	113.51	111.79	111.10	+ 1.54	+ 2.17
64 Washing Soaps, Detergents and	1.6989	115.65	113.95	104.17	+ 1.49	+ 11.02
Health	3.5141	131.74	129.98	117.42	+ 1.35	+ 12.20
65 Drugs and Medicines	1.5792	132.64	131.57	115.83	+ 0.81	+ 14.51
66 Doctor Clinic Fee	0.5128	145.20	138.63	123.98	+ 4.74	+ 17.12
67 Dental Services	0.0181	112.95	112.95	108.60	+ 0.00	+ 4.01
68 Medical Tests	0.3967	133.92	132.54	118.33	+ 1.04	+ 13.18
69 Hospitals Services	1.0073	122.95	122.38	116.38	+ 0.47	+ 5.65
Transport	5.5580	142.48	139.88	121.16	+ 1.86	+ 17.60
70 Motor Vehicles	0.7305	125.73	125.48	106.68	+ 0.20	+ 17.86
71 Motor Vehicles Accessories	0.1572	127.92	126.45	107.02	+ 1.16	+ 19.53
72 Motor Fuels	2.4932	162.00	155.45	131.52	+ 4.21	+ 23.18
73 Mechanical Services	0.3645	146.72	146.72	140.81	+ 0.00	+ 4.20
74 Motor Vehicle Tax	0.0174	127.98	127.98	108.58	+ 0.00	+ 17.87
75 Transport Services	1.7952	122.74	124.02	110.03	- 1.03	+ 11.55
Communication	1.9940	104.60	104.43	102.47	+ 0.16	+ 2.08
76 Postal Services	0.0070	149.43	149.43	113.57	+ 0.00	+ 31.58
77 Communication Apparatus	0.3362	118.27	117.22	112.06	+ 0.90	+ 5.54
78 Communication Services	1.6508	101.63	101.63	100.47	+ 0.00	+ 1.15
Recreation and culture	1.3764	119.33	118.92	110.51	+ 0.34	+ 7.98
79 Recreation and Culture	0.4763	121.67	120.62	112.02	+ 0.87	+ 8.61
80 Text Books	0.5047	109.63	109.50	102.04	+ 0.12	+ 7.44
81 Newspapers	0.0230	161.68	161.68	121.26	+ 0.00	+ 33.33
82 Stationery	0.3724	126.88	126.88	119.37	+ 0.00	+ 6.29
Education	2.1342	132.50	131.93	125.80	+ 0.43	+ 5.33
83 Education	2.1342	132.50	131.93	125.80	+ 0.43	+ 5.33
Restaurants and hotels	6.1895	126.91	124.47	117.35	+ 1.96	+ 8.15
84 Readymade Food	3.8001	128.40	126.76	119.06	+ 1.29	+ 7.84
85 Marriage Hall Charges	2.2525	125.92	122.00	115.44	+ 3.21	+ 9.08
86 Accommodation Services	0.1369	101.59	101.59	101.59	+ 0.00	+ 0.00
Misc. goods and services	5.0174	128.13	124.79	112.30	+ 2.68	+ 14.10
87 Personal Grooming Services	1.5363	129.57	125.40	116.91	+ 3.33	+ 10.83
88 Appliances/Articles/Products	2.2746	114.47	113.69	107.30	+ 0.69	+ 6.68
89 Personal Effects n.e.c.	1.2065	152.07	144.94	115.84	+ 4.92	+ 31.28

Annexure C: Wholesale Price Indices by Major Groups & Commodities

(2015-16=100)

Item and Specification	Weight	Index Numbers			% Change in Aug 2019 over			
		Aug 19	Jul 19	Aug 18	Jul 2019	Aug 2018		
General	100.0000	140.39	138.66	123.08	+	1.25	+	14.06
Agriculture Forestry & Fisher	25.7674	128.79	128.38	121.82	+	0.32	+	5.72
001 Wheat	0.6297	106.16	105.81	98.94	+	0.33	+	7.30
002 Maize	0.6764	133.40	140.61	114.73	-	5.13	+	16.27
003 Rice	2.4413	140.90	141.24	125.24	-	0.24	+	12.50
004 Sorghum / Jowar	0.0214	158.56	167.78	101.04	-	5.50	+	<u>56.93</u>
005 Millet / Bajra	0.0374	143.96	146.33	133.51	-	1.62	+	7.83
006 Vegetables	1.2441	148.90	135.28	128.39	+	10.07	+	15.97
007 Fresh Fruits	1.5144	125.03	135.46	111.71	-	7.70	+	11.92
008 Dry Fruits	0.2478	123.86	123.36	120.85	+	0.41	+	2.49
009 Cotton Seeds	1.1511	119.21	119.21	95.93	+	0.00	+	24.27
010 Other Oil Seeds	0.0722	126.87	126.55	115.53	+	0.25	+	9.82
011 Edible Roots / Potatoes	0.2540	204.33	170.93	128.70	+	19.54	+	<u>58.76</u>
012 Stimulant & Spice Crops	0.1634	221.44	178.25	138.46	+	24.23	+	<u>59.93</u>
013 Pulses	0.4901	104.86	104.26	96.64	+	0.58	+	8.51
014 Sugar Crops	1.0725	112.02	112.02	88.02	+	0.00	+	27.27
015 Fibre Crops	5.3169	152.05	156.32	165.87	-	2.73	-	8.33
016 Unmanufactured Tobacco	0.0742	159.02	153.11	145.41	+	3.86	+	9.36
017 Poultry	0.5633	132.76	111.37	80.81	+	19.21	+	<u>64.29</u>
018 Raw Milk from Bovine Animals	7.0279	110.08	108.58	108.19	+	1.38	+	1.75
019 Eggs	0.5034	105.80	99.54	112.66	+	6.29	-	6.09
020 Raw Animal Materials / Wool	0.0351	105.16	105.82	100.70	-	0.62	+	4.43
021 Hides, Skins & Fur Skins, Raw	0.4834	34.78	43.93	48.49	-	20.83	-	28.27
022 Fuel Wood in Logs	0.0179	102.91	102.91	102.46	+	0.00	+	0.44
023 Fish Live Fresh or Chilled	1.7295	146.42	146.34	131.56	+	0.05	+	11.30
Ores/Minerals, Elec., Gas & W	12.0069	159.39	159.32	107.66	+	0.04	+	48.05
024 Coal not Agglomerated	0.7508	82.17	82.17	82.17	+	0.00	+	0.00
025 Natural Gas Liquefied	5.7065	195.96	195.82	104.38	+	0.07	+	<u>87.74</u>
026 Salt & Pure Sodium Chloride	0.0584	145.31	143.70	126.88	+	1.12	+	14.53
027 Electrical Energy	5.4912	132.10	132.10	114.34	+	0.00	+	15.53
Food, Beverages, Tobacco, Textil	31.1122	127.21	126.72	117.26	+	0.39	+	8.49
Food Products, Beverages &	20.0718	120.86	120.09	108.51	+	0.64	+	11.38
028 Meat of Animals	3.4559	131.57	130.66	122.83	+	0.70	+	7.12
029 Vegetables & Fruit Juice	0.0058	112.28	111.64	118.14	+	0.57	-	4.96
030 Dried Fruits & Nuts	0.1733	149.83	149.04	133.60	+	0.53	+	12.15
031 Fruit Juices	0.3880	115.65	115.44	108.16	+	0.18	+	6.92
032 Vegetable Oils Refined	1.9242	116.01	115.37	104.87	+	0.55	+	10.62
033 Vegetable Ghee	1.5632	127.53	127.13	110.36	+	0.31	+	15.56
034 Oil Cakes	0.9611	128.36	128.33	113.33	+	0.02	+	13.26
035 Processed Liquid Milk	4.4437	121.40	120.92	113.16	+	0.40	+	7.28
036 Milk & Cream in Solid Form	0.0316	121.13	120.72	101.90	+	0.34	+	18.87
037 Ice Cream	0.0047	107.34	107.34	100.36	+	0.00	+	6.95
038 Dairy Products N.E.C	0.0117	125.82	125.54	109.38	+	0.22	+	15.03
039 Wheat Flour	2.3034	107.74	107.72	100.33	+	0.02	+	7.39
040 Other Cereal Flour	0.0604	108.72	107.79	98.27	+	0.86	+	10.63
041 Sugar Refined	1.7975	120.01	116.16	88.93	+	3.31	+	34.95
042 Chocolate	0.0139	81.57	81.57	66.51	+	0.00	+	22.64
043 Sugar Confectionary	0.0738	123.81	123.81	106.67	+	0.00	+	16.07
044 Coffee & Tea	0.7303	121.17	120.65	113.47	+	0.43	+	6.79
045 Spices	0.1449	139.71	139.65	107.04	+	0.04	+	30.52
046 Other Food Products	0.0336	109.25	109.25	101.30	+	0.00	+	7.85
047 Mineral Water	0.0207	117.94	117.89	112.57	+	0.04	+	4.77
048 Beverages	0.6303	122.73	121.66	117.24	+	0.88	+	4.68
049 Tobacco Products	1.2998	104.23	104.23	86.96	+	0.00	+	19.86
Textiles & Apparels	10.3289	140.72	140.76	135.19	-	0.03	+	4.09
050 Cotton Yarn	5.2491	166.90	167.51	162.78	-	0.36	+	2.53
051 Nylon Yarn	0.1719	95.24	95.24	95.24	+	0.00	+	0.00
052 Blended Yarn	0.1689	122.49	122.07	113.25	+	0.34	+	8.16
053 Woven Fabrics	0.0128	123.42	123.42	116.48	+	0.00	+	5.96
054 Cotton Fabrics	0.6343	109.09	108.05	104.12	+	0.96	+	4.77
055 Other Fabrics	1.1016	112.30	110.87	107.19	+	1.29	+	4.77
056 Silk & Reyon Fabrics	0.7350	114.15	113.69	103.40	+	0.40	+	10.40

Annexure C: Wholesale Price Indices by Major Groups & Commodities

(2015-16=100)

Item and Specification	Weight	Index Numbers			% Change in Aug 2019 over	
		Aug 19	Jul 19	Aug 18	Jul 2019	Aug 2018
057 Towels	0.1235	109.39	108.38	108.48	+ 0.93	+ 0.84
058 Blankets	0.0029	95.81	95.81	95.14	+ 0.00	+ 0.70
059 Bed Sheets	0.0913	106.74	106.74	103.96	+ 0.00	+ 2.67
060 Quilts	0.0019	104.68	104.68	103.52	+ 0.00	+ 1.12
061 Woolen Carpets	0.0383	125.43	125.43	122.99	+ 0.00	+ 1.98
062 Synthetic Carpets	0.0566	105.96	105.96	101.85	+ 0.00	+ 4.04
063 Hosiery Products	0.8832	110.02	110.29	111.25	- 0.24	- 1.11
064 Readymade Garments	1.0576	123.15	122.90	106.62	+ 0.20	+ 15.50
Leather Products	0.7115	110.18	110.18	103.78	+ 0.00	+ 6.17
065 Leather Without Hair	0.2973	105.65	105.65	96.94	+ 0.00	+ 8.98
066 Other Leather N.E.C	0.2567	106.90	106.90	99.25	+ 0.00	+ 7.71
067 Footwears	0.1575	124.07	124.07	124.07	+ 0.00	+ 0.00
Other Transportable Goods	22.3979	166.83	160.42	145.11	+ 4.00	+ 14.97
068 Timber	0.0165	111.75	111.75	109.91	+ 0.00	+ 1.67
069 Printing Paper	0.4279	126.46	119.93	114.63	+ 5.44	+ 10.32
070 Hard Board	0.1579	146.50	146.50	146.50	+ 0.00	+ 0.00
071 Motor Spirit	1.6268	166.88	159.36	137.20	+ 4.72	+ 21.63
072 Diesel Oil	5.4849	189.26	175.76	157.56	+ 7.68	+ 20.12
073 Kerosine Oil	0.2151	203.65	193.10	168.33	+ 5.46	+ 20.98
074 Furnace Oil	3.2664	294.09	278.22	256.88	+ 5.70	+ 14.49
075 Mobil Oil	0.7114	120.04	118.99	108.11	+ 0.88	+ 11.04
076 Chemicals	1.7720	128.10	127.96	109.96	+ 0.11	+ 16.50
077 Dyeing Material	0.1539	136.76	108.55	103.21	+ 25.99	+ 32.51
078 Fertilizers	2.8657	101.63	102.11	84.64	- 0.47	+ 20.07
079 Pesticides	0.2763	107.60	107.60	104.70	+ 0.00	+ 2.77
080 Insecticides	0.1276	112.34	112.92	108.23	- 0.51	+ 3.80
081 Paints & Varnishes	0.1916	124.13	123.82	117.30	+ 0.25	+ 5.82
082 Medicines	1.1428	129.13	129.10	114.60	+ 0.02	+ 12.68
083 Soaps & Detergents	0.8168	109.02	108.92	104.96	+ 0.09	+ 3.87
084 Auto Tyres	0.2703	121.30	121.23	92.03	+ 0.06	+ 31.80
085 Plastic Products	0.4550	108.11	108.04	102.81	+ 0.06	+ 5.16
086 Glass sheets	0.2089	142.86	142.25	129.64	+ 0.43	+ 10.20
087 Other Glass Articles	0.1635	131.03	131.03	119.93	+ 0.00	+ 9.26
088 Ceramics & Sanitary Fixture	0.0244	123.16	123.16	112.41	+ 0.00	+ 9.56
089 Bricks, Blocks & Tiles	0.1566	119.27	117.73	105.75	+ 1.31	+ 12.78
090 Cement	1.8145	111.08	113.81	114.01	- 2.40	- 2.57
091 Bed Foam	0.0006	118.28	118.27	106.07	+ 0.01	+ 11.51
092 Matches	0.0505	1144.3	1130.3	1127.3	+ 1.24	+ 1.51
Metal Product, Machinery & Eq	8.7156	127.59	127.30	112.23	+ 0.23	+ 13.69
093 Steel Bar & Sheets	1.4615	159.31	157.42	129.49	+ 1.20	+ 23.03
094 Pipe Fittings	0.0780	135.47	132.50	113.79	+ 2.24	+ 19.05
095 Steel Products	0.3879	132.93	132.93	118.40	+ 0.00	+ 12.27
096 Engines & Motors	0.0046	107.29	107.29	107.29	+ 0.00	+ 0.00
097 Vacuum Pumps	0.0155	107.56	107.56	107.56	+ 0.00	+ 0.00
098 Air Conditioners	0.0049	112.46	112.46	102.53	+ 0.00	+ 9.68
099 Cultivators	0.0551	87.11	103.75	87.11	- 16.04	+ 0.00
100 Chuff Cutter	0.1293	102.86	102.86	102.86	+ 0.00	+ 0.00
101 Tractors	0.0028	109.22	109.22	104.36	+ 0.00	+ 4.66
102 Lathe Machines	0.0525	168.06	168.06	115.87	+ 0.00	+ 45.04
103 Concrete Mixture	0.0107	100.00	100.00	100.00	+ 0.00	+ 0.00
104 Fridge,WashM,SewM,Fans,Iron	1.1645	137.58	137.35	116.85	+ 0.17	+ 17.74
105 Electric Wires	0.0912	122.14	122.14	115.52	+ 0.00	+ 5.73
106 Lighting Equipments	1.4431	110.13	110.13	106.55	+ 0.00	+ 3.36
107 Radio & Television	0.1843	97.48	96.80	92.44	+ 0.70	+ 5.45
108 Motor Vehicles	0.0244	150.63	150.63	120.66	+ 0.00	+ 24.84
109 Motorcycles	0.2570	118.24	118.06	108.68	+ 0.15	+ 8.80
110 Bicycles	3.3483	120.58	120.58	106.80	+ 0.00	+ 12.90

Annexure D: CPI (Urban) Items detail

Detail of CPI Urban Items with Base Year 2015-16		
No.	Item Description	Unit
Food and non-alcoholic Beverages		
1	Wheat	10 kg
2	Wheat Flour (Fine/Superior Quality)	1 kg
3	Wheat Flour (Average Quality)	1 kg
4	Wheat Flour Bag	20 kg
5	Suji	1 kg
6	Vermicelli (Packet)	1 kg
7	Besan	1 kg
8	Rice Basmati (Superior Quality)	1 kg
9	Rice Basmati 385/386	1 kg
10	Rice Basmati Broken (Average Quality)	1 kg
11	Rice IRRI-6/9 (Sindh/Punjab)	1 kg
12	Bread plain (Medium Size)	Each
13	Rusk (Papay) (Average Quality)	1 kg
14	Biscuit Bakery (Loose, Average Quality)	250 gm
15	Samosa (Vegetable, Average Quality)	Each
16	Nimko (Loose, Average Quality)	250 gm
17	Beef with Bone (Average Quality)	1 kg
18	Mutton (Average Quality)	1 kg
19	Chicken Farm Broiler (Live)	1 kg
20	Fish Rahu (Medium Size)	1 kg
21	Milk fresh (Un-boiled)	1 Litre
22	Milk Tetra Pack 1 Litre (MILK PAK/HALEEB/OLPERS)	Each
23	Curd	1 kg
24	LACTOGEN 400 gm Packet	Each
25	Powdered Milk NIDO 390 gm Polybag	Each
26	Eggs Farm	Dozen
27	Butter Local Packed 50 gm	Each
28	Mustard Oil (Average Quality)	1 kg
29	Cooking Oil DALDA or Other Similar Brand (SN), 5 Litre Tin	Each
30	Vegetable Ghee DALDA/HABIB 2.5 kg Tin	Each
31	Vegetable Ghee DALDA/HABIB or Other superior Quality 1 kg Pouch	Each
32	Almonds (Badam) Kaghazi with Shell (Average Quality)	1 kg
33	Groundnuts (Moong Phali) with shell	1 kg
34	Kinnu (Average Quality)	1 Dozen
35	Apple (Average Quality)	1 kg
36	Peach (Average Quality)	1 kg
37	Grapes (Angoor) (Average Quality)	1 kg
38	Bananas (Kela) Local	1 Dozen
39	Mango Kalmi (Average Quality)	1 kg
40	Guava (Amrood) (Average Quality)	1 kg
41	Watermelon (Turbooz)	1 kg
42	Muskmelon (Kharbuza)	1 kg
43	Pulse Masoor (Washed)	1 kg
44	Pulse Moong (Washed)	1 kg

Annexure D: CPI (Urban) Items detail

45	Pulse Mash (Washed)	1 kg
46	Pulse Gram	1 kg
47	Gram Whole Black (Average Quality)	1 kg
48	Gram Whole Yellow (Average Quality)	1 kg
49	Beans Red/White (Lobia)	1 kg
50	Potatoes	1 kg
51	Chips (Loose)	250 gm
52	Onions	1 kg
53	Tomatoes	1 kg
54	Turnip (Shalgham)	1 kg
55	Radish (Mooli)	1 kg
56	Cauliflower (Phool Gobhi)	1 kg
57	Bottlegourd (Loki)	1 kg
58	Lady Finger (Bhindi)	1 kg
59	Peas (Matar)	1 kg
60	Spinach (Paalak)	1 kg
61	Tinda	1 kg
62	Turai	1 kg
63	Karela	1 kg
64	Chilies (Green)	250 gm
65	Carrot (Gajar)	1 kg
66	Cucumber (Kheera)	1 kg
67	Lemon	250 gm
68	Garlic (Lehsun)	1 kg
69	Sugar Refined	1 kg
70	Gur (Average Quality)	1 kg
71	Honey MARHABA Bottle 500 gm	Each
72	Sweetmeat (Mixed Mithai)	1 kg
73	Ice Cream Walls Cup (Large Size)	Each
74	Cumin seed (Zeera) White NATIONAL 50 gm Packet	Each
75	Pepper Black NATIONAL 50 gm Packet	Each
76	Coriander Seed Powder NATIONAL 200 gm Packet	Each
77	Cardamom Large (Loose) (Average Quality)	50 gm
78	Cardamom Small (Average Quality)	50 gm
79	Salt Powdered (NATIONAL/SHAN) 800 gm Packet	Each
80	Chilies Powder NATIONAL 200 gm Packet	Each
81	Turmeric Powder NATIONAL 50 gm Packet	Each
82	Tomato Ketchup MITCHELLS/NATIONAL 1 kg Polybag	Each
83	Pickle MITCHELLS/NATIONAL Bottle (340 gm-400 gm)	Each
84	Ginger (Adrak)	500 gm
85	Custard Powder RAFHAN 300 gm Packet	Each
86	Tea Lipton Yellow Label 190 gm Packet	Each
87	Cold Drink (PEPSI/COCA-COLA) 1.5 Liter Bottle	Each
88	Fruit Juice Small Packet 250 ml	Each
89	Mineral Water NESTLE 1.5 Liter	Each
90	JAM-E-SHIREEN Standard Size (800 ml)	1 Bottle
Alcoholic Beverages, Tobacco		
91	Cigarettes Capstan 20'S Packet	Each
92	Cigarettes Gold Leaf 20'S Packet	Each

Annexure D: CPI (Urban) Items detail

93	Pan Prepared (Sweet with Beetle Nuts)	Each
Clothing and footwear		
94	Long Cloth 57" Gul Ahmed/AI Karam	1 Metre
95	Shirting (Average Quality)	1 Metre
96	Pant Cloth Wash & Wear (Average Quality)	1 Metre
97	Lawn Printed Gul Ahmed/AI Karam	1 Metre
98	Georgette (Average Quality)	1 Metre
99	Linen, Ladies (Average Quality)	1 Metre
100	Heavy Weight Suiting LAWRENCE PUR (Average Quality)	1 Metre
101	Full Pant Boy Length 24"/26"	Each
102	Shirt Boy Length 24"/26"	Each
103	School Uniform Boys (Pant & Shirt) 24"/26"	Suit
104	School Uniform Girls (Kameez & Shalwar) 24"/26"	Suit
105	Awami Suit Gents Wash & Wear (Average Quality)	Suit
106	Women Shalwar Kameez (Average Quality)	Suit
107	Pullover Gents Oxford/Bonanza	Each
108	Pullover Ladies Oxford/Bonanza	Each
109	Pullover Gents (Average Quality)	Each
110	Tailoring Charges Shirt (Men)	Each
111	Tailoring Charges Pant (Men)	Each
112	Tailoring Charges Awami Suit (Male)	Suit
113	Tailoring Charges Simple Suit (Female)	Suit
114	Underwear Medium Size (Average Quality)	Each
115	Vest "Baniyan" for Men Average Quality	Each
116	Brassier (Average Quality)	Each
117	Socks Nylon Local (Average Quality)	Pair
118	Dopatta Georgette (Average Quality)	Each
119	Dopatta Cotton (Average Quality)	Each
120	Chaddar (Wash-n-Wear) (2x2.5 Meter)	Each
121	Washing Charges Pant and Shirt Both	Each
122	Dry Cleaning Charges Pant Coat Both	Suit
123	Washing Charges Shalwar Kameez	Suit
124	Gents Shoes Paul Bata	Pair
125	Gents Sandal Bata	Pair
126	Gents Sponge Chappal Bata	Pair
127	Ladies Sandal Bata	Pair
128	Ladies Sponge Chappal Bata	Pair
129	Children Shoes Power Lite Bata	Pair
130	Gents Shoes Servis	Pair
131	Cheetah 50 Size 3-5 Servis	Pair
132	Shoe Repair Full Sole	Pair
133	Shoe Polish Charges	Pair
Housing, water, Elec., Gas and other fuels		
134	House Rent Combined	Quarterly
135	Synthetic Enamel ICI Balti 3.64 Litre	Each
136	Cement (Local) 50 kg Bag	Each
137	Bricks New 1st Class	1000 No.
138	Cement Blocks (6"x8"x12")	100 No.
139	Bajri	100 cu ft

Annexure D: CPI (Urban) Items detail

140	Sand (Black Pit)	100 cu ft
141	Iron Bars (M.S. BAR) 1/2 " 40 Grade	1 Ton
142	Painter Wage Rate	Per Day
143	Mason Wage Rate	Per Day
144	Unskilled Labor Wage Rate	Per Day
145	Plumber Wage Rate	Per Day
146	Electrician Charges	Per Point
147	Water Charges Per House	Monthly
148	Charges for Refuse/Waste Collection	Monthly
149	Electricity Charges upto 50 Units	Per Unit
150	Electricity Charges 51-100 Units	Per Unit
151	Electricity Charges 101-300 Units	Per Unit
152	Electricity Charges 301-700 Units	Per Unit
153	Electricity Charges Above 700 Units	Per Unit
154	Electricity Charges Combined	Per Unit
155	Gas Charges upto 3.3719 MMBTU	MMBTU
156	Gas Charges 3.3719 - 6.7438 MMBTU	MMBTU
157	Gas Charges 6.7438 - 10.1157 MMBTU	MMBTU
158	Gas Charges 10.1157 - 13.4876 MMBTU	MMBTU
159	Gas Charges Above 13.4876 MMBTU	MMBTU
160	Gas Charges Combined	MMBTU
161	LPG 11.67 kg Cylinder	Each
162	Firewood Whole	40 kg
Furnishing and household equipment maintenance		
163	Chair Sheesham Wood with Arm	Each
164	Chair Plastic (Chairman) (Average Quality)	Each
165	Central Table Set with Glass Top	Set
166	Sofa Set Five Seater	Set
167	Dining Table wit Glass Top and Six Chairs (Average Quality)	Set
168	Cot Iron (Charpai)	Each
169	Steel Almirah	Each
170	Mattress Foam Single Bed Molty/Diamond (4" Thick)	Each
171	Tube Light Philips 40 Watt	Each
172	Energy Saver Philips 14 Watt	Each
173	Plain Carpet	1 sq ft
174	Readymade Quilt (3 kg)	Each
175	Blanket Single (SN)	Each
176	Bed Sheet Single (Superior Quality)	Each
177	Bed Sheet Double with two Pillow Covers (Superior Quality)	Set
178	Towel Medium Size (3' x 2')	Each
179	Ceiling Fan 56" Pak/Younas/Millat	Each
180	Refrigerator Dawlance/Pel 10 Cubic feet Double Door	Each
181	Split Air Conditioner Orient/LG/Dawlance 1.5 Ton	Each
182	Air Cooler Super Asia ECM-4000/JC-1000	Each
183	Washing Machine with Spinner (Super Asia or Similar Brand) (SN)	Each
184	Sewing Machine (SN) Without Cover	Each
185	Geyser Super Asia Large Size 30 Gallons (Gas)	Each
186	Electric Iron Dry (National/West Point)	Each
187	Frying Pan Non-stick Medium Size Sonex	Each

Annexure D: CPI (Urban) Items detail

188	Water Set (OMROC) 6 Glasses + jug	Set
189	Tea Set Pakistani (China-Ware) Set of 21 Pieces	Set
190	Dinner Set Plastic 72 Pieces Super Quality	Set
191	Bucket (Balti) Plastic Medium Size	Each
192	Lota Plastic Medium Size (Average Quality)	Each
193	Water Pump Golden Monoblock/Donkey 0.5 H.P	Each
194	Sufi Washing Soap 250 gm Cake	Each
195	Surf Excel 500 gm Polybag	Each
196	Express Washing Powder 1 KG Polybag	Each
197	Cleanser Powder Vim 900 gm Polybag	Each
198	Finis 400 ml Bottle	Each
199	Phenyl Tyfon/Finis 2.75 Litre Bottle	Each
200	Harpic 500 ml Bottle	Each
201	Boot Polish Cherry/KIWI 42 ml	Each
202	Robin Blue Liquid 75 ml Bottle	Each
203	Match Box	Each
204	Household Servant Female Part Time	Per Month
Health		
205	Septran Tablets	10 No.
206	Panadol Tablets Plain	10 No.
207	Flagyl Tablets 400 mg	10 No.
208	Ventolin Tablets 2 mg	10 No.
209	Daonil Tablets 5 mg	10 No.
210	Entox Tablets	10 No.
211	CAC 1000 Tablets Sandoz Bottle	Each
212	Amoxil Capsule 250 mg	10 No.
213	Lederplex Syrup Bottle	Each
214	Phenergan Syrup 120 ml Bottle	Each
215	Calpol Syrup 100 ml Bottle	Each
216	Hydryllin Syrup 120 ml Bottle	Each
217	Inderal Tablets 10 mg	10 No.
218	Betnovate-N Ointment 10 gm Tube	Each
219	Johar Joshanda Instant (Sachet) Packet	Each
220	Glaxose-D 400 gm Packet	Each
221	Dettol Medium Bottle	Each
222	Electronic BP Checking Apparatus	Each
223	Glucometer	Each
224	Doctor (MBBS) Clinic Fee	Per Patient
225	Gynecologist Fee Per Visit	Per Patient
226	Dental Surgeon Fee Per Visit	Per Patient
227	Dental Extraction Fee	Per Tooth
228	Urine Test (DR) Charges	Per Test
229	Blood Test (CP) Charges	Per Test
230	Sugar Test (Random/Fasting) Charges of Both	Per Test
231	ECG Charges	Per Test
232	X-RAY (Chest) Charges	Per X-ray
233	Ultrasound Abdominal	Per Test
234	Physiotherapist Fee Per Visit	Per Patient

Annexure D: CPI (Urban) Items detail

235	Cost of Surgery (C-Section)	Per Case
Transport		
236	Car Suzuki 800 cc Without AC	Each
237	Car Suzuki 1000 cc	Each
238	Car Toyota 1300 cc Xli	Each
239	Car Honda Civic Turbo 1.5 VTEC	Each
240	Motorcycle Honda CD 70	Each
241	Motorcycle United/Unique 70 cc	Each
242	Bicycle	Each
243	Tire Motorcycle CD 70 (Back Wheel)	Each
244	Tire Car Mehran Tubeless (General)	Each
245	Petrol Super	Per Litre
246	Hi-Speed Diesel	Per Litre
247	CNG	1 kg/1 Ltr
248	Mobil Oil (Havoline 20w-50)	4 Litres
249	Motorcycle Service Charges	Each
250	Car Service Charges	Each
251	Tire Car Puncture Charges	Each
252	Car Tax 800 cc to 1500 cc	Per Year
253	Train Fare Economy per Person	Per km
254	Train Fare AC Sleeper per Person	Per km
255	Train Fare AC Lower per Person	Per km
256	Train Fare Business Class per Person	Per km
257	Auto Rickshaw Fare	Minimum
258	Taxi Four Seater Fare	Minimum
259	Bus Fare Minimum Within City	Per Ticket
260	Bus Fare Maximum Within City	Per Ticket
261	Bus Fare Outside City (non AC)	Per km
262	Bus Fare Outside City (AC)	Per km
263	Mini Bus Fare Minimum Within City	Per Ticket
264	Mini Bus Fare Maximum Within City	Per Ticket
265	Suzuki Fare Minimum Within City	Per Ticket
266	Suzuki Fare Maximum Within City	Per Ticket
267	Air Fare Economy Class Per Kilometer (National Average)	Per Person
Communication		
268	Courier Charges Minimum Within Zone Outside City (TCS)	Per Envelope
269	Mobile Set with Rear Camera and Without Touch Screen	Each
270	Telephone Call Charges	Per Minute
271	Internet Charges (DSL) 1 MB (Unlimited)	Per Month
272	Mobile Call Charges	Per Unit
Recreation and culture		
273	LED Sony/Samsung 32" Colored	Each
274	Personal Computer with LED Monitor (17") DELL/HP/ACER CORE i5	Each
275	Laptop DELL/HP/ACER Core i5, Display (14'-15')	Each
276	Recreational Park Charges (Minimum Playland Ticket)	Per Person
277	Cable Charges	Per Month
278	English Book Class VI	Each
279	English Book Class IX and X	Each

Annexure D: CPI (Urban) Items detail

280	English Book Class XI Complete Set	Each
281	English Book BA/B.SC	Each
282	Urdu Book Class V (Text Book Board)	Each
283	Urdu Book Class IX and X (Text Book Board)	Each
284	Urdu Book Class XI/Inter	Each
285	Urdu Book BA/B.SC	Each
286	Mathematics Book Class V (Text Book Board)	Each
287	Mathematics Book Class IX and X (Text Book Board)	Each
288	Mathematics Book Class XI (Text Book Board)	Each
289	Newspaper Daily Dawn	Each
290	Newspaper Daily Jang	Each
291	Akhbar-e-Jehan Weekly	Each
292	MAG THE WEEKLY (Magazine)	Each
293	Exercise Book (with Lines) 80 to 100 Pages	Each
294	Lead Pencil Goldfish	Each
295	Pen Ink Dollar 57 ml Bottle	Each
296	Photostat Paper 70 gm	Packet
297	Ballpoint Pen Local	Each
Education		
298	Private School Fee English Medium Average Standard (Class I)	Per Month
299	Private School Fee English Medium Average Standard (Class V)	Per Month
300	Private School Fee English Medium Average Standard (Class VI)	Per Month
301	Private School Fee English Medium Average Standard (Class X)	Per Month
302	Government College Fee First Year	Per Month
303	Private College Fee First Year	Per Month
304	Coaching Fee for Class IX/X Science Group	Per Subject
305	Coaching Fee for Class XI/XII Science Group	Per Subject
306	Coaching Fee for Class XI/XII Commerce Group	Per Subject
307	Government University Fee M.S.c / M.A.	Per Month
308	Tuition Fee Private University M.Sc./M.A	Per Month
309	Government Medical College/University Tuition Fee for MBBS (1st year)	Per Month
310	Private Medical College/University Tuition Fee for MBBS (1st year)	Per Month
311	Government Engineering University Tuition Fee for BE (1st year)	Per Month
312	Private Engineering University Tuition Fee for BE (1st year)	Per Month
313	Vocational Training Basic Computer Short Course Fee (3 Months)	Per Course
Restaurants and hotels		
314	Bread Tandoori Standard Size	Each
315	Cooked Chicken at Average Hotel	Per Plate
316	Cooked Beef at Average Hotel	Per Plate
317	Cooked Daal at Average Hotel	Per Plate
318	Chicken Biryani Full/Double	Per Plate
319	Tea Prepared Ordinary	Per Cup
320	Pizza Chicken Medium Size (Average Quality)	Each
321	Burger with Shami Kabab (Average Quality)	Each
322	Chicken Roast (Full) (Average Quality)	Each
323	Seekh Kabab (Beef) (Average Quality)	1 Dozen
324	Marriage Hall Charges with Furniture	Per Head
325	Marriage Hall Service Charges with Food (Average Meal)	Per Head

Annexure D: CPI (Urban) Items detail

326	Government Hostel Accommodation Fee for Intermediate College per Student	Per Month
327	Private Hostel Accommodation Fee for Intermediate College per Student	Per Month
Misc. goods and services		
328	Hair Cut Charges for Men	Per Cut
329	Hair Style Charges (at Average Beauty Parlor)	Per Style
330	Shaving Charges	Per Shave
331	Electric Hair Straightener (PHILIPS)	Each
332	Toilet Soap LUX 75 gm	Each
333	Toilet Soap LIFEBOUY 115 gm	Each
334	Tooth Paste COLGATE 75 gm	Each
335	Tooth Brush (SHIELD)	Each
336	Hair Color (KALA KOLA)	Tube
337	Hair Removing Cream (EU-Cream) 30ml Tube	Each
338	Shaving Cream (TOUCHME large/ADMIRAL)	Tube
339	Blade Treet Ordinary (10 no. Packet)	Each
340	Disposable Razor Gillette Blue II	Each
341	Shampoo Sun silk/Pantene 90 ml Bottle	Each
342	Lipstick Swiss Miss/Medora (Medium)	Each
343	Nail Polish Swiss Miss/Medora (Medium)	Each
344	Perfume Medium Size Broche/Medora	Each
345	Face Cream Ponds Medium Size (Cold)	Each
346	Talcum Powder Viceroy/Black Cat Large Size	Each
347	Hair Oil (Kala Kola hair tonic)	200 ml
348	Tissue Paper Perfumed Box 100 napkins	Each
349	Pampers (Medium Size)	Small Packet
350	Gold Tezabi 24 Carett	10 gm
351	Silver Tezabi 24 Carett	10 gm
352	Wall Clock Quartz (Average Quality)	Each
353	Artificial Jewelry (Locket Set) (Average Quality)	Each
354	Suitcase Ragzine (24"x16"x6") (Average Quality)	Each
355	Trunk Medium Size (Average Quality)	Each
356	Purse Ladies Medium Size (Average Quality)	Each

Annexure E:CPI (Rural) Items Detail

Detail of RPI Items with Base Year 2015-16		
No.	Item Description	Unit
Food and non-alcoholic Beverages		
1	Wheat	10 kg
2	Wheat Flour (Average Quality)	1 kg
3	Wheat Flour Bag	20 kg
4	Suji	1 kg
5	Vermicelli (Packet)	1 kg
6	Besan	1 kg
7	Rice Basmati 385/386	1 kg
8	Rice Basmati Broken (Average Quality)	1 kg
9	Bread plain (Medium Size)	Each
10	Rusk (Papay) (Average Quality)	1 kg
11	Biscuit Bakery (Loose, Average Quality)	250 gm
12	Samosa (Vegetable, Average Quality)	Each
13	Nimko (Loose, Average Quality)	250 gm
14	Beef with Bone (Average Quality)	1 kg
15	Mutton (Average Quality)	1 kg
16	Chicken Farm Broiler (Live)	1 kg
17	Fish Fresh	1 kg
18	Milk fresh (Un-boiled)	1 Litre
19	Curd	1 kg
20	Powdered Milk NIDO 390 gm Polybag	Each
21	Eggs Farm	Dozen
22	Mustard Oil (Average Quality)	1 kg
23	Vegetable Ghee DALDA/HABIB 2.5 kg Tin	Each
24	Vegetable Ghee DALDA/HABIB or Other superior Quality 1 kg Pouch	Each
25	Desi Ghee	1 kg
26	Cooking Oil (Pouch)	1 Litre
27	Almonds (Badam) Kaghazi with Shell (Average Quality)	1 kg
28	Groundnuts (Moong Phali) with shell	1 kg
29	Kinnu (Average Quality)	1 Dozen
30	Apple (Average Quality)	1 kg
31	Grapes (Angoor) (Average Quality)	1 kg
32	Bananas (Kela) Local	1 Dozen
33	Mango Kalmi (Average Quality)	1 kg
34	Guava (Amrood) (Average Quality)	1 kg
35	Watermelon (Turbooz)	1 kg
36	Muskmelon (Kharbuza)	1 kg
37	Pulse Masoor (Washed)	1 kg
38	Pulse Moong (Washed)	1 kg
39	Pulse Mash (Washed)	1 kg
40	Pulse Gram	1 kg
41	Gram Whole Black (Average Quality)	1 kg
42	Gram Whole Yellow (Average Quality)	1 kg
43	Beans Red/White (Lobia)	1 kg
44	Potatoes	1 kg

Annexure E:CPI (Rural) Items Detail

45	Chips (Loose)	250 gm
46	Onions	1 kg
47	Tomatoes	1 kg
48	Turnip (Shalgham)	1 kg
49	Radish (Mooli)	1 kg
50	Cauliflower (Phool Gobhi)	1 kg
51	Bottlegourd (Loki)	1 kg
52	Lady Finger (Bhindi)	1 kg
53	Peas (Matar)	1 kg
54	Spinach (Paalak)	1 kg
55	Tinda	1 kg
56	Turai	1 kg
57	Karela	1 kg
58	Chilies (Green)	250 gm
59	Carrot (Gajar)	1 kg
60	Cucumber (Kheera)	1 kg
61	Lemon	250 gm
62	Garlic (Lehsun)	1 kg
63	Brinjal	1 kg
64	Arvi	1 kg
65	Sugar Refined	1 kg
66	Gur (Average Quality)	1 kg
67	Honey MARHABA Bottle 500 gm	Each
68	Sweetmeat (Mixed Mithai)	1 kg
69	Ice Cream Walls Cup (Large Size)	Each
70	Ginger (Adrak)	500 gm
71	Custard Powder RAFHAN 300 gm Packet	Each
72	Coriander Seed Powder Loose	1 kg
73	Salt Powder Loose	1 kg
74	Chilies Powder Loose	1 kg
75	Turmeric Powder Loose	250 gm
76	Tea Lipton Yellow Label 190 gm Packet	Each
77	Cold Drink (PEPSI/COCA-COLA) 1.5 Liter Bottle	Each
78	Fruit Juice Small Packet 250 ml	Each
79	JAM-E-SHIREEN Standard Size (800 ml)	1 Bottle
Alcoholic Beverages, Tobacco		
80	Cigarettes Capstan 20'S Packet	Each
81	Cigarettes Gold Leaf 20'S Packet	Each
82	Tobacco Hukka Twisted	1 kg
83	Chewing Tobacco (Niswar)	250 gm
84	Pan Prepared (Sweet with Beetle Nuts)	Each
Clothing and footwear		
85	Shirting (Average Quality)	1 Metre
86	Georgette (Average Quality)	1 Metre
87	Linen, Ladies (Average Quality)	1 Metre
88	Long Cloth	1 Metre
89	Lawn Printed (Average Quality)	1 Metre
90	Full Pant Boy Length 24"/26"	Each
91	Shirt Boy Length 24"/26"	Each

Annexure E:CPI (Rural) Items Detail

92	School Uniform Boys (Pant & Shirt) 24"/26"	Suit
93	School Uniform Girls (Kameez & Shalwar) 24"/26"	Suit
94	Pullover Gents (Average Quality)	Each
95	Pullover Ladies (Average Quality)	Each
96	Tailoring Charges Awami Suit (Male)	Suit
97	Tailoring Charges Simple Suit (Female)	Suit
98	Underwear Medium Size (Average Quality)	Each
99	Vest "Baniyan" for Men Average Quality	Each
100	Brassier (Average Quality)	Each
101	Socks Nylon Local (Average Quality)	Pair
102	Lungi/Dhoti Cotton (Average Quality)	Each
103	Dopatta Geogette (Average Quality)	Each
104	Dopatta Cotton (Average Quality)	Each
105	Chaddar (Wash-n-Wear) (2x2.5 Meter)	Each
106	Washing Charges Shalwar Kameez	Suit
107	Footware Gents Local (Average Quality)	Pair
108	Footware Ladies Local (Average Quality)	Pair
109	Footware Children Local (Average Quality)	Pair
110	Shoe Repair Full Sole	Pair
111	Shoe Polish Charges	Pair
Housing, water, Elec., Gas and other fuels		
112	House Rent Combined	Quarterly
113	Cement (Local) 50 kg Bag	Each
114	Bricks New 1st Class	1000 No.
115	Bajri	100 cu ft
116	Sand (Black Pit)	100 cu ft
117	Painter Wage Rate	Per Day
118	Mason Wage Rate	Per Day
119	Unskilled Labor Wage Rate	Per Day
120	Plumber Wage Rate	Per Day
121	Electrician Charges	Per Point
122	Carpenter Wage Rate	Per Day
123	Water Charges Per House	Monthly
124	Charges for Refuse/Waste Collection	Monthly
125	Electricity Charges upto 50 Units	Per Unit
126	Electricity Charges 51-100 Units	Per Unit
127	Electricity Charges 101-300 Units	Per Unit
128	Electricity Charges 301-1000 Units	Per Unit
129	Electricity Charges Above 1000 Units	Per Unit
130	Electricity Charges Combined	Per Unit
131	LPG 11.67 kg Cylinder	Each
132	Kerosene Oil	1 Litre
133	Firewood Whole	40 kg
134	Coal	1 kg
Furnishing and household equipment maintenance		
135	Cot Iron (Charpai)	Each
136	Tube Light Philips 40 Watt	Each
137	Energy Saver Philips 14 Watt	Each
138	Readymade Quilt (3 kg)	Each

Annexure E:CPI (Rural) Items Detail

139	Blanket Single (SN)	Each
140	Towel Medium Size (2' x 3')	Each
141	Ceiling Fan 56" Pak/Younas/Millat	Each
142	Refrigerator Dawlance/Pel 10 Cubic feet Double Door	Each
143	Washing Machine with Spinner (Super Asia or Similar Brand) (SN)	Each
144	Sewing Machine (SN) Without Cover	Each
145	Water Set (OMROC) 6 Glass	Set
146	Tea Set Pakistani (China-Ware) Set of 21 Pieces	Set
147	Dinner Set Plastic 72 Pieces Super Quality	Set
148	Bucket (Balti) Plastic Medium Size	Each
149	Lota Plastic Medium Size (Average Quality)	Each
150	Aluminium Cooking Pan (Degchi)	Each
151	Plates Steel Medium Size (Average Quality)	Each
152	Water Cooler 9/10 Litre Plastic Super Quality	1 No.
153	Water Pump Golden Monoblock/Donkey 0.5 H.P	Each
154	Express Washing Powder 1 KG Polybag	Each
155	Cleanser Powder Vim 900 gm Polybag	Each
156	Finis 400 ml Bottle	Each
157	Boot Polish Cherry/KIWI 42 ml	Each
158	Robin Blue Liquid 75 ml Bottle	Each
159	Match Box	Each
160	Washing Soap 250 gm Cake (Specify Name)	Each
Health		
161	Panadol Tablets Plain	10 No.
162	Daonil Tablets 5 mg	10 No.
163	CAC 1000 Tablets Sandoz Bottle	Each
164	Amoxil Capsule 250 mg	10 No.
165	Hydryllin Syrup 120 ml Bottle	Each
166	Inderal Tablets 10 mg	10 No.
167	Johar Joshanda Instant (Sachet) Packet	Each
168	Dettol Medium Bottle	Each
169	Doctor (MBBS) Clinic Fee	Per Patient
170	Dental Surgeon Fee Per Visit	Per Patient
171	Blood Test (CP) Charges	Per Test
172	X-RAY (Chest) Charges	Per X-ray
173	Physiotherapist Fee Per Visit	Per Patient
174	Cost of Surgery (C-Section)	Per Case
Transport		
175	Car Suzuki 800 cc Without AC	Each
176	Motorcycle Honda CD 70	Each
177	Bicycle	Each
178	Tire Motorcycle CD 70 (Back Wheel)	Each
179	Tire Car Mehran Tubeless (General)	Each
180	Tire Cycle	Each
181	Petrol Super	Per Litre
182	Hi-Speed Diesel	Per Litre
183	CNG	1 kg/1 Ltr
184	Mobil Oil (Havoline 20w-50)	4 Litres

Annexure E:CPI (Rural) Items Detail

185	Motorcycle Service Charges	Each
186	Car Tax 800 cc to 1500 cc	Per Year
187	Train Fare Economy per Person	Per km
188	Bus Fare Outside City (non AC)	Per km
189	Chingchi Rickshaw Charges, Minimum	Per Person
190	Air Fare Economy Class Per Kilometer	Per Person
Communication		
191	Postal Registration Charges	Per Envelope
192	Mobile Set with Rear Camera and Without Touch Screen	Each
193	Telephone Call Charges	Per Minute
194	Internet Charges (DSL) 1 MB (Unlimited)	Per Month
195	Mobile Call Charges	Per Unit
Recreation and culture		
196	LED Sony/Samsung 32" Colored	Each
197	Personal Computer with LED Monitor (17") DELL/HP/ACER CORE I5	Each
198	Pets Feed	10 kg
199	Cable Charges	Per Month
200	English Books Class VI	Each
201	English Books Class IX and X	Each
202	English Books Class XI Complete Set	Each
203	Urdu Books Class V (Text Book Board)	Each
204	Urdu Books Class IX and X (Text Book Board)	Each
205	Newspaper Daily Jang	Each
206	Exercise Book (with Lines) 80 to 100 Pages	Each
207	Lead Pencil Goldfish	Each
208	Ballpoint Pen Local	Each
Education		
209	Private School Fee English Medium Average Standard (Class I)	Per Month
210	Private School Fee English Medium Average Standard (Class V)	Per Month
211	Private School Fee English Medium Average Standard (Class VI)	Per Month
212	Coaching Fee for Class IX/X Science Group	Per Subject
213	Vocational Training Basic Computer Short Course Fee (3 Months)	Per Course
Restaurants and hotels		
214	Bread Tandoori Standard Size	Each
215	Cooked Chicken at Average Hotel	Per Plate
216	Cooked Beef at Average Hotel	Per Plate
217	Cooked Daal at Average Hotel	Per Plate
218	Chicken Biryani Full/Double	Per Plate
219	Tea Prepared Ordinary	Per Cup
220	Pizza Chicken Medium Size (Average Quality)	Each
221	Burger with Shami Kabab (Average Quality)	Each
222	Chicken Roast (Full) (Average Quality)	Each
223	Seekh Kabab (Beef) (Average Quality)	1 Dozen
224	Marriage Hall Charges with Furniture	Per Head
225	Marriage Hall Service Charges with Food (Average Meal)	Per Head
226	Government Hostel Accommodation Fee for Intermediate College per Student	Per Month
227	Private Hostel Accommodation Fee for Intermediate College per Student	Per Month

Annexure E:CPI (Rural) Items Detail

Misc. goods and services		
228	Hair Cut Charges for Men	Per Cut
229	Shaving Charges	Per Shave
230	Toilet Soap LUX 75 gm	Each
231	Tooth Paste COLGATE 75 gm	Each
232	Tooth Brush (SHIELD)	Each
233	Hair Color (KALA KOLA)	Tube
234	Hair Removing Cream (EU-Cream) 30ml Tube	Each
235	Shaving Cream (TOUCHME Large/ADMIRAL)	Tube
236	Blade Treet Ordinary (10 no. Packet)	Each
237	Disposable Razor Gillette Blue II	Each
238	Shampoo Sun Silk/Pantene 90 ml Bottle	Each
239	Talcum Powder Viceroy/Black Cat	Each
240	Gold Tezabi 24 Carett	10 gm
241	Artificial Jewelry (Locket Set) (Average Quality)	Each
242	Suitcase Ragzine (24"x16"x6") (Average Quality)	Each
243	Trunk Medium Size (Average Quality)	Each
244	Purse Ladies Medium Size (Average Quality)	Each

Annexure F: General Inflation Trends (2015-16=100)

Period	General Inflation Trends (percent) Base=1516															SPI**		WPI	
	CPI																		
	General						Food				Non-food								
	National		Urban		Rural		Urban		Rural		Urban		Rural						
YoY	MoM	YoY	MoM	YoY	MoM	YoY	MoM	YoY	MoM	YoY	MoM	YoY	MoM	YoY	MoM	YoY	MoM		
Jul-16																			
Aug-16		-0.4		-0.5		-0.2		-1.6		-0.8		0.2		0.3		-0.3		0.1	
Sep-16		0.4		0.3		0.6		0.2		0.9		0.4		0.3		0.2		-0.4	
Oct-16		0.9		0.8		1.1		1.0		1.9		0.6		0.5		0.5		-0.1	
Nov-16		0.5		0.5		0.5		0.8		0.6		0.3		0.4		0.7		0.5	
Dec-16		-0.6		-0.6		-0.6		-1.9		-1.7		0.2		0.5		-1.3		0.2	
Jan-17		0.4		0.8		-0.1		-0.2		-1.3		1.4		0.8		-1.0		0.8	
Feb-17		0.5		0.5		0.5		0.7		0.5		0.4		0.4		0.4		0.8	
Mar-17		1.1		1.0		1.1		2.7		2.4		0.0		0.1		2.8		0.4	
Apr-17		0.7		1.0		0.4		0.9		0.2		1.0		0.5		-0.7		0.4	
May-17		-0.5		-0.3		-0.8		-1.0		-1.8		0.1		0.0		-0.4		-0.2	
Jun-17		0.2		0.2		0.1		0.0		0.2		0.3		0.1		0.0		-0.1	
Jul-17	3.9	0.6	4.4	0.6	3.1	0.5	2.5	0.9	1.5	0.6	5.5	0.4	4.4	0.5	0.9	0.0	1.9	-0.7	
Aug-17	4.4	0.1	5.1	0.2	3.4	0.1	4.4	0.3	2.3	-0.1	5.4	0.1	4.3	0.2	2.2	1.1	2.0	0.2	
Sep-17	4.7	0.7	5.2	0.4	3.9	1.1	4.8	0.6	3.2	1.8	5.3	0.3	4.6	0.5	4.1	2.1	2.7	0.3	
Oct-17	4.8	1.1	5.3	0.9	4.2	1.4	5.0	1.1	3.2	2.0	5.4	0.7	5.0	0.9	4.6	0.9	3.7	0.9	
Nov-17	5.0	0.7	5.4	0.6	4.4	0.7	5.3	1.1	3.5	0.9	5.5	0.3	5.2	0.6	4.1	0.2	4.2	1.0	
Dec-17	5.6	0.0	6.1	0.0	4.9	-0.1	6.7	-0.7	4.4	-0.9	5.8	0.5	5.3	0.5	4.5	-0.9	4.5	0.5	
Jan-18	5.2	0.1	5.4	0.2	4.9	-0.1	5.1	-1.7	4.3	-1.4	5.6	1.3	5.5	1.0	4.0	-1.5	6.4	2.6	
Feb-18	4.5	-0.3	4.8	-0.1	4.0	-0.4	3.4	-0.9	2.2	-1.5	5.5	0.3	5.5	0.4	2.3	-1.2	5.9	0.4	
Mar-18	3.6	0.2	4.0	0.3	3.0	0.1	0.5	-0.3	-0.7	-0.6	6.1	0.6	6.1	0.7	-1.3	-0.9	5.4	-0.1	
Apr-18	4.0	1.1	4.4	1.4	3.3	0.6	1.3	1.7	-0.3	0.6	6.2	1.2	6.3	0.7	0.2	0.9	6.3	1.3	
May-18	5.0	0.5	5.3	0.5	4.5	0.3	3.1	0.7	1.7	0.1	6.6	0.4	6.8	0.5	1.3	0.7	8.6	2.0	
Jun-18	5.7	0.8	5.8	0.7	5.4	1.0	4.1	1.1	2.9	1.4	6.8	0.5	7.5	0.7	2.8	1.5	11.4	2.5	
Jul-18	6.7	1.5	6.7	1.4	6.6	1.7	3.9	0.7	3.9	1.5	8.3	1.8	8.9	1.8	4.2	1.4	16.3	3.7	
Aug-18	6.2	-0.3	6.2	-0.3	6.2	-0.3	3.0	-0.5	3.7	-0.2	8.0	-0.2	8.3	-0.4	2.9	-0.2	16.7	0.5	
Sep-18	5.4	0.0	5.6	-0.1	5.1	0.0	1.5	-0.8	1.5	-0.3	8.0	0.3	8.1	0.3	0.4	-0.4	14.6	-1.5	
Oct-18	6.5	2.1	7.0	2.2	5.7	2.0	3.0	2.6	2.5	3.0	9.4	2.0	8.4	1.1	1.7	2.3	18.6	4.4	
Nov-18	5.7	-0.1	6.3	-0.1	4.7	-0.2	1.7	-0.2	0.9	-0.7	9.0	0.0	8.0	0.3	0.8	-0.7	18.6	1.0	
Dec-18	5.4	-0.3	5.9	-0.3	4.6	-0.3	0.6	-1.8	0.5	-1.4	9.0	0.5	8.1	0.6	1.5	-0.3	16.5	-1.3	
Jan-19	5.6	0.3	6.2	0.4	4.6	0.0	2.6	0.3	1.8	0.0	8.2	0.5	7.0	0.0	3.4	0.4	12.6	-0.8	
Feb-19	6.8	0.9	7.2	0.9	6.0	0.9	5.9	2.3	5.2	1.7	8.0	0.1	6.7	0.2	7.2	2.4	13.9	1.6	
Mar-19	8.6	2.0	8.9	1.9	8.2	2.2	8.8	2.5	9.3	3.3	9.0	1.5	7.3	1.3	10.5	2.1	16.6	2.2	
Apr-19	8.3	0.7	8.4	0.8	8.1	0.6	8.3	1.3	9.3	0.6	8.4	0.6	7.2	0.6	10.0	0.5	17.1	1.8	
May-19	8.4	0.6	8.5	0.7	8.3	0.5	9.0	1.3	9.7	0.6	8.3	0.3	7.1	0.4	9.9	0.6	16.5	1.5	
Jun-19	8.0	0.5	8.1	0.3	7.9	0.7	7.5	-0.3	9.1	0.7	8.4	0.7	7.0	0.7	9.3	0.9	14.0	0.2	
Jul-19	8.4	1.8	8.7	2.0	7.9	1.6	7.9	1.0	9.3	1.7	9.2	2.5	6.7	1.5	8.9	1.0	13.3	3.1	
Aug-19	10.5	1.6	10.6	1.5	10.3	1.9	11.9	3.1	12.6	2.9	9.9	0.5	8.4	1.1	12.1	2.7	14.1	1.2	

**SPI for Quintile 1. Digits 0.0* are due to rounding off