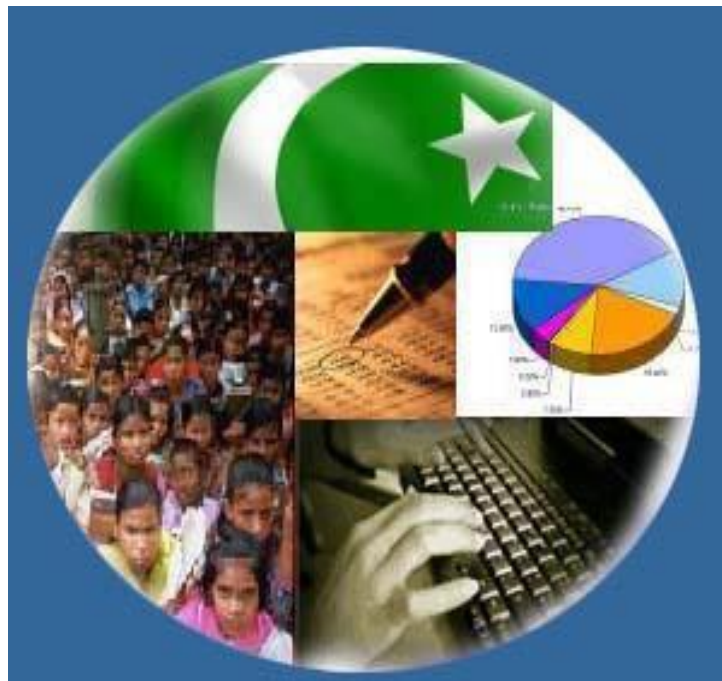




Monthly Review on Price Indices



April, 2020
(Base Year 2015-16)

Government of Pakistan
Ministry of Planning, Development & Special Initiatives
Pakistan Bureau of Statistics
Islamabad

Inflation in Brief

1. **CPI inflation General**, increased by 8.5% on year-on-year basis in April 2020 as compared to an increase of 10.2% in the previous month and 8.3% in April 2019. On month-on-month basis, it decreased by 0.8% in April 2020 as compared to an increase of 0.04% in the previous month and an increase of 0.7% in April 2019.
2. **CPI inflation Urban**, increased by 7.7% on year-on-year basis in April 2020 as compared to an increase of 9.3% in the previous month and 8.4% in April 2019. On month-on-month basis, it decreased by 0.7% in April 2020 as compared to an increase of 0.1% in the previous month and an increase of 0.8% in April 2019.
3. **CPI inflation Rural**, increased by 9.8% on year-on-year basis in April 2020 as compared to an increase of 11.7% in the previous month and 8.1% in April 2019. On month-on-month basis, it decreased by 1.1% in April 2020 as compared to a decrease of 0.1% in the previous month and an increase of 0.6% in April 2019.
4. **SPI inflation** on YoY increased by 9.0% in April 2020 as compared to an increase of 11.8% a month earlier and an increase of 10.0% in April 2019. On MoM basis, it decreased by 2.0% in April 2020 as compared to a decrease of 0.3% a month earlier and an increase of 0.5% in April 2019.
5. **WPI inflation** on YoY basis increased by 4.9% in April 2020 as compared to an increase of 9.2% a month earlier and an increase of 17.2% in April 2019. WPI inflation on MoM basis decreased by 2.0% in April 2020 as compared to a decrease of 0.9% a month earlier and an increase of 2.0% in corresponding month of last year i.e. April 2019.
6. Figures 1.a and 1.b show graphically the data of Table 1. Table 1.1 shows "Period Average" and "YoY" percent changes in indices of three years.

Table 1.a General Inflation (%) (Base 2015-16)																		
PERIOD	CPI														SPI**		WPI	
	General						Food				Non-Food							
	National		Urban		Rural		Urban		Rural		Urban		Rural		YoY	MoM	YoY	MoM
	YoY	MoM	YoY	MoM	YoY	MoM	YoY	MoM	YoY	MoM	YoY	MoM	YoY	MoM				
Apr-19	8.3	0.7	8.4	0.8	8.1	0.6	8.3	1.3	9.3	0.6	8.4	0.6	7.2	0.6	10.0	0.5	17.2	2.0
May-19	8.4	0.6	8.5	0.7	8.3	0.5	9.0	1.3	9.7	0.6	8.3	0.3	7.1	0.4	9.9	0.6	16.5	1.5
Jun-19	8.0	0.5	8.1	0.3	7.9	0.7	7.5	-0.3	9.1	0.7	8.4	0.7	7.0	0.7	9.3	0.9	14.0	0.2
Jul-19	8.4	1.8	8.7	2.0	7.9	1.6	7.9	1.0	9.3	1.7	9.2	2.5	6.7	1.5	8.9	1.0	13.3	3.1
Aug-19	10.5	1.6	10.6	1.5	10.3	1.9	11.9	3.1	12.6	2.9	9.9	0.5	8.4	1.1	12.1	2.7	14.1	1.2
Sep-19	11.4	0.8	11.6	0.7	11.1	0.8	15.0	2.0	15.0	1.8	9.7	0.0	8.0	0.0	14.7	1.9	15.9	0.1
Oct-19	11.0	1.8	10.9	1.6	11.3	2.2	13.7	1.4	14.6	2.6	9.3	1.7	8.7	1.8	15.1	2.7	13.3	2.0
Nov-19	12.7	1.3	12.1	1.0	13.6	1.9	16.6	2.4	19.3	3.4	9.6	0.2	9.0	0.6	20.2	3.7	11.2	-0.8
Dec-19	12.6	-0.3	12.0	-0.4	13.6	-0.3	16.7	-1.7	19.7	-1.1	9.5	0.4	8.8	0.4	18.1	-2.0	12.4	-0.3
Jan-20	14.6	2.0	13.4	1.7	16.3	2.4	19.5	2.7	23.8	3.4	10.2	1.1	10.5	1.5	18.3	0.5	15.4	1.8
Feb-20	12.4	-1.0	11.2	-1.1	14.2	-1.0	15.2	-1.4	19.7	-1.6	9.1	-0.9	9.8	-0.4	14.5	-0.8	12.6	-0.8
Mar-20	10.2	0.04	9.3	0.1	11.7	-0.1	13.0	0.6	15.5	-0.3	7.3	-0.1	8.5	0.1	11.8	-0.3	9.2	-0.9
Apr-20	8.5	-0.8	7.7	-0.7	9.8	-1.1	10.4	-1.0	12.9	-1.7	6.2	-0.5	7.4	-0.5	9.3	-1.8	4.9	-2.0

** SPI for quintile 1. Digits 0.0* are due to rounding off.

7. **Core inflation** measured by **non-food non-energy Urban CPI** (Core NFNE) increased by 6.4% on (YoY) basis in April 2020 as compared to an increase of 7.4% in the previous month and 7.0% in April 2019. On (MoM) basis, it increased by 0.2% in April 2020 as compared to increase of 0.3% in previous month, and an increase of 1.1% in corresponding month of last year i.e. April 2019.
8. **Core inflation** measured by **non-food non-energy Rural CPI** (Core NFNE) increased by 8.5% on (YoY) basis in April 2020 as compared to an increase of 9.4% in the previous month and 6.8% in April 2019. On (MoM) basis, it increased by 0.3% in April 2020 as compared to an increase of 0.6% in previous month, and an increase of 1.2% in corresponding month of last year i.e. April 2019.
9. **Core inflation**, measured by 20% weighted trimmed mean **Urban CPI** (Core Trimmed) increased by 6.7% on (YoY) basis in April 2020 as compared to 8.7% in the previous month and by 7.4% in April 2019. On (MoM) basis, it decreased by 0.2% in April 2020 as compared to an increase of 0.3% in the previous month and an increase of 1.1% in corresponding month of last year i.e. April 2019.
10. **Core inflation**, measured by 20% weighted trimmed mean **Rural CPI** (Core Trimmed) increased by 9.3% on (YoY) basis in April 2020 as compared to 11.4% in the previous month and by 7.3% in April 2019. On (MoM) basis, it decreased by 0.6% in April 2020 as compared to an increase of 0.1% in the previous month and an increase of 0.8% in corresponding month of last year i.e. April 2019.

Table 1.b Core Inflation (%) (Base 2015-16)

Period	NFNE				Trimmed			
	Urban		Rural		Urban		Rural	
	YoY	MoM	YoY	MoM	YoY	MoM	YoY	MoM
Apr-19	7.0	1.1	6.8	1.2	7.4	1.1	7.3	0.8
May-19	7.2	0.5	6.8	0.4	7.3	0.5	7.2	0.5
Jun-19	7.3	0.2	6.7	0.3	7.3	0.4	7.2	0.7
Jul-19	8.2	1.8	7.8	2.0	7.8	1.4	7.4	1.6
Aug-19	8.5	0.4	8.8	1.0	8.5	0.6	8.7	1.2
Sep-19	8.4	0.4	8.8	0.3	9.3	0.6	9.6	0.6
Oct-19	7.7	0.5	8.6	0.7	8.9	0.5	9.4	0.7
Nov-19	7.5	0.3	8.4	0.5	9.5	0.4	10.7	0.7
Dec-19	7.5	0.4	8.1	0.3	9.6	0.2	10.8	0.3
Jan-20	7.9	1.1	9.0	1.0	10.3	1.2	12.7	1.9
Feb-20	8.0	0.2	9.4	0.5	9.7	0.1	12.8	0.6
Mar-20	7.4	0.3	9.4	0.6	8.7	0.3	11.4	0.1
Apr-20	6.4	0.2	8.5	0.3	6.7	-0.2	9.3	-0.6

Table 1.1 Period Average and YoY % Change

INDEX	Average July- April % changes			April over April % changes		
	2019-2020	2018-2019	2017-2018	2020	2019	2018
CPI (National)	11.22	6.51	4.56	8.53	8.27	3.96
CPI(Urban)	10.73	6.85	4.99	7.68	8.35	4.42
CPI(Rural)	11.98	5.98	3.90	9.83	8.13	3.27
SPI	14.26	4.22	2.56	9.27	10.04	0.22
WPI	12.15	16.15	4.31	4.92	17.22	6.13

Figure 1: UCPI Inflation YoY, Special Indices

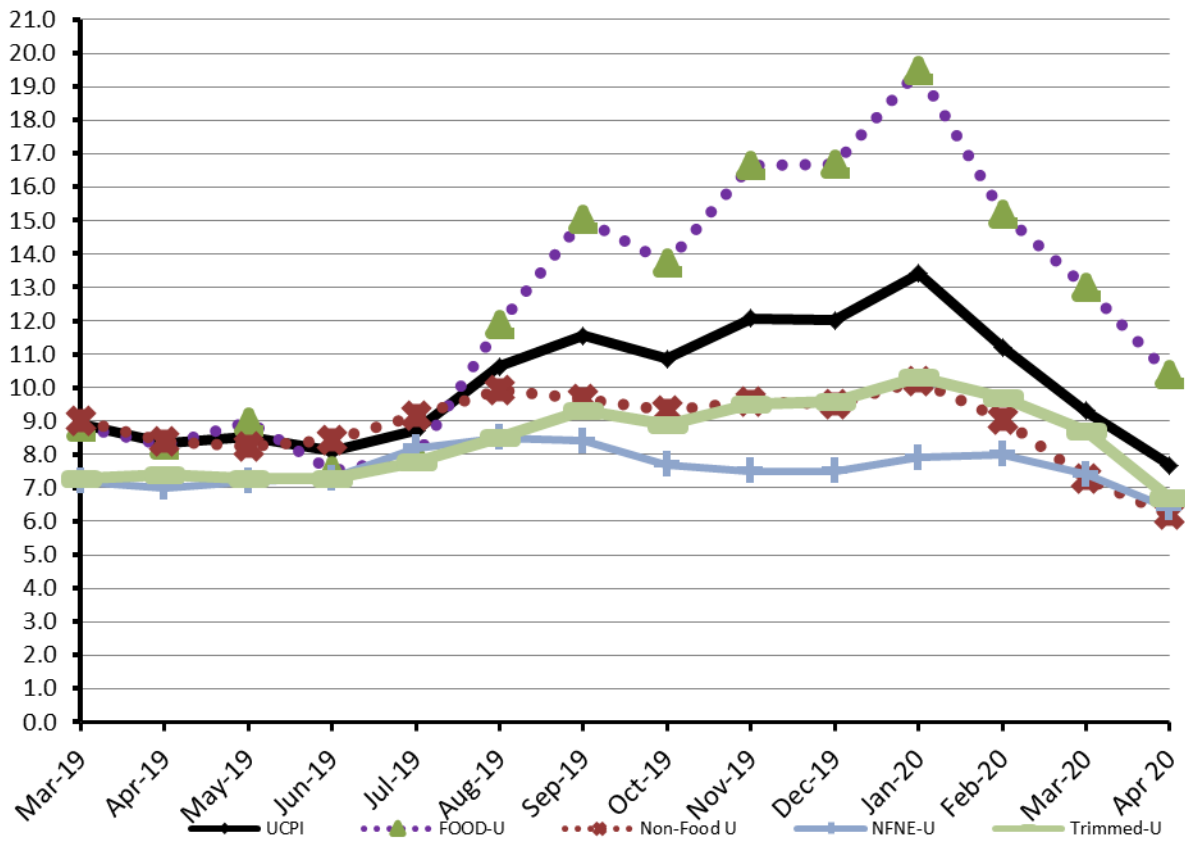


Figure 2: RCPI Inflation YoY, Special Indices

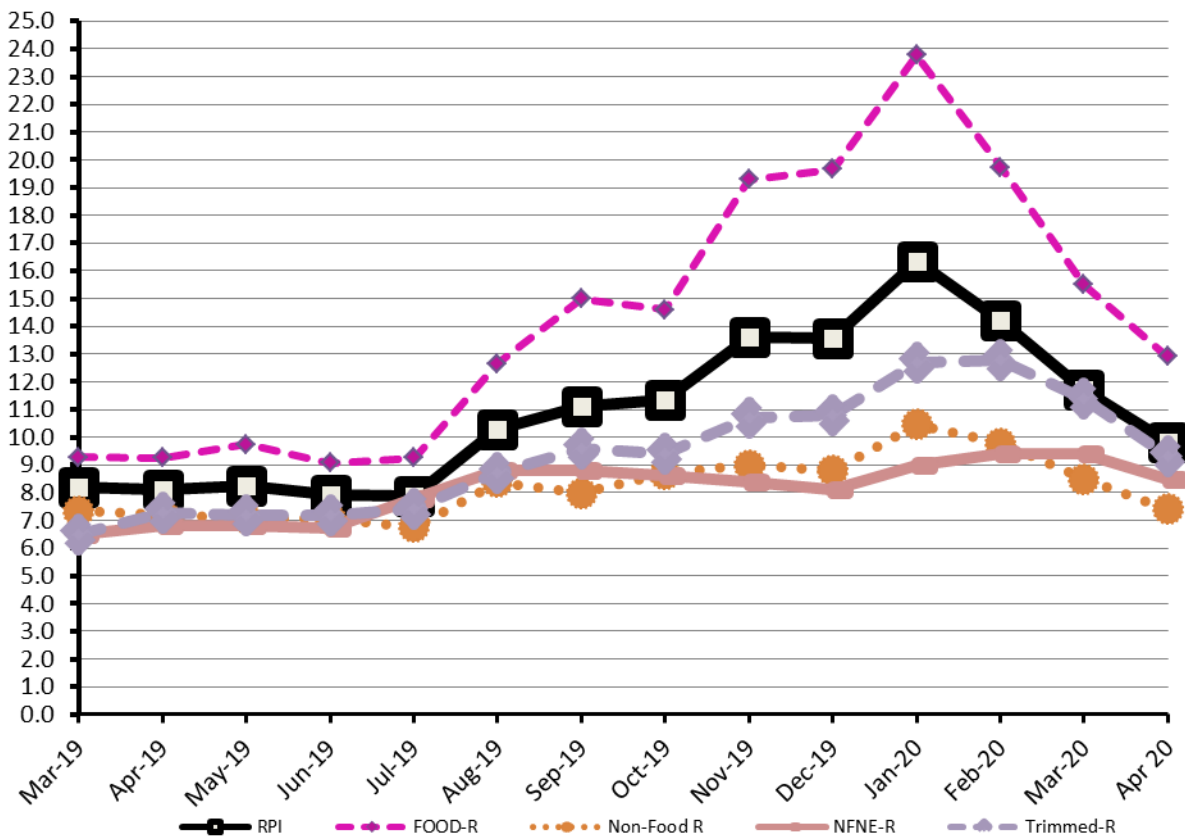


Figure 3: UCPI Inflation MoM, Special Indices

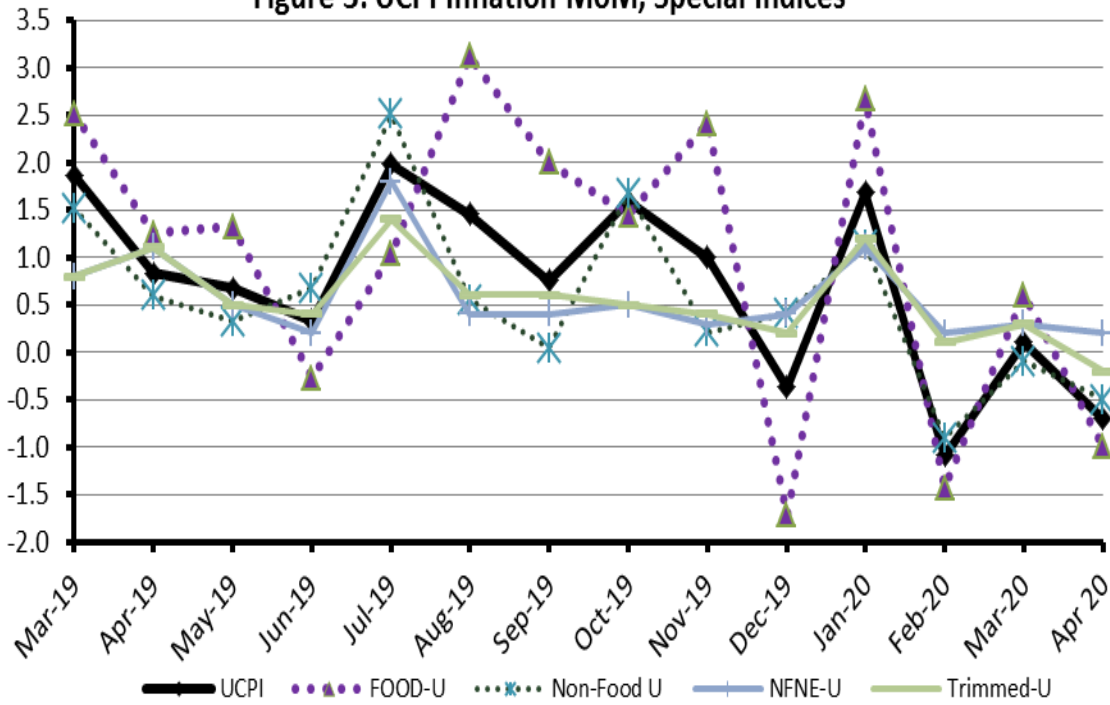


Figure 4: RPI Inflation MoM, Special Indices

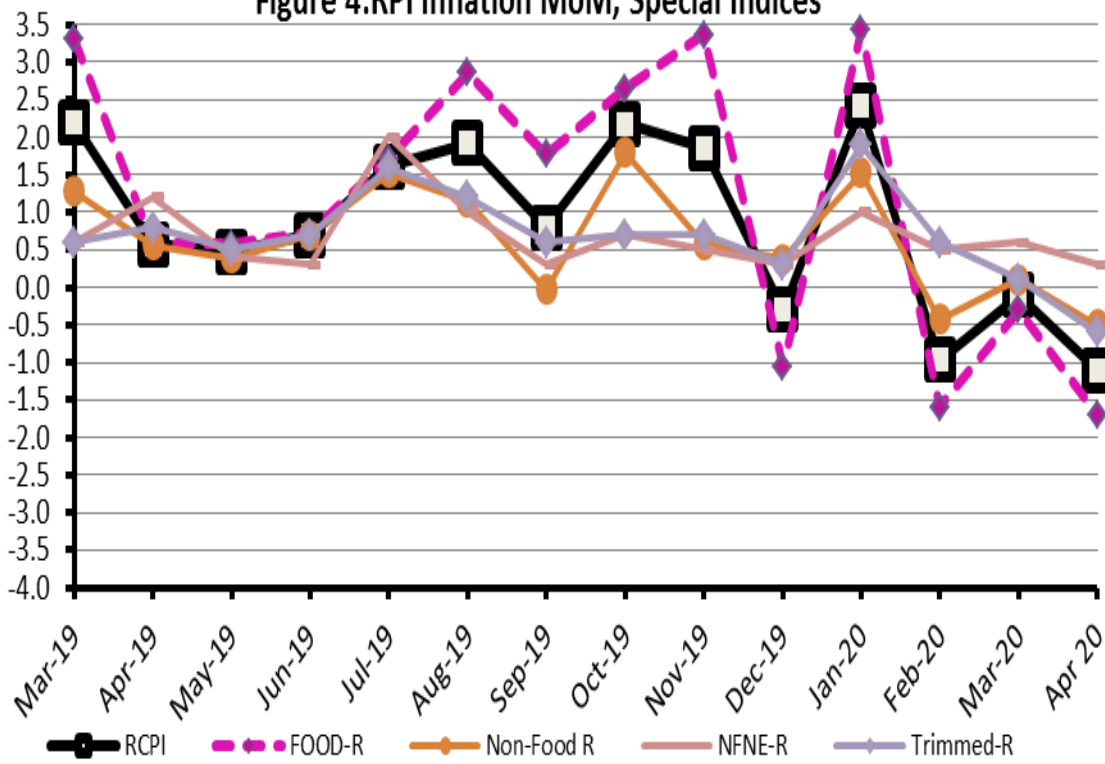


Figure 5: CPI Y.o.Y (National, Urban, Rural)

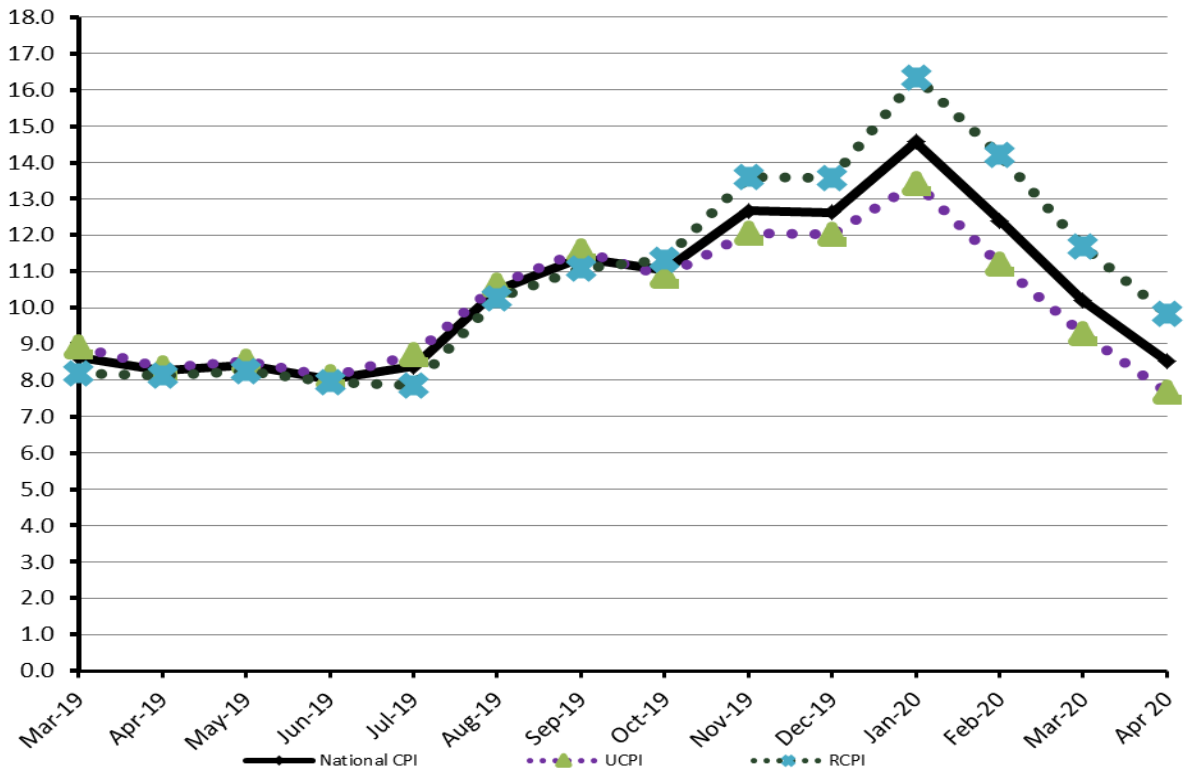
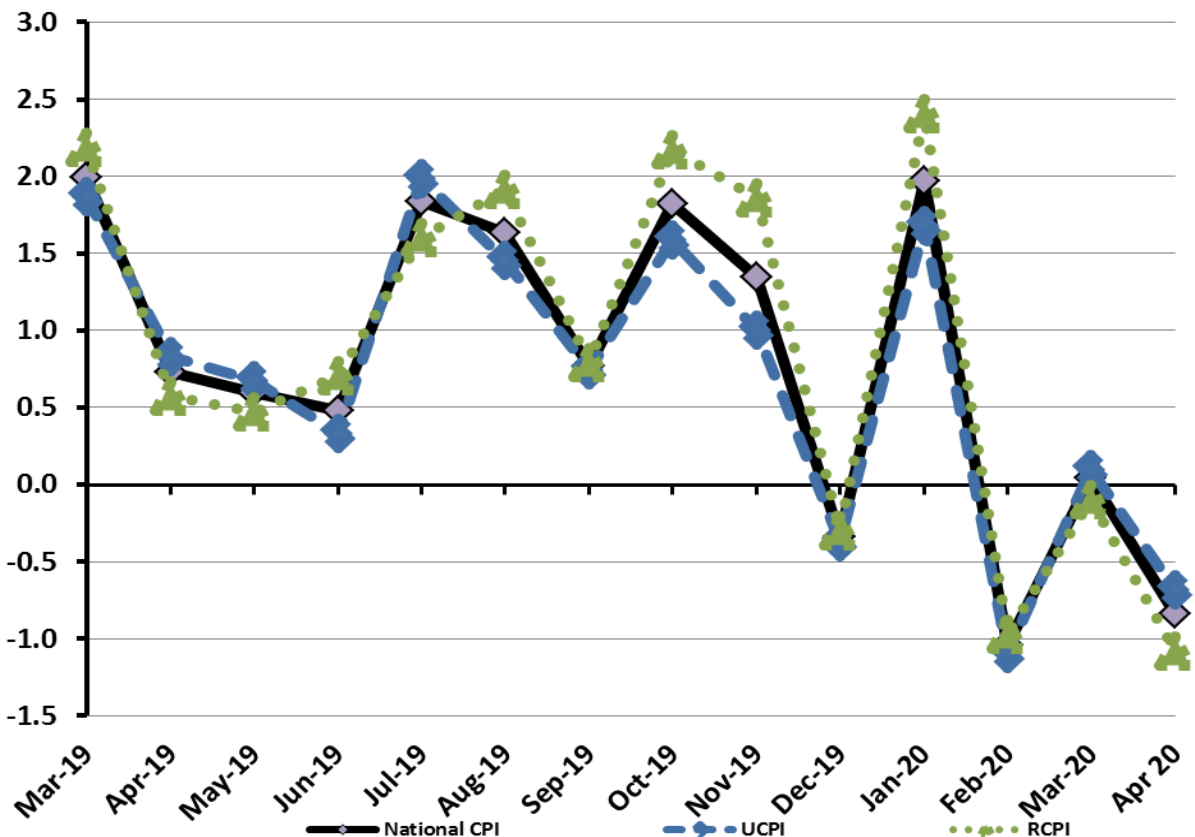


Figure 6: CPI M.o.M (National, Urban, Rural)



I. National Consumer Price Index (N-CPI)

The **National Consumer Price Index** of April 2020 is decreased by 0.84% over March 2020 and increased by 8.53% over corresponding month of the last year i.e. April 2019.

Table 1 : Consumer Price Index (National) by Group of Commodities and Services (Base 2015-16)

No	Group	Group Weight (%)	Indices			% Change April 2020 Over		Impact (In % points) Apr 2020 Over	
			Apr 2020	Mar 2020	Apr 2019	Mar 2020	Apr 2019	Mar 2020	Apr 2019
	General	100.00	130.59	131.69	120.33	-0.84	8.53	-0.84	8.53
1.	Food & Non-alcoholic Bev.	34.58	130.01	132.18	116.41	-1.64	11.69	-0.57	3.91
	<i>Non-perishable Food Items</i>	29.60	128.11	129.99	114.61	-1.44	11.78	-0.42	3.32
	<i>Perishable Food Items</i>	4.99	141.28	145.20	127.10	-2.70	11.16	-0.15	0.59
2.	Alcoholic Bev.& Tobacco	1.02	137.52	136.40	115.02	0.81	19.55	0.01	0.19
3.	Clothing & Footwear	8.60	132.72	132.72	120.44	0.00	10.20	0.00	0.88
4.	Housing, Water, Electricity, Gas & Fuels	23.63	128.74	129.17	122.45	-0.33	5.13	-0.08	1.23
5.	Furnishing & Household Equipment Maintenance	4.10	128.27	127.88	117.67	0.30	9.00	0.01	0.36
6.	Health	2.79	140.05	139.55	126.75	0.36	10.49	0.01	0.31
7.	Transport	5.91	132.85	139.18	128.43	-4.55	3.44	-0.28	0.22
8.	Communication	2.21	106.96	106.96	105.14	0.00	1.74	0.00	0.03
9.	Recreation & Culture	1.59	119.70	119.54	113.94	0.13	5.05	0.00	0.08
10.	Education	3.79	142.40	142.40	137.94	0.00	3.23	0.00	0.14
11.	Restaurants & Hotels	6.92	130.82	130.63	120.63	0.14	8.45	0.01	0.59
12.	Miscellaneous	4.87	137.07	135.75	122.45	0.97	11.94	0.05	0.59

II. Urban Consumer Price Index (UCPI)

The **Urban Consumer Price Index** of April 2020 is decreased by 0.68% over March 2020 and increased by 7.68% over corresponding month of the last year i.e. April 2019.

Table 2 : Consumer Price Index (Urban) by Group of Commodities and Services (Base 2015-16)

No	Group	Group Weight (%)	Indices			% Change April 2020 Over		Impact (In % points) Apr 2020 Over	
			Apr 2020	Mar 2020	Apr 2019	Mar 2020	Apr 2019	Mar 2020	Apr 2019
	General	100.00	130.60	131.49	121.29	-0.68	7.68	-0.68	7.68
1.	Food & Non-alcoholic Bev.	30.42	129.25	130.93	116.77	-1.28	10.69	-0.39	3.13
	Non-perishable Food Items	25.97	126.92	128.70	114.37	-1.38	10.97	-0.35	2.69
	Perishable Food Items	4.46	142.86	143.95	130.78	-0.76	9.24	-0.04	0.44
2.	Alcoholic Bev.& Tobacco	0.85	144.82	143.54	121.92	0.89	18.78	0.01	0.16
3.	Clothing & Footwear	8.01	129.69	129.69	118.40	0.00	9.54	0.00	0.75
4.	Housing, Water, Electricity, Gas & Fuels	27.03	130.08	130.40	123.74	-0.25	5.12	-0.07	1.41
5.	Furnishing & Household Equipment Maintenance	4.09	128.45	128.21	118.62	0.19	8.29	0.01	0.33
6.	Health	2.31	139.60	139.56	127.56	0.03	9.44	0.00	0.23
7.	Transport	6.14	133.49	139.85	128.18	-4.55	4.14	-0.30	0.27
8.	Communication	2.35	108.22	108.22	105.83	0.00	2.26	0.00	0.05
9.	Recreation & Culture	1.73	118.08	118.01	112.59	0.06	4.88	0.00	0.08
10.	Education	4.88	144.98	144.98	140.18	0.00	3.42	0.00	0.19
11.	Restaurants & Hotels	7.41	129.74	129.70	120.85	0.03	7.36	0.00	0.54
12.	Miscellaneous	4.77	137.08	135.66	123.44	1.05	11.05	0.05	0.54

Main contributors to month-on-month and year-on-year percentage changes are given below and detail is given in Annexure A.

1. MONTH-ON-MONTH Top few commodities which varied from previous month are given below: -

Food Items Increased: Pulse masoor(27.54%), Pulse moong (23.11%), Fresh fruits(17.71%), Eggs (14.71%), Pulse mash(13.98%), Pulse gram(10.83%), Besan(8.03%), Beans(4.72%), Gram whole (4.38%) and Sugar(2.55%).

Decreased: Onions (22.94%), Chicken (21.81%), Tomatoes (11.1%), Milk fresh (4.29%), Fresh vegetables (3.86%), Wheat (3.29%) and Vegetable ghee (1.01%).

Non-food Items Increased: Personal Effects n.e.c.(3.70%).

Decreased: Liquefied Hydrocarbons (18.67%) and Motor fuel (8.85%).

YEAR-ON-YEAR: Top few commodities which varied from previous year i.e. April 2019 are given below:-

Food Items Increased: Pulse moong (101.1%), Potatoes(92.26%), Pulse mash(67.89%), Pulse masoor(47.67%), Eggs (44.16%), Onions(40.72%), Gur(33.75%), Pulse gram(31.22%), Beans(29.92%), Besan(29.01%), Sugar(27.8%), Vegetable ghee(26.31%), Cooking oil(22.21%), Wheat(16.76%), Wheat flour (14.82%), Meat(13.75%), Gram whole (12.52%) and Tea(9.54%)

Decreased: Tomatoes (55.44%), Chicken (28.76%) and Fish (2.52%)

Non-food Items Increased: Gas charges (54.84%), Construction input items (16.6%), Motor vehicles (13.59%), Drugs and medicines (13.03%), Footware(11.49%) and Motor vehicle accessories(11.25%).

Decreased: Electricity charges (5.88%) and Liquefied Hydrocarbons (2.34%)

III. Rural Consumer Price Index (RCPI)

The **Rural Consumer Price Index** of April 2020 is decreased by 1.08% over March 2020 and increased by 9.83% over corresponding month of the last year i.e. April 2019.

Table 3: Consumer Price Index (Rural) by Group of Commodities and Services (Base 2015-16)

No	Group	Group Weight (%)	Indices			% Change April 2020 Over		Impact (In % points) Apr 2020 Over	
			Apr 2020	Mar 2020	Apr 2019	Mar 2020	Apr 2019	Mar 2020	Apr 2019
	General	100.00	130.58	132.00	118.89	-1.08	9.83	-1.08	9.83
1.	Food & Non-alcoholic Bev.	40.87	130.87	133.59	116.00	-2.04	12.82	-0.84	5.11
	Non-perishable Food Items	35.08	129.45	131.43	114.88	-1.51	12.68	-0.53	4.30
	Perishable Food Items	5.79	139.45	146.65	122.83	-4.91	13.53	-0.32	0.81
2.	Alcoholic Bev. & Tobacco	1.28	130.15	129.21	108.07	0.73	20.43	0.01	0.24
3.	Clothing & Footwear	9.48	136.59	136.59	123.03	0.00	11.02	0.00	1.08
4.	Housing, Water, Electricity, Gas & Fuels	18.49	125.77	126.44	119.60	-0.53	5.16	-0.09	0.96
5.	Furnishing & Household Equipment Maintenance	4.10	127.99	127.38	116.25	0.48	10.10	0.02	0.41
6.	Health	3.51	140.49	139.54	125.94	0.68	11.55	0.03	0.43
7.	Transport	5.56	131.78	138.06	128.84	-4.55	2.28	-0.26	0.14
8.	Communication	1.99	104.72	104.72	103.90	0.00	0.79	0.00	0.01
9.	Recreation & Culture	1.38	122.78	122.45	116.51	0.27	5.38	0.00	0.07
10.	Education	2.13	133.48	133.48	130.20	0.00	2.52	0.00	0.06
11.	Restaurants & Hotels	6.19	132.76	132.31	120.22	0.34	10.43	0.02	0.65
12.	Miscellaneous	5.02	137.06	135.89	121.03	0.86	13.24	0.04	0.68

Main contributors to month-on-month and year-on-year percentage changes are given below and detail is given in Annexure A.

1. **MONTH-ON-MONTH** Top few commodities which varied from previous month are given below: -

Food Items Increased: Fresh fruits(23.26%), Pulse Moong(18.25%), Pulse Masoor(15.66%), Eggs(11.21%), Pulse Mash(6.94%), Pulse Gram(6.77%), Beans(5.8%), Besan(2.8%) and Sugar(1.99%).

Decreased: Onions (25.01%), Chicken (19.84%), Fresh Vegetables (11.19%), Potatoes (6.57%), Tomatoes (5.72%), Milk fresh (4.72%) and Wheat (4.43%).

Non-food Items Increased: Personal Effects n.e.c.(2.57%), Hospitals Services(1.35%) and Washing Soaps, Detergents and Match Box(0.93%)

Decreased: Liquefied Hydrocarbons(12.95%) and Motor Fuels(9.42%)

YEAR-ON-YEAR: Top few commodities which varied from previous year i.e. April 2019 are given below:-

Food Items Increased: Potatoes(103.48%), Pulse Moong(94.41%), Pulse Mash(56.15%), Pulse Masoor(45.11%), Onions(38.93%), Beans(34.48%), Vegetable ghee(29.47%), Eggs(29.26%), Pulse Gram(28.54%), Gur(27.05%), Cooking oil(26.84%), Sugar(24.54%), Wheat(21.88%), Besan(20.92%), Wheat Flour(18.13%), and Rice(12.75%).

Decreased: Tomatoes(56.28%), Chicken(28.5%) and Fish(0.02%)

Non-food Items Increased: Personal Effects n.e.c.(24.45%), Doctor Clinic Fee(18.37%), Hosiry(15.89%), Cotton Cloth(14.77%), Cleaning and Laundering(13.73%), Solid Fuel(13.12%), Medical Tests(12.9%), Motor Vehicles Accessories(12.66%), Construction Wage Rates(12.54%), Furniture and Furnishing(12.52%), Drugs and Medicines(12.36%), Dental Services(11.98%), Personal Grooming Services(11.23%) and Readymade Garments(10.65%).

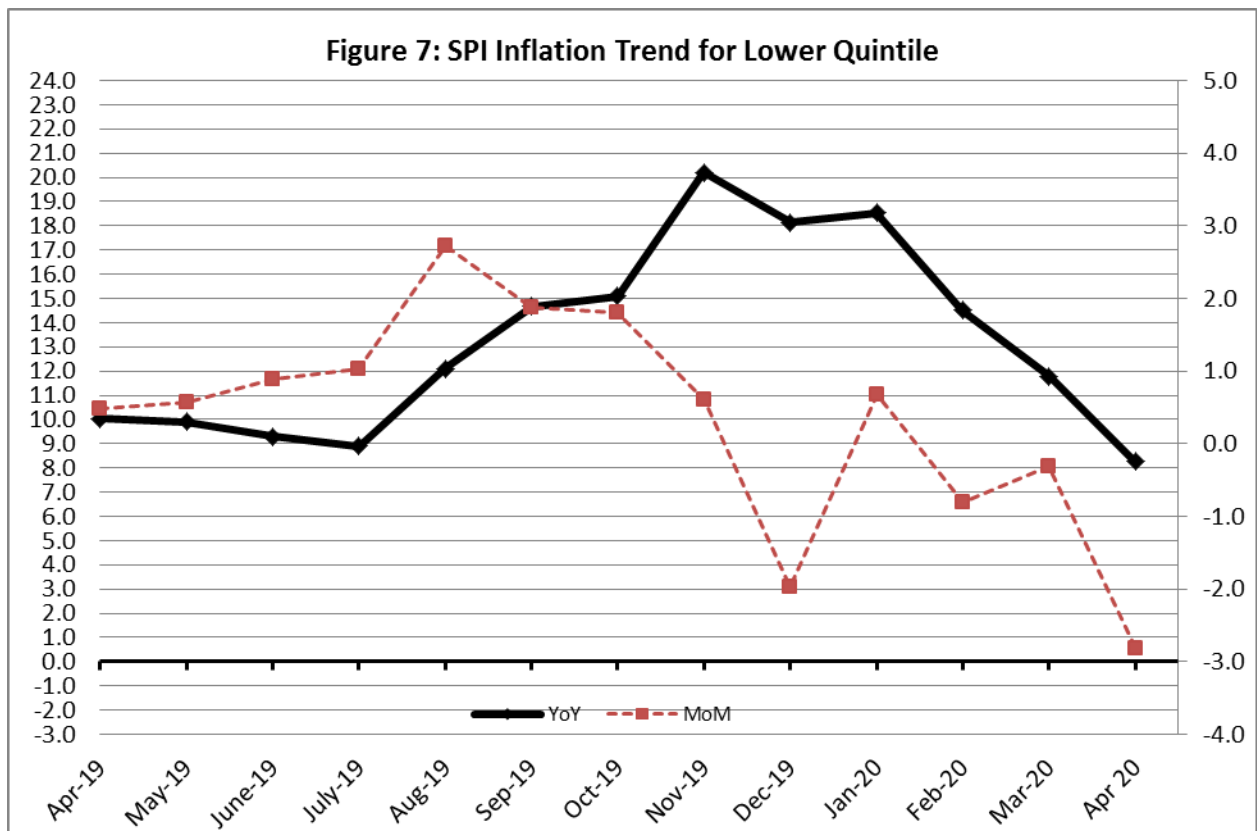
Decreased: Electricity Charges (5.88%).

IV. Sensitive Price Indicator

Quintile-wise percentage changes YoY and MoM are given below in Table 4. The series from April 2019 to April 2020 is also graphed below in Figure 7.

Table 4: Sensitive Price Indicator (Base 2015-16)					
Quintiles	Indices			% Change April 2020 Over	
	April 2020	March 2020	April 2019	March 2020	April 2019
1	130.90	133.26	119.79	-1.77	9.27
2	125.50	128.14	115.63	-2.06	8.54
3	127.69	130.54	114.32	-2.18	11.70
4	124.65	127.80	112.50	-2.46	10.80
5	127.05	130.80	118.04	-2.87	7.63
Combined	125.63	128.98	115.78	-2.60	8.51

Table 4.1 : Weekly Percentage Change of SPI During January-2020					
Quintiles	% Change with Previous week				
	02-04-2020	09-04-2020	16-04-2020	23-04-2020	30-04-2020
Quintile 1	-1.77	-0.67	-0.01	0.91	0.65
Combined	-2.01	-0.44	0.15	0.62	0.72



V. Wholesale Price Index

The Wholesale Price Index for April, 2020 decreased by 2.04% over March 2020. It increased by 4.92% over the corresponding month of the last year. YoY and MoM movements, from April, 2019 to April, 2020 are also graphed below in Figure 8.

Table 5: Wholesale Price Index by Group of Commodities (Base 2015-16)

No.	Group	Group Weight (%)	Indices			% Change April 2020 Over		Impact (In % points) Apr 2020 Over	
			Apr 20	Mar 20	Apr 19	Mar 20	Apr 19	Mar 20	Apr 19
	General	100.00	139.12	142.01	132.60	-2.04	4.92	-2.04	4.92
1.	Agriculture, Forestry & Fishery Products	25.77	138.42	140.18	129.45	-1.26	6.93	-0.32	1.74
2.	Ores & Minerals, Electricity, Gas & Water	12.01	161.67	162.56	134.65	-0.55	20.07	-0.08	2.45
3.	Food Products, Beverages & Tobacco, Textiles, Apparel & Leather Products	31.11	135.12	133.66	124.65	1.09	8.40	0.32	2.46
	i. Food Products, Beverages & Tobacco	20.07	131.89	129.62	117.14	1.75	12.59	0.32	2.23
	ii. Textiles & Apparels	10.33	142.59	142.59	140.23	0.00	1.68	0.00	0.18
	iii. Leather Products	0.71	117.90	117.90	110.18	0.00	7.01	0.00	0.04
4.	Other Transportable Goods except Metal Products, Machinery & Equipment	22.40	134.95	147.44	152.20	-8.47	-11.33	-1.97	-2.91
5.	Metal Products, Machinery & Equipment	8.72	135.13	134.90	117.13	0.17	15.37	0.01	1.18

Main contributors to month-on-month and year-on-year percentage changes are given below and detail is given in Annexure C.

- MONTH-ON-MONTH** Top few commodities which varied from previous month are given below: -

Increased: Pulses(15.48%), Other Cereal Flour(12.04%), Tractors(11.06%), Eggs(9.69%), Fresh Fruits(8.8%), Sugar Crops(6.33%), Maize(5.83%).

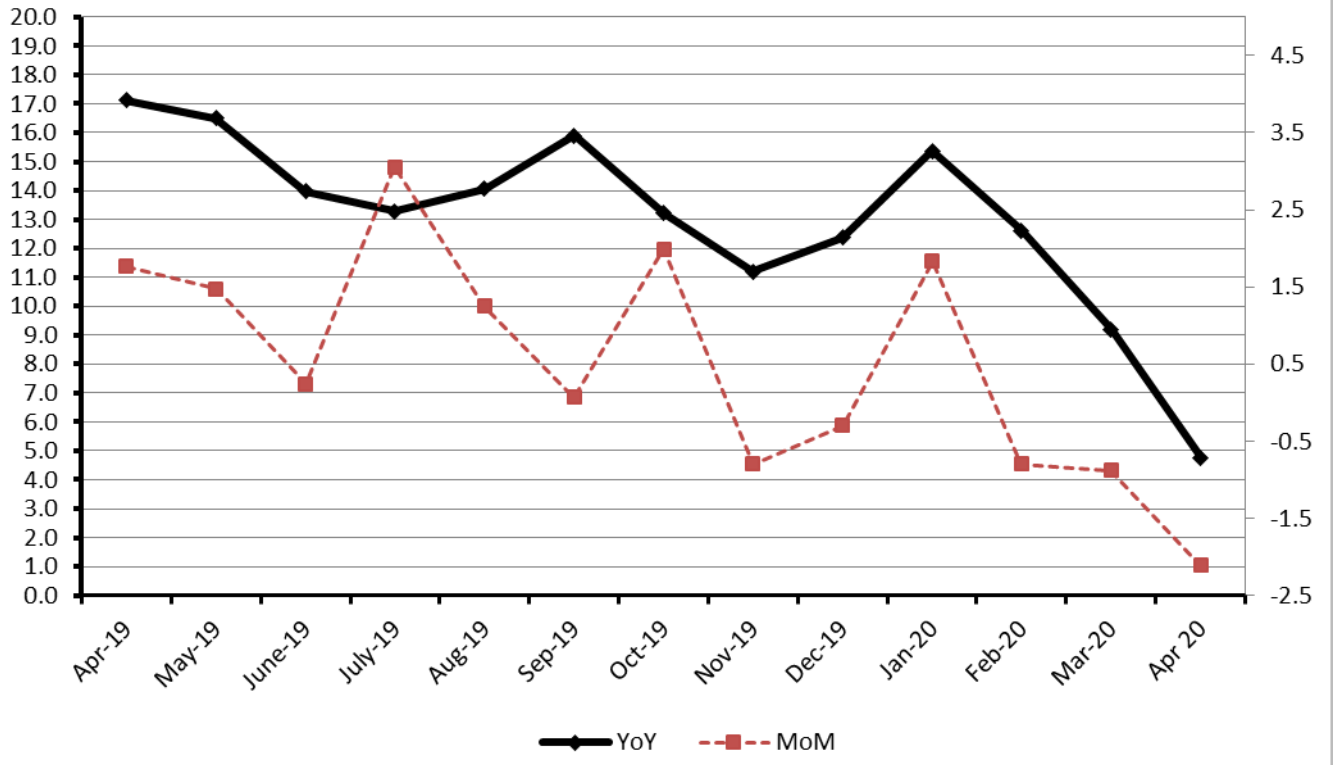
Decreased: Vegetables (19.41%), Poultry(16.56%), Furnace Oil(16%), Diesel Oil(15.06%), Edible Roots / Potatoes(12.82%), Motor Spirit(10.81%).

YEAR-ON-YEAR Top few commodities which varied from previous year i.e. April, 2019 are given below: -

Increased: Edible Roots / Potatoes(134.05%), Stimulant & Spice Crops(83.59%), Eggs(43.57%), Lathe Machines(41.1%), Pulses(36.48%), Dyeing Material(36.33%), Cotton Seeds(35.95%), Bed Foam(30.71%), Natural Gas Liquified(29.21%), Other Cereal Flour(28.38%), Vegetable Ghee(25.34%), Sugar Refined(24.39%), Chocolate(22.64%), Footwears(21.71%), Printing Paper(21.31%), Unmanufactured Tobacco(20.85%), Medicines(20.18%), Other Oil Seeds(19.62%), Cultivators(19.1%), Maize(19.06%).

Decreased: Furnace Oil(33.36%), Poultry(28.6%), Vegetables(19.04%), Diesel Oil(16.59%), Hides, Skins & Fur Skins, Raw(14.09%), kerosene Oil(13.28%).

Figure 8: WPI Inflation



Annexure A:CPI (Urban) Index Numbers by Commodity Groups & Commodities (2015-16=100)

Item and Specification	Weight	Index Numbers			% Change in Apr 2020 over	
		Apr 20	Mar 20	Apr 19	Mar 2020	Apr 2019
General	100.0000	130.60	131.49	121.29	- 0.68	+ 7.68
Food and non-alcoholic Bevera	30.4215	129.25	130.93	116.77	- 1.28	+ 10.69
01 Wheat	0.6120	121.08	125.20	103.70	- 3.29	+ 16.76
02 Wheat flour	3.0075	116.61	116.90	101.56	- 0.25	+ 14.82
03 Wheat products	0.0936	123.84	125.56	107.19	- 1.37	+ 15.53
04 Besan	0.0830	133.72	123.78	103.65	+ 8.03	+ 29.01
05 Rice	1.1804	132.45	131.98	122.45	+ 0.36	+ 8.17
06 Bakery and confectionary	0.4770	126.31	126.07	109.67	+ 0.19	+ 15.17
07 Nimco	0.1224	124.74	124.31	110.80	+ 0.35	+ 12.58
08 Meat	2.0411	145.46	143.33	127.88	+ 1.49	+ 13.75
09 Chicken	1.3631	96.02	122.80	134.78	- 21.81	- 28.76
10 Fish	0.3855	114.32	115.10	117.28	- 0.68	- 2.52
11 Milk fresh	7.1070	116.44	121.66	112.08	- 4.29	+ 3.89
12 Milk products	0.6407	122.67	124.15	115.01	- 1.19	+ 6.66
13 Milk powder	0.3106	129.99	129.49	113.12	+ 0.39	+ 14.91
14 Eggs	0.5083	134.17	116.96	93.07	+ 14.71	+ 44.16
15 Butter	0.0932	165.88	165.21	123.62	+ 0.41	+ 34.19
16 Mustard oil	0.0120	125.59	125.65	107.35	- 0.05	+ 16.99
17 Cooking oil	1.1016	146.37	147.02	119.77	- 0.44	+ 22.21
18 Vegetable ghee	1.0324	150.61	152.14	119.24	- 1.01	+ 26.31
19 Dry fruits	0.3299	129.31	132.27	116.67	- 2.24	+ 10.83
20 Fresh fruits	1.4363	153.98	130.81	149.52	+ 17.71	+ 2.98
21 Pulse masoor	0.1624	119.72	93.87	81.07	+ 27.54	+ 47.67
22 Pulse moong	0.1697	177.27	143.99	88.15	+ 23.11	+ 101.1
23 Pulse mash	0.1152	107.87	94.64	64.25	+ 13.98	+ 67.89
24 Pulse gram	0.1660	135.67	122.41	103.39	+ 10.83	+ 31.22
25 Gram whohe	0.0912	133.69	128.08	118.81	+ 4.38	+ 12.52
26 Beans	0.0408	143.77	137.29	110.66	+ 4.72	+ 29.92
27 Potatoes	0.4496	172.48	173.87	89.71	- 0.80	+ 92.26
28 Onions	0.5928	131.88	171.14	93.72	- 22.94	+ 40.72
29 Tomatoes	0.3459	67.97	76.46	152.53	- 11.10	- 55.44
30 Fresh vegetables	1.5306	138.55	144.11	132.80	- 3.86	+ 4.33
31 Sugar	1.1130	131.47	128.20	102.87	+ 2.55	+ 27.80
32 Gur	0.0379	139.17	138.91	104.05	+ 0.19	+ 33.75
33 Honey	0.1017	118.89	118.78	111.22	+ 0.09	+ 6.90
34 Sweetmeat	0.3535	138.87	138.69	123.46	+ 0.13	+ 12.48
35 Ice cream	0.1044	126.06	126.01	112.37	+ 0.04	+ 12.18
36 Condiments and Spices	1.3340	160.45	161.65	130.28	- 0.74	+ 23.16
37 Dessert preparation	0.0419	121.42	120.70	111.92	+ 0.60	+ 8.49
38 Tea	0.8427	140.74	140.74	128.48	+ 0.00	+ 9.54
39 Beverages	0.8906	124.67	123.31	111.10	+ 1.10	+ 12.21
Alcoholic Beverages, Tobacco	0.8540	144.82	143.54	121.92	+ 0.89	+ 18.78
40 Cigarettes	0.7167	134.87	134.73	110.86	+ 0.10	+ 21.66
41 Pan prepared	0.1373	196.75	189.54	179.65	+ 3.80	+ 9.52
Clothing and footwear	8.0096	129.69	129.69	118.40	+ 0.00	+ 9.54
42 Cotton cloth	2.2227	128.83	128.83	116.79	+ 0.00	+ 10.31
43 Woolen cloth	0.8361	125.99	125.98	110.99	+ 0.01	+ 13.51
44 Readymade garments	1.3196	129.96	129.95	121.92	+ 0.01	+ 6.59
45 Woolen readymade garments	0.4307	126.88	126.88	115.34	+ 0.00	+ 10.01
46 Tailoring	1.0741	136.89	136.89	126.92	+ 0.00	+ 7.86
47 Hosiry	0.4070	127.52	127.52	121.86	+ 0.00	+ 4.64
48 Dopatta	0.1713	123.85	123.85	111.36	+ 0.00	+ 11.22
49 Cleaning and laundring	0.0665	130.50	130.50	121.79	+ 0.00	+ 7.15
50 Footware	1.4816	129.66	129.66	116.30	+ 0.00	+ 11.49
Housing, water, Elec., Gas an	27.0332	130.08	130.40	123.74	- 0.25	+ 5.12
51 House rent	19.2558	130.02	129.68	124.78	+ 0.26	+ 4.20
52 Construcion input items	0.3765	143.04	142.80	122.68	+ 0.17	+ 16.60
53 Construction wage rates	0.2025	148.38	148.10	137.29	+ 0.19	+ 8.08
54 Water supply	0.5269	131.89	131.89	120.26	+ 0.00	+ 9.67
55 Garbage collection	0.1064	156.98	154.80	144.55	+ 1.41	+ 8.60
56 Electricity charges	4.5562	108.04	108.04	114.79	+ 0.00	- 5.88
57 Gas charges	1.0807	216.94	216.94	140.11	+ 0.00	+ 54.84
58 Liquified Hydrocarbons	0.5064	133.83	164.55	137.04	- 18.67	- 2.34
59 Solid Fuel	0.4218	114.27	114.27	108.32	+ 0.00	+ 5.49
Furnishing and household equi	4.0937	128.45	128.21	118.62	+ 0.19	+ 8.29

Annexure A:CPI (Urban) Index Numbers by Commodity Groups & Commodities (2015-16=100)

Item and Specification	Weight	Index Numbers			% Change in Apr 2020 over	
		Apr 20	Mar 20	Apr 19	Mar 2020	Apr 2019
60 Furniture and furnishing	0.4750	128.32	128.32	117.46	+ 0.00	+ 9.25
61 Carpets	0.0308	111.09	111.09	105.44	+ 0.00	+ 5.36
62 Household textiles	0.3420	125.71	125.71	121.80	+ 0.00	+ 3.21
63 Household equipments	1.0032	127.53	127.53	118.07	+ 0.00	+ 8.01
64 Plastic products	0.0536	116.63	116.63	113.41	+ 0.00	+ 2.84
65 Major tools & equipments	0.0084	120.32	120.32	110.14	+ 0.00	+ 9.24
66 Washing soap/detergents/match	1.4112	129.31	128.60	117.77	+ 0.55	+ 9.80
67 Household servant	0.7695	130.99	130.99	121.16	+ 0.00	+ 8.11
Health	2.3098	139.60	139.56	127.56	+ 0.03	+ 9.44
68 Drugs and medicines	1.0735	138.92	138.81	122.90	+ 0.08	+ 13.03
69 Therapeutic Appliances and Eq	0.0054	107.20	107.20	106.35	+ 0.00	+ 0.80
70 Doctor (MBBS) clinic fee	0.4044	168.77	168.77	148.16	+ 0.00	+ 13.91
71 Dental services	0.0156	118.61	118.61	111.29	+ 0.00	+ 6.58
72 Medical tests	0.2367	124.34	124.34	119.56	+ 0.00	+ 4.00
73 Hospitals services	0.5742	127.49	127.53	125.69	- 0.03	+ 1.43
Transport	6.1368	133.49	139.85	128.18	- 4.55	+ 4.14
74 Motor vehicles	0.8097	146.48	146.48	128.95	+ 0.00	+ 13.59
75 Motor vehicle accessories	0.1941	128.16	127.83	115.20	+ 0.26	+ 11.25
76 Motor fuel	2.9088	138.53	151.98	137.96	- 8.85	+ 0.41
77 Mechanical services	0.4290	129.15	129.15	119.21	+ 0.00	+ 8.34
78 Motor vehicle tax	0.0482	126.72	126.72	124.01	+ 0.00	+ 2.19
79 Transport services	1.7470	120.93	120.92	115.31	+ 0.01	+ 4.87
Communication	2.3536	108.22	108.22	105.83	+ 0.00	+ 2.26
80 Postal services	0.0190	147.05	147.05	147.05	+ 0.00	+ 0.00
81 Communication apparatus	0.4524	118.74	118.74	108.74	+ 0.00	+ 9.20
82 Communication Services	1.8822	105.30	105.30	104.72	+ 0.00	+ 0.55
Recreation and culture	1.7301	118.08	118.01	112.59	+ 0.06	+ 4.88
83 Recreation and culture	0.6478	110.25	110.25	107.43	+ 0.00	+ 2.62
84 Text books	0.6655	117.25	117.25	109.49	+ 0.00	+ 7.09
85 Newspapers	0.0716	151.55	151.55	151.55	+ 0.00	+ 0.00
86 stationery	0.3452	127.42	127.11	120.15	+ 0.24	+ 6.05
Education	4.8807	144.98	144.98	140.18	+ 0.00	+ 3.42
87 Education	4.8807	144.98	144.98	140.18	+ 0.00	+ 3.42
Restaurants and hotels	7.4050	129.74	129.70	120.85	+ 0.03	+ 7.36
88 Readymade food	5.5235	128.98	128.93	119.81	+ 0.04	+ 7.65
89 Marriage Hall Charges	1.7514	133.41	133.41	124.80	+ 0.00	+ 6.90
90 Accommodation Services	0.1301	112.40	112.40	111.88	+ 0.00	+ 0.46
Misc. goods and services	4.7720	137.08	135.66	123.44	+ 1.05	+ 11.05
91 Personal Grooming Services	0.8001	125.75	125.75	119.48	+ 0.00	+ 5.25
92 Electrical Appliances for Per	0.0465	116.78	116.78	114.52	+ 0.00	+ 1.97
93 Appliances/Articles/Products	2.9807	127.62	127.37	117.91	+ 0.20	+ 8.24
94 Personal Effects n.e.c.	0.9447	177.51	171.17	144.71	+ 3.70	+ 22.67

Annexure B:CPI (Rural) Index Numbers by Commodity Groups & Commodities (2015-16=100)

Item and Specification	Weight	Index Numbers			% Change in Apr 2020 over	
		Apr 20	Mar 20	Apr 19	Mar 2020	Apr 2019
General	100.0000	130.58	132.00	118.89	- 1.08	+ 9.83
Food and non-alcoholic Beverage	40.8668	130.87	133.59	116.00	- 2.04	+ 12.82
01 Wheat	3.4736	125.22	131.02	102.74	- 4.43	+ 21.88
02 Wheat Flour	3.4297	119.76	120.23	101.38	- 0.39	+ 18.13
03 Wheat Products	0.1068	125.33	124.79	110.95	+ 0.43	+ 12.96
04 Besan	0.0728	133.53	129.89	110.43	+ 2.80	+ 20.92
05 Rice	1.5501	164.46	161.98	145.86	+ 1.53	+ 12.75
06 Bakery and Confectionary	0.3702	127.14	125.74	113.24	+ 1.11	+ 12.27
07 Nimco	0.0774	118.14	118.03	107.82	+ 0.09	+ 9.57
08 Meat	1.7146	144.82	143.87	132.30	+ 0.66	+ 9.46
09 Chicken	1.4641	99.00	123.50	138.46	- 19.84	- 28.50
10 Fish	0.2640	123.07	125.74	123.09	- 2.12	- 0.02
11 Milk fresh	10.3803	117.17	122.98	114.09	- 4.72	+ 2.70
12 Milk products	0.9624	121.00	124.46	115.48	- 2.78	+ 4.78
13 Milk powder	0.1062	123.27	123.27	105.78	+ 0.00	+ 16.53
14 Eggs	0.5665	127.50	114.65	98.64	+ 11.21	+ 29.26
15 Butter	0.3333	127.66	127.54	118.09	+ 0.09	+ 8.10
16 Mustard oil	0.0136	129.44	130.05	112.07	- 0.47	+ 15.50
17 Cooking oil	0.6011	152.72	152.84	120.40	- 0.08	+ 26.84
18 Vegetable ghee	2.3764	160.09	160.64	123.65	- 0.34	+ 29.47
19 Dry fruits	0.2496	138.35	138.75	124.37	- 0.29	+ 11.24
20 Fresh fruits	1.4505	158.88	128.90	152.95	+ 23.26	+ 3.88
21 Pulse Masoor	0.2076	115.51	99.87	79.60	+ 15.66	+ 45.11
22 Pulse Moong	0.2510	182.55	154.37	93.90	+ 18.25	+ 94.41
23 Pulse Mash	0.1465	103.39	96.68	66.21	+ 6.94	+ 56.15
24 Pulse Gram	0.2751	130.67	122.38	101.66	+ 6.77	+ 28.54
25 Gram Whole	0.1116	125.99	124.37	116.75	+ 1.30	+ 7.91
26 Beans	0.0896	159.45	150.71	118.57	+ 5.80	+ 34.48
27 Potatoes	0.7437	167.18	178.94	82.16	- 6.57	+ 103.4
28 Onions	0.8965	125.43	167.27	90.28	- 25.01	+ 38.93
29 Tomatoes	0.5069	67.20	71.28	153.72	- 5.72	- 56.28
30 Fresh Vegetables	2.0947	135.18	152.22	122.87	- 11.19	+ 10.02
31 Sugar	2.0296	131.70	129.13	105.75	+ 1.99	+ 24.54
32 Gur	0.1522	133.61	131.24	105.16	+ 1.81	+ 27.05
33 Honey	0.0296	122.76	122.60	119.47	+ 0.13	+ 2.75
34 Sweetmeat	0.3967	126.10	126.10	112.04	+ 0.00	+ 12.55
35 Ice Cream	0.0568	125.95	125.95	114.74	+ 0.00	+ 9.77
36 Condiments and Spices	1.4919	165.74	153.53	115.14	+ 7.95	+ 43.95
37 Dessert Preparation	0.0133	117.18	115.77	109.33	+ 1.22	+ 7.18
38 Tea	1.2566	137.87	137.87	125.74	+ 0.00	+ 9.65
39 Beverages	0.5537	124.59	123.45	108.81	+ 0.92	+ 14.50
Alcoholic Beverages, Tobacco	1.2786	130.15	129.21	108.07	+ 0.73	+ 20.43
40 Cigarettes	1.2364	129.22	128.25	106.94	+ 0.76	+ 20.83
41 Pan Prepared	0.0422	157.44	157.44	141.17	+ 0.00	+ 11.53
Clothing and footwear	9.4826	136.59	136.59	123.03	+ 0.00	+ 11.02
42 Cotton Cloth	2.8381	147.58	147.58	128.59	+ 0.00	+ 14.77
43 Woolen Cloth	1.0959	125.62	125.62	115.97	+ 0.00	+ 8.32
44 Readymade Garments	1.1345	133.09	133.09	120.28	+ 0.00	+ 10.65
45 Woolen Readymade Garments	0.5401	130.27	130.27	119.13	+ 0.00	+ 9.35
46 Tailoring	1.2999	133.68	133.68	126.62	+ 0.00	+ 5.58
47 Hosiry	0.4322	155.66	155.66	134.32	+ 0.00	+ 15.89
48 Dopatta	0.2078	130.72	130.72	116.66	+ 0.00	+ 12.05
49 Cleaning and Laundering	0.0176	128.85	128.85	113.29	+ 0.00	+ 13.73
50 Footware	1.9165	128.84	128.84	117.36	+ 0.00	+ 9.78
Housing, water, Elec., Gas an	18.4853	125.77	126.44	119.60	- 0.53	+ 5.16
51 House Rent	8.6110	130.00	129.42	123.64	+ 0.45	+ 5.14
52 Construction Input Items	0.6306	120.52	119.66	111.69	+ 0.72	+ 7.91
53 Construction Wage Rates	0.2526	148.22	147.17	131.71	+ 0.71	+ 12.54
54 Water Supply	0.0645	158.09	158.09	121.10	+ 0.00	+ 30.55
55 Garbage Collection	0.0080	138.15	132.21	130.71	+ 4.49	+ 5.69
56 Electricity Charges	3.4431	108.04	108.04	114.79	+ 0.00	- 5.88
57 Liquified Hydrocarbons	0.9994	129.08	148.28	125.99	- 12.95	+ 2.45
58 Solid Fuel	4.4761	129.50	129.30	114.48	+ 0.15	+ 13.12
Furnishing and household equi	4.1031	127.99	127.38	116.25	+ 0.48	+ 10.10
59 Furniture and Furnishing	0.5786	130.01	129.43	115.54	+ 0.45	+ 12.52

Annexure B:CPI (Rural) Index Numbers by Commodity Groups & Commodities (2015-16=100)

Item and Specification	Weight	Index Numbers			% Change in Apr 2020 over	
		Apr 20	Mar 20	Apr 19	Mar 2020	Apr 2019
60 Household Textiles	0.4382	127.00	126.39	117.12	+ 0.48	+ 8.44
61 Household Equipments	1.2774	132.64	132.64	123.55	+ 0.00	+ 7.36
62 Plastic Products	0.0776	136.39	136.39	124.70	+ 0.00	+ 9.37
63 Major Tools and Equipments	0.0324	115.54	115.54	111.79	+ 0.00	+ 3.35
64 Washing Soaps, Detergents and	1.6989	123.92	122.78	110.49	+ 0.93	+ 12.15
Health	3.5141	140.49	139.54	125.94	+ 0.68	+ 11.55
65 Drugs and Medicines	1.5792	141.50	140.99	125.93	+ 0.36	+ 12.36
66 Doctor Clinic Fee	0.5128	161.02	159.78	136.03	+ 0.78	+ 18.37
67 Dental Services	0.0181	122.97	122.97	109.81	+ 0.00	+ 11.98
68 Medical Tests	0.3967	142.53	142.04	126.25	+ 0.34	+ 12.90
69 Hospitals Services	1.0073	127.98	126.28	120.98	+ 1.35	+ 5.79
Transport	5.5580	131.78	138.06	128.84	- 4.55	+ 2.28
70 Motor Vehicles	0.7305	127.10	127.10	117.66	+ 0.00	+ 8.02
71 Motor Vehicles Accessories	0.1572	135.22	135.22	120.02	+ 0.00	+ 12.66
72 Motor Fuels	2.4932	135.91	150.04	137.15	- 9.42	- 0.90
73 Mechanical Services	0.3645	153.45	152.53	144.83	+ 0.60	+ 5.95
74 Motor Vehicle Tax	0.0174	127.98	127.98	127.98	+ 0.00	+ 0.00
75 Transport Services	1.7952	123.29	123.29	119.38	+ 0.00	+ 3.28
Communication	1.9940	104.72	104.72	103.90	+ 0.00	+ 0.79
76 Postal Services	0.0070	149.43	149.43	113.66	+ 0.00	+ 31.47
77 Communication Apparatus	0.3362	118.95	118.95	115.65	+ 0.00	+ 2.85
78 Communication Services	1.6508	101.63	101.63	101.47	+ 0.00	+ 0.16
Recreation and culture	1.3764	122.78	122.45	116.51	+ 0.27	+ 5.38
79 Recreation and Culture	0.4763	128.13	127.52	117.57	+ 0.48	+ 8.98
80 Text Books	0.5047	110.23	110.23	106.28	+ 0.00	+ 3.72
81 Newspapers	0.0230	161.68	161.68	161.68	+ 0.00	+ 0.00
82 Stationery	0.3724	130.53	130.12	126.22	+ 0.32	+ 3.41
Education	2.1342	133.48	133.48	130.20	+ 0.00	+ 2.52
83 Education	2.1342	133.48	133.48	130.20	+ 0.00	+ 2.52
Restaurants and hotels	6.1895	132.76	132.31	120.22	+ 0.34	+ 10.43
84 Readymade Food	3.8001	137.34	136.61	123.71	+ 0.53	+ 11.02
85 Marriage Hall Charges	2.2525	126.93	126.93	115.47	+ 0.00	+ 9.92
86 Accommodation Services	0.1369	101.59	101.59	101.59	+ 0.00	+ 0.00
Misc. goods and services	5.0174	137.06	135.89	121.03	+ 0.86	+ 13.24
87 Personal Grooming Services	1.5363	137.45	137.45	123.57	+ 0.00	+ 11.23
88 Appliances/Articles/Products	2.2746	120.23	119.89	111.77	+ 0.28	+ 7.57
89 Personal Effects n.e.c.	1.2065	168.30	164.08	135.24	+ 2.57	+ 24.45

Annexure C: Wholesale Price Indices by Major Groups & Commodities

(2015-16=100)

Item and Specification	Weight	Index Numbers			% Change in Apr 2020 over		
		Apr 20	Mar 20	Apr 19	Mar 2020	Apr 2019	
General	100.0000	139.12	142.01	132.60	-	2.04	+ 4.92
Agriculture Forestry & Fisher	25.7674	138.42	140.18	129.45	-	1.26	+ 6.93
001 Wheat	0.6297	119.47	125.55	101.89	-	4.84	+ 17.25
002 Maize	0.6764	156.51	147.89	131.46	+	5.83	+ 19.06
003 Rice	2.4413	148.39	144.89	136.79	+	2.42	+ 8.48
004 Sorghum / Jowar	0.0214	178.75	171.84	154.60	+	4.02	+ 15.62
005 Millet / Bajra	0.0374	121.93	120.56	129.10	+	1.14	- 5.55
006 Vegetables	1.2441	134.61	158.24	169.77	-	14.93	- 20.71
007 Fresh Fruits	1.5144	148.75	142.80	153.60	+	4.17	- 3.16
008 Dry Fruits	0.2478	127.34	127.06	118.64	+	0.22	+ 7.33
009 Cotton Seeds	1.1511	132.02	134.14	97.11	-	1.58	+ 35.95
010 Other Oil Seeds	0.0722	134.06	133.88	112.07	+	0.13	+ 19.62
011 Edible Roots / Potatoes	0.2540	204.16	234.19	87.23	-	12.82	+ 134.0
012 Stimulant & Spice Crops	0.1634	273.73	285.76	149.10	-	4.21	+ 83.59
013 Pulses	0.4901	138.08	119.57	101.17	+	15.48	+ 36.48
014 Sugar Crops	1.0725	121.83	114.58	112.02	+	6.33	+ 8.76
015 Fibre Crops	5.3169	172.18	172.18	164.26	+	0.00	+ 4.82
016 Unmanufactured Tobacco	0.0742	182.08	182.01	150.66	+	0.04	+ 20.85
017 Poultry	0.5633	96.42	115.56	135.05	-	16.56	- 28.60
018 Raw Milk from Bovine Animals	7.0279	112.89	117.93	108.48	-	4.27	+ 4.07
019 Eggs	0.5034	129.16	117.75	89.96	+	9.69	+ 43.57
020 Raw Animal Materials / Wool	0.0351	105.33	105.33	106.59	+	0.00	- 1.18
021 Hides, Skins & Fur Skins, Raw	0.4834	38.67	38.67	45.01	+	0.00	- 14.09
022 Fuel Wood in Logs	0.0179	115.92	115.76	107.10	+	0.14	+ 8.24
023 Fish Live Fresh or Chilled	1.7295	155.00	155.00	136.12	+	0.00	+ 13.87
Ores/Minerals, Elec., Gas & W	12.0069	161.67	162.56	134.65	-	0.55	+ 20.07
024 Coal not Agglomerated	0.7508	82.17	82.17	82.17	+	0.00	+ 0.00
025 Natural Gas Liquified	5.7065	196.04	197.99	151.72	-	0.98	+ 29.21
026 Salt & Pure Sodium Chloride	0.0584	161.99	154.99	150.56	+	4.52	+ 7.59
027 Electrical Energy	5.4912	136.82	136.82	123.90	+	0.00	+ 10.43
Food, Beverages, Tobacco, Textil	31.1122	135.12	133.66	124.65	+	1.09	+ 8.40
Food Products, Beverages &	20.0718	131.89	129.62	117.14	+	1.75	+ 12.59
028 Meat of Animals	3.4559	146.37	140.52	126.02	+	4.16	+ 16.15
029 Vegetables & Fruit Juice	0.0058	112.76	112.76	118.92	+	0.00	- 5.18
030 Dried Fruits & Nuts	0.1733	157.54	159.07	143.98	-	0.96	+ 9.42
031 Fruit Juices	0.3880	118.62	118.10	109.89	+	0.44	+ 7.94
032 Vegetable Oils Refined	1.9242	123.25	123.13	114.46	+	0.10	+ 7.68
033 Vegetable Ghee	1.5632	149.54	147.94	119.31	+	1.08	+ 25.34
034 Oil Cakes	0.9611	140.10	140.29	120.76	-	0.14	+ 16.02
035 Processed Liquid Milk	4.4437	134.03	128.78	125.68	+	4.08	+ 6.64
036 Milk & Cream in Solid Form	0.0316	124.83	124.18	111.31	+	0.52	+ 12.15
037 Ice Cream	0.0047	117.05	117.05	106.46	+	0.00	+ 9.95
038 Dairy Products N.E.C	0.0117	130.52	130.42	124.37	+	0.08	+ 4.94
039 Wheat Flour	2.3034	118.60	120.48	101.93	-	1.56	+ 16.35
040 Other Cereal Flour	0.0604	135.40	120.85	105.47	+	12.04	+ 28.38
041 Sugar Refined	1.7975	130.39	129.00	104.82	+	1.08	+ 24.39
042 Chocolate	0.0139	81.57	81.57	66.51	+	0.00	+ 22.64
043 Sugar Confectionary	0.0738	115.50	115.50	111.69	+	0.00	+ 3.41
044 Coffee & Tea	0.7303	127.71	127.71	116.64	+	0.00	+ 9.49
045 Spices	0.1449	144.50	142.71	139.85	+	1.25	+ 3.32
046 Other Food Products	0.0336	112.35	112.32	109.29	+	0.03	+ 2.80
047 Mineral Water	0.0207	122.54	122.47	116.02	+	0.06	+ 5.62
048 Beverages	0.6303	125.12	125.01	118.98	+	0.09	+ 5.16
049 Tobacco Products	1.2998	104.23	104.23	104.23	+	0.00	+ 0.00
Textiles & Apparels	10.3289	142.59	142.59	140.23	+	0.00	+ 1.68
050 Cotton Yarn	5.2491	164.84	164.84	165.04	+	0.00	- 0.12
051 Nylon Yarn	0.1719	95.24	95.24	95.24	+	0.00	+ 0.00
052 Blended Yarn	0.1689	120.22	120.22	118.22	+	0.00	+ 1.69
053 Woven Fabrics	0.0128	135.54	135.54	121.08	+	0.00	+ 11.94
054 Cotton Fabrics	0.6343	118.29	118.29	107.29	+	0.00	+ 10.25
055 Other Fabrics	1.1016	112.30	112.30	110.34	+	0.00	+ 1.78
056 Silk & Reyon Fabrics	0.7350	117.76	117.76	112.65	+	0.00	+ 4.54
057 Towels	0.1235	117.41	117.41	110.24	+	0.00	+ 6.50
058 Blankets	0.0029	96.44	96.44	95.81	+	0.00	+ 0.66
059 Bed Sheets	0.0913	112.64	112.64	107.31	+	0.00	+ 4.97

Annexure C: Wholesale Price Indices by Major Groups & Commodities

(2015-16=100)

Item and Specification	Weight	Index Numbers			% Change in Apr 2020 over		
		Apr 20	Mar 20	Apr 19	Mar 2020	Apr 2019	
060 Quilts	0.0019	109.35	109.35	110.22	+	0.00	- 0.79
061 Woolen Carpets	0.0383	137.01	137.01	125.43	+	0.00	+ 9.23
062 Synthetic Carpets	0.0566	115.72	115.72	104.50	+	0.00	+ 10.74
063 Hosiery Products	0.8832	121.90	121.90	121.45	+	0.00	+ 0.37
064 Readymade Garments	1.0576	131.52	131.52	122.85	+	0.00	+ 7.06
Leather Products	0.7115	117.90	117.90	110.18	+	0.00	+ 7.01
065 Leather Without Hair	0.2973	105.65	105.65	105.65	+	0.00	+ 0.00
066 Other Leather N.E.C	0.2567	111.77	111.77	106.90	+	0.00	+ 4.56
067 Footwears	0.1575	151.00	151.00	124.07	+	0.00	+ 21.71
Other Transportable Goods	22.3979	134.95	147.44	152.20	-	8.47	- 11.33
068 Timber	0.0165	111.96	111.96	111.17	+	0.00	+ 0.71
069 Printing Paper	0.4279	130.70	130.70	107.74	+	0.00	+ 21.31
070 Hard Board	0.1579	146.50	146.50	146.50	+	0.00	+ 0.00
071 Motor Spirit	1.6268	135.53	151.96	139.24	-	10.81	- 2.66
072 Diesel Oil	5.4849	134.21	158.01	160.90	-	15.06	- 16.59
073 Kerosine Oil	0.2151	151.89	166.64	175.15	-	8.85	- 13.28
074 Furnace Oil	3.2664	181.45	216.02	272.27	-	16.00	- 33.36
075 Mobil Oil	0.7114	122.31	122.31	115.32	+	0.00	+ 6.06
076 Chemicals	1.7720	129.60	129.60	120.29	+	0.00	+ 7.74
077 Dyeing Material	0.1539	146.16	146.16	107.21	+	0.00	+ 36.33
078 Fertilizers	2.8657	95.02	97.35	100.93	-	2.39	- 5.86
079 Pesticides	0.2763	110.91	110.91	105.07	+	0.00	+ 5.56
080 Insecticides	0.1276	111.49	111.49	111.75	+	0.00	- 0.23
081 Paints & Varnishes	0.1916	124.38	124.38	119.14	+	0.00	+ 4.40
082 Medicines	1.1428	145.46	145.37	121.04	+	0.06	+ 20.18
083 Soaps & Detergents	0.8168	111.63	111.63	111.01	+	0.00	+ 0.56
084 Auto Tyres	0.2703	121.54	121.54	110.55	+	0.00	+ 9.94
085 Plastic Products	0.4550	108.16	108.16	105.89	+	0.00	+ 2.14
086 Glass sheets	0.2089	145.21	145.21	140.04	+	0.00	+ 3.69
087 Other Glass Articles	0.1635	132.52	132.52	121.45	+	0.00	+ 9.11
088 Ceramics & Sanitary Fixture	0.0244	123.86	123.86	116.84	+	0.00	+ 6.01
089 Bricks, Blocks & Tiles	0.1566	119.43	119.43	106.32	+	0.00	+ 12.33
090 Cement	1.8145	114.13	114.13	111.37	+	0.00	+ 2.48
091 Bed Foam	0.0006	145.73	145.73	111.49	+	0.00	+ 30.71
092 Matches	0.0505	1170.1	1170.1	1127.3	+	0.00	+ 3.79
Metal Product, Machinery & Eq	8.7156	135.13	134.90	117.13	+	0.17	+ 15.37
093 Steel Bar & Sheets	1.4615	158.57	157.23	136.70	+	0.85	+ 16.00
094 Pipe Fittings	0.0780	141.32	141.32	121.94	+	0.00	+ 15.89
095 Steel Products	0.3879	133.35	133.35	118.79	+	0.00	+ 12.26
096 Engines & Motors	0.0046	107.29	107.29	107.29	+	0.00	+ 0.00
097 Vacuum Pumps	0.0155	107.56	107.56	107.56	+	0.00	+ 0.00
098 Air Conditioners	0.0049	112.46	112.46	108.94	+	0.00	+ 3.23
099 Cultivators	0.0551	103.75	103.75	87.11	+	0.00	+ 19.10
100 Chuff Cutter	0.1293	107.14	107.14	102.86	+	0.00	+ 4.16
101 Tractors	0.0028	121.30	109.22	109.22	+	11.06	+ 11.06
102 Lathe Machines	0.0525	203.64	203.64	144.32	+	0.00	+ 41.10
103 Concrete Mixture	0.0107	100.00	100.00	100.00	+	0.00	+ 0.00
104 Fridge, WashM, SewM, Fans, Iron	1.1645	151.07	151.07	128.18	+	0.00	+ 17.86
105 Electric Wires	0.0912	125.73	125.73	118.08	+	0.00	+ 6.48
106 Lighting Equipments	1.4431	116.71	116.71	107.23	+	0.00	+ 8.84
107 Radio & Television	0.1843	100.59	100.59	96.80	+	0.00	+ 3.92
108 Motor Vehicles	0.0244	156.02	156.02	131.70	+	0.00	+ 18.47
109 Motorcycles	0.2570	120.09	120.09	116.80	+	0.00	+ 2.82
110 Bicycles	3.3483	131.36	131.36	110.47	+	0.00	+ 18.91