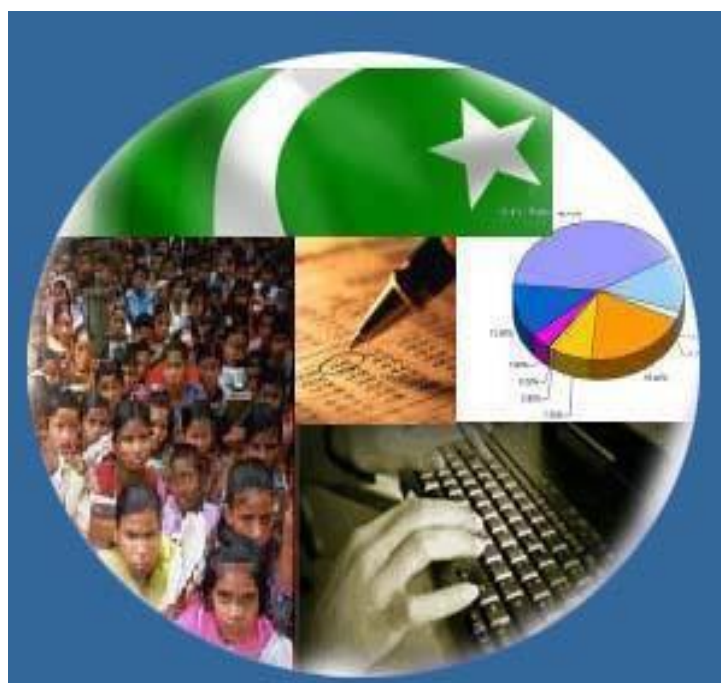




Monthly Review on Price Indices



July, 2020
(Base Year 2015-16)

Government of Pakistan
Ministry of Planning, Development & Special Initiatives
Pakistan Bureau of Statistics
Islamabad

Inflation in Brief

1. **CPI inflation General**, increased by 9.3% on year-on-year basis in July 2020 as compared to an increase of 8.6% in the previous month and 8.4% in July 2019. On month-on-month basis, it increased by 2.5% in July 2020 as compared to an increase of 0.8% in the previous month and an increase of 1.8% in July 2019.
2. **CPI inflation Urban**, increased by 7.8% on year-on-year basis in July 2020 as compared to an increase of 7.6% in the previous month and 8.7% in July 2019. On month-on-month basis, it increased by 2.2% in July 2020 as compared to an increase of 0.7% in the previous month and an increase of 2.0% in July 2019.
3. **CPI inflation Rural**, increased by 11.6% on year-on-year basis in July 2020 as compared to an increase of 10.0% in the previous month and 7.9% in July 2019. On month-on-month basis, it increased by 3.0% in July 2020 as compared to an increase of 1.0% in the previous month and an increase of 1.6% in July 2019.
4. **SPI inflation** on YoY increased by 13.5% in July 2020 as compared to an increase of 11.5% a month earlier and an increase of 8.9% in July 2019. On MoM basis, it increased by 2.8% in July 2020 as compared to an increase of 1.4% a month earlier and an increase of 1.0% in July 2019.
5. **WPI inflation** on YoY basis increased by 3.2% in July 2020 as compared to an increase of 0.9% a month earlier and an increase of 13.3% in July 2019. WPI inflation on MoM basis increased by 5.4% in July 2020 as compared to a decrease of 0.3% a month earlier and an increase of 3.1% in corresponding month of last year i.e. July 2019.
6. Figures 1 and 2 show graphically the yearly data of Table 1.a for Urban and Rural CPI while Table 1.1 shows "Period Average" and "YoY" percent changes in indices of three years.

Table 1.a General Inflation (%) (Base 2015-16)																			
PERIOD	CPI														SPI**		WPI		
	General						Food				Non-Food								
	National		Urban		Rural		Urban		Rural		Urban		Rural						
	YoY	MoM	YoY	MoM	YoY	MoM	YoY	MoM	YoY	MoM	YoY	MoM	YoY	MoM	YoY	MoM	YoY	MoM	
Jan-19	5.6	0.3	6.2	0.4	4.6	0.0	2.6	0.3	1.8	0.0	8.2	0.5	7.0	0.0	3.4	0.4	12.6	-0.8	
Feb-19	6.8	0.9	7.2	0.9	6.0	0.9	5.9	2.3	5.2	1.7	8.0	0.1	6.7	0.2	7.2	2.4	13.9	1.6	
Mar-19	8.6	2.0	8.9	1.9	8.2	2.2	8.8	2.5	9.3	3.3	9.0	1.5	7.3	1.3	10.5	2.1	16.6	2.2	
Apr-19	8.3	0.7	8.4	0.8	8.1	0.6	8.3	1.3	9.3	0.6	8.4	0.6	7.2	0.6	10.0	0.5	17.2	2.0	
June-19	8.4	0.6	8.5	0.7	8.3	0.5	9.0	1.3	9.7	0.6	8.3	0.3	7.1	0.4	9.9	0.6	16.5	1.2	
Jun-19	8.0	0.5	8.1	0.3	7.9	0.7	7.5	-0.3	9.1	0.7	8.4	0.7	7.0	0.7	9.3	0.9	14.0	0.2	
Jul-19	8.4	1.8	8.7	2.0	7.9	1.6	7.9	1.0	9.3	1.7	9.2	2.5	6.8	1.5	8.9	1.0	13.3	3.1	
Aug-19	10.5	1.6	10.6	1.5	10.3	1.9	11.9	3.1	12.6	2.9	9.9	0.5	8.4	1.1	12.1	2.7	14.1	1.2	
Sep-19	11.4	0.8	11.6	0.7	11.1	0.8	15.0	2.0	15.0	1.8	9.7	0.0	8.0	0.0	14.7	1.9	15.9	0.1	
Oct-19	11.0	1.8	10.9	1.6	11.3	2.2	13.7	1.4	14.6	2.6	9.3	1.7	8.7	1.8	15.1	2.7	13.3	2.0	
Nov-19	12.7	1.3	12.1	1.0	13.6	1.9	16.6	2.4	19.3	3.4	9.6	0.2	9.0	0.6	20.2	3.7	11.2	-0.8	
Dec-19	12.6	-0.3	12.0	-0.4	13.6	-0.3	16.7	-1.7	19.7	-1.1	9.5	0.4	8.8	0.4	18.1	-2.0	12.4	-0.3	
Jan-20	14.6	2.0	13.4	1.7	16.3	2.4	19.5	2.7	23.8	3.4	10.2	1.1	10.5	1.5	18.3	0.5	15.4	1.8	
Feb-20	12.4	-1.0	11.2	-1.1	14.2	-1.0	15.2	-1.4	19.7	-1.6	9.1	-0.9	9.8	-0.4	14.5	-0.8	12.7	-0.7	
Mar-20	10.2	0.0	9.3	0.1	11.7	-0.1	13.0	0.6	15.5	-0.3	7.3	-0.1	8.5	0.1	11.8	-0.3	9.3	-0.9	
Apr-20	8.5	-0.8	7.7	-0.7	9.8	-1.1	10.4	-1.0	12.9	-1.7	6.2	-0.5	7.4	-0.5	9.3	-1.8	4.9	-2.0	
May-20	8.2	0.3	7.3	0.3	9.7	0.3	10.6	1.5	13.7	1.4	5.4	-0.4	6.4	-0.5	11.0	2.2	1.5	-2.1	
Jun-20	8.6	0.8	7.6	0.7	10.0	1.0	12.9	1.8	15.2	2.0	4.7	0.0	5.8	0.1	11.5	1.4	0.9	-0.3	
July-20	9.3	2.5	7.8	2.2	11.6	3.0	15.1	3.0	17.8	4.0	3.9	1.7	6.5	2.2	13.7	3.0	3.2	5.4	

** SPI for quintile 1. Digits 0.0* are due to rounding off.

Core inflation (NFNE)

7. Measured by **non-food non-energy Urban CPI** increased by 5.3% on (YoY) basis in July 2020 as compared to an increase of 6.5% in the previous month and 8.2% in July 2019. On (MoM) basis, it increased by 0.6% in July 2020 as compared to increase of 0.4% in previous month, and an increase of 1.8% in corresponding month of last year i.e. July 2019.
8. Measured by **non-food non-energy Rural CPI** increased by 7.8% on (YoY) basis in July 2020 as compared to an increase of 8.8% in the previous month and 7.8% in July 2019. On (MoM) basis, it increased by 1.1% in July 2020 as compared to an increase of 0.7% in previous month, and an increase of 2.0% in corresponding month of last year i.e. July 2019.

Core inflation (Trimmed)

9. Measured by 20% **weighted trimmed mean Urban CPI** increased by 6.7% on (YoY) basis in July 2020 as compared to 7.4% in the previous month and by 7.8% in July 2019. On (MoM) basis, it increased by 0.9% in July 2020 as compared to an increase of 0.4% in the previous month and an increase of 1.4% in corresponding month of last year i.e. July 2019.
10. Measured by 20% **weighted trimmed mean Rural CPI** increased by 9.8% on (YoY) basis in July 2020 as compared to 9.9% in the previous month and by 7.4% in July 2019. On (MoM) basis, it increased by 1.5% in July 2020 as compared to an increase of 0.9% in the previous month and an increase of 1.6% in corresponding month of last year i.e. July 2019.

Table 1.b Core Inflation (%) (Base 2015-16)

Period	NFNE				Trimmed			
	Urban		Rural		Urban		Rural	
	YoY	MoM	YoY	MoM	YoY	MoM	YoY	MoM
Jun-19	7.3	0.2	6.7	0.3	7.3	0.4	7.2	0.7
Jul-19	8.2	1.8	7.8	2.0	7.8	1.4	7.4	1.6
Aug-19	8.5	0.4	8.8	1.0	8.5	0.6	8.7	1.2
Sep-19	8.4	0.4	8.8	0.3	9.3	0.6	9.6	0.6
Oct-19	7.7	0.5	8.6	0.7	8.9	0.5	9.4	0.7
Nov-19	7.5	0.3	8.4	0.5	9.5	0.4	10.7	0.7
Dec-19	7.5	0.4	8.1	0.3	9.6	0.2	10.8	0.3
Jan-20	7.9	1.1	9.0	1.0	10.3	1.2	12.7	1.9
Feb-20	8.0	0.2	9.4	0.5	9.7	0.1	12.8	0.6
Mar-20	7.4	0.3	9.4	0.6	8.7	0.3	11.4	0.1
Apr-20	6.4	0.2	8.5	0.3	6.7	-0.2	9.3	-0.6
May-20	6.3	0.4	8.4	0.4	6.7	0.4	8.9	0.5
Jun-20	6.5	0.4	8.8	0.7	7.4	0.4	9.9	0.9
Jul-20	5.3	0.6	7.8	1.1	6.7	0.9	9.8	1.5

Table 1.1 Period Average and YoY % Change

INDEX	Average July- July % changes			July over July % changes		
	2020-2021	2019-2020	2018-2019	2020	2019	2018
CPI (National)	9.30	8.37	6.66	9.30	8.38	6.66
CPI(Urban)	7.83	8.71	6.71	7.83	8.71	6.71
CPI(Rural)	11.57	7.87	6.59	11.57	7.87	6.59
SPI	13.49	8.90	4.21	13.49	8.90	4.21
WPI	3.23	13.28	16.30	3.23	13.28	16.30

Figure 1: UCPI Inflation YoY, Special Indices

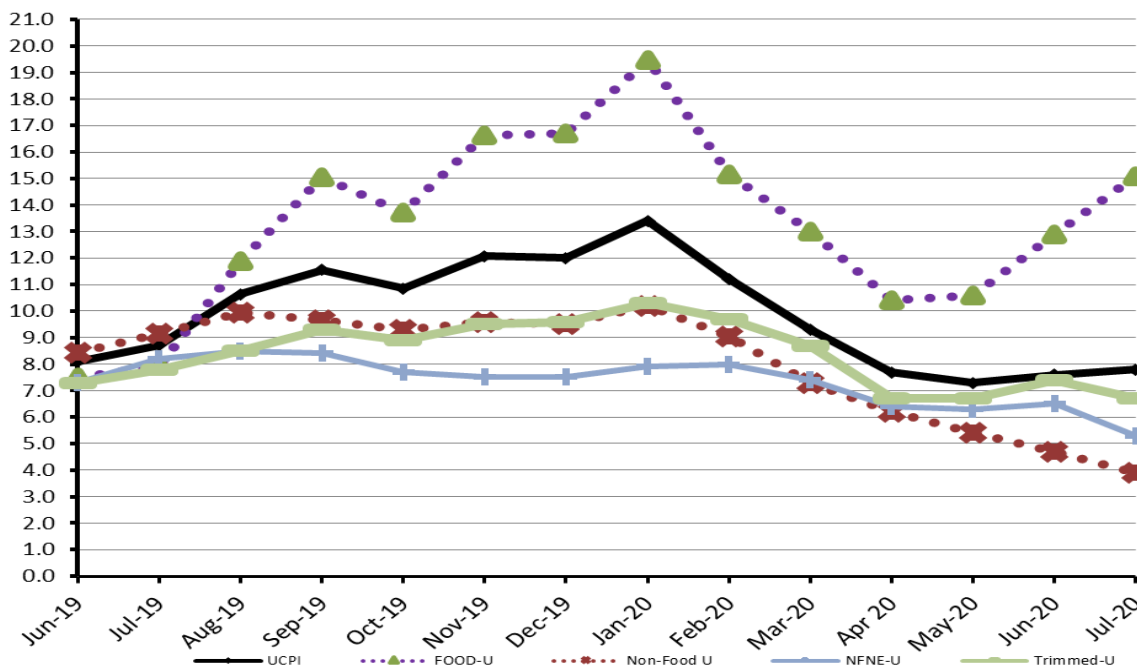


Figure 2: RCPI Inflation YoY, Special Indices

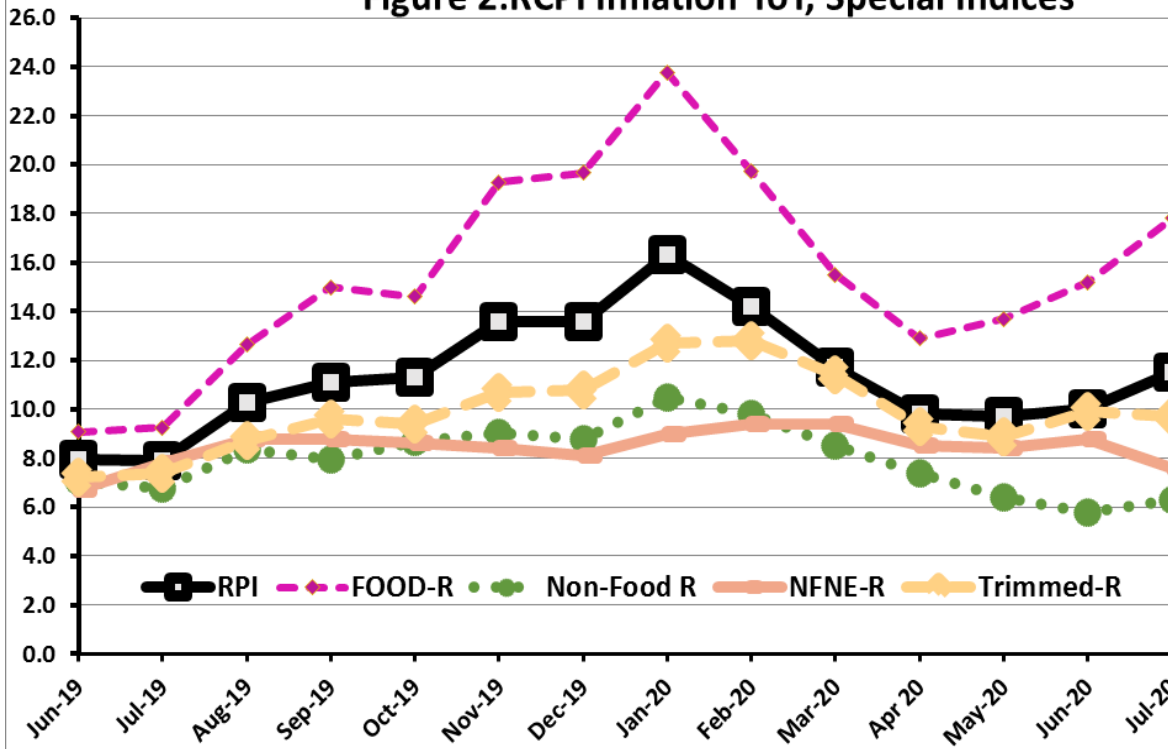


Figure 3: UCPI Inflation MoM, Special Indices

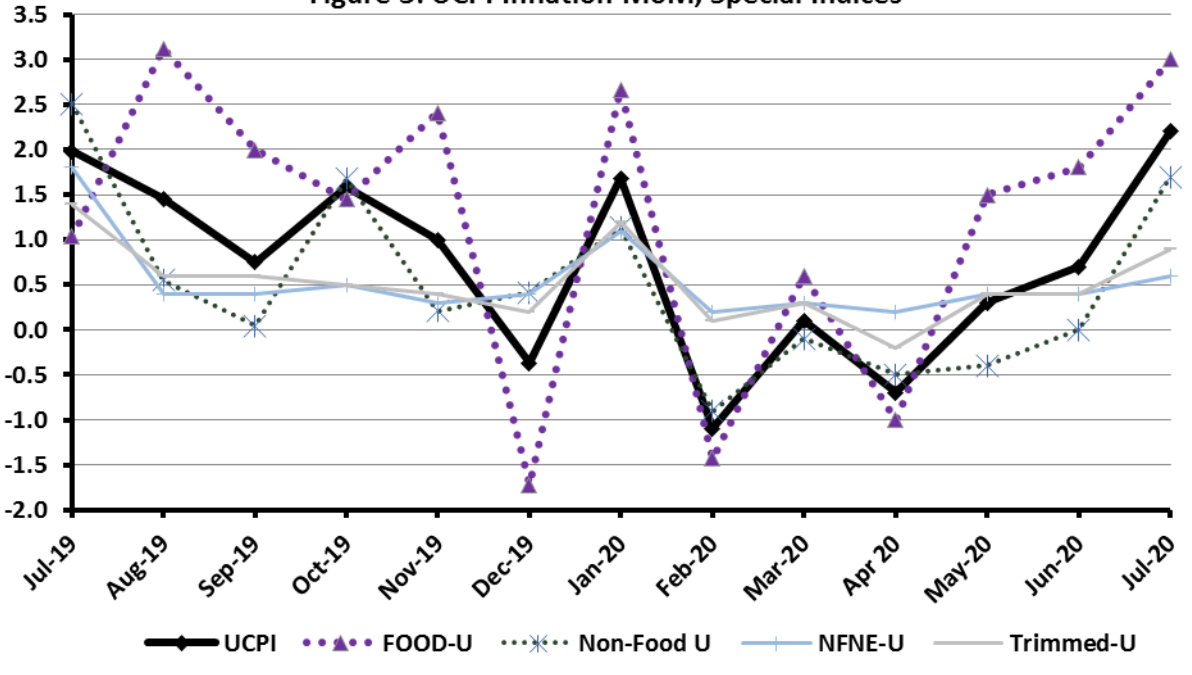


Figure 4: RPI Inflation MoM, Special Indices

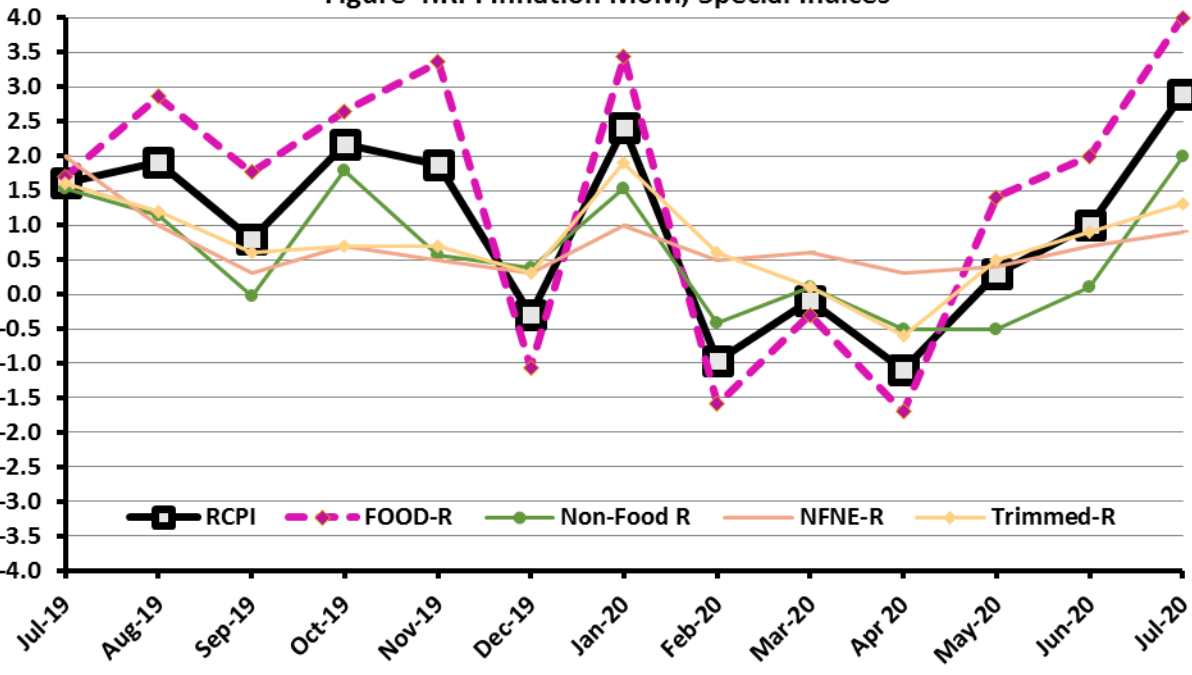


Figure 5: CPI Y.o.Y (National, Urban, Rural)

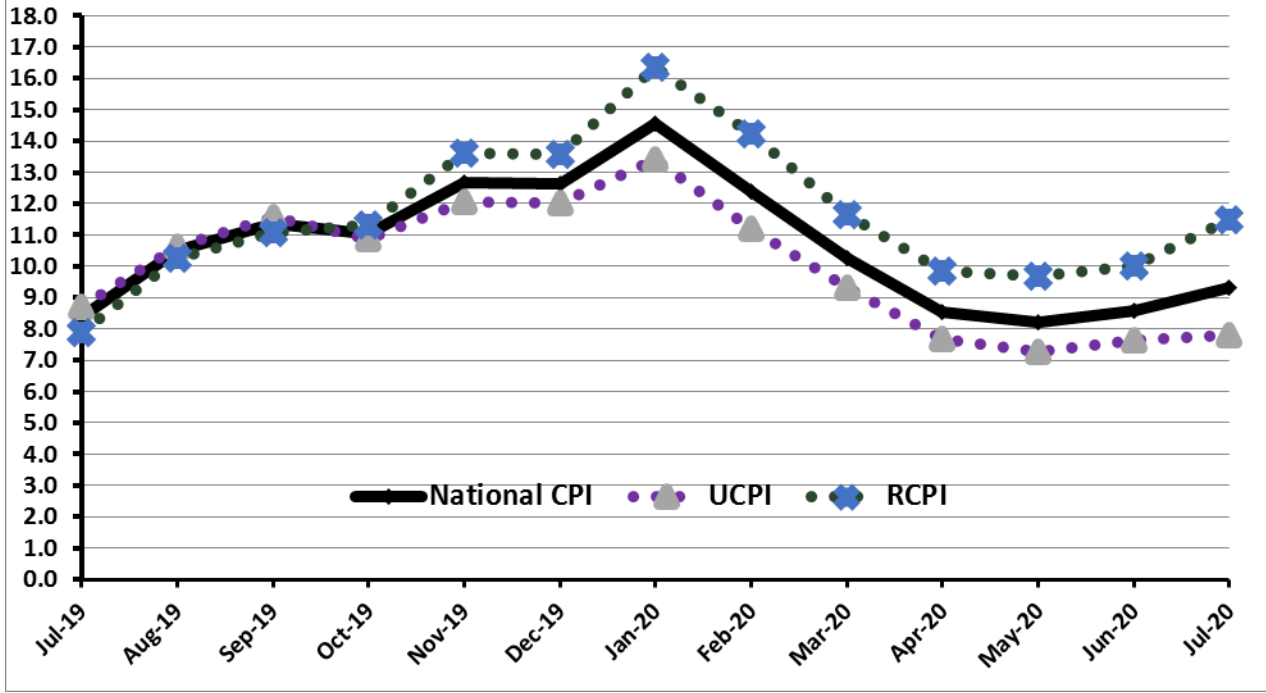
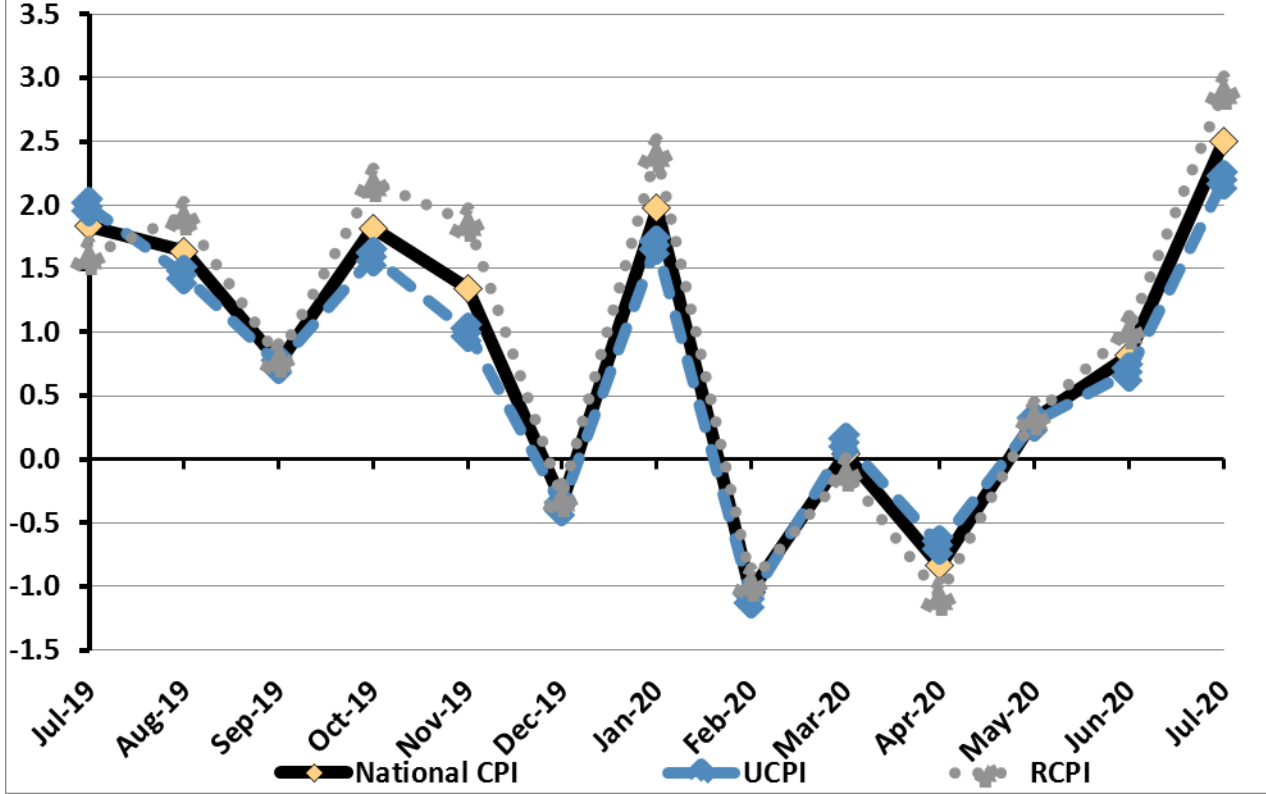


Figure 6: CPI M.o.M (National, Urban, Rural)



I. National Consumer Price Index (N-CPI)

The **National Consumer Price Index** of July 2020 is increased by **2.50%** over July 2020 and increased by **9.30%** over corresponding month of the last year i.e. July 2019.

Table 1 : Consumer Price Index (National) by Group of Commodities and Services (Base 2015-16)

No	Group	Group Weight (%)	Indices			% Change July 2020 Over		Impact (In % points) July 2020 Over	
			July 2020	June 2020	July 2019	June 2020	July 2019	June 2020	July 2019
	General	100.00	135.38	132.08	123.86	2.50	9.30	2.50	9.30
1.	Food & Non-alcoholic Bev.	34.58	140.11	134.90	118.95	3.86	17.79	1.36	5.91
	<i>Non-perishable Food Items</i>	29.60	137.39	134.89	117.55	1.85	16.87	0.56	4.74
	<i>Perishable Food Items</i>	4.99	156.28	134.98	127.23	15.78	22.83	0.80	1.17
2.	Alcoholic Bev. & Tobacco	1.02	140.29	137.90	133.58	1.73	5.02	0.02	0.06
3.	Clothing & Footwear	8.60	136.66	135.64	123.86	0.75	10.33	0.07	0.89
4.	Housing, Water, Electricity, Gas & Fuels	23.63	130.14	128.43	124.95	1.34	4.16	0.31	0.99
5.	Furnishing & Household Equipment Maintenance	4.10	130.44	129.33	121.01	0.86	7.79	0.03	0.31
6.	Health	2.79	142.09	140.67	131.80	1.01	7.81	0.03	0.23
7.	Transport	5.91	134.75	122.95	141.03	9.60	-4.45	0.53	-0.30
8.	Communication	2.21	106.96	106.96	106.59	0.00	0.35	0.00	0.01
9.	Recreation & Culture	1.59	121.01	119.96	116.56	0.87	3.82	0.01	0.06
10.	Education	3.79	142.40	142.40	140.88	0.00	1.08	0.00	0.05
11.	Restaurants & Hotels	6.92	132.60	131.81	123.31	0.59	7.53	0.04	0.52
12.	Miscellaneous	4.87	141.05	138.30	126.23	1.98	11.74	0.10	0.58

II. Urban Consumer Price Index (UCPI)

The **Urban Consumer Price Index** of July 2020 is increased by **2.15%** over July 2020 and increased by **7.83%** over corresponding month of the last year i.e. July 2019.

Table 2: Consumer Price Index (Urban) by Group of Commodities and Services (Base 2015-16)

No	Group	Group Weight (%)	Indices			% Change July 2020 Over		Impact (In % points) July 2020 Over	
			July 2020	June 2020	July 2019	June 2020	July 2019	June 2020	July 2019
	General	100.00	134.73	131.89	124.95	2.15	7.83	2.15	7.83
1.	Food & Non-alcoholic Bev.	30.42	138.89	134.23	118.77	3.47	16.94	1.07	4.90
	Non-perishable Food Items	25.97	135.81	133.77	116.87	1.53	16.21	0.40	3.94
	Perishable Food Items	4.46	156.84	136.92	129.88	14.55	20.76	0.67	0.96
2.	Alcoholic Bev.& Tobacco	0.85	148.36	145.10	141.67	2.25	4.72	0.02	0.05
3.	Clothing & Footwear	8.01	132.97	132.50	121.60	0.35	9.35	0.03	0.73
4.	Housing, Water, Electricity, Gas & Fuels	27.03	131.76	130.09	127.20	1.28	3.58	0.34	0.99
5.	Furnishing & Household Equipment Maintenance	4.09	130.01	129.35	122.28	0.51	6.32	0.02	0.25
6.	Health	2.31	141.55	140.28	133.63	0.91	5.93	0.02	0.15
7.	Transport	6.14	134.88	123.36	141.72	9.34	-4.83	0.54	-0.34
8.	Communication	2.35	108.22	108.22	107.80	0.00	0.39	0.00	0.01
9.	Recreation & Culture	1.73	118.86	118.29	115.31	0.48	3.08	0.01	0.05
10.	Education	4.88	144.98	144.98	143.47	0.00	1.05	0.00	0.06
11.	Restaurants & Hotels	7.41	130.92	130.52	122.67	0.31	6.73	0.02	0.49
12.	Miscellaneous	4.77	140.40	138.14	127.23	1.64	10.35	0.08	0.50

Main contributors to month-on-month and year-on-year percentage changes are given below and detail is given in Annexure A.

1. MONTH-ON-MONTH Top few commodities which varied from previous month are given below: -

Food Items

Increased: Tomatoes(179.19%), vegetables(23.84%), Onions(16.61%), Eggs (10.82%), Spices(7.57%), Wheat(7.42%), Potatoes(4.58%), Meat(3.97%), Sugar(3.82%), Beans(3.07%), Cigarettes (2.88%), Chicken (2.6%), Milk products(1.74%) and Milk (1.37%)

Decreased: Pulse moong (10.72%), Pulse masoor(6.27%), fruits(6.24%), Pulse mash(2.71%), Gram whohe (2.7%), Pulse gram(2.39%), Wheat flour (1.51%) and Cooking oil(1.34%)

Non-food Items

Increased: Motor fuel(27.01%), Liquified Hydrocarbons(7.27%), House rent(1.58%) and medicines(1.04%).

Decreased: Transport (7.55%).

2. YEAR-ON-YEAR: Top few commodities which varied from previous year i.e. July 2019 are given below:-

Food Items

Increased: Tomatoes(100.16%), Potatoes(62.98%), Pulse moong (46.25%), Eggs (43.11%), Spices(39.48%), Chicken (36.69%), Pulse mash(35.86%), Beans(34.3%), Wheat(28.52%), Pulse masoor(23.79%), Vegetable ghee(22.29%), Wheat flour (18.52%), vegetables(17.83%), Cooking oil(17.28%), Sugar(16.98%) and Wheat products(15.99%).

Decreased: Onions(19.59%) and Fish(6.22%).

Non-food Items

Increased: Footware (11.36%), Cotton cloth(10.93%) and Dopatta (10.42%).

Decreased: Motor fuel(9.79%), Transport services(3.96%) and Liquified Hydrocarbons(3.65%)

III. Rural Consumer Price Index (RCPI)

The Rural Consumer Price Index of July 2020 is increased by 3.02% over July 2020 and increased by 11.57% over corresponding month of the last year i.e. July 2019.

Table 3: Consumer Price Index (Rural) by Group of Commodities and Services (Base 2015-16)

No	Group	Group Weight (%)	Indices			% Change July 2020 Over		Impact (In % points) July 2020 Over	
			July 2020	June 2020	July 2019	June 2020	July 2019	June 2020	July 2019
	General	100.00	136.36	132.36	122.22	3.02	11.57	3.02	11.57
1.	Food & Non-alcoholic Bev.	40.87	141.49	135.66	119.15	4.30	18.75	1.80	7.47
	Non-perishable Food Items	35.08	139.15	136.14	118.32	2.21	17.60	0.80	5.98
	Perishable Food Items	5.79	155.64	132.73	124.16	17.26	25.35	1.00	1.49
2.	Alcoholic Bev.& Tobacco	1.28	132.15	130.65	125.43	1.15	5.36	0.01	0.07
3.	Clothing & Footwear	9.48	141.36	139.64	126.75	1.23	11.53	0.12	1.13
4.	Housing, Water, Electricity, Gas & Fuels	18.49	126.58	124.75	119.99	1.47	5.49	0.26	1.00
5.	Furnishing & Household Equipment Maintenance	4.10	131.08	129.30	119.09	1.38	10.07	0.06	0.40
6.	Health	3.51	142.62	141.06	129.98	1.11	9.72	0.04	0.36
7.	Transport	5.56	134.53	122.26	139.88	10.04	-3.82	0.52	-0.24
8.	Communication	1.99	104.72	104.72	104.43	0.00	0.28	0.00	0.00
9.	Recreation & Culture	1.38	125.09	123.14	118.92	1.58	5.19	0.02	0.07
10.	Education	2.13	133.48	133.48	131.93	0.00	1.17	0.00	0.03
11.	Restaurants & Hotels	6.19	135.62	134.15	124.47	1.10	8.96	0.07	0.56
12.	Miscellaneous	5.02	141.98	138.54	124.79	2.48	13.78	0.13	0.71

Main contributors to month-on-month and year-on-year percentage changes are given below and detail is given in Annexure A.

- MONTH-ON-MONTH** Top few commodities which varied from previous month are given below: -

Food Items

Increased: Tomatoes(241.4%), Onions(25.57%), Vegetables(21.63%), Eggs(13.84%), Wheat(10.84%), Potatoes(5.33%), Sugar(3.67%), Rice(2.96%), Chicken(2.58%), Honey(2.06%), Meat(1.82%), Bakery and Confectionary(1.74%), Wheat Flour(1.73%), Readymade Food(1.72%), Condiments and Spices(1.48%), Beans(1.47%), Milk fresh(1.23%).

Decreased: Pulse Moong(13.42%), Fresh fruits(6.62%), Pulse Gram(4.98%), Besan(4.42%), Pulse Masoor(4.06%), Pulse Mash(4.04%) and Gram Whole(4%).

Non-food Items

Increased: Motor Fuels(29.61%), Plastic Products(3.49%), Text Books(3.05%), Household Equipments(2.47%), Cotton Cloth(2.45%), House Rent(1.7%), Furniture and Furnishing(1.53%), Medical Tests(1.5%), Construction Input Items(1.45%), Stationery(1.35%) and Motor Vehicles(0.8%).

Decreased: Transport Services (5.17%).

- YEAR-ON-YEAR:** Top few commodities which varied from previous year i.e. July 2019 are given below:-

Food Items

Increased: Tomatoes(129.3%), Potatoes(88.13%), Spices(59.59%), Pulse Moong (51.73%), Eggs(41.1%), Pulse Mash(37.07%), Chicken(35.69%), Beans(34.57%), Pulse Masoor (30.77%), Wheat(30.4%), Vegetable ghee(23.06%), Wheat Flour(21.63%), Cooking oil(17.62%), Sugar(16.55%), Vegetables(15.66%), Rice(14.53%), Bakery and Confectionary(11.56%), Beverages(11.31%), Pulse Gram(11.06%), Meat(9.84%), Tea(9.59%), Milk fresh(7.75%), Sweetmeat(6.75%), Cigarettes(5%), Fresh fruits(4.1%) and Gram Whole(1.88%).

Decreased: Onions (20.9%) and Fish (4.21%).

Non-food Items

Increased: Hosiry(17.43%), Cotton Cloth(17.34%), Furniture and Furnishing(12.88%), Solid Fuel(12.34%), Plastic Products(11.63%), Washing Soaps, Detergents and Match Box(10.15%), Medical Tests(9.68%), Footwear (9.42%), Construction Wage Rates(9.28%), Household Textiles(9.17%), Household Equipment (9.05%), Drugs and Medicines(8.73%), Readymade Garments(7.53%), Motor Vehicles Accessories(7.43%), House Rent(4.94%), Hospitals Services(4.58%), Text Books(3.74%), Construction Input Items(3.58%), Motor Vehicles(2.14%), Transport Services(1.36%) and Education(1.17%).

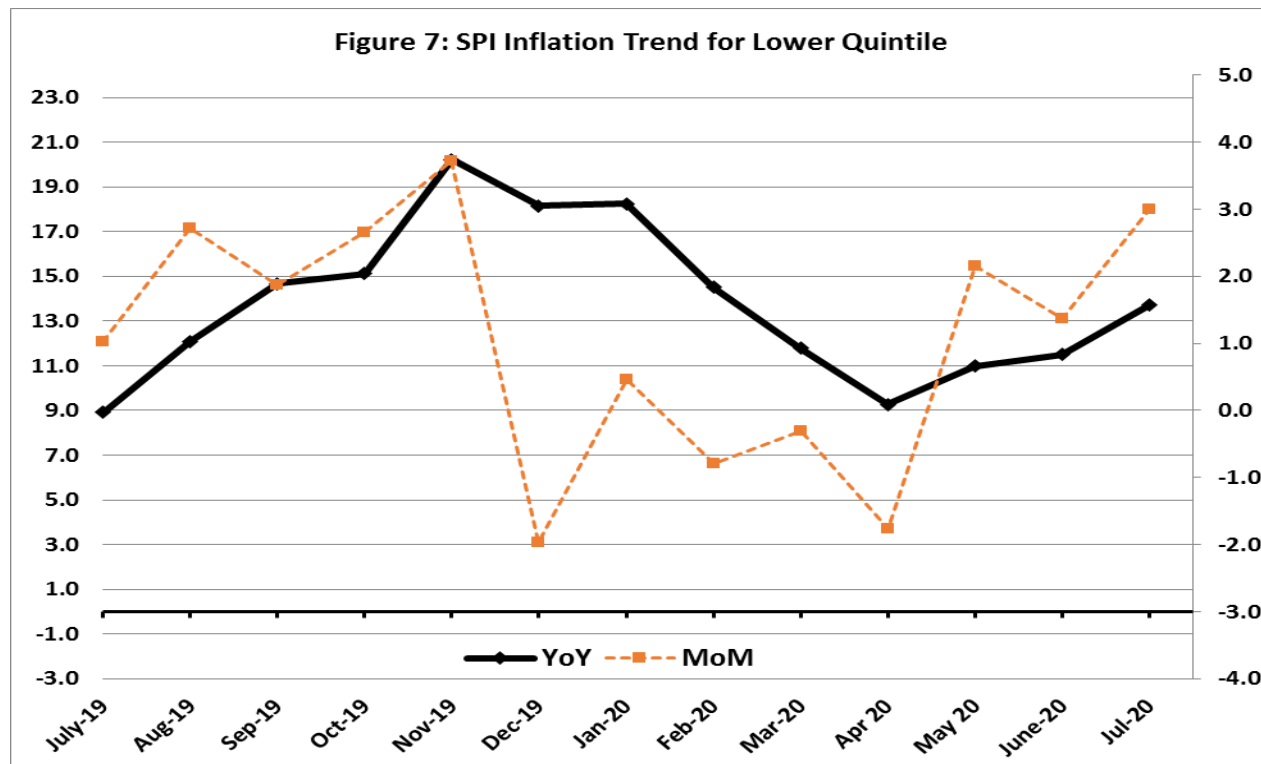
Decreased: Motor Fuels (9.98%), Liquefied Hydrocarbons (4.12%) and Electricity Charges (0.19%).

IV. Sensitive Price Indicator

Quintile-wise percentage changes YoY and MoM are given below in Table 4. The series from July 2019 to July 2020 is also graphed below in Figure 7.

Table 4: Sensitive Price Indicator (Base 2015-16)					
Quintiles	Indices			% Change July 2020 Over	
	July 2020	June 2020	July 2019	June 2020	July 2019
1	139.66	135.55	122.81	3.03	13.72
2	134.23	129.94	118.56	3.30	13.22
3	136.22	131.84	121.28	3.32	12.32
4	133.07	128.40	119.12	3.64	11.71
5	134.34	128.82	123.24	4.29	9.01
Combined	133.50	128.46	120.79	3.92	10.52

Table 4.1 : Weekly Percentage Change of SPI During July-2020				
Quintiles	% Change with Previous week			
	02-07-2020	09-07-2020	16-07-2020	23-07-2020
Quintile 1	0.89	1.27	-0.39	0.43
Combined	2.29	0.98	-0.01	0.21



V. Wholesale Price Index

The Wholesale Price Index for July, 2020 increased by **5.41%** over June 2020. It increased by **3.23%** over the corresponding month of the last year. YoY and MoM movements, from July, 2019 to July, 2020 are also graphed below in Figure 8.

Table 5: Wholesale Price Index by Group of Commodities (Base 2015-16)

No.	Group	Group Weight (%)	Indices			% Change July 2020 Over		Impact (In % points) July 2020 Over	
			July 20	June 20	July 19	June 20	July 19	June 20	July 19
	General	100.00	143.14	135.80	138.66	5.41	3.23	5.41	3.23
1.	Agriculture, Forestry & Fishery Products	25.77	142.06	137.92	128.38	3.00	10.66	0.78	2.54
2.	Ores & Minerals, Electricity, Gas & Water	12.01	161.11	160.96	159.32	0.09	1.12	0.01	0.16
3.	Food Products, Beverages & Tobacco, Textiles, Apparel & Leather Products	31.11	139.64	136.94	126.72	1.97	10.20	0.62	2.90
	i. Food Products, Bev. & Tobacco	137.23	134.55	120.09	1.99	14.27	0.40	2.48	2.18
	ii. Textiles and Apparel	145.76	142.82	140.76	2.06	3.55	0.22	0.37	0.13
	iii. Leather Products	118.88	118.88	110.18	0.00	7.90	0.00	0.04	0.05
4.	Other Transportable Goods except Metal Products, Machinery & Equipment	22.40	138.95	118.26	160.42	17.50	-13.38	3.41	-3.47
5.	Metal Products, Machinery & Equipment	8.72	144.85	135.83	127.30	6.64	13.79	0.58	1.10

Main contributors to month-on-month and year-on-year percentage changes are given below and detail is given in Annexure C.

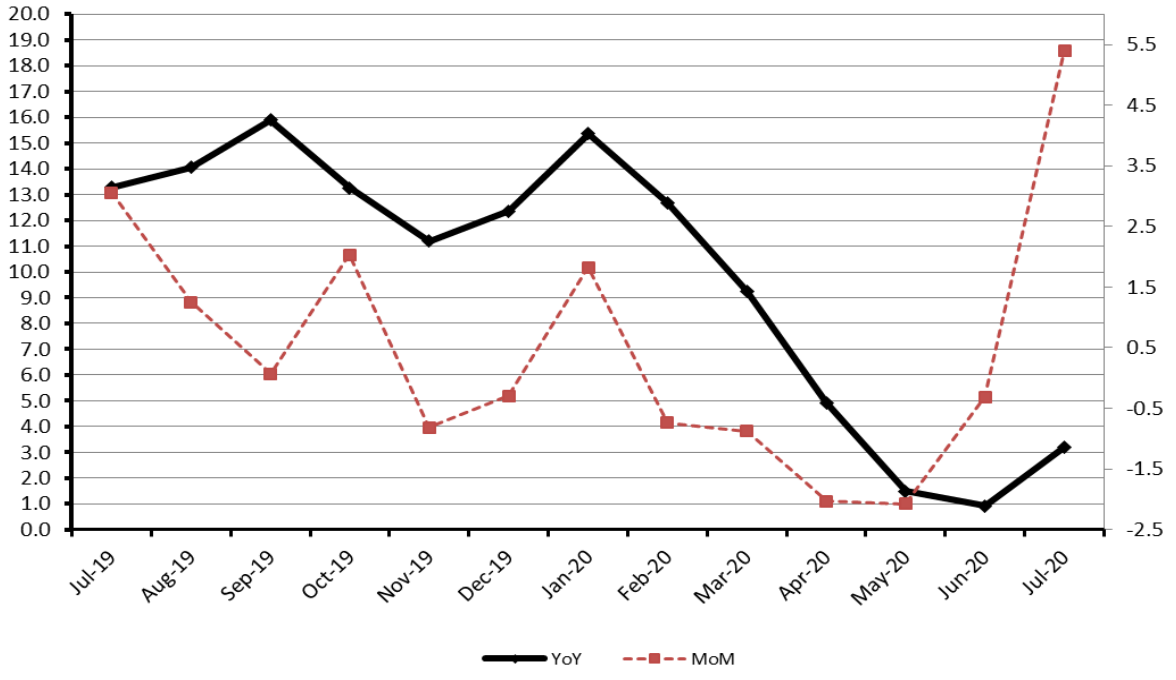
1. MONTH-ON-MONTH Top few commodities which varied from previous month are given below: -

Increased: Kerosine Oil(66.82%), Sugar Confectionary(39.88%), Diesel Oil(37.12%), Motor Spirit(36.13%), Vegetables(33.35%), Pesticides (27.29%), Cotton Fabrics(26.11%), Bicycles(16.51%), Eggs(11.22%), Wheat (8.34%), Paints & Varnishes(7.15%), Potatoes(6.62%), Bricks, Blocks & Tiles(6.42%), Sugar Refined(5.4%), Wheat Flour(3.97%), Spices(3.96%), Cement(3.69%), Air Conditioners(3.1%), Meat of Animals(2.7%), Soaps & Detergents(1.63%), Fresh Fruits(1.04%). **Decreased:** Maize (4.1%), Pulses (3.75%), and Vegetable Ghee (1.69%).

2. YEAR-ON-YEAR Top few commodities which varied from previous year i.e. July, 2019 are given below: -

Increased: Potatoes(78.18%), Spices(71.86%), Eggs(45.44%), Cotton Fabrics(38.36%), Wheat (33.07%), Sugar Confectionary(30.49%), Bicycles(26.93%), Unmanufactured Tobacco(26.58%), Wheat Flour(26.27%), Footwears(21.71%), Vegetables(18.92%), Sugar Refined(18.1%), Meat of Animals(17.82%), Pulses(16.44%), Fresh Fruits(15.85%), Vegetable Ghee(13.19%), Medicines(12.32%), Hosiery Products(11.22%) and Bricks, Blocks & Tiles(7.36%). **Decreased:** Kerosine Oil(39.75%), Diesel Oil(29.68%), Furnace Oil(22.1%), Bajra(13.52%), Motor Spirit(11.72%), Fertilizers(8.15%), Fibre Crops(6.95%) and Maize(1.59%).

Figure 8: WPI Inflation



Annexure A:CPI (Urban) Index Numbers by Commodity Groups & Commodities (2015-16=100)

Item and Specification	Weight	Index Numbers			% Change in Jul 2020 over	
		Jul 20	Jun 20	Jul 19	Jun 2020	Jul 2019
General	100.0000	134.73	131.89	124.95	+ 2.15	+ 7.83
Food and non-alcoholic Bevera	30.4215	138.89	134.23	118.77	+ 3.47	+ 16.94
01 Wheat	0.6120	139.29	129.67	108.38	+ 7.42	+ 28.52
02 Wheat flour	3.0075	128.32	130.29	108.27	- 1.51	+ 18.52
03 Wheat products	0.0936	129.40	127.34	111.56	+ 1.62	+ 15.99
04 Besan	0.0830	117.95	122.51	108.08	- 3.72	+ 9.13
05 Rice	1.1804	135.86	134.64	126.95	+ 0.91	+ 7.02
06 Bakery and confectionary	0.4770	127.15	126.40	114.52	+ 0.59	+ 11.03
07 Nimco	0.1224	129.75	125.99	113.69	+ 2.98	+ 14.13
08 Meat	2.0411	153.62	147.76	135.95	+ 3.97	+ 13.00
09 Chicken	1.3631	141.50	137.92	103.52	+ 2.60	+ 36.69
10 Fish	0.3855	113.60	114.26	121.14	- 0.58	- 6.22
11 Milk fresh	7.1070	125.39	123.69	113.88	+ 1.37	+ 10.11
12 Milk products	0.6407	128.05	125.86	116.53	+ 1.74	+ 9.89
13 Milk powder	0.3106	130.29	130.20	118.54	+ 0.07	+ 9.91
14 Eggs	0.5083	147.06	132.70	102.76	+ 10.82	+ 43.11
15 Butter	0.0932	171.57	170.23	136.49	+ 0.79	+ 25.70
16 Mustard oil	0.0120	126.67	125.68	109.45	+ 0.79	+ 15.73
17 Cooking oil	1.1016	142.88	144.82	121.83	- 1.34	+ 17.28
18 Vegetable ghee	1.0324	148.60	149.51	121.51	- 0.61	+ 22.29
19 Dry fruits	0.3299	130.37	130.03	117.63	+ 0.26	+ 10.83
20 Fresh fruits	1.4363	151.50	161.59	139.86	- 6.24	+ 8.32
21 Pulse masoor	0.1624	103.41	110.33	83.54	- 6.27	+ 23.79
22 Pulse moong	0.1697	153.33	171.75	104.84	- 10.72	+ 46.25
23 Pulse mash	0.1152	101.84	104.68	74.96	- 2.71	+ 35.86
24 Pulse gram	0.1660	115.66	118.49	105.30	- 2.39	+ 9.84
25 Gram whohe	0.0912	125.07	128.54	117.58	- 2.70	+ 6.37
26 Beans	0.0408	148.56	144.13	110.62	+ 3.07	+ 34.30
27 Potatoes	0.4496	241.36	230.80	148.09	+ 4.58	+ <u>62.98</u>
28 Onions	0.5928	97.75	83.83	121.57	+ 16.61	- 19.59
29 Tomatoes	0.3459	198.00	70.92	98.92	+ <u>179.1</u>	+ <u>100.1</u>
					<u>9</u>	<u>6</u>
30 Fresh vegetables	1.5306	143.50	115.88	121.79	+ 23.84	+ 17.83
31 Sugar	1.1130	135.35	130.37	115.70	+ 3.82	+ 16.98
32 Gur	0.0379	137.48	136.49	120.76	+ 0.73	+ 13.85
33 Honey	0.1017	124.39	119.37	113.24	+ 4.21	+ 9.85
34 Sweetmeat	0.3535	143.37	141.24	128.77	+ 1.51	+ 11.34
35 Ice cream	0.1044	133.79	126.91	117.76	+ 5.42	+ 13.61
36 Condiments and Spices	1.3340	188.74	175.46	135.32	+ 7.57	+ 39.48
37 Dessert preparation	0.0419	125.30	125.08	112.18	+ 0.18	+ 11.70
38 Tea	0.8427	140.74	140.74	128.35	+ 0.00	+ 9.65
39 Beverages	0.8906	126.99	126.76	116.59	+ 0.18	+ 8.92
Alcoholic Beverages, Tobacco	0.8540	148.36	145.10	141.67	+ 2.25	+ 4.72
40 Cigarettes	0.7167	139.07	135.18	134.05	+ 2.88	+ 3.74
41 Pan prepared	0.1373	196.90	196.90	181.46	+ 0.00	+ 8.51
Clothing and footwear	8.0096	132.97	132.50	121.60	+ 0.35	+ 9.35
42 Cotton cloth	2.2227	137.01	136.39	123.51	+ 0.45	+ 10.93
43 Woolen cloth	0.8361	128.47	127.10	113.89	+ 1.08	+ 12.80
44 Readymade garments	1.3196	130.49	130.22	125.60	+ 0.21	+ 3.89
45 Woolen readymade garments	0.4307	126.88	126.88	115.81	+ 0.00	+ 9.56
46 Tailoring	1.0741	140.83	140.63	128.73	+ 0.14	+ 9.40
47 Hosiry	0.4070	129.25	128.14	123.04	+ 0.87	+ 5.05
48 Dopatta	0.1713	124.79	124.49	113.01	+ 0.24	+ 10.42
49 Cleaning and laundrying	0.0665	131.67	131.01	124.21	+ 0.50	+ 6.01
50 Footware	1.4816	129.74	129.66	116.51	+ 0.06	+ 11.36
Housing, water, Elec., Gas an	27.0332	131.76	130.09	127.20	+ 1.28	+ 3.58
51 House rent	19.2558	132.08	130.02	126.65	+ 1.58	+ 4.29
52 Construcion input items	0.3765	143.20	143.08	135.46	+ 0.08	+ 5.71
53 Construction wage rates	0.2025	149.55	149.20	141.48	+ 0.23	+ 5.70
54 Water supply	0.5269	143.78	143.78	119.55	+ 0.00	+ 20.27
55 Garbage collection	0.1064	167.30	159.37	145.38	+ 4.98	+ 15.08
56 Electricity charges	4.5562	108.04	108.04	108.25	+ 0.00	- 0.19
57 Gas charges	1.0807	216.94	216.94	216.94	+ 0.00	+ 0.00
58 Liquified Hydrocarbons	0.5064	130.12	121.30	135.05	+ 7.27	- 3.65
59 Solid Fuel	0.4218	114.45	114.44	108.52	+ 0.01	+ 5.46

Annexure A:CPI (Urban) Index Numbers by Commodity Groups & Commodities (2015-16=100)

Item and Specification	Weight	Index Numbers			% Change in Jul 2020 over			
		Jul 20	Jun 20	Jul 19	Jun 2020	Jul 2019		
<i>Furnishing and household equi</i>	4.0937	130.01	129.35	122.28	+	0.51	+	6.32
60 Furniture and furnishing	0.4750	130.99	130.08	119.52	+	0.70	+	9.60
61 Carpets	0.0308	112.03	111.18	106.49	+	0.76	+	5.20
62 Household textiles	0.3420	126.11	125.85	121.89	+	0.21	+	3.46
63 Household equipments	1.0032	129.93	129.09	121.02	+	0.65	+	7.36
64 Plastic products	0.0536	117.68	116.93	114.06	+	0.64	+	3.17
65 Major tools & equipments	0.0084	125.72	121.25	117.75	+	3.69	+	6.77
66 Washing soap/detergents/match	1.4112	130.10	130.05	121.58	+	0.04	+	7.01
67 Household servant	0.7695	132.71	131.21	128.31	+	1.14	+	3.43
<i>Health</i>	2.3098	141.55	140.28	133.63	+	0.91	+	5.93
68 Drugs and medicines	1.0735	141.05	139.60	131.83	+	1.04	+	6.99
69 Therapeutic Appliances and Eq	0.0054	112.42	111.06	106.46	+	1.22	+	5.60
70 Doctor (MBBS) clinic fee	0.4044	172.10	169.79	157.13	+	1.36	+	9.53
71 Dental services	0.0156	118.91	118.61	114.79	+	0.25	+	3.59
72 Medical tests	0.2367	126.68	126.01	120.65	+	0.53	+	5.00
73 Hospitals services	0.5742	127.99	127.51	126.57	+	0.38	+	1.12
<i>Transport</i>	6.1368	134.88	123.36	141.72	+	9.34	-	4.83
74 Motor vehicles	0.8097	147.76	147.46	141.89	+	0.20	+	4.14
75 Motor vehicle accessories	0.1941	131.04	130.68	121.74	+	0.28	+	7.64
76 Motor fuel	2.9088	141.21	111.18	156.53	+	27.01	-	9.79
77 Mechanical services	0.4290	131.11	130.87	120.34	+	0.18	+	8.95
78 Motor vehicle tax	0.0482	126.72	126.72	126.72	+	0.00	+	0.00
79 Transport services	1.7470	119.93	129.73	124.88	-	7.55	-	3.96
<i>Communication</i>	2.3536	108.22	108.22	107.80	+	0.00	+	0.39
80 Postal services	0.0190	147.05	147.05	147.05	+	0.00	+	0.00
81 Communication apparatus	0.4524	118.75	118.74	116.55	+	0.01	+	1.89
82 Communication Services	1.8822	105.30	105.30	105.30	+	0.00	+	0.00
<i>Recreation and culture</i>	1.7301	118.86	118.29	115.31	+	0.48	+	3.08
83 Recreation and culture	0.6478	110.71	110.70	106.83	+	0.01	+	3.63
84 Text books	0.6655	118.66	117.25	115.92	+	1.20	+	2.36
85 Newspapers	0.0716	151.55	151.55	151.55	+	0.00	+	0.00
86 stationery	0.3452	127.78	127.66	122.54	+	0.09	+	4.28
<i>Education</i>	4.8807	144.98	144.98	143.47	+	0.00	+	1.05
87 Education	4.8807	144.98	144.98	143.47	+	0.00	+	1.05
<i>Restaurants and hotels</i>	7.4050	130.92	130.52	122.67	+	0.31	+	6.73
88 Readymade food	5.5235	130.57	130.02	122.04	+	0.42	+	6.99
89 Marriage Hall Charges	1.7514	133.41	133.41	125.45	+	0.00	+	6.35
90 Accommodation Services	0.1301	112.40	112.40	112.01	+	0.00	+	0.35
<i>Misc. goods and services</i>	4.7720	140.40	138.14	127.23	+	1.64	+	10.35
91 Personal Grooming Services	0.8001	128.38	127.59	121.77	+	0.62	+	5.43
92 Electrical Appliances for Per	0.0465	116.91	116.88	114.97	+	0.03	+	1.69
93 Appliances/Articles/Products	2.9807	128.69	128.06	120.23	+	0.49	+	7.04
94 Personal Effects n.e.c.	0.9447	188.67	179.94	154.58	+	4.85	+	22.05

Annexure B:CPI (Rural) Index Numbers by Commodity Groups & Commodities (2015-16=100)

Item and Specification	Weight	Index Numbers			% Change in Jul 2020 over			
		Jul 20	Jun 20	Jul 19	Jun 2020	Jul 2019		
General	100.0000	136.36	132.36	122.22	+	3.02	+	11.57
Food and non-alcoholic Beverage	40.8668	141.49	135.66	119.15	+	4.30	+	18.75
01 Wheat	3.4736	140.61	126.86	107.83	+	10.84	+	30.40
02 Wheat Flour	3.4297	132.64	130.39	109.05	+	1.73	+	21.63
03 Wheat Products	0.1068	128.56	126.01	113.40	+	2.02	+	13.37
04 Besan	0.0728	121.65	127.27	110.62	-	4.42	+	9.97
05 Rice	1.5501	173.97	168.97	151.90	+	2.96	+	14.53
06 Bakery and Confectionary	0.3702	129.46	127.25	116.04	+	1.74	+	11.56
07 Nimco	0.0774	118.41	118.30	111.84	+	0.09	+	5.87
08 Meat	1.7146	150.26	147.57	136.80	+	1.82	+	9.84
09 Chicken	1.4641	149.26	145.51	110.00	+	2.58	+	35.69
10 Fish	0.2640	120.92	121.39	126.24	-	0.39	-	4.21
11 Milk fresh	10.3803	126.15	124.62	117.08	+	1.23	+	7.75
12 Milk products	0.9624	125.09	124.21	119.68	+	0.71	+	4.52
13 Milk powder	0.1062	124.44	124.19	113.17	+	0.20	+	9.96
14 Eggs	0.5665	141.54	124.33	100.31	+	13.84	+	41.10
15 Butter	0.3333	132.82	130.25	120.42	+	1.97	+	10.30
16 Mustard oil	0.0136	129.65	129.43	115.78	+	0.17	+	11.98
17 Cooking oil	0.6011	151.09	150.70	128.46	+	0.26	+	17.62
18 Vegetable ghee	2.3764	158.85	158.32	129.08	+	0.33	+	23.06
19 Dry fruits	0.2496	141.30	140.73	125.25	+	0.41	+	12.81
20 Fresh fruits	1.4505	155.47	166.49	149.34	-	6.62	+	4.10
21 Pulse Masoor	0.2076	111.09	115.79	84.95	-	4.06	+	30.77
22 Pulse Moong	0.2510	164.98	190.55	108.73	-	13.42	+	51.73
23 Pulse Mash	0.1465	104.43	108.83	76.19	-	4.04	+	37.07
24 Pulse Gram	0.2751	116.84	122.97	105.20	-	4.98	+	11.06
25 Gram Whole	0.1116	117.85	122.76	115.67	-	4.00	+	1.88
26 Beans	0.0896	165.51	163.12	122.99	+	1.47	+	34.57
27 Potatoes	0.7437	267.56	254.02	142.22	+	5.33	+	88.13
28 Onions	0.8965	91.92	73.20	116.20	+	25.57	-	20.90
29 Tomatoes	0.5069	201.46	59.01	87.86	+	241.4	+	129.3
						0		0
30 Fresh Vegetables	2.0947	128.13	105.34	110.78	+	21.63	+	15.66
31 Sugar	2.0296	135.90	131.09	116.60	+	3.67	+	16.55
32 Gur	0.1522	138.83	140.39	123.25	-	1.11	+	12.64
33 Honey	0.0296	125.29	122.76	118.92	+	2.06	+	5.36
34 Sweetmeat	0.3967	128.03	127.49	119.94	+	0.42	+	6.75
35 Ice Cream	0.0568	128.81	126.78	117.99	+	1.60	+	9.17
36 Condiments and Spices	1.4919	192.34	189.54	120.52	+	1.48	+	59.59
37 Dessert Preparation	0.0133	121.14	120.27	109.88	+	0.72	+	10.25
38 Tea	1.2566	137.87	137.87	125.80	+	0.00	+	9.59
39 Beverages	0.5537	127.49	126.88	114.54	+	0.48	+	11.31
Alcoholic Beverages, Tobacco	1.2786	132.15	130.65	125.43	+	1.15	+	5.36
40 Cigarettes	1.2364	131.02	129.74	124.78	+	0.99	+	5.00
41 Pan Prepared	0.0422	165.42	157.44	144.56	+	5.07	+	14.43
Clothing and footwear	9.4826	141.36	139.64	126.75	+	1.23	+	11.53
42 Cotton Cloth	2.8381	157.31	153.55	134.06	+	2.45	+	17.34
43 Woolen Cloth	1.0959	129.07	127.26	119.21	+	1.42	+	8.27
44 Readymade Garments	1.1345	134.45	133.73	125.04	+	0.54	+	7.53
45 Woolen Readymade Garments	0.5401	130.27	130.27	119.13	+	0.00	+	9.35
46 Tailoring	1.2999	137.63	137.50	129.89	+	0.09	+	5.96
47 Hosiry	0.4322	161.19	158.14	137.26	+	1.93	+	17.43
48 Dopatta	0.2078	133.09	132.13	120.21	+	0.73	+	10.71
49 Cleaning and Laundering	0.0176	135.51	131.39	117.70	+	3.14	+	15.13
50 Footware	1.9165	130.98	130.44	119.70	+	0.41	+	9.42
Housing, water, Elec., Gas an	18.4853	126.58	124.75	119.99	+	1.47	+	5.49
51 House Rent	8.6110	132.21	130.00	125.99	+	1.70	+	4.94
52 Construction Input Items	0.6306	120.84	119.11	116.66	+	1.45	+	3.58
53 Construction Wage Rates	0.2526	150.88	150.13	138.07	+	0.50	+	9.28
54 Water Supply	0.0645	211.83	158.09	142.97	+	33.99	+	48.16
55 Garbage Collection	0.0080	142.31	138.15	132.05	+	3.01	+	7.77
56 Electricity Charges	3.4431	108.04	108.04	108.25	+	0.00	-	0.19
57 Liquified Hydrocarbons	0.9994	118.54	108.50	123.64	+	9.25	-	4.12
58 Solid Fuel	4.4761	130.01	130.01	115.73	+	0.00	+	12.34
Furnishing and household equi	4.1031	131.08	129.30	119.09	+	1.38	+	10.07

Annexure B:CPI (Rural) Index Numbers by Commodity Groups & Commodities (2015-16=100)

Item and Specification	Weight	Index Numbers			% Change in Jul 2020 over	
		Jul 20	Jun 20	Jul 19	Jun 2020	Jul 2019
59 Furniture and Furnishing	0.5786	134.36	132.34	119.03	+ 1.53	+ 12.88
60 Household Textiles	0.4382	128.09	127.72	117.33	+ 0.29	+ 9.17
61 Household Equipments	1.2774	137.58	134.26	126.16	+ 2.47	+ 9.05
62 Plastic Products	0.0776	143.67	138.83	128.70	+ 3.49	+ 11.63
63 Major Tools and Equipments	0.0324	118.45	116.01	111.79	+ 2.10	+ 5.96
64 Washing Soaps, Detergents and	1.6989	125.52	124.76	113.95	+ 0.61	+ 10.15
Health	3.5141	142.62	141.06	129.98	+ 1.11	+ 9.72
65 Drugs and Medicines	1.5792	143.05	142.48	131.57	+ 0.40	+ 8.73
66 Doctor Clinic Fee	0.5128	168.64	161.36	138.63	+ 4.51	+ 21.65
67 Dental Services	0.0181	122.97	122.97	112.95	+ 0.00	+ 8.87
68 Medical Tests	0.3967	145.37	143.22	132.54	+ 1.50	+ 9.68
69 Hospitals Services	1.0073	127.98	127.98	122.38	+ 0.00	+ 4.58
Transport	5.5580	134.53	122.26	139.88	+ 10.04	- 3.82
70 Motor Vehicles	0.7305	128.17	127.15	125.48	+ 0.80	+ 2.14
71 Motor Vehicles Accessories	0.1572	135.85	135.58	126.45	+ 0.20	+ 7.43
72 Motor Fuels	2.4932	139.94	107.97	155.45	+ 29.61	- 9.98
73 Mechanical Services	0.3645	153.45	153.45	146.72	+ 0.00	+ 4.59
74 Motor Vehicle Tax	0.0174	127.98	127.98	127.98	+ 0.00	+ 0.00
75 Transport Services	1.7952	125.71	132.56	124.02	- 5.17	+ 1.36
Communication	1.9940	104.72	104.72	104.43	+ 0.00	+ 0.28
76 Postal Services	0.0070	149.43	149.43	149.43	+ 0.00	+ 0.00
77 Communication Apparatus	0.3362	118.95	118.95	117.22	+ 0.00	+ 1.48
78 Communication Services	1.6508	101.63	101.63	101.63	+ 0.00	+ 0.00
Recreation and culture	1.3764	125.09	123.14	118.92	+ 1.58	+ 5.19
79 Recreation and Culture	0.4763	129.12	128.43	120.62	+ 0.54	+ 7.05
80 Text Books	0.5047	113.59	110.23	109.50	+ 3.05	+ 3.74
81 Newspapers	0.0230	161.68	161.68	161.68	+ 0.00	+ 0.00
82 Stationery	0.3724	133.27	131.49	126.88	+ 1.35	+ 5.04
Education	2.1342	133.48	133.48	131.93	+ 0.00	+ 1.17
83 Education	2.1342	133.48	133.48	131.93	+ 0.00	+ 1.17
Restaurants and hotels	6.1895	135.62	134.15	124.47	+ 1.10	+ 8.96
84 Readymade Food	3.8001	142.00	139.60	126.76	+ 1.72	+ 12.02
85 Marriage Hall Charges	2.2525	126.93	126.93	122.00	+ 0.00	+ 4.04
86 Accommodation Services	0.1369	101.59	101.59	101.59	+ 0.00	+ 0.00
Misc. goods and services	5.0174	141.98	138.54	124.79	+ 2.48	+ 13.78
87 Personal Grooming Services	1.5363	139.16	138.27	125.40	+ 0.64	+ 10.97
88 Appliances/Articles/Products	2.2746	123.05	121.52	113.69	+ 1.26	+ 8.23
89 Personal Effects n.e.c.	1.2065	181.27	170.98	144.94	+ 6.02	+ 25.07

Annexure C: Wholesale Price Indices by Major Groups & Commodities

(2015-16=100)

Item and Specification	Weight	Index Numbers			% Change in Jul 2020 over			
		Jul 20	Jun 20	Jul 19	Jun 2020	Jul 2019		
General	100.0000	143.14	135.80	138.66	+	5.41	+	3.23
Agriculture Forestry & Fisher	25.7674	142.06	137.92	128.38	+	3.00	+	10.66
001 Wheat	0.6297	140.80	129.96	105.81	+	8.34	+	33.07
002 Maize	0.6764	138.38	144.29	140.61	-	4.10	-	1.59
003 Rice	2.4413	152.81	152.64	141.24	+	0.11	+	8.19
004 Sorghum / Jowar	0.0214	210.78	198.03	167.78	+	6.44	+	25.63
005 Millet / Bajra	0.0374	126.54	121.58	146.33	+	4.08	-	13.52
006 Vegetables	1.2441	160.87	120.64	135.28	+	33.35	+	18.92
007 Fresh Fruits	1.5144	156.93	155.31	135.46	+	1.04	+	15.85
008 Dry Fruits	0.2478	130.38	130.41	123.36	-	0.02	+	5.69
009 Cotton Seeds	1.1511	134.86	134.28	119.21	+	0.43	+	13.13
010 Other Oil Seeds	0.0722	135.64	135.62	126.55	+	0.01	+	7.18
011 Edible Roots / Potatoes	0.2540	304.56	285.65	170.93	+	6.62	+	<u>78.18</u>
012 Stimulant & Spice Crops	0.1634	306.52	275.99	178.25	+	11.06	+	<u>71.96</u>
013 Pulses	0.4901	121.40	126.13	104.26	-	3.75	+	16.44
014 Sugar Crops	1.0725	122.32	122.32	112.02	+	0.00	+	9.19
015 Fibre Crops	5.3169	145.46	145.46	156.32	+	0.00	-	6.95
016 Unmanufactured Tobacco	0.0742	193.80	189.62	153.11	+	2.20	+	26.58
017 Poultry	0.5633	140.86	138.75	111.37	+	1.52	+	26.48
018 Raw Milk from Bovine Animals	7.0279	129.67	124.74	108.58	+	3.95	+	19.42
019 Eggs	0.5034	144.77	130.17	99.54	+	11.22	+	45.44
020 Raw Animal Materials / Wool	0.0351	105.39	105.33	105.82	+	0.06	-	0.41
021 Hides, Skins & Fur Skins, Raw	0.4834	38.60	38.90	43.93	-	0.77	-	12.13
022 Fuel Wood in Logs	0.0179	115.96	115.92	102.91	+	0.03	+	12.68
023 Fish Live Fresh or Chilled	1.7295	154.34	155.00	146.34	-	0.43	+	5.47
Ores/Minerals, Elec., Gas & W	12.0069	161.11	160.96	159.32	+	0.09	+	1.12
024 Coal not Agglomerated	0.7508	75.79	75.79	82.17	+	0.00	-	7.76
025 Natural Gas Liquified	5.7065	195.70	195.39	195.82	+	0.16	-	0.06
026 Salt & Pure Sodium Chloride	0.0584	161.88	161.99	143.70	-	0.07	+	12.65
027 Electrical Energy	5.4912	136.82	136.82	132.10	+	0.00	+	3.57
Food, Beverages, Tobacco, Textil	31.1122	139.64	136.94	126.72	+	1.97	+	10.20
Food Products, Beverages &	20.0718	137.23	134.55	120.09	+	1.99	+	14.27
028 Meat of Animals	3.4559	153.94	149.89	130.66	+	2.70	+	17.82
029 Vegetables & Fruit Juice	0.0058	111.15	111.80	111.64	-	0.58	-	0.44
030 Dried Fruits & Nuts	0.1733	159.63	159.45	149.04	+	0.11	+	7.11
031 Fruit Juices	0.3880	125.44	123.07	115.44	+	1.93	+	8.66
032 Vegetable Oils Refined	1.9242	124.03	123.92	115.37	+	0.09	+	7.51
033 Vegetable Ghee	1.5632	143.90	146.37	127.13	-	1.69	+	13.19
034 Oil Cakes	0.9611	150.90	140.91	128.33	+	7.09	+	17.59
035 Processed Liquid Milk	4.4437	134.84	134.52	120.92	+	0.24	+	11.51
036 Milk & Cream in Solid Form	0.0316	128.79	128.30	120.72	+	0.38	+	6.68
037 Ice Cream	0.0047	126.15	117.05	107.34	+	7.77	+	17.52
038 Dairy Products N.E.C	0.0117	133.96	133.91	125.54	+	0.04	+	6.71
039 Wheat Flour	2.3034	136.02	130.82	107.72	+	3.97	+	26.27
040 Other Cereal Flour	0.0604	116.92	120.30	107.79	-	2.81	+	8.47
041 Sugar Refined	1.7975	137.18	130.15	116.16	+	5.40	+	18.10
042 Chocolate	0.0139	81.72	81.57	81.57	+	0.18	+	0.18
043 Sugar Confectionary	0.0738	161.56	115.50	123.81	+	39.88	+	30.49
044 Coffee & Tea	0.7303	129.26	127.76	120.65	+	1.17	+	7.14
045 Spices	0.1449	240.00	230.86	139.65	+	3.96	+	<u>71.86</u>
046 Other Food Products	0.0336	117.25	112.54	109.25	+	4.19	+	7.32
047 Mineral Water	0.0207	125.19	122.92	117.89	+	1.85	+	6.19
048 Beverages	0.6303	127.42	125.81	121.66	+	1.28	+	4.73
049 Tobacco Products	1.2998	104.23	104.23	104.23	+	0.00	+	0.00
Textiles & Apparels	10.3289	145.76	142.82	140.76	+	2.06	+	3.55
050 Cotton Yarn	5.2491	164.84	164.84	167.51	+	0.00	-	1.59
051 Nylon Yarn	0.1719	95.24	95.24	95.24	+	0.00	+	0.00
052 Blended Yarn	0.1689	120.22	120.22	122.07	+	0.00	-	1.52
053 Woven Fabrics	0.0128	135.54	135.54	123.42	+	0.00	+	9.82
054 Cotton Fabrics	0.6343	149.50	118.55	108.05	+	26.11	+	38.36
055 Other Fabrics	1.1016	113.59	113.21	110.87	+	0.34	+	2.45
056 Silk & Reyon Fabrics	0.7350	130.26	119.19	113.69	+	9.29	+	14.57
057 Towels	0.1235	123.48	117.41	108.38	+	5.17	+	13.93
058 Blankets	0.0029	102.50	96.44	95.81	+	6.28	+	6.98
059 Bed Sheets	0.0913	119.45	112.64	106.74	+	6.05	+	11.91

Annexure C: Wholesale Price Indices by Major Groups & Commodities

(2015-16=100)

Item and Specification	Weight	Index Numbers			% Change in Jul 2020 over	
		Jul 20	Jun 20	Jul 19	Jun 2020	Jul 2019
060 Quilts	0.0019	109.35	109.35	104.68	+ 0.00	+ 4.46
061 Woolen Carpets	0.0383	137.01	137.01	125.43	+ 0.00	+ 9.23
062 Synthetic Carpets	0.0566	115.72	115.72	105.96	+ 0.00	+ 9.21
063 Hosiery Products	0.8832	122.67	122.11	110.29	+ 0.46	+ 11.22
064 Readymade Garments	1.0576	131.74	131.52	122.90	+ 0.17	+ 7.19
Leather Products	0.7115	118.88	118.88	110.18	+ 0.00	+ 7.90
065 Leather Without Hair	0.2973	108.00	108.00	105.65	+ 0.00	+ 2.22
066 Other Leather N.E.C	0.2567	111.77	111.77	106.90	+ 0.00	+ 4.56
067 Footwears	0.1575	151.00	151.00	124.07	+ 0.00	+ 21.71
Other Transportable Goods	22.3979	138.95	118.26	160.42	+ 17.50	- 13.38
068 Timber	0.0165	140.66	111.96	111.75	+ 25.63	+ 25.87
069 Printing Paper	0.4279	130.70	130.70	119.93	+ 0.00	+ 8.98
070 Hard Board	0.1579	146.50	146.50	146.50	+ 0.00	+ 0.00
071 Motor Spirit	1.6268	140.68	103.34	159.36	+ 36.13	- 11.72
072 Diesel Oil	5.4849	123.59	90.13	175.76	+ 37.12	- 29.68
073 Kerosine Oil	0.2151	116.34	69.74	193.10	+ <u>66.82</u>	- 39.75
074 Furnace Oil	3.2664	216.73	161.29	278.22	+ 34.37	- 22.10
075 Mobil Oil	0.7114	122.25	122.25	118.99	+ 0.00	+ 2.74
076 Chemicals	1.7720	132.94	129.81	127.96	+ 2.41	+ 3.89
077 Dyeing Material	0.1539	146.16	146.16	108.55	+ 0.00	+ 34.65
078 Fertilizers	2.8657	93.79	94.21	102.11	- 0.45	- 8.15
079 Pesticides	0.2763	141.18	110.91	107.60	+ 27.29	+ 31.21
080 Insecticides	0.1276	111.49	111.49	112.92	+ 0.00	- 1.27
081 Paints & Varnishes	0.1916	133.27	124.38	123.82	+ 7.15	+ 7.63
082 Medicines	1.1428	145.00	145.57	129.10	- 0.39	+ 12.32
083 Soaps & Detergents	0.8168	113.51	111.69	108.92	+ 1.63	+ 4.21
084 Auto Tyres	0.2703	124.45	121.56	121.23	+ 2.38	+ 2.66
085 Plastic Products	0.4550	116.63	115.52	108.04	+ 0.96	+ 7.95
086 Glass sheets	0.2089	150.14	149.29	142.25	+ 0.57	+ 5.55
087 Other Glass Articles	0.1635	144.31	132.52	131.03	+ 8.90	+ 10.14
088 Ceramics & Sanitary Fixture	0.0244	123.90	123.86	123.16	+ 0.03	+ 0.60
089 Bricks, Blocks & Tiles	0.1566	126.40	118.77	117.73	+ 6.42	+ 7.36
090 Cement	1.8145	119.23	114.99	113.81	+ 3.69	+ 4.76
091 Bed Foam	0.0006	146.33	145.73	118.27	+ 0.41	+ 23.73
092 Matches	0.0505	1171.7	1171.7	1130.3	+ 0.00	+ 3.66
		5	5	8		
Metal Product, Machinery & Eq	8.7156	144.85	135.83	127.30	+ 6.64	+ 13.79
093 Steel Bar & Sheets	1.4615	162.92	163.73	157.42	- 0.49	+ 3.49
094 Pipe Fittings	0.0780	144.78	141.32	132.50	+ 2.45	+ 9.27
095 Steel Products	0.3879	133.78	133.35	132.93	+ 0.32	+ 0.64
096 Engines & Motors	0.0046	107.29	107.29	107.29	+ 0.00	+ 0.00
097 Vacuum Pumps	0.0155	107.56	107.56	107.56	+ 0.00	+ 0.00
098 Air Conditioners	0.0049	115.95	112.46	112.46	+ 3.10	+ 3.10
099 Cultivators	0.0551	103.75	103.75	103.75	+ 0.00	+ 0.00
100 Chuff Cutter	0.1293	110.00	110.00	102.86	+ 0.00	+ 6.94
101 Tractors	0.0028	122.16	121.30	109.22	+ 0.71	+ 11.85
102 Lathe Machines	0.0525	203.64	203.64	168.06	+ 0.00	+ 21.17
103 Concrete Mixture	0.0107	100.00	100.00	100.00	+ 0.00	+ 0.00
104 Fridge, WashM, SewM, Fans, Iron	1.1645	153.20	148.98	137.35	+ 2.83	+ 11.54
105 Electric Wires	0.0912	137.76	125.73	122.14	+ 9.57	+ 12.79
106 Lighting Equipments	1.4431	116.71	116.71	110.13	+ 0.00	+ 5.97
107 Radio & Television	0.1843	104.51	100.59	96.80	+ 3.90	+ 7.96
108 Motor Vehicles	0.0244	156.45	156.45	150.63	+ 0.00	+ 3.86
109 Motorcycles	0.2570	122.49	122.49	118.06	+ 0.00	+ 3.75
110 Bicycles	3.3483	153.05	131.36	120.58	+ 16.51	+ 26.93